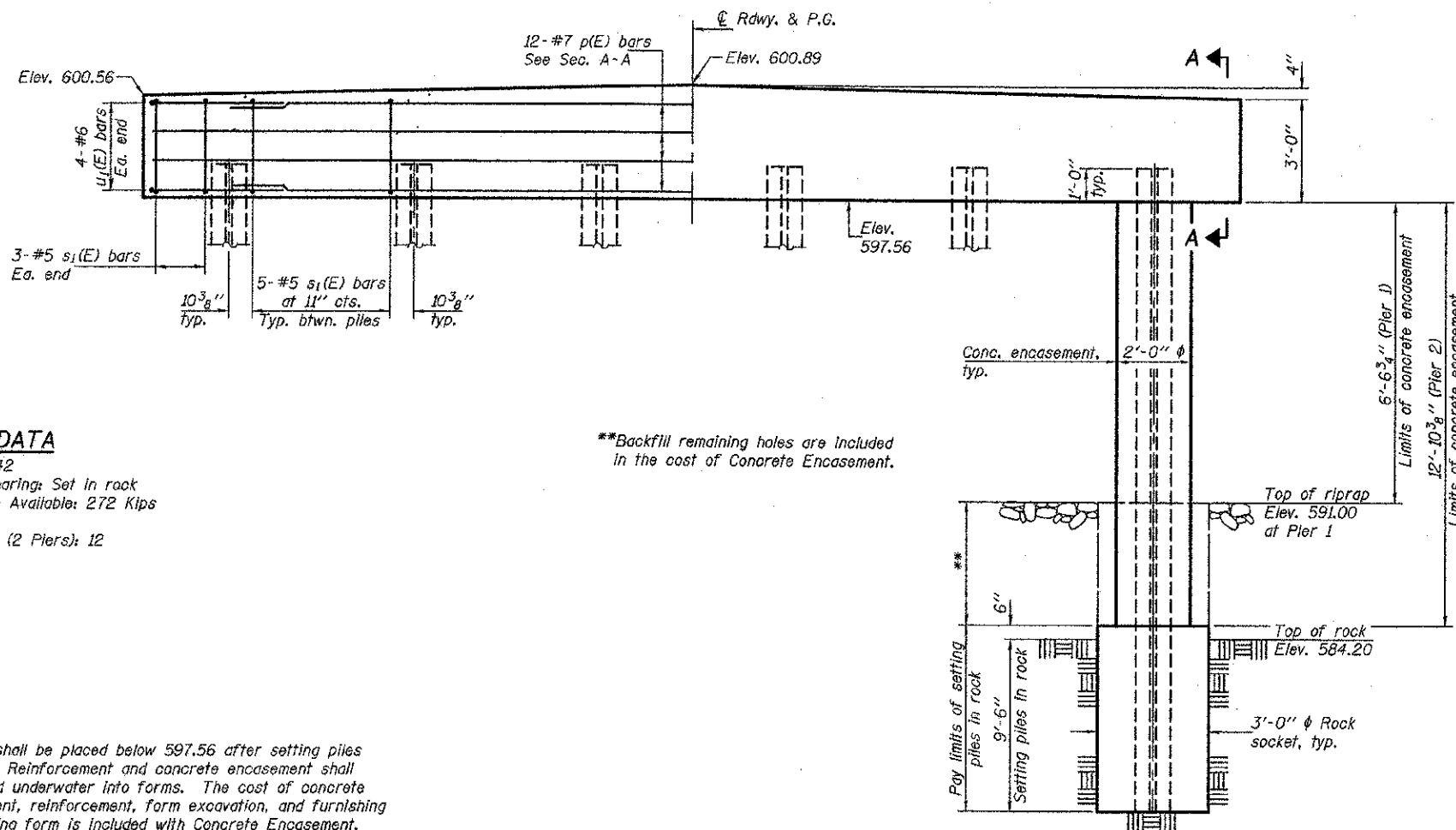
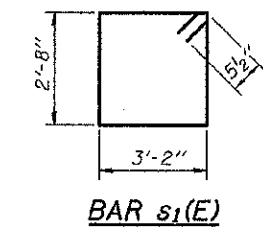


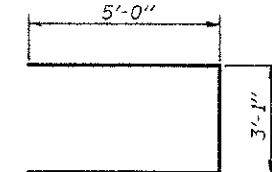
SECTION A-A



ELEVATION
(Looking east)



BAR s1(E)



BAR u2(E)

TWO PIERS
BILL OF MATERIAL

Bar	No.	Size	Length	Shape
p(E)	24	#7	31'-8"	
s1(E)	62	#5	12'-7"	□
u2(E)	16	#6	13'-1"	□
Concrete Structures			Cu. Yd.	26.3
Reinforcement Bars, Epoxy Coated			Pound	2680
Furnishing Steel Piles, HP10x42			Foot	300
Concrete Encasement			Cu. Yd.	18
Setting Piles in Rock			Each	12

For details of piles and conc. encasement, see sheet 9 of 12.

PILE DATA
 Type: Steel HP10x42
 Nominal Required Bearing: Set in rock
 Factored Resistance Available: 272 Kips
 Est. Length: 25'
 No. Production Piles (2 Piers): 12
 No. Test Piles: 0

Notes: Form shall be placed below 597.56 after setting piles in rock. Reinforcement and concrete encasement shall be placed underwater into forms. The cost of concrete encasement, reinforcement, form excavation, and furnishing and placing form is included with Concrete Encasement. If a portion of the concrete encasement is under water, concrete shall be tremied under water into forms according to Article 503.08 of the Standard Specifications. Concrete shall be trimmed to an elevation 1'-0" above the water level at the time of construction. Pile cap concrete shall not be trimmed.

DESIGNED - Euse Teklehaimanot
 CHECKED - Stephen M. Ryan
 DRAWN - L.I. duong
 CHECKED - FT/SMR

EXAMINED
 PASSED
 ENGINEER OF BRIDGE DESIGN
 ENGINEER OF BRIDGES AND STRUCTURES

DATE - 4/19/2012
 REVISED
 REVISED

STATE OF ILLINOIS
 DEPARTMENT OF TRANSPORTATION

PIERS
 STRUCTURE NO. 087-3555

SHEET NO. 8 OF 12 SHEETS

F.A.S. RTE.	SECTION	COUNTY	TOTAL SHEETS	SHEET NO.
656	06-00265-00-BR	SHELBY	29	25
CONTRACT NO. 95201			ILLINOIS FED. AID PROJECT	