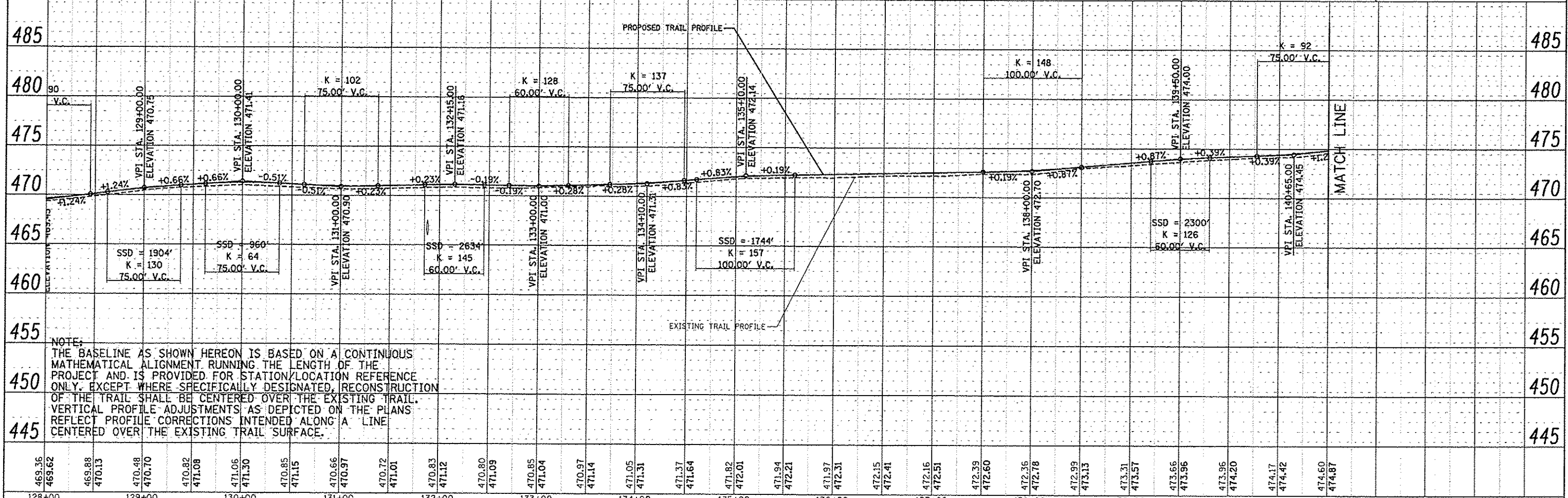
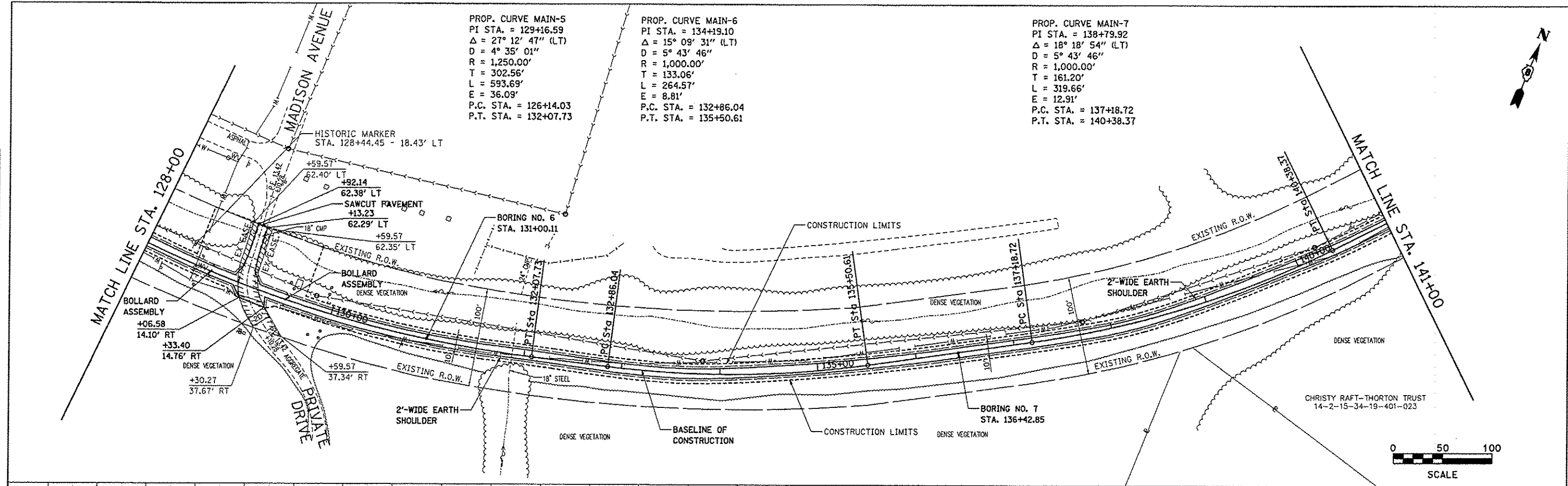


PLAN	DATE
BY	
NO.	
NO.	
NO.	
NO.	

PROFILE	DATE
BY	
NO.	
NO.	
NO.	
NO.	



NOTE:
 THE BASELINE AS SHOWN HEREON IS BASED ON A CONTINUOUS MATHEMATICAL ALIGNMENT RUNNING THE LENGTH OF THE PROJECT AND IS PROVIDED FOR STATION/LOCATION REFERENCE ONLY. EXCEPT WHERE SPECIFICALLY DESIGNATED, RECONSTRUCTION OF THE TRAIL SHALL BE CENTERED OVER THE EXISTING TRAIL. VERTICAL PROFILE ADJUSTMENTS AS DEPICTED ON THE PLANS REFLECT PROFILE CORRECTIONS INTENDED ALONG A LINE CENTERED OVER THE EXISTING TRAIL SURFACE.

FILE NAME = p1m03.dgn	USER NAME = jeremy	DESIGNED = SAS	MADISON COUNTY TRANSIT DISTRICT HERITAGE BIKEWAY	PLAN AND PROFILE	F.A. RTE.	SECTION	COUNTY	TOTAL SHEETS	SHEET NO.
PLOT SCALE = #SCALE#	CHECKED = WJB	DATE = 11/30/12			06-0016-00-BT	MADISON	310	34	
PLOT DATE = 12/18/2012	DATE = 11/30/12	SCALE: 1" = 50'			SHEET NO. 3 OF 30 SHEETS	STA. 128+00.00 TO STA. 141+00.00	CONTRACT NO. 97433		
					FED. ROAD DIST. NO. ILLINOIS FED. AID PROJECT				