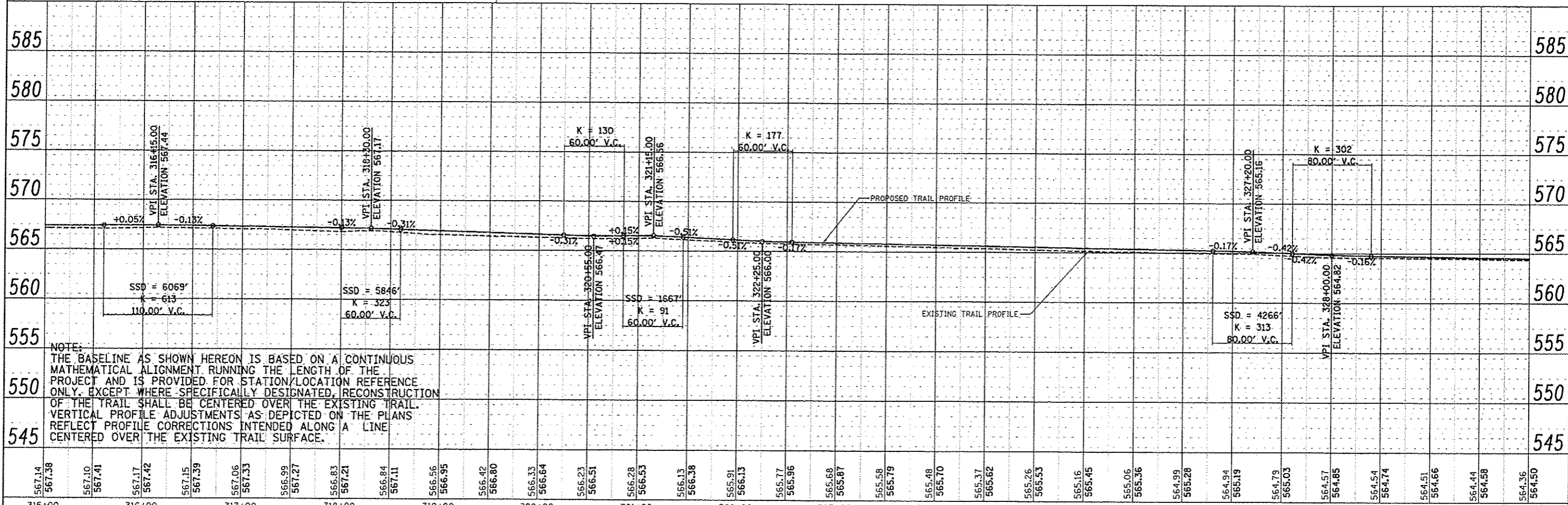
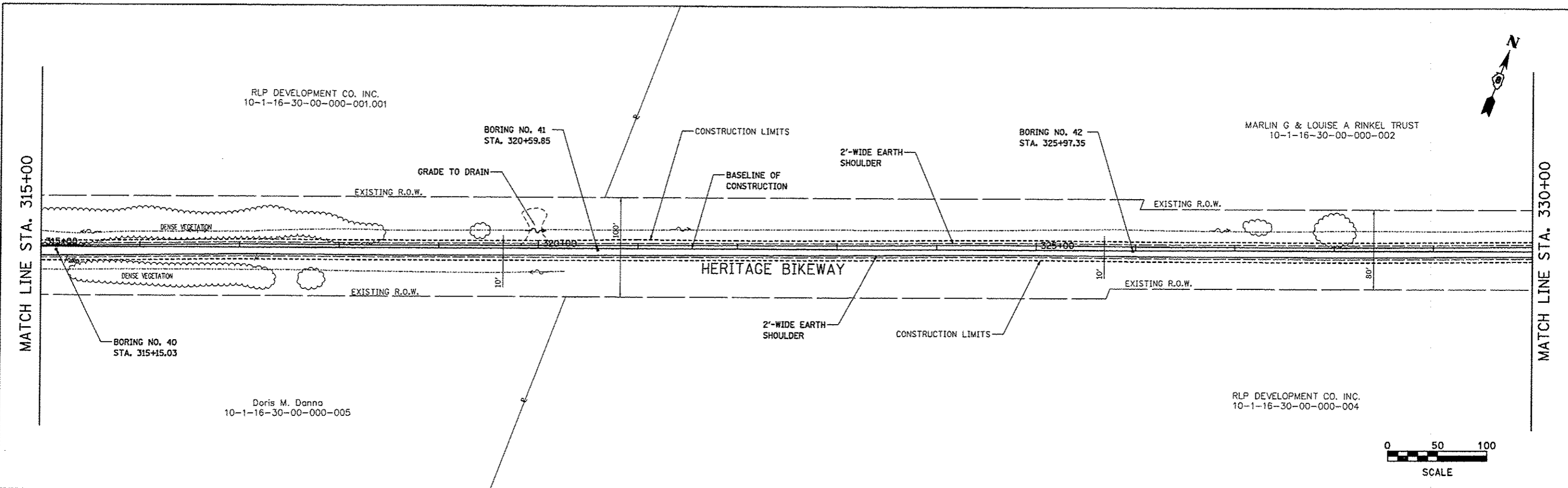


PLAN	DATE
BY	
REVISIONS	
NO.	
DESCRIPTION	
DATE	
BY	

PROFILE	DATE
BY	
REVISIONS	
NO.	
DESCRIPTION	
DATE	
BY	



NOTE:
 THE BASELINE AS SHOWN HEREON IS BASED ON A CONTINUOUS MATHEMATICAL ALIGNMENT RUNNING THE LENGTH OF THE PROJECT AND IS PROVIDED FOR STATION/LOCATION REFERENCE ONLY. EXCEPT WHERE SPECIFICALLY DESIGNATED, RECONSTRUCTION OF THE TRAIL SHALL BE CENTERED OVER THE EXISTING TRAIL. VERTICAL PROFILE ADJUSTMENTS AS DEPICTED ON THE PLANS REFLECT PROFILE CORRECTIONS INTENDED ALONG A LINE CENTERED OVER THE EXISTING TRAIL SURFACE.

FILE NAME: p16n06.dgn	USER NAME: jeremy	DESIGNED: SAS	F.A. RTE.	SECTION	COUNTY	TOTAL SHEETS	SHEET NO.
PLOT SCALE: #SCALE#	CHECKED: WJB	DRAWN: JDH	06-00016-00-BT	MADISON	310	47	
PLOT DATE: 12/19/2012	DATE: 11/30/12		MADISON COUNTY TRANSIT DISTRICT		CONTRACT NO. 97433		
			HERITAGE BIKEWAY		PLAN AND PROFILE		
			SCALE: 1" = 50'		SHEET NO. 16 OF 30 SHEETS		STA. 315+00.00 TO STA. 330+00.00
			FED. ROAD DIST. NO. ILLINOIS FED. AID PROJECT				