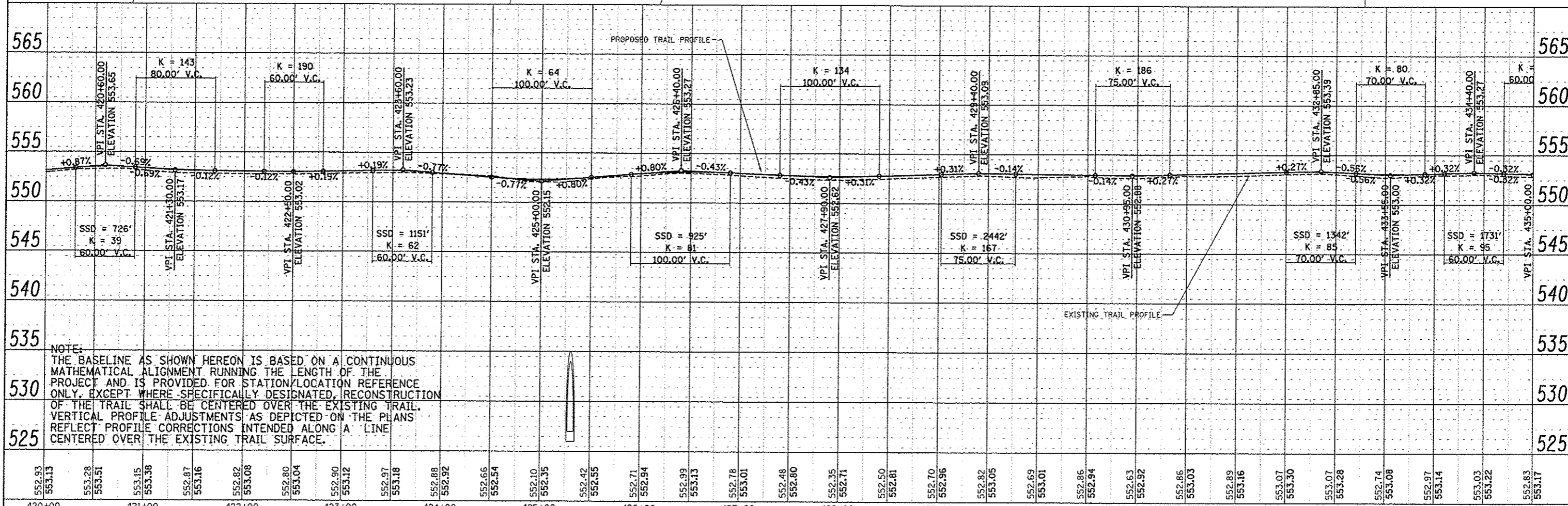
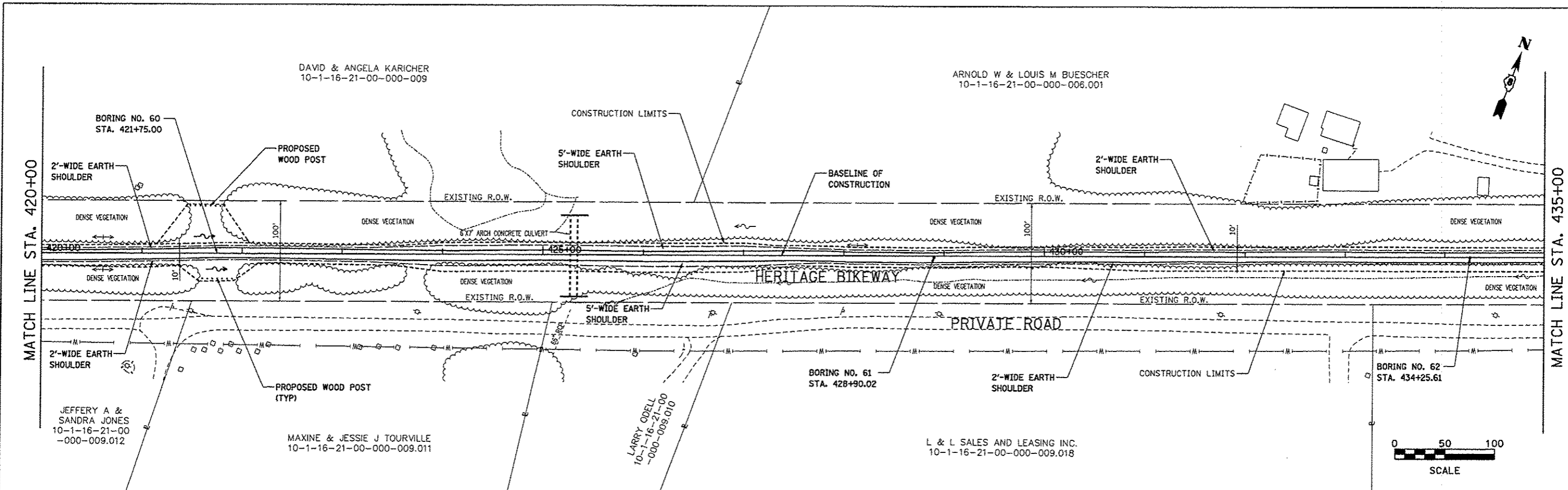


PLAN	DATE
BY	
NO.	
DATE	
BY	
NO.	
DATE	
BY	
NO.	
DATE	
BY	
NO.	
DATE	

PROFILE	DATE
BY	
NO.	
DATE	
BY	
NO.	
DATE	
BY	
NO.	
DATE	
BY	
NO.	
DATE	



NOTE:
 THE BASELINE AS SHOWN HEREON IS BASED ON A CONTINUOUS MATHEMATICAL ALIGNMENT RUNNING THE LENGTH OF THE PROJECT AND IS PROVIDED FOR STATION/LOCATION REFERENCE ONLY. EXCEPT WHERE SPECIFICALLY DESIGNATED, RECONSTRUCTION OF THE TRAIL SHALL BE CENTERED OVER THE EXISTING TRAIL. VERTICAL PROFILE ADJUSTMENTS AS DEPICTED ON THE PLANS REFLECT PROFILE CORRECTIONS INTENDED ALONG A LINE CENTERED OVER THE EXISTING TRAIL SURFACE.

FILE NAME = plan23.dgn	USER NAME = jeremy	DESIGNED = SAS	MADISON COUNTY TRANSIT DISTRICT HERITAGE BIKEWAY	PLAN AND PROFILE	F.A. RTE.	SECTION	COUNTY	TOTAL SHEETS	SHEET NO.
		DRAWN = JDH			06-00016-00-BT	MADISON	310	54	
		CHECKED = WJB			CONTRACT NO. 97433				
		DATE = 11/30/12			SCALE: 1" = 50'	SHEET NO. 23 OF 30 SHEETS	STA. 420+00.00 TO STA. 435+00.00	FED. ROAD DIST. NO.	ILLINOIS