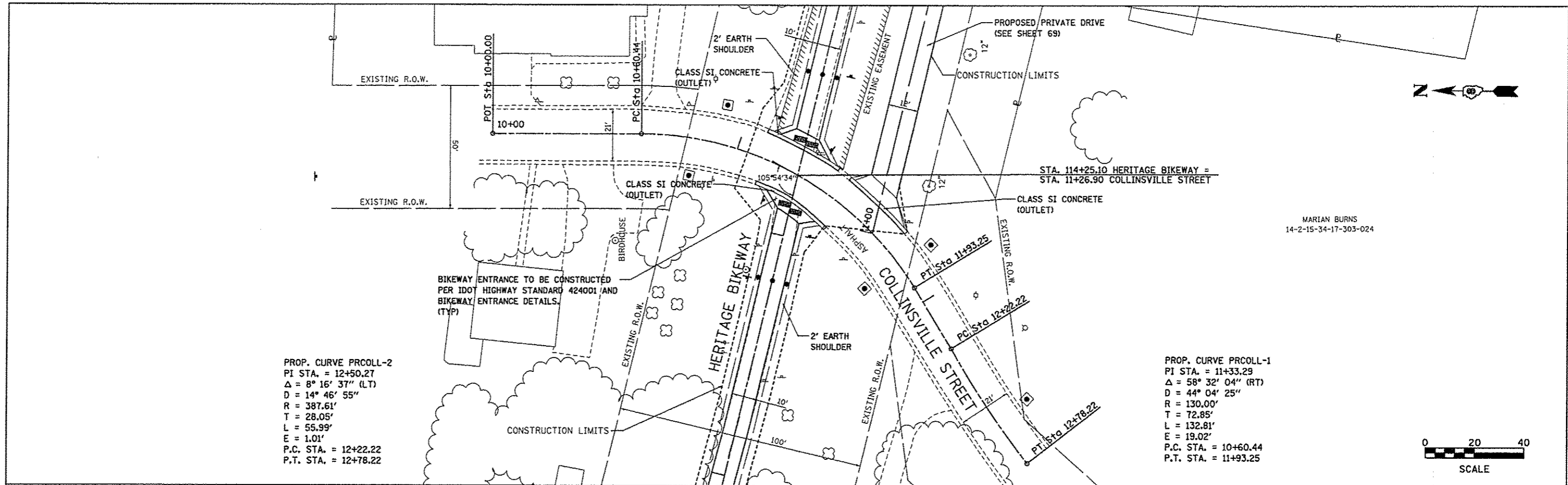


DATE	
BY	
REVISED	
PLANNED	
NOTED	
NO.	

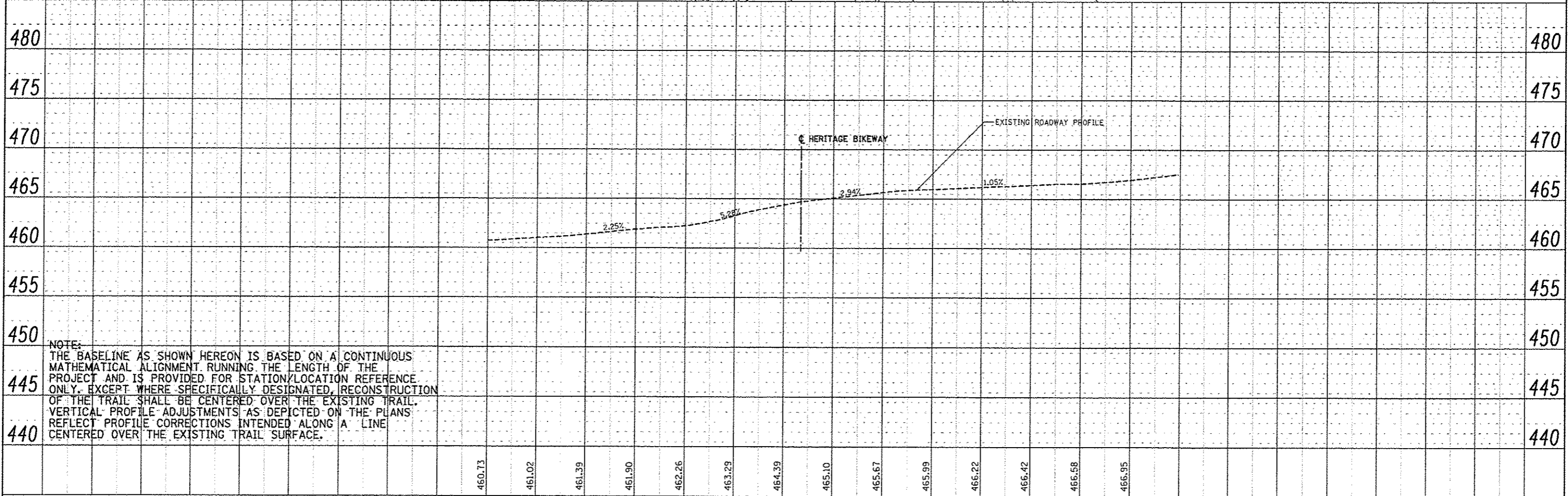
DATE	
BY	
REVISED	
PLANNED	
NOTED	
NO.	



PROP. CURVE PRCOLL-2
 PI STA. = 12+50.27
 $\Delta = 8^\circ 16' 37''$ (LT)
 D = 14° 46' 55"
 R = 387.61'
 T = 28.05'
 L = 55.99'
 E = 1.01'
 P.C. STA. = 12+22.22
 P.T. STA. = 12+78.22

PROP. CURVE PRCOLL-1
 PI STA. = 11+33.29
 $\Delta = 58^\circ 32' 04''$ (RT)
 D = 44° 04' 25"
 R = 130.00'
 T = 72.85'
 L = 132.81'
 E = 19.02'
 P.C. STA. = 10+60.44
 P.T. STA. = 11+93.25

MARIAN BURNS
 14-2-15-34-17-303-024



NOTE:
 THE BASELINE AS SHOWN HEREON IS BASED ON A CONTINUOUS MATHEMATICAL ALIGNMENT RUNNING THE LENGTH OF THE PROJECT AND IS PROVIDED FOR STATION/LOCATION REFERENCE ONLY. EXCEPT WHERE SPECIFICALLY DESIGNATED, RECONSTRUCTION OF THE TRAIL SHALL BE CENTERED OVER THE EXISTING TRAIL. VERTICAL PROFILE ADJUSTMENTS AS DEPICTED ON THE PLANS REFLECT PROFILE CORRECTIONS INTENDED ALONG A LINE CENTERED OVER THE EXISTING TRAIL SURFACE.

FILE NAME = Crossroad.pln.dgn	USER NAME = Jeremy	DESIGNED - SAS	REVISED -	MADISON COUNTY TRANSIT DISTRICT HERITAGE BIKEWAY	COLLINSVILLE STREET PLAN AND PROFILE		F.A. RTE.	SECTION	COUNTY	TOTAL SHEETS	SHEET NO.
		DRAWN - JDH	REVISED -		SCALE: 1"=20'	SHEET NO. 1 OF 8 SHEETS	STA. 10+00.00 TO STA. 12+78.22	06-00016-00-BT	MADISON	310	62
		CHECKED - WJB	REVISED -								CONTRACT NO. 97433
		DATE - 11/30/12	REVISED -								ILLINOIS FED. AID PROJECT