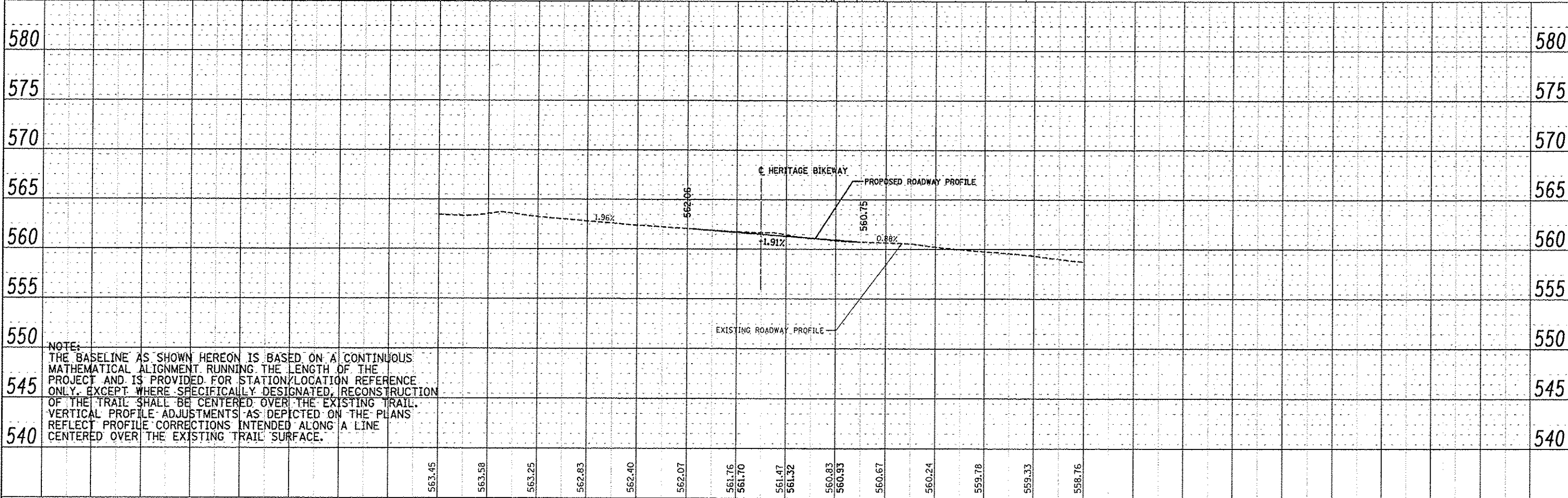
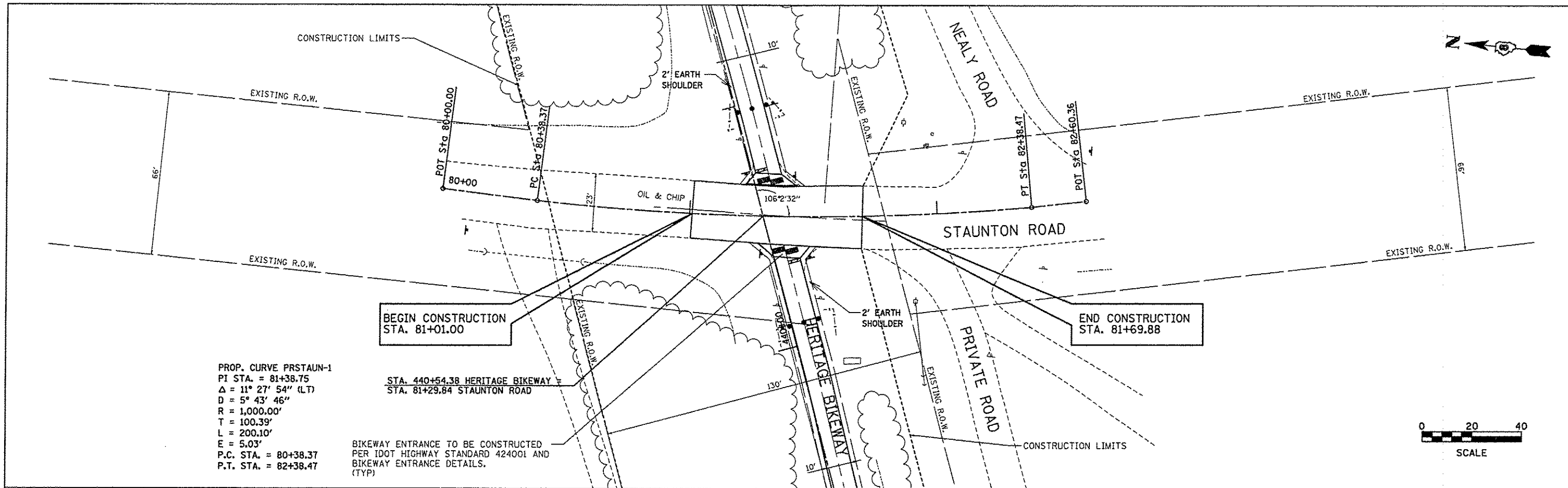


PLAN	DATE
BY	
CHECKED	
DESIGNED	
IN CHARGE	
NO. OF SHEETS	
NO. OF THIS SHEET	
DATE	

PROFILE	DATE
BY	
CHECKED	
DESIGNED	
IN CHARGE	
NO. OF SHEETS	
NO. OF THIS SHEET	
DATE	



NOTE:
 THE BASELINE AS SHOWN HEREON IS BASED ON A CONTINUOUS MATHEMATICAL ALIGNMENT RUNNING THE LENGTH OF THE PROJECT AND IS PROVIDED FOR STATION/LOCATION REFERENCE ONLY. EXCEPT WHERE SPECIFICALLY DESIGNATED, RECONSTRUCTION OF THE TRAIL SHALL BE CENTERED OVER THE EXISTING TRAIL. VERTICAL PROFILE ADJUSTMENTS AS DEPICTED ON THE PLANS REFLECT PROFILE CORRECTIONS INTENDED ALONG A LINE CENTERED OVER THE EXISTING TRAIL SURFACE.

FILE NAME * Crossroad.pln8.dgn	USER NAME * Jeremy	DESIGNED - SAS	REVISED -	MADISON COUNTY TRANSIT DISTRICT HERITAGE BIKEWAY	STAUNTON ROAD PLAN AND PROFILE		F.A. RTE.	SECTION	COUNTY	TOTAL SHEETS	SHEET NO.
		DRAWN - JQH	REVISED -		SCALE: 1"=20'	SHEET NO. 5 OF 8 SHEETS	STA. 80+00.00 TO STA. 82+60.36	06-00016-00-BT	MADISON	310	66
		CHECKED - WJB	REVISED -								CONTRACT NO. 97433
		PLOT DATE = 12/18/2012	DATE = 11/30/12								ILLINOIS FED. AID PROJECT