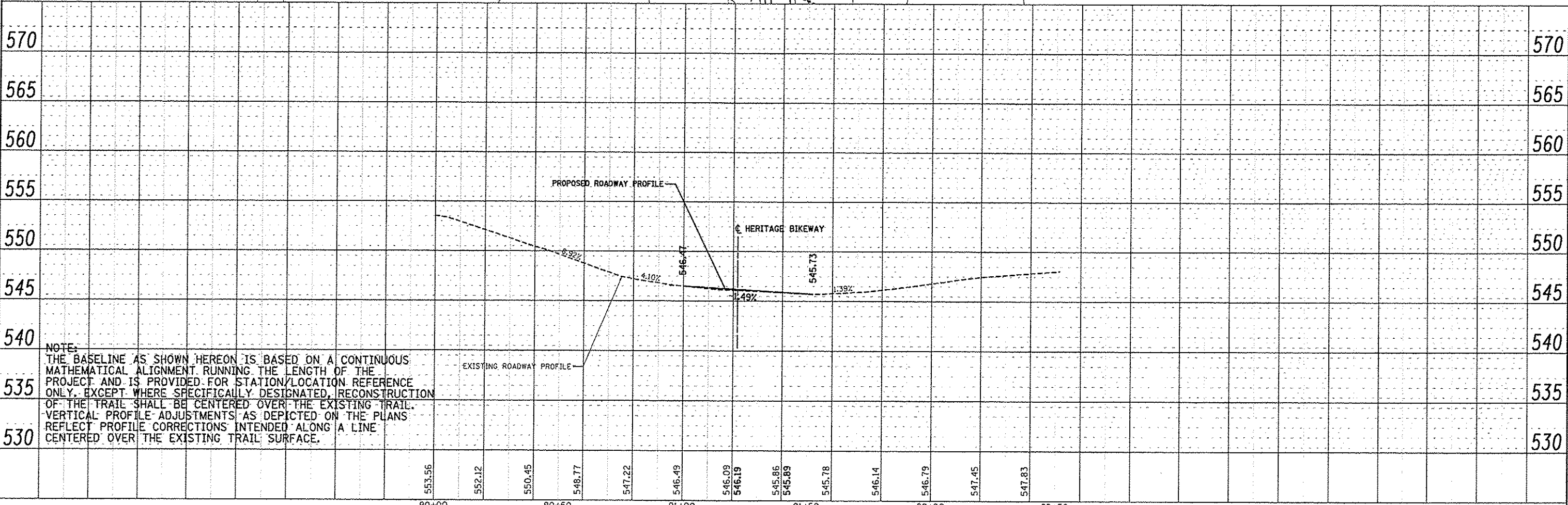
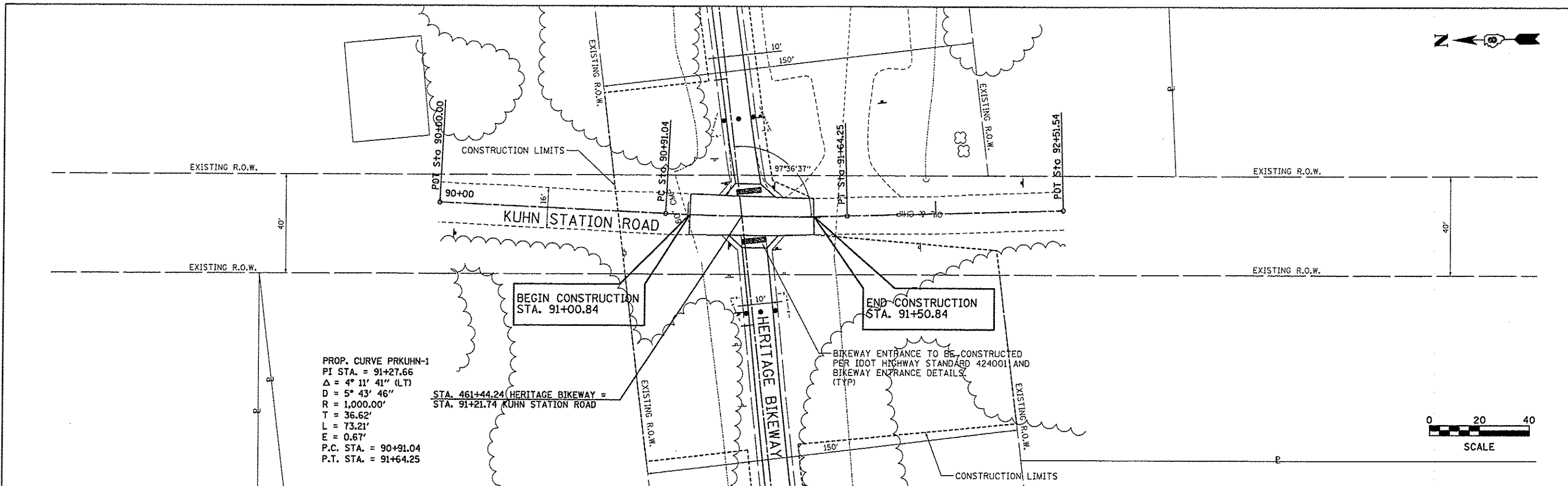


DATE	
BY	
REVISIONS	
NO.	
DESCRIPTION	
DATE	
BY	
NO.	
DESCRIPTION	
DATE	
BY	
NO.	
DESCRIPTION	

DATE	
BY	
REVISIONS	
NO.	
DESCRIPTION	
DATE	
BY	
NO.	
DESCRIPTION	
DATE	
BY	
NO.	
DESCRIPTION	



NOTE:  
 THE BASELINE AS SHOWN HEREON IS BASED ON A CONTINUOUS MATHEMATICAL ALIGNMENT RUNNING THE LENGTH OF THE PROJECT AND IS PROVIDED FOR STATION/LOCATION REFERENCE ONLY. EXCEPT WHERE SPECIFICALLY DESIGNATED, RECONSTRUCTION OF THE TRAIL SHALL BE CENTERED OVER THE EXISTING TRAIL. VERTICAL PROFILE ADJUSTMENTS AS DEPICTED ON THE PLANS REFLECT PROFILE CORRECTIONS INTENDED ALONG A LINE CENTERED OVER THE EXISTING TRAIL SURFACE.

FILE NAME * Crossroad.pln9.dgn	USER NAME * Jeremy	DESIGNED - SAS	REVISED -	<b>MADISON COUNTY TRANSIT DISTRICT HERITAGE BIKEWAY</b>	<b>KUHN STATION ROAD PLAN AND PROFILE</b>			F.A. RTE.	SECTION	COUNTY	TOTAL SHEETS	SHEET NO.
		DRAWN - JDH	REVISED -		SCALE: 1"=20'	SHEET NO. 6 OF 8 SHEETS	STA. 90+00.00 TO STA. 92+51.54	06-00016-00-BT	MADISON	310	67	
		CHECKED - WJB	REVISED -					CONTRACT NO. 97433				
		DATE - 11/30/12	REVISED -					ILLINOIS FED. AID PROJECT				