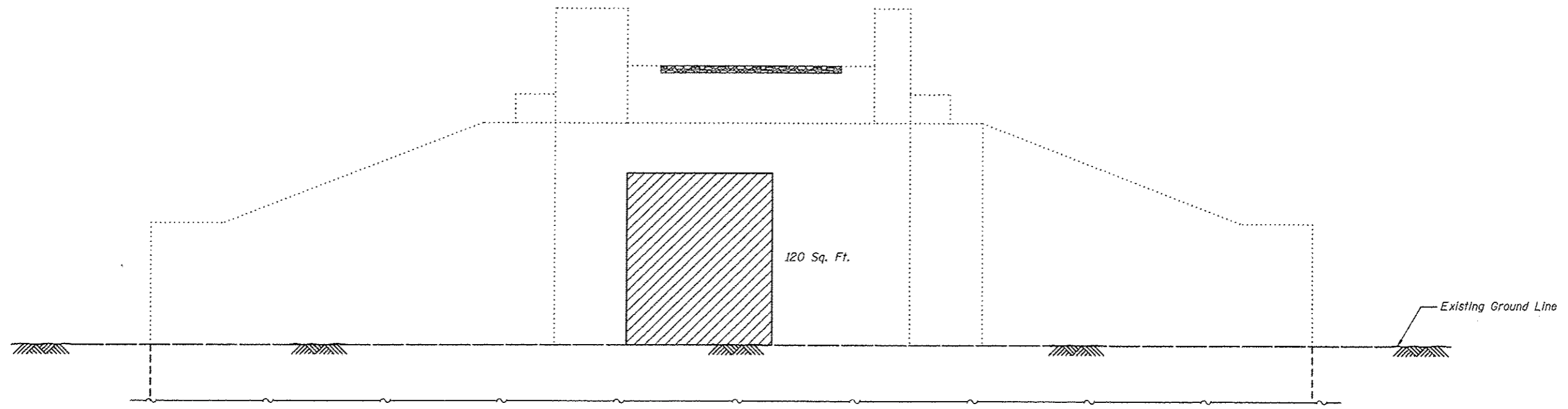



F.A.U. RTE.	SECTION	COUNTY	TOTAL SHEETS	SHEET NO.
	06-00016-00-BT	MADISON	310	244
FED. ROAD DIST. NO.	ILLINOIS	CONTRACT NO. 97433		




East Abutment
(Looking East)

Legend

 Remove deterioration down to sound concrete. Fill Area with Structural Repair Concrete.

**SUBSTRUCTURE REPAIR
BILL OF MATERIAL**

Item	Unit	Quantity
Structural Repair	Sq. Ft.	120

 Juneau Associates, Inc. P.C. <small>CONSULTING ENGINEERS AND LAND SURVEYORS</small> 2180 State Street, P.O. Box 1025 Granite City, Illinois 62040 Phone: (618) 827-1100 Fax: (618) 827-0511		EAST ABUTMENT GLEN CARBON HERITAGE BIKE TRAIL OVER INERSTATE 55 MADISON COUNTY STATION 389+60 STRUCTURE 12	
		SCALE: NOT TO SCALE, FOLLOW DIMENSIONS	
NO.	DATE	BY	REMARKS
DGN NAME:		JOB NO. E064403	DGN. NO.

12/21/2012 8:06:45 AM W:\STRUCT\E064403 MCT Heritage Trail\Drawings\Structure #12\Proposed Structure (07-2012)\07-08(243-244) East & West Abutment.dgn