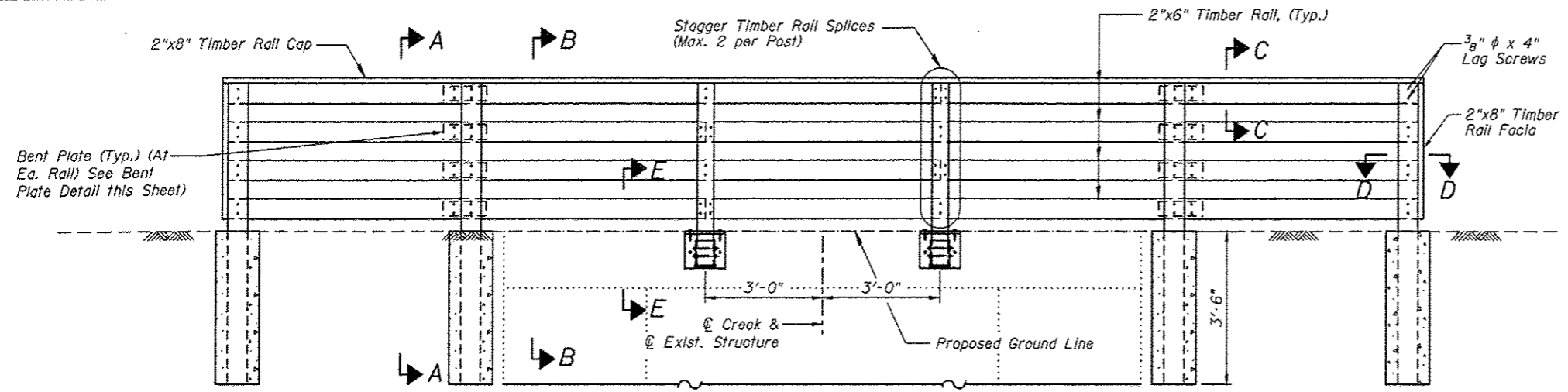
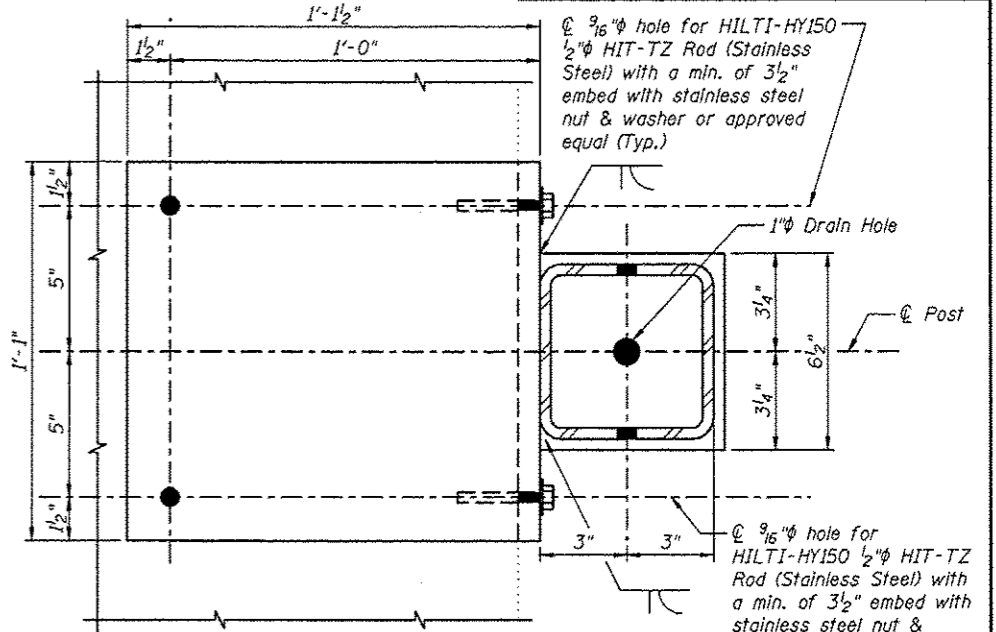


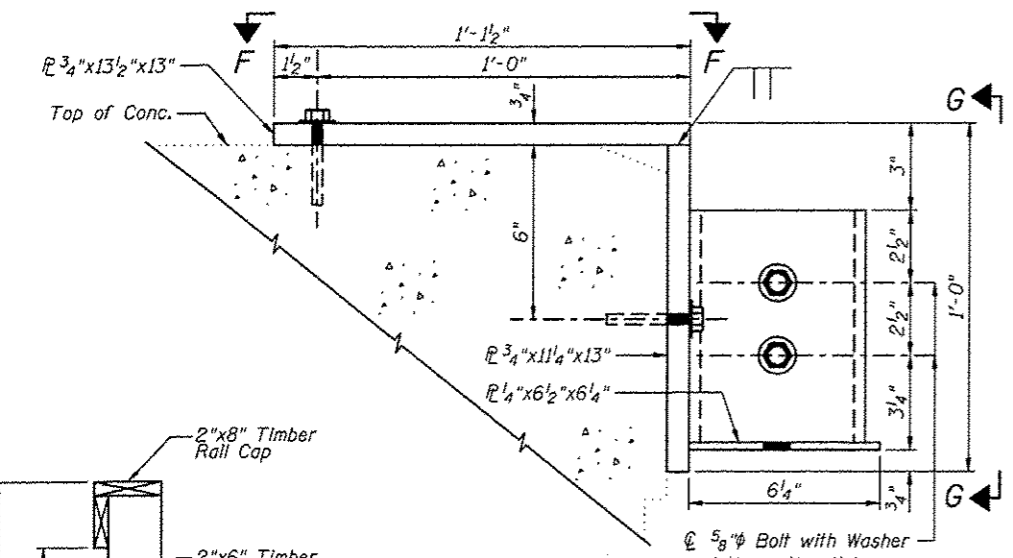
F.A.U. RTE.	SECTION	COUNTY	TOTAL SHEETS	SHEET NO.
06-00016-00-BT	MADISON	310	246	
FED. ROAD DIST. NO.	ILLINOIS CONTRACT NO. 97433			



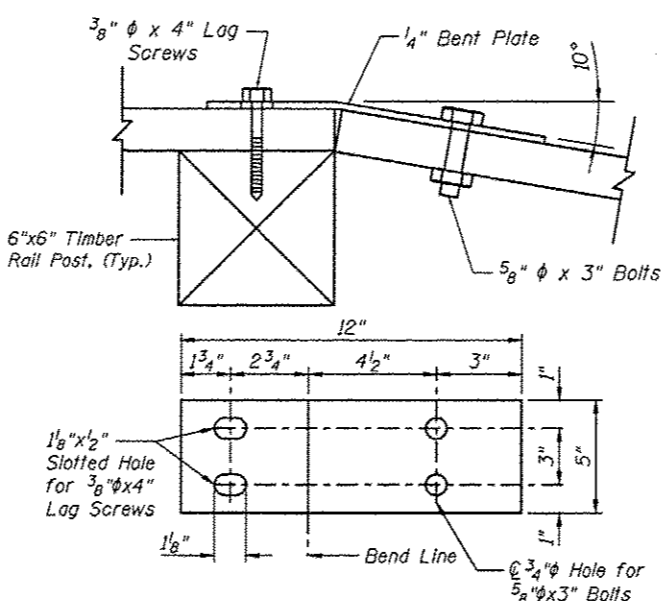
**NORTH WOOD RAIL ELEVATION**  
(Looking South)



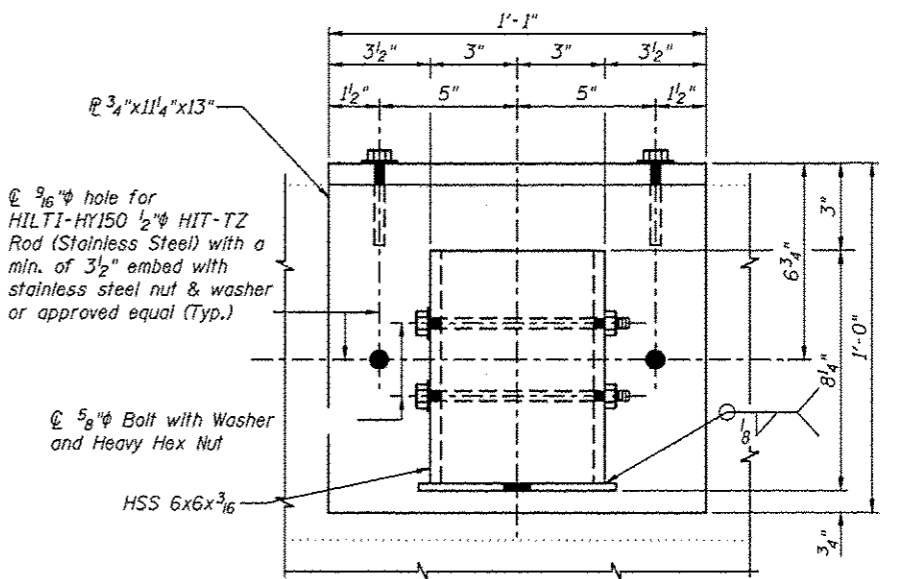
**VIEW F-F**



**SECTION E-E**



**BENT PLATE DETAIL**



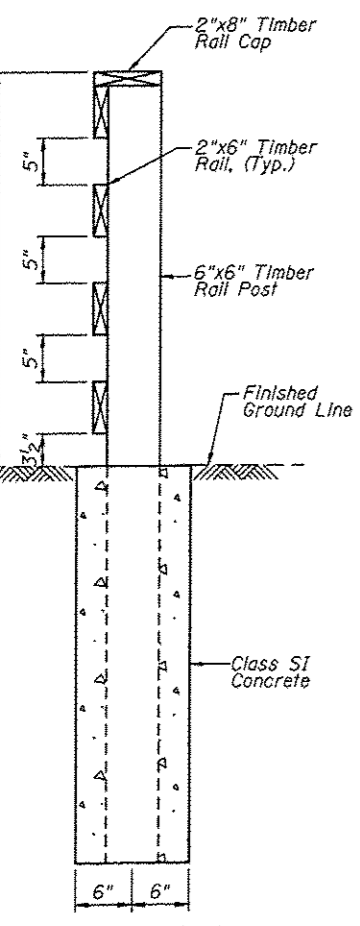
**VIEW G-G**

Note:

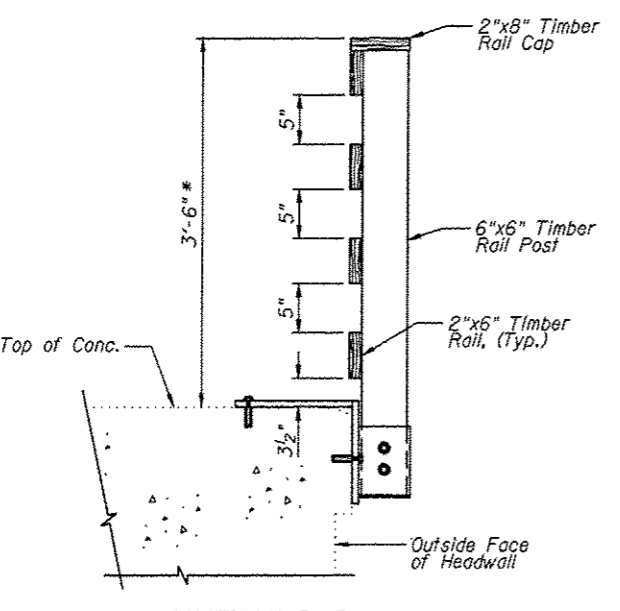
No splices allowed on end railing.

Payment for furnishing & installing all material, necessary to construct the wood rail, including all steel tubing, plates, hot dipped galvanizing, anchors, posts, rails, rail cap, bent plate, hardware, excavation, Class SI concrete, field drilling into existing concrete and all other appurtenances and incidental work, complete in place, will be considered completely covered by the contract unit price per foot for Wood Rail.

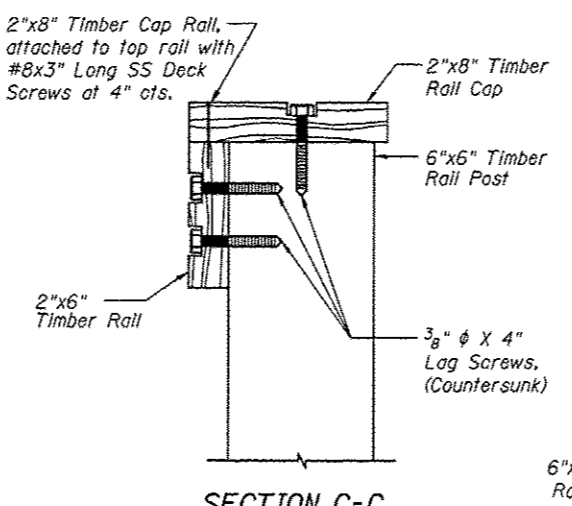
\* Top of top timber rail shall be installed a minimum of 3'-6" above the finished groundline. Adjust post length according in field.



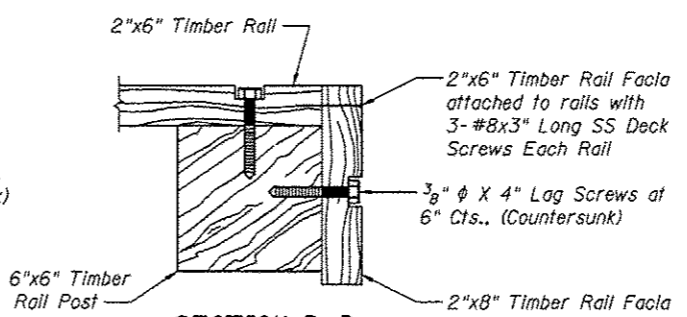
**SECTION A-A**



**SECTION B-B**



**SECTION C-C**



**SECTION D-D**

REVISIONS				SCALE:	
NO.	DATE	BY	REMARKS	NOT TO SCALE, FOLLOW DIMENSIONS	
				DSN. BY:	DB
				DATE:	10/18/12
				DWN. BY:	EER
				DATE:	10/18/12
				CHK'D:	WNH
				DATE:	10/18/12
DGN. NAME:				JOB NO. E064403	DGN. NO.

**Juneau Associates, Inc. P.C.**  
CONSULTING ENGINEERS AND LAND SURVEYORS  
2150 North 1st Street, P.O. Box 1525  
Juneau, Alaska 99801  
Phone: (907) 586-1100  
Fax: (907) 586-1101

**GLEN CARBON HERITAGE  
BIKE TRAIL OVER JUDY'S BRANCH  
MADISON COUNTY  
STATION 217+58  
STRUCTURE 13**

**246**

OF 210 SHEETS

Printed: 10/16/12 12/21/2012 \\FA\STRUCT\064403\HMT\Heritage Trail\Drawings\Structure 13\Proposed Structure 13-2012\102K246 Elevations.dgn