

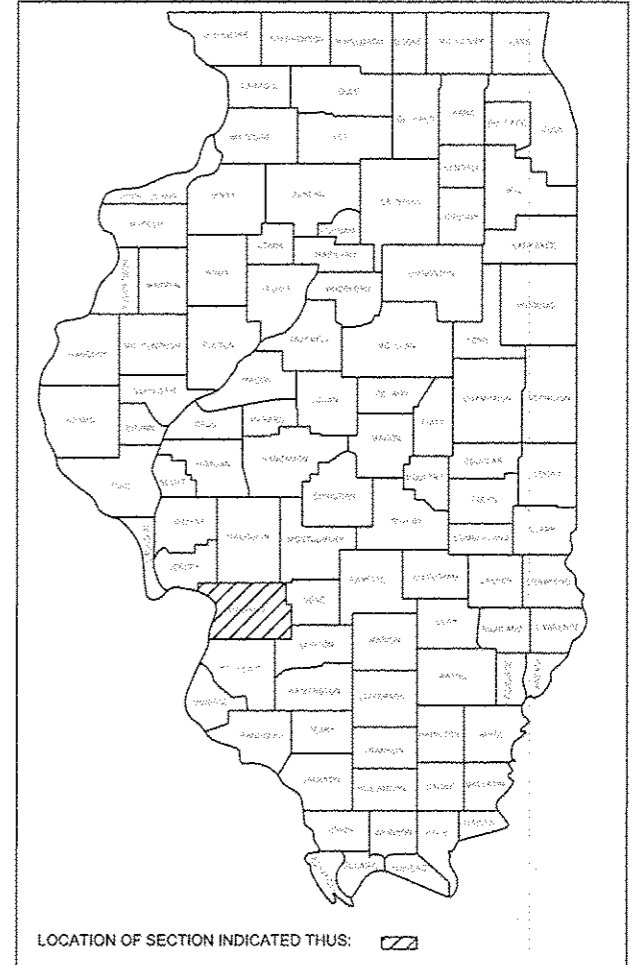
STATE OF ILLINOIS DEPARTMENT OF TRANSPORTATION PLANS FOR PROPOSED IMPROVEMENT CITY OF EDWARDSVILLE FAP ROUTE 789 (IL ROUTE 159/143) SECTION 10-00085-01-LS MADISON COUNTY JOB NO. C-98-355-10 PROJECT NO. TE-0008(145)



Lance D. Chrisman
 LANCE D. CHRISMAN
 LICENSE NO. 062-056127
 SHEET RANGE 1-9, & 17-18
 DATE 10/12/12
 EXPIRES: 11-30-2013



Bruce E. Coleman
 BRUCE E. COLEMAN
 LICENSE NO. 062-046799
 SHEET RANGE 10-16
 DATE 10/10/12
 EXPIRES: 11-30-2013



INDEX OF SHEETS

- 1 COVER SHEET
- 2 GENERAL NOTES
- 3 SUMMARY OF QUANTITIES
- 4 ROADWAY SCHEDULES
- 5-9 ROADWAY PLANS
- 10-14 STREETSCAPE LIGHTING PLANS
- 15 ELECTRICAL SCHEDULES AND DETAILS
- 16 ELECTRICAL SCHEDULES
- 17 ROADWAY DETAILS & TYPICAL SECTIONS
- 18 ROADWAY DETAILS & ENTRANCE SCHEDULE

15A ELECTRICAL DETAILS *Added 2/25/13*

STANDARD NO. DESCRIPTION

000001-06	STANDARD SYMBOLS, ABBREVIATIONS AND PATTERNS
280001-07	TEMPORARY EROSION CONTROL SYSTEMS
424001-07	PERPENDICULAR CURB RAMPS FOR SIDEWALKS
442201-03	CLASS C AND D PATCHES
605001-05	CONCRETE CURB TYPE B AND COMBINATION CONCRETE CURB AND GUTTER
701006-04	OFF-ROAD OPERATIONS, 2L, 2W, 15' TO 24" FROM PAVEMENT EDGE
701301-04	LANE CLOSURE, 2L, 2W, SHORT TIME OPERATIONS
701502-05	URBAN LANE CLOSURE, 2L, 2W, WITH BIDIRECTIONAL LEFT TURN LANE
701801-05	LANE CLOSURE MULTILANE 1W OR 2W CROSSWALK OR SIDEWALK CLOSURE
701901-02	TRAFFIC CONTROL DEVICES
780001-03	TYPICAL PAVEMENT MARKINGS

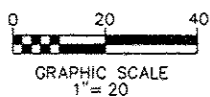
UTILITIES

CITY OF EDWARDSVILLE (WATER AND SEWER)
 200 EAST PARK STREET
 EDWARDSVILLE, IL 62025
 (618)692-7535

CHARTER COMMUNICATIONS (CABLE TV)
 210 WEST DIVISION STREET
 MARYVILLE, IL 62062
 (888)438-2427

AMEREN IP (GAS AND ELECTRIC)
 2500 NORTH CENTER STREET
 MARYVILLE, IL 62062
 (618)346-1294

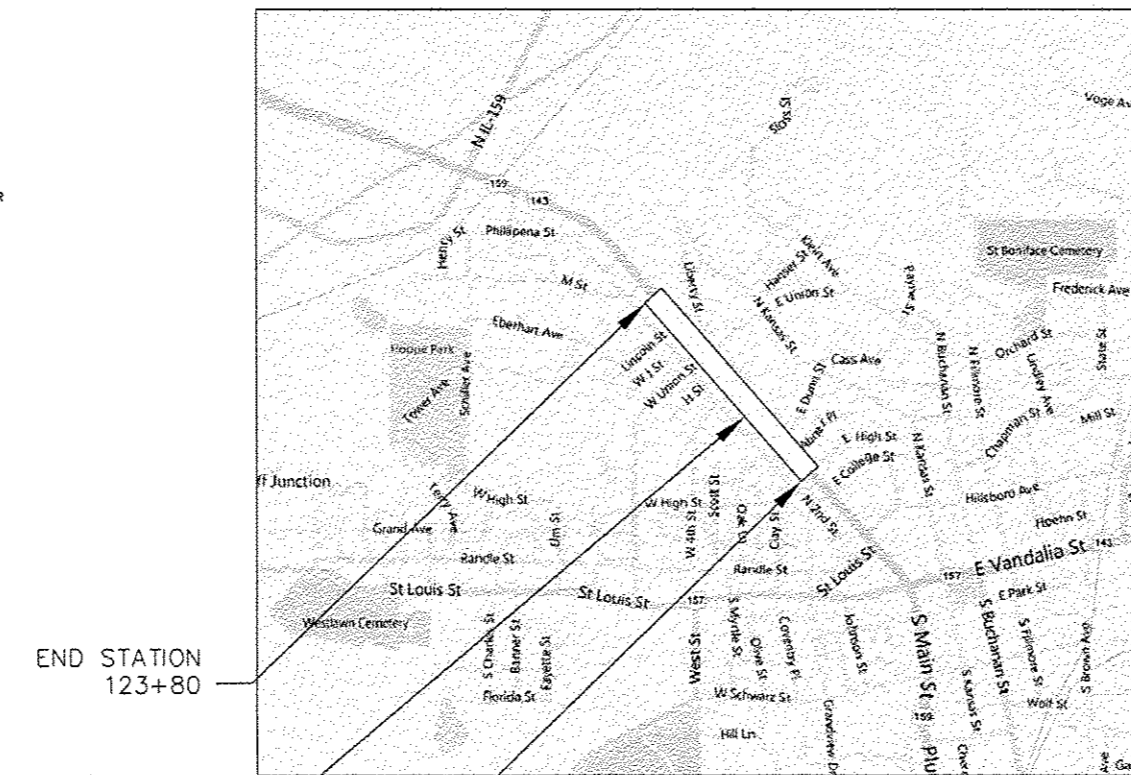
AT&T (TELEPHONE)
 2100 TROY ROAD
 EDWARDSVILLE, IL 62025
 (618)307-1900



GRAPHIC SCALES TO BE USED ARE SHOWN ACCORDINGLY ON EACH PLAN SHEET

J.U.L.I.E.
 JOINT UTILITY LOCATION INFORMATION FOR EXCAVATION
 1-800-892-0123

SCALES:
 PLAN: 1" = 20'



END STATION
123+80

PROJECT LOCATION

BEGIN STATION
100+10

LOCATION MAP
NOT TO SCALE

LENGTH OF PROJECT
IL ROUTE 159 = 2370 FEET (0.45 MILES)



STATE OF ILLINOIS DEPARTMENT OF TRANSPORTATION DIVISION OF HIGHWAYS	
APPROVED	 10/9/2012 CITY OF EDWARDSVILLE, MAYOR
PASSED	 January 14, 2013 DISTRICT 8 ENGINEER OF LOCAL ROADS & STREETS
RELEASING FOR BID BASED ON LIMITED REVIEW	 January 14, 2013 DEPUTY DIRECTOR OF HIGHWAYS, REGION 5 ENGINEER

PRINTED BY AUTHORITY OF THE STATE OF ILLINOIS

PREPARED BY:

BRiC
 PARTNERSHIP, LLC
 CONSULTING ENGINEERS
101 STATE WASHINGTON CENTER 200
 BELLVIEW, IL 62209
 TEL: 618-277-2800
 FAX: 618-277-2221

Kaskaskia
 Engineering Group, LLC

PROFESSIONAL REGISTRATIONS
 Illinois Professional Design Firm
 Professional Engineering Group

208 East Main Street, Suite 100
 Belleville, Illinois 62220
 618.233.5877 phone
 618.233.5977 fax
 www.kaskaskiaeng.com

LICENSE NO.
 134.004773
 20-5080586

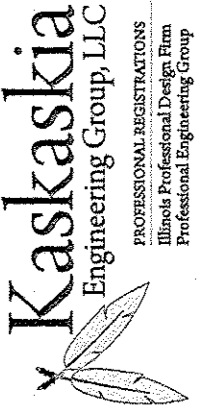
SUMMARY OF QUANTITIES

CODE NO.	ITEM	UNIT	TOTAL QUANTITIES	ROADWAY QUANTITIES	LIGHTING QUANTITIES
	25000110 SEEDING, CLASS 1A	ACRE	0.25	0.25	
*	40201000 AGGREGATE FOR TEMPORARY ACCESS	TON	155	155	
*	40800050 INCIDENTAL HOT-MIX ASPHALT SURFACING	TON	5	5	
*	42300200 PORTLAND CEMENT CONCRETE DRIVEWAY PAVEMENT, 6 INCH	SQ YD	12	12	
*	42300400 PORTLAND CEMENT CONCRETE DRIVEWAY PAVEMENT, 8 INCH	SQ YD	347	347	
*	42400200 PORTLAND CEMENT CONCRETE SIDEWALK 5 INCH	SQ FT	7,618	7,618	
*	42400800 DETECTABLE WARNINGS	SQ FT	151	151	
*	44000200 DRIVEWAY PAVEMENT REMOVAL	SQ YD	368	368	
*	44000500 COMBINATION CURB AND GUTTER REMOVAL	FOOT	886	886	
*	44000600 SIDEWALK REMOVAL	SQ FT	6,615	6,615	
*	44201785 CLASS D PATCHES, TYPE I, 12 INCH	SQ YD	6	6	
*	44201789 CLASS D PATCHES, TYPE II, 12 INCH	SQ YD	8	8	
*	60600605 CONCRETE CURB, TYPE B	FOOT	18	18	
	67100100 MOBILIZATION	L SUM	1	1	
*	78000600 THERMOPLASTIC PAVEMENT MARKING - LINE 12"	FOOT	487	487	
*	78000650 THERMOPLASTIC PAVEMENT MARKING - LINE 24"	FOOT	282	282	
	80400100 ELECTRIC SERVICE INSTALLATION	EACH	1		1
	81028350 UNDERGROUND CONDUIT, PVC, 2" DIA.	FOOT	3,055		3,055
	81702110 ELECTRIC CABLE IN CONDUIT, 600V (XLP-TYPE USE) 1/C NO. 10	FOOT	8,685		8,685
	81702120 ELECTRIC CABLE IN CONDUIT, 600V (XLP-TYPE USE) 1/C NO. 8	FOOT	19,480		19,480
	81702130 ELECTRIC CABLE IN CONDUIT, 600V (XLP-TYPE USE) 1/C NO. 6	FOOT	4,004		4,004
	81702140 ELECTRIC CABLE IN CONDUIT, 600V (XLP-TYPE USE) 1/C NO. 4	FOOT	7,802		7,802
	81702150 ELECTRIC CABLE IN CONDUIT, 600V (XLP-TYPE USE) 1/C NO. 2	FOOT	4,148		4,148
	84200500 REMOVAL OF LIGHTING UNIT, SALVAGE	EACH	1		1
	X6064200 COMBINATION CONCRETE CURB AND GUTTER, TYPE B-6.12 (SPECIAL)	FOOT	921	921	
	X7010216 TRAFFIC CONTROL AND PROTECTION, (SPECIAL)	L SUM	1	1	
	X8140105 HANDHOLE (SPECIAL)	EACH	38		38
	X8360310 LIGHT POLE FOUNDATION, 30" DIAMETER, SPECIAL	FOOT	140		140
	XX007393 DECORATIVE LIGHT TYPE A	EACH	56		56
	XX007394 DECORATIVE LIGHT TYPE B	EACH	20		20
	X8040102 ELECTRIC SERVICE INSTALLATION, SPECIAL	EACH	1		1

* DENOTES SPECIALTY ITEM

1 2/20/2013

208 East Main Street, Suite 100
 Bellville, Illinois 62220
 618.233.5877 phone
 618.233.5977 fax
 www.kaskaskiaeng.com



LICENSE NO. 184.004773
 PROFESSIONAL REGISTRATIONS
 Illinois Professional Design Firm
 Professional Engineering Group

PREPARED BY:

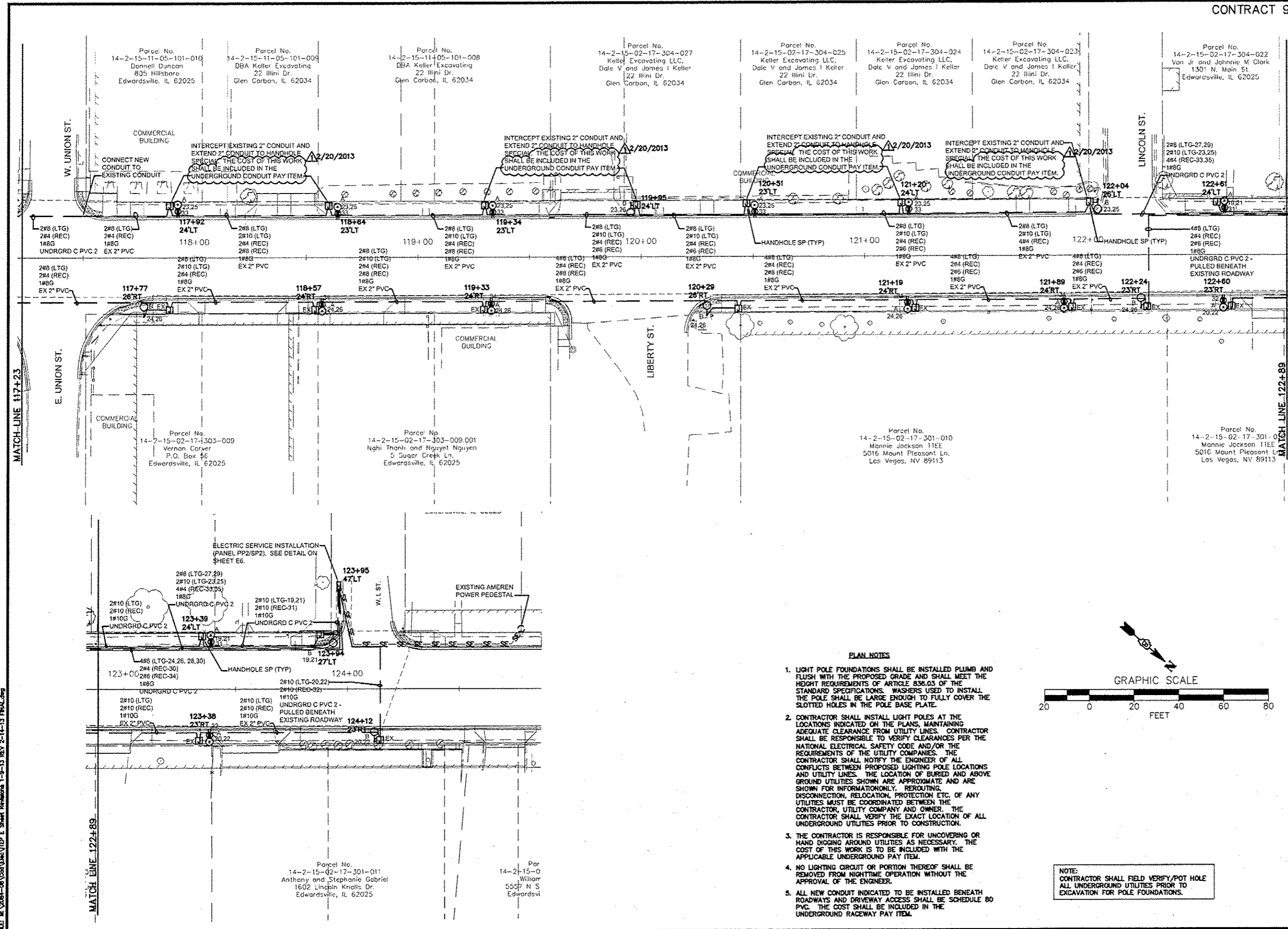
SUMMARY OF QUANTITIES

SEC 10-00085-01-LS
 NORTH MAIN STREET STREETScape
 CITY OF EDWARDSVILLE, ILLINOIS

SHEET TITLE:

PROJECT TITLE:

DESIGNED BY: LDC	3
DRAWN BY: SMS	
CHECKED BY: GEB	
DATE OF PRE-FINAL: 8/17/12	
DATE OF FINAL: 10/12/12	
SHEET NO. 3 OF 18 SHEETS	
PROJECT NUMBER 09-1074.01	



208 East Main Street, Suite 100
 Ballerille, Illinois 62220
 618.233.5877 phone
 618.233.5977 fax
 www.kaskaskia.com

Kaskaskia
 Engineering Group, LLC

PROFESSIONAL REGISTRATIONS
 Illinois Professional Design Firm
 Professional Engineering Group

LICENSE NO. 184.004773
 20-50805896

BRIC
 PARTNERSHIP, LLC

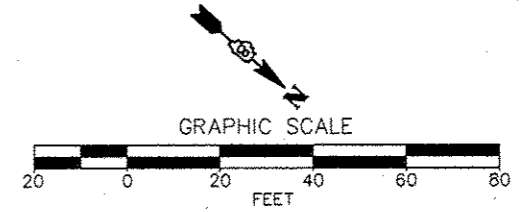
CONSULTING ENGINEERS
 100 EAST WASHINGTON, SUITE 220
 BALEVILLE, ILL. 62220
 TEL. 618.277.6220
 FAX. 618.277.3227

SHEET TITLE: **STREETSCAPE LIGHTING PLAN**

PROJECT TITLE: **SEC 10-00085-01-LS
 NORTH MAIN STREET STREETSCAPE
 CITY OF EDWARDSVILLE, ILLINOIS**

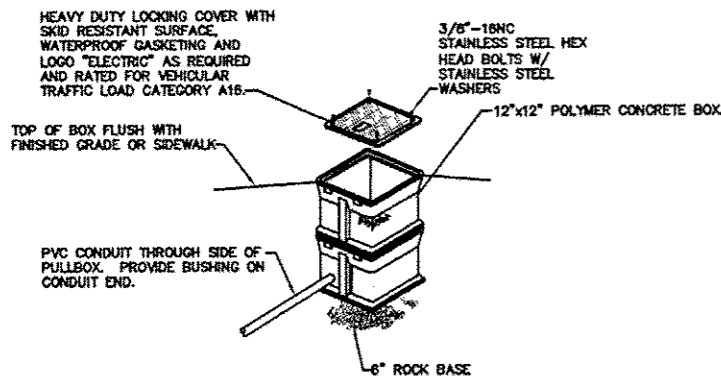
DESIGNED BY:	JEN	SEAL
DRAWN BY:	JEN	
CHECKED BY:	RJD	
DATE OF PRE-FINAL:	8/17/12	E4
DATE OF FINAL:	10/12/12	
SHEET NO. 11 OF 18 SHEETS		
PROJECT NUMBER 09-1024.01		

- PLAN NOTES**
1. LIGHT POLE FOUNDATIONS SHALL BE INSTALLED PLUMB AND FLUSH WITH THE PROPOSED GRADE AND SHALL MEET THE HEIGHT REQUIREMENTS OF ARTICLE 836.03 OF THE STANDARD SPECIFICATIONS. WASHERS USED TO INSTALL THE POLE SHALL BE LARGE ENOUGH TO FULLY COVER THE SLOTTED HOLES IN THE POLE BASE PLATE.
 2. CONTRACTOR SHALL INSTALL LIGHT POLES AT THE LOCATIONS INDICATED ON THE PLANS, MAINTAINING ADEQUATE CLEARANCE FROM UTILITY LINES. CONTRACTOR SHALL BE RESPONSIBLE TO VERIFY CLEARANCES PER THE NATIONAL ELECTRICAL SAFETY CODE AND/OR THE REQUIREMENTS OF THE UTILITY COMPANIES. THE CONTRACTOR SHALL NOTIFY THE ENGINEER OF ALL CONFLICTS BETWEEN PROPOSED LIGHTING POLE LOCATIONS AND UTILITY LINES. THE LOCATION OF BURIED AND ABOVE GROUND UTILITIES SHOWN ARE APPROXIMATE AND ARE SHOWN FOR INFORMATION ONLY. REROUTING, DISCONNECTION, RELOCATION, PROTECTION ETC. OF ANY UTILITIES MUST BE COORDINATED BETWEEN THE CONTRACTOR, UTILITY COMPANY AND OWNER. THE CONTRACTOR SHALL VERIFY THE EXACT LOCATION OF ALL UNDERGROUND UTILITIES PRIOR TO CONSTRUCTION.
 3. THE CONTRACTOR IS RESPONSIBLE FOR UNCOVERING OR HAND DIGGING AROUND UTILITIES AS NECESSARY. THE COST OF THIS WORK IS TO BE INCLUDED WITH THE APPLICABLE UNDERGROUND PAY ITEM.
 4. NO LIGHTING CIRCUIT OR PORTION THEREOF SHALL BE REMOVED FROM NIGHTTIME OPERATION WITHOUT THE APPROVAL OF THE ENGINEER.
 5. ALL NEW CONDUIT INDICATED TO BE INSTALLED BENEATH ROADWAYS AND DRIVEWAY ACCESS SHALL BE SCHEDULE B0 PVC. THE COST SHALL BE INCLUDED IN THE UNDERGROUND RACEWAY PAY ITEM.



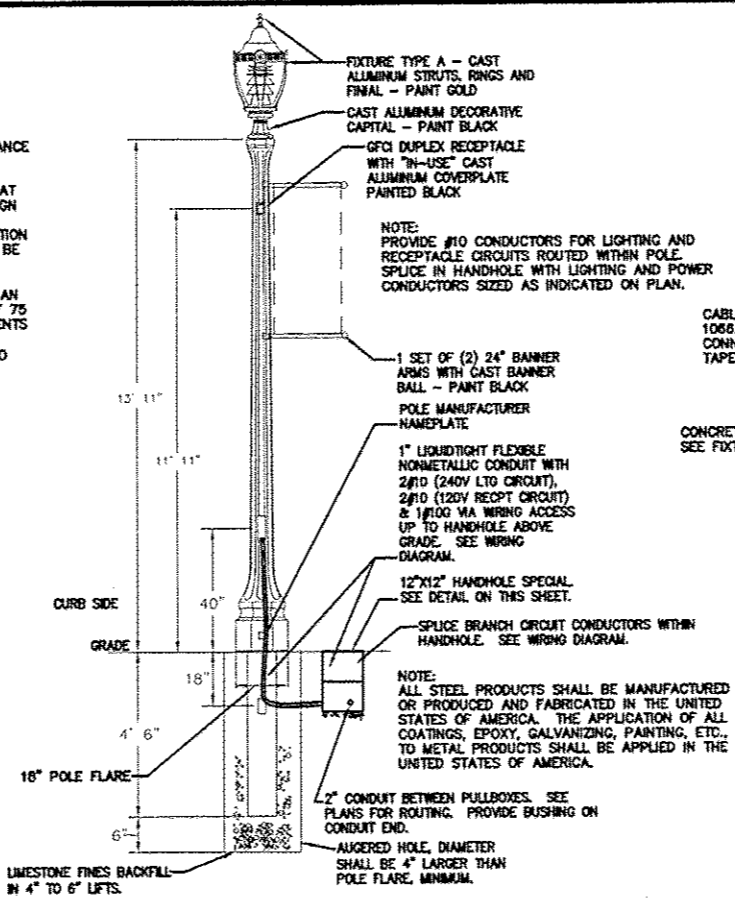
NOTE: CONTRACTOR SHALL FIELD VERIFY/POT HOLE ALL UNDERGROUND UTILITIES PRIOR TO EXCAVATION FOR POLE FOUNDATIONS.

FILE: H:\2084-08\CON\DWG\TOP E Sheet_Rediseno 1-9-13 REV 2-14-13 FINAL.dwg



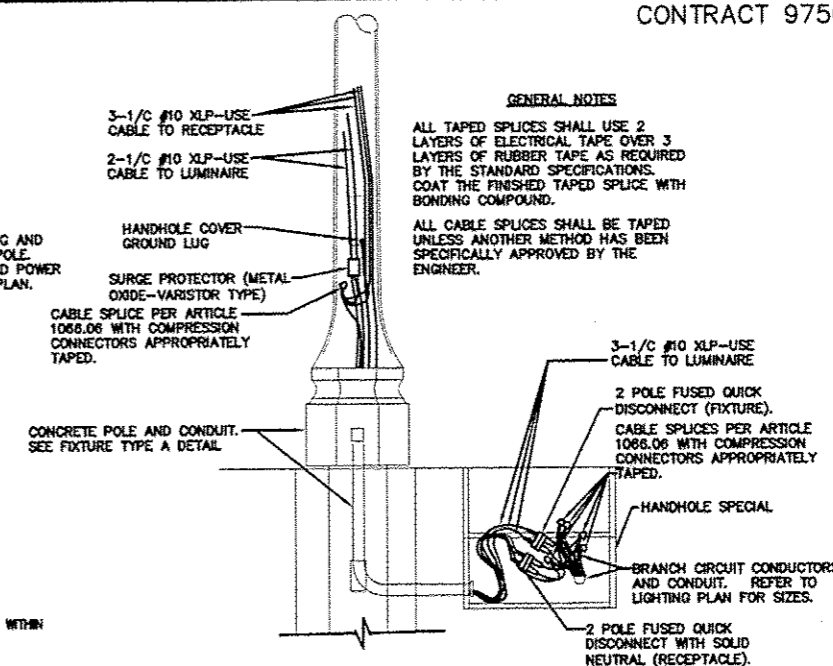
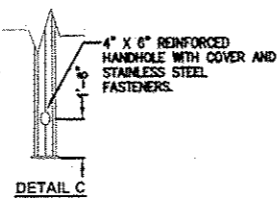
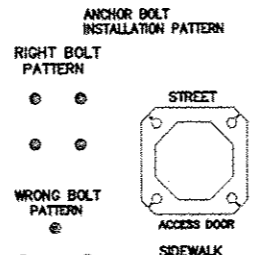
HANDHOLE SPECIAL INSTALLATION DETAIL
NOT TO SCALE PAY CODE: HANDHOLE SPECIAL

POLES SHALL BE MANUFACTURED IN ACCORDANCE WITH AASHTO STANDARD SPECIFICATIONS FOR STRUCTURAL SUPPORTS FOR HIGHWAY SIGNS, LUMINAIRES AND TRAFFIC SIGNALS, CURRENT AT THE TIME THE PROJECT IS ADVERTISED. DESIGN WIND VELOCITY SHALL BE 90 MPH WITH A MINIMUM DESIGN LIFE OF 50 YEARS. IN ADDITION TO THE AASHTO CRITERIA, THE POLES SHALL BE DESIGNED FOR THE WORST CASE LOADING CONDITION SET FORTH IN DOT SPECIFICATION 1089.01(c) FOR A DESIGN LUMINAIRE HAVING AN EPA OF 1.6 SQ. FT. AND MAXIMUM WEIGHT OF 75 LB. IN ADDITION TO THE LOADING REQUIREMENTS OF ARTICLE 1089.01(c) THE POLE SHALL BE DESIGNED TO WITHSTAND ALL LOADING DUE TO ATTACHMENTS.



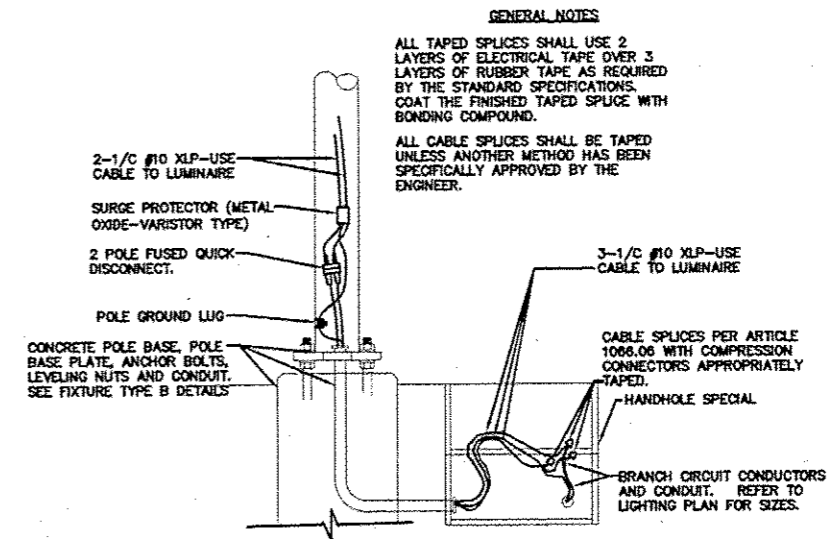
FIXTURE TYPE A POLE DETAIL
NOT TO SCALE PAY CODE: DECORATIVE LIGHT TYPE A

SUGGESTED BOLT PROJECTION RANGE ABOVE FOUNDATION SURFACE IF LEVELING NUT IS USED:
1" BOLT DIA. - 4" MIN. - 5" MAX.
DATA BASED ON STANDARD CATALOG APPLICATION. IF LEVELING NUTS IS NOT USED OR OTHER SPECIAL CONDITIONS EXIST, FIELD ADJUST ACCORDINGLY.



FIXTURE TYPE A WIRING DETAIL
NOT TO SCALE

GENERAL NOTES
ALL TAPED SPLICES SHALL USE 2 LAYERS OF RUBBER TAPE OVER 3 LAYERS OF RUBBER TAPE AS REQUIRED BY THE STANDARD SPECIFICATIONS. COAT THE FINISHED TAPED SPLICE WITH BONDING COMPOUND.
ALL CABLE SPLICES SHALL BE TAPED UNLESS ANOTHER METHOD HAS BEEN SPECIFICALLY APPROVED BY THE ENGINEER.



FIXTURE TYPE B WIRING DETAIL
NOT TO SCALE

GENERAL NOTES
ALL TAPED SPLICES SHALL USE 2 LAYERS OF RUBBER TAPE OVER 3 LAYERS OF RUBBER TAPE AS REQUIRED BY THE STANDARD SPECIFICATIONS. COAT THE FINISHED TAPED SPLICE WITH BONDING COMPOUND.
ALL CABLE SPLICES SHALL BE TAPED UNLESS ANOTHER METHOD HAS BEEN SPECIFICALLY APPROVED BY THE ENGINEER.

NOTE: PROVIDE #10 CONDUCTORS FOR LIGHTING CIRCUIT ROUTED WITHIN POLE/ARM. SPLICE IN HANDHOLE WITH LIGHTING CONDUCTORS SIZED AS INDICATED ON PLAN.

NOTE: ALL STEEL PRODUCTS SHALL BE MANUFACTURED OR PRODUCED AND FABRICATED IN THE UNITED STATES OF AMERICA. THE APPLICATION OF ALL COATINGS, EPOXY, GALVANIZING, PAINTING, ETC., TO METAL PRODUCTS SHALL BE APPLIED IN THE UNITED STATES OF AMERICA.

SPLICE BRANCH CIRCUIT CONDUCTORS WITHIN HANDHOLE. SEE WIRING DIAGRAM.

12"x12" HANDHOLE SPECIAL. SEE DETAIL ON THIS SHEET.

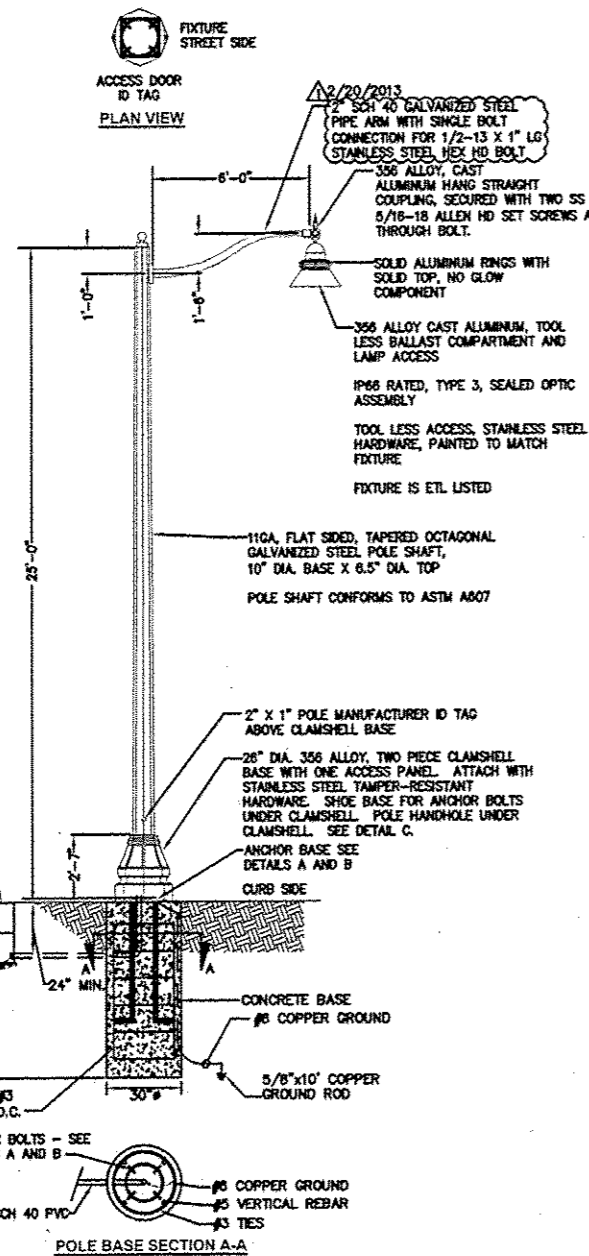
2" CONDUIT BETWEEN PULLBOXES. SEE PLANS FOR ROUTING. PROVIDE BUSHING ON CONDUIT END.

3/4" SCH 40 PVC WITH BUSHING ON CONDUIT END.

(4) #5 WITH #5 TIES AT 12" O.C.

ANCHOR BOLTS - SEE DETAILS A AND B.

POLE BASE SECTION A-A.



FIXTURE TYPE B POLE DETAIL
NOT TO SCALE PAY CODES: DECORATIVE LIGHT TYPE B AND LIGHT POLE FDN 30" DIA. SPL(FIT)

LIGHT FIXTURE SCHEDULE				
TYPE	VOLTAGE	LAMPS	MOUNTING	DESCRIPTION & REMARKS
A	240	(1) 150W PSMH	POLE	CITY OF EDWARDSVILLE STANDARD POST TOP FIXTURE WITH DIRECT BURY CONCRETE POLE WITH BANNER ARMS AND GFCI RECEPT WITH "IN-USE" COVER. SEE DETAIL ON THIS SHEET FOR INSTALLATION.
B	240	(1) 250W PSMH	POLE	CITY OF EDWARDSVILLE STANDARD DECORATIVE ARM MOUNT FIXTURE. SEE DETAIL ON THIS SHEET FOR POLE BASE. PROVIDE FUSING IN POLE HANDHOLE.

108 East Main Street, Suite 100
Belleville, Illinois 62220
618.233.5877 phone
618.233.9977 fax
www.kaskaskiaeng.com

Kaskaskia Engineering Group, LLC

PROFESSIONAL REGISTRATIONS
Illinois Professional Design Firm
Professional Engineering Group

LICENSE NO. 184.004773
20-5080586

PREPARED BY:

BRIC PARTNERSHIP, LLC
CONSULTING ENGINEERS

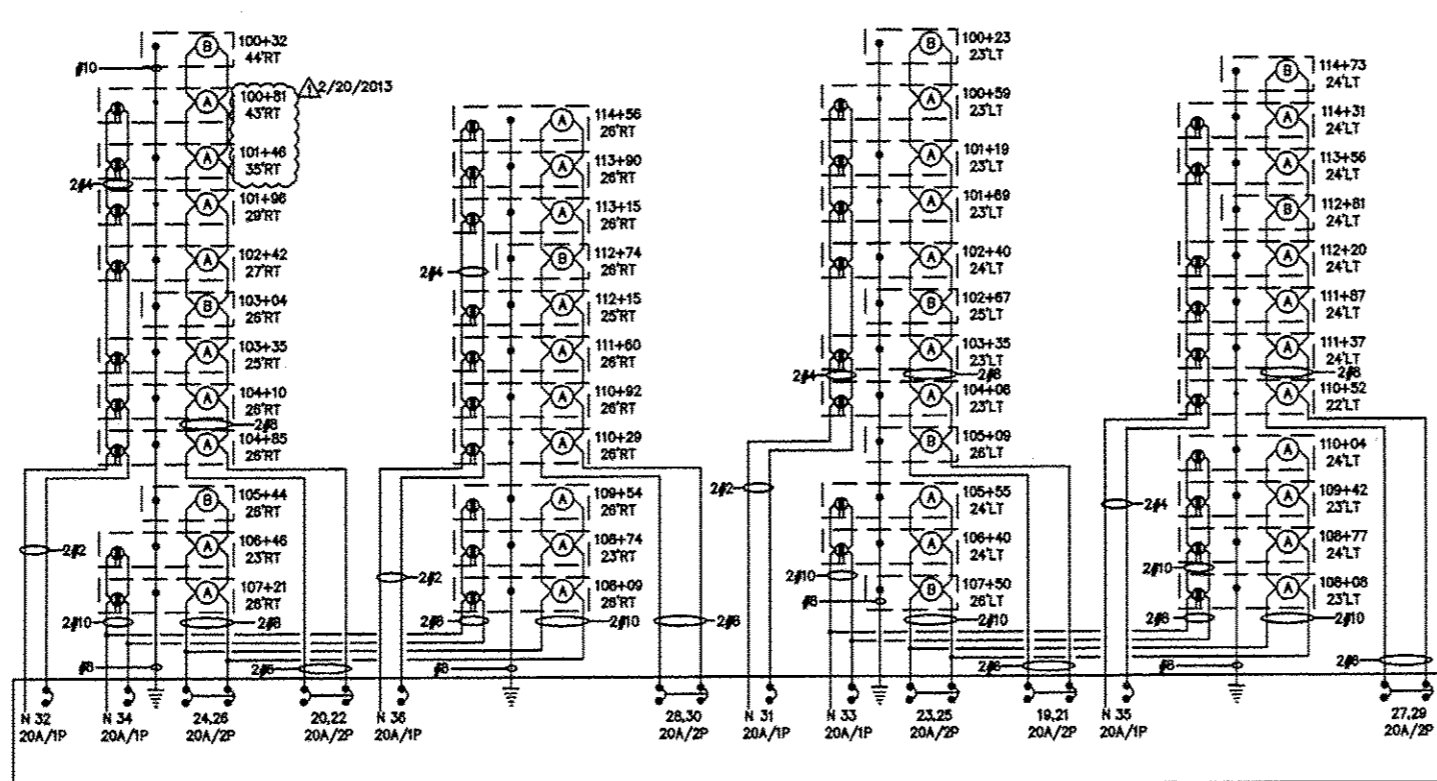
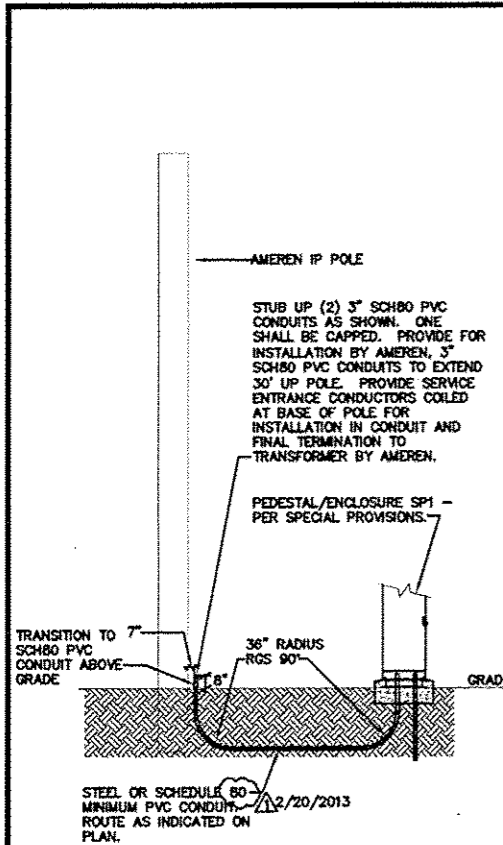
100 EAST WASHINGTON SUITE 220
BELLEVILLE, IL 62220
TEL: 618.277.5200
FAX: 618.277.5227

SECRET TITLE: STREETScape LIGHTING PLAN

PROJECT TITLE: SEC 10-00085-01-LS
NORTH MAIN STREET STREETScape
CITY OF EDWARDSVILLE, ILLINOIS

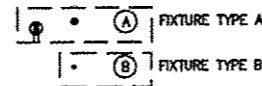
DESIGNED BY: JEN	SECRET
DRAWN BY: JEN	E5
CHECKED BY: RJD	
DATE OF PDS-FINAL: 8/17/12	
DATE OF PIAL: 10/12/12	
SHEET NO. 14 OF 18 SHEETS	
PROJECT NUMBER: 09-1074-01	

FILE: M:\2008-09\0085\01-LS E Sheet Revectors 1-9-13 REV 2-14-13 FINAL.dwg



PANEL SP1 WIRING DIAGRAM

NO SCALE
REFER TO STREETSCAPE LIGHTING PLANS FOR ALL BRANCH CIRCUIT SIZES.
HANDHOLE SPECIAL NOT INDICATED ON WIRING DIAGRAM FOR CLARITY.



ELECTRIC SERVICE INSTALLATION, SPECIAL

NO SCALE

51A 107+56 83' LT

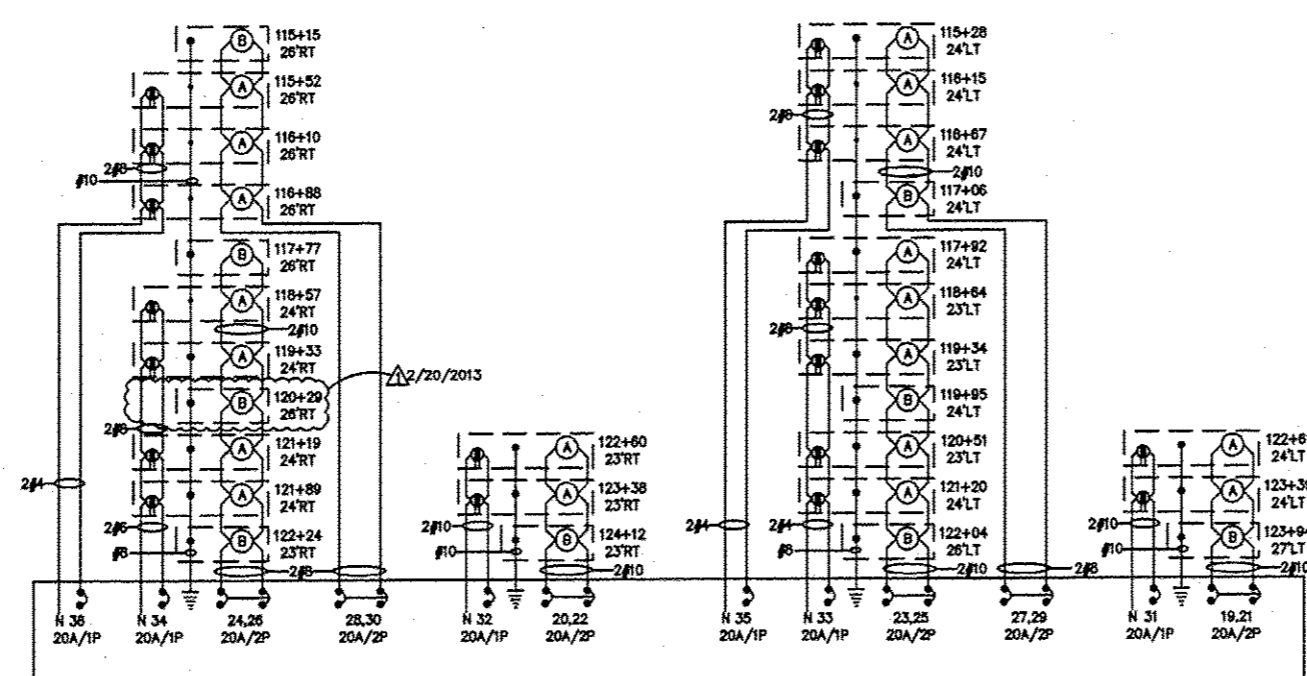
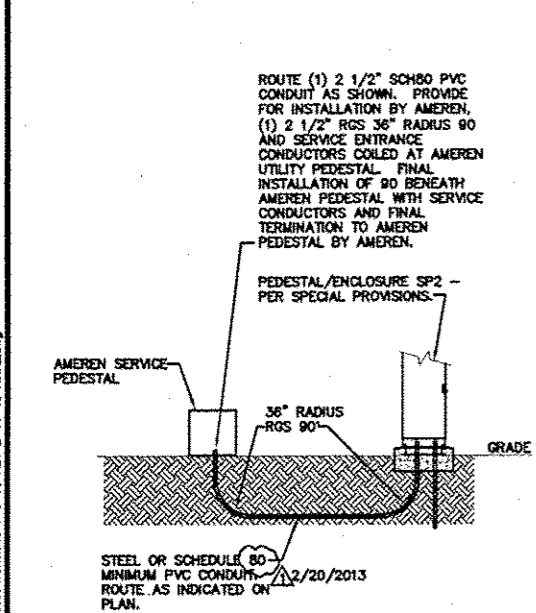
2/20/2013

PANEL NO: PP1							10,000 AIC	
VA	FUNCTION	SIZE	CKT	PH	CKT	SIZE	FUNCTION	VA
-			1	A	2	125A/2P	PANEL SP1	9579
-			3	B	4			6876
	SPACE		5	A	6	20A/1P	CONTROL CIRCUIT	50
	SPACE		7	B	8	20A/1P	PEDESTAL RECP/LT	280
	SPACE		9	A	10		SPACE	
	SPACE		11	B	12		SPACE	
	SPACE		13	A	14		SPACE	
	SPACE		15	B	16		SPACE	
	SPACE		17	A	18		SPACE	
PHASE		A		B		TOTALS		VOLTS: 120/240V, 1φ, 3W
VOLTS		9579		7159		16738		
MAINS:		150 AMP MAIN BREAKER		POLES: 18 POSITIONS		MOUNTING: INSIDE PEDESTAL/ENCLOSURE		

PANEL NO: SP1 (SWITCHED PORTION OF PANEL)							10,000 AIC	
VA	FUNCTION	SIZE	CKT	PH	CKT	SIZE	FUNCTION	VA
998	STREET LIGHTS - WEST SIDE HIGH TO DUNN	20A/2P	19	A	20	20A/2P	STREET LIGHTS - EAST SIDE HIGH TO DUNN	943
998			21	B	22	20A/2P		943
703	STREET LIGHTS - WEST SIDE DUNN TO F	20A/2P	23	A	24	20A/2P	STREET LIGHTS - EAST SIDE DUNN TO F	610
703			25	B	26	20A/2P		610
850	STREET LIGHTS - WEST SIDE F TO H	20A/2P	27	A	28	20A/2P	STREET LIGHTS - EAST SIDE F TO H	795
850			29	B	30	20A/2P		795
1080	RECEPTACLES - W	20A/1P	31	A	32	20A/1P	RECEPTACLES - E	1280
1080	RECEPTACLES - W	20A/1P	33	B	34	20A/1P	RECEPTACLES - E	900
1080	RECEPTACLES - W	20A/1P	35	A	36	20A/1P	RECEPTACLES - E	1280
0	SPARE	20A/1P	37	B	38	20A/1P	SPARE	0
0	SPARE	20A/2P	39	A	40	20A/2P	SPARE	0
0			41	B	42			0
	SPACE		43	A	44		SPACE	
	SPACE		45	B	46		SPACE	
	SPACE		47	A	48		SPACE	
PHASE		A		B		TOTALS		VOLTS: 120/240V, 1φ, 3W
VOLTS		9579		8879		18458		
MAINS:		150 AMP MAIN BREAKER		POLES: 30 POSITIONS		MOUNTING: INSIDE PEDESTAL/ENCLOSURE		

PANEL NO: PP2							10,000 AIC	
VA	FUNCTION	SIZE	CKT	PH	CKT	SIZE	FUNCTION	VA
-			1	A	2	100A/2P	PANEL SP2	4896
-			3	B	4			4716
	SPACE		5	A	6	20A/1P	CONTROL CIRCUIT	50
	SPACE		7	B	8	20A/1P	PEDESTAL RECP/LT	280
	SPACE		9	A	10		SPACE	
	SPACE		11	B	12		SPACE	
	SPACE		13	A	14		SPACE	
	SPACE		15	B	16		SPACE	
	SPACE		17	A	18		SPACE	
PHASE		A		B		TOTALS		VOLTS: 120/240V, 1φ, 3W
VOLTS		4846		4986		9832		
MAINS:		150 AMP MAIN BREAKER		POLES: 18 POSITIONS		MOUNTING: INSIDE PEDESTAL/ENCLOSURE		

PANEL NO: SP2 (SWITCHED PORTION OF PANEL)							10,000 AIC	
VA	FUNCTION	SIZE	CKT	PH	CKT	SIZE	FUNCTION	VA
338	STREET LIGHTS - WEST SIDE LINCOLN TO L	20A/2P	19	A	20	20A/2P	STREET LIGHTS - EAST SIDE LINCOLN TO L	338
338			21	B	22	20A/2P		338
757	STREET LIGHTS - WEST SIDE UNION TO LINCOLN	20A/2P	23	A	24	20A/2P	STREET LIGHTS - EAST SIDE UNION TO LINCOLN	813
757			25	B	26	20A/2P		813
425	STREET LIGHTS - WEST SIDE H TO UNION	20A/2P	27	A	28	20A/2P	STREET LIGHTS - EAST SIDE H TO UNION	425
425			29	B	30	20A/2P		425
360	RECEPTACLES - W	20A/1P	31	A	32	20A/1P	RECEPTACLES - E	360
900	RECEPTACLES - W	20A/1P	33	B	34	20A/1P	RECEPTACLES - E	720
540	RECEPTACLES - W	20A/1P	35	A	36	20A/1P	RECEPTACLES - E	540
0	SPARE	20A/1P	37	B	38	20A/1P	SPARE	0
0	SPARE	20A/2P	39	A	40	20A/2P	SPARE	0
0			41	B	42			0
	SPACE		43	A	44		SPACE	
	SPACE		45	B	46		SPACE	
	SPACE		47	A	48		SPACE	
PHASE		A		B		TOTALS		VOLTS: 120/240V, 1φ, 3W
VOLTS		4896		4716		9612		
MAINS:		150 AMP MAIN BREAKER		POLES: 30 POSITIONS		MOUNTING: INSIDE PEDESTAL/ENCLOSURE		



PANEL SP2 WIRING DIAGRAM

NO SCALE
REFER TO STREETSCAPE LIGHTING PLANS FOR ALL BRANCH CIRCUIT SIZES.
HANDHOLE SPECIAL NOT INDICATED ON WIRING DIAGRAM FOR CLARITY.



ELECTRIC SERVICE INSTALLATION

NO SCALE

STA 123+85 47' LT

2/20/2013

208 East Main Street, Suite 100
Belleville, Illinois 62220
618.233.5977 phone
618.233.5977 fax
www.kaskaskiaeng.com

Kaskaskia
Engineering Group, LLC

PROFESSIONAL REGISTRATIONS
Illinois Professional Design Firm
Professional Engineering Group

LICENSE NO. 184.004773
20-50801586

PREPARED BY:

BRIC
PARTNERSHIP, LLC

CONSULTING ENGINEERS
109 EAST WASHINGTON, SUITE 220
BELLEVILLE, IL 62220
TEL: 618.277.5200
FAX: 618.277.5227

ELECTRICAL SCHEDULES AND DETAILS

PROJECT TITLE: SEC 10-00085-01-LS

NORTH MAIN STREET STREETSCAPE
CITY OF EDWARDSVILLE, ILLINOIS

DESIGNED BY: JEN

DRAWN BY: JEN

CHECKED BY: RJD

DATE OF PRE-FINAL: 8/17/12

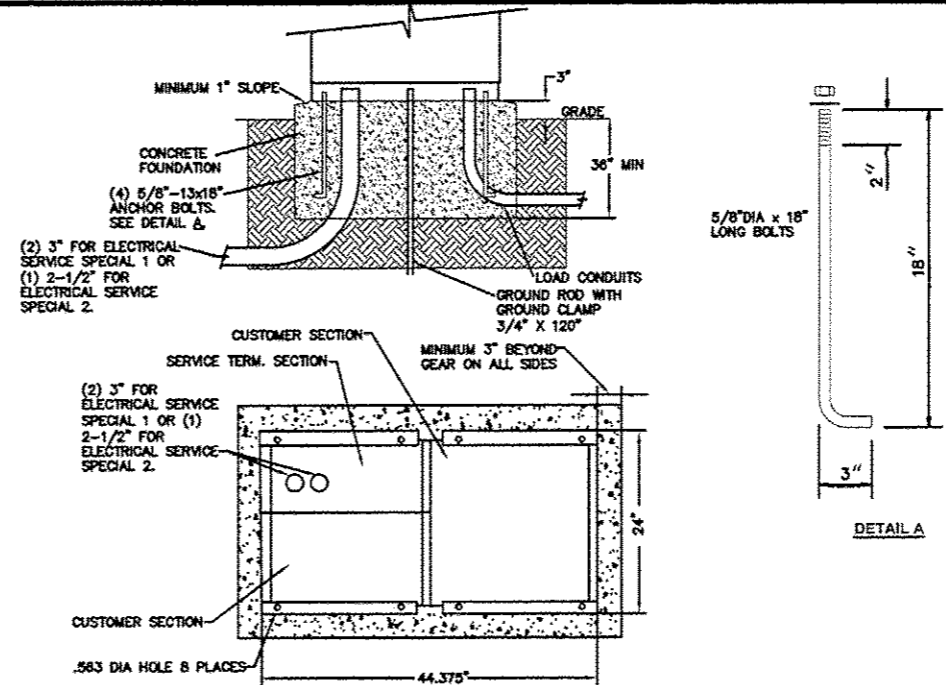
DATE OF FINAL: 10/12/12

PROJECT NUMBER: 09-1074.01

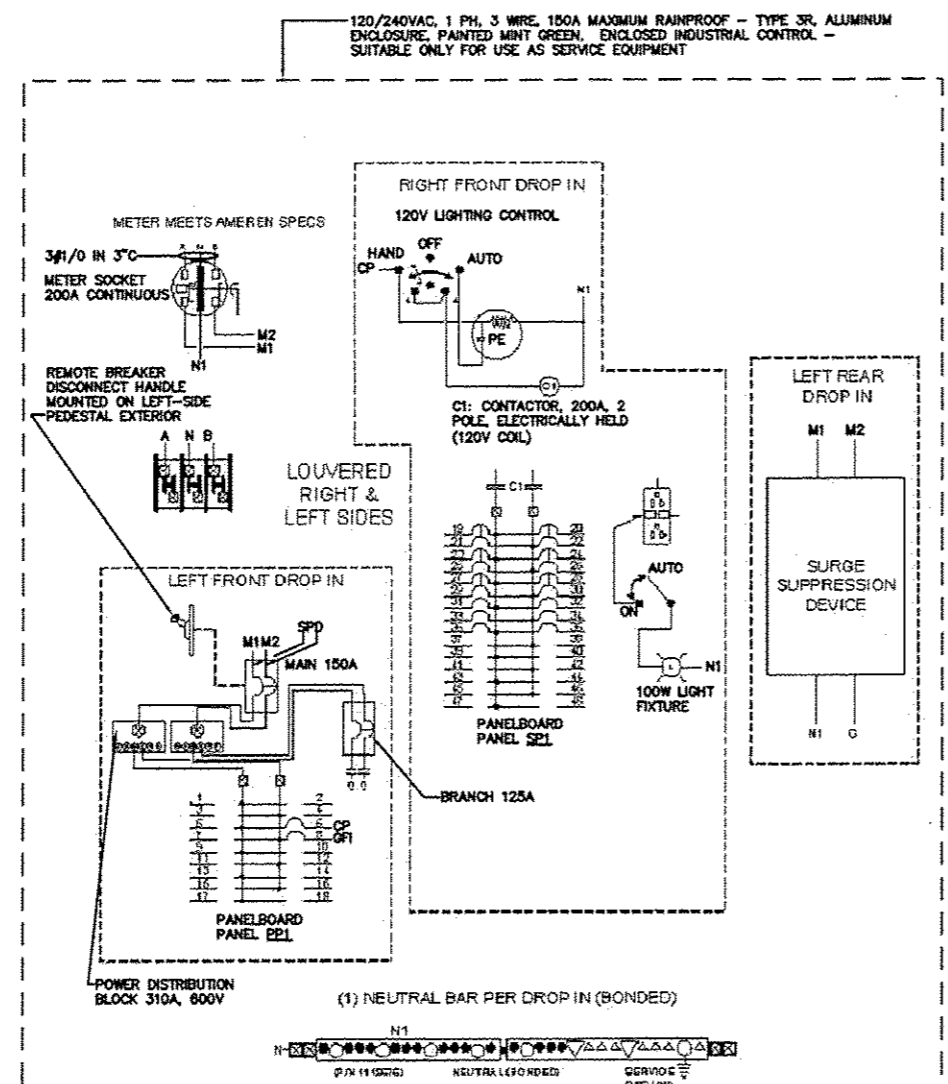
SECRET NO. 12 OF 12 SHEETS

E6

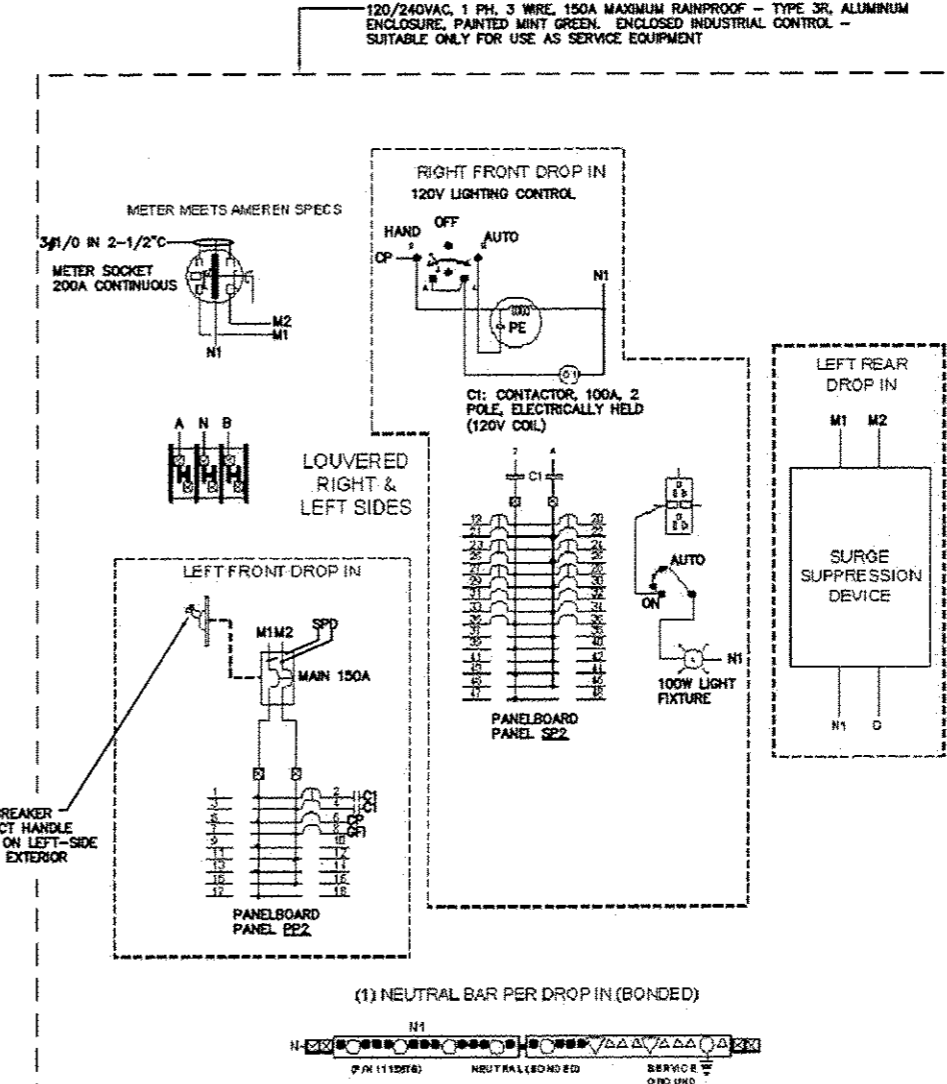
FILE: M:\2014-08\CON\DWG\STEP E Sheet Revisions 1-9-13 REV 2-14-13 FINAL.dwg



PEDESTAL/ENCLOSURE BASE DETAIL
NO SCALE



ELECTRIC SERVICE INSTALLATION, SPECIAL WIRING DIAGRAM
NO SCALE
STA 107+56 83' LT



ELECTRIC SERVICE INSTALLATION WIRING DIAGRAM
NO SCALE
STA 123+95 47' LT

PREPARED BY:
Kaskaskia Engineering Group, LLC
PROFESSIONAL REGISTRATIONS
Illinois Professional Design Firm
Professional Engineering Group

208 East Main Street, Suite 100
Belleville, Illinois 62220
618.233.5877 Phone
618.233.5977 Fax
www.kaskaskiang.com

LICENSE NO. 184-004773
20-5080586

BRIC
PARTNERSHIP, LLC
CONSULTING ENGINEERS
100 EAST WASHINGTON, SUITE 220
BELLEVILLE, IL 62220
TEL. 618.277.5200
FAX 618.277.5227

ELECTRICAL DETAILS
PROJECT TITLE:
SEC 10-00085-01-LS
NORTH MAIN STREET STREETSCAPE
CITY OF EDWARDSVILLE, ILLINOIS

DESIGNED BY:	JEN	SCALE
DRAWN BY:	JEN	
CHECKED BY:	RJD	
DATE OF PRE-FINAL:	8/17/12	E 6.1
DATE OF FINAL:	10/12/12	
SHEET NO. 154 OF 15 SHEETS		
PROJECT NUMBER:	02-1024-01	

FILE: M:\084-08\084-08\Drawings\Sheet_Revisions\1-9-13_REV 2-14-13_FINAL.dwg

LUMINAIRE SCHEDULE

STATION (TO CENTER OF STRUCT.)	OFFSET	LIGHT POLE FDN 30" DIA SPL (FOOT)	DECORATIVE LIGHT TYPE A (EACH)	HANDHOLE SPECIAL (EACH)	DECORATIVE LIGHT TYPE B (EACH)	REMOVE EXISTING LIGHT FIXTURE (EACH)
98+81	37' RT	7			1	1
100+32	44' RT	7		EX	1	
100+81	43' RT		1	EX		
101+46	35' RT		1	EX		
101+96	29' RT		1	EX		
102+42	27' RT		1	EX		
103+04	26' RT	7		EX	1	
103+35	25' RT		1	EX		
104+10	26' RT		1	EX		
104+85	26' RT		1	EX		
100+23	23' LT	7			1	
100+59	23' LT		1	1		
101+19	23' LT		1	1		
101+89	23' LT		1	1		
102+40	24' LT		1	1		
102+87	25' LT	7			1	
103+35	23' LT		1	1		
104+06	23' LT		1	1		
105+09	26' LT	7			1	
105+44	26' RT	7		EX	1	
106+46	23' RT		1	EX		
107+21	26' RT		1	EX		
108+09	26' RT		1	EX		
108+74	23' RT		1	EX		
109+54	26' RT		1	EX		
105+55	24' LT		1	1		
106+40	24' LT		1	1		
107+50	26' LT	7			1	
108+08	23' LT		1	1		
108+77	24' LT		1	1		
109+42	23' LT		1	1		
110+04	24' LT		1	1		
110+29	26' RT		1	EX		
110+92	26' RT		1	EX		
111+60	26' RT		1	EX		
112+15	25' RT		1	EX		
112+74	26' RT	7		EX	1	
113+15	26' RT		1	EX		
113+90	26' RT		1	EX		
114+56	26' RT		1	EX		
110+52	22' LT		1	1		
111+37	24' LT		1	1		
111+87	24' LT		1	1		
112+20	24' LT		1	1		
112+81	24' LT	7		1	1	
113+56	24' LT		1	1		
114+31	24' LT		1	1		
114+73	24' LT	7		1	1	
115+15	26' RT	7		EX	1	
115+52	26' RT		1	EX		
116+10	26' RT		1	EX		
116+88	26' RT		1	EX		
115+28	24' LT		1	1		
116+15	24' LT		1	1		
116+87	24' LT		1	1		
117+06	24' LT	7		1	1	
117+77	26' RT	7		EX	1	
118+57	24' RT		1	EX		
119+33	24' RT		1	EX		
120+29	26' RT	7		EX	1	
121+19	24' RT		1	EX		
121+89	24' RT		1	EX		
122+24	23' RT	7		EX	1	
117+92	24' LT		1	1		
118+64	23' LT		1	1		
119+34	23' LT		1	1		
119+85	24' LT	7		1	1	
120+51	23' LT		1	1		
121+20	24' LT		1	1		
122+04	26' LT	7			1	
122+80	23' RT		1	EX		
123+38	23' RT		1	EX		
124+12	23' RT	7		EX	1	
122+81	24' LT		1	1		

LUMINAIRE SCHEDULE

STATION (TO CENTER OF STRUCT.)	OFFSET	LIGHT POLE FDN 30" DIA SPL (FOOT)	DECORATIVE LIGHT TYPE A (EACH)	HANDHOLE SPECIAL (EACH)	DECORATIVE LIGHT TYPE B (EACH)	REMOVE EXISTING LIGHT FIXTURE (EACH)
123+38	24' LT		1		1	
123+94	27' LT	7		1	1	
TOTALS		140	56	38	20	1

ELECTRICAL SERVICE SCHEDULE

STATION (TO CENTER OF STRUCT.)	OFFSET	ELECT SERV INSTALL SP (EACH)	ELECT SERV INSTALL (EACH)
107+56	83' LT	1	
123+95	47' LT		1
TOTALS		1	1

SUMMARY OF RACEWAY AND CONDUCTORS

LOCATION		CONDUCTORS (FEET)						CONDUIT (FEET)
FROM	TO	#2	#4	#6	#8	#10	2"	
100+32	100+81					102	51	EX
44' RT	43' RT							
100+81	101+46	212				318		EX
43' RT	35' RT							
101+46	101+96	132				198		EX
35' RT	28' RT							
101+96	102+42	132				198		EX
29' RT	27' RT							
102+42	103+04	172				258		EX
27' RT	28' RT							
103+04	103+35	82				123		EX
26' RT	25' RT							
103+35	104+10	182				273		EX
25' RT	26' RT							
104+10	104+85	182				273		EX
26' RT	26' RT							
104+85	105+44	172		172	86			EX
26' RT	28' RT							
105+44	106+46	222		222	333			EX
26' RT	23' RT							
106+46	107+21	182		182	273	182		EX
23' RT	26' RT							
107+21	107+56	328		326	489	328	125	
26' RT	83' LT							
100+23	100+59			92	46		40	
23' LT	23' LT							
100+59	101+19	152				228		70
23' LT	23' LT							
101+19	101+89	132				198		60
23' LT	23' LT							
101+89	102+40	172				258		80
23' LT	24' LT							
102+40	102+87	102				153		45
24' LT	25' LT							
102+87	103+35	182				243		75
25' LT	23' LT							
103+35	104+06	182				288		90
23' LT	23' LT							
104+06	105+09	232				232	110	
23' LT	26' LT							
105+09	105+55	122				122	61	55
26' LT	24' LT							
105+55	106+40	222				222	111	444
24' LT	24' LT							
106+40	107+50	252				252	126	504
24' LT	26' LT							
107+50	107+56	172				172	86	344
26' LT	83' LT							
107+56	108+09	322				805	322	155
83' LT	26' RT							
108+09	108+74	182				405	182	EX
26' RT	23' RT							
108+74	109+54	182				455	182	EX
23' RT	26' RT							
109+54	110+29	212				318		EX
26' RT	26' RT							
110+29	110+92	132				198		EX
26' RT	26' RT							
110+92	111+60	172				258		EX
26' RT	26' RT							
111+60	112+15	142				213		EX
26' RT	25' RT							
112+15	112+74	172				258		EX
25' RT	26' RT							
112+74	113+15	102				153		EX
26' RT	26' RT							
113+15	113+90	172				258		EX
26' RT	26' RT							
113+90	114+56	172				258		EX
26' RT	26' RT							
114+56	115+15	122				122	61	55
26' RT	26' RT							
115+15	115+52	222				222	111	444
26' RT	24' LT							
115+52	116+10	252				252	126	504
24' LT	26' LT							
116+10	116+88	172				172	86	344
26' LT	26' RT							
116+88	117+06	322				805	322	155
26' RT	24' LT							
117+06	117+77	182				405	182	EX
24' LT	26' RT							
117+77	118+57	182				455	182	EX
26' RT	24' RT							
118+57	119+33	282				917		EX
24' RT	26' RT							
119+33	120+29	192				672		EX
26' RT	24' RT							
120+29	121+19	172				172	430	EX
26' RT	24' RT							
121+19	121+89	102				102	255	EX
24' RT	23' RT							
121+89	122+24	482				482	1230	240
24' RT	23' RT							
122+24	123+38							
23' RT	47' LT							
123+38	124+12							
23' RT	23' RT							
124+12	125+00							
23' RT	23' RT							
125+00	126+00							
23' RT	23' RT							

SUMMARY OF RACEWAY AND CONDUCTORS

LOCATION		CONDUCTORS (FEET)						CONDUIT (FEET)
FROM	TO	#2	#4	#6	#8	#10	2"	
107+56	108+08	232	232	348	232	110		
83' LT	23' LT							
108+08	108+77	172	172	86	344	80		
23' LT	24' LT							
108+77	109+42	182	182	81	324	75		
23' LT	23' LT							
109+42	110+04	162	162	81	324	75		
23' LT	24' LT							
110+04	110+82	132	132	86		60		
24' LT	22' LT							
110+82	111+37	202		303		95		
22' LT	24' LT							
111+37	111+87	132		198		60		
24' LT	24' LT							
111+87	112+20	122		183		55		
24' LT	24' LT							
112+20	112+81	142		213		65		
24' LT	24' LT							
112+81	113+56	182		273		85		
24' LT	24' LT							
113+56	114+31	182		273		85		
24' LT	24' LT							
114+31	114+73			122	81	55		
24' LT	24' LT							
114+73	115+15			92				