

INDEX OF SHEETS

1. COVER SHEET, LOCATION MAP, SCHEDULE OF QUANTITIES
2. GENERAL NOTES, TYPICAL EXISTING AND PROPOSED CROSS-SECTIONS, SUMMARY OF QUANTITIES, BITUMINOUS MIXTURE BREAKDOWN, STRIPING DETAILS, SIDE ROADS, PRIVATE ENTRANCES AND MAILBOX TURNOUTS

STANDARDS

- 000001-06
- 701006-04
- 701306-03
- 701311-03
- 701901-02
- 780001-03
- BLR 21-9
- BLR 22-7

SCHEDULE OF QUANTITIES			
Code Number	Item	Unit of Measure	Quantity
XX003140	SHORT-TERM PAVMENT MARKING REMOVAL	FOOT	1,988
40200800	AGGREGATE SURFACE COURSE, TYPE B	TON	135
40600100	BITUMINOUS MATERIAL (PRIME COAT)	GALLON	2,220
40600625	LEVELING BINDER (MACHINE METHOD), N50	TON	1,219
40603310	HOT MIX ASPHALT SURFACE COURSE, MIX, "C", N50	TON	2,398
48101200	AGGREGATE SHOULDERS, TYPE B	TON	646
67100100	MOBILIZATION	LSUM	1
70100460	TRAFFIC CONTROL AND PROTECTION, STANDARD 701306	LSUM	1
70300100	SHORT TERM PAVEMENT MARKING	FOOT	1,988
78000200	THERMOPLASTIC PAVEMENT MARKING LINE, 4"	FOOT	22,923

△ SPECIALTY ITEMS

TOTAL SECTION LENGTH = 9,939' = 1.88 MILES
OMISSION = 0'

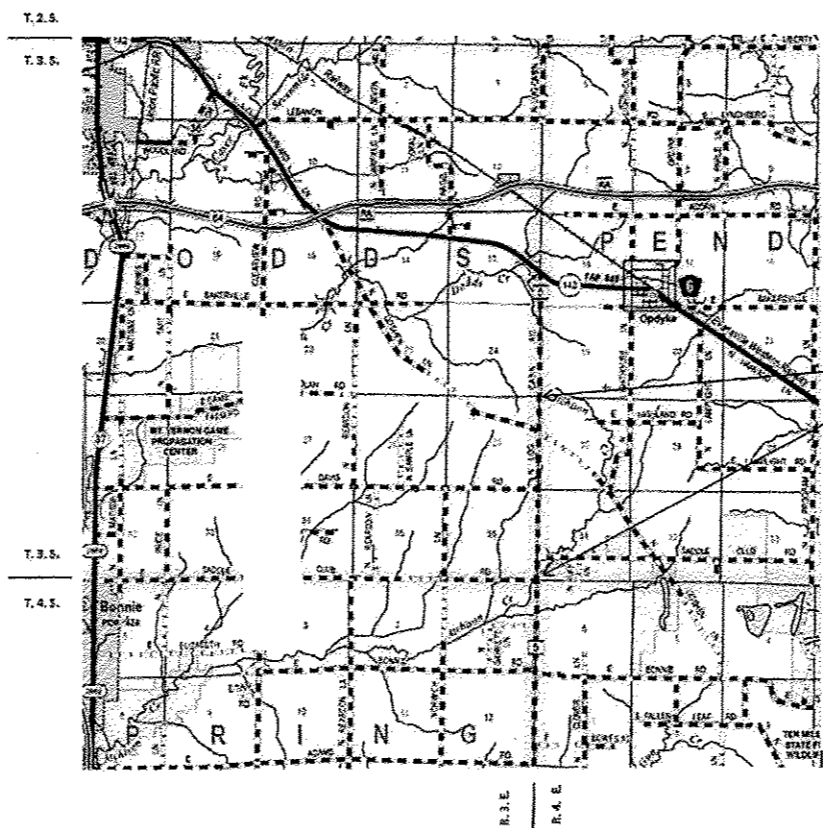
CONTRACT 99492

STATE OF ILLINOIS
DEPARTMENT OF TRANSPORTATION
DIVISION OF HIGHWAYS
PLANS FOR PROPOSED
FEDERAL AID SECONDARY PROJECT

FAS 823 CH 5
SECTION 09-00203-00-RS
JEFFERSON COUNTY
PROJECT # RS-0081(065)
JOB # C-99-528-10

ROUTE	SECTION	COUNTY	TOT SHTS.	SHEET
FAS 823	09-00203-00-RS	JEFFERSON	2	1

JEFFERSON COUNTY ROAD DISTRICT



SECTION 09-00203-00-RS
BEGINS 72+00
ENDS 171+39

FUNCTIONAL CLASSIFICATION: MAJOR COLLECTOR
DESIGN SPEED: 55 MPH

APPROVED
12-13 2012
[Signature]
COUNTY ENGINEER
JEFFERSON COUNTY HIGHWAY DEPT.
750 OLD FAIRFIELD ROAD
MT. VERNON, IL 62864
PH (618)246-0091
LICENCE EXP. 11-30-2013

LICENSED PROFESSIONAL ENGINEER
BRANDON J SIMMONS
062.063443
STATE OF ILLINOIS

PASSED
12/31 2012
[Signature]
DISTRICT NINE ENGINEER OF
LOCAL ROADS AND STREETS

RELEASING FOR
BID BASED ON
LIMITED REVIEW 12/31 2012
[Signature]
OMER OSMAN, P.E.
DEPUTY DIRECTOR OF HIGHWAYS
REGION 5 ENGINEER
STATE OF ILLINOIS
DEPARTMENT OF TRANSPORTATION