

INDEX OF SHEETS

1. COVER SHEET, LOCATION MAP, SCHEDULE OF QUANTITIES
2. GENERAL NOTES, TYPICAL EXISTING AND PROPOSED CROSS-SECTIONS, SUMMARY OF QUANTITIES, BITUMINOUS MIXTURE BREAKDOWN, STRIPING DETAILS, SIDE ROADS, PRIVATE ENTRANCES AND MAILBOX TURNOUTS

STANDARDS

- 000001-06
- 701006-04
- 701306-03
- 701311-03
- 701901-02
- 780001-03
- BLR 21-9
- BLR 22-7

SCHEDULE OF QUANTITIES			
Code Number	Item	Unit of Measure	Quantity
XX003140	SHORT-TERM PAVMENT MARKING REMOVAL	FOOT	1,988
40200800	AGGREGATE SURFACE COURSE, TYPE B	TON	135
40600100	BITUMINOUS MATERIAL (PRIME COAT)	GALLON	2,220
40600625	LEVELING BINDER (MACHINE METHOD), N50	TON	1,219
40603310	HOT MIX ASPHALT SURFACE COURSE, MIX, "C", N50	TON	2,398
48101200	AGGREGATE SHOULDERS, TYPE B	TON	646
67100100	MOBILIZATION	LSUM	1
70100460	TRAFFIC CONTROL AND PROTECTION, STANDARD 701306	LSUM	1
70300100	SHORT TERM PAVEMENT MARKING	FOOT	1,988
78000200	THERMOPLASTIC PAVEMENT MARKING LINE, 4"	FOOT	22,923

△ SPECIALTY ITEMS

TOTAL SECTION LENGTH = 9,939' = 1.88 MILES
 OMISSION = 0'

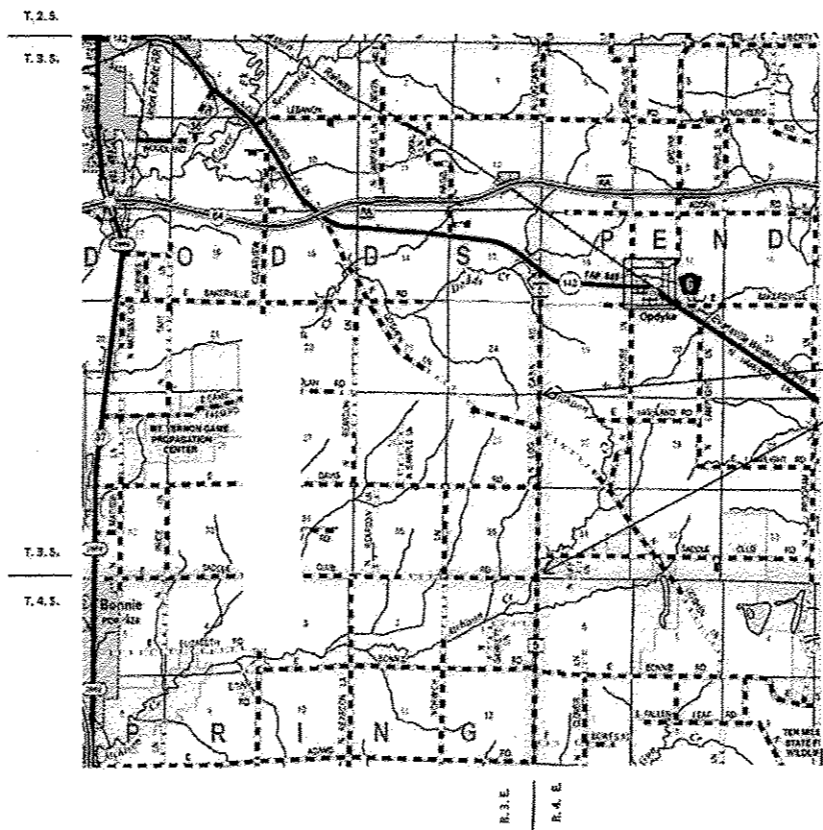
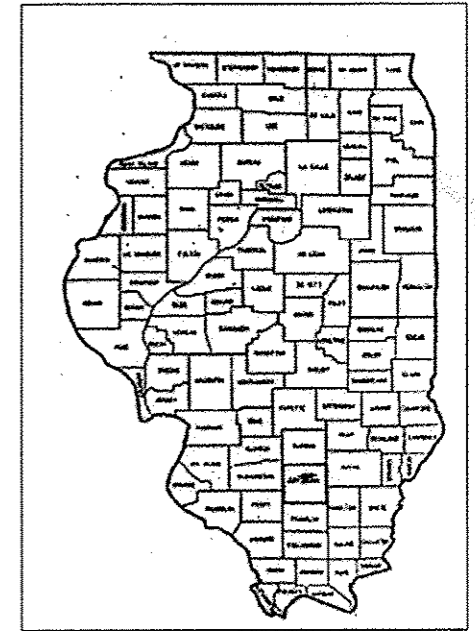
CONTRACT 99492

STATE OF ILLINOIS
 DEPARTMENT OF TRANSPORTATION
 DIVISION OF HIGHWAYS
 PLANS FOR PROPOSED
 FEDERAL AID SECONDARY PROJECT

FAS 823 CH 5
 SECTION 09-00203-00-RS
 JEFFERSON COUNTY
 PROJECT # RS-0081(065)
 JOB # C-99-528-10

ROUTE	SECTION	COUNTY	TOT SHTS.	SHEET
FAS 823	09-00203-00-RS	JEFFERSON	2	1

JEFFERSON COUNTY ROAD DISTRICT



SECTION 09-00203-00-RS
 BEGINS 72+00
 ENDS 171+39

FUNCTIONAL CLASSIFICATION: MAJOR COLLECTOR
 DESIGN SPEED: 55 MPH

APPROVED
 12-13 2012
[Signature]
 COUNTY ENGINEER
 JEFFERSON COUNTY HIGHWAY DEPT.
 750 OLD FAIRFIELD ROAD
 MT. VERNON, IL 62864
 PH (618)246-0091
 LICENCE EXP. 11-30-2013

PASSED
 12/31 2012
[Signature]
 DISTRICT NINE ENGINEER OF
 LOCAL ROADS AND STREETS

RELEASING FOR
 BID BASED ON
 LIMITED REVIEW 12/31 2012
[Signature]
 OMER OSMAN, P.E.
 DEPUTY DIRECTOR OF HIGHWAYS
 REGION 5 ENGINEER
 STATE OF ILLINOIS
 DEPARTMENT OF TRANSPORTATION

STRIPING SCHEDULE			
NO PASSING ZONES		CENTERLINE	EDGELINE
NORTHBOUND	SOUTHBOUND		
166+93 TO 172+54	NONE	72+00 TO 171+39	72+00 TO 171+39 PLACE EDGELINE 4" FROM EDGE OF SURFACE AND OMIT SIDEROADS
561'	0'	2,484'	19,878'
TOTAL 22,923'			

HOT MIX SURFACE AND LEVELING BINDER	
MATERIAL PURPOSE	TONS
RESURFACING	3,441.7
SIDEROADS, INTERSECTIONS, P.E., AND F.E.	175
TOTAL	3,616
CONVERSION FACTOR = 112 LBS/SY/INCH	

ROUTE	SECTION	COUNTY	TOT SHTS.	SHEET
FAS 823	09-00203-00-RS	JEFFERSON	2	2
JEFFERSON COUNTY ROAD DISTRICT				

GENERAL NOTES

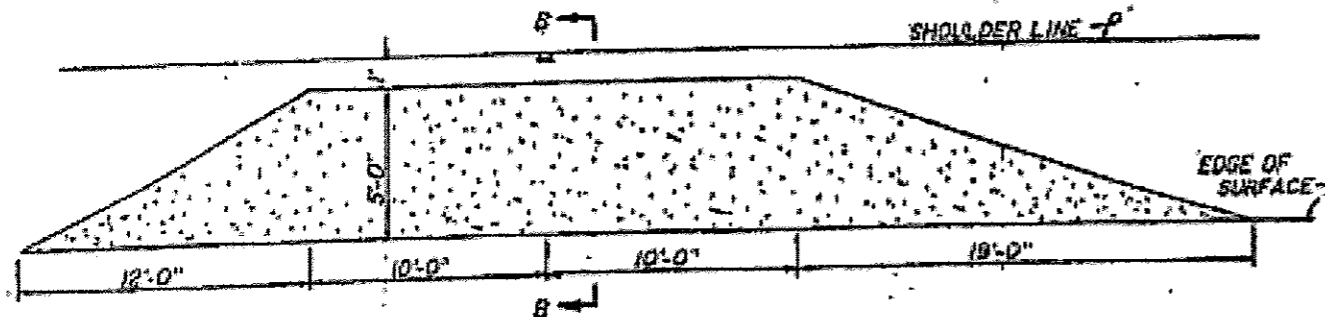
THIS SECTION SHALL CONSIST OF HOT-MIX ASPHALT SURFACE COURSE MIS "C" N50 WITH AGGREGATE SHOULDERS, STRIPING, RESURFACING OF DRIVES, FIELD ENTRANCES, ROAD INTERSECTIONS AND MAILBOX TURNOUTS. ALL WORK SHALL BE IN ACCORDANCE WITH THE PLANS, SPECIAL PROVISIONS, THE STANDARD SPECIFICATIONS FOR ROAD AND BRIDGE CONSTRUCTION ADOPTED JANUARY 1, 2012 BY THE ILLINOIS DEPARTMENT OF TRANSPORTATION AND RECURRING SPECIAL PROVISIONS.

THE EXISTING GRADE, ALIGNMENT, DRAINAGE STRUCTURES AND BASE COURSE WERE CONSTRUCTED UNDER 13-MFT.

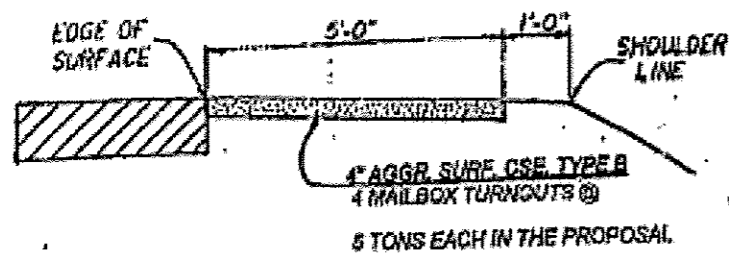
STATION	ADT	PV	SU	MU
72+00 TO 171+93	850	840	10	--

MAXIMUM GRADE 2.5%
 MINIMUM SIGHT DISTANCE > 400'
 YEAR OF IMPROVEMENT 2013
 DESIGN SPEED 55 MPH

HOT MIX ASPHALT THICKNESS 2 1/2"
 M.S. 1500 MINIMUM
 PRIME 0.10 GAL / SY

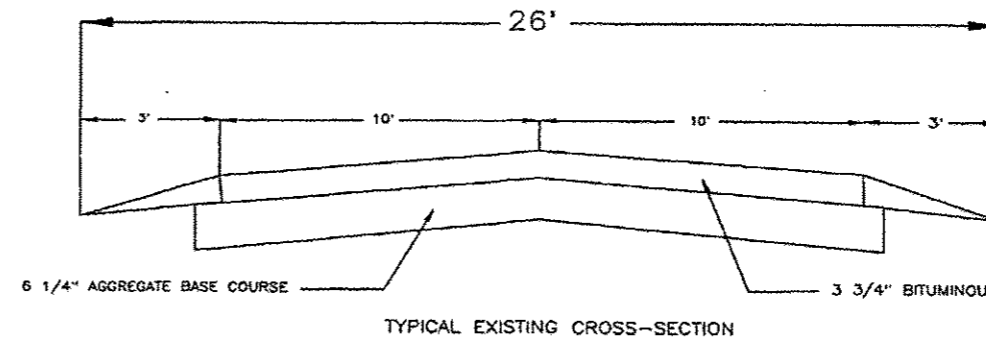


DETAIL OF MAILBOX TURNOUT

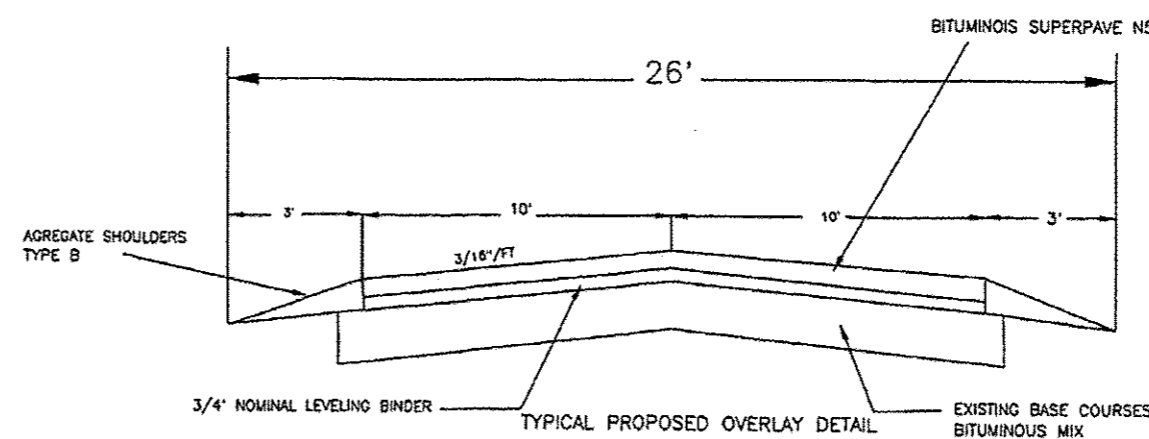


6 TONS EACH IN THE PROPOSAL

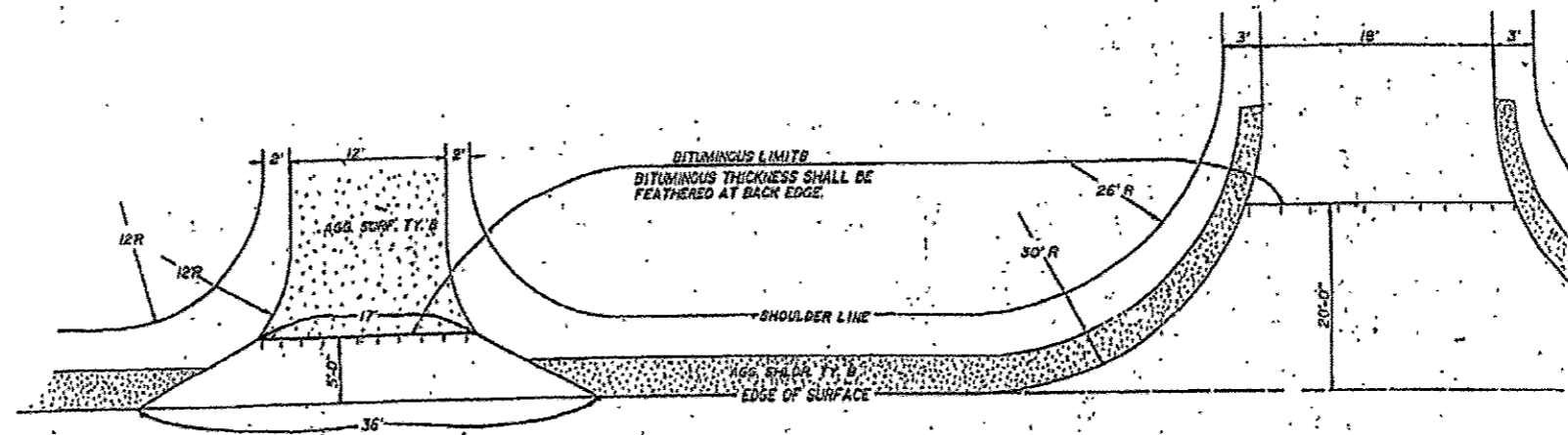
SECTION B-B



TYPICAL EXISTING CROSS-SECTION



TYPICAL PROPOSED OVERLAY DETAIL



DETAIL OF PRIVATE/FIELD ENTRANCE

6 PRIVATE/FIELD ENTRANCES WITH 6 TONS HOT-MIX ASPHALT SURFACE COURSE MIX "C" N50 EACH ALLOWED IN THE PROPOSAL

REPAIR ALL SIDEROADS AND ENTRANCES AS REQUIRED BY DIRECTION OF THE ENGINEER. 6 TONS EACH AGGREGATE SURFACE COURSE TYPE B ALLOWED IN THE PROPOSAL

DETAIL OF SIDE ROAD INTERSECTION (1 EACH)

28 TONS OF HOT-MIX ASPHALT SURFACE COURSE MIX "C" N50 ALLOWED IN THE PROPOSAL