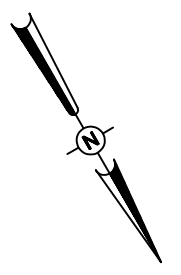
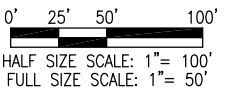
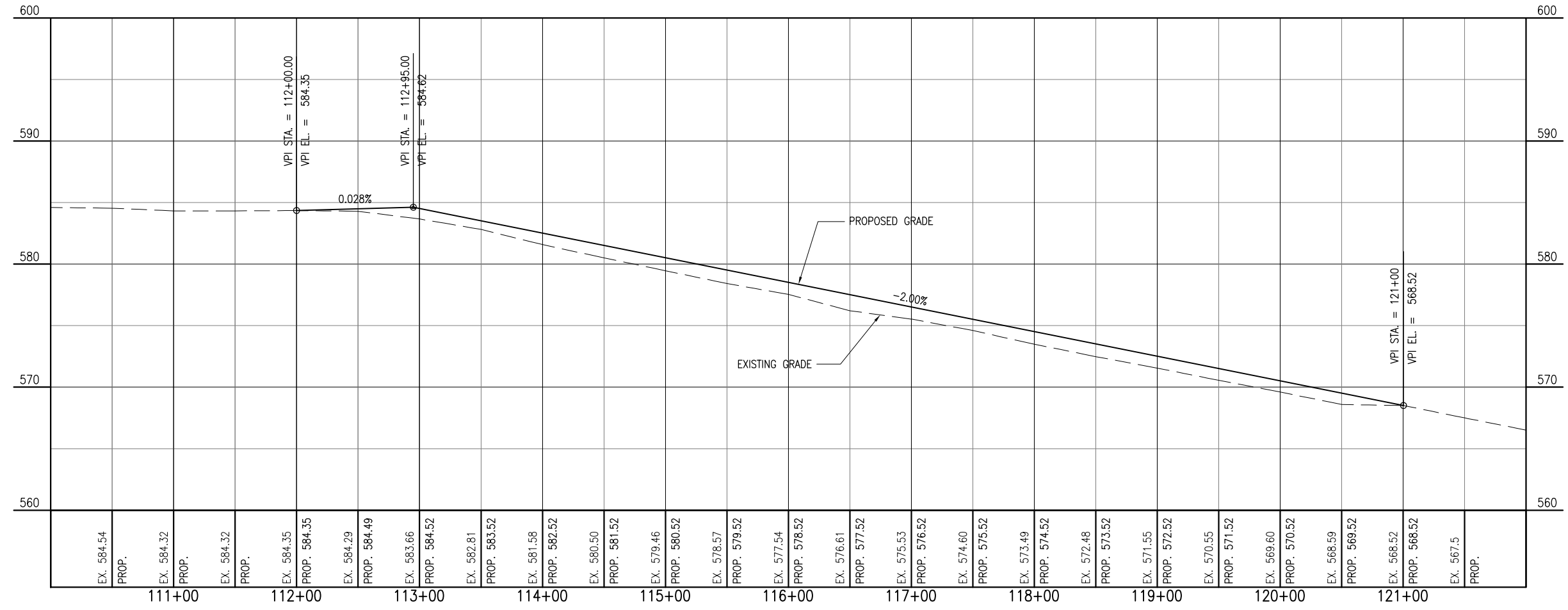


**PAVEMENT SAWING NOTES**

- THE EDGE OF THE EXISTING PAVEMENT WILL BE SAWED FULL DEPTH.
- THE PROPOSED SAWING WILL REMOVE THE ROLLED DOWN EDGE AND PROVIDE A STRAIGHT PAVEMENT EDGE TO BUTT AGAINST.
- THE RESIDENT ENGINEER WILL MARK THE PROPOSED SAW LINE IN THE FIELD.
- ANY BITUMINOUS PAVEMENT CUT FROM THE SAWING OPERATIONS WILL BE COLLECTED AND DISPOSED OF OFF THE AIRPORT SITE.
- THE SAWING AND DISPOSAL OF ANY WASTE MATERIAL WILL BE CONSIDERED INCIDENTAL TO THE CONTRACT AND NO ADDITIONAL COMPENSATION WILL BE ALLOWED

**LEGEND**

- EXISTING PAVEMENT
- PROPOSED PAVEMENT
- FUTURE PAVEMENT
- PROPOSED PARTIAL PARALLEL TAXIWAY "BY OTHERS"



JAN 10, 2013 2:45 PM KINC00394  
E:\AIRPORTS\MARSHALL\10A0051\AIRPORT\SHEETS\R-701PNP-REV.DWG

REVISION	DATE

MARSHALL COUNTY AIRPORT  
LACON, ILLINOIS  
BLOCK GRANT PROJ.: 3-17-0059-B15  
IL PROJ.: C75-4223

Hanson Proj. No. 10A0051	Filename R-701PNP-REV.DWG
Scale 1"=50'	Date 12/14/12
LAYOUT MDR 03/01/11	DRAWN MDR 03/01/11
REVIEWED CAH 03/30/11	

**HANSON**  
Professional Services Inc. 2013  
1525 South Sixth Street  
Springfield, Illinois 62703-2986  
Ph: (217) 788-2450 Fax: (217) 788-2503  
www.hanson-inc.com  
Offices Nationwide

**PAVE, LIGHT AND MARK  
805' EXTENSION**  
PROPOSED PLAN AND  
PROFILE STA. 110+00 TO  
STA. 122+00