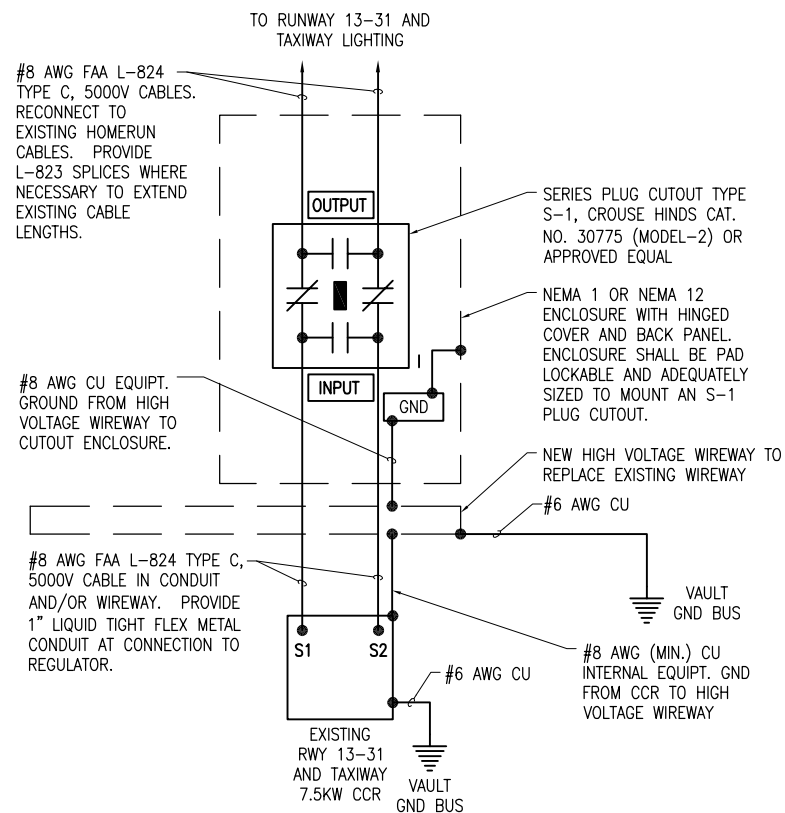
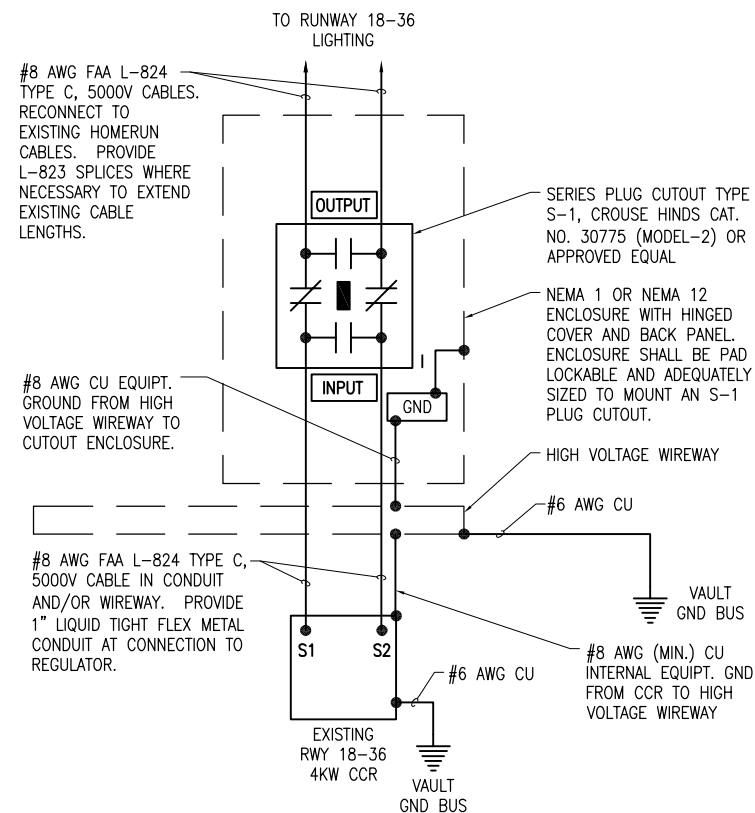


NOTES

1. PROVIDE PHENOLIC ENGRAVED LEGEND PLATES FOR EACH CONSTANT CURRENT REGULATOR (EXISTING & NEW) NOTING THE RUNWAY AND/OR TAXIWAY SERVED.
2. EACH PLUG CUTOUT CABINET SHALL BE FURNISHED WITH A PHENOLIC ENGRAVED LEGEND PLATE THAT IDENTIFIES THE RESPECTIVE RUNWAY OR TAXIWAY CIRCUIT OR REGULATOR. INCLUDE AN ADDITIONAL LEGEND PLATE LABELED "CAUTION OPERATE CUTOUTS WITH CCR SHUT OFF".
3. PROVIDE PHENOLIC ENGRAVED LEGEND PLATES FOR THE CUTOUTS TO IDENTIFY THE RESPECTIVE REGULATOR OUTPUT CONNECTION AND THE RESPECTIVE CIRCUIT LOAD CONNECTION.
4. BOND REGULATOR FRAME TO VAULT GROUND BUS WITH A DEDICATED #6 AWG BONDING JUMPER.
5. PROVIDE ADEQUATE WORKING SPACE IN FRONT OF EACH CUTOUT ENCLOSURE TO MEET NEC CLEARANCE REQUIREMENTS.
6. LIQUID TIGHT FLEXIBLE METAL CONDUIT AND ASSOCIATED FITTINGS SHALL BE U.L. LISTED TO MEET THE REQUIREMENTS OF NEC 350.6, SUITABLE FOR GROUNDING AND SUNLIGHT RESISTANT. LIQUID TIGHT FLEXIBLE METAL CONDUIT THAT IS USED FOR FLEXIBILITY (INCLUDING CONNECTIONS TO CCR'S & TRANSFORMERS) SHALL REQUIRE AN EXTERNAL BONDING JUMPER OR INTERNAL EQUIPMENT GROUNDING CONDUCTOR PER NEC 350.60. EXTERNAL BONDING JUMPERS USED WITH CCR INSTALLATIONS SHALL BE #6 AWG COPPER (MINIMUM). DO NOT INSTALL LIQUID TIGHT FLEXIBLE METAL CONDUIT THAT IS NOT UL LISTED. CONFIRM LIQUID TIGHT FLEXIBLE METAL CONDUIT BEARS THE UL LABEL PRIOR TO INSTALLING IT.
7. SERIES PLUG CUTOUTS SHALL BE TYPE S-1, RATED 5000 VOLTS, 20 AMP, AND SHALL COMPLY WITH FAA AC 150/5340-4C. SERIES PLUG CUTOUT SHALL DISCONNECT THE INPUT FROM THE OUTPUT, SHORT THE INPUT TERMINALS, AND SHORT THE OUTPUT TERMINALS WHEN THE HANDLE/PLUG IS REMOVED. CUTOUTS SHALL BE SUITABLE FOR NORMAL OPERATION WITH HANDLE REMOVED OR HANDLE INSERTED. SERIES PLUG CUTOUTS SHALL BE TYPE S-1, CROUSE HINDS CAT. NO. 30775, (MODEL-2) OR APPROVED EQUAL. THE RESPECTIVE CUTOUT MANUFACTURER SHALL CERTIFY IN WRITING THAT THEIR CUTOUT IS SUITABLE AND RATED FOR THE RESPECTIVE APPLICATION. SERIES DISCONNECTS ARE REQUIRED FOR EACH CONSTANT CURRENT REGULATOR PER FAA AC 150/5340-30G, CHAPTER 3, PART 3.5 EQUIPMENT AND MATERIAL, PARAGRAPH e, REGULATORS.
8. MAINTAIN SEPARATION OF HIGH VOLTAGE AND LOW VOLTAGE CIRCUITS. HIGH VOLTAGE AND LOW VOLTAGE CIRCUITS SHALL NOT BE INSTALLED IN THE SAME WIREWAY, CONDUIT, OR RACEWAY. COORDINATE HIGH VOLTAGE WIRING ENTRIES INTO THE CCR HIGH VOLTAGE SECTION. COORDINATE LOW VOLTAGE WIRING ENTRIES INTO THE CCR LOW VOLTAGE SECTION.
9. FURNISH AND INSTALL A UL RATED 10 POUND CARBON DIOXIDE FIRE EXTINGUISHER SUITABLE FOR USE ON CLASS C FIRES IN THE VAULT. PER NFPA 10 "PORTABLE FIRE EXTINGUISHERS" CLASS C FIRES ARE FIRES THAT INVOLVE ENERGIZED ELECTRICAL EQUIPMENT. FIRE EXTINGUISHER SHALL BE AMEREX 330, OR APPROVED EQUAL. CONFIRM MODEL NUMBERS WITH THE RESPECTIVE FIRE EXTINGUISHER MANUFACTURER.

LEGEND

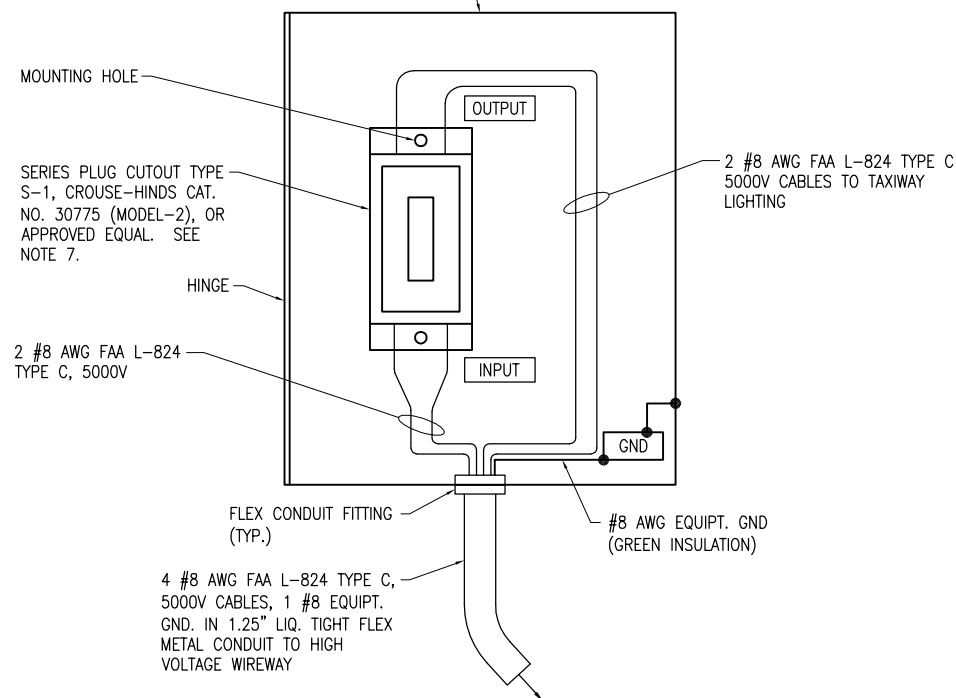
- "I" DENOTES PLUG CUTOUT WITH PLUG INSERTED
- "P" DENOTES PLUG CUTOUT WITH PLUG PULLED
- "CCR" DENOTES CONSTANT CURRENT REGULATOR



HIGH VOLTAGE WIRING SCHEMATIC

NOT TO SCALE

14"H x 12"W x 8"D (APPROXIMATE DIMENSIONS) NEMA 1 OR NEMA 12 ENCLOSURE WITH HINGED COVER & BACK PANEL. NOTE FRONT DOOR OF ENCLOSURE NOT SHOWN FOR CLARITY. ADJUST ENCLOSURE DIMENSIONS AS NECESSARY TO ACCOMMODATE THE RESPECTIVE CUTOUT.



SERIES PLUG CUTOUT MOUNTING DETAIL

NOT TO SCALE

REVISION	DATE	UPDATE PER
150/5340-30F	9/19/12	PER FAA AC
UPDATED NOTES 7 & 9	12/11/12	

MARSHALL COUNTY AIRPORT
LACON, ILLINOIS

IL PROJ.: C75-4223 BLOCK GRANT PROJ.: 3-17-0059-B15

Hanson Proj. No. 10A0051	DATE	08/26/10
Filename E-606.DWG	DRAWN	MLH
Scale NONE	REVIEWED	KNL/CAH
Date 12/14/12		03/30/11

HANSON
 © Copyright Hanson Professional Services Inc. 2013
 Hanson Professional Services Inc.
 1525 South Sixth Street
 Springfield, Illinois 62703-2886
 Ph: (217) 788-2450 Fax: (217) 788-2503
 www.hanson-inc.com
 Offices Nationwide

PAVE, LIGHT AND MARK
805' EXTENSION
HIGH VOLTAGE WIRING
SCHEMATIC