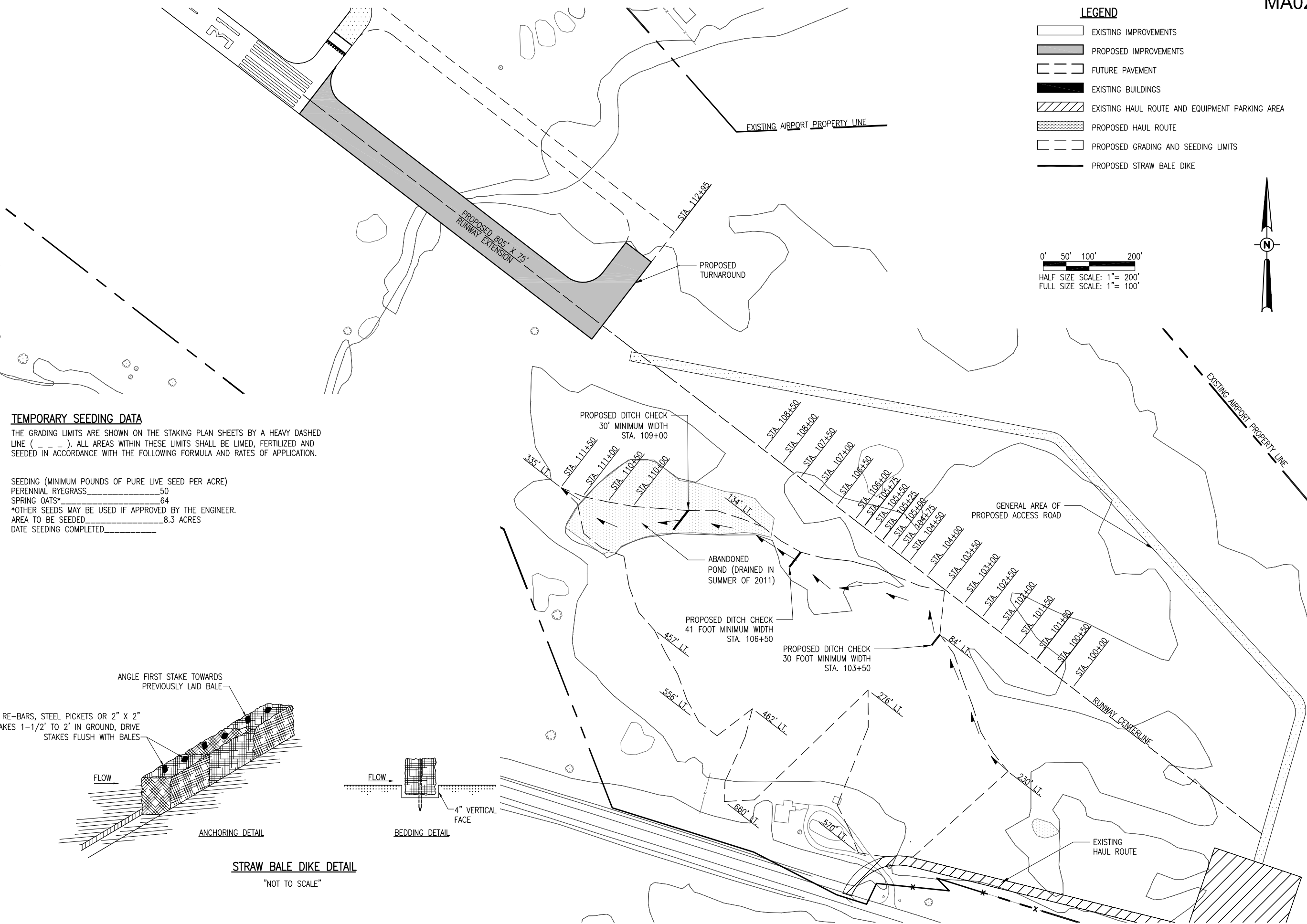
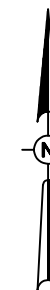


- LEGEND**
- EXISTING IMPROVEMENTS
 - PROPOSED IMPROVEMENTS
 - FUTURE PAVEMENT
 - EXISTING BUILDINGS
 - EXISTING HAUL ROUTE AND EQUIPMENT PARKING AREA
 - PROPOSED HAUL ROUTE
 - PROPOSED GRADING AND SEEDING LIMITS
 - PROPOSED STRAW BALE DIKE

0' 50' 100' 200'
 HALF SIZE SCALE: 1" = 200'
 FULL SIZE SCALE: 1" = 100'



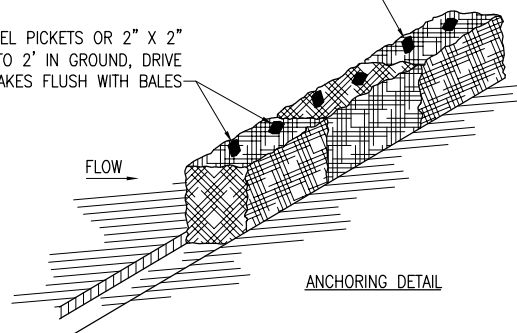
TEMPORARY SEEDING DATA

THE GRADING LIMITS ARE SHOWN ON THE STAKING PLAN SHEETS BY A HEAVY DASHED LINE (_ _ _). ALL AREAS WITHIN THESE LIMITS SHALL BE LIMED, FERTILIZED AND SEEDING IN ACCORDANCE WITH THE FOLLOWING FORMULA AND RATES OF APPLICATION.

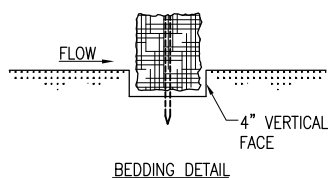
SEEDING (MINIMUM POUNDS OF PURE LIVE SEED PER ACRE)
 PERENNIAL RYEGRASS _____ 50
 SPRING OATS* _____ 64
 *OTHER SEEDS MAY BE USED IF APPROVED BY THE ENGINEER.
 AREA TO BE SEEDING _____ 8.3 ACRES
 DATE SEEDING COMPLETED _____

ANGLE FIRST STAKE TOWARDS
 PREVIOUSLY LAID BALE

2 RE-BARS, STEEL PICKETS OR 2" X 2"
 STAKES 1-1/2' TO 2' IN GROUND, DRIVE
 STAKES FLUSH WITH BALES



ANCHORING DETAIL



BEDDING DETAIL

STRAW BALE DIKE DETAIL

"NOT TO SCALE"

REVISION	DATE

MARSHALL COUNTY AIRPORT
 LACON, ILLINOIS

IL PROJ.: C75-4223 BLOCK GRANT PROJ.: 3-17-0059-B15

Hanson Proj. No. 10A00051	BAK	07/08/10
Filename R-182SMP.DWG	BAK	07/08/10
Scale 1"=100'	BAK	07/08/10
Date 12/14/12	CAH	03/30/11
LAYOUT		
DRAWN		
REVIEWED		

HANSON
 © Copyright Hanson Professional Services Inc. 2013
 Hanson Professional Services Inc.
 1525 South Sixth Street
 Springfield, Illinois 62703-2986
 Ph: (217) 788-2450 Fax: (217) 788-2503
 www.hanson-inc.com
 Offices Nationwide

APPROACH WORK TO
 RUNWAY END 31
 PROPOSED STORMWATER
 POLLUTION PREVENTION PLAN