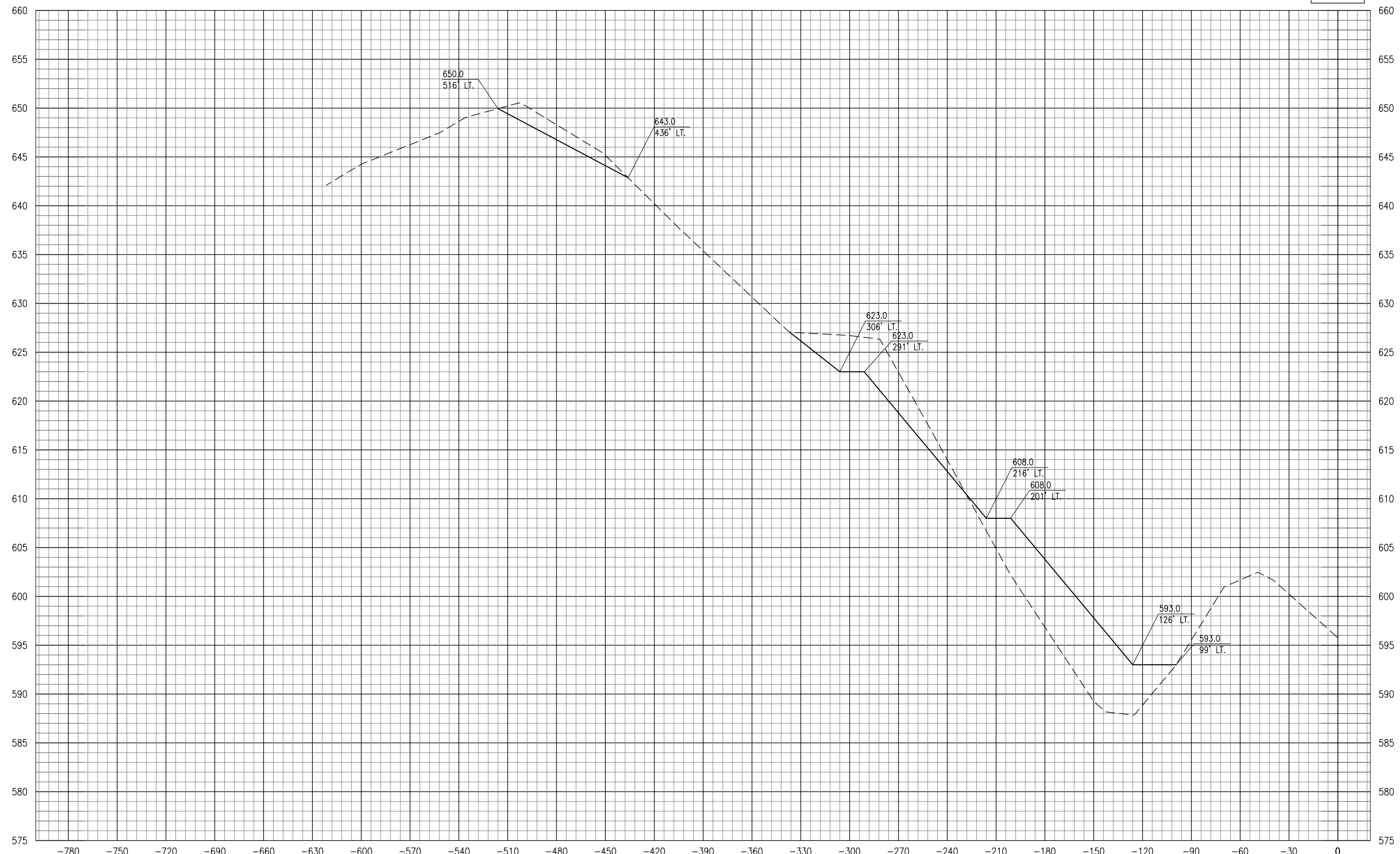


102+50



JAN 11, 2013 8:45 AM KINC00394
 E:\AIRPORTS\MARSHALL\10A0051\AIRPORT\SHEETS\SECTIONS-2012-11\SURVEY-25FT.DWG

REVISION	DATE

MARSHALL COUNTY AIRPORT
 LACON, ILLINOIS
 IL PROJ.: C75-4223 BLOCK GRANT PROJ.: 3-17-0059-B15

Hanson Proj. No. 10A0051	Filename SECTIONS-2012-11\SURVEY-25FT.DWG
Scale H. 1" = 20' V. 1" = 5'	Date 12/14/12
LAYOUT MLH 03/30/12	DRAWN DAW 03/30/12
REVIEWED JSL	


HANSON
 © Copyright Hanson Professional Services Inc. 2013
Hanson Professional Services Inc.
 1525 South Sixth Street
 Springfield, Illinois 62703-2886
 Ph: (217) 788-2450 Fax: (217) 788-2503
 www.hanson-inc.com
 Offices Nationwide

APPROACH WORK TO
 RUNWAY END 31
 CROSS-SECTIONS FOR
 APPROACH WORK
 STA. 102+50