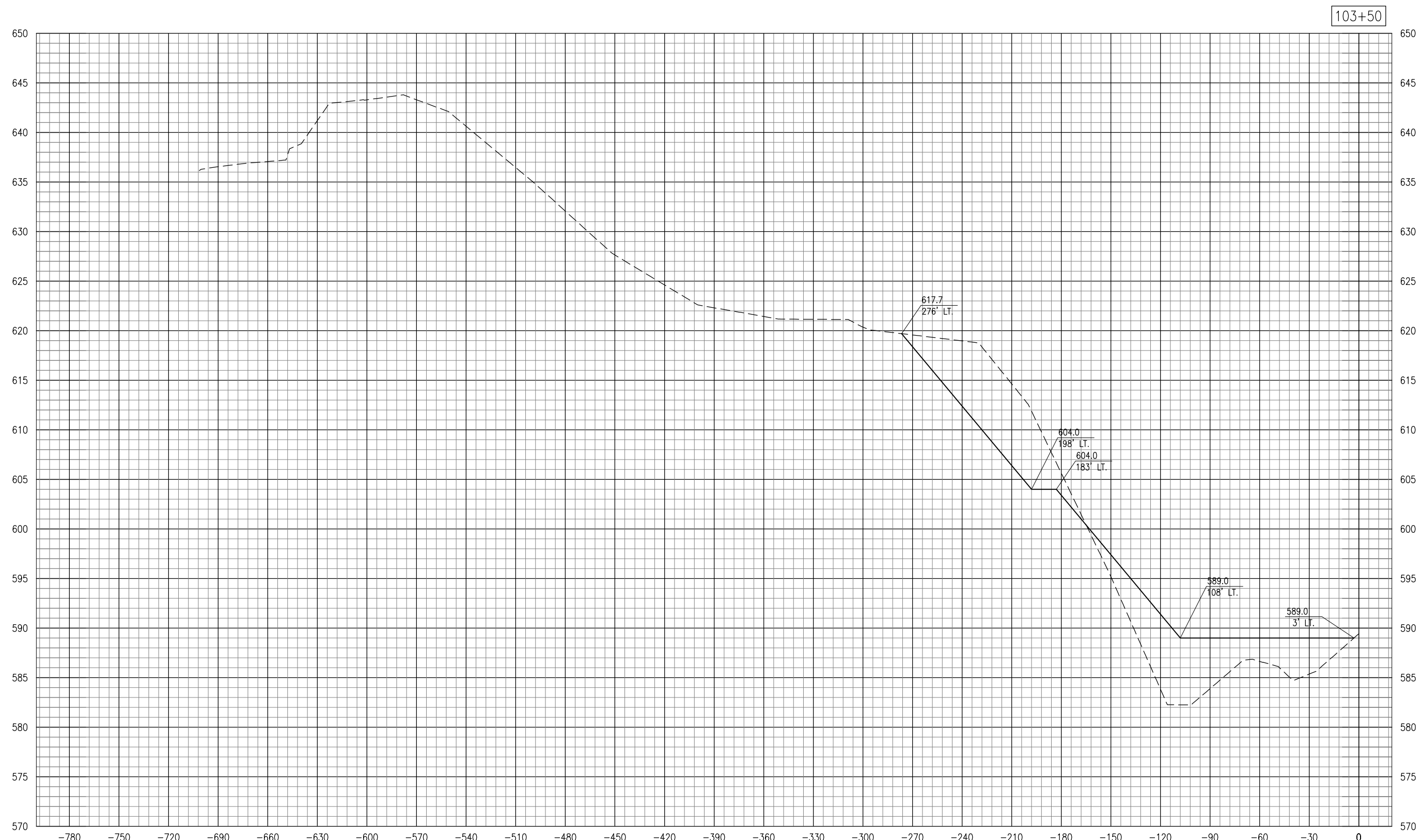


JAN 11, 2013 8:46 AM KINC00394
 E:\AIRPORTS\MARSHALL\10A0051\AIRPORT\SHEETS\SECTIONS-2012-11\SURVEY-25FT.DWG



DATE	REVISION

MARSHALL COUNTY AIRPORT
 LACON, ILLINOIS

IL PROJ.: C75-4223 BLOCK GRANT PROJ.: 3-17-0059-B15

Hanson Proj. No. 10A0051	
Filename: SECTIONS-2012-11\SURVEY-25FT.DWG	
Scale	H. 1" = 20' V. 1" = 5'
Date	12/14/12
LAYOUT	MLH 03/30/12
DRAWN	DAW 03/30/12
REVIEWED	JSL

© Copyright Hanson Professional Services Inc. 2013
Hanson Professional Services Inc.
 1525 South Sixth Street
 Springfield, Illinois 62703-2886
 Ph: (217) 788-2450 Fax: (217) 788-2503
 www.hanson-inc.com
 Offices Nationwide

APPROACH WORK TO
 RUNWAY END 31

CROSS-SECTIONS FOR
 APPROACH WORK
 STA. 103+50