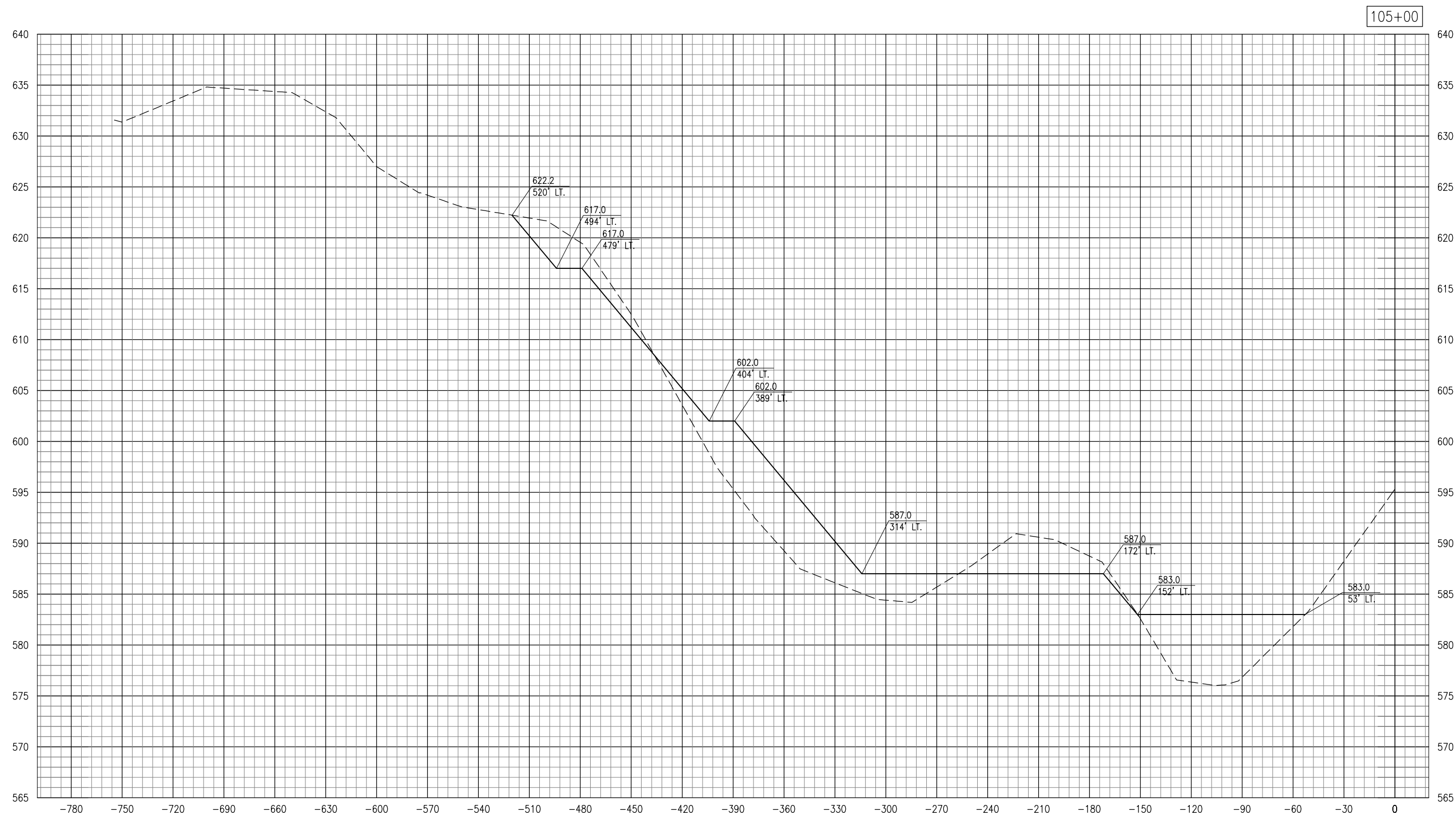


JAN 11, 2013 8:52 AM KINC00394
 E:\AIRPORTS\MARSHALL\10A005\AIRPORT\SHEETS\SECTIONS-2012-11\SURVEY-25FT.DWG



105+00

REVISION	DATE

FILENAME: SECTIONS-2012-11\SURVEY-25FT.DWG
 HANSON PROJ. NO. 10A0051
 SCALE: H. 1" = 20' V. 1" = 5'
 DATE: 12/14/12

LAYOUT	MLH	03/30/12
DRAWN	DAW	03/30/12
REVIEWED	JSJ	

HANSON
 © Copyright Hanson Professional Services Inc. 2013
Hanson Professional Services Inc.
 1525 South Sixth Street
 Springfield, Illinois 62703-2886
 Ph: (217) 788-2450 Fax: (217) 788-2503
 www.hanson-inc.com
 Offices Nationwide

APPROACH WORK TO
 RUNWAY END 31

CROSS-SECTIONS FOR
 APPROACH WORK
 STA. 105+00

IL PROJ.: C75-4223 BLOCK GRANT PROJ.: 3-17-0059-B15

MARSHALL COUNTY AIRPORT
 LACON, ILLINOIS