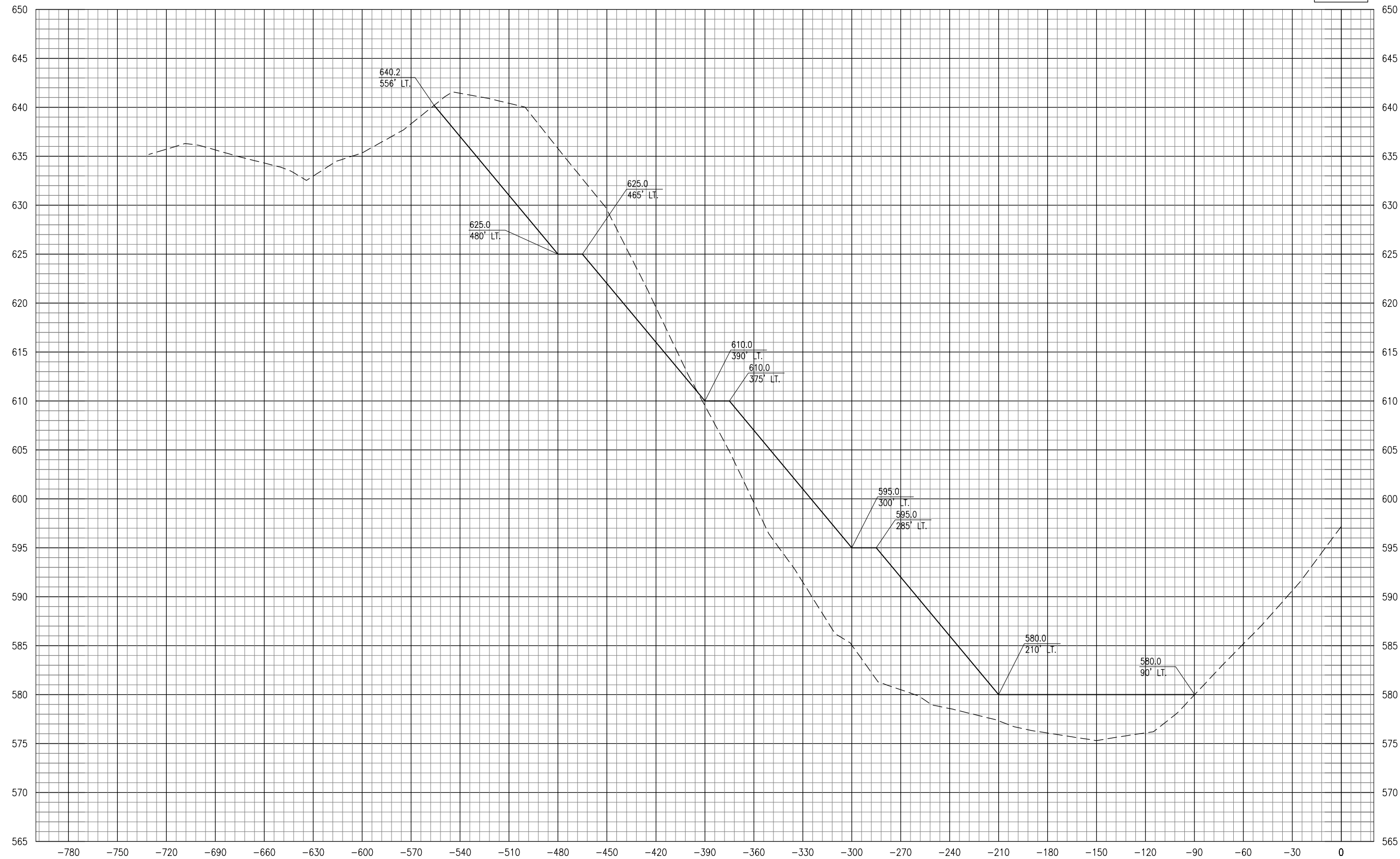


105+75



JAN 11, 2013 8:58 AM KINC00394
E:\AIRPORTS\MARSHALL\10A005\AIRPORT\SHEETS\SECTIONS-2012-11\SURVEY-25FT.DWG

REVISION	DATE

HANSON
 PROFESSIONAL SERVICES INC.
 1525 SOUTH SIXTH STREET
 SPRINGFIELD, ILLINOIS 62703-2986
 PH: (217) 788-2450 FAX: (217) 788-2503
 WWW.HANSON-INC.COM
 OFFICES NATIONWIDE

Hanson Proj. No. 10A0051	FILENAME SECTIONS-2012-11\SURVEY-25FT.DWG
Scale H. 1" = 20' V. 1" = 5'	Date 12/14/12
LAYOUT MLH 03/30/12	DRAWN DAW 03/30/12
REVIEWED JSL	

MARSHALL COUNTY AIRPORT
 LACON, ILLINOIS
 IL PROJ.: C75-4223 BLOCK GRANT PROJ.: 3-17-0059-B15

APPROACH WORK TO
 RUNWAY END 31
 CROSS-SECTIONS FOR
 APPROACH WORK
 STA. 105+75