

**GENERAL NOTES:**

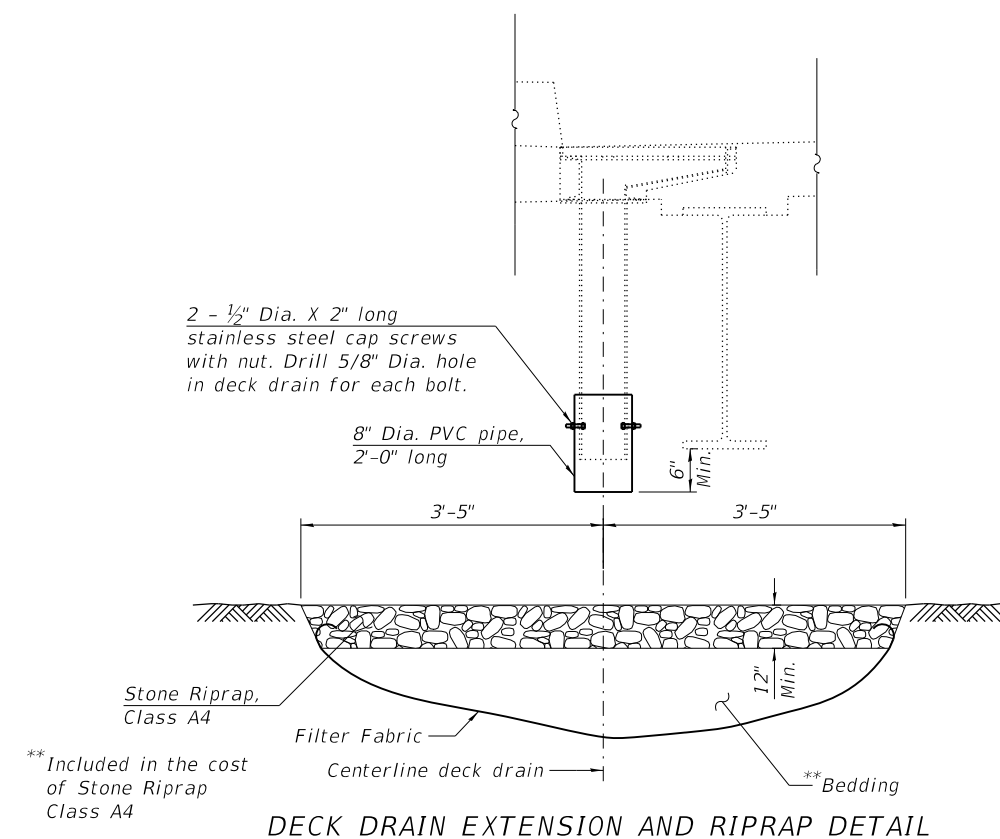
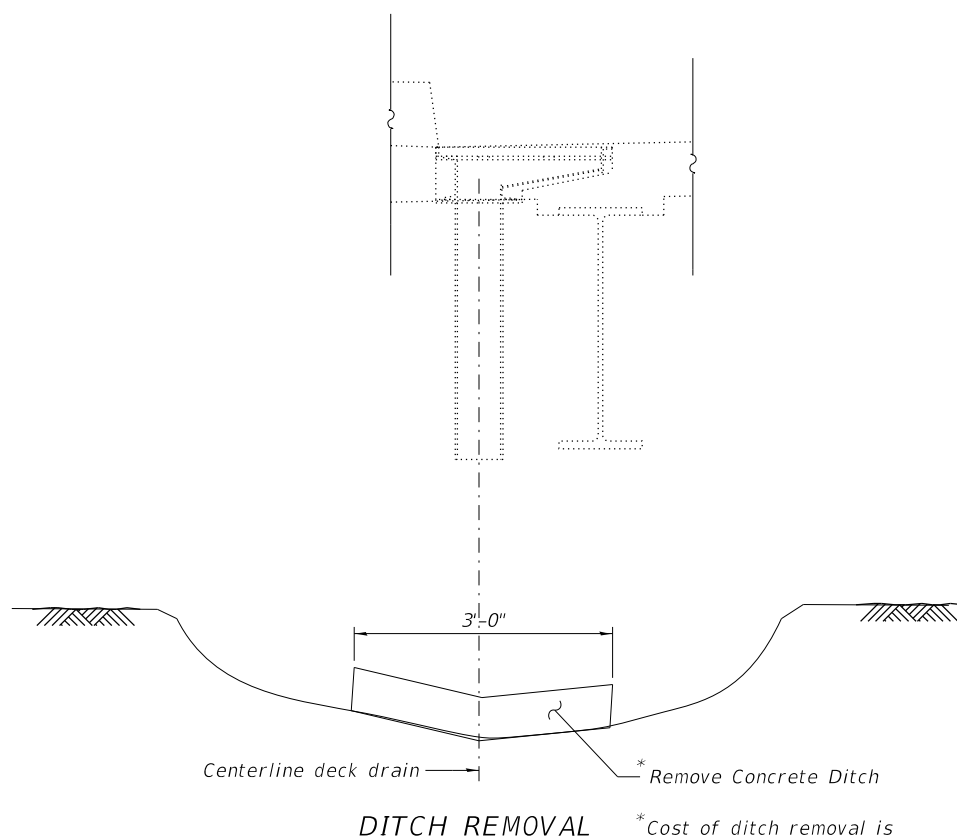
- Reinforcement bars designated (E) shall be epoxy coated.
- The Contractor shall take all necessary precautions for the protection of passing vehicles from falling objects and/or materials until completion of the work.
- Prior to pouring the new concrete deck for expansion joints reconstruction and deck slab repairs, all heavy or looser rust, loose mill scale, and other loose or potentially detrimental foreign material shall be removed from the surfaces in contact with concrete. Tightly adhered paint may remain unless otherwise noted. Removal shall be accomplished by method that will not damage the steel and the cost will be included in the pay item covering removal of the existing concrete.
- The existing structural steel coating contains lead. The Contractor shall take appropriate precautions to deal with the presence of lead on this project.
- Joint openings shall be adjusted according to article 520.04 of the standard specifications when the deck is poured at an ambient temperature other than 50° F.
- Existing structural steel that will be in contact with new structural steel shall be cleaned and painted prior to erection as required by the Special Provision "cleaning and painting contact surface areas of existing steel structures".
- Plan dimensions and details relative to existing plans are subject to nominal construction variations. The Contractor shall field verify existing dimensions and details affecting new construction and make necessary approved adjustments prior to construction or ordering of materials. Such variations shall not be cause for additional compensation for a change in scope of the work, however, the Contractor will be paid for the quantity actually furnished based at the unit price bid for the work.
- All new structural steel and bearing assembly shall be hot-dip galvanized. See Special Provisions for "Hot Dip Galvanizing For Structural Steel"
- Existing reinforcement bars extending into the removal area shall be cleaned, straightened and incorporated into the new construction. Any reinforcement bars that are damaged during concrete removal shall be replaced with an approved bar splicer or anchorage system. Cost included with Concrete Removal.
- All new fasteners shall be high strength bolts. Holes shall be subpunched or subdrilled 1 1/16" dia. and reamed in the field to 1 3/16" dia. for 3/4" dia. bolts, unless otherwise noted.
- Grind existing nicks, gouges and shallow cracks in the damaged beams as shown by the details included in the plans. Any cracks that cannot be removed by grinding approximately 1/4" deep shall be identified and reported to the Bureau of Bridges and Structures for further disposition. The Cost of grinding is included in Structural Steel Repair.

**INDEX OF SHEETS**

- S-01 General Plan and Elevation
- S-02 General Notes, Index of Sheets & Total Bill of Material
- S-03 Stage Construction
- S-04 Temporary Concrete Barrier
- S-05 Bridge Deck Repair Plan
- S-06 W. Abutment Joint Removal and Replacement (Sheet 1 of 2)
- S-07 W. Abutment Joint Removal and Replacement (Sheet 2 of 2)
- S-08 W. Abutment Joint Removal and Replacement details I
- S-09 W. Abutment Joint Removal and Replacement details II
- S-10 E. Abutment Joint Removal and Replacement (Sheet 1 of 2)
- S-11 E. Abutment Joint Removal and Replacement (Sheet 2 of 2)
- S-12 E. Abutment Joint Removal and Replacement details I
- S-13 E. Abutment Joint Removal and Replacement details II
- S-14 Preformed Joint Strip Seal Sidewalk (Sheet 1 of 3)
- S-15 Preformed Joint Strip Seal Sidewalk (Sheet 2 of 3)
- S-16 Preformed Joint Strip Seal Sidewalk (Sheet 3 of 3)
- S-17 Adjusting Drainage Scupper Details
- S-18 Framing Plan
- S-19 Structural Steel Repair Details
- S-20 West Abutment Repairs
- S-21 East Abutment Repairs
- S-22 Pier 1 Repairs
- S-23 Pier 2 Repairs
- S-24 Pier 3 Repairs
- S-25 Bar Splicers

**TOTAL BILL OF MATERIAL**

ITEM	UNIT	SUPER.	SUB.	TOTAL QUANTITY
Stone Riprap, Class A4	SQ YD	-	218	218
Filter Fabric	SQ YD	-	311	311
Concrete Removal	CU YD	27.0	1.6	28.6
Protective Shield	SQ YD	1452	-	1452
Concrete Structures	CU YD	-	1.6	1.6
Concrete Superstructure	CU YD	29.0	-	29.0
Bridge Deck Grooving	SQ YD	1910	-	1910
Protective Coat	SQ YD	68	6	74
Reinforcement Bars, Epoxy Coated	POUND	3940	-	3940
Bar Splicers	EACH	52	-	52
Preformed Joint Strip Seal	FOOT	188	-	188
Approach Slab Repair (Partial Depth)	SQ YD	19	-	19
Structural Steel Repair	POUND	385	-	385
Bridge Deck Latex Concrete Overlay, 2 1/2 Inches	SQ YD	2001	-	2001
Bridge Deck Scarification 3/4"	SQ YD	2001	-	2001
Structural Repair of Concrete (Depth Equal to or Less Than 5 Inches)	SQ FT	6	1078	1084
Deck Drain Extensions	EACH	3	-	3
Deck Slab Repair (Full Depth, Type I)	SQ YD	11	-	11
Drainage Scuppers to be Adjusted	EACH	8	-	8



MODEL: Default  
FILE NAME: P:\1710-745 PTB185-002 AES\WO#6 IL 68 over I-94\CAD\_Sheets\0160939-60M72-5002-GenNotes.dgn



USER NAME =	DESIGNED - KJD	REVISED - 02/18/2019
	CHECKED - MI, RTB	REVISED -
PLOT SCALE =	DRAWN - KJD	REVISED -
PLOT DATE =	DATE - 12/05/2018	REVISED -

**STATE OF ILLINOIS  
DEPARTMENT OF TRANSPORTATION**

**GENERAL NOTES, INDEX OF SHEETS & TOTAL BILL OF MATERIAL  
S.N. 016-0939 DUNDEE RD OVER EDENS EXPRESSWAY**

SHEET S-02 OF S-25 SHEETS

F.A.I. RTE.	SECTION	COUNTY	TOTAL SHEETS	SHEET NO.
94	1314.1-I	COOK	70	39
CONTRACT NO. 60M72				
ILLINOIS FED. AID PROJECT				