

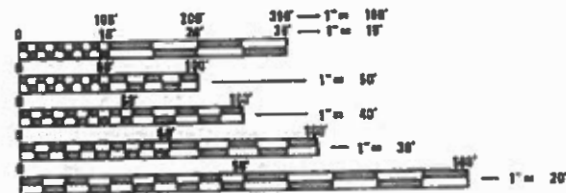
03-08-2019 LETTING ITEM 008

FOR INDEX OF SHEETS, SEE SHEET NO. 2

IMPROVEMENT LOCATED WITHIN THE CITY OF CHICAGO HEIGHTS

TRAFFIC DATA

US 30 (LINCOLN HIGHWAY)
2017 ADT=22,900
SPEED LIMIT=35 MPH
DESIGN CLASSIFICATION - OTHER PRINCIPAL ARTERIAL



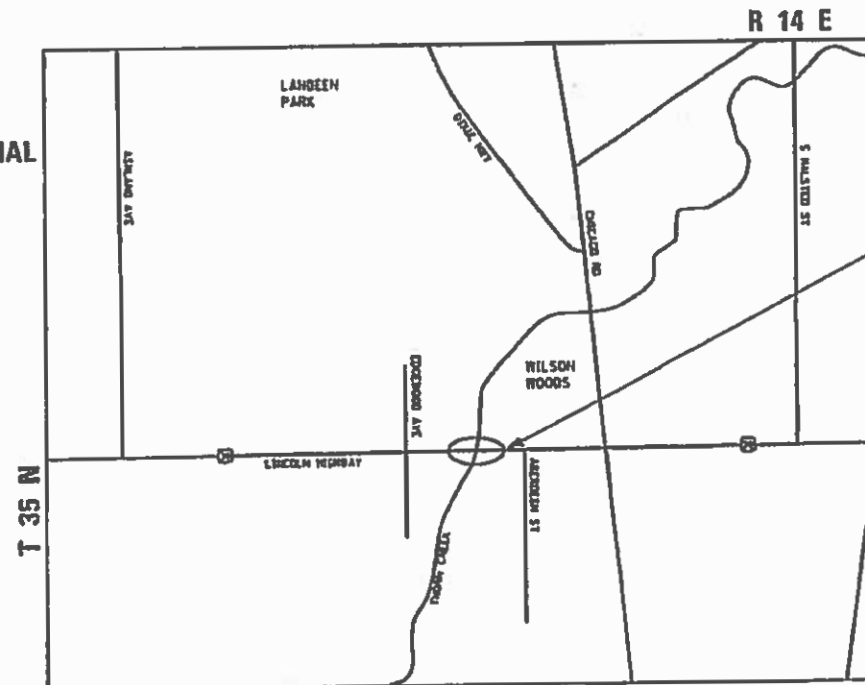
FULL SIZE PLANS HAVE BEEN PREPARED USING STANDARD ENGINEERING SCALES. REDUCED SIZED PLANS WILL NOT CONFORM TO STANDARD SCALES. IN MAKING MEASUREMENTS ON REDUCED PLANS, THE ABOVE SCALES MAY BE USED.

J.U.L.I.E.
JOINT UTILITY LOCATION INFORMATION FOR EXCAVATION
1-800-892-0123
OR 811

PROJECT MANAGER: FAWAD AQUEEL, P.E. (847) 705-4247

CONTRACT NO. 60R75

STATE OF ILLINOIS
DEPARTMENT OF TRANSPORTATION
DIVISION OF HIGHWAYS
PROPOSED
HIGHWAY PLANS
F.A.P. 353: US ROUTE 30 (LINCOLN HIGHWAY)
SECTION: 42R-1-BR
OVER THORN CREEK
PROJECT NO.: NHPP-2B33(070)
BRIDGE DECK OVERLAY
COOK COUNTY
C-91-208-12



BLOOM TOWNSHIP
GROSS LENGTH OF PROJECT = 158.3 FT = 0.03 MILE
NET LENGTH OF PROJECT = 158.3 FT = 0.03 MILE

IMPROVEMENT LOCATION
US RTE 30 OVER
THORN CREEK
STRUCTURE NO: 016-2537
STA. 459+25.8 TO
STA. 460+84.2

MILLENNIA PROFESSIONAL SERVICES
THOMAS V. NCO, P.E.
IL. LIC. NO. 062-058379
EXPIRES 11/30/2019

SIGNED: *Thomas V. NCO*
DATE: 11/09/2018
SIGNATURE AND SEAL APPLIES TO SHEETS: 4-6



HW ENGINEERING GROUP, LLC
JOSEPH M. GLENON, P.E.
IL. LIC. NO. 062-046610
EXPIRES 11/30/2019

SIGNED: *Joseph M. Glenon*
DATE: 11/09/2018
SIGNATURE AND SEAL APPLIES TO SHEETS: 1-3



HW ENGINEERING GROUP, LLC
DR. MOUSSA A. ISSA, S.E.
IL. LIC. NO. 091-005730
EXPIRES 11/30/2020

SIGNED: *Moussa A. Issa*
DATE: 11/09/2018
SIGNATURE AND SEAL APPLIES TO SHEETS: 7-14



F.A.P. RTE.	SECTION	COUNTY	TOTAL SHEETS	SHEET NO.
353	42R-1-BR	COOK	22	1
FED. ROAD DIST. NO. 1		ILLINOIS	CONTRACT NO. 60R75	
0-91-208-12				



STATE OF ILLINOIS
DEPARTMENT OF TRANSPORTATION
DIVISION OF HIGHWAYS
SUBMITTED December 18
Anthony A. Quattrone / CBS
REGIONAL ENGINEER
Feb 19 2019
ENGINEER OF DESIGN AND ENVIRONMENT
Paul P. Chaf
DIRECTOR OF HIGHWAYS PROJECT IMPLEMENTATION

PRINTED BY THE AUTHORITY OF THE STATE OF ILLINOIS

GENERAL NOTES

- BEFORE STARTING ANY EXCAVATION, THE CONTRACTOR SHALL CALL "J.U.L.I.E." AT 800-892-0123 OR 811 FOR FIELD LOCATIONS OF BURIED ELECTRIC, TELEPHONE, AND GAS FACILITIES. 48 HOUR NOTIFICATION IS REQUIRED.
- THE CONTRACTOR SHALL COORDINATE CONSTRUCTION ACTIVITIES WITH THE UTILITY COMPANIES, AND THE CITY OF CHICAGO HEIGHTS.
- THE CONTRACTOR WILL NOT BE ALLOWED TO SET UP A YARD OR FIELD OFFICE ON STATE PROPERTY WITHOUT WRITTEN PERMISSION FROM THE DEPARTMENT.
- ALL DAMAGE TO EXISTING PAVEMENT MARKING OR RAISED REFLECTIVE PAVEMENT MARKERS OUTSIDE THE REMOVAL LINE SHOWN ON THE PLANS SHALL BE REPLACED AT THE CONTRACTORS EXPENSE. NO ADDITIONAL COST TO THE DEPARTMENT.
- THE REMOVAL OF GUARDRAIL TERMINAL SECTIONS SHALL BE INCLUDED IN THE UNIT PRICE PER FOOT FOR "GUARDRAIL REMOVAL."
- THE CONTRACTOR SHALL VERIFY THE EXISTING TYPE/HEIGHT OF EXISTING GUARDRAIL BEFORE ORDERING THE NEW TERMINAL SECTION. COST INCLUDED WITH THE COST OF THE TERMINAL." THE TERMINAL SECTION SHALL MATCH THE HEIGHT OF THE EXISTING GUARDRAIL.
- BEFORE BEGINNING ANY WORK, THE CONTRACTOR SHALL RETAIN AND RECORD FOR FUTURE REFERENCES, ALL EXISTING PAVEMENT MARKING LINES AND RAISED REFLECTIVE PAVEMENT MARKERS IN ORDER THAT THESE LOCATIONS CAN BE RE-ESTABLISHED FOR STRIPING. EXACT LOCATIONS OF ALL STRIPING SHALL BE AS DIRECTED BY THE ENGINEER.
- DRAINAGE ADJUSTMENT OR RECONSTRUCTION LOCATIONS WILL BE DETERMINED IN THE FIELD BY THE ENGINEER.
- THE CONTRACTOR SHALL BE RESPONSIBLE FOR VERIFYING ALL DIMENSIONS AND CONDITIONS EXISTING IN THE FIELD PRIOR TO CONSTRUCTION AND ORDERING MATERIALS.
- THE CONTRACTOR SHALL CONTACT THE DISTRICT ONE TRAFFIC CONTROL SUPERVISOR AT (847) 705-4470 A MINIMUM OF 72 HOURS IN ADVANCE OF BEGINNING WORK.
- THE CONTRACTOR SHALL BE REQUIRED TO PROVIDE ACCESS TO ABUTTING PROPERTY AT ALL TIMES DURING THE CONSTRUCTION OF THIS PROJECT.
- DO NOT SCALE PLANS FOR CONSTRUCTION DIMENSIONS.
- DOUBLE LANE MARKERS ARE TO BE USED AS SHOWN ON THE DISTRICT ONE DETAIL "TYPICAL APPLICATIONS - RAISED REFLECTIVE PAVEMENT MARKERS (SNOW-PLOW RESISTANT)" SHOWN ON THE PLANS.
- FRAMES AND GRATES ADJUSTMENT OF PRIVATE UTILITIES WITHIN THE LIMITS OF THE IMPROVEMENTS SHALL BE DONE BY THEIR RESPECTIVE OWNERS AND ARE NOT PART OF THIS CONTRACT.
- THE CONTRACTOR SHALL REMOVE AND DISPOSE OF ALL LOGS, SHRUBS, BUSHES, SAPLINGS, UNDERBRUSH OR DEBRIS ACCORDING TO SECTION 201 OF THE STANDARD SPECIFICATIONS AT LOCATIONS REQUIRING ACCESS TO THE SUBSTRUCTURE. THIS WORK WILL NOT BE PAID FOR SEPARATELY, BUT THE COST SHALL BE CONSIDERED AS INCLUDED IN THE CONTRACT AND NO ADDITIONAL COMPENSATION WILL BE ALLOWED.
- THE DEPARTMENT HAS DETERMINED THAT IN STREAM WORK IS NOT REQUIRED FOR THE WORK SPECIFIED IN THIS CONTRACT. THE DEPARTMENT HAS NOT OBTAINED A 404 PERMIT. IF THE CONTRACTOR CHOOSES TO USE ACTIVITIES REQUIRING AN USACE 404 PERMIT IT IS THE CONTRACTOR'S RESPONSIBILITY TO SECURE THE PROPER USACE PERMITS.
- THE CONTRACTOR SHALL TAKE NECESSARY PRECAUTIONS TO INSURE THAT NO DEBRIS WILL ENDANGER OR INTERFERE WITH TRAFFIC ON THE BIKE PATH BENEATH THE BRIDGE ACCORDING TO ARTICLE 107.09 OF THE STANDARD SPECIFICATIONS. THIS WORK WILL NOT BE PAID SEPARATELY, BUT SHALL BE INCLUDED IN THE CONTRACT UNIT PRICE FOR THE APPROPRIATE PAY ITEM INVOLVED AND NO ADDITIONAL COMPENSATION WILL BE ALLOWED.
- THE CONTRACTOR SHALL CONTACT THE FOREST PRESERVE DISTRICT OF COOK COUNTY (FPDCC) AT (800) 870-3666 A MINIMUM OF 72 HOURS IN ADVANCE OF BEGINNING WORK. THE FPDCC THORN CREEK TRAIL PASSES UNDER THE WEST SPAN OF THE BRIDGE. THE TRAIL UNDER THE BRIDGE SHALL BE CLOSED WHEN WORK IS OCCURRING THAT MAY DEEMED HAZARDOUS BY THE ENGINEER TO PEDESTRIANS BELOW THE BRIDGE. CLOSURES OF THE TRAIL MAY ONLY OCCUR SUNDAY THROUGH THURSDAY NIGHTS BETWEEN SUNSET AND 6:30 AM
- THE CONTRACTOR SHALL NOTIFY PACE'S TRANSPORTATION ENGINEER AT (847) 228-3584 AT LEAST 1 WEEK IN ADVANCE OF THE BEGINNING OF CONSTRUCTION
- TWO WEEKS PRIOR TO THE PLACEMENT OF PERMANENT PAVEMENT MARKINGS, THE ENGINEER SHALL CONTACT MS. PATRICE HARRIS, AREA TRAFFIC FIELD TECHNICIAN, AT Patrice.Harris@illinois.gov

INDEX OF SHEETS

- COVER SHEET
- INDEX OF SHEETS, HIGHWAY STANDARDS, GENERAL NOTES
- SUMMARY OF QUANTITIES
- ROADWAY AND PAVEMENT MARKING PLAN
- 5-6 SUGGESTED STAGES OF CONSTRUCTION AND TRAFFIC CONTROL
- 7-14 STRUCTURAL SHEETS (NO. 016-2537)
- FRAMES AND LIDS ADJUSTMENT AND MILLING (BD-08)
- BUTT JOINT AND HMA TAPER DETAILS (BD-32)
- TRAFFIC CONTROL AND PROTECTION FOR SIDE ROADS, INTERSECTIONS AND DRIVEWAYS (TC10)
- RAISED REFLECTIVE PAVEMENT MARKERS (SNOW PLOW RESISTANT) (TC11)
- DISTRICT ONE TYPICAL PAVEMENT MARKINGS (TC13)
- TRAFFIC CONTROL AND PROTECTION AT TURN BAYS (TO REMAIN OPEN TO TRAFFIC) (TC14)
- PAVEMENT MARKING LETTERS AND SYMBOLS FOR TRAFFIC STAGING (TC16)
- ARTERIAL ROAD INFORMATION SIGN (TC22)

LIST OF ILLINOIS DOT HIGHWAY STANDARDS

000001-07	STANDARD SYMBOLS, ABBREVIATIONS, AND PATTERNS
604001-04	FRAME AND LIDS TYPE 1
606001-07	CONCRETE CURB TYPE B AND COMBINATION CONCRETE CURB AND GUTTER
701006-05	OFF-ROAD OPERATIONS, 2L, 2W, 15' (4.5 M) TO 24" (600 MM) FROM PAVEMENT EDGE
701011-04	OFF-ROAD MOVING OPERATIONS, 2L, 2W, DAY ONLY
701101-05	OFF-ROAD OPERATIONS, MULTILANE, 15' (4.5 M) TO 24" (600 MM) FROM PAVEMENT EDGE
701301-04	LANE CLOSURE, 2L, 2W, SHORT TIME OPERATIONS
701427-05	LANE CLOSURE, MULTILANE, INTERMITTENT OR MOVING OPERATION, FOR SPEEDS EQUAL OR LESS THAN 40 MPH
701602-10	URBAN LANE CLOSURE, MULTILANE, 2W WITH BIDIRECTIONAL LEFT TURN LANE
701606-10	URBAN LANE CLOSURE, MULTILANE, 2W WITH MOUNTABLE MEDIAN
701801-06	LANE CLOSURE MULTILANE 1W OR 2W CROSSWALK OR SIDEWALK CLOSURE
701901-08	TRAFFIC CONTROL DEVICES
704001-08	TEMPORARY CONCRETE BARRIER
781001-04	TYPICAL APPLICATIONS RAISED REFLECTIVE PAVEMENT MARKERS
782006	GUARDRAIL AND BARRIER WALL REFLECTOR MOUNTING DETAILS

HOT MIX ASPHALT MIXTURE REQUIREMENTS

MIXTURE TYPE	AIR VOIDS at Ndes	QMP
APPROACH PAVEMENT		
HOT-MIX ASPHALT SURFACE COURSE, MIX "D", N70 (IL-9.5 mm) 2"	4% @ 70 GYR.	QC/OA
QMP DESIGNATION: Quality Control/Quality Assurance (QC/OA)		

MIXTURE NOTES:

- THE UNIT WEIGHT USED TO CALCULATE ALL HOT-MIX ASPHALT SURFACE MIXTURES IS 112 LBS/SQ YD/IN
- THE "AC TYPE" FOR POLYMERIZED HMA MIXES SHALL BE "SBS/SBR PG 76-22" AND FOR NON-POLYMERIZED HMA THE "AC TYPE" SHALL BE "PG 64-22" UNLESS MODIFIED BY DISTRICT ONE SPECIAL PROVISIONS. FOR USE OF RECYCLED MATERIALS SEE DISTRICT ONE SPECIAL PROVISIONS.

QUALITY MANAGEMENT PROGRAM (QMP) IDENTIFIES THE PARTICULAR QUALITY CONTROL SPECIFICATION THAT APPLIES TO THE HMA MIXTURE.

**STATE OF ILLINOIS
DEPARTMENT OF TRANSPORTATION**

**US ROUTE 30 (LINCOLN HWY)
OVER THORN CREEK (SN 016-2537)**

**INDEX OF SHEETS, LIST OF IDOT
HIGHWAY STANDARD, GENERAL NOTES**

F.A.P. RTE.	SECTION	COUNTY	TOTAL SHEETS	SHEET NO.
353	42R-1-BR	COOK	22	2
CONTRACT NO.			60R75	

SCALE: N/A SHEET NO. 1 OF 1 SHEETS STA. TO STA. FED. ROAD DIST. NO. 1 ILLINOIS FED. AID PROJECT

SUMMARY OF QUANTITIES			80% FED 20% STATE	CONSTRUCTION TYPE CODE	
CODE NO.	ITEM DESCRIPTION	UNIT	TOTAL QUANTITY	ROADWAY	URBAN
				0047	
28000510	INLET FILTERS	EACH	8	8	
40600290	BITUMINOUS MATERIALS (TACK COAT)	POUND	219	219	
40600982	HOT-MIX ASPHALT SURFACE REMOVAL - BUTT JOINT	SQ YD	245	245	
40603340	HOT-MIX ASPHALT SURFACE COURSE, MIX "D", N70	TON	69	69	
42400200	PORTLAND CEMENT CONCRETE SIDEWALK 5 INCH	SQ FT	400	400	
44000151	HOT-MIX ASPHALT SURFACE REMOVAL, 1/2"	SQ YD	365	365	
44000500	COMBINATION CURB AND GUTTER REMOVAL	FOOT	80	80	
44000600	SIDEWALK REMOVAL	SQ FT	400	400	
50102400	CONCRETE REMOVAL	CU YD	21.2	21.2	
50104000	BRIDGE RAIL REMOVAL	FOOT	15	15	
50300255	CONCRETE SUPERSTRUCTURE	CU YD	20	20	
50300260	BRIDGE DECK GROOVING	SQ YD	387	387	
50300300	PROTECTIVE COAT	SQ YD	225	225	
50800205	REINFORCEMENT BARS, EPOXY COATED	POUND	8830	8830	
60605000	COMBINATION CONCRETE CURB AND GUTTER, TYPE B-6.24	FOOT	80	80	
* 63100085	TRAFFIC BARRIER TERMINAL, TYPE 6	EACH	2	2	
63200310	GUARDRAIL REMOVAL	FOOT	88	88	
67000400	ENGINEER'S FIELD OFFICE, TYPE A	CAL MO	6	6	
67100100	MOBILIZATION	L SUM	1	1	
70107006	PAVEMENT MARKING BLACKOUT TAPE, 6"	FOOT	1606	1606	
70300904	PAVEMENT MARKING TAPE, TYPE IV 4"	FOOT	5433	5433	
70300906	PAVEMENT MARKING TAPE, TYPE IV 6"	FOOT	269	269	
70300924	PAVEMENT MARKING TAPE, TYPE IV 24"	FOOT	12	12	
70400100	TEMPORARY CONCRETE BARRIER	FOOT	547	547	
70400200	RELOCATE TEMPORARY CONCRETE BARRIER	FOOT	354	354	
70600260	IMPACT ATTENUATORS, TEMPORARY (FULLY REDIRECTIVE, NARROW), TEST LEVEL 3	EACH	4	4	
70600332	IMPACT ATTENUATORS, RELOCATE (FULLY REDIRECTIVE, NARROW), TEST LEVEL 3	EACH	2	2	
* 78000100	THERMOPLASTIC PAVEMENT MARKING - LETTERS AND SYMBOLS	SQ FT	37	37	

* SPECIALTY ITEM

SUMMARY OF QUANTITIES			80% FED 20% STATE	CONSTRUCTION TYPE CODE	
CODE NO.	ITEM DESCRIPTION	UNIT	TOTAL QUANTITY	ROADWAY	URBAN
				0047	
* 78000200	THERMOPLASTIC PAVEMENT MARKING - LINE 4"	FOOT	1789	1789	
* 78000400	THERMOPLASTIC PAVEMENT MARKING - LINE 6"	FOOT	125	125	
* 78000600	THERMOPLASTIC PAVEMENT MARKING - LINE 12"	FOOT	79	79	
* 78009004	MODIFIED URETHANE PAVEMENT MARKING - LINE 4"	FOOT	275	275	
* 78100100	RAISED REFLECTIVE PAVEMENT MARKER	EACH	16	16	
* 78100300	REPLACEMENT REFLECTOR	EACH	50	50	
* 78200011	BARRIER WALL REFLECTORS, TYPE C	EACH	42	42	
* 78300200	RAISED REFLECTIVE PAVEMENT MARKER REMOVAL	EACH	16	16	
* X2700003	GROOVING FOR RECESSED PAVEMENT MARKING 8"	FOOT	35	35	
X2700004	PREFORMED PLASTIC PAVEMENT MARKING, TYPE B - LINE 7"	FOOT	35	35	
□ X5537800	STORM SEWERS TO BE CLEANED 12"	FOOT	48	48	
X6030310	FRAMES AND LIDS TO BE ADJUSTED (SPECIAL)	EACH	1	1	
X7010216	TRAFFIC CONTROL AND PROTECTION, (SPECIAL)	L SUM	1	1	
X7030005	TEMPORARY PAVEMENT MARKING REMOVAL	SQ FT	1970	1970	
Z0001800	APPROACH SLAB REPAIR (PARTIAL DEPTH)	SQ YD	12	12	
Z0006012	BRIDGE DECK LATEX CONCRETE OVERLAY, 2 1/4 INCHES	SQ YD	339	339	
Z0012130	BRIDGE DECK SCARIFICATION 3/4"	SQ YD	339	339	
Z0012754	STRUCTURAL REPAIR OF CONCRETE (DEPTH EQUAL TO OR LESS THAN 5 INCHES)	SQ FT	25	25	
Z0012755	STRUCTURAL REPAIR OF CONCRETE (DEPTH GREATER THAN 5 INCHES)	SQ FT	50	50	
Z0016001	DECK SLAB REPAIR (FULL DEPTH, TYPE I)	SQ YD	1	1	
Z0016002	DECK SLAB REPAIR (FULL DEPTH, TYPE II)	SQ YD	25	25	
□ Z0018500	DRAINAGE STRUCTURES TO BE CLEANED	EACH	4	4	
Z0030850	TEMPORARY INFORMATION SIGNING	SQ FT	52	52	

□ NON-PART. (100% STATE)

FILE NAME : P:\1111-532 IDOT PTB161 Item 8 (Various-Variou)\Work Order #2 - SN 016-2537 US30\Civil Sheets\03-D160R75-sht-500.dgn
 USER : NAME :
 \$USER\$

HBM
 ENGINEERING GROUP, LLC
 4415 WEST HARRISON ST.
 SUITE 231
 HILLSIDE, IL 60162
 PHONE: (708) 236-0900
 FAX: (708) 236-0901

DESIGNED - KJD	REVISED -
DRAWN - KJD	REVISED -
CHECKED - JMG, RTB	REVISED -
DATE - 12/7/2018	REVISED -

STATE OF ILLINOIS
 DEPARTMENT OF TRANSPORTATION

US ROUTE 30 (LINCOLN HWY)
 OVER THORN CREEK (SN 016-2537)

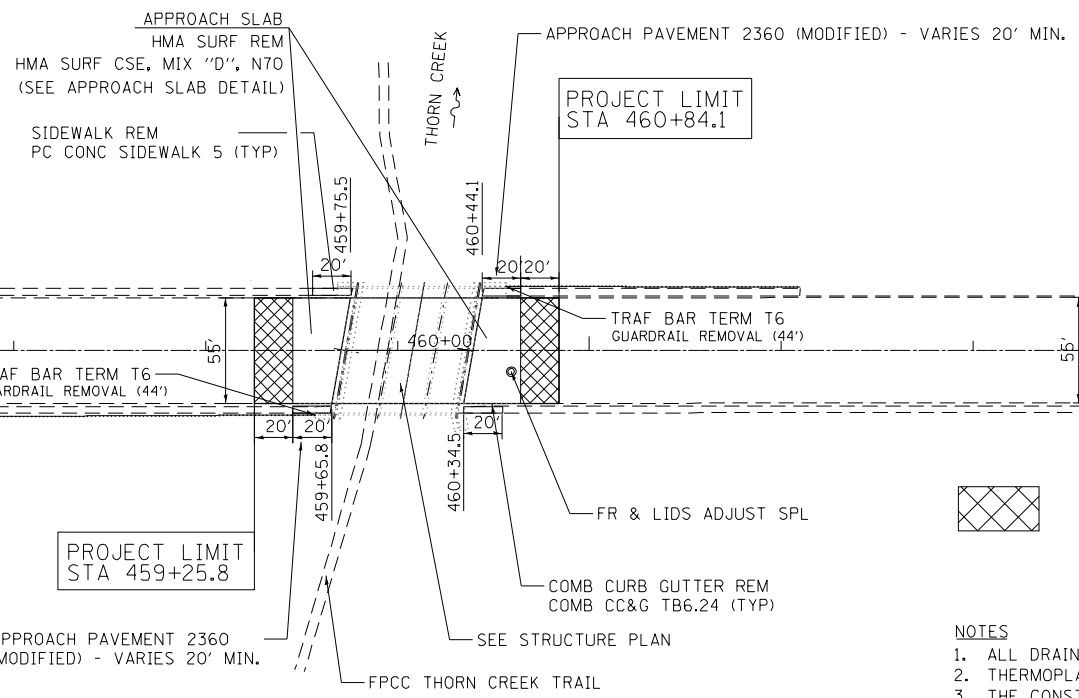
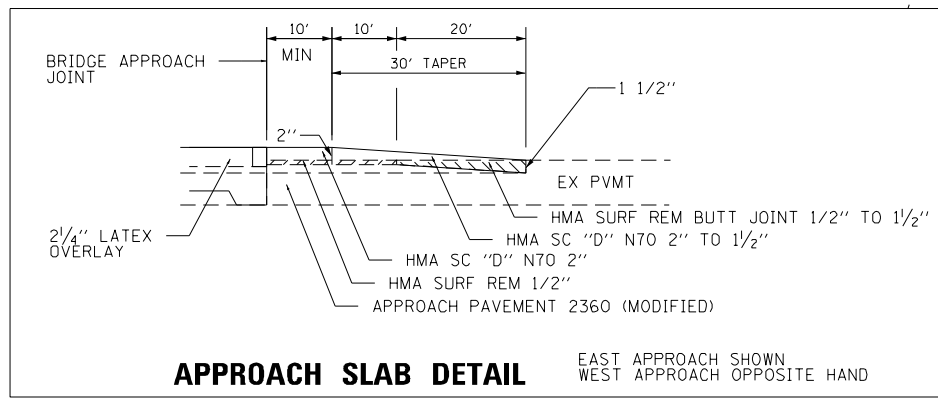
SUMMARY OF QUANTITIES

F.A.P. RTE. 353	SECTION 42R-1-BR	COUNTY COOK	TOTAL SHEETS 22	SHEET NO. 3
CONTRACT NO. 60R75			FED. ROAD DIST. NO. 1 (ILLINOIS) FED. AID PROJECT	

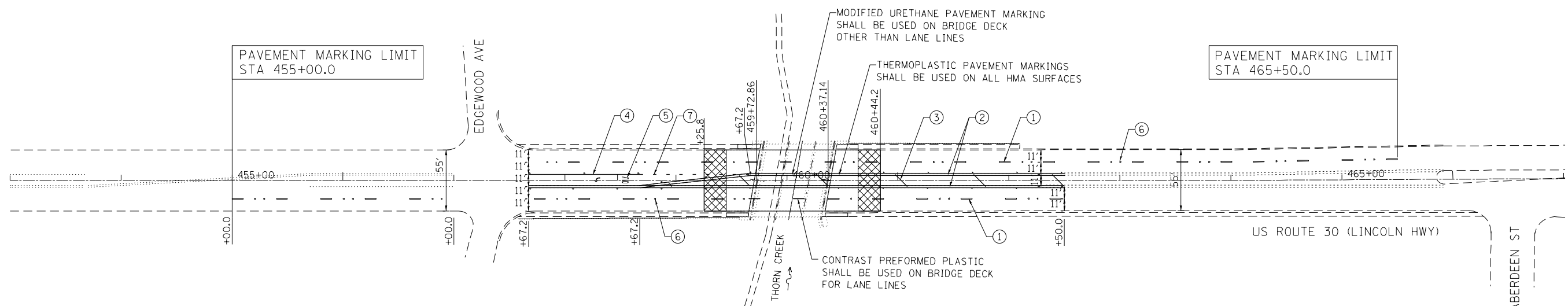
SCALE: N/A SHEET NO. 1 OF 1 SHEETS STA. TO STA.

P:\1111-532 IDOT PTB161 Item 8 (Various-Variou)\Work Order #2 - SN 016-2537 US30\Civil Sheets\03-D160R75-sht-500.dgn

GUARDRAIL NOTE:
 THE TRAF BAR TERM T6 SHALL BE CONNECTED TO EXISTING GUARDRAIL. THE COST TO CONNECT THE TRAF BAR TERM T6 TO THE EXISTING GUARDRAIL SHALL NOT BE PAID FOR SEPARATELY BUT SHALL BE INCLUDED IN THE UNIT BID PRICE OF TRAF BAR TERM T6.



- NOTES**
1. ALL DRAINAGE STRUCTURES WITHIN PROJECT LIMITS SHALL BE CLEANED.
 2. THERMOPLASTIC PAVEMENT MARKINGS ARE FOR HMA PAVEMENT.
 3. THE CONSTRUCTOR SHALL PLACE PROPOSED PAVEMENT MARKINGS IN ACCORDANCE WITH DISTRICT 1 TYPICAL PAVEMENT MARKINGS DETAIL (TC-13).
 4. THE CONTRACTOR SHALL PLACE PROPOSED RAISED REFLECTIVE PAVEMENT MARKERS ON NEW HMA SURFACES ONLY IN ACCORDANCE WITH DISTRICT 1 RAISED REFLECTIVE PAVEMENT MARKERS (TC-11), AND REPLACEMENT REFLECTER WITHIN THE STAGING LIMIT.



- PAVEMENT MARKING LEGEND (SEE NOTE 2)**
- | | |
|--|---|
| ① 4" WHITE LANE LINE (10' DASH 30' SKIP) | ④ 6" WHITE LINE |
| ② 4" DOUBLE YELLOW | ⑤ LETTERS AND SYMBOLS (TYP) |
| ③ 12" YELLOW SOLID LINE | ⑥ RAISED REFLECTIVE PAVEMENT MARKER (SEE NOTE 4)
REPLACEMENT REFLECTOR |
| | ⑦ 6" WHITE LINE (2' DASH 6' SKIP) |

THE RESIDENT ENGINEER SHALL CONTACT MS. PATRICE HARRIS, AREA TRAFFIC FIELD ENGINEER, AT PATRICE.HARRIS@ILLINOIS.GOV A MINIMUM OF TWO (2) WEEKS PRIOR TO THE PLACEMENT OF PERMANENT PAVEMENT MARKINGS.

FILE NAME = P:\2011\ME11007_Ver-Var-Ph1\CADD\W002.US30.et.ThornCrk\Shets\DI60R75-sht-plan.dgn
 USER = JAC
 PLOT DATE = 12/10/2018

2600 Warrenville Rd, Suite 203, Downers Grove, IL 60515
 630.705.0110 voice, 630.839.2566 fax
 www.mps-ill.com

MILLENNIA PROFESSIONAL SERVICES

DESIGNED - TVN	REVISED -
DRAWN - JP	REVISED -
CHECKED - TVN	REVISED -
DATE - 12/10/2018	REVISED -

**STATE OF ILLINOIS
 DEPARTMENT OF TRANSPORTATION**

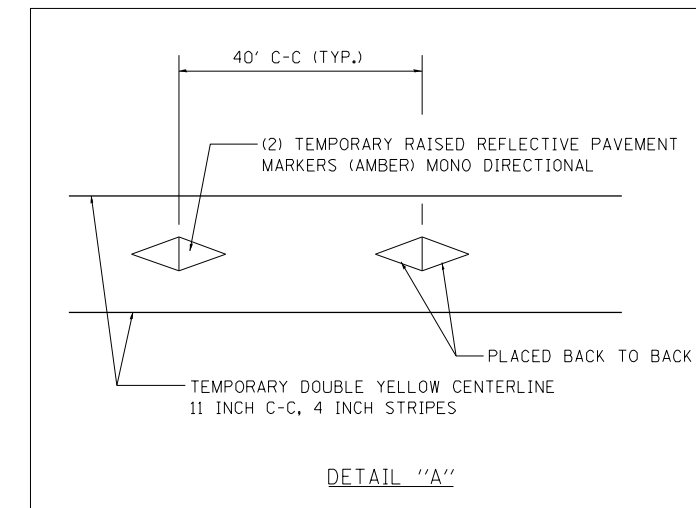
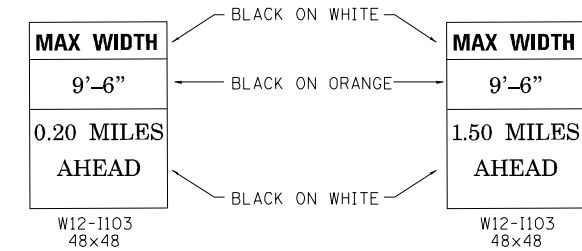
**US ROUTE 30 (LINCOLN HWY)
 OVER THORN CREEK (SN 016-2537)**

**ROADWAY PLAN AND
 PAVEMENT MARKING PLAN**

F.A.P. RTE. 353	SECTION 42R-1-BR	COUNTY COOK	TOTAL SHEETS 22	SHEET NO. 4
CONTRACT NO. 60R75				

MAINTENANCE OF TRAFFIC GENERAL NOTES

1. THE SUGGESTED STAGES OF CONSTRUCTION AND TRAFFIC CONTROL PLANS SHALL SERVE AS A GUIDE FOR SAFE DIVERSION OF TRAFFIC DURING EXECUTION OF THIS CONTRACT. HOWEVER, THE CONTRACTOR MAY IMPROVE OR MODIFY THE TRAFFIC CONTROL PLANS TO MEET CONSTRUCTION NEEDS BUT NOT AT THE EXPENSE OF PUBLIC SAFETY OR CONVENIENCE. ANY CHANGES TO THE TRAFFIC CONTROL PLAN SHALL BE SUBMITTED TO THE ENGINEER FOR APPROVAL.
2. THE CONTRACTOR SHALL BE REQUIRED TO MAINTAIN TRAFFIC IN ACCORDANCE WITH THE TRAFFIC CONTROL PLANS, SPECIAL PROVISIONS, APPLICABLE STATE STANDARDS, AND AS DIRECTED BY THE ENGINEER.
3. THE CONTRACTOR SHALL MAINTAIN A MINIMUM OF ONE THROUGH LANE IN EACH DIRECTION THROUGH OUT THE PROJECT AREA AT ALL TIMES.
4. BI-DIRECTIONAL DRUMS WITH STEADY BURNING LIGHTS SHALL BE PROVIDED AS SHOWN IN THE PLANS AND SPACED 50 FEET CENTER TO CENTER ON TANGENT, AND 25 FEET CENTER TO CENTER ON TAPERS AND CURVES.
5. THE CONTRACTOR SHALL PROVIDE ADEQUATE TEMPORARY DRAINAGE DURING ALL PHASES OF CONSTRUCTION.
7. ALL EXISTING SIGNS THAT CONFLICT WITH THE TRAFFIC CONTROL PLAN SHALL BE COVERED OR REMOVED IN ACCORDANCE WITH ARTICLE 107.25 OF THE STANDARD SPECIFICATIONS.
8. THE CONTRACTOR SHALL PROVIDE, INSTALL, MAINTAIN AND REMOVE ALL SIGNS AND SIGN SUPPORTS REQUIRED FOR TRAFFIC CONTROL AND PROTECTION.
9. REMOVAL OF EXISTING RAISED REFLECTIVE PAVEMENT MARKER AND USING PAVEMENT MARKING BLACKOUT TAPE THAT CONFLICT WITH STAGING MARKINGS.
10. TAPER LENGTH FOR TRAFFIC CONTROL DEVICES IS DEFINED BY:
 $L = WS / 60$
 L = TAPER LENGTH IN FEET
 W = WIDTH OF OFFSET IN FEET
 S = POSTED SPEED IN MPH.
11. THE FOLLOWING TEMPORARY PAVEMENT MARKINGS SHALL BE PROVIDED IN ACCORDANCE WITH SECTION 703 "WORK ZONE PAVEMENT MARKINGS" OF STANDARD SPECIFICATIONS AT ALL THE FOLLOWING LOCATIONS IN EACH OF THE VARIOUS STAGES OF CONSTRUCTION:
 4 IN WHITE EDGE LINE
 4 IN YELLOW EDGE LINE
 6 IN WHITE
 4 IN DOUBLE YELLOW (AT 11" C-C)
12. TEMPORARY RAISED REFLECTIVE PAVEMENT MARKERS SHALL BE PLACED WITHIN THE PROJECT IN ACCORDANCE WITH THE STAGING PLANS AND THE DETAIL A ON THIS PLAN SHEET.
13. TYPE III BARRICADES SHALL BE PROVIDED AT LOCATIONS SHOWN IN THE PLANS.
14. ONE MONO-DIRECTIONAL FLASHING AMBER BEACON SHALL BE MOUNTED TO THE FIRST TWO WARNING SIGNS ON EACH APPROACH. THE FLASHING AMBER BEACON SHALL BE OPERATIONAL DURING HOURS OF DARKNESS.
15. ALL TEMPORARY CONCRETE BARRIER WALL AND TEMPORARY IMPACT ATTENUATORS MUST BE SEATED ON BARE, CLEAN PAVEMENT OR PAVED SHOULDER.
16. TEMPORARY INFORMATION SIGNING SHALL BE INSTALLED IN ACCORDANCE WITH DETAIL TC-22 AND SHALL BE PAID FOR AT THE CONTRACT UNIT PRICE PER SQUARE FOOT AS "TEMPORARY INFORMATION SIGNING".
17. ADVANCE WIDTH RESTRICTION SIGNS, W12-1103, SHALL BE INSTALLED. ONE SIGN SHALL BE INSTALLED APPROXIMATELY 0.20 MILES EAST OF THE PROJECT AT THE INTERSECTION OF US ROUTE 30 AND IL ROUTE 1. ONE SIGN SHALL BE INSTALLED APPROXIMATELY 1.50 MILES WEST OF THE PROJECT AT THE INTERSECTION OF US ROUTE 30 AND WESTERN AVE.
18. THE CONTRACTOR SHALL CONTACT THE DISTRICT ONE TRAFFIC CONTROL SUPERVISOR AT CORY.JUCIUS@ILLINOIS.GOV OR (847) 705-4470 A MINIMUM OF 72 HOURS IN ADVANCE OF BEGINNING WORK.



FILE NAME = P:\2011\ME11007_VerVar_Phi\CADD\W002_US30.et_ThornCrk\Shots\160R75-sht-stage00.notes.dgn
 USER = JUCIUS
 PLOT DATE = 11/9/2018
 PLOT TIME = 10:00:00
 PLOT SCALE = 1:1
 PLOT DEVICE = Millennium Professional Services



2600 Warrenville Rd, Suite 203, Downers Grove, IL 60515
 630.705.0110 voice, 630.839.2566 fax
 www.mps-ill.com
MILLENNIA PROFESSIONAL SERVICES

DESIGNED	-	TVN	REVISED	-
DRAWN	-	JP	REVISED	-
CHECKED	-	TVN	REVISED	-
DATE	-	11/9/2018	REVISED	-

**STATE OF ILLINOIS
DEPARTMENT OF TRANSPORTATION**

**US ROUTE 30 (LINCOLN HWY)
OVER THORN CREEK (SN 016-2537)**

STAGING NOTES

SCALE:	SHEET NO.	OF	SHEETS	STA.	TO STA.
--------	-----------	----	--------	------	---------

F.A.P. RTE.	SECTION	COUNTY	TOTAL SHEETS	SHEET NO.
353	42R-1-BR	COOK	22	5
CONTRACT NO.			60R75	
FED. ROAD DIST. NO. 1 ILLINOIS FED. AID PROJECT				

P:\2011\ME11007_VerVar_Phi\CADD\W002_US30.et_ThornCrk\Shots\160R75-sht-stage00.notes.dgn

Benchmark: Elevations shown are with respect to Elevation 652.28 at Top of Pier 1 as shown on historical drawings Contract 38895 (1985).

Existing Structure: This bridge (S.N. 016-2537) was reconstructed in 1986. The current structure is a 3-span reinforced concrete slab bridge which measures 67'-0" Out-to-Out Deck and 64'-3³/₈" Bk.-to-Bk. Abutments. The substructure consists of reinforced concrete abutments on steel piles and reinforced concrete wall piers on steel piles. One lane of traffic is to be maintained for each direction utilizing Stage Construction.

LOADING
 HS20-44 & ALTERNATE ORIGINAL CONSTRUCTION
 Allow 25 #/sq. ft. for future wearing surface

DESIGN SPECIFICATIONS
 2002 AASHTO Standard Specifications for Highway Bridges

ORIGINAL CONSTRUCTION
 1983 AASHTO Bridge Design Specification

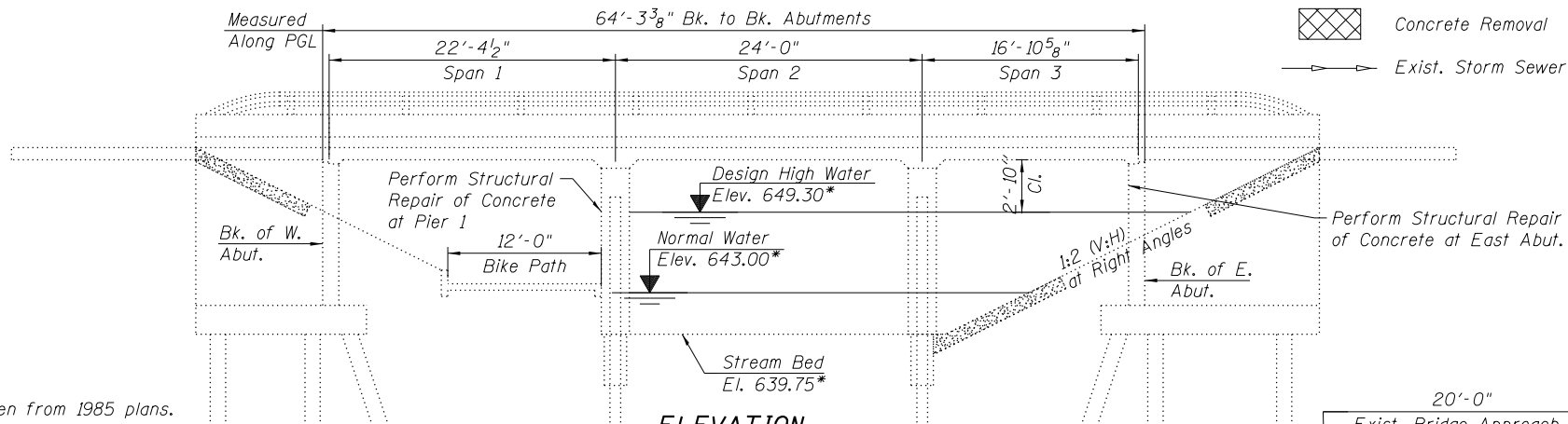
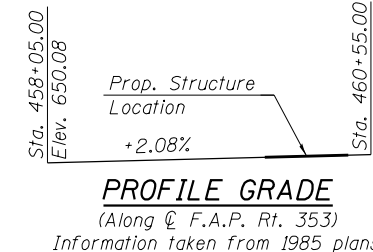
* Information taken from 1985 plans.

LEGEND

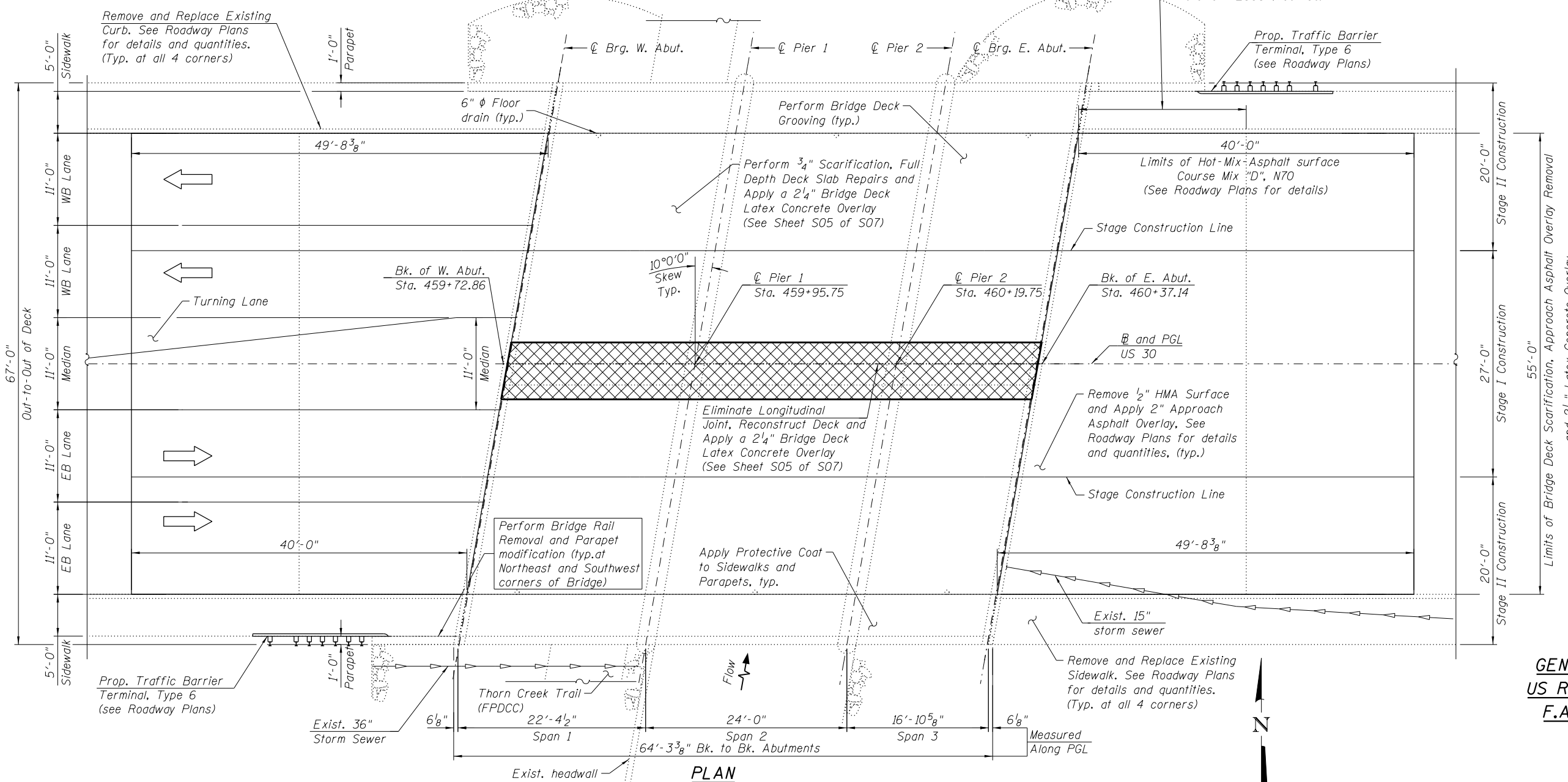
- Traffic Direction
- Concrete Removal
- Exist. Storm Sewer

DESIGN STRESSES

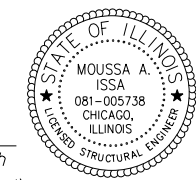
ORIGINAL CONSTRUCTION
 $f'_c = 3,500$ psi
 $f_y = 60,000$ psi (reinforcement)



ELEVATION

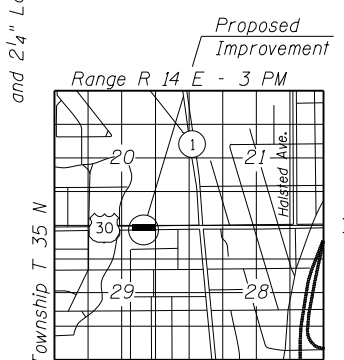


PLAN



Signed Moussa A. Issa
 Dr. Moussa A. Issa, S.E. Il. Lic. No. 081-005738
 Expires 11-30-2020

Date 12/07/2018 For Sheets S01 Thru S08



LOCATION SKETCH

GENERAL PLAN AND ELEVATION
US ROUTE 30 OVER THORN CREEK
F.A.P. 353 SECTION 42R-1-BR
COOK COUNTY
STATION 460+07.75
S.N. 016-2537

HBM
 ENGINEERING GROUP, LLC
 4415 WEST HARRISON ST.
 SUITE 231
 HILLSIDE, IL 60162
 PHONE: (708) 236-0900
 FAX: (708) 236-0901

DESIGNED - MI, SK	REVISOR -
CHECKED - MI	REVISOR -
DRAWN - SK	REVISOR -
CHECKED - MAI, MI	REVISOR -
DATE - 11/09/18	

STATE OF ILLINOIS
DEPARTMENT OF TRANSPORTATION

GENERAL PLAN AND ELEVATION
US 30 OVER THORN CREEK - STRUCTURE NO. 016-2537

SHEET NO. S01 OF S08 SHEETS

F.A.P. RTE.	SECTION	COUNTY	TOTAL SHEETS	SHEET NO.
353	42R-1-BR	COOK	22	7
CONTRACT NO. 60R75				
ILLINOIS FED. AID PROJECT				

GENERAL NOTES

1. Reinforcement bars designated (E) shall be epoxy coated.
2. Plan dimensions and details relative to existing plans are subject to nominal construction variations. The Contractor shall field verify existing dimensions and details affecting new construction and make necessary approved adjustments prior to construction or ordering of materials. Such variations shall not be cause for additional compensation for a change in scope of the work, however, the Contractor will be paid for the quantity actually furnished at the unit price bid for the work.
3. Existing reinforcement bars extending into the removal area shall be cleaned, straightened and incorporated into the new construction. Any reinforcement bars that are damaged during concrete removal shall be replaced with an approved bar splicer or anchorage system. Cost included with Concrete Removal.
4. Contractor shall not scale dimensions from the contract plans for construction purposes. Scales shown are for information only.
5. Repairs shown are based upon inspection date provided by IDOT D1 Maintenance at the time of plan preparation and are for bidding purposes only. Actual area to be repaired shall be determined by the Engineer in the field at the time of construction.
6. Concrete superstructure shall have a seven day minimum cure.
7. Synthetic fibers shall be added to the Bridge Design Latex Concrete Overlay, 2 1/4" inches, see Special Provisions.
8. All exposed concrete edges shall have a 3/4"x45° chamfer except where shown otherwise.

SCOPE OF WORK

1. Remove 3/4" of the existing bridge deck using scarification.
2. Perform deck slab repairs.
3. Remove/eliminate the longitudinal expansion joint and reconstruct the removed portion of the deck.
4. Apply a 2 1/4" bridge deck latex concrete overlay to the existing remaining bridge deck slab.
5. Perform Bridge Deck Grooving for the 2 1/4" Bridge Deck Latex Concrete Overlay.
6. Remove 1/2" of the Existing HMA Surface on East and West Approaches and Apply 2" new Hot-Mix-Asphalt overlay.
7. Perform bridge Rail Removal and Parapet Modification at the northeast and southwest corners of bridge.
8. Install Traffic Barrier Terminal sections at northeast and southwest corners of bridge.
9. Apply Protective Coat on the curbs, parapets and sidewalks.
10. Perform structural concrete repairs on the East Abutment, Pier 1 and existing concrete parapets.
11. Repaint pavement markings on the top of deck.

INDEX OF SHEETS

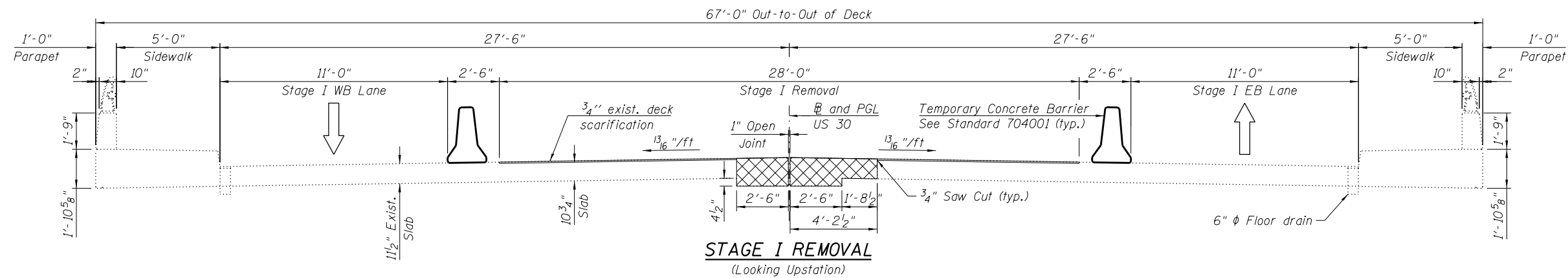
- S01 General Plan and Elevation
- S02 General Notes, Index of Sheets and Total Bill of Material
- S03 Stage Construction
- S04 Temporary Concrete Barrier
- S05 Deck Repair Plan
- S06 Longitudinal Joint Removal and Deck Reconstruction
- S07 Parapet Partial Elevation and Retrofit Details
- S08 Substructure Repairs

ABBREVIATIONS

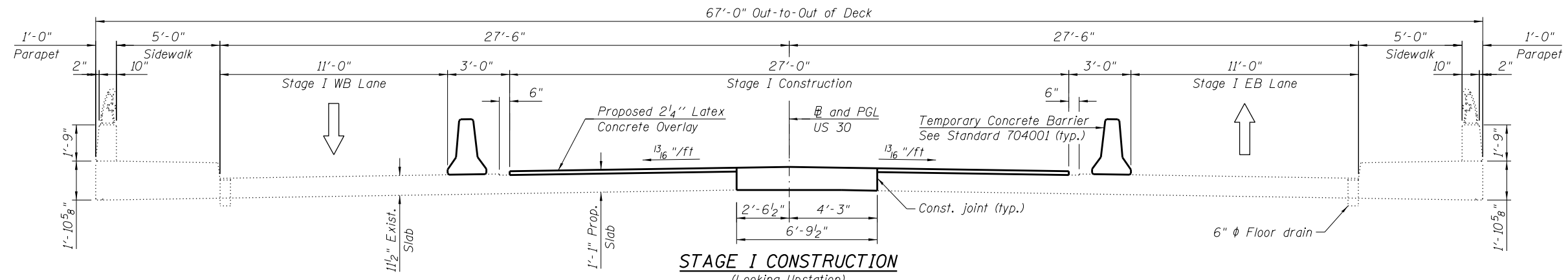
Abut.	Abutment	Jt.	Joint
SN	Structure Number	PGL	Profile Grade Line
Bk.	Back	Prop.	Proposed
Brg.	Bearing	Rt.	Right
E. Abut.	East Abutment	Sta.	Station
EB	East Bound	Typ.	Typical
Elev.	Elevation	W. Abut.	West Abutment
Exist.	Existing	WB	West Bound

TOTAL BILL OF MATERIAL

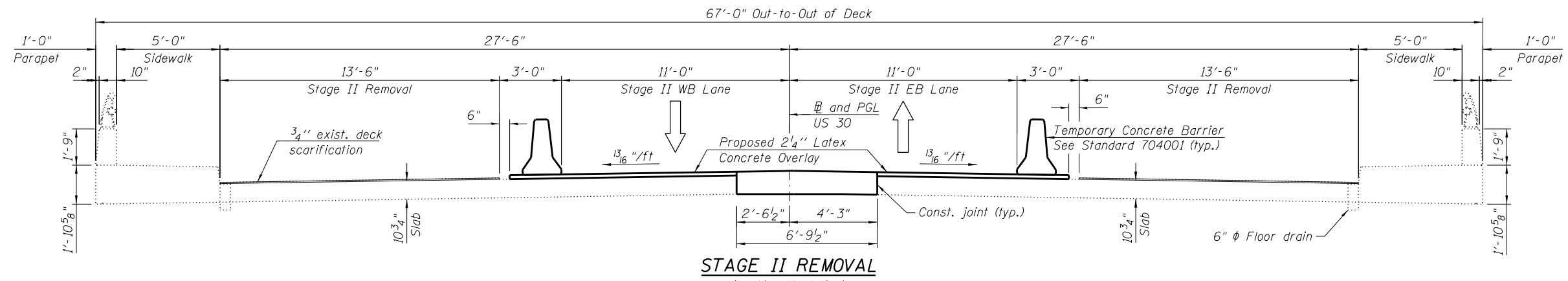
ITEM	UNIT	SUPER	SUB	TOTAL
Concrete Removal	Cu. Yd.	21.2	-	21.2
Bridge Rail Removal	Foot	15	-	15
Concrete Superstructure	Cu. Yd.	20.0	-	20.0
Bridge Deck Grooving	Sq. Yd.	387	-	387
Protective Coat	Sq. Yd.	162	-	162
Reinforcement Bars, Epoxy Coated	Pound	8,830	-	8,830
Approach Slab Repair (Partial Depth)	Sq. Yd.	12	-	12
Bridge Deck Latex Concrete Overlay, 2 1/4 Inches	Sq. Yd.	339	-	339
Bridge Deck Scarification, 3/4 Inch	Sq. Yd.	339	-	339
Structural Repair of Concrete (Depth Equal to or Less Than 5 Inches)	Sq. Ft.	11	14	25
Structural Repair of Concrete (Depth Greater Than 5 Inches)	Sq. Ft.	-	50	50
Deck Slab Repair (Full Depth, Type I)	Sq. Yd.	1	-	1
Deck Slab Repair (Full Depth, Type II)	Sq. Yd.	25	-	25



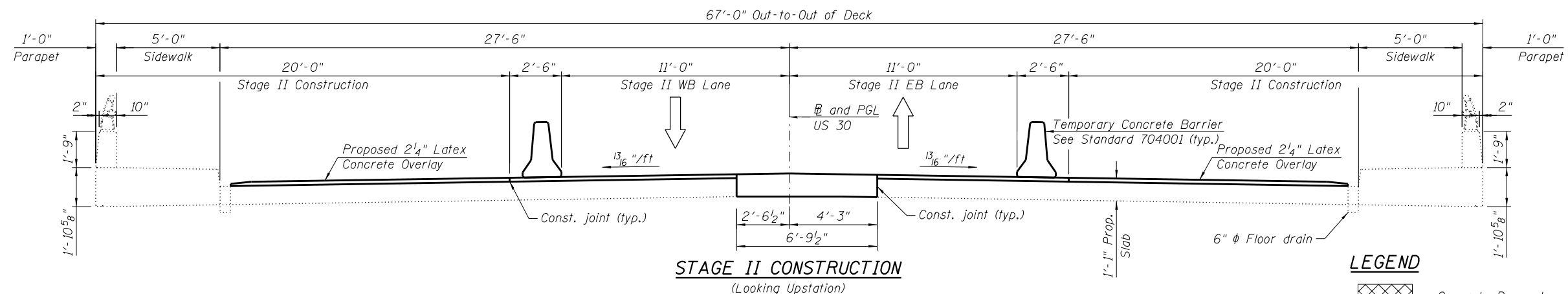
STAGE I REMOVAL
(Looking Upstation)



STAGE I CONSTRUCTION
(Looking Upstation)



STAGE II REMOVAL
(Looking Upstation)



STAGE II CONSTRUCTION
(Looking Upstation)

LEGEND

Concrete Removal

STAGE I REMOVAL

1. Install temporary concrete barriers as shown to locate traffic lanes on the south and north sides of the existing structure.
2. Remove 3/4" of bridge deck slab using scarification.
3. Remove areas of existing deck for slab repairs.
4. Remove/eliminate the longitudinal expansion joint.
5. Remove 1/2" of the existing HMA Surface on East and West Approaches.

STAGE I CONSTRUCTION

The following construction items will be performed within the limits of Stage I Construction:

1. Perform deck slab repairs.
2. Reconstruct the deck slab within limits of longitudinal joint removal.
3. Apply 2 1/4" Bridge Deck Latex Concrete overlay to bridge deck slab.
4. Perform Bridge Deck Grooving for the bridge deck latex concrete overlay.
5. Repaint pavement markings on the top of deck.

STAGE II REMOVAL

1. Install temporary concrete barriers as shown to locate traffic lanes on the south and north sides of the existing structure.
2. Remove 3/4" of bridge deck slab using scarification.
3. Remove areas of existing deck for deck slab repairs and perform partial bridge rail removal as shown in the plans.
4. Remove 1/2" of the existing HMA Surface on East and West Approaches.

STAGE II CONSTRUCTION

The following construction items will be performed within the limits of Stage II Construction:

1. Perform full depth deck slab repairs.
2. Apply 2 1/4" Bridge Deck Latex Concrete Overlay to bridge deck slab.
3. Perform Bridge Deck Grooving for the bridge deck latex concrete overlay area.
4. Perform parapet modification and install Traffic Barrier Terminal, Type 6 at northeast and southwest corners of bridge.
5. Apply Protective Coat for the curbs, parapets and sidewalks.
6. Repaint pavement markings on the top of deck.

NOTES:

1. For Hot-Mix-Asphalt Overlay on the approaches, see roadway plans for details.

HBM
ENGINEERING GROUP, LLC
CONSULTING & DESIGN
INSPECTION & TESTING
RESEARCH & TESTING

4415 WEST HARRISON ST.
SUITE 231
MILLSIDE, IL 60162
PHONE: (708) 236-0900
FAX: (708) 236-0901

DESIGNED - MI, SK	REVISED -
CHECKED - MI	REVISED -
DRAWN - SK	REVISED -
CHECKED - MAI, MI	REVISED -

STATE OF ILLINOIS
DEPARTMENT OF TRANSPORTATION

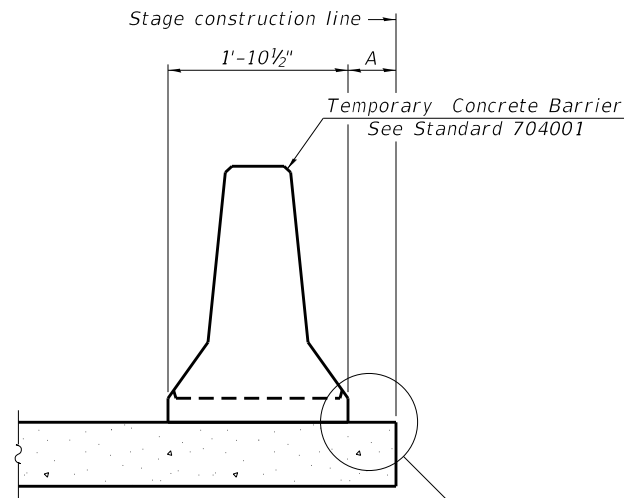
STAGE CONSTRUCTION
US 30 OVER THORN CREEK - STRUCTURE NO. 016-2537

SHEET NO. S03 OF S08 SHEETS

F.A.P. RTE.	SECTION	COUNTY	TOTAL SHEETS	SHEET NO.
353	42R-1-BR	COOK	22	9
CONTRACT NO. 60R75				

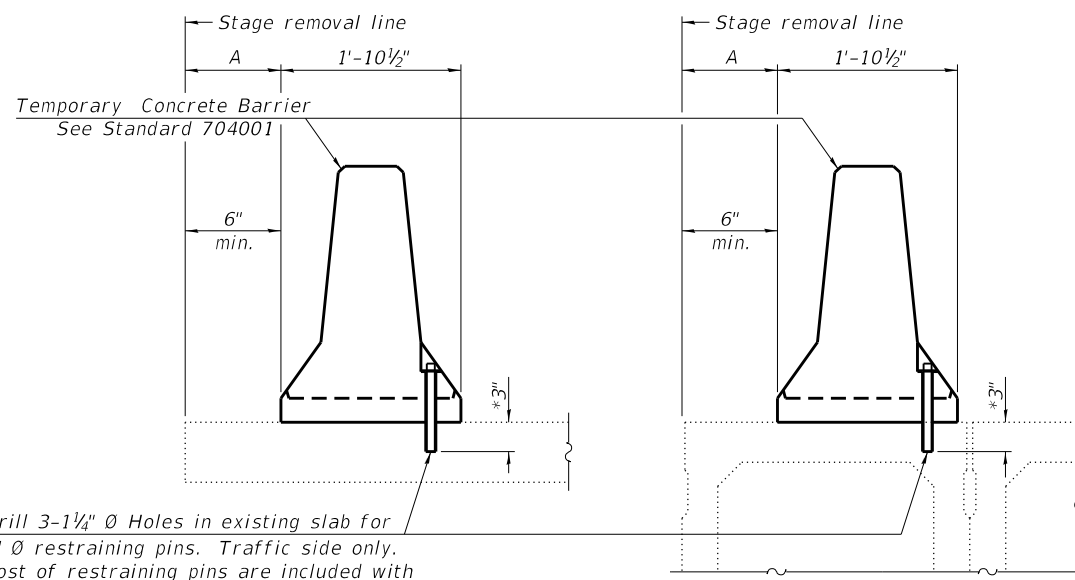
ILLINOIS FED. AID PROJECT

DATE - 11/09/18



When "A" is 3'-1" or less, the temporary concrete barrier shall be restrained to the new slab according to Detail I, II or III. No restraint is required when "A" is greater than 3'-1".

NEW SLAB OR NEW DECK BEAM

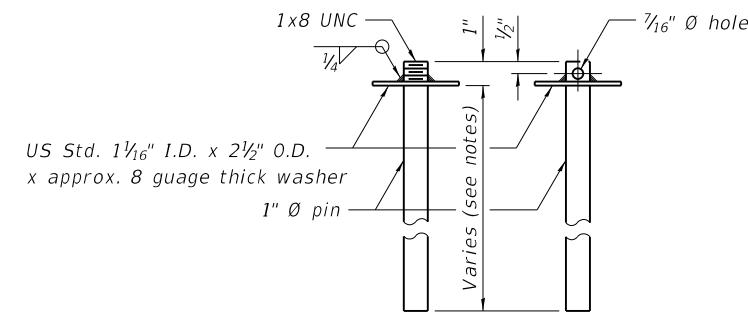


Drill 3-1/4" Ø Holes in existing slab for 1" Ø restraining pins. Traffic side only. Cost of restraining pins are included with Temporary Concrete Barrier. No restraint is required when "A" is greater than 3'-1".

EXISTING SLAB

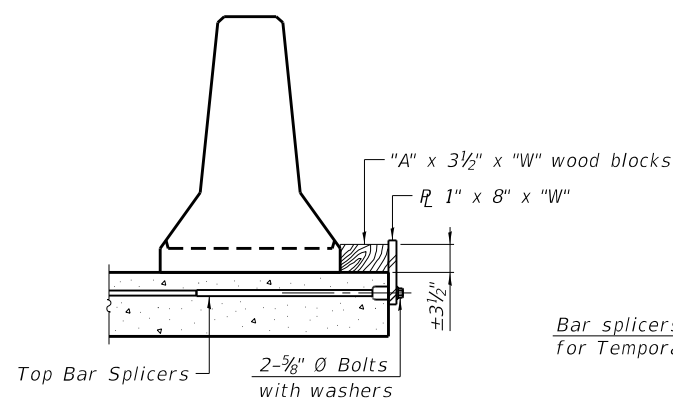
* When hot-mix asphalt wearing surface is present, embedment shall be 3" plus the wearing surface depth.

EXISTING DECK BEAM

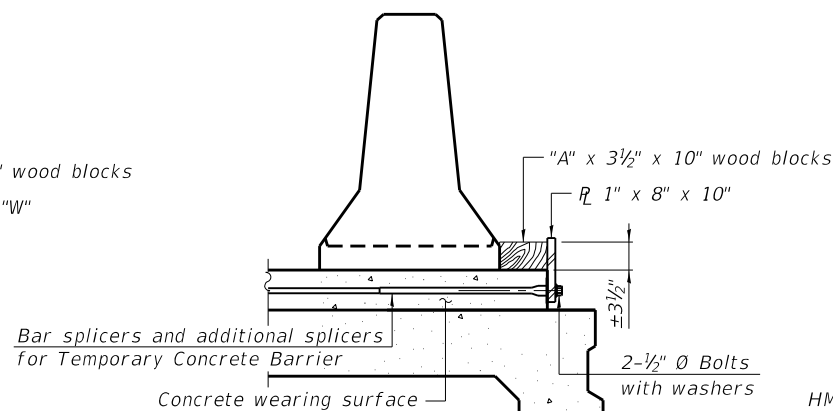


RESTRAINING PIN

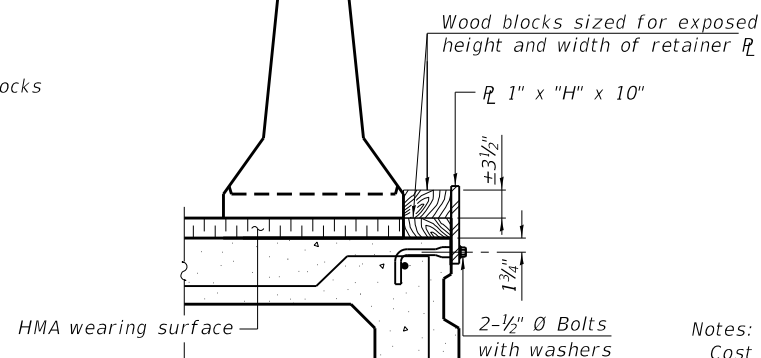
SECTIONS THRU SLAB OR DECK BEAM



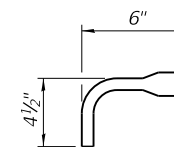
DETAIL I



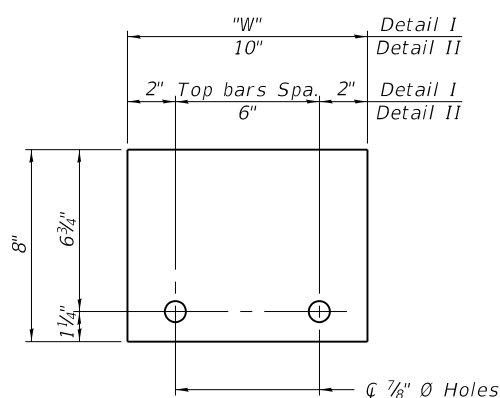
DETAIL II



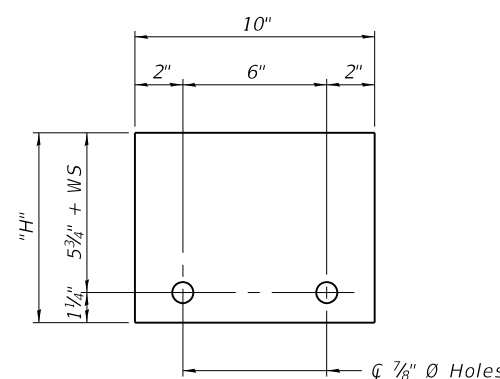
DETAIL III



BAR SPLICER FOR #4 BAR - DETAIL III



STEEL RETAINER R 1" x 8" x "W"
(Detail I and II)



STEEL RETAINER R 1" x "H" x 10"
(Detail III)

Notes:

Cost of retainer assembly is included with Temporary Concrete Barrier. A retainer assembly shall be located at the approximate center of each temporary concrete barrier.

The retainer plate shall not be removed until the concrete on the adjacent stage is ready to be poured. For Detail III applications the retainer plate shall not be removed until just prior to placing the adjacent beam.

When the 'A' dimension is less than 1 1/2', the wood block shall be omitted and the barrier shall be placed in direct contact with the steel retainer plate. For deck beam applications the minimum required 'A' distance is 6' to accommodate the shear key clamping device.

Detail I - Installation for a new bridge deck or bridge slab.

Detail II - Installation for a new deck beam with an initial concrete wearing surface. Additional bar splicers shall be provided at 6'-0" centers and paired with the bar splicers of the concrete wearing surface reinforcement to accommodate the installation of the retainer assemblies. The cost of the additional bar splicers is included with the concrete wearing surface.

Detail III - Installation for a new deck beam with no initial wearing surface or with an initial hot-mix asphalt (HMA) wearing surface present. The deck beam directly beneath the temporary concrete barrier shall be fabricated with bar splicer inserts in the side of the beam, as detailed, to accommodate the installation of the retainer assemblies. A pair of bar splicers, 6" apart, shall be placed at 6'-0" centers along the length of the beam. The cost of the bar splicers is included with the deck beam.

R-27

8-11-2017

HBM
ENGINEERING GROUP, LLC
CONSULTING & DESIGN
INSPECTION & TESTING
RESEARCH & TESTING

4415 WEST HARRISON ST.
SUITE 231
HILLSDALE, IL 60162
PHONE: (708) 236-0900
FAX: (708) 236-0901

DATE - 11/09/18

DESIGNED - SK
CHECKED - MI
DRAWN - SK
CHECKED - MAI

REVISED -
REVISED -
REVISED -
REVISED -

STATE OF ILLINOIS
DEPARTMENT OF TRANSPORTATION

TEMPORARY CONCRETE BARRIER
US 30 OVER THORN CREEK - STRUCTURE NO. 016-2537

SHEET NO. S04 OF S08 SHEETS

F.A.P. RTE.	SECTION	COUNTY	TOTAL SHEETS	SHEET NO.
353	42R-1-BR	COOK	22	10
CONTRACT NO. 60R75				

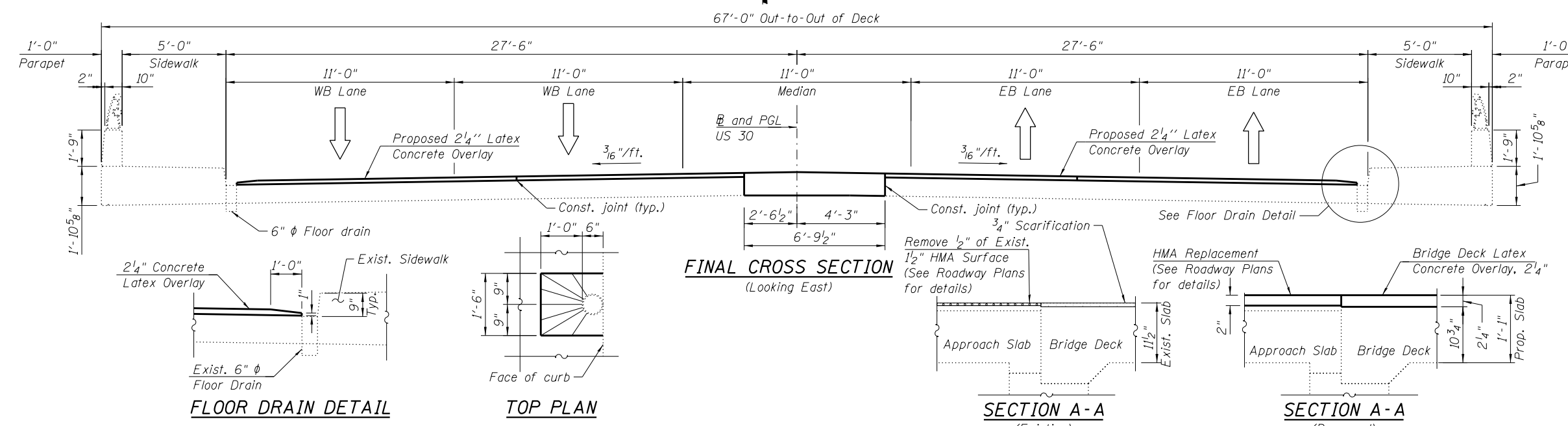
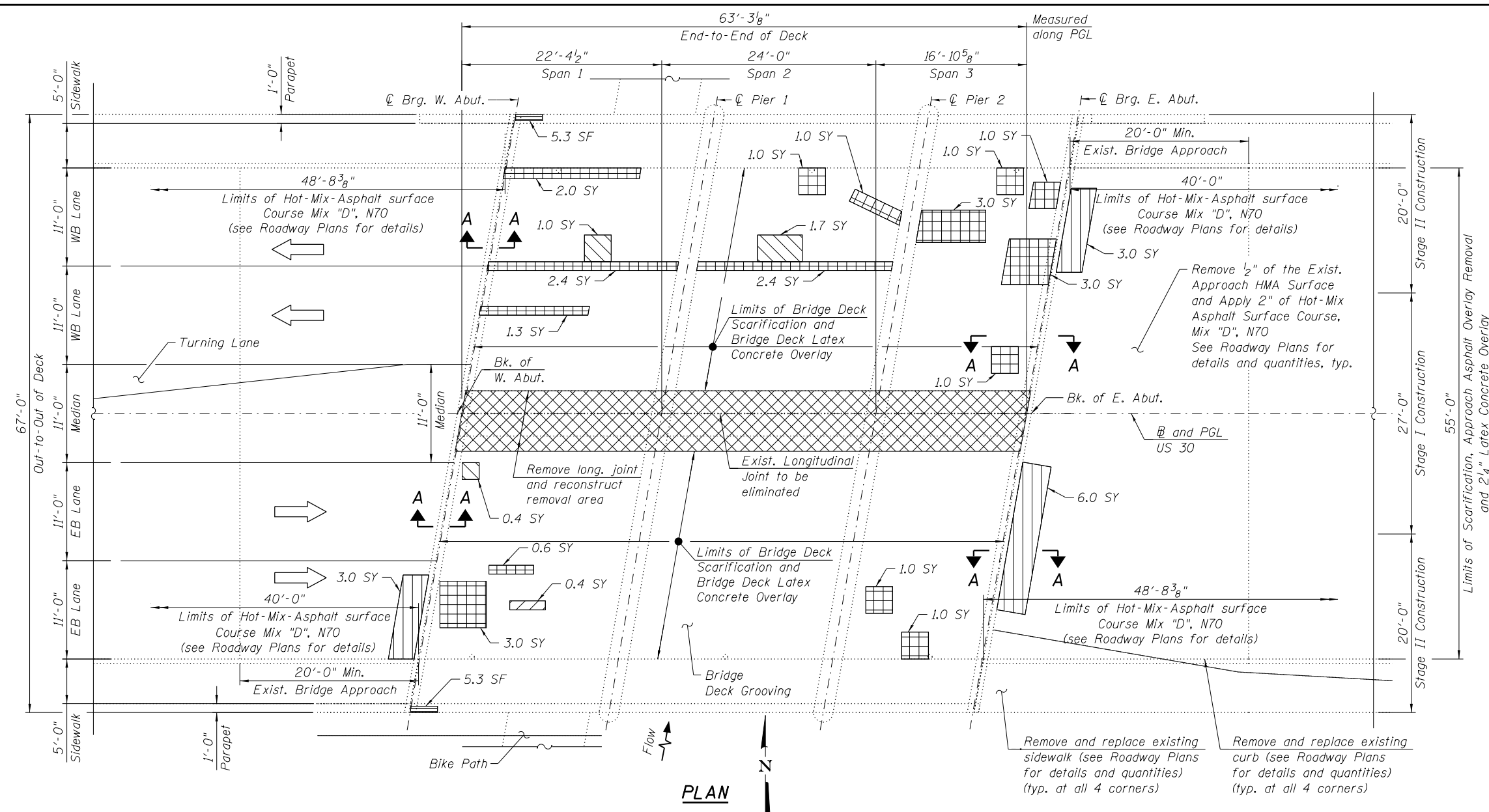
ILLINOIS FED. AID PROJECT

BILL OF MATERIAL

ITEM	UNIT	QUANTITY
Bridge Deck Grooving	Sq. Yd.	387
Protective Coat	Sq. Yd.	154
Approach Slab Repair (Partial Depth)	Sq. Yd.	12
Bridge Deck Latex Concrete Overlay, 2 1/4 Inches	Sq. Yd.	339
Bridge Deck Scarification, 3/4 Inch	Sq. Yd.	339
Structural Repair of Concrete (Depth Equal to or Less Than 5 Inches)	Sq. Ft.	11
Deck Slab Repair (Full Depth, Type I)	Sq. Yd.	1
Deck Slab Repair (Full Depth, Type II)	Sq. Yd.	25

NOTES

- For Longitudinal Joint Removal and Reconstruction, See Sheet S06.
- Perform Bridge Deck Grooving for the bridge deck latex concrete overlay.
- Protective Coat shall be applied to top and inside faces of parapets, curb, sidewalks and new concrete areas at Longitudinal Joint Closure.



LEGEND

- Deck Slab Repair (Partial) (Estimated 4 Sq. Yd.)
- Deck Slab Repair (Full Depth, Type I)
- Deck Slab Repair (Full Depth, Type II)
- Concrete Removal
- Structural Repair of Concrete (Depth Equal to or Less Than 5")
- Approach Slab Repair (Partial Depth)
- HMA Removal
- 3/4" Scarification
- Traffic Direction

* Areas of Deck Slab Repair (Partial) are provided for information only and shall be included in the cost of Bridge Deck Latex Concrete Overlay, 2 1/4".

HBM
ENGINEERING GROUP, LLC
CONSULTING & DESIGN
INSPECTION & TESTING
RESEARCH & TESTING

4415 WEST HARRISON ST.
SUITE 231
HILLSIDE, IL 60162
PHONE: (708) 236-0900
FAX: (708) 236-0901

DESIGNED - JJS, LAB
CHECKED - MI
DRAWN - LAB
DATE - 11/09/18

REVISD -
REVISD -
REVISD -
REVISD -

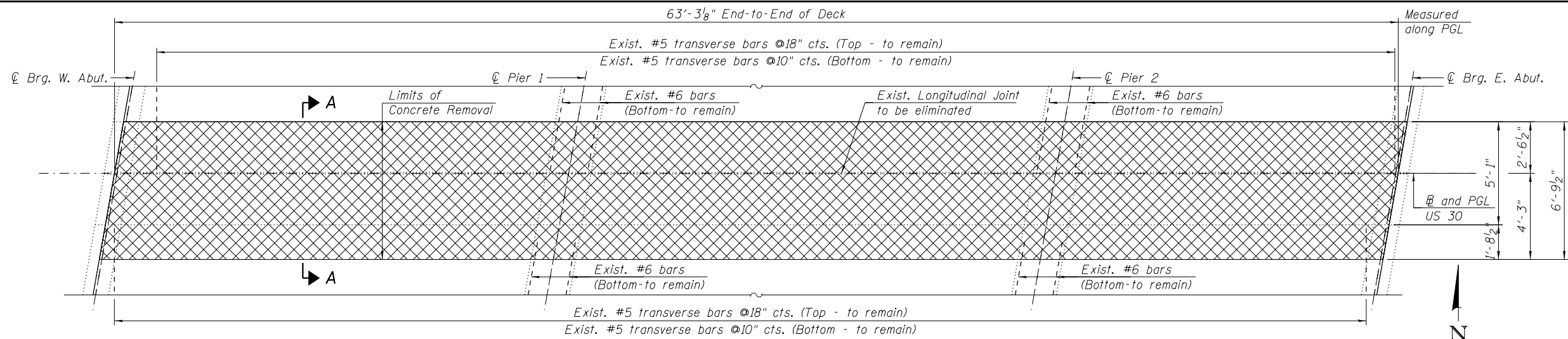
STATE OF ILLINOIS
DEPARTMENT OF TRANSPORTATION

DECK REPAIR PLAN
US 30 OVER THORN CREEK - STRUCTURE NO. 016-2537

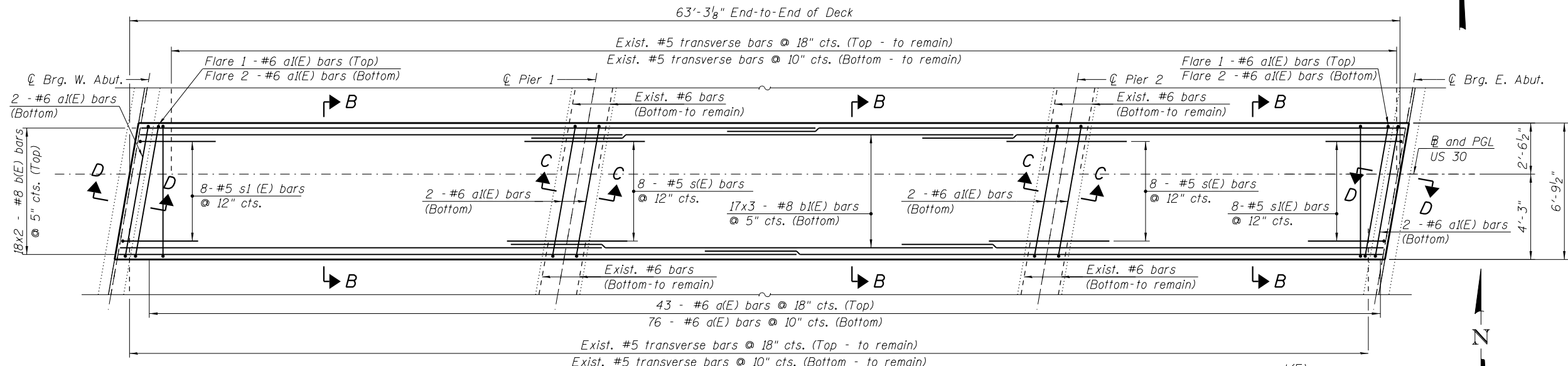
SHEET NO. S05 OF S08 SHEETS

F.A.P. RTE.	SECTION	COUNTY	TOTAL SHEETS	SHEET NO.
353	42R-1-BR	COOK	22	11
CONTRACT NO. 60R75				

ILLINOIS FED. AID PROJECT

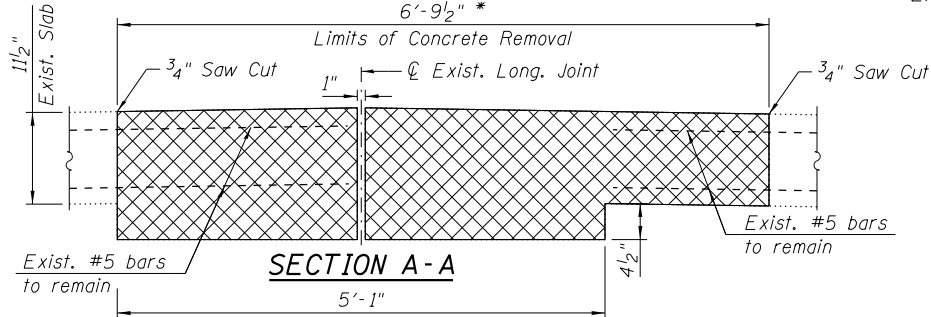


LONGITUDINAL JOINT REMOVAL PLAN

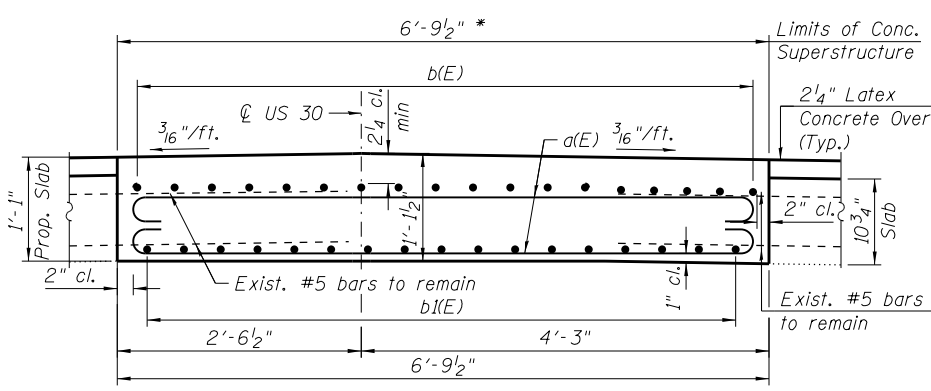


DECK RECONSTRUCTION PLAN

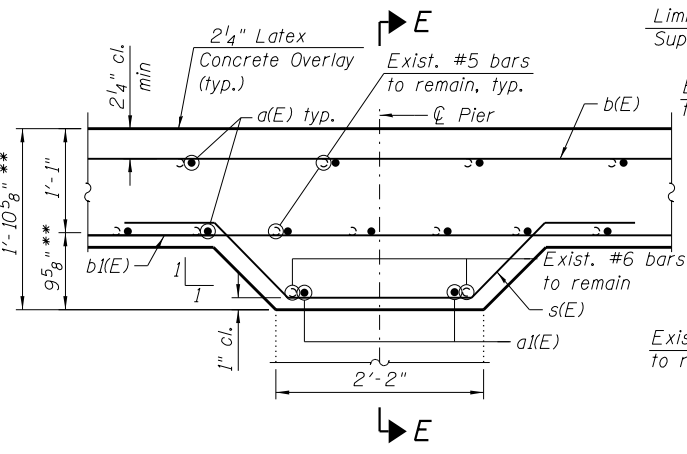
* Dimension measured perpendicular to ϕ US 30
 ** Verify in field



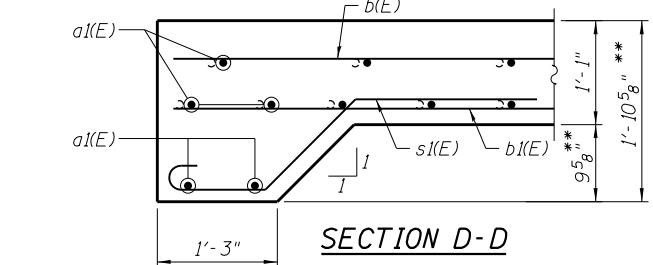
SECTION A-A



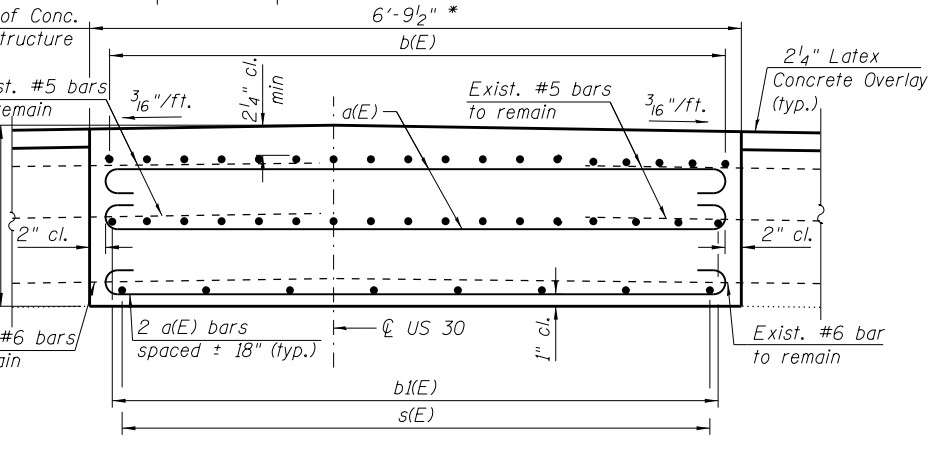
SECTION B-B



SECTION C-C



SECTION D-D

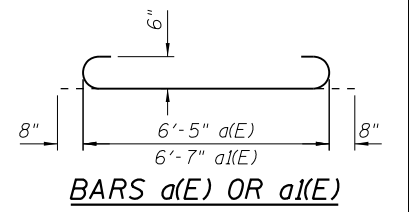


SECTION E-E

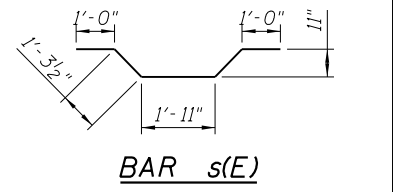
BILL OF MATERIAL

Bar	No.	Size	Length	Shape
a(E)	119	#6	7'-9"	
a(E)	14	#6	7'-11"	
b(E)	36	#8	35'-1"	
b(E)	51	#8	25'-9"	
s(E)	16	#5	6'-6"	
s(E)	16	#5	5'-0"	
Concrete Removal			Cu. Yd.	21.2
Concrete Superstructure			Cu. Yd.	19.1
Reinforcement Bars, Epoxy Coated			Pound	8,630

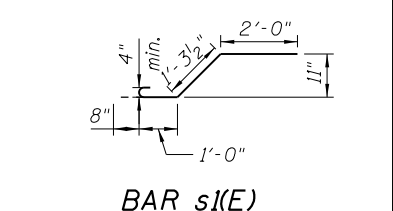
Reinforcement bars designated (E) shall be epoxy coated.



BARS a(E) OR a(E)



BAR s(E)



BAR s(E)

LAP SPLICES

Bar	Lap
#8	7'-2"

LEGEND



HBM
 ENGINEERING GROUP, LLC
 CONSULTING & DESIGN
 INSPECTION & TESTING
 RESEARCH & TESTING

4415 WEST HARRISON ST.
 SUITE 231
 HILLSIDE, IL 60162
 PHONE: (708) 236-0900
 FAX: (708) 236-0901

DESIGNED -	JJS	REVISED -	
CHECKED -	MI	REVISED -	
DRAWN -	SK	REVISED -	
CHECKED -	MAI, MI	REVISED -	

STATE OF ILLINOIS
 DEPARTMENT OF TRANSPORTATION

LONGITUDINAL JOINT REMOVAL AND DECK RECONSTRUCTION
 US 30 OVER THORN CREEK - STRUCTURE NO. 016-2537

F.A.P. RTE.	SECTION	COUNTY	TOTAL SHEETS	SHEET NO.
353	42R-1-BR	COOK	22	12

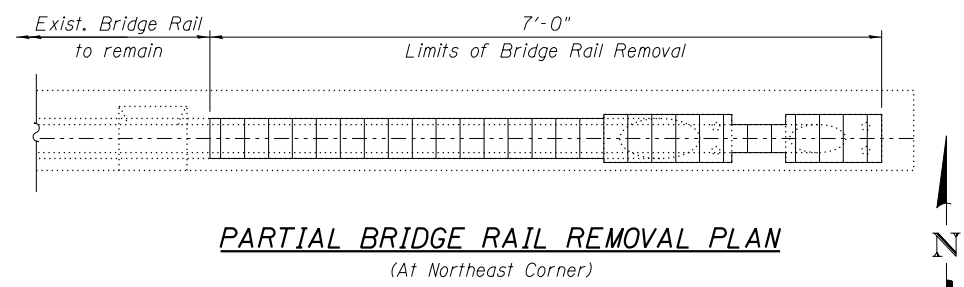
SHEET NO. 506 OF 508 SHEETS

ILLINOIS FED. AID PROJECT

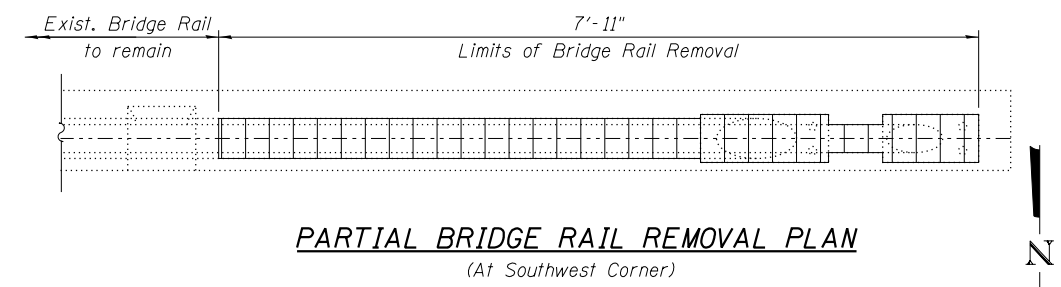
DATE - 11/09/18

BILL OF MATERIAL

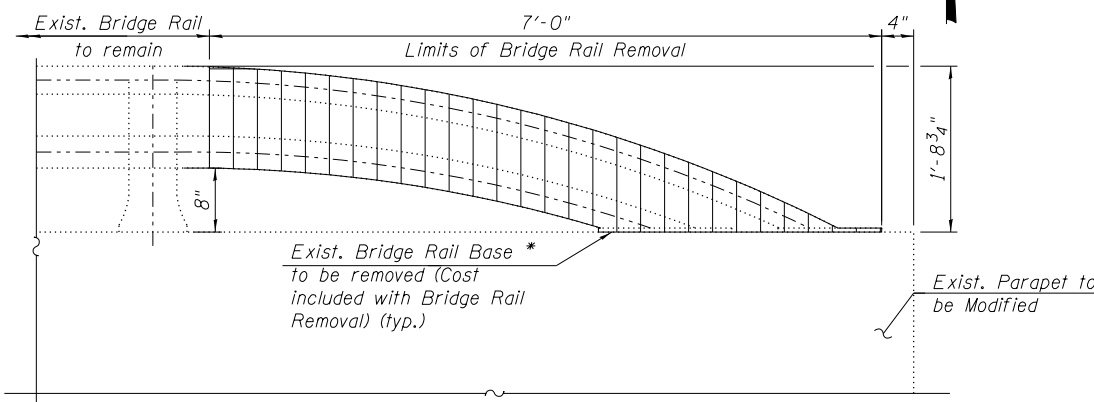
Bar	No.	Size	Length	Shape
h(E)	6	#5	7'-0"	—
h(I(E))	6	#5	7'-11"	—
u(E)	13	#4	4'-6"	⊏
v(E)	19	#5	3'-1"	—
Bridge Rail Removal			Foot	15
Concrete Superstructure			Cu. Yd.	0.9
Protective Coat			Sq. Yd.	8
Reinforcement Bars, Epoxy Coated			Pound	200



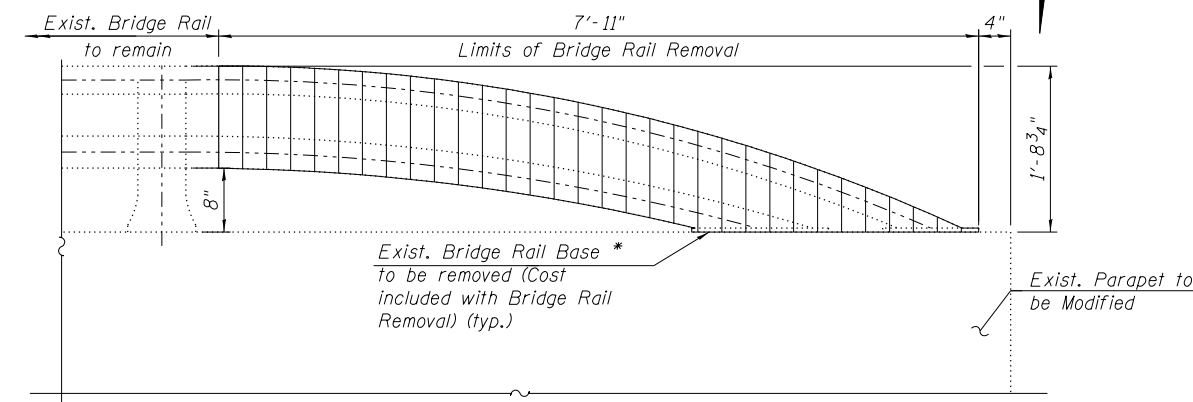
PARTIAL BRIDGE RAIL REMOVAL PLAN
(At Northeast Corner)



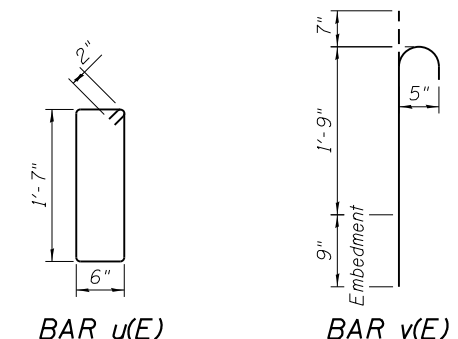
PARTIAL BRIDGE RAIL REMOVAL PLAN
(At Southwest Corner)



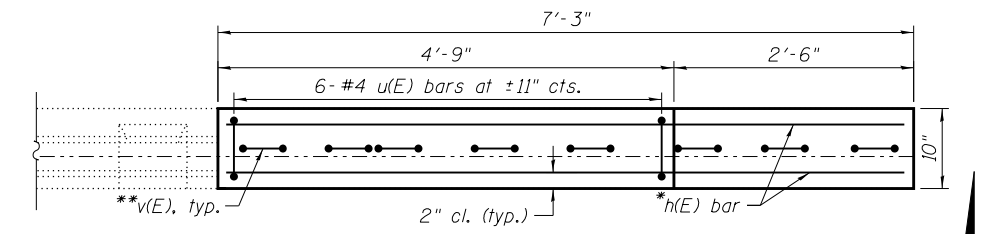
PARTIAL BRIDGE RAIL REMOVAL ELEVATION
(At Northeast Corner)



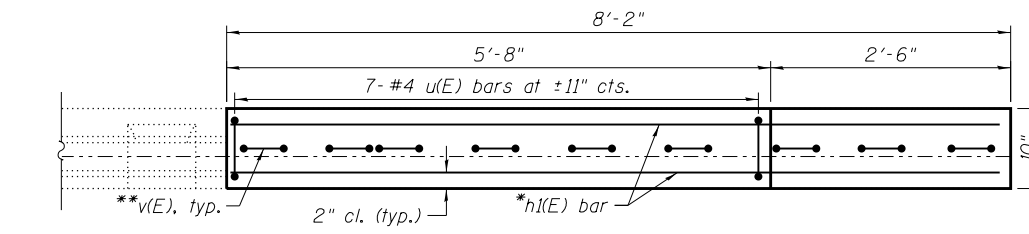
PARTIAL BRIDGE RAIL REMOVAL ELEVATION
(At Southwest Corner)



BAR u(E) **BAR v(E)**



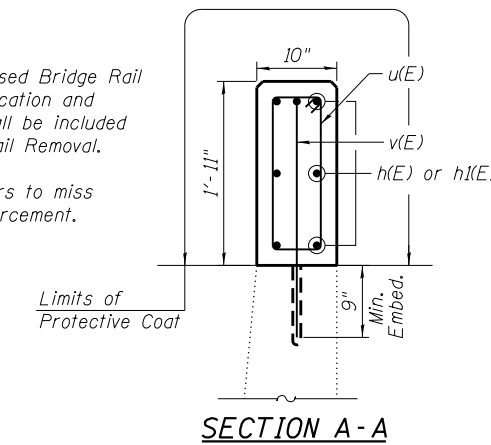
PARTIAL PARAPET PLAN
(At Northeast Corner)



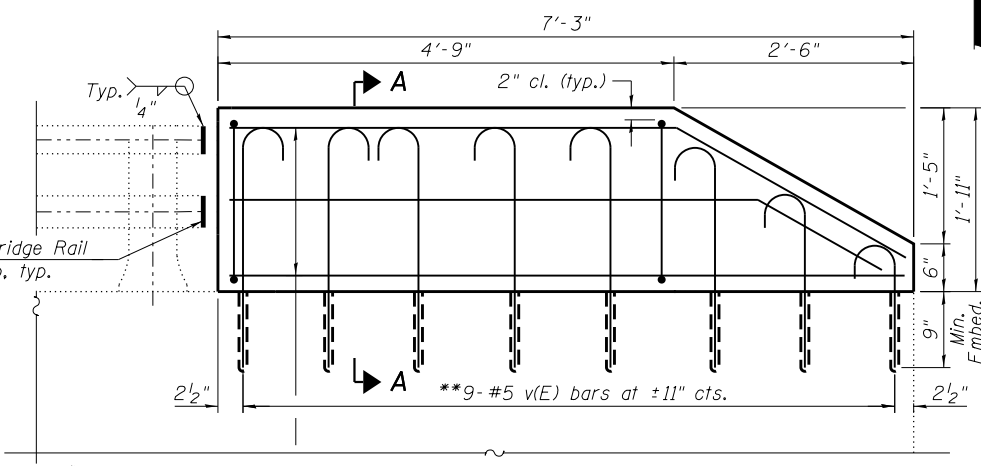
PARTIAL PARAPET PLAN
(At Southwest Corner)

NOTES:

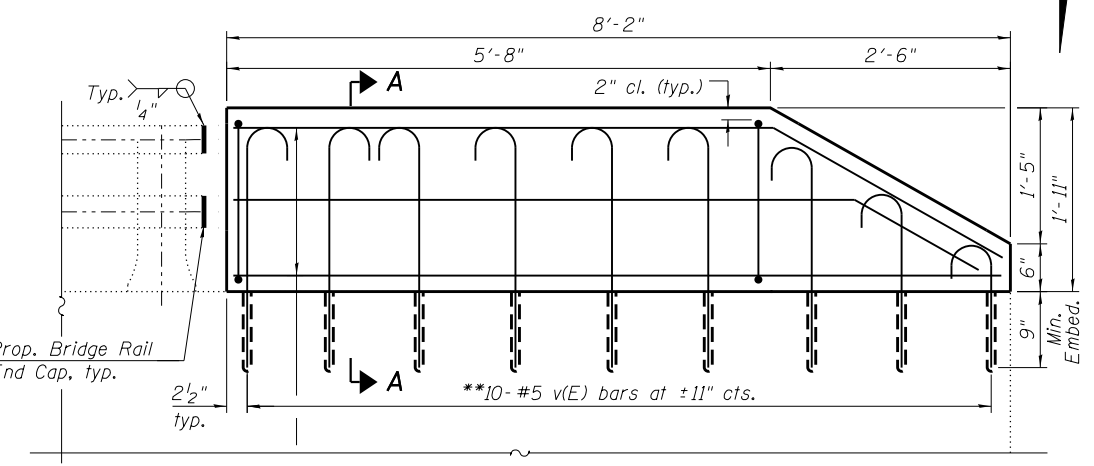
- Cost of Proposed Bridge Rail End Cap fabrication and installation shall be included with Bridge Rail Removal.
- Space v(E) bars to miss existing reinforcement.



SECTION A-A

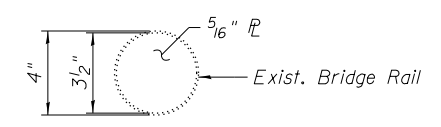


PARTIAL PARAPET ELEVATION
(At Northeast Corner)

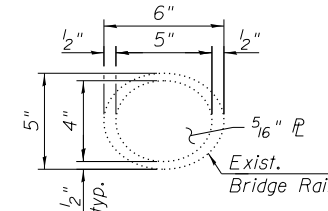


PARTIAL PARAPET ELEVATION
(At Southwest Corner)

ALUMINUM RAILING, TYPE L END CAP DETAIL (Top Rail)



ALUMINUM RAILING, TYPE L END CAP DETAIL (Bottom Rail)



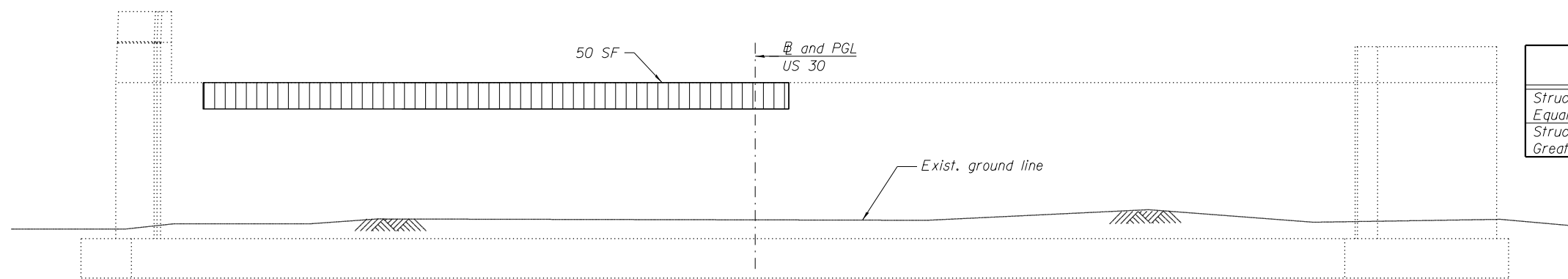
LEGEND



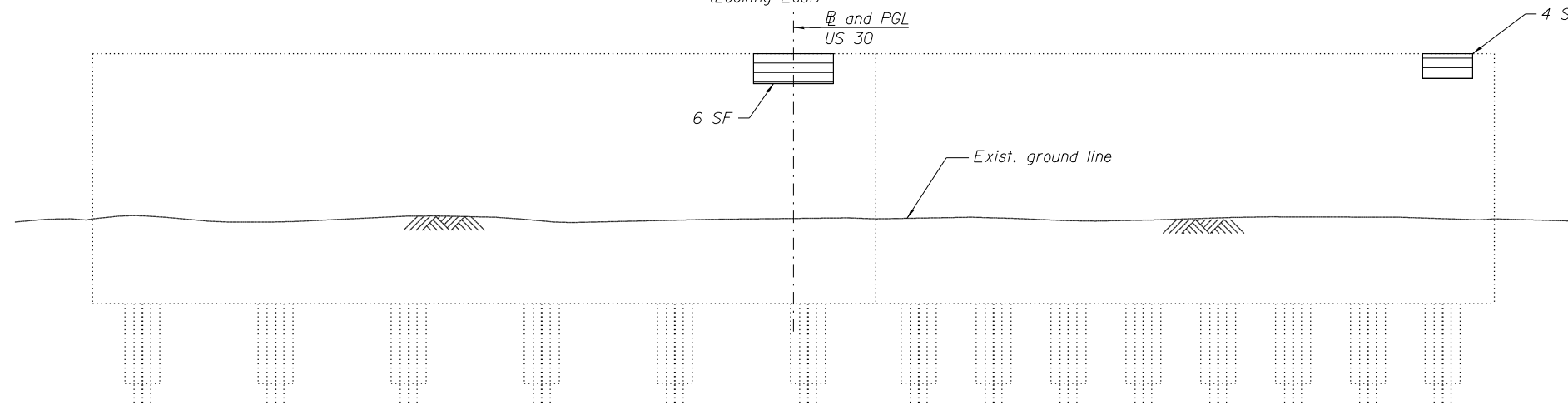
*Bend in field to fit
**Cut in field to fit

BILL OF MATERIAL

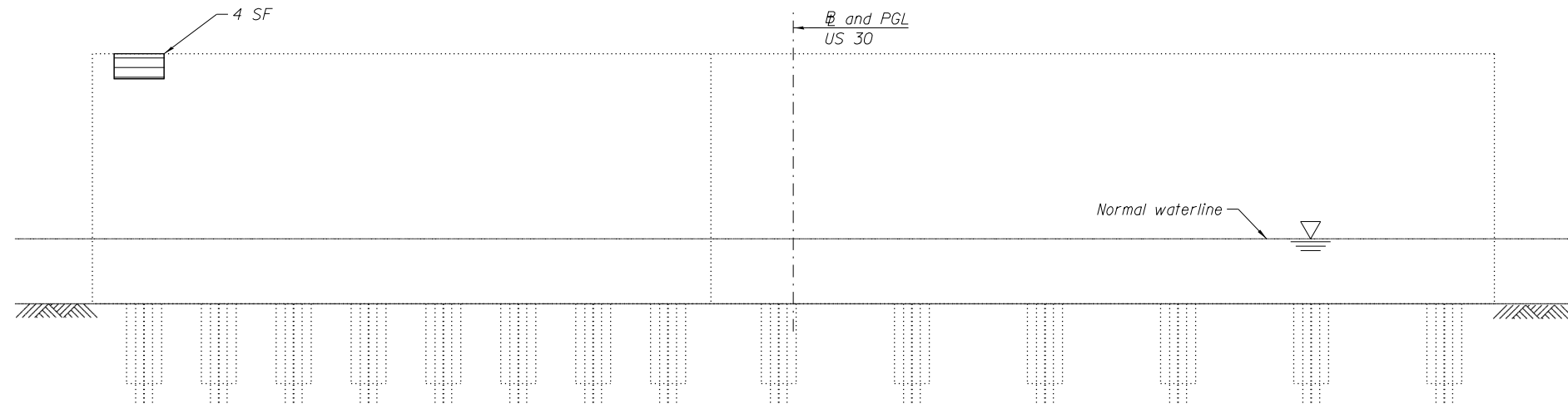
ITEM	UNIT	QUANTITY
Structural Repair of Concrete (Depth Equal to or Less Than 5 Inches)	Sq. Ft.	14
Structural Repair of Concrete (Depth Greater than 5 Inches)	Sq. Ft.	50



EAST ABUTMENT ELEVATION
(Looking East)



PIER 1 ELEVATION
(Looking East)



PIER 1 ELEVATION
(Looking West)

NOTES:

1. Quantities and limits shown are estimated for bidding purposes only. The actual areas to be repaired and the type(s) of repairs to be used will be determined by the Engineer in the field at the time of construction.

LEGEND

- Structural Repair of Concrete (Depth Greater Than 5 Inches)
- Structural Repair of Concrete (Depth Equal to or Less Than 5 Inches)

HBM
ENGINEERING GROUP, LLC
CONSULTING & DESIGN
INSPECTION & TESTING
RESEARCH & TESTING

4415 WEST HARRISON ST.
SUITE 231
HILLSIDE, IL 60162
PHONE: (708) 236-0900
FAX: (708) 236-0901

DESIGNED - JJS, WM
CHECKED - MI
DRAWN - WM
CHECKED - MAI, MI

REVISED -
REVISED -
REVISED -
REVISED -

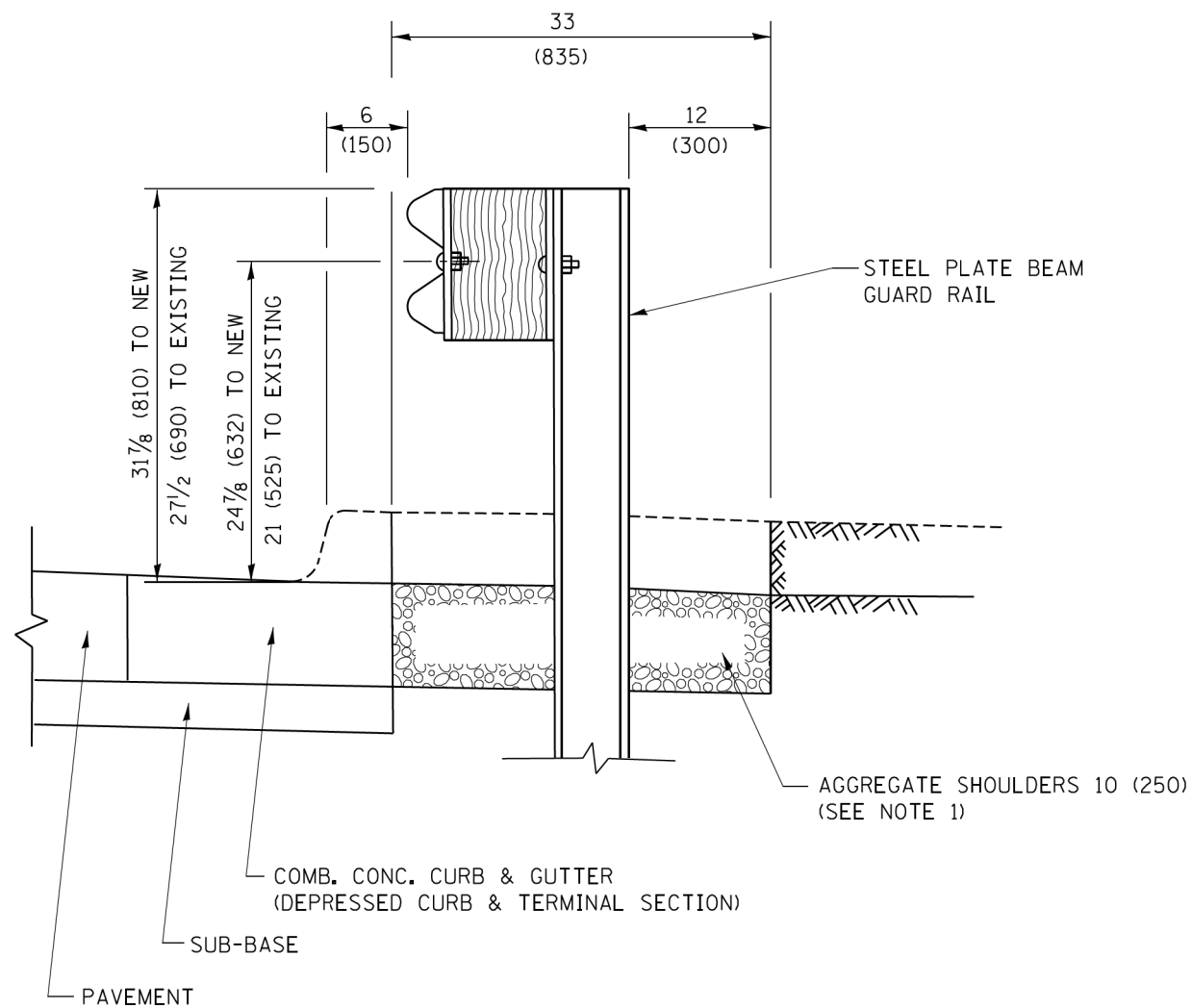
**STATE OF ILLINOIS
DEPARTMENT OF TRANSPORTATION**

**SUBSTRUCTURE REPAIRS
US 30 OVER THORN CREEK - STRUCTURE NO. 016-2537**

SHEET NO. 508 OF 508 SHEETS

F.A.P. RTE.	SECTION	COUNTY	TOTAL SHEETS	SHEET NO.
353	42R-1-BR	COOK	22	14
CONTRACT NO. 60R75				
ILLINOIS FED. AID PROJECT				

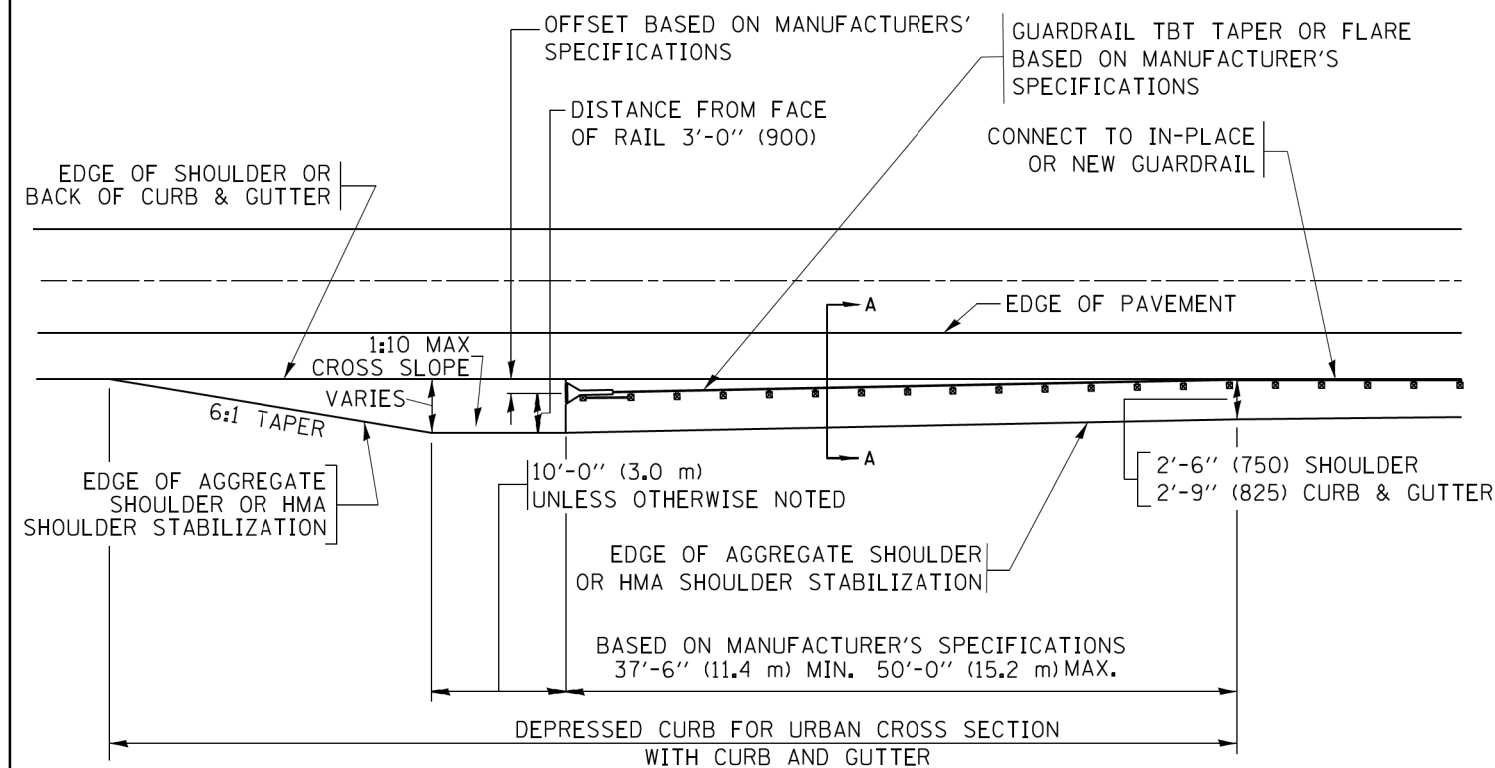
DATE - 11/09/18



SECTION A-A

- NOTES:
1. THE AGGREGATE SHOULDER, 10 (250) OR HMA SHOULDER, 6 (150) (IF REQUIRED) SHALL EXTEND UNDER THE TRAFFIC BARRIER TERMINAL.
 2. "EXISTING" GUARDRAIL REFERS TO CONNECTING TERMINAL SECTION TO GUARD RAILING PRIOR TO THE MIDWEST GUARDRAIL SYSTEM.
 3. THE CONTRACTOR SHALL VERIFY THE TYPE/HEIGHT OF GUARDRAIL IN-PLACE BEFORE ORDERING THE NEW TERMINAL SECTION. COST INCLUDED WITH THE COST OF THE TERMINAL. THE TERMINAL SECTION HEIGHT TO BE PLACED MUST MATCH THE HEIGHT OF THE IN-PLACE GUARDRAIL.

**DETAILS FOR STEEL PLATE BEAM
GUARD RAIL ADJACENT TO CURB AND GUTTER
[FOR ROADWAY SPEED 35 MPH (60 kmh) TO 45 MPH (70 kmh)]**



**DEPRESSED CURB AND GUTTER AND
SHOULDER TREATMENT AT TBT TY. 1 SPL.**

AGGREGATE SHOULDER, 10 (250) WILL BE PAID ACCORDING TO SECTION 481.

HMA SHOULDERS 6 (150) (IF REQUIRED) WILL BE PAID ACCORDING TO SECTION 482.

COMB. CONC. C&G, STEEL PLATE BEAM GUARD RAIL AND TRAFFIC BARRIER TERMINAL, OF THE TYPE SPECIFIED WILL BE PAID FOR SEPARATELY.

TBT = TRAFFIC BARRIER TERMINAL
ALL DIMENSIONS ARE IN INCHES (MILLIMETERS)
UNLESS OTHERWISE SHOWN.

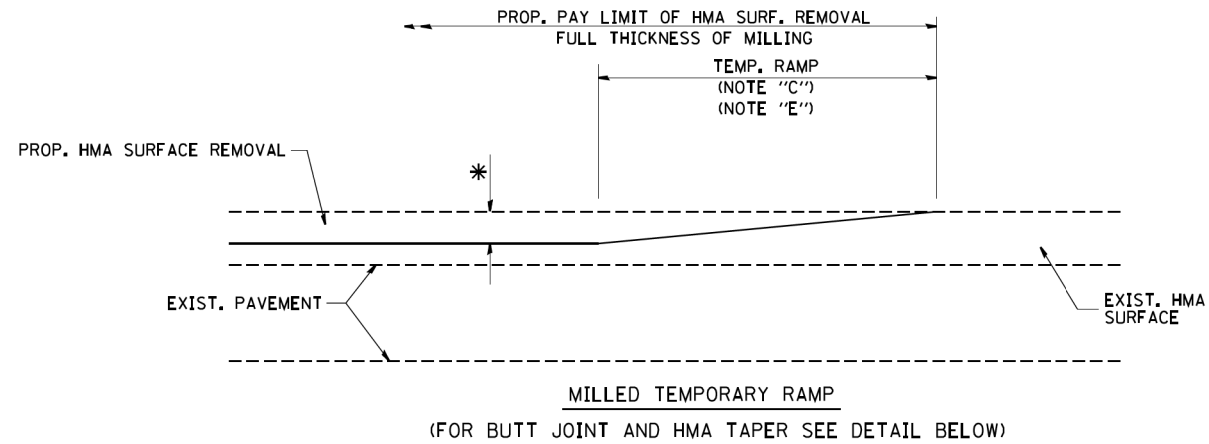
FILE NAME =	USER NAME = drivekosgn	DESIGNED - M. DE YONG	REVISED - R. BORO 12-08-2008
pw\1\1084EBID\INTEG\illinois.gov\FWIDOT\Documents\DOT Offices\District 1\Projects\Dist 1\Projects\CADD\cadd\CAD\sheet\bd34.dgn		DRAWN -	REVISED - R. BORO 09-14-2009
	PLOT SCALE = 50,0000 / 1 in.	CHECKED -	REVISED - R. BORO 08-06-2012
Default	PLOT DATE = 12/21/2015	DATE - 09-22-90	REVISED - R. BORO 05-08-2015

STATE OF ILLINOIS
DEPARTMENT OF TRANSPORTATION

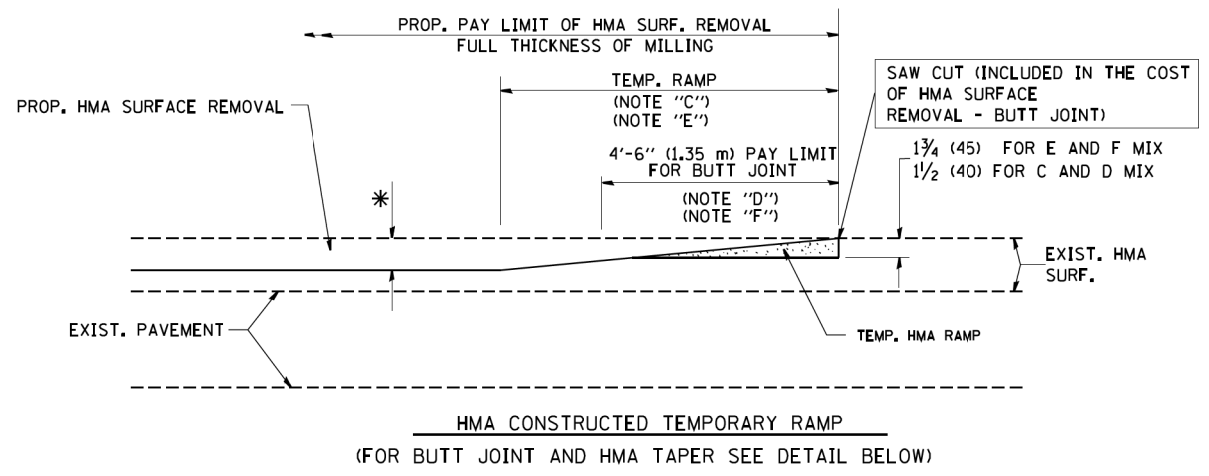
DETAILS FOR DEPRESSED CURB & GUTTER AND
SHOULDER TREATMENT AT TBT TY. 1 SPL.

SCALE: NONE SHEET 1 OF 1 SHEETS STA. TO STA.

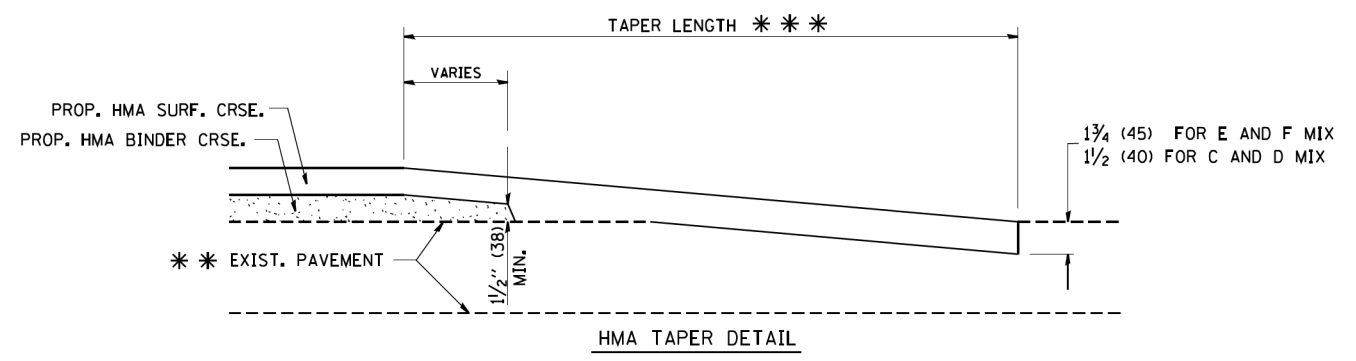
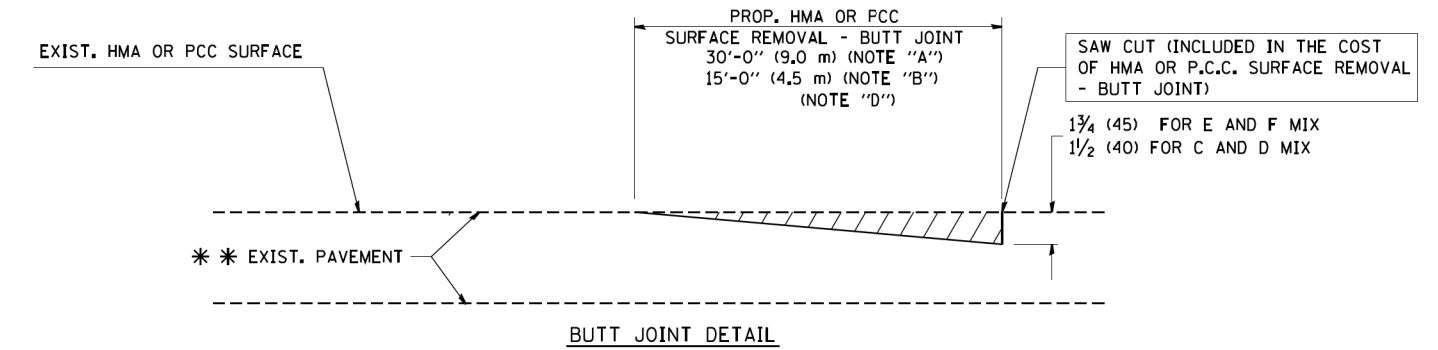
F.A.P. RTE.	SECTION	COUNTY	TOTAL SHEETS	SHEET NO.
353	42R-1-BR	COOK	22	15
BD600-10 (BD 34)			CONTRACT NO. 60R75	
ILLINOIS FED. AID PROJECT				



OPTION 1



**OPTION 2
TYPICAL TEMPORARY RAMP**



TYPICAL BUTT JOINT AND HMA TAPER FOR RESURFACING ONLY

*** PC CONCRETE, HMA OR HMA RESURFACED PAVEMENT.

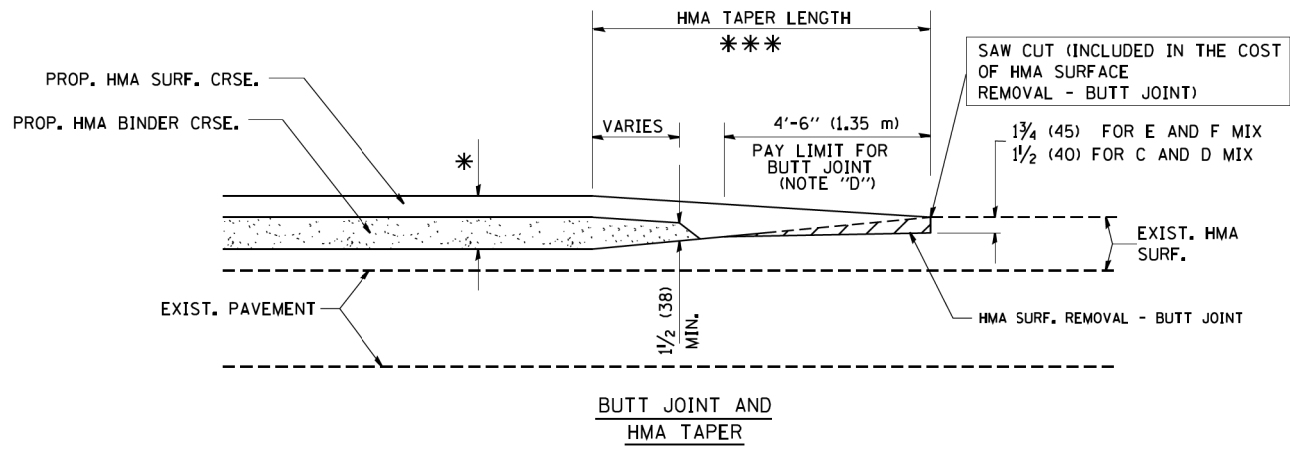
NOTES

- A: MAINLINE ROADWAYS AND MAJOR SIDE ROADS.
 - B: MINOR SIDE ROADS.
 - C: THE TEMP. RAMP SHALL BE CONSTRUCTED IMMEDIATELY UPON REMOVAL OF THE EXISTING HMA SURFACE.
 - D: THE BUTT JOINT SHALL BE CONSTRUCTED IMMEDIATELY PRIOR TO PLACING THE PROPOSED HMA COURSES.
 - E: TAPER THE TEMP. RAMP AT A RATE OF 3'-0" (900 mm) PER 1 INCH (25 mm) OF MILLING THICKNESS.
 - F: INSTALLATION AND REMOVAL OF THE 4'-6" (1.35 m) TEMP. RAMP IS INCLUDED IN COST OF HMA SURFACE REMOVAL - BUTT JOINT
 - G: SEE ARTICLE 406.08 AND 406.14 OF THE STANDARD SPECIFICATIONS FOR "HMA AND/OR PCC SURFACE REMOVAL, BUTT JOINT".
- * SEE TYPICAL SECTIONS FOR MILLING THICKNESS.
- *** 20'-0" (6.1 m) PER 1 (25) RESURFACING (NOTE "A")
10'-0" (3.0 m) PER 1 (25) RESURFACING (NOTE "B")

BASIS OF PAYMENT:

THE BUTT JOINT WILL BE PAID FOR AT THE CONTRACT UNIT PRICE PER SQUARE YARD (SQUARE METER) FOR "HOT-MIX ASPHALT SURFACE REMOVAL - BUTT JOINT" OR FOR "PORTLAND CEMENT CONCRETE SURFACE REMOVAL - BUTT JOINT".

ALL DIMENSIONS ARE IN INCHES (MILLIMETERS) UNLESS OTHERWISE SHOWN.



TYPICAL BUTT JOINT AND HMA TAPER FOR MILLING AND RESURFACING

FILE NAME = W:\distata\22x34\bd32.dgn

USER NAME = gegl1enobt
PLOT SCALE = 50.0000' / IN.
PLOT DATE = 1/4/2008

DESIGNED - M. DE YONG
DRAWN -
CHECKED -
DATE - 06-13-90

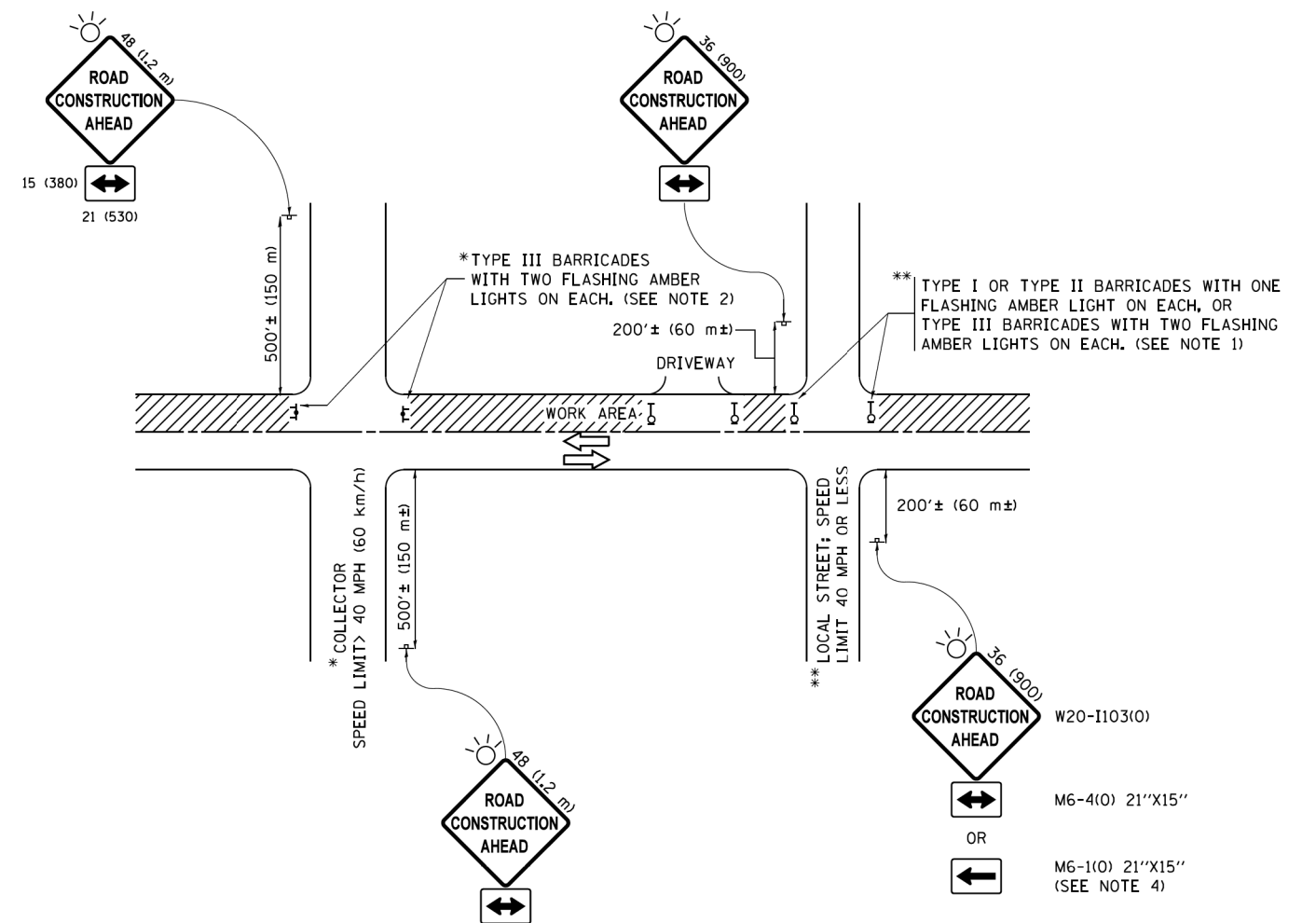
REVISED - R. SHAH 10-25-94
REVISED - A. ABBAS 03-21-97
REVISED - M. GOMEZ 04-06-01
REVISED - R. BORO 01-01-07

**STATE OF ILLINOIS
DEPARTMENT OF TRANSPORTATION**

**BUTT JOINT AND
HMA TAPER DETAILS**

SCALE: NONE SHEET NO. 1 OF 1 SHEETS STA. TO STA.

F.A.P. RTE.	SECTION	COUNTY	TOTAL SHEETS	SHEET NO.
353	42R-1-BR	COOK	22	16
BD400-05 BD32			CONTRACT NO. 60R75	
FED. ROAD DIST. NO. 1 ILLINOIS FED. AID PROJECT				



NOTES:

1. SIDE ROAD WITH A SPEED LIMIT OF 40 MPH (60 km/h) OR LESS AS SHOWN ON THE DRAWING AND AS DIRECTED BY THE ENGINEER:
 - a) ONE "ROAD CONSTRUCTION AHEAD" SIGN 36 x 36 (900x900) WITH A FLASHER MOUNTED ON IT APPROXIMATELY 200' (60 m) IN ADVANCE OF THE MAIN ROUTE.
 - b) THE CLOSED PORTION OF THE MAIN ROUTE SHALL BE PROTECTED BY BLOCKING WITH TYPE I, TYPE II OR TYPE III BARRICADES, 1/3 OF THE CROSS SECTION OF THE CLOSED PORTION.
2. SIDE ROAD WITH A SPEED LIMIT GREATER THAN 40 MPH (60 km/h) AS SHOWN ON THE DRAWING AND AS DIRECTED BY THE ENGINEER:
 - a) ONE "ROAD CONSTRUCTION AHEAD" SIGN 48 x 48 (1.2 m x 1.2 m) WITH A FLASHER MOUNTED ON IT APPROXIMATELY 500' (150 m) IN ADVANCE OF THE MAIN ROUTE.
 - b) THE CLOSED PORTION OF THE MAIN ROUTE SHALL BE PROTECTED BY BLOCKING WITH TYPE III BARRICADES, 1/2 OF THE CROSS SECTION OF THE CLOSED PORTION.
3. CONES MAY BE SUBSTITUTED FOR BARRICADES OR DRUMS AT HALF THE SPACING DURING DAY OPERATIONS. CONES SHALL BE A MINIMUM OF 28 (710) IN HEIGHT.
4. WHEN THE SIDE ROAD LIES BETWEEN THE BEGINNING OF THE MAINLINE SIGNING AND THE WORK ZONE, A SINGLE HEADED ARROW (M6-1) SHALL BE USED IN LIEU OF THE DOUBLE HEADED ARROW (M6-4).
5. WHEN WORK IS BEING PERFORMED ON A SIDE ROAD OR DRIVEWAY, FOLLOW THE APPLICABLE STANDARD(S). THE DIRECTIONAL ARROW (M6-1 OR M6-4) SHALL BE COVERED OR REMOVED WHEN NO LONGER CONSISTENT WITH THE TRAFFIC CONTROL SET-UP.
6. ADVANCE WARNING SIGNS ARE TO BE OMITTED ON DRIVEWAYS UNLESS OTHERWISE SPECIFIED IN THE PLANS OR BY THE ENGINEER.
7. THE TRAFFIC CONTROL AND PROTECTION FOR SIDE ROADS, INTERSECTIONS, AND DRIVEWAYS SHALL BE INCLUDED IN THE COST OF SPECIFIED TRAFFIC CONTROL STANDARDS OR ITEMS.

All dimensions are in inches (millimeters) unless otherwise shown.

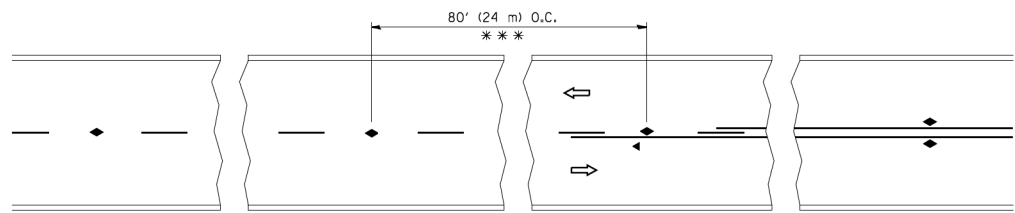
FILE NAME =	USER NAME = footemj	DESIGNED - L.H.A.	REVISED - A. HOUSEH 10-15-96
pw1\1L084E8ID\INTEG\illinois.gov\FWIDOT\Documents\IDOT Offices\District 1\Projects\Dist1\CADData\CADsheets\to10.dgn		DRAWN	REVISED - T. RAMMACHER 01-06-00
Default	PLOT SCALE = 50,000' / 1" =	CHECKED -	REVISED - A. SCHUETZE 07-01-13
	PLOT DATE = 9/15/2016	DATE - 06-89	REVISED - A. SCHUETZE 09-15-16

**STATE OF ILLINOIS
DEPARTMENT OF TRANSPORTATION**

**TRAFFIC CONTROL AND PROTECTION FOR
SIDE ROADS, INTERSECTIONS, AND DRIVEWAYS**

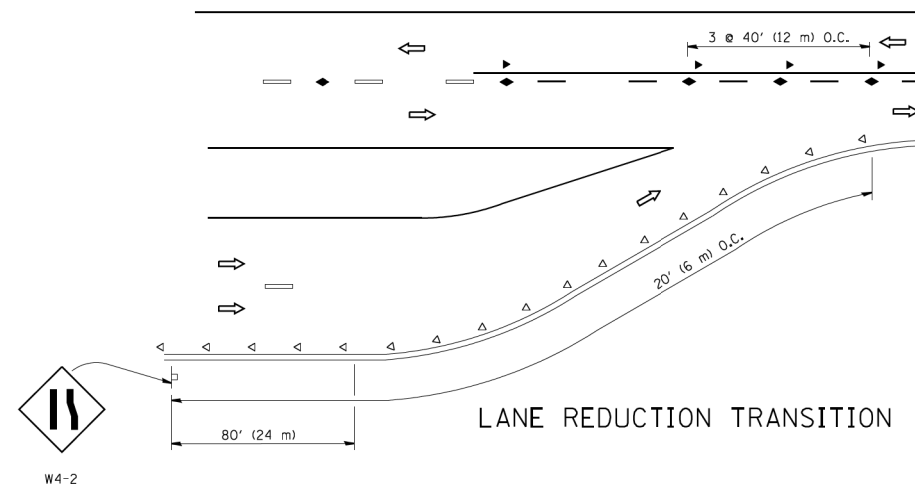
SCALE: NONE SHEET 1 OF 1 SHEETS STA. TO STA.

F.A.P. RTE.	SECTION	COUNTY	TOTAL SHEETS	SHEET NO.
353	42R-1-BR	COOK	22	17
TC-10			CONTRACT NO. 60R75	
ILLINOIS FED. AID PROJECT				

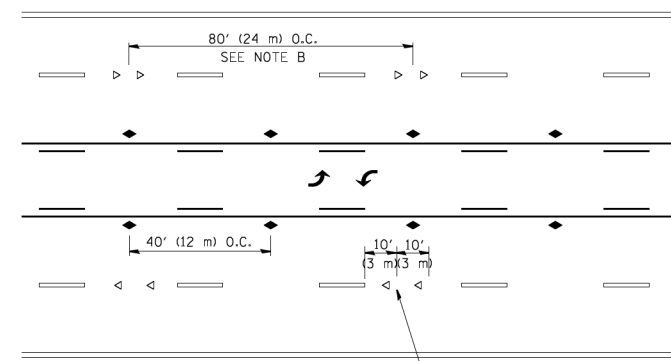


*** REDUCE TO 40' (12 m) O.C. ON CURVES WITH POSTED OR ADVISORY SPEED 45 M.P.H. (70 km/h) OR LESS.

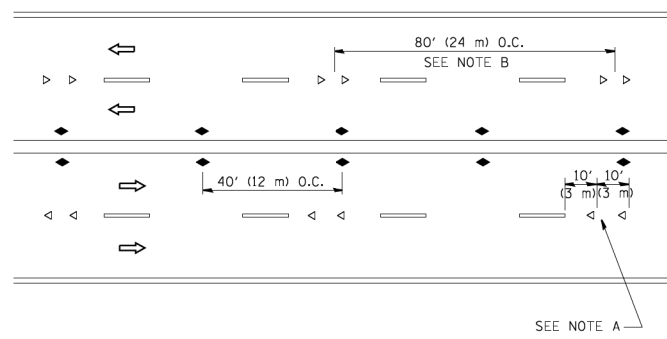
TWO-LANE/TWO-WAY



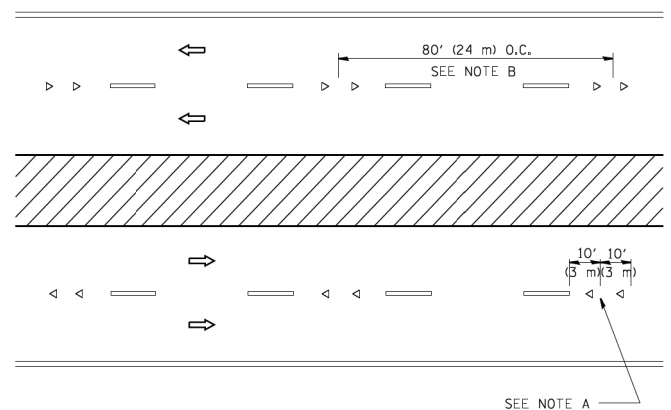
LANE REDUCTION TRANSITION



TWO-WAY LEFT TURN



MULTI-LANE/UNDIVIDED



MULTI-LANE/DIVIDED

GENERAL NOTES

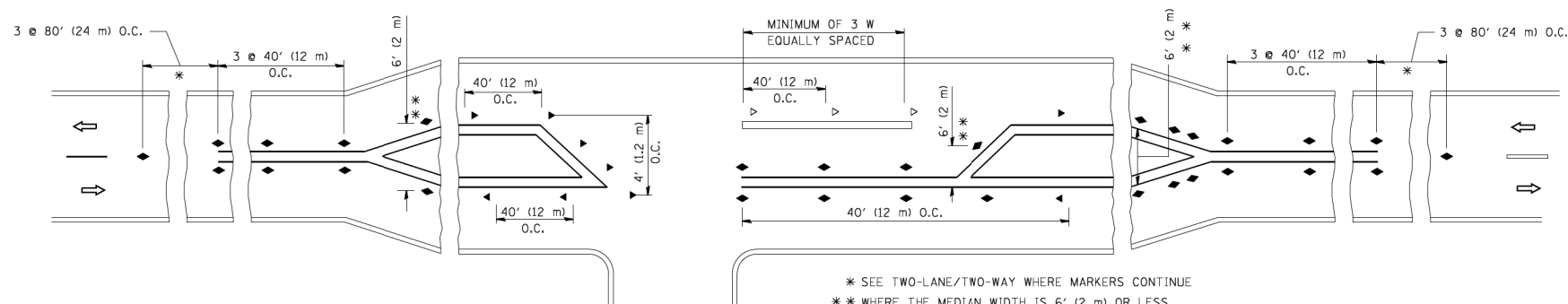
1. MARKERS USED WITH DASHED LINES SHALL BE CENTERED IN THE GAP BETWEEN SEGMENTS.
2. MARKERS USED ADJACENT TO SOLID LINES SHALL BE OFFSET 2 TO 3 (50 TO 75) TOWARD TRAFFIC AS SHOWN.
3. MARKERS THROUGH TANGENTS LESS THAN 500' (150 m) IN LENGTH BETWEEN CURVES SHALL BE INSTALLED AT THE LESSER OF THE TWO CURVE SPACINGS.

SYMBOLS

- YELLOW STRIPE
- WHITE STRIPE
- ◀ ONE-WAY AMBER MARKER
- ◁ ONE-WAY CRYSTAL MARKER (W/O)
- ◆ TWO-WAY AMBER MARKER

LANE MARKER NOTES

- A. USE DOUBLE LANE LINE MARKERS SPACED AS SHOWN.
- B. REDUCE TO 40' (12 m) O.C. ON CURVES WHERE ADVISORY SPEEDS ARE 10 M.P.H. (20 km/h) LOWER THAN POSTED SPEEDS.

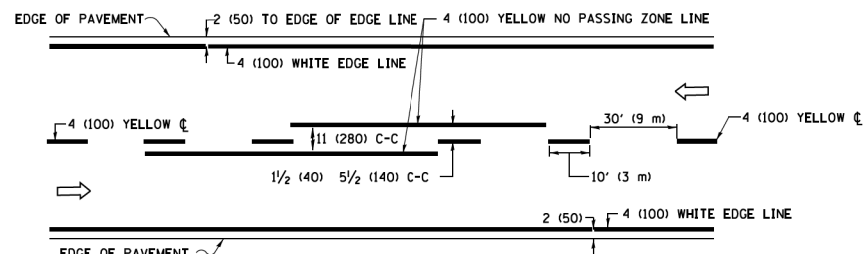


LEFT TURN

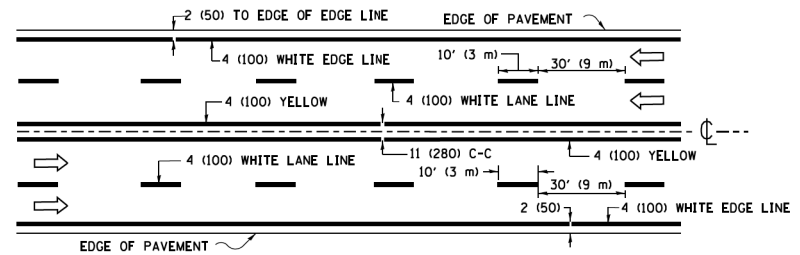
* SEE TWO-LANE/TWO-WAY WHERE MARKERS CONTINUE
 ** WHERE THE MEDIAN WIDTH IS 6' (2 m) OR LESS USE TWO-WAY MARKERS.

All dimensions are in inches (millimeters) unless otherwise shown.

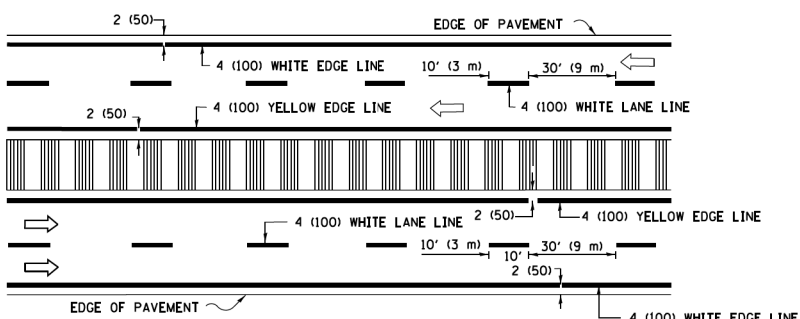
FILE NAME =	USER NAME = lveys	DESIGNED -	REVISED - T. RAMMACHER 09-19-94	STATE OF ILLINOIS DEPARTMENT OF TRANSPORTATION	TYPICAL APPLICATIONS RAISED REFLECTIVE PAVEMENT MARKERS (SNOW-PLOW RESISTANT)			F.A.P. RTE. 353	SECTION 42R-1-BR	COUNTY COOK	TOTAL SHEETS 22	SHEET NO. 18	
ca:\pki\work\pki\dot\lveys\d0108315\tcl1.dgn		DRAWN -	REVISED - T. RAMMACHER 03-12-99		SCALE: NONE	SHEET NO. 1	OF 1 SHEETS	STA.	TO STA.	TC-11			CONTRACT NO. 60R75
		PLOT SCALE = 50.000' / IN.	REVISED - T. RAMMACHER 01-06-00		FED. ROAD DIST. NO. 1 ILLINOIS FED. AID PROJECT								
		PLOT DATE = 3/2/2011	REVISED - C. JUCIUS 09-09-09										



2-LANE ROADWAY

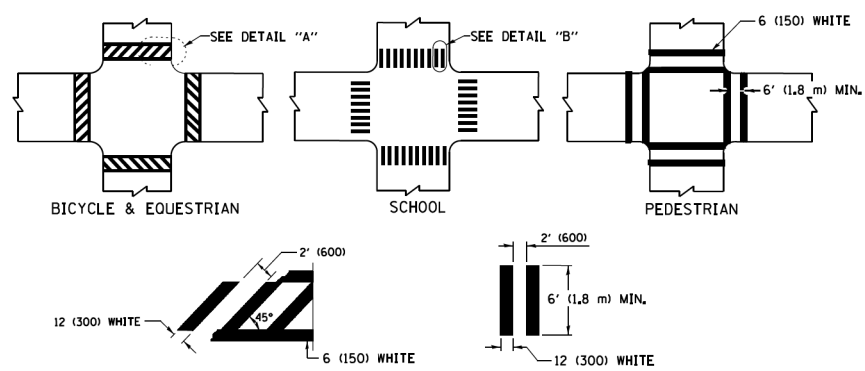


MULTI-LANE UNDIVIDED



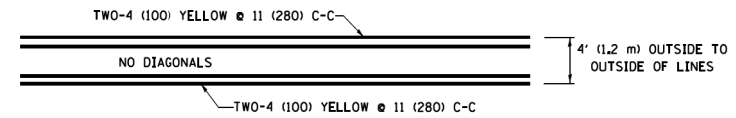
MULTI-LANE DIVIDED WITH MEDIAN

TYPICAL LANE AND EDGE LINE MARKING

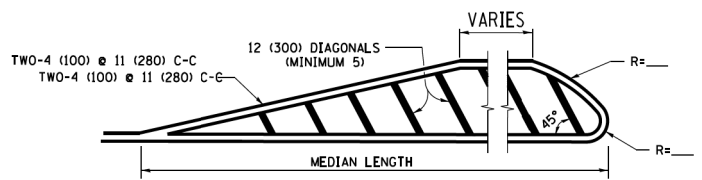


TYPICAL CROSSWALK MARKING

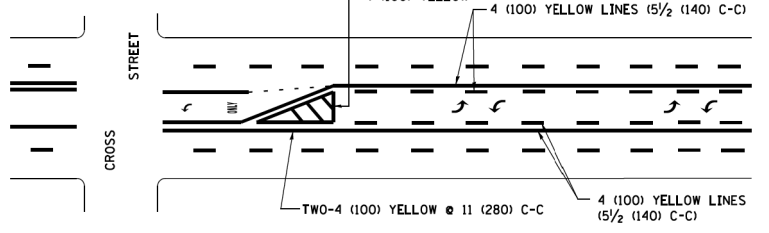
* MARKINGS SHALL BE INSTALLED PARALLEL TO THE CENTERLINE OF THE ROAD WHICH IT CROSSES



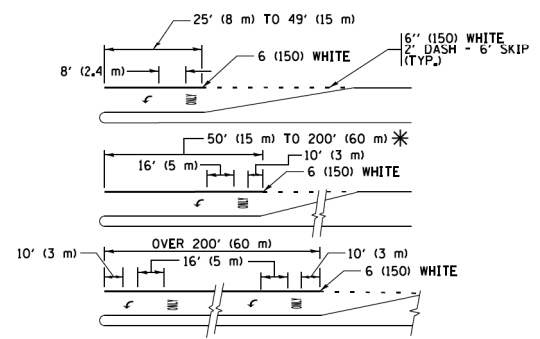
4' (1.2 m) WIDE MEDIANS ONLY



MEDIANS OVER 4' (1.2 m) WIDE

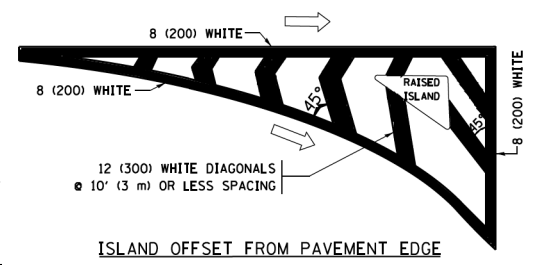


MEDIAN WITH TWO-WAY LEFT TURN LANE TYPICAL PAINTED MEDIAN MARKING

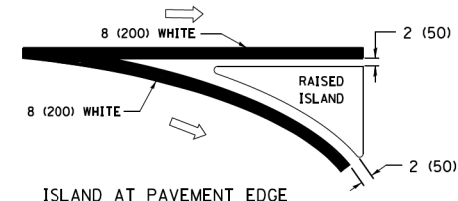


TYPICAL LEFT (OR RIGHT) TURN LANE TYPICAL TURN LANE MARKING

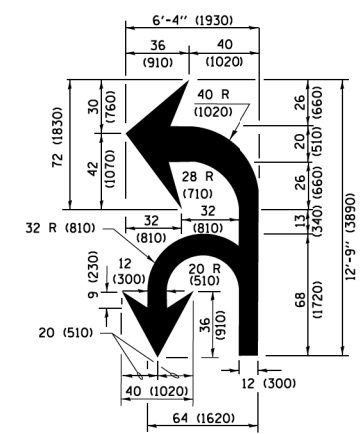
FULL SIZE LETTERS 8' (2.4 m) AND ARROWS SHALL BE USED. AREA = 15.6 SQ. FT. (1.5 m²) ONLY AREA = 20.8 SQ. FT. (1.9 m²)
 * TURN LANES IN EXCESS OF 400' (120 m) IN LENGTH MAY HAVE AN ADDITIONAL SET OF ARROW - "ONLY" INSTALLED MIDWAY BETWEEN THE OTHER TWO SETS OF ARROW - "ONLY".



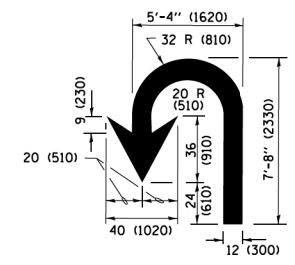
ISLAND OFFSET FROM PAVEMENT EDGE



ISLAND AT PAVEMENT EDGE TYPICAL ISLAND MARKING



COMBINATION LEFT AND U-TURN



U-TURN

LANE REDUCTION TRANSITION

* LANE REDUCTION ARROWS REQUIRED AT SPEEDS OF 45 MPH OR GREATER OR WHEN SPECIFIED IN PLANS.

D(FT)	SPEED LIMIT
345	30
425	35
500	40
580	45
665	50
750	55

TYPE OF MARKING	WIDTH OF LINE	PATTERN	COLOR	SPACING /REMARKS
CENTERLINE ON 2 LANE PAVEMENT	4 (100)	SKIP-DASH	YELLOW	10' (3 m) LINE WITH 30' (9 m) SPACE
CENTERLINE ON MULTI-LANE UNDIVIDED PAVEMENT	2 @ 4 (100)	SOLID	YELLOW	11 (280) C-C
NO PASSING ZONE LINES FOR ONE DIRECTION FOR BOTH DIRECTIONS	4 (100) 2 @ 4 (100)	SOLID SOLID	YELLOW YELLOW	5/2 (140) C-C FROM SKIP-DASH CENTERLINE 11 (280) C-C OMIT SKIP-DASH CENTERLINE BETWEEN
LANE LINES	4 (100) 5 (125) ON FREEWAYS	SKIP-DASH SKIP-DASH	WHITE WHITE	10' (3 m) LINE WITH 30' (9 m) SPACE
DOTTED LINES (EXTENSIONS OF CENTER, LANE OR TURN LANE MARKINGS)	SAME AS LINE BEING EXTENDED	SKIP-DASH	SAME AS LINE BEING EXTENDED	2' (600) LINE WITH 6' (1.8 m) SPACE
EDGE LINES	4 (100)	SOLID	YELLOW-LEFT WHITE-RIGHT	OUTLINE MEDIANS IN YELLOW
TURN LANE MARKINGS	6 (150) LINE; FULL SIZE LETTERS & SYMBOLS (8' (2.4m))	SOLID	WHITE	SEE TYPICAL TURN LANE MARKING DETAIL
TWO WAY LEFT TURN MARKING	2 @ 4 (100) EACH DIRECTION 8' (2.4m) LEFT ARROW	SKIP-DASH AND SOLID IN PAIRS	YELLOW WHITE	10' (3 m) LINE WITH 30' (9 m) SPACE FOR SKIP-DASH; 5/2 (140) C-C BETWEEN SOLID LINE AND SKIP-DASH LINE SEE TYPICAL TWO-WAY LEFT TURN MARKING DETAIL
CROSSWALK LINES (PEDESTRIAN) A. DIAGONALS (BIKE & EQUESTRIAN) B. LONGITUDINAL BARS (SCHOOL)	2 @ 6 (150) 12 (300) @ 45° 12 (300) @ 90°	SOLID SOLID SOLID	WHITE WHITE WHITE	NOT LESS THAN 6' (1.8 m) APART 2' (600) APART 2' (600) APART SEE TYPICAL CROSSWALK MARKING DETAILS.
STOP LINES	24 (600)	SOLID	WHITE	PLACE 4' (1.2 m) IN ADVANCE OF AND PARALLEL TO CROSSWALK, IF PRESENT, OTHERWISE, PLACE AT DESIRED STOPPING POINT, PARALLEL TO CROSSROAD CENTERLINE, WHERE POSSIBLE
PAINTED MEDIANS	2 @ 4 (100) WITH 12 (300) DIAGONALS @ 45° NO DIAGONALS USED FOR 4' (1.2 m) WIDE MEDIANS	SOLID	YELLOW; TWO WAY TRAFFIC WHITE; ONE WAY TRAFFIC	11 (280) C-C FOR THE DOUBLE LINE SEE TYPICAL PAINTED MEDIAN MARKING.
CORE MARKING AND CHANNELIZING LINES	8 (200) WITH 12 (300) DIAGONALS @ 45°	SOLID	WHITE	DIAGONALS; 15' (4.5 m) C-C (LESS THAN 30MPH (50 km/h)) 20' (6 m) C-C (30 MPH (50 km/h) TO 45MPH (70 km/h)) 30' (9 m) C-C (OVER 45MPH (70 km/h))
RAILROAD CROSSING	24 (600) TRANSVERSE LINES; "RR" IS 6' (1.8 m) LETTERS; 16 (400) LINE FOR "X"	SOLID	WHITE	SEE STATE STANDARD 780001 AREA OF "RR" IS 6' (1.8 m) LETTERS; 16 (400) LINE FOR "X"
SHOULDER DIAGONALS (REQUIRED FOR SHOULDERS ≥ 8')	12 (300) @ 45°	SOLID	WHITE - RIGHT YELLOW - LEFT	50' (15 m) C-C (LESS THAN 30MPH (50 km/h)) 75' (25 m) C-C (30 MPH (50 km/h) TO 45MPH (70 km/h)) 150' (45 m) C-C (OVER 45MPH (70 km/h))
U TURN ARROW	SEE DETAIL	SOLID	WHITE	16.3 SF
2 ARROW COMBINATION LEFT AND U TURN	SEE DETAIL	SOLID	WHITE	30.4 SF

FOR FURTHER DETAILS ON PAVEMENT MARKING REFER TO STANDARD SPECIFICATIONS FOR ROAD AND BRIDGE CONSTRUCTION AND STATE STANDARD 780001.

All dimensions are in inches (millimeters) unless otherwise shown.

FILE NAME = W:\dststd\22x34\1013.dgn	USER NAME = luyee	DESIGNED - EVERS	REVISED - C. JUCIUS 09-09-09
Default	PLOT SCALE = 50,000 1" = 1 mi	DRAWN -	REVISED - C. JUCIUS 07-01-13
	PLOT DATE = 6/23/2017	CHECKED -	REVISED - C. JUCIUS 12-21-15
		DATE - 03-19-90	REVISED - C. JUCIUS 04-12-16

STATE OF ILLINOIS DEPARTMENT OF TRANSPORTATION

DISTRICT ONE			
TYPICAL PAVEMENT MARKINGS			
SCALE: NONE	SHEET 1	OF 1 SHEETS	STA. TO STA.

F.A.P. RTE. 353	SECTION 42R-1-BR	COUNTY COOK	TOTAL SHEETS 22	SHEET NO. 19
TC-13		CONTRACT NO. 60R75	ILLINOIS FED. AID PROJECT	

TURN BAY ENTRANCE AT START OF LANE CLOSURE TAPER

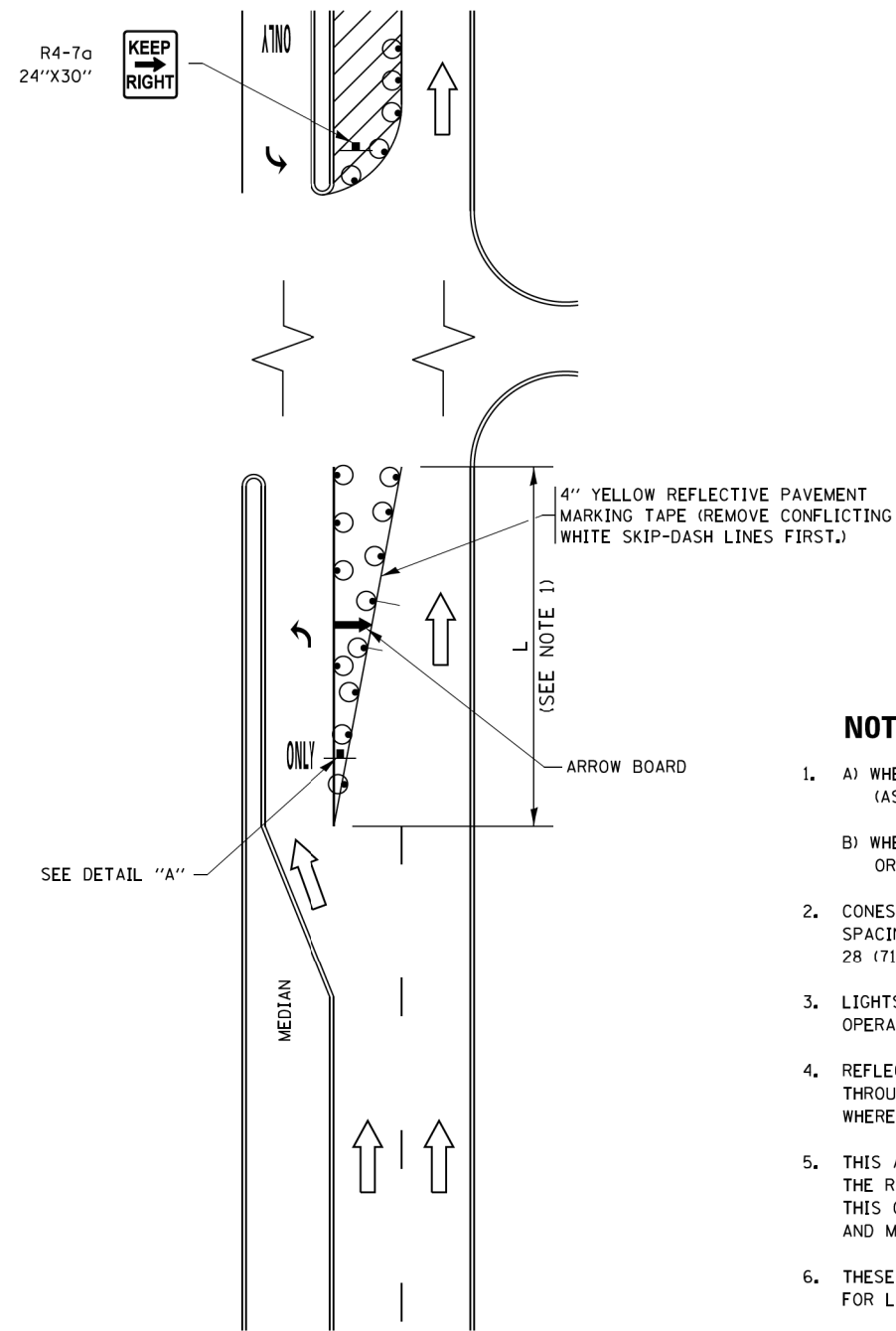
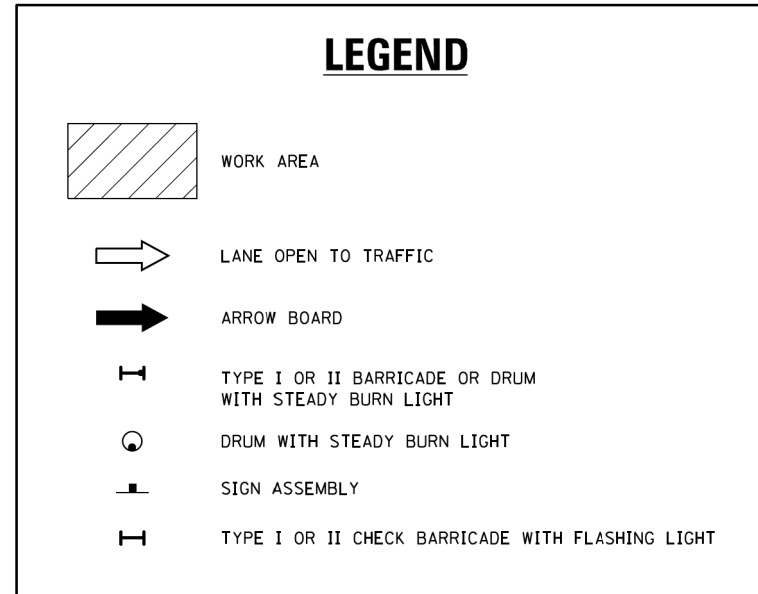


FIGURE 1



NOTES:

1. A) WHEN "L" IS \leq THE STORAGE LENGTH OF THE TURN LANE (AS SHOWN IN FIG. 1), USE FIGURE 1.
B) WHEN "L" IS $>$ THE STORAGE LENGTH OF THE TURN LANE OR THE TURN LANE IS WITHIN THE LANE CLOSURE, USE FIGURE 2.
2. CONES MAY BE SUBSTITUTED FOR BARRICADES OR DRUMS AT HALF THE SPACING DURING DAY OPERATIONS. CONES SHALL BE A MINIMUM OF 28 (710) IN HEIGHT.
3. LIGHTS WILL NOT BE REQUIRED ON BARRICADES OR DRUMS FOR DAY OPERATIONS. ALL LIGHTS SHALL BE MONODIRECTIONAL.
4. REFLECTIVE TEMPORARY PAVEMENT MARKINGS SHALL BE PLACED THROUGHOUT THE BARRICADED AREAS OF EACH TURN BAY AS SHOWN WHERE THE CLOSURE TIME IS GREATER THAN FOURTEEN (14) DAYS.
5. THIS APPLICATION ALSO APPLIES WHEN WORK IS BEING PERFORMED IN THE RIGHT LANE(S) AND THE RIGHT TURN BAY IS TO REMAIN OPEN. UNDER THIS CONDITION, "RIGHT TURN LANE" R3-I100R 24 x 24 (600 x 600) AND M6-2R 21 x 15 (530 x 380) SHALL BE USED.
6. THESE CONTROLS SHALL SUPPLEMENT MAINLINE TRAFFIC CONTROL FOR LANE CLOSURES.
7. THE SIGNS SHALL BE MOUNTED ABOVE THE BARRICADES/DRUMS ON SEPARATE SIGN SUPPORTS THAT MEET NCHRP 350 OR MASH PRE REQUIREMENTS.
8. TRAFFIC CONTROL AND PROTECTION AT TURN BAYS (TO REMAIN OPEN TO TRAFFIC) SHALL BE INCLUDED IN THE COST OF SPECIFIED TRAFFIC CONTROL STANDARDS OR ITEMS.

TURN BAY ENTRANCE WITHIN A LANE CLOSURE

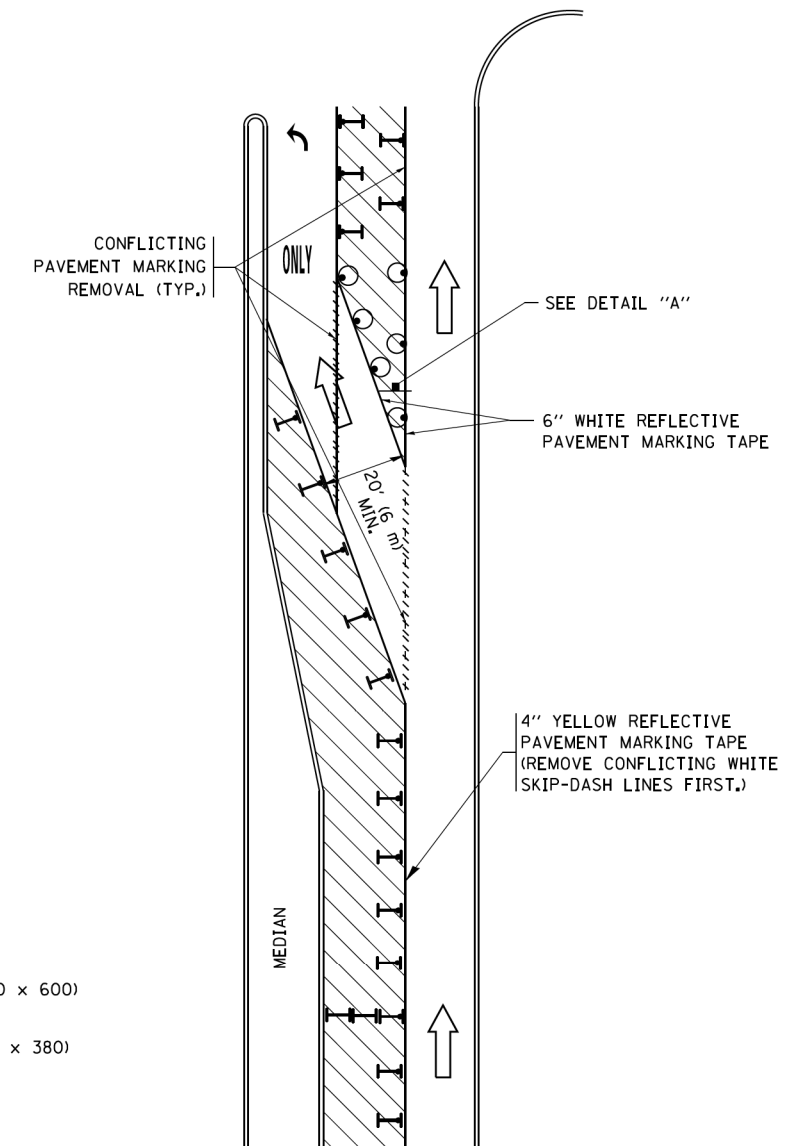
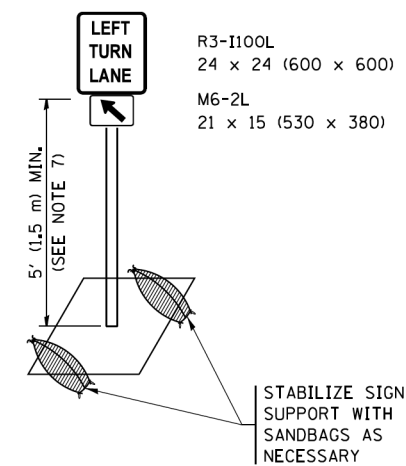


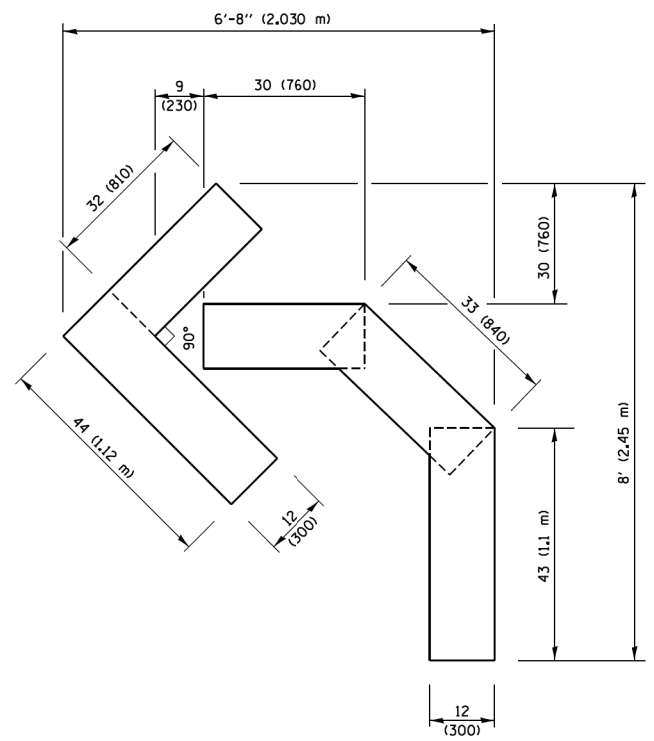
FIGURE 2



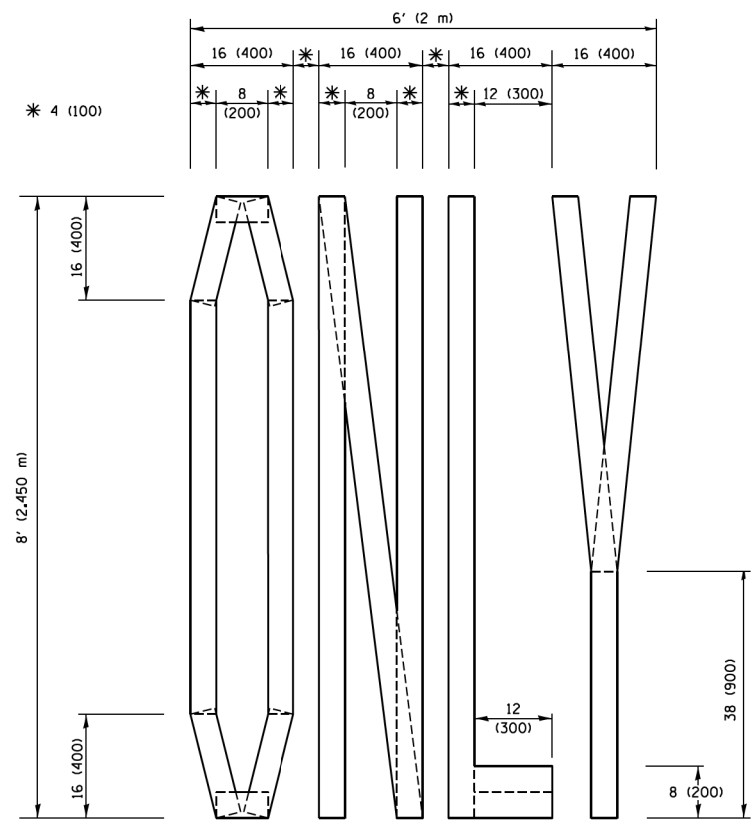
DETAIL A

All dimensions are in inches (millimeters) unless otherwise shown.

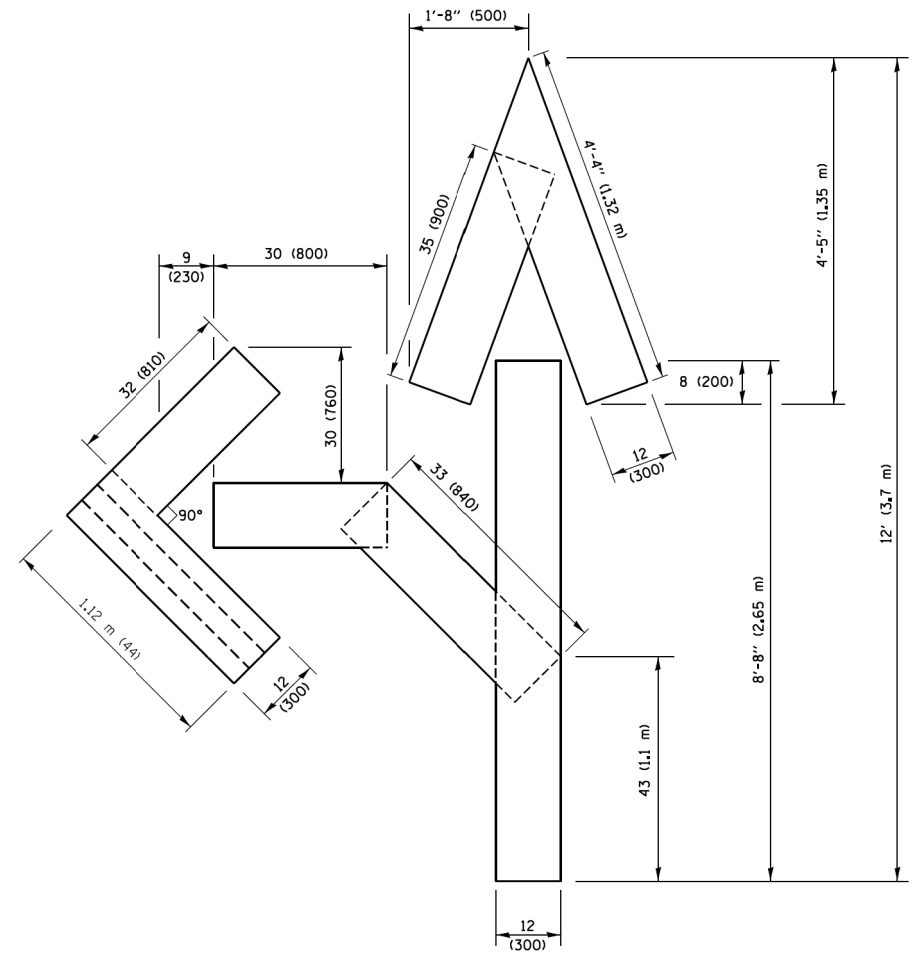
FILE NAME =	USER NAME = footemj	REVISED - T. RAMMACHER 09-08-94	REVISED - R. BORO 09-14-09	STATE OF ILLINOIS DEPARTMENT OF TRANSPORTATION	TRAFFIC CONTROL AND PROTECTION AT TURN BAYS (TO REMAIN OPEN TO TRAFFIC)			F.A.P. RTE.	SECTION	COUNTY	TOTAL SHEETS	SHEET NO.
Default		REVISED - A. HOUSEH 10-07-95	REVISED - A. SCHUETZE 07-01-13					353	42R-1-BR	COOK	22	20
	PLOT SCALE = 50,0000' / in.	REVISED - A. HOUSEH 10-12-96	REVISED - A. SCHUETZE 09-15-16		TC-14			CONTRACT NO. 60R75				
	PLOT DATE = 9/15/2016	REVISED - T. RAMMACHER 01-06-00	REVISED -		SCALE: NONE	SHEET 1	OF 1 SHEETS	STA.	TO STA.	ILLINOIS FED. AID PROJECT		



QUANTITY
 4 (100) LINE = 45.5 ft. (13.9 m)
 15.2 sq. ft. (1.41 sq. m)

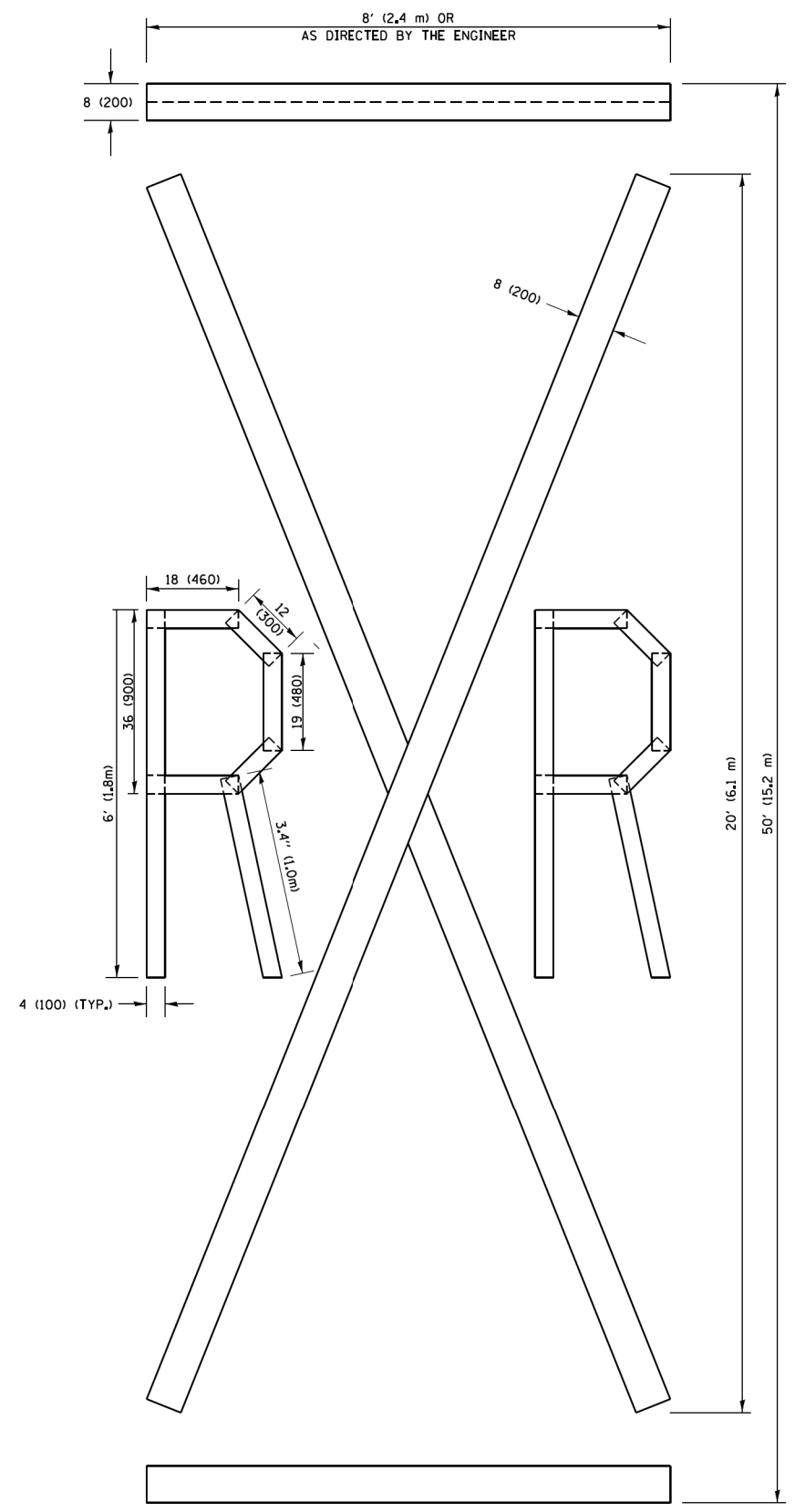


QUANTITY
 4 (100) LINE = 64.1 ft. (19.5 m)
 21.4 sq. ft. (1.99 sq. m)



QUANTITY
 4 (100) LINE = 82.5 ft. (25.1 m)
 27.5 sq. ft. (2.53 sq. m)

NOTE:
 ALL QUANTITIES OF PLACEMENT ARE REPRESENTED IN LINEAR FEET OF 4" LINES TO MATCH THE 4" TEMPORARY TAPE PAY ITEM AND REPRESENTS THE TOTAL QUANTITY OF 4" TAPE REQUIRED.



QUANTITY
 4 (100) LINE = 225.9 ft. (68.9 m)
 75.3 sq. ft. (6.99 sq. m)

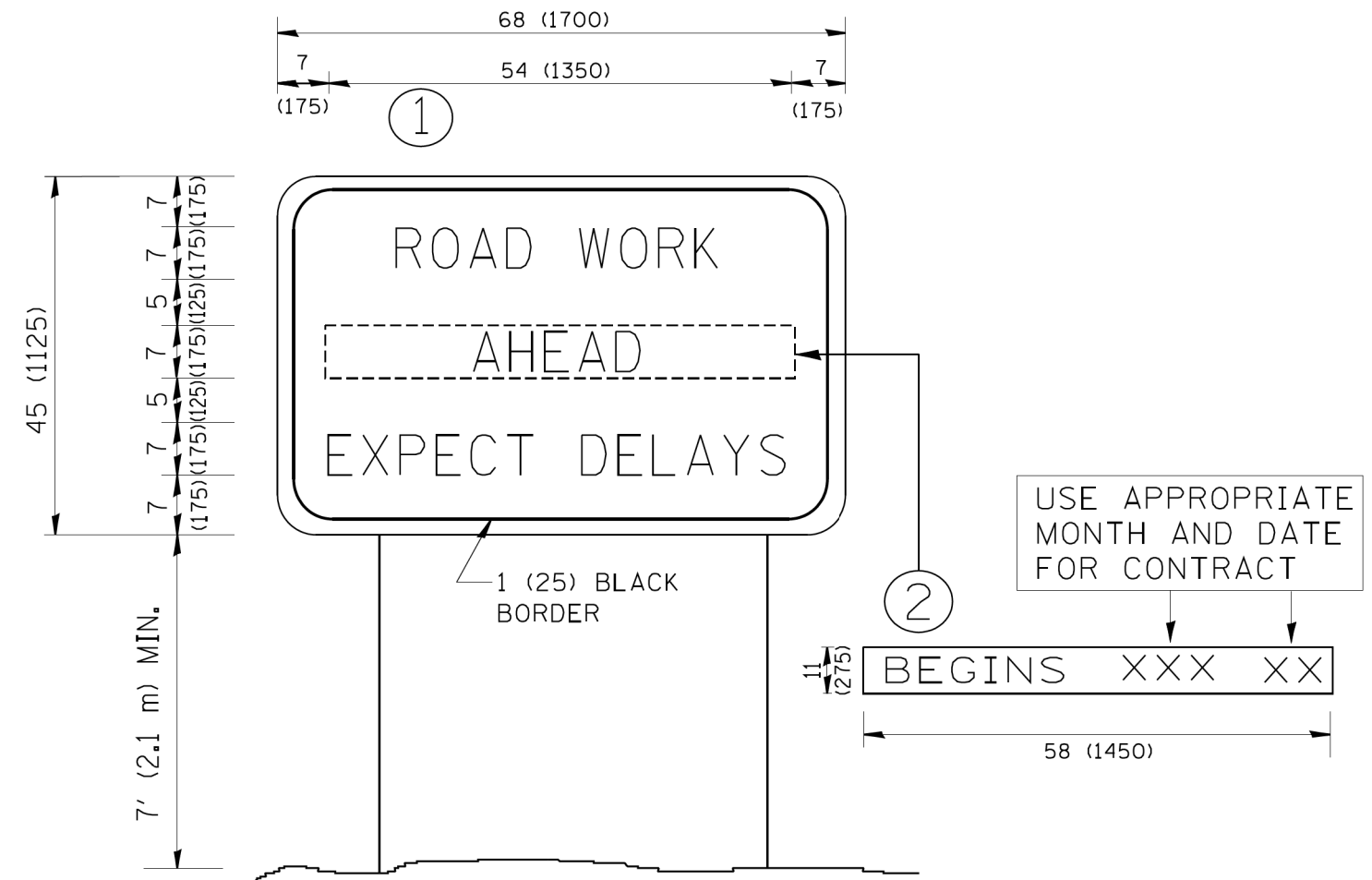
All dimensions are in inches (millimeters) unless otherwise shown.

FILE NAME =	USER NAME = footemj	DESIGNED -	REVISED -T. RAMMACHER 03-02-98
pw\1\084E81D\INTEG\illinois.gov\FWIDOT\Documents\DOT Offices\District 1\Projects\Dist 1\CADData\CADsheets\tc16.dgn		DRAWN	REVISED -E. GOMEZ 08-28-00
PLOT SCALE = 50,0000 / 1x		CHECKED -	REVISED -E. GOMEZ 08-28-00
PLOT DATE = 9/15/2016		DATE -	REVISED -A. SCHUETZE 09-15-16

**STATE OF ILLINOIS
 DEPARTMENT OF TRANSPORTATION**

SHORT TERM PAVEMENT MARKING LETTERS AND SYMBOLS			
SCALE: NONE	SHEET NO. 1 OF 1 SHEETS	STA.	TO STA.

F.A.P. RTE.	SECTION	COUNTY	TOTAL SHEETS	SHEET NO.
353	42R-1-BR	COOK	22	21
TC-16		CONTRACT NO. 60R75		
FED. ROAD DIST. NO. 1 ILLINOIS FED. AID PROJECT				



NOTES:

1. USE BLACK LETTERING ON ORANGE BACKGROUND.
2. ERECT SIGNS IN ADVANCE OF THE LOCATION FOR THE "ROAD CONSTRUCTION AHEAD" SIGN AT LOCATIONS AS DIRECTED BY THE ENGINEER.
3. ERECT SIGN ① WITH INSTALLED PANEL ② ONE WEEK PRIOR TO THE START OF CONSTRUCTION.
4. REMOVE PANEL ② SOON AFTER THE START OF CONSTRUCTION.
5. SEE SPECIAL PROVISION FOR "TEMPORARY INFORMATION SIGNING" FOR ADDITIONAL INFORMATION.
6. ONE SIGN ASSEMBLY EQUALS 25.70 SQ. FT. (2.3 SQ. M.)
7. SHALL BE PAID FOR AS TEMPORARY INFORMATION SIGNING.

ALL DIMENSIONS ARE IN INCHES (MILLIMETERS)
UNLESS OTHERWISE SHOWN.

FILE NAME = W:\diststd\22x34\tc22.dgn	USER NAME = gegl1enobt	DESIGNED - DRAWN -	REVISED - R. MIRS 09-15-97 REVISED - R. MIRS 12-11-97
	PLOT SCALE = 50.000 ' / IN.	CHECKED -	REVISED - T. RAMMACHER 02-02-99
	PLOT DATE = 1/4/2008	DATE -	REVISED - C. JUCIUS 01-31-07

**STATE OF ILLINOIS
DEPARTMENT OF TRANSPORTATION**

**ARTERIAL ROAD
INFORMATION SIGN**

SCALE: NONE SHEET NO. 1 OF 1 SHEETS STA. TO STA.

F.A.P. RTE.	SECTION	COUNTY	TOTAL SHEETS	SHEET NO.
353	42R-1-BR	COOK	22	22
TC-22		CONTRACT NO. 60R75		
FED. ROAD DIST. NO. 1 ILLINOIS FED. AID PROJECT				