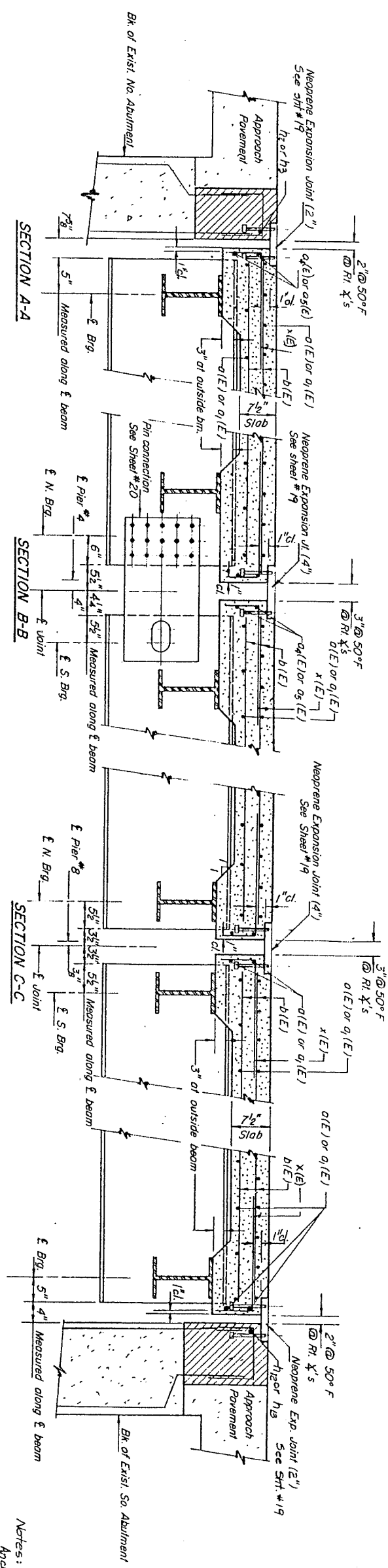
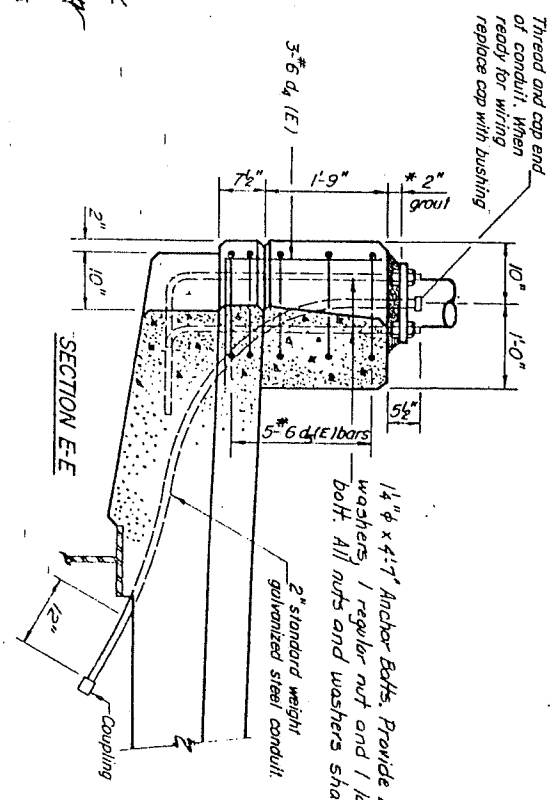
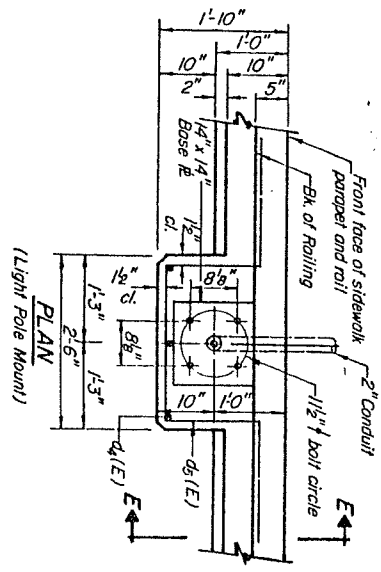


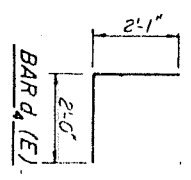
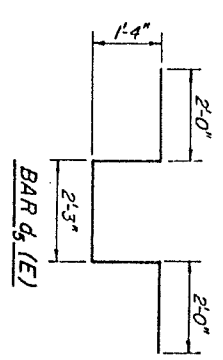
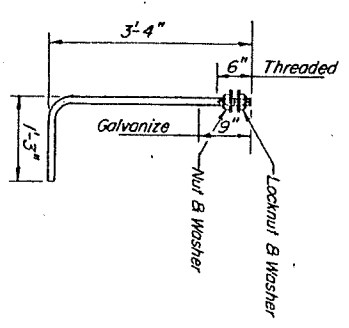
DATE	REVISION	BY	CHKD



Notes:
Anchor bolts for neoprene expansion joints shall be tied to a(E), a(E), a(E), a5(E), h2, h3, h2 or h3 bars. Hatched area to be poured after superstructure formwork has been removed. Quantity of Class X Concrete included with superstructure.



1 1/4" x 4'-7" Anchor Bolts. Provide 2 flat washers, 1 regular nut and 1 locknut for each bolt. All nuts and washers shall be galvanized.



* Grout mixture shall consist of 1 part sand, 1 part cement & 1 part chips (see grave). The grout shall contain water for 1 slump.

DESIGNED David Budish
CHECKED Thomas J. Downey
DRAWN PWS
CHECKED TJD D.B.

EXAMINED May 31 1982
APPROVED
DIRECTOR OF HIGHWAYS

SUPERSTRUCTURE DETAILS
FA. RTE 68 SEC. 29VB-R(83)
MCHENRY COUNTY
STA 40+82.90

