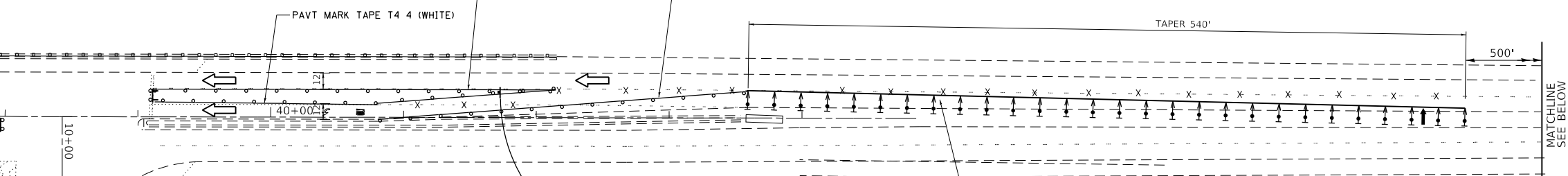




U.S. ROUTE 45
(S. LA GRANGE RD.)

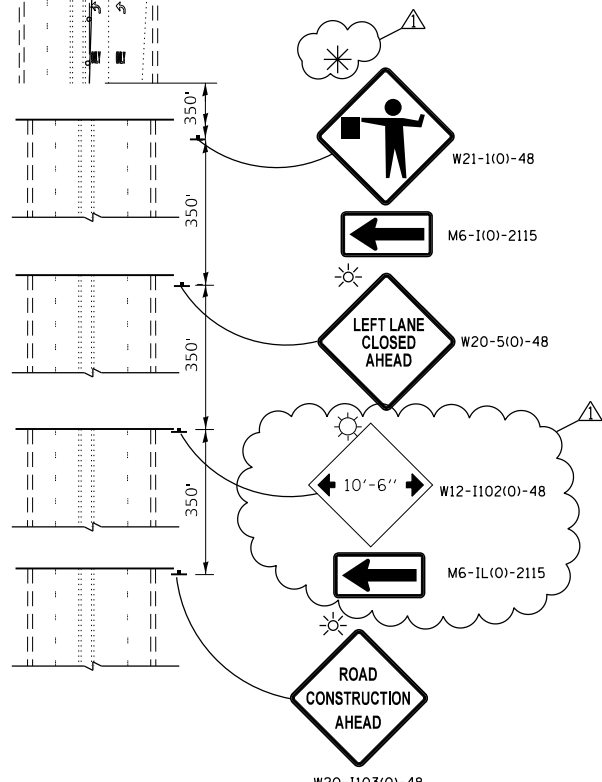
MATCHLINE STA. 37+00

KEEP RIGHT
R4-7a-2430

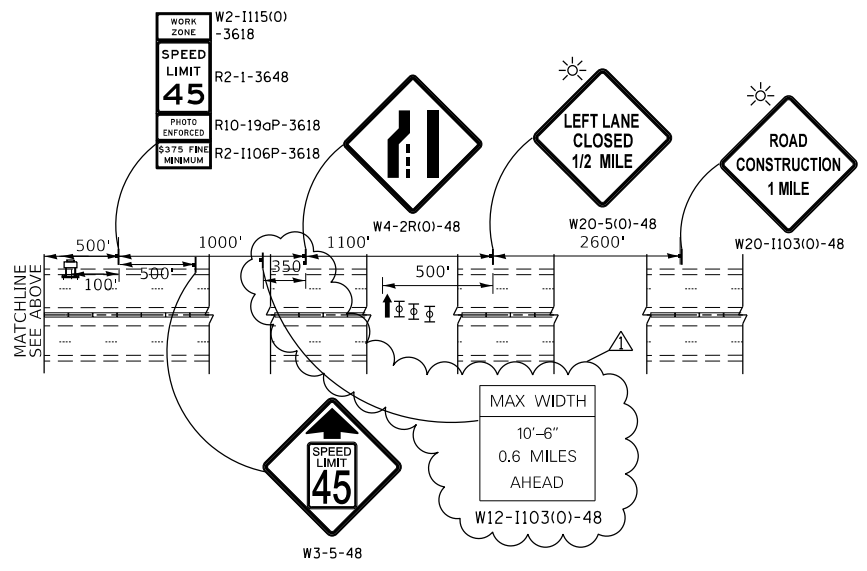


LEFT TURN LANE
R3-1100-2424
M6-2A-2121

W. 11th ST.



* ONLY WHEN FLAGGER IS PRESENT.



LEGEND

- WORK ZONE
- DIRECTION OF TRAFFIC FLOW
- ARROW BOARD
- SIGN
- TYPE III BARRICADES WITH FLASHING LIGHTS
- EXISTING PAVEMENT MARKING REMOVAL
- DOUBLE VERTICAL PANELS @ 20' C-C
- DRUMS @ 20' C-C (TAPERS), 50' C-C (TANGENTS)
- DIRECTION INDICATOR BARRICADES W/ STEADY BURN LIGHTS @ 20' C-C
- FLAGGER
- SPEED DISPLAY TRAILER

REV. 2-8-2019

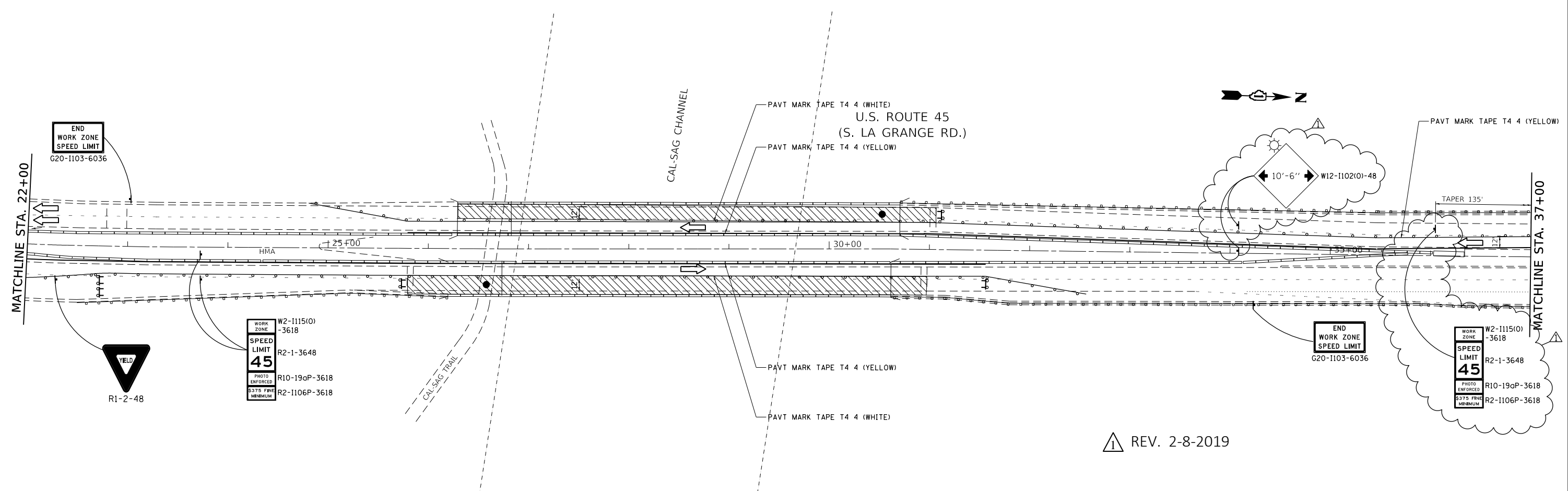
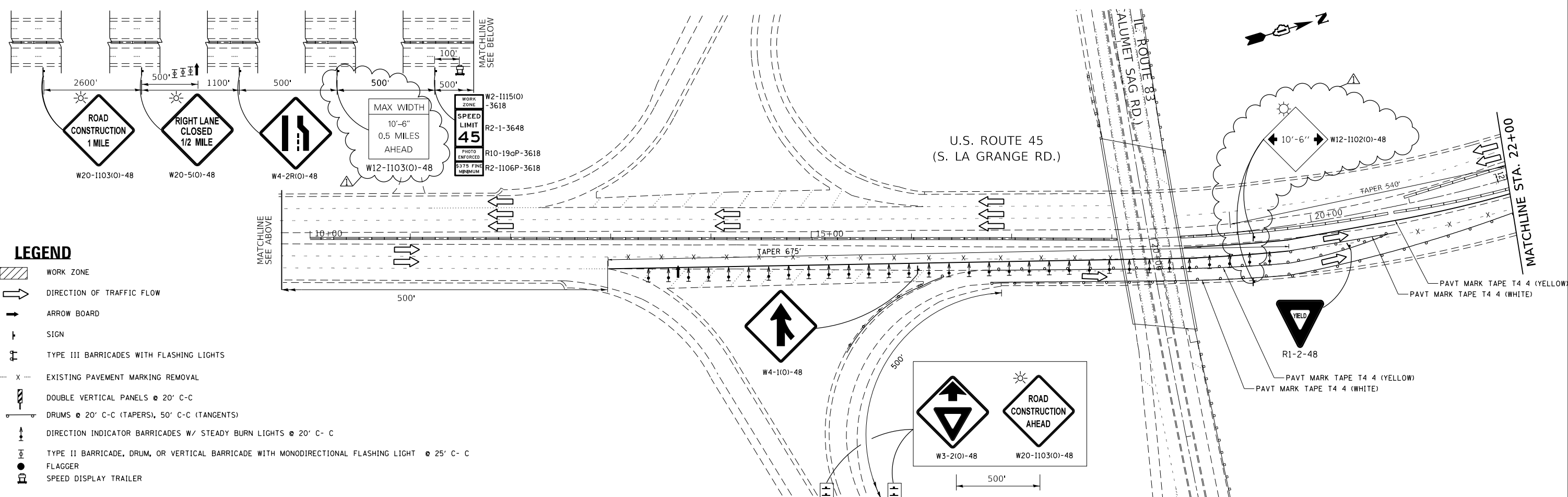
MODEL: Default
FILE NAME: p:\u0000\B&E\IDN\TEC\Illinois\pov\RW\DOT\Documents\DOT_Offices\IDN\1310\B\CAD\Drawings\131018-eh-ADT_Stage_12.dgn

| | | | |
|------------------------------|------------|-----------|----------|
| USER NAME = kainip | DESIGNED - | REVISED - | 2/8/2019 |
| DRAWN - | REVISOR - | | |
| PLOT SCALE = 100,0000' / in. | CHECKED - | REVISOR - | |
| PLOT DATE = 2/8/2019 | DATE - | REVISOR - | |

STATE OF ILLINOIS
DEPARTMENT OF TRANSPORTATION

MAINTENANCE OF TRAFFIC - STAGE I
U.S. ROUTE 45 (LA GRANGE RD.) AT CAL-SAG CHANNEL
SCALE: 1"=50' SHEET OF SHEETS STA. TO STA.

| F.A. RTE. | SECTION | COUNTY | TOTAL SHEETS | SHEET NO. |
|---------------------------|-------------------|--------|--------------|-----------|
| 330 | (511 & 525) B-R-1 | COOK | 21 | 6 |
| CONTRACT NO. 62G50 | | | | |
| ILLINOIS FED. AID PROJECT | | | | |



REV. 2-8-2019

MODEL: Default
 FILE NAME: P:\ILLINOIS\B&E\BIDDING\Illinois.gov\PW\DOT\Documents\BIDD\Office\BIDD\1\Projects\1310\BID\CAD\BIDD\Design\131018-shr-ADT Stage 34.dgn

| | | | |
|------------------------------|------------|-----------|----------|
| USER NAME = kainip | DESIGNED - | REVISED - | 2/8/2019 |
| | DRAWN - | REVISED - | |
| PLOT SCALE = 100,0000' / in. | CHECKED - | REVISED - | |
| PLOT DATE = 2/8/2019 | DATE - | REVISED - | |

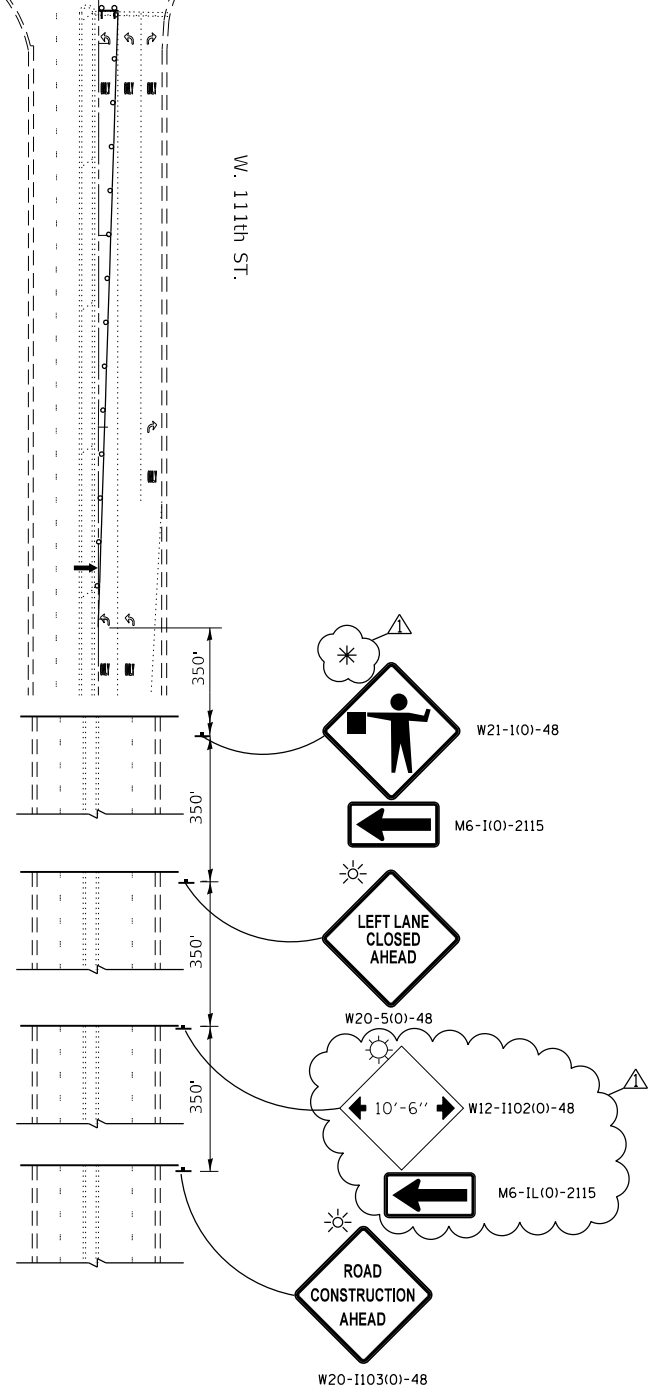
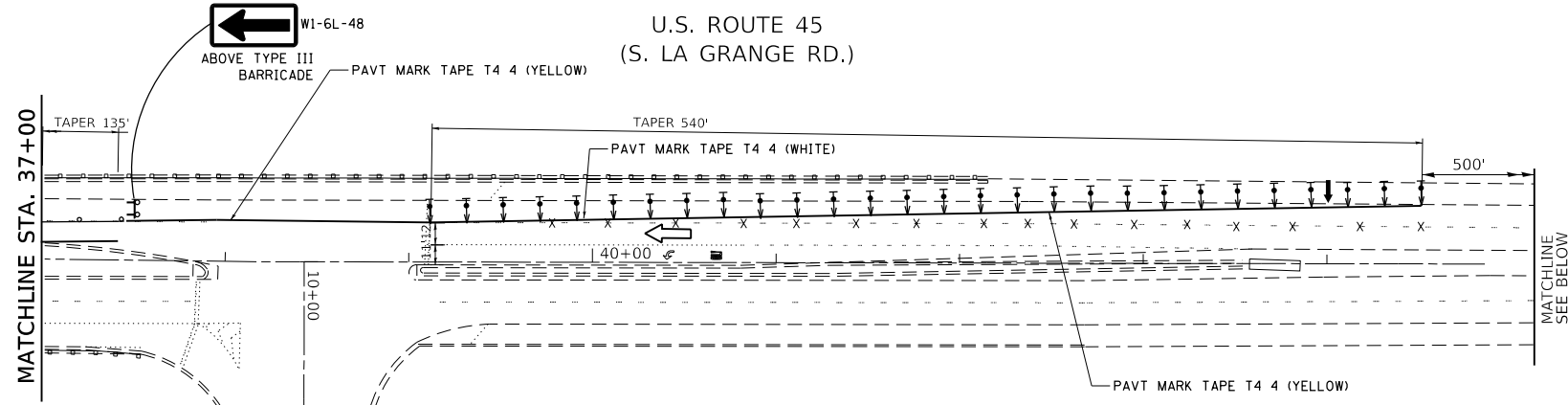
STATE OF ILLINOIS
DEPARTMENT OF TRANSPORTATION

MAINTENANCE OF TRAFFIC - STAGE II
U.S. ROUTE 45 (LA GRANGE RD.) AT CAL-SAG CHANNEL
 SCALE: 1"=50' SHEET OF SHEETS STA. TO STA.

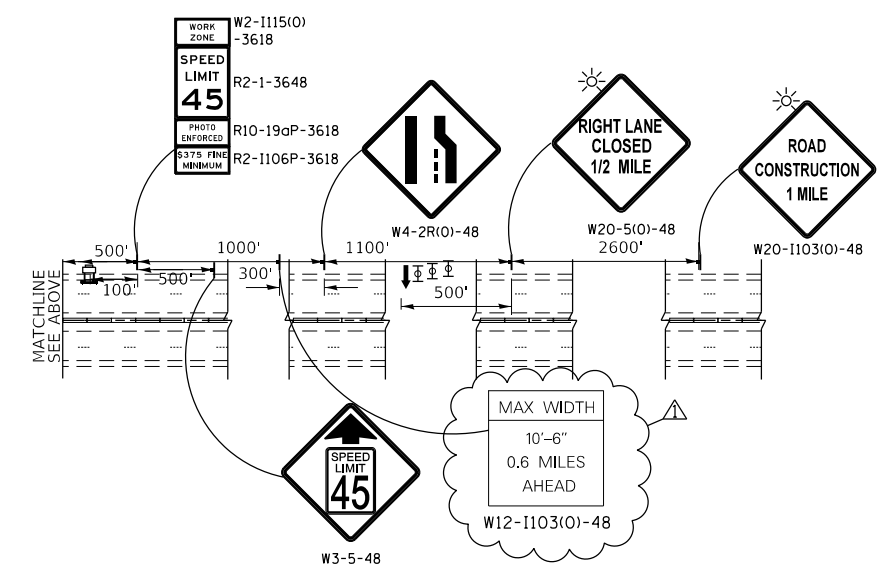
| F.A. RTE. | SECTION | COUNTY | TOTAL SHEETS | SHEET NO. |
|---------------------------|-------------------|--------|--------------|-----------|
| 330 | (511 & 525) B-R-1 | COOK | 21 | 7 |
| CONTRACT NO. 62G50 | | | | |
| ILLINOIS FED. AID PROJECT | | | | |



U.S. ROUTE 45
(S. LA GRANGE RD.)



* ONLY WHEN FLAGGER IS PRESENT



LEGEND

- WORK ZONE
- DIRECTION OF TRAFFIC FLOW
- ARROW BOARD
- SIGN
- TYPE III BARRICADES WITH FLASHING LIGHTS
- EXISTING PAVEMENT MARKING REMOVAL
- DOUBLE VERTICAL PANELS @ 20' C-C
- DRUMS @ 20' C-C (TAPERS), 50' C-C (TANGENTS)
- DIRECTION INDICATOR BARRICADES W/ STEADY BURN LIGHTS @ 20' C-C
- TYPE II BARRICADE, DRUM, OR VERTICAL BARRICADE WITH MONODIRECTIONAL FLASHING LIGHT @ 25' C-C
- FLAGGER
- SPEED DISPLAY TRAILER

1 REV. 2-8-2019

MODEL: Default
FILE NAME: p:\u0000\B&E\BID\NTEC\Illinois\gov\p\WIDOT\Documents\BID\Office\BID\ref\1\proj\cts\1310\B\CAD\BID\Design\131018-eh-ADT_Stage_3.dgn

| | | |
|------------------------------|------------|--------------------|
| USER NAME = kainip | DESIGNED - | REVISED - 2/8/2019 |
| PLOT SCALE = 100.0000' / in. | DRAWN - | REVISED - |
| PLOT DATE = 2/8/2019 | CHECKED - | REVISED - |
| | DATE - | REVISED - |

**STATE OF ILLINOIS
DEPARTMENT OF TRANSPORTATION**

**MAINTENANCE OF TRAFFIC - STAGE II
U.S. ROUTE 45 (LA GRANGE RD.) AT CAL-SAG CHANNEL**

SCALE: 1"=50' SHEET OF SHEETS STA. TO STA.

| F.A. RTE. | SECTION | COUNTY | TOTAL SHEETS | SHEET NO. |
|---------------------------|-------------------|--------|--------------|-----------|
| 330 | (511 & 525) B-R-1 | COOK | 21 | 8 |
| CONTRACT NO. 62G50 | | | | |
| ILLINOIS FED. AID PROJECT | | | | |