

022

STATE OF ILLINOIS
DEPARTMENT OF TRANSPORTATION

F.A.P. RTE.	SECTION	COUNTY	TOTAL SHEETS	SHEET NO.
21	2018-026-RS-SW	DUPAGE	64	1
ILLINOIS CONTRACT NO. 62G64				

64 + 5 = 69 TOTAL SHEETS
D-91-325-18



FOR INDEX OF SHEETS, SEE SHEET NO. 2

THE IMPROVEMENT IS LOCATED IN THE VILLAGES OF ADDISON, BLOOMINGDALE & ROSELLE

TRAFFIC DATA:

2017

STA 12+27.5 TO STA 70+00

ADT = 31900

STA 70+00 - STA 165+00

ADT = 45000

STA 165+00 - STA 191+54

ADT = 37700

STA 12+27.5 TO STA 51+00

POSTED SPEED LIMIT = 40 MPH

STA 51+00 TO STA 147+00

POSTED SPEED LIMIT = 35 MPH

STA 147+00 TO STA 173+00

POSTED SPEED LIMIT = 45 MPH

STA 173+00 TO STA 191+54

POSTED SPEED LIMIT = 40 MPH

PROPOSED
HIGHWAY PLANS

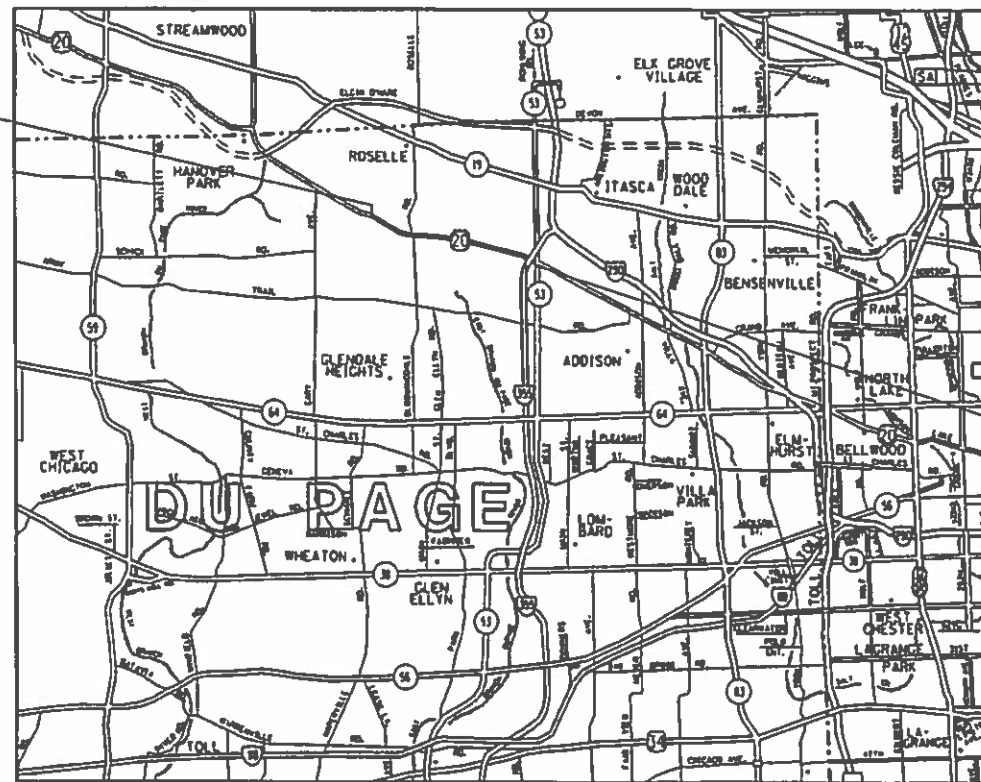
F.A.P. ROUTE 21 : US 20
W OF SUMMERFIELD DR. TO I-355
(VETERANS MEMORIAL TOLLWAY)
SECTION 2018-026-RS-SW
PROJECT NHPP-KGG5(618)
RESURFACING(3P), PEDESTRIAN RAMPS,
AND PAVEMENT PATCHING
DUPAGE COUNTY

C-91-248-18



LOCATION OF SECTION INDICATED THIS: -

PROJECT BEGINS
STA 12+27.5



PROJECT ENDS
STA 191+54



FULL SIZE PLANS HAVE BEEN PREPARED USING STANDARD ENGINEERING SCALES. REDUCED SIZED PLANS WILL NOT CONFORM TO STANDARD SCALES. IN MAKING MEASUREMENTS ON REDUCED PLANS, THE ABOVE SCALES MAY BE USED.

J.U.L.I.E.
JOINT UTILITY LOCATION INFORMATION FOR EXCAVATION
1-800-892-0123
OR 811

PROJECT ENGINEER : KARI SMITH (847) 705-4437
PROJECT MANAGER : FAWAD AQUEEL (847) 705 705-4247

CONTRACT NO. 62G64

GROSS LENGTH = 12949 FT. = 2.45 MILE
NET LENGTH = 12949 FT. = 2.45 MILE

STATE OF ILLINOIS
DEPARTMENT OF TRANSPORTATION
SUBMITTED December 6 2018
Anthony J. Dringley / AS REGIONAL ENGINEER
Feb 19 2019
[Signature] ENGINEER OF DESIGN AND ENVIRONMENT
Feb 20 19
[Signature] DIRECTOR OF HIGHWAYS PROJECT IMPLEMENTATION

PRINTED BY THE AUTHORITY
OF THE STATE OF ILLINOIS

INDEX OF SHEETS

SHEET NO.	DESCRIPTION
1	TITLE SHEET
2	INDEX OF SHEETS, HIGHWAY STANDARDS, AND GENERAL NOTES
3-6	SUMMARY OF QUANTITIES
7-8	TYPICAL SECTIONS
9-12	SCHEDULE OF QUANTITIES
13-19	ROADWAY AND PAVEMENT MARKING PLANS
20-20E	ADA DETAILS
21-31	DETECTOR LOOP REPLACEMENT PLANS
32	DETAILS FOR FRAMS AND LIDS ADJUSTMENT WITH MILLING (BD-08)
33	PAVEMENT PATCHING FOR HMA SURFACED PAVEMENT (BD-22)
34	CURB OR CURB AND GUTTER REMOVAL AND REPLACEMENT (BD-24)
35	BUTT JIONT AND HMA TAPER DETAILS (BD-32)
36	HMA TAPER AT EDGE OF PCC PAVEMENT (BD-33)
36-55	PRECAST CONCRETE SLABS (BD-57)
56	ENTRANCE AND EXIT RAMP CLOSURE DETAILS
57	TRAFFIC CONTROL AND PROTECTION FOR SIDE ROADS, INTERSECTIONS, AND DRIVEWAYS (TC-10)
58	TYPICAL APPLICATION FOR RAISED REFLECTIVE PAVEMENT MARKERS (TC-11)
59	DISTRICT ONE TYPICAL PAVEMENT MARKINGS (TC-13)
60	TRAFFIC CONTROL AND PROTECTION AT TURN BAYS (TO REMAIN OPEN TO TRAFFIC) (TC-14)
61	PAVEMENT MARKING LETTERS & SYMBOLS FOR TRAFFIC STAGING (TC-16)
62	TRAFFIC CONTROL DETAILS FOR FREE WAY SHOULDER CLOSURES AND PARTIAL RAMP CLOSURES (TC-17)
63	ARTERIAL ROAD INFORMATION SIGN (TC-22)
64	DISTRICT ONE DETECTOR LOOP INSTALLATION DETAILS FOR ROADWAY RESURFACING (TS-07)



HIGHWAY STANDARDS

STANDARD NO.	DESCRIPTION
000001-07	STANDARD SYMBOLS, ABBREVIATIONS AND PATTERNS
420701-03	PAVEMENT WELDED WIRE REINFORCEMENT
424001-11	PERPENDICULAR CURB RAMPS FOR SIDEWALKS
424006-04	DIAGONAL CURB RAMPS FOR SIDEWALKS
424021-05	DEPRESSED CORNER FOR SIDEWALKS
442101-09	CLASS B PATCHES
442201-03	CLASS C AND D PATCHES
604001-04	FRAMES AND LIDS TYPE 1
701006-05	OFF-RD OPERATIONS, 2L, 2W, 15' (4.5 M) TO 24" (600 MM) FROM PAVEMENT EDGE
701101-05	OFF -RD OPERATION, MULTILANE, 15' (4.5 m) TO 24" (600mm) FROM PAVEMENT EDGE
701301-04	LANE CLOSURE, 2L, 2W, SHORT TIME OPERATIONS
701306-04	LANE CLOSURE,2L,2W, SLOW MOVING OPERATION DAY ONLY, FOR SPEEDS >= 45 MPH
701311-03	LANE CLOSURE 2L, 2W MOVING OPERATIONS-DAY ONLY
701336-07	LANE CLOSURE,2L,2W, WORK AREAS IN SERIES, FOR SPEEDS>= 45 MPH
701422-10	LANE CLOSURE, MULTILANE INTERMITTENT OR MOVING SPEEDS >= 45MPH TO 55 MPH
701426-09	LANE CLOSURE, MULTILANE INTERMITTENT OR MOVING OPER. FOR SPEED>= 45MPH
701427-05	LANE CLOSURE, MULTILANE INTERMITTENT OR MOVING OPER. FOR SPEED < 40MPH
701501-06	URBAN LANE CLOSURE 2L, 2W, UNDIVIDED
701502-09	URBAN LANE CLOSURE,2L,2W, WITH BIDIRECTIONAL LEFT TURN LANE
701601-09	URBAN LANE CLOSURE, MULTILANE, 1W OR 2W WITH NON TRAVERSABLE MEDIAN
701606-10	URBAN SINGLE LANE CLOSURE, MULTILANE, 2W WITH MOUNTABLE MEDIAN
701701-10	URBAN LANE CLOSURE, MULTILANE INTERSECTION
701801-06	SIDEWALK, CORNER OR CROSSWALK CLOSURE
701901-08	TRAFFIC CONTROL DEVICES
886001-01	DETECTOR LOOP INSTALLATIONS

GENERAL NOTES

BEFORE STARTING ANY EXCAVATION, THE CONTRACTOR SHALL CALL "J.U.L.I.E." AT (800) 892-0123 OR 811 FOR FIELD LOCATIONS OF BURIED ELECTRIC, TELEPHONE AND GAS UTILITIES. 48 HOUR NOTIFICATION IS REQUIRED.

THE CONTRACTOR SHALL COORDINATE CONSTRUCTION ACTIVITIES WITH UTILITY COMPANIES AND THE VILLAGES OF ADDISON, BLOOMINGDALE AND ROSEDALE.

THE CONTRACTOR SHALL CONTACT THE DISTRICT ONE TRAFFIC CONTROL SUPERVISOR AT (847) 705-4470 A MINIMUM OF 72 HOURS IN ADVANCE OF BEGINNING WORK.

THE CONTRACTOR WILL NOT BE ALLOWED TO SET UP A YARD OR FIELD OFFICE ON STATE PROPERTY WITHOUT WRITTEN PERMISSION FROM THE DEPARTMENT.

TWO WEEKS PRIOR TO THE PLACEMENT OF PERMANENT PAVEMENT MARKINGS THE RESIDENT ENGINEER SHALL CONTACT MR. DON CHIARUGI, ARTERIAL TRAFFIC FIELD ENGINEER, AT don.chiarugi@illinois.gov

ANY PAVEMENT MARKINGS AND RAISED REFLECTIVE PAVEMENT MARKERS OBLITERATED BY MILLING AND RESURFACING OPERATIONS ON SIDE STREETS AND ENTRANCES SHALL BE REPLACED AND PAID FOR IN KIND.

ALL DAMAGE TO EXISTING PAVEMENT MARKINGS OR RAISED REFLECTIVE PAVEMENT MARKERS OUTSIDE THE REMOVAL LINE SHOWN ON THE PLANS SHALL BE REPLACED AT NO ADDITIONAL COST TO THE DEPARTMENT.

BEFORE BEGINNING ANY WORK, THE CONTRACTOR SHALL RETAIN AND RECORD FOR FUTURE REFERENCE, ALL EXISTING PAVEMENT MARKING LINES (AND RAISED REFLECTIVE PAVEMENT MARKERS) IN ORDER THAT THESE LOCATIONS CAN BE RE-ESTABLISHED FOR STRIPING. EXACT LOCATIONS OF ALL PAVEMENT MARKINGS SHALL BE AS DIRECTED BY THE ENGINEER.

ALL FINAL PAVEMENT PATCHING LOCATIONS WILL BE DETERMINED IN THE FIELD BY THE RESIDENT ENGINEER.

LOCATION OF COMBINATION CONCRETE CURB AND GUTTER REMOVAL AND REPLACEMENT WILL BE DETERMINED IN THE FIELD BY THE RESIDENT ENGINEER.

DRAINAGE ADJUSTMENT OR RECONSTRUCTION LOCATIONS WILL BE DETERMINED IN THE FIELD BY THE RESIDENT ENGINEER.

IT SHALL BE THE CONTRACTOR'S RESPONSIBILITY TO VERIFY ALL DIMENSIONS AND CONDITIONS EXISTING IN THE FIELD PRIOR TO CONSTRUCTION AND ORDERING OF MATERIALS.

FRAMES AND GRATES ADJUSTMENT OF PRIVATE UTILITIES WITHIN THE LIMITS OF THE IMPROVEMENTS SHALL BE DONE BY THEIR RESPECTIVE OWNERS AND ARE NOT PART OF THIS CONTRACT.

THE CONTRACTOR SHALL BE REQUIRED TO PROVIDE ACCESS TO ABUTTING PROPERTY AT ALL TIMES DURING THE CONSTRUCTION OF THIS PROJECT.

DO NOT SCALE PLANS FOR CONSTRUCTION DIMENSIONS.

PAVEMENT MARKING TAPE, TYPE III SHALL BE USED FOR SHORT TERM PAVEMENT MARKINGS ON ALL FINAL SURFACES.

WHEN THE MILLED PAVEMENT IS OPEN TO TRAFFIC THE MAXIMUM GRADE DIFFERENTIAL BETWEEN PASSES OF THE MILLING MACHINE SHALL NOT EXCEED 1/2 INCHES (40 mm) WHERE THE SPEED LIMIT IS 40 MPH (80 km/h) OR LESS AND 1 INCH (25 mm) WHERE THE SPEED LIMIT IS GREATER THAN 40 MPH (80 km/h). WITH WRITTEN APPROVAL OF THE ENGINEER, A MAXIMUM GRADE DIFFERENTIAL OF 3 INCHES (75 mm) MAY BE ALLOWED IF THE EDGE OF THE MILLING IS SLOPED A MINIMUM 1:3 (V:H).

BUTT JOINTS WILL BE INSTALLED AT THE ENDS OF ALL RESURFACING (WHERE RESURFACING MEETS EXISTING PAVEMENT) ACCORDING TO THE "BUTT JOINT AND HOT-MIX ASPHALT TAPER DETAILS" SHEET INCLUDED IN THE PLANS, UNLESS OTHERWISE SPECIFIED.

THE CONTRACTOR SHALL MAINTAIN PEDESTRIAN ACCESS AT ALL TIMES DURING CONSTRUCTION

CONTACT ROADSIDE DEVELOPMENT UNIT AT 847.705.4171 AT LEAST 2 WEEKS PRIOR TO BEGINNING LANDSCAPE AND FORESTRY WORK FOR LAYOUT.

ANY DETECTOR LOOPS DAMAGED BY PCC PATCHING OR PCC SURFACE REMOVAL VARIABLE DEPTH SHALL BE REPLACED IN KING. IT SHALL BE THE RESPONSIBILITY OF THE CONTRACTOR TO QUANTIFY LOOP REPLACEMENTS NEEDED AND PROVIDE THE RESIDENT ENGINEER THIS INFO PRIOR TO REMOVAL.

REV. - MS

FILE NAME =	USER NAME = khans	DESIGNED -	REVISED -	STATE OF ILLINOIS DEPARTMENT OF TRANSPORTATION	INDEX OF SHEETS, STATE STANDARS AND GENERAL NOTES	F.A.P. RTE.	SECTION	COUNTY	TOTAL SHEETS	SHEET NO.	
pw:\IL\084EBIDINTEG.illinois.gov\PIDOT\Documents\DOT Offices\District 1\Projects\1325\Drawings\Design\132518-sh-t-genote.dgn	DRWN	CHECKED -	REVISED -			21	2018-026-RS-SW	DUPAGE	64	2	
Default	PLOT SCALE = 100.0000' / in.	DATE -	REVISED -			CONTRACT NO. 62G64					
	PLOT DATE = 12/13/2018	DATE -	REVISED -			SCALE:	SHEET	OF	SHEETS	STA.	TO

URBAN

URBAN

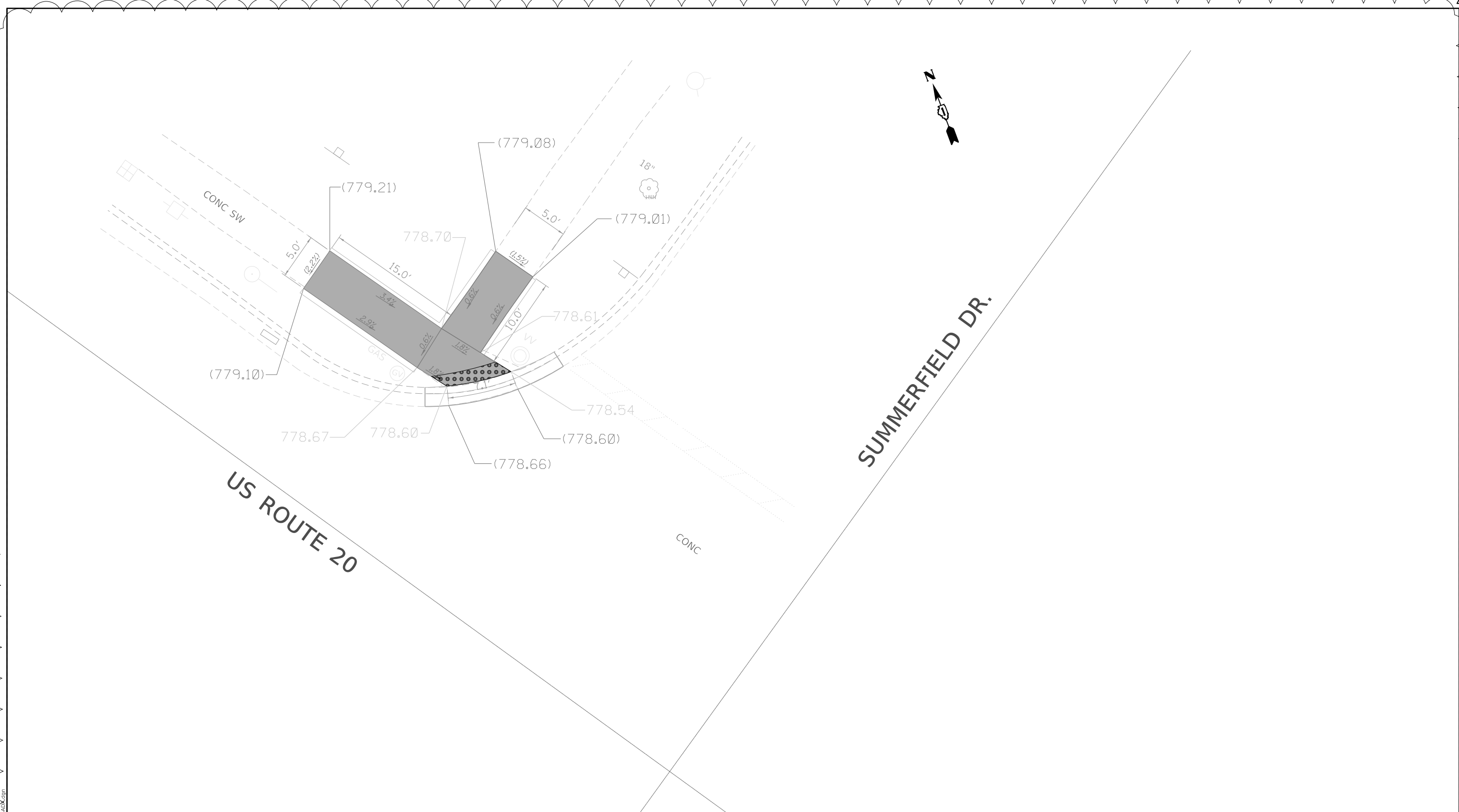
SUMMARY OF QUANTITIES			TOTAL QUANTITIES	0005 80% FED 20% STATE	CONSTRUCTION TYPE CODE				
CODE NO	ITEM	UNIT							
* X2700004	PREFORMED PLASTIC PAVEMENT MARKING, TYPE B - LINE 7"	FOOT	8430	8430					
X4060004	POLYMERIZED HOT-MIX ASPHALT SURFACE COURSE, STONE MATRIX ASPHALT, 9.5, N80	TON	7960	7960					
X4400100	PORTLAND CEMENT CONCRETE SURFACE REMOVAL (VARIABLE DEPTH)	SO YD	18400	18400					
X4405030	LONGITUDINAL PARTIAL DEPTH REMOVAL 3"	FOOT	7020	7020					
X4420900	LONGITUDINAL PARTIAL DEPTH PATCHING	TON	263	263					
X4423015	DOWEL BARS 1 1/2" RETROFIT	EACH	1400	1400					
X5537800	STORM SEWERS TO BE CLEANED 12"	FOOT	1710	1710					
X6030310	FRAMES AND LIDS TO BE ADJUSTED (SPECIAL)	EACH	19	19					
X7030005	TEMPORARY PAVEMENT MARKING REMOVAL	SO FT	15955	15955					
* X7030070	GROOVING FOR RECESSED PAVEMENT MARKING 5"	FOOT	8430	8430					
XZ043900	PREFORMED JOINT FILLER REMOVAL	FOOT	2750	2750					
Z0004562	COMBINATION CONCRETE CURB AND GUTTER REMOVAL AND REPLACEMENT	FOOT	2400	2400					
Z0018500	DRAINAGE STRUCTURES TO BE CLEANED	EACH	57	57					

SUMMARY OF QUANTITIES			TOTAL QUANTITIES		CONSTRUCTION TYPE CODE				
CODE NO	ITEM	UNIT							
Z0030850	TEMPORARY INFORMATION SIGNING	SO FT	103	103					
Z0033700	LONGITUDINAL JOINT SEALANT	FOOT	28070	28070					
Z0064800	SELECTIVE CLEARING	UNIT	25.6	25.6					
Ø Z0076600	TRAINEES	HOUR	1000	1000					
Ø Z0076604	TRAINEES TRAINING PROGRAM GRADUATE	HOUR	1000	1000					

* X7030070 GROOVING FOR RECESSED PAVEMENT MARKING
5"

* SPECIALTY ITEM Ø 0042

REV. - MS



REFERENCE BENCH MARK ELEV 780.841
 BENCHMARK: TOP SPINDAL OF FIRE HYDRANT
 LOCATION: NORTH WEST CORNER OF US RTE. 20 AND SUMMERFIELD DR.

LEGEND

	EXISTING LENGTH		PROPOSED SIDEWALK
	PROPOSED SIDE CURB		DETECTABLE WARNINGS
	EXISTING ELEVATION/SLOPE		SIDEWALK REMOVAL REPLACE W/TOPSOIL & SOD

REFERENCE BENCH MARK ELEV 780.841
 BENCHMARK: TOP SPINDAL OF FIRE HYDRANT
 LOCATION: NORTH WEST CORNER OF US RTE. 20 AND SUMMERFIELD DR.

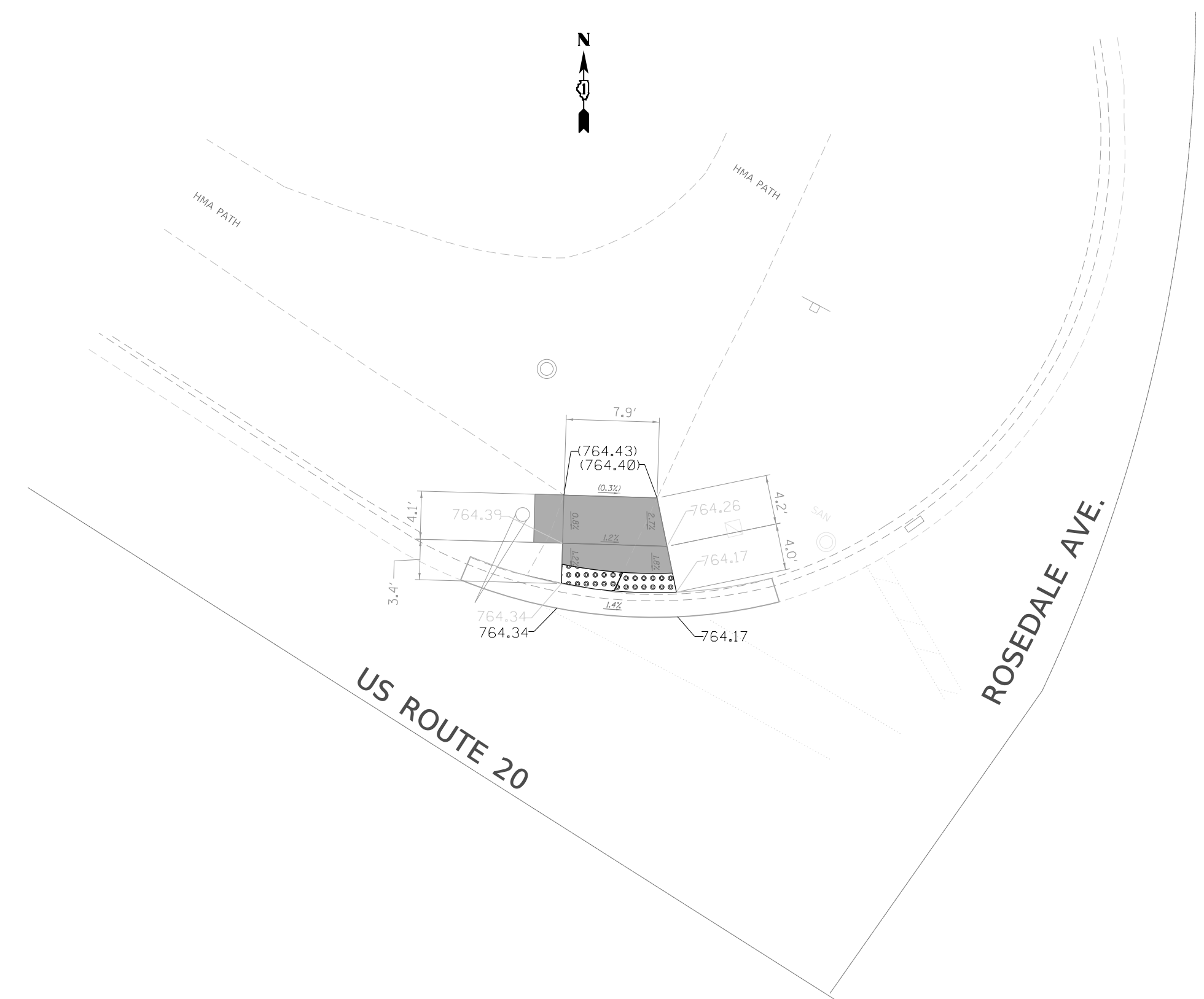
USER NAME = josephm	DESIGNED -	REVISED -	2/20/19
	DRAWN -	REVISED -	
PLOT SCALE = 10.0000' / in.	CHECKED -	REVISED -	
PLOT DATE = 2/20/2019	DATE -	REVISED -	

**STATE OF ILLINOIS
 DEPARTMENT OF TRANSPORTATION**

**ADA RAMP DETAILS
 US ROUTE 20 AT SUMMERFIELD DR (NORTHWEST CORNER)**

SCALE: NONE SHEET OF SHEETS STA. TO STA.

F.A.P. RTE.	SECTION	COUNTY	TOTAL SHEETS	SHEET NO.
21	2018-026-R5-SW	DUPAGE	64	20
ILLINOIS FED. AID PROJECT			CONTRACT NO. 62G64	



REFERENCE BENCH MARK ELEV 767.518
 BENCHMARK: TOP SPINDAL OF FIRE HYDRANT
 LOCATION: NORTH EAST CORNER OF US RTE. 20 AND ROSEDALE AVE

LEGEND

	EXISTING LENGTH		PROPOSED SIDEWALK
	PROPOSED SIDE CURB		DETECTABLE WARNINGS
	EXISTING ELEVATION/SLOPE		SIDEWALK REMOVAL REPLACE W/TOPSOIL & SOD

REFERENCE BENCH MARK ELEV 767.518
 BENCHMARK: TOP SPINDAL OF FIRE HYDRANT
 LOCATION: NORTH EAST CORNER OF US RTE. 20 AND ROSEDALE AVE

USER NAME = josephm	DESIGNED -	REVISED -	2/20/19
	DRAWN -	REVISED -	
PLOT SCALE = 10.0000 ' / in.	CHECKED -	REVISED -	
PLOT DATE = 2/20/2019	DATE -	REVISED -	

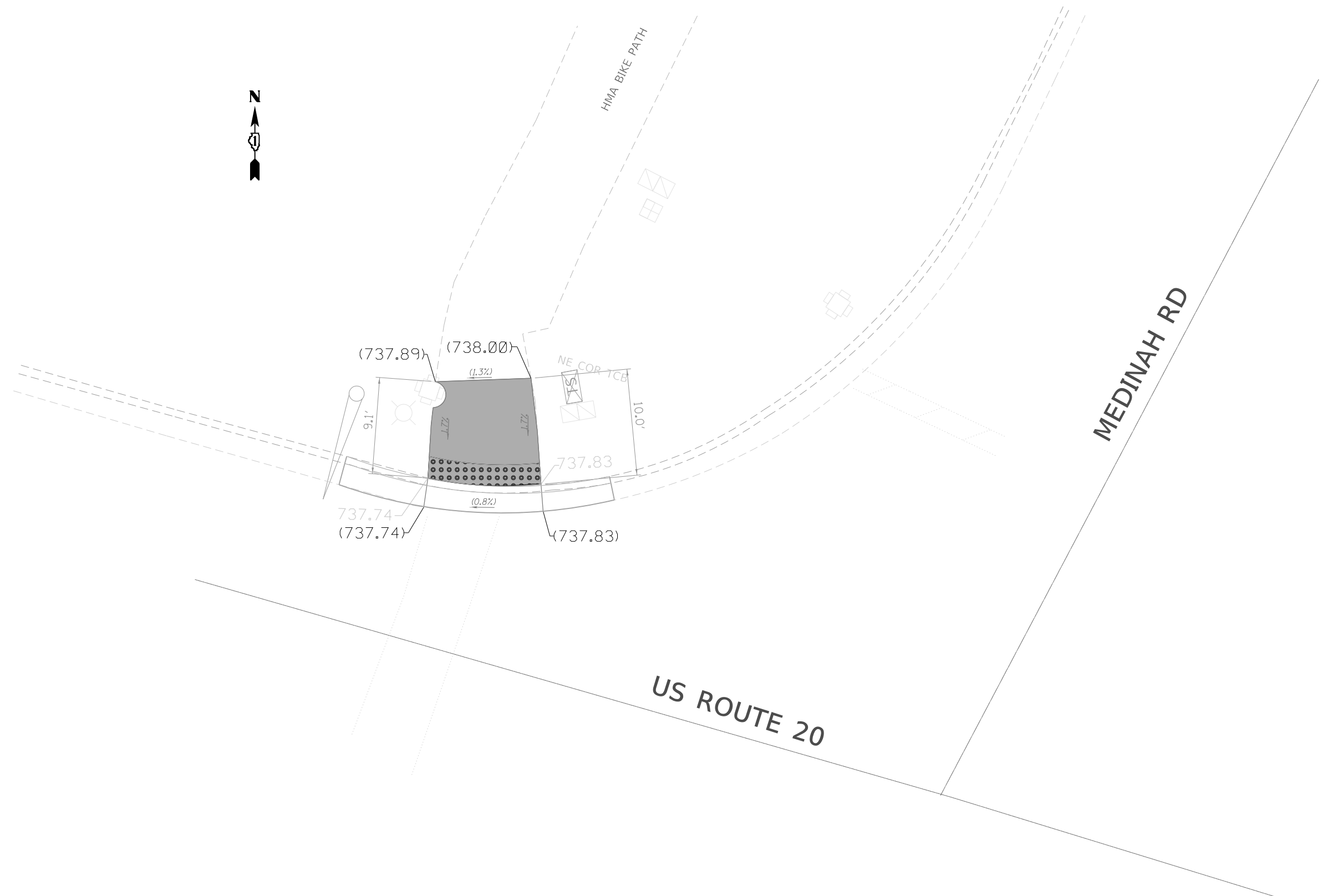
**STATE OF ILLINOIS
 DEPARTMENT OF TRANSPORTATION**

**ADA RAMP DETAILS
 US ROUTE 20 AT ROSEDALE AVE (NORTHWEST CORNER)**

SCALE: NONE SHEET OF SHEETS STA. TO STA.

F.A.P. RTE.	SECTION	COUNTY	TOTAL SHEETS	SHEET NO.
346	2017-032RS	LAKE	64	20B
CONTRACT NO. 62G64				

ILLINOIS FED. AID PROJECT



REFERENCE BENCH MARK ELEV 738.410
 BENCHMARK: CUT SQUARE ON TRAFFIC CONTROL BOX
 LOCATION: NORTH WEST CORNER OF US RTE. 20 AND MEDINAH RD

LEGEND

- xx.xx' EXISTING LENGTH
- PROPOSED SIDE CURB
- () EXISTING ELEVATION/SLOPE
- PROPOSED SIDEWALK
- DETECTABLE WARNINGS
- SIDEWALK REMOVAL
REPLACE W/TOPSOIL & SOD

REFERENCE BENCH MARK ELEV 738.410
 BENCHMARK: CUT SQUARE ON TRAFFIC CONTROL BOX
 LOCATION: NORTH WEST CORNER OF US RTE. 20 AND MEDINAH RD

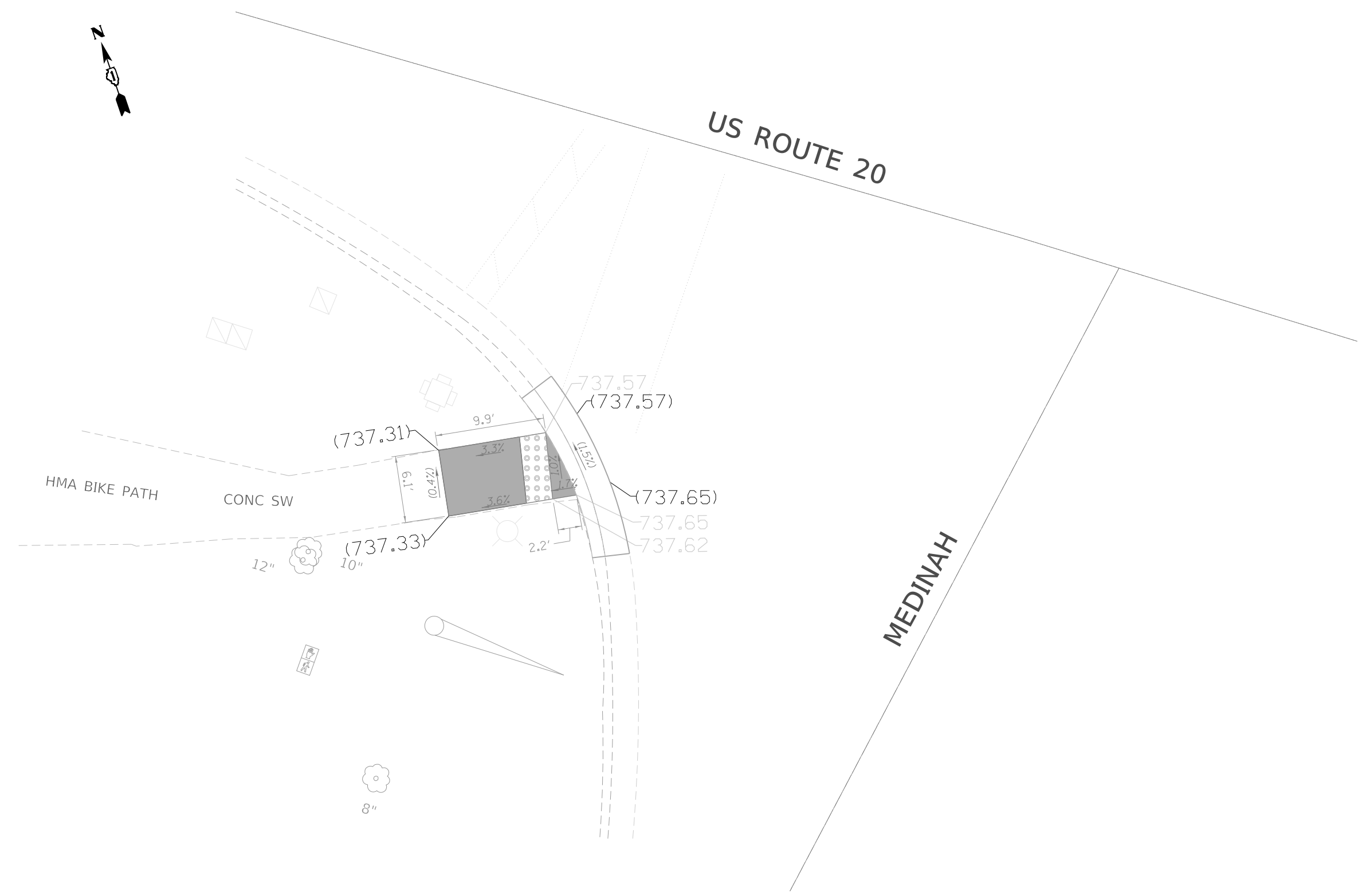
USER NAME = josephm	DESIGNED -	REVISED - A 2/20/19
	DRAWN -	REVISED -
PLOT SCALE = 10.0000 ' / in.	CHECKED -	REVISED -
PLOT DATE = 2/20/2019	DATE -	REVISED -

**STATE OF ILLINOIS
 DEPARTMENT OF TRANSPORTATION**

**ADA RAMP DETAILS
 US ROUTE 20 AT MEDINAH (NORTHWEST CORNER)**

SCALE: NONE SHEET OF SHEETS STA. TO STA.

F.A.P. RTE.	SECTION	COUNTY	TOTAL SHEETS	SHEET NO.
346	2017-032RS	LAKE	64	20C
CONTRACT NO. 62G64				



REFERENCE BENCH MARK ELEV 738.410
 BENCHMARK: CUT SQUARE ON TRAFFIC CONTROL BOX
 LOCATION: NORTH WEST CORNER OF US RTE. 20 AND MEDINAH RD

LEGEND

	EXISTING LENGTH		PROPOSED SIDEWALK
	PROPOSED SIDE CURB		DETECTABLE WARNINGS
	EXISTING ELEVATION/SLOPE		SIDEWALK REMOVAL REPLACE W/TOPSOIL & SOD

REFERENCE BENCH MARK ELEV 738.410
 BENCHMARK: CUT SQUARE ON TRAFFIC CONTROL BOX
 LOCATION: NORTH WEST CORNER OF US RTE. 20 AND MEDINAH RD

USER NAME = josephm	DESIGNED -	REVISED -	2/20/19
	DRAWN -	REVISED -	
PLOT SCALE = 10.0000 ' / in.	CHECKED -	REVISED -	
PLOT DATE = 2/20/2019	DATE -	REVISED -	

**STATE OF ILLINOIS
 DEPARTMENT OF TRANSPORTATION**

**ADA RAMP DETAILS
 US ROUTE 20 AT MEDINAH (SOUTHWEST CORNER)**

SCALE: NONE SHEET OF SHEETS STA. TO STA.

F.A.P. RTE.	SECTION	COUNTY	TOTAL SHEETS	SHEET NO.
346	2017-032RS	LAKE	64	20D
CONTRACT NO. 62G64				

ILLINOIS FED. AID PROJECT

