

F.A.I. RTE.	SECTION	COUNTY	TOTAL SHEETS	SHEET NO.
255	67-(1,2,3)RS-1	MONROE	8	1
		ILLINOIS	CONTRACT NO. 76M10	

03-08-2019 LETTING ITEM 044

STATE OF ILLINOIS  
DEPARTMENT OF TRANSPORTATION

**INDEX OF SHEETS**

- 1 COVER
- 2 HIGHWAY STANDARDS, GENERAL NOTES, & COMMITMENTS
- 3 SUMMARY OF QUANTITIES
- 4-6 TYPICAL SECTIONS
- 7 SCHEDULE OF QUANTITIES
- 8 MISCELLANEOUS DETAILS

FOR LIST OF HIGHWAY STANDARDS, SEE SHEET NO.2

**TRAFFIC DATA**

2017 ADT=66500 (ACTUAL)  
2018 ADT=67200 (ESTIMATED)  
2038 ADT=82000 (ESTIMATED)  
SU=1.9% MU=9.0%

**PROPOSED  
HIGHWAY PLANS**

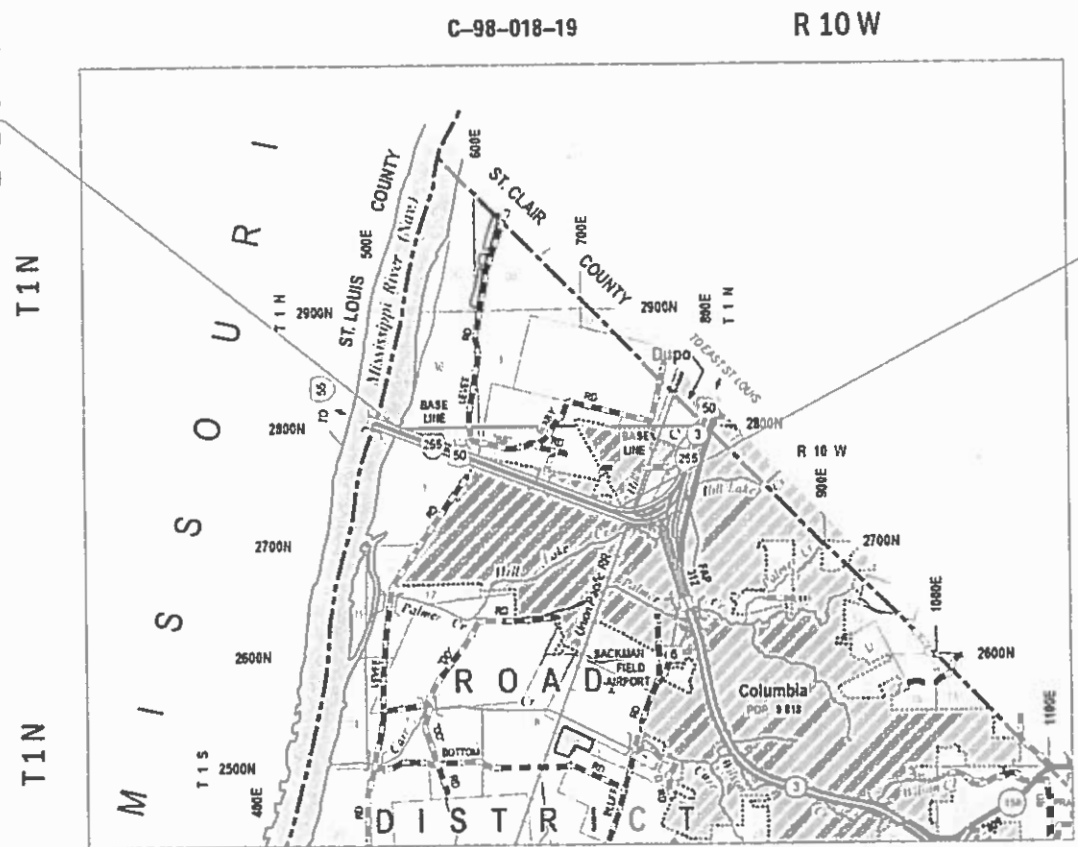
FAI ROUTE 255 (I-255)  
SECTION 67-(1,2,3)RS-1  
PROJECT NHPP-EPK(058)  
ULTRA-THIN OVERLAY

MONROE COUNTY



BEGIN PROJECT  
STA. 690+56  
LAT: 38.484169  
LONG: -90.266619

END PROJECT  
STA. 587+60  
LAT: 38.474804  
LONG: -90.233769



FULL SIZE PLANS HAVE BEEN PREPARED USING STANDARD ENGINEERING SCALES. REDUCED SIZED PLANS WILL NOT CONFORM TO STANDARD SCALES. IN MAKING MEASUREMENTS ON REDUCED PLANS, THE ABOVE SCALES MAY BE USED.

J.U.L.I.E.  
JOINT UTILITY LOCATING INFORMATION FOR EXCAVATORS  
1-800-892-0123  
OR 811



GROSS LENGTH = 10,296.00 FT. = 1.950 MILE  
NET LENGTH = 10,296 FT. = 1.950 MILE

STATE OF ILLINOIS  
DEPARTMENT OF TRANSPORTATION

SUBMITTED *Nov 30 2018*  
*Jeffrey Z. Kan* REGIONAL ENGINEER

*Feb 1 2019*  
*[Signature]* ENGINEER OF DESIGN AND ENVIRONMENT

*Feb 1 2019*  
*[Signature]* DIRECTOR OF HIGHWAYS PROJECT IMPLEMENTATION

PRINTED BY THE AUTHORITY  
OF THE STATE OF ILLINOIS

PROJECT ENGINEER: TIM PADGETT (618) 346-3325  
PROJECT MANAGER: MESERET SIMA (618) 346-3141

CONTRACT NO. 76M10

## HIGHWAY STANDARDS

000001-07	STANDARD SYMBOLS, ABBREVIATIONS AND PATTERNS
001006	DECIMAL OF AN INCH AND OF A FOOT
701101-05	OFF-ROAD OPERATIONS, MULTILANE, 15' TO 24" FROM PAVEMENT EDGE
701400-09	APPROACH TO LANE CLOSURE, FREEWAY/EXPRESSWAY
701401-12	LANE CLOSURE, FREEWAY/EXPRESSWAY
701411-09	LANE CLOSURE, MULTILANE, AT ENTRANCE OR EXIT RAMP, FOR SPEEDS > 45 MPH
701422-10	LANE CLOSURE, MULTILANE, FOR SPEEDS ≥ 45 MPH TO 55 MPH
701426-09	LANE CLOSURE, MULTILANE, INTERMITTENT OR MOVING OPERATIONS, FOR SPEEDS > 45 MPH
701428-01	TRAFFIC CONTROL SETUP AND REMOVAL FREEWAY/EXPRESSWAY
701446-09	TWO LANE CLOSURE, FREEWAY/EXPRESSWAY
701901-08	TRAFFIC CONTROL DEVICES
780001-05	TYPICAL PAVEMENT MARKINGS
781001-04	TYPICAL APPLICATIONS RAISED REFLECTIVE PAVEMENT MARKERS
782006	GUARDRAIL AND BARRIER WALL REFLECTOR MOUNTING DETAILS

## GENERAL NOTES

- ILLINOIS STATE LAW REQUIRES A 48-HOUR NOTICE TO BE GIVEN TO UTILITIES BEFORE DIGGING. FIELD MARKING OF FACILITIES MAY BE OBTAINED BY CONTACTING J.U.L.I.E. (1-800-892-0123 OR 811) OR FOR NON-MEMBERS THE UTILITY COMPANY DIRECTLY.
- THE CONTRACTOR SHALL VERIFY ALL DIMENSIONS AND CONDITIONS IN THE FIELD PRIOR TO CONSTRUCTION AND ORDERING OF MATERIALS.
- THE PROPOSED PAVEMENT MARKINGS SHALL BE PLACED IN THE SAME LOCATION AS EXISTING OR AS DIRECTED BY THE RESIDENT ENGINEER.
- THE ILLINOIS DEPARTMENT OF TRANSPORTATION STRONGLY ENCOURAGES THE PRIME CONTRACTOR AND THEIR APPROVED SUB-CONTRACTORS TO HIRE MINORITY, WOMEN AND DISADVANTAGED INDIVIDUALS FROM ITS FEDERALLY FUNDED HIGHWAY CONSTRUCTION CAREERS TRAINING PROGRAM (HCCTP) TO HELP MEET WORKFORCE AND TRAINEE GOALS. THIS PROGRAM IS TRAINING MINORITIES, WOMEN AND DISADVANTAGED INDIVIDUALS IN HIGHWAY CONSTRUCTION-RELATED SKILLS, E.G., MATH FOR THE TRADES, JOB READINESS, TECHNICAL SKILLS COURSEWORK (CARPENTRY, CONCRETE FLATWORK, BLUEPRINT READING, SITE PLANS, SITE WORK, TOOLS USE, ETC.) AND OSHA 10 HOUR CERTIFICATION, TO PREPARE THEM FOR A CAREER IN THE HIGHWAY CONSTRUCTION TRADES. GRADUATES ARE WELL-TRAINED AND READY TO BECOME PRODUCTIVE ENTRY-LEVEL CONSTRUCTION WORKERS. PLEASE CONTACT THE DISTRICT 8 EEO OFFICE AT 618-346-3360 AND/OR THE HCCTP COORDINATOR AT 618-874-6528 TO LEARN MORE ABOUT THE PROGRAM AND FOR ASSISTANCE IN MEETING WORKFORCE AND TRAINEE GOALS.
- ULTRA-THIN OVERLAY SHALL NOT COVER EXISTING RUMBLE STRIP IN THE SHOULDER.
- THE REFLECTIVE PAVEMENT MARKERS SHALL NOT BE PLACED IN THE SAME LOCATION AS THEY WERE PREVIOUS.
- THREE CHANGEABLE MESSAGE BOARDS SHALL BE REQUIRED FOR THIS PROJECT. THEY SHALL BE PLACED 2 WEEKS PRIOR TO ANY LANE CLOSURE AND SHALL REMAIN UP FOR THE DURATION OF THE PROJECT. THE CHANGEABLE MESSAGE BOARDS SHALL BE PLACED ALONG I-255 OR AT THE DIRECTION OF THE ENGINEER.
- ANY SHORT TERM PAVEMENT MARKING ON FINAL SURFACE INCLUDING SHOULDER SHALL BE TAPED.
- 50 GUARDRAIL REFLECTORS, TYPE A HAVE BEEN INCLUDED TO REPLACE MISSING/DAMAGED GUARDRAIL REFLECTORS WITHIN THE PROJECT LIMITS.

## COMMITMENTS

NONE

FILE NAME =	USER NAME = sjmam	DESIGNED -	REVISED -	<b>STATE OF ILLINOIS DEPARTMENT OF TRANSPORTATION</b>	<b>HIGHWAY STANDARDS, GENERAL NOTES, &amp; COMMITMENTS</b>	F.A.I. RTE.	SECTION	COUNTY	TOTAL SHEETS	SHEET NO.
p:\11\084EBIDINTEG.illinois.gov\PWIDOT\Documents\DOT Offices\District 8\Projects\0876M10\Drawings\AD\Drawings\0876M10-sht-plan.dwg		CHECKED -	REVISED -			255	67-(1,2,3)RS-1	MONROE	8	2
Default	PLOT SCALE = 100.0000' / 1in.	DATE -	REVISED -			CONTRACT NO. 76M10				
	PLOT DATE = 11/30/2018	DATE -	REVISED -			SCALE:	SHEET 1 OF 1 SHEETS	STA.	TO STA.	ILLINOIS FED. AID PROJECT

CODE NO.	ITEM	UNIT	TOTAL QUANTITY	CONSTR. CODE	
				ROADWAY 0005 URBAN	90% FED 10% STATE
40600985	PORTLAND CEMENT CONCRETE SURFACE REMOVAL - BUTT JOINT	SQ YD	246	246	
40600990	TEMPORARY RAMP	SQ YD	41	41	
67100100	MOBILIZATION	L SUM	1	1	
70100420	TRAFFIC CONTROL AND PROTECTION, STANDARD 701411	EACH	2	2	
70100800	TRAFFIC CONTROL AND PROTECTION, STANDARD 701401	L SUM	1	1	
70100815	TRAFFIC CONTROL AND PROTECTION, STANDARD 701446	L SUM	1	1	
70107025	CHANGEABLE MESSAGE SIGN	CAL DA	132	132	
70200100	NIGHTTIME WORK ZONE LIGHTING	L SUM	1	1	
70300100	SHORT TERM PAVEMENT MARKING	FOOT	5958	5958	
70300150	SHORT TERM PAVEMENT MARKING REMOVAL	SQ FT	1986	1986	
70300240	TEMPORARY PAVEMENT MARKING - LINE 6"	FOOT	54358	54358	
* 78000400	THERMOPLASTIC PAVEMENT MARKING - LINE6"	FOOT	54358	54358	
* 78100100	RAISED REFLECTIVE PAVEMENT MARKER	EACH	1214	1214	
* 78200005	GUARDRAIL REFLECTORS, TYPE A	EACH	50	50	

CODE NO.	ITEM	UNIT	TOTAL QUANTITY	CONSTR. CODE	
				ROADWAY 0005 URBAN	90% FED 10% STATE
78300200	RAISED REFLECTIVE PAVEMENT MARKER REMOVAL	EACH	1214	1214	
40600250	RAPID SETTING POLYMER MODIFIED EMULSION	POUND	162453	162453	
X0326129	ULTRA-THIN HOT-MIX ASPHALT SURFACE COURSE	SQ YD	95002	95002	
Ø Z0076600	TRAINEES	HOUR	1500	1500	
X0327979	PAVEMENT MARKING REMOVAL - GRINDING	SQ FT	27179	27179	
Ø Z0076604	TRAINEES TRAINING PROGRAM GRADUATE	HOUR	1500	1500	
X7030005	TEMPORARY PAVEMENT MARKING REMOVAL	SQ FT	18119	18119	

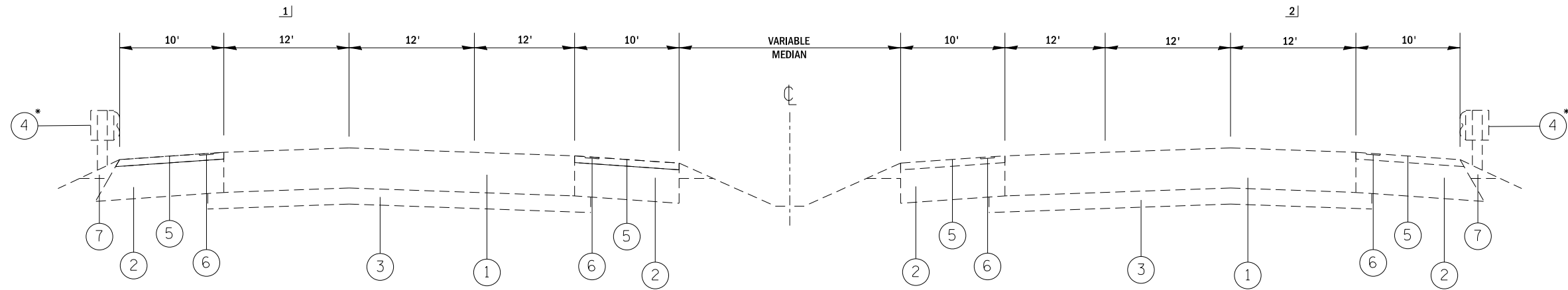
Ø 0042

\* SPECIALTY ITEM

REV. - MS

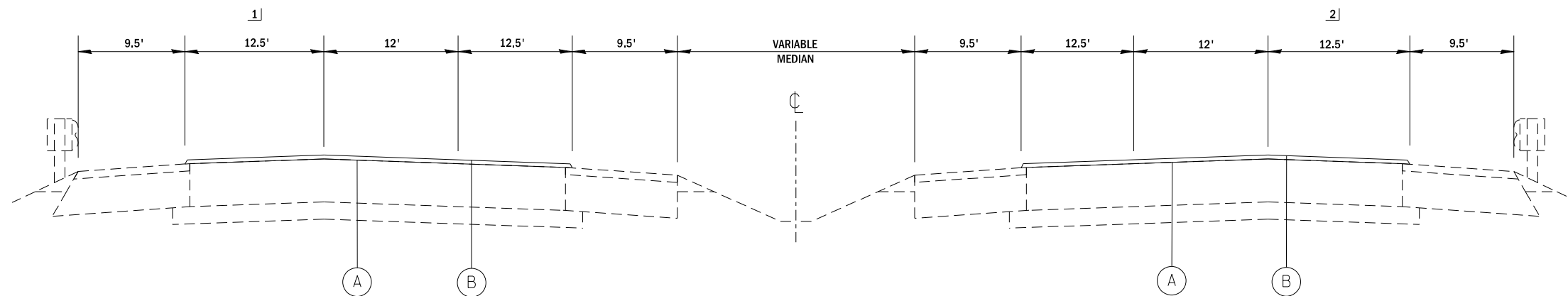
FILE NAME =	USER NAME = sjmm	DESIGNED -	REVISED -	<b>STATE OF ILLINOIS DEPARTMENT OF TRANSPORTATION</b>	<b>SUMMARY OF QUANTITIES</b>	F.A.I. RTE.	SECTION	COUNTY	TOTAL SHEETS	SHEET NO.
pw:\IL\084EBIDINTEG\illinois.gov\PIWIDOT\Documents\IDOT Offices\District 8\Projects\0875\Drawings\AD\Drawings\0875M10-shr-plan.dwg	PROJECT =	CHECKED -	REVISED -			I-255	67-(1,2,3)RS-1	MONROE	8	3
Default	PLOT SCALE = 100.0000' / 1in.	DATE -	REVISED -			CONTRACT NO. 76M10				
	PLOT DATE = 11/30/2018	DATE -	REVISED -			ILLINOIS FED. AID PROJECT				

SCALE: SHEET 1 OF 2 SHEETS STA. TO STA.



**EXISTING TYPICAL SECTION FAI 255 NB/SB**

STA 690+56 TO STA. 596+61 (SB)  
 STA 690+56 TO STA. 590+77 (NB)



**PROPOSED TYPICAL SECTION FAI 255 NB/SB**

STA 690+56 TO STA. 596+61 (SB)  
 STA 690+56 TO STA. 590+77 (NB)

\*EXISTING GUARDRAIL LOCATION VARIES

- 1] NORTHBOUND** NUMBER OF LANES = 3 FROM STA 690+56 TO STA. 628+66  
 TAPER TO 4 LANE FROM STA. 628+66 TO 622+26  
 NUMBER OF LANES = 4 FROM STA 622+26 TO STA. 597+01  
 TAPER TO 5 LANE FROM STA. 597+01 TO 591+81  
 5 LANES PLUS MEDIAN (VARIES 0' TO 13') FROM STA 591+81 TO STA. 587+60
- 2] SOUTHBOUND** NUMBER OF LANES = 3 FORM STA 690+56 TO STA. 622+16  
 TAPER TO 4 LANE FROM STA. 622+16 TO 616+56  
 NUMBER OF LANES = 4 FROM STA 616+56 TO STA. 600+46  
 TAPER TO 5 LANE FROM STA. 600+46 TO 594+96  
 5 LANES PLUS MEDIAN (VARIES 0' TO 9') FROM STA 594+96 TO STA. 590+24

**LEGEND**

- ① EXISTING C.R.P.C.C. PAVEMENT 9"
- ② EXISTING BITUMINOUS SHOULDERS 9"
- ③ EXISTING STABILIZED SUB-BASE, 4"
- ④ EXISTING GUARDRAIL
- ⑤ EXISTING HMA SHOULDERS, 1.5"
- ⑥ EXISTING RUMBLE STRIPS, 16"
- ⑦ EXISTING AGGREGATE WEDGE SHOULDER, TYPE B
- Ⓐ PROPOSED RAPID SETTING POLYMER MODIFIED EMULSION
- Ⓑ PROPOSED ULTRA-THIN HMA SURFACE COURSE

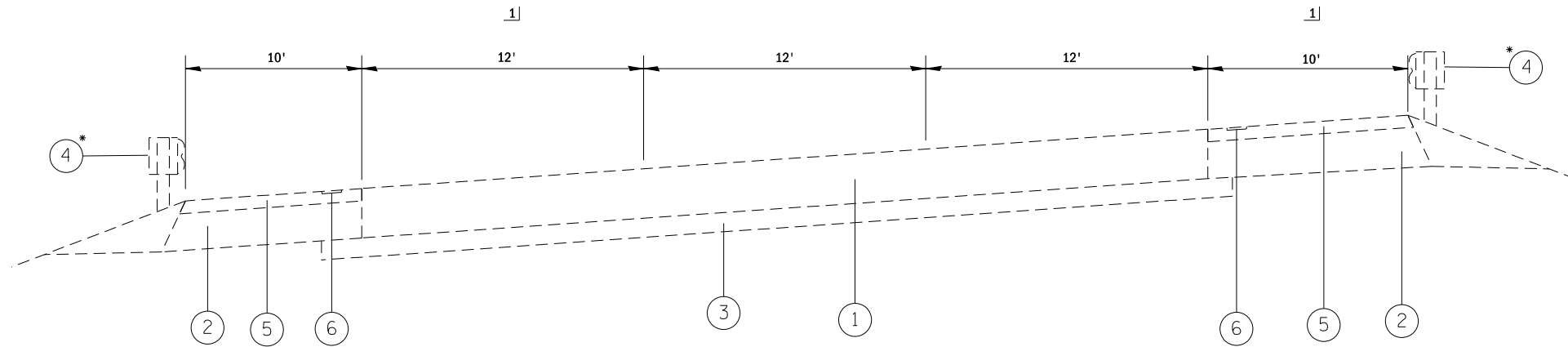
FILE NAME =	USER NAME = sjmm	DESIGNED -	REVISED -
pw:\IL\084EBIDINTEG.illinois.gov\PIWIDOT\Documents\DOT Offices\District 8\Projects\0876\Drawings\AD\Drawings\0876M10-shr-plan.dwg		CHECKED -	REVISED -
Default	PLOT DATE = 11/30/2018	DATE -	REVISED -

**STATE OF ILLINOIS  
 DEPARTMENT OF TRANSPORTATION**

**TYPICAL SECTIONS**

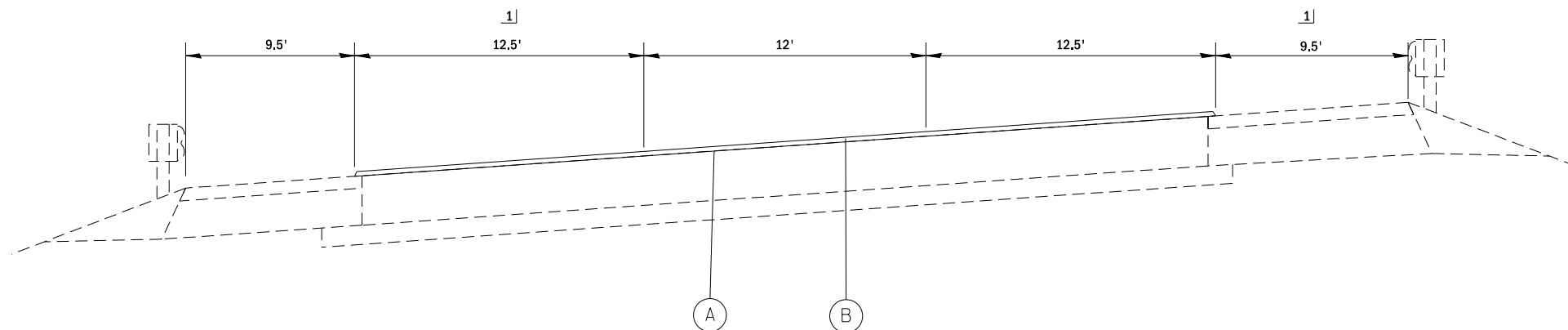
SCALE: SHEET 1 OF 3 SHEETS STA. TO STA.

F.A.I. RTE.	SECTION	COUNTY	TOTAL SHEETS	SHEET NO.
255	67-(1,2,3)RS-1	MONROE	8	4
			CONTRACT NO. 76M10	
ILLINOIS FED. AID PROJECT				



**EXISTING TYPICAL SECTION FAI 255-NB**

STA. 590+77 TO STA. 587+60



**PROPOSED TYPICAL SECTION FAI 255-NB**

STA. 590+77 TO STA. 587+60

\*EXISTING GUARDRAIL LOCATION VARIES

- 1] NORTHBOUND NUMBER OF LANES = 3 FROM STA 690+56 TO STA. 628+66  
 TAPER TO 4 LANE FROM STA. 628+66 TO 622+26  
 NUMBER OF LANES = 4 FROM STA 622+26 TO STA. 597+01  
 TAPER TO 5 LANE FROM STA. 597+01 TO 591+81  
 5 LANES PLUS MEDIAN (VARIES 0' TO 13') FROM STA 591+81 TO STA. 587+60
  
- 2] SOUTHBOUND NUMBER OF LANES = 3 FORM STA 690+56 TO STA. 622+16  
 TAPER TO 4 LANE FROM STA. 622+16 TO 616+56  
 NUMBER OF LANES = 4 FROM STA 616+56 TO STA. 600+46  
 TAPER TO 5 LANE FROM STA. 600+46 TO 594+96  
 5 LANES PLUS MEDIAN (VARIES 0' TO 9') FROM STA 594+96 TO STA. 590+24

**LEGEND**

- ① EXISTING C.R.P.C.C. PAVEMENT 9"
- ② EXISTING BITUMINOUS SHOULDERS 9"
- ③ EXISTING STABILIZED SUB-BASE, 4"
- ④ EXISTING GUARDRAIL
- ⑤ EXISTING HMA SHOULDERS, 1.5"
- ⑥ EXISTING RUMBLE STRIPS, 16"
- ⑦ EXISTING AGGREGATE WEDGE SHOULDER, TYPE B
- (A) PROPOSED RAPID SETTING POLYMER MODIFIED EMULSION
- (B) PROPOSED ULTRA-THIN HMA SURFACE COURSE

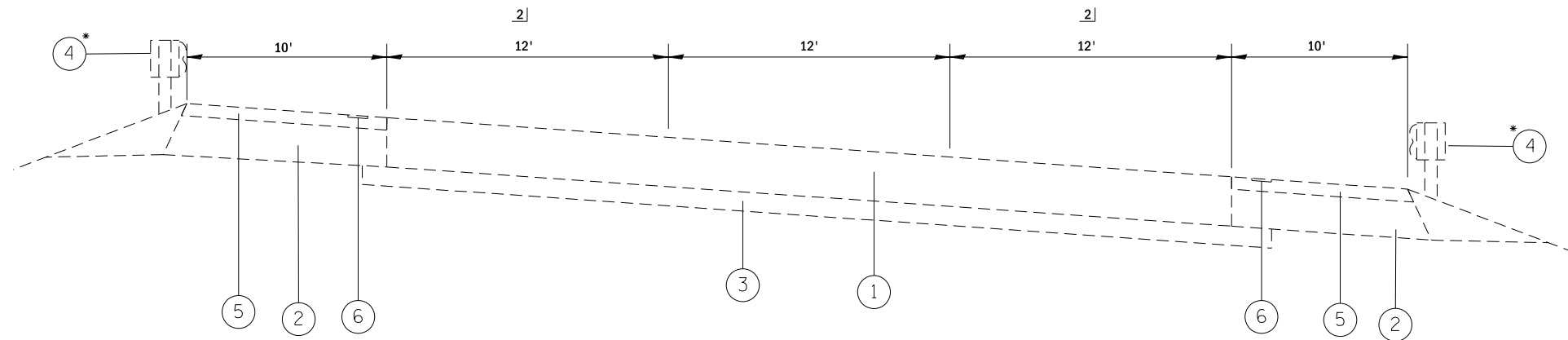
FILE NAME =	USER NAME = sjmem	DESIGNED -	REVISED -
pw:\IL\084EBIDINTEG.illinois.gov\PIWIDOT\Documents\IDOT Offices\District 8\Projects\0876\Drawings\AD\Drawings\0876M10-shr-plan.dwg		CHECKED -	REVISED -
Default	PLOT DATE = 11/30/2018	DATE -	REVISED -

**STATE OF ILLINOIS  
DEPARTMENT OF TRANSPORTATION**

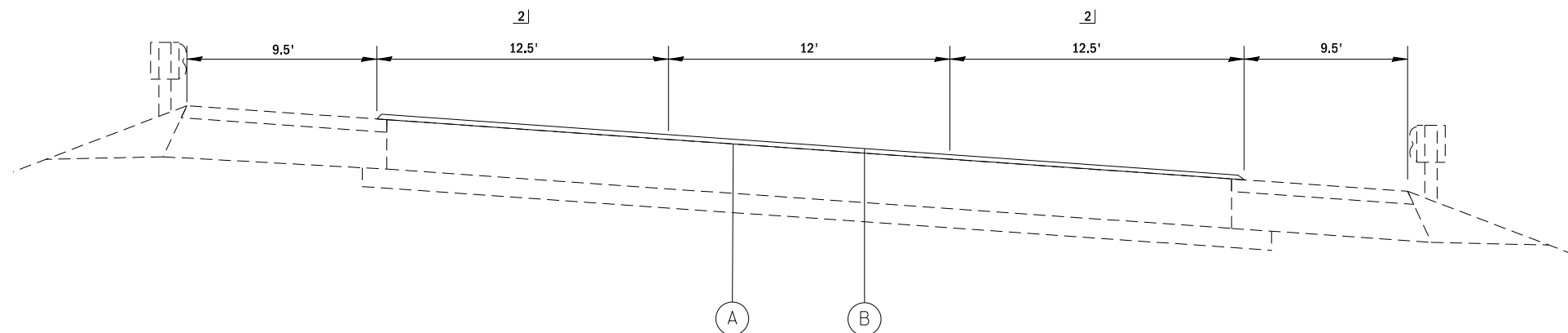
**TYPICAL SECTIONS**

SCALE: SHEET 2 OF 3 SHEETS STA. TO STA.

F.A.I. RTE.	SECTION	COUNTY	TOTAL SHEETS	SHEET NO.
255	67-(1,2,3)RS-1	MONROE	8	5
			CONTRACT NO. 76M10	
ILLINOIS FED. AID PROJECT				



**EXISTING TYPICAL SECTION FAI 255-SB**  
STA 596+61 TO STA. 590+24



**PROPOSED TYPICAL SECTION FAI 255-SB**  
STA 596+61 TO STA. 590+24

\*EXISTING GUARDRAIL LOCATION VARIES

- 1] NORTHBOUND** NUMBER OF LANES = 3 FROM STA 690+56 TO STA. 628+66  
 TAPER TO 4 LANE FROM STA. 628+66 TO 622+26  
 NUMBER OF LANES = 4 FROM STA 622+26 TO STA. 597+01  
 TAPER TO 5 LANE FROM STA. 597+01 TO 591+81  
 5 LANES PLUS MEDIAN (VARIES 0' TO 13') FROM STA 591+81 TO STA. 587+60
- 2] SOUTHBOUND** NUMBER OF LANES = 3 FORM STA 690+56 TO STA. 622+16  
 TAPER TO 4 LANE FROM STA. 622+16 TO 616+56  
 NUMBER OF LANES = 4 FROM STA 616+56 TO STA. 600+46  
 TAPER TO 5 LANE FROM STA. 600+46 TO 594+96  
 5 LANES PLUS MEDIAN (VARIES 0' TO 9') FROM STA 594+96 TO STA. 590+24

**LEGEND**

- ① EXISTING C.R.P.C.C. PAVEMENT 9"
- ② EXISTING BITUMINOUS SHOULDERS 9"
- ③ EXISTING STABILIZED SUB-BASE, 4"
- ④ EXISTING GUARDRAIL
- ⑤ EXISTING HMA SHOULDERS, 1.5"
- ⑥ EXISTING RUMBLE STRIPS, 16"
- ⑦ EXISTING AGGREGATE WEDGE SHOULDER, TYPE B
- Ⓐ PROPOSED RAPID SETTING POLYMER MODIFIED EMULSION
- Ⓑ PROPOSED ULTRA-THIN HMA SURFACE COURSE

FILE NAME =	USER NAME = sjmam	DESIGNED -	REVISED -	<b>STATE OF ILLINOIS DEPARTMENT OF TRANSPORTATION</b>	<b>TYPICAL SECTIONS</b>			F.A.I. RTE.	SECTION	COUNTY	TOTAL SHEETS	SHEET NO.
pw:\IL\084EBIDINTEG.illinois.gov\PIWIDOT\Documents\DOT Offices\District 8\Projects\0876\Drawings\AD\0876M10-shr-plan.dwg		CHECKED -	REVISED -		255	67-(1,2,3)RS-1	MONROE	8	6			
Default	PLOT SCALE = 100.0000' / 1"	DATE -	REVISED -		SCALE: SHEET 3 OF 3 SHEETS STA. TO STA.			CONTRACT NO. 76M10				
	PLOT DATE = 11/30/2018							ILLINOIS FED. AID PROJECT				

BUTT JOINT SCHEDULE					
STATION	LOCATION	LENGTH	WIDTH	PORTLAND CEMENT CONCRETE SURFACE REMOVAL - BUTT JOINT	TEMPORARY RAMP
I-255 NORTHBOUND		FOOT	FOOT	SQ YD	SQ YD
690+56	NB	10	37	41	7
587+60	NB	10	77	86	14
I-255 SOUTHBOUND					
690+56	SB	10	37	41	7
590+24	SB	10	70	78	13
TOTAL:				246	41

RAPID SETTING POLYMER MODIFIED EMULSION			
STA	TO	STA	(GALLON)
I-255 NORTHBOUND			
690+56	TO	628+66	4581
628+66	TO	622+26	550
622+26	TO	597+01	2475
597+01	TO	591+81	572
591+81	TO	587+60	573
I-255 SOUTHBOUND			
690+56	TO	622+16	5062
622+16	TO	616+56	482
616+56	TO	600+46	1578
600+46	TO	594+96	605
594+96	TO	590+24	624
TOTAL:			17100

RAISED PAVEMENT MARKERS				
LOCATION			RAISED REFLECTOR PAVEMENT MARKER REMOVAL	RAISED REFLECTIVE PAVEMENT MARKER
STA	TO	STA	(EACH)	(EACH)
I-255 NORTHBOUND				
690+56	TO	628+66	310	310
628+66	TO	622+26	32	32
622+26	TO	597+01	189	189
597+01	TO	591+81	39	39
591+81	TO	587+60	53	53
I-255 SOUTHBOUND				
690+56	TO	622+16	342	342
622+16	TO	616+56	28	28
616+56	TO	600+46	121	121
600+46	TO	594+96	41	41
594+96	TO	590+24	59	59
TOTAL:			1214	1214

ULTRA-THIN HMA SURFACE COURSE			
STA	TO	STA	(SQ YD)
I-255 NORTHBOUND			
690+56	TO	628+66	25448
628+66	TO	622+26	3058
622+26	TO	597+01	13747
597+01	TO	591+81	3178
591+81	TO	587+60	3184
I-255 SOUTHBOUND			
690+56	TO	622+16	28120
622+16	TO	616+56	2676
616+56	TO	600+46	8766
600+46	TO	594+96	3361
594+96	TO	590+24	3465
TOTAL:			95002

PAVEMENT MARKING SCHEDULE												
STATION TO STATION			TEMPORARY PAVEMENT MARKING			PAVEMENT MARKER REMOVAL-GRINDING	THERMOPLASTIC PAVEMENT MARKING LINE - 6"			SHORT TERM PAVEMENT MARKING	SHORT TERM PAVEMENT MARKING REMOVAL	TEMPORARY PAVEMENT MARKING REMOVAL
			6" SKIP-DASH WHITE	6" SOLID WHITE	6" SOLID YELLOW		6" SKIP-DASH WHITE	6" SOLID WHITE	6" SOLID YELLOW			
STA	TO	STA	FOOT	FOOT	FOOT	SQ FT	FOOT	FOOT	FOOT	FOOT	SQ FT	SQ FT
I-255 NORTHBOUND												
690+56	TO	628+66	3095	6190	6190	7738	3095	6190	6190	1621	540	5158
628+66	TO	622+26	320	640	640	800	320	640	640	168	56	533
622+26	TO	597+01	1894	2525	2525	3472	1894	2525	2525	891	297	2315
597+01	TO	591+81	390	520	520	715	390	520	520	183	61	477
591+81	TO	587+60	421	1264	421	1054	421	1264	421	187	62	702
I-255 SOUTHBOUND												
690+56	TO	622+16	3420	6840	6840	8550	3420	6840	6840	1791	597	5700
622+16	TO	616+56	280	560	560	700	280	560	560	147	49	467
616+56	TO	600+46	1208	1610	1610	2214	1208	1610	1610	568	189	1476
600+46	TO	594+96	413	550	550	756	413	550	550	194	65	504
594+96	TO	590+24	472	1417	472	1181	472	1417	472	210	70	787
SUBTOTAL			11913	22117	20329	27179	11913	22117	20329	5958	1986	18119
TOTAL				54358.35		27179		54358		5958	1986	18119

