

074

03-08-2019 LETTING ITEM 074

STATE OF ILLINOIS
DEPARTMENT OF TRANSPORTATION

F A P RTE	SECTION	COUNTY	TOTAL SHEETS	SHEET NO.
325	-	**	5	1
ILLINOIS			CONTRACT NO. 74865	
(8,9,10,11,12,14) JOINT REPAIR				
** SHELBY & MOULTRIE				
D-97-052-18				

FOR INDEX OF SHEETS, SEE SHEET NO. 2

ADT = 7,150

PROPOSED HIGHWAY PLANS

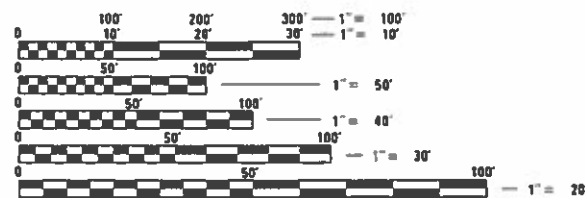
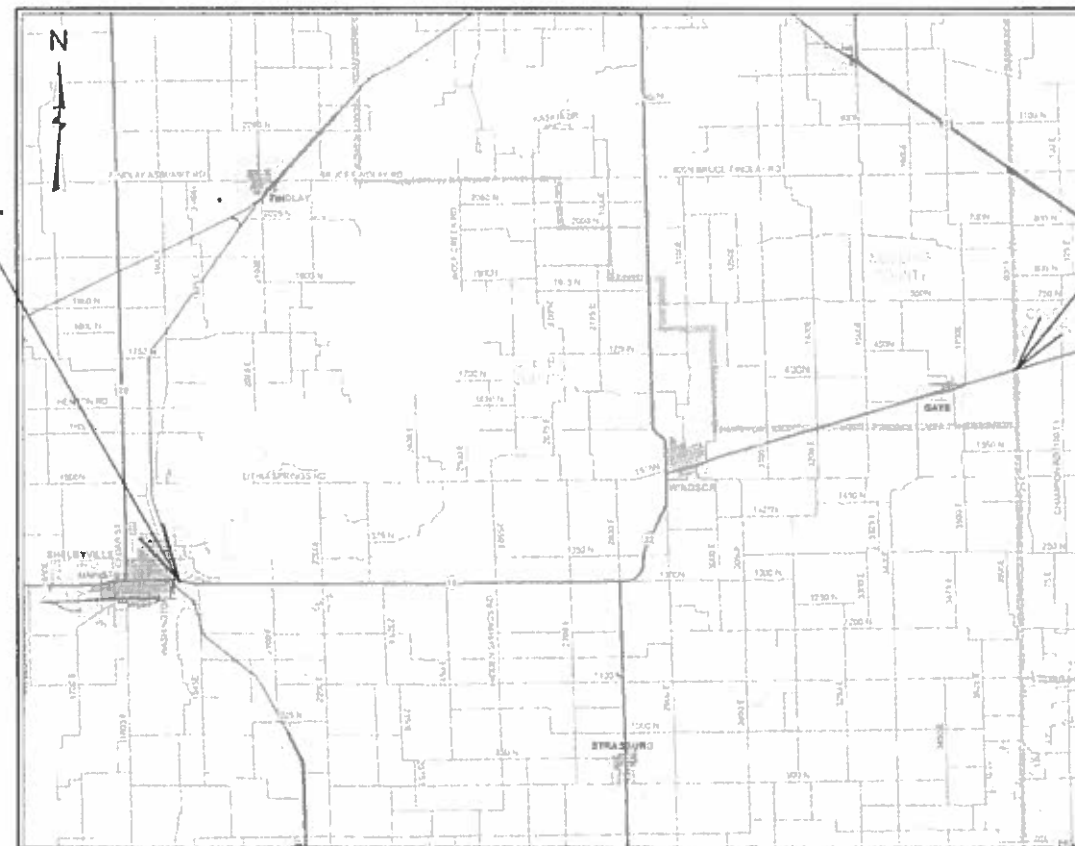
FAP ROUTE 325 (IL 16, IL 32)
SECTION (8,9,10,11,12,14) JOINT REPAIR
PROJECT NHPP-XK94(947)
MICROSURFACING JOINT REPAIR
MOULTRIE & SHELBY COUNTIES

C-97-099-18



PROJECT BEGINS:
0.1 MI E. OF WASHINGTON ST.
STATION 93 + 44

PROJECT ENDS:
MOULTRIE CO. LINE
STATION 205 + 45



FULL SIZE PLANS HAVE BEEN PREPARED USING STANDARD ENGINEERING SCALES. REDUCED SIZED PLANS WILL NOT CONFORM TO STANDARD SCALES. IN MAKING MEASUREMENTS ON REDUCED PLANS, THE ABOVE SCALES MAY BE USED.

J.U.L.I.E.
JOINT UTILITY LOCATION INFORMATION FOR EXCAVATION
1-800-892-0123
OR 811

PROJECT ENGINEER: BRIAN LEWIS
PROJECT MANAGER: TRAVIS WALK

CONTRACT NO. 74865

GROSS LENGTH = 99,793 FT. = 18.90 MILE
NET LENGTH = 89,904 FT. = 17.03 MILE

STATE OF ILLINOIS
DEPARTMENT OF TRANSPORTATION

SUBMITTED DECEMBER 12 20 18
Jeffrey M South
REGIONAL ENGINEER

Feb 1 20 19
Co. E.A. Etk
ENGINEER OF DESIGN AND ENVIRONMENT

Feb 1 20 19
Paul J. [Signature]
DIRECTOR OF HIGHWAYS PROJECT IMPLEMENTATION

PRINTED BY THE AUTHORITY
OF THE STATE OF ILLINOIS

INDEX OF SHEETS

SHEET NO.	ITEM
1	COVER SHEET
2	INDEX OF SHEETS, GENERAL NOTES,
3	SUMMARY OF QUANTITIES
4	SCHEDULE OF QUANTITIES
5	SCHEDULE OF PERMANENT SURVEY MARKERS

THE FOLLOWING STANDARDS ARE A PART OF THESE PLANS AND ARE INCLUDED AFTER SHEET NO. 5 :

STD. NO.	DESCRIPTION
000001-07	STANDARD SYMBOLS, ABBREVIATIONS, AND PATTERNS
001006	DECIMAL OF AN INCH AND OF A FOOT
667101-02	PERMANENT SURVEY MARKERS
701306-04	LANE CLOSURE, 2L, 2W, SLOW MOVING OPERATIONS DAY ONLY, FOR SPEEDS >= 45 MPH
701301-04	LANE CLOSURE, 2L, 2W, SHORT TIME OPERATIONS
701311-03	LANE CLOSURE, 2L, 2W, MOVING OPERATIONS - DAY ONLY
701426-09	LANE CLOSURE, MULTILANE, INTERMITTENT OR MOVING OPERATION, FOR SPEEDS >= 45 MPH
701427-05	LANE CLOSURE, MULTILANE, INTERMITTENT OR MOVING OPERATION, FOR SPEEDS <= 40 MPH
701901-08	TRAFFIC CONTROL DEVICES
780001-05	TYPICAL PAVEMENT MARKINGS
781001-04	TYPICAL APPLICATIONS RAISED REFLECTIVE PAVEMENT MARKERS

STATION EQUATIONS

STA. 206+22.30 BK	=	STA. 206+22.71 AH
STA. 258+74.86 BK	=	STA. 258+74.20 AH
STA. 375+87.42 BK	=	STA. 375+81.05 AH
STA. 605+69.66 BK	=	STA. 611+96.43 AH
STA. 628+35.11 BK	=	STA. 619+69.93 AH
STA. 675+21.99 BK	=	STA. 675+28.49 AH
STA. 684+66.91 BK	=	STA. 684+24.19 AH
STA. 704+16.48 BK	=	STA. 705+32.38 AH
STA. 742+29.25 BK	=	STA. 552+87.07 AH

PROJECT OMISSIONS

EB (IL 16) MULTILANE OMISSIONS

STA. 107+54.00 TO STA. 110+03.02
STA. 156+50.00 TO STA. 170+32.02

WB (IL 16) MULTILANE OMISSIONS

STA. 107+54.00 TO STA. 110+03.02
STA. 159+75.00 TO STA. 170+32.02

(IL 16) SHELBY COUNTY 2W2L OMISSIONS

STA. 238+59.00 TO STA. 260+78.02
STA. 561+50.00 TO STA. 589+15.02
STA. 689+76.00 TO STA. 710+18.02

(IL 16) MOULTRIE COUNTY 2W2L OMISSIONS

STA. 269+18.47 TO STA. 255+71.45

GENERAL NOTES

THE PROPOSED WORK IS LOCATED IN SHELBY COUNTY AND MOULTRIE COUNTY ON IL ROUTE 16 AND IL ROUTE 32 FROM 0.1 MILES FROM E. WASHINGTON ST. IN SHELBYVILLE TO COLES COUNTY LINE.

THE WORK IN THIS SECTION CONSISTS OF PAVEMENT MARKING REMOVAL, RAISED REFLECTIVE PAVEMENT MARKER REMOVAL, MICRO-SURFACING, PAVEMENT MARKING, RAISED REFLECTIVE PAVEMENT MARKERS, TRAFFIC CONTROL, AND ANY OTHER WORK NECESSARY TO COMPLETE THIS SECTION PER THE STANDARD SPECIFICATIONS.

THERE WILL BE NO CRACK/JOINT SEALING, BUMP REMOVAL, PAVEMENT MARKING REMOVAL, OR SCRATCH COAT FILLING ON THIS PROJECT.

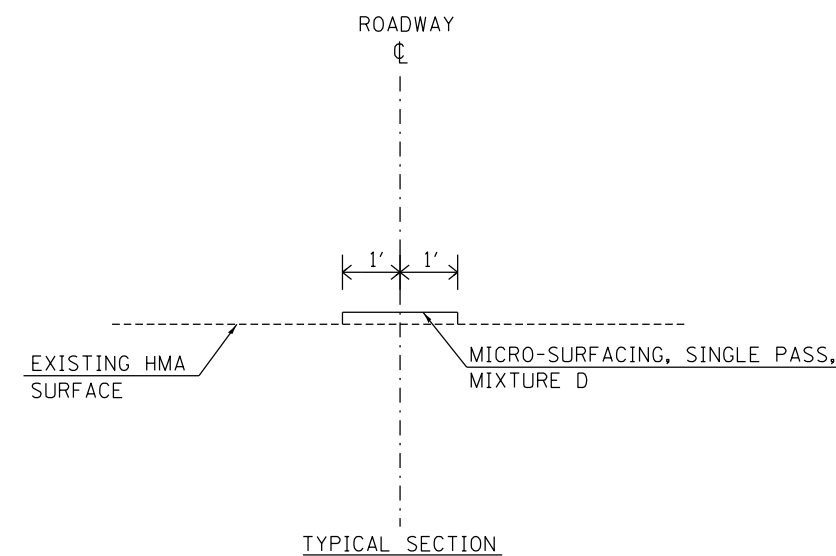
THE TOTAL QUANTITY OF PAINT PAVEMENT MARKING-LINE 4 INCH CONSISTS OF 22,138 FEET OF YELLOW & 3,028 FEET OF WHITE. EDGE LINES WILL NOT BE PAINTED.

THE TOTAL QUANTITY OF RAISED REFLECTIVE PAVEMENT MARKERS CONSISTS OF 305 ONE-WAY CRYSTAL REFLECTORS AND 1,048 TWO-WAY AMBER REFLECTORS.

ALL SHORT-TERM PAVEMENT MARKING SHALL BE TAPE. THE TAPE SHALL BE PLACED BEYOND THE LIMITS OF THE MICRO-SURFACING ALTERNATING ON EITHER SIDE OF THE ROADWAY CENTERLINE.

THE RAISED REFLECTIVE PAVEMENT MARKERS SHALL BE PUT IN AS DOUBLE MARKERS AS SHOWN ON STANDARD 781001-04 FOR THE DIVIDED MULTI-LANES EAST OF THE RAILROAD TRACKS AT SHELBYVILLE.

MICRO-SURFACING WILL BE DONE ONLY ON JOINTS BETWEEN TRAVEL LANES AND NOT ON JOINTS BETWEEN TURN LANES.



*(8,9,10,11,12,14) JOINT REPAIR
** SHELBY & MOULTRIE

**STATE OF ILLINOIS
DEPARTMENT OF TRANSPORTATION**

**INDEX OF SHEETS AND
GENERAL NOTES**

SCALE: N/A SHEET 1 OF 1 SHEETS STA. TO STA.

F.A.P. RTE.	SECTION	COUNTY	TOTAL SHEETS	SHEET NO.
325	*	**	5	2
CONTRACT NO. 74865				
ILLINOIS FED. AID PROJECT				

80% FED
20% STATE

SUMMARY OF QUANTITIES			TOTAL QUANTITIES	CONSTRUCTION TYPE CODE	
CODE NO	ITEM	UNIT		0005 SHELBY CO	0005 MOULTRIE CO
40400121	MICRO-SURFACING, SINGLE PASS, MIXTURE D	SO YD	21330	16737	4593
40600290	BITUMINOUS MATERIALS (TACK COAT)	POUND	4799	3766	1033
67100100	MOBILIZATION	L SUM	1	0.78	0.22
70100460	TRAFFIC CONTROL AND PROTECTION, STANDARD	L SUM	1	0.78	0.22
	701306				
70107025	CHANGEABLE MESSAGE SIGN	CAL DA	56	42	14
70300100	SHORT TERM PAVEMENT MARKING	FOOT	9596	7529	2067
70300150	SHORT TERM PAVEMENT MARKING REMOVAL	SO FT	3199	2510	689
* 78001110	PAINT PAVEMENT MARKING - LINE 4"	FOOT	25166	19999	5167
* 78100100	RAISED REFLECTIVE PAVEMENT MARKER	EACH	1353	1094	259
78300200	RAISED REFLECTIVE PAVEMENT MARKER REMOVAL	EACH	1353	1094	259
Z0049799	PROTECTING OR RESETTING SURVEY MARKERS	EACH	36	36	0

* SPECIALTY ITEM

*(8,9,10,11,12,14) JOINT REPAIR
** SHELBY & MOULTRIE

MODEL: Default
FILE: \\mhc-pw\ulb\BEBID\NTEC\Illinois.gov\PW\DOT\Documents\DOT_Offices\Director\7\Projects\74865\CADDData\CAD\Sheet\74865-PL-500.dgn

USER NAME = steffenmk	DESIGNED -	REVISED -	STATE OF ILLINOIS DEPARTMENT OF TRANSPORTATION	SUMMARY OF QUANTITIES			F.A.P. RTE.	SECTION	COUNTY	TOTAL SHEETS	SHEET NO.
PLOT SCALE = 100.0000' / in.	DRAWN -	REVISED -					325	*	**	5	3
PLOT DATE = 12/12/2018	CHECKED -	REVISED -		SCALE: N/A	SHEET 1	OF 1	SHEETS	STA.	TO STA.	CONTRACT NO. 74865	
	DATE -	REVISED -		ILLINOIS FED. AID PROJECT							

MODEL: Default
 FILE: \\mllc01\B&E\BID\NTEC\Illinois\pov\RW\DOT\Documents\1\DOT_Offices\DI\erfct_7\Project\3174865\CADD\data\CAD\pkcses\074865-plc-schedule.dgn

DESCRIPTION	STATION	TO	STATION	LENGTH	MICRO-SURFACING, SINGLE PASS, MIXTURE D	BITUMINOUS MATERIALS (TACK COAT)	SHORT TERM PAVEMENT MARKING	SHORT TERM PAVEMENT MARKING REMOVAL	PAINT PAVEMENT MARKING LINE 4 INCH	RAISED REFLECTIVE PAVEMENT MARKER	RAISED REFLECTIVE PAVEMENT MARKER REMOVAL
				FEET	SQ. YD.	POUND	FOOT	SO. FT.	FOOT	EACH	EACH
EB MULTILANE											
	93+44	TO	107+54	1410	314	71	141	47	353	36	36
BRIDGE OMISSION	107+54	TO	110+03								
	110+03	TO	156+50	4647	1033	232	465	155	1162	117	117
OMISSION	156+50	TO	170+32								
EB MULTILANE TOTALS				6057	1347	303	606	202	1515	153	153
WB MULTILANE											
	96+79.72	TO	107+54	1074.28	239	54	107	36	269	27	27
BRIDGE OMISSION	107+54	TO	110+03								
	110+03	TO	159+79	4976	1106	249	498	166	1244	125	125
OMISSION	159+75	TO	162+64								
WB MULTILANE TOTALS				6050.28	1345	303	605	202	1513	152	152
SHELBY CO. 2L2W											
	170+32	TO	206+22.3	3590.3	798	180	359	120	2073	45	45
STATION EQUATION	206+22.3	TO	206+22.71								
	206+22.71	TO	238+59	3236.29	720	162	324	108	809	40	40
OMISSION	238+59	TO	258+74.86								
STATION EQUATION	258+74.86	TO	258+74.2								
OMISSION	258+74.2	TO	260+78								
	260+78	TO	375+87.42	11509.42	2558	575	1151	384	2877	144	144
STATION EQUATION	375+87.42	TO	375+81.05								
	375+81.05	TO	561+50	18568.95	4127	928	1857	619	4642	232	232
OMISSION	561+50	TO	589+15								
	589+15	TO	605+69.66	1654.66	368	83	165	55	414	21	21
STATION EQUATION	605+69.66	TO	611+96.43								
	611+96.43	TO	628+35.11	1638.68	365	82	164	55	410	20	20
STATION EQUATION	628+35.11	TO	619+69.93								
	619+69.93	TO	675+21.99	5552.06	1234	278	555	185	1388	69	69
STATION EQUATION	675+21.99	TO	675+28.49								
	675+28.49	TO	684+66.91	938.42	209	47	94	31	235	12	12
STATION EQUATION	684+66.91	TO	684+24.19								
	684+24.19	TO	689+76	551.81	123	28	55	18	138	7	7
OMISSION	689+76	TO	704+16.48								
STATION EQUATION	704+16.48	TO	705+32.38								
OMISSION	705+32.38	TO	710+18								
	710+18	TO	742+29.25	3211.25	714	161	321	107	803	40	40
STATION EQUATION	742+29.25	TO	552+87.07								
	552+87.07	TO	425+58.40	12728.67	2829	636	1273	424	3182	159	159
SHELBY CO. 2L2W TOTALS				63180.51	14045	3160	6318	2106	16971	789	789

DESCRIPTION	STATION	TO	STATION	LENGTH	MICRO-SURFACING, SINGLE PASS, MIXTURE D	BITUMINOUS MATERIALS (TACK COAT)	SHORT TERM PAVEMENT MARKING	SHORT TERM PAVEMENT MARKING REMOVAL	PAINT PAVEMENT MARKING LINE 4 INCH	RAISED REFLECTIVE PAVEMENT MARKER	RAISED REFLECTIVE PAVEMENT MARKER REMOVAL
MOULTRIE CO. 2L2W											
	425+58.4	TO	269+18.47	15639.93	3476	782	1564	521	3910	196	196
OMISSION	269+18.47	TO	255+71.47								
	255+71.47	TO	205+45	5026.47	1117	251	503	168	1257	63	63
MOULTRIE CO. 2L2W TOTALS				20666.4	4593	1033	2067	689	5167	259	259
OVERALL TOTALS				89904	21330	4799	9596	3199	25166	1353	1353

**SHELBY CO. & MOULTRIE CO.
 *(8,9,10,11,12,14) JOINT REPAIR

USER NAME = steffenmk	DESIGNED -	REVISED -
	DRAWN -	REVISED -
PLOT SCALE = 100.0000' / in.	CHECKED -	REVISED -
PLOT DATE = 12/12/2018	DATE -	REVISED -

**STATE OF ILLINOIS
 DEPARTMENT OF TRANSPORTATION**

SCHEDULE OF QUANTITIES

SCALE: N/A SHEET 1 OF 1 SHEETS STA. TO STA.

F.A.P. RTE.	SECTION	COUNTY	TOTAL SHEETS	SHEET NO.
325	*	**	5	4
CONTRACT NO. 74865				
ILLINOIS FED. AID PROJECT				

PROTECTING OR RESETTING SURVEY MARKERS

LOCATION	OFFSET	DESCRIPTION	EACH
SHELBY CO.			
P. O. C. 94+00	0	ALUM DISC IN VAULT .4 INCH DEEP (CL EBL)	1
P. O. C. 99+00	0	ALUM DISC IN VAULT .2 INCH DEEP (CL WBL)	1
P. I. 145+00	0	BRASS IDOT DISC IN CONC CURB	1
172+86.68	4.3' RT	CAST IRON VAULT EBL	1
199+25	3.2' RT	CAST IRON VAULT EBL	1
225+61	4.0' RT	CAST IRON VAULT EBL	1
P. C. 299+44.36	0	CAST IRON VAULT EBL	1
P. I. 302+59.21	1.3' LT OF PLAN CL 0.5 RT OF ACTUAL CL	CAST IRON VAULT	1
302+61.00	0 OF PLAN CL 1.5 LT OF ACTUAL CL	ALUM VAULT UNABLE TO DETERMINE IF DISC OR IP	1
P. T. 305+73.65	0	CAST IRON VAULT	1
P. I. 318+89.34	0	ALUM IDOT DISC IN ALUM VAULT	1
P. I. 334+99.4 (ROW PLANS) 335+00.02 (CONST PLANS)	0	ALUM IDOT DISC	1
P. C. 350+20.80	0	ALUM IDOT DISC	1
P. T. 354+72.80	0	ALUM IDOT DISC	1
P. C. 356+92.52	0	ALUM IDOT DISC	1
P. T. 362+57.36	0	ALUM IDOT DISC	1
375+87.42 BK = 375+81.05 AH	1.5' LT	ALUM IDOT DISC	1
P. I. 410+29.98	2' LT	ALUM VAULT UNABLE TO DETERMINE IF DISC OR IP	1
SEC. COR 436+99.73	0	CAST IRON VAULT	1
P. I. 437+02.97	0	ALUM IDOT DISC	1
P. C. 456+20.07	0	IDOT ALUM DISC	1
P. I. 462+65.51	1.9' LT	ALUM IDOT DISC	1
P. T. 469+10.94	0.5' LT	ALUM IDOT DISC	1
SEC. COR 503+11.64	2.5' RT	ALUM VAULT UNABLE TO DETERMINE IF DISC OR IP	1
P. I. 516+40.46	1.6' RT	ALUM IDOT DISC	1
P. I. 569+21.53	0	ALUM VAULT UNABLE TO OPEN	1
569+16.00	0	ALUM VAULT UNABLE TO DETERMINE IF DISC OR IP	1
P. C. 575+36.19	0	BRASS DISC IN VAULT	1
605+69.66 BK = 611+96.43 AH	0	ALUM DISC P. T.	1
P. C. 614+58.78	0	ALUM DISC	1
628+35.11 BK = 619+69.93 AH	0	ALUM DISC P. T.	1
P. C. 666+01.56	0	ALUM IDOT DISC	1
675+21.99 BK = 675+28.49 AH	0	P. T.	1
704+16.48 BK = 705+32.38 AH	0	ALUM DISC	1
P. T. 552+61.98	0	ALUM DISC	1
P. C. 544+90.94	0	ALUM DISC	1
THERE WERE NO MOULTRIE COUNTY MARKERS			
OVERALL TOTAL			36

**SHELBY CO. & MOULTRIE CO.
*(8,9,10,11,12,14) JOINT REPAIR

MODEL: Default
FILE: \\mllc-pw\ulb\B&E\BID\NTEC\Illinois\gov\PIW\DOT\Documents\DOT_Offices\DI\refct 7\Projects\74865\CADD\data\CAD\pkcs\ID74865-plc-ABT.dgn

USER NAME = steffenmk	DESIGNED -	REVISED -
	DRAWN -	REVISED -
PLOT SCALE = 100.0000' / in.	CHECKED -	REVISED -
PLOT DATE = 12/12/2018	DATE -	REVISED -

STATE OF ILLINOIS
DEPARTMENT OF TRANSPORTATION

SCHEDULE OF
PERMANENT SURVEY MARKERS

SCALE: N/A SHEET 1 OF 1 SHEETS STA. TO STA.

F.A.P. RTE.	SECTION	COUNTY	TOTAL SHEETS	SHEET NO.
325	*	**	5	5
CONTRACT NO. 74865				
ILLINOIS FED. AID PROJECT				