

STATE OF ILLINOIS
DEPARTMENT OF TRANSPORTATION

F.A.U. RTE.	SECTION	COUNTY	TOTAL SHEETS	SHEET NO.
8173	12310	SANGAMON	6	1
ILLINOIS			CONTRACT NO. 72K90	

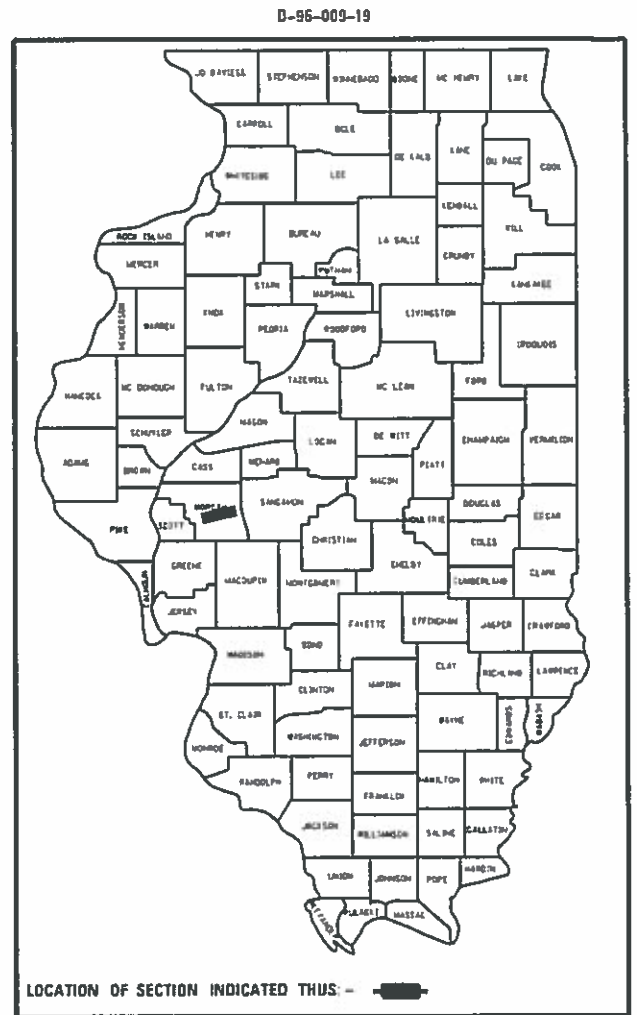
FOR INDEX OF SHEETS, SEE SHEET NO. 2

PROPOSED IMPROVEMENTS

FAU 8173 (MOUND RD)
(23)Q
BITUMINOUS SURFACE TREATMENT, A-2

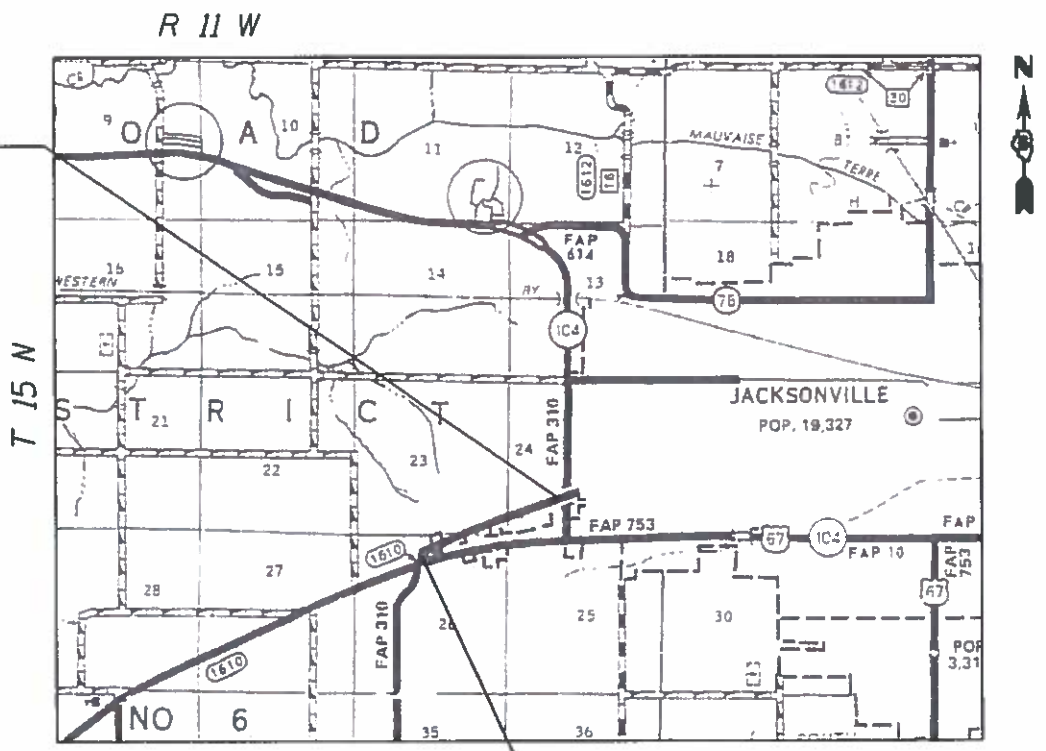
MORGAN CO

C-96-010-19



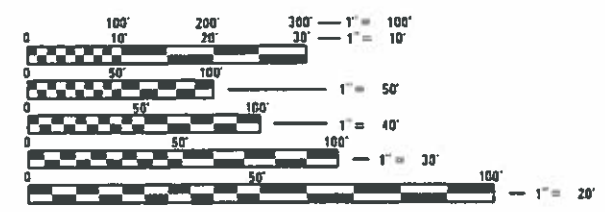
ADT = 750
SU = 40
MU = 10

PROJECT ENDS
STA. 1782+98



PROJECT BEGINS
STA. 1738+35

GROSS LENGTH = 4,463 FT = 0.845 MI
NET LENGTH = 4,463 FT = 0.845 MI



FULL SIZE PLANS HAVE BEEN PREPARED USING STANDARD ENGINEERING SCALES. REDUCED SIZED PLANS WILL NOT CONFORM TO STANDARD SCALES. IN MAKING MEASUREMENTS ON REDUCED PLANS, THE ABOVE SCALES MAY BE USED.

J.U.L.I.E.
JOINT UTILITY LOCATION INFORMATION FOR EXCAVATION
1-800-892-0123
OR 811

PROJECT ENGINEER : MIKE IRWIN - (217)524-7765
PROJECT MANAGER : TIM SHARP - (217)524-9160

CONTRACT NO. 72K90

STATE OF ILLINOIS
DEPARTMENT OF TRANSPORTATION

SUBMITTED *December 21 2018*

Jeffrey M. South
REGIONAL ENGINEER

Paul P. Chaf
ENGINEER OF DESIGN AND ENVIRONMENT

Paul P. Chaf
DIRECTOR OF HIGHWAYS, PROJECT IMPLEMENTATION

PRINTED BY THE AUTHORITY
OF THE STATE OF ILLINOIS

INDEX OF SHEETS

SHEET NO.	DESCRIPTION
1.	COVER SHEET
2.	INDEX OF SHEETS, STANDARDS, GENERAL NOTES & SIGNATURE
3.	SUMMARY OF QUANTITIES
4.	SCHEDULE OF QUANTITIES
5.	PROJECT LOCATION MAP
6.	PROJECT TYPICAL SECTIONS

STANDARDS

STANDARD NO.	DESCRIPTION
701006-05	OFF-ROAD OPERATIONS, 2L, 2W, 15' (4.5m) TO 24" (600mm) FROM EDGE OF PAVMENT
701501-06	URBAN LANE CLOSURE, 2L, 2W - UNDIVIDED
701901-08	TRAFFIC CONTROL DEVICES

NOTES:

MATERIALS TO BE USED SHALL BE

BITUMINOUS:

- HF-P
- 0.4 GAL/SY COVER COAT
- 0.4 GAL/SY SEAL COAT

AGGREGATE:

CM13 AIR COOLED BLAST SLAG OR TRAP ROCK

D-6 OPERATIONS WILL PLACE PERMANENT PAVEMENT MARKINGS.

UP TO 3 SWEEPINGS MAY BE REQUIRED BY A ROTARY TYPE BROOM TO REMOVE EXCESS AGGREGATE.

STATE OF ILLINOIS DEPARTMENT OF TRANSPORTATION DIVISION OF HIGHWAYS DISTRICT 6	
EXAMINED	December 17 20 18
	<i>[Signature]</i> ENGINEER OF OPERATIONS
EXAMINED	Nov 21 20 18
	<i>[Signature]</i> ENGINEER OF PROJECT IMPLEMENTATION
EXAMINED	December 11 20 18
	<i>[Signature]</i> ENGINEER OF PROGRAM DEVELOPMENT

REV. - MS

FILE NAME =	USER NAME = sharptd	DESIGNED -	REVISED -	STATE OF ILLINOIS DEPARTMENT OF TRANSPORTATION	INDEX OF SHEETS, STANDARDS GENERAL NOTES, SIGNATURES	F.A.J. RTE.	SECTION	COUNTY	TOTAL SHEETS	SHEET NO.
S:\CONTRMAINT_CAD\72K90 - FAU 8173 (MORGAN) RD - Morgan Co - A2\PLANS\72K90-shi-2-g		DAMS				8173	(2310)	MORGAN	6	2
PLOT SCALE = 40.0000' / in.	CHECKED -	REVISED -	REVISED -							
PLOT DATE = 12/20/2018	DATE -	REVISED -	REVISED -							
Default					SCALE: _____ SHEET _____ OF _____ SHEETS STA. _____ TO STA. _____					ILLINOIS FED. AID PROJECT

0-01625-6011
 100% STATE
 MORGAN
 ROADWAY
 0005
 URBAN

CODE NO.	ITEM	UNIT	TOTAL QUANTITY	
40300400	BITUMINOUS MATERIALS (COVER AND SEAL COATS)	TON	37	37
40300500	COVER COAT AGGREGATE	TON	125	125
40300600	SEAL COAT AGGREGATE	TON	125	125
40600400	MIXTURE FOR CRACKS, JOINTS, AND FLANGEWAYS	TON	3	3
67100100	MOBILIZATION	L SUM	1	1
70102620	TRAFFIC CONTROL AND PROTECTION, STANDARD 701501	L SUM	1	1
78300200	RAISED REFLECTIVE PAVEMENT MARKER REMOVAL	EACH	57	57

REV. - MS

FILE NAME =	USER NAME = shorptd	DESIGNED -	REVISED -	STATE OF ILLINOIS DEPARTMENT OF TRANSPORTATION	SUMMARY OF QUANTITIES	F.A.J. RTE.	SECTION	COUNTY	TOTAL SHEETS	SHEET NO.
S:\CONTRMINT_CAD\72K90 - FAU 8173 (HOU	RD - Morgan Co. - A2\PLANS\72K90-sh-3-S	DRAWN - OMS	REVISED -			8173	12310	LOGAN	6	3
Default	PLOT SCALE = 40.0000' / in.	CHECKED -	REVISED -			SCALE: SHEET OF SHEETS STA. TO STA.		CONTRACT NO. 72K90 ILLINOIS FED. AID PROJECT		

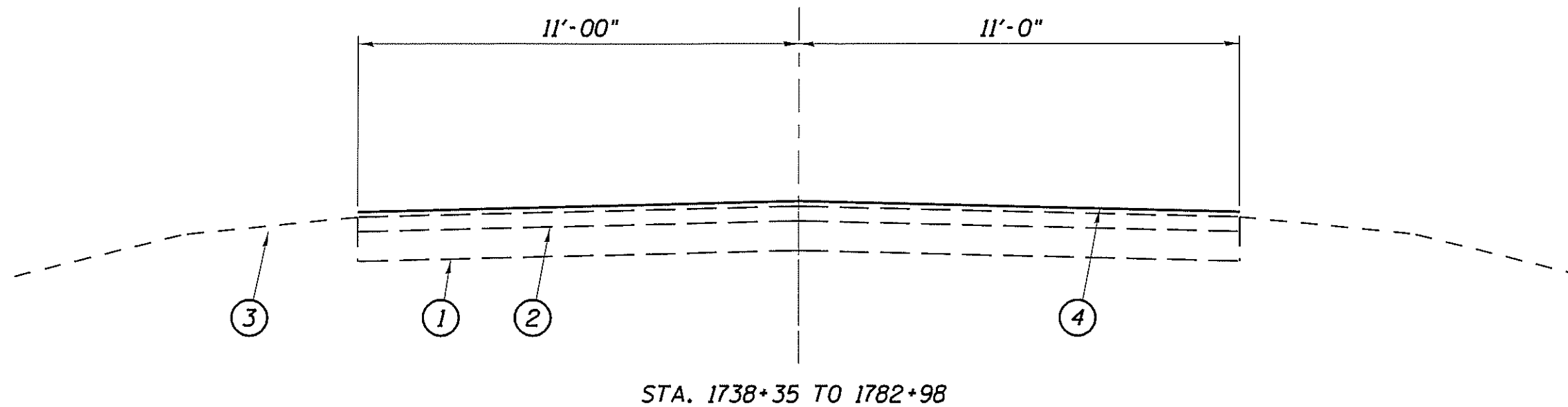


END PROJECT
STA. 1782+98



BEGIN PROJECT
STA. 1738+35

FILE NAME =	USER NAME = sharptd	DESIGNED - _____	REVISED - _____	STATE OF ILLINOIS DEPARTMENT OF TRANSPORTATION	LOCATION MAP			F.A.U. RTE.	SECTION	COUNTY	TOTAL SHEETS	SHEET NO.
S:\CONTRMAINT_CAD\72K90 - FAU 8173 (HOU	ID RD - Morgan Co. - A2\PLANS\72K90-shr-5-p	DRAWN - _____	REVISED - _____		67	12310	MORGAN	6	5			
	PLOT SCALE = 40,0000' / 1" =	CHECKED - _____	REVISED - _____		SCALE: _____ SHEET OF SHEETS STA. _____ TO STA. _____			CONTRACT NO. 72K90				
Default	PLOT DATE = 12/19/2018	DATE - _____	REVISED - _____		ILLINOIS FED. AID PROJECT							



L E G E N D

- 1- EXIST. P.C.C. PAVEMENT
- 2- EXIST. H.M.A SURFACE
- 3- EXIST. AGGREGATE SHOULDERS, TYPE B
- 4- PROP. BITUMINOUS SURFACE TREATMENT, A-2

FILE NAME =	USER NAME = sherpnd	DESIGNED -	REVISED -	STATE OF ILLINOIS DEPARTMENT OF TRANSPORTATION	TYPICALS	F.A.I. RTE. =	SECTION	COUNTY	TOTAL SHEETS	SHEET NO.
S:\CONTRACTS\72K90 - FAU 0173 (MORGAN RD) - Morgan Co. - A2\PLANS\72K90-sht-8-typ		GRANM	REVISED -			0173	(2310)	MORGAN	6	6
Default	PLOT SCALE = 3.0000 / 1 in.	CHECKED -	REVISED -		SCALE:					CONTRACT NO. 72K90
	PLOT DATE = 11/19/2018	DATE -	REVISED -		SHEET	OF	SHEETS	STA.	TO STA.	ILLINOIS FED. AID PROJECT