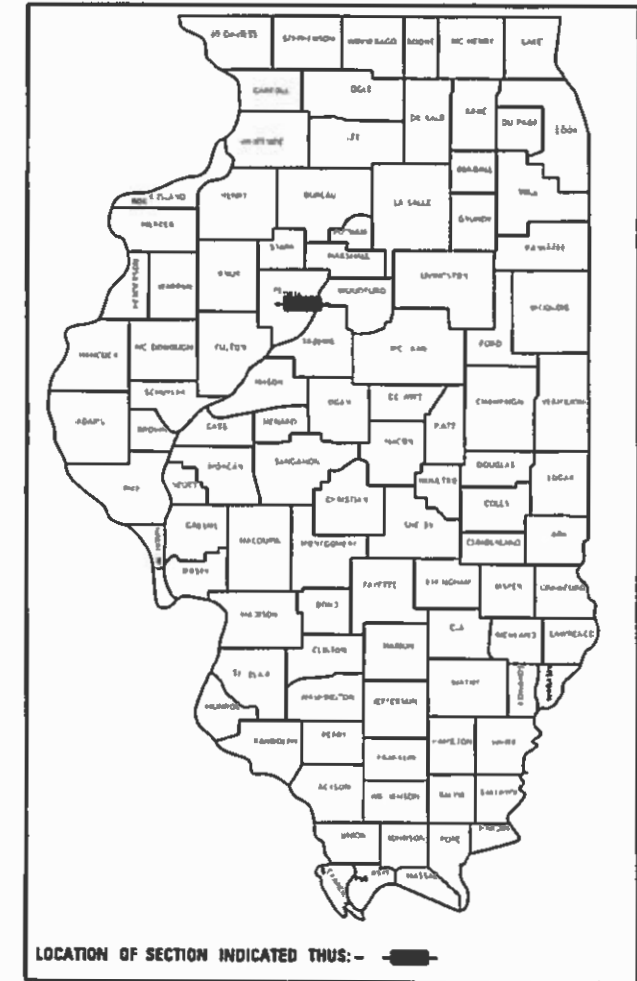


STATE OF ILLINOIS  
DEPARTMENT OF TRANSPORTATION

P.A. RTE	SECTION	COUNTY	TOTAL SHEETS	SHEET NO.
		PEORIA	13	1
		ILLINOIS CONTRACT NO. 68E80		
D4 PARKING IMPROVEMENT 2018				

D-94-009-18



**PROJECT DESCRIPTION**  
THIS PROJECT IMPROVEMENT CONSISTS OF CONSTRUCTION OF AN AGGREGATE PARKING LOT WITH AN ENCLOSED FENCE AND GATE EAST OF DISTRICT 4 MATERIALS LAB

STATE OF ILLINOIS  
DEPARTMENT OF TRANSPORTATION

SUBMITTED December 21, 2018  
[Signature] REGION THREE ENGINEER

Feb 1, 2019  
[Signature] ENGINEER OF DESIGN AND ENVIRONMENT

Feb 1, 2019  
[Signature] DIRECTOR OF HIGHWAYS PROJECT IMPLEMENTATION

PRINTED BY THE AUTHORITY  
OF THE STATE OF ILLINOIS

# PROPOSED PARKING LOT PLANS

SECTION: D4 PARKING IMPROVEMENT 2018  
PEORIA COUNTY

**INDEX OF SHEETS**

- 1 COVER SHEET
- 2 GENERAL NOTES, COMMITMENTS & CONTROL POINTS
- 3-4 SUMMARY OF QUANTITIES
- 5-6 SCHEDULE OF QUANTITIES
- 7-9 TYPICAL SECTIONS
- 10 EXISTING PLAN
- 11 PROPOSED PLAN STAGE I
- 12 PROPOSED PLAN STAGE II
- 13 WEST ENTRANCE PROFILE

**HIGHWAY STANDARDS**

- 280001-07
- 664001-02
- 701901-08

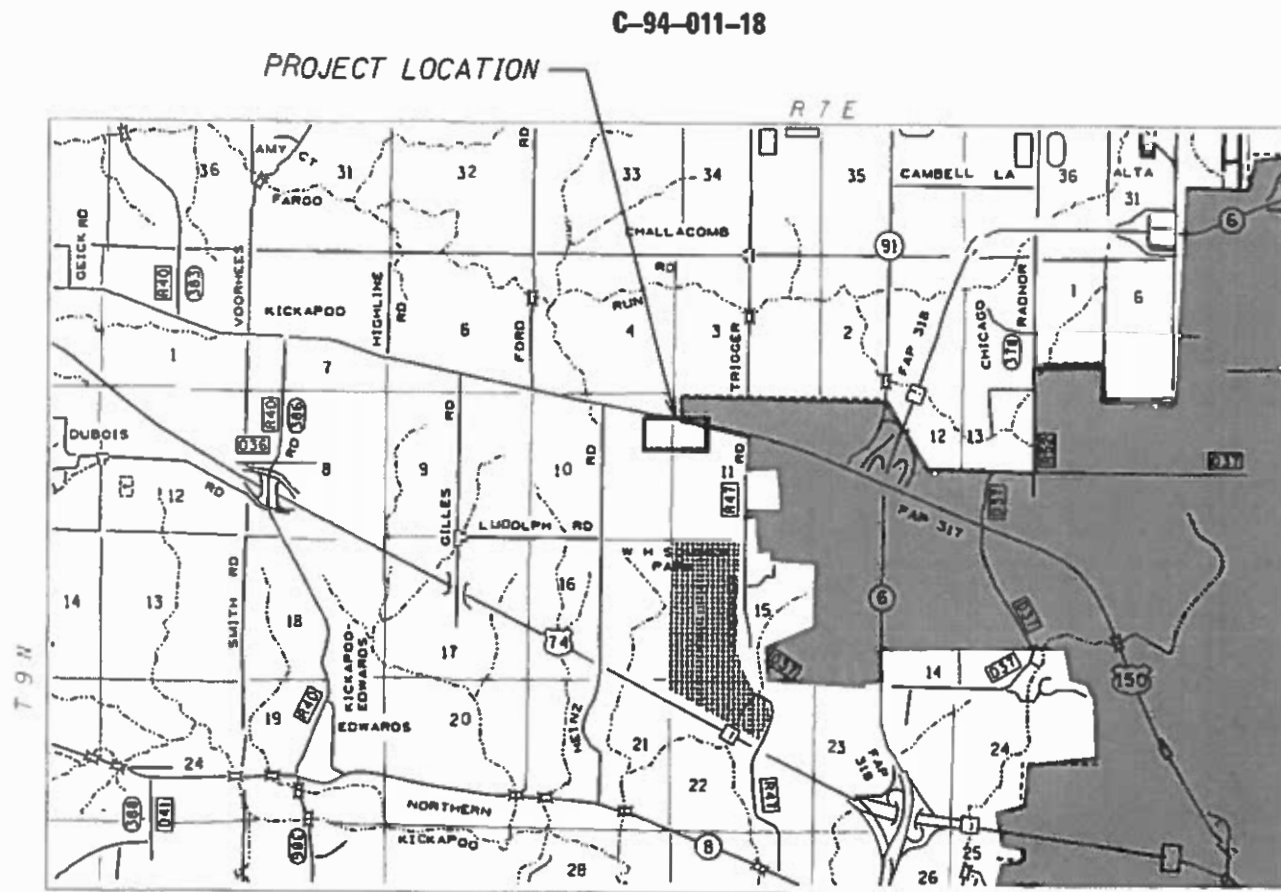


FULL SIZE PLANS HAVE BEEN PREPARED USING STANDARD ENGINEERING SCALES. REDUCED SIZED PLANS WILL NOT CONFORM TO STANDARD SCALES. IN MAKING MEASUREMENTS ON REDUCED PLANS, THE ABOVE SCALES MAY BE USED.

J.U.L.I.E.  
JOINT UTILITY LOCATION INFORMATION FOR EXCAVATION  
1-800-892-0123  
OR 811

PROJECT ENGINEER: ELIAS ELDERZI (309) 671-3459  
PROJECT MANAGER: MIKE LEWIS (309) 671-3454  
CATALOG NO. 035533-00D  
CONTRACT NO. 68E80

GROSS LENGTH = 750 FT. = 0.142 MILE  
NET LENGTH = 750 FT. = 0.142 MILE



**GENERAL NOTES**

**COMMITMENTS**

Commitments are not to be altered without the written approval of all parties to which the commitment was made.  
No commitments have been made on this project.

**ENVIRONMENTAL REVIEWS**

Prior to the use of any proposed borrow areas, use areas (temporary access roads, detours, run-arounds, etc.) and/or waste areas, the Contractor shall file the required environmental resource request surveys according to Section 107.22 of the Standard Specifications. These surveys are required in order for the Department to conduct cultural and biological resource surveys for the proposed site.

The required environmental resource documentation shall include the following:

- \* BDE Form 2289 (Cultural and Natural Resources Review of Borrow Areas)
- \* BDE Form 2290 (Waste/Use Area Review)
- \* A location map showing the size limits and location of the use area
- \* Color photographs depicting the use area
- \* Borrow Area Entry Agreement form \* D4 PI0101

Prior to any waste materials being removed from the construction site the required environmental resource surveys shall be obtained and filed by the Contractor. Excess waste products removed from the construction site shall be disposed of as required in Section 202.03 of the Standard Specifications.

Any protruding metal bars shall be removed prior to the disposal of broken concrete at approved disposal sites.

Please note that a minimum of four weeks shall be allowed for the District to obtain the required waste site environmental clearances and six weeks for the required borrow site environmental clearances.

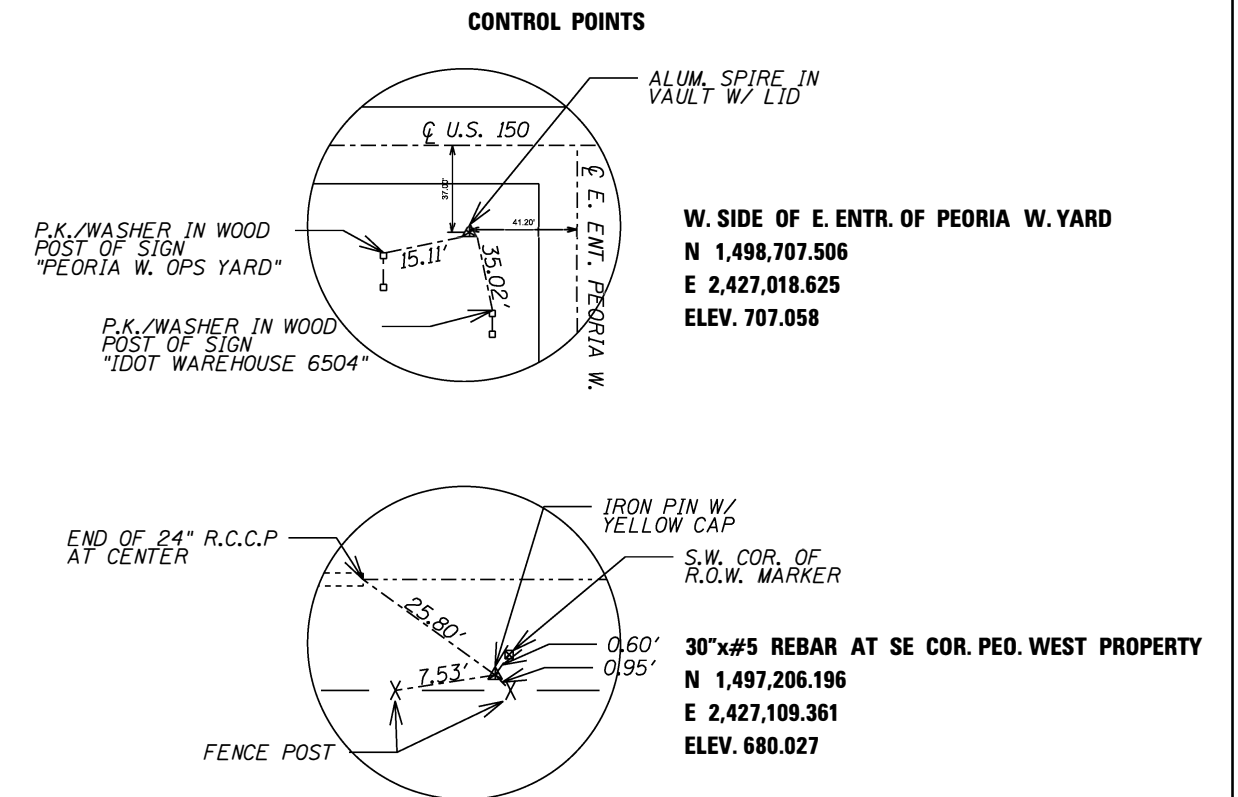
**AVAILABILITY OF ELECTRONIC FILES**

Micro Station and GEOPAK files of this project will be made available to the Contractor after contract award. If there is a conflict between the electronic files and the printed contract plans and documents, the printed contract plans and documents shall take precedence over the electronic files. The Contractor shall accept all risk associated with using the electronic files and shall hold the Department harmless for any errors or omissions in the electronic files and the data contained therein. Errors or delays resulting from the use of the electronic files by the Contractor shall not result in an extension of time for any interim or final completion date or shall not be considered cause for additional compensation. The Contractor shall not use, share, or distribute these electronic files except for the purpose of constructing this contract. Any claims by third parties due to use or errors shall be the responsibility of the Contractor. The Contractor shall include this disclaimer with the transfer of these electronic files to any other parties and shall include appropriate language binding them to similar responsibilities.

**PROJECT SPECIFIC NOTES**

1. Aggregate Surface Course Type B shall be white rock.
2. Existing vegetation within the parking lot limits shall be removed to the satisfaction of the Engineer. This work shall not be paid for separately but shall be included in the cost of PREPARATION OF BASE SPECIAL.
3. The parking lot will be clear of all vehicles and other miscellaneous items prior to the start of the project.
4. FURNISHED EXCAVATION will be used only if existing excavation is found to be unsuitable.

The IEPA generator number for IDOT right-of-way in Peoria County is 1438995017.



MODEL NUMBER: 68E80  
FILE NAME: 68E80

USER NAME = \$USERS	DESIGNED -	REVISED -	<b>STATE OF ILLINOIS DEPARTMENT OF TRANSPORTATION</b>	<b>GENERAL NOTES AND PROJECT SPECIFIC NOTES</b>		F.A. RTE.	SECTION	COUNTY	TOTAL SHEETS	SHEET NO.
DRAWN -	REVISIED -					*	PEORIA	13	2	
PLOT SCALE = \$SCALE\$	CHECKED -	REVISED -		CONTRACT NO. 68E80						
PLOT DATE = \$DATE\$	DATE -	REVISED -		SCALE:	SHEET	OF	SHEETS	STA.	TO	STA.

CODE NO.	ITEM	UNIT	TOTAL QUANTITY	CONST. CODE
				0044
				PEORIA 100% STATE
20200100	EARTH EXCAVATION	CU YD	384	384
20400800	FURNISHED EXCAVATION	CU YD	386	386
25000200	SEEDING, CLASS 2	ACRE	0.5	0.5
25000400	NITROGEN FERTILIZER NUTRIENT	POUND	45	45
25000500	PHOSPHORUS FERTILIZER NUTRIENT	POUND	45	45
25000600	POTASSIUM FERTILIZER NUTRIENT	POUND	45	45
28000500	INLET AND PIPE PROTECTION	EACH	3	3
40200800	AGGREGATE SURFACE COURSE, TYPE B	TON	4127	4127
66400305	CHAIN LINK FENCE, 6'	FOOT	1176	1176
66408200	CHAIN LINK GATES, 6' X 24' DOUBLE	EACH	2	2
* 66900200	NON-SPECIAL WASTE DISPOSAL	CU YD	385	385
* 66900530	SOIL DISPOSAL ANALYSIS	EACH	1	1
* 66901001	REGULATED SUBSTANCE PRE-CONSTRUCTION PLAN	L SUM	1	1
* 66901002	ON-SITE MONITORING OF REGULATED SUBSTANCES	CAL DA	3	3
* 66901003	REGULATED SUBSTANCES FINAL CONSTRUCTION REPORT	L SUM	1	1
67100100	MOBILIZATION	L SUM	1	1

\*= SPECIALTY ITEM

REV. - MS

MODEL: #MODEL NAME  
FILE NAME: #FILE #

USER NAME = #USER*	DESIGNED -	REVISED -
	DRAWN -	REVISED -
PLOT SCALE = #SCALE*	CHECKED -	REVISED -
PLOT DATE = #DATE*	DATE -	REVISED -

STATE OF ILLINOIS  
DEPARTMENT OF TRANSPORTATION

SUMMARY OF QUANTITIES

F.A. RTÉ.	SECTION	COUNTY	TOTAL SHEETS	SHEET NO.
	*	PEORIA	13	3
CONTRACT NO. 68E80				

ILLINOIS FED. AID PROJECT  
D4 PARKING IMPROVEMENT 2018

REV. 1/23/19



LOCATION	AGGREGATE SURFACE COURSE, TYPE B (TON)	PREPARATION OF BASE SPECIAL (SQ YD)
<b>STAGE I</b>		
WEST ENTRANCE		
<i>Sta 0+20 to 1+83</i>	148.69	513.4
SOUTH ENTRANCE		
<i>Sta 32+40</i>		218.2
PARKING LOT		9112.44
<i>NW Widening</i>	143.23	
<i>SW Widening</i>	223.23	
<i>NE Widening</i>	316.3	
<b>STAGE I SUBTOTAL</b>	<b>831.45</b>	<b>9844.04</b>
<b>STAGE II</b>		
WEST ENTRANCE	161.77	
SOUTH ENTRANCE	20.07	
PARKING LOT	3113.42	
<b>STAGE II SUBTOTAL</b>	<b>3295.26</b>	<b>0</b>
<b>TOTAL</b>	<b>4126.71</b>	<b>9844.04</b>

<b>MOBILIZATION</b>	
LOCATION	L SUM
Jobsite	1
<b>TOTAL</b>	<b>1</b>

<b>CONSTRUCTION LAYOUT</b>	
LOCATION	L SUM
Project Limits	1
<b>TOTAL</b>	<b>1</b>

<b>SOIL DISPOSAL ANALYSIS</b>	
LOCATION	EACH
Jobsite	1
<b>TOTAL</b>	<b>1</b>

<b>REGULATED SUBSTANCES FINAL CONSTRUCTION REPORT</b>	
LOCATION	L SUM
Jobsite	1
<b>TOTAL</b>	<b>1</b>

<b>NON-SPECIAL WASTE DISPOSAL</b>	
LOCATION	CU YD
Project Limits	385
<b>TOTAL</b>	<b>385</b>

Station	INLET & PIPE PROTECTION
	EACH
Rt. Sta. 030+38	1
Rt. Sta. 035+68	1
Rt. Sta. 037+29	1
<b>Total</b>	<b>3</b>

<b>FERTILIZER</b>			
LOCATION	Nitrogen 90lb/acre (LB)	Phosphorus 90lb/acre (LB)	Potassium 90lb/acre (LB)
JOBSITE	45	45	45
<b>TOTAL</b>	<b>45</b>	<b>45</b>	<b>45</b>

<b>SEEDING, CLASS 2</b>	
LOCATION	ACRE
JOBSITE	0.5
<b>TOTAL</b>	<b>0.5</b>

MODEL: \$MODELNAME\$  
FILE: NAME: \$FILE\$

USER NAME = \$USERS\$	DESIGNED -	REVISED -
	DRAWN -	REVISED -
PLOT SCALE = \$SCALE\$	CHECKED -	REVISED -
PLOT DATE = \$DATE\$	DATE -	REVISED -

**STATE OF ILLINOIS  
DEPARTMENT OF TRANSPORTATION**

<b>SCHEDULE OF QUANTITIES</b>			
SCALE:	SHEET	OF SHEETS	STA. TO STA.

F.A. RTE.	SECTION	COUNTY	TOTAL SHEETS	SHEET NO.
	*	PEORIA	13	5
			CONTRACT NO. 68E80	

\* D4 PARKING IMPROVEMENT 2018

LOCATION	EARTH EXCAVATION (CU YD)	EARTH EMBANKMENT (CU YD)	ADJUSTED FOR SHRINKAGE	BALANCE (+) Waste / (-) Borrow (CU YD)
<b>STAGE I</b>				
WEST ENTRANCE				
<i>Sta 0+20 to 1+22</i>	47.8			47.8
<i>Sta 1+22 to 1+83 (Berm)</i>	131			131
PARKING LOT				0
<i>NW Widening</i>	2.6	8.9	11.125	-8.525
<i>SW Widening</i>	101.6			101.6
<i>NE Widening</i>	100.7	19.9	24.875	75.825
<b>STAGE I SUBTOTAL</b>	<b>383.7</b>	<b>28.8</b>	<b>36</b>	<b>347.7</b>
<b>STAGE II</b>				0
WEST ENTRANCE				0
<i>N Edge Apron</i>		7	8.75	-8.75
<i>S Edge Apron</i>		6	7.5	-7.5
PARKING LOT				0
<i>Edge Apron</i>	0.5	267	333.75	-333.25
<b>STAGE II SUBTOTAL</b>	<b>0.5</b>	<b>280</b>	<b>350</b>	<b>-349.5</b>
<b>TOTAL</b>	<b>384.2</b>	<b>308.8</b>	<b>386</b>	<b>-1.8</b>

\*Assumed shrinkage factor 25%

Volumes calculated using 3D CADD modeling tools.

CHAIN LINK FENCE, 6'		
Location	Type / Size	FOOT
Noth Side	6' Chain Link	408
East Side	6' Chain Link	204
South Side	6' Chain Link	384
West Side	6' Chain Link	180
<b>TOTAL</b>		1176

CHAIN LINK GATE, 6' X 24' DOUBLE		
Location	Type / Size	EACH
South Side	Double/24'	1
West Side	Double/24'	1
<b>TOTAL</b>		2

MODEL: \\MODEL\NAME\$  
FILE: \\MODEL\\$.STL\$

USER NAME = \$USERS	DESIGNED -	REVISED -
	DRAWN -	REVISED -
PLOT SCALE = \$SCALE\$	CHECKED -	REVISED -
PLOT DATE = \$DATE\$	DATE -	REVISED -

**STATE OF ILLINOIS  
DEPARTMENT OF TRANSPORTATION**

SCHEDULE OF QUANTITIES			
SCALE:	SHEET	OF	SHEETS

F.A. RTE.	SECTION	COUNTY	TOTAL SHEETS	SHEET NO.
	*	PEORIA	13	6
CONTRACT NO. 68E80				

ILLINOIS FED. AID PROJECT  
\* D4 PARKING IMPROVEMENT 2018

NOTE:  
Existing parking lot shall have areas excavated and filled according to the plans. When completed, the entire parking lot shall be shaped and graded in accordance with the Special Provision PREPARATION OF BASE SPECIAL.

- LEGEND
- ① EXISTING PCC PAVEMENT
  - ② EXISTING HMA OVERLAY
  - ③ EXISTING AGGREGATE SHOULDERS
  - ④ EXISTING PAVEMENT MARKING
  - ⑤ EXISTING AGGREGATE BASE
  
  - ⑧ PROPOSED AGGREGATE SURF CSE, TY B
  - ⑨ PROPOSED CHAIN LINK FENCE, 6' FT
  - ⑩ PROPOSED FURNISHED EXCAVATION
  
  - ☒ PROPOSED EARTH EXCAVATION

### STAGE I

VARIABLE WIDTH

EXISTING TYPICAL SECTION

406'-0"

STAGE II FINISHED GRADE

STAGE I FINISHED GRADE

12"

6"

12"

SECTION A-A  
(see sheet 11)

PROPOSED TYPICAL SECTION

MODEL: \$MODELNAME\$  
FILE NAME: \$FILE\$

USER NAME = \$USERS\$	DESIGNED -	REVISED -
	DRAWN -	REVISED -
PLOT SCALE = \$SCALE\$	CHECKED -	REVISED +
PLOT DATE = \$DATE\$	DATE -	REVISED -

**STATE OF ILLINOIS  
DEPARTMENT OF TRANSPORTATION**

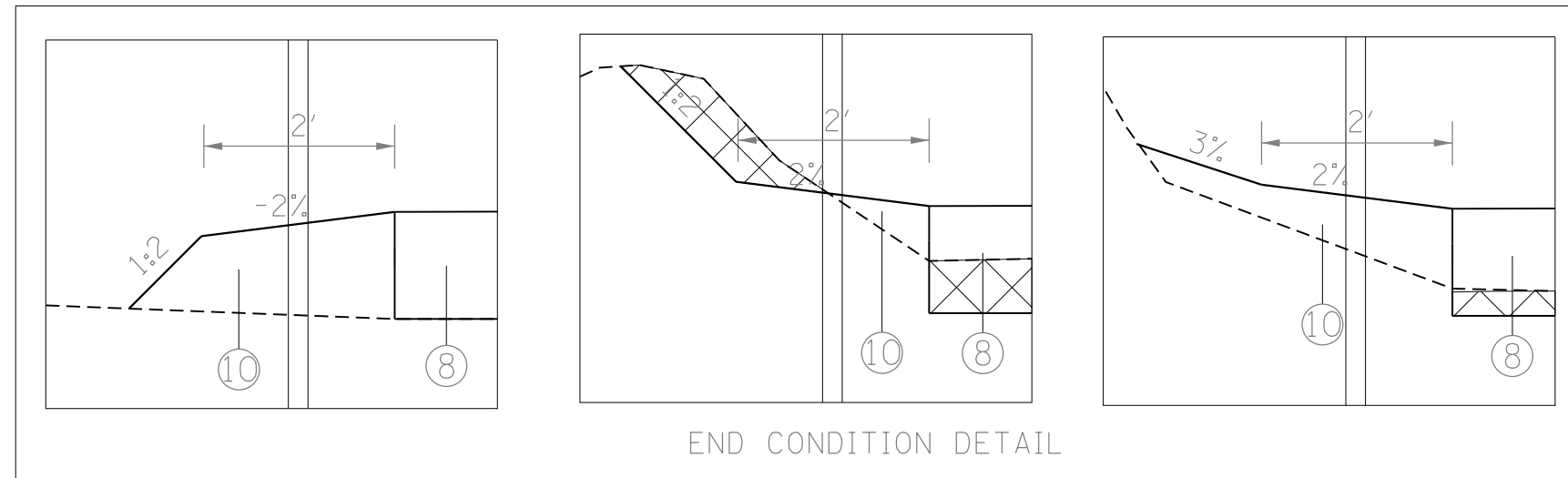
**TYPICAL SECTIONS**

SCALE: SHEET OF SHEETS STA. TO STA.

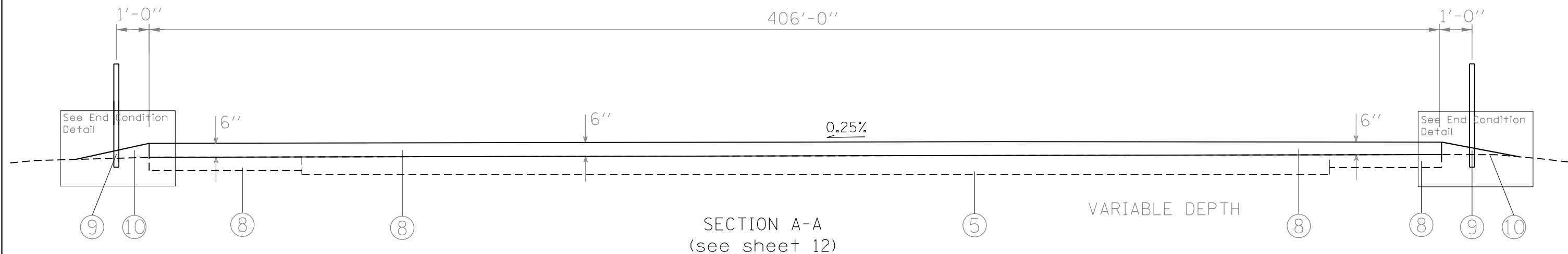
F.A. RTE.	SECTION	COUNTY	TOTAL SHEETS	SHEET NO.
	*	PEORIA	13	7
CONTRACT NO. 68E80				
ILLINOIS FED. AID PROJECT				
* D4 PARKING IMPROVEMENT 2018				

LEGEND

- ① EXISTING PCC PAVEMENT
- ② EXISTING HMA OVERLAY
- ③ EXISTING AGGREGATE SHOULDERS
- ④ EXISTING PAVEMENT MARKING
- ⑤ EXISTING AGGREGATE BASE
  
- ⑧ PROPOSED AGGREGATE SURF CSE, TY B
- ⑨ PROPOSED CHAIN LINK FENCE, 6' FT
- ⑩ PROPOSED FURNISHED EXCAVATION
  
- ▨ PROPOSED EARTH EXCAVATION



STAGE II



MODEL: \$MODELNAME\$  
FILE: \$NAME\$. \$FILE\$

USER NAME = \$USERS	DESIGNED -	REVISED -
PLOT SCALE = \$SCALE\$	DRAWN -	REVISED -
PLOT DATE = \$DATE\$	CHECKED -	REVISED -
	DATE -	REVISED -

**STATE OF ILLINOIS  
DEPARTMENT OF TRANSPORTATION**

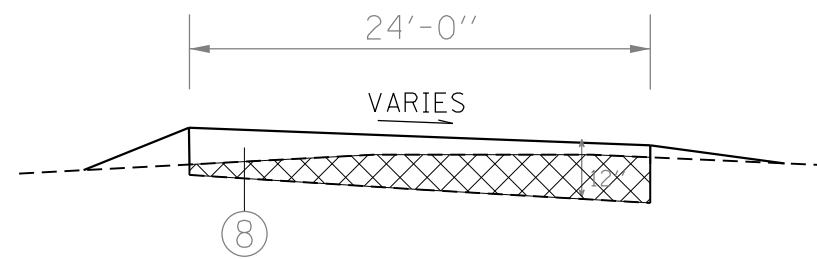
<b>TYPICAL SECTIONS</b>	
SCALE:	SHEET OF SHEETS STA. TO STA.

F.A. RTE.	SECTION	COUNTY	TOTAL SHEETS	SHEET NO.
	*	PEORIA	13	8
CONTRACT NO. 68E80				
ILLINOIS FED. AID PROJECT				
* D4 PARKING IMPROVEMENT 2018				

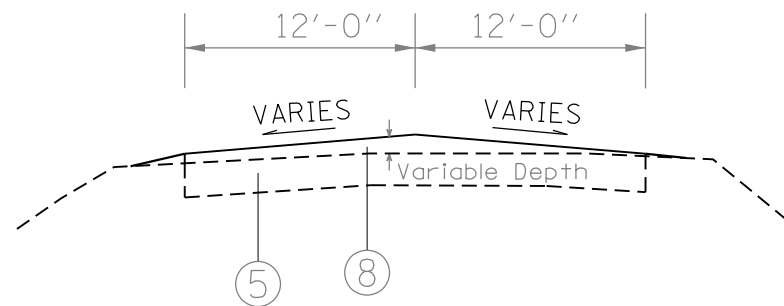


LEGEND

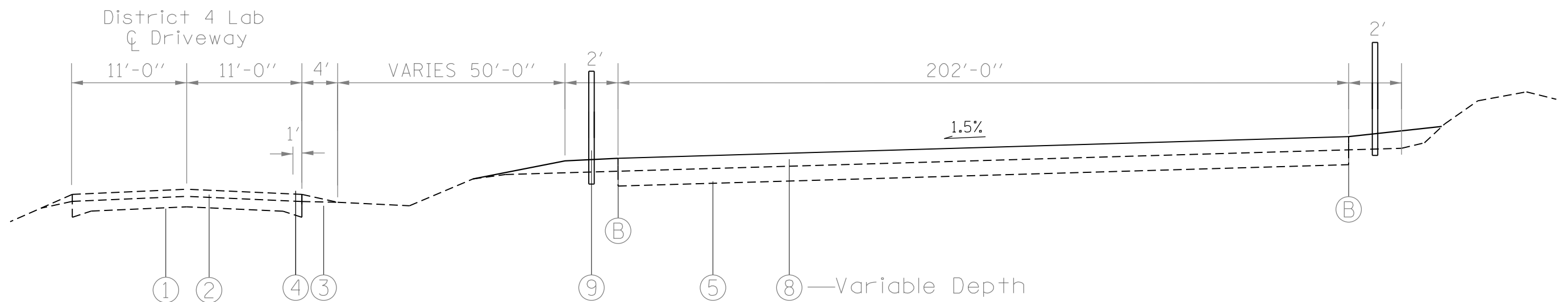
- ① EXISTING PCC PAVEMENT
- ② EXISTING HMA OVERLAY
- ③ EXISTING AGGREGATE SHOULDERS
- ④ EXISTING PAVEMENT MARKING
- ⑤ EXISTING AGGREGATE BASE
  
- ⑧ PROPOSED AGGREGATE SURF CSE, TY B
- ⑨ PROPOSED CHAIN LINK FENCE, 6' FT
- ⑩ PROPOSED FURNISHED EXCAVATION
  
- ☒ PROPOSED EARTH EXCAVATION



PROPOSED TYPICAL SECTION  
WEST ENTRANCE  
(SEE SHEET 13 FOR PROFILE)



PROPOSED TYPICAL SECTION  
SOUTH ENTRANCE



PROPOSED TYPICAL SECTION  
STA 30+80.54 TO STA 34+87.27

Ⓑ EDGE OF PROPOSED PARKING LOT

MODEL: 140826MAMES  
FILE: 140826\_01.DWG

USER NAME = \$USERS	DESIGNED -	REVISED -
PLOT SCALE = \$SCALE\$	DRAWN -	REVISED -
PLOT DATE = \$DATE\$	CHECKED -	REVISED -
	DATE -	REVISED -

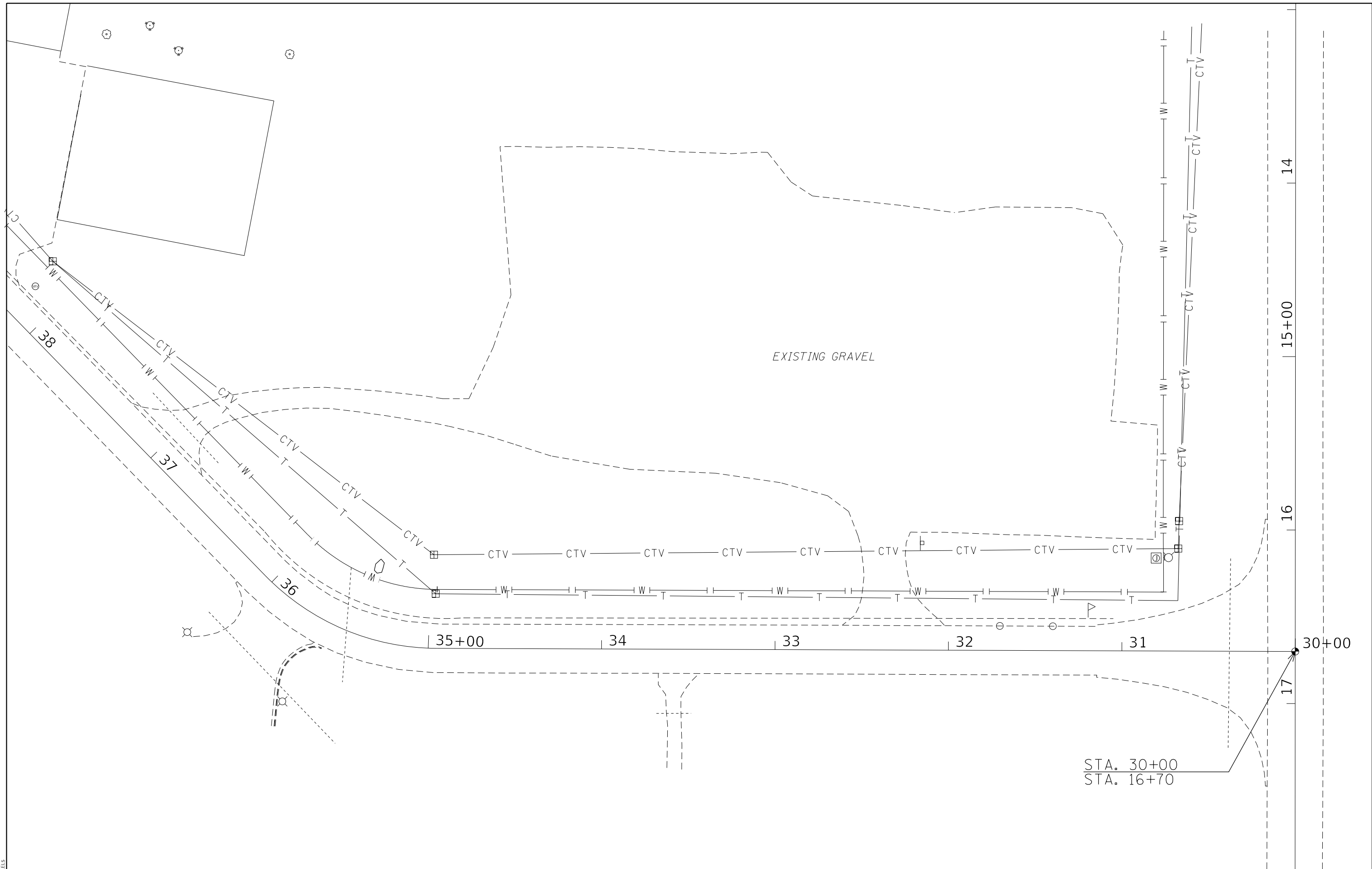
STATE OF ILLINOIS  
DEPARTMENT OF TRANSPORTATION

TYPICAL SECTIONS

SCALE: SHEET OF SHEETS STA. TO STA.

F.A. RTE.	SECTION	COUNTY	TOTAL SHEETS	SHEET NO.
	*	PEORIA	13	9
CONTRACT NO. 68E80				

ILLINOIS FED. AID PROJECT  
\* D4 PARKING IMPROVEMENT 2018



STA. 30+00  
STA. 16+70

MODEL: 140DELMAMES  
FILE: 140DMS: 37115

USER NAME = \$USERS	DESIGNED -	REVISED -
	DRAWN -	REVISED -
PLOT SCALE = \$SCALE\$	CHECKED -	REVISED -
PLOT DATE = \$DATE\$	DATE -	REVISED -

**STATE OF ILLINOIS  
DEPARTMENT OF TRANSPORTATION**

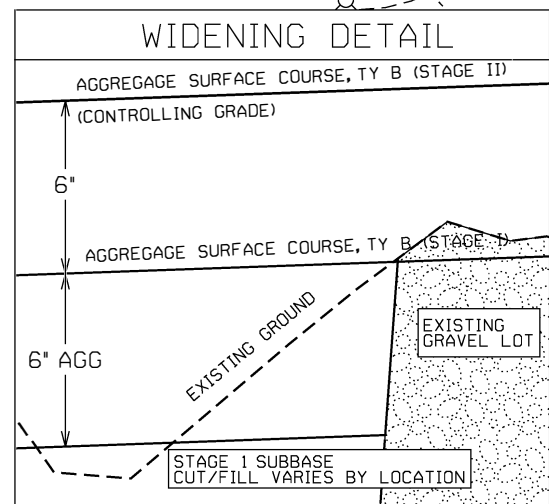
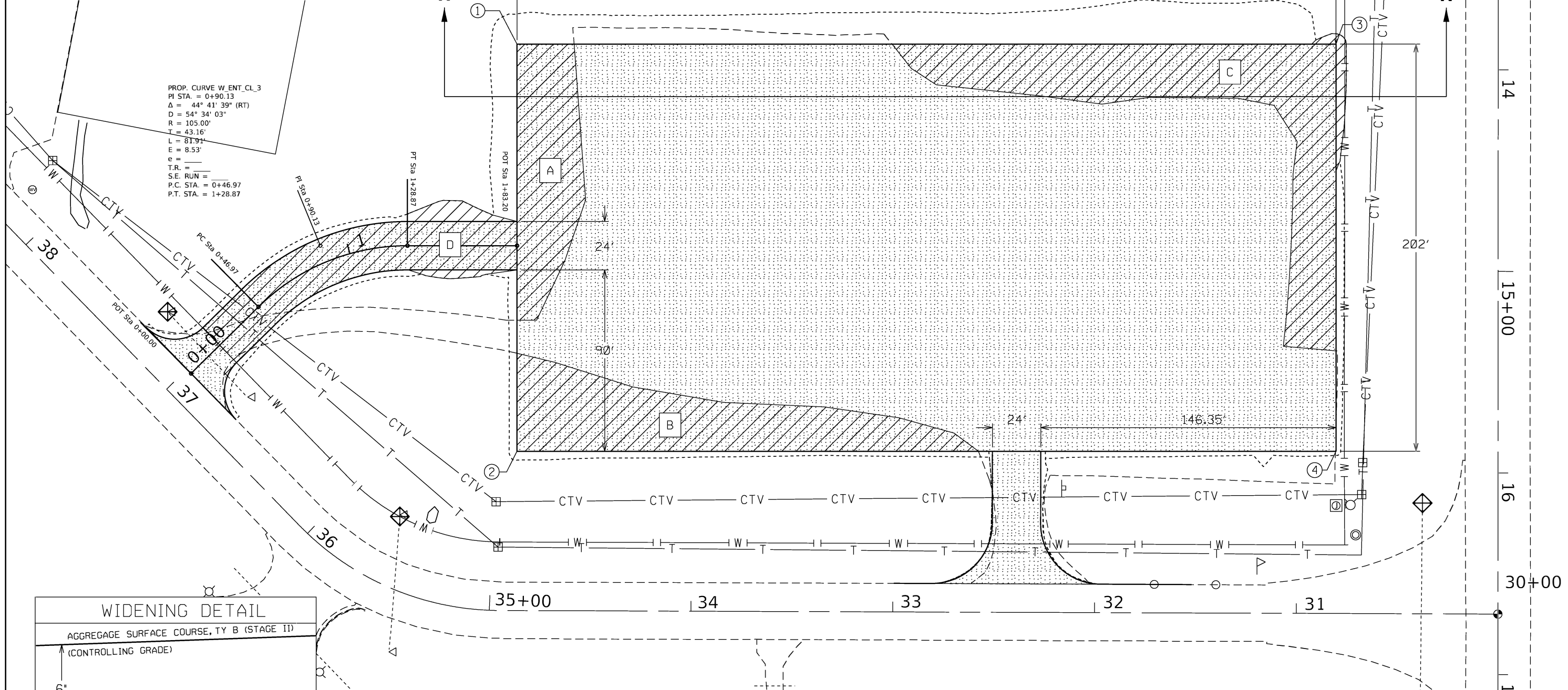
**EXISTING PLAN**

SCALE: SHEET OF SHEETS STA. TO STA.

F.A. RTE.	SECTION	COUNTY	TOTAL SHEETS	SHEET NO.
	*	PEORIA	13	10
CONTRACT NO. 68E80				

GRADE CONTROL POINTS					
POINT	STATION	OFFSET	STAGE II SURFACE ELEVATION	STAGE I SURFACE ELEVATION	STAGE I SUBBASE ELEVATION
1	37+01.45	243.86 RT	706.09	705.59	705.09
2	34+86.54	79.00 RT	703.06	702.56	702.06
3	30+81.27	282.47 RT	707.11	706.61	706.11
4	30+80.54	80.47 RT	704.08	703.58	703.08

PROP. CURVE W. ENT. CL. 3  
 PI STA. = 0+90.13  
 $\Delta = 44^\circ 41' 39''$  (RT)  
 $D = 54^\circ 34' 03''$   
 $R = 105.00'$   
 $T = 43.16'$   
 $L = 81.91'$   
 $E = 8.53'$   
 $e =$   
 $T.R. =$   
 $S.E. RUN =$   
 $P.C. STA. = 0+46.97$   
 $P.T. STA. = 1+28.87$



- PROPOSED INLET AND PIPE PROTECTION
- PROPOSED WIDENING - CUT/FILL AS NEEDED TO ESTABLISH STAGE I BASE AS SHOWN IN DETAIL
- PREPARATION OF BASE SPECIAL TO ESTABLISH STAGE I SURFACE

STAGE I QUANTITIES				
REGION	DESCRIPTION	CUT (CU YD)	FILL (CU YD)	AGG SURF CSE TY B, 6" (TON)
A	NW Widening	2.6	8.9	143.2
B	SW Widening	101.6		223.2
C	NE Widening	100.4	19.9	316.3
D	West Entrance	178.8		148.7
<b>TOTAL</b>		<b>383.4</b>	<b>28.8</b>	<b>831.4</b>

LOCATION	PREPARATION OF BASE SPECIAL (SQ YD)
Parking Lot	9112.4
West Entrance	513.4
South Entrance	218.2
<b>Total</b>	<b>9844</b>

MODEL: \$MODELNAME\$  
FILE NAME: \$FILE\$

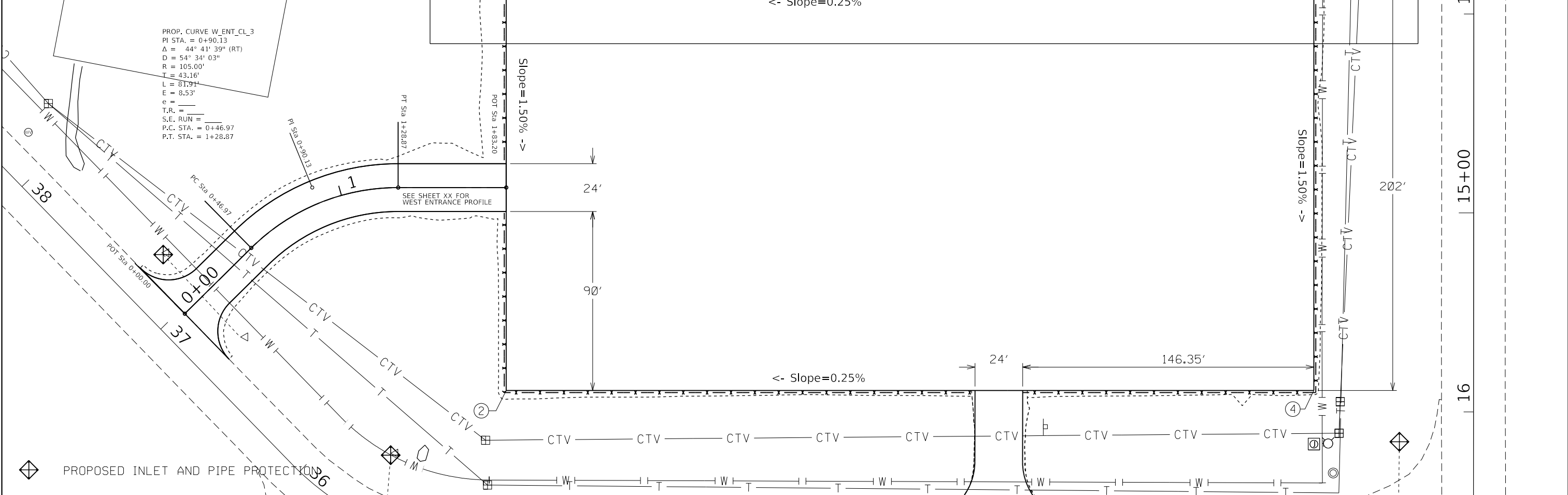
USER NAME = \$USERS\$	DESIGNED -	REVISED -
PLOT SCALE = \$SCALE\$	DRAWN -	REVISED -
PLOT DATE = \$DATE\$	CHECKED -	REVISED -
	DATE -	REVISED -

**STATE OF ILLINOIS  
DEPARTMENT OF TRANSPORTATION**

<b>STAGE I - PROPOSED PLAN</b>			
SCALE:	SHEET	OF SHEETS	STA. TO STA.

F.A. RTE.	SECTION	COUNTY	TOTAL SHEETS	SHEET NO.
	*	PEORIA	13	11
CONTRACT NO. 68E80				

GRADE CONTROL POINTS			
POINT	STATION	OFFSET	STAGE II SURFACE ELEVATION
1	37+01.45	243.86 RT	706.09
2	34+86.54	79.00 RT	703.06
3	30+81.27	282.47 RT	707.11
4	30+80.54	80.47 RT	704.08



**STAGE II QUANTITIES**

LOCATION	BANK CUT (CU YD)	BANK FILL (CU YD)	LOCATION	AGG SURF CSE, TY B (TON)
West Ent. N. Edge Apron	-	7	WEST ENTRANCE	161.77
West Ent. S. Edge Apron	-	5.98	SOUTH ENTRANCE	20.07
Parking Lot Apron	0.55	266.98	PARKING LOT	3113.42
<b>STAGE II SUBTOTAL</b>	<b>0.55</b>	<b>279.96</b>	<b>STAGE II SUBTOTAL</b>	<b>3295.26</b>

LOCATION	SEEDING, CLASS 2 (ACRE)	FERTILIZER		
		Nitrogen, 90lb/acre (LB)	Phosphorus, 90lb/acre (LB)	Potassium, 90lb/acre (LB)
JOBSITE	0.28	45	45	45
<b>TOTAL</b>	<b>0.50</b>	<b>45</b>	<b>45</b>	<b>45</b>

LOCATION	CHAIN LINK FENCE, 6' (FT)	CHAIN LINK DOUBLE GATE, 24' (EACH)
North Side	408	-
East Side	204	-
South Side	384	1.00
West Side	180	1.00
<b>TOTAL</b>	<b>1176</b>	<b>2</b>

MODEL: S:\MODELS\FILES

USER NAME = \$USERS	DESIGNED -	REVISED -
PLOT SCALE = \$SCALES	DRAWN -	REVISED -
PLOT DATE = \$DATES	CHECKED -	REVISED -
	DATE -	REVISED -

STATE OF ILLINOIS  
DEPARTMENT OF TRANSPORTATION

SCALE:		SHEET	OF	SHEETS	STA.	TO	STA.
--------	--	-------	----	--------	------	----	------

**STAGE II - PROPOSED PLAN**

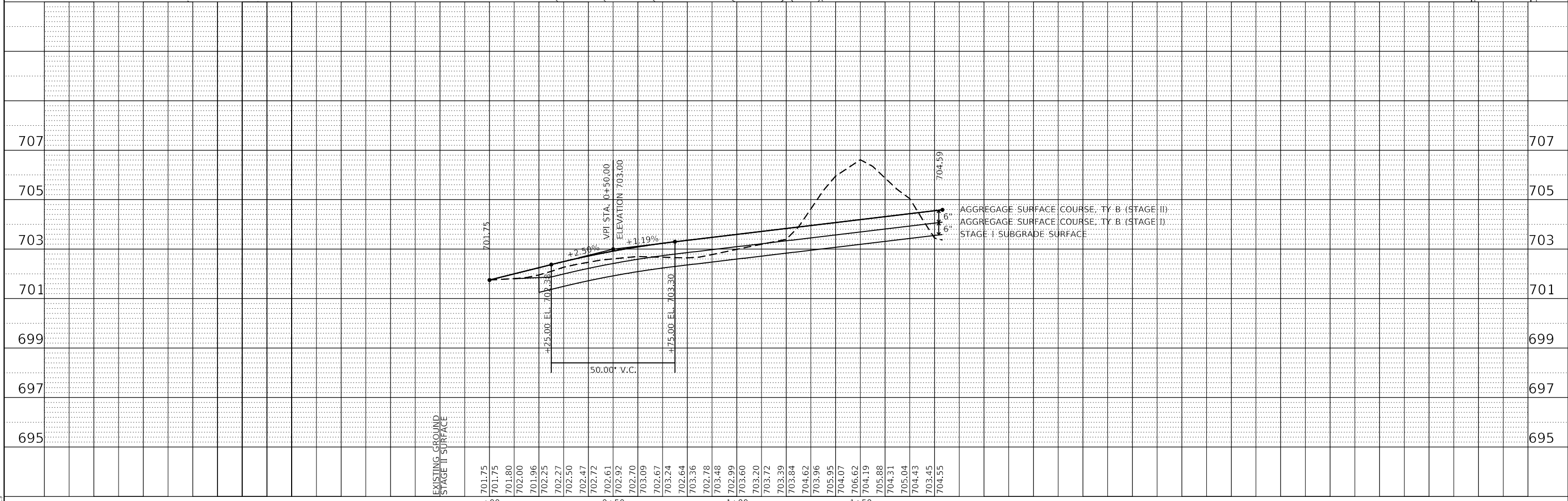
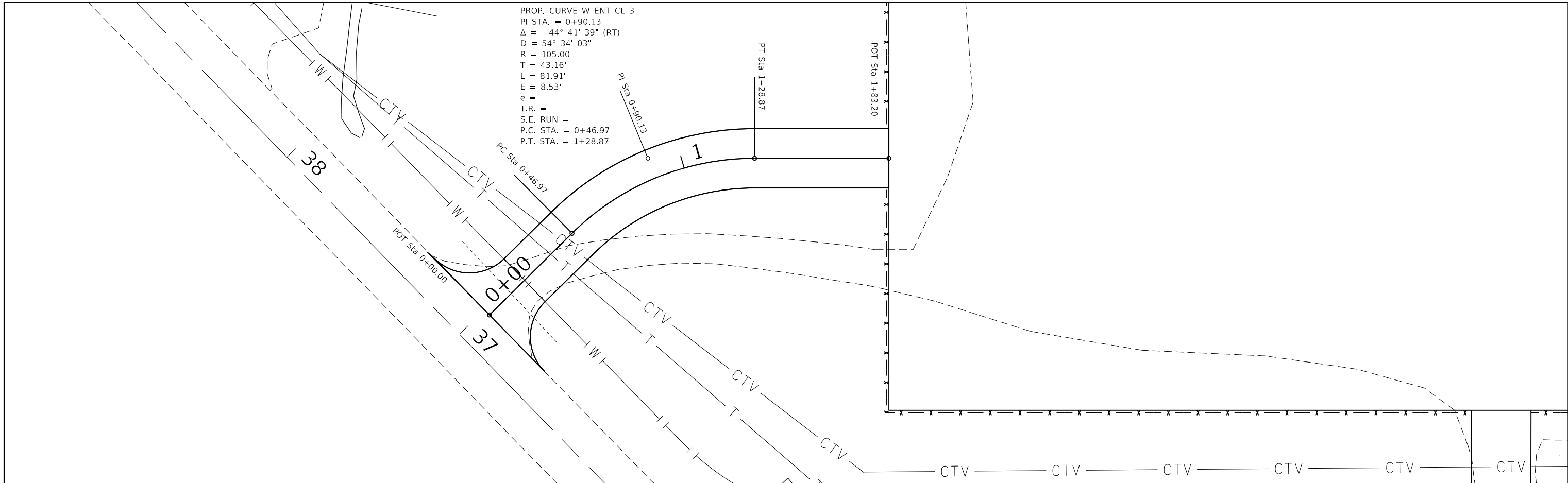
F.A. RTE.	SECTION	COUNTY	TOTAL SHEETS	SHEET NO.
	*	PEORIA	13	12
CONTRACT NO. 68E80				

PLAN	SURVEYED	DATE
	PLOTTED	
	ALIGNED	
	CHECKED	
	FILE NAME	
	NO.	

PROFILE	SURVEYED	DATE
	PLOTTED	
	GRADES CHECKED	
	STRUCTURE NOTATIONS CHECKED	
	NO.	

MODEL: SPODELNAME\$  
FILE NAME: \$FILE\$

PROP. CURVE W\_ENT\_CL\_3  
 PI STA. = 0+90.13  
 $\Delta = 44^\circ 41' 39''$  (RT)  
 $D = 54^\circ 34' 03''$   
 $R = 105.00'$   
 $T = 43.16'$   
 $L = 81.91'$   
 $E = 8.53'$   
 $e =$   
 $T.R. =$   
 $S.E. RUN =$   
 $P.C. STA. = 0+46.97$   
 $P.T. STA. = 1+28.87$



USER NAME = \$USERS	DESIGNED -	REVISED -
	DRAWN -	REVISED -
PLOT SCALE = \$SCALE\$	CHECKED -	REVISED -
PLOT DATE = \$DATE\$	DATE -	REVISED -

**STATE OF ILLINOIS  
DEPARTMENT OF TRANSPORTATION**

**WEST ENTRANCE - PLAN & PROFILE**

SCALE: SHEET OF SHEETS STA. TO STA.

F.A. RTE.	SECTION	COUNTY	TOTAL SHEETS	SHEET NO.
		PEORIA	13	13
CONTRACT NO. 68E80				