

SUMMARY OF QUANTITIES			CONSTRUCTION TYPE CODE					
CODE NO	ITEM	UNIT	TOTAL QUANTITIES	0005 80% FED 20% STATE ROADWAY	0021 80% FED 20% STATE TRAFFIC SIGNALS	0005 100% STATE		
* 87301900	ELECTRIC CABLE IN CONDUIT, EQUIPMENT	FOOT	950		950			
	GROUNDING CONDUCTOR, NO. 6 1C							
* 87900200	DRILL EXISTING HANDHOLE	EACH	71		71			△
* 88102717	PEDESTRIAN SIGNAL HEAD, LED, 1-FACE, BRACKET MOUNTED WITH COUNTDOWN TIMER	EACH	2		2			
* 88600100	DETECTOR LOOP, TYPE I	FOOT	3420		3420			△
* 89502210	MODIFY EXISTING CONTROLLER CABINET	EACH	6		6			
* 89502300	REMOVE ELECTRIC CABLE FROM CONDUIT	FOOT	2085		2085			△
* 89502350	REMOVE AND REINSTALL ELECTRIC CABLE FROM CONDUIT	FOOT	570		570			△
* 89502375	REMOVE EXISTING TRAFFIC SIGNAL EQUIPMENT	EACH	6		6			
* 89502376	REBUILD EXISTING HANDHOLE	EACH	12		12			△
* 89502378	REBUILD EXISTING HANDHOLE TO HEAVEY-DUTY HANDHOLE	EACH	6		6			
X0320050	CONSTRUCTION LAYOUT (SPECIAL)	L SUM	1	1				
X0327611	REMOVE AND REINSTALL BRICK PAVER	SO FT	389	389				

SUMMARY OF QUANTITIES			CONSTRUCTION TYPE CODE					
CODE NO	ITEM	UNIT	TOTAL QUANTITIES	0005 80% FED 20% STATE ROADWAY	0021 80% FED 20% STATE TRAFFIC SIGNALS	0005 100% STATE		
X0327989	REMOVE EXISTING BRICK PAVERS	SO FT	3896	3896				
X1400367	PEDESTRIAN SIGNAL POST, 10 FT.	FOOT	2		2			△
X1400378	PEDESTRIAN SIGNAL POST, 5 FT.	EACH	32		32			△
X4400501	COMBINATION CURB AND GUTTER REMOVAL AND REPLACEMENT LESS THAN OR EQUAL TO 10 FEET	FOOT	908	908				
X4400503	COMBINATION CURB AND GUTTER REMOVAL AND REPLACEMENT GREATER THAN 10 FEET	FOOT	318	318				
X5537800	STORM SEWERS TO BE CLEANED 12"	FOOT	1050			1050		
X6030310	FRAMES AND LIDS TO BE ADJUSTED (SPECIAL)	EACH	102	102				
X6431220	REMOVE AND REPLACE IMPACT ATTENUATOR SAND MODULE	EACH	2	2				
X6700407	ENGINEER'S FIELD OFFICE, TYPE A (D1)	CAL MO	12	12				
X8760200	ACCESSIBLE PEDESTRIAN SIGNALS	EACH	46		46			
X8780012	CONCRETE FOUNDATION, TYPE A 12-INCH DIAMETER	FOOT	140	140				
Z0018500	DRAINAGE STRUCTURES TO BE CLEANED	EACH	80			80		
Z0030850	TEMPORARY INFORMATION SIGNING	SO FT	309	309				
Z0033044	RE-OPTIMIZE TRAFFIC SIGNAL SYSTEM LEVEL 1	EACH	6		6			
Z0048665	RAILROAD PROTECTIVE LIABILITY INSURANCE	L SUM	1	1				

* = SPECIALTY ITEMS

△ REVISED SHEET 2/22/2024

FILE NAME =	USER NAME =	DESIGNED -	REVISED -
pw:\N\dot-pw\benley.com\PIWIDOT\Documents\DOT - Office\Dist\1\Projects\DI2\222\CADdata\Design\DI2\222-sh-5	Ster.Khan	DRAWN -	REVISED -
		CHECKED -	REVISED -
		DATE -	REVISED -

**STATE OF ILLINOIS
DEPARTMENT OF TRANSPORTATION**

**U.S. ROUTE 6 /IL ROUTE 53 (WASHINGTON ST TO COULMBIA ST)
SUMMARY OF QUANTITIES**

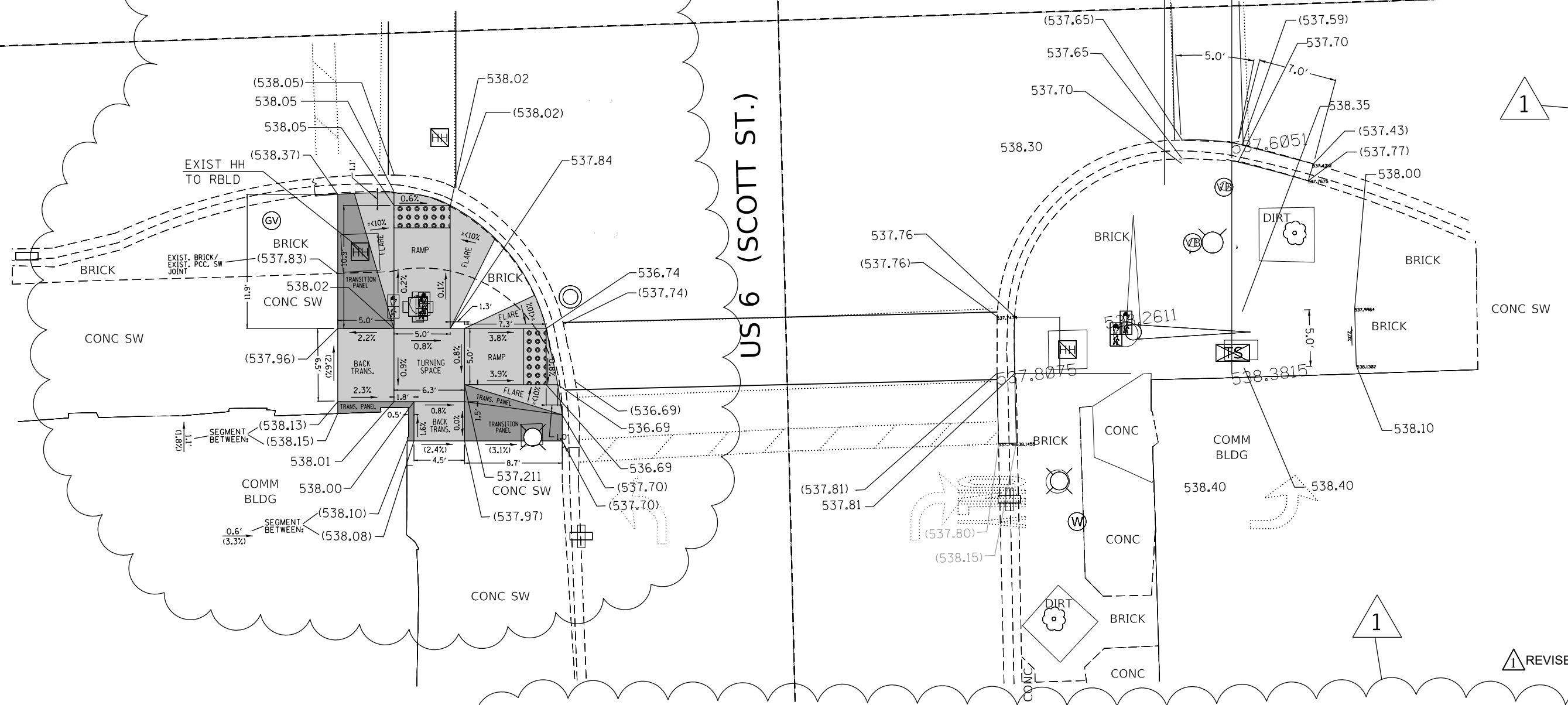
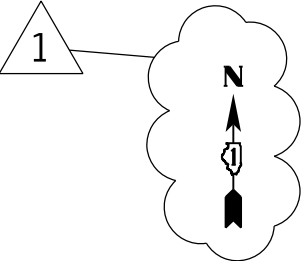
F.A.P. RTE.	SECTION	COUNTY	TOTAL SHEETS	SHEET NO.
112	FAP 0112 22 RS	WILL	56	7
FED. ROAD DIST. NO. 1 ILLINOIS FED. AID PROJECT			CONTRACT NO. 62R94	

VAULTED SIDEWALK HAS BEEN IDENTIFIED AT THIS CORNER. PLEASE PROCEED WITH CAUTION

1

CLINTON ST.

US 6 (SCOTT ST.)



1 REVISED SHEET 2/22/2024

REFERENCE BENCHMARK ELEV: 539.078
 BENCHMARK DESCRIPTION : SQUARE IN THE S. CONC. BASE OF T.S. WITH ARM
 BENCHMARK LOCATION : AT NW. CORNER OF SCOTT ST. AND CLINTON ST.

LEGEND

- xx.xx' EXISTING LENGTH
- PROPOSED SIDE CURB
- () EXISTING ELEVATION/SLOPE
- PROPOSED SIDEWALK
- TRANSITION PANEL (TIE TO EXIST. JOINT)
- DETECTABLE WARNINGS
- / / / / SIDEWALK REMOVAL REPLACE W/TOPSOIL & SOD

S.W. AND S.E. CORNER OF IL-53 / SCOTT ST. & CLINTON ST.

MODEL: Default
FILE: \\nas01\paw\benchey.com\PROJECTS\112222\112222\CADD\data\Drawings\DOT_Offices\DHrdt_11\Project\112222\CADD\data\Drawings\DOT_Offices\DHrdt_11\Project\112222\112222-112222-112222-112222.dgn

USER NAME = Alan,Parayno	DESIGNED -	REVISIONS -
PLOT SCALE = 10.0000' / in.	DRAWN -	REVISIONS - ALP 2/22/24
PLOT DATE = 2/21/2024	CHECKED -	REVISIONS -
	DATE -	REVISIONS -

STATE OF ILLINOIS
DEPARTMENT OF TRANSPORTATION

PEDESTRIAN CURB RAMP DETAIL PLAN
U.S. ROUTE 6 / IL ROUTE 53 (WASHINGTON ST TO COLUMBIA ST)

SCALE: SHEET OF SHEETS STA. TO STA.

F.A.P. RTE.	SECTION	COUNTY	TOTAL SHEETS	SHEET NO.
112	FAP 0112 22 RS	WILL	56	17
CONTRACT NO. 62R94				
		ILLINOIS	FED. AID PROJECT	