

STATE OF ILLINOIS  
DEPARTMENT OF TRANSPORTATION

F.A.P. RTE.	SECTION	COUNTY	TOTAL SHEETS	SHEET NO.
171	FAP 372 23 BP	COOK	12	1
		ILLINOIS	CONTRACT NO. 62U95	

D-91-128-23



LOCATION OF SECTION INDICATED THUS: - [black rectangle] -

**PROPOSED  
HIGHWAY PLANS**  
FAP ROUTE 372: IL 171  
OVER BNSF RR  
PROJECT: NHPP-S2VI(525)  
SECTION: FAP 372 23 BP  
BRIDGE PAINTING  
COOK COUNTY  
C-91-182-23

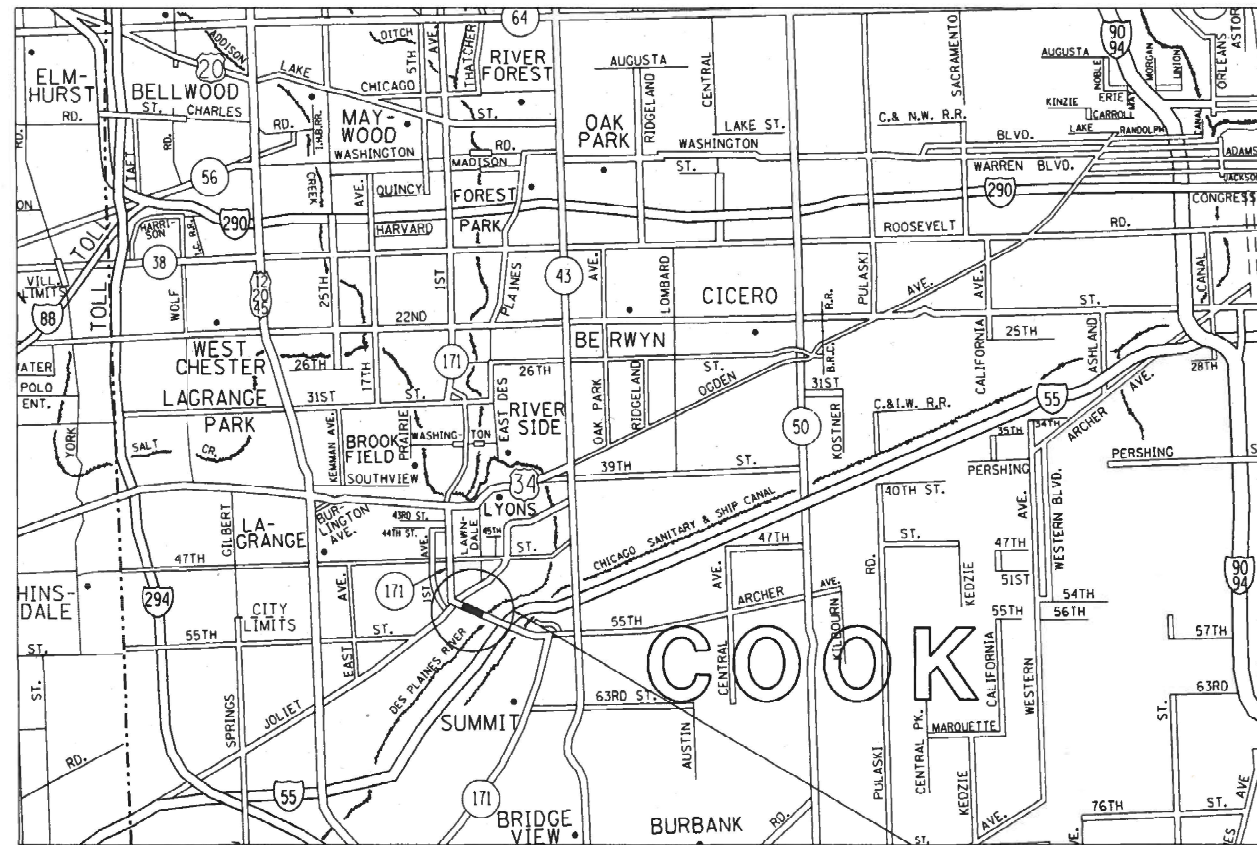
R 12 E

FOR INDEX OF SHEETS, SEE SHEET NO. 2

**TRAFFIC DATA**

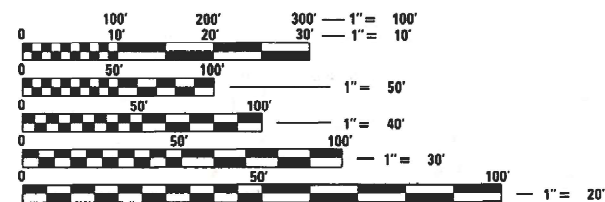
**LOCATION 1**  
STRUCTURE NO. 016-2454 - SPAN 2 ONLY  
IL 171 NB OVER BNSF RR  
IL 171:  
2021 ADT = 19,250  
SPEED LIMIT = 50 MPH

**LOCATION 2**  
STRUCTURE NO. 016-2455 - SPAN 2 ONLY  
IL 171 SB OVER BNSF RR  
IL 171:  
2021 ADT = 19,250  
SPEED LIMIT = 50 MPH



T 38 N

THIS IMPROVEMENT IS LOCATED IN THE VILLAGE OF SUMMIT



FULL SIZE PLANS HAVE BEEN PREPARED USING STANDARD ENGINEERING SCALES. REDUCED SIZED PLANS WILL NOT CONFORM TO STANDARD SCALES. IN MAKING MEASUREMENTS ON REDUCED PLANS, THE ABOVE SCALES MAY BE USED.

J.U.L.I.E.  
JOINT UTILITY LOCATION INFORMATION FOR EXCAVATORS  
1-800-892-0123  
OR 811

PROJECT ENGINEER: RODRIGO LEDEZMA (847) 705-4580  
PROJECT MANAGER: J. ALAIN MIDY (847) 221-3056

CONTRACT NO. 62U95

IMPROVEMENT LOCATIONS 1 & 2:  
IL 171 OVER BNSF RR  
STRUCTURE NO.:  
016-2454 - SPAN 2  
016-2455 - SPAN 2  
VILLAGE OF SUMMIT

STATE OF ILLINOIS  
DEPARTMENT OF TRANSPORTATION

SUBMITTED *November 29, 2023*  
*Juan Luis Lopez* REGIONAL ENGINEER

February 2, 2024  
*Se A. Etk*  
ENGINEER OF DESIGN AND ENVIRONMENT

February 2, 2024  
*Stephen M. Davis*  
DIRECTOR OF HIGHWAYS PROJECT IMPLEMENTATION

PRINTED BY THE AUTHORITY  
OF THE STATE OF ILLINOIS

**INDEX OF SHEETS**

1	COVER SHEET
2	INDEX OF SHEETS, STATE STANDARDS AND GENERAL NOTES
3	SUMMARY OF QUANTITIES
4-12	EXISTING BRIDGE PLANS (SN 016-2454 & 016-2455)

**STATE STANDARDS**

<u>STANDARD NO.</u>	<u>DESCRIPTION</u>
000001-08	STANDARD SYMBOLS, ABBREVIATIONS AND PATTERNS
701901-09	TRAFFIC CONTROL DEVICES

**GENERAL NOTES**

- 1 BEFORE STARTING ANY EXCAVATION, THE CONTRACTOR SHALL CALL "J.U.L.I.E." AT (800) 892-0123 FOR FIELD LOCATIONS OF BURIED ELECTRIC, TELEPHONE, AND GAS UTILITIES. 48 HOUR NOTIFICATION IS REQUIRED.
- 2 THE CONTRACTOR SHALL COORDINATE CONSTRUCTION ACTIVITIES WITH UTILITY COMPANIES, AND THE VILLAGE OF SUMMIT.
- 3 THE CONTRACTOR WILL NOT BE ALLOWED TO SET UP A YARD OR FIELD OFFICE ON STATE PROPERTY WITHOUT WRITTEN PERMISSION FROM THE DEPARTMENT.
- 4 THESE PLANS HAVE BEEN PREPARED FROM NOTES RECEIVED FROM THE BUREAU OF MAINTENANCE BRIDGE INSPECTORS.
- 5 IT SHALL BE THE CONTRACTOR'S RESPONSIBILITY TO PROTECT AND MAINTAIN THE EXISTING BRIDGE LIGHTING AT ANY LOCATIONS THAT LIGHTING IS ENCOUNTERED ADJACENT TO AN AREA TO BE CLEANED AND PAINTED.
- 6 THE CONTRACTOR SHALL BE REQUIRED TO PROVIDE ACCESS TO ABUTTING PROPERTY AT ALL TIMES DURING THE CONSTRUCTION OF THIS PROJECT.
- 7 IT SHALL BE THE CONTRACTOR'S RESPONSIBILITY TO VERIFY ALL DIMENSIONS AND CONDITIONS EXISTING IN THE FIELD PRIOR TO CONSTRUCTION AND ORDERING OF MATERIALS.
- 8 WHEN ARTIFICIAL LIGHTING IS UTILIZED IN NIGHTTIME OPERATIONS, THE CONTRACTOR SHALL EXERCISE THE UTMOST PRECAUTIONS PREVENTING ADVERSE VISIBILITY TO THE MOTORING PUBLIC AND ADJACENT RESIDENTIAL AREAS.
- 9 THE CONTRACTOR SHALL TAKE NECESSARY PRECAUTIONS TO ENSURE THAT NO DEBRIS WILL ENDANGER OR INTERFERE WITH TRAFFIC ON THE RAILROAD BENEATH THE BRIDGE ACCORDING TO ARTICLE 107.12 OF THE STANDARD SPECIFICATIONS. THIS WORK WILL NOT BE PAID FOR SEPARATELY BUT SHALL BE INCLUDED IN THE CONTRACT UNIT PRICE FOR THE APPROPRIATE PAY ITEM INVOLVED AND NO ADDITIONAL COMPENSATION WILL BE ALLOWED.
- 10 THE CONTRACTOR SHALL TAKE NECESSARY PRECAUTIONS WHEN WORKING NEAR THE ABUTMENTS IF ELECTRICAL JUNCTIONS BOXES AND ATTACHED CONDUITS ARE PRESENT.
- 11 DO NOT SCALE PLANS FOR CONSTRUCTION DIMENSIONS.

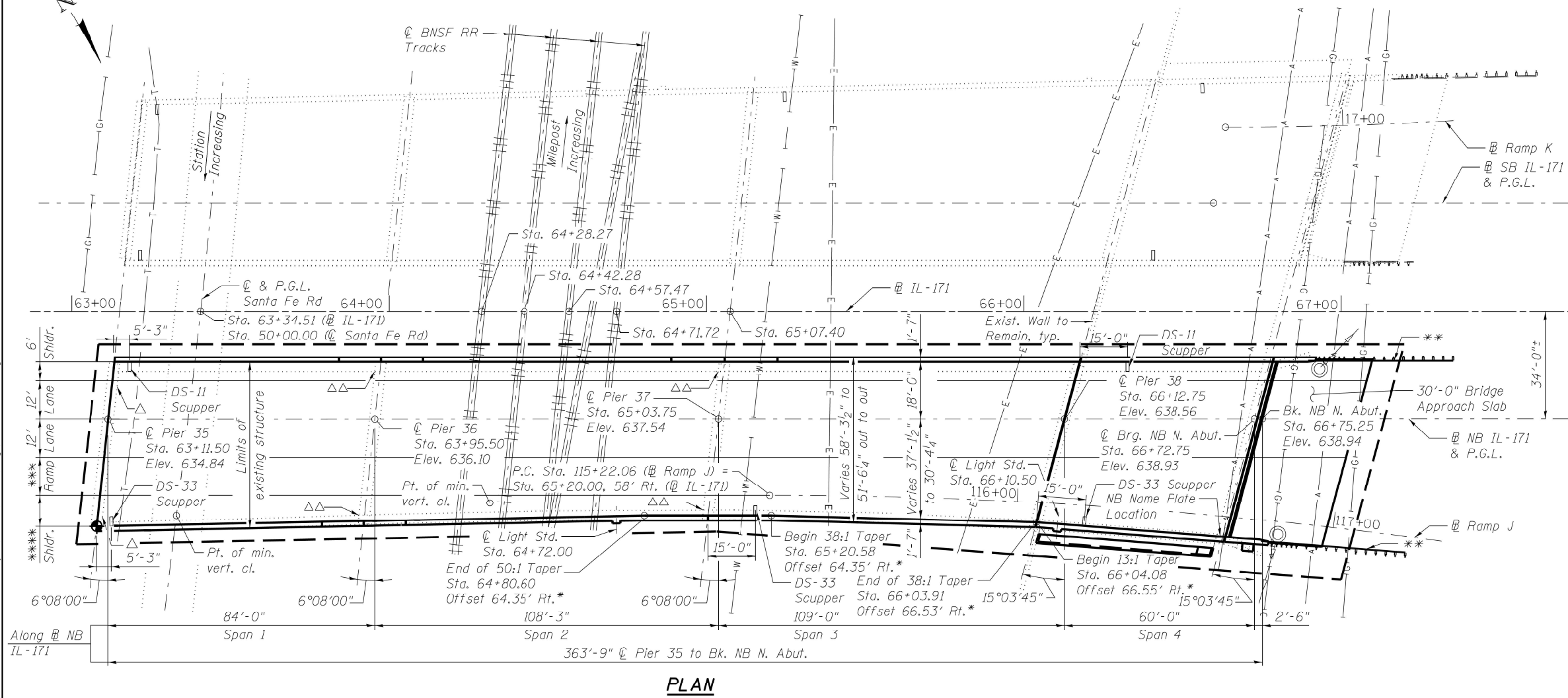
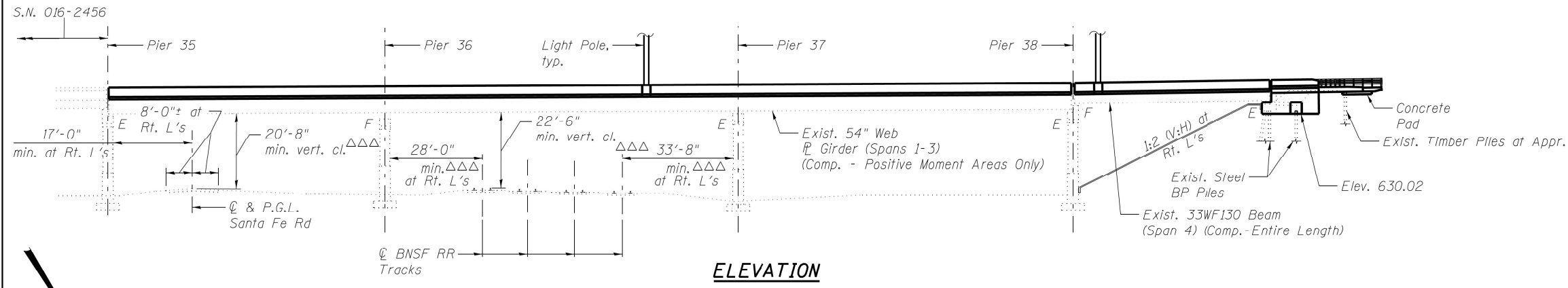
**GENERAL PAINT NOTES**

- 1 CLEANING AND PAINTING OF THE EXISTING STRUCTURAL STEEL SHALL BE AS SPECIFIED IN THE SPECIAL PROVISIONS FOR "CLEANING AND PAINTING EXISTING STEEL STRUCTURES"
- 2 ALL ITEMS (SUCH AS, BUT NOT LIMITED TO: CONDUITS, BRACKETS AND DECK DRAINS) ATTACHED TO OUTSIDE OF THE FASCIA BEAMS SHOULD BE CLEANED AND PAINTED.
- 3 FOR ALL STRUCTURES (SPAN 2 ONLY): ALL BEAMS, BEARINGS AND OTHER STRUCTURAL STEEL SHALL BE CLEANED PER NEAR WHITE BLAST SSPC-SP-10.
- 4 THESE AREAS SHALL BE PAINTED ACCORDING TO THE REQUIREMENTS OF PAINT SYSTEM 1 -OZ/E/U. THE COLOR OF THE FINAL FINISH COAT FOR ALL INTERIOR STEEL SURFACES SHALL BE GRAY, MUNSELL NO 5B 7/1. THE COLOR OF THE FINAL FINISH COAT FOR THE EXTERIOR AND BOTTOM FLANGE OF THE FASCIA BEAMS SHALL BE REDDISH BROWN, MUNSELL NO 2. 5YR 3/4.
- 5 A MINIMUM OF 2 AIR MONITORS AT SN 016-2454 & 016-2455 WILL BE REQUIRED TO MONITOR ABRASIVE BLASTING OPERATIONS. SEE SPECIAL PROVISIONS FOR "CONTAINMENT AND DISPOSAL OF LEAD PAINT CLEANING RESIDUE".
- 6 SSPC QP1 AND SSPC QP2 CERTIFICATION IS REQUIRED FOR THIS CONTRACT.

MODEL: Default  
 FILE: Main.dwg  
 PLOT: PLOT.dwg  
 USER: jacob.roth  
 PROJECT: I:\Projects\101123\CAD\Drawings\DOT\Office\District\1\Project\101123\CAD\Drawings\DOT\Office\District\1\Project\101123\shh\genenote.dgn

USER NAME = Jacob.Roth	DESIGNED -	REVISED -	<b>STATE OF ILLINOIS DEPARTMENT OF TRANSPORTATION</b>	<b>INDEX OF SHEETS, STATE STANDARDS, AND GENERAL NOTES</b>			F.A.P. RTE.	SECTION	COUNTY	TOTAL SHEETS	SHEET NO.
PLOT SCALE = 100.0000' / in.	DRAWN -	REVISED -					372	FAP 372 23 BP	COOK	12	2
PLOT DATE = 12/6/2023	CHECKED -	REVISED -		<b>IL 171 OVER BNSF RR</b>			CONTRACT NO. 62U95				
	DATE -	REVISED -		SCALE: NTS	SHEET 1 OF 1 SHEETS	STA. TO STA.	ILLINOIS FED. AID PROJECT				





MODEL: Default  
 FILE: 30162456.dwg  
 PROJECT: 016-2456  
 DRAWING: 016-2456-01  
 SHEET: 016-2456-01-04  
 DATE: 10/5/2023

USER NAME = Jacob.Roth	DESIGNED -	REVISED -
DRAWN -	REVISED -	REVISED -
PLOT SCALE = 100,0000' / in.	CHECKED -	REVISED -
PLOT DATE = 10/5/2023	DATE -	REVISED -

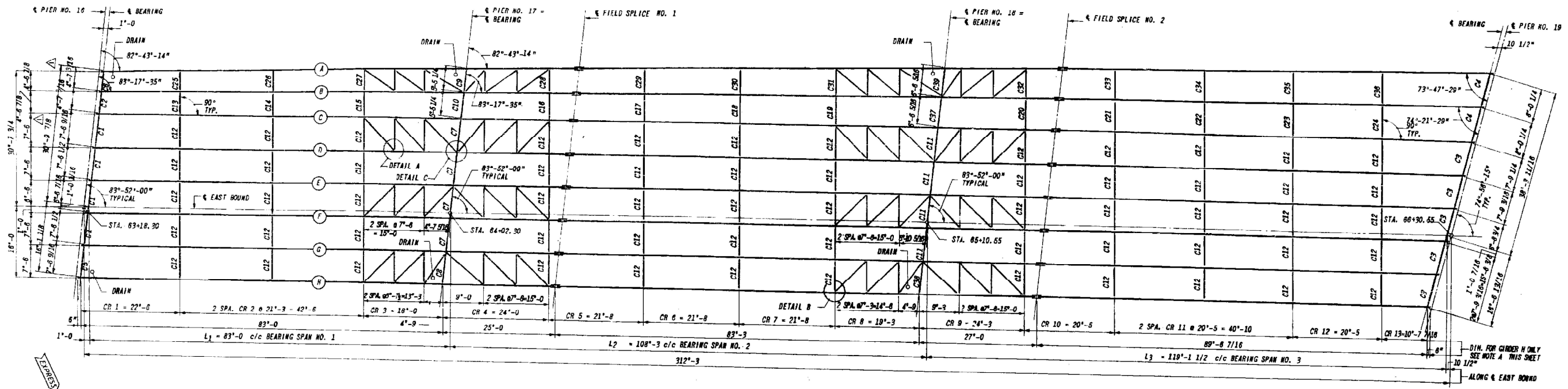
**STATE OF ILLINOIS  
DEPARTMENT OF TRANSPORTATION**

<b>GENERAL PLAN AND ELEVATION STRUCTURE NO. 016-2454</b>		F.A.P. RTE.	SECTION	COUNTY	TOTAL SHEETS	SHEET NO.
		372	FAP 372 23 BP	COOK	12	4
SCALE: SHEET 1 OF 9 SHEETS STA. TO STA.		CONTRACT NO. 62U95				

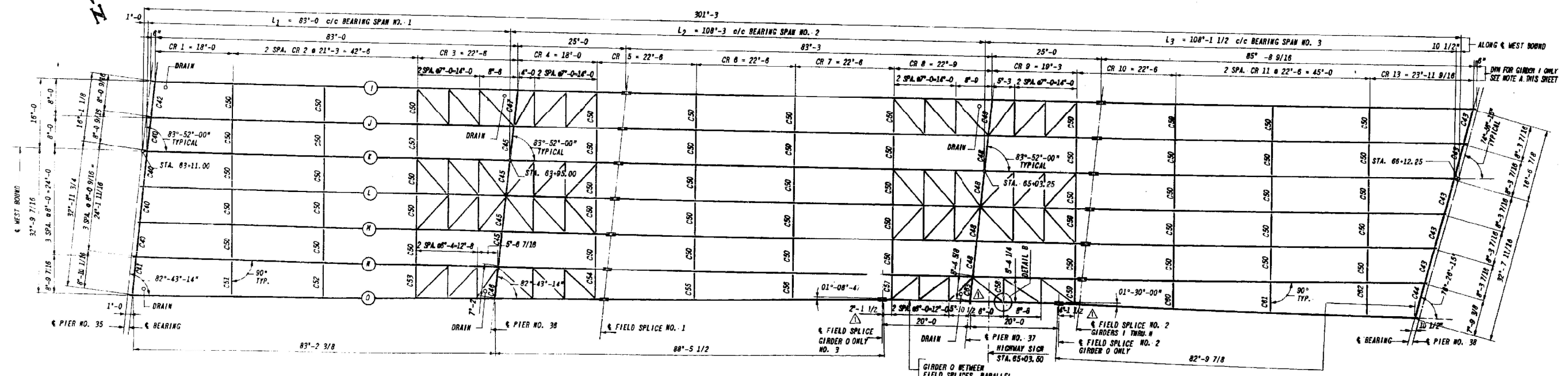
F.A.P. RTE.	SECTION	COUNTY	TOTAL SHEETS	SHEET NO.
372	FAP 372 23 BP	COOK	12	4
CONTRACT NO. 62U95				
ILLINOIS FED. AID PROJECT				







FRAMING PLAN SPAN NO. 1 THRU SPAN NO. 3 EAST BOUND



FRAMING PLAN SPAN NO. 1 THRU NO. 3 WEST BOUND

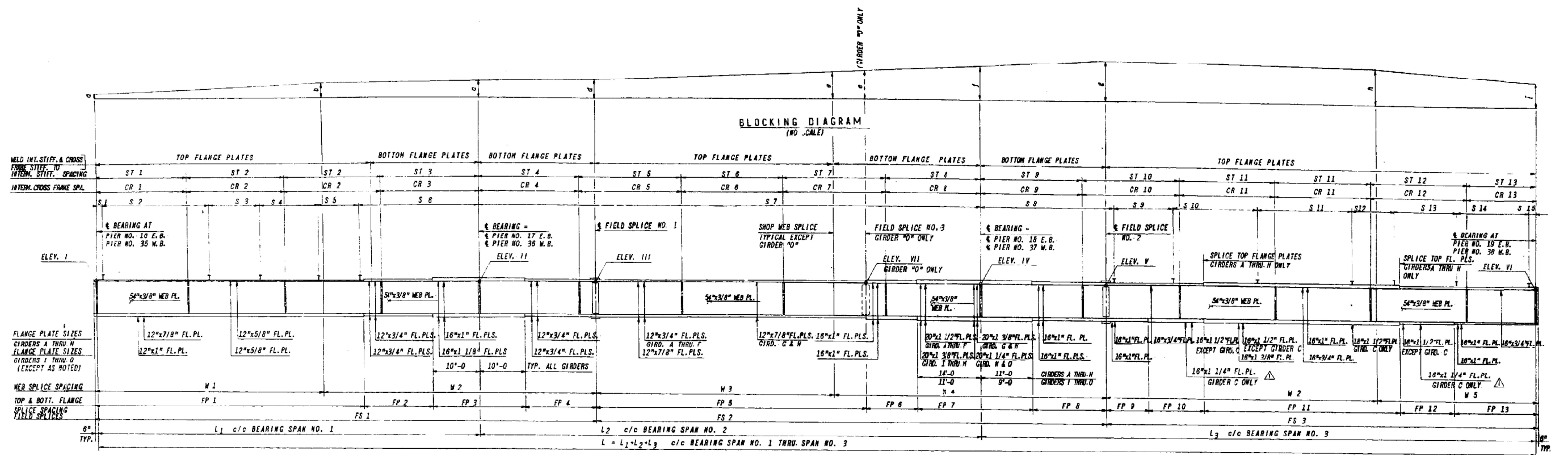
MODEL: Default  
 FILE: 62u18 - 9422 bp - 12231116.dwg  
 PLOT DATE: 10/5/2023  
 PLOT SCALE: = 100,0000' / in.  
 USER NAME: = Jacob.Roth  
 DESIGNED: -  
 DRAWN: -  
 CHECKED: -  
 DATE: -  
 REVISED: -  
 REVISED: -  
 REVISED: -  
 REVISED: -

STATE OF ILLINOIS  
DEPARTMENT OF TRANSPORTATION

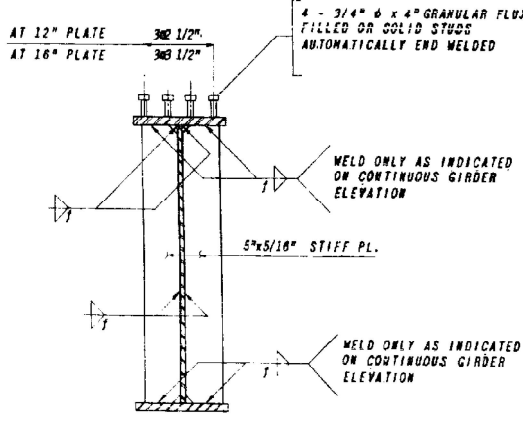
FRAMING PLAN, SPAN 1-3  
STRUCTURE NO. 016-2455

SCALE: SHEET 4 OF 9 SHEETS STA. TO STA.

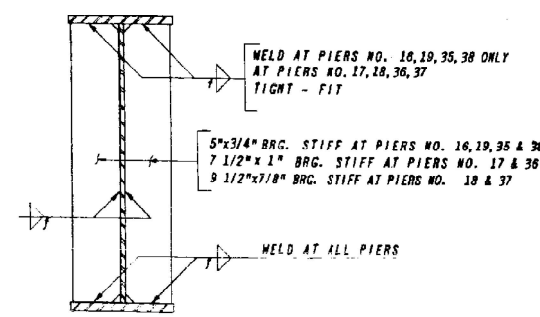
F.A.I. RTE.	SECTION	COUNTY	TOTAL SHEETS	SHEET NO.
94	FAI 90 / 94 22 BP	COOK	12	7
CONTRACT NO. 62U18				
ILLINOIS FED. AID PROJECT				



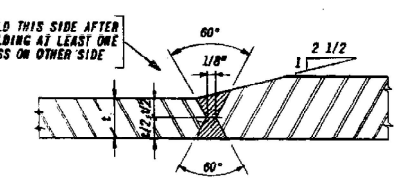
CONTINUOUS GIRDER ELEVATION



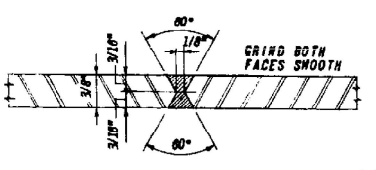
TYPICAL INTERMEDIATE STIFFENER AND SHEAR CONNECTOR DETAIL



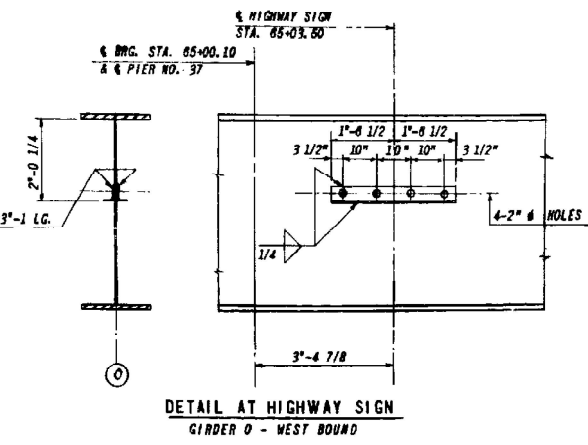
BEARING STIFFENER DETAIL



FLANGE SPLICE - SHOP WELD



WEB SPLICE - 5" WELD



FOR INFORMATION ONLY

MODEL: Default FILE: h:\a\p\build\paw\_beaufy.com\p\INDOT\Documents\DOT Office\Drawings\110101123\Cadd\data\Design\1101123-struct-details.dgn

USER NAME = Jacob.Roth	DESIGNED -	REVISED -
	DRAWN -	REVISED -
PLOT SCALE = 100,0000' / in.	CHECKED -	REVISED -
PLOT DATE = 12/13/2023	DATE -	REVISED -

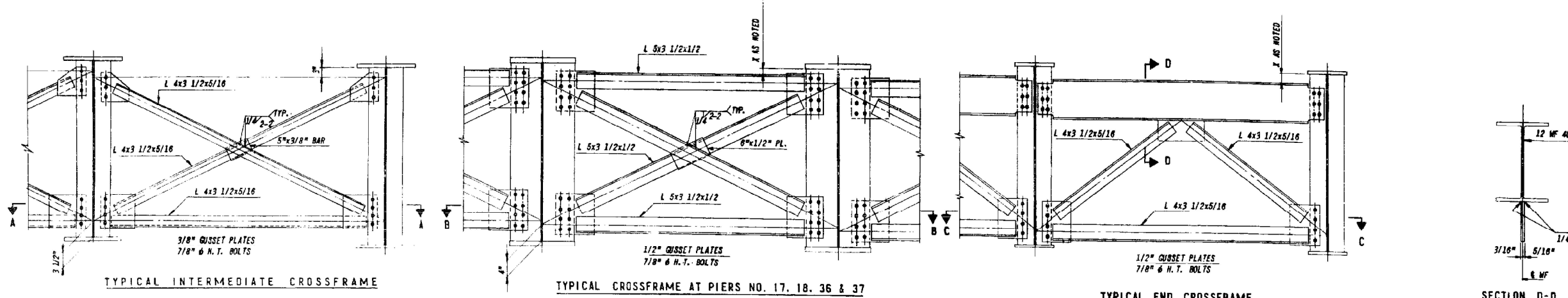
STATE OF ILLINOIS  
DEPARTMENT OF TRANSPORTATION

GIRDER DETAILS, SPANS 1-3  
STRUCTURE NO. 016-2454 & 016-2455

SCALE: SHEET 5 OF 9 SHEETS STA. TO STA.

F.A.I. RTE.	SECTION	COUNTY	TOTAL SHEETS	SHEET NO.
94	FAI 90 / 94 22 BP	COOK	12	8
ILLINOIS FED. AID PROJECT			CONTRACT NO. 62U18	

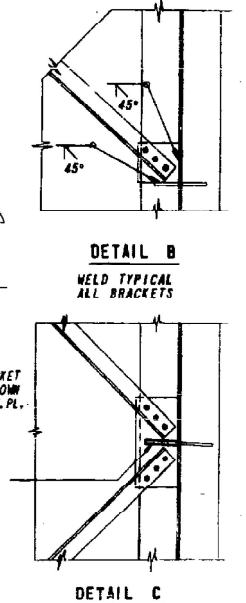
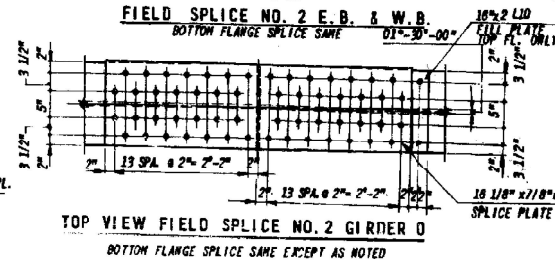
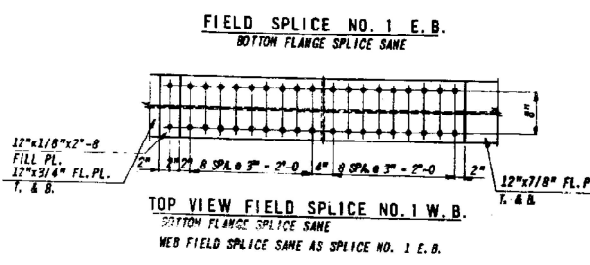
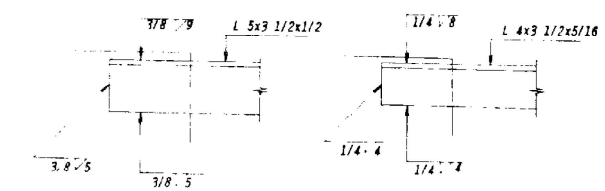
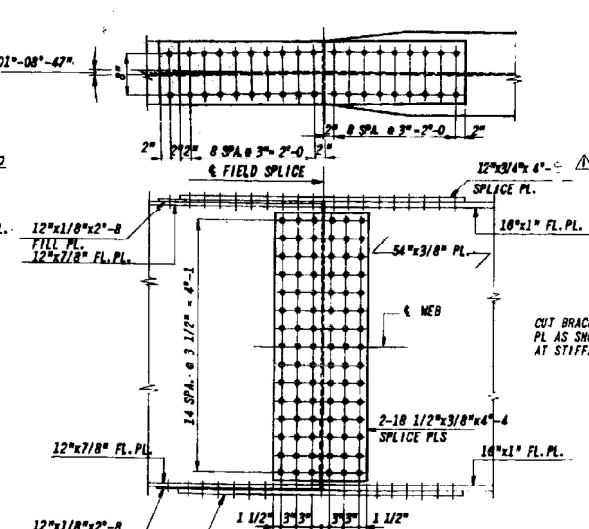
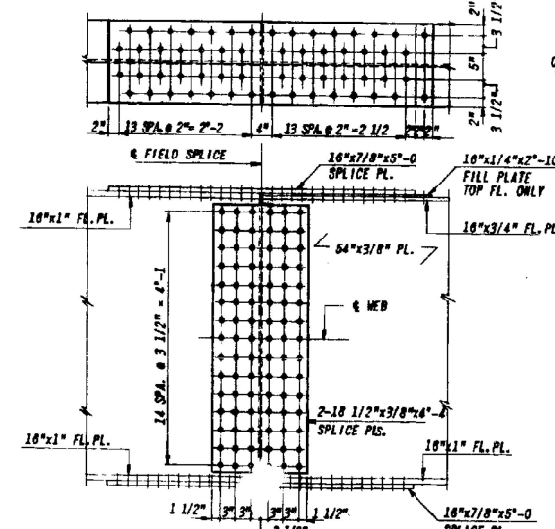
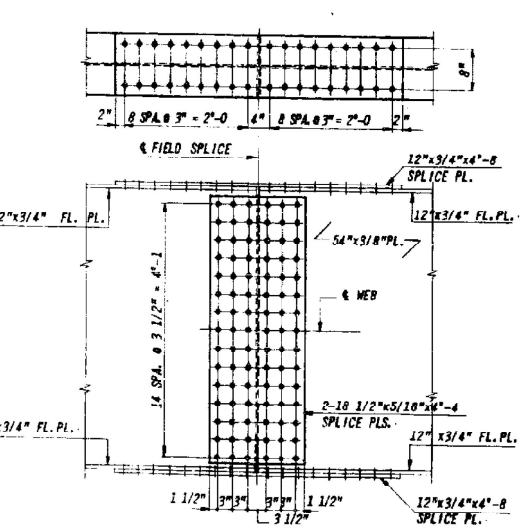
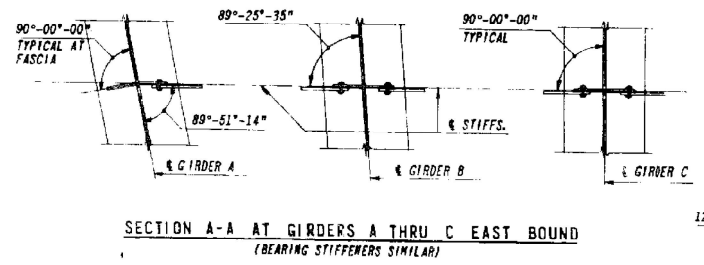
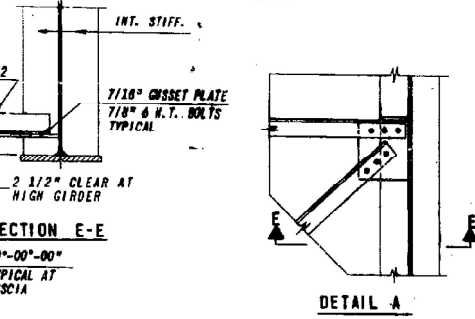
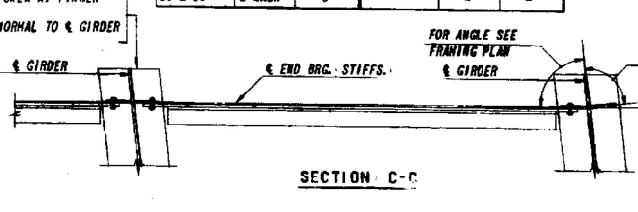
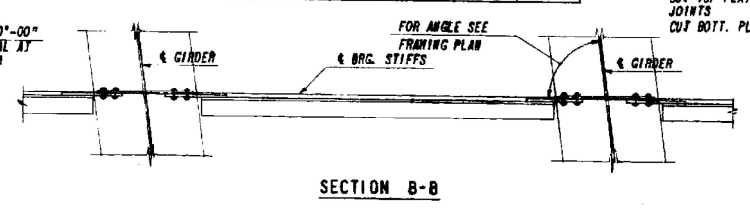
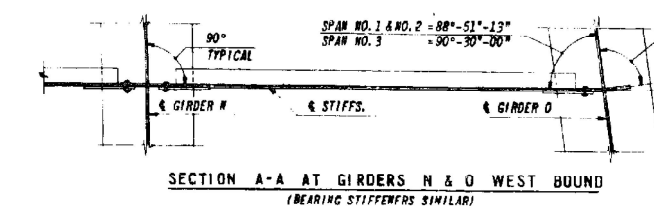




EAST BOUND		WEST BOUND	
TYPE	REQ'D	TYPE	REQ'D
C12	NO	C90	56
C13 THRU C36	1 EACH	C51 THRU C82	1 EACH

EAST BOUND		WEST BOUND			
TYPE	REQ'D	X	TYPE	REQ'D	X
C7	4	4"	C45	4	4"
C8 & C9	1 EACH	8 1/2"	C46 & C47	1 EACH	8 1/2"
C10 & C37	1 EACH	4"	C48	4	4"
C11	4	4"	C49 & C83	1 EACH	8 1/2"
C38 & C39	1 EACH	8 1/2"			

EAST BOUND		WEST BOUND			
TYPE	REQ'D	X	TYPE	REQ'D	X
C1	4	3"	C40	4	3"
C2	1	3"	C41 & C42	1 EACH	6"
C3	6	3"	C43	6	3"
C4	2	3"	C44	1	3"
C5 & C8	1 EACH	8"			



FOR INFORMATION ONLY

MODEL: Default  
 FILE: Mainfile.pwd  
 PROJECT: D:\01123\CADD\Drawings\DWG\01123-24r-detailed.dwg  
 PLOT SCALE = 100,0000' / in.  
 PLOT DATE = 12/13/2023

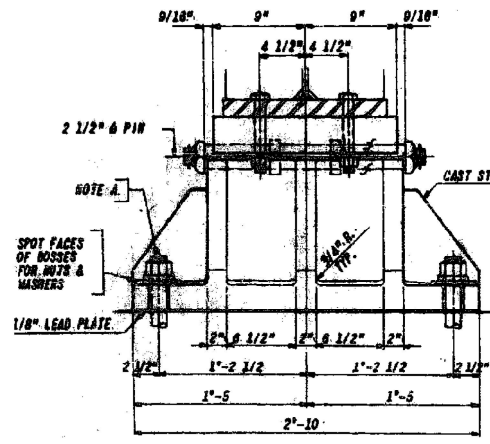
USER NAME = Jacob.Roth	DESIGNED -	REVISED -
DRAWN -	REVISED -	
PLOT SCALE = 100,0000' / in.	CHECKED -	REVISED -
PLOT DATE = 12/13/2023	DATE -	REVISED -

STATE OF ILLINOIS  
DEPARTMENT OF TRANSPORTATION

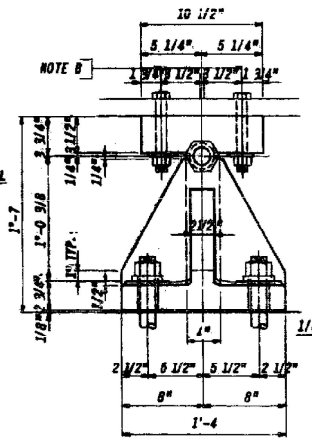
CROSS FRAME AND DIAPHRAGM DETAILS  
STRUCTURE NO. 016-2454 & 016-2455

SCALE: SHEET 6 OF 9 SHEETS STA. TO STA.

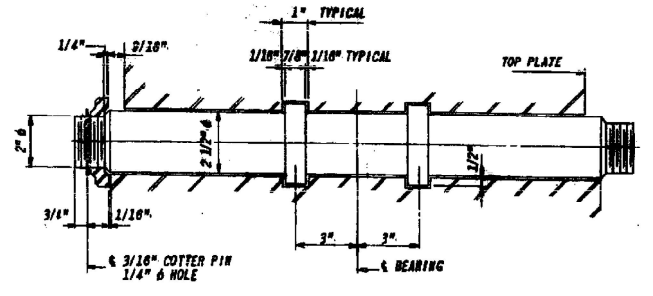
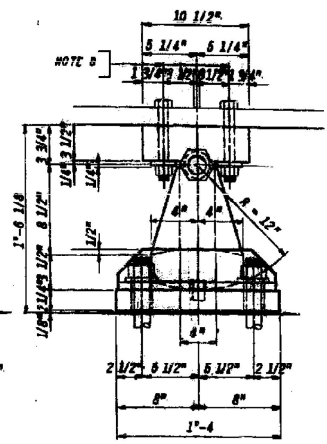
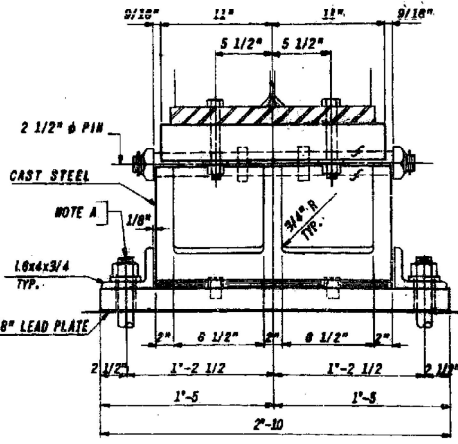
F.A.I. RTE.	SECTION	COUNTY	TOTAL SHEETS	SHEET NO.
94	FAI 90 / 94 22 BP	COOK	12	9
CONTRACT NO. 62U18			ILLINOIS FED. AID PROJECT	



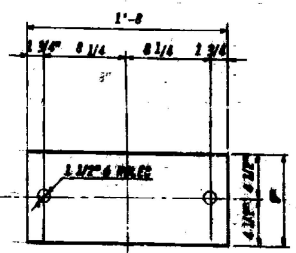
**FIXED BEARING F2**  
15 REQ'D.



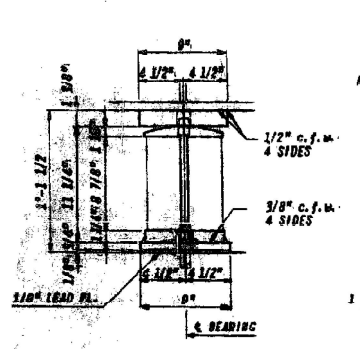
**EXPANSION BEARING E3**  
15 REQ'D



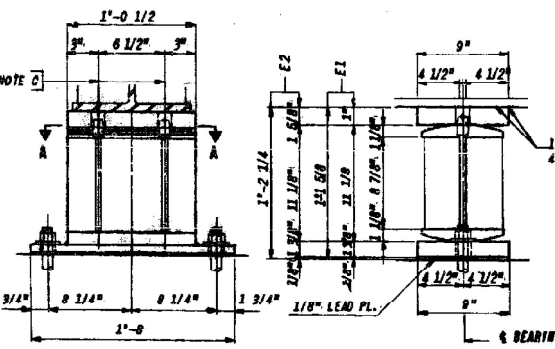
**DETAIL OF PIN**  
ALL PINS SHALL BE TURNED FROM SOLID  
1" x 3"-0



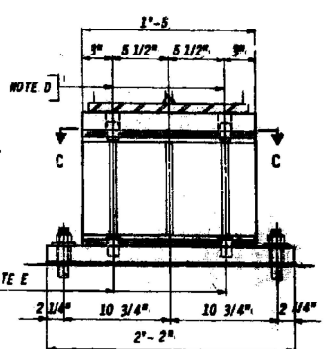
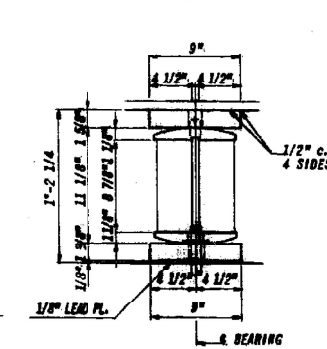
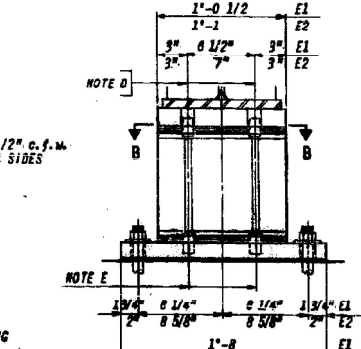
**SHIM PLATES F1**  
1 REQ'D 8/16"  
1 REQ'D 5/8"



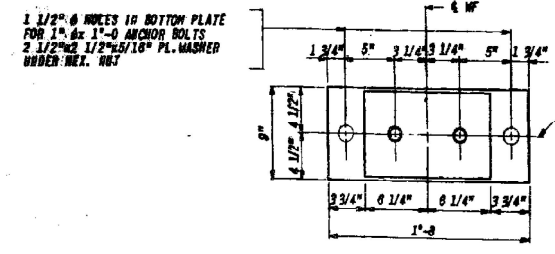
**FIXED BEARING F1**  
16 - REQ'D



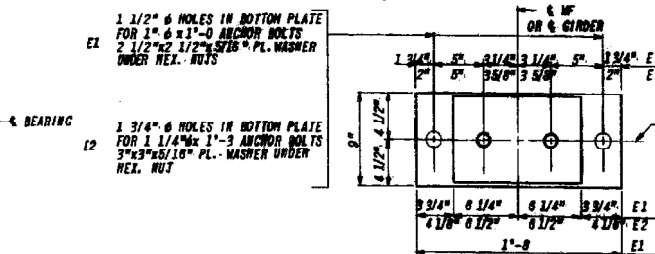
**EXPANSION BEARINGS E1 & E2**  
E1 - 16-REQ'D  
E2 - 15-REQ'D



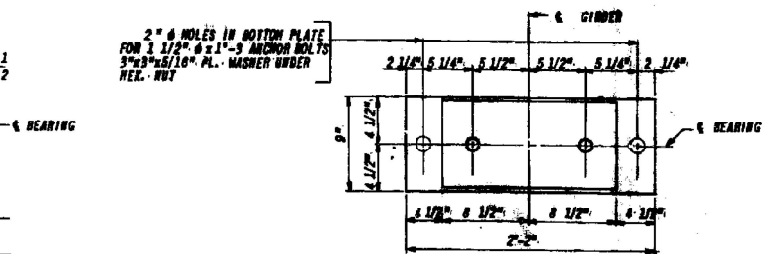
**EXPANSION BEARING E4**  
15 - REQ'D.



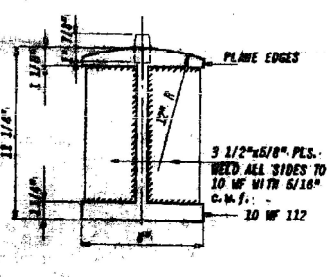
**SECTION A-A**



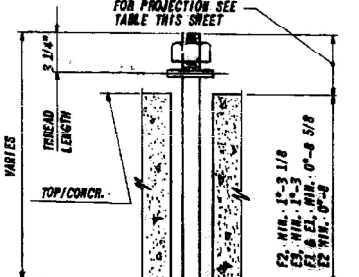
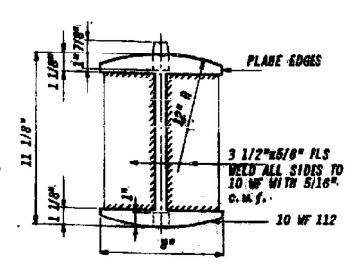
**SECTION B-B**



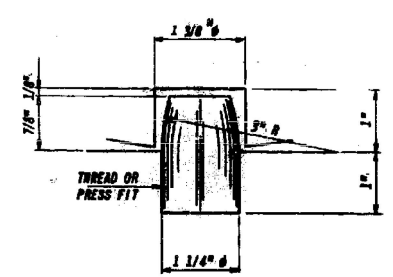
**SECTION C-C**



**ROCKER DETAIL**  
3/4" x 1"



**ANCHOR BOLT**  
NO SCALE



**PIN DETAIL**  
3/4" x 1"-0

**FOR INFORMATION ONLY**

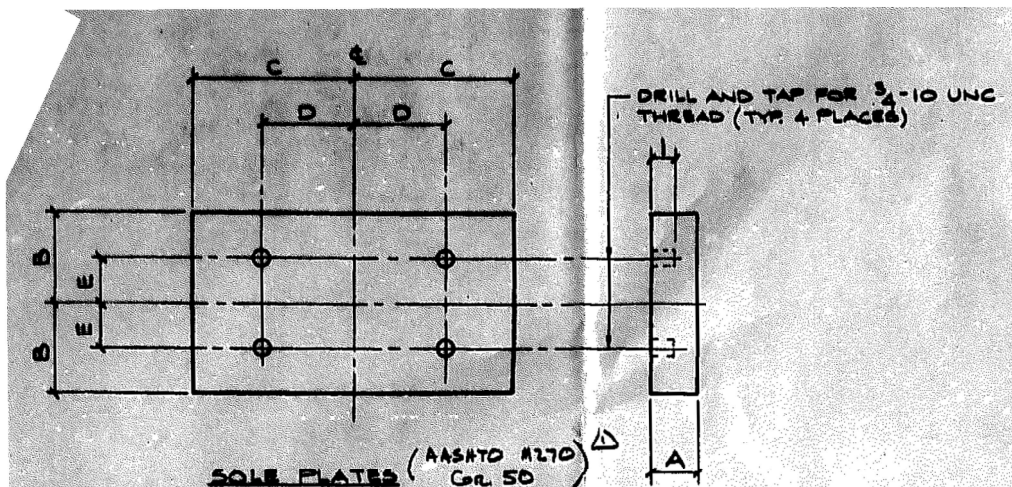
MODEL: Default  
 FILE: Mainfile.pdw  
 PROJECT: Documents\DOT Office\Drawings\1101123\Cadd\data\Design\1101123-struct-details.dwg  
 PLOT DATE: 12/13/2023

USER NAME = Jacob.Roth	DESIGNED -	REVISED -
PLOT SCALE = 100,0000' / in.	DRAWN -	REVISED -
PLOT DATE = 12/13/2023	CHECKED -	REVISED -
	DATE -	REVISED -

**STATE OF ILLINOIS**  
**DEPARTMENT OF TRANSPORTATION**

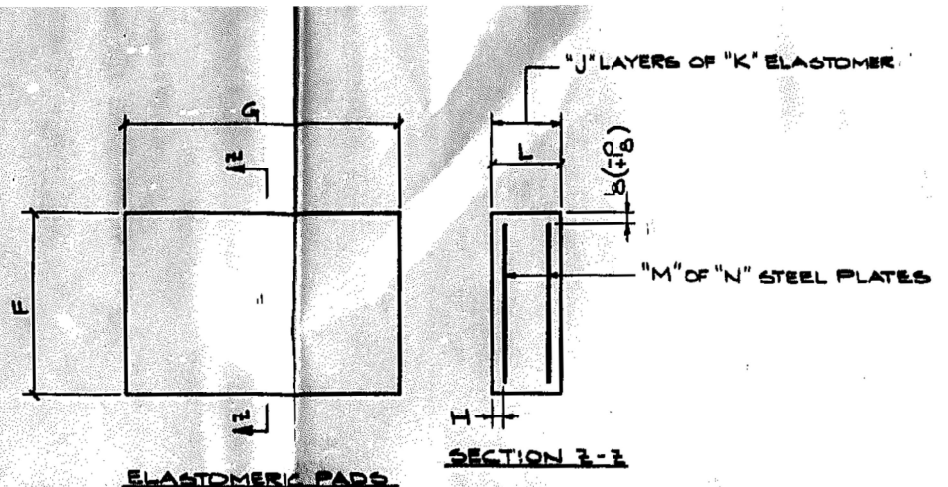
<b>BEARING DETAILS</b>	
<b>STRUCTURE NO. 016-2454 &amp; 016-2455</b>	
SCALE:	SHEET 7 OF 9 SHEETS STA. TO STA.

F.A.I. RTE.	SECTION	COUNTY	TOTAL SHEETS	SHEET NO.
94	FAI 90 / 94 22 BP	COOK	12	10
CONTRACT NO. 62U18				
ILLINOIS / FED. AID PROJECT				



**SOLE PLATES (AASHTO M270 Gr. 50)**

MARK	QTY.	PL. SIZE	A	B	C	D	E
ph	16	2x8x1/2	2	4	7	2 1/2	2
pk	15	2 1/2x10x1/2	2 1/2	5	7	2 1/2	3



**ELASTOMERIC PADS**

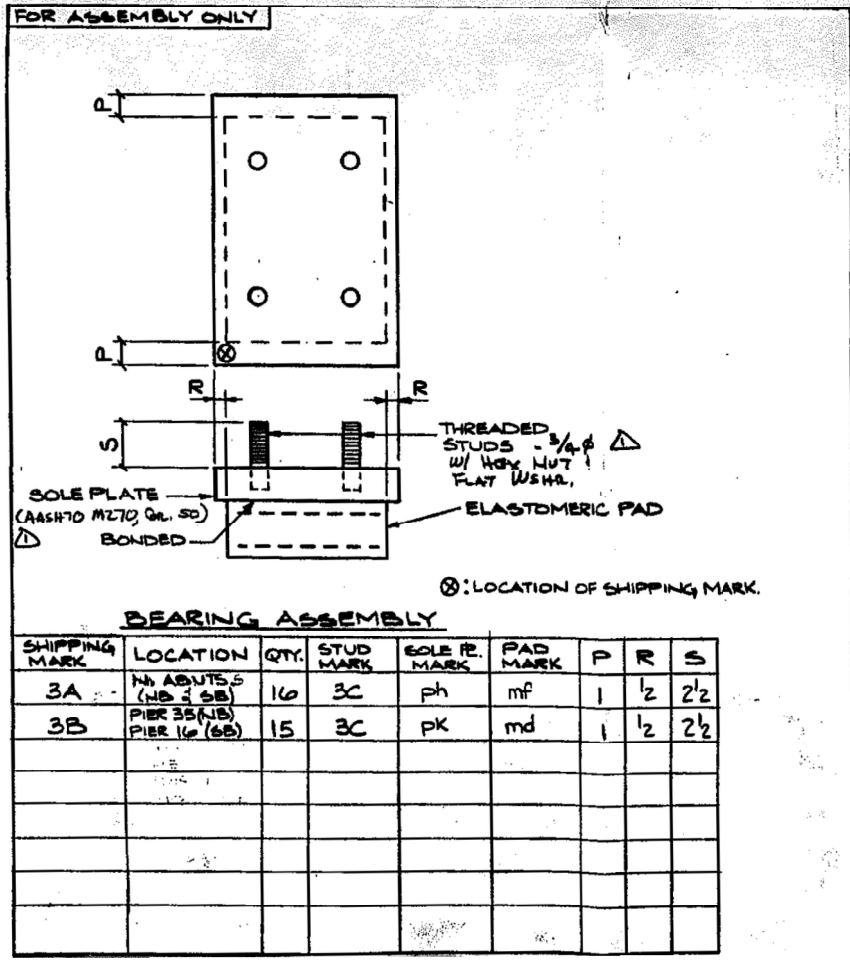
MARK	QTY.	PAD SIZE	F	G	H	J	K	L	M	N
mf	16	2 1/4x7x1 1/2	1	1 1/2	3/8	5	3/8	2 1/4	4	3/32
md	15	3 1/16x9x1 1/2	9	1 1/2	3/8	7	3/8	3 1/16	6	3/32

LINE NO.	DESCRIPTION	LENGTH	MK	REMARKS	WOHT.
1	16 BEARING ASSEMBLY - 3A		ph		
2	16 PL 2x8x1/2	11.2	ph		
3	16 LP 2 1/4 x 7	11.0	mf		
4					
5					
6					
7	15 BEARING ASSEMBLY - 3B		pk		
8	15 PL 2 1/2x10x1/2	11.2	pk		
9	15 LP 3 1/16 x 9	11.0	md		
10					
11					
12					
13					
14					
15					
16					
17					
18					
19					
20					
21					
22					
23					
24					
25					
26					
27					
28					
29					
30					
31					
32					
33					
34					
35					
36					
37					
38					
39					
40					
41					
42					
43					
44					
45					
46					
47					
48					
49					
50					
51					
52					
53					
54	FIELD BOLTS				
55	125 RS 3/4 CONT. THRD. RODS @ 3' 3/4	3C	B		12A
56	126 HW 3/4 HVY. A563DH	3D	B		12A
57	125 FW 3/4 FAB6	3F	B		12A
58					
59					
60	APPROVAL CHANGES				9-11-99 SET
REV.	DESCRIPTION				DATE INT.

Cook County S.N. 016-2454 / 016-2455  
 C-91-436-90 State Contract No. 82123

Section 606-627 VB  
 EAU 2746/1505 (IL 171)  
 STPM-7003 (115)  
 2-25-94 (15B)

REV.	DESCRIPTION	DATE	INT.
9-11-99	SET		



FOR INFORMATION ONLY

STATE OF ILLINOIS  
 DEPARTMENT OF TRANSPORTATION

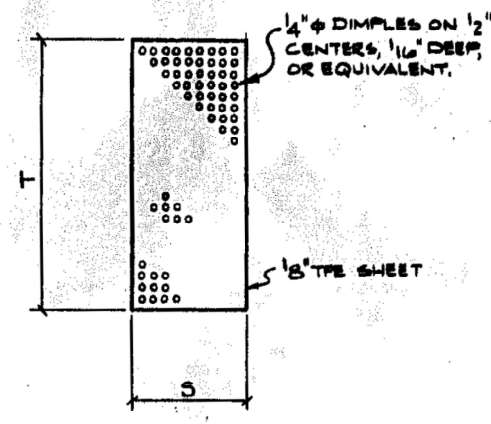
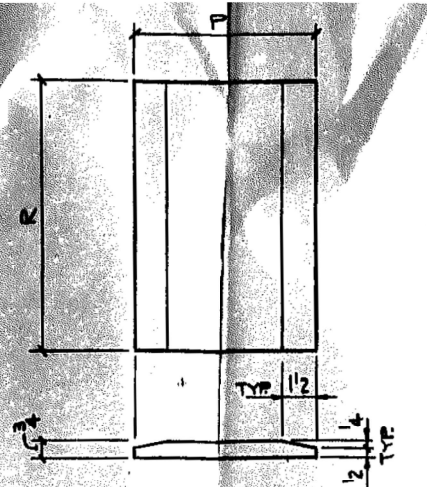
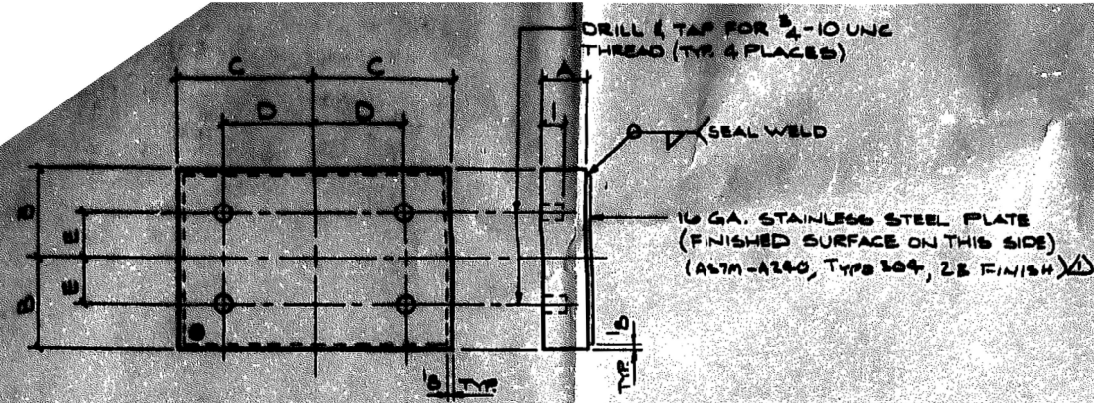
BEARING DETAILS  
 STRUCTURE NO. 016-2454 & 016-2455

F.A.I. RTE.	SECTION	COUNTY	TOTAL SHEETS	SHEET NO.
94	FAI 90 / 94 22 BP	COOK	12	11

CONTRACT NO. 62U18  
 ILLINOIS FED. AID PROJECT

SCALE: SHEET 8 OF 9 SHEETS STA. TO STA.

MODEL: Default  
 FILE: Mainfile.pdw  
 PROJECT: I:\Projects\101123\CADD\Drawings\101123-Sub-Details.dgn  
 USER: jacob.roth  
 PLOT SCALE = 100,0000' / in.  
 PLOT DATE = 12/13/2023



**TOP BEARING ASSEMBLY**

SHIPPING MARK	QTY.	P. SIZE	R. MARK	A	B	C	D	E	S.S. P. MARK	STAINLESS STEEL PLATE SIZE
4A	15	24x12x17	mm	24	6	9/2	4	4	da	16GA. x11 3/4" x 11 1/2"

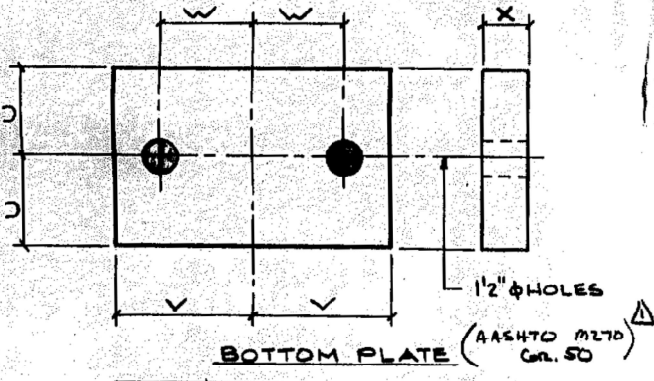
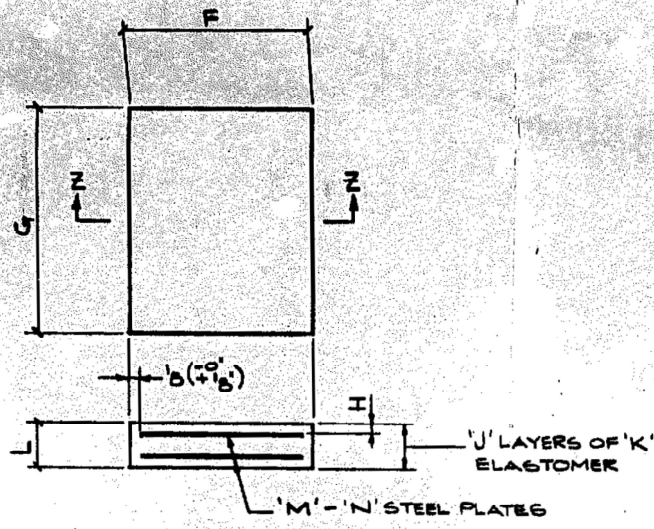
**BEVELED PLATE** (AASHTO M270 GR. 50)

MARK	QTY.	P	R
fa	15	10	11/6

**TFE SHEET**

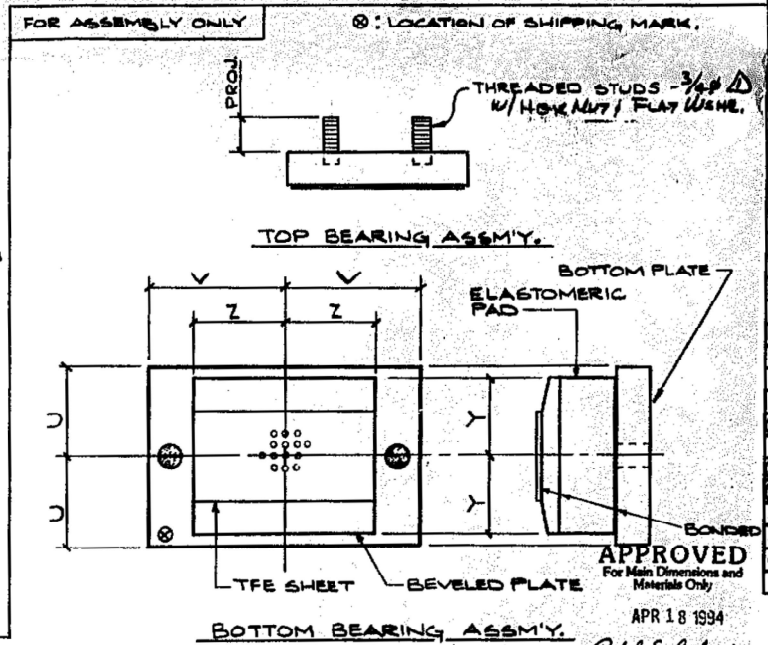
MARK	QTY.	S	T
ha	15	7	11/6

LINE NO.	DESCRIPTION	LENGTH	MK	REMARKS	WOHT.
1	15 TOP BEARING ASSEMBLY - 4A		P		
2	15 PL 24 A872 X 12	117	mm		
3	15 PL 16GA. 8550425 X 11 1/2	116 3/4	mm	SEE NOTE 4	
4					
5					
6					
7					
8					
9					
10					
11					
12					
13					
14					
15					
16					
17					
18					
19					
20					
21					
22					
23					
24					
25					
26					
27	15 BOTTOM BEARING ASSEMBLY - 4B		P		
28	15 PL 24 A872 X 10	116	fa		
29	15 PL 1/8" A872 X 11	217	ka		
30	15 LP 3/16 X 10	116	mm		
31	15 1/8" X 7 TFE	116	ha	SEE NOTE 5	
32					
33					
34					
35					
36					



MARK	QTY.	P. SIZE	U	V	W	X
ka	15	18x11x2-7	5/2	1-3/2	1-1/2	17/8

MARK	QTY.	PAD SIZE	F	G	H	J	K	L	M	N
mm	15	3 1/16 x 10 x 1/6	10	11/6	7/6	7	7/6	4 1/6	6	3 1/6



STRUCTURE	LOCATION	TOP BEARING ASSEMBLY MARK	QTY.	THEO. STUD MARK	PROJ.	BOTTOM BEARING ASSEMBLY MARK	QTY.	TFE SHEET MARK	BEVELED PLATE MARK	ELAST. PAD MARK	BOTTOM PLATE MARK	U	V	Y	Z
016-2455	PIER 19 (SB)	4A	8	4C	2 1/2	4B	8	ha	fa	mm	ka	5/2	1-3/2	5	9
016-2454	PIER 38 (NB)	4A	7	4C	2 1/2	4B	7	ha	fa	mm	ka	5/2	1-3/2	5	9

FIELD BOLTS

60 RB 3/4 CONT. THRD. 800 A825	0182	4C	60
60 HN 3/4 Hvy. A825		4D	60
60 FW 3/4 F436		4F	60

APPROVAL CHANGES

REV.	DESCRIPTION	DATE	INT.
4	11/19/94	587	

FOR INFORMATION ONLY

MODEL: Default FILE: \\miller\paw\beadef\com\paw\DOT\Documents\DOT\Office\Drawings\110123\Cadd\data\Design\011123\brd\details.dwg

USER NAME = Jacob.Roth	DESIGNED -	REVISED -
PLOT SCALE = 100,0000' / in.	DRAWN -	REVISED -
PLOT DATE = 12/13/2023	CHECKED -	REVISED -
	DATE -	REVISED -

STATE OF ILLINOIS  
DEPARTMENT OF TRANSPORTATION

BEARING DETAILS

STRUCTURE NO. 016-2454 & 016-2455

SCALE: SHEET 9 OF 9 SHEETS STA. TO STA.

F.A.I. RTE.	SECTION	COUNTY	TOTAL SHEETS	SHEET NO.
94	FAI 90 / 94 22 BP	COOK	12	12

CONTRACT NO. 62U18

ILLINOIS FED. AID PROJECT