

STATE OF ILLINOIS  
DEPARTMENT OF TRANSPORTATION

F.A.P. RTE.	SECTION	COUNTY	TOTAL SHEETS	SHEET NO.
685	[(119B) BR-1,2] BRR	MCDONOUGH	31	1
		ILLINOIS	CONTRACT NO. 68H25	

**INDEX OF SHEETS**

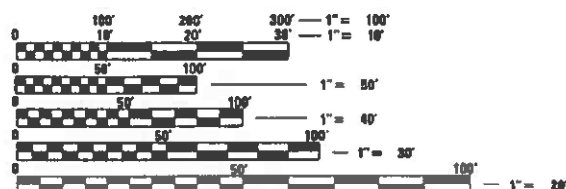
- 1 COVER SHEET
- 2 GENERAL NOTES, HIGHWAY STANDARDS & COMMITMENTS
- 3-5 SUMMARY OF QUANTITIES
- 6 TYPICAL SECTIONS
- 7-8 SCHEDULE OF QUANTITIES
- 9-10 REMOVAL PLAN
- 11-12 PLAN
- 13 BUTT JOINT DETAIL
- 14-15 PAVEMENT MARKING PLAN
- 16 STAGING TYPICAL SECTIONS
- 17-20 TRAFFIC CONTROL PLAN
- 21-28 S.N. 055-0042
- 29-31 S.N. 055-0043

**HIGHWAY STANDARDS**

- 001001-02 AREAS OF REINFORCEMENT BARS
- 420001-10 PAVEMENT JOINTS
- 606001-08 CONCRETE CURB TYPE B AND COMBINATION CONCRETE CURB AND GUTTER
- 630001-13 STEEL PLATE BEAM GUARDRAIL
- 630301-09 SHOULDER WIDENING FOR TYPE 1 (SPECIAL) GUARDRAIL TERMINALS
- 631006-08 TRAFFIC BARRIER TERMINAL, TYPE 1B
- 631031-18 TRAFFIC BARRIER TERMINAL, TYPE 6
- 701001-02 OFF-ROAD OPERATIONS, 2L, 2W, MORE THAN 15' (4.5 M) AWAY
- 701006-05 OFF-ROAD OPERATIONS, 2L, 2W, 15' (4.5 M) TO 24" (600 MM) FROM PAVEMENT EDGE
- 701201-05 LANE CLOSURE, 2L, 2W, DAY ONLY, FOR SPEEDS ≥ 45 MPH
- 701306-04 LANE CLOSURE, 2L, 2W, SLOW MOVING OPERATIONS DAY ONLY, FOR SPEEDS ≥ 45 MPH
- 701311-03 LANE CLOSURE, 2L, 2W, MOVING OPERATIONS - DAY ONLY
- 701321-18 LANE CLOSURE, 2L, 2W, BRIDGE REPAIR WITH BARRIER
- 701901-09 TRAFFIC CONTROL DEVICES
- 704001-08 TEMPORARY CONCRETE BARRIER
- 725001-01 OBJECT AND TERMINAL MARKERS
- 780001-05 TYPICAL PAVEMENT MARKINGS
- 782006-01 GUARDRAIL AND BARRIER WALL REFLECTOR MOUNTING DETAILS

**DESIGN DESIGNATION**  
MINOR PRINCIPAL ARTERIAL

ADT = 1450 (2021)  
MU = 70  
SU = 40



FULL SIZE PLANS HAVE BEEN PREPARED USING STANDARD ENGINEERING SCALES. REDUCED SIZED PLANS WILL NOT CONFORM TO STANDARD SCALES. IN MAKING MEASUREMENTS ON REDUCED PLANS, THE ABOVE SCALES MAY BE USED.

J.U.L.L.E.  
JOINT UTILITY LOCATION INFORMATION FOR EXCAVATORS  
1-800-892-0123  
OR 811

PROJECT ENGINEER: KAREN DVORSKY (309) 671-3490  
PROJECT MANAGER: ELIAS ELDERZI (309) 671-3482

CATALOG NO. 036342-000

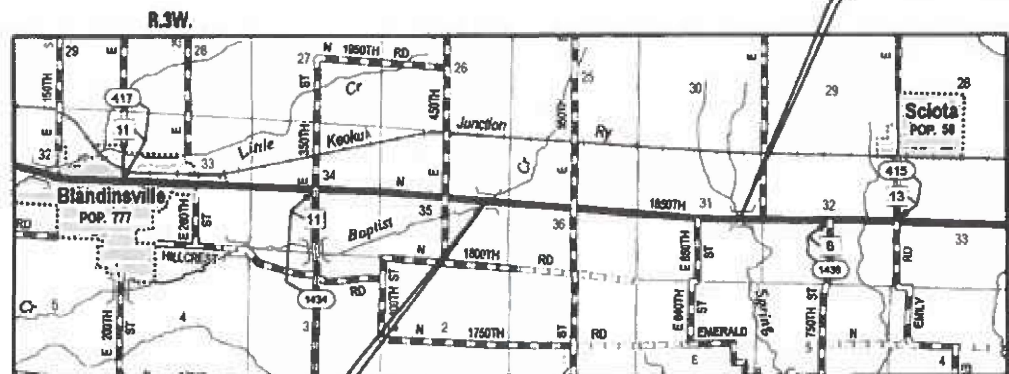
**CONTRACT NO. 68H25**

**PROPOSED  
HIGHWAY PLANS**

FAP ROUTE 685 (IL-9)  
SECTION [(119B) BR-1,2] BRR  
PROJECT HBFP-WGMD(758)  
BRIDGE PRESERVATION  
MCDONOUGH COUNTY

C-94-002-23

IL 9 OVER  
SPRING CREEK  
S.N. 055-0043



IL 9 OVER  
BAPTIST CREEK  
S.N. 055-0042

LOCATION MAP  
NOT TO SCALE

GROSS LENGTH = 1712 FT. = 0.32 MILE  
NET LENGTH = 1712 FT. = 0.32 MILE



*Samantha M. Soto* 12/14/23  
Samantha M. Soto P.E. # 062-088034 DAW  
LICENSE EXPIRES: NOVEMBER 30, 2025  
HURST-ROSCHE, INC.  
SHEET RANGE 1-20



**PROJECT DESCRIPTION:**  
WORK INCLUDES BRIDGE DECK AND APPROACH SCARIFICATION, MICROSILICA OVERLAY, JOINT REPLACEMENT, AND REPLACE ELASTOMERIC BRGS.

STATE OF ILLINOIS  
DEPARTMENT OF TRANSPORTATION

SUBMITTED December 15, 2023  
*Kensil J. Darneth, Inc.*  
REGIONAL ENGINEER

February 2, 2024 *S.E.A. Elk*  
ENGINEER OF DESIGN AND ENVIRONMENT

February 2, 2024 *Steph M. Soto*  
DIRECTOR OF HIGHWAYS PROJECT IMPLEMENTATION

**PRINTED BY THE AUTHORITY  
OF THE STATE OF ILLINOIS**



**SUMMARY OF QUANTITIES**

CODE NO.	ITEM	UNIT	TOTAL QUANTITY	CONSTRUCTION CODE	
				80% FED 20% STATE	80% FED 20% STATE
				BR DGE 0047	BR DGE 0047
				055-0042	055-0043
40600295	POLYMERIZED BITUMINOUS MATERIALS (TACK COAT)	POUND	474	242	232
40600982	HOT-MIX ASPHALT SURFACE REMOVAL - BUTT JOINT	SQ YD	696	356	340
40600990	TEMPORARY RAMP	SQ YD	164	82	82
40604050	HOT-MIX ASPHALT SURFACE COURSE, IL-9.5, MIX "C", N50	TON	60	30	30
48203100	HOT-MIX ASPHALT SHOULDERS	TON	32	16	16
50102400	CONCRETE REMOVAL	CJ YD	17.5	17.5	
50300255	CONCRETE SUPERSTRUCTURE	CJ YD	17.5	17.5	
50300260	BRIDGE DECK GROOVING	SQ YD	822	442	380
50300300	PROTECTIVE COAT	SQ YD	885	479	406
50500405	FURNISHING AND ERECTING STRUCTURAL STEEL	POUND	380	380	
50800205	REINFORCEMENT BARS, EPOXY COATED	POUND	1530	1530	
50800515	BAR SPLICERS	EACH	18	18	
52000110	PREFORMED JOINT STRIP SEAL	FOOT	93	93	
52100010	ELASTOMERIC BEARING ASSEMBLY, TYPE I	EACH	6	6	

MODEL: \\MODEL\MAMFE  
 FILE NAME: X:\03\31\Current\192-1063 IDOT-DA-W02-PTB206-30-1\Jobus\_Bridges\_Preservation\Drawings\5-DWG\5-004.dgn

USER NAME = HURST-ROSCHE	DESIGNED - KYH	REVISED -
	DRAWN - KYH	REVISED -
PLOT SCALE = 100,0000' / in.	CHECKED - SMS	REVISED -
PLOT DATE = 1/25/2024	DATE -	REVISED -

**STATE OF ILLINOIS  
DEPARTMENT OF TRANSPORTATION**

**SUMMARY OF QUANTITIES  
S.N. 055-0042 & S.N. 055-0043**

SCALE: SHEET 1 OF 3 SHEETS STA. TO STA.

F.A.P. RTE.	SECTION	COUNTY	TOTAL SHEETS	SHEET NO.
685	(119B) BR-1, BR-2	MCDONOUGH	31	3
			CONTRACT NO. 68H25	
ILLINOIS FED. AID PROJECT				

**SUMMARY OF QUANTITIES**

CODE NO.	ITEM	UNIT	TOTAL QUANTITY	CONSTRUCTION CODE	
				80% FED 20% STATE	80% FED 20% STATE
				BR DGE	BR DGE
				0047	0047
				055-0042	055-0043
52100510	ANCHOR BOLTS, 3/4"	EACH	12	12	
60260100	INLETS TO BE ADJUSTED	EACH	6	4	2
67000400	ENGINEER'S FIELD OFFICE, TYPE A	CAL MO	4	2	2
67100100	MOBILIZATION	L SUM	1	0.5	0.5
70100405	TRAFFIC CONTROL AND PROTECTION, STANDARD 701321	EACH	2	1	1
70100450	TRAFFIC CONTROL AND PROTECTION, STANDARD 701201	L SUM	1	0.5	0.5
70100460	TRAFFIC CONTROL AND PROTECTION, STANDARD 701306	L SUM	1	0.5	0.5
70106500	TEMPORARY BRIDGE TRAFFIC SIGNALS	EACH	2	1	1
70106700	TEMPORARY RUMBLE STRIPS	EACH	12	6	6
70107005	PAVEMENT MARKING BLACKOUT TAPE, 5"	FOOT	3902	1956	1946
70107025	CHANGEABLE MESSAGE SIGN	CAL DA	28	14	14
70300100	SHORT TERM PAVEMENT MARKING	FOOT	44	23	21
70300150	SHORT TERM PAVEMENT MARKING REMOVAL	SQ FT	2206	1121	1085
70307120	TEMPORARY PAVEMENT MARKING - LINE 4" - TYPE IV TAPE	FOOT	1697	895	802

MODEL: \\MODEL\MHMF  
 FILE NAME: X:\03\31\Current\192-1063 IDOT DA W02 P7B206-30 Various Bridges\_Presentation\DCM\68H25\0468H25-sht3-SOC.dgn

USER NAME = HURST-ROSCHE	DESIGNED -	REVISED -
PLOT SCALE = 100,0000' / in.	DRAWN -	REVISED -
PLOT DATE = 12/15/2023	CHECKED -	REVISED -
	DATE -	REVISED -

**STATE OF ILLINOIS  
DEPARTMENT OF TRANSPORTATION**

**SUMMARY OF QUANTITIES  
S.N. 055-0042 & S.N. 055-0043**

SCALE: SHEET 2 OF 3 SHEETS STA. TO STA.

F.A.P. RTE.	SECTION	COUNTY	TOTAL SHEETS	SHEET NO.
685	(119B) BR-1, BR-2	MCDONOUGH	31	4
			CONTRACT NO. 68H25	
		ILLINOIS	FED. AID PROJECT	

**SUMMARY OF QUANTITIES**

CODE NO.	ITEM	UNIT	TOTAL QUANTITY	CONSTRUCTION CODE	
				80% FED 20% STATE	80% FED 20% STATE
				BR DGE	BR DGE
				0047	0047
				055-0042	055-0043
70400100	TEMPORARY CONCRETE BARRIER	FOOT	900	462.5	437.5
70400200	RELOCATE TEMPORARY CONCRETE BARRIER	FOOT	900	462.5	437.5
70600251	IMPACT ATTENUATORS, TEMPORARY (NON- REDIRECTIVE, NARROW), TEST LEVEL 3	EACH	4	2	2
70600352	IMPACT ATTENUATORS, RELOCATE (NON- REDIRECTIVE, NARROW), TEST LEVEL 3	EACH	4	2	2
* 78009004	MODIFIED URETHANE PAVEMENT MARKING - LINE 4"	FOOT	1697	895	802
Z0001899	JACK AND REMOVE EXISTING BEARINGS	EACH	6	6	
Z0012130	BRIDGE DECK SCARIFICATION 3/4"	SQ YD	878	472	406
Z0012162	BRIDGE DECK MICROSILICA CONCRETE OVERLAY 2 1/4"	SQ YD	878	472	406
Z0012500	CONCRETE CURB REPAIR	FOOT	18	12	6
∅ Z0076600	TRAINEES	HOUR	1,000	1,000	
Z0013798	CONSTRUCTION LAYOUT	L SUM	1	0.5	0.5
∅ Z0076604	TRAINEES - TRAINING PROGRAM GRADUATE	HOUR	1,000	1,000	
Z0018051	DRAINAGE SCUPPERS TO BE ADJUSTED	EACH	2	2	

∅ 0042 \*= SPECIALTY ITEM

MODEL: I:\MODEL\MHMF  
FILE NAME: X:\03\31\Current\192-1063 IDOT.D4.W02.PT2\206-20\_Various Bridges\_Presentation\DH\68H25.DWG\BHP5-int3-SOC.dgn

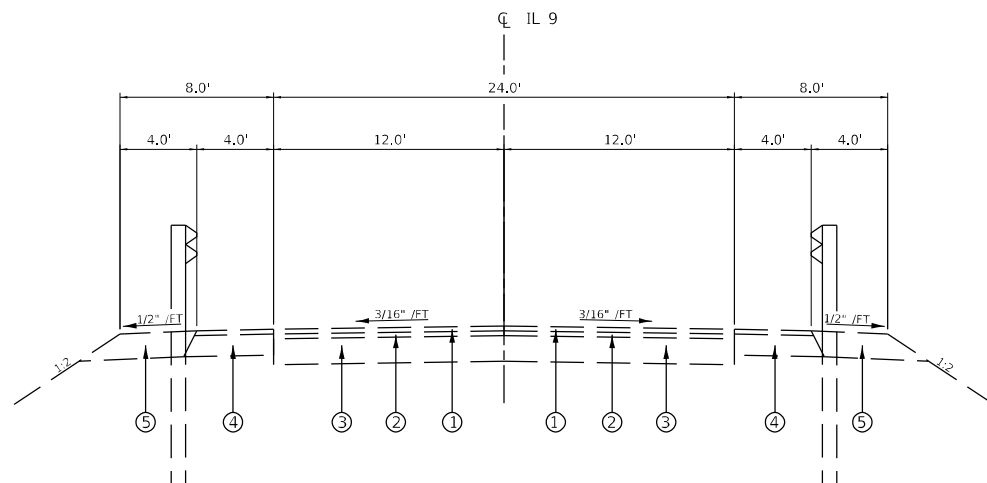
USER NAME = HURST-ROSCHE	DESIGNED -	REVISED -
	DRAWN -	REVISED -
PLOT SCALE = 100,0000' / in.	CHECKED -	REVISED -
PLOT DATE = 12/15/2023	DATE -	REVISED -

**STATE OF ILLINOIS  
DEPARTMENT OF TRANSPORTATION**

**SUMMARY OF QUANTITIES  
S.N. 055-0042 & S.N. 055-0043**

SCALE: SHEET 3 OF 3 SHEETS STA. TO STA.

F.A.P. RTE.	SECTION	COUNTY	TOTAL SHEETS	SHEET NO.
685	(119B) BR-1, BR-2	MCDONOUGH	31	5
			CONTRACT NO. 68H25	
		ILLINOIS	FED. AID PROJECT	

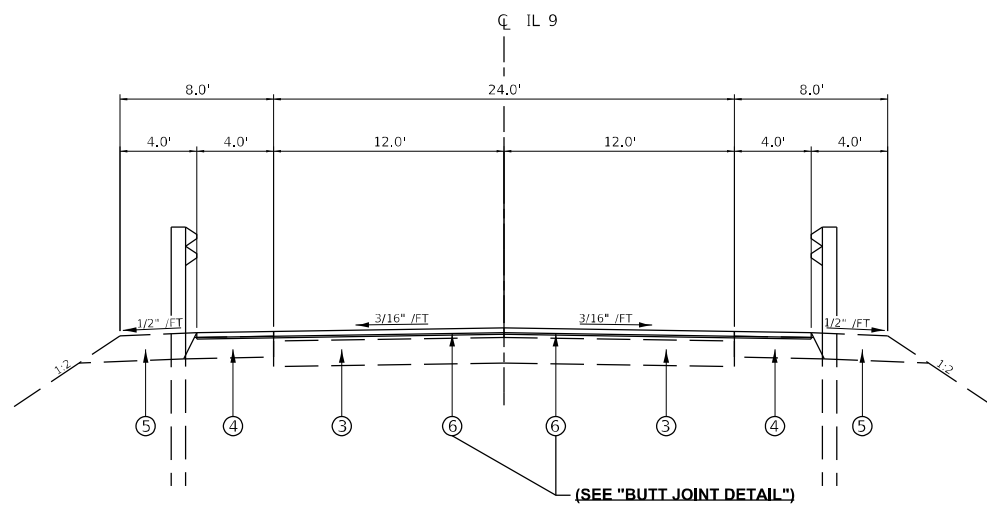


**EXISTING TYPICAL SECTION**

STA. 148+21.27 TO STA. 148+80.82  
 STA. 149+85.20 TO STA. 150+44.82  
 STA. 252+92.15 TO STA. 253+47.60  
 STA. 254+37.14 TO STA. 254+92.60

**LEGEND**

- ① EXISTING BITUMINOUS SURFACE
- ② EXISTING BITUMINOUS BINDER
- ③ EXISTING PCC PAVEMENT BASE COURSE
- ④ EXISTING BITUMINOUS BASE COURSE
- ⑤ EXISTING AGGREGATE SHOULDER
- ⑥ HOT-MIX ASPHALT SURFACE COURSE, IL-9.0, N50  
 HOT-MIX ASPHALT SURFACE REMOVAL - BUTT JOINT  
 BITUMINOUS MATERIALS (TACK COAT)



**PROPOSED TYPICAL SECTION**

STA. 148+21.27 TO STA. 148+80.82  
 STA. 149+85.20 TO STA. 150+44.82  
 STA. 252+92.15 TO STA. 253+47.60  
 STA. 254+37.14 TO STA. 254+92.60

(SEE "BUTT JOINT DETAIL")

MODEL: \\MODEL\MHMF  
 FILE NAME: X:\03\31\Current\192-1063 IDOT D4 W02 P1B206-30 Various Bridges Preservation\DCM68H25.DWG\B1P5-sh16-Typical Sections.dwg

USER NAME = HURST-ROSCHE	DESIGNED -	REVISED -
	DRAWN -	REVISED -
PLOT SCALE = 10,0000 * / in.	CHECKED -	REVISED -
PLOT DATE = 12/14/2023	DATE -	REVISED -

**STATE OF ILLINOIS  
 DEPARTMENT OF TRANSPORTATION**

**TYPICAL SECTION  
 S.N. 055-0042 & S.N. 055-0043**

SCALE: SHEET 1 OF 1 SHEETS STA. TO STA.

F.A.P. RTE.	SECTION	COUNTY	TOTAL SHEETS	SHEET NO.
685	[(119B) BR-1, 2] BRR	MCDONOUGH	31	6
			CONTRACT NO. 68H25	
ILLINOIS FED. AID PROJECT				

**SCHEDULE OF QUANTITIES**

RESURFACING SCHEDULE										
LOCATION					40600295 POLYMERIZED BITUMINOUS MATERIALS (TACK COAT)	40600982 HOT-MIX ASPHALT SURFACE REMOVAL - BUTT JOINT	40600990 TEMPORARY RAMP	40604050 HOT-MIX ASPHALT SURFACE COURSE, IL-9.5, MIX "C", N50	48203100 HOT-MIX ASPHALT SHOULDERS	
IL 9					POUND	SQ YD	SQ YD	TON	TON	
S.N. 055-0042 MAINLINE										
STA.	148+21.27	TO	STA.	148+75.89	RT/LT	80	118	27	15	
STA.	149+90.13	TO	STA.	150+44.82	RT/LT	80	118	27	15	
S.N. 055-0042 SHOULDER										
STA.	148+21.27	TO	STA.	148+80.82	LT	26	38	7		5
STA.	148+21.27	TO	STA.	148+56.20	RT	15	22	7		3
STA.	150+09.88	TO	STA.	150+44.82	LT	15	22	7		3
STA.	149+85.20	TO	STA.	150+44.82	RT	26	38	7		5
S.N. 055-0043 MAINLINE										
STA.	252+92.15	TO	STA.	253+43.36	RT/LT	77	113	27	15	
STA.	254+41.39	TO	STA.	254+92.60	RT/LT	77	113	27	15	
S.N. 055-0043 SHOULDER										
STA.	252+92.15	TO	STA.	253+26.39	LT	15	22	7		3
STA.	252+92.15	TO	STA.	253+47.60	RT	24	35	7		5
STA.	254+37.14	TO	STA.	254+92.60	LT	24	35	7		5
STA.	254+58.36	TO	STA.	254+92.60	RT	15	22	7		3
S.N. 055-0042 SUBTOTALS					242	356	82	30	16	
S.N. 055-0043 SUBTOTALS					232	340	82	30	16	
<b>TOTALS</b>					<b>474</b>	<b>696</b>	<b>164</b>	<b>60</b>	<b>32</b>	

TEMPORARY BRIDGE TRAFFIC SIGNALS	
LOCATION	EACH
S.N. 055-0042	1
S.N. 055-0043	1
<b>TOTAL</b>	<b>2</b>

TEMPORARY RUMBLE STRIPS	
LOCATION	EACH
S.N. 055-0042	6
S.N. 055-0043	6
<b>TOTAL</b>	<b>12</b>

CHANGEABLE MESSAGE SIGN	
LOCATION	CAL DA
S.N. 055-0042	14
S.N. 055-0043	14
<b>TOTAL</b>	<b>28</b>

TEMPORARY CONCRETE BARRIER SCHEDULE										
LOCATION					70100100 TEMPORARY CONCRETE BARRIER	70400200 RELOCATE TEMPORARY CONCRETE BARRIER	70600251 IMPACT ATTENUATORS, TEMPORARY (NON-REDIRECTIVE,	70600250 IMPACT ATTENUATORS, RELOCATE (NON-REDIRECTIVE,		
IL 9					FOOT	FOOT	EACH	EACH		
S.N. 055-0042										
STAGE I										
STA.	147+06.27	TO	STA.	151+59.82	LT/RT	462.5				
STA.	147+06.27							1		
STA.	151+59.82							1		
STAGE II										
STA.	147+06.27	TO	STA.	151+59.82	LT/RT		462.5			
STA.	147+06.27								1	
STA.	151+59.82								1	
S.N. 055-0043										
STAGE I										
STA.	251+77.15	TO	STA.	256+07.60	LT/RT	437.5				
STA.	251+77.15							1		
STA.	256+07.60							1		
STAGE II										
STA.	251+77.15	TO	STA.	256+07.60	LT/RT		437.5			
STA.	251+77.15								1	
STA.	256+07.60								1	
S.N. 055-0042 SUBTOTALS					462.5	462.5	2	2		
S.N. 055-0043 SUBTOTALS					437.5	437.5	2	2		
<b>TOTALS</b>					<b>900</b>	<b>900</b>	<b>4</b>	<b>4</b>		

MODEL: \\MODEL\NAMES  
 FILE NAME: X:\055\Current\192-1063 IDOT DA W02 P1B206-20\_Various Bridges\_Presentation\068H25.DWG\B1P5-ent7-Schedule.dgn

USER NAME = HURST-ROSCHE	DESIGNED -	REVISED -
	DRAWN -	REVISED -
PLOT SCALE = 100,0000' / in.	CHECKED -	REVISED -
PLOT DATE = 12/15/2023	DATE -	REVISED -

**STATE OF ILLINOIS  
DEPARTMENT OF TRANSPORTATION**

**SCHEDULE OF QUANTITIES  
S.N. 055-0042 & S.N. 055-0043**

SCALE: SHEET 1 OF 2 SHEETS STA. TO STA.

F.A.P. RTE.	SECTION	COUNTY	TOTAL SHEETS	SHEET NO.
685	(119B) BR-1, BR-2	MCDONOUGH	31	7
				CONTRACT NO. 68H25
		ILLINOIS	FED. AID PROJECT	

**SCHEDULE OF QUANTITIES**

PAVEMENT MARKING SCHEDULE										
LOCATION					70107005 PAVEMENT MARKING BLACKOUT TAPE, 5"	70300100 SHORT TERM PAVEMENT MARKING	70300150 SHORT TERM PAVEMENT MARKING REMOVAL	70307120 TEMPORARY PAVEMENT MARKING - LINE 4" - TYPE IV TAPE	78009004 MODIFIED URETHANE PAVEMENT MARKING - LINE 4"	
IL 9		TYPE		EDGE/CL	LT/RT	FOOT	FOOT	SQ FT	FOOT	FOOT
<b>S.N. 055-0042</b>										
STAGE I										
STA.	145+26.27	TO	STA.	145+56.99	LT SKIP/RT SOLID YELLOW	C/L		38.4		16.0
STA.	145+56.99	TO	STA.	148+21.27	SOLID DOUBLE YELLOW	C/L		528.6		220.3
STA.	150+44.82	TO	STA.	153+45.82	SOLID DOUBLE YELLOW	C/L		602.0		250.9
STA.	146+79.40	TO	STA.	151+85.10	SOLID WHITE	EDGE	LT	505.8		210.8
STAGE II										
STA.	146+82.13	TO	STA.	148+21.27	SOLID WHITE	EDGE	RT	139.2		58.0
STA.	150+44.82	TO	STA.	151+86.67	SOLID WHITE	EDGE	RT	141.9		59.2
POST-STAGE II										
STA.	148+21.27	TO	STA.	150+44.82	SKIP DASH YELLOW	C/L			22.4	7.5
STA.	148+21.27	TO	STA.	150+44.82	SOLID WHITE	EDGE	LT			74.6
STA.	148+21.27	TO	STA.	150+44.82	SOLID WHITE	EDGE	RT			74.6
STA.	148+21.27	TO	STA.	150+44.82	SOLID DOUBLE YELLOW	C/L				149.1
<b>S.N. 055-0043</b>										
STAGE I										
STA.	249+97.15	TO	STA.	252+92.15	SOLID DOUBLE YELLOW	C/L		590.1		245.9
STA.	254+92.60	TO	STA.	257+93.60	SOLID DOUBLE YELLOW	C/L		602.0		250.9
STA.	251+50.26	TO	STA.	256+20.48	SOLID WHITE	EDGE	LT	470.3		196.0
STAGE II										
STA.	251+51.85	TO	STA.	252+92.15	SOLID WHITE	EDGE	RT	140.4		58.5
STA.	254+92.60	TO	STA.	256+34.81	SOLID WHITE	EDGE	RT	142.3		59.3
POST-STAGE II										
STA.	252+92.15	TO	STA.	254+92.60	SKIP DASH YELLOW	C/L			20.1	6.7
STA.	252+92.15	TO	STA.	254+92.60	SOLID WHITE	EDGE	LT			66.9
STA.	252+92.15	TO	STA.	254+92.60	SOLID WHITE	EDGE	RT			66.9
STA.	252+92.15	TO	STA.	254+92.60	SOLID DOUBLE YELLOW	C/L				133.7
S.N. 055-0042 SUBTOTALS								1956	23	1121
S.N. 055-0043 SUBTOTALS								1946	21	1085
<b>TOTALS</b>								<b>3902</b>	<b>44</b>	<b>2206</b>

MODEL: \\MODEL\MHMF  
FILE: \\MAILS\X:\0303\Current\192-1063 IDOT DA W02 P7B206-20\_Various Bridges\_Preservation\Doc\68H25\0468H25-ent7-Schedule.dgn

USER NAME = HURST-ROSCHE	DESIGNED -	REVISED -
	DRAWN -	REVISED -
PLOT SCALE = 100,0000' / in.	CHECKED -	REVISED -
PLOT DATE = 12/15/2023	DATE -	REVISED -

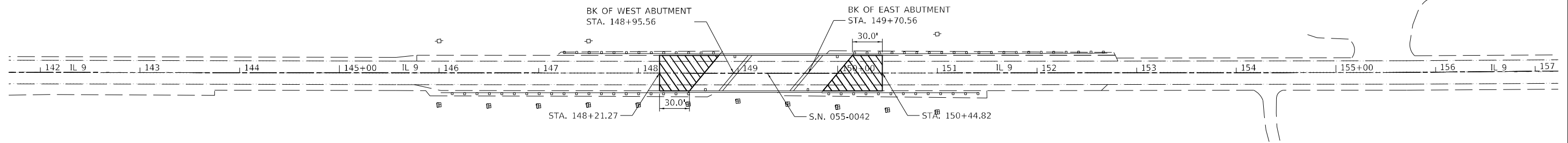
**STATE OF ILLINOIS  
DEPARTMENT OF TRANSPORTATION**

**SCHEDULE OF QUANTITIES  
S.N. 055-0042 & S.N. 055-0043**

SCALE: SHEET 2 OF 2 SHEETS STA. TO STA.

F.A.P. RTE.	SECTION	COUNTY	TOTAL SHEETS	SHEET NO.
685	(119B) BR-1, BR-2	MCDONOUGH	31	8
CONTRACT NO. 68H25			ILLINOIS FED. AID PROJECT	





**LEGEND**

 BUTT JOINT REMOVAL - SEE BUTT JOINT DETAILS

MODEL: \\MODEL\MNMF5  
 FILE NAME: X:\03\03\Current\192-1063 IDOT DA W02 P1B206-30 Various Bridges Preservation\DCM68H25\0468H25-sht10-Removal\_1.dgn

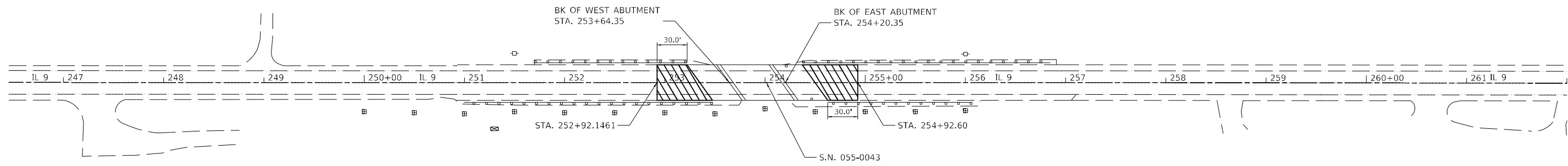
USER NAME = HURST-ROSCHE	DESIGNED -	REVISED -
	DRAWN -	REVISED -
PLOT SCALE = 100,0000 ' / in.	CHECKED -	REVISED -
PLOT DATE = 12/14/2023	DATE -	REVISED -

**STATE OF ILLINOIS**  
**DEPARTMENT OF TRANSPORTATION**

**REMOVAL PLAN**  
**S.N. 055-0042**

SCALE: 1" = 50'    SHEET 1    OF 2    SHEETS    STA.    TO STA.

F.A.P. RTE.	SECTION	COUNTY	TOTAL SHEETS	SHEET NO.
685	[(119B) BR-1, 2] BRR	MCDONOUGH	31	9
CONTRACT NO. 68H25			ILLINOIS FED. AID PROJECT	



**LEGEND**

BUTT JOINT REMOVAL - SEE BUTT JOINT DETAILS

MODEL: \\MODEL\MNMF5  
 FILE NAME: X:\03\03\Current\192-1063 IDOT D4 W02 P1B206-20\_Vadbus Bridges\_Preservation\DCM\68H25\0468H25-sht10-Removal 2.dwg

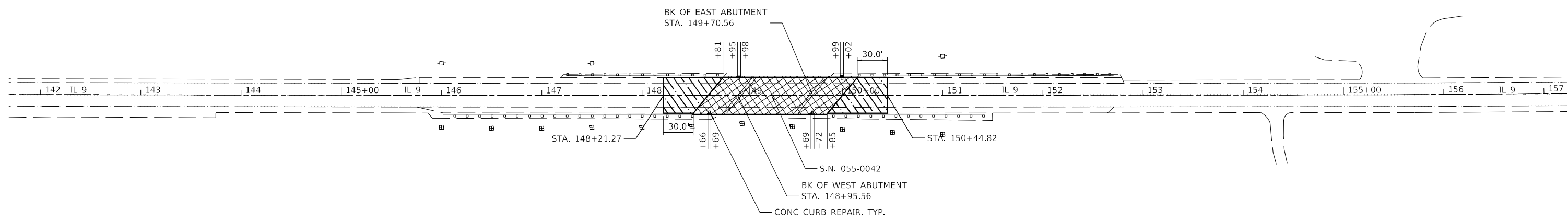
USER NAME = HURST-ROSCHE	DESIGNED -	REVISED -
	DRAWN -	REVISED -
PLOT SCALE = 100,0000' / in.	CHECKED -	REVISED -
PLOT DATE = 12/14/2023	DATE -	REVISED -

**STATE OF ILLINOIS  
DEPARTMENT OF TRANSPORTATION**

**REMOVAL PLAN  
S.N. 055-0043**

SCALE: 1" = 50'    SHEET 2    OF 2    SHEETS    STA.    TO STA.

F.A.P. RTE.	SECTION	COUNTY	TOTAL SHEETS	SHEET NO.
685	[(119B) BR-1, 2] BRR	MCDONOUGH	31	10
CONTRACT NO. 68H25				
ILLINOIS FED. AID PROJECT				



**LEGEND**

- PROPOSED BRIDGE DECK SCARIFICATION 3/4"  
BRIDGE DECK MICROSILICA CONCRETE OVERLAY 2 1/4"
- HMA PAVEMENT - SEE BUTT JOINT DETAILS

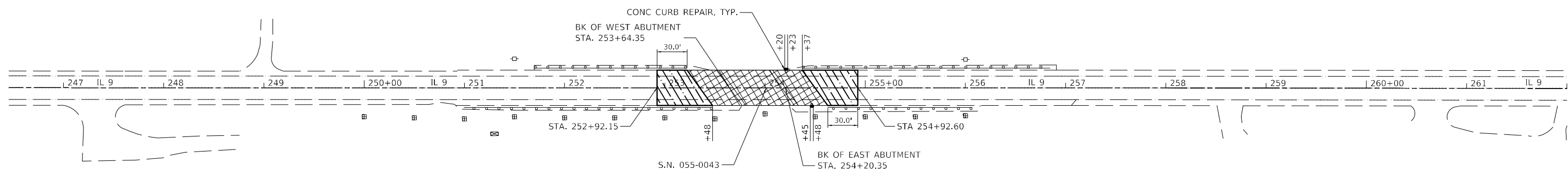
MODEL: \\MODEL\MHMF5  
 FILE NAME: X:\03\03\Current\192-1063 IDOT D4 W02 P1B206-30 Various Bridges Preservation\DCM\68H25\68H25-sht11-Design\_1.dgn

USER NAME = HURST-ROSCHE	DESIGNED -	REVISED -
	DRAWN -	REVISED -
PLOT SCALE = 100,0000' / in.	CHECKED -	REVISED -
PLOT DATE = 12/14/2023	DATE -	REVISED -

**STATE OF ILLINOIS  
DEPARTMENT OF TRANSPORTATION**

<b>PLAN</b>			
<b>S.N. 055-0042</b>			
SCALE: 1" = 50'	SHEET 1	OF 2 SHEETS	STA. TO STA.

F.A.P. RTE.	SECTION	COUNTY	TOTAL SHEETS	SHEET NO.
685	[(119B) BR-1, 2] BRR	MCDONOUGH	31	11
CONTRACT NO. 68H25			ILLINOIS FED. AID PROJECT	



**LEGEND**

- BRIDGE DECK SCARIFICATION 3/4"
- BRIDGE DECK MICROSILICA CONCRETE OVERLAY 2 1/4"
- HMA PAVEMENT - SEE BUTT JOINT DETAILS

MODEL: \\MODEL\MHMF  
 FILE NAME: X:\03\03\Current\192-1063 IDOT DA W02 P7B206-30 Various Bridges Preservation\DCM68H25\0468H25-sht12-Design\_2.dgn

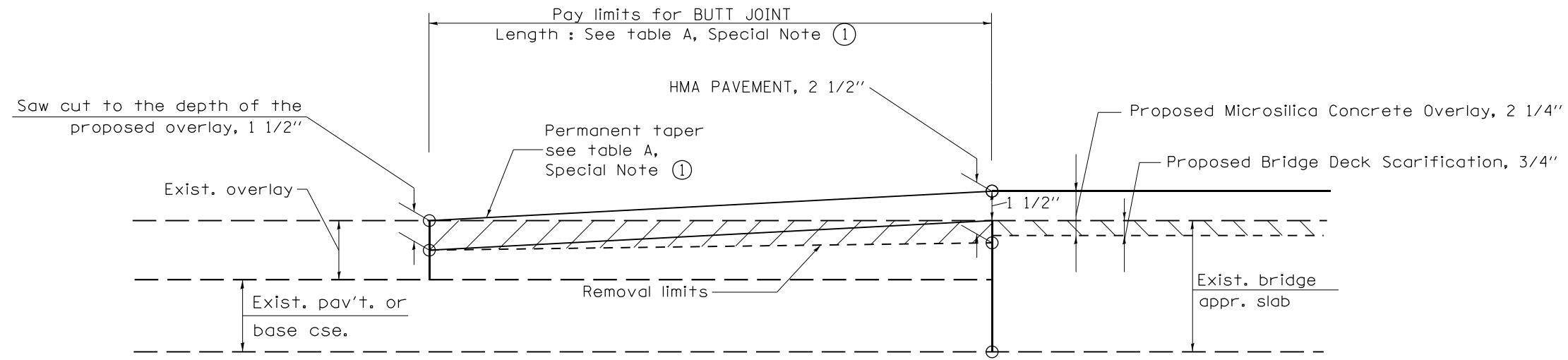
USER NAME = HURST-ROSCHE	DESIGNED -	REVISED -
	DRAWN -	REVISED -
PLOT SCALE = 100,0000' / in.	CHECKED -	REVISED -
PLOT DATE = 12/14/2023	DATE -	REVISED -

**STATE OF ILLINOIS**  
**DEPARTMENT OF TRANSPORTATION**

**PLAN**  
**S.N. 055-0043**

SCALE: 1" = 50'    SHEET 2    OF 2    SHEETS    STA.    TO STA.

F.A.P. RTE.	SECTION	COUNTY	TOTAL SHEETS	SHEET NO.
685	[(119B) BR-1, 2] BRR	MCDONOUGH	31	12
CONTRACT NO. 68H25				
ILLINOIS FED. AID PROJECT				



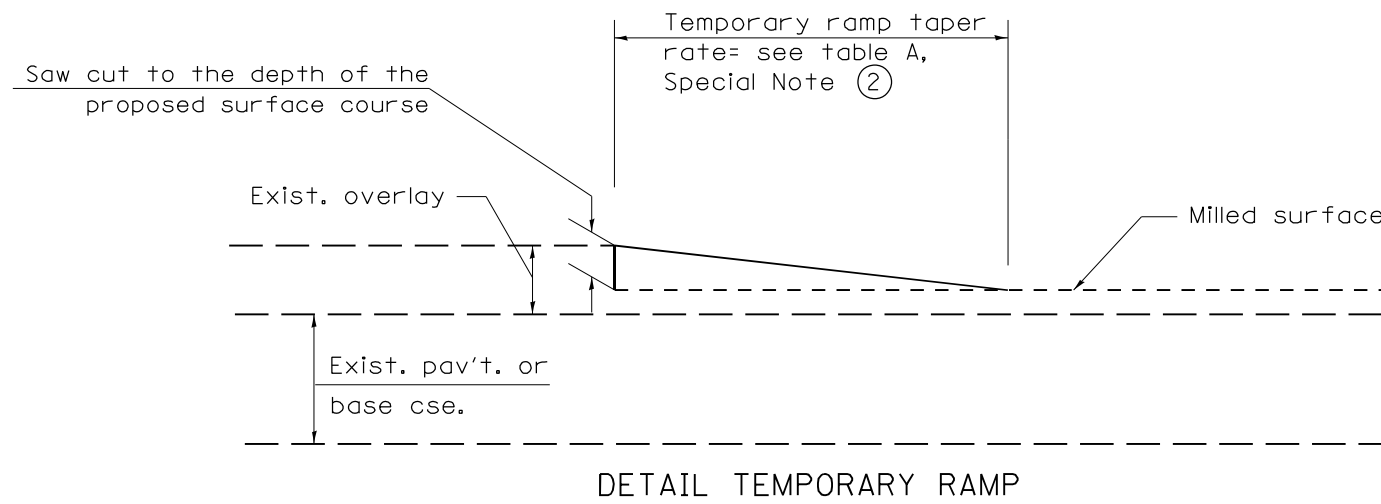
**CASE 1 : WITH HOT MIX ASPHALT SURFACE REMOVAL (COLD MILLING)**

**TABLE A  
TAPER RATES**

SPECIAL NOTE NUMBER	ELEMENT	MAINLINE INTERSTATES & 4-LANE EXPRESSWAYS	ALL OTHERS
①	BUTT JOINT TAPER RATE	1:480	1:240
②	TEMPORARY RAMP TAPER RATE	1:80	1:40

**GENERAL NOTES**

1. The work shall be done in accordance with Article 406.08.
2. The pavement surface to be removed may be either bituminous or P.C. concrete. The work shall be performed in accordance with Article 440.04.
3. The saw cut joints shall be primed just prior to the placing of bituminous material. The work will be in accordance with the applicable portions of Article 406.05.
4. The length of butt joint is based on the taper rate times change in cold milling depth within the butt joint pay limits, unless otherwise indicated.
5. Temporary ramps are paid for separately and not included in the cost of the butt joints.



**DETAIL TEMPORARY RAMP**

01-01-97	RENUM. C-23.01, NEW REVISION BOX	T.P.	08-21-13	MAJOR MODIFICATIONS	R.D.
04-01-97	CORRECTION TO DEPTH	J.A.	04-12-16	MINOR CORRECTIONS	R.D.
09-15-05	REVISED DESIGNER NOTE	M.M.A.	02-14-17	ADDED NOTE 5	R.D.
10-16-06	REVISED TO 2007 SPEC.	M.A.	07-16-19	Wordng and Spelling corrections	R.D.

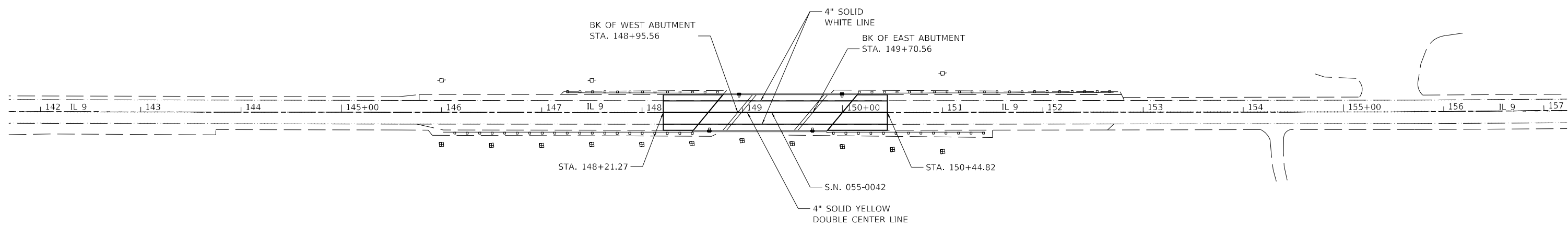
**STATE OF ILLINOIS  
DEPARTMENT OF TRANSPORTATION**

NOT TO SCALE

**BUTT JOINT DETAIL  
S.N. 055-0042 & S.N. 055-0043**

SHT. 1 OF 1  
CADD STD. 406101-D4

F.A.P. RTE.	SECTION	COUNTY	TOTAL SHEETS	SHEET NO.
685	[(119B) BR-1, 2] BRR	MCDONOUGH	31	13
FED. ROAD DIST. NO. ILLINOIS FED. AID PROJECT			CONTRACT NO. 68H25	



MODEL: \\MODEL\MAMFS  
 FILE NAME: X:\03\03\Current\192-1063 IDOT D4 W02 P1B206-30 Various Bridges Preservation\DCM68H25\0468H25-sh114-PMK\_L.dgn

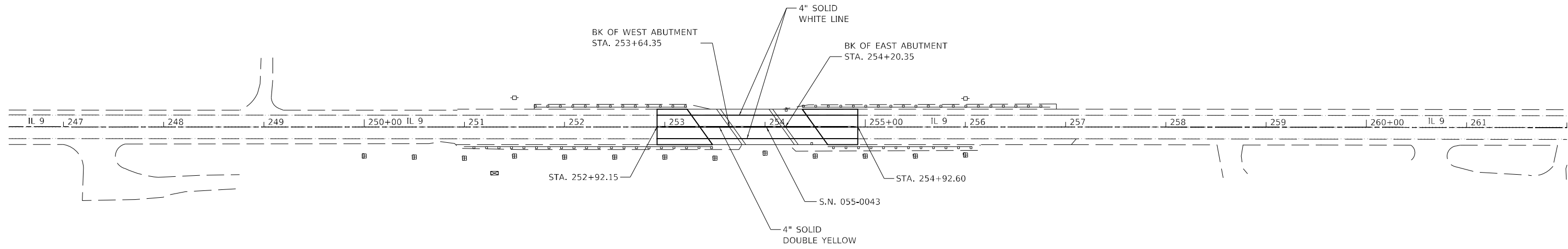
USER NAME = HURST-ROSCHE	DESIGNED -	REVISED -
	DRAWN -	REVISED -
PLOT SCALE = 100,0000' / in.	CHECKED -	REVISED -
PLOT DATE = 12/14/2023	DATE -	REVISED -

**STATE OF ILLINOIS**  
**DEPARTMENT OF TRANSPORTATION**

**PAVEMENT MARKING PLAN**  
**S.N. 055-0042**

SCALE: 1" = 50'    SHEET 1 OF 2 SHEETS    STA.    TO STA.

F.A.P. RTE.	SECTION	COUNTY	TOTAL SHEETS	SHEET NO.
685	[(119B) BR-1, 2] BRR	MCDONOUGH	31	14
CONTRACT NO. 68H25				
ILLINOIS FED. AID PROJECT				



MODEL: \\MODEL\MNMF5  
 FILE NAME: X:\03\31\Current\192-1063 IDOT DA W02 P1B206-30 Various Bridges Preservation\DCM68H25\0468H25-sh115-RMK\_2.dgn

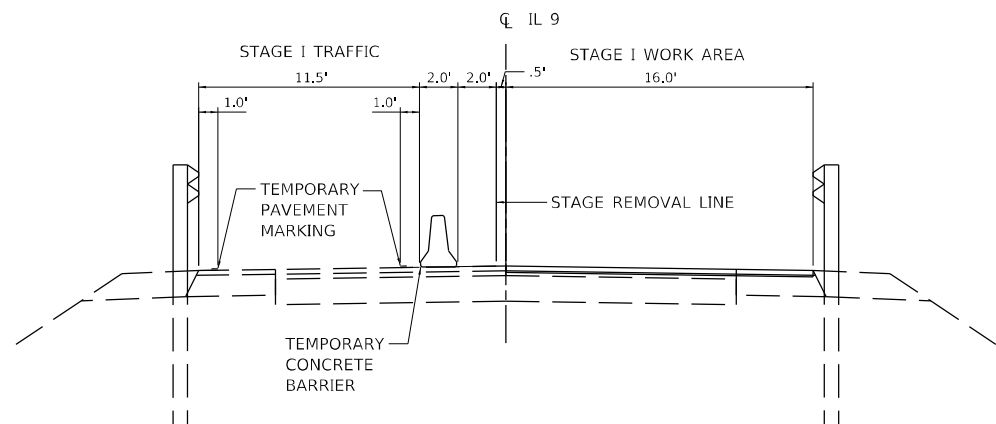
USER NAME = HURST-ROSCHE	DESIGNED -	REVISED -
	DRAWN -	REVISED -
PLOT SCALE = 100,0000' / in.	CHECKED -	REVISED -
PLOT DATE = 12/14/2023	DATE -	REVISED -

**STATE OF ILLINOIS**  
**DEPARTMENT OF TRANSPORTATION**

**PAVEMENT MARKING SHEETS**  
**S.N. 055-0043**

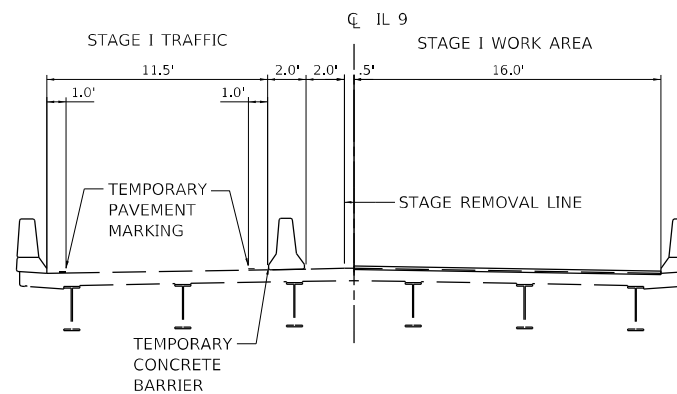
SCALE: 1" = 50'    SHEET 2    OF 2    SHEETS    STA.    TO STA.

F.A.P. RTE.	SECTION	COUNTY	TOTAL SHEETS	SHEET NO.
685	[(119B) BR-1, 2] BRR		31	15
CONTRACT NO. 68H25				
ILLINOIS FED. AID PROJECT				



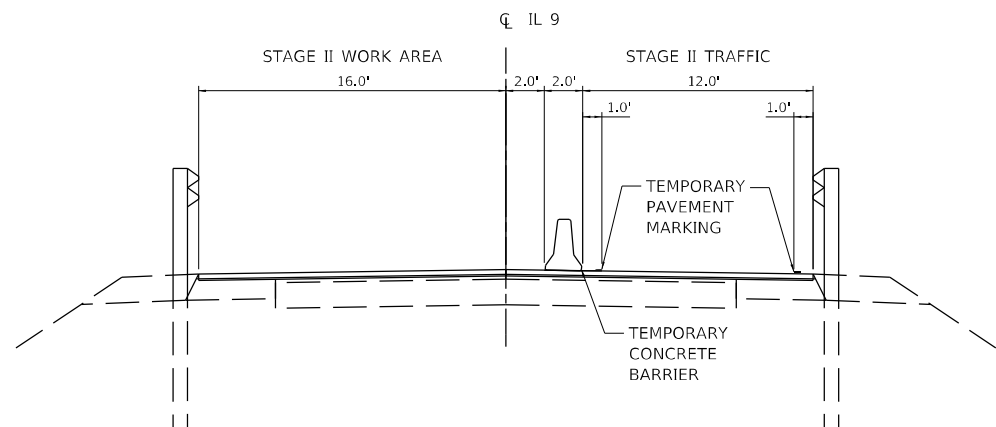
**STAGE I TYPICAL SECTION**

(LOOKING EAST)  
 STA. 148+21.27 TO STA. 148+80.82  
 STA. 149+85.20 TO STA. 150+44.82  
 STA. 252+92.15 TO STA. 253+47.60  
 STA. 254+37.14 TO STA. 254+92.60



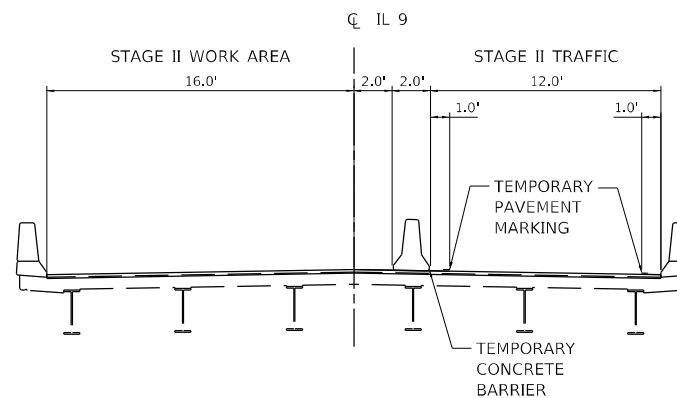
**STAGE I TYPICAL SECTION**

(LOOKING EAST)  
 S.N. 055-0042  
 S.N. 055-0043



**STAGE II TYPICAL SECTION**

(LOOKING EAST)  
 STA. 148+21.27 TO STA. 148+80.82  
 STA. 149+85.20 TO STA. 150+44.82  
 STA. 252+92.15 TO STA. 253+47.60  
 STA. 254+37.14 TO STA. 254+92.60



**STAGE II TYPICAL SECTION**

(LOOKING EAST)  
 S.N. 055-0042  
 S.N. 055-0043

**STAGE CONSTRUCTION NOTES**

**STAGE I TRAFFIC**  
 CLOSE EASTBOUND LANE TRANSITIONING EASTBOUND AND WESTBOUND TRAFFIC INTO THE WESTBOUND LANE AND SHOULDER USING HIGHWAY STANDARD 701321 AND AS DETAILED IN THE MAINTENANCE OF TRAFFIC STAGE I TYPICAL SECTION AND PLANS.

**STAGE I CONSTRUCTION**  
 MILL PAVEMENT, BRIDGE DECK AND APPROACH SLAB AS REQUIRED AND CONSTRUCT EASTBOUND PAVEMENT, AND STRUCTURE REPAIRS.

**STAGE II TRAFFIC**  
 CLOSE WESTBOUND LANE TRANSITIONING EASTBOUND AND WESTBOUND TRAFFIC INTO THE EASTBOUND LANE AND SHOULDER USING HIGHWAY STANDARD 701321 AND AS DETAILED IN THE MAINTENANCE OF TRAFFIC STAGE II TYPICAL SECTION AND PLANS.

**STAGE II CONSTRUCTION**  
 MILL PAVEMENT, BRIDGE DECK AND APPROACH SLAB AS REQUIRED AND CONSTRUCT EASTBOUND PAVEMENT, AND STRUCTURE REPAIRS.

**POST-STAGE TRAFFIC**  
 USE HIGHWAY STANDARD 701311 FOR TRAFFIC CONTROL.

**POST-STAGE CONSTRUCTION**  
 CONDUCT WORKSITE CLEANUP AND PLACE FINAL PAVEMENT MARKINGS. IN THE CASE THE PERMANENT FINAL PAVEMENT MARKING CANNOT BE PLACED, A QUANTITY OF TEMPORARY PAVEMENT MARKING IN THE QUANTITY OF THE PERMANENT PAVEMENT MARKING HAS BEEN ADDED TO THE CONTRACT.

**GENERAL STAGING NOTES**  
 USE HIGHWAY STANDARD 701321 FOR SUPPLEMENTAL STAGING DETAILS SUCH AS SIGNING.

TEMPORARY RUMBLE STRIPS SHALL BE USED ON BOTH SIDES OF EACH STRUCTURE AND TRAFFIC TO ALTERNATE IN THE SAME LANE DIRECTED BY THE TRAFFIC SIGNALS PER STANDARD 701321.

STAGING DETAILS ARE SUBJECT TO CHANGE DUE TO EXISTING FIELD CONDITIONS.

MODEL: \\MODEL\MHMF  
 FILE NAME: X:\03\03\Current\192-1063 IDOT-DA-W02-PTB206-20-Variab Bridges- Preservation\03\192-1063\16-Staging\_Typical Sections.dgn

USER NAME = HURST-ROSCHE	DESIGNED -	REVISED -
DRAWN -	REVISOR -	
PLOT SCALE = 10,0000 * / in.	CHECKED -	REVISED -
PLOT DATE = 12/14/2023	DATE -	REVISED -

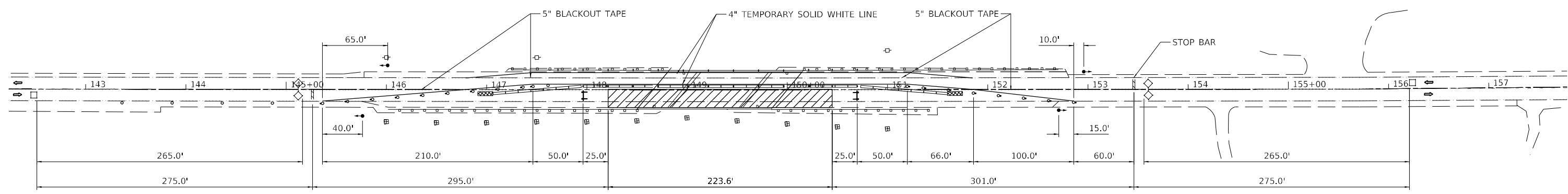
**STATE OF ILLINOIS  
 DEPARTMENT OF TRANSPORTATION**

**MAINTENANCE OF TRAFFIC STAGING TYPICAL SECTIONS  
 S.N. 055-0042 & S.N. 055-0043**

SCALE: 1" = 5' SHEET 1 OF 1 SHEETS STA. TO STA.

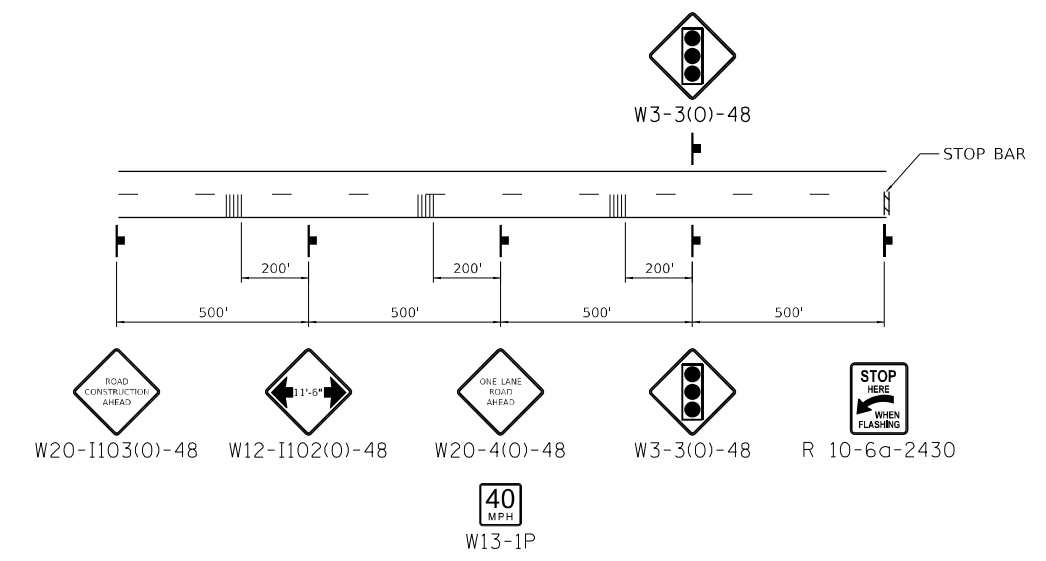
F.A.P. RTE.	SECTION	COUNTY	TOTAL SHEETS	SHEET NO.
685	[(119B) BR-1.2] BRR	MCDONOUGH	31	16
				CONTRACT NO. 68H25
ILLINOIS FED. AID PROJECT				





**LEGEND**

- WORK AREA
- IMPACT ATTENUATOR
- TEMPORARY CONCRETE BARRIER
- SIGN
- DETECTOR LOOP
- TYPE III BARRICADE WITH FLASHING LIGHTS
- DRUM WITH STEADY BURN BI-DIRECTIONAL LIGHT
- DRUM
- TRAFFIC SIGNAL
- TEMPORARY RUMBLE STRIPS
- CRYSTAL, BIDIRECTIONAL GUARDRAIL WALL REFLECTOR



**ADVANCE SIGNING IL 9**

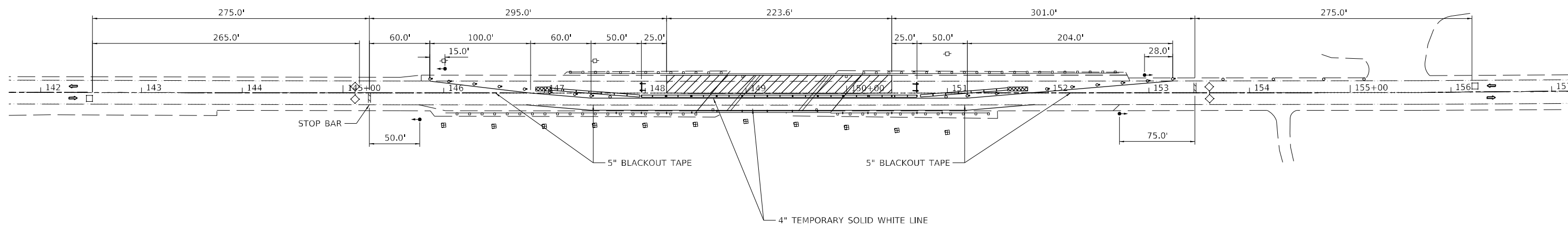
MODEL: \\MODEL\MHMF  
 FILE NAME: X:\03\31\Current\192-1063 IDOT D4 W02 P1B206-30 Various Bridges Preservation\DCM68H25\0468H25-sh17-5.dgn

USER NAME = HURST-ROSCHE	DESIGNED -	REVISED -
PLOT SCALE = 100,0000' / in.	CHECKED -	REVISED -
PLOT DATE = 12/14/2023	DATE -	REVISED -



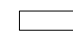

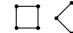






**STATE OF ILLINOIS**  
**DEPARTMENT OF TRANSPORTATION**

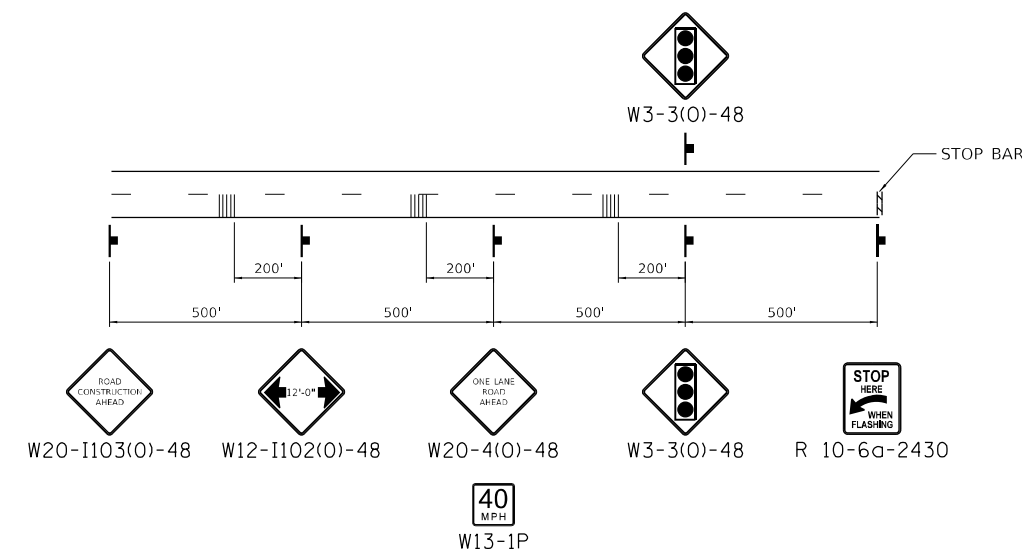
<b>MAINTENANCE OF TRAFFIC STAGE I PLANS</b> <b>S.N. 055-0042</b>			
SCALE: 1" = 50'	SHEET 1	OF 4 SHEETS	STA. TO STA.

F.A.P. RTE.	SECTION	COUNTY	TOTAL SHEETS	SHEET NO.
685	[(119B) BR-1, 2] BRR	MCDONOUGH	31	17
CONTRACT NO. 68H25			ILLINOIS FED. AID PROJECT	



**LEGEND**

-  WORK AREA
-  IMPACT ATTENUATOR
-  TEMPORARY CONCRETE BARRIER
-  SIGN
-  DETECTOR LOOP
-  TYPE III BARRICADE WITH FLASHING LIGHTS
-  DRUM WITH STEADY BURN BI-DIRECTIONAL LIGHT
-  DRUM
-  TRAFFIC SIGNAL
-  TEMPORARY RUMBLE STRIPS
-  CRYSTAL, BIDIRECTIONAL GUARDRAIL WALL REFLECTOR



**ADVANCE SIGNING IL 9**

MODEL: \\MODEL\MHMF  
 FILE NAME: X:\03\68H25\Current\192-1063 IDOT D4 W02 P1B206-20 Various Bridges Preservation\03\68H25\192-1063\18-Stage\18-Stage\_2.dgn

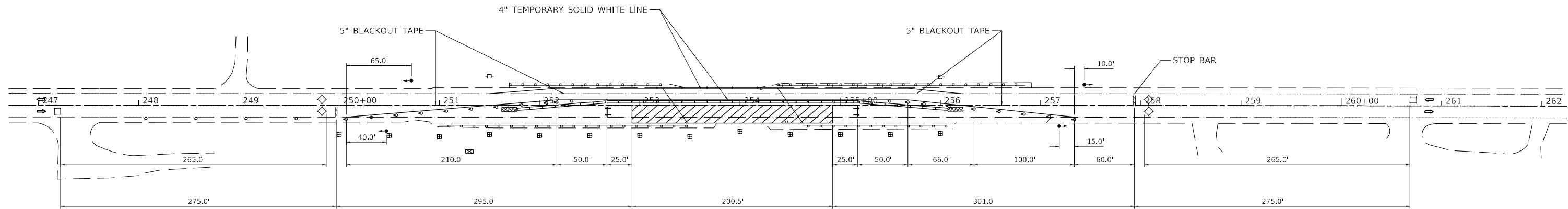
USER NAME = HURST-ROSCHE	DESIGNED -	REVISED -
PLOT SCALE = 100,0000' / in.	DRAWN -	REVISED -
PLOT DATE = 12/14/2023	CHECKED -	REVISED -
	DATE -	REVISED -

**STATE OF ILLINOIS  
DEPARTMENT OF TRANSPORTATION**












**MAINTENANCE OF TRAFFIC STAGE II PLANS  
S.N. 055-0042**

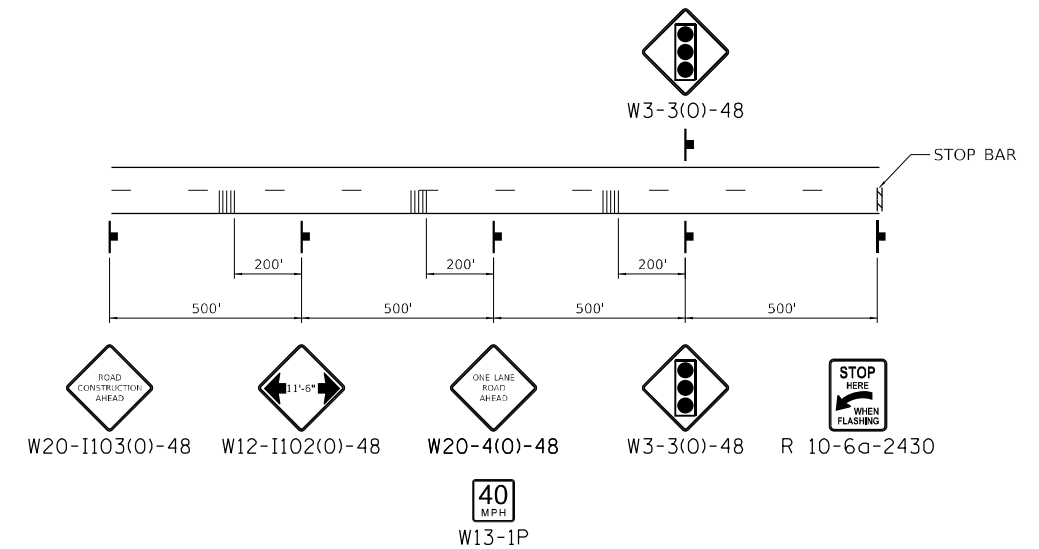
SCALE: 1" = 50' SHEET 2 OF 4 SHEETS STA. TO STA.

F.A.P. RTE.	SECTION	COUNTY	TOTAL SHEETS	SHEET NO.
685	(119B) BR-1, BR-2	MCDONOUGH	31	18
			CONTRACT NO. 68H25	
ILLINOIS FED. AID PROJECT				



**LEGEND**

-  WORK AREA
-  IMPACT ATTENUATOR
-  TEMPORARY CONCRETE BARRIER
-  SIGN
-  DETECTOR LOOP
-  TYPE III BARRICADE WITH FLASHING LIGHTS
-  DRUM WITH STEADY BURN BI-DIRECTIONAL LIGHT
-  DRUM
-  TRAFFIC SIGNAL
-  TEMPORARY RUMBLE STRIPS
-  CRYSTAL, BIDIRECTIONAL GUARDRAIL WALL REFLECTOR



**ADVANCE SIGNING IL 9**

MODEL: \\MODEL\MHMF  
 FILE NAME: X:\03\SEC\Current\192-1063 IDOT DA W02 P1B206-20 Various Bridges Preservation\DCM\68H25\68H25-sh119-Stage10\_3.dgn

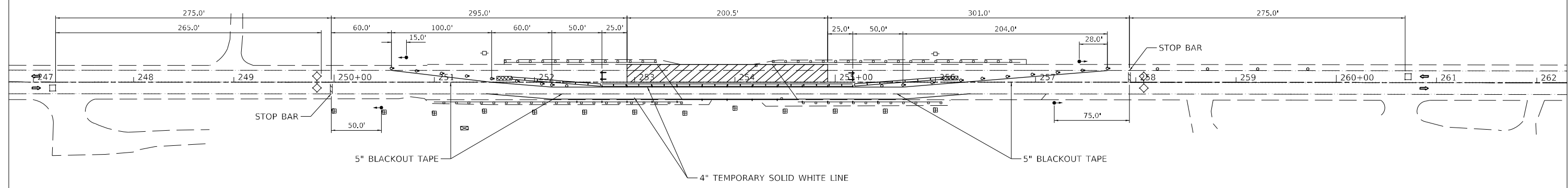
USER NAME = HURST-ROSCHE	DESIGNED -	REVISED -
	DRAWN -	REVISED -
PLOT SCALE = 100,0000' / in.	CHECKED -	REVISED -
PLOT DATE = 12/15/2023	DATE -	REVISED -

**STATE OF ILLINOIS**  
**DEPARTMENT OF TRANSPORTATION**

**MAINTENANCE OF TRAFFIC STAGE I PLANS**  
**S.N. 055-0043**

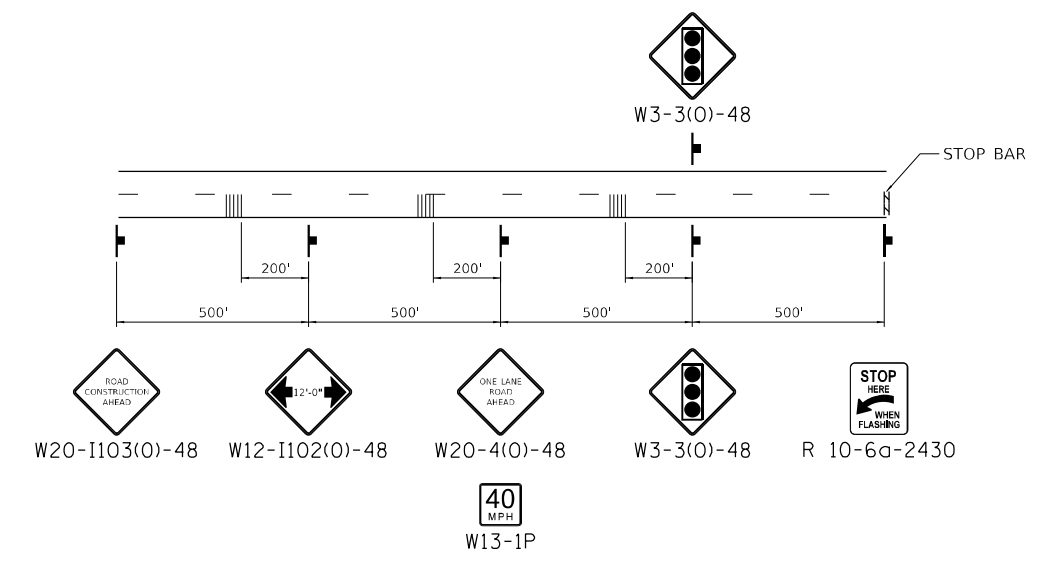
SCALE: 1" = 50'    SHEET 3    OF 4    SHEETS    STA.    TO STA.

F.A.P. RTE.	SECTION	COUNTY	TOTAL SHEETS	SHEET NO.
685	[(119B) BR-1, 2] BRR	MCDONOUGH	31	19
			CONTRACT NO. 68H25	
ILLINOIS FED. AID PROJECT				



**LEGEND**

- WORK AREA
- IMPACT ATTENUATOR
- TEMPORARY CONCRETE BARRIER
- SIGN
- DETECTOR LOOP
- TYPE III BARRICADE WITH FLASHING LIGHTS
- DRUM WITH STEADY BURN BI-DIRECTIONAL LIGHT
- DRUM
- TRAFFIC SIGNAL
- TEMPORARY RUMBLE STRIPS
- CRYSTAL, BIDIRECTIONAL GUARDRAIL WALL REFLECTOR



**ADVANCE SIGNING IL 9**

MODEL: I:\MODELS\MHMF  
 FILE NAME: X:\PROJECTS\Current\192-1063 IDOT DA W02 P1B206-20 Various Bridges Preservation\DCM\68H25\68H25-sh170-Stage04.dgn

USER NAME = HURST-ROSCHE	DESIGNED -	REVISED -
	DRAWN -	REVISED -
PLOT SCALE = 100,0000' / in.	CHECKED -	REVISED -
PLOT DATE = 12/15/2023	DATE -	REVISED -

**STATE OF ILLINOIS**  
**DEPARTMENT OF TRANSPORTATION**

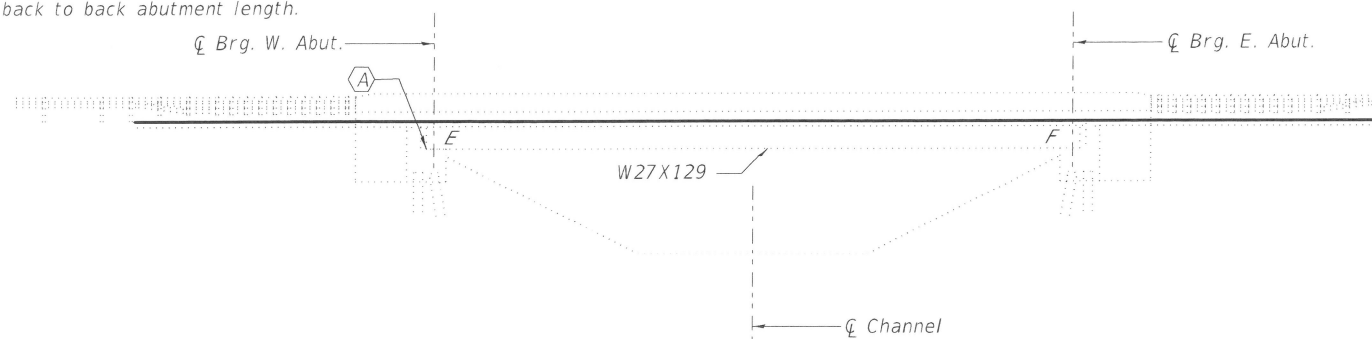
<b>MAINTENANCE OF TRAFFIC STAGE II PLANS</b> <b>S.N. 055-0043</b>			
SCALE: 1" = 50'	SHEET 4	OF 4 SHEETS	STA. TO STA.

F.A.P. RTE.	SECTION	COUNTY	TOTAL SHEETS	SHEET NO.
685	[(119B) BR-1, 2] BRR	MCDONOUGH	31	20
			CONTRACT NO. 68H25	
ILLINOIS FED. AID PROJECT				

Benchmark:  
Chiseled 'L' on Southeast Wingwall of Existing Structure. 17'-4 5/8" Rt. Sta. 149+31.38. Elev. 720.93.

Existing Structure No. 055-0042:

The existing structure is a single span bridge with a 7 3/8" concrete deck supported by 27" Wide-Flange beams. The structure was constructed in 1998 as Section (119B) BR-1. The superstructure is supported by open concrete abutments. It has an out to out deck width of 34'-9" and a 75'-0" back to back abutment length.



**SCOPE OF WORK**

1. Set up Traffic Control with Drums.
2. Perform Deck Slab Repairs as needed, Adjust Drainage Scuppers and Inlets, and Repair Concrete Curb.
3. Replace Bearings at West Abutment.
4. Perform Joint Reconstructions.
5. Perform Bridge Deck Scarification, 3/4".
6. Place Deck Microsilica Concrete Overlay, 2 1/4".
7. Switch Stages and Repeat.

**INDEX OF SHEETS**

1. General Plan and Elevation
2. Cross Section
3. Scupper and Inlet Adjustment Details
4. Joint Sections and Details - West Abutment
5. Joint Sections and Details - East Abutment
6. Preformed Joint Strip Seal
7. Bearing Details
8. Bar Splice Assembly and Mechanical Splicers Details

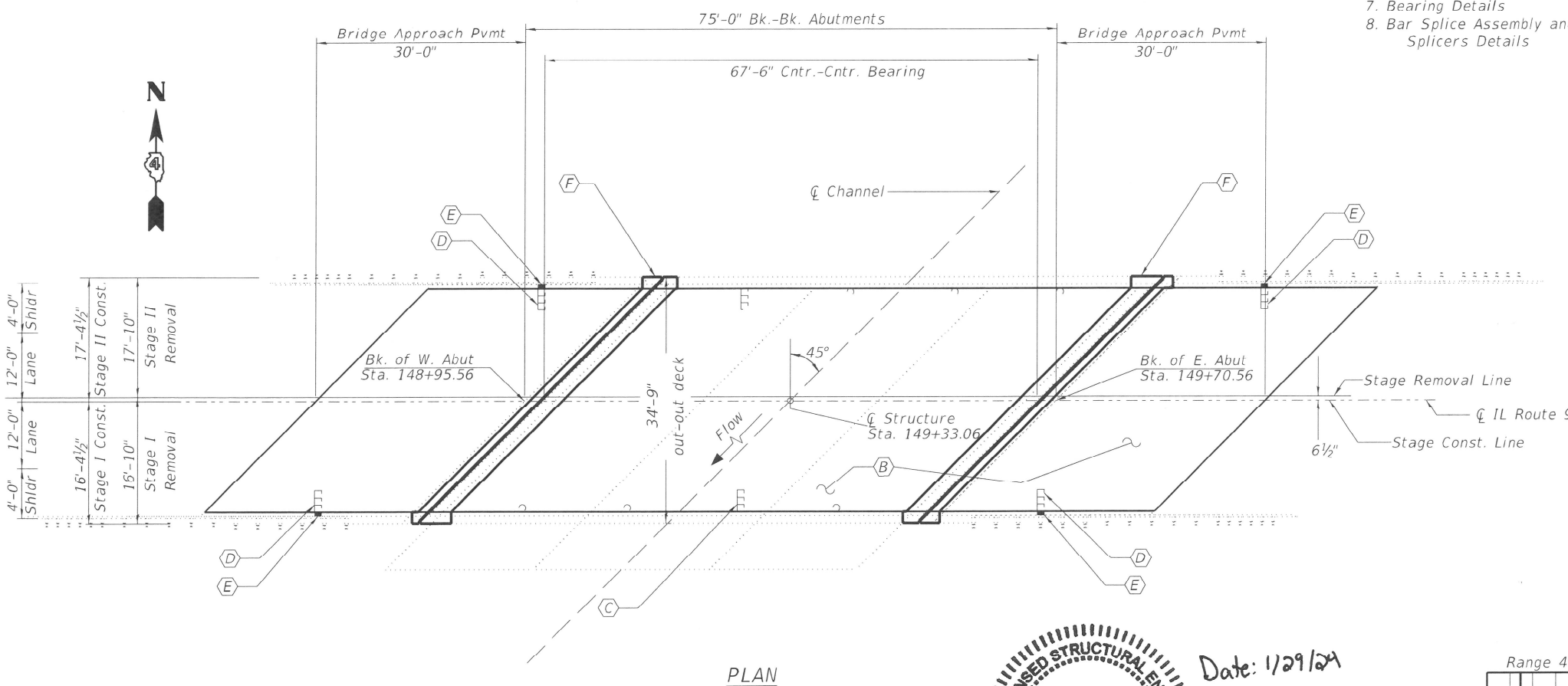
**TOTAL BILL OF MATERIAL**

Item	Unit	Quantity
Concrete Removal	Cu. Yd.	17.5
Concrete Superstructure	Cu. Yd.	17.5
Bridge Deck Grooving	Sq. Yd.	442
Protective Coat	Sq. Yd.	479
Furnishing and Erecting Structural Steel	Pound	380
Reinforcement Bars, Epoxy Coated	Pound	1530
Bar Splicers	Each	18
Preformed Joint Strip Seal	Foot	93
Elastomeric Bearing Assembly Type I	Each	6
Anchor Bolts	Each	12
Inlets to be Adjusted	Each	4
* Jack and Remove Existing Bearings	Each	6
* Bridge Deck Scarification, 3/4"	Sq. Yd.	472
* Bridge Deck Microsilica Concrete Overlay 2 1/4"	Sq. Yd.	472
* Concrete Curb Repair	Foot	12
Drainage Scuppers to be Adjusted	Each	2

\* Denotes Special Provision

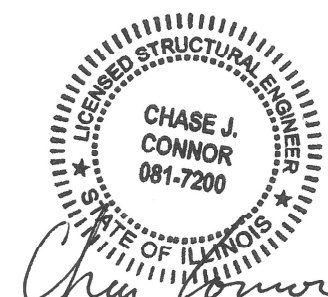
**GENERAL NOTES**

Reinforcement bars designated (E) shall be epoxy coated. Existing structural steel that will be in contact with new structural steel shall be cleaned and painted prior to erection as required by the Special Provision "Cleaning and Painting Contact Surface Areas of Existing Steel Structures." Prior to pouring the new concrete deck, all heavy and loose mill scale and other loose or potentially detrimental foreign material shall be removed from the surfaces in contact with concrete. Tightly adhered paint may remain unless otherwise noted. Removal shall be accomplished by methods that will not damage the steel and the cost will be included in concrete removal. Plan dimensions and details relative to existing plans are subject to nominal construction variations. The contractor shall field verify existing dimensions and details affecting new construction and make necessary approved adjustments prior to construction or ordering of materials. Such variation shall not be cause for additional compensation for a change in the scope of work, however. The contractor will be paid for the quantity actually furnished at the unit price bid for work. Existing reinforcement bars extending into the removal area shall be cleaned, straightened, and incorporated into the new construction. Any reinforcement bars that are damaged during concrete removal shall be replaced with an approved bar splicer or anchorage system. Cost included with concrete removal. Joint openings shall be adjusted according to article 520.04 of the standard specifications when the deck is poured at an ambient temperature other than 50 degrees Fahrenheit.



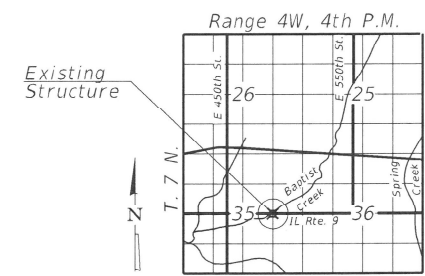
**KEYED NOTES**

- (A) Elastomeric Bearing Replacement
- (B) Bridge Deck Scarification 3/4" and 2 1/4" Microsilica Concrete Overlay
- (C) Deck Drainage Scupper Adjustment
- (D) Approach Inlet Grate Adjustment
- (E) Concrete Curb Repair
- (F) Expansion Joint Replacement



Date: 1/29/24

CHASE J. CONNOR, P.E., S.E.  
ILLINOIS STRUCTURAL NO. 7200  
EXPIRES: NOVEMBER 30, 2024



**BRIDGE REPAIRS  
ILLINOIS ROUTE 9  
OVER BAPTIST CREEK  
MCDONOUGH COUNTY  
STATION 149+33.06  
STRUCTURE NO. 055-0042**

MODEL: S:\MODEL\NAMES  
FILE NAME: X:\Projects\Current\1192-1063 IDOT DA W02 PFB206-20 Various Bridges Preservation\06N18H25\055-0042\0550002-01-gpe.dgn

**HR**  
Hurst-Rosche, Inc.  
PROFESSIONAL DESIGN NUMBER: 14-00004  
1400 E. TREMONT ST.  
HILLSBORO, IL  
PH: 217.532.3959  
JOB NO. 192-1063

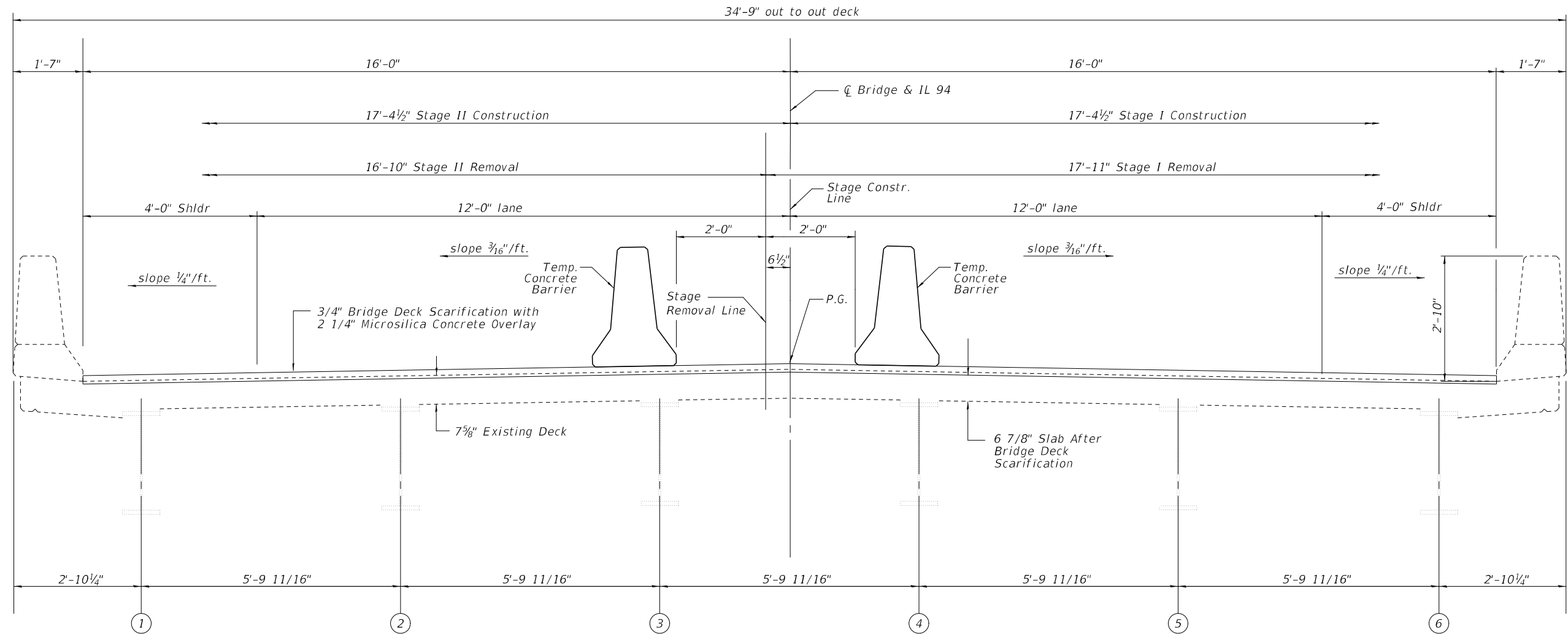
USER NAME =	DESIGNED - JJC	REVISD
PLOT SCALE =	CHECKED - CJC	REVISD -
PLOT DATE =	DRAWN - AE	REVISD -
	CHECKED - CJC	REVISD -

STATE OF ILLINOIS  
DEPARTMENT OF TRANSPORTATION

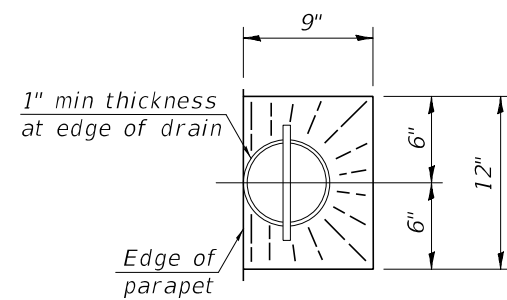
GENERAL PLAN & ELEVATION  
STRUCTURE NO. 055-0042

SHEET 1 OF 8 SHEETS

F.A. RTE.	SECTION	COUNTY	TOTAL SHEETS	SHEET NO.
685	119B BR-1	MCDONOUGH	31	21
CONTRACT NO. 68H25				
ILLINOIS FED. AID PROJECT				

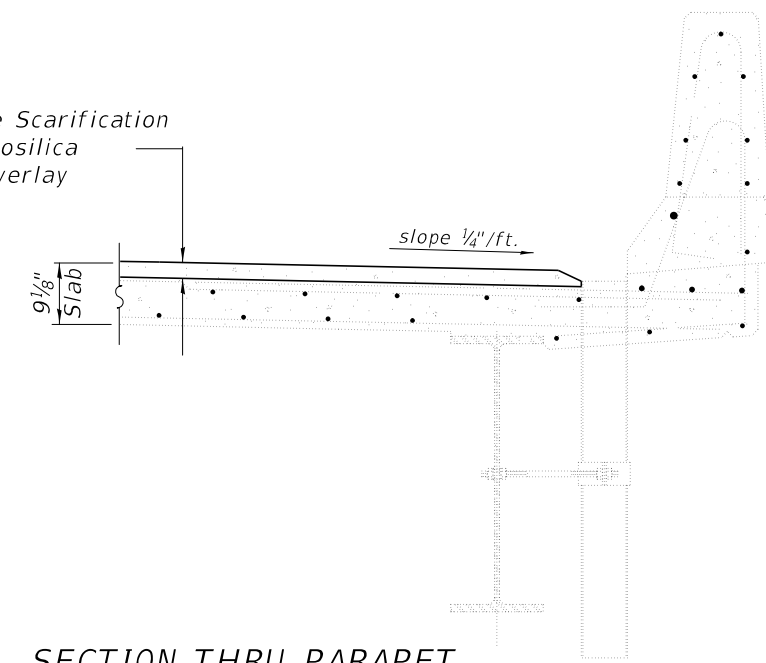


**CROSS SECTION**  
(Looking East)



**DRAIN DETAIL**  
(slope to drain)

3/4" Bridge Scarification  
2 1/4" Microsilica  
Concrete Overlay



**SECTION THRU PARAPET**  
(at drain)

**STATE OF ILLINOIS**  
**DEPARTMENT OF TRANSPORTATION**

**CROSS SECTION**  
**STRUCTURE NO. 055-0042**

SHEET 2 OF 8 SHEETS

F.A. RTE.	SECTION	COUNTY	TOTAL SHEETS	SHEET NO.
685	119B BR-1	MCDONOUGH	31	22
			CONTRACT NO. 68H25	

ILLINOIS FED. AID PROJECT

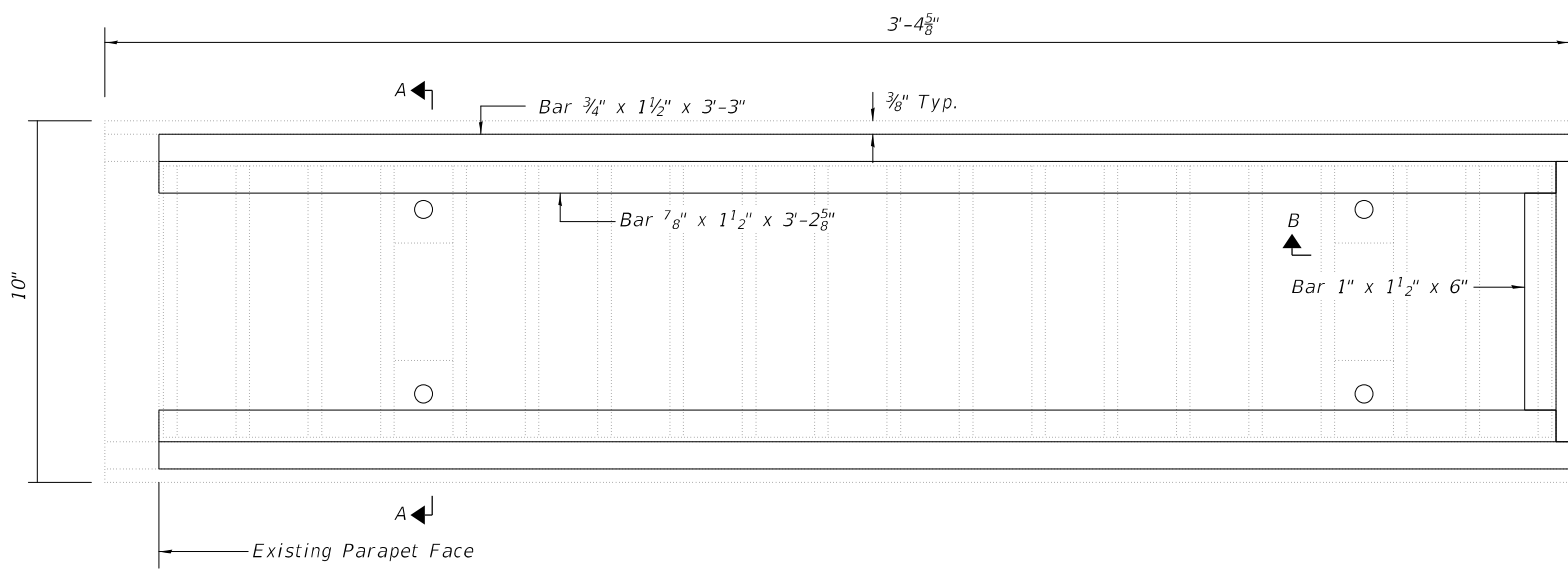
MODEL: \$MODELNAME\$.  
FILE NAME: X:\Projects\Current\192-1063 IDOT D4 W02 PTB206-30 Various Bridges Preservation\DCM168H25\055-0042\0550042-02- Cross Section.dgn

**HR**  
Hurst-Rosche, Inc.  
1400 E. TREMONT ST.  
HILLSBORO, IL  
PH: 217.532.3959  
JOB NO. 192-1063

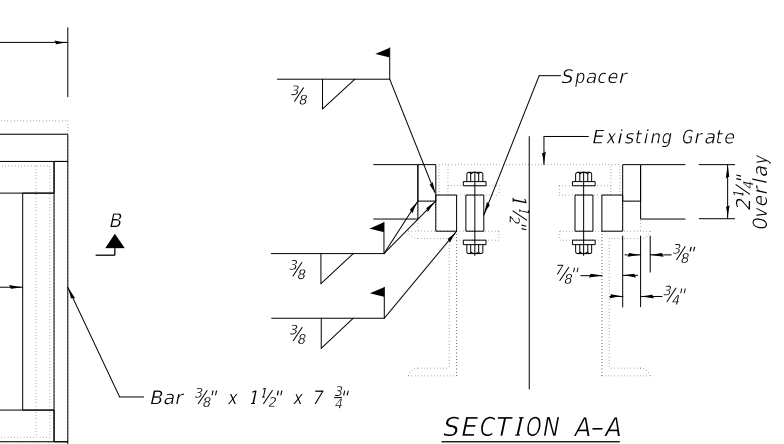
USER NAME =	DESIGNED - JJC	REVISED
	CHECKED - CJC	REVISED -
PLOT SCALE =	DRAWN - AE	REVISED -
PLOT DATE =	CHECKED - CJC	REVISED -

1/29/2024 9:47:15 AM

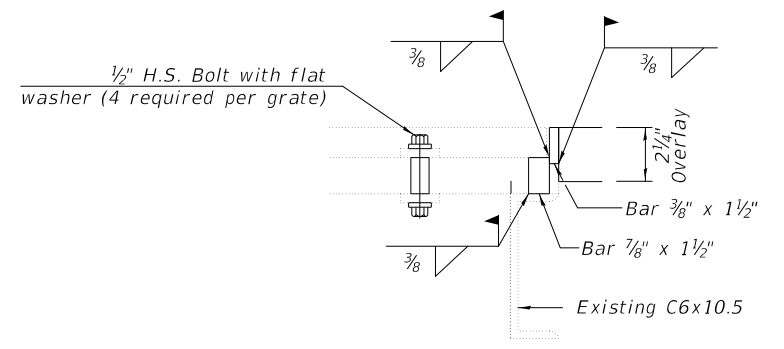
MODEL: SMODELNAME  
 FILE NAME: X:\Projects\Current\192-1063 IDOT D4 W02 PTB206-30 Various Bridges Preservation\DGN\68H25055-0042\0550042-03-scupper and inlet adjustment details.dgn



**DRAINAGE SCUPPER - PLAN**

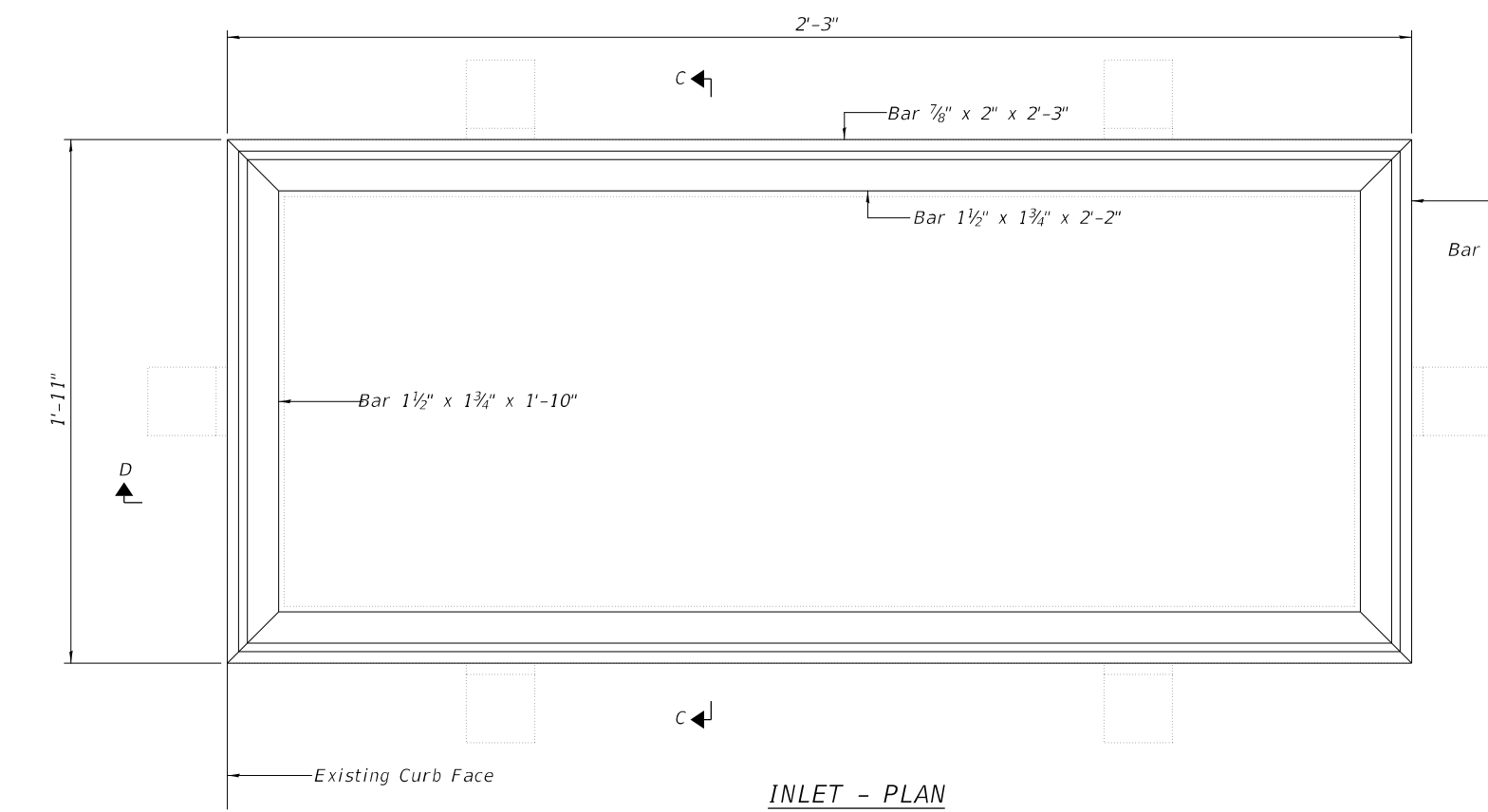


**SECTION A-A**

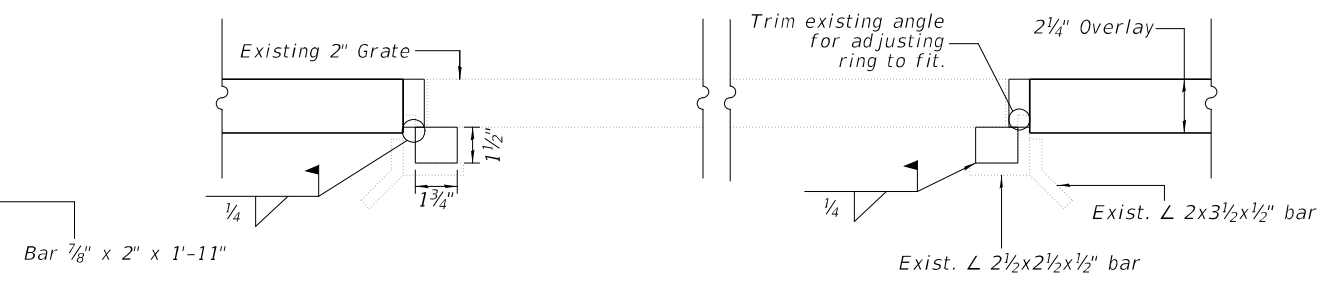


**SECTION B-B**

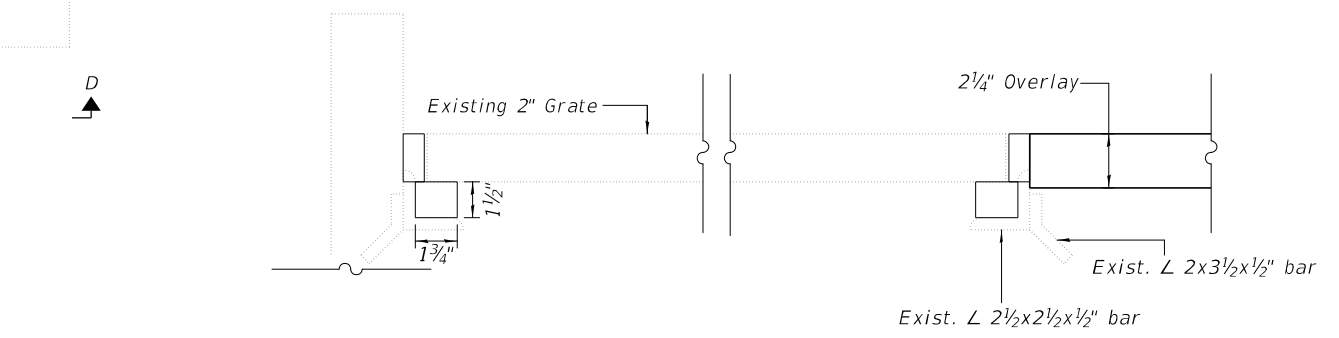
Notes:  
 The contractor shall ensure that no damage is done to existing grates to be reused.  
 Shop plans for proposed adjusting inlet ring shall be submitted for approval prior to fabrication.  
 Cost of all labor and materials necessary to remove existing grates, clean existing inlets, install adjusting inlet rings and reinstalling grates is included in the cost per unit for Inlets to be Adjusted.  
 All structural steel shall conform to AASHTO Classification M-270 Gr. 36. The adjusting inlet ring shall be galvanized.  
 Bolts shall be 1/2"  $\phi$ , AASHTO M164 Type 1, mechanically galvanized.  
 Existing Approach Draining dimensions per IDOT standard 609006.



**INLET - PLAN**



**SECTION C-C**



**SECTION D-D**

**BILL OF MATERIAL**

ITEM	UNIT	TOTAL
Inlets to be Adjusted	Each	4
Drainage Scuppers to be Adjusted	Each	2

**HR**  
 Hurst-Rosche, Inc.  
 1400 E. TREMONT ST.  
 HILLSBORO, IL  
 PH: 217.532.3959  
 JOB NO. 192-1063

USER NAME =	DESIGNED - JJC	REVISED -
PLOT SCALE =	CHECKED - CJC	REVISED -
PLOT DATE =	DRAWN - AE	REVISED -
	CHECKED - CJC	REVISED -

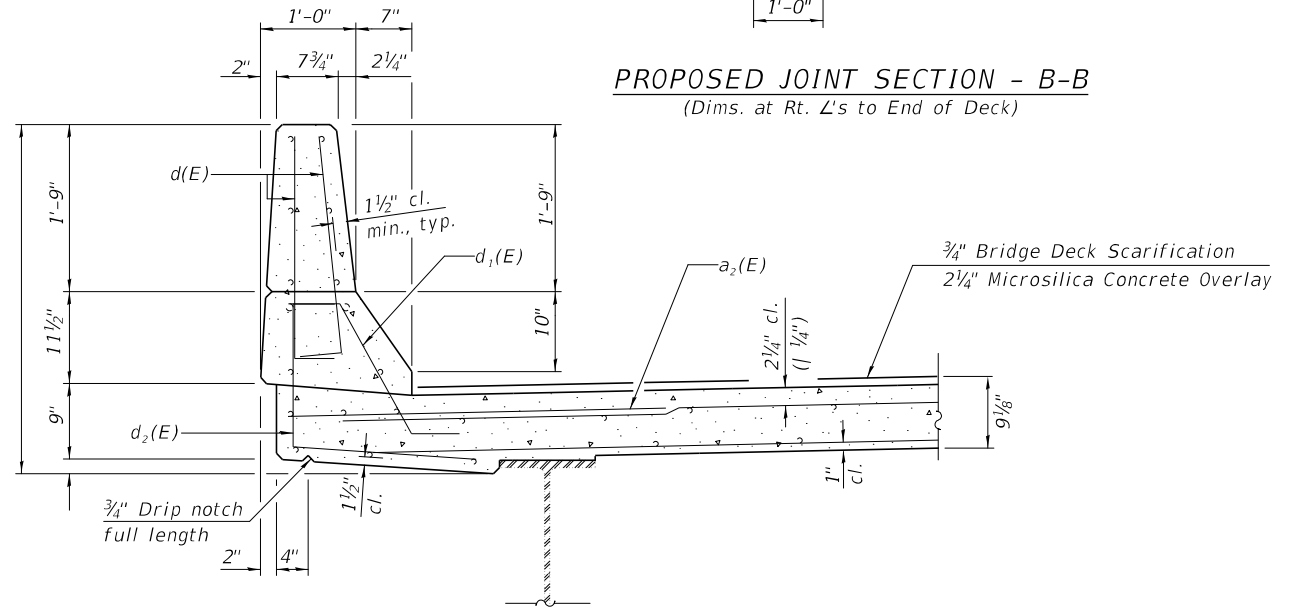
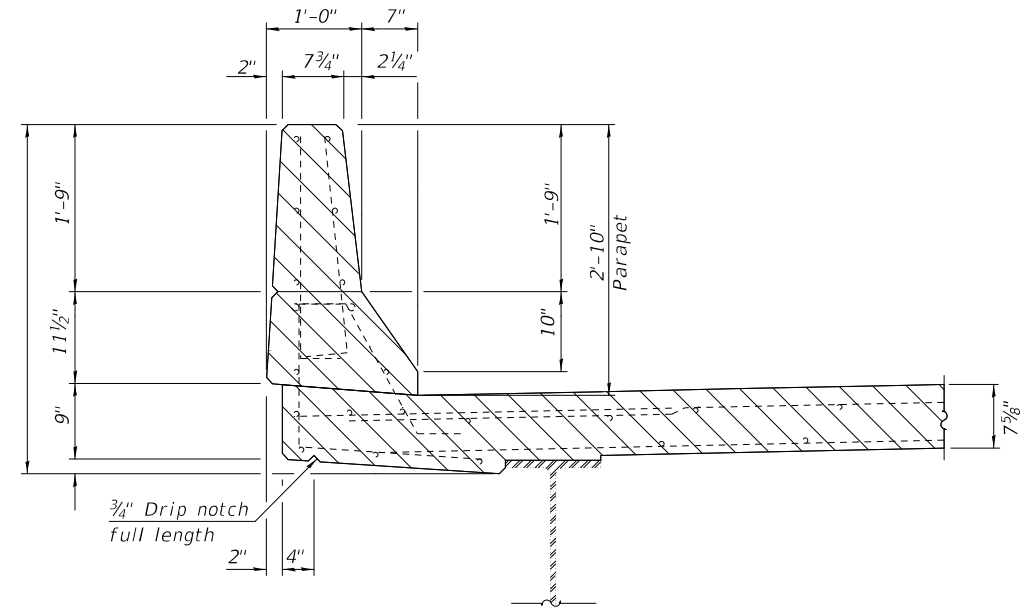
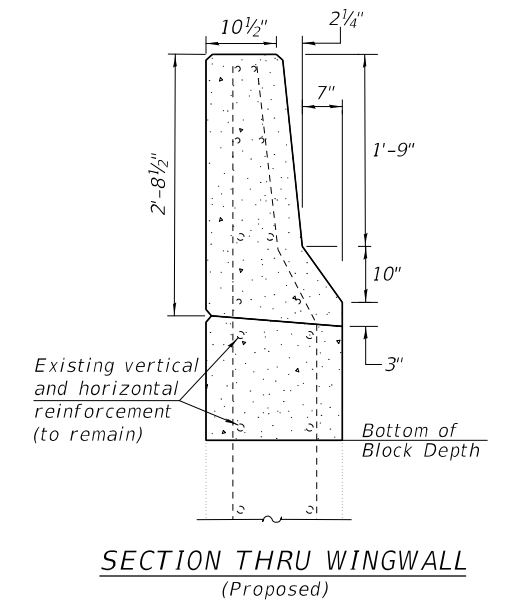
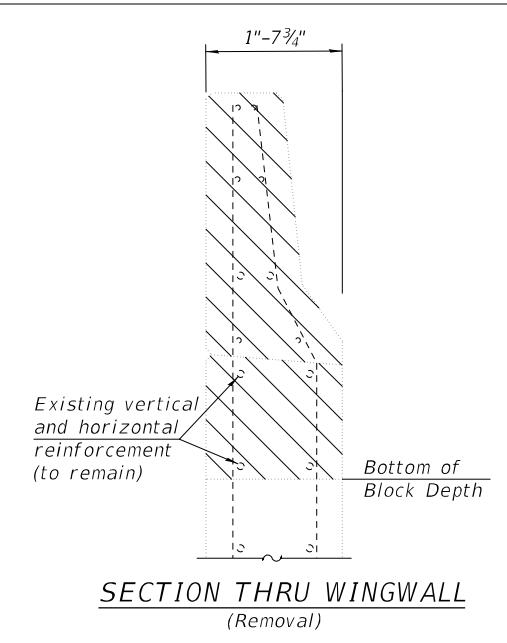
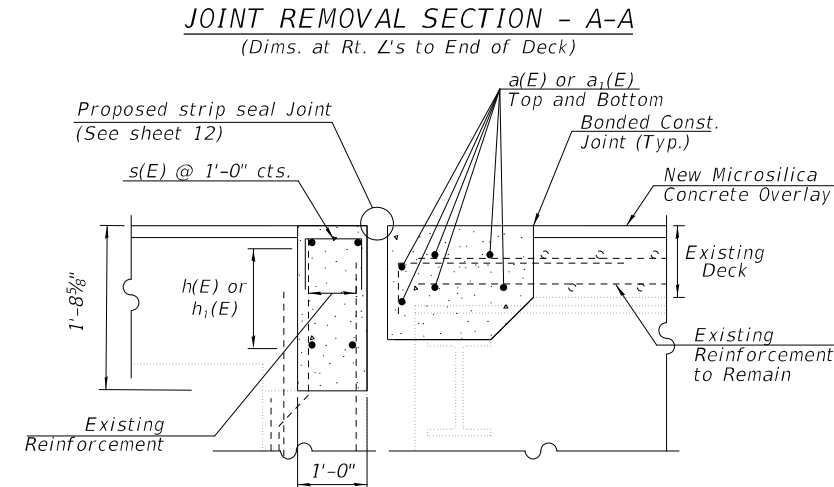
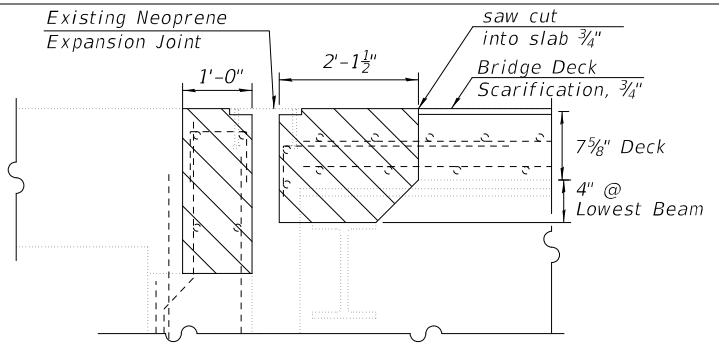
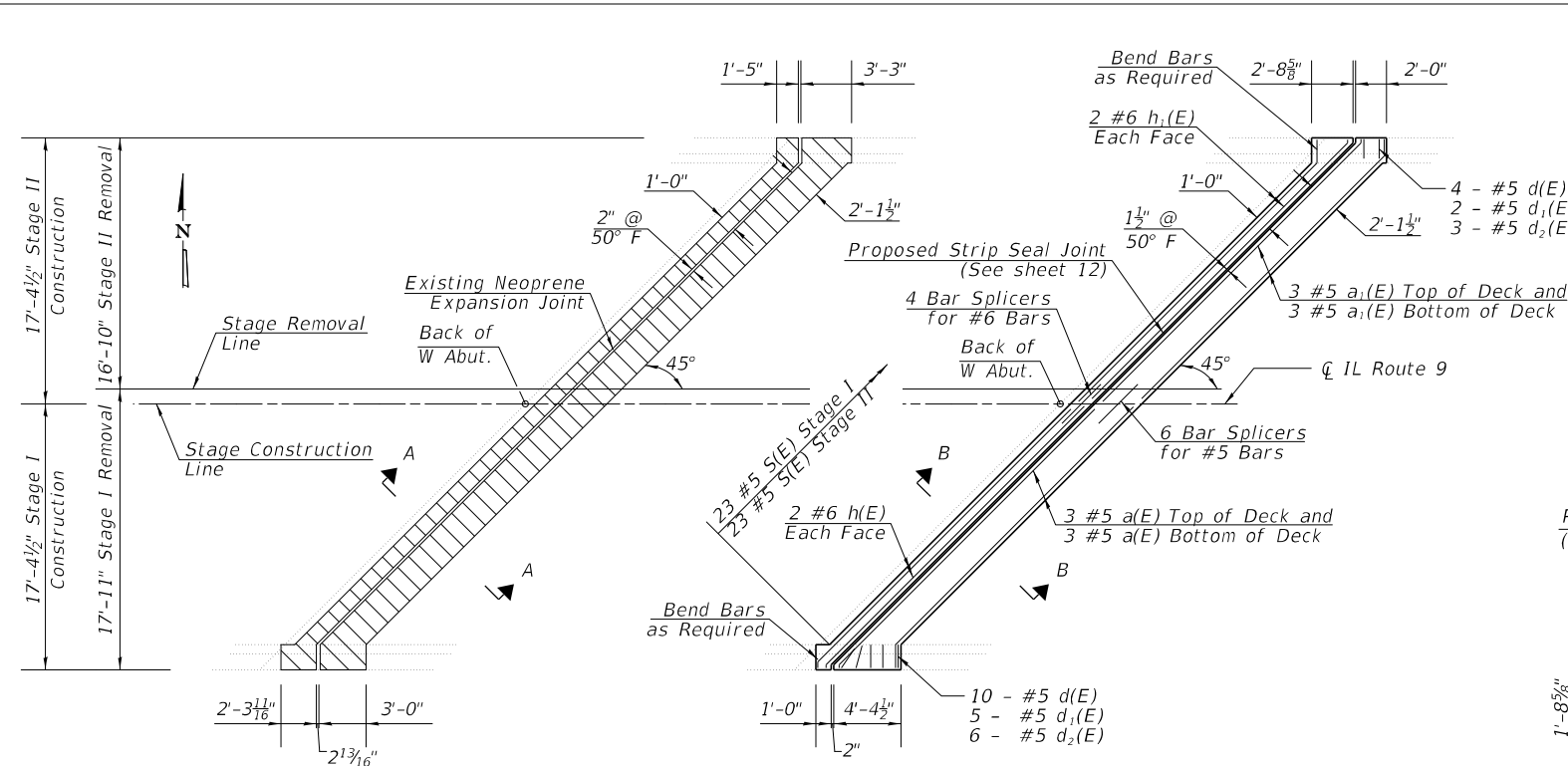
**STATE OF ILLINOIS  
 DEPARTMENT OF TRANSPORTATION**

**SCUPPER & INLET ADJUSTMENT DETAILS  
 STRUCTURE NO. 055-0042**

SHEET 3 OF 8 SHEETS

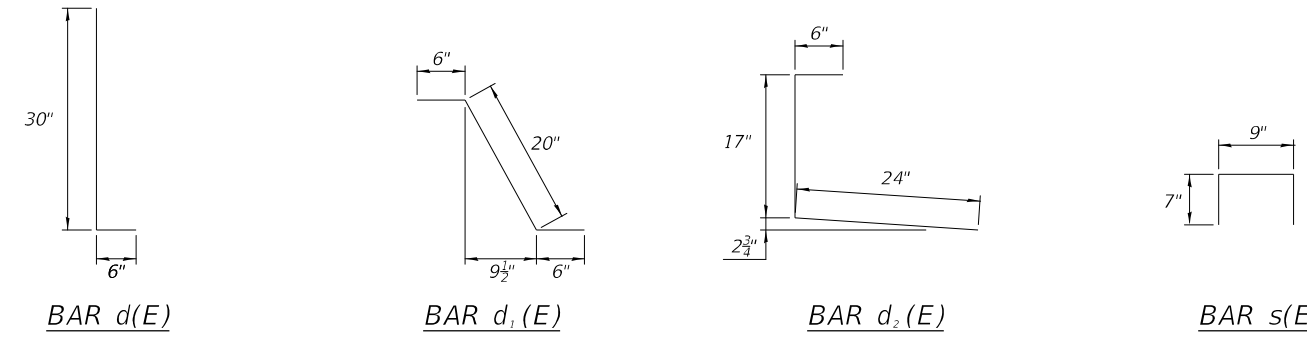
F.A. RTE.	SECTION	COUNTY	TOTAL SHEETS	SHEET NO.
685	119B BR-1	MCDONOUGH	31	23
CONTRACT NO. 68H25				
ILLINOIS FED. AID PROJECT				

MODEL: S:\MODELS\MAMES  
 FILE NAME: X:\Projects\Current\192-1063 IDOT D4 W02 PTB206-30 Various Bridges Preservation\G68H25055-0042\0550042-04-joint replacement plan - west abutment.dgn



**NOTES**

- Hatched areas indicate Concrete Removal.
- Removal of existing expansion joint shall be included in the cost of concrete removal.
- The contractor shall use extreme care during concrete removal so as not to damage the wide flange beams.
- Cut reinforcing bars in field to fit as required.



**SUPERSTRUCTURE BILL OF MATERIAL**

Bar	No.	Size	Length	Shape
a(E)	6	#5	24'-3"	—
a <sub>1</sub> (E)	6	#5	24'-3"	—
a <sub>2</sub> (E)	6	#5	3'-11"	—
h(E)	4	#6	24'-3"	—
h <sub>1</sub> (E)	4	#6	24'-3"	—
s(E)	46	#5	2'-0"	┌
d(E)	14	#5	3'-0"	└
d <sub>1</sub> (E)	7	#5	2'-8"	┌
d <sub>2</sub> (E)	9	#5	3'-11"	└
Reinforcement Bars, Epoxy Coated				Lbs. 815
Concrete Superstructure				Cu. Yds. 9.0
Concrete Removal				Cu. Yds. 8.9

**HR** Hurst-Rosche, Inc.  
 1400 E. TREMONT ST.  
 HILLSBORO, IL  
 PH: 217.532.3959  
 JOB NO. 192-1063

USER NAME =	DESIGNED - JJC	REVISED -
PLOT SCALE =	CHECKED - CJC	REVISED -
PLOT DATE =	DRAWN - AE	REVISED -
	CHECKED - CJC	REVISED -

**STATE OF ILLINOIS DEPARTMENT OF TRANSPORTATION**

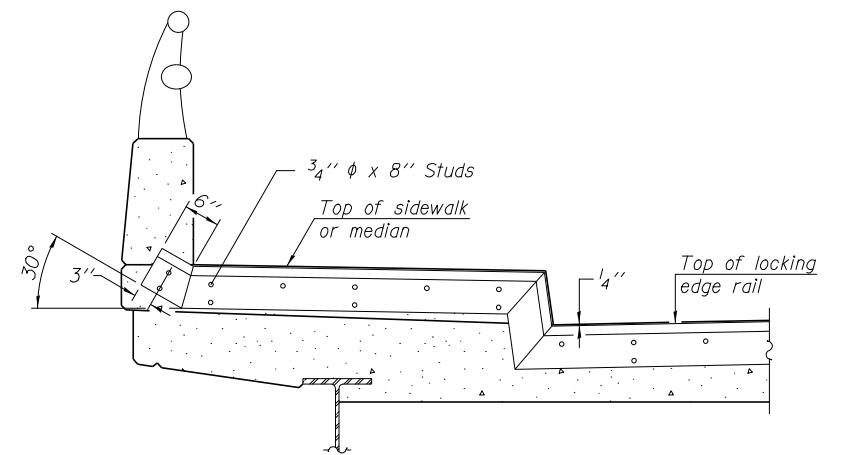
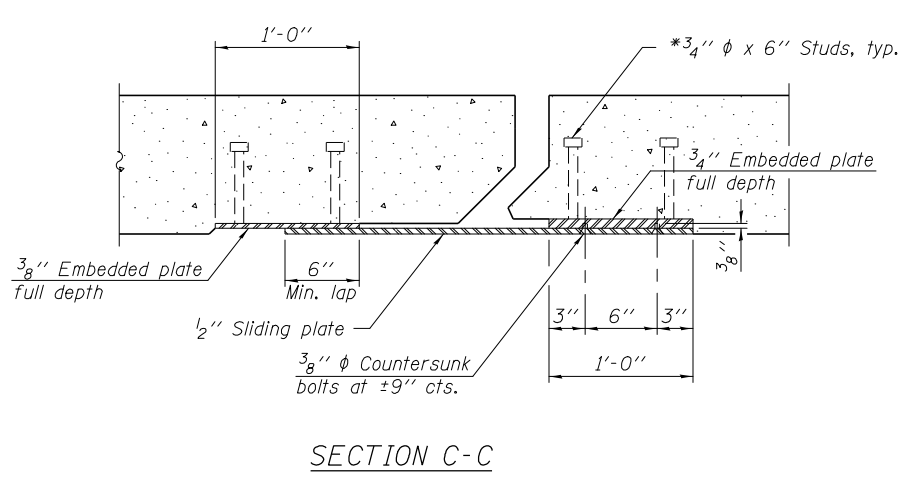
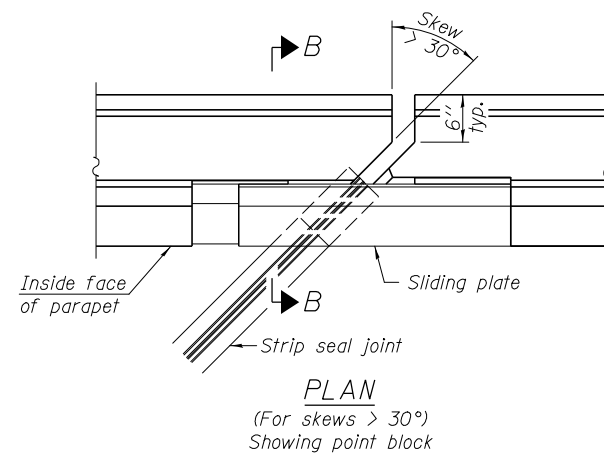
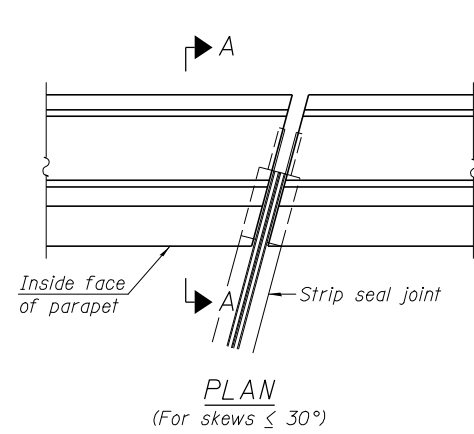
**JOINT SECTIONS AND DETAILS - WEST ABUTMENT**  
**STRUCTURE NO. 055-0042**  
 SHEET 4 OF 8 SHEETS

F.A. RTE.	SECTION	COUNTY	TOTAL SHEETS	SHEET NO.
685	119B BR-1	MCDONOUGH	31	24
CONTRACT NO. 68H25				
ILLINOIS FED. AID PROJECT				

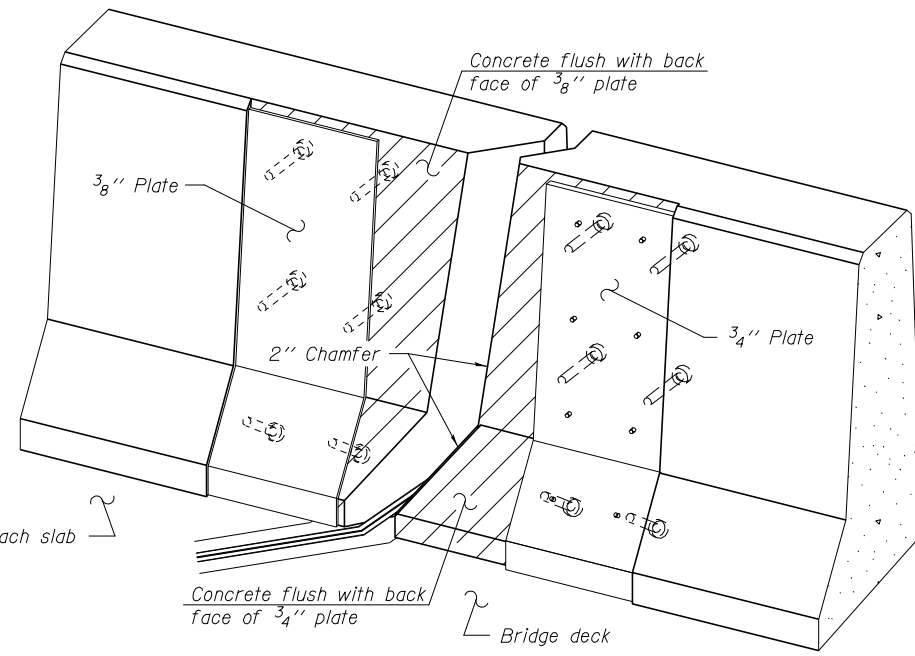
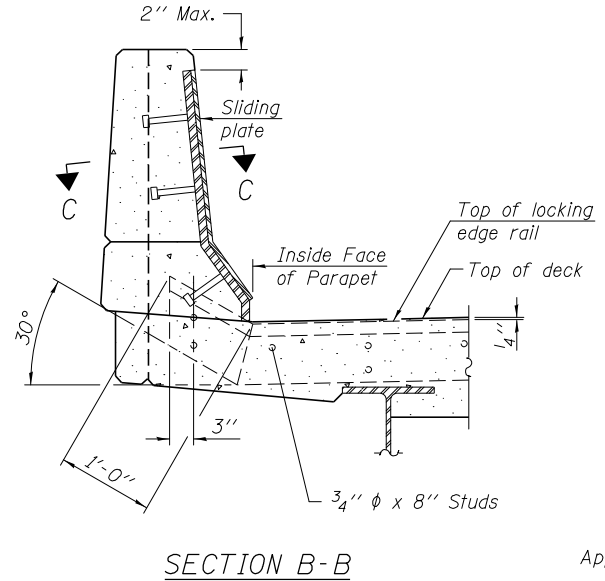
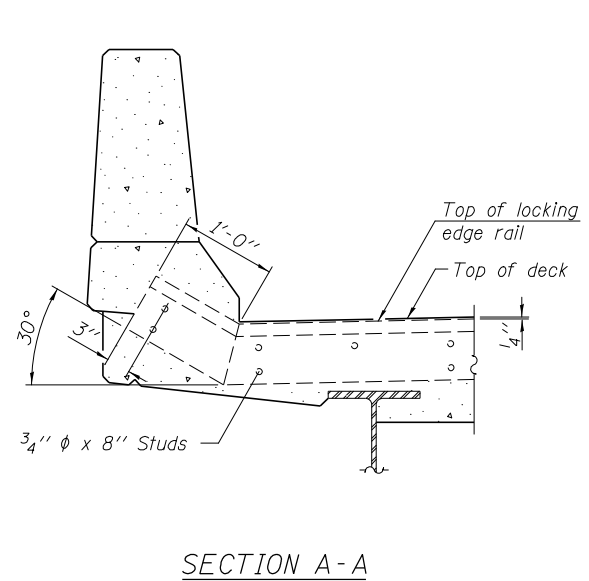




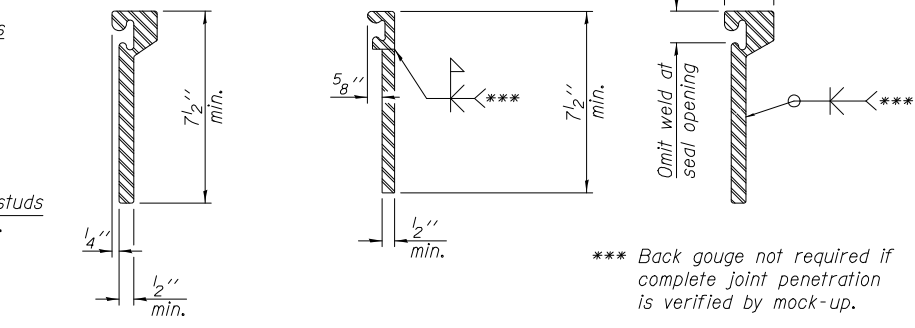
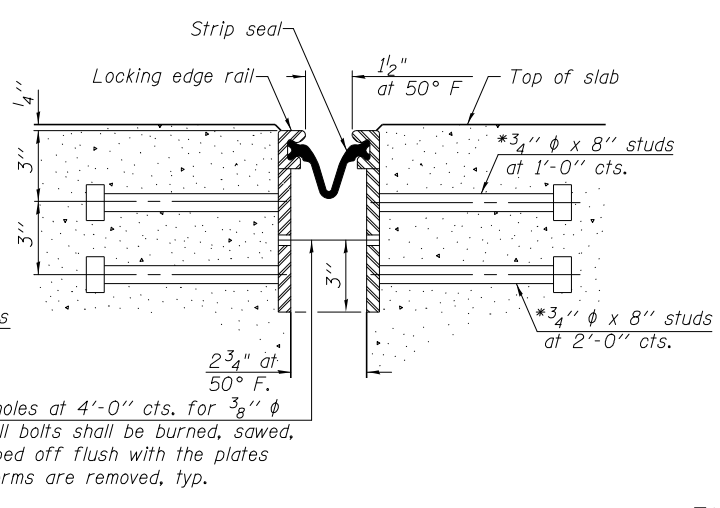
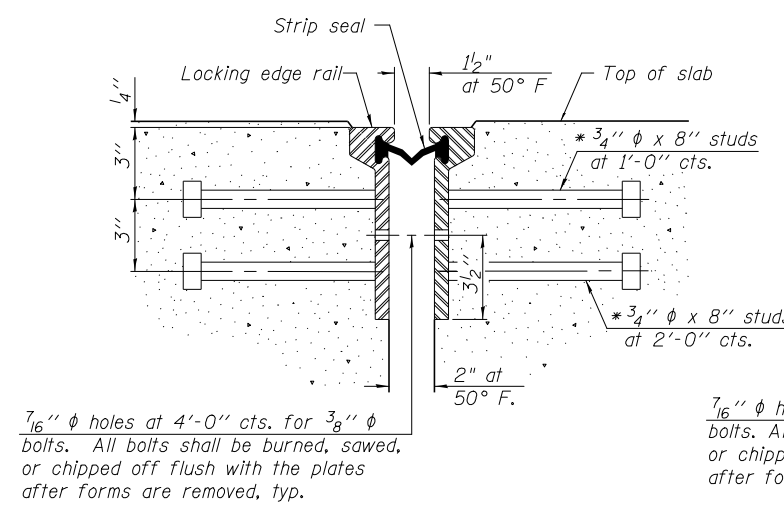
MODEL: SMODELNAMES  
 FILE NAME: X:\Projects\Current\192-1063 IDOT D4 W02 PTB206-30 Various Bridges Preservation\192-1063-0042\0550042-06-preformed joint strip seal.dgn



**TYPICAL END TREATMENT AT SIDEWALK OR MEDIAN**  
 Shorter plates with a single row of studs at 12" cts. may be necessary on medians which are shallower than 9". See manufacturer's recommendation.



**Notes:**  
 The strip seal shall be made continuous and shall have a minimum thickness of 1/4". The configuration of the strip seal shall match the configuration of the Locking Edge Rails. Open or "webbed" strip seal gland configurations are not permitted. The gland shall be sized for a maximum rated movement of 4 inches.  
 The Locking Edge Rails depicted are conceptual only, except for the minimum dimensions shown. The actual configuration of the Locking Edge Rails and matching strip seal may vary from manufacturer to manufacturer. Flanged edge rails will not be allowed. Locking Edge Rails may be spliced at slope discontinuities.  
 The manufacturer's recommended installation methods shall be followed.  
 The joint opening and deck dimensions detailed on the superstructure are based on a rolled rail expansion joint. If the Contractor elects to use the welded rail expansion joint, the opening and deck dimensions shall be modified according to the dimensions detailed on this sheet. Required modifications shall be made at no additional cost to the State.  
 All steel components shall be galvanized after fabrication according to Article 520.03 of the Standard Specifications.  
 Maximum space between rail segments shall be 3/16", sealed with a suitable sealant. Joints in rails within 10 ft. of curbs shall be welded.  
 Parapet plates and anchorage studs for skews  $> 30^\circ$  included in the cost of Preformed Joint Strip Seal.



\*\*\* Back gouge not required if complete joint penetration is verified by mock-up.

**SECTION THRU ROLLED RAIL JOINT**

**SECTION THRU WELDED RAIL JOINT**

**LOCKING EDGE RAILS**

**BILL OF MATERIAL**

Item	Unit	Total
Preformed Joint Strip Seal	Foot	93

\* Granular or solid flux filled headed studs conforming to Article 1006.32 of the Std. Specs., automatically end welded.

EJ-SSJ 1-27-12

**HR**  
 Hurst-Rosche, Inc.  
 1400 E. TREMONT ST.  
 HILLSBORO, IL  
 PH: 217.532.3959  
 JOB NO. 192-1063

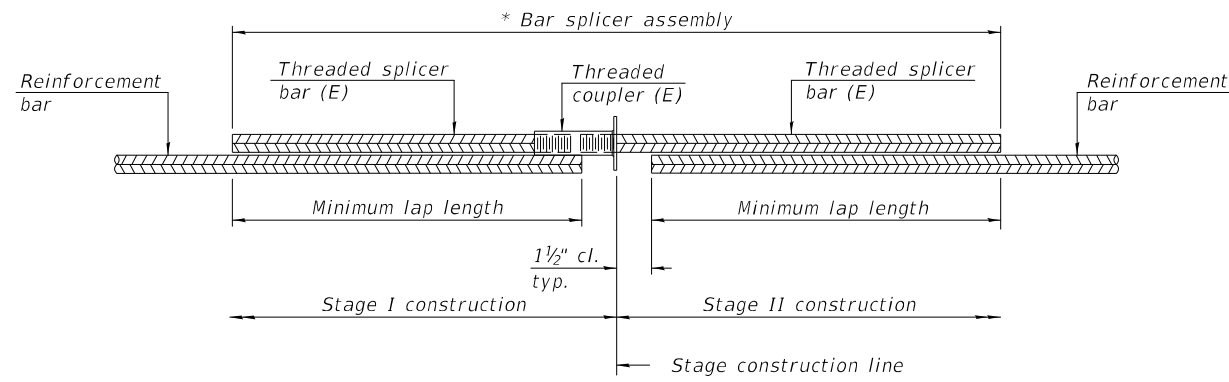
USER NAME =	DESIGNED - JJC	REVISED -
PLOT SCALE =	CHECKED - CJC	REVISED -
PLOT DATE =	DRAWN - AE	REVISED -
	CHECKED - CJC	REVISED -

**STATE OF ILLINOIS**  
**DEPARTMENT OF TRANSPORTATION**

**PREFORMED JOINT STRIP SEAL**  
**STRUCTURE NO. 055-0042**  
 SHEET 6 OF 8 SHEETS

F.A. RTE.	SECTION	COUNTY	TOTAL SHEETS	SHEET NO.
685	119B BR-1	MCDONOUGH	31	26
CONTRACT NO. 68H25				
ILLINOIS FED. AID PROJECT				





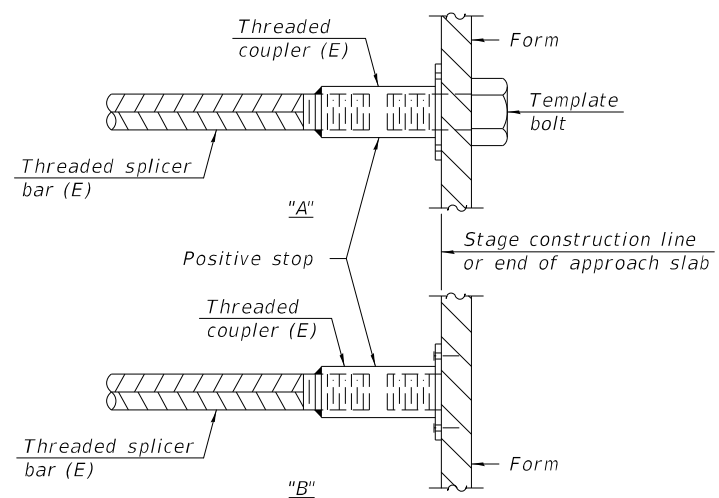
**STANDARD BAR SPLICER ASSEMBLY PLAN**

Only bar splicer assemblies as presented on the approved QPL list may be used.

Threaded splicer bar length = min. lap length + 1 1/2" + thread length

\* Epoxy not required on Bar Splicer Assembly components used in conjunction with black bars.

Location	Bar size	No. assemblies required	Minimum lap length
West Abutment	#5	6	3'-6"
East Abutment	#5	4	3'-6"
Hatch Block	#6	8	4'-0"

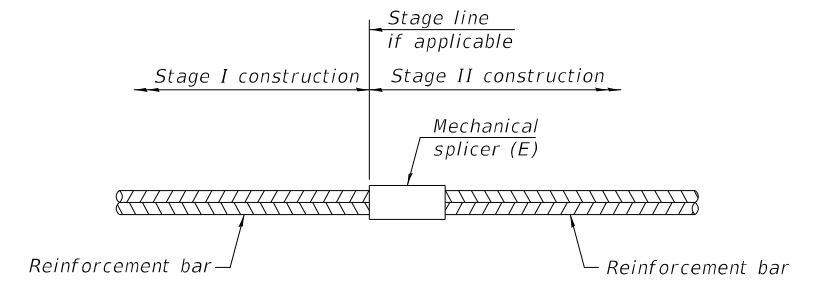


**INSTALLATION AND SETTING METHODS**

"A" : Set bar splicer assembly by means of a template bolt.

"B" : Set bar splicer assembly by nailing to wood forms or cementing to steel forms.

(E) : Indicates epoxy coating.



**STANDARD MECHANICAL SPLICER**

Location	Bar size	No. assemblies required

**Notes:**

Splicer bars shall be deformed with threaded ends and have a minimum 60 ksi yield strength.

All reinforcement shall be lapped and tied to the splicer bars.

Bar splicer assemblies shall be epoxy coated according to the requirements for reinforcement bars. See Section 508 of the Standard Specifications.

See approved list of bar splicer assemblies and mechanical splicers for alternatives.

MODEL: SMODELNAMES  
FILE NAME: X:\Projects\Current\192-1063 IDOT D4 W02 PTB206-30 Various Bridges Preservation\DGN\68H25\055-0042\0550042-08-Bar Splice Assembly and Mechanical Splicers Details.dgn

**HR**  
Hurst-Rosche, Inc.  
1400 E. TREMONT ST.  
HILLSBORO, IL  
PH: 217.532.3959  
JOB NO. 192-1063

USER NAME = _____	DESIGNED - JJC	REVISED
	CHECKED - CJC	REVISED - _____
PLOT SCALE = _____	DRAWN - AE	REVISED - _____
PLOT DATE = _____	CHECKED - CJC	REVISED - _____

**STATE OF ILLINOIS  
DEPARTMENT OF TRANSPORTATION**

**BAR SPLICER ASSEMBLY AND MECHANICAL SPLICER DETAILS  
STRUCTURE NO. 055-0042**

SHEET 8 OF 8 SHEETS

F.A. RTE.	SECTION	COUNTY	TOTAL SHEETS	SHEET NO.
685	119B BR-1	MCDONOUGH	31	28
CONTRACT NO. 68H25				
ILLINOIS FED. AID PROJECT				

Benchmark:  
Chiseled "□" on Northeast Wingwall of Existing Structure. 5m Lt, Sta. 253+87.97, Elev. 725.85.

Existing Structure No. 055-0043:

The existing structure is a single span bridge with a 7<sup>3</sup>/<sub>8</sub>" concrete deck supported by 36" PPC I-beams. The structure was constructed in 1998 as Section (119B) BR-1. The superstructure is supported by open concrete abutments. It has an out to out deck width of 34'-9" and a 56'-0" back to back abutment length.

**TOTAL BILL OF MATERIAL**

Item	Unit	Quantity
Bridge Deck Grooving	Sq. Yd.	380
Protective Coat	Sq. Yd.	406
Inlets to be Adjusted	Each	2
* Bridge Deck Scarification 3/4"	Sq. Yd.	406
* Bridge Deck Microsilica Concrete Overlay 2 1/4"	Sq. Yd.	406
* Concrete Curb Repair	Foot	6

\* Denotes Special Provision

**INDEX OF SHEETS**

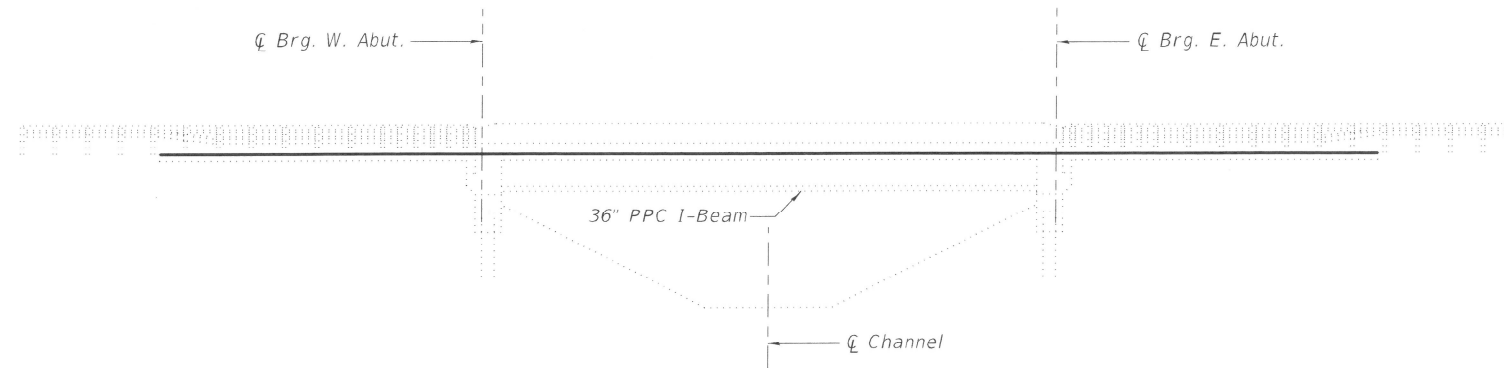
1. General Plan and Elevation
2. Cross Section
3. Inlet Adjustment Details

**SCOPE OF WORK**

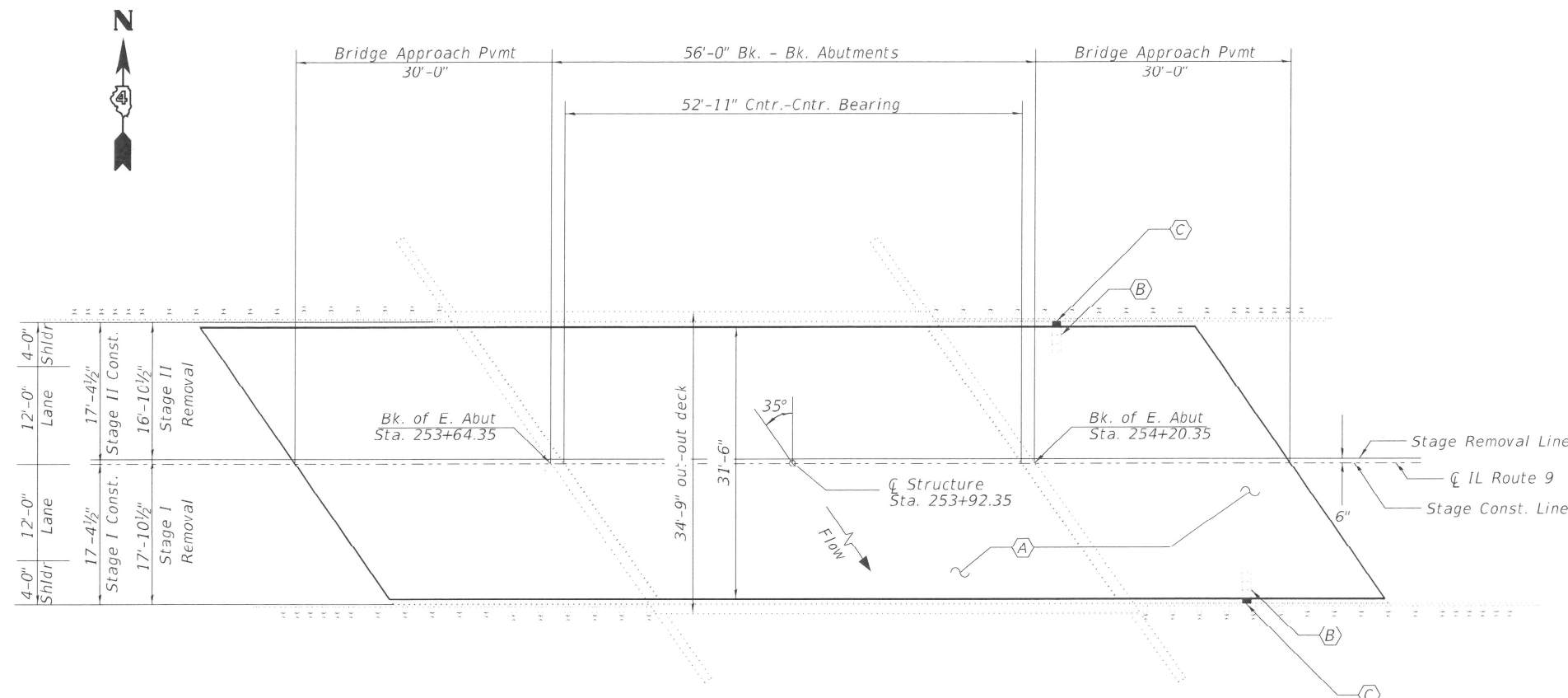
1. Set up Traffic Control with Drums.
2. Perform Deck Slab Repairs as needed, Adjust Inlets, and Repair Concrete Curb.
3. Perform Bridge Deck Scarification, 3/4"
4. Place Deck Microsilica Concrete Overlay, 2 1/4"
5. Switch Stage and Repeat

**GENERAL NOTES**

Plan dimensions and details relative to existing plans are subject to nominal construction variations. The contractor shall field verify existing dimensions and details affecting new construction and make necessary approved adjustments prior to construction or ordering of materials. Such variation shall not be cause for additional compensation for a change in the scope of work, however. The contractor will be paid for the quantity actually furnished at the unit price bid for work.



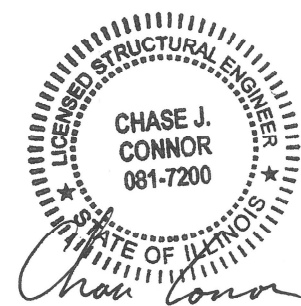
**ELEVATION**



**PLAN**

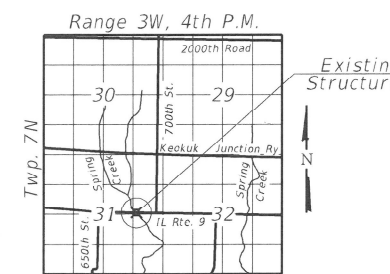
**KEYED NOTES**

- (A) Bridge Deck Scarification 3/4" and 2 1/4" Microsilica Concrete Overlay
- (B) Approach Inlet Gate Adjustment
- (C) Concrete Curb Repair



Date: 1/29/24

CHASE J. CONNOR, P.E., S.E.  
ILLINOIS STRUCTURAL NO. 7200  
EXPIRES: NOVEMBER 30, 2024



**LOCATION SKETCH**

**BRIDGE REPAIRS  
ILLINOIS ROUTE 9  
OVER SPRING CREEK  
MCDONOUGH COUNTY  
STATION 253+92.35  
STRUCTURE NO. 055-0043**

MODEL: \$MODELNAME\$  
FILE NAME: X:\Projects\Current\1192-1063 IDOT D4 W02 PFB206-30 Various Bridges Preservation\CGN\68H25\055-0043\0550043-01-gpe.dgn

**HR** Hurst-Rosche, Inc.  
PROFESSIONAL DESIGN NUMBER: 194-008291  
1400 E. TREMONT ST.  
HILLSBORO, IL  
PH: 217-532-3959  
JOB NO. 192-1063

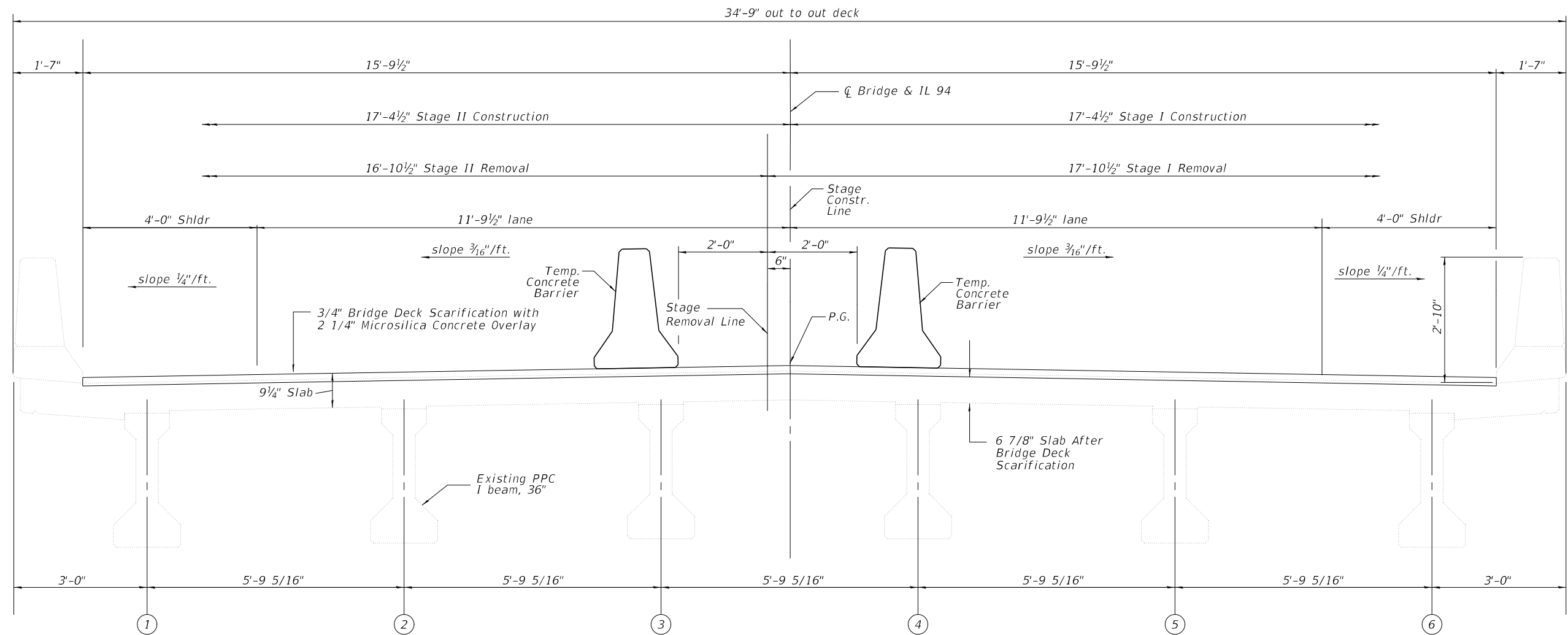
USER NAME =	DESIGNED - JJC	REVISED
PLOT SCALE =	CHECKED - CJC	REVISED -
PLOT DATE =	DRAWN - AE	REVISED -
	CHECKED - CJC	REVISED -

**STATE OF ILLINOIS  
DEPARTMENT OF TRANSPORTATION**

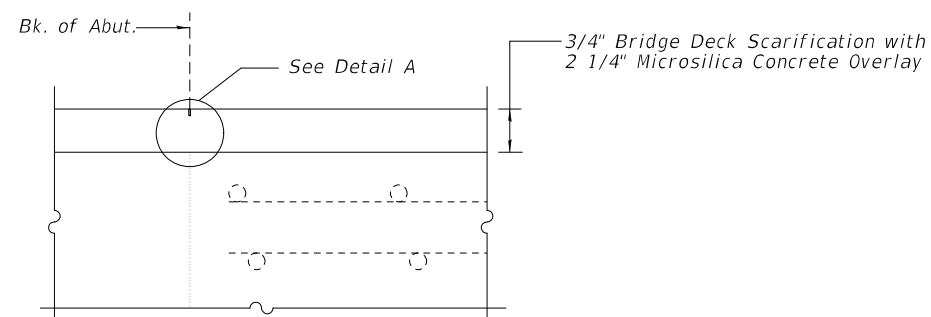
**GENERAL PLAN & ELEVATION  
STRUCTURE NO. 055-0043**

SHEET 1 OF 3 SHEETS

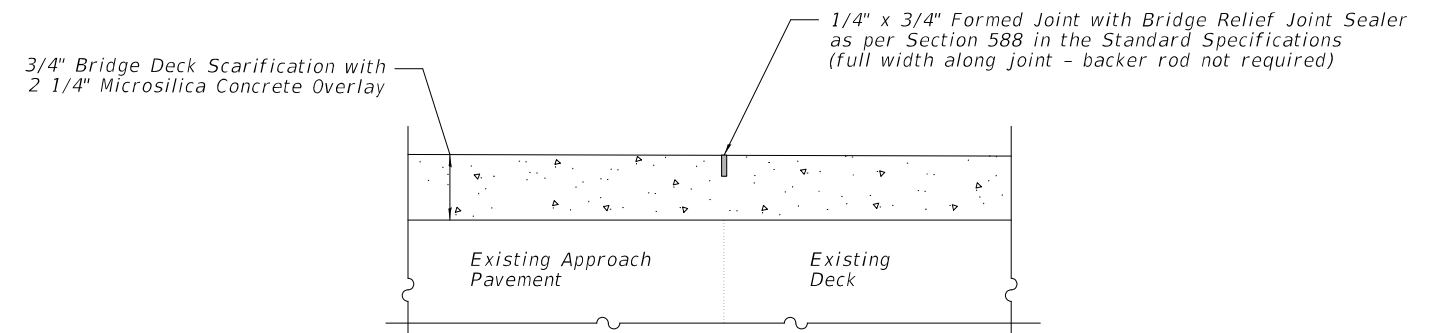
F.A. RTE. 685	SECTION 119B BR-2	COUNTY MCDONOUGH	TOTAL SHEETS 31	SHEET NO. 29
CONTRACT NO. 68H25				
ILLINOIS FED. AID PROJECT				



**CROSS SECTION**  
(Looking East)



**SECTION AT ABUTMENT**



**DETAIL A**

MODEL: \$MODELNAME\$.  
FILE NAME: X:\Projects\Current\192-1063 IDOT D4 W02 PTB206-30 Various Bridges Preservation\DCM\68H25055-0043\0550043-02- Cross Section.dgn

**HR**  
Hurst-Rosche, Inc.  
1400 E. TREMONT ST.  
HILLSBORO, IL  
PH: 217.532.3959  
JOB NO. 192-2050

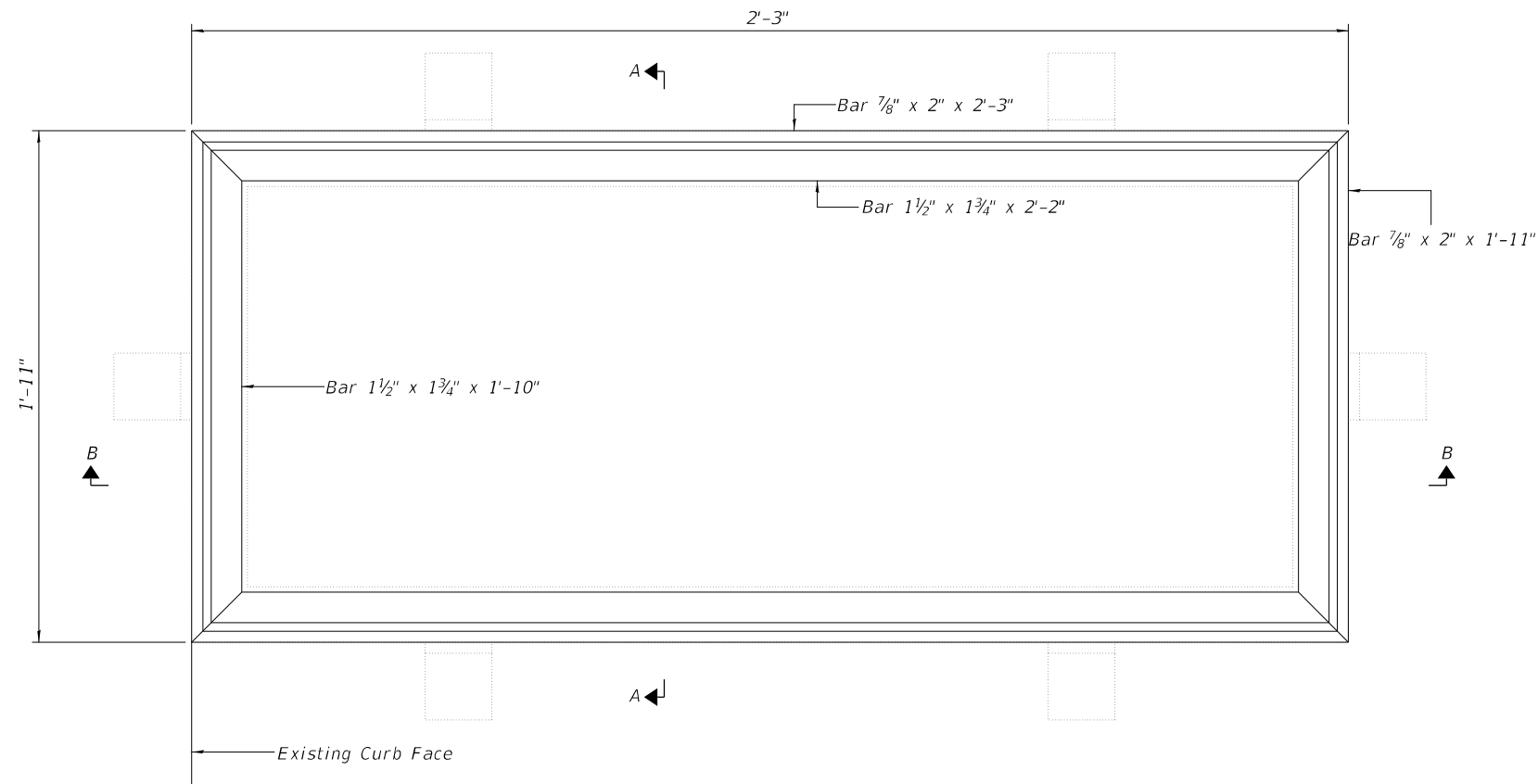
USER NAME =	DESIGNED - JJC	REVISED
	CHECKED - CJC	REVISED -
PLOT SCALE =	DRAWN - AE	REVISED -
PLOT DATE =	CHECKED - JJC	REVISED -

**STATE OF ILLINOIS**  
**DEPARTMENT OF TRANSPORTATION**

**CROSS SECTION**  
**STRUCTURE NO. 055-0043**

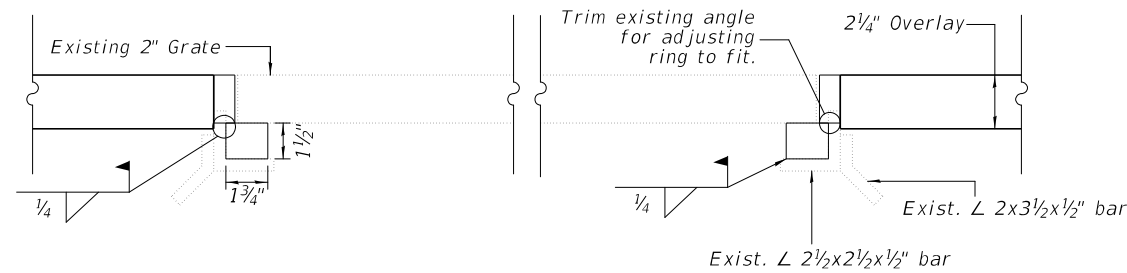
SHEET 2 OF 3 SHEETS

F.A. RTE.	SECTION	COUNTY	TOTAL SHEETS	SHEET NO.
685	119B BR-2	MCDONOUGH	31	30
CONTRACT NO. 68H25				
ILLINOIS FED. AID PROJECT				

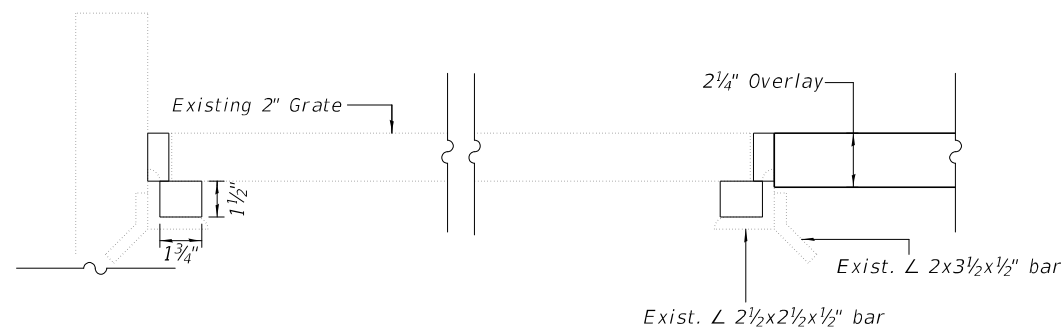


Notes:  
 The contractor shall ensure that no damage is done to existing grates to be reused.  
 Shop plans for proposed adjusting inlet ring shall be submitted for approval prior to fabrication.  
 Cost of all labor and materials necessary to remove existing grates, clean existing inlets, install adjusting inlet rings and reinstalling grates is included in the cost per unit for Inlets to be Adjusted.  
 All structural steel shall conform to AASHTO Classification M-270 Gr. 36.  
 The adjusting inlet ring shall be galvanized.  
 Existing Drain dimensions per IDOT standard 609006.

PLAN



SECTION A-A



SECTION B-B

BILL OF MATERIAL

ITEM	UNIT	TOTAL
Inlets to be Adjusted	Each	2

MODEL: SMODELNAME  
 FILE NAME: X:\Projects\Current\192-1063 IDOT D4 W02 PTB206-30 Various Bridges Preservation\DGN\68H25\055-0043\0550043-03-scupper and inlet adjustment details.dgn

**HR**  
 Hurst-Rosche, Inc.  
 1400 E. TREMONT ST.  
 HILLSBORO, IL  
 PH: 217.532.3959  
 JOB NO. 192-1063

USER NAME =	DESIGNED - JJC	REVISED -
	CHECKED - CJC	REVISED -
PLOT SCALE =	DRAWN - AE	REVISED -
PLOT DATE =	CHECKED - CJC	REVISED -

STATE OF ILLINOIS  
 DEPARTMENT OF TRANSPORTATION

INLET ADJUSTMENT DETAILS  
 S.N. 055-0043

SHEET 3 OF 3 SHEETS

F.A. RTE.	SECTION	COUNTY	TOTAL SHEETS	SHEET NO.
685	119B BR-2	MCDONOUGH	31	31
CONTRACT NO. 68H25				
ILLINOIS FED. AID PROJECT				