

STATE OF ILLINOIS  
DEPARTMENT OF TRANSPORTATION  
DIVISION OF HIGHWAYS

**PROPOSED  
HIGHWAY PLANS**

FAI 74 ROUTE I-74  
SECTION 72(8,9,9-1)LS-15  
PROJECT: LANDSCAPING  
PEORIA COUNTY

C-94-008-24

F.A.I. RTE.	SECTION	COUNTY	TOTAL SHEETS	SHEET NO.
74	72(8,9,9-1)LS-15	PEORIA	17	1
ILLINOIS			CONTRACT NO. 68H89	

INDEX OF SHEETS

- 1 COVER SHEET
- 2 JOB SPECIFIC NOTES & COMMITMENTS / CALENDAR OF LANDSCAPING MAINTENANCE
- 3-4 SUMMARY OF QUANTITIES
- 5-6 SCHEDULE OF QUANTITIES
- 7 OVERALL PLAN
- 8 PLAN SHEET - LAYOUT 1
- 9 PLAN SHEET - LAYOUT 2
- 10 PLAN SHEET - LAYOUT 3
- 11 PLAN SHEET - LAYOUT 4
- 12 PLAN SHEET - LAYOUT 5
- 13 PLAN SHEET - LAYOUT 6
- 14 PLAN SHEET - LAYOUT 7
- 15 PLANTER DETAIL
- 16 TRAFFIC CONTROL PLAN
- 17 HERBICIDE DOSAGE CHART

HIGHWAY STANDARDS

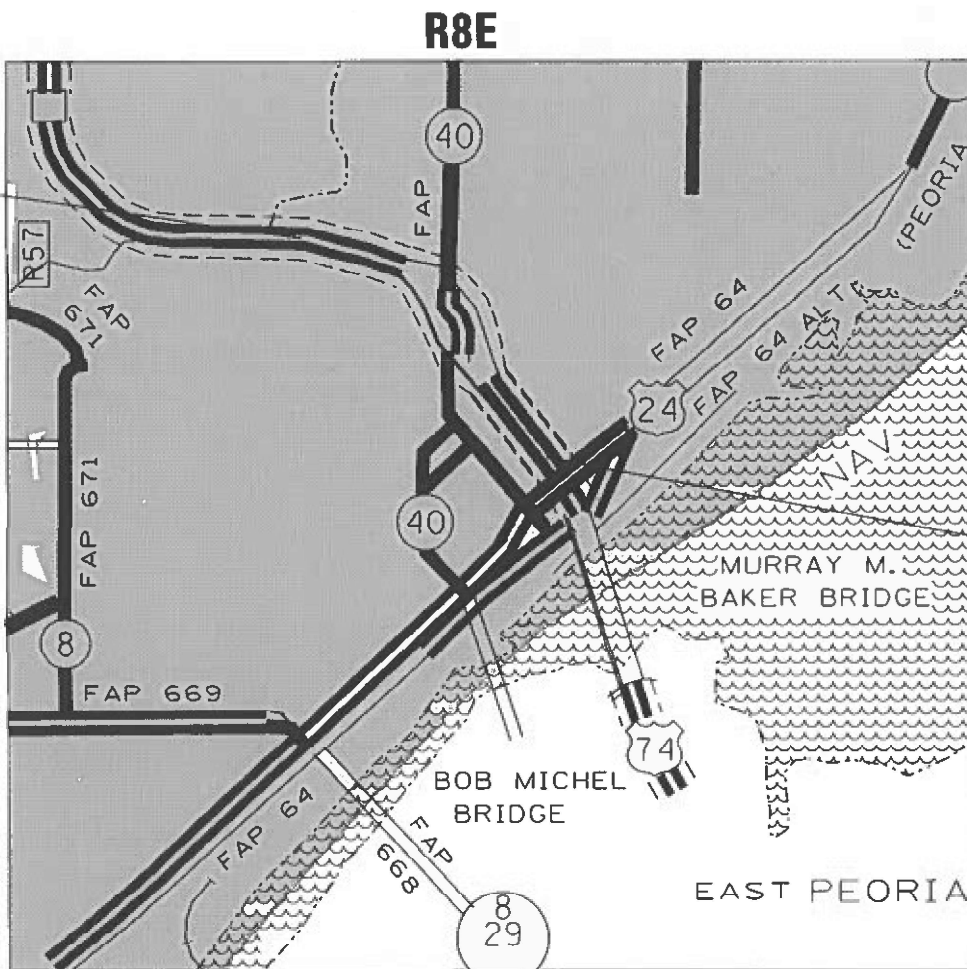
- 701101-05 701301-04
- 701106-02 701456-05
- 701201-05 701901-09

FULL SIZE PLANS HAVE BEEN PREPARED USING STANDARD ENGINEERING SCALES. REDUCED SIZED PLANS WILL NOT CONFORM TO STANDARD SCALES. IN MAKING MEASUREMENTS ON REDUCED PLANS, THE ABOVE SCALES MAY BE USED.

J.U.L.I.E.  
JOINT UTILITY LOCATION INFORMATION FOR EXCAVATION  
1-800-892-0123  
OR 811

PROJECT ENGINEER: BEN TELLEFSON 309-671-3333  
PROJECT MANAGER: BRITTANY GAVIN 309-671-4487

CONTRACT NO. 68H89  
CATALOG NO. 036455-00D



PROJECT BEGINS  
STA. 148+200



T9N

PROJECT ENDS  
STA. 150+400

GROSS LENGTH = 7,286.20 FT. = 1.38 MILE  
NET LENGTH = 7,286.20 FT. = 1.38 MILE

D-94-008-24



LOCATION OF SECTION INDICATED THUS: -

DESCRIPTION OF WORK

THIS PROJECT INVOLVES LANDSCAPING MAINTENANCE ALONG I-74 FROM ELLIS TO THE ILLINOIS RIVER IN PEORIA.

STATE OF ILLINOIS  
DEPARTMENT OF TRANSPORTATION

SUBMITTED December 20 2023  
Renee A. Darnell, Inc.  
REGIONAL ENGINEER

February 2, 2024  
Scott A. Etkin  
ENGINEER OF DESIGN AND ENVIRONMENT

February 2, 2024  
Stephen McAnis  
DIRECTOR OF HIGHWAYS PROJECT IMPLEMENTATION

PRINTED BY THE AUTHORITY  
OF THE STATE OF ILLINOIS

# JOB SPECIFIC NOTES

The contractor will be responsible for field verification of locations for all landscaping items. Numbers indicated on the layouts are an estimate and do not reflect the exact total.

The removal of dead underbrush, debris, litter, and other miscellaneous items shall be completed and will be considered included in the cost of the associated pay items.

**SELECTIVE CLEARING** shall include removal of naturally occurring logs, shrubs, bushes, saplings, weeds, other vegetation and stumps of a diameter less than 6 in. at locations specified by the Roadside Manager. All work will be done in accordance with the special provisions. All costs for removing living and dead plants shall be included in the pay item **SELECTIVE CLEARING**.

**PERENNIAL PLANT CARE** shall include weeding and edging of the perennial beds. The cost for edging and weeding shall be included in the pay item for **PERENNIAL PLANT CARE**.

**SHRUB CARE** shall include weeding and pruning of shrubs from access control fence debris removal and disposal, insect control, pruning, edging, volunteer trees and other plant care work items for each work cycle as described in the special provisions and as directed by the Roadside Manager. Payment will only be done at locations in which shrubs are actually pruned and trimmed or have been maintained. Where shrub care is not needed, mulching work shall be paid for at that location per section 109.04.

All vegetation should be trimmed 12" from all access control fences. The cost shall be included in the pay item **SHRUB CARE**.

**TREE CARE** shall include weeding, debris removal and disposal, insect control, pruning, edging, and other plant care work items for each work cycle as described in the special provisions and as directed by the Roadside Manager. Where pruning is not needed, mulching work shall be paid for at that location per section 109.04.

**MOWING (SPECIAL)** shall include trimming along walls and foundations. The cost for trimming shall be included in the cost of **MOWING (SPECIAL)**.

Trees, shrubs and perennial plants shall not encroach upon the sidewalks and gutters. The cost to trim these items will be included in the cost of the associated pay items.

## PERENNIAL PLANTS

There are several planters along Perry, Monroe, Madison, and Jefferson Streets. The planters in these locations will be filled with plantings listed on the table in the Schedule of Quantities. All weeding and dirt required for these planters shall be included in the pay item for the plants specified.

## WEED CONTROL, BROADLEAF IN TURF NOTES:

1. Contact Roadside Manager or Operations Roadside Manager prior to commencing spray activities.
2. Spraying must be completed before any other contract activities take place. Two weeks minimum between spraying and planting.
3. Non-working equipment shall be repaired immediately with no additional time allotted to the contractor for repairs.
4. Spray operators shall keep a copy of contract spray locations with them at all times.
5. Wind speed must be < 15 mph in order to perform work.
6. Temperature must be > 45 degrees in order to perform work.
7. Daily inspections by Roadside Manager during the weed spraying operation.

2021 WORK DATES		CONSTRUCTION WORK	ESTABLISHMENT WORK
FROM	TO		
APRIL 1	OCT 31	Mowing	Mow turf areas to a turf height of 3 inches. (Layout 1, 2, 3, 4, 5 &7) All applicable layouts 1-2 times per month at Engineer's discretion
MAY 1	OCT 1	Perennial Plant Care	All applicable layouts 1-2 times per month at Engineer's discretion
MAY 1	MAY 31	Weed Control placed within 5 days of start date	One cycle all layouts
MAY 1	MAY 31	Selective Clearing, Shrub Care, and Tree Care Work cycle must be complete and acceptable on the inspection date of June 1.	1 Time All Layouts

MODEL: Default  
 FILE: Mainfile  
 PROJECT: 68059-CAD-Data-CAD-Drawings-DWG-68059-17-Cover.dwg  
 PROJECT: 68059-CAD-Data-CAD-Drawings-DWG-68059-17-Cover.dwg

USER NAME = christine.evers	DESIGNED -	REVISED -
	DRAWN -	REVISED -
PLOT SCALE = 78.6960 */ in.	CHECKED -	REVISED -
PLOT DATE = 12/21/2023	DATE -	REVISED -

STATE OF ILLINOIS  
DEPARTMENT OF TRANSPORTATION

JOB SPECIFIC NOTES & COMMITMENTS  
CALENDAR OF LANDSCAPING ITEMS

SCALE: SHEET OF SHEETS STA. TO STA.

F.A.I. RTE.	SECTION	COUNTY	TOTAL SHEETS	SHEET NO.
74	72(8,9,9-1)LS-15	PEORIA	17	2
CONTRACT NO. 68H89			ILLINOIS FED. AID PROJECT	







PERENNIAL PLANT CARE				LOCATION							
KEY	ITEM	COMMON NAME	UNIT	L1	L2	L3	L4	L5	L6	L7	TOTAL
<b>TREES</b>											
<b>DECIDUOUS TREES</b>											
GD	GYMNOCLADUS DIOICUS	KENTUCKY COFFE TREE	EACH	0	0	4	0	7	0	0	11
QA	QUERCOUS BICOLOR	SWAMP OAK	EACH	0	0	15	4	1	4	25	49
AN	ACER NIGRUM	BLACK MAPLE	EACH	0	0	3	0	0	0	0	3
GB	GINKO BILOBA	GINKO	EACH	0	0	7	0	0	0	2	9
GT	GLEDITSIA TRIACANTHOS	SKYLINE THORNLESS HONEYLOCUST	EACH	0	0	0	2	0	4	0	6
UR	ULMUS REGAL	REGAL ELM	EACH	0	0	10	0	0	0	13	23
PH	PN PINUS HELDREICHII	COMMON GEM	EACH	0	0	0	0	5	0	0	5
AN	ACER NIGRA	BLACK MAPLE	EACH	0	0	3	0	0	0	0	3
<b>ORNAMENTAL TREES</b>											
AC	AMELANCHIER X GRANDIFLORA	AMELIER X GRANDIFLORA	EACH	0	0	0	2	1	0	3	6
SA	SYRINGA RETICULATA	SYRINGA RETICULATA	EACH	0	0	18	0	0	0	0	18
SP	SYRINGA PEKINENSIS	SYRINGA PEKINENSIS	EACH	0	0	0	0	7	16	0	23
MP	MALAS PRAIRIFIRE	PRAIRIFIRE CRABAPPLE	EACH	0	0	7	3	0	3	0	13
CF	CORNUS FLORIDA	FLOWERING DOGWOOD	EACH	0	0	0	0	5	0	0	5
<b>EVERGREEN TREES</b>											
PN	PINUS NIGRA	AUSTRIAN PINE	EACH	0	0	13	0	6	3	6	28
<b>TOTAL TREE CARE</b>			<b>EACH</b>	<b>0</b>	<b>0</b>	<b>80</b>	<b>11</b>	<b>32</b>	<b>30</b>	<b>49</b>	<b>202</b>
<b>SHRUBS</b>											
HA	HYDRANGEA ARBORESCENS ANNABELLE	ANNABELLE SMOOTH HYDRANGEA	EACH	0	0	11	0	0	0	0	11
FS	FORSYTHIA NORTHERN SUN	NORTHERN SUN BORDER FORSYTHIA	EACH	0	0	90	0	0	165	190	445
HV	HAMAMELIS VERNALIS SUCKERS	VERNAL WITCH HAZEL 12' TO 36' TALL	EACH	0	0	100	0	0	0	0	100
PA	PEROVSKIA ATRIPLICIFOLIA	PEROVSKIA ATRIPLICIFOLIA	EACH	0	0	290	200	0	0	0	490
RA	RHUS AROMATICA	FRAGRANT SUMAC	EACH	0	0	545	0	40	70	500	1155
RG	RHUS GLABRA	SMOOTH SUMAC	EACH	0	0	75	0	0	0	0	75
SPA	SYRINGA PATULA MISS KIM	MISS KIM MANCHURIAN LILAC	EACH	0	0	200	180	60	0	90	530
RS	RHODOTYPOS SCANDENS	BLACK JETHEAD	EACH	0	0	525	3	9	34	0	571
RH	ROBINIA HISPIDA	BRISTLY LOCUST	EACH	0	0	0	0	0	0	0	0
RRC**	ROSA	ROSE	EACH	0	0	0	0	34	0	70	104
AA	ARONIA ARBUTIFLORIA	RED CHOKEBERRY	EACH	0	0	0	0	0	10	10	20
HP	HYDRANGEA PANICULATA	HYDRANGA LIMELIGHT	EACH	0	0	0	50	15	0	30	95
<b>EVERGREEN SHRUBS</b>											
JH*	JUNIPERUS HORIZONTALIS HUGHES	HUGHES CREEPING JUNIPER	EACH	0	0	0	40	108	295	50	493
JC	JUNIPERUS CHINENSIS	KALLAYS COMPACTA	EACH	0	0	110	230	80	120	20	560
<b>TOTAL SHRUB CARE</b>			<b>EACH</b>	<b>0</b>	<b>0</b>	<b>1946</b>	<b>703</b>	<b>346</b>	<b>694</b>	<b>960</b>	<b>4649</b>
<b>PERENNIAL PLANT CARE</b>											
PPC	<b>TOTAL PERENNIAL PLANT CARE</b>		<b>SQ YD</b>	<b>3487</b>	<b>512</b>	<b>1477</b>	<b>1760</b>	<b>251</b>	<b>0</b>	<b>707</b>	<b>8194</b>

**LEGEND:**  
L1 LANDSCAPE LAYOUT-1  
L2 LANDSCAPE LAYOUT-2  
L3 LANDSCAPE LAYOUT-3  
L4 LANDSCAPE LAYOUT-4  
L5 LANDSCAPE LAYOUT-5  
L6 LANDSCAPE LAYOUT-6  
L7 LANDSCAPE LAYOUT-7

**\* JUNIPERUS HORIZONTALIS shall have volunteer growth pulled during the Sprng and Fall. Cost to remove volunteer growth will not be paid separately, but will be included in the cost of SHRUB CARE.**

**\*\* ALL RRC EACH ITEMS ARE COUNTED AS PERENNIAL PLANT CARE AND REFLECTED IN PPC SQ YD AND WILL NOT BE PAID SEPARATLY AS SHURB CARE.**

MODEL: Default  
FILE: \\malfp-pw-bentley.com\P\DOT\Documents\DOT Office\Dir\rdt\_4\Project\104\_6859\CADD\DWG\CAD\Sheet\10468H89-INT-cover.dgn

USER NAME = christine.evers	DESIGNED -	REVISED -	<b>STATE OF ILLINOIS DEPARTMENT OF TRANSPORTATION</b>	<b>SCHEDULE OF QUANTITIES</b>				F.A.I. RTE.	SECTION	COUNTY	TOTAL SHEETS	SHEET NO.
DRAWN -	REVISED -	74						72(8,9-1)LS-15	PEORIA	17	5	
PLOT SCALE = 78.6960' / in.	CHECKED -	REVISED -		SCALE: SHEET OF SHEETS STA. TO STA.				CONTRACT NO. 68H89				
PLOT DATE = 12/21/2023	DATE -	REVISED -						ILLINOIS FED. AID PROJECT				

MOBILIZATION (67100100)		
LOCATION	UNIT	QTY
JOBSITE	L. SUM	1
<b>TOTAL</b>		<b>1</b>

TREE CARE (K0026700)	
	EACH
LAYOUT 1	0.00
LAYOUT 2	0.00
LAYOUT 3	80.00
LAYOUT 4	11.00
LAYOUT 5	32.00
LAYOUT 6	30.00
LAYOUT 7	49.00
<b>TOTAL</b>	<b>202.00</b>

SHRUB CARE (K0026810)	
	EACH
LAYOUT 1	0.00
LAYOUT 2	0.00
LAYOUT 3	1946.00
LAYOUT 4	703.00
LAYOUT 5	346.00
LAYOUT 6	694.00
LAYOUT 7	960.00
<b>TOTAL</b>	<b>4649.00</b>

PERENNIAL PLANT CARE (K0026850)	
	SQ YD
LAYOUT 1	3487.00
LAYOUT 2	512.00
LAYOUT 3	1477.00
LAYOUT 4	1760.00
LAYOUT 5	251.00
LAYOUT 6	0.00
LAYOUT 7	707.00
<b>TOTAL</b>	<b>8194.00</b>

TRAFFIC CONTROL AND PROTECTION (SPECIAL) (X7010216)		
LOCATION	UNIT	QTY
JOBSITE	L. SUM	1
<b>TOTAL</b>		<b>1</b>

NEW PLANTINGS		LOCATION								
ITEM		L1	L2	L3	L4	L5	L6	L7	TOTAL	
NEW TREES TO BE PLANTED										
JUNIPERUS SCOPULORUM "MOONGLOW JUNIPER"	EACH	0	0	0	7	0	0	0	7	
AMELANCHIER X GRANDIFLORA "COLE'S SELECT SERVICEBERRY"	EACH	0	0	0	1	0	0	0	1	
SARGENT CRABAPPLE "MALUS SARGENTII"	EACH	0	0	0	3	0	0	0	3	
<b>TOTAL</b>	<b>EACH</b>	<b>0</b>	<b>0</b>	<b>0</b>	<b>11</b>	<b>0</b>	<b>0</b>	<b>0</b>	<b>11</b>	
NEW PLANTS TO BE PLANTED										
PERENNIAL PLANTS, ORNAMENTAL TYPE, GALLON POT										
LIROPE VARIEGATA	EACH	0	0	0	50	0	0	0	50	0.5
GERANIUM "ROZANNE" HARDY GERANIUM	EACH	0	0	0	0	0	0	50	50	0.5
LAVANDULA ANGUSTIFOLIA "ENGLISH LAVENDER"	EACH	0	0	0	0	0	0	25	25	0.25
BAPTISIA "WILD WHITE INDIGO"	EACH	0	0	0	0	0	0	11	11	0.11
ROSA ROSE	EACH	0	0	0	0	0	0	5	5	0.05
MISCANTHUS SINENSIS "MORNING LIGHT"	EACH	0	0	0	0	0	0	10	10	0.1
CANNA FROM PLANTER BOX	EACH	0	0	0	0	2	4	2	8	0.08
<b>TOTAL</b>	<b>EACH</b>	<b>0</b>	<b>0</b>	<b>0</b>	<b>50</b>	<b>2</b>	<b>4</b>	<b>103</b>	<b>159</b>	<b>1.59 UNITS</b>
PERENNIAL PLANTS, ORNAMENTAL TYPE, 4" POT										
4" ANNUAL POT PLANTS*	EACH	0	0	50	0	0	0	0	50	0.5
PLANTER BOX PLANTS										
PURPLE SWIFT POTATO VINE (2 EACH PLANTER)	EACH	0	0	0	0	4	8	4	16	0.16
DRACAENA SPIKE GREEN (3 EACH PLANTER)	EACH	0	0	0	0	6	12	6	24	0.24
MANDEVILLA VINE (RED) (5 EACH PLANTER)	EACH	0	0	0	0	10	20	10	40	0.4
LANTANA (MULTI COLOR) (5 EACH PLANTER)	EACH	0	0	0	0	10	20	10	40	0.4
CANNA "AUSTRALIA" (PURPLE) (1 EACH PLANTER) PAID AS GALLON POT	EACH	GALLON POT - SEE PERENNIAL PLANTS, ORNAMENTAL TYPE, GALLON POT								
<b>TOTAL</b>	<b>EACH</b>	<b>0</b>	<b>0</b>	<b>50</b>	<b>0</b>	<b>30</b>	<b>60</b>	<b>30</b>	<b>170</b>	<b>1.7 UNITS</b>

\* TO BE APPROVED BY ROADSIDE MANAGER

MULCH (K1003680)	Area (SQ YD)	Layout					
		2	3	4	5	6	7
Location	(SQ YD)	(SQ YD)	(SQ YD)	(SQ YD)	(SQ YD)	(SQ YD)	(SQ YD)
Eastbound Total	7805.92	96.89	949.77	1322.78	1100.49	1273.30	3062.69
Westbound Total	13079.03	645.37	6618.37	2516.00	801.86	1116.88	1380.54
<b>Total</b>	<b>20884.95</b>	<b>742.26</b>	<b>7568.15</b>	<b>3838.78</b>	<b>1902.36</b>	<b>2390.17</b>	<b>4443.23</b>

PLANT WATERING (K1004539)	
LOCATION	GALLON
JOBSITE	6000
<b>TOTAL</b>	<b>6000</b>
<b>TOTAL</b>	<b>6 UNITS</b>

1 UNIT = 1000 Gallons

WEED CONTROL, BROADLEAF IN TURF (K0029618)		
LOCATION	UNIT	QTY
JOBSITE	GALLON	0.1
<b>TOTAL</b>		<b>0.1</b>

WEED CONTROL, PRE-EMERGENT GRANULAR HERBICIDE (K0029634)		
LOCATION	UNIT	QTY
JOBSITE	POUND	900
<b>TOTAL</b>		<b>900</b>

Perennial Plant Care Work Schedule	
One full cycle of work, as directed by specifications, for each listed month is required for all Layouts	April
	May
	June
	July
	August
	September
	October

Mowing Work Schedule		
1-2 Mowings (at discretion of Engineer) are required per listed month, for all layouts	MONTH	QTY
	May	2
	June	2
	July	2
	August	1
	September	1
	October	1

MOWING (SPECIAL) (X2503110)		
LOCATION	SQ FT	ACRES
LAYOUT 1	17658.68	0.73
LAYOUT 2	46255.5	0.83
LAYOUT 3	102282.3	2.34
LAYOUT 4	49961.9	1.16
LAYOUT 5	40964.5	0.94
LAYOUT 6	0	0
LAYOUT 7	72656.8	1.66
<b>TOTAL</b>		<b>7.7</b>

Total for contract = 69 Acres (9 mowings per contract)

Selective Clearing (Z0064600)	
	SQ YD
LAYOUT 1	0.00
LAYOUT 2	0.00
LAYOUT 3	0.00
LAYOUT 4	79.00
LAYOUT 5	0.00
LAYOUT 6	0.00
LAYOUT 7	0.00
<b>TOTAL</b>	<b>79 SQ YD</b>
<b>TOTAL</b>	<b>0.02 ACRES</b>

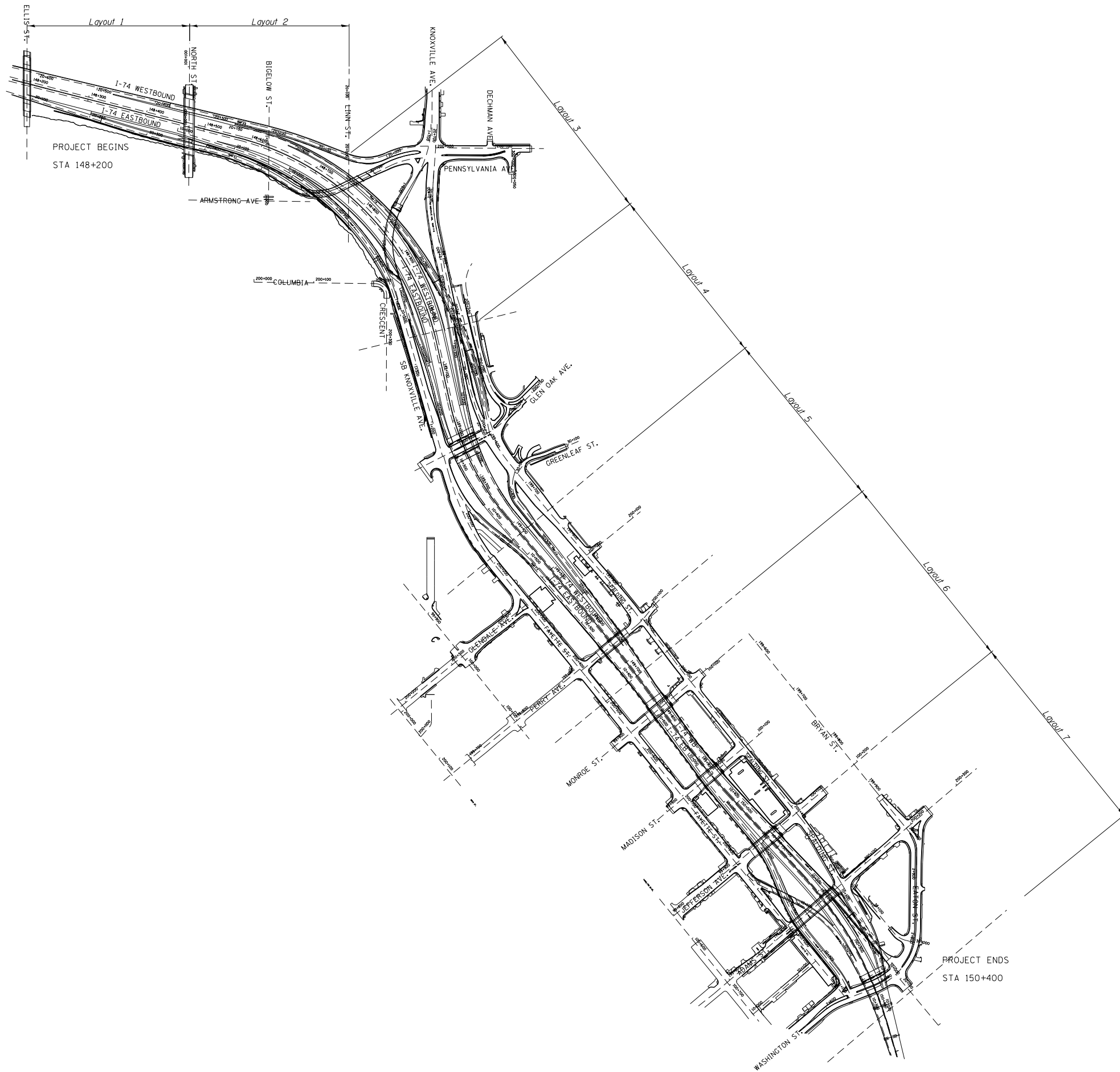
MODEL: Default FILE: Mainfile.plt USER: christine.evers

USER NAME = christine.evers	DESIGNED -	REVISED -
PLOT SCALE = 78.6960' / in.	DRAWN -	REVISED -
PLOT DATE = 12/21/2023	CHECKED -	REVISED -
	DATE -	REVISED -

STATE OF ILLINOIS  
DEPARTMENT OF TRANSPORTATION

SCHEDULE OF QUANTITIES			
SCALE:	SHEET	OF	SHEETS

F.A.I. RTE.	SECTION	COUNTY	TOTAL SHEETS	SHEET NO.
74	72(8,9,9-1)L5-15	PEORIA	17	6
CONTRACT NO. 68H89				
ILLINOIS FED. AID PROJECT				



MODEL: Default  
 FILE NAME: p:\ultra-cw-bentley.com\FWIDOT\Documents\DOT Office\District\_4\Project\ID4\_6859\CADD\Drawings\CAD\Sheets\I468H89-nt-cover.dgn

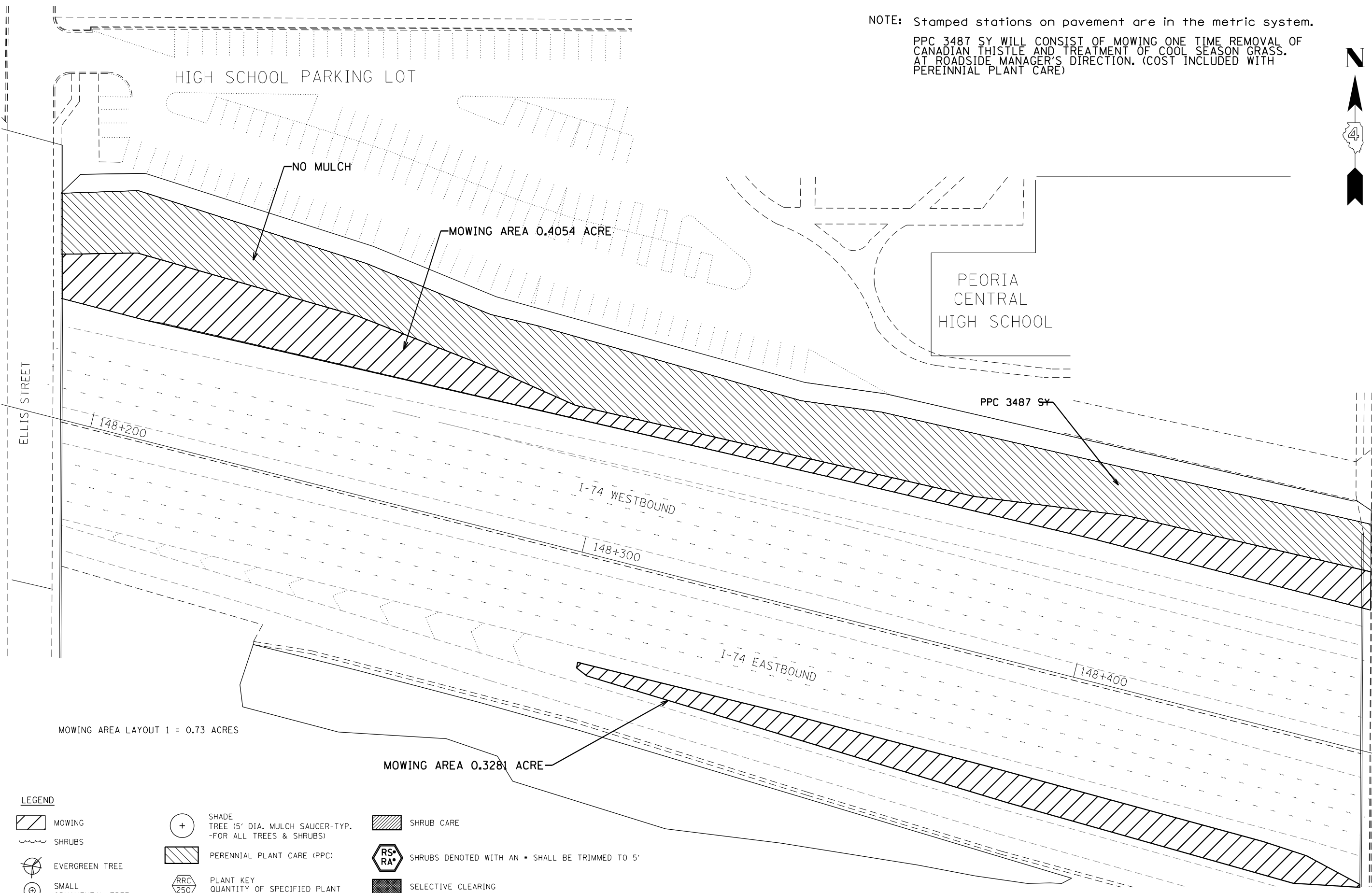
USER NAME = christine.evers	DESIGNED -	REVISED -
	DRAWN -	REVISED -
PLOT SCALE = 78.6960 * / in.	CHECKED -	REVISED -
PLOT DATE = 12/21/2023	DATE -	REVISED -

**STATE OF ILLINOIS**  
**DEPARTMENT OF TRANSPORTATION**

<b>OVERALL PLAN</b>				
SCALE:	SHEET	OF	SHEETS	STA. TO STA.

F.A.I. RTE.	SECTION	COUNTY	TOTAL SHEETS	SHEET NO.
74	72(8,9,9-1)LS-15	PEORIA	17	7
CONTRACT NO. 68H89				
ILLINOIS FED. AID PROJECT				

NOTE: Stamped stations on pavement are in the metric system.  
 PPC 3487 SY WILL CONSIST OF MOWING ONE TIME REMOVAL OF CANADIAN THISTLE AND TREATMENT OF COOL SEASON GRASS. AT ROADSIDE MANAGER'S DIRECTION. (COST INCLUDED WITH PERENNIAL PLANT CARE)



**LEGEND**

- MOWING
- SHRUBS
- EVERGREEN TREE
- SMALL ORNAMENTAL TREE
- SHADE TREE (5' DIA. MULCH SAUCER-TYP. -FOR ALL TREES & SHRUBS)
- PERENNIAL PLANT CARE (PPC)
- PLANT KEY QUANTITY OF SPECIFIED PLANT
- SHRUB CARE
- SHRUBS DENOTED WITH AN • SHALL BE TRIMMED TO 5'
- SELECTIVE CLEARING

MODEL: Default  
 FILE NAME: p:\projects\paw\_bentley.com\p1\INDOT\Documents\INDOT\_offices\Director\_d\projects\ID4\_68559\CADD\Drawings\CAD\papers\148H89-17-cover.dgn

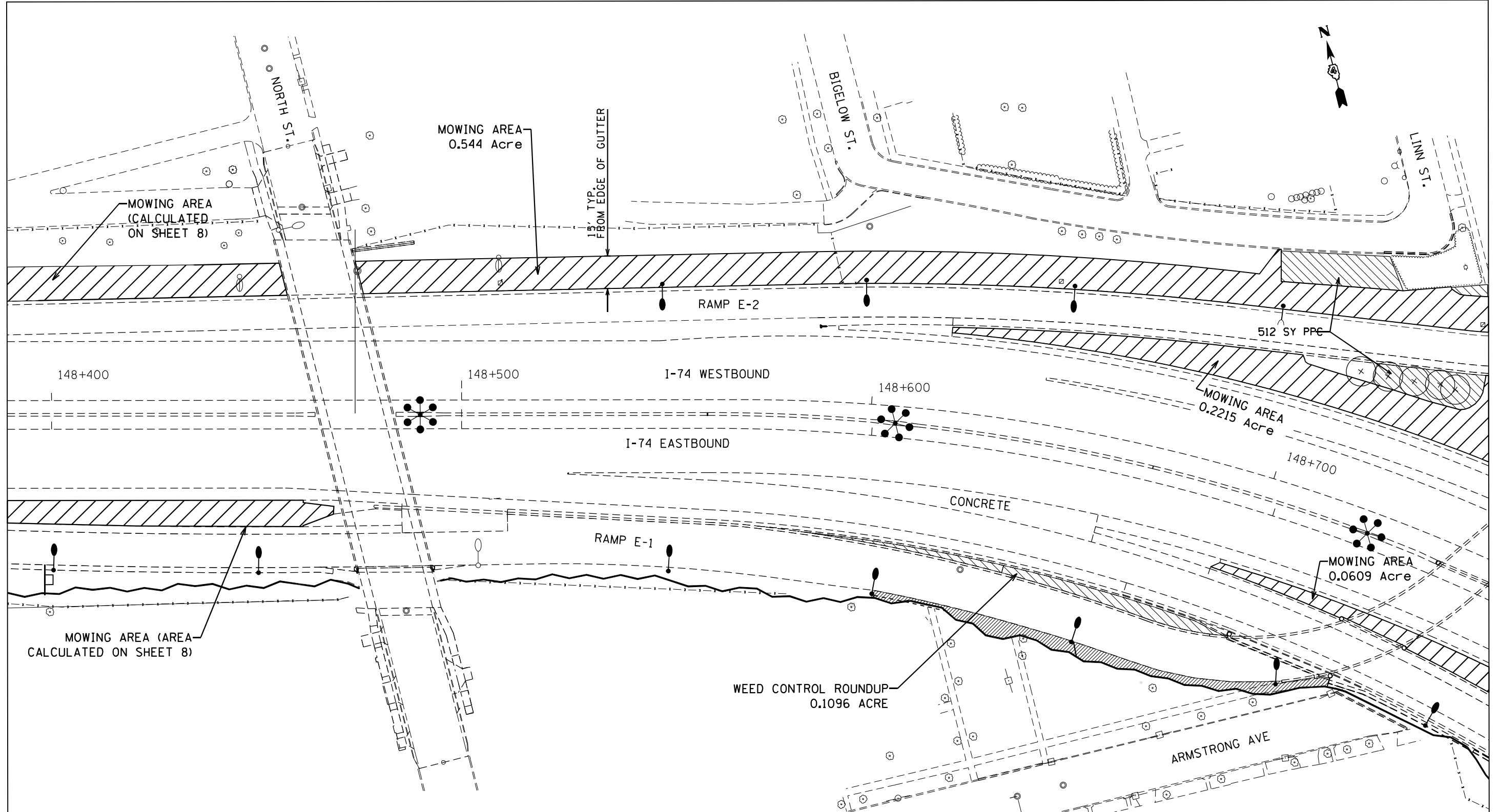
USER NAME = christine.evers	DESIGNED -	REVISED -	
	DRAWN -	REVISED -	
PLOT SCALE = 78,6960' = 1" / in.	CHECKED -	REVISED -	
PLOT DATE = 12/21/2023	DATE -	REVISED -	

**STATE OF ILLINOIS  
DEPARTMENT OF TRANSPORTATION**

**PLAN SHEET - LAYOUT 1**

SCALE: SHEET OF SHEETS STA. TO STA.

F.A.I. RTE.	SECTION	COUNTY	TOTAL SHEETS	SHEET NO.
74	72(8,9,9-1)LS-15	PEORIA	17	8
CONTRACT NO. 68H89				
ILLINOIS FED. AID PROJECT				



**LEGEND**

- MOWING
- SHRUBS
- EVERGREEN TREE
- SMALL ORNAMENTAL TREE
- SHADE TREE (5' DIA. MULCH SAUCER-TYP. -FOR ALL TREES & SHRUBS)
- PERENNIAL PLANT CARE (PPC)
- PLANT KEY QUANTITY OF SPECIFIED PLANT
- SHRUB CARE
- SHRUBS DENOTED WITH AN \* SHALL BE TRIMMED TO 5'
- SELECTIVE CLEARING

**MOWING AREA LAYOUT 2 = 0.83 ACRES**  
**WEED CONTROL ROUND UP = 0.11 ACRES**

MODEL: Default  
 FILE NAME: p:\projects\aw\_bentley.com\p\INDOT\Documents\INDOT Office\Drawings\68059\CADD\Drawings\CAD\Sheets\68H89-9-1\cover.dgn  
 PROJECT: 68059\CADD\Drawings\CAD\Sheets\68H89-9-1\cover.dgn

USER NAME = christine.evers	DESIGNED -	REVISED -
PLOT SCALE = 78,6960' / in.	DRAWN -	REVISED -
PLOT DATE = 12/21/2023	CHECKED -	REVISED -
	DATE -	REVISED -

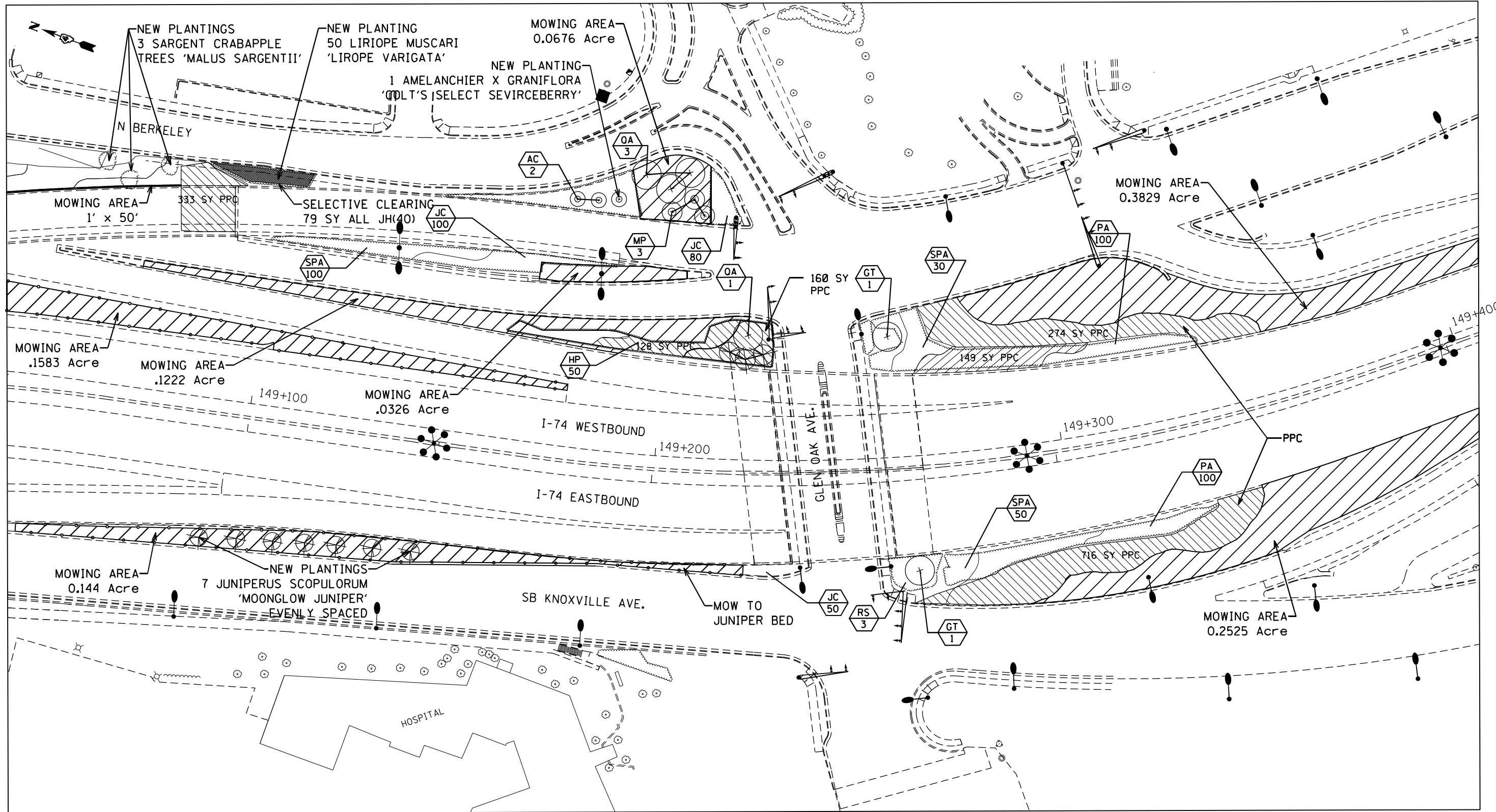
**STATE OF ILLINOIS**  
**DEPARTMENT OF TRANSPORTATION**

**PLAN SHEET - LAYOUT 2**

SCALE: SHEET OF SHEETS STA. TO STA.

F.A.I. RTE.	SECTION	COUNTY	TOTAL SHEETS	SHEET NO.
74	72(8,9,9-1)LS-15	PEORIA	17	9
CONTRACT NO. 68H89				
ILLINOIS FED. AID PROJECT				





MOWING AREA LAYOUT 4 - 1.16 ACRES

**LEGEND**

MOWING	SHADE TREE (5' DIA. MULCH SAUCER-TYP. -FOR ALL TREES & SHRUBS)	SHRUB CARE
SHRUBS	PERENNIAL PLANT CARE (PPC)	SHRUBS DENOTED WITH AN • SHALL BE TRIMMED TO 5'
EVERGREEN TREE	PLANT KEY QUANTITY OF SPECIFIED PLANT	SELECTIVE CLEARING
SMALL ORNAMENTAL TREE		

MODEL: Default  
 FILE NAME: p:\projects\68889\68889.dwg  
 PROJECT: I-74 Westbound  
 SHEET: 11 of 17  
 DATE: 12/21/2023

USER NAME = christine.evers	DESIGNED -	REVISED -
PLOT SCALE = 78,6960' / in.	DRAWN -	REVISED -
PLOT DATE = 12/21/2023	CHECKED -	REVISED -
	DATE -	REVISED -

**STATE OF ILLINOIS  
DEPARTMENT OF TRANSPORTATION**

**PLAN SHEET - LAYOUT 4**

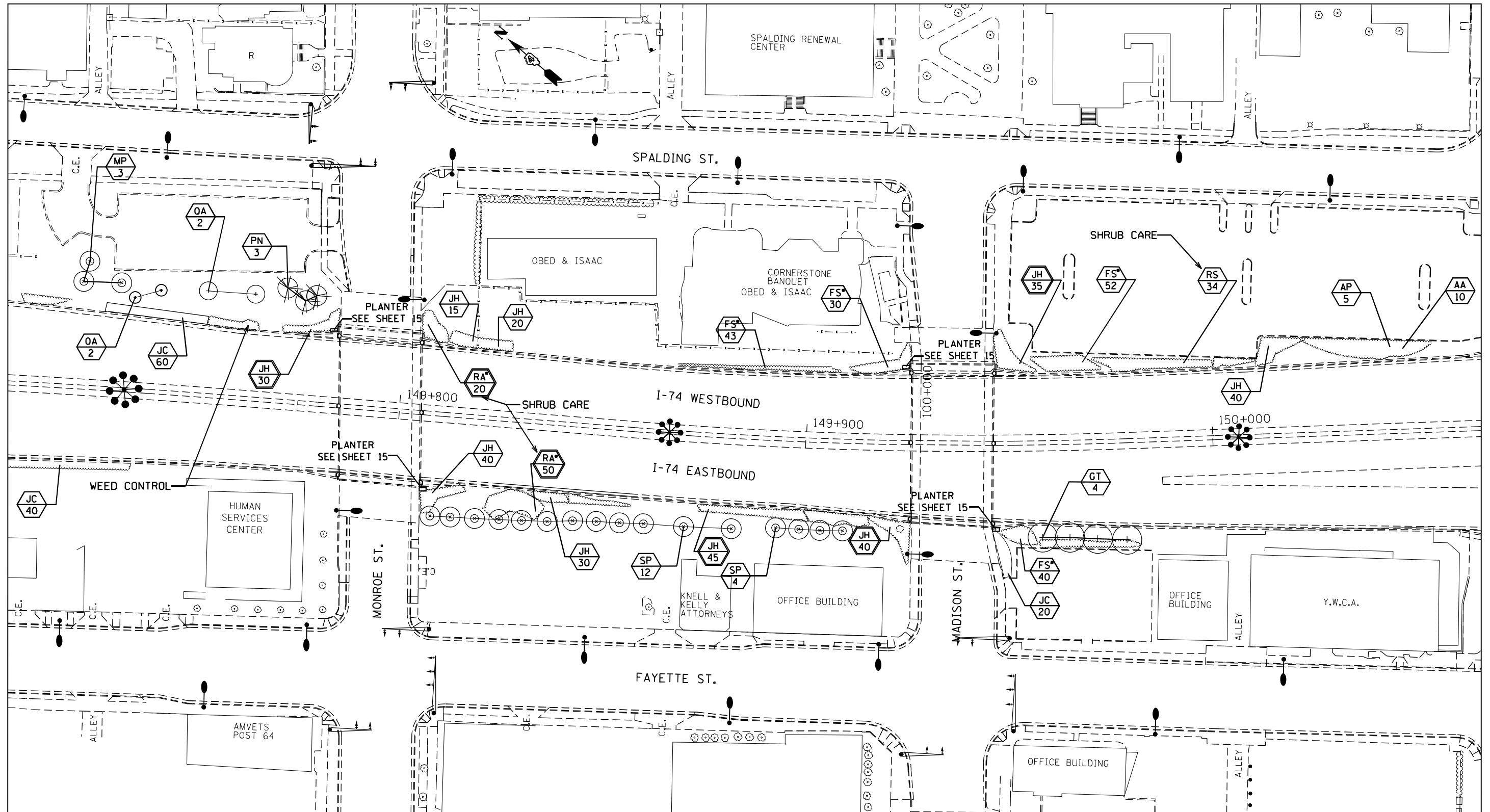
SCALE: SHEET OF SHEETS STA. TO STA.

F.A.I. RTE.	SECTION	COUNTY	TOTAL SHEETS	SHEET NO.
74	72(8,9,9-1)LS-15	PEORIA	17	11
CONTRACT NO. 68H89				
ILLINOIS FED. AID PROJECT				









LEGEND

- MOWING
- SHRUBS
- EVERGREEN TREE
- SMALL ORNAMENTAL TREE
- SHADE TREE (5' DIA. MULCH SAUCER-TYP. -FOR ALL TREES & SHRUBS)
- PERENNIAL PLANT CARE (PPC)
- PLANT KEY QUANTITY OF SPECIFIED PLANT
- SHRUB CARE
- SHRUBS DENOTED WITH AN \* SHALL BE TRIMMED TO 5'
- SELECTIVE CLEARING

MOWING AREA LAYOUT 6 - 0 ACRES

SHRUB CARE FOR BOTH SIDES OF INTERSTATE FOR PLANTS STICKING THROUGH FENCE  
 TRIM ALL FS TO 5' (COST INCLUDED WITH SHRUB CARE)  
 JUNIPER SHRUB BEDS NEED ANY SAPLING TREES HAND PULLED PRIOR TO PRE-EMERGENT.

MODEL: Default  
 FILE: M:\MFG\_Plan\Subsect-pw-bee\mfg.com\PIV\DOT\Documents\1\DOT\_Offices\Director\_A\Project\1\04\_68659\CADD\03a\CAD\Sheets\1\68H89-01-cover.dgn  
 12/21/2023 10:00:00 AM

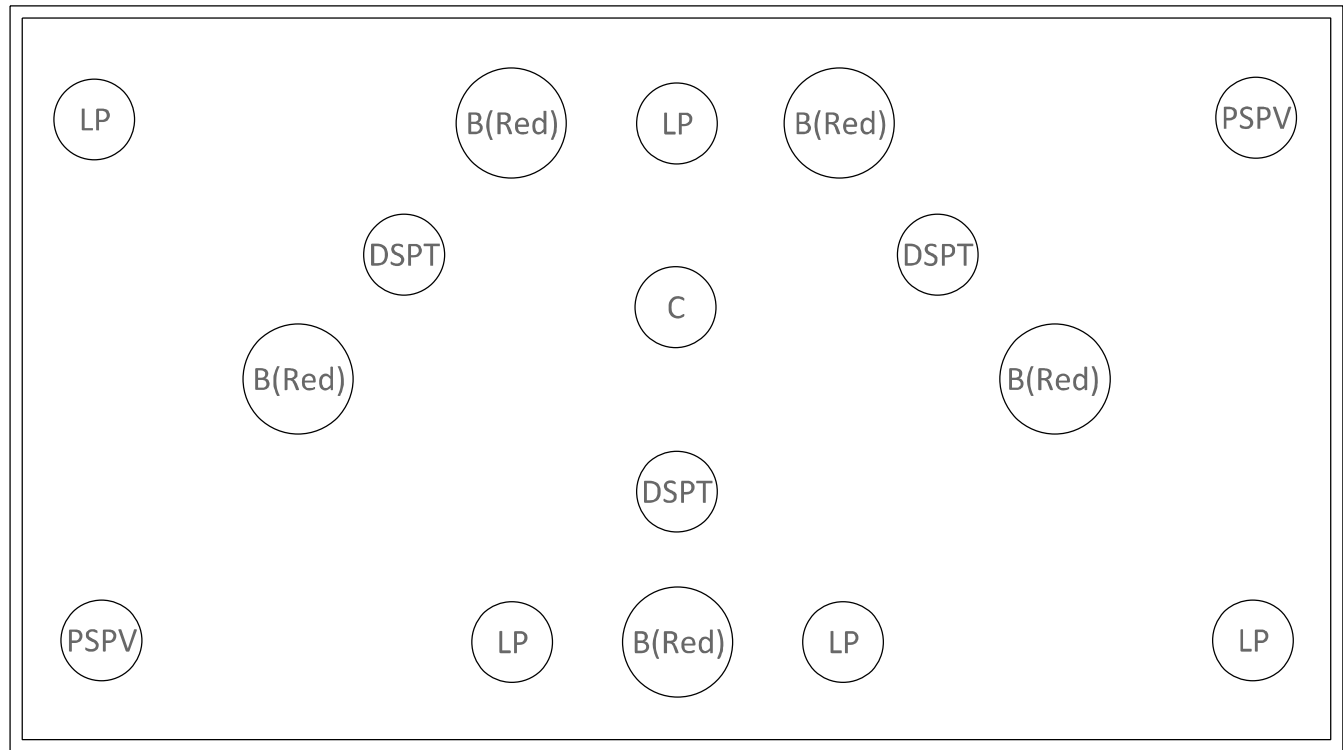
USER NAME = christine.evers	DESIGNED -	REVISED -
PLOT SCALE = 78,6960' / in.	DRAWN -	REVISED -
PLOT DATE = 12/21/2023	CHECKED -	REVISED -
	DATE -	REVISED -

**STATE OF ILLINOIS  
 DEPARTMENT OF TRANSPORTATION**




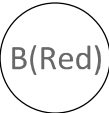
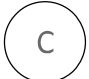
<b>PLAN SHEET - LAYOUT 6</b>	
SCALE:	SHEET OF SHEETS STA. TO STA.

F.A.I. RTE.	SECTION	COUNTY	TOTAL SHEETS	SHEET NO.
74	72(8,9,9-1)LS-15	PEORIA	17	13
CONTRACT NO. 68H89				
ILLINOIS FED. AID PROJECT				





**LEGEND**

- 
Purple Sweet Potato Vine (2 Each Planter)
- 
Dracaena Spike Green (3 Each Planter)
- 
Mandevilla Vine (Red) (5 Each Planter)
- 
Lantana (Multi-Color) (5 Each Planter)
- 
Canna 'Australia' (Purple) (1 Each Planter)

**PLANTER LOCATIONS:**  
**2 at Perry Avenue**  
**2 at Monroe Street**  
**2 at Madison Street**  
**2 at Jefferson Avenue**

MODEL Default  
 FILE NAME: g:\3\illinois\paw\ben\ben.com\paw\DOT\Documents\DOT Offices\District 4\Projects\DI4\_68659\CADData\CAD\Sheets\DI468H89-11c-cover.dgn


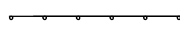

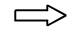
USER NAME = christine.evers	DESIGNED -	REVISED -
	DRAWN -	REVISED -
PLOT SCALE = 78,6960 ' / in.	CHECKED -	REVISED -
PLOT DATE = 12/21/2023	DATE -	REVISED -

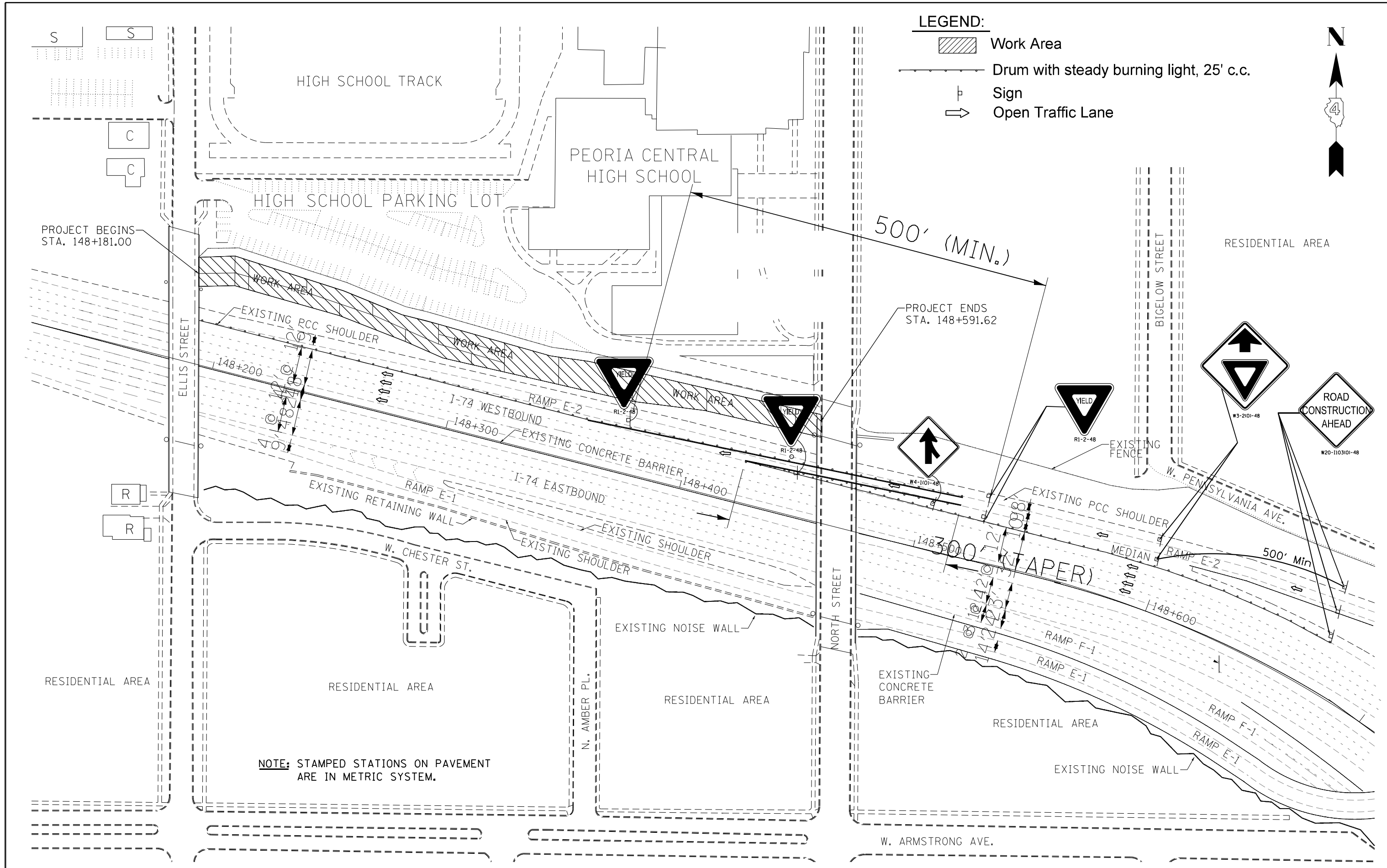
**STATE OF ILLINOIS**  
**DEPARTMENT OF TRANSPORTATION**

<b>PLANTER DETAIL</b>			
SCALE:	SHEET	OF SHEETS	STA. TO STA.

F.A.I. RTE.	SECTION	COUNTY	TOTAL SHEETS	SHEET NO.
74	72(8,9,9-1)LS-15	PEORIA	17	15
CONTRACT NO. 68H89				
ILLINOIS FED. AID PROJECT				

**LEGEND:**

-  Work Area
-  Drum with steady burning light, 25' c.c.
-  Sign
-  Open Traffic Lane



**NOTE:** STAMPED STATIONS ON PAVEMENT ARE IN METRIC SYSTEM.

DRAWING NOT TO SCALE

FILE NAME =	USER NAME = christine.evers	DESIGNED -	REVISED -	<b>STATE OF ILLINOIS DEPARTMENT OF TRANSPORTATION</b>	<b>TRAFFIC CONTROL PLAN</b>			F.A.I. RTE.	SECTION	COUNTY	TOTAL SHEETS	SHEET NO.
pwt\ildot-pw.bentley.com\PWIDOT\Documents\IDOT Offices\District 4\Projects\04.68059\DRAWINGS\ADsheets\0468H89-sht-cover.dgn		CHECKED -	REVISED -					74	72(8,9,9-1)LS-15	PEORIA	17	16
Default		PLOT SCALE = 78,6960' / in.	REVISED -					CONTRACT NO. 68H89				
		PLOT DATE = 12/21/2023	REVISED -					ILLINOIS FED. AID PROJECT				

**HERBICIDE DOSAGE CHART**

<b>WATER</b>	<b>MILESTONE VM*</b>	<b>DRIFT CONTROL**</b>	<b>NON-IONIC SURFACTANT***</b>	<b>ACRES OF R.O.W.</b>
<b>(GALLONS)</b>	<b>(OZ.)</b>	<b>(OZ.)</b>	<b>(PINTS)</b>	<b>ACRE</b>
40	6	3.2	0.8	1
50	7.5	4	1	1.25
100	15	8	2	2.5
200	30	16	4	5
300	45	24	6	7.5
400	60	32	8	10
500	75	40	10	12.5
600	90	48	12	15
700	105	56	14	17.5
800	120	64	16	20
900	135	72	18	22.5
1000	150	80	20	25
1100	165	88	22	27.5
1200	180	96	24	30
1300	195	104	26	32.5
1400	210	112	28	35
1500	225	120	30	37.5

- \* BASED ON 6 OUNCES OF MILESTONE VM FOR EACH 1.0 ACRE
- \*\* BASED ON 8 OUNCES OF DRIFT CONTROL AGENT PER 100 GALLONS
- \*\*\* BASED ON 2 PINTS OF NON-IONIC SURFACTANT FOR EACH 100 GALLONS OF WATER

**WEED SPRAYING NOTES:**

Some Perennial plants are located in the weed spray location. Removal of all vegetation and debris except for Perennial Plants shall be completed prior to weed spraying. This work shall be included in the pay item for PERENNIAL PLANT CARE.

Weed Spraying must be completed at the beginning of the contract. No planting can be completed until after two weeks have passed. The Roadside Manager must approve of planting start dates.

See sheet 17 for Milestone Dosing Chart.

**FOR INFORMATION IN CASE OF A CHEMICAL EMERGENCY CALL:**

DOW AGRO AT 1-800-263-1196

**Notes:**

1. Suggested rate of water per acre. Refer to product label for verification.
2. Spraying machine shall be calibrated to deliver 6 oz of herbicide per acre 72 hr prior to job start.
3. Spot checks will be performed to check for herbicide delivery accuracy.

MODEL: Default  
FILE NAME: o:\ilrc\paw\_bentley.com\PI\DOT\Documents\DOT\_Offices\Dist\ct\_4\Projects\04\_68659\CADData\CAD\Sheet\0468H89-511c-cover.dgn

USER NAME = christine.evers	DESIGNED -	REVISED -
	DRAWN -	REVISED -
PLOT SCALE = 78,6960' / in.	CHECKED -	REVISED -
PLOT DATE = 12/21/2023	DATE -	REVISED -

**STATE OF ILLINOIS  
DEPARTMENT OF TRANSPORTATION**

**HERBICIDE DOSAGE CHART**

SCALE: SHEET OF SHEETS STA. TO STA.

F.A.I. RTE.	SECTION	COUNTY	TOTAL SHEETS	SHEET NO.
74	72(8,9,9-1)LS-15	PEORIA	17	17
			CONTRACT NO. 68H89	
ILLINOIS FED. AID PROJECT				