

STATE OF ILLINOIS
DEPARTMENT OF TRANSPORTATION

F.A.P. RTE.	SECTION	COUNTY	TOTAL SHEETS	SHEET NO.
317	(13)N	MCLEAN	13	1
		ILLINOIS	CONTRACT NO. 70G89	

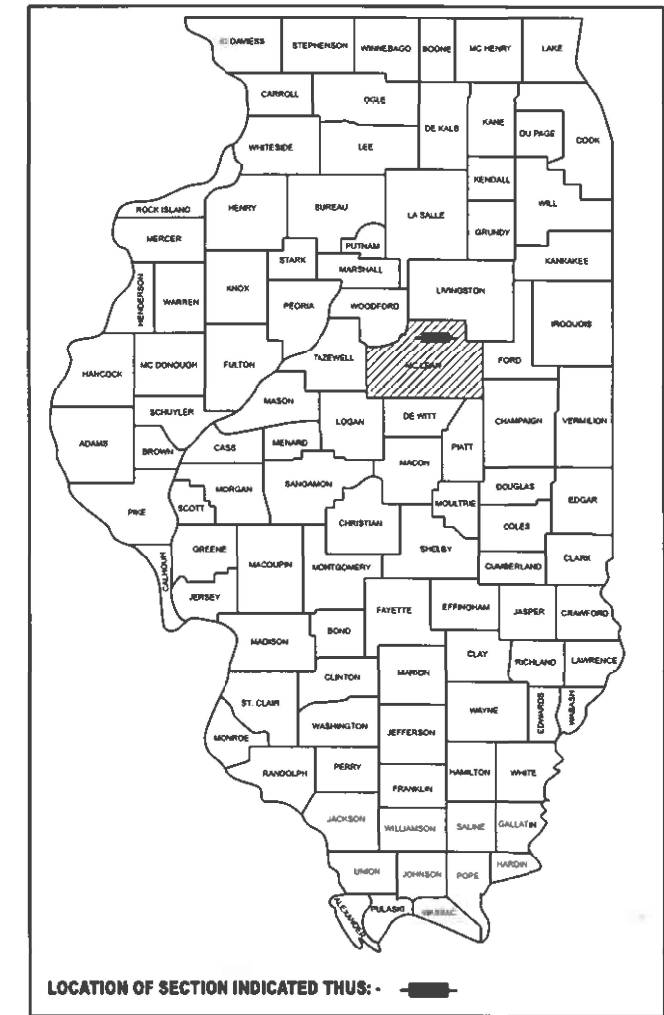
FOR INDEX OF SHEETS, SEE SHEET NO. 2
FOR SUMMARY OF QUANTITIES, SEE SHEET NO. 3

PROPOSED HIGHWAY PLANS

FAP ROUTE 317 (US 24) & FAS 294 (OLD US 66)
SECTION (13)N
PROJECT HSIP-RPFW(831)
MILLED RUMBLE STRIP
MCLEAN COUNTY

C-95-015-24

AT OLD RTE 66 IN CHENOA

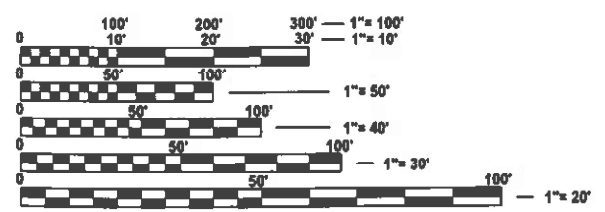
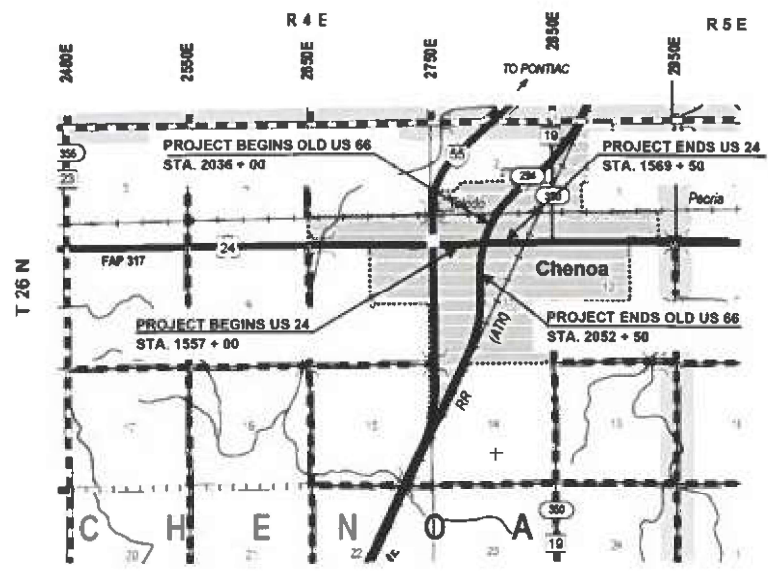


TRAFFIC DATA			
FAP 317 (US 24) & FAS 294 (OLD US)			
	LEG "A"	LEG "B"	LEG "C"
2023 ADT =	5,500	5,350	2,100
P.U. %	84.1	82.8	91.9
S.U. %	6.8	10.7	2.9
M.U. %	9.1	10.7	2.9

TRAFFIC DATA LOCATIONS
LEG "A" is US 24 from Enterprise Drive to Old US 66
LEG "B" is US 24 from Old US 66 to Pickett Street
LEG "C" is Old US 66 from 800 ft north of US 24 to 800 ft south of US 24

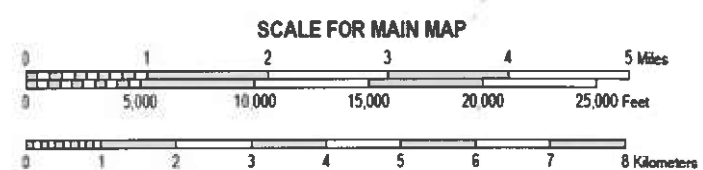
FUNCTIONAL CLASSIFICATION
US 24: Other Principal Arterial
Old US 66: Major Collector

TOWNSHIP
CHENOA



FULL SIZE PLANS HAVE BEEN PREPARED USING STANDARD ENGINEERING SCALES. REDUCED SIZED PLANS WILL NOT CONFORM TO STANDARD SCALES. IN MAKING MEASUREMENTS ON REDUCED PLANS, THE ABOVE SCALES MAY BE USED.

J.U.L.I.E.
JOINT UTILITY LOCATION INFORMATION FOR EXCAVATION
1-800-892-0123
OR 811 CHENOA TOWNSHIP



GROSS LENGTH = 1,250.00 FT. = 0.24 MILE
NET LENGTH = 1,250.00 FT. = 0.24 MILE

PROJECT ENGINEER: JASON STULTS
DESIGNER: JEANNIE BLAND
PHONE: (217)465-4181
CONTRACT NO. 70G89

STATE OF ILLINOIS
DEPARTMENT OF TRANSPORTATION

SUBMITTED December 5, 2023
Jason C. Stults
REGIONAL ENGINEER

February 2, 2024
Scott A. Etkin
ENGINEER OF DESIGN AND ENVIRONMENT

February 2, 2024
Stephen M. Smith
DIRECTOR OF HIGHWAYS PROJECT IMPLEMENTATION

**PRINTED BY THE AUTHORITY
OF THE STATE OF ILLINOIS**

INDEX OF SHEETS

SHEET NO.	DESCRIPTION
1	COVER SHEET
2	INDEX OF SHEETS
2	HIGHWAY STANDARDS
2	GENERAL NOTES
3	SUMMARY OF QUANTITIES
4 - 5	TYPICAL CROSS SECTION
6	SCHEDULE OF QUANTITIES
7 - 11	PLAN SHEETS
12	PAVEMENT PATCHING SPECIAL
13	RUMBLE STRIP (ADVANCE OF INTERSECTIONS)

HIGHWAY STANDARDS

STANDARD NO.	DESCRIPTION
000001-08	STANDARDS SYMBOLS, ABBREVIATIONS, & PATTERNS
001006	DECIMAL OF AN INCH AND OF A FOOT
701201-05	LANE CLOSURE, 2L, 2W, DAY ONLY, FOR SPEEDS ≤ 45 MPH
701306-04	LANE CLOSURE, 2L, 2W, SLOW MOVING OPERATIONS DAY ONLY, FOR SPEEDS ≥ 45 MPH
701502-09	URBAN LANE CLOSURE, 2L, 2W, WITH BIDIRECTIONAL LEFT TURN LANE
701701-10	URBAN LANE CLOSURE, MULTILANE INTERSECTION
701901-09	TRAFFIC CONTROL DEVICES
420701-03	PAVEMENT WELDED WIRE REINFORCEMENT

GENERAL NOTES

G.N.-100A
 ELECTRONIC FILES AND/OR ELECTRONIC SURVEY INFORMATION INCLUDING CADD
 FILES WILL NOT BE AVAILABLE TO THE CONTRACTOR.

COMMITMENTS

THERE ARE NO COMMITMENTS FOR THIS PROJECT

MODEL: Index Sheet [Sheet]
 FILE NAME: c:\pwr_wor\k\pwr\cd\p\ersonbr\0920648\0570G89_Gen-Notes.dgn

USER NAME = Bridgette.Pierson	DESIGNED -	REVISED -
	DRAWN -	REVISED -
PLOT SCALE = 0.16666667' / in.	CHECKED -	REVISED -
PLOT DATE = 10/30/2023	DATE -	REVISED -

**STATE OF ILLINOIS
 DEPARTMENT OF TRANSPORTATION**

**INDEX OF SHEETS, HIGHWAY STANDARDS,
 GENERAL NOTES & COMMITMENTS**

SCALE: NONE SHEET 1 OF 1 SHEETS STA. TO STA.

F.A.P. RTE.	SECTION	COUNTY	TOTAL SHEETS	SHEET NO.
317	(13)N	MCLEAN	13	2
CONTRACT NO. 70G89				
ILLINOIS FED. AID PROJECT				

LOCATION OF WORK:	FAP 317 (US 24) O.P.A. RURAL STA. 1557+00 - STA. 1569+50 MCLEAN	FAS 294 (OLD US 66) MAJOR COLLECTOR RURAL STA. 2036+00 - STA. 2053+00 MCLEAN
FUNDING BREAKOUT:	90% FEDERAL/10% STATE	90% FEDERAL/10% STATE
CONSTRUCTION TYPE CODE:	0021	0021

CODE NO.	ITEM	UNIT	TOTAL QUANTITY	ROADWAY QUANTITY	ROADWAY QUANTITY
44213000	PATCH REINFORCEMENT	SQ YD	441.0	225.0	216.0
44213200	SAW CUTS	FOOT	1,266.0	636.0	630.0
441213204	TIE BARS 3/4"	EACH	216.0	108.0	108.0
44213208	TIE BARS 1 1/4"	EACH	270.0	138.0	132.0
67100100	MOBILIZATION	L SUM	1.0	0.5	0.5
70100450	TRAFFIC CONTROL AND PROTECTION, 701201	L SUM	1.0	0.5	0.5
70100460	TRAFFIC CONTROL AND PROTECTION, 701306	L SUM	1.0	0.5	0.5
70102622	TRAFFIC CONTROL AND PROTECTION, 701502	L SUM	1.0	0.5	0.5
* 78000400	THERMOPLASTIC PAVEMENT MARKING - LINE 6"	FOOT	251.0	251.0	
* 78000650	THERMOPLASTIC PAVEMENT MARKING - LINE 24"	FOOT	144.0	86.0	58.0
X4420201	PAVEMENT PATCHING (SPECIAL)	SQ YD	441.0	225.0	216.0
Z0013798	CONSTRUCTION LAYOUT	L SUM	1.0	0.5	0.5
Z0055300	RUMBLE STRIP	EACH	12.0	6.0	6.0
* DENOTES SPECIALTY ITEM					

MODEL: SOQ (Sheet)
FILE NAME: c:\p\work\p\pierson\09202648\0570G89_Sht-SOQ.dgn

USER NAME = Bridgette.Pierson	DESIGNED -	REVISED -
	DRAWN -	REVISED -
PLOT SCALE = 0.1666667' / in.	CHECKED -	REVISED -
PLOT DATE = 11/7/2023	DATE -	REVISED -

**STATE OF ILLINOIS
DEPARTMENT OF TRANSPORTATION**

SUMMARY OF QUANTITIES

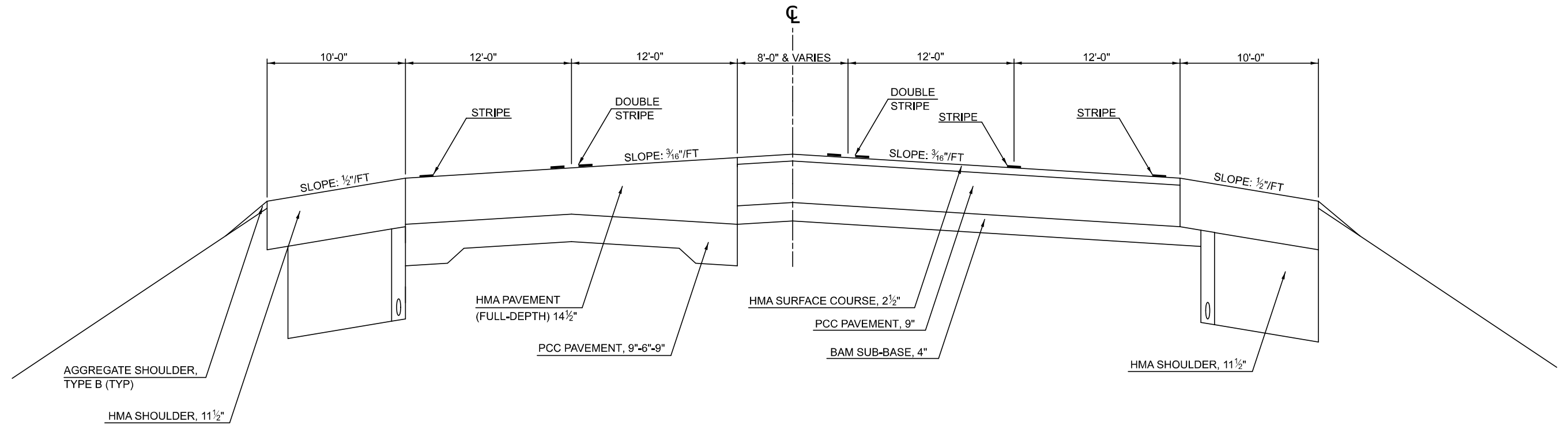
SCALE: NONE SHEET 1 OF 1 SHEETS STA. TO STA.

F.A.P. RTE. 317	SECTION (13)N	COUNTY MCLEAN	TOTAL SHEETS 13	SHEET NO. 3
CONTRACT NO. 70G89			ILLINOIS FED. AID PROJECT	

① TYPICAL CROSS-SECTION

FAP 317 (US 24)

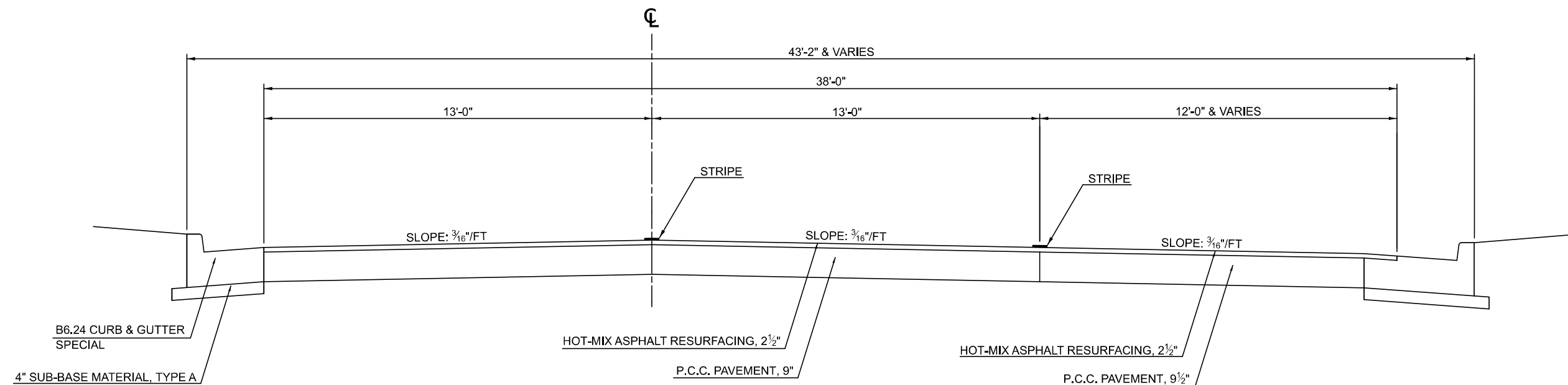
STA. 1557+00.00 TO STA. 1563+00.00



② TYPICAL CROSS-SECTION

FAP 317 (US 24)

STA. 1563+40.00 TO STA. 1571+00.00



MODEL: Typical-1 (Sheet)
FILE NAME: c:\p\work\wv\rd\p\person\br\09202648\0570G89_Sht-Typicals.dgn

USER NAME = Bridgette.Pierson	DESIGNED -	REVISED -
	DRAWN -	REVISED -
PLOT SCALE = 0.16666667 / in.	CHECKED -	REVISED -
PLOT DATE = 10/30/2023	DATE -	REVISED -

**STATE OF ILLINOIS
DEPARTMENT OF TRANSPORTATION**

**TYPICAL CROSS SECTIONS
FAP 317 (US 24)**

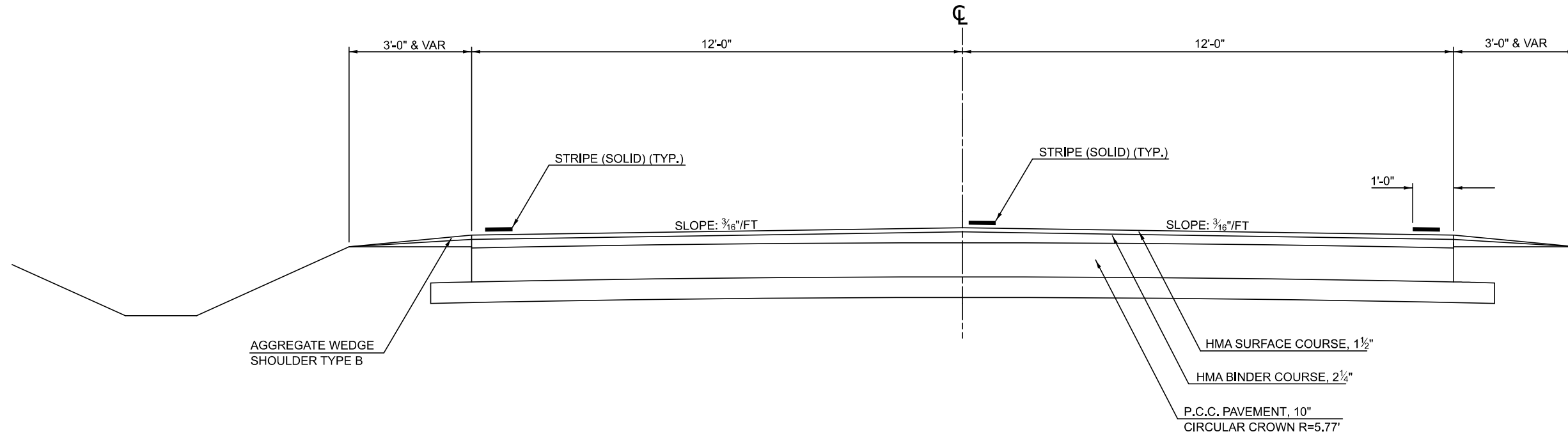
SCALE: NONE SHEET 1 OF 2 SHEETS STA. TO STA.

F.A.P. RTE. 317	SECTION (13)N	COUNTY MCLEAN	TOTAL SHEETS 13	SHEET NO. 4
CONTRACT NO. 70G89				
ILLINOIS FED. AID PROJECT				

3 TYPICAL CROSS-SECTION

FAS 294 (OLD US 66)

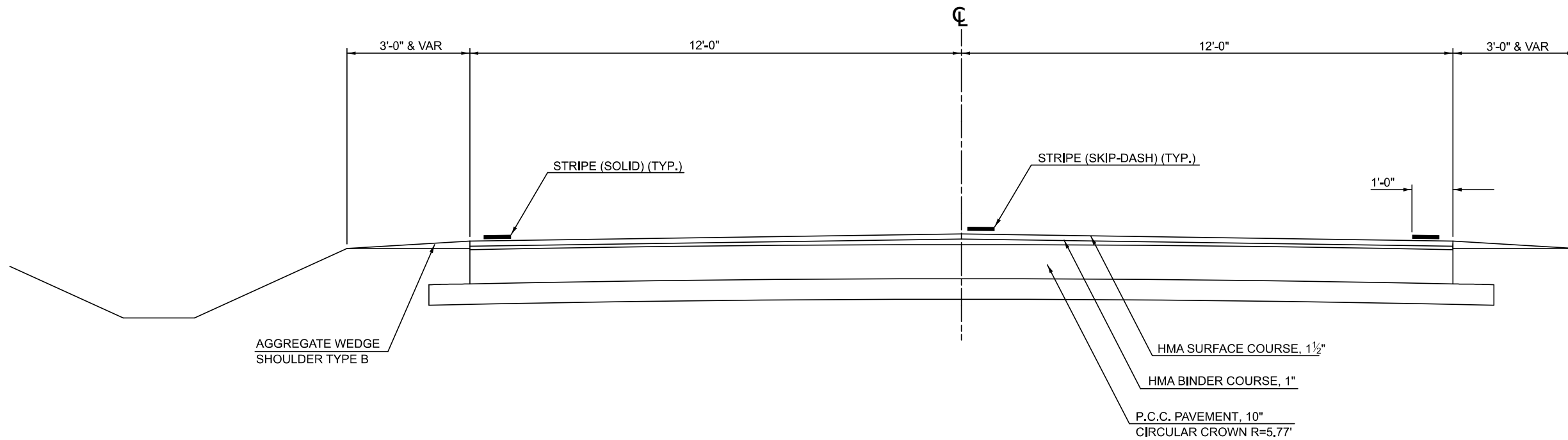
STA. 2034+25.00 TO STA. 2043+75.00
 STA. 2048+21.63 TO STA. 2054+35.00



4 TYPICAL CROSS-SECTION

FAS 294 (OLD US 66)

STA. 2044+85.00 TO STA. 2048+21.63



MODEL: Typical [Sheet]
 FILE NAME: c:\p\work\pww\del\pierson\09202648\0570G89_Sht-Typicals.dgn

USER NAME = Bridgette.Pierson	DESIGNED -	REVISED -
	DRAWN -	REVISED -
PLOT SCALE = 0.1666667' / in.	CHECKED -	REVISED -
PLOT DATE = 10/30/2023	DATE -	REVISED -

**STATE OF ILLINOIS
 DEPARTMENT OF TRANSPORTATION**

**TYPICAL CROSS SECTIONS
 FAS 294 (OLD US 66)**

SCALE: NONE SHEET 2 OF 2 SHEETS STA. TO STA.

F.A.P. RTE.	SECTION	COUNTY	TOTAL SHEETS	SHEET NO.
317	(13)N	MCLEAN	13	5
CONTRACT NO. 70G89				
ILLINOIS FED. AID PROJECT				

SCHEDULE OF QUANTITIES

PATCHING SCHEDULE

STATION	ROUTE	THICKNESS	LENGTH FT	WIDTH FT	AREA SQYD	PAVEMENT PATCHING (SPECIAL)	PATCH REINFORCEMENT	SAW CUTS	TIE BARS 3/4"	TIE BARS 1 1/4"	RUMBLE STRIP
						(SQ YD)	(SQ YD)	(FT)	(EACH)	(EACH)	(EACH)
RT 1558+10	US 24	11 1/2"	27.00	12.00	36.00	X4420201 36.00	44213000 36.00	44213200 105.00	44213204 18.00	44213208 22.00	Z0055300 1.00
RT 1560+60	US 24	11 1/2"	27.00	12.00	36.00	36.00	36.00	105.00	18.00	22.00	1.00
RT 1561+85	US 24	11 1/2"	27.00	12.00	36.00	36.00	36.00	105.00	18.00	22.00	1.00
LT 1565+83	US 24	11 1/2"	27.00	13.00	39.00	39.00	39.00	107.00	18.00	24.00	1.00
LT 1566+83	US 24	11 1/2"	27.00	13.00	39.00	39.00	39.00	107.00	18.00	24.00	1.00
LT 1569+33	US 24	11 1/2"	27.00	13.00	39.00	39.00	39.00	107.00	18.00	24.00	1.00
US 24 SUBTOTALS						225.00	225.00	636.00	108.00	138.00	6.00
RT 2036+27	OLD US 66	13 3/4"	27.00	12.00	36.00	36.00	36.00	105.00	18.00	22.00	1.00
RT 2039+77	OLD US 66	12 1/2"	27.00	12.00	36.00	36.00	36.00	105.00	18.00	22.00	1.00
RT 2041+02	OLD US 66	12 1/2"	27.00	12.00	36.00	36.00	36.00	105.00	18.00	22.00	1.00
LT 2048+10	OLD US 66	12 1/2"	27.00	12.00	36.00	36.00	36.00	105.00	18.00	22.00	1.00
LT 2049+35	OLD US 66	13 3/4"	27.00	12.00	36.00	36.00	36.00	105.00	18.00	22.00	1.00
LT 2052+85	OLD US 66	13 3/4"	27.00	12.00	36.00	36.00	36.00	105.00	18.00	22.00	1.00
OLD US 66 SUBTOTALS						216.00	216.00	630.00	108.00	132.00	6.00
TOTALS USE:						441.0	441.0	1,266.0	216.0	270.0	12.0

STRIPING SCHEDULE

LOCATIONS	STATION	DESCRIPTION	LENGTH FT	WIDTH INCH	COLOR	THERMOPLASTIC PAVEMENT MARKING LINE, 4" (FT)	THERMOPLASTIC PAVEMENT MARKING LINE, 24" (FT)
						78000400	/8000650
US 24	RT STA. 1563+60.00	MAINLINE STOP BAR	26.00	24.00	WHITE		26.00
US 24	RT STA. 1564+10.00	RT TURN LANE STOP BAR	17.00	24.00	WHITE		17.00
US 24	RT STA. 1563+65.00	CROSSWALK	251.00	6.00	WHITE	251.00	
US 24	LT STA. 1564+75.00	MAINLINE STOP BAR	26.00	24.00	WHITE		26.00
US 24	LT STA. 1564+85.00	RT TURN LANE STOP BAR	17.00	24.00	WHITE		17.00
US 24 SUBTOTALS						251.00	86.00
OLD US 66	RT STA. 2043+74.50	MAINLINE STOP BAR	12.00	24.00	WHITE		12.00
OLD US 66	RT STA. 2043+95.00	RT TURN LANE STOP BAR	17.00	24.00	WHITE		17.00
OLD US 66	LT STA. 2044+85.00	MAINLINE STOP BAR	12.00	24.00	WHITE		12.00
OLD US 66	LT STA. 2044+68.00	RT TURN LANE STOP BAR	17.00	24.00	WHITE		17.00
OLD US 66 SUBTOTALS						0.00	58.00
TOTAL USE:						251.00	144.00

MODEL: Schedule of Quantities (Sheet)
FILE NAME: c:\pwworking\piersonb\09202648\0570G89_Sht-Schedule.dgn

USER NAME = Bridgette.Pierson	DESIGNED -	REVISED -
	DRAWN -	REVISED -
PLOT SCALE = 0.1666667 / in.	CHECKED -	REVISED -
PLOT DATE = 10/30/2023	DATE -	REVISED -

**STATE OF ILLINOIS
DEPARTMENT OF TRANSPORTATION**

SCHEDULE OF QUANTITIES

SCALE: NONE SHEET 1 OF 1 SHEETS STA. TO STA.

F.A.P. RTE. 317	SECTION (13)N	COUNTY MCLEAN	TOTAL SHEETS 13	SHEET NO. 6
CONTRACT NO. 70G89				ILLINOIS FED. AID PROJECT



US-66
North of US-24/US-66 Intersection



 Rumble Strip (Advance of Intersection)

Note: All dimensions measured along centerline of roadway.

MODEL: Plan Sheet 1 [Sheet]
FILE NAME: c:\p\work\wv\cd\pierson\cd\020648\0570G89_Sht-Plan.dgn

USER NAME = Bridgette.Pierson	DESIGNED -	REVISED -
	DRAWN -	REVISED -
PLOT SCALE = 0.1666667' / in.	CHECKED -	REVISED -
PLOT DATE = 10/5/2023	DATE -	REVISED -

STATE OF ILLINOIS
DEPARTMENT OF TRANSPORTATION

PLAN SHEETS	
US 66	
SCALE: NONE	SHEET 1 OF 5 SHEETS STA. TO STA.

F.A.P. RTE.	SECTION	COUNTY	TOTAL SHEETS	SHEET NO.
317	(13)N	MCCLEAN	13	7
CONTRACT NO. 70G89				
ILLINOIS FED. AID PROJECT				

US-24
East of US-24/US-66 Intersection



Rumble Strip (Advance of Intersection)

Note: All dimensions measured along centerline of roadway.

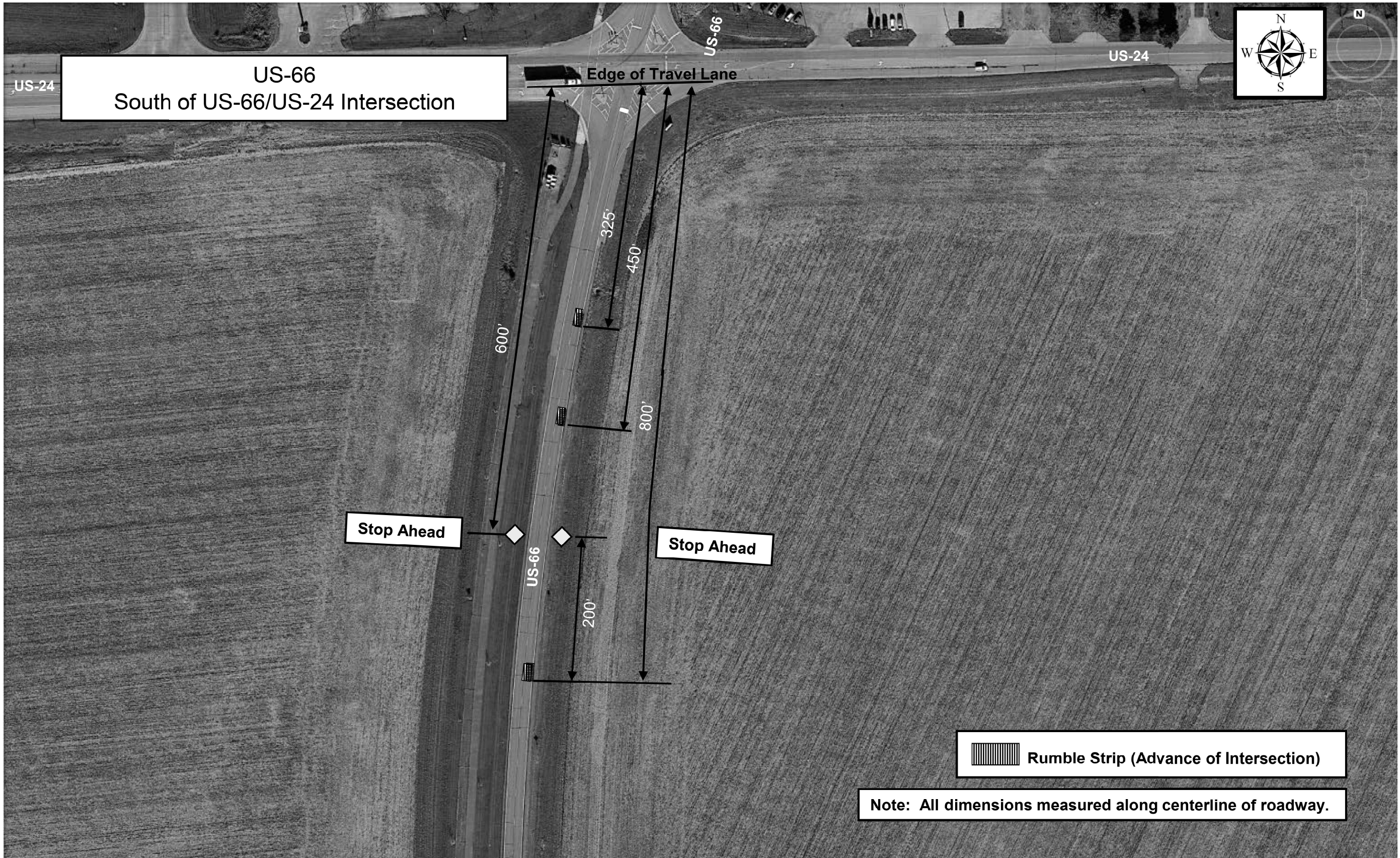
MODEL: Plan Sheet 2 (Sheet)
FILE NAME: c:\p\work\70g89\plan\plan.dgn

USER NAME = Bridgette, Pierson	DESIGNED -	REVISED -
	DRAWN -	REVISED -
PLOT SCALE = 0.16666667 / in.	CHECKED -	REVISED -
PLOT DATE = 10/5/2023	DATE -	REVISED -

STATE OF ILLINOIS
DEPARTMENT OF TRANSPORTATION

PLAN SHEETS US 24			
SCALE: NONE	SHEET 2	OF 5 SHEETS	STA. TO STA.

F.A.P. RTE.	SECTION	COUNTY	TOTAL SHEETS	SHEET NO.
317	(13)N	MCLEAN	13	8
CONTRACT NO. 70G89				
ILLINOIS FED. AID PROJECT				



MODEL: Plan Sheet 3 [Sheet]
 FILE NAME: c:\p\work\wv\wv\pierson\c0920648\0570G89_Sht-Plan.dgn

USER NAME = Bridgette.Pierson	DESIGNED -	REVISED -
	DRAWN -	REVISED -
PLOT SCALE = 0.1666667' / in.	CHECKED -	REVISED -
PLOT DATE = 10/30/2023	DATE -	REVISED -

**STATE OF ILLINOIS
 DEPARTMENT OF TRANSPORTATION**

**PLAN SHEET
 US 24**

SCALE: NONE SHEET 3 OF 5 SHEETS STA. TO STA.

F.A.P. RTE.	SECTION	COUNTY	TOTAL SHEETS	SHEET NO.
317	(13)N	MCLEAN	13	9
CONTRACT NO. 70G89				
ILLINOIS FED. AID PROJECT				

US-24
West of US-24/US-66 Intersection



Stop Ahead

Rumble Strip (Advance of Intersection)

Note: All dimensions measured along centerline of roadway.

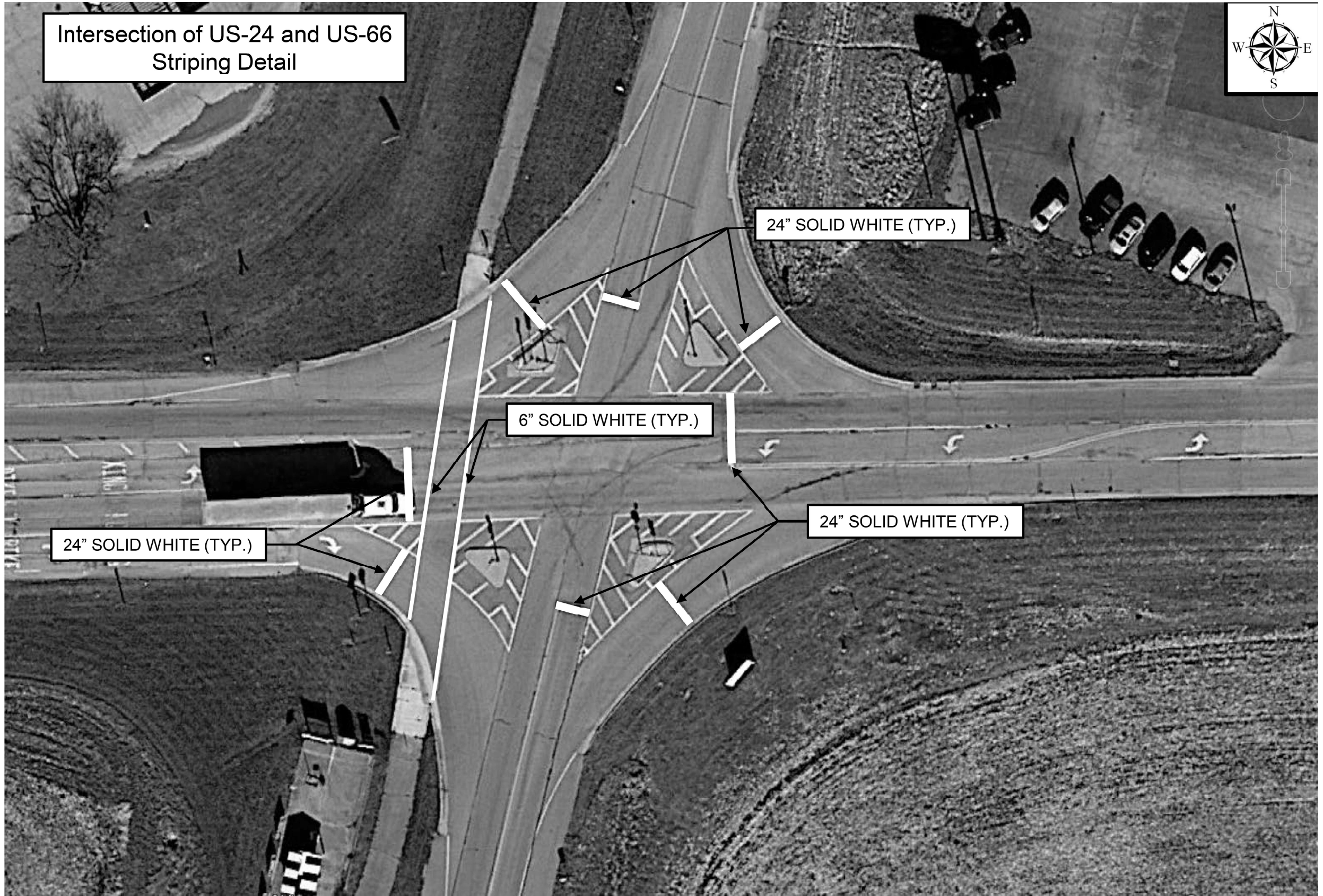
MODEL: Plan Sheet 4 [Sheet]
FILE NAME: c:\p\work\wv\wv\p\person\br\09202648\0570G89_Sht-Plan.dgn

USER NAME = Bridgette.Pierson	DESIGNED -	REVISED -
	DRAWN -	REVISED -
PLOT SCALE = 0.1666667' / in.	CHECKED -	REVISED -
PLOT DATE = 10/30/2023	DATE -	REVISED -

STATE OF ILLINOIS
DEPARTMENT OF TRANSPORTATION

PLAN SHEET	
US 24	
SCALE: NONE	SHEET 4 OF 5 SHEETS STA. TO STA.

F.A.P. RTE. 317	SECTION (13)N	COUNTY MCLEAN	TOTAL SHEETS 13	SHEET NO. 10
CONTRACT NO. 70G89				
ILLINOIS FED. AID PROJECT				



Intersection of US-24 and US-66
Striping Detail



MODEL: Plan Sheet 5 (Sheet)
FILE NAME: c:\pwworking\piersonb\09202648\0570G89_Sht-Plan.dgn

USER NAME = Bridgette, Pierson	DESIGNED -	REVISED -
	DRAWN -	REVISED -
PLOT SCALE = 0.1666667 / in.	CHECKED -	REVISED -
PLOT DATE = 11/2/2023	DATE -	REVISED -

**STATE OF ILLINOIS
DEPARTMENT OF TRANSPORTATION**

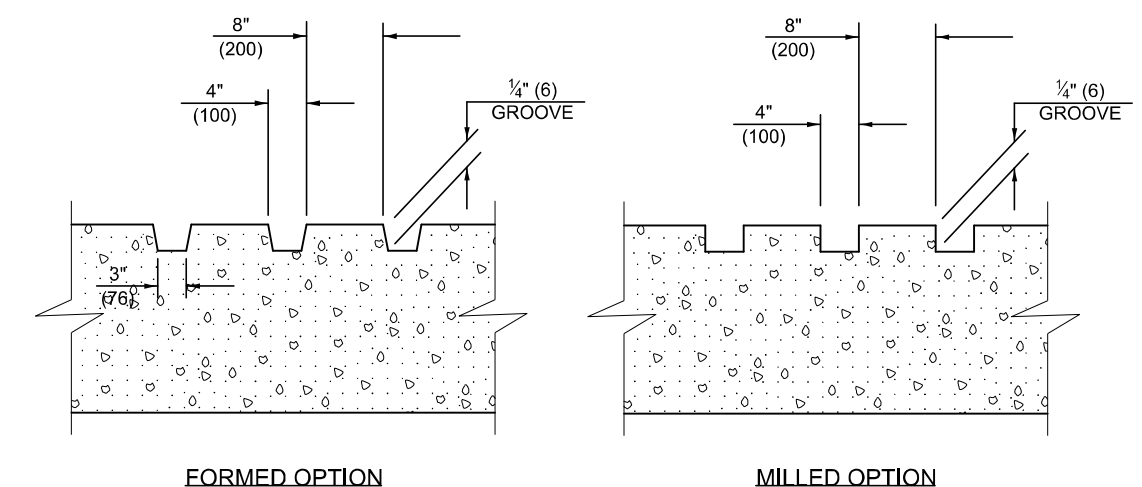
**PLAN SHEET
US 24**

SCALE: NONE SHEET 5 OF 5 SHEETS STA. TO STA.

F.A.P. RTE. 317	SECTION (13)N	COUNTY MCLEAN	TOTAL SHEETS 13	SHEET NO. 11
CONTRACT NO. 70G89				
ILLINOIS FED. AID PROJECT				

GENERAL NOTES

1. MILLED GROOVES SHALL BE CONSTRUCTED USING A 4" (100 mm) MILLING HEAD OR SERIES OF 4" (100 mm) MILLING HEADS CAPABLE OF CUTTING TO THE SPECIFIED DEPTH OR ANY VARIABLE DEPTH.
2. THIS WORK WILL BE MEASURED FOR PAYMENT PER EACH 25' (7.6 m) INDIVIDUAL RUMBLE STRIP APPLIED AND PAID FOR AT THE CONTRACT UNIT PRICE EACH FOR RUMBLE STRIP, WHICH PRICE SHALL INCLUDE ALL EQUIPMENT, MATERIAL, LABOR AND OTHER ITEMS REQUIRED TO INSTALL EACH INDIVIDUAL RUMBLE STRIP.



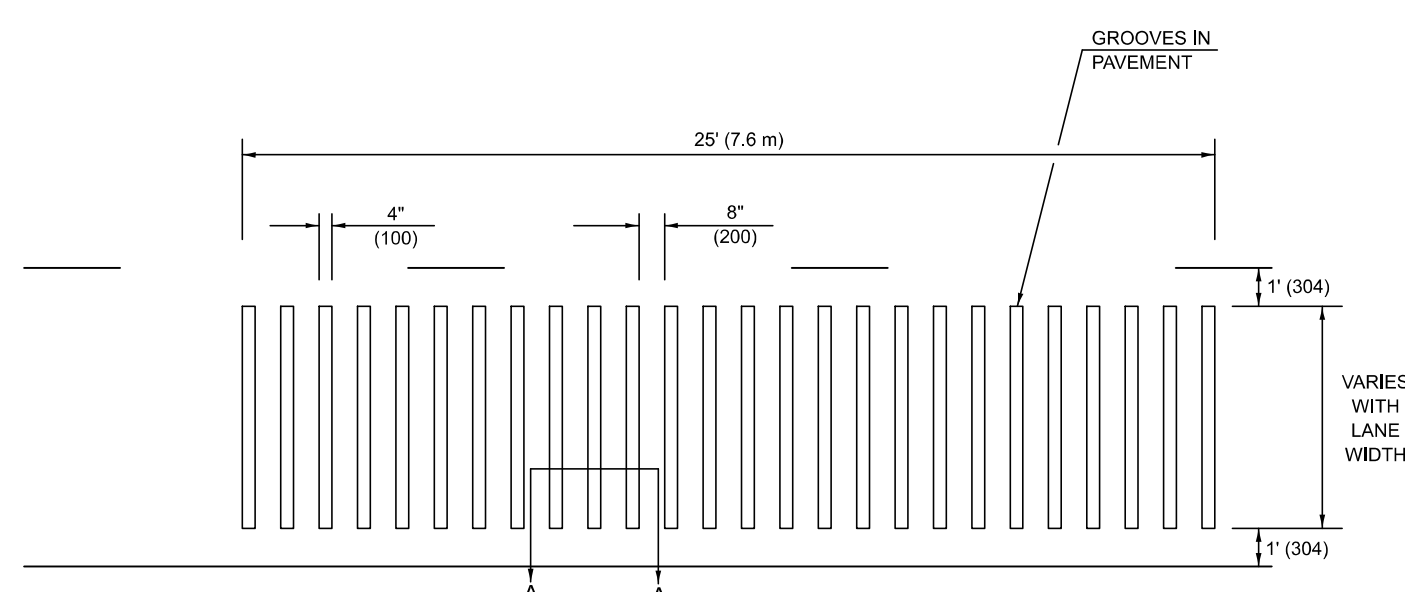
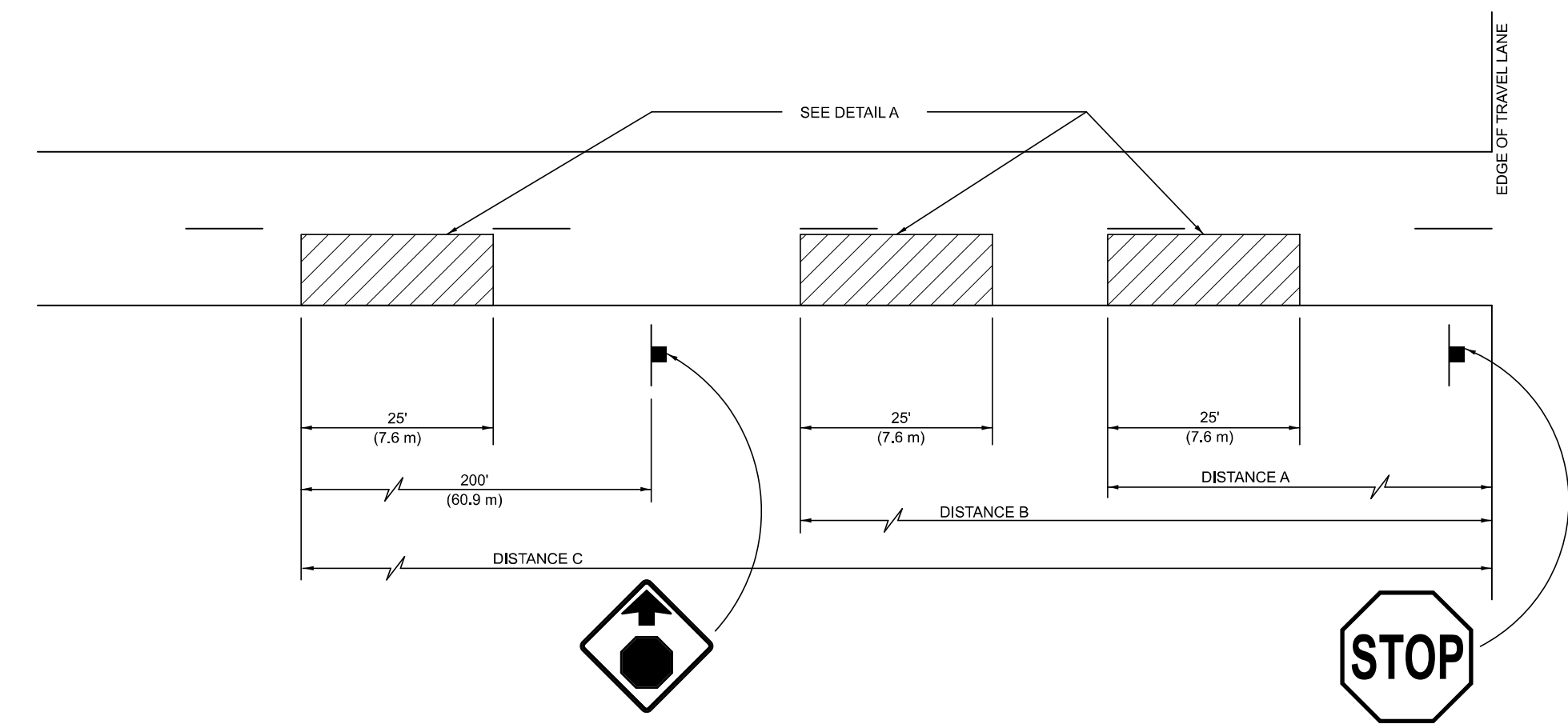
SECTION A-A

LOCATION	DISTANCE TO RUMBLE STRIP (FEET)		
	DISTANCE A	DISTANCE B	DISTANCE C
OLD US 66 NORTH LEG	325	450	800
OLD US 66 SOUTH LEG	325	450	800
US 24 WEST LEG	225	350	600
US 24 EAST LEG	150	250	500

Note: All dimensions are in INCHES (millimeters) unless otherwise shown.

DISTRICT 5 DETAIL NO. Z0055300

F.A.P. RTE.	SECTION	COUNTY	TOTAL SHEETS	SHEET NO.
317	(13)N	MCLEAN	13	13
CONTRACT NO. 70G89				



DETAIL A

MODEL: Rumble Strip (Advance of Intersections)
FILE NAME: c:\pwworking\dwg\piersonbr\03202648\0570G89_Sht-Detail_Rumble Strip.dgn

USER NAME = Bridgette.Pierson	DESIGNED -	REVISED - 11/06
PLOT SCALE = 0.16666600' / in.	DRAWN -	REVISED -
PLOT DATE = 10/10/2023	CHECKED -	REVISED -
	DATE -	REVISED -

STATE OF ILLINOIS
DEPARTMENT OF TRANSPORTATION

RUMBLE STRIP (ADVANCE OF INTERSECTIONS)

SCALE: NONE SHEET 1 OF 1 SHEETS STA. TO STA.