

STATE OF ILLINOIS
DEPARTMENT OF TRANSPORTATION

F.A.I. RTE.	SECTION	COUNTY	TOTAL SHEETS	SHEET NO.
57	D7 WEED SPRAY 2024-1	COLES	5	1
		ILLINOIS	CONTRACT NO. 74C89	

FOR INDEX OF SHEETS, SEE SHEET NO. 2

ADT = 11,800 (2023)

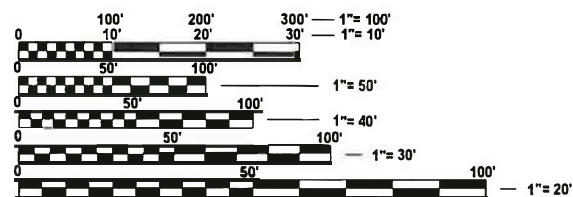
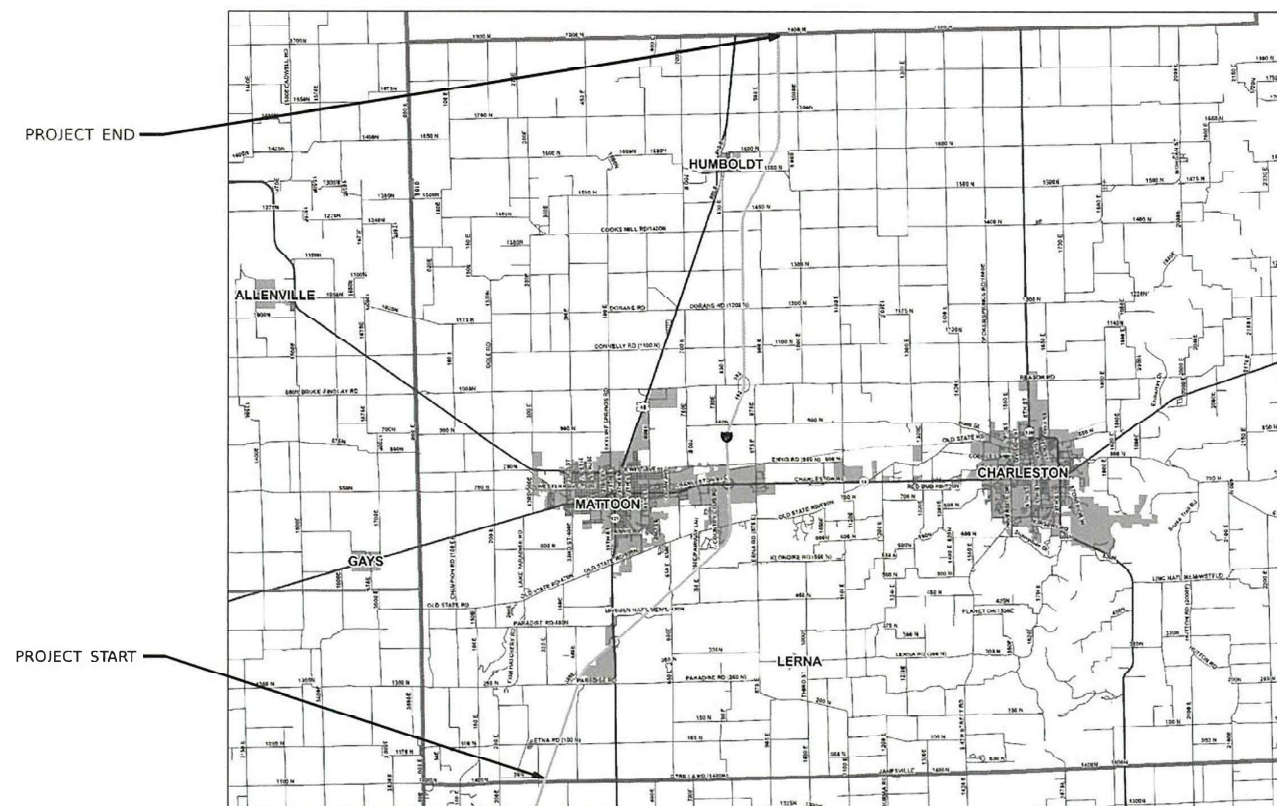
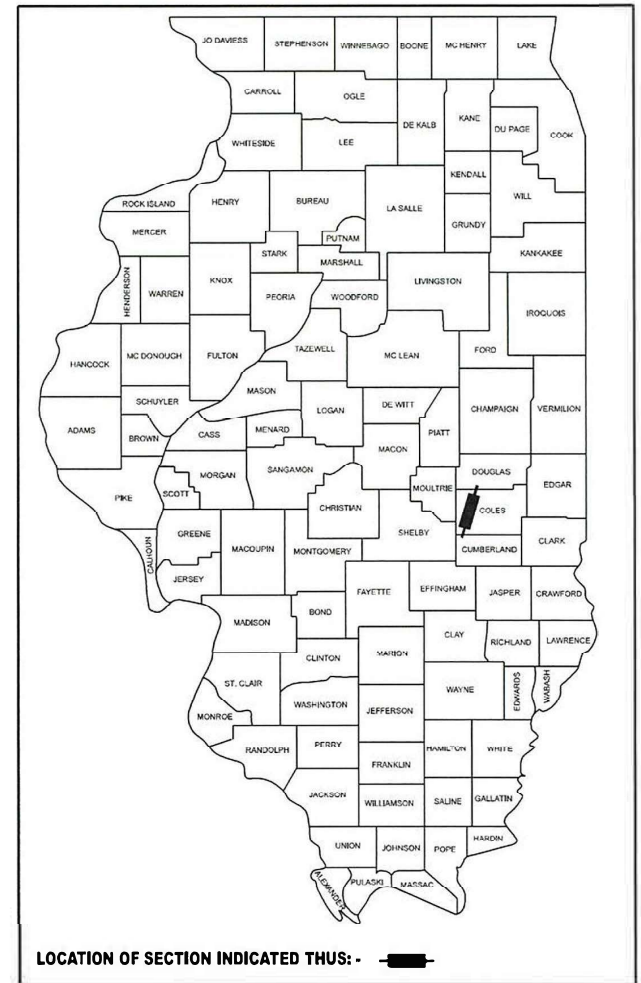
PROPOSED HIGHWAY PLANS

FAI ROUTE 57 (I-57)
SECTION D7 WEED SPRAYING 2024-1

WEED CONTROL
COLES COUNTY

C-97-034-24

D-97-020-24



FULL SIZE PLANS HAVE BEEN PREPARED USING STANDARD ENGINEERING SCALES. REDUCED SIZED PLANS WILL NOT CONFORM TO STANDARD SCALES. IN MAKING MEASUREMENTS ON REDUCED PLANS, THE ABOVE SCALES MAY BE USED.

J.U.L.I.E.
JOINT UTILITY LOCATION INFORMATION FOR EXCAVATION
1-800-892-0123
OR 811

PROJECT ENGINEER JACQUELYN SEALS
PROJECT MANAGER ETHAN DOW

CONTRACT NO. 74C89

GROSS LENGTH = 112,886.40 FT. = 21.38 MILE
NET LENGTH = 98,841.60 FT. = 18.72 MILE

STATE OF ILLINOIS
DEPARTMENT OF TRANSPORTATION

SUBMITTED DECEMBER 20 23

Jacquelyn P. Seals
REGIONAL ENGINEER

February 2, 2024
Scott A. Etkin
ENGINEER OF DESIGN AND ENVIRONMENT

February 2, 2024
Stephen M. Davis
DIRECTOR OF HIGHWAYS PROJECT IMPLEMENTATION

PRINTED BY THE AUTHORITY
OF THE STATE OF ILLINOIS

INDEX OF SHEETS

<u>SHEET NO.</u>	<u>ITEM</u>
1	COVER SHEET
2	INDEX OF SHEETS, LIST OF STANDARDS & SPRAY LIMITS
3	SUMMARY OF QUANTITIES
4	LOCATION MAPS
5	NO SPRAY AREAS

THE FOLLOWING STANDARDS ARE A PART OF THESE PLANS AND ARE INCLUDED AFTER SHEET NO. 5:

STANDARD NO. DESCRIPTION

000001-08	STANDARD SYMBOLS, ABBREVIATIONS, AND PATTERNS
001006	DECIMAL OF AN INCH AND OF A FOOT
701101-05	OFF-ROAD OPERATIONS, MULTILANE, 15' (4.5 M) TO 24" (600 MM) FROM PAVEMENT EDGE
701106-02	OFF-ROAD OPERATIONS, MULTILANE, MORE THAN 15' (4.5 M) FROM PAVEMENT EDGE
701426-09	LANE CLOSURE, MULTILANE, INTERMITTENT OR MOVING OPERATION, FOR SPEEDS GREATER THAN 45 MPH
701901-09	TRAFFIC CONTROL DEVICES

SPRAY LIMITS

ROUTE	COUNTY	MILE POST	DESCRIPTION	MILES
I-57	COLES	0.00 TO 21.38	CUMBERLAND COUNTY LINE TO DOUGLAS COUNTY LINE	18.72

NOTES:

WEED SPRAY SHALL BE APPLIED ON AREAS ALONG I-57 AS DIRECTED BY THE ROADSIDE MAINTENANCE TECHNICIAN. IT IS THE INTENT TO USE THE ENTIRE QUANTITY WITHIN THE MILEPOSTS SHOWN.

THE RURAL/URBAN SPLITS FOR THIS CONTRACT ARE AS FOLLOWS:

- MILE MARKER 0.00 TO MILE MARKER 2.66 IS RURAL
- MILE MARKER 2.66 TO MILE MARKER 4.76 IS URBAN
- MILE MARKER 4.76 TO MILE MARKER 7.71 IS RURAL
- MILE MARKER 7.71 TO MILE MARKER 12.17 IS URBAN - NO SPRAY 9.51 TO 12.17
- MILE MARKER 12.17 TO MILE MARKER 21.38 IS RURAL

REV. - MS

MODEL: I:\Unlited [Sheet]
FILE NAME: c:\pw\wcpkpw\states\illinois\mkk094877\0774C89-4ht-gemmois.dgn

USER NAME = Ethan.Dow	DESIGNED -	REVISED -
PLOT SCALE = 0.16666633 / in.	DRAWN -	REVISED -
PLOT DATE = 12/19/2023	CHECKED -	REVISED -
	DATE -	REVISED -

**STATE OF ILLINOIS
DEPARTMENT OF TRANSPORTATION**

**INDEX OF SHEETS, LIST OF STANDARDS
& SPRAY LIMITS**

SCALE: SHEET OF SHEETS STA. TO STA.

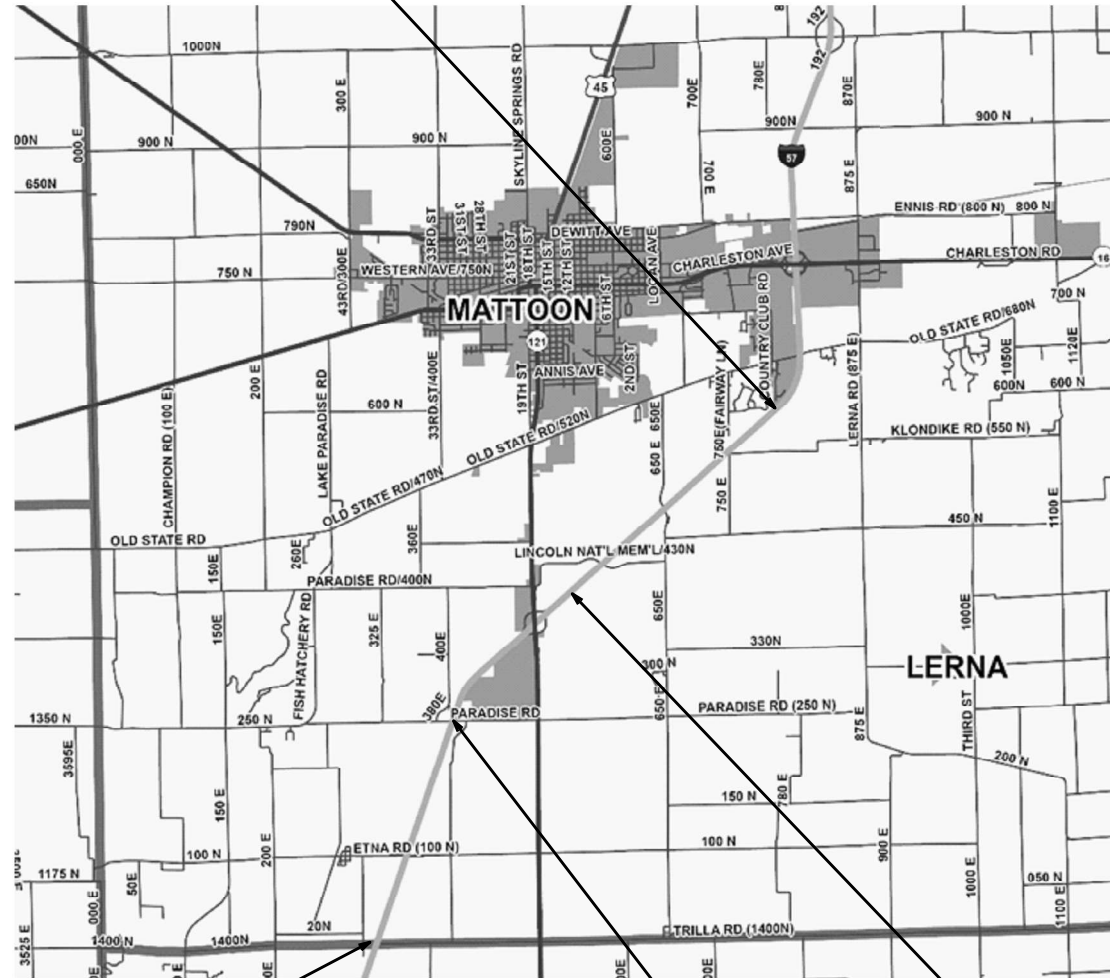
F.A.I. RTE.	SECTION	COUNTY	TOTAL SHEETS	SHEET NO.
57	D7 WEED SPRAY 2024-1	COLES	5	2
CONTRACT NO. 74C89				
ILLINOIS FED. AID PROJECT				

SUMMARY OF QUANTITIES			TOTAL QUANTITIES	CONSTRUCTION TYPE CODE	
CODE NO	ITEM	UNIT		0031 RURAL	0031 URBAN
67100100	MOBILIZATION	L SUM	1	0.69	0.31
K0029636	ESCORT XP HERBICIDE	POUND	72	56	16
X0325947	MILESTONE	GALLON	32	25	7

REV. - MS

MODEL: Summary of Quantities (Sheet)
FILE NAME: c:\p\work\projects\states\mkk\084877\0774C89-8h-S00.dgn

I-57
MM 7.71
(RURAL/URBAN SPLIT)



I-57
MM 0.00
(RURAL)

I-57
MM 2.66
(RUAL/URBAN SPLIT)

I-57
MM 4.76
(URBAN/RURAL SPLIT)

I-57
MM 21.38
(RURAL)



I-57
MM 12.17
(URBAN/RURAL SPLIT)

MODEL - Project Limits (Sheet)
FILE NAME - c:\pawork\awid\stefanmk\0948779\0714\0388-h-plan.dgn

USER NAME = Mona.Steffen	DESIGNED -	REVISED -
	DRAWN -	REVISED -
PLOT SCALE = 0.16666833' / in.	CHECKED -	REVISED -
PLOT DATE = 12/21/2023	DATE -	REVISED -

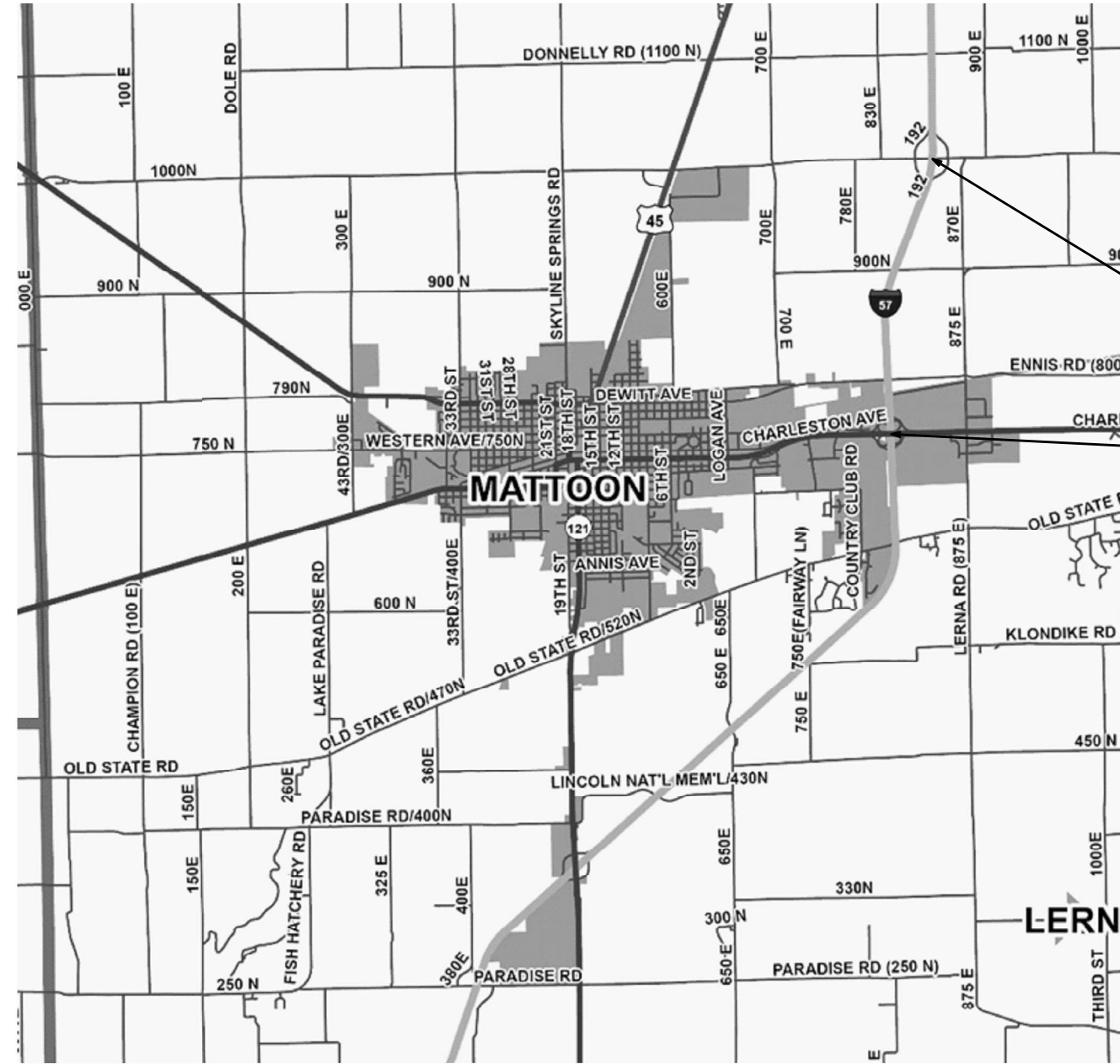
**STATE OF ILLINOIS
DEPARTMENT OF TRANSPORTATION**

**PROJECT LIMITS
I-57 (COLES COUNTY) RURAL & URBAN**

SCALE: SHEET OF SHEETS STA. TO STA.

F.A.I. RTE.	SECTION	COUNTY	TOTAL SHEETS	SHEET NO.
57	D7 WEED SPRAY 2024-1	COLES	5	4
CONTRACT NO. 74C89				
ILLINOIS FED. AID PROJECT				

MODEL: No Spray Areas (Sheet)
 FILE NAME: c:\p\work\wis\stef\mkmk\0948779\0714C98e-h-plan.dgn



NO SPRAY AREA
 (MM 9.51 TO 12.17)

USER NAME = Mona.Steffen	DESIGNED -	REVISED -
	DRAWN -	REVISED -
PLOT SCALE = 0.16666833' / in.	CHECKED -	REVISED -
PLOT DATE = 12/21/2023	DATE -	REVISED -

**STATE OF ILLINOIS
 DEPARTMENT OF TRANSPORTATION**

**NO SPRAY AREAS
 I-57 (COLES COUNTY)**

SCALE: SHEET OF SHEETS STA. TO STA.

F.A.I. RTE.	SECTION	COUNTY	TOTAL SHEETS	SHEET NO.
57	D7 WEED SPRAY 2024-1	COLES	5	5
CONTRACT NO. 74C89				
ILLINOIS FED. AID PROJECT				