

STATE OF ILLINOIS
DEPARTMENT OF TRANSPORTATION

F.A.P. RTE	SECTION	COUNTY	TOTAL SHEETS	SHEET NO.
355	(259.47)Q	JERSEY	11	1
		ILLINOIS	CONTRACT NO. 76T22	

FOR INDEX OF SHEETS, SEE SHEET NO. 2

TRAFFIC DATA

	BEGIN OF PROJ. - DELHI RD.	DELHI RD. - MCCLUSKY RD.	MCCLUSKY RD. - INDIAN LAKE RD.	INDIAN LAKE RD. - HILLTOP LN.
2023 ADT (ACTUAL)	50	850	1100	1100
2024 ADT (ESTIMATED)	50	850	1100	1100
2044 ADT (ESTIMATED)	50	950	1250	1250
SD (%)	18	5.9	5.4	3.8
MDU (%)	4	1.8	1.8	1.8

FUNCTIONAL CLASSIFICATION

BEGIN OF PROJ. - DELHI RD.	DELHI RD. - MCCLUSKY RD.	MCCLUSKY RD. - N. OF HILLSIDE LN.	N. OF HILLSIDE LN. - HILLTOP LN.
LOCAL RD.	MAJOR COLLECTOR	MINOR COLLECTOR	LOCAL RD.

PROPOSED
HIGHWAY PLANS

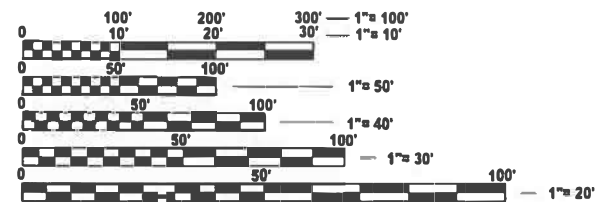
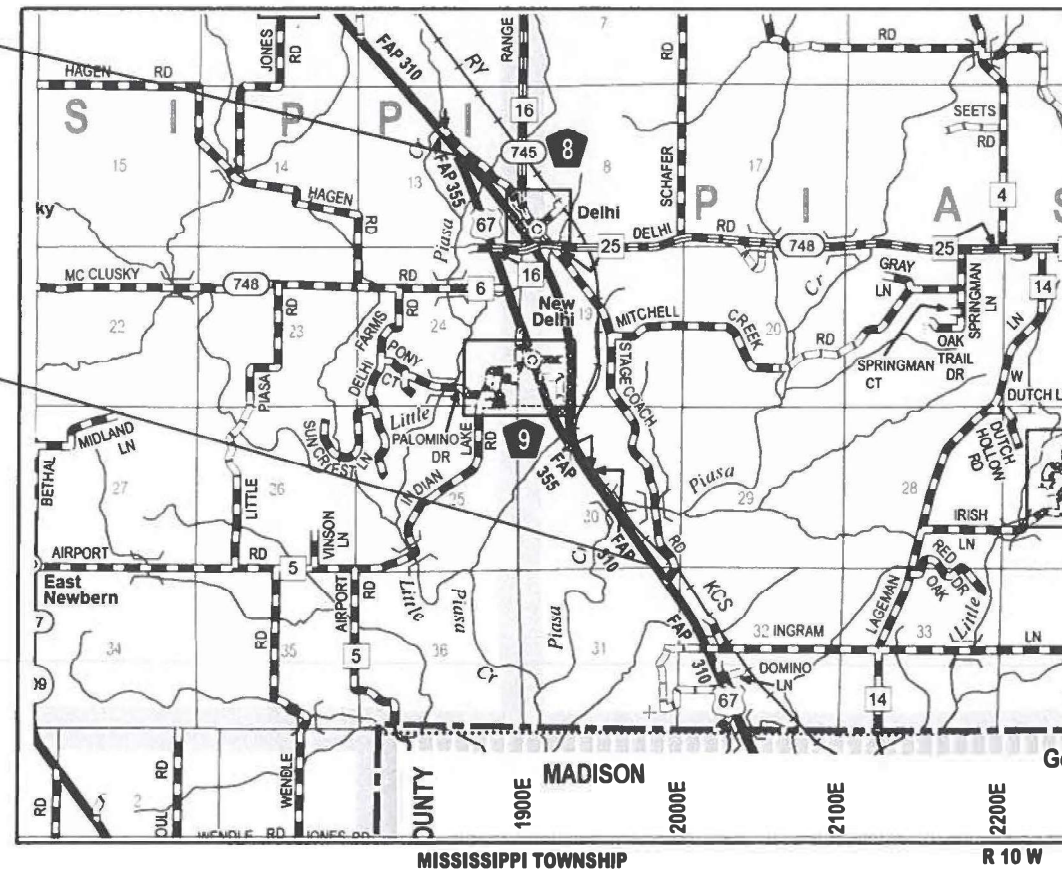
FAP ROUTE 355 (OLD US 67)
SECTION (259,47)Q
PROJECT STP-47ED(024)
SMART OVERLAY
JERSEY COUNTY

C-98-097-23



BEGIN PROJECT - 0.0 M.S.
0.6 MI N. OF DELHI RD.
LAT: 39.051333
LONG: -90.265372

END PROJECT - 1.98 M.S.
HILLTOP LN.
LAT: 39.025108
LONG: -90.252071



FULL SIZE PLANS HAVE BEEN PREPARED USING STANDARD ENGINEERING SCALES. REDUCED SIZED PLANS WILL NOT CONFORM TO STANDARD SCALES. IN MAKING MEASUREMENTS ON REDUCED PLANS, THE ABOVE SCALES MAY BE USED.

J.U.L.I.E.
JOINT UTILITY LOCATION INFORMATION FOR EXCAVATION
1-800-892-0123
OR 811

PROJECT ENGINEER: BILLIE OWEN
PROJECT MANAGER: MEIWU AN

CONTRACT NO. 76T22

GROSS LENGTH = 10454.40 FT. = 1.98 MILE
NET LENGTH = 10454.40 FT. = 1.98 MILE

STATE OF ILLINOIS
DEPARTMENT OF TRANSPORTATION

SUBMITTED October 15 2023
Mark B. Brown
REGIONAL ENGINEER

February 2, 2024
John A. Etk
ENGINEER OF DESIGN AND ENVIRONMENT

February 2, 2024
Stephen McQuinn
DIRECTOR OF HIGHWAYS PROJECT IMPLEMENTATION

PRINTED BY THE AUTHORITY
OF THE STATE OF ILLINOIS

INDEX OF SHEETS

1. COVER
2. INDEX OF SHEETS, HIGHWAY STANDARDS, GENERAL NOTES & COMMITMENTS
- 3-4. SUMMARY OF QUANTITIES
- 5-6. TYPICAL SECTIONS
- 7-8. SCHEDULE OF QUANTITIES
9. LOCATION MAP
- 10-11. SURVEY MONUMENT COVER DETAILS

HIGHWAY STANDARDS

- 000001-08 STANDARD SYMBOLS, ABBREVIATIONS AND PATTERNS
- 001006 DECIMAL OF AN INCH AND OF A FOOT
- 420001-10 PAVEMENT JOINTS
- 442201-03 CLASS C AND D PATCHES
- 701011-04 OFF-ROAD MOVING OPERATIONS, 2L, 2W, DAY ONLY
- 701201-05 LANE CLOSURE 2L, 2W, DAY ONLY, FOR SPEEDS \geq 45 MPH
- 701301-04 LANE CLOSURE, 2L, 2W, SHORT TERM OPERATIONS
- 701306-04 LANE CLOSURE, 2L, 2W, SLOW MOVING OPERATIONS DAY ONLY, FOR SPEEDS \geq 45 MPH
- 701311-03 LANE CLOSURE 2L, 2W, MOVING OPERATIONS - DAY ONLY
- 701336-07 LANE CLOSURE 2L, 2W, WORK AREAS IN SERIES, FOR SPEEDS \geq 45 MPH
- 701901-09 TRAFFIC CONTROL DEVICES
- 780001-05 TYPICAL PAVEMENT MARKINGS
- 781001-04 TYPICAL APPLICATIONS RAISED REFLECTIVE PAVEMENT MARKERS

GENERAL NOTES

1. UTILITIES KNOWN TO HAVE FACILITIES WITHIN THE PROJECT AREA:

UTILITY	ABOVE GROUND	BELOW GROUND
EVERSTREAM GLC HOLDING COMPANY LLC (COMMUNICATIONS)	X	X
FRONTIER COMMUNICATIONS (COMMUNICATIONS)	X	X
JERSEY COUNTY RURAL WATER COMPANY (WATER)		X
M.J.M. ELECTRIC COOPERATIVE, INC. (ELECTRIC)	X	X
2. NO SURVEY WAS PERFORMED FOR THIS PROJECT AND THE PLANS WERE CREATED USING MICROFILM AND FIELD MEASUREMENTS.
3. HIGH EARLY STRENGTH CONCRETE FOR PAVEMENT PATCHING WILL BE ALLOWED.
4. THE PROPOSED PAVEMENT MARKING SHALL MATCH THE LOCATIONS OF THE EXISTING MARKING.
5. ALL TURF AREAS DISTURBED BY THE CONTRACTOR SHALL BE SEEDED WITH THE APPROPRIATE EROSION CONTROL AS DIRECTED BY THE ENGINEER, AT THE CONTRACTOR'S EXPENSE.
6. THE RESIDENT ENGINEER SHALL VERIFY THE EXISTENCE OF HIGHWAY LIGHTING, INTELLIGENT TRANSPORTATION SYSTEMS (I.T.S.) UTILITIES, AND/OR ELECTRICAL CABLES ASSOCIATED WITH TRAFFIC SIGNALS WITHIN THE PROJECT LIMITS. IF ANY OF THESE EXIST WITHIN THE PROJECT LIMITS, AND IF THESE ITEMS REQUIRE LOCATING, THE CONTRACTOR SHALL BE DIRECTED TO DO SO ACCORDING TO SECTION 803 OF THE STANDARD SPECIFICATIONS. THIS WORK SHALL BE PAID FOR ACCORDING TO ARTICLE 109.04 OF THE STANDARD SPECIFICATIONS."
7. NO OVERNIGHT CLOSURES SHALL BE ALLOWED.
8. THE CONTACTOR SHALL EXERCISE CARE AT ALL SIDE STREETS AND ENTRANCES DURING TO ENSURE THAT THE FINAL SURFACE WILL MEET THE EXISTING SIDE STREETS AND ENTRANCES.
9. PARTIAL DEPTH PATCHING SHALL TAKE PLACE AFTER THE CONTRACTOR HAS MILLED.

MIXTURE REQUIREMENTS

ROUTE	FAP 355 (OLD US 067)
SECTION	(259,47)Q
COUNTY	JERSEY
CONTRACT	76122

DESCRIPTION	SMART - OLD US 067 - FROM 0.6 MI N. OF DELHI RD. TO HILLTOP LN.
-------------	---

MIXTURE USE	SURFACE	PATCHING	PARTIAL DEPTH PATCHING
AC/PG	PG 64-22	PG 64-22	PG 64-22
DESIGN AIR VOIDS	4.0% @ Ndes=70	4.0% @ Ndes=70	4.0% @ Ndes=70
MIX COMPOSITION (GRADATION MIXTURE)	IL 9.5	IL 19.0	IL 9.5
FRICTION AGG	MIXTURE "C"	MIXTURE "B"	MIXTURE "C"
QUALITY MGMT PROGRAM	QCP	QC/QA	QC/QA
MatTranDev Required?	yes	no	no

PLAN QUANTITIES FOR HOT-MIX ASPHALT ITEMS ARE CALCULATED USING A UNIT WEIGHT OF 112 LB/SQ YD/ IN (59.8 KG/SQ M/25 MM THICKNESS).

ANY QCP PAY ITEM THAT HAS A QUANTITY OF 1600 TONS OR LESS WILL HAVE TWO SUBLOTS EACH OF WHICH WILL BE HALF OF THE PLAN QUANTITY OR HALF OF THE ADJUSTED QUANTITY BY THE RESIDENT ENGINEER/TECHNICIAN

COMMITMENTS

NONE

REV. - MS

MODEL: Index of Sheets [Sheet]
FILE NAME: c:\pw_work\kavish\murray\ad050002\08161722-shi-index.dgn

USER NAME = Diana.Murray	DESIGNED -	REVISED -
	DRAWN -	REVISED -
PLOT SCALE = 0.16666633 / in.	CHECKED -	REVISED -
PLOT DATE = 12/14/2023	DATE -	REVISED -

**STATE OF ILLINOIS
DEPARTMENT OF TRANSPORTATION**

**INDEX OF SHEETS, HIGHWAY STANDARDS
GENERAL NOTES & COMMITMENTS**

SCALE: SHEET 1 OF 1 SHEETS STA. TO STA.

F.A.P. RTE.	SECTION	COUNTY	TOTAL SHEETS	SHEET NO.
355	(259,47)Q	JERSEY	11	2
CONTRACT NO. 76122				
ILLINOIS FED. AID PROJECT				

(259,47)Q

CODE NO.	ITEM	UNIT	80% FED 20% STATE		CONSTR. CODE
			TOTAL QUANTITY	ROADWAY	
				0005	RURAL
40600290	BITUMINOUS MATERIALS (TACK COAT)	POUND	15587	15587	
40600370	LONGITUDINAL JOINT SEALANT	FOOT	14017	14017	
40604052	HOT-MIX ASPHALT SURFACE COURSE, IL-9.5, MIX "C", N70	TON	2910	2910	
44000155	HOT-MIX ASPHALT SURFACE REMOVAL, 1 1/2"	SQ YD	34637	34637	
44200201	PAVEMENT PATCHING, TYPE I, 17 INCH	SQ YD	7	7	
44200202	PAVEMENT PATCHING, TYPE II, 17 INCH	SQ YD	65	65	
44200204	PAVEMENT PATCHING, TYPE III, 17 INCH	SQ YD	72	72	
44200206	PAVEMENT PATCHING, TYPE IV, 17 INCH	SQ YD	76	76	
67100100	MOBILIZATION	L SUM	1	1	
70100450	TRAFFIC CONTROL AND PROTECTION, STANDARD 701201	L SUM	1	1	
70100460	TRAFFIC CONTROL AND PROTECTION, STANDARD 701306	L SUM	1	1	
70100600	TRAFFIC CONTROL AND PROTECTION, STANDARD 701336	L SUM	1	1	
70300100	SHORT TERM PAVEMENT MARKING	FOOT	2636	2636	
70300150	SHORT TERM PAVEMENT MARKING REMOVAL	SQ FT	549	549	

CODE NO.	ITEM	UNIT	80% FED 20% STATE		CONSTR. CODE
			TOTAL QUANTITY	ROADWAY	
				0005	RURAL
70300211	TEMPORARY PAVEMENT MARKING LETTERS AND SYMBOLS - PAINT	SQ FT	70	70	
70300231	TEMPORARY PAVEMENT MARKING - LINE 5"- PAINT	FOOT	60828	60828	
70300261	TEMPORARY PAVEMENT MARKING - LINE 12"- PAINT	FOOT	768	768	
* 78000100	THERMOPLASTIC PAVEMENT MARKING - LETTERS AND SYMBOLS	SQ FT	70	70	
* 78000300	THERMOPLASTIC PAVEMENT MARKING - LINE 5"	FOOT	60828	60828	
* 78000600	THERMOPLASTIC PAVEMENT MARKING - LINE 12"	FOOT	768	768	
* 78100100	RAISED REFLECTIVE PAVEMENT MARKER	EACH	288	288	
78300200	RAISED REFLECTIVE PAVEMENT MARKER REMOVAL	EACH	288	288	
78300202	PAVEMENT MARKING REMOVAL - WATER BLASTING	SQ FT	65366	65366	
X4406040	PARTIAL DEPTH REMOVAL, TYPE I, 4"	SQ YD	117	117	
X4406240	PARTIAL DEPTH REMOVAL, TYPE II, 4"	SQ YD	222	222	
X4406440	PARTIAL DEPTH REMOVAL, TYPE III, 4"	SQ YD	76	76	
X4421000	PARTIAL DEPTH PATCHING	TON	90	90	
Z0034105	MATERIAL TRANSFER DEVICE	TON	2910	2910	

* SPECIALTY ITEM

MODEL - Summary of Quantities (Sheet)
FILE NAME - c:\p\work\wv\murray\adad090002\0876722-shr-SOC.dgn

USER NAME = Diana.Murray	DESIGNED -	REVISED -
PLOT SCALE = 0.16666633' / in.	DRAWN -	REVISED -
PLOT DATE = 12/15/2023	CHECKED -	REVISED -
	DATE -	REVISED -

**STATE OF ILLINOIS
DEPARTMENT OF TRANSPORTATION**

SUMMARY OF QUANTITIES

SCALE: SHEET 1 OF 2 SHEETS STA. TO STA.

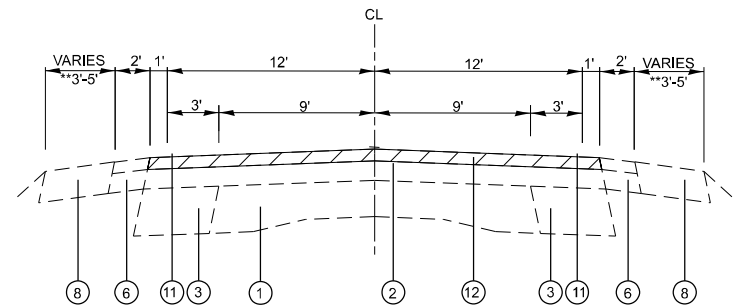
F.A.P. RTE.	SECTION	COUNTY	TOTAL SHEETS	SHEET NO.
355	(259.47)Q	JERSEY	11	3
CONTRACT NO. 76T22				
ILLINOIS FED. AID PROJECT				

				80% FED	CONSTR. CODE
				20% STATE	
CODE NO.	ITEM	UNIT	TOTAL QUANTITY	ROADWAY	
				0005	RURAL
Z0070100	SURVEY MONUMENT COVER ASSEMBLY	EACH	4	4	
∅ Z0076600	TRAINEES	HOUR	1000	1000	
∅ Z0076604	TRAINEES TRAINING PROGRAM GRADUATE	HOUR	1000	1000	

∅ 0042

REV. - MS

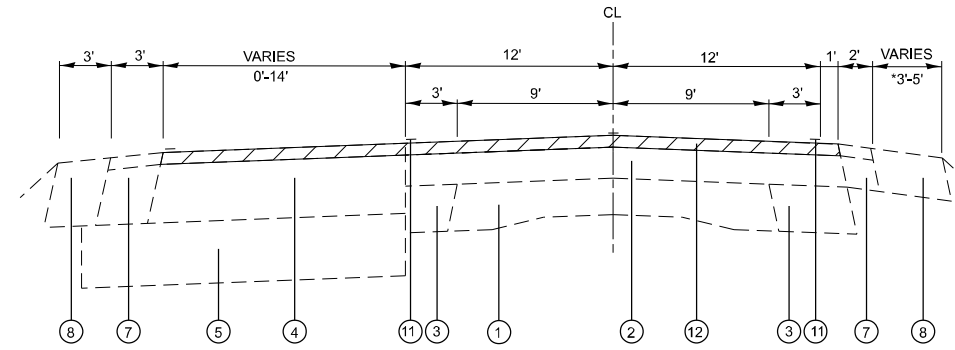
MODEL: SQCC-1 [Sheet]
FILE NAME: c:\p\work\pw\idomurray\ad090002\0876T22-shh-SQCC.dgn



EXISTING SECTION

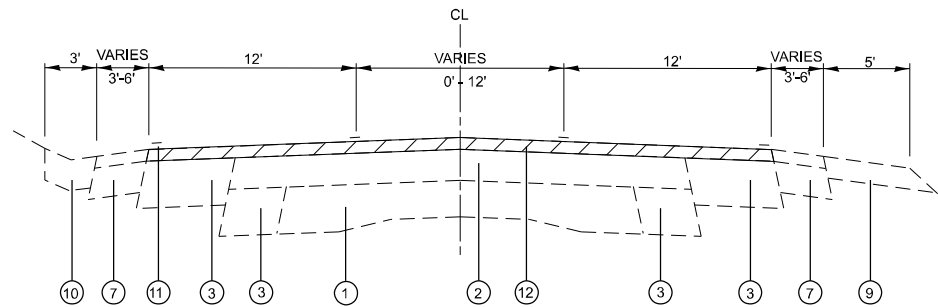
- 0.00 M.S. TO 0.54 M.S.
- 0.73 M.S. TO 0.82 M.S.
- 1.35 M.S. TO 1.94 M.S.

* THESE SECTIONS ARE SUPERELEVATED.
THERE WILL BE NO CHANGE IN THE SLOPE.



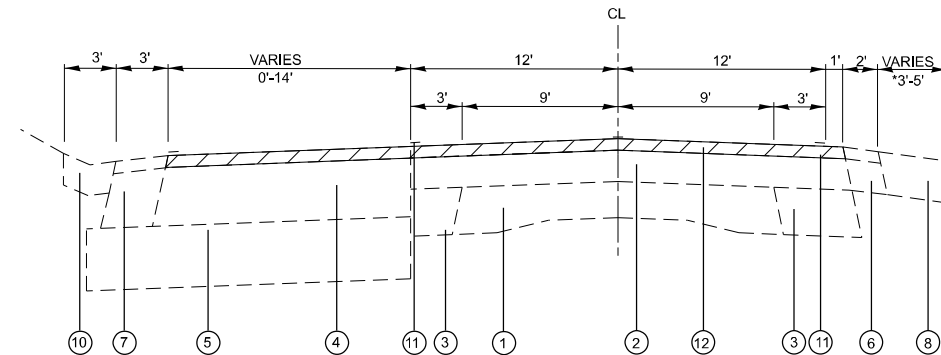
EXISTING SECTION

0.82 M.S. TO 0.93 M.S.



EXISTING SECTION

0.54 M.S. TO 0.73 M.S.
1.14 M.S. TO 1.35 M.S.

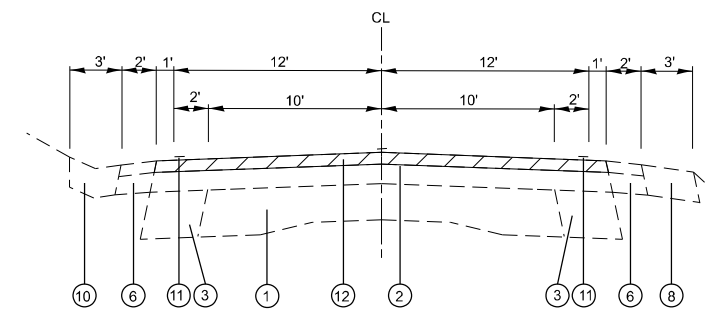


EXISTING SECTION

0.93 M.S. TO 1.09 M.S.

LEGEND

- ① EXISTING PCC PAVEMENT, 9"-7"-9"
- ② EXISTING BITUMINOUS RESURFACING, VARIES 3"-8"
- ③ EXISTING BITUMINOUS BASE COURSE WIDENING, 9"
- ④ EXISTING HMA (FULL DEPTH), 13-1/2" to 14"
- ⑤ EXISTING LIME MODIFIED SOILS, 12"
- ⑥ EXISTING BITUMINOUS SHOULDER, 6"
- ⑦ EXISTING BITUMINOUS SHOULDER, 8"
- ⑧ EXISTING AGGREGATE SHOULDER, 6"
- ⑨ EXISTING AGGREGATE SHOULDERS TYPE B
- ⑩ EXISTING CONCRETE GUTTER, TYPE A
- ⑪ EXISTING PAVEMENT MARKING LINE
- ⑫ PROPOSED HMA SURFACE REMOVAL, 1-1/2"
- ⑬ PROPOSED HMA SURFACE COURSE, MIX "C", N70 (1-1/2")
- ⑭ PROPOSED BITUMINOUS MATERIALS (TACK COAT)
- ⑮ PROPOSED LONGITUDINAL JOINT SEALANT
- ⑯ PROPOSED PAVEMENT MARKING



EXISTING SECTION

1.09 M.S. TO 1.14 M.S.
1.94 M.S. TO 1.98 M.S.

MODEL: Typical (Sheet)
FILE NAME: c:\p\work\pav\murray\road\090002\08\67\22-shh-typical.dgn

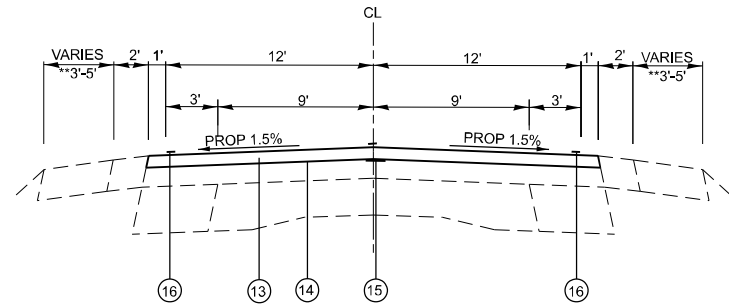
USER NAME = Diana.Murray	DESIGNED -	REVISED -
DRAWN -	REVISOR -	
PLOT SCALE = 0.16666633' / in.	CHECKED -	REVISED -
PLOT DATE = 12/14/2023	DATE -	REVISED -

**STATE OF ILLINOIS
DEPARTMENT OF TRANSPORTATION**

TYPICAL SECTIONS

SCALE: SHEET 1 OF 2 SHEETS STA. TO STA.

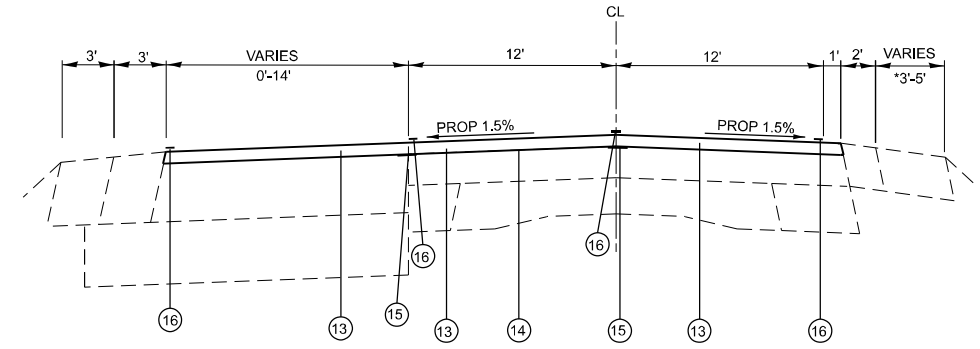
F.A.P. RTE.	SECTION	COUNTY	TOTAL SHEETS	SHEET NO.
355	(259.47)Q	JERSEY	11	5
CONTRACT NO. 76T22				
ILLINOIS FED. AID PROJECT				



PROPOSED SECTION

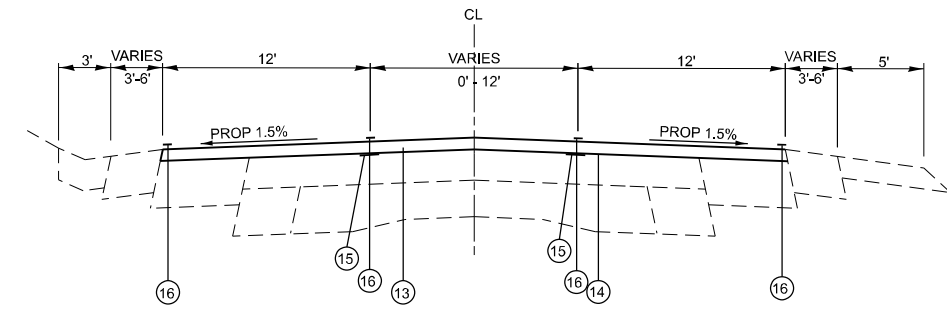
- 0.00 M.S. TO 0.54 M.S.
- 0.73 M.S. TO 0.82 M.S.
- 1.35 M.S. TO 1.94 M.S.

* THESE SECTIONS ARE SUPERELEVATED.
THERE WILL BE NO CHANGE IN THE SLOPE.



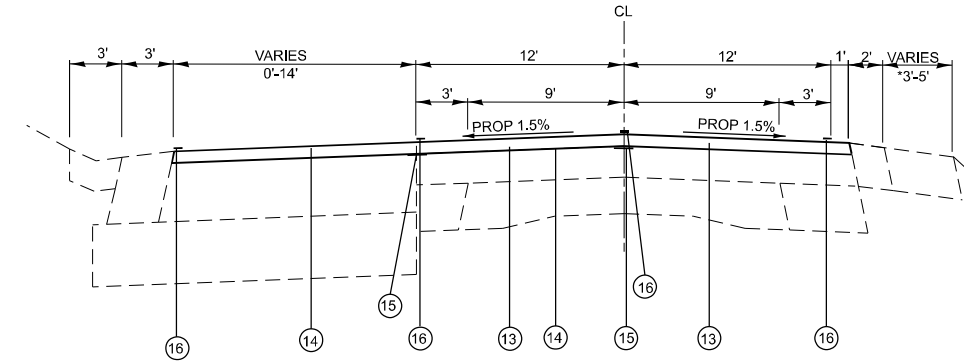
PROPOSED SECTION

0.82 M.S. TO 0.93 M.S.



PROPOSED SECTION

0.54 M.S. TO 0.73 M.S.
1.14 M.S. TO 1.35 M.S.

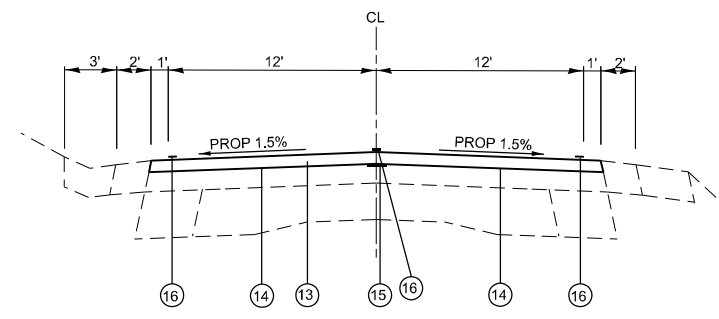


PROPOSED SECTION

0.93 M.S. TO 1.09 M.S.

LEGEND

- ① EXISTING PCC PAVEMENT, 9"-7"-9"
- ② EXISTING BITUMINOUS RESURFACING, VARIES 3"-8"
- ③ EXISTING BITUMINOUS BASE COURSE WIDENING, 9"
- ④ EXISTING HMA (FULL DEPTH), 13-1/2" to 14"
- ⑤ EXISTING LIME MODIFIED SOILS, 12"
- ⑥ EXISTING BITUMINOUS SHOULDER, 6"
- ⑦ EXISTING BITUMINOUS SHOULDER, 8"
- ⑧ EXISTING AGGREGATE SHOULDER, 6"
- ⑨ EXISTING AGGREGATE SHOULDERS TYPE B
- ⑩ EXISTING CONCRETE GUTTER, TYPE A
- ⑪ EXISTING PAVEMENT MARKING LINE
- ⑫ PROPOSED HMA SURFACE REMOVAL, 1-1/2"
- ⑬ PROPOSED HMA SURFACE COURSE, MIX "C", N70 (1-1/2")
- ⑭ PROPOSED BITUMINOUS MATERIALS (TACK COAT)
- ⑮ PROPOSED LONGITUDINAL JOINT SEALANT
- ⑯ PROPOSED PAVEMENT MARKING



PROPOSED SECTION

1.09 M.S. TO 1.14 M.S.
1.94 M.S. TO 1.98 M.S.

MODEL: Typical=1 [Sheet]
FILE NAME: c:\p\work\murray\090002\08\67\22-shh-typical.dgn

USER NAME = Diana.Murray	DESIGNED -	REVISED -
PLOT SCALE = 0.16666833 / in.	DRAWN -	REVISED -
PLOT DATE = 12/14/2023	CHECKED -	REVISED -
	DATE -	REVISED -

**STATE OF ILLINOIS
DEPARTMENT OF TRANSPORTATION**

TYPICAL SECTIONS

SCALE: SHEET 2 OF 2 SHEETS STA. TO STA.

F.A.P. RTE.	SECTION	COUNTY	TOTAL SHEETS	SHEET NO.
355	(259.47)Q	JERSEY	11	6
CONTRACT NO. 76T22				
ILLINOIS FED. AID PROJECT				

PAVEMENT PATCHING SCHEDULE							
MLE STATION	LANE	WIDTH (FT)	LENGTH (FT)	PAVEMENT PATCHING, TYPE I 17" (SQ YD)	PAVEMENT PATCHING, TYPE II 17" (SQ YD)	PAVEMENT PATCHING, TYPE III 17" (SQ YD)	PAVEMENT PATCHING, TYPE IV 17" (SQ YD)
0.73	NB	12	4		6		
0.78	SB	12	4		6		
0.90	SB	12	4		6		
1.03	NB	12	6		8		
1.03	SB	12	6		8		
1.04	NB	6	4	3			
1.04	SB	12	4		6		
1.05	NB	6	4	3			
1.10	NB	18	8			16	
1.10	SB	18	8			16	
1.12	NB	12	4		6		
1.12	MEDIAN	12	4		6		
1.12	SB	12	4		6		
1.15	SB	6	100				67
1.27	NB	12	12			16	
1.27	SB	12	12			16	
SUBTOTAL				6	58	64	67
12% (SUBTOTAL)*				1	7	8	9
TOTAL				7	65	72	76

*NOTE: AN ADDITIONAL 12% HAS BEEN ADDED TO THE FINAL PATCHING QUANTITY TO ALLOW FOR WINTER DAMAGE.

PARTIAL DEPTH PATCHING SCHEDULE							
MLE STATION	LANE	WIDTH (FT)	LENGTH (FT)	PARTIAL DEPTH REMOVAL TYPE I 4" (SQ YD)	PARTIAL DEPTH REMOVAL TYPE II 4" (SQ YD)	PARTIAL DEPTH REMOVAL TYPE III 4" (SQ YD)	PARTIAL DEPTH PATCH (TON)
0.85	NB	6	50		34		7.5
0.87	NB	6	10	7			1.5
0.87	SB	6	10	7			1.5
0.90	NB	6	10	7			1.5
0.91	SB	6	30		20		4.5
1.06	NB	6	4	3			0.6
1.06	SB	12	4	6			1.2
1.07	NB	6	6	4			0.9
1.07	SB	12	6	4	8		1.8
1.07	NB	6	6	4			0.9
1.07	SB	12	6		8		1.8
1.08	NB	12	6		8		1.8
1.08	SB	12	6		8		1.8
1.13	NB	12	4	6			1.2
1.13	MEDIAN	12	4	6			1.2
1.13	SB	12	4	6			1.2
1.15	SB	6	100			67	14.9
1.18	SB	6	60		40		9.0
1.25	NB	12	12		16		3.6
1.29	NB	12	4	6			1.2
1.29	SB	12	4	6			1.2
1.30	NB	12	4	6			1.2
1.30	SB	12	4	6			1.2
1.35	NB	12	4	6			1.2
1.35	SB	12	4	6			1.2
1.36	NB	12	6		8		1.8
1.36	SB	12	6		8		1.8
1.37	NB	12	6		8		1.8
1.51	NB	12	6		8		1.8
1.51	SB	12	6		8		1.8
1.59	NB	12	6		8		1.8
1.59	SB	12	6		8		1.8
1.84	NB	12	4	6			1.2
1.84	SB	12	4	6			1.2
SUBTOTAL				104	198	67	80
12% SUBTOTAL*				13	24	9	10
TOTAL				117	222	76	90

*NOTE: AN ADDITIONAL 12% HAS BEEN ADDED TO THE FINAL PATCHING QUANTITY TO ALLOW FOR WINTER DAMAGE.

MODEL: SCHEDULES (Sheet)
FILE NAME: c:\p\work\pav\sch\murray\road\090002\0876722-shr-schedule.dgn

USER NAME = Diana.Murray	DESIGNED -	REVISED -
	DRAWN -	REVISED -
PLOT SCALE = 0.16666633' / in.	CHECKED -	REVISED -
PLOT DATE = 12/8/2023	DATE -	REVISED -

STATE OF ILLINOIS
DEPARTMENT OF TRANSPORTATION

SCHEDULE OF QUANTITIES

SCALE: SHEET 1 OF 2 SHEETS STA. TO STA.

F.A.P. RTE.	SECTION	COUNTY	TOTAL SHEETS	SHEET NO.
355	(259.47)Q	JERSEY	11	7
CONTRACT NO. 76T22				
ILLINOIS FED. AID PROJECT				

MAINLINE RESURFACING SCHEDULE

LOCATION			LENGTH	WIDTH	HMA SURFACE REMOVAL, 1-1/2"	BITUMINOUS MATERIALS (TACK COAT)	HOT-MIX ASPHALT SURFACE COURSE, IL-9.5, N70 1-1/2"	LONGITUDINAL JOINT SEALANT
M.S.	TO	M.S.	(FOOT)	(FOOT)	SQ YD	(POUND)	TON	(FOOT)
OLD US 67								
0.00	TO	0.54	2834	26	8188	3684.7	687.8	2834
0.54	TO	0.73	1020	36	4080	1836.0	342.7	2040
0.73	TO	0.82	486	26	1404	631.8	117.9	486
0.82	TO	0.93	565	39	2448	1101.8	205.7	1130
0.93	TO	1.09	865	39	3748	1686.8	314.9	1730
1.09	TO	1.14	240	26	693	312.0	58.2	240
1.14	TO	1.35	1113	36	4452	2003.4	374.0	2226
1.35	TO	1.98	3331	26	9623	4330.3	808.3	3331
TOTAL:					34637	15587	2910	14017

RAISED REFLECTIVE PAVEMENT MARKER SCHEDULE

LOCATION			RAISED REFLECTOR PAVEMENT MARKER ONE-WAY CRYSTAL	RAISED REFLECTOR PAVEMENT MARKER ONE-WAY AMBER	RAISED REFLECTOR PAVEMENT MARKER TWO-WAY AMBER	RAISED REFLECTOR PAVEMENT MARKER REMOVAL
M.S.	TO	M.S.	(EACH)	(EACH)	(EACH)	(EACH)
OLD US 67						
0.00	TO	0.54			35	35
0.54	TO	0.73		41	8	49
0.73	TO	0.82			6	6
0.82	TO	1.09		68	12	80
1.09	TO	1.14			3	3
1.14	TO	1.35		51	14	65
1.35	TO	1.98			42	42
0.54	TO	0.54				
0.54	TO	0.54	3			3
0.54	TO	0.54	5			5
SUBTOTAL:			8	160	120	288
TOTAL:				288		288

PAVEMENT MARKING SCHEDULE

LOCATION			THERMOPLASTIC AND TEMPORARY PAVEMENT MARKING						SHORT-TERM PAVEMENT MARKING		SHORT-TERM PAVEMENT MARKING REMOVAL (1 LIFT)	PAVEMENT MARKING REMOVAL WATER BLASTING (1 LIFT)	
			LETTERS & SYMBOLS	LINE, 5" SOLID (WHITE)	LINE, 5" SKIP-DASH (YELLOW)	LINE, 5" DOUBLE (YELLOW)	LINE, 5" NB NO PASS (YELLOW)	LINE, 5" SB NO PASS (YELLOW)	LINE, 12" DIAGONAL (YELLOW)	WHITE PAVEMENT MARKING (2 LIFTS)			YELLOW PAVEMENT MARKING (2 LIFTS)
M.S.	TO	M.S.	SQ FT	FOOT	FOOT	FOOT	FOOT	FOOT	FOOT	FOOT	SQ FT	SQ FT	
OLD US 067													
0.000	TO	0.537		5193.8	4581.2	1320.0	3469.0	3483.0			515.3	107.4	8069.6
0.537	TO	0.730	17.6	1765.0		3280.0			207.0		185.5	38.6	3693.4
0.552	TO	0.628				1760.0					73.3	15.3	1466.7
0.628	TO	0.651				240.0					21.8	4.5	200.0
0.651	TO	0.729				1280.0					74.5	15.5	1066.7
0.730	TO	0.822		1092.0		972.0				21.8	88.4	23.0	1265.0
0.822	TO	1.093	26.4	2935.0		5088.0			352.0	36.4	260.0	61.7	5841.3
0.822	TO	0.920				2076.0					94.2	19.6	1730.0
0.920	TO	0.969				400.0					46.9	9.8	333.3
0.969	TO	1.093				2612.0					118.7	24.7	2176.7
1.093	TO	1.138		480.0		480.0					43.6	9.1	600.0
1.138	TO	1.349	26.4	2236.0		3752.0			209.0	45.5	202.4	51.6	4293.7
1.138	TO	1.201				1324.0					60.2	12.5	1103.3
1.201	TO	1.258				500.0					54.5	11.4	416.7
1.258	TO	1.349				1928.0					87.6	18.3	1606.7
1.349	TO	1.424		719.0	99.3		397.0				72.2	15.0	506.4
1.424	TO	1.796		3785.0	491.3						357.3	74.4	1781.8
1.796	TO	1.980		1878.0	242.3			969.0			176.2	36.7	1287.2
SUBTOTAL:			70.4	20083.8	5414.0	27012.0	3866.0	4452.0	768.0	103.6	2532.6	549.2	65366.4
TOTAL:			70			60828			768		2636	549	65366

MODEL: SCHEDULES-1 [Sheet]
FILE NAME: c:\p\work\murray\murray\002\08\722-sh-reschedule.dgn

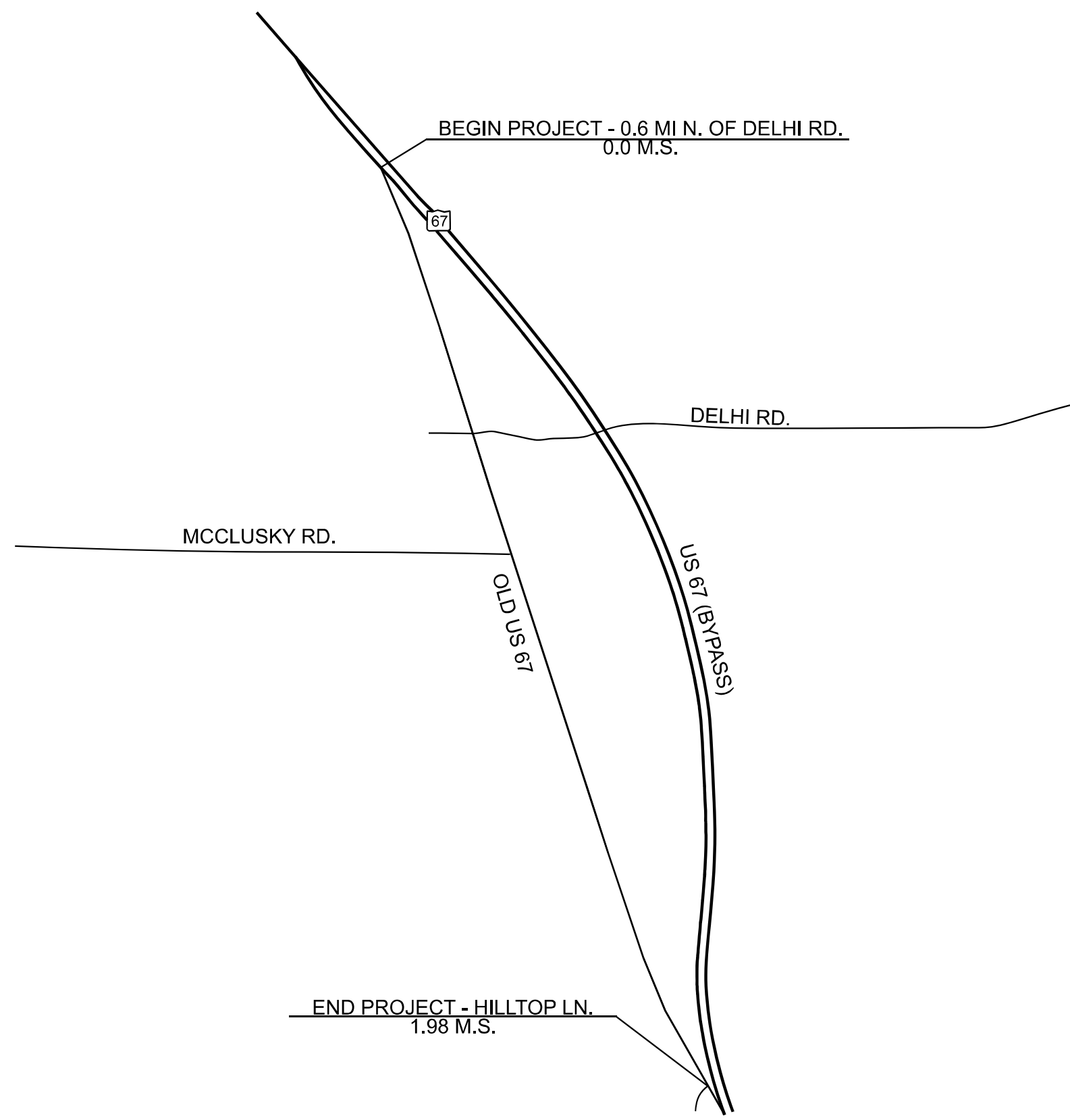
USER NAME = Diana.Murray	DESIGNED -	REVISED -
PLOT SCALE = 0.1666833' / in.	DRAWN -	REVISED -
PLOT DATE = 12/15/2023	CHECKED -	REVISED -
	DATE -	REVISED -

**STATE OF ILLINOIS
DEPARTMENT OF TRANSPORTATION**

SCHEDULE OF QUANTITIES

SCALE: SHEET 2 OF 21 SHEETS STA. TO STA.

F.A.P. RTE.	SECTION	COUNTY	TOTAL SHEETS	SHEET NO.
355	(259.47)Q	JERSEY	11	8
CONTRACT NO. 76T22				
ILLINOIS FED. AID PROJECT				



NOT TO SCALE

LOCATION MAP

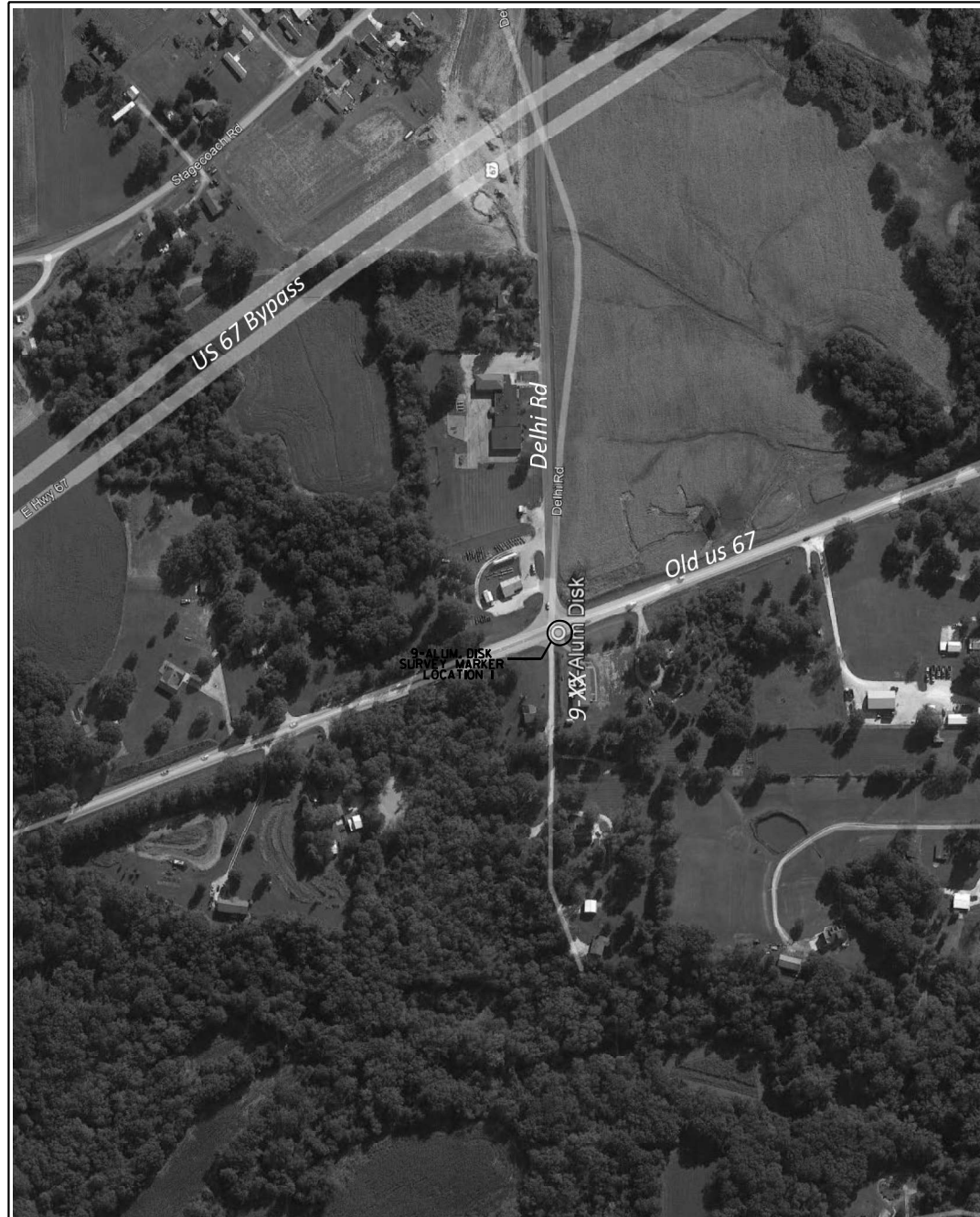
MODEL: DETAILS (Sheet)
FILE NAME: c:\p\work\murray\road\090002\0876722-sh1-details.dgn

USER NAME = Diana.Murray	DESIGNED -	REVISED -
	DRAWN -	REVISED -
PLOT SCALE = 0.16666833' / in.	CHECKED -	REVISED -
PLOT DATE = 12/14/2023	DATE -	REVISED -

**STATE OF ILLINOIS
DEPARTMENT OF TRANSPORTATION**

LOCATION MAP			
SCALE:	SHEET 1	OF 1	SHEETS
	STA.		TO STA.

F.A.P. RTE. 355	SECTION (259.47)Q	COUNTY JERSEY	TOTAL SHEETS 11	SHEET NO. 9
CONTRACT NO. 76T22				
ILLINOIS FED. AID PROJECT				



NOT TO SCALE

SURVEY MONUMENT COVER DETAILS

MODEL: DETAILS-1 (Sheet)
FILE NAME: c:\p\work\murray\ad090002\0876722-shr-details.dgn

USER NAME = Diana.Murray	DESIGNED -	REVISED -
	DRAWN -	REVISED -
PLOT SCALE = 0.16666833' / in.	CHECKED -	REVISED -
PLOT DATE = 12/15/2023	DATE -	REVISED -

**STATE OF ILLINOIS
DEPARTMENT OF TRANSPORTATION**

**SURVEY MONUMENT
COVER DETAILS**

SCALE: SHEET 1 OF 2 SHEETS STA. TO STA.

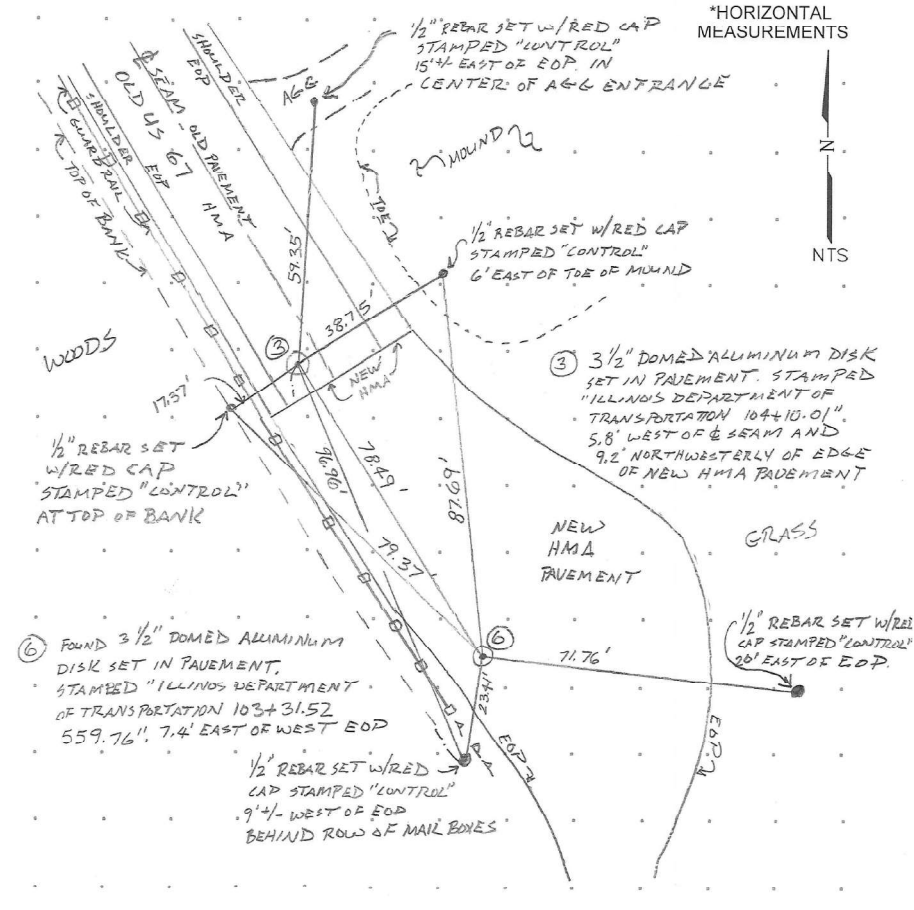
F.A.P. RTE.	SECTION	COUNTY	TOTAL SHEETS	SHEET NO.
355	(259,47)Q	JERSEY	11	10
CONTRACT NO. 76T22				
ILLINOIS FED. AID PROJECT				

(259,47)Q



FAP 310 (OLD US 67) Jersey County Section (259.47)Q Contract 76T22 D-98-053-23

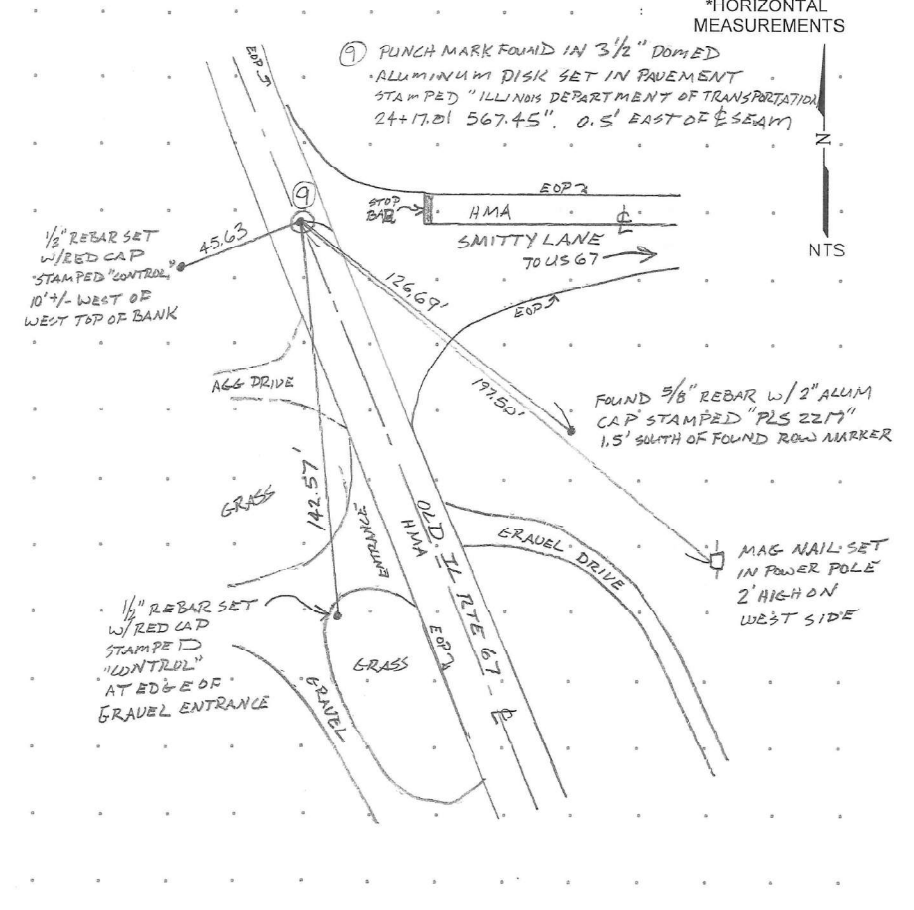
Point#: 3+6 Description: 3/2" ALUM DISK Crew: MAB/SES Date: 11/29/23



HA HENEGHAN AND ASSOCIATES, P.C.
1004 STATE HWY. 16
JERSEYVILLE, ILLINOIS 62052
PHONE NO. (618) 498-6418
FAX NO. (618) 498-6410
www.hoenr.com
DESIGN FIRM NUMBER 184-002652, EXPIRES APRIL 30, 2025

FAP 310 (OLD US 67) Jersey County Section (259.47)Q Contract 76T22 D-98-053-23

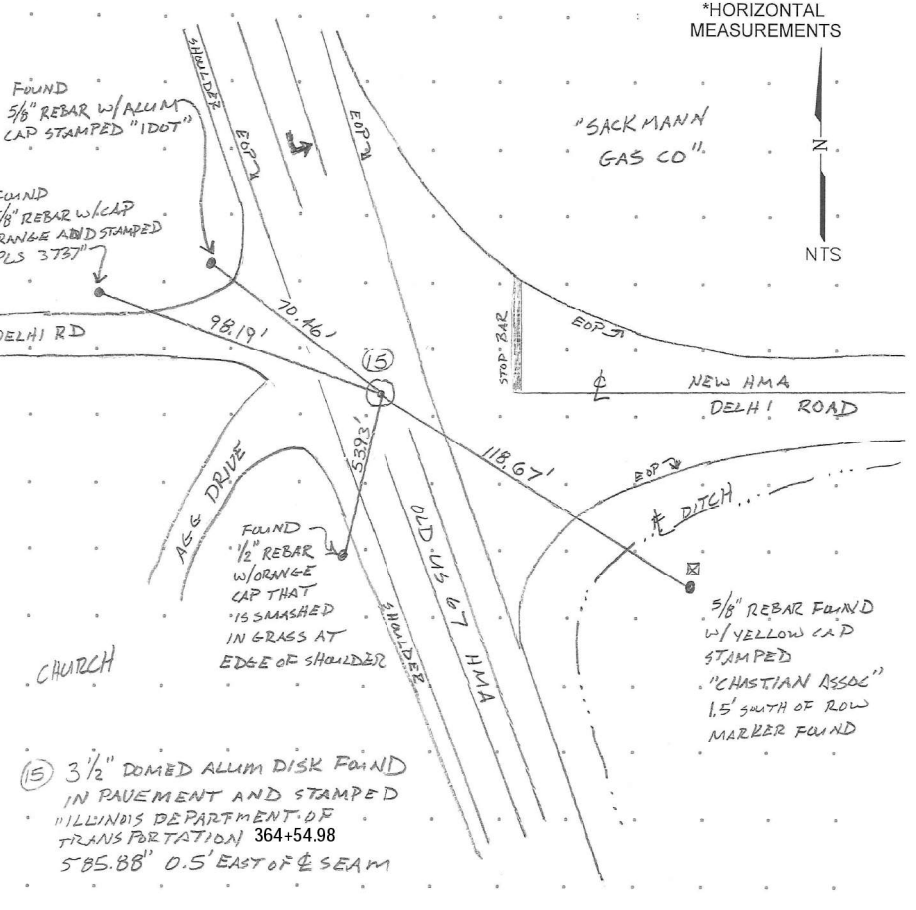
Point#: 9 Description: 3/2" ALUM DISK Crew: MAB/SES Date: 11/29/23



HA HENEGHAN AND ASSOCIATES, P.C.
1004 STATE HWY. 16
JERSEYVILLE, ILLINOIS 62052
PHONE NO. (618) 498-6418
FAX NO. (618) 498-6410
www.hoenr.com
DESIGN FIRM NUMBER 184-002652, EXPIRES APRIL 30, 2025

FAP 310 (OLD US 67) Jersey County Section (259.47)Q Contract 76T22 D-98-053-23

Point#: 15 Description: 3/2" ALUM DISK Crew: MAB/SES Date: 11/29/23



HA HENEGHAN AND ASSOCIATES, P.C.
1004 STATE HWY. 16
JERSEYVILLE, ILLINOIS 62052
PHONE NO. (618) 498-6418
FAX NO. (618) 498-6410
www.hoenr.com
DESIGN FIRM NUMBER 184-002652, EXPIRES APRIL 30, 2025

NOT TO SCALE

SURVEY MONUMENT COVER DETAILS

MODEL: Survey Monument (Sheet) FILE NAME: c:\paw_work\wfm\murray\road\090002\0816722-sh1-details.dgn

USER NAME = Diana.Murray	DESIGNED -	REVISED -
PLOT SCALE = 0.16666833' / in.	DRAWN -	REVISED -
PLOT DATE = 12/15/2023	CHECKED -	REVISED -
	DATE -	REVISED -

**STATE OF ILLINOIS
DEPARTMENT OF TRANSPORTATION**

**SURVEY MONUMENT
COVER DETAILS**

SCALE: SHEET 2 OF 2 SHEETS STA. TO STA.

F.A.P. RTE.	SECTION	COUNTY	TOTAL SHEETS	SHEET NO.
355	(259.47)Q	JERSEY	11	11
CONTRACT NO. 76T22				
ILLINOIS FED. AID PROJECT				