

STATE OF ILLINOIS
DEPARTMENT OF TRANSPORTATION

F.A.P. RTE.	SECTION	COUNTY	TOTAL SHEETS	SHEET NO.
66	FAP 0066 22 RS	MCHENRY	3	1
		ILLINOIS	CONTRACT NO. 62T62	

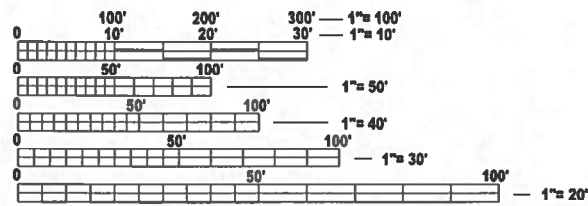
FOR INDEX OF SHEETS, SEE SHEET NO. 2

PROJECT LOCATED IN CITY OF HARVARD

TRAFFIC DATA:
US 14
2021 ADT = 10,300
POSTED AND DESIGN SPEED LIMIT = 30-55 MPH

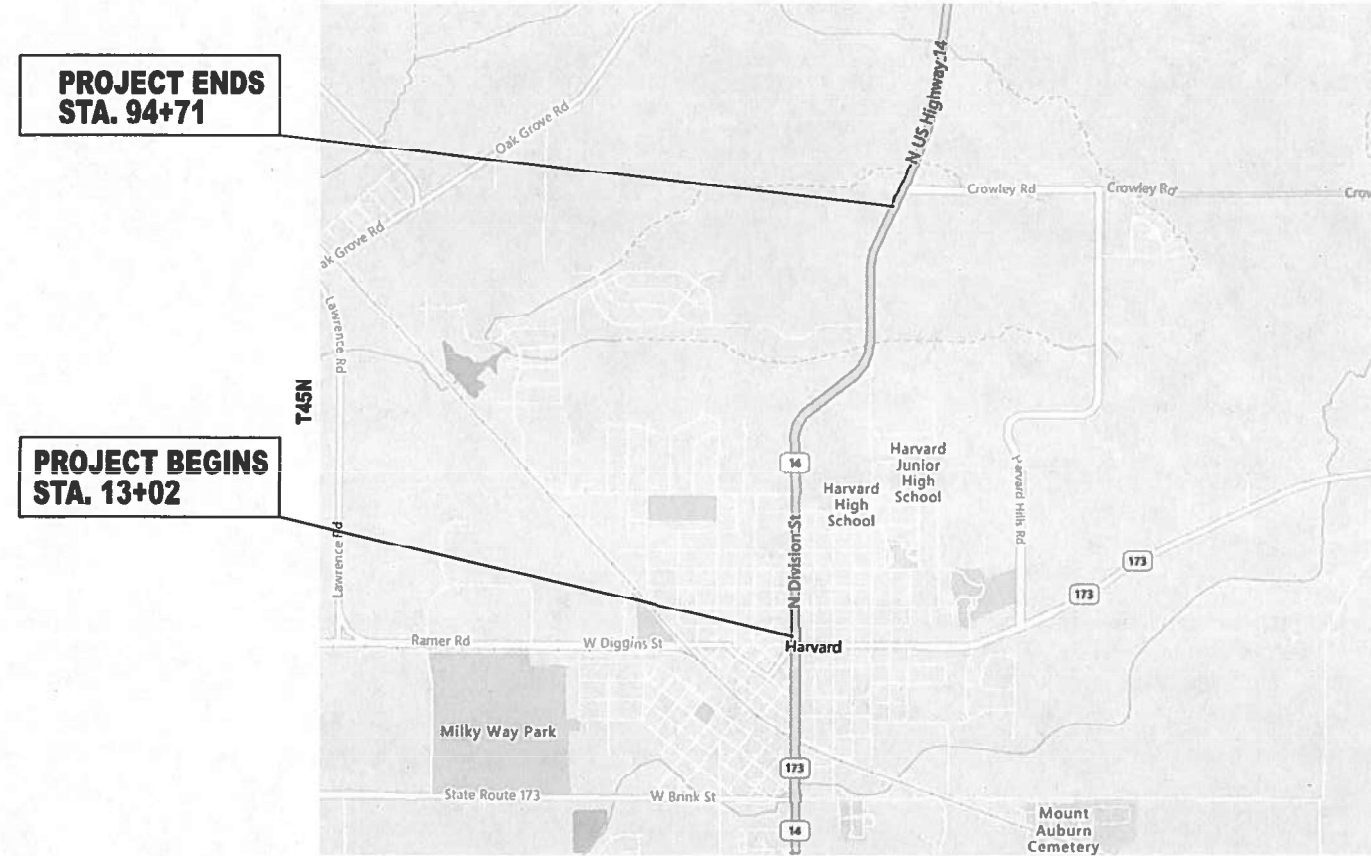
**PROPOSED
HIGHWAY PLANS**
F.A.P. ROUTE 66 (US 14 / DIVISION ST.)
CROWLEY RD TO IL 173/DIGGINS RD
SECTION FAP 0066 22 RS
PROJECT NHPP- 4UEA(806)
SMART OVERLAY AND ADA IMPROVMENTS
MCHENRY COUNTY

C-91-261-22
R5E



FULL SIZE PLANS HAVE BEEN PREPARED USING STANDARD ENGINEERING SCALES. REDUCED SIZED PLANS WILL NOT CONFORM TO STANDARD SCALES. IN MAKING MEASUREMENTS ON REDUCED PLANS, THE ABOVE SCALES MAY BE USED.

J.U.L.I.E.
JOINT UTILITY LOCATION INFORMATION FOR EXCAVATION
1-800-892-0123
OR 811



PROJECT ENDS
STA. 94+71

PROJECT BEGINS
STA. 13+02

PROJECT ENGINEER: DAN WILGREEN (847) 705-4240
PROJECT MANAGER: FAWAD AQUEEL

CHEMUNG TOWNSHIP
GROSS AND NET LENGTH = 8169 FT. = 1.55 MILE

CONTRACT NO. 62T62

STATE OF ILLINOIS
DEPARTMENT OF TRANSPORTATION

SUBMITTED DECEMBER 7 20 23
Gene Piro 1003
REGIONAL ENGINEER

February 2, 2024
Scott A. Etk
ENGINEER OF DESIGN AND ENVIRONMENT

February 2, 2024
Stephen M. Smith
DIRECTOR OF HIGHWAYS PROJECT IMPLEMENTATION

PRINTED BY THE AUTHORITY
OF THE STATE OF ILLINOIS

INDEX OF SHEETS

STATE STANDARDS

GENERAL NOTES

SHEET NO.

DESCRIPTION

STANDARD NO.

DESCRIPTION

BEFORE STARTING ANY EXCAVATION, THE CONTRACTOR SHALL CALL "JULIE AT (800) 892-0123 OR 811 FOR FIELD LOCATIONS OF BURIED ELECTRIC, TELEPHONE AND GAS FACILITIES, (48 HOURS NOTIFICATION IS REQUIRED). THE CONTRACTOR SHALL COORDINATE CONSTRUCTION ACTIVITIES WITH UTILITY COMPANIES, AND CITY OF HARVARD.

THE CONTRACTOR WILL NOT BE ALLOWED TO SET UP A YARD OR FIELD OFFICE ON STATE PROPERTY WITHOUT WRITTEN PERMISSION FROM THE DEPARTMENT.

BEFORE BEGINNING ANY WORK, THE CONTRACTOR SHALL RETAIN AND RECORD FOR FUTURE REFERENCE, ALL EXISTING PAVEMENT MARKING LINES (AND RAISED REFLECTIVE PAVEMENT MARKERS) IN ORDER THAT THESE LOCATIONS CAN BE RE-ESTABLISHED FOR STRIPING. EXACT LOCATIONS OF ALL PAVEMENT MARKINGS SHALL BE AS DIRECTED BY THE ENGINEER.

BUTT JOINTS WILL BE INSTALLED AT THE ENDS OF ALL RESURFACING (WHERE RESURFACING MEETS EXISTING PAVEMENT) ACCORDING TO THE "BUTT JOINT AND HOT-MIX ASPHALT TAPER DETAILS" SHEET INCLUDED IN THE PLANS, UNLESS OTHERWISE SPECIFIED.

THE RESIDENT ENGINEER SHALL CONTACT WALTER CZARNY AREA TRAFFIC FIELD ENGINEER, AT WALTER.CZARNY@ILLINOIS.GOV, A MINIMUM OF TWO (2) WEEKS PRIOR TO THE PLACEMENT OF PERMANENT PAVEMENT MARKINGS.

ANY DAMAGE TO EXISTING PAVEMENT MARKINGS OR RAISED REFLECTIVE PAVEMENT MARKERS OUTSIDE THE REMOVAL LINE SHOWN ON THE PLANS SHALL BE REPLACED AT THE CONTRACTOR'S EXPENSE.

ALL PAVEMENT MARKINGS SHALL BE PLACED THROUGHOUT THE IMPROVEMENT ACCORDING TO DISTRICT 1 TYPICAL PAVEMENT MARKING.

FRAMES AND GRATES ADJUSTMENT OF PRIVATE UTILITIES WITHIN THE PROJECT LIMITS SHALL BE DONE BY THEIR RESPECTIVE OWNERS AND ARE NOT PART OF THIS CONTRACT.

THE CONTRACTOR SHALL CONTACT THE DISTRICT TRAFFIC CONTROL SUPERVISOR AT KALPANA.KANNAN-HOSADURGA@ILLINOIS.GOV A MINIMUM OF 72 HOURS IN ADVANCE OF BEGINNING WORK.

IT SHALL BE THE CONTRACTOR'S RESPONSIBILITY TO VERIFY ALL DIMENSIONS AND CONDITIONS EXISTING IN THE FIELD PRIOR TO ORDERING MATERIALS AND BEGINNING CONSTRUCTION.

THE CONTRACTOR SHALL BE REQUIRED TO PROVIDE ACCESS TO ABUTTING PROPERTY AT ALL TIMES DURING THE CONSTRUCTION OF THIS PROJECT.

RAISED REFLECTIVE PAVEMENT MARKERS SHALL BE PLACED THROUGHOUT THE IMPROVEMENT ACCORDING TO THE DISTRICT STANDARDS AS NOTED IN THE DETAIL.

DO NOT SCALE PLANS FOR CONSTRUCTION DIMENSIONS.

PAVEMENT MARKING TAPE, TYPE III SHALL BE USED FOR SHORT TERM PAVEMENT MARKINGS ON ALL FINAL SURFACES.

PROPOSED SIDEWALK RAMPS SHALL CONFORM TO CURRENT ADA REQUIREMENTS AND APPLICABLE STATE HIGHWAY STANDARDS OR AS DETERMINED BY THE ENGINEER.

THE CONTRACTOR SHALL MAINTAIN PEDESTRIAN ACCESS AT ALL TIMES DURING CONSTRUCTION.

ALL MILLED SURFACES SHALL BE A UNIFORM CROSS SLOPE PER LANE AND FREE OF RIDGES BETWEEN PASSES. ANY DEVIATIONS SHALL BE CORRECTED AT NO COST TO THE DEPARTMENT.

ALL PAVEMENT PATCHING, CURB AND GUTTER REMOVAL AND REPLACEMENT, SIDEWALK REMOVAL, P.C.C. SIDEWALK 5", DRAINAGE ADJUSTMENT OR RECONSTRUCTION LOCATIONS WILL BE DETERMINED IN THE FIELD BY THE ENGINEER.

TEN (10) FOOT TRANSITIONS SHALL BE USED TO MATCH PROPOSED CURB AND GUTTER AND MEDIAN ITEMS OF WORK TO EXISTING CURBS AND GUTTER AND MEDIANS IN THE FIELD, UNLESS OTHERWISE SHOWN.

THE CONTRACTOR SHALL BE REQUIRED TO KEEP A RECORD OF THE LOCATIONS OF PLATED STRUCTURES BY STATION AND OFFSET LEFT OR RIGHT OF THE CENTERLINE OF PAVEMENT.

EXISTING BROKEN FRAMES AND LIDS SHALL BE REMOVED AND DISPOSED OF BY THE CONTRACTOR AND SHALL BE REPLACED AS DIRECTED BY THE ENGINEER. REPLACEMENT FRAMES AND LIDS WILL BE PAID FOR ACCORDING TO ARTICLE 109.04 OF THE STANDARD SPECIFICATIONS UNLESS A SEPARATE PAY ITEM HAS BEEN PROVIDED.

OVERNIGHT LANE CLOSURES SHALL NOT BE ALLOWED FOR REHABILITATION PROJECTS INVOLVING DAYTIME MILLING AND RESURFACING OPERATIONS AND CLASS D PATCHING UNLESS OTHER CONDITIONS WARRANT EXTENDED LANE CLOSURES AS DETERMINED AND APPROVED IN WRITING BY THE ENGINEER OR AS PROVIDED FOR IN THE CONTRACT SPECIFICATIONS.

1	TITLE SHEET
2	INDEX OF SHEETS, STATE STANDARDS, AND GENERAL NOTES
3-4	SUMMARY OF QUANTITIES
5-6	EXISTING AND PROPOSED TYPICAL SECTIONS
7-10	ROADWAY AND PAVEMENT MARKING PLAN
11-16	CURB RAMP PLAN
17	DETAILS FOR FRAMES AND LIDS ADJUSTMENT WITH MILLING (BD-8)
18	PAVEMENT PATCHING FOR HMA SURFACED PAVEMENT (BD-22)
19	CURB OR CURB AND GUTTER REMOVAL AND REPLACEMENT (BD-24)
20	BUTT JOINT AND HMA TAPER DETAILS (BD-32)
21	ENTRANCE AND EXIT RAMP CLOSURE DETAILS (TC-08)
22	TRAFFIC CONTROL AND PROTECTION FOR SIDE ROADS, INTERSECTIONS, AND DRIVEWAYS (TC-10)
23	TYPICAL APPLICATION RAISED REFLECTIVE PAVEMENT MARKERS (SNOW-FLOW RESISTANT) (TC-11)
24	DISTRICT ONE TYPICAL PAVEMENT MARKINGS (TC-13)
25	TRAFFIC CONTROL AND PROTECTION AT TURN BAYS (TO REMAIN OPEN TO TRAFFIC) (TC-14)
26	SHORT TERM PAVEMENT MARKING LETTERS AND SYMBOLS (TC-16)
27	ARTERIAL ROAD INFORMATION SIGN (TC-22)
28-33	CURB RAMP PD DETAILS (PD-01 - PD-06)

000001-08	STANDARD SYMBOLS, ABBREVIATIONS, AND PATTERNS
424001-11	PERPENDICULAR CURB RAMPS FOR SIDEWALKS
424006-05	DIAGONAL CURB RAMPS FOR SIDEWALKS
424011-04	CORNER PARALLEL CURB RAMPS FOR SIDEWALKS
424021-06	DPRESSED CORNER FOR SIDEWALKS
442201-03	CLASS C AND D PATCHES
604001-05	FRAME AND LIDS TYPE 1
701006-05	OFF-RD OPERATIONS, 2L, 2W, 15' (4.5M) TO 24" (600MM) FROM PAVEMENT EDGE
701011-04	OFF-RD MOVING OPERATIONS, 2L, 2W, DAY ONLY
701301-04	LANE CLOSURE, 2L, 2W, SHORT TIME OPERATIONS
701306-04	LANE CLOSURE, 2L, 2W, SLOW MOVING OPERATIONS DAY ONLY, FOR SPEEDS > 45 MPH
701311-03	LANE CLOSURE, 2L, 2W, SLOW MOVING OPERATIONS DAY ONLY
701336-07	LANE CLOSURE, 2L, 2W, WORK AREAS IN SERIES, FOR SPEEDS > 45 MPH
701502-09	URBAN LANE CLOSURE, 2L, 2W, WITH BIDIRECTIONAL LEFT TURN LANE
701701-10	URBAN LANE CLOSURE, MULTILANE INTERSECTION
701901-09	TRAFFIC CONTROL DEVICES

MODEL: Gm\Notes01 [Sheet]
FILE NAME: p:\middle\pw_baniley.com\PW\DOT\Documents\DOT_Offices\District 1\ORD Projects\CD120827\CDData\CAD\Sheet\CD120827-ah-egmnote.dgn

USER NAME = Ashraf.Abidrabu	DESIGNED -	REVISED -
DRAWN -	REVISIONS -	
PLOT SCALE = 0.16666633 1/ in.	CHECKED -	REVISED -
PLOT DATE = 12/13/2023	DATE -	REVISED -

**STATE OF ILLINOIS
DEPARTMENT OF TRANSPORTATION**

**INDEX OF SHEETS, STATE STANDARDS AND GENERAL NOTES
US 14 (CROWLEY RD TO IL173/DIGGINS ST)**

SCALE: NONE SHEET 0 OF 1 SHEETS STA. TO STA.

F.A.P. RTE.	SECTI ON	COUNTY	TOTAL SHEETS	SHEET NO.
66	FAP 0066 22 R5	MCHENRY	33	2
CONTRACT NO. 62T62				
ILLINOIS FED. AID PROJECT				

SUMMARY OF QUANTITIES

CONSTRUCTION TYPE CODE

CODE NO.	ITEM	Unit	Total Quantity	80% FED 20% STATE 0005	100% STATE 0005
20200100	EARTH EXCAVATION	CU YD	36	36	
21101615	TOPSOIL FURNISH AND PLACE, 4"	SQ YD	247	247	
25200110	SODDING, SALT TOLERANT	SQ YD	247	247	
35501308	HOT-MIX ASPHALT BASE COURSE, 6"	SQ YD	14	14	
35501316	HOT-MIX ASPHALT BASE COURSE, 8"	SQ YD	5	5	
40600290	BITUMINOUS MATERIALS (TACK COAT)	POUND	17920	17920	
40600370	LONGITUDINAL JOINT SEALANT	FOOT	8169	8169	
40600400	MIXTURE FOR CRACKS, JOINTS, AND FLANGEWAYS	TON	61	61	
40600982	HOT-MIX ASPHALT SURFACE REMOVAL - BUTT JOINT	SQ YD	260	260	
40604062	HOT-MIX ASPHALT SURFACE COURSE, IL-9.5, MIX "D", N70	TON	3345	3345	
40604060	HOT-MIX ASPHALT SURFACE COURSE, IL-9.5, MIX "D", N50	TON	2	2	
42001300	PROTECTIVE COAT	SQ YD	1597	1597	
42300400	PORTLAND CEMENT CONCRETE DRIVEWAY PAVEMENT, 8 INCH	SQ YD	5	5	
42400200	PORTLAND CEMENT CONCRETE SIDEWALK 5 INCH	SQ FT	3246	3246	
42400800	DETECTABLE WARNINGS	SQ FT	516	516	
44000155	HOT-MIX ASPHALT SURFACE REMOVAL, 1 1/2"	SQ YD	39821	39821	
44000200	DRIVEWAY PAVEMENT REMOVAL	SQ YD	23	23	
44000600	SIDEWALK REMOVAL	SQ FT	2171	2171	
44201785	CLASS D PATCHES, TYPE I, 12 INCH	SQ FT	50	50	
44201789	CLASS D PATCHES, TYPE II, 12 INCH	SQ YD	380	380	
44201794	CLASS D PATCHES, TYPE III, 12 INCH	SQ YD	280	280	
44201796	CLASS D PATCHES, TYPE IV, 12 INCH	SQ YD	360	360	
44201835	CLASS D PATCHES, TYPE I, 16 INCH	SQ YD	50	50	

* SPECIALTY ITEMS

SUMMARY OF QUANTITIES

CONSTRUCTION TYPE CODE

CODE NO.	ITEM	Unit	Total Quantity	80% FED 20% STATE 0005	100% STATE 0005
44201839	CLASS D PATCHES, TYPE II, 16 INCH	SQ YD	470	470	
44201843	CLASS D PATCHES, TYPE III, 16 INCH	SQ YD	345	345	
44201845	CLASS D PATCHES, TYPE IV, 16 INCH	SQ YD	440	440	
48102100	AGGREGATE WEDGE SHOULDER, TYPE B	TON	218	218	
60252800	CATCH BASINS TO BE RECONSTRUCTED	EACH	1	1	
60257900	MANHOLES TO BE RECONSTRUCTED	EACH	1	1	
60300105	FRAMES AND GRATES TO BE ADJUSTED	EACH	40	40	
60300305	FRAMES AND LIDS TO BE ADJUSTED	EACH	1	1	
60404940	FRAMES AND GRATES, TYPE 23	EACH	10	10	
60404950	FRAMES AND GRATES, TYPE 24	EACH	30	30	
60406100	FRAMES AND LIDS, TYPE 1, CLOSED LID	EACH	5	5	
* 66900200	NON-SPECIAL WASTE DISPOSAL	CU YD	36	36	
* 66900530	SOIL DISPOSAL ANALYSIS	EACH	5	5	
* 66901001	REGULATED SUBSTANCES PRE-CONSTRUCTION PLAN	L SUM	1	1	
* 66901003	REGULATED SUBSTANCES FINAL CONSTRUCTION REPORT	L SUM	1	1	
* 66901006	REGULATED SUBSTANCES MONITORING	CAL DA	6	6	
67100100	MOBILIZATION	L SUM	1	1	
70100460	TRAFFIC CONTROL AND PROTECTION, STANDARD 701306	L SUM	1	1	
70100600	TRAFFIC CONTROL AND PROTECTION, STANDARD 701336	L SUM	1	1	
70102620	TRAFFIC CONTROL AND PROTECTION, STANDARD 701501	L SUM	1	1	
70102622	TRAFFIC CONTROL AND PROTECTION, STANDARD 701502	L SUM	1	1	

MODEL: S001 (Sheet) \\f:\abidrabu@illinois.gov\0661380\0120822-shh-S00.dgn

USER NAME: rafaAbidrabu	DESIGNED -	REVISED -
PLOT SCALE = 0.16666633' / in.	DRAWN -	REVISED -
PLOT DATE 12/13/2023	CHECKED -	REVISED -
	DATE -	REVISED -

**STATE OF ILLINOIS
DEPARTMENT OF TRANSPORTATION**

**US 14 (CROWLEY RD TO IL 173/DIGGINS ST)
SUMMARY OF QUANTITIES**

SCALE=50' SHEET OF 2 SHEETS STA. TO STA.

F.A.P. RTE.	SECTION	COUNTY	TOTAL SHEETS	SHEET NO.
66	FAP 0066 22 RS	MCHENRY	33	3
ILLINOIS FED. AID PROJECT			CONTRACT NO. 62T62	

SUMMARY OF QUANTITIES			CONSTRUCTION TYPE CODE		
CODE NO.	ITEM	Unit	Total Quantity	80% FED 20% STATE 0005	100% STATE 0005
70102635	TRAFFIC CONTROL AND PROTECTION, STANDARD 701701	L SUM	1	1	
70102640	TRAFFIC CONTROL AND PROTECTION, STANDARD 701801	L SUM	1	1	
70300100	SHORT TERM PAVEMENT MARKING	FOOT	15172	15172	
70300150	SHORT TERM PAVEMENT MARKING REMOVAL	SQ FT	7586	7586	
70300211	TEMPORARY PAVEMENT MARKING LETTERS AND SYMBOLS - PAINT	SQ FT	713	713	
70300221	TEMPORARY PAVEMENT MARKING - LINE 4"- PAINT	FOOT	37837	37837	
70300241	TEMPORARY PAVEMENT MARKING - LINE 6"- PAINT	FOOT	1379	1379	
70300251	TEMPORARY PAVEMENT MARKING - LINE 8"- PAINT	FOOT	221	221	
70300261	TEMPORARY PAVEMENT MARKING - LINE 12"- PAINT	FOOT	1329	1329	
70300281	TEMPORARY PAVEMENT MARKING - LINE 24"- PAINT	FOOT	287	287	
70307120	TEMPORARY PAVEMENT MARKING - LINE 4" - TYPE I V TAPE	FOOT	7586	7586	
* 78000100	THERMOPLASTIC PAVEMENT MARKING - LETTERS AND SYMBOLS	SQ FT	713	713	
* 78000200	THERMOPLASTIC PAVEMENT MARKING - LINE 4"	FOOT	37837	37837	
* 78000400	THERMOPLASTIC PAVEMENT MARKING - LINE 6"	FOOT	1379	1379	
* 78000500	THERMOPLASTIC PAVEMENT MARKING - LINE 8"	FOOT	221	221	
* 78000600	THERMOPLASTIC PAVEMENT MARKING - LINE 12"	FOOT	1329	1329	
* 78000650	THERMOPLASTIC PAVEMENT MARKING - LINE 24"	FOOT	287	287	
* 78100100	RAISED REFLECTIVE PAVEMENT MARKER	EACH	366	366	
78300200	RAISED REFLECTIVE PAVEMENT MARKER REMOVAL	EACH	366	366	
X0320050	CONSTRUCTION LAYOUT (SPECIAL)	L SUM	1	1	
* SPECIALTY ITEMS					

SUMMARY OF QUANTITIES			CONSTRUCTION TYPE CODE		
CODE NO.	ITEM	Unit	Total Quantity	80% FED 20% STATE 0005	100% STATE 0005
X2020110	GRADING AND SHAPING SHOULDERS	UNIT	87	87	
X4400501	COMBINATION CURB AND GUTTER REMOVAL AND REPLACEMENT LESS THAN OR EQUAL TO 10 FEET	FOOT	250	250	
X4400503	COMBINATION CURB AND GUTTER REMOVAL AND REPLACEMENT GREATER THAN 10 FEET	FOOT	1080	1080	
X5537800	STORM SEWERS TO BE CLEANED 12"	FOOT	600	0	600
X6030310	FRAMES AND LIDS TO BE ADJUSTED (SPECIAL)	EACH	25	25	
X6700407	ENGINEER'S FIELD OFFICE, TYPE A (D1)	CAL MO	12	12	
Z0018500	DRAINAGE STRUCTURES TO BE CLEANED	EACH	40		40
Z0030850	TEMPORARY INFORMATION SIGNING	SQ FT	51.4	51.4	

MODEL: S002 (Sheet)
I:\abidrabu@illinois.gov\0661380\0120822-ehh-S002.dgn

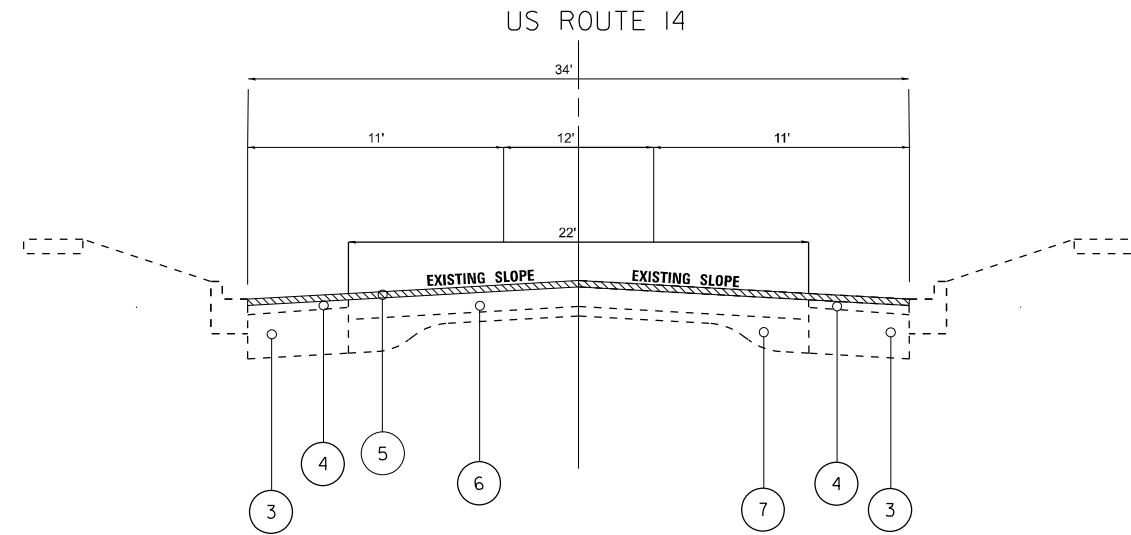
USER NAME: rafaAbidrabu	DESIGNED -	REVISED -
PLOT SCALE = 0.16666633' / in.	DRAWN -	REVISED -
PLOT DATE 12/13/2023	CHECKED -	REVISED -
	DATE -	REVISED -

**STATE OF ILLINOIS
DEPARTMENT OF TRANSPORTATION**

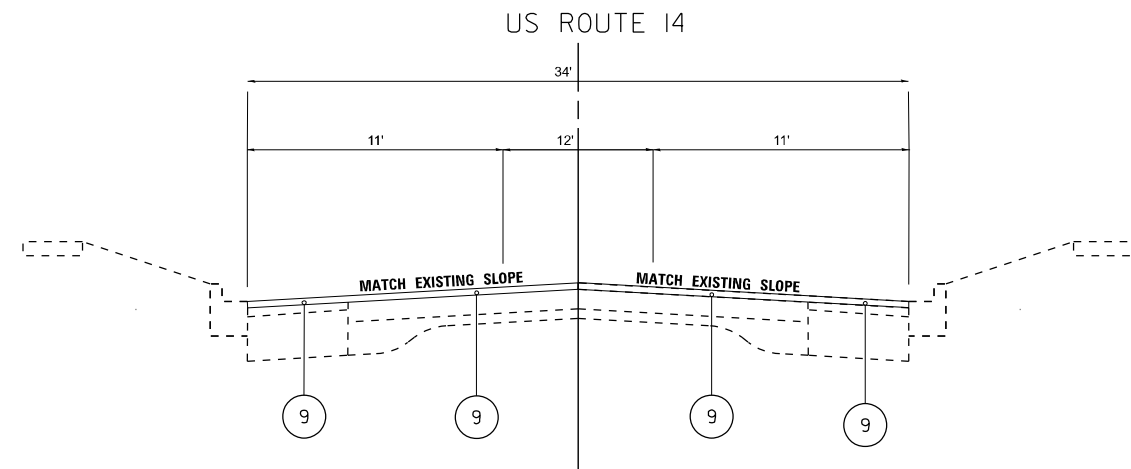
US 14 (CROWLEY RD TO IL 173/DIGGINS ST)
SUMMARY OF QUANTITIES

F.A.P. RTE.	SECTION	COUNTY	TOTAL SHEETS	SHEET NO.
66	FAP 0066 22 RS	MCHENRY	33	4
CONTRACT NO. 62T62			ILLINOIS FED. AID PROJECT	

SCALE=50' SHEET OF 2 SHEETS STA. TO STA.



EXISTING TYPICAL SECTION
STA 13+00 TO STA 39+86



PROPOSED TYPICAL SECTION
STA 13+00 TO STA 39+86

HOT-MIX ASPHALT MIXTURE REQUIREMENTS		AIR VOIDS Ndes	QUALITY MANAGEMENT PROGRAM (QMP)
MIXTURE TYPE			
SMART OVERLAY RESURFACING			
HMA SURFACE COURSE, MIX "D", IL-9.5, N70, 1.5"		4% @ 70 GYR.	QCP
PATCHING			
CLASS D PATCHES (HMA BINDER IL-19 MM)		4% @ 70 GYR.	QC / OA
DRIVEWAYS			
HMA BASE COURSE, 6" (HMA BINDER IL-19.0)		4% @ 50 GYR.	QC / OA
HMA BASE COURSE, 8" (HMA BINDER IL-19.0)		4% @ 50 GYR.	QC / OA
HMA SURFACE COURSE, MIX "D", IL-9.5, N50, 2"		4% @ 50 GYR.	QC / OA
QMP DESIGNATIONS: QUALITY CONTROL/QUALITY ASSURANCE (QC/QA); QUALITY CONTROL FOR PERFORMANCE (QCP); PAY FOR PERFORMANCE (PFP)			

NOTE:

- THE UNIT WEIGHT USED TO CALCULATE ALL HOT-MIX ASPHALT SURFACE MIXTURES IS 112 LBS/SQ.YD./IN
- THE "AC TYPE" FOR POLYMERIZED HMA MIXES SHALL BE "SBS/SBR PG 76-22" AND FOR NON-POLYMERIZED HMA THE "AC TYPE" SHALL BE PG 64-22" UNLESS MODIFIED BY RECLAIMED MATERIALS SPECIFICATIONS.

LEGEND

- 1 EXISTING AGGREGATE SHOULDER, 6"±
- 2 EXISTING PAVED SHOULDERS
- 3 EXISTING HMA BASE, 10"±
- 4 EXISTING HMA SURFACE, 3"±
- 5 HMA SURFACE REMOVAL, 1½"
- 6 EXISTING HMA SURFACE, 10½"
- 7 EXISTING PCC BASE, 9"-6"-9"
- 8 EXISTING COMBINATION CONCRETE CURB AND GUTTER
- 9 PROPOSED HMA SURFACE COURSE, MIX "D", IL-9.5, N70, 1 ½"
- 10 PROPOSED AGGREGATE WEDGE SHOULDER, TYPE B
- 11 PROPOSED GRADING AND SHAPING SHOULDERS

NOTE:

- 1. THE CONTRACTOR SHALL MILL FIRST BEFORE PATCHING.
- 2. THE LONGITUDINAL JOINT SEALANT SHALL BE PLACED OVER THE MILLED SURFACE.

MODEL: ntp FILE NAME: p:\work\illinois\benhry.com\PMIDOT\Documents\IDOT_Offices\District 1\CBD Projects\120822\CAD\Drawings\CAD\Drawings\120822-shb-typical.dgn

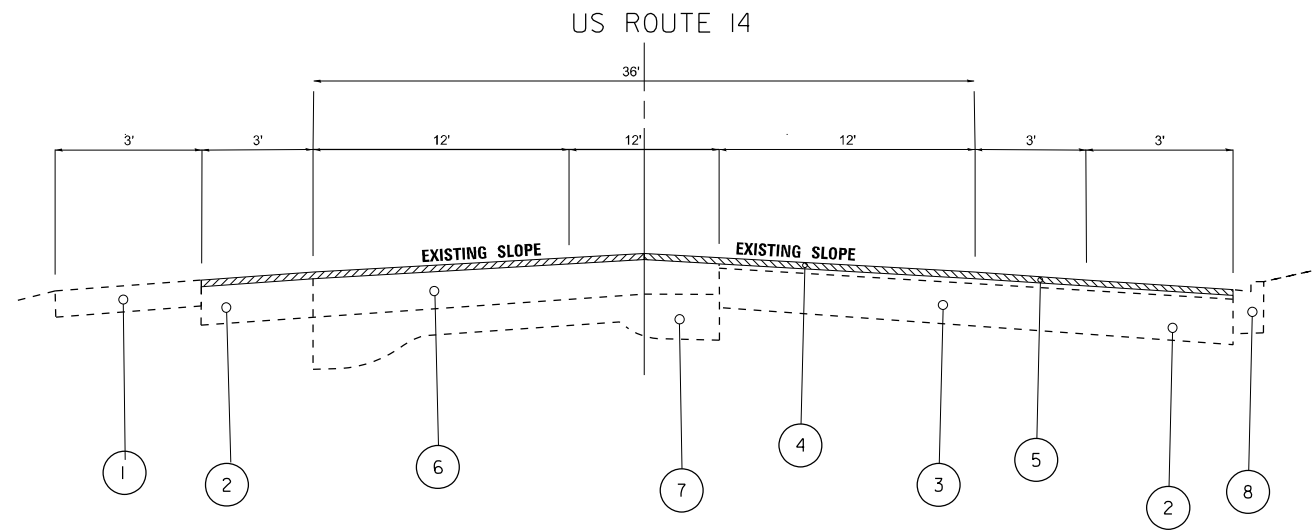
USER NAME = mohammad.hamwi	DESIGNED -	REVISED - 1/20/2024 MH
PLOT SCALE = 0.16666633 1/ in.	DRAWN -	REVISED -
PLOT DATE = 1/19/2024	CHECKED -	REVISED -
	DATE -	REVISED -

**STATE OF ILLINOIS
DEPARTMENT OF TRANSPORTATION**

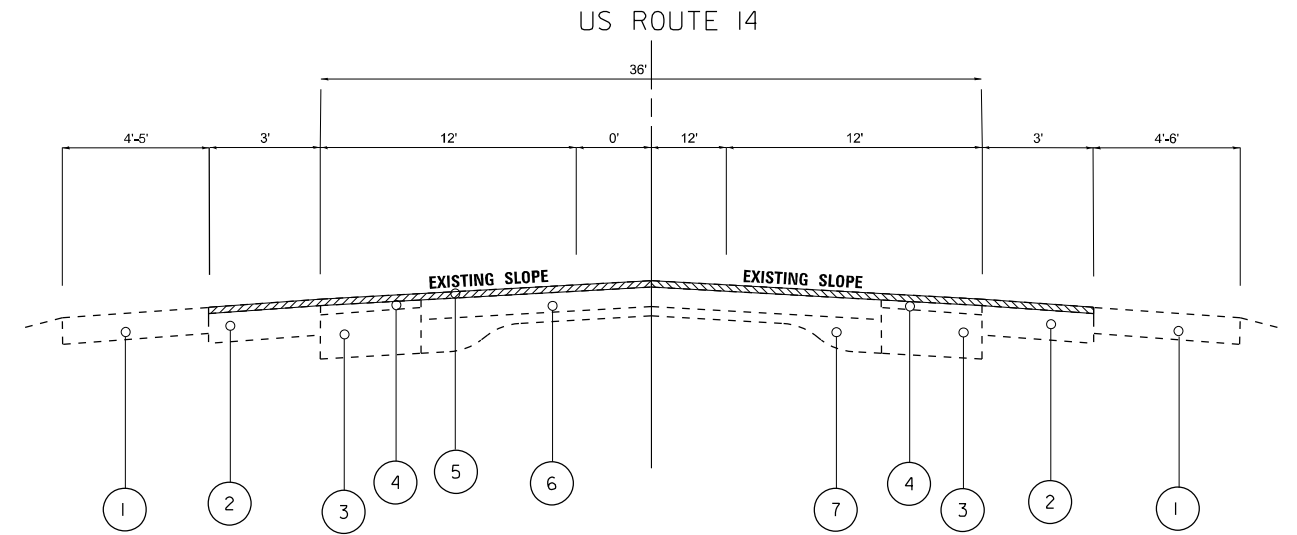
EXISTING AND PROPOSED TYPICAL SECTION
US 14 (CROWLEY RD TO IL173/DIGGINS ST)

SCALE: NONE SHEET 0 OF 1 SHEETS STA. TO STA.

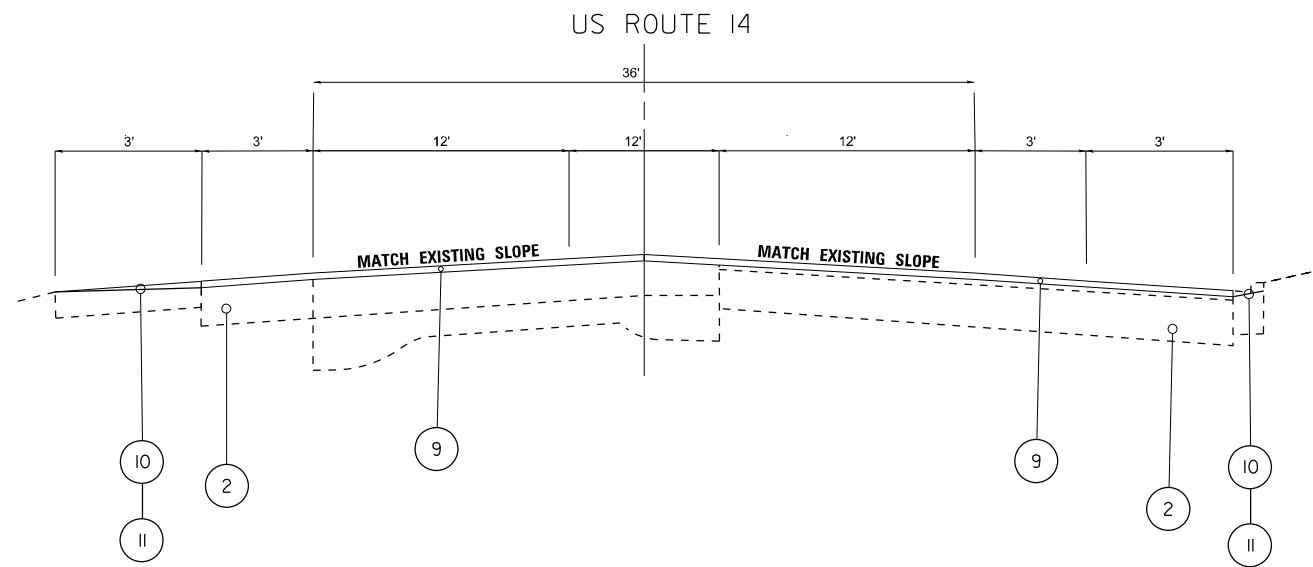
F.A.P. RTE.	SECTION	COUNTY	TOTAL SHEETS	SHEET NO.
66	FAP 0066 22 RS	MCHENRY	33	5
CONTRACT NO. 62T62			ILLINOIS FED. AID PROJECT	



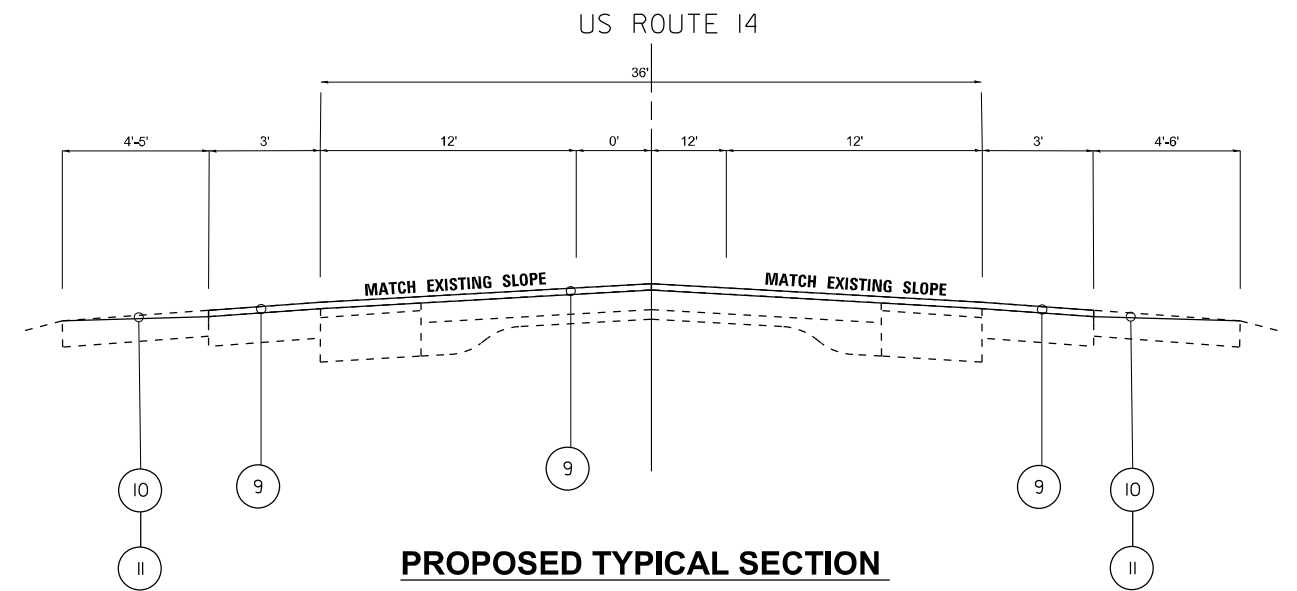
EXISTING TYPICAL SECTION
STA 74+22 TO STA 80+20



EXISTING TYPICAL SECTION
STA 39+86 TO STA 74+22
STA 80+20 TO STA 94+71



PROPOSED TYPICAL SECTION
STA 74+22 TO STA 80+20



PROPOSED TYPICAL SECTION
STA 39+86 TO STA 74+22
STA 80+20 TO STA 94+71

LEGEND

- 1 EXISTING AGGREGATE SHOULDER, 6"±
- 2 EXISTING PAVED SHOULDERS
- 3 EXISTING HMA BASE, 10"±
- 4 EXISTING HMA SURFACE, 3"±
- 5 HMA SURFACE REMOVAL, 1½"
- 6 EXISTING HMA SURFACE, 10½"
- 7 EXISTING PCC BASE, 9"-6"-9"
- 8 EXISTING COMBINATION CONCRETE CURB AND GUTTER
- 9 PROPOSED HMA SURFACE COURSE, MIX "D", IL-9.5, N70, 1 ½"
- 10 PROPOSED AGGREGATE WEDGE SHOULDER, TYPE B
- 11 PROPOSED GRADING AND SHAPING SHOULDERS

NOTES:

- 1. THE CONTRACTOR SHALL MILL FIRST BEFORE PATCHING.
- 2. THE LONGITUDINAL JOINT SEALANT SHALL BE PLACED OVER THE MILLED SURFACE.

MODEL: n:\p\... FILE NAME: ...

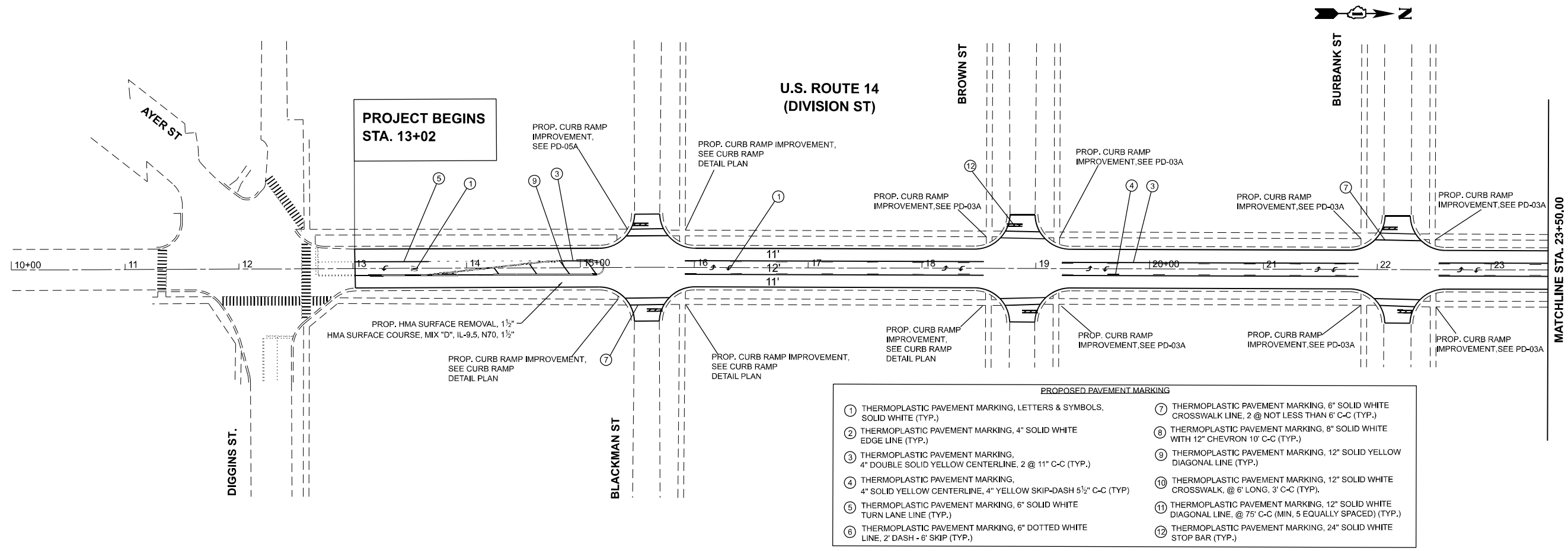
USER NAME = ashraf.abdirabbou	DESIGNED -	REVISED -
PLOT SCALE = 0.16666633 1/ in.	DRAWN -	REVISED -
PLOT DATE = 12/14/2023	CHECKED -	REVISED -
	DATE -	REVISED -

**STATE OF ILLINOIS
DEPARTMENT OF TRANSPORTATION**

EXISTING AND PROPOSED TYPICAL SECTION
US 14 (CROWLEY RD TO IL173/DIGGINS ST)

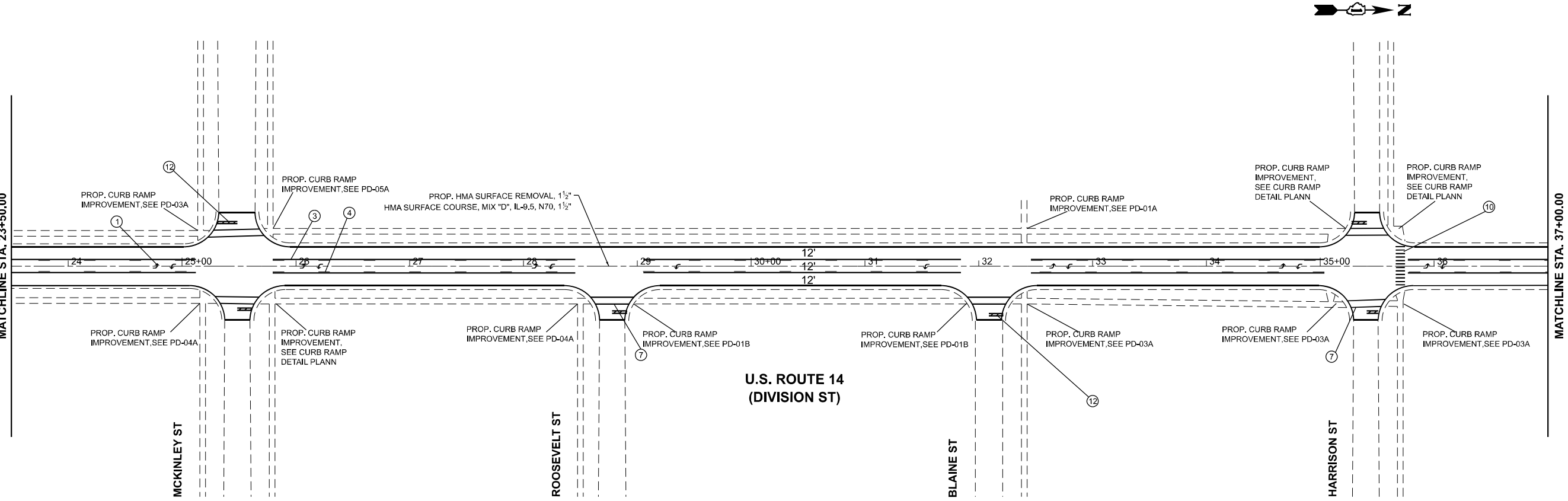
SCALE: NONE SHEET 0 OF 1 SHEETS STA. TO STA.

F.A.P. RTE.	SECTION	COUNTY	TOTAL SHEETS	SHEET NO.
66	FAP 0066 22 RS	MCHENRY	33	6
CONTRACT NO. 62T62			ILLINOIS FED. AID PROJECT	



PROPOSED PAVEMENT MARKING

<ul style="list-style-type: none"> ① THERMOPLASTIC PAVEMENT MARKING, LETTERS & SYMBOLS, SOLID WHITE (TYP.) ② THERMOPLASTIC PAVEMENT MARKING, 4" SOLID WHITE EDGE LINE (TYP.) ③ THERMOPLASTIC PAVEMENT MARKING, 4" DOUBLE SOLID YELLOW CENTERLINE, 2 @ 11" C-C (TYP.) ④ THERMOPLASTIC PAVEMENT MARKING, 4" SOLID YELLOW CENTERLINE, 4" YELLOW SKIP-DASH 5 1/2" C-C (TYP.) ⑤ THERMOPLASTIC PAVEMENT MARKING, 6" SOLID WHITE TURN LANE LINE (TYP.) ⑥ THERMOPLASTIC PAVEMENT MARKING, 6" DOTTED WHITE LINE, 2' DASH - 6' SKIP (TYP.) 	<ul style="list-style-type: none"> ⑦ THERMOPLASTIC PAVEMENT MARKING, 6" SOLID WHITE CROSSWALK LINE, 2 @ NOT LESS THAN 6' C-C (TYP.) ⑧ THERMOPLASTIC PAVEMENT MARKING, 8" SOLID WHITE WITH 12" CHEVRON 10' C-C (TYP.) ⑨ THERMOPLASTIC PAVEMENT MARKING, 12" SOLID YELLOW DIAGONAL LINE (TYP.) ⑩ THERMOPLASTIC PAVEMENT MARKING, 12" SOLID WHITE CROSSWALK, @ 6' LONG, 3' C-C (TYP.) ⑪ THERMOPLASTIC PAVEMENT MARKING, 12" SOLID WHITE DIAGONAL LINE, @ 75' C-C (MIN. 5 EQUALLY SPACED) (TYP.) ⑫ THERMOPLASTIC PAVEMENT MARKING, 24" SOLID WHITE STOP BAR (TYP.)
--	--



MODEL: US 14 - Crowley Road to IL 173 (Diggin's Street) - Plan 01
 FILE NAME: P:\Bids\2023\2023-24\11-23-23\11-23-23.dgn

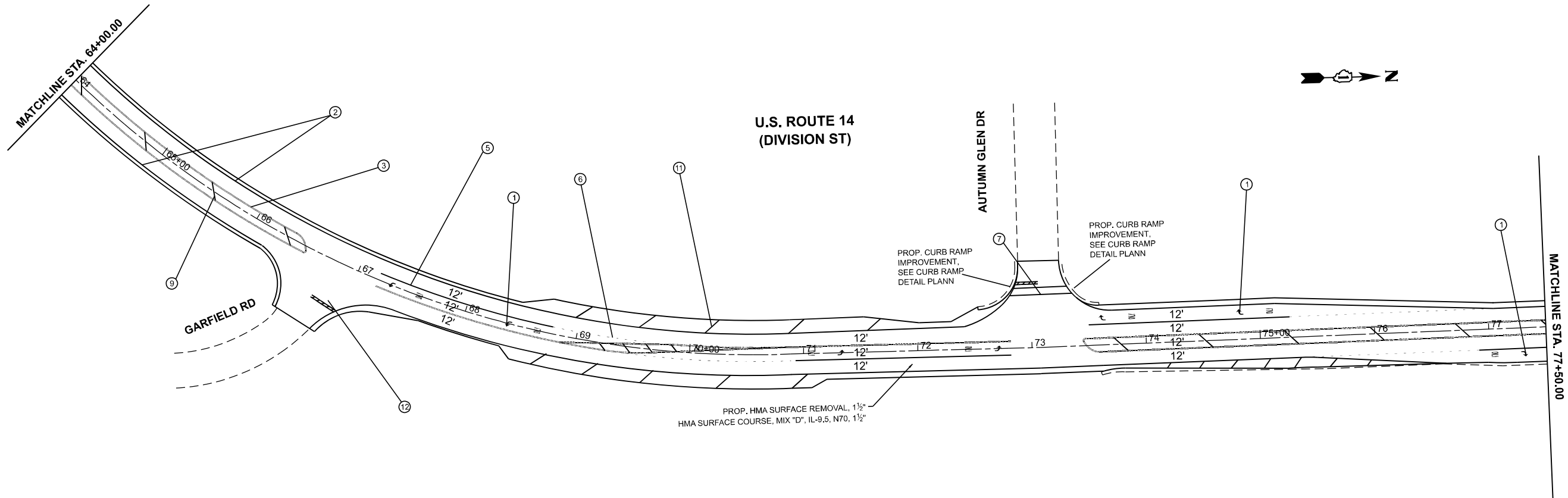
USER NAME = AshrafAbdirabbu	DESIGNED -	REVISED -
PLOT SCALE = 0.16666633' / in.	DRAWN -	REVISED -
PLOT DATE = 12/13/2023	CHECKED -	REVISED -
	DATE -	REVISED -

**STATE OF ILLINOIS
DEPARTMENT OF TRANSPORTATION**

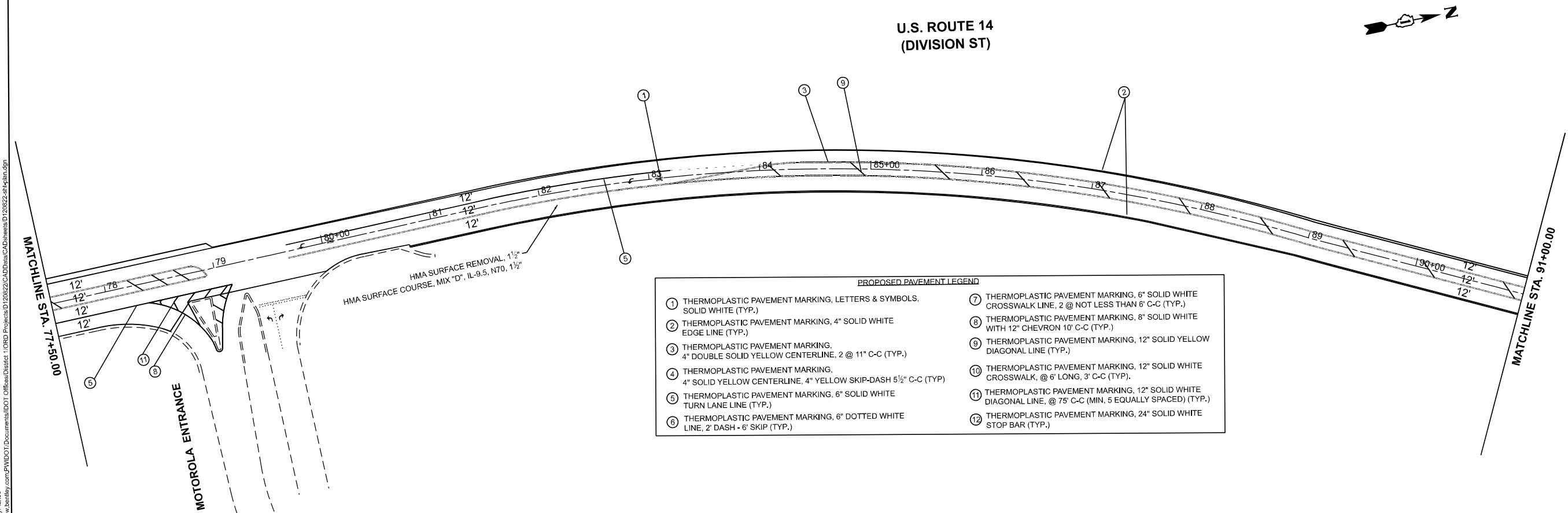
ROADWAY AND PAVEMENT MARKING PLAN
US 14 - CROWLEY ROAD TO IL 173 (DIGGINS STREET)
 SCALE: 1"=50' SHEET 1 OF 4 SHEETS STA. TO STA.

F.A.P. RTE. 66	SECTION FAP 0066 22 RS	COUNTY McHENRY	TOTAL SHEETS 33	SHEET NO. 7
CONTRACT NO. 62T62				
ILLINOIS FED. AID PROJECT				

MODEL: US14_E - RdwyPlan05
 FILE NAME: p:\w\filedpc\hennley.com\PIWDOT\Documents\DOT - OffRoad\Drawings\170RD Projects\120622\CAD\Drawings\CAD\Drawings\120622-ak141m.dgn



PROP. HMA SURFACE REMOVAL, 1 1/2"
 HMA SURFACE COURSE, MIX "D", IL-9.5, N70, 1 1/2"



HMA SURFACE REMOVAL, 1 1/2"
 HMA SURFACE COURSE, MIX "D", IL-9.5, N70, 1 1/2"

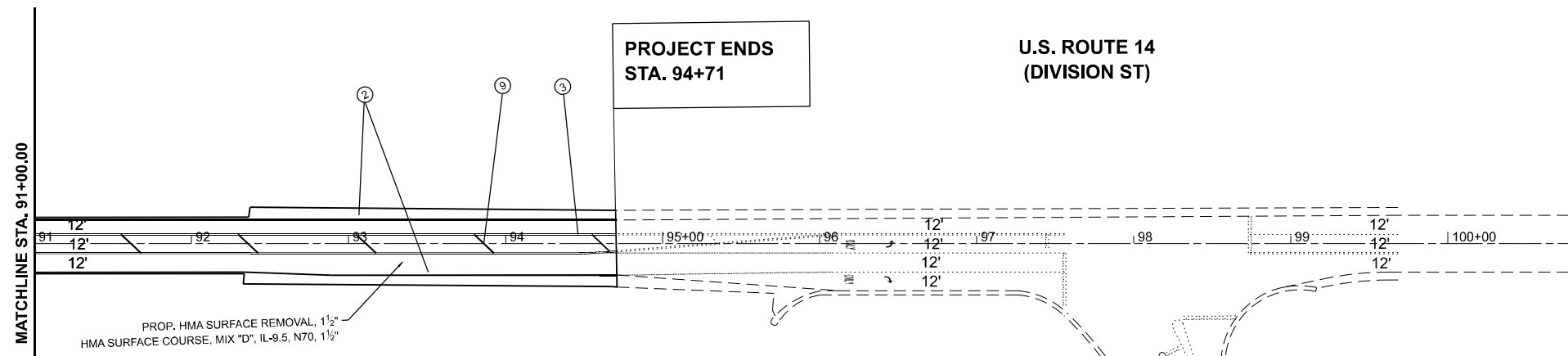
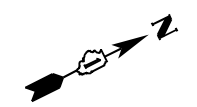
PROPOSED PAVEMENT LEGEND	
① THERMOPLASTIC PAVEMENT MARKING, LETTERS & SYMBOLS, SOLID WHITE (TYP.)	⑦ THERMOPLASTIC PAVEMENT MARKING, 6" SOLID WHITE CROSSWALK LINE, 2 @ NOT LESS THAN 6' C-C (TYP.)
② THERMOPLASTIC PAVEMENT MARKING, 4" SOLID WHITE EDGE LINE (TYP.)	⑧ THERMOPLASTIC PAVEMENT MARKING, 8" SOLID WHITE WITH 12" CHEVRON 10' C-C (TYP.)
③ THERMOPLASTIC PAVEMENT MARKING, 4" DOUBLE SOLID YELLOW CENTERLINE, 2 @ 11" C-C (TYP.)	⑨ THERMOPLASTIC PAVEMENT MARKING, 12" SOLID YELLOW DIAGONAL LINE (TYP.)
④ THERMOPLASTIC PAVEMENT MARKING, 4" SOLID YELLOW CENTERLINE, 4" YELLOW SKIP-DASH 5 1/2" C-C (TYP.)	⑩ THERMOPLASTIC PAVEMENT MARKING, 12" SOLID WHITE CROSSWALK, @ 6' LONG, 3' C-C (TYP.)
⑤ THERMOPLASTIC PAVEMENT MARKING, 6" SOLID WHITE TURN LANE LINE (TYP.)	⑪ THERMOPLASTIC PAVEMENT MARKING, 12" SOLID WHITE DIAGONAL LINE, @ 75' C-C (MIN. 5 EQUALLY SPACED) (TYP.)
⑥ THERMOPLASTIC PAVEMENT MARKING, 6" DOTTED WHITE LINE, 2 DASH - 6' SKIP (TYP.)	⑫ THERMOPLASTIC PAVEMENT MARKING, 24" SOLID WHITE STOP BAR (TYP.)

USER NAME = mohammad.hamwi	DESIGNED -	REVISED - MH 1/22/2024
PLOT SCALE = 0.16666633' / in.	DRAWN -	REVISED -
PLOT DATE = 1/22/2024	CHECKED -	REVISED -
	DATE -	REVISED -

**STATE OF ILLINOIS
 DEPARTMENT OF TRANSPORTATION**

ROADWAY AND PAVEMENT MARKING PLAN
 US 14 - CROWLEY ROAD TO IL 173 (DIGGINS STREET)
 SCALE: 1"=50' SHEET 3 OF 4 SHEETS STA. TO STA.

F.A.P. RTE. 66	SECTION FAP 0066 22 RS	COUNTY McHENRY	TOTAL SHEETS 33	SHEET NO. 9
CONTRACT NO. 62T62				
ILLINOIS FED. AID PROJECT				



PROPOSED PAVEMENT LEGEND

① THERMOPLASTIC PAVEMENT MARKING, LETTERS & SYMBOLS, SOLID WHITE (TYP.)	⑦ THERMOPLASTIC PAVEMENT MARKING, 6" SOLID WHITE CROSSWALK LINE, 2 @ NOT LESS THAN 6' C-C (TYP.)
② THERMOPLASTIC PAVEMENT MARKING, 4" SOLID WHITE EDGE LINE (TYP.)	⑧ THERMOPLASTIC PAVEMENT MARKING, 8" SOLID WHITE WITH 12" CHEVRON 10' C-C (TYP.)
③ THERMOPLASTIC PAVEMENT MARKING, 4" DOUBLE SOLID YELLOW CENTERLINE, 2 @ 11" C-C (TYP.)	⑨ THERMOPLASTIC PAVEMENT MARKING, 12" SOLID YELLOW DIAGONAL LINE (TYP.)
④ THERMOPLASTIC PAVEMENT MARKING, 4" SOLID YELLOW CENTERLINE, 4" YELLOW SKIP-DASH 5 1/2" C-C (TYP.)	⑩ THERMOPLASTIC PAVEMENT MARKING, 12" SOLID WHITE CROSSWALK, @ 6' LONG, 3' C-C (TYP.)
⑤ THERMOPLASTIC PAVEMENT MARKING, 6" SOLID WHITE TURN LANE LINE (TYP.)	⑪ THERMOPLASTIC PAVEMENT MARKING, 12" SOLID WHITE DIAGONAL LINE, @ 75' C-C (MIN, 5 EQUALLY SPACED) (TYP.)
⑥ THERMOPLASTIC PAVEMENT MARKING, 6" DOTTED WHITE LINE, 2' DASH - 6' SKIP (TYP.)	⑫ THERMOPLASTIC PAVEMENT MARKING, 24" SOLID WHITE STOP BAR (TYP.)

MODEL: US 14 - Revy.dwg
 FILE NAME: P:\Bids\pcc\mfrby.com\PIB\DOT\Documents\IBDOT\Office\Dist1\ORIG Project\12882\CADD\Bids\CAD\Sheet\12882-11-1b.dwg

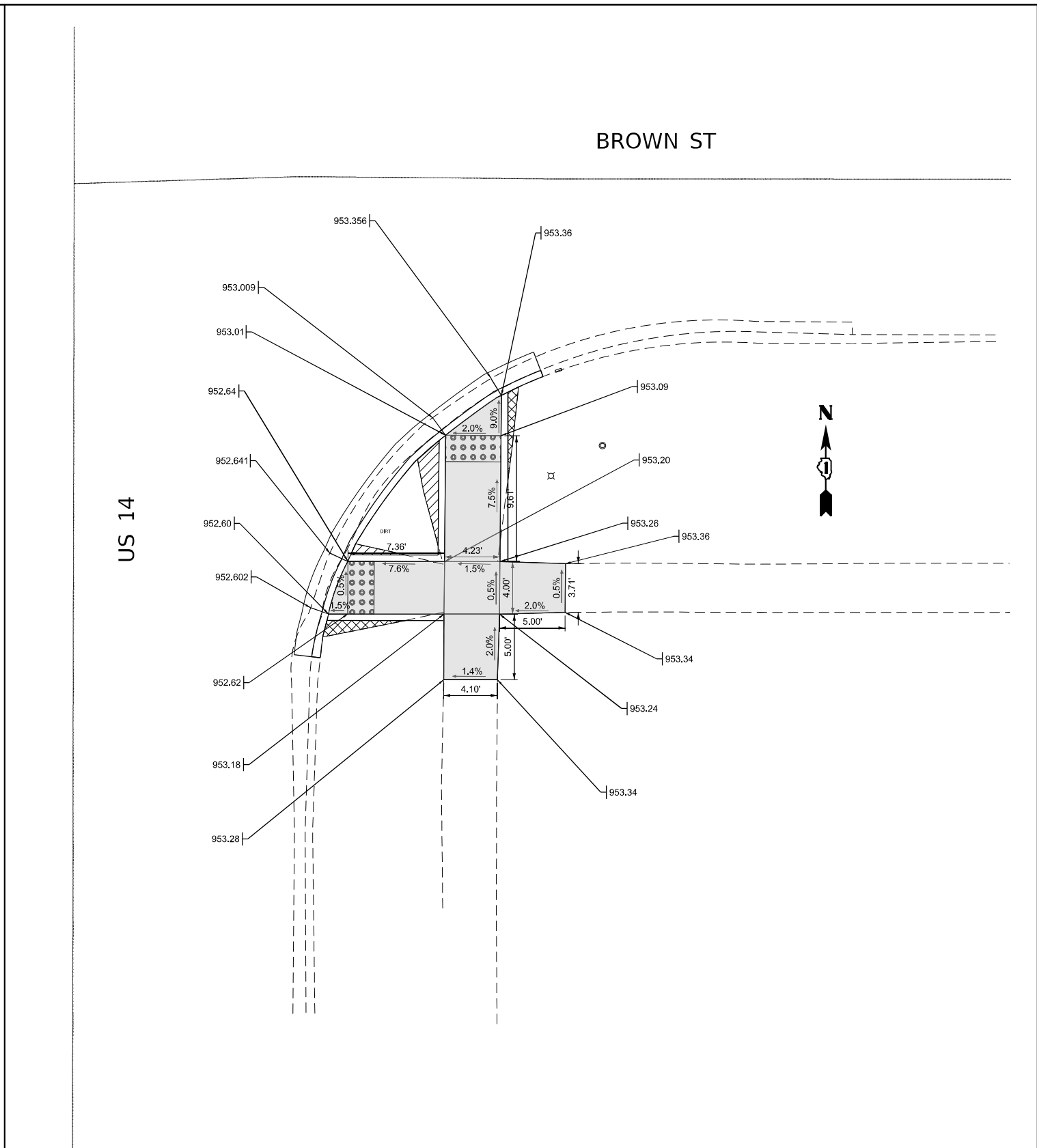
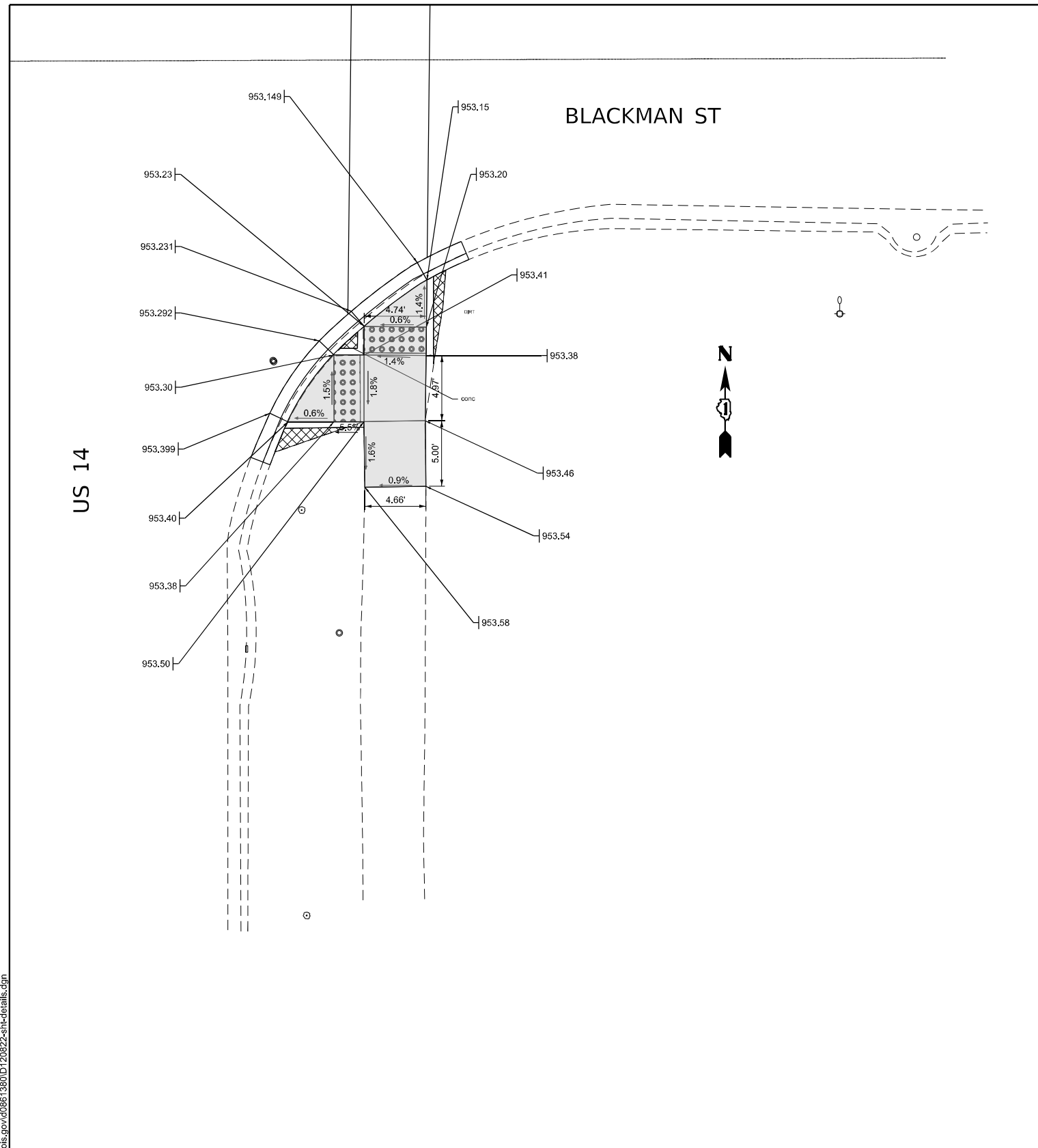
USER NAME = AshrafAbdirabbu	DESIGNED -	REVISED -
	DRAWN -	REVISED -
PLOT SCALE = 0.16666633' / in.	CHECKED -	REVISED -
PLOT DATE = 12/13/2023	DATE -	REVISED -

**STATE OF ILLINOIS
DEPARTMENT OF TRANSPORTATION**

ROADWAY AND PAVEMENT MARKING PLAN
US 14 - CROWLEY ROAD TO IL 173 (DIGGINS STREET)
 SCALE: 1"=50' SHEET 4 OF 4 SHEETS STA. TO STA.

F.A.P. RTE.	SECTION	COUNTY	TOTAL SHEETS	SHEET NO.
66	FAP 0066 22 RS	McHENRY	33	10
CONTRACT NO. 62T62				
ILLINOIS FED. AID PROJECT				

MODEL: ADA 2 (Sheet)
 FILE NAME: c:\p\work\wv\wv\ashraf.abdirabbu@illinois.gov\d0861380\120822-sht-details.dgn



BM: NEAST BOTTOM BOLT @ F.H @ BROWN ST AND US 14

LEGEND

- EXISTING LENGTH
- PROPOSED SIDE CURB
- EXISTING ELEVATION/SLOPE
- PROPOSED SIDEWALK
- DETECTABLE WARNINGS
- SIDEWALK REMOVAL REPLACE W/TOPSOIL & SOD

* ALL REPLACEMENT STRUCTURES MUST BE ADA COMPLIANT



USER NAME = Ashraf,Abdirabbu	DESIGNED -	REVISED - 1/20/2024 MH
PLOT SCALE = 0.16666833' / in.	DRAWN -	REVISED -
PLOT DATE = 12/5/2023	CHECKED -	REVISED -
	DATE -	REVISED -

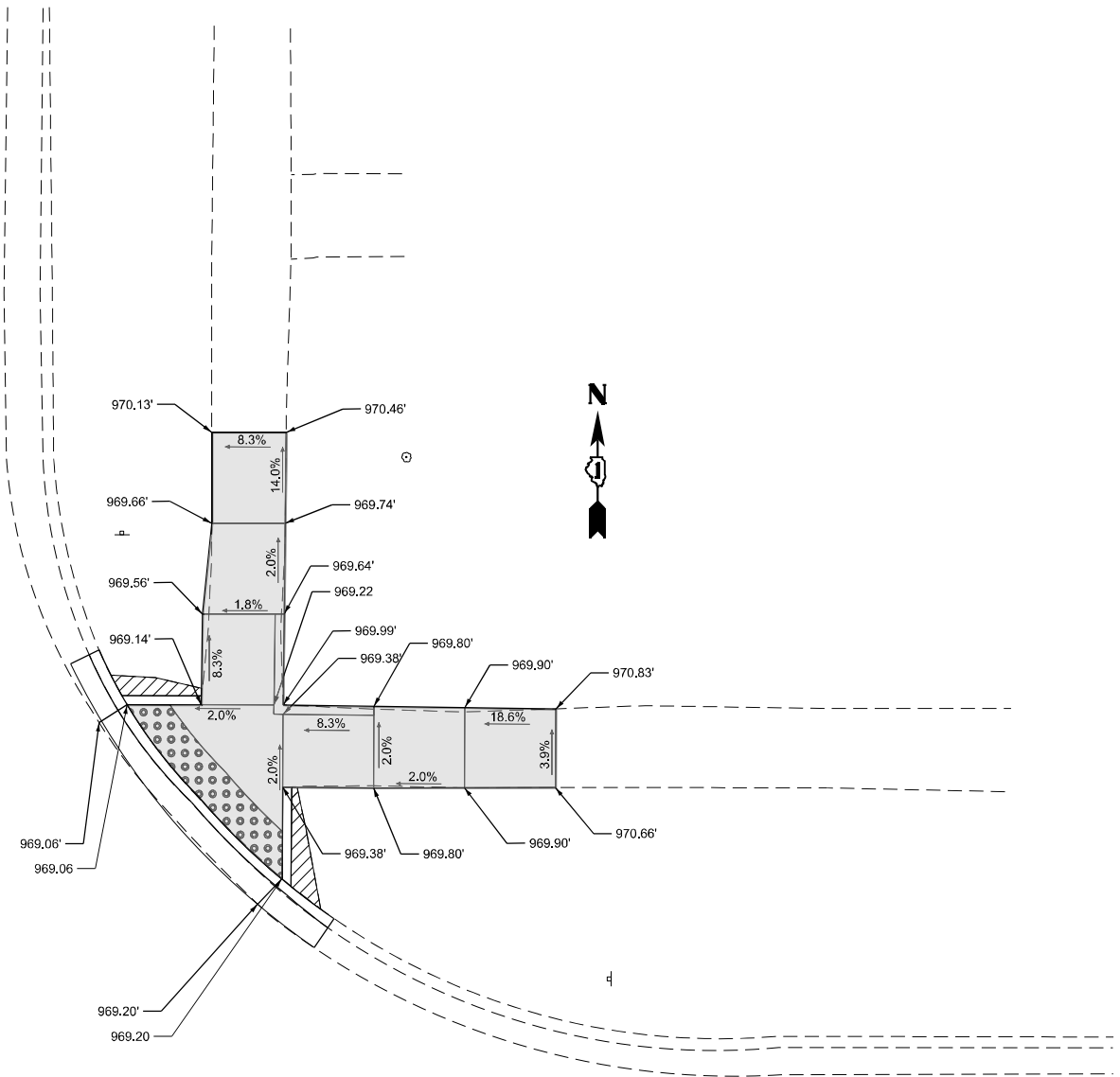
**STATE OF ILLINOIS
 DEPARTMENT OF TRANSPORTATION**

**CURB RAMP PLAN
 W BLACKMAN ST AND US 14 / E BROWN ST AND US 14**

SCALE: SHEET OF 9 SHEETS STA. 0+00.00 TO STA. 0+00.00

F.A. RTE.	SECTION	COUNTY	TOTAL SHEETS	SHEET NO.
66	FAP 0066 22 RS	MCHENRY	33	12
CONTRACT NO. 62T62				
ILLINOIS FED. AID PROJECT				

US 14



MCKINLEY ST

BM: SEAST BOLT @ F.H @ SEAST CORNER @ MCKINLEY ST AND US 14

LEGEND

EXISTING LENGTH

PROPOSED SIDE CURB

() EXISTING ELEVATION/SLOPE

PROPOSED SIDEWALK

DETECTABLE WARNINGS

SIDEWALK REMOVAL
REPLACE W/TOPSOIL & SOD

* ALL REPLACEMENT STRUCTURES MUST BE ADA COMPLIANT

MODEL: ADA 4 (Sheet)
FILE NAME: c:\p\work\wv\ashraf.abidrabu@illinois.gov\0861380\120822-sht-details.dgn

USER NAME = Ashraf,Abidrabu	DESIGNED -	REVISED - 1/20/2024 MH
	DRAWN -	REVISED -
PLOT SCALE = 0.16666833' / in.	CHECKED -	REVISED -
PLOT DATE = 11/29/2023	DATE -	REVISED -

STATE OF ILLINOIS
DEPARTMENT OF TRANSPORTATION

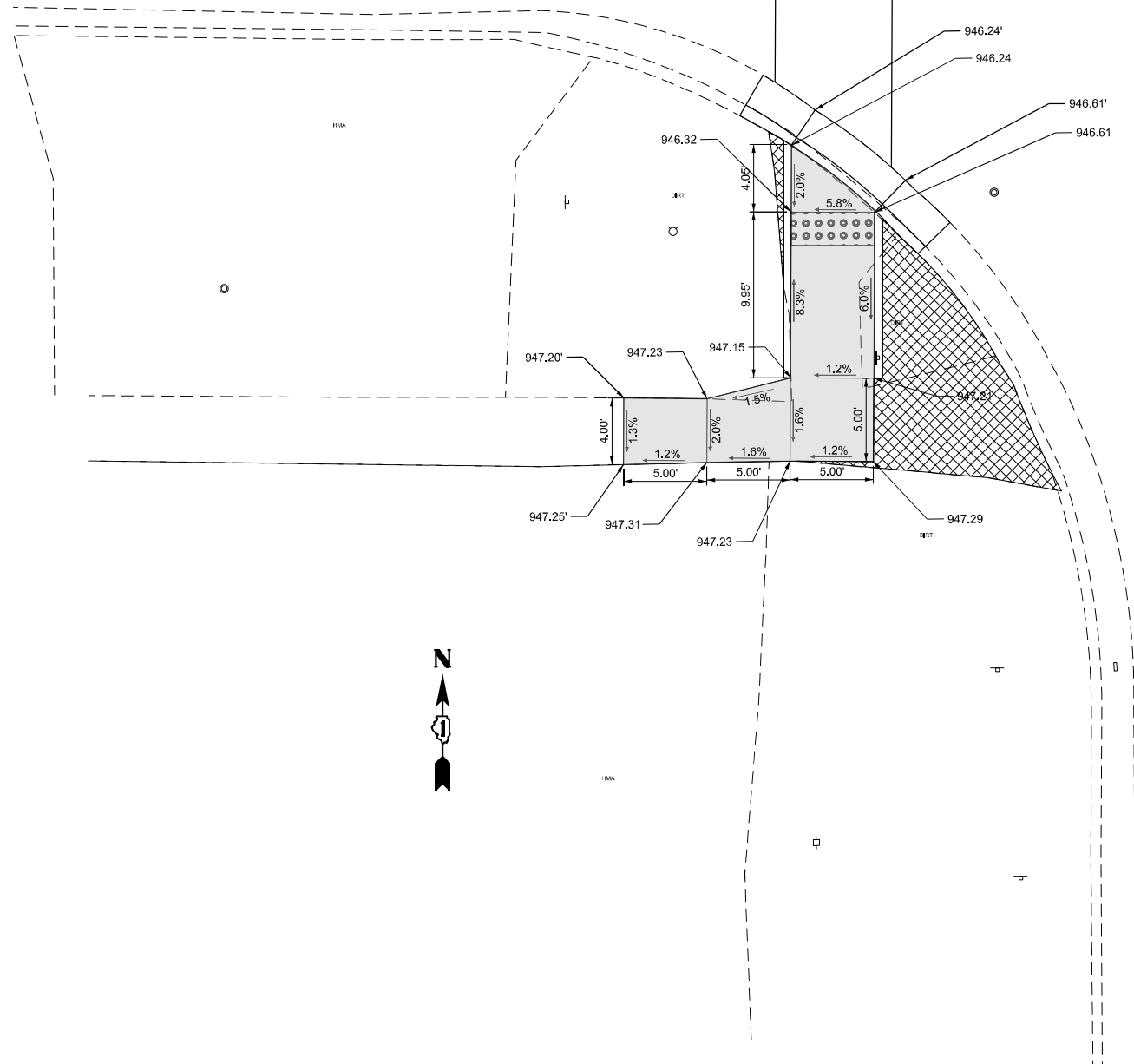
**CURB RAMP PLAN
W MCKINLEY ST AND US 14**

SCALE: SHEET OF 9 SHEETS STA. 0+00.00 TO STA. 0+00.00

F.A.P. RTE.	SECTION	COUNTY	TOTAL SHEETS	SHEET NO.
66	FAP 0066 22 RS	MCHENRY	33	13
CONTRACT NO. 62T62				
ILLINOIS FED. AID PROJECT				

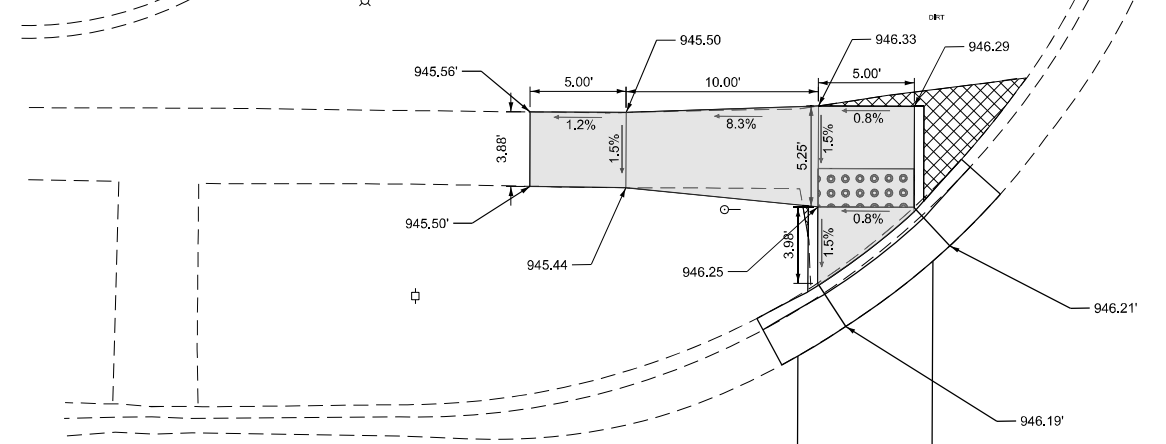
NORTHFIELD AVE

US 14



US 14


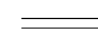

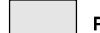
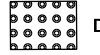

NORTHFIELD AVE



MODEL: ADA 7 (Sheet)
FILE NAME: c:\p\work\ashraf.abidrabu@illinois.gov\d0861380\120822-sht-details.dgn

BM: NEAST CORNER US 14 AND NORTHFIELD AVE

LEGEND

-  EXISTING LENGTH
-  PROPOSED SIDE CURB
-  EXISTING ELEVATION/SLOPE
-  PROPOSED SIDEWALK
-  DETECTABLE WARNINGS
-  SIDEWALK REMOVAL
REPLACE W/TOPSOIL & SOD

* ALL REPLACEMENT STRUCTURES MUST BE ADA COMPLIANT

USER NAME = Ashraf,Abidrabu	DESIGNED -	REVISED - 1/20/2024 MH
PLOT SCALE = 0.16666833' / in.	DRAWN -	REVISED -
PLOT DATE = 12/5/2023	CHECKED -	REVISED -
	DATE -	REVISED -

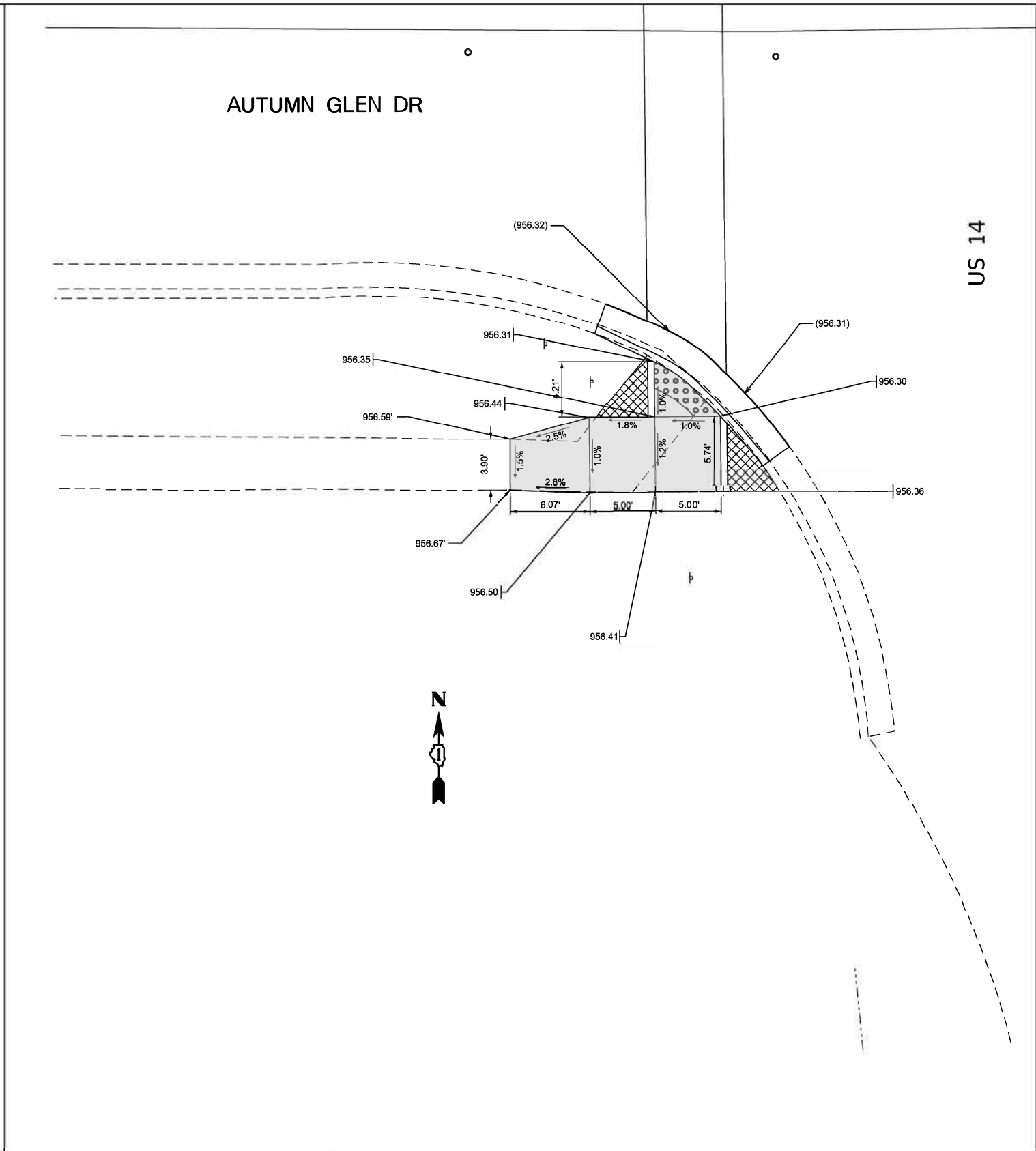
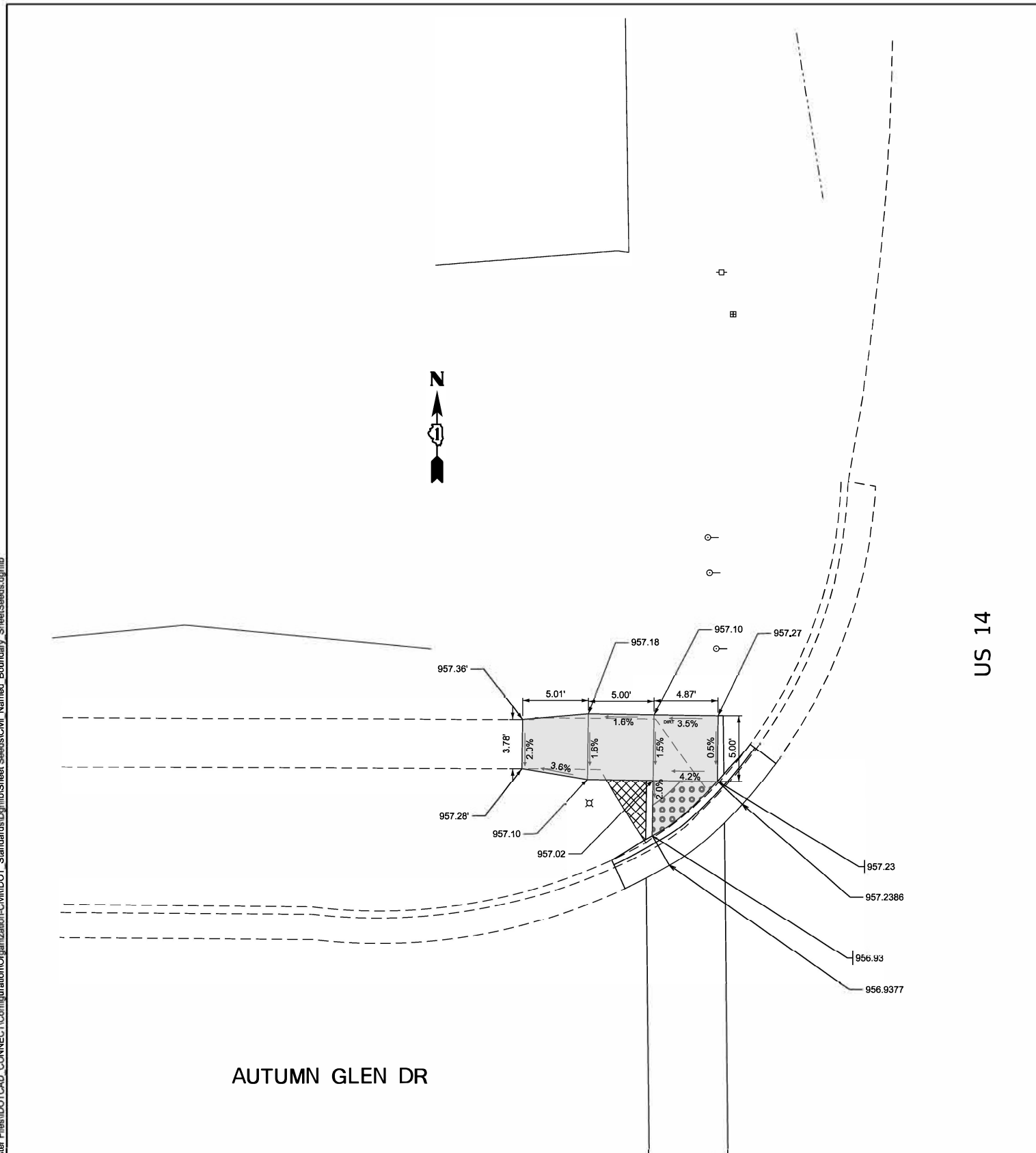
STATE OF ILLINOIS
DEPARTMENT OF TRANSPORTATION

**CURB RAMP PLAN
NORTHFIELD AVE AND US 14**

SCALE: SHEET OF 9 SHEETS STA. 0+00.00 TO STA. 0+00.00

F.A.P. RTE.	SECTION	COUNTY	TOTAL SHEETS	SHEET NO.
66	FAP 0066 22 RS	MCHENRY	33	15
CONTRACT NO. 62T62				
ILLINOIS FED. AID PROJECT				

MODEL: Plan Single (Sheet)
 FILE NAME: Z:\DOT\CAD_ORD\Folder_Master\Files\DOT\CAD_CONNECT\Configuration\Organization\Civil\DOT_Standard\Drawings\Sheet\Seeds\Civil_Named_Boundary_Sheet\Seeds.dgn

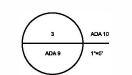


BM: NEAST BOLT @ F.H @ NEAST CORNER @ US 14 @ AUTUMN AVE

LEGEND

- PROPOSED SIDEWALK
- EXISTING LENGTH
- PROPOSED SIDE CURB
- EXISTING ELEVATION/SLOPE
- DETECTABLE WARNINGS
- SIDEWALK REMOVAL REPLACE W/TOPSOIL & SOD

* ALL REPLACEMENT STRUCTURES MUST BE ADA COMPLIANT



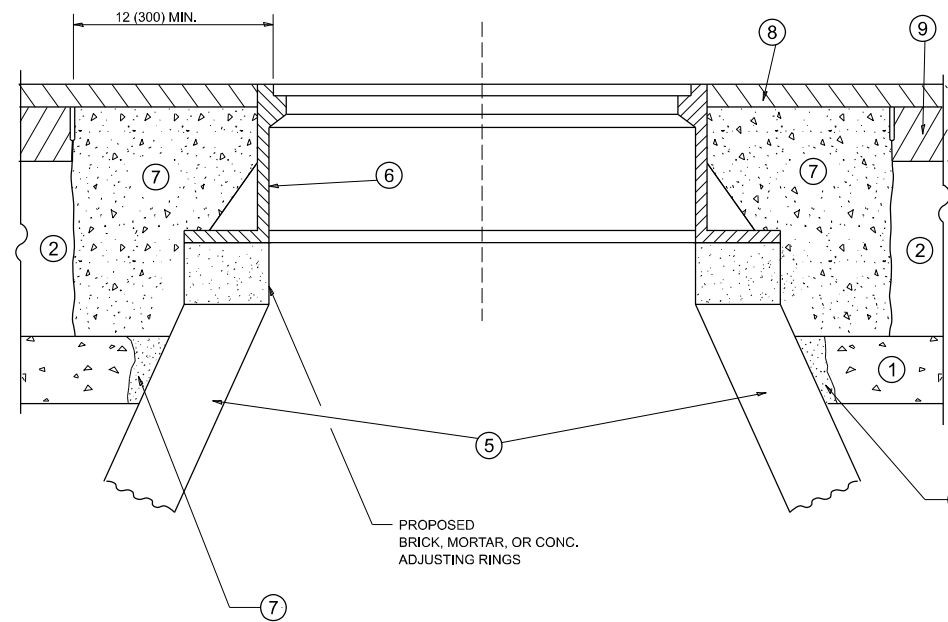
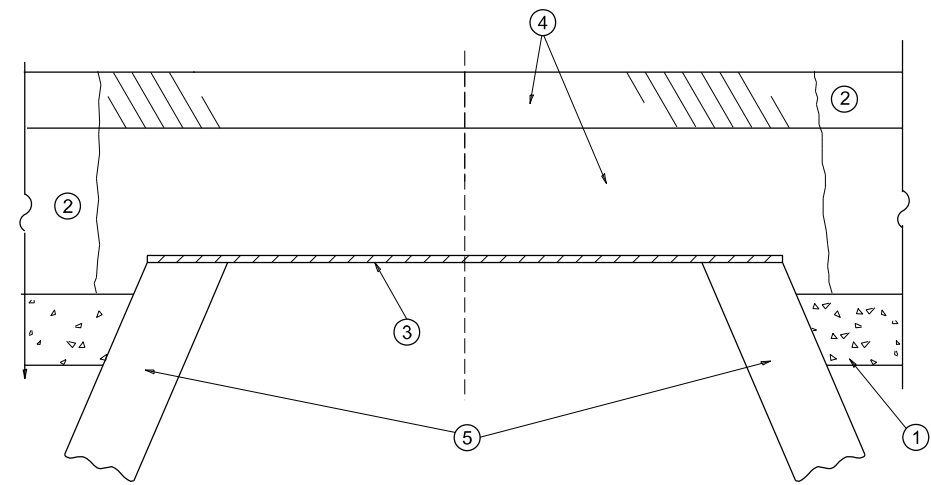
USER NAME = eric.l.thomas	DESIGNED =	REVISED = 1/20/2024 MH
PLOT SCALE = 0.16666633' / in.	DRAWN =	REVISED =
PLOT DATE = 8/30/2023	CHECKED =	REVISED =
	DATE =	REVISED =

STATE OF ILLINOIS
 DEPARTMENT OF TRANSPORTATION

CURB RAMP PLAN
AUTUMN GLEN DR AND US 14

SCALE: 1"=50' SHEET OF SHEETS STA. 0+00.00 TO STA. 0+00.00

F.A.P. RTE.	SECTION	COUNTY	TOTAL SHEETS	SHEET NO.
66	FAP 0066 22 RS	MCHENRY	33	16
ILLINOIS FED. AID PROJECT			CONTRACT NO. 62T62	



**DETAILS FOR FRAMES AND LIDS ADJUSTMENT
WITH MILLING**

CONSTRUCTION PROCEDURES

STAGE 1 (BEFORE PAVEMENT MILLING)

- A) REMOVE A MINIMUM OF 12 (300) OF THE PAVEMENT FROM AROUND THE STRUCTURE.
- B) REMOVE THE EXISTING FRAME AND LID FROM THE STRUCTURE.
- C) COVER THE STRUCTURE OPENING WITH A 36 (900) DIAMETER METAL PLATE.
- D) BACKFILL WITH CRUSHED STONE AND HMA SURFACE MIX APPROVED BY THE ENGINEER. (MIN. 3 (80) HMA TO REMAIN AFTER MILLING).

STAGE 2 (AFTER PAVEMENT MILLING)

- A) REMOVE THE HMA SURFACE MIX AND CRUSHED STONE.
- B) INSTALL THE FRAME AND LID; ADJUST THE FRAME TO ITS FINAL SURFACE ELEVATION.
- C) THE SURROUNDING SPACE SHALL BE FILLED WITH CLASS PP-2* CONCRETE TO THE ELEVATION OF THE SURFACE OF THE EXISTING BASE COURSE OR THE BINDER COURSE.

* UNLESS OTHERWISE SPECIFIED IN THE PLANS.

THE PROCEDURE EXPLAINED ABOVE SHALL CONFORM TO THE APPLICABLE PORTIONS OF SECTIONS 353, 406, 602, AND 603 OF THE STANDARD SPECIFICATIONS EXCEPT THAT "THE CONTRACTOR SHALL ADJUST THE STRUCTURES TO THE FINISHED PAVEMENT ELEVATION NO MORE THAN 5 CALENDAR DAYS PRIOR TO PLACEMENT OF THE FINAL LIFT OF SURFACE UNLESS APPROVED BY THE ENGINEER."

LEGEND

- ① SUB-BASE GRANULAR MATERIAL
- ② EXISTING PAVEMENT
- ③ 36 (900) DIAMETER METAL PLATE
- ④ PROPOSED CRUSHED STONE AND HMA SURFACE MIX
- ⑤ EXISTING STRUCTURE
- ⑥ FRAME AND LID (SEE NOTES)
- ⑦ CLASS PP-2* CONCRETE
- ⑧ PROPOSED HMA SURFACE COURSE
- ⑨ PROPOSED HMA BINDER COURSE

LOCATION OF STRUCTURES

THE CONTRACTOR WILL BE REQUIRED TO KEEP A RECORD OF THE LOCATIONS OF THE BURIED STRUCTURES ACCORDING TO THE STATION AND DISTANCE LEFT OR RIGHT OF THE CENTERLINE OF PAVEMENT. UPON COMPLETION OF THE WORK, THE CONTRACTOR WILL DELIVER THE RECORD TO THE ENGINEER.

BASIS OF PAYMENT

- 1. REMOVING FRAMES AND LIDS ON DRAINAGE AND UTILITY STRUCTURES IN THE PAVEMENT PRIOR TO MILLING, AND ADJUSTING TO FINAL GRADE PRIOR TO PLACING THE SURFACE COURSE, WILL BE PAID FOR AT THE CONTRACT UNIT PRICE EACH FOR "FRAMES AND LIDS TO BE ADJUSTED (SPECIAL)."
- 2. THIS WORK WILL NOT BE PAID FOR WHEN DRAINAGE AND UTILITY STRUCTURES ARE SPECIFIED FOR PAYMENT AS STRUCTURE RECONSTRUCTION.
- 3. NEW FRAMES AND LIDS, WHEN SPECIFIED, WILL BE PAID FOR SEPARATELY.
- 4. WHEN STRUCTURES ARE TO BE ADJUSTED OR RECONSTRUCTED, THE LOWERING AND RAISING OF THE FRAMES AND LIDS WILL NOT BE PAID FOR SEPARATELY BUT WILL BE INCLUDED IN THE COST OF THE CORRESPONDING PAY ITEM.

ALL DIMENSIONS ARE IN INCHES (MILLIMETERS) UNLESS OTHERWISE SHOWN

NOTES

- 1. EXISTING BROKEN FRAMES AND LIDS SHALL BE REMOVED AND DISPOSED OF BY THE CONTRACTOR AND SHALL BE REPLACED AS DIRECTED BY THE ENGINEER. REPLACEMENT FRAMES AND LIDS WILL BE PAID FOR IN ACCORDANCE WITH ARTICLE 109.04 OF THE STANDARD SPECIFICATIONS UNLESS A SEPARATE PAY ITEM HAS BEEN PROVIDED.
- 2. IF THE EXISTING LIDS ARE OPEN, THE FRAME WILL BE ADJUSTED TO THE ELEVATION OF THE MILLED PAVEMENT SURFACE PRIOR TO THE MILLING OPERATION. THE FRAME WILL NOT BE REMOVED AND COVERED BY THE METAL PLATE.
- 3. CITY OF CHICAGO CASTINGS ARE THE PROPERTY OF THE CITY AND THE CONTRACTOR SHALL NOTIFY THE CITY FOR REMOVAL AND DISPOSITION OF THE CASTINGS.
- 4. THE METAL PLATE USED TO COVER THE STRUCTURE SHALL REMAIN THE PROPERTY OF THE CONTRACTOR.
- 5. THE CONTRACTOR SHALL REMOVE ALL TRAFFIC CONTROL DEVICES BY THE END OF EACH WORK SHIFT.

**STATE OF ILLINOIS
DEPARTMENT OF TRANSPORTATION**

**DETAILS FOR
FRAMES AND LIDS ADJUSTMENT WITH MILLING**

SCALE: NONE SHEET 1 OF 1 SHEETS STA. TO STA.

USER NAME = mohammad.hamwi	DESIGNED - R. SHAH	REVISED - R. BORO 03-09-11
	DRAWN -	REVISED - R. BORO 12-06-11
PLOT SCALE = 0.16666633' / in.	CHECKED -	REVISED - K. SMITH 11-18-22
PLOT DATE = 1/19/2024	DATE - 10-25-94	REVISED - K. SMITH 09-15-23

F.A.P. RTE.	SECTION	COUNTY	TOTAL SHEETS	SHEET NO.
66	FAP 0066 22 RS	MCHENRY	33	17
BD600-03 (BD-08)			CONTRACT NO. 62T62	
ILLINOIS FED. AID PROJECT				

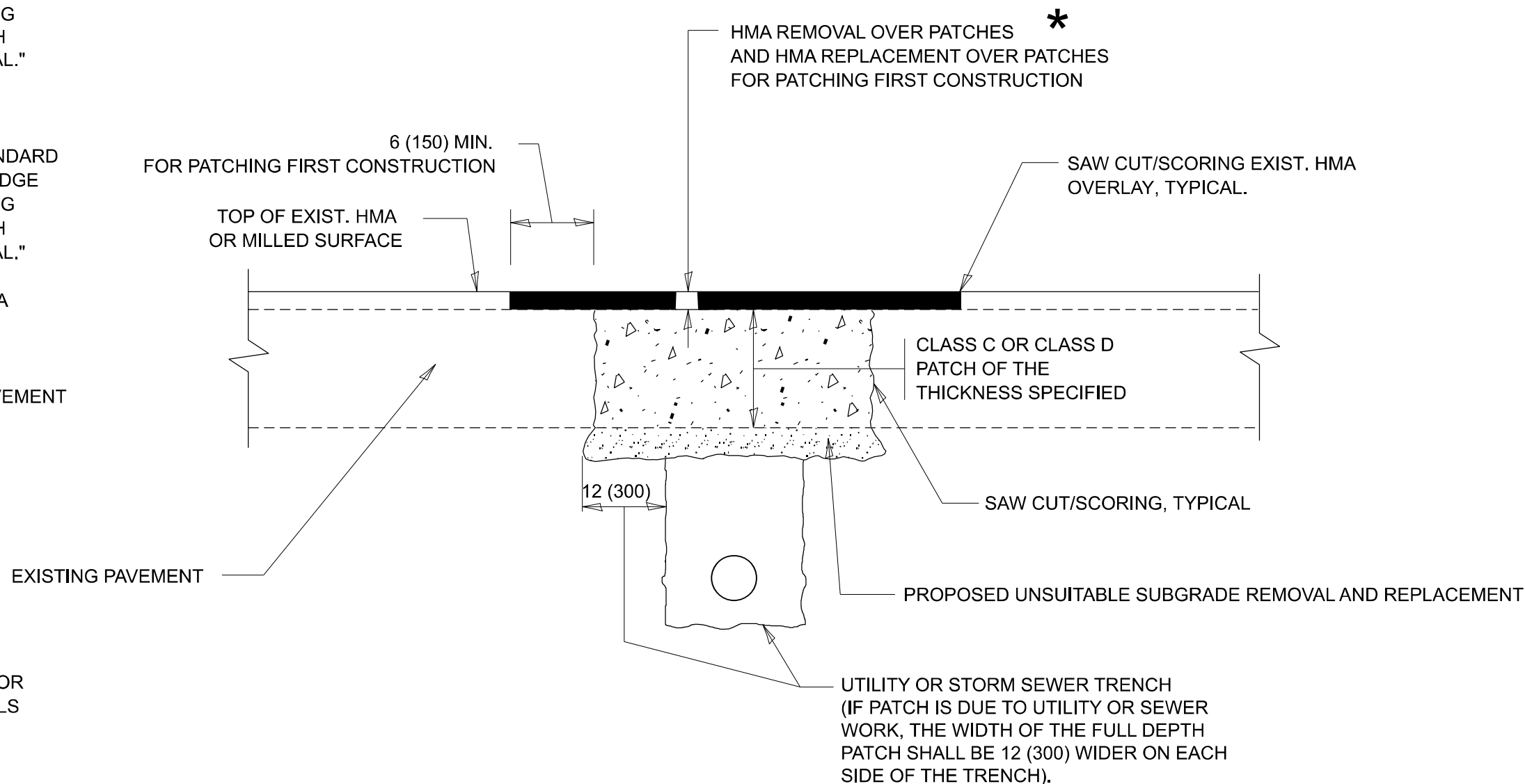
MODEL: BD-08 (Sheet)
FILE NAME: c:\p\work\wv\tohamwi\m\0861380\120822-shh-Det1Stds.dgn

METHOD OF MEASUREMENT

REFER TO SECTION 442 OF THE STANDARD SPECIFICATIONS FOR ROAD AND BRIDGE CONSTRUCTION AND THE RECURRING SPECIAL PROVISION "PATCHING WITH HOT-MIX ASPHALT OVERLAY REMOVAL."

BASIS OF PAYMENT

1. REFER TO SECTION 442 OF THE STANDARD SPECIFICATIONS FOR ROAD AND BRIDGE CONSTRUCTION AND THE RECURRING SPECIAL PROVISION "PATCHING WITH HOT-MIX ASPHALT OVERLAY REMOVAL."
2. SAW CUT/SCORING OF EXISTING HMA OVERLAY IS INCLUDED IN THE COST OF PAVEMENT PATCHING.
3. SAW CUT/SCORING OF EXISTING PAVEMENT IS INCLUDED IN THE COST OF PAVEMENT PATCHING.



SEQUENCE OF CONSTRUCTION (PATCHING FIRST)

1. REMOVE THE EXISTING HMA MATERIAL OVER THE AREA TO BE PATCHED.
2. REMOVE AND REPLACE WITH CLASS C OR D PATCH.
3. REPLACE HMA MATERIAL OVER THE AREA TO BE PATCHED.

SEQUENCE OF CONSTRUCTION (MILLING FIRST)

1. MILL HMA FIRST IF THERE IS AT LEAST 4 1/2 INCHES OR MORE OF HMA MATERIAL ON TOP OF THE EXISTING PAVEMENT OR IF THE PAVEMENT IS FULL DEPTH HMA. A MINIMUM OF 2 INCHES OF HMA MATERIAL SHALL BE IN PLACE AFTER MILLING.
2. REMOVE AND REPLACE WITH FULL DEPTH CLASS D PATCHES TO TOP OF MILLED SURFACE.

ALL DIMENSIONS ARE IN INCHES (MILLIMETERS) UNLESS OTHERWISE SHOWN.

MODEL: BD-22 (18x11) FILE NAME: P:\BID\BID Documents\DOT Office\District 1\ORIG Project\12882\CADD\Drawings\12882-24-11-18-24.dwg

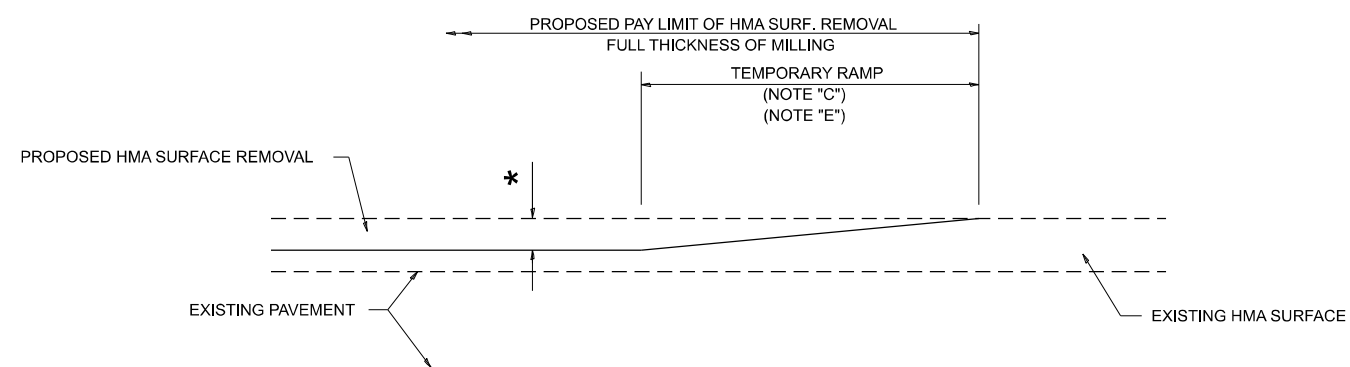
USER NAME = AshrafAbdirabbu	DESIGNED - R. SHAH	REVISED - R. BORO 01-01-07
PLOT SCALE = 0.16666633' / in.	DRAWN -	REVISED - R. BORO 09-04-07
PLOT DATE = 12/13/2023	CHECKED -	REVISED - K. ENG 10-27-08
	DATE - 10-25-94	REVISED - K. SMITH 02-01-22

**STATE OF ILLINOIS
DEPARTMENT OF TRANSPORTATION**

**PAVEMENT PATCHING FOR
HMA SURFACED PAVEMENT**

SCALE: NONE SHEET 1 OF 1 SHEETS STA. ___+___ TO STA. ___+___

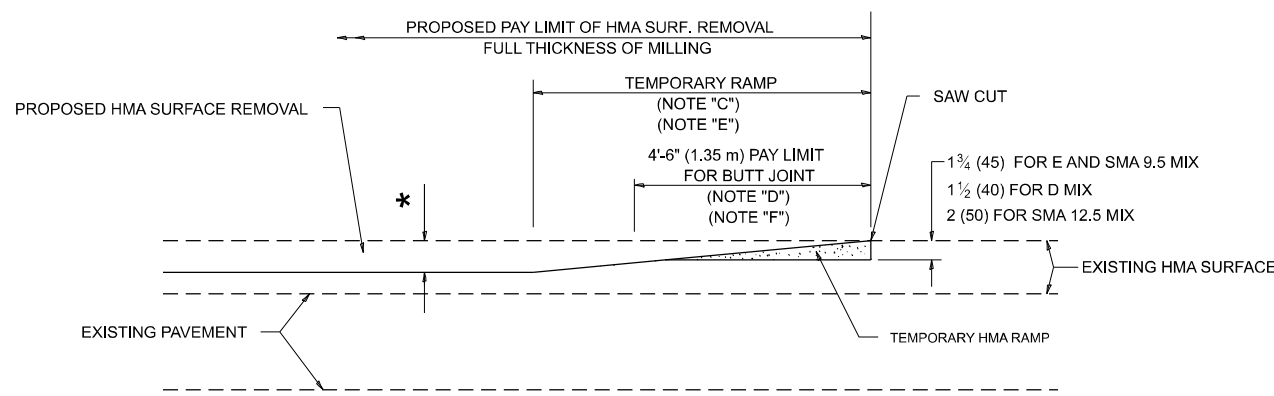
F.A.P. RTE.	SECTION	COUNTY	TOTAL SHEETS	SHEET NO.
66	FAP 0066 22 RS	MCHENRY	33	18
BD400-04 (BD-22)			CONTRACT NO. 62T62	
ILLINOIS FED. AID PROJECT				



MILLED TEMPORARY RAMP

(FOR BUTT JOINT AND HMA TAPER SEE DETAIL BELOW)

OPTION 1

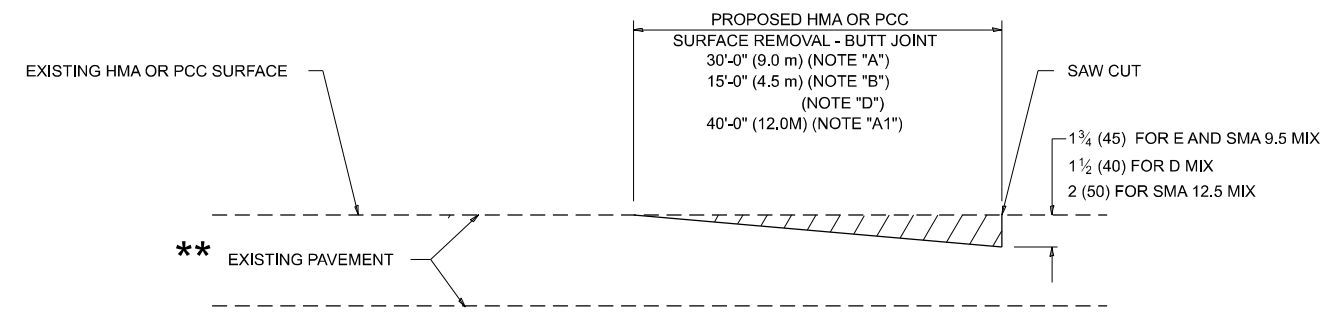


HMA CONSTRUCTED TEMPORARY RAMP

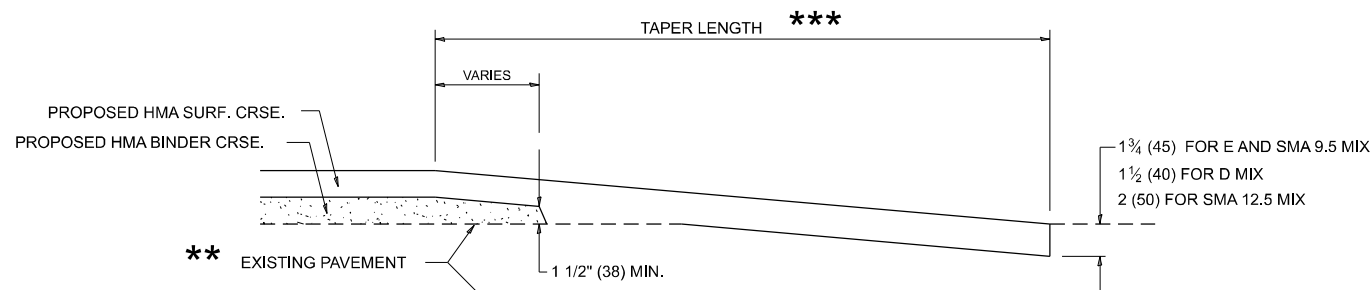
(FOR BUTT JOINT AND HMA TAPER SEE DETAIL BELOW)

OPTION 2

TYPICAL TEMPORARY RAMP



BUTT JOINT DETAIL



HMA TAPER DETAIL

TYPICAL BUTT JOINT AND HMA TAPER FOR RESURFACING ONLY

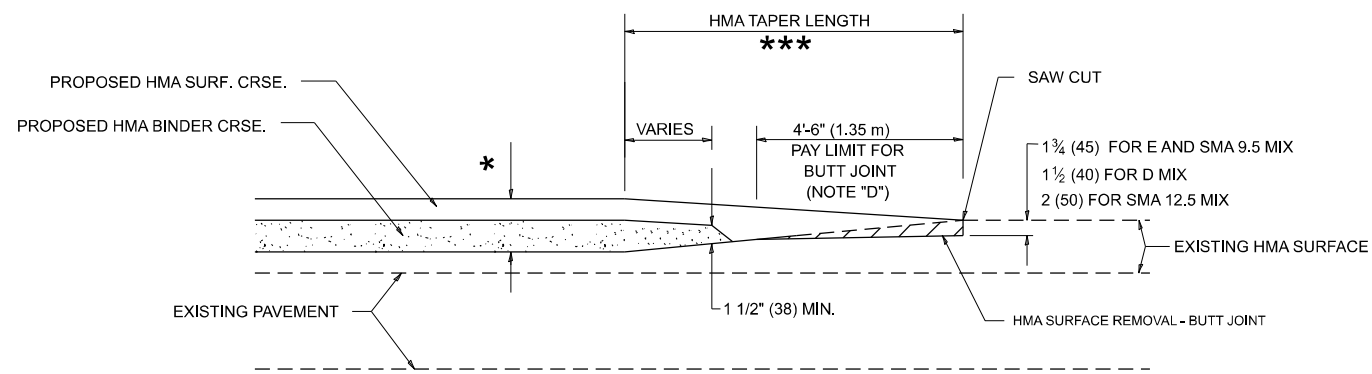
** PC CONCRETE, HMA OR HMA RESURFACED PAVEMENT.

GENERAL NOTES

- A. MAINLINE ARTERIAL ROADWAYS AND MAJOR SIDE ROADS.
- A1. INTERSTATES
- B. MINOR SIDE ROADS.
- C. THE TEMP. RAMP SHALL BE CONSTRUCTED IMMEDIATELY UPON REMOVAL OF THE EXISTING HMA SURFACE.
- D. THE BUTT JOINT SHALL BE CONSTRUCTED IMMEDIATELY PRIOR TO PLACING THE PROPOSED HMA COURSES.
- E. TAPER THE TEMP. RAMP AT A RATE OF 3' - 4" (1.02m) PER 1 INCH (25 mm) OF MILLING THICKNESS.
* SEE TYPICAL SECTIONS FOR MILLING THICKNESS.
- F. SEE ARTICLE 406.08 AND 406.14 OF THE STANDARD SPECIFICATIONS FOR "HMA AND/OR PCC SURFACE REMOVAL, BUTT JOINT".
*** 20'-0" (6.1 m) PER 1 (25) RESURFACING (NOTE "A")
10'-0" (3.0 m) PER 1 (25) RESURFACING (NOTE "B")

BASIS OF PAYMENT

- 1. THE BUTT JOINT WILL BE PAID FOR AT THE CONTRACT UNIT PRICE PER SQUARE YARD (SQUARE METER) FOR "HOT-MIX ASPHALT SURFACE REMOVAL - BUTT JOINT" OR FOR "PORTLAND CEMENT CONCRETE SURFACE REMOVAL- BUTT JOINT".
- 2. THE TEMPORARY RAMP AND SAW CUT SHALL BE INCLUDED IN THE UNIT COST FOR HMA OR PCC SURFACE REMOVAL-BUTT JOINT.



BUTT JOINT AND HMA TAPER

TYPICAL BUTT JOINT AND HMA TAPER FOR MILLING AND RESURFACING

ALL DIMENSIONS ARE IN INCHES (MILLIMETERS) UNLESS OTHERWISE SHOWN.

MODEL: BD-32 (9/14/17) FILE NAME: P:\BID\Documents\DOT Office\District 1\ORD Project\12882\CADData\CAD\Sheet\12882-41-ButtJnt.dgn

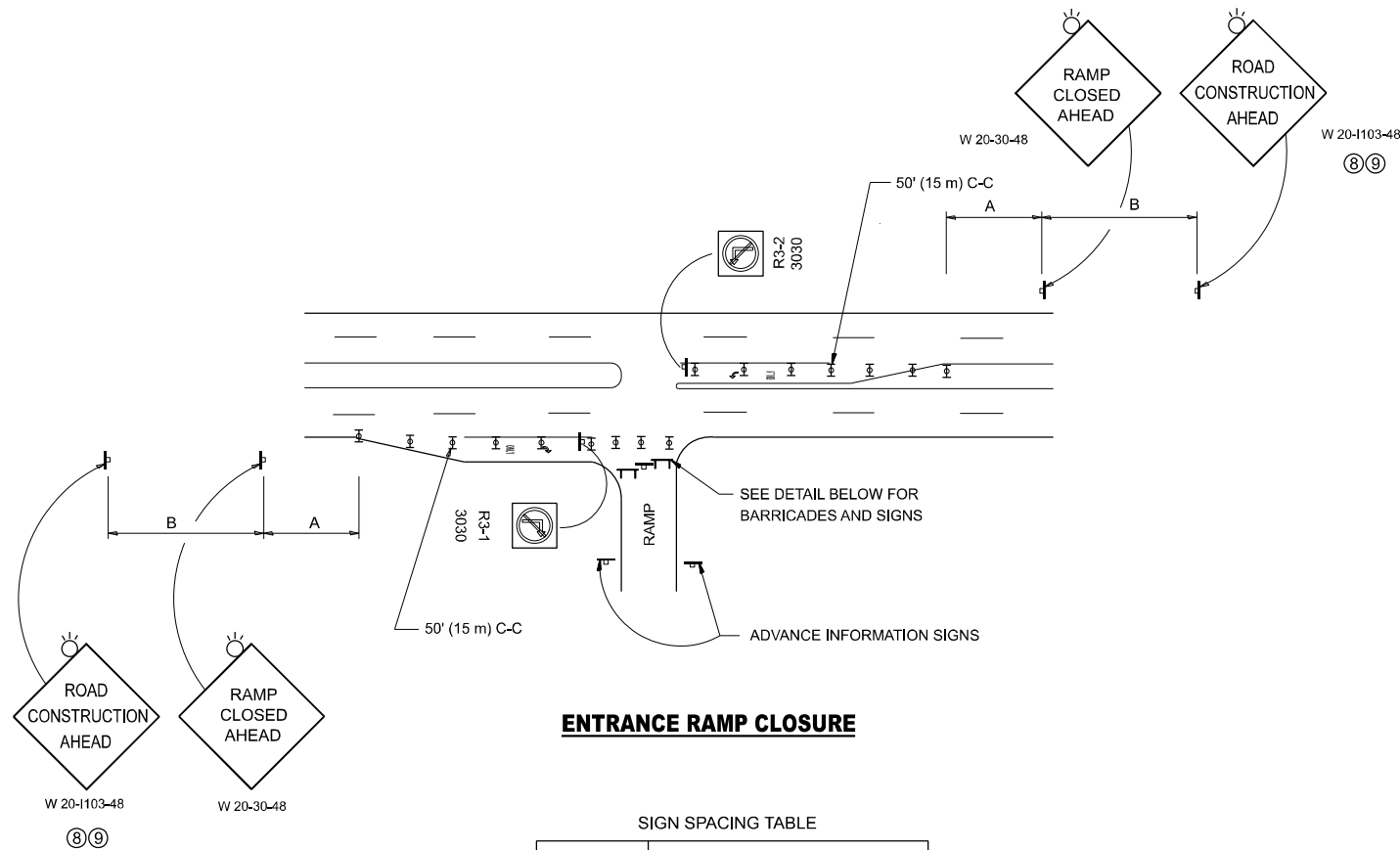
USER NAME = AshrafAbdirabbu	DESIGNED - M. DE YONG	REVISED - A. ABBAS 03-21-97
PLOT SCALE = 0.16666633' / in.	DRAWN -	REVISED - M. GOMEZ 04-06-01
PLOT DATE = 12/13/2023	CHECKED -	REVISED - R. BORO 01-01-07
	DATE - 06-13-90	REVISED - K. SMITH 02-01-22

**STATE OF ILLINOIS
DEPARTMENT OF TRANSPORTATION**

BUTT JOINT AND HMA TAPER DETAILS

SCALE: NONE SHEET 1 OF 1 SHEETS STA. ___+___ TO STA. ___+___

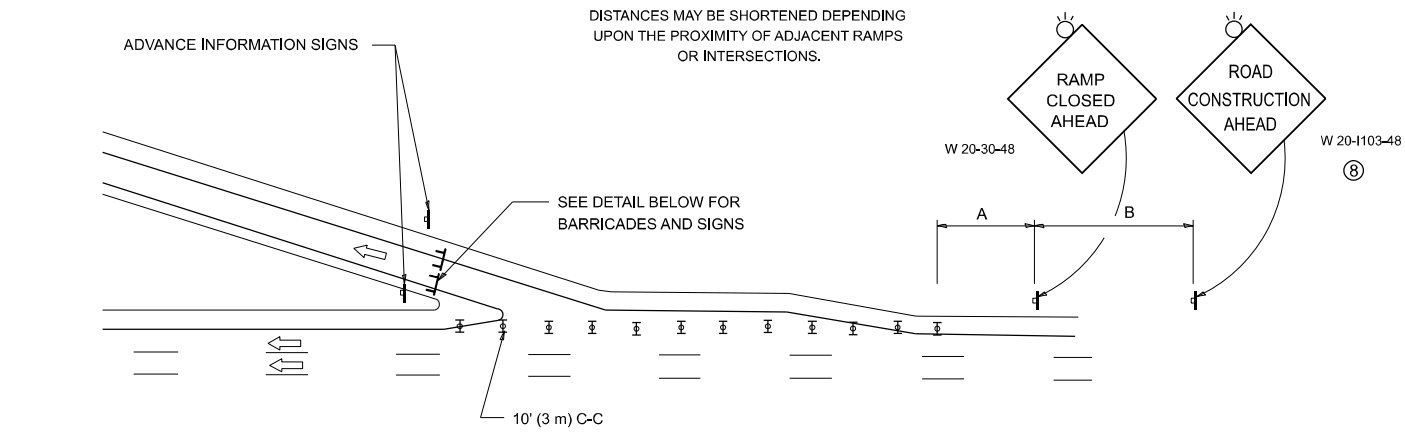
F.A.P. RTE.	SECTION	COUNTY	TOTAL SHEETS	SHEET NO.
66	FAP 0066 22 RS	MCHENRY	33	20
BD400-05 BD-32			CONTRACT NO. 62T62	
ILLINOIS FED. AID PROJECT				



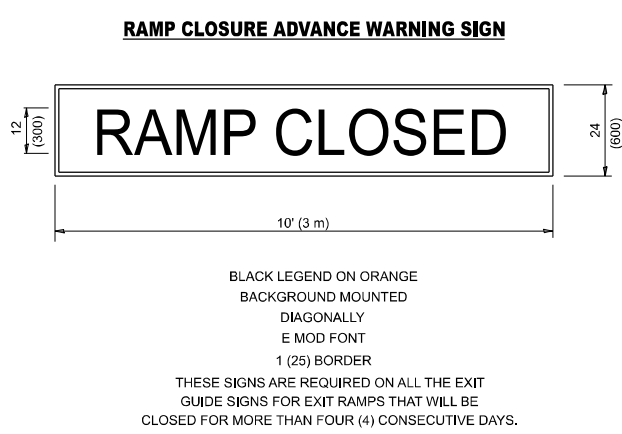
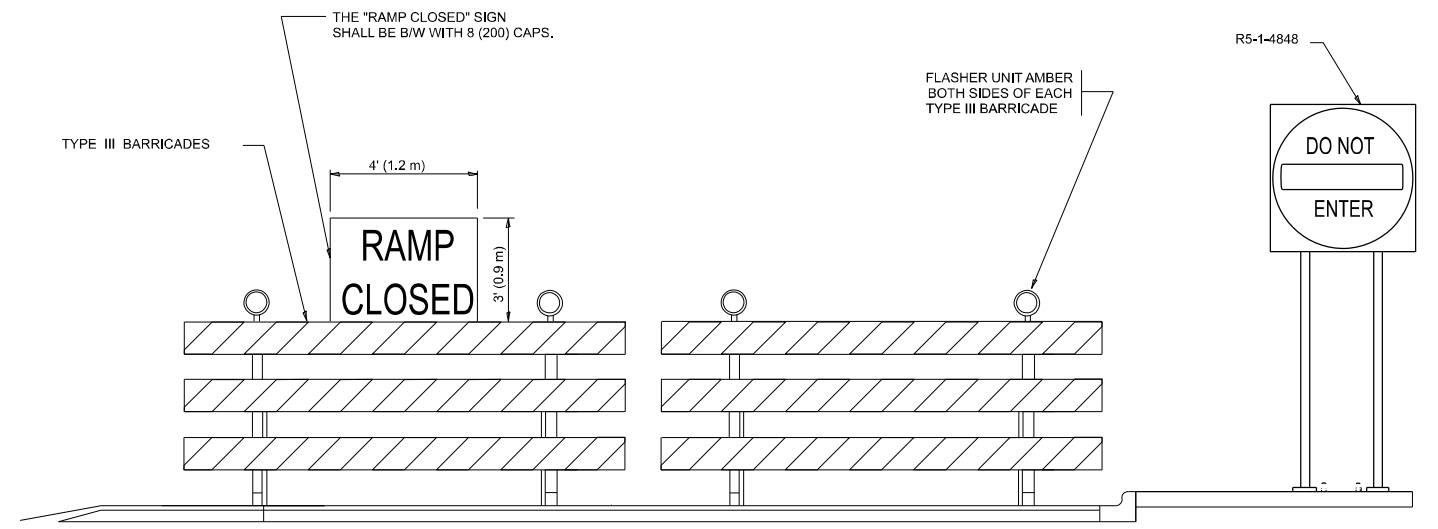
SIGN SPACING TABLE

FACILITY	DISTANCE BETWEEN SIGNS	
	A	B
EXPRESSWAY >24 HOURS	1000' (300 m)	1500' (450 m)
EXPRESSWAY ≤24 HOURS	500' (150 m)	500' (150 m)
ARTERIAL 55 MPH	500' (150 m)	500' (150 m)
ARTERIAL 50-45 MPH	350' (100 m)	350' (100 m)
ARTERIAL <45 MPH	200' (60 m)	200' (60 m)

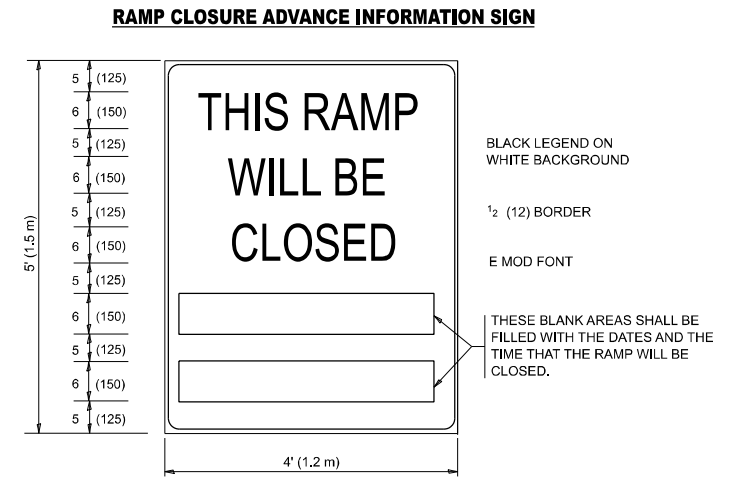
DISTANCES MAY BE SHORTENED DEPENDING UPON THE PROXIMITY OF ADJACENT RAMPS OR INTERSECTIONS.



- SYMBOLS**
- ▬ TYPE II BARRICADE OR DRUM
 - ▬ TYPE III BARRICADE WITH 2 FLASHING LIGHTS



THESE SIGNS ARE REQUIRED ON ALL THE EXIT GUIDE SIGNS FOR EXIT RAMPS THAT WILL BE CLOSED FOR MORE THAN FOUR (4) CONSECUTIVE DAYS.



THESE SIGNS ARE REQUIRED ON BOTH SIDES OF THE RAMP, MINIMUM OF 1 WEEK IN ADVANCE OF THE CLOSURE.
THESE SIGNS SHALL BE FABRICATED AND PAID FOR ACCORDING TO THE TEMPORARY INFORMATION SIGNING SPECIAL PROVISION

GENERAL NOTES:

- ① CONES MAY BE SUBSTITUTED FOR DRUMS OR TYPE II BARRICADES DURING DAY OPERATIONS. CONES SHALL BE A MINIMUM OF 28 (700) HIGH.
- ② VERTICAL BARRICADES SHALL NOT BE USED FOR RAMP CLOSURES.
- ③ A FLAGGER SHALL BE POSITIONED AT EACH CLOSED RAMP THAT IS OPEN TO CONSTRUCTION VEHICLES, PRECEDED BY A W20-7 FLAGGER WARNING SIGN.
- ④ ALL ROUTE MARKERS AND TRAILBLAZER ASSEMBLIES WHICH DIRECT MOTORISTS TO A CLOSED ENTRANCE RAMP SHALL BE COVERED WHEN THE RAMP IS CLOSED FOR MORE THAN FOUR (4) DAYS.
- ⑤ THE SIGNING AND BARRICADING WHICH IS REQUIRED BY THIS DETAIL SHALL BE INCLUDED IN THE COSTS OF TRAFFIC CONTROL AND PROTECTION (EXPRESSWAYS).
- ⑥ AUTHORIZATION FROM THE DISTRICT'S BUREAU OF TRAFFIC IS REQUIRED FOR ALL RAMP CLOSURES.
- ⑦ THE RAMP CLOSURE ADVANCE INFORMATION SIGNS SHALL BE ERECTED IF THE CLOSURE TIME EXCEEDS TWENTY-FOUR (24) HOURS. ADDITIONAL ADVANCE WARNING SIGNS ON EXIT GUIDE SIGNING WILL BE REQUIRED FOR EXIT RAMP CLOSURES THAT EXCEED FOUR (4) DAYS IN LENGTH
- ⑧ ROAD CONSTRUCTION AHEAD SIGNS MAY BE OMITTED WHEN THIS DETAIL IS USED IN CONJUNCTION WITH OTHER TRAFFIC CONTROL THAT ALREADY INCLUDES A ROAD CONSTRUCTION AHEAD SIGN.
- ⑨ ARTERIAL ROAD CONSTRUCTION AHEAD SIGNS SHALL BE INSTALLED ON THE LEFT SIDE OF TRAFFIC IF THE MEDIAN IS MORE THAN 10 FT WIDE.

ALL DIMENSIONS ARE IN INCHES (MILLIMETERS) UNLESS OTHERWISE SHOWN.

MODEL: TC-08 (Sheet) FILE NAME: P:\BIDD\Documents\DOT Office\District 1\ORIG Project\218822\CADD\Drawings\218822-11-18-2023-11-18-2023.dgn

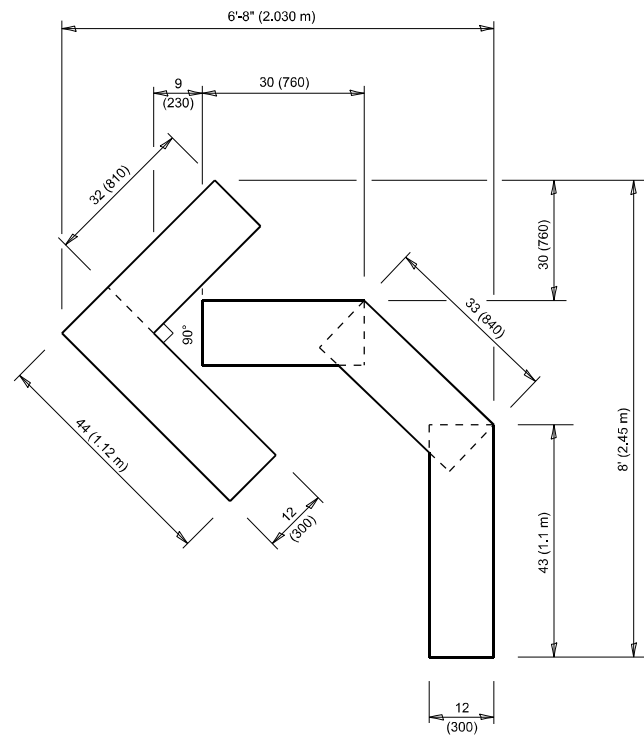
USER NAME = AshrafAbdirabbu	DESIGNED - D.W.S.	REVISED - S.P.B._01-07
PLOT SCALE = 0.16666633' / in.	DRAWN -	REVISED - S.P.B._12-09
PLOT DATE = 12/13/2023	CHECKED -	REVISED - M.D._06-13
	DATE - 02-83	REVISED - M.D._01-18

**STATE OF ILLINOIS
DEPARTMENT OF TRANSPORTATION**

**ENTRANCE AND EXIT RAMP
CLOSURE DETAILS**

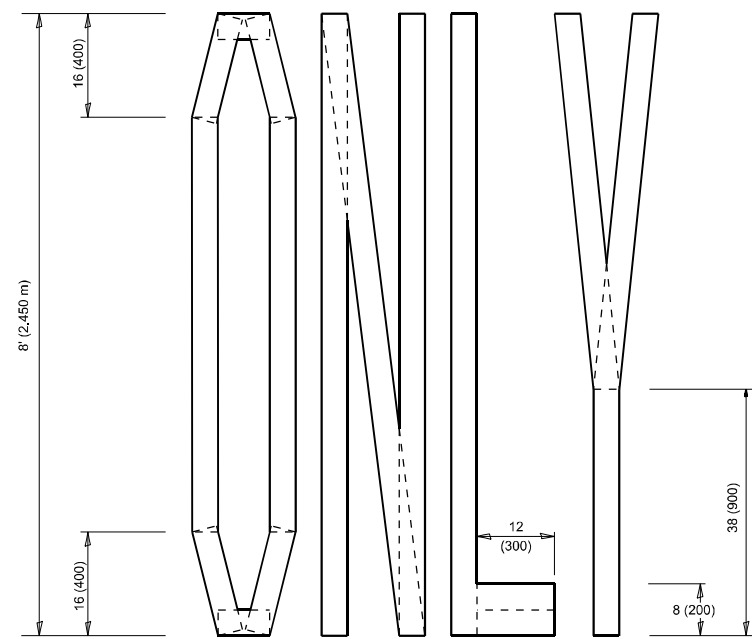
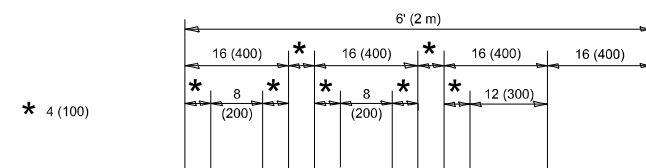
SCALE: NONE SHEET 1 OF 1 SHEETS STA. ___+___ TO STA. ___+___

F.A.P. RTE.	SECTION	COUNTY	TOTAL SHEETS	SHEET NO.
66	FAP 0066 22 RS	MCHENRY	33	21
TC-08			CONTRACT NO. 62T62	
ILLINOIS FED. AID PROJECT				



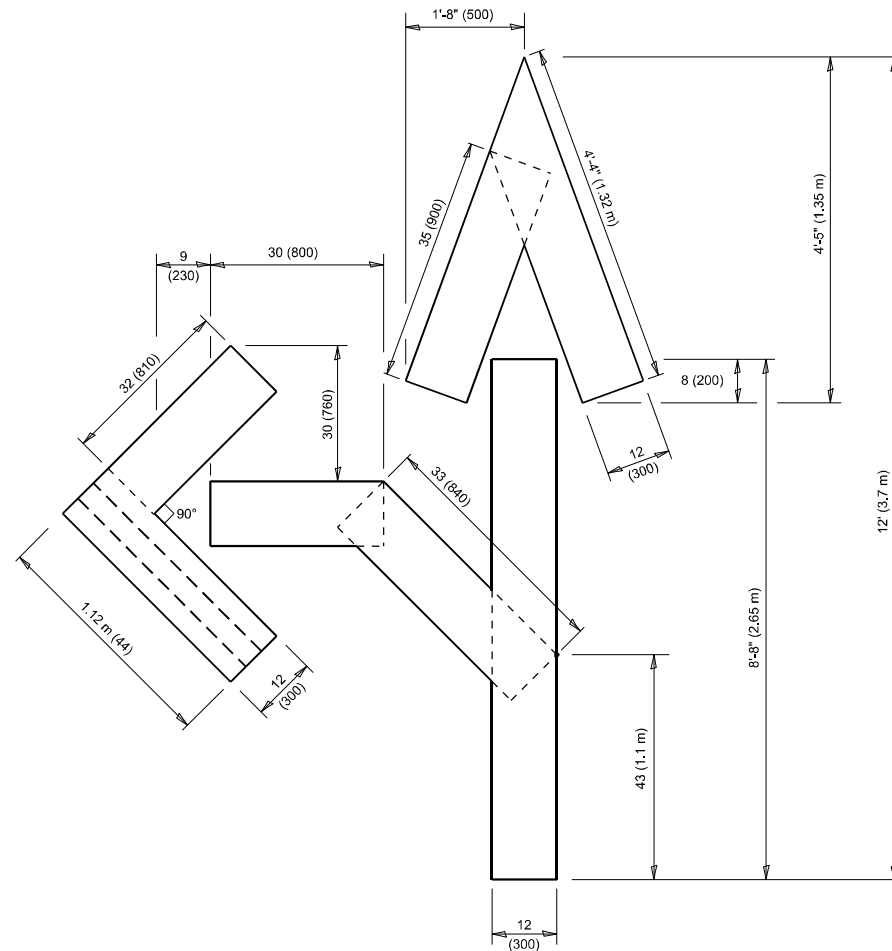
QUANTITY

4 (100) LINE = 45.5 ft. (13.9 m)
15.2 sq. ft. (1.41 sq. m)



QUANTITY

4 (100) LINE = 64.1 ft. (19.5 m)
21.4 sq. ft. (1.99 sq. m)

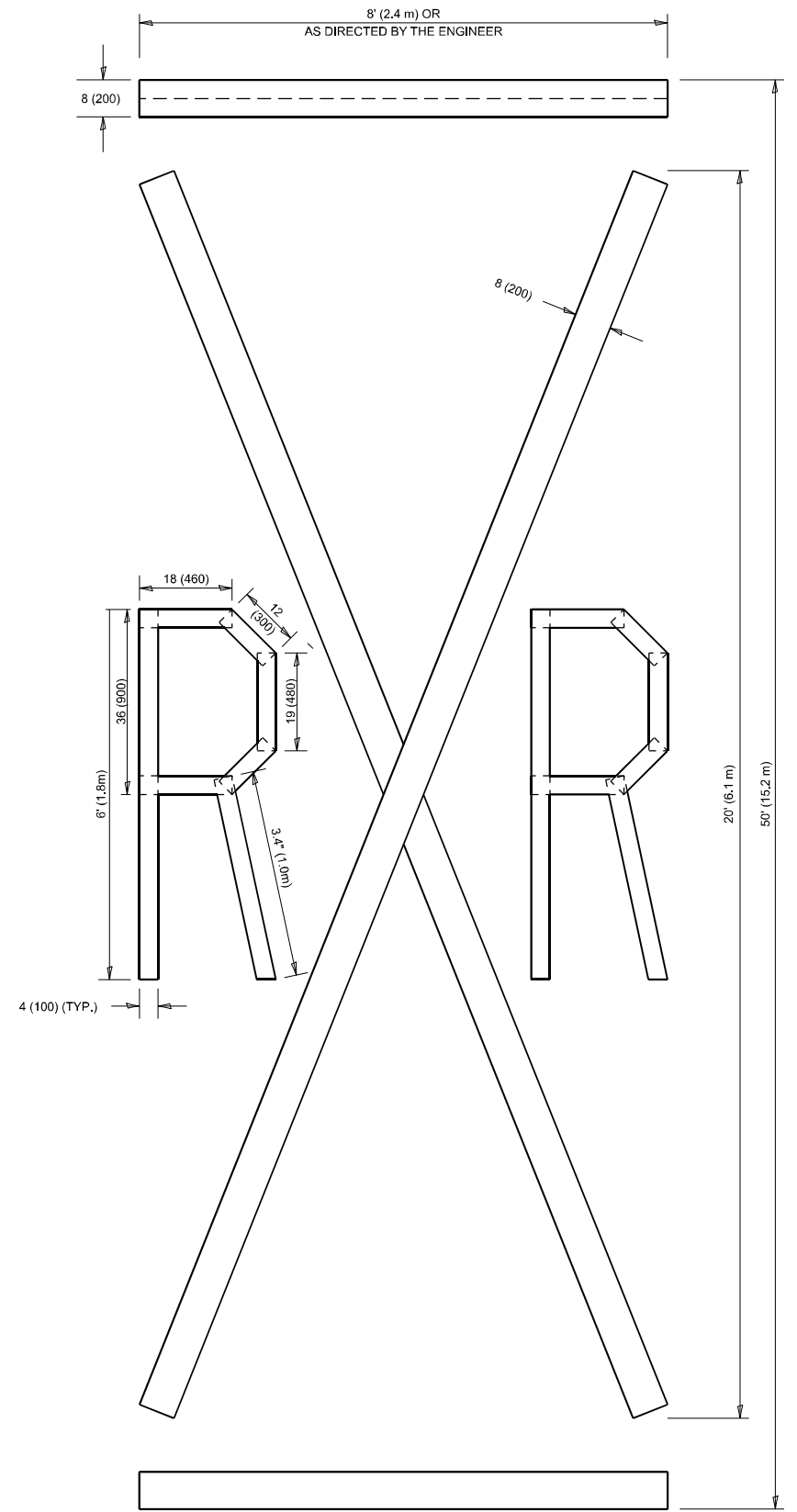


QUANTITY

4 (100) LINE = 82.5 ft. (25.1 m)
27.5 sq. ft. (2.53 sq. m)

NOTE:

ALL QUANTITIES OF PLACEMENT ARE REPRESENTED IN LINEAR FEET OF 4" LINES TO MATCH THE 4" TEMPORARY TAPE PAY ITEM AND REPRESENTS THE TOTAL QUANTITY OF 4" TAPE REQUIRED.



QUANTITY

4 (100) LINE = 225.9 ft. (68.9 m)
75.3 sq. ft. (6.99 sq. m)

All dimensions are in inches (millimeters) unless otherwise shown.

MODEL: TC-16 (Sheet)
FILE NAME: P:\Bids\pavement\TC16\DOT\Documents\DOT Office\District 1\ORD Project\12882\CADD\Drawings\12882-16-SubStds.dgn

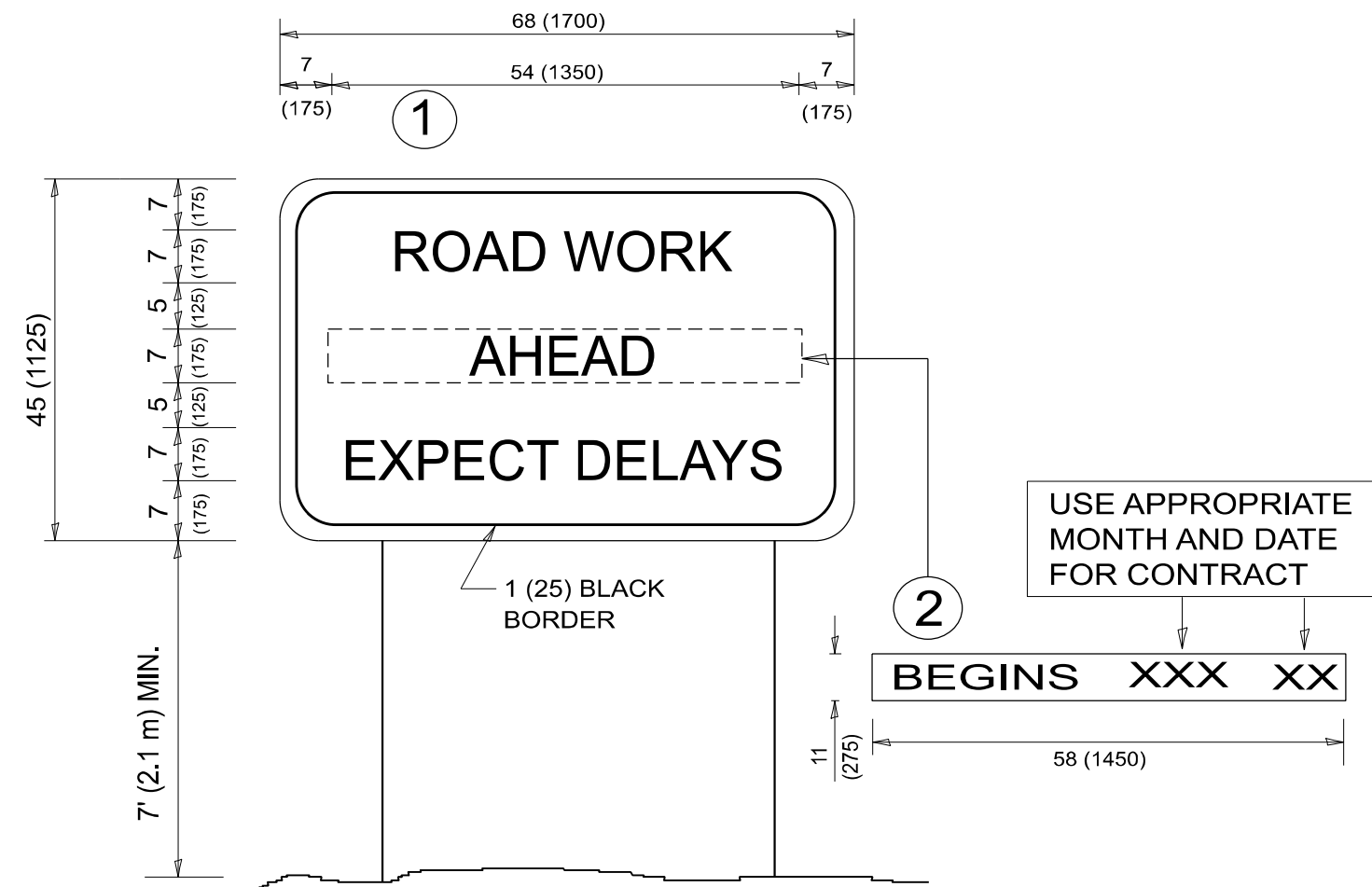
USER NAME = AshrafAbdirabbu	DESIGNED -	REVISED - T. RAMMACHER 03-02-98
PLOT SCALE = 0.16666633' / in.	DRAWN -	REVISED - E. GOMEZ 08-28-00
PLOT DATE = 12/13/2023	CHECKED -	REVISED - E. GOMEZ 08-28-00
	DATE - 09-18-94	REVISED - A. SCHUETZE 09-15-16

**STATE OF ILLINOIS
DEPARTMENT OF TRANSPORTATION**

SHORT TERM PAVEMENT MARKING LETTERS AND SYMBOLS

SCALE: NONE SHEET 1 OF 1 SHEETS STA. ___+___ TO STA. ___+___

F.A.P. RTE.	SECTION	COUNTY	TOTAL SHEETS	SHEET NO.
66	FAP 0066 22 RS	MCHENRY	33	26
TC-16			CONTRACT NO. 62T62	
ILLINOIS FED. AID PROJECT				



NOTES:

1. USE BLACK LETTERING ON ORANGE BACKGROUND.
2. ERECT SIGNS IN ADVANCE OF THE LOCATION FOR THE "ROAD CONSTRUCTION AHEAD" SIGN AT LOCATIONS AS DIRECTED BY THE ENGINEER.
3. ERECT SIGN ① WITH INSTALLED PANEL ② ONE WEEK PRIOR TO THE START OF CONSTRUCTION.
4. REMOVE PANEL ② SOON AFTER THE START OF CONSTRUCTION.
5. SEE SPECIAL PROVISION FOR "TEMPORARY INFORMATION SIGNING" FOR ADDITIONAL INFORMATION.
6. ONE SIGN ASSEMBLY EQUALS 25.70 SQ. FT. (2.3 SQ. M.)
7. SHALL BE PAID FOR AS TEMPORARY INFORMATION SIGNING.

ALL DIMENSIONS ARE IN INCHES (MILLIMETERS) UNLESS OTHERWISE SHOWN.

MODEL: TC-22 (Sheet) FILE NAME: P:\Bids\2023\11\10\DOT\Documents\DOT Office\District 1\ORD Project\12882\CADD\Info\CAD\Sheet\12882-11-10-23.dgn

USER NAME = AshrafAbdirabbu	DESIGNED -	REVISED - R. MIRS 09-15-97
PLOT SCALE = 0.16666633' / in.	DRAWN -	REVISED - R. MIRS 12-11-97
PLOT DATE = 12/13/2023	CHECKED -	REVISED - T. RAMMACHER 02-02-99
	DATE -	REVISED - C. JUCIUS 01-31-07

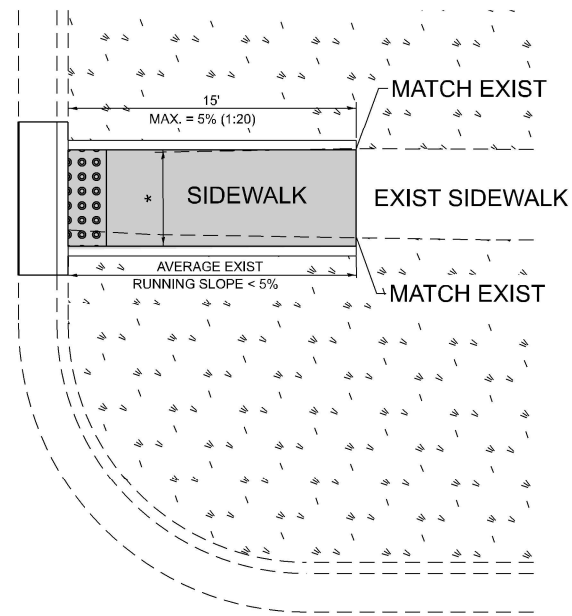
**STATE OF ILLINOIS
DEPARTMENT OF TRANSPORTATION**

ARTERIAL ROAD INFORMATION SIGN	
SCALE: NONE	SHEET 1 OF 1 SHEETS
STA. ___+___	TO STA. ___+___

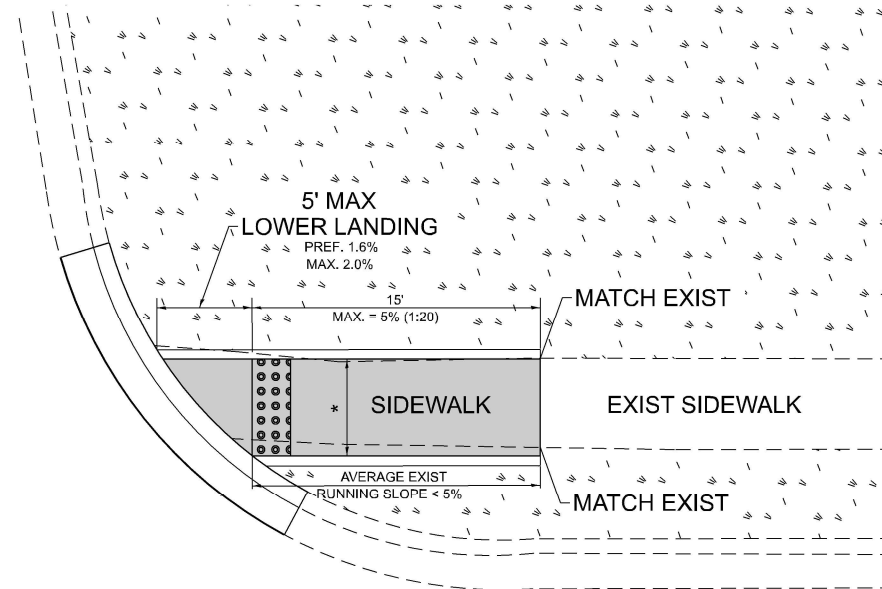
F.A.P. RTE.	SECTION	COUNTY	TOTAL SHEETS	SHEET NO.
66	FAP 0066 22 RS	MCHENRY	33	27
TC-22			CONTRACT NO. 62T62	
ILLINOIS FED. AID PROJECT				

ADA DETAIL FOR SINGLE PERPENDICULAR CURB RAMPS W/ EXIST. 5% OR LESS RUN. SLOPE

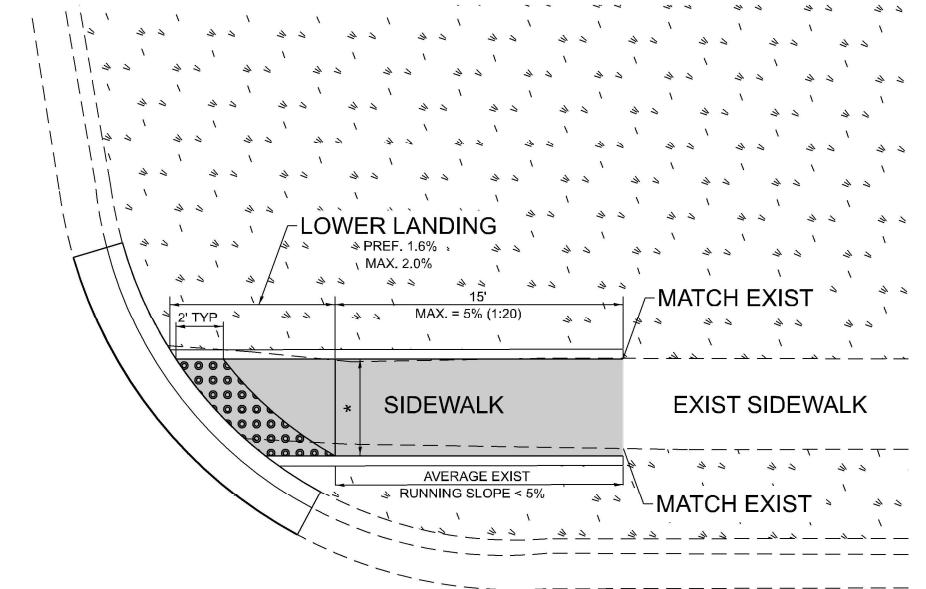
PD-01A



PD-01B



PD-01C



LEGEND

- EXIST. GRASS
- PROPOSED SIDEWALK
- DETECTABLE WARNINGS
- PROPOSED SIDE CURB

CONSTRUCTION NOTES:

- 1) ALL CROSS SLOPES ARE PREFERRED 1.6% (1:64), MAXIMUM 2% (1:50) EXCEPT WHEN TRANSITIONING TO EXISTING SIDEWALK
- * MATCH EXISTING SIDEWALK WIDTH

MODEL: PD-01 (Sheet)
FILE NAME: P:\Bids\2019\11\11\DOT\Documents\DOT Office\District 1\ORD Project\12822\CADD\Drawings\12822-01-01-01.dwg

USER NAME = Ashraf,Abdirabou	DESIGNED -	REVISED -
	DRAWN - R. LEDEZMA	REVISED -
PLOT SCALE = 0.16666633' / in.	CHECKED -	REVISED -
PLOT DATE = 12/4/2023	DATE - 10/02/2019	REVISED -

**STATE OF ILLINOIS
DEPARTMENT OF TRANSPORTATION**

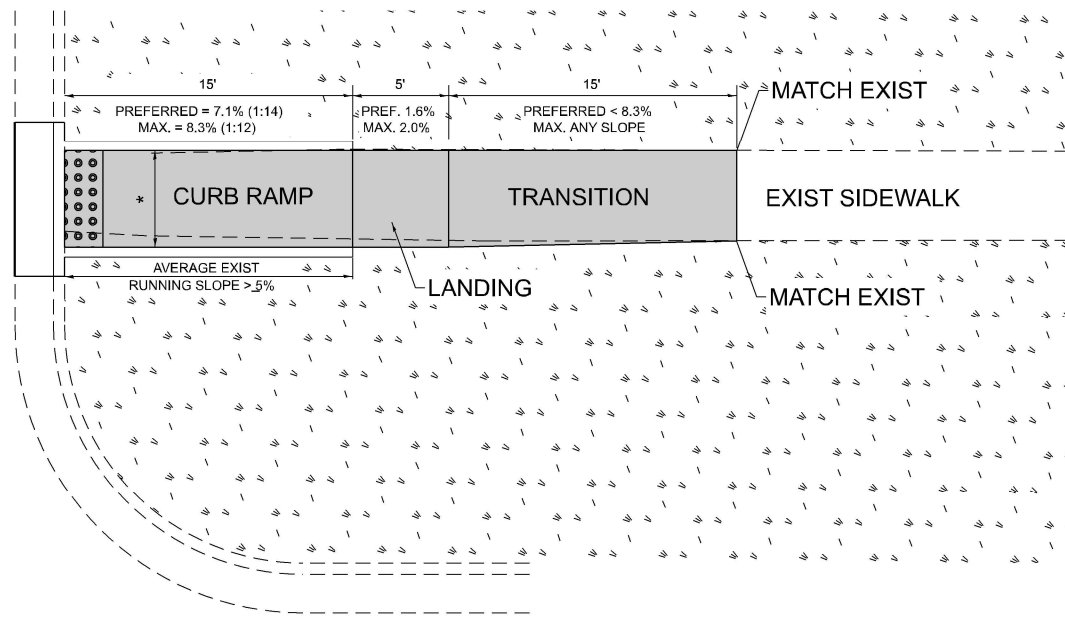
**PROJECT DETAIL FOR SINGLE PERPENDICULAR CURB RAMPS
(PD-01)**

SCALE: NONE SHEET 1 OF 1 SHEETS STA. ___+___ TO STA. ___+___

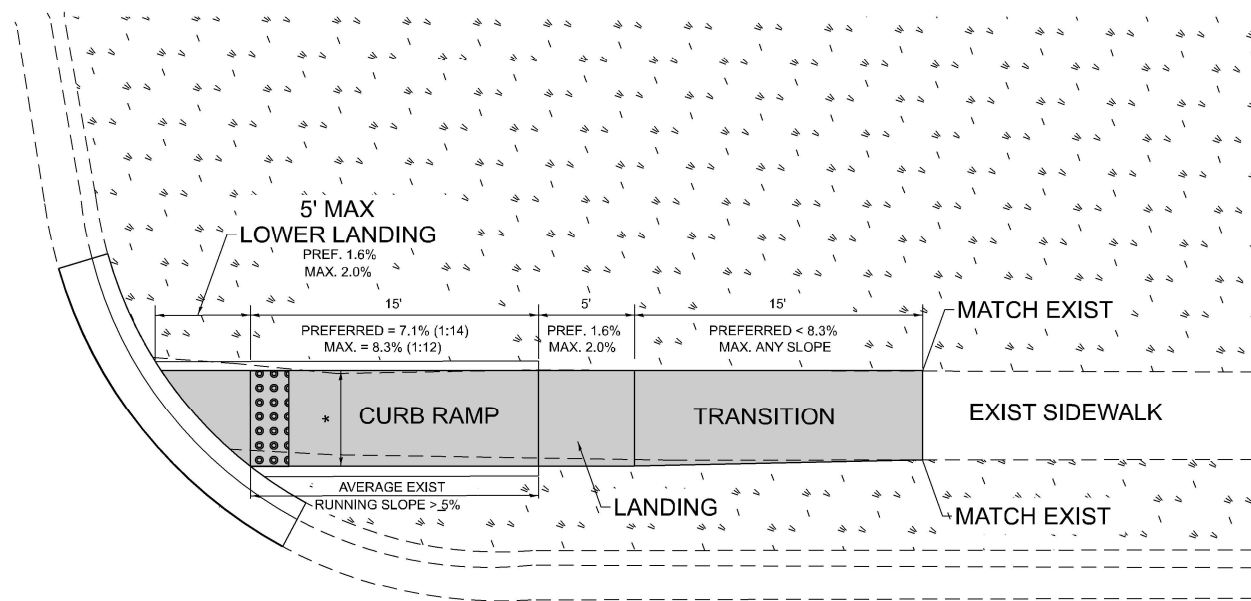
F.A.P. RTE.	SECTION	COUNTY	TOTAL SHEETS	SHEET NO.
66	FAP 0066 22 RS	MCHENRY	33	28
PD-01			CONTRACT NO. 62T62	
ILLINOIS FED. AID PROJECT				

ADA DETAIL FOR SINGLE PERPENDICULAR CURB RAMPS W/ EXIST. 5% OR GREATER RUN. SLOPE

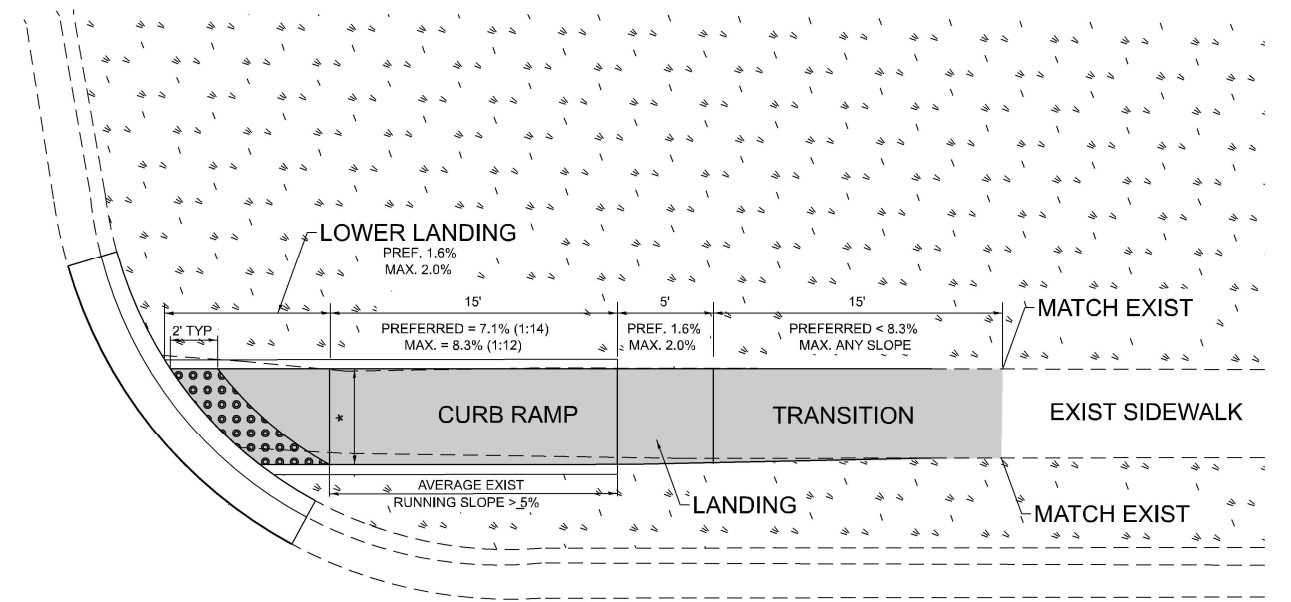
PD-02A



PD-02B



PD-02C



LEGEND

- EXIST. GRASS
- PROPOSED SIDEWALK
- PROPOSED SIDE CURB
- DETECTABLE WARNINGS

CONSTRUCTION NOTES:

- 1) ALL CROSS SLOPES ARE PREFERRED 1.6% (1:64), MAXIMUM 2% (1:50) EXCEPT WHEN TRANSITIONING TO EXISTING SIDEWALK
- * MATCH EXISTING SIDEWALK WIDTH

MODEL: PD-02 (Sheet)
FILE NAME: P:\Bids\2019\11\11\DOT\Documents\DOT Office\District 1\ORD Project\120822\CADD\Drawings\120822-01-02A.dwg

USER NAME = Ashraf,Abdirabou	DESIGNED -	REVISED -
DRAWN - R. LEDEZMA	CHECKED -	REVISED -
PLOT SCALE = 0.166666833' / in.	DATE - 10/02/2019	REVISED -
PLOT DATE = 12/4/2023		

**STATE OF ILLINOIS
DEPARTMENT OF TRANSPORTATION**

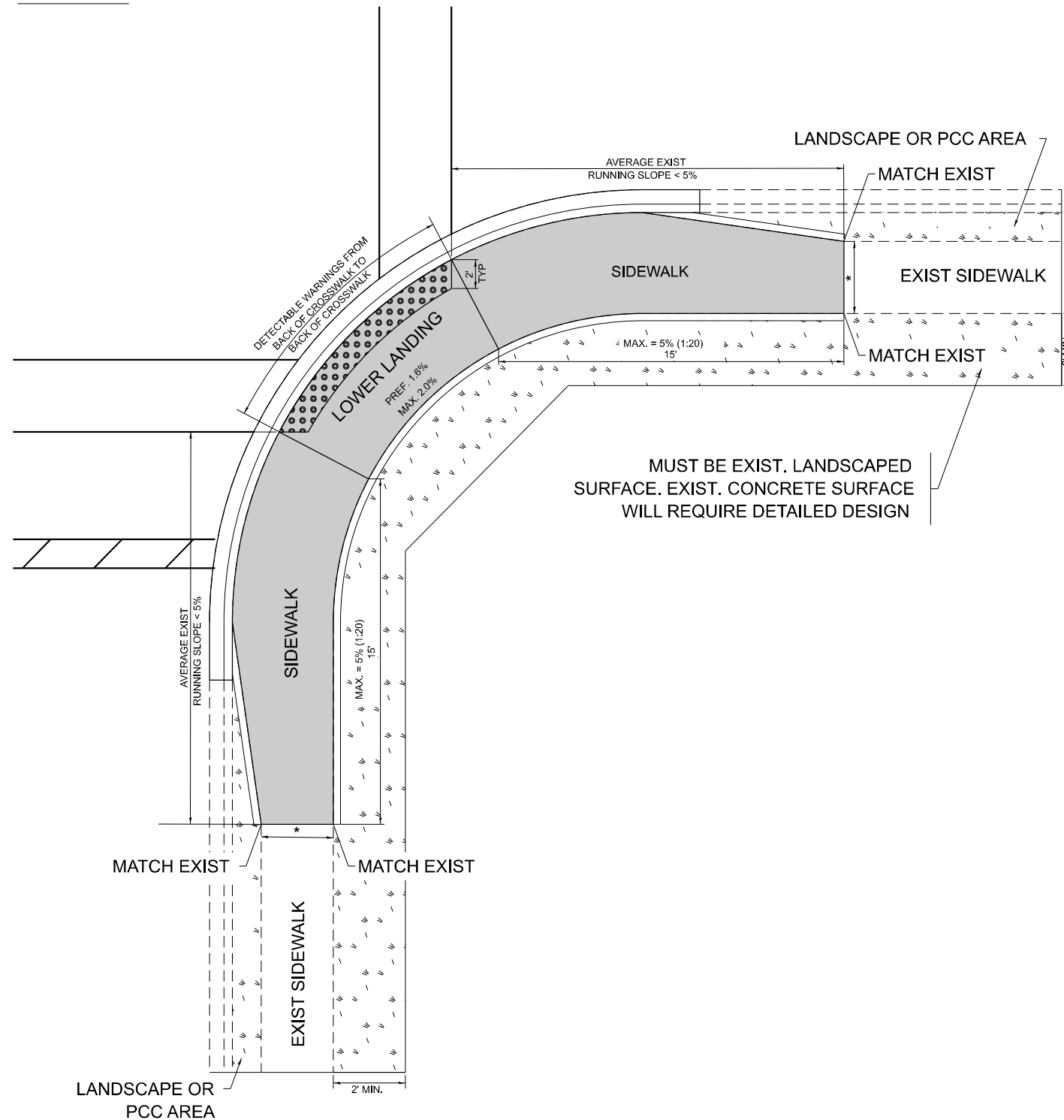
**PROJECT DETAIL FOR SINGLE PERPENDICULAR CURB RAMPS
(PD-02)**

SCALE: NONE SHEET 1 OF 1 SHEETS STA. ___+___ TO STA. ___+___

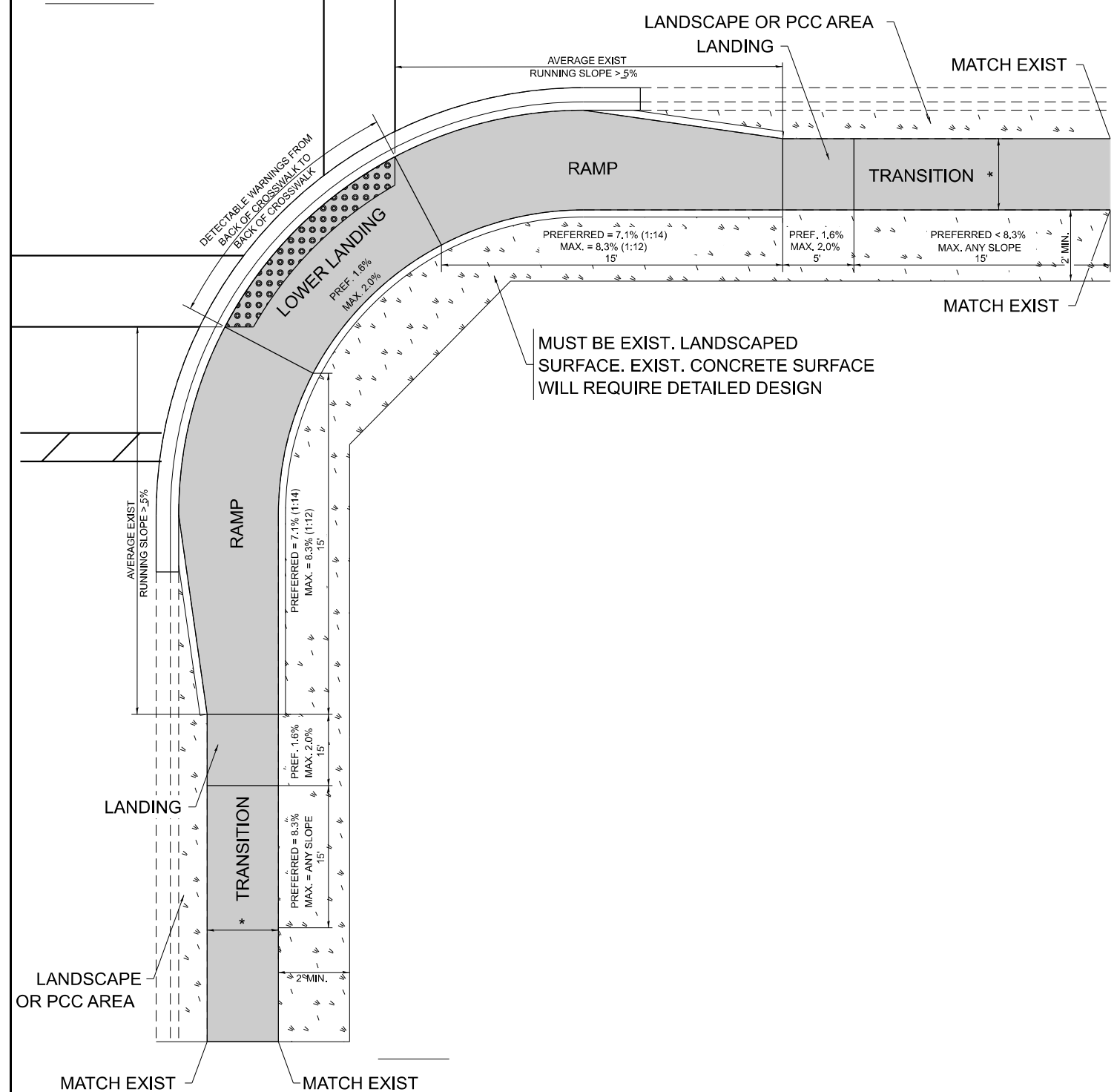
F.A.P. RTE.	SECTION	COUNTY	TOTAL SHEETS	SHEET NO.
66	FAP 0066 22 RS	MCHENRY	33	29
PD-02			CONTRACT NO. 62T62	
ILLINOIS FED. AID PROJECT				

ADA DETAIL FOR PARALLEL CURB RAMPS ADJACENT TO LANDSCAPING

PD-06A



PD-06B



LEGEND

- EXIST. GRASS
- PROPOSED SIDE CURB
- PROPOSED SIDEWALK
- DETECTABLE WARNINGS

CONSTRUCTION NOTES:

- 1) ALL CROSS SLOPES ARE PREFERRED 1.6% (1:64), MAXIMUM 2% (1:50) EXCEPT WHEN TRANSITIONING TO EXISTING SIDEWALK
- * MATCH EXISTING SIDEWALK WIDTH

MODEL: PD-06 (Sheet)
FILE NAME: P:\MIDOT\Documents\DOT Office\District 1\ORD - Project\12822\CADD\Drawings\12822-01-06-06.dwg

USER NAME = AshrafAbdirabbu	DESIGNED -	REVISED -
DRAWN - R. LEDEZMA	REVISIONS -	
PLOT SCALE = 0.16666633' / in.	CHECKED -	REVISIONS -
PLOT DATE = 12/4/2023	DATE - 10/02/2019	REVISIONS -

**STATE OF ILLINOIS
DEPARTMENT OF TRANSPORTATION**

**PROJECT DETAIL FOR PARALLEL CURB RAMPS
(PD-06)**

SCALE: NONE SHEET 1 OF 1 SHEETS STA. ___+___ TO STA. ___+___

F.A.P. RTE.	SECTION	COUNTY	TOTAL SHEETS	SHEET NO.
66	FAP 0066 22 RS	MCHENRY	33	33
PD-06			CONTRACT NO. 62T62	
ILLINOIS FED. AID PROJECT				