

DATE PLOTTED = 1/11/2024 9:34:42 AM
 BEN TABLE = \$RENTALS\$
 PLOT CONFIG = \$PLOTENVL\$
 FILE NAME = N:\PROJ\0020456\001\0020456.dwg

SPECIALTY ITEM	CODE NO.	ITEM	UNIT	TOTAL	ROADWAY 70% FED/ 30% LOCAL 0004	SANITARY 100% LOCAL 0004
*	66901006	REGULATED SUBSTANCES MONITORING	CAL DA	185	185	
	67000400	ENGINEER'S FIELD OFFICE, TYPE A	CAL MO	18	18	
	67100100	MOBILIZATION	L SUM	1	1	
	70103815	TRAFFIC CONTROL SURVEILLANCE	CAL DA	60	60	
	70300100	SHORT TERM PAVEMENT MARKING	FOOT	5,200	5,200	
	70300150	SHORT TERM PAVEMENT MARKING REMOVAL	SQ FT	8,735	8,735	1
	70307100	TEMPORARY PAVEMENT MARKING LETTERS AND SYMBOLS - TYPE IV TAPE	SQ FT	297	297	
	70307120	TEMPORARY PAVEMENT MARKING - LINE 4" - TYPE IV TAPE	FOOT	18,521	18,521	
	70307130	TEMPORARY PAVEMENT MARKING - LINE 6" - TYPE IV TAPE	FOOT	774	774	
	70307210	TEMPORARY PAVEMENT MARKING - LINE 24"- TYPE IV TAPE	FOOT	72	72	
	70400100	TEMPORARY CONCRETE BARRIER	FOOT	850	850	
	70600255	IMPACT ATTENUATORS, TEMPORARY (FULLY REDIRECTIVE, NARROW), TEST LEVEL 2	EACH	2	2	
*	72000100	SIGN PANEL - TYPE 1	SQ FT	37	37	
*	72000200	SIGN PANEL - TYPE 2	SQ FT	64	64	
*	72800100	TELESCOPING STEEL SIGN SUPPORT	FOOT	20	20	
*	78000100	THERMOPLASTIC PAVEMENT MARKING - LETTERS AND SYMBOLS	SQ FT	284	284	

SPECIALTY ITEM	CODE NO.	ITEM	UNIT	TOTAL	ROADWAY 70% FED/ 30% LOCAL 0004	SANITARY 100% LOCAL 0004
*	78000200	THERMOPLASTIC PAVEMENT MARKING - LINE 4"	FOOT	5,113	5,113	
*	78000400	THERMOPLASTIC PAVEMENT MARKING - LINE 6"	FOOT	1,844	1,844	
*	78000600	THERMOPLASTIC PAVEMENT MARKING - LINE 12"	FOOT	322	322	
*	78000650	THERMOPLASTIC PAVEMENT MARKING - LINE 24"	FOOT	252	252	
	78300200	RAISED REFLECTIVE PAVEMENT MARKER REMOVAL	EACH	68	68	
	78300201	PAVEMENT MARKING REMOVAL - GRINDING	SQ FT	1,950	1,950	
	78300202	PAVEMENT MARKING REMOVAL - WATER BLASTING	SQ FT	8,449	8,449	
*	81028200	UNDERGROUND CONDUIT, GALVANIZED STEEL, 2" DIA.	FOOT	785	785	
*	81028220	UNDERGROUND CONDUIT, GALVANIZED STEEL, 3" DIA.	FOOT	124	124	
*	81028240	UNDERGROUND CONDUIT, GALVANIZED STEEL, 4" DIA.	FOOT	350	350	
*	81400100	HANDHOLE	EACH	4	4	
*	81400200	HEAVY-DUTY HANDHOLE	EACH	2	2	
*	81400300	DOUBLE HANDHOLE	EACH	2	2	
*	85000200	MAINTENANCE OF EXISTING TRAFFIC SIGNAL INSTALLATION	EACH	2	2	
*	86400100	TRANSCEIVER - FIBER OPTIC	EACH	1	1	
*	87300925	ELECTRIC CABLE IN CONDUIT, TRACER, NO. 14 1C	FOOT	1,004	1,004	

• SPECIALTY ITEMS



USER NAME = Roadway	DESIGNED - EPS	REVISED - 02/21/2024
	DRAWN - AMH	REVISED -
PLOT SCALE = 2.0000' / 1" =	CHECKED - DJO	REVISED -
PLOT DATE = 1/4/2024	DATE - DEC 2023	REVISED -

STATE OF ILLINOIS
DEPARTMENT OF TRANSPORTATION

SUMMARY OF QUANTITIES

SCALE: N.T.S. SHEET NO. 3 OF 6 SHEETS STA. TO STA.

F.A.U. RTE.	SECTION	COUNTY	TOTAL SHEETS	SHEET NO.
2791	12-00106-00-PV	COOK	125	7
CONTRACT NO. 61D77				
FED. ROAD DIST. NO. 1 ILLINOIS FED. AID PROJECT				

SPECIALTY ITEM	CODE NO.	ITEM	UNIT	TOTAL	ROADWAY 70% FED/ 30% LOCAL 0004	SANITARY 100% LOCAL 0004
	X6030310	FRAMES AND LIDS TO BE ADJUSTED (SPECIAL)	EACH	132	132	
	X7010216	TRAFFIC CONTROL AND PROTECTION (SPECIAL)	L SUM	1	1	
*	X8100863	INTERCEPT EXISTING CONDUIT	EACH	2	2	
*	X8620200	UNINTERRUPTABLE POWER SUPPLY (SPECIAL)	EACH	1	1	
*	X8710024	FIBER OPTIC CABLE IN CONDUIT, NO. 62.5/125, MM12F SM24F	FOOT	2,951	2,951	
*	X8760200	ACCESSIBLE PEDESTRIAN SIGNALS	EACH	8	8	
*	X8780012	CONCRETE FOUNDATION, TYPE A 12-INCH DIAMETER	FOOT	16	16	
*	X8809005	LED SIGNAL FACE, LENS COVER	EACH	18	18	
*	XX004913	REMOVE FIBER OPTIC CABLE FROM CONDUIT	FOOT	2,712	2,712	
*	XX006249	SANITARY SEWER, PVC C909 8"	FOOT	55		55
*	XX006250	SANITARY SEWER, PVC D3034 10"	FOOT	929		929
*	XX007622	ELECTRIC METER	EACH	1	1	



DATE PLOTTED = 1/4/2024 9:34:43 AM
 PEN TABLE = #PENTBL\$
 PLOT CONFIG = #PLOTINL\$
 FILE NAME = N:\PROJ\08220456.dwg\08220456.dwg\Design\Misc_Sheets\08220456.dwg

• SPECIALTY ITEMS



USER NAME = Roadway	DESIGNED - EPS	REVISED - 02/21/2024
	DRAWN - AMH	REVISED -
PLOT SCALE = 2.0000' / in.	CHECKED - DJO	REVISED -
PLOT DATE = 1/4/2024	DATE - DEC 2023	REVISED -

STATE OF ILLINOIS
DEPARTMENT OF TRANSPORTATION

SUMMARY OF QUANTITIES

SCALE: N.T.S. SHEET NO. 6 OF 6 SHEETS STA. TO STA.

F.A.U. RTE.	SECTION	COUNTY	TOTAL SHEETS	SHEET NO.
2791	12-00106-00-PV	COOK	125	10
CONTRACT NO. 61D77				
FED. ROAD DIST. NO. 1 ILLINOIS FED. AID PROJECT				

STAGING AND TRAFFIC CONTROL GENERAL NOTES

- STAGING WILL BE DONE SEQUENTIALLY AS SHOWN ON THE PLANS TO MAINTAIN TRAFFIC THROUGHOUT THE AREA.
- THE CONTRACTOR SHALL MAKE NECESSARY PROVISIONS FOR EMERGENCY ACCESS TO STREETS THAT ARE TO BE CLOSED. COST WILL BE INCLUDED IN TRAFFIC CONTROL AND PROTECTION ITEMS OR STANDARDS.
- THE CONTRACTOR SHALL NOTIFY THE ENGINEER 7 CALENDAR DAYS IN ADVANCE OF TRAFFIC CONTROL SWITCH BETWEEN STAGES. THE CONTRACTOR SHALL ALSO CONFIRM THE PLANNED STAGE CHANGE WITH THE ENGINEER 24 HOURS PRIOR.
- PRIOR TO REMOVING TRAFFIC CONTROL AND OPENING CLOSED PAVEMENT AREAS TO TRAFFIC, THE CONTRACTOR SHALL SWEEP THE PAVEMENT SURFACE CLEAN. THIS WORK WILL NOT BE PAID FOR SEPARATELY BUT SHALL BE INCLUDED IN THE COST FOR TRAFFIC CONTROL AND PROTECTION PAY ITEMS.
- THE CONTRACTOR SHALL PROVIDE ACCESS TO ALL ENTRANCES THAT ARE TO REMAIN OPEN WITHIN A WORK ZONE AS REQUIRED PER THE AGGREGATE SURFACE COURSE FOR TEMPORARY ACCESS (D1) SPECIAL PROVISION.
- THE CONTRACTOR SHALL GAP CONSTRUCT THE PAVEMENT AND ENTRANCES TO MAINTAIN ACCESS. ENTRANCES TO THE GAS STATION OR LOADING DOCKS WILL REQUIRE COORDINATION WITH THE PROPERTY OWNERS FOR TEMPORARY ACCESS, DURATION OF CONSTRUCTION AND TIMING OF CONSTRUCTION IN ORDER TO MINIMIZE INCONVENIENCE TO BUSINESS OPERATIONS.
- EXISTING OR TEMPORARY PAVEMENT MARKINGS REMOVED AS A RESULT OF HMA SURFACE REMOVAL OR PAVEMENT REMOVAL WILL NOT BE PAID FOR SEPARATELY. EXISTING PAVEMENT MARKINGS TO BE REMOVED WILL BE PAID FOR AS PAVEMENT MARKING REMOVAL-GRINDING.
- PAVEMENT, CURB, SIDEWALK AND DRIVEWAYS TO BE REMOVED MUST BE COMPLETELY REMOVED FROM THE SITE BY THE END OF THE DAY. NO REMOVAL ITEMS MAY BE STORED ON SITE.
- WORKER SIGNS (W21-1) SHALL BE REMOVED OR COVERED WHEN WORKERS ARE NOT PRESENT FOR MORE THAN ONE HOUR.
- CONTRACTOR SHALL CONTACT KALPANA KANNAN-HOSADURGA, THE DISTRICT ONE TRAFFIC CONTROL SUPERVISOR, AT KALPANA.KANNAN-HOSADURGA@ILLINOIS.GOV A MINIMUM OF 72 HOURS IN ADVANCE OF BEGINNING WORK.
- DROP-OFFS ADJACENT TO THE TRAVEL LANE SHALL BE KEPT TO A MINIMUM. PROTECTION OF THE DROP-OFF SHALL BE ACCORDING TO THE IDOT BUREAU OF SAFETY PROGRAMS AND ENGINEERING, SAFETY ENGINEERING POLICY MEMORANDUM 4-21. DROP-OFFS GREATER THAN OR EQUAL TO 12" AT LOCATIONS WHERE THE DROP-OFF IS LOCATED WITHIN 8 FEET OF THE EDGE OF TRAVEL LANE SHALL BE BACKFILLED IN ACCORDANCE WITH TABLE 2, CONDITION II OF THE SAFETY 4-21 POLICY. THE CONTRACTOR SHALL BE RESPONSIBLE FOR ENSURING THAT THAT THE DROP-OFF AREAS MEET THE OFFSET, HEIGHT, AND DURATION REQUIREMENTS TO USE BARRICADES AT THE END OF EACH WORKDAY. THIS MAY REQUIRE THE CONTRACTOR TO REPLACE OR PLACE SUFFICIENT MATERIAL IN THE EXCAVATION TO REDUCE THE DROP-OFF TO BE COMPLIANT WITH THE REQUIREMENTS FOR USE OF BARRICADES. NO ADDITIONAL COMPENSATION SHALL BE ALLOWED TO COMPLY WITH THIS REQUIREMENT. WHERE TEMPORARY CONCRETE BARRIER IS PROVIDED, THIS REQUIREMENT IS NULLIFIED.

FOR USE OF BARRICADES, NO ADDITIONAL COMPENSATION SHALL BE ALLOWED TO COMPLY WITH THIS REQUIREMENT. WHERE TEMPORARY CONCRETE BARRIER IS PROVIDED, THIS REQUIREMENT IS NULLIFIED.

STAGING AND TRAFFIC CONTROL SEQUENCE OF CONSTRUCTION

PRE-STAGE

CONSTRUCTION

- MAKE CONNECTION TO EXISTING SANITARY STRUCTURE.
- INSTALL PIPE FROM EXISTING STRUCTURE TO STA 50+20 AND INSTALL DROP MANHOLE
- INSTALL PIPE FROM STA 50+20 TO STA 49+75
- INSTALL PCC BASE COURSE THROUGH INTERSECTION.
- INSTALL TEMPORARY SIGNALS.

TRAFFIC CONTROL

- WORK ACROSS THE INTERSECTION SHALL BE DONE WITH FLAGGERS MAINTAINING ONE LANE IN EACH DIRECTION AT ALL TIMES. WORK WITHIN THE INTERSECTION SHALL ONLY BE DONE BETWEEN THE HOURS OF 8:30 AM AND 4:30 PM DAILY. OPEN TRENCHES SHALL BE PLATED AT THE END OF EACH DAY.

STAGE 1

CONSTRUCTION

- INSTALL TEMPORARY CONCRETE BARRIER AND ATTENUATORS AS SHOWN ON THE PLANS.
- INSTALL SANITARY SEWER, MANHOLES AND PCC BASE COURSE ON OAKTON STREET FROM STA 49+75 TO THE BEGINNING OF THE PROJECT.

TRAFFIC CONTROL

- OAKTON STREET - CLOSE INSIDE LANES USING STANDARD 701602 AND AS SHOWN IN THE TRAFFIC CONTROL PLANS. SANITARY TRENCH MUST BE PLATED OR FILLED TO NO LESS THAN 12" BELOW THE EXISTING SURFACE AT THE END OF EACH DAY.

STAGE 2

CONSTRUCTION

- RECONSTRUCT AUSTIN AVENUE SOUTH OF OAKTON STREET.
- MILL AND RESURFACE OAKTON.
- ESTABLISH PERMANENT PAVEMENT MARKINGS ON OAKTON STREET.

TRAFFIC CONTROL

- AUSTIN AVENUE - USING STANDARD 701501 AND THE TRAFFIC CONTROL PLANS THE CONTRACTOR SHALL PROVIDE A FLAGGER SO THAT VEHICLES CAN ACCESS THOSE PROPERTIES.
- THE CONTRACTOR SHALL COORDINATE WORK SO THAT THE ROADWAY CAN BE OPENED TO TWO-WAY TRAFFIC AT THE END OF EACH DAY. AT A MINIMUM THE CONTRACTOR SHALL PROVIDE AN AGGREGATE SURFACE FOR TRAFFIC.

OAKTON STREET - MAINTAIN TRAFFIC USING STANDARDS 701427 AND 701501.

STAGE 3

CONSTRUCTION

- REMOVE OUTSIDE EXISTING 11 FEET OF PAVEMENT, CURB AND GUTTER, SIDEWALK AND DRIVEWAYS ALONG SOUTH BOUND AUSTIN AVENUE FROM STA 102+30 TO STA 126+90.
- INSTALL STORM SEWER.
- CONSTRUCT CURB AND GUTTER
- CONSTRUCT HMA BINDER.
- CONSTRUCT DRIVEWAYS AND SIDEWALKS.

TRAFFIC CONTROL

- AUSTIN AVENUE - MAINTAIN TRAFFIC AS SHOWN IN THE MAINTENANCE OF TRAFFIC PLANS USING STANDARD 701606 AND 701701.

STAGE 4

CONSTRUCTION

- REMOVE OUTSIDE EXISTING 11 FEET OF PAVEMENT, CURB AND GUTTER, SIDEWALK AND DRIVEWAYS ALONG NORTH BOUND AUSTIN AVENUE FROM STA 102+30 TO STA 126+90.
- CONSTRUCT CURB AND GUTTER
- CONSTRUCT HMA BINDER.
- CONSTRUCT DRIVEWAYS AND SIDEWALKS.

TRAFFIC CONTROL

- AUSTIN AVENUE - MAINTAIN TRAFFIC AS SHOWN IN THE MAINTENANCE OF TRAFFIC PLANS USING STANDARD 701606 AND 701701.

STAGE 5

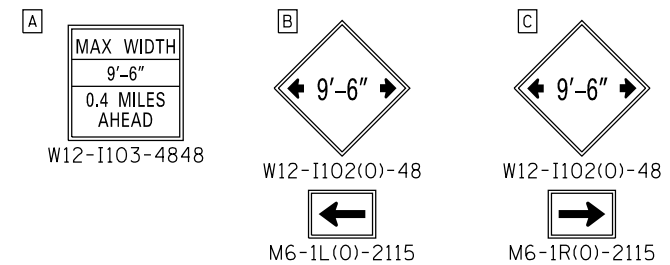
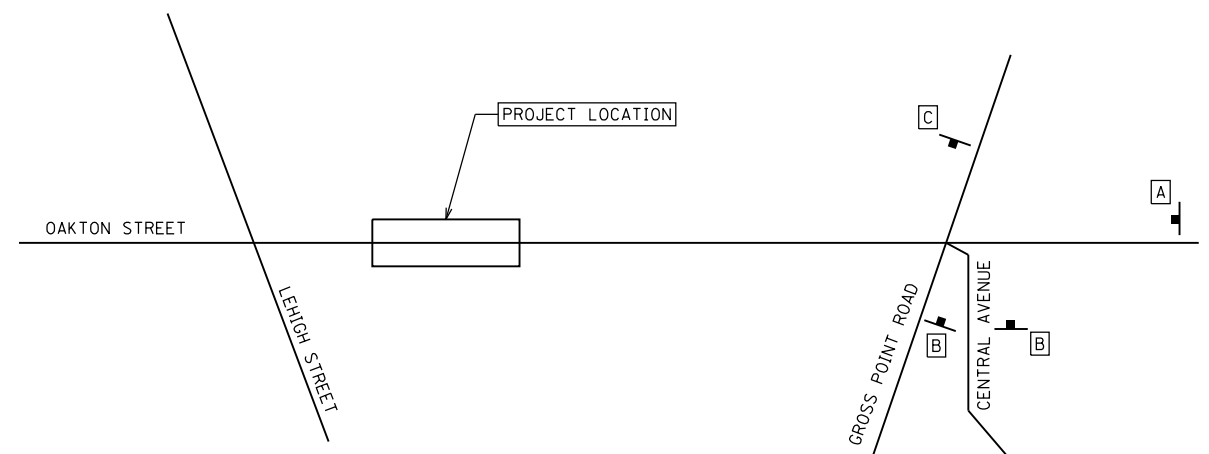
CONSTRUCTION

- MILL REMAINING SURFACE ON AUSTIN AVENUE.
- PAVE SURFACE COURSE ON AUSTIN AVENUE.
- ESTABLISH PERMANENT PAVEMENT MARKING ON AUSTIN AVENUE.
- COMPLETE RESTORATION
- COMPLETE PUNCHLIST.

TRAFFIC CONTROL

- AUSTIN AVENUE - MAINTAIN TRAFFIC USING STANDARDS 701427, 701501 AND 701701.

WIDTH RESTRICTION DETAIL



NOTE:
CONTRACTOR TO PLACE SIGNS 500' FEET AHEAD OF EACH INTERSECTION

DATE PLOTTED = 2/21/2024 8:22:44 AM
PEN TABLE = \$PENTRIBL\$
PLOT CONFIG = \$PLOTORVL\$
FILE NAME = N:\PROJECTS\2024\02\21\02212405.dwg

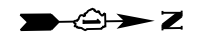


USER NAME = Roadway	DESIGNED - EPS	REVISED - 2/21/2024
PLOT SCALE = 2.0000' / in.	DRAWN - AMH	REVISED -
PLOT DATE = 2/21/2024	CHECKED - DJO	REVISED -
	DATE - DEC 2023	REVISED -

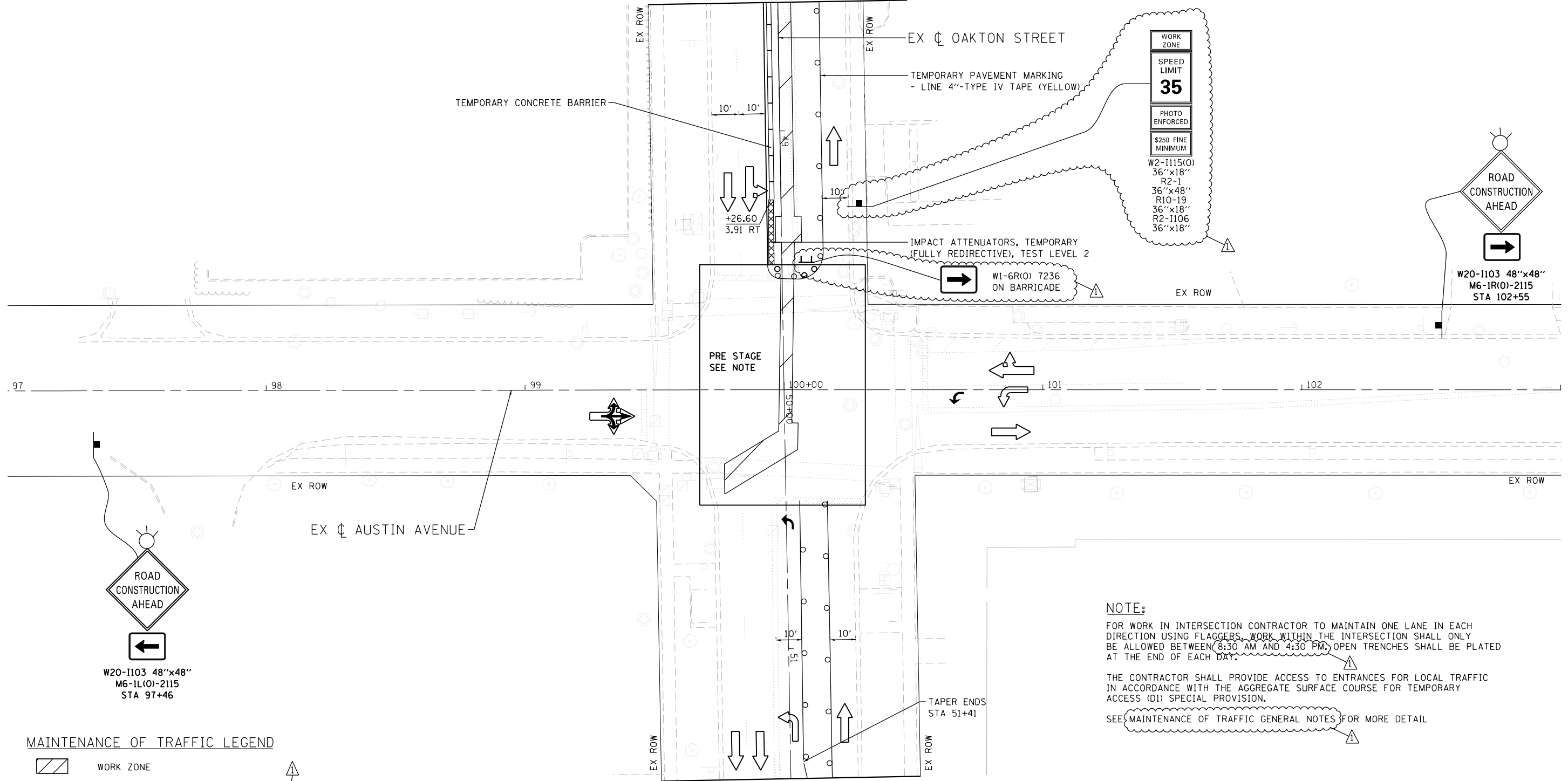
STATE OF ILLINOIS
DEPARTMENT OF TRANSPORTATION

SCALE: N.T.S.		SHEET NO. 1 OF 15 SHEETS		STA. TO STA.	
MAINTENANCE OF TRAFFIC GENERAL NOTES					

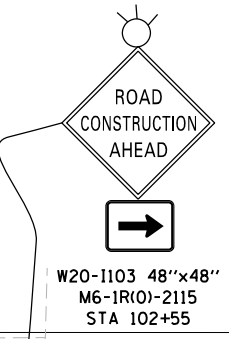
F.A.U. RTE. = 2791	SECTION = 12-00106-00-PV	COUNTY = COOK	TOTAL SHEETS = 125	SHEET NO. = 30
CONTRACT NO. 61D77				
FED. ROAD DIST. NO. 1 ILLINOIS FED. AID PROJECT				



MATCHLINE STA 48+50
SEE SHEET 34



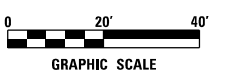
WORK ZONE
 SPEED LIMIT
35
 PHOTO ENFORCED
 \$250 FINE MINIMUM
 W2-1115(O)
 36"x18"
 R2-1
 36"x48"
 R10-19
 36"x18"
 R2-1106
 36"x18"



NOTE:
 FOR WORK IN INTERSECTION CONTRACTOR TO MAINTAIN ONE LANE IN EACH DIRECTION USING FLAGGERS. WORK WITHIN THE INTERSECTION SHALL ONLY BE ALLOWED BETWEEN 8:30 AM AND 4:30 PM. OPEN TRENCHES SHALL BE PLATED AT THE END OF EACH DAY.
 THE CONTRACTOR SHALL PROVIDE ACCESS TO ENTRANCES FOR LOCAL TRAFFIC IN ACCORDANCE WITH THE AGGREGATE SURFACE COURSE FOR TEMPORARY ACCESS (D) SPECIAL PROVISION.
 SEE MAINTENANCE OF TRAFFIC GENERAL NOTES FOR MORE DETAIL

MAINTENANCE OF TRAFFIC LEGEND

- WORK ZONE
- DIRECTION OF TRAVEL
- DRUM OR TYPE II BARRICADE AT 50' SPACING (20' ON LANE TAPERS), DIRECTIONAL INDICATOR BARRICADES SHALL BE USED ON ALL LANE CLOSURE TAPERS
- TYPE III BARRICADE
- MAINTENANCE OF TRAFFIC SIGN
- ARROW BOARD



MATCHLINE STA 51+50
SEE SHEET 35

DATE PLOTTED = 2/21/2024 11:21:15 AM
 PEN TABLE = \$PENTBL\$
 PLOT CONFIG = \$PLOTORVL\$
 FILE NAME = N:\PROJECTS\2024\02\2791\12-00106-00-01-01-01-01.dgn



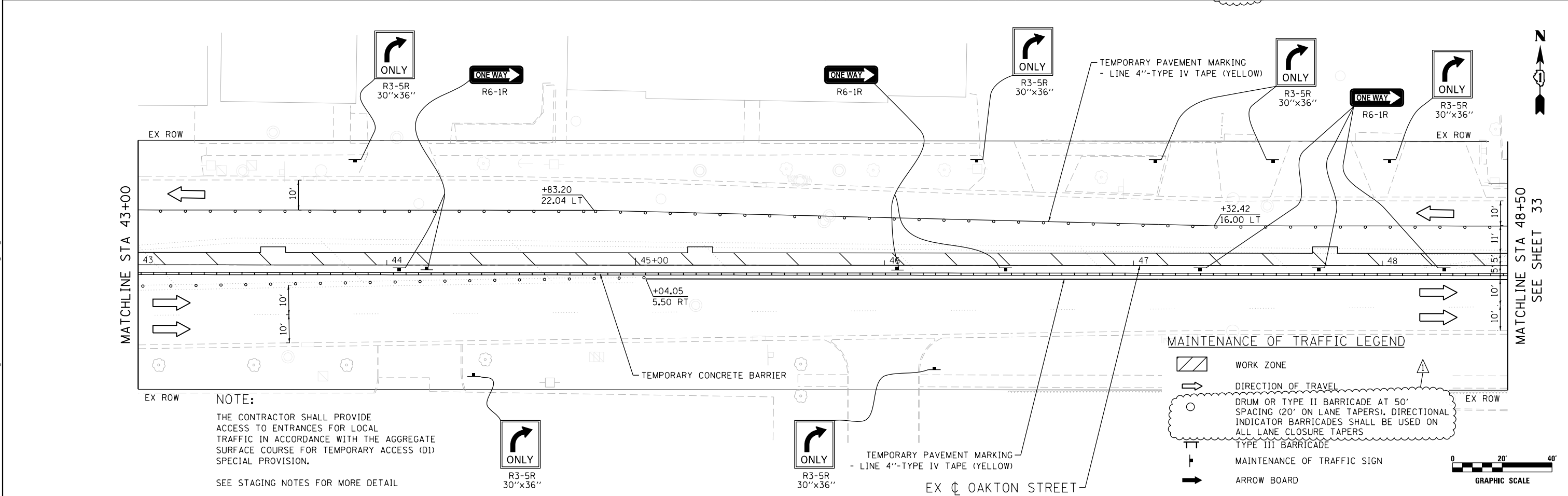
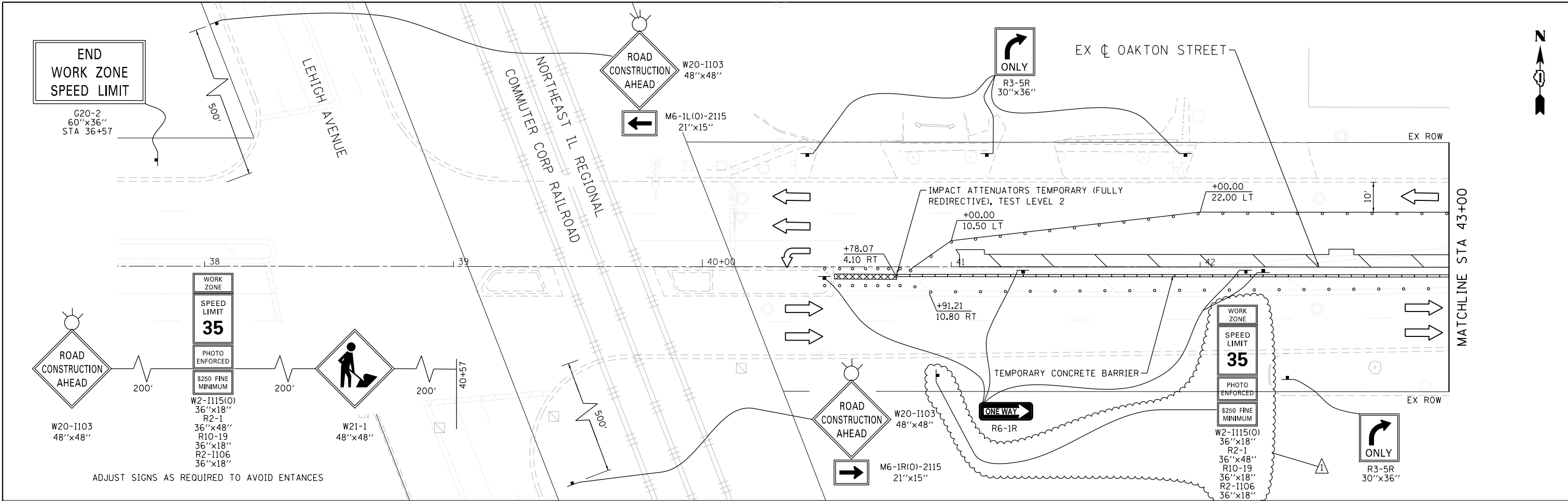
USER NAME = Roadway	DESIGNED - EPS	REVISED - 02/21/2024
PLOT SCALE = 40.0000' / 1" =	DRAWN - AMH	REVISED -
PLOT DATE = 2/21/2024	CHECKED - DJO	REVISED -
	DATE - DEC 2023	REVISED -

**STATE OF ILLINOIS
 DEPARTMENT OF TRANSPORTATION**

MAINTENANCE OF TRAFFIC - STAGE 1

SCALE: 1" = 20' SHEET NO. 4 OF 15 SHEETS STA. 97+00 TO STA. 103+00

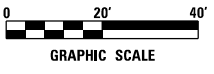
F.A.U. RTE.	SECTION	COUNTY	TOTAL SHEETS	SHEET NO.
2791	12-00106-00-PV	COOK	125	33
CONTRACT NO. 61D77				
<small>FED. ROAD DIST. NO. 1 ILLINOIS FED. AID PROJECT</small>				



NOTE:
 THE CONTRACTOR SHALL PROVIDE ACCESS TO ENTRANCES FOR LOCAL TRAFFIC IN ACCORDANCE WITH THE AGGREGATE SURFACE COURSE FOR TEMPORARY ACCESS (D1) SPECIAL PROVISION.
 SEE STAGING NOTES FOR MORE DETAIL

MAINTENANCE OF TRAFFIC LEGEND

- WORK ZONE
- DIRECTION OF TRAVEL
- DRUM OR TYPE II BARRICADE AT 50' SPACING (20' ON LANE TAPERS). DIRECTIONAL INDICATOR BARRICADES SHALL BE USED ON ALL LANE CLOSURE TAPERS
- TYPE III BARRICADE
- MAINTENANCE OF TRAFFIC SIGN
- ARROW BOARD



DATE PLOTTED = 2/21/2024 11:27:16 AM
 PEN TABLE = \$PENTBL\$
 PLOT CONFIG = \$PLOT\$
 FILE NAME = \$FILE\$



USER NAME = Roadway	DESIGNED - EPS	REVISED - 02/21/2024
	DRAWN - AMH	REVISED -
PLOT SCALE = 40.0000' / 1"	CHECKED - DJO	REVISED -
PLOT DATE = 2/21/2024	DATE - DEC 2023	REVISED -

**STATE OF ILLINOIS
 DEPARTMENT OF TRANSPORTATION**

MAINTENANCE OF TRAFFIC - STAGE 1

SCALE: 1" = 20' SHEET NO. 5 OF 15 SHEETS STA. 38+00 TO STA. 48+50

F.A.U. RTE.	SECTION	COUNTY	TOTAL SHEETS	SHEET NO.
2791	12-00106-00-PV	COOK	125	34
CONTRACT NO. 61D77				
FED. ROAD DIST. NO. 1 ILLINOIS FED. AID PROJECT				

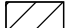
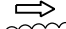






NOTES

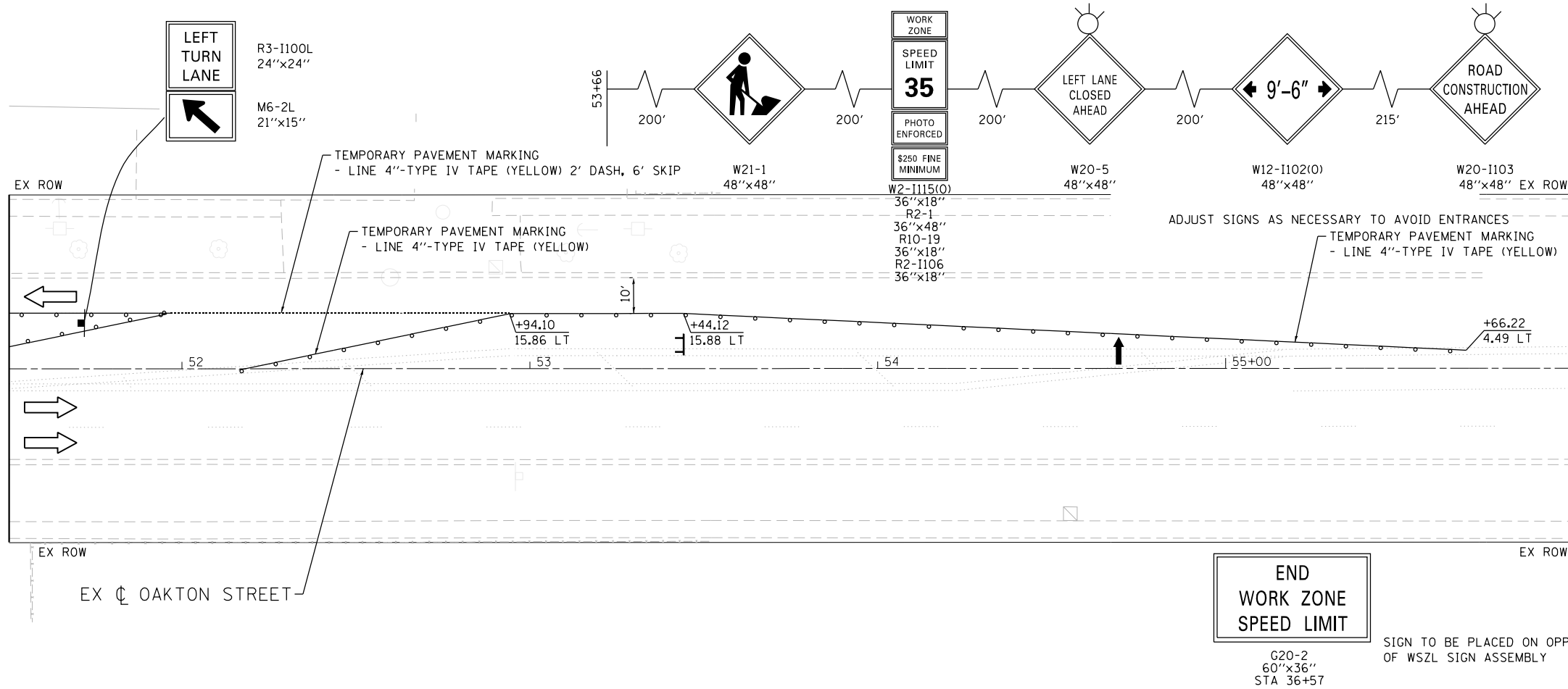
THE CONTRACTOR SHALL PROVIDE ACCESS TO ENTRANCES FOR LOCAL TRAFFIC IN ACCORDANCE WITH THE AGGREGATE SURFACE COURSE FOR TEMPORARY ACCESS (D1) SPECIAL PROVISION.

SEE STAGING NOTES FOR MORE DETAIL

MAINTENANCE OF TRAFFIC LEGEND

-  WORK ZONE
-  DIRECTION OF TRAVEL
-  DRUM OR TYPE II BARRICADE AT 50' SPACING (20' ON LANE TAPERS). DIRECTIONAL INDICATOR BARRICADES SHALL BE USED ON ALL LANE CLOSURE TAPERS
-  TYPE III BARRICADE
-  MAINTENANCE OF TRAFFIC SIGN
-  ARROW BOARD

MATCHLINE STA 51+50
SEE SHEET 33



DATE PLOTTED = 2/21/2024 11:21:17 AM
PEN TABLE = \$PLOTORVL\$
FILE NAME = N:\PROJECTS\2024\02\2791\12-00106-00-01\0228456.dwg
PLOT SCALE = 1/8" = 1'-0"



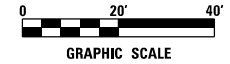
USER NAME = Roadway	DESIGNED - EPS	REVISED - 02/21/2024
	DRAWN - AMH	REVISED -
PLOT SCALE = 1/8" = 1'-0"	CHECKED - DJO	REVISED -
PLOT DATE = 2/21/2024	DATE - DEC 2023	REVISED -

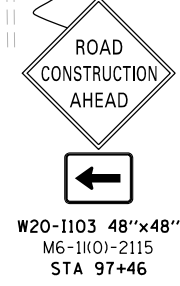
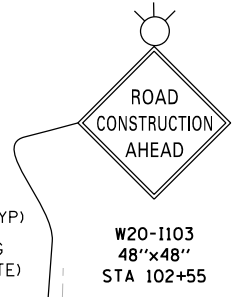
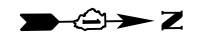
STATE OF ILLINOIS
DEPARTMENT OF TRANSPORTATION

MAINTENANCE OF TRAFFIC - STAGE 1

SCALE: 1" = 20' SHEET NO. 6 OF 15 SHEETS STA. 51+50 TO STA. 56+00

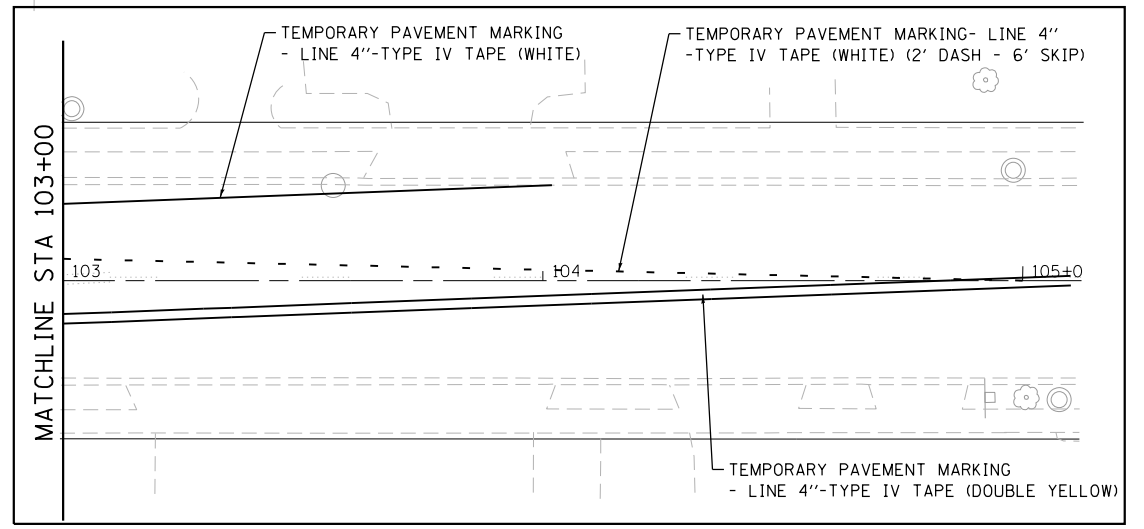
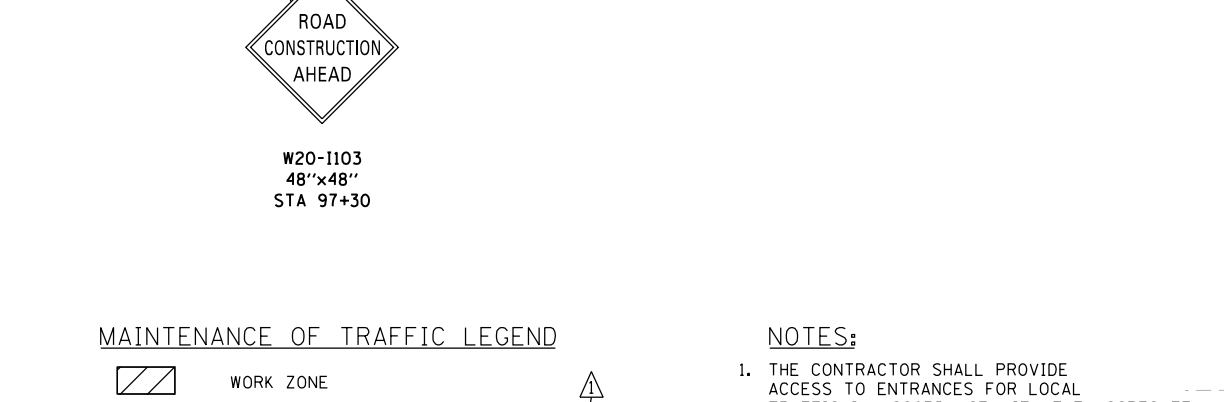
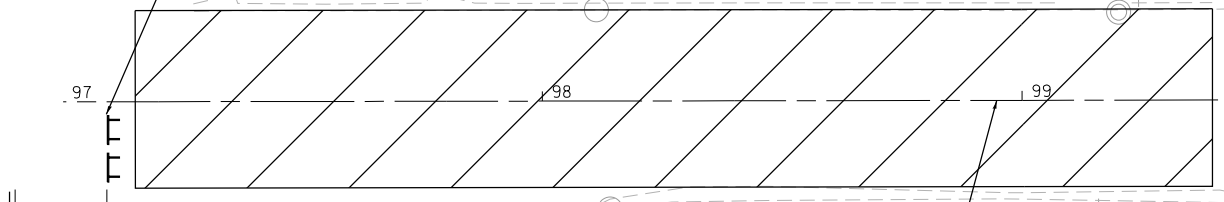
F.A.U. RTE.	SECTION	COUNTY	TOTAL SHEETS	SHEET NO.
2791	12-00106-00-PV	COOK	125	35
CONTRACT NO. 61D77				
FED. ROAD DIST. NO. 1 ILLINOIS FED. AID PROJECT				



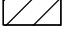
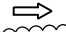

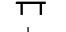

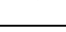


TYPE III BARRICADES TO BE PLACED DURING WORKING HOURS AND REMOVED AT END OF EACH DAY. TWO WAY TRAFFIC TO BE OPENED AT END OF EACH DAY ON A MINIMUM OF AGGREGATE BASE.

TYPE III BARRICADES TO BE PLACED DURING WORKING HOURS AND REMOVED AT END OF EACH DAY. TWO WAY TRAFFIC TO BE OPENED AT END OF EACH DAY ON A MINIMUM OF AGGREGATE BASE.



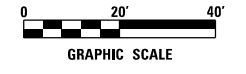
MAINTENANCE OF TRAFFIC LEGEND

-  WORK ZONE
-  DIRECTION OF TRAVEL
-  DRUM OR TYPE II BARRICADE AT 50' SPACING (20' ON LANE TAPERS). DIRECTIONAL INDICATOR BARRICADES SHALL BE USED ON ALL LANE CLOSURE TAPERS
-  TYPE III BARRICADE
-  MAINTENANCE OF TRAFFIC SIGN
-  ARROW BOARD

NOTES:

1. THE CONTRACTOR SHALL PROVIDE ACCESS TO ENTRANCES FOR LOCAL TRAFFIC IN ACCORDANCE WITH THE AGGREGATE SURFACE COURSE FOR TEMPORARY ACCESS (D1) SPECIAL PROVISION.
2. SEE STAGING NOTES FOR MORE DETAIL
3. SEE PAVEMENT MARKING PLAN SHEETS FOR PAVEMENT MARKING LAYOUT ALONG OAKTON STREET

MATCHLINE STA 103+00
SEE INSET



DATE PLOTTED = 2/21/2024 11:21:17 AM
PEN TABLE = \$PENFILES\$
PLOT CONFIG = \$PLOTORVLS\$
FILE NAME = N:\PROJ\00284565\00_00284565.dgn



USER NAME =	Roadway
DESIGNED -	EPS
DRAWN -	AMH
PLotted SCALE =	40,00000' / 1in.
PLotted DATE =	2/21/2024

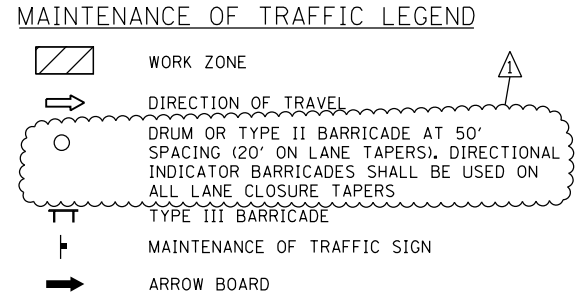
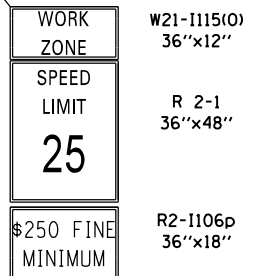
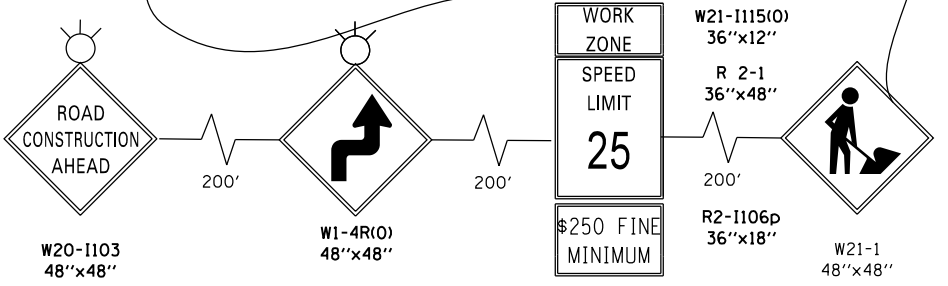
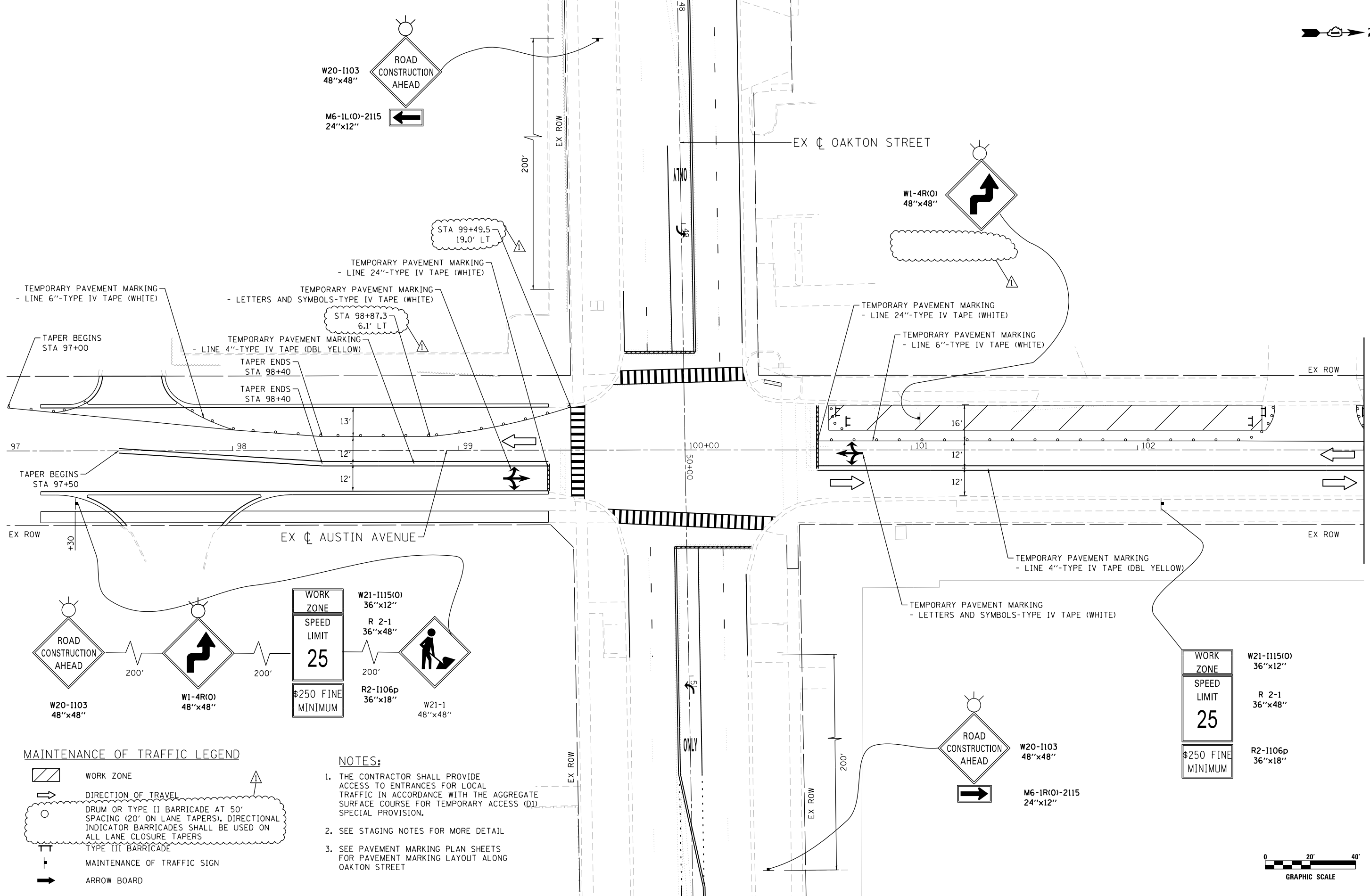
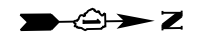
DESIGNED -	EPS	REVISED -	02/21/2024
DRAWN -	AMH	REVISED -	
CHECKED -	DJO	REVISED -	
DATE -	DEC 2023	REVISED -	

**STATE OF ILLINOIS
DEPARTMENT OF TRANSPORTATION**

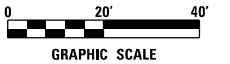
MAINTENANCE OF TRAFFIC - STAGE 2
SCALE: 1" = 20' SHEET NO. 1 OF 9 SHEETS STA. 97+00 TO STA. 103+00

F.A.U. RTE.	SECTION	COUNTY	TOTAL SHEETS	SHEET NO.
2791	12-00106-00-PV	COOK	125	36
CONTRACT NO. 61D77				

FED. ROAD DIST. NO. 1 | ILLINOIS FED. AID PROJECT



- NOTES:**
1. THE CONTRACTOR SHALL PROVIDE ACCESS TO ENTRANCES FOR LOCAL TRAFFIC IN ACCORDANCE WITH THE AGGREGATE SURFACE COURSE FOR TEMPORARY ACCESS (D1) SPECIAL PROVISION.
 2. SEE STAGING NOTES FOR MORE DETAIL
 3. SEE PAVEMENT MARKING PLAN SHEETS FOR PAVEMENT MARKING LAYOUT ALONG OAKTON STREET



DATE PLOTTED = 2/21/2024 11:21:18 AM
 PEN TABLE = \$PENTBL\$
 PLOT CONFIG = \$PLOTORV\$
 FILE NAME = \$VPLOT\$



USER NAME = Roadway	DESIGNED - EPS	REVISED - 02/21/2024
PLOT SCALE = 40.0000' / 1"	DRAWN - AMH	REVISED -
PLOT DATE = 2/21/2024	CHECKED - DJO	REVISED -
	DATE - DEC 2023	REVISED -

**STATE OF ILLINOIS
DEPARTMENT OF TRANSPORTATION**

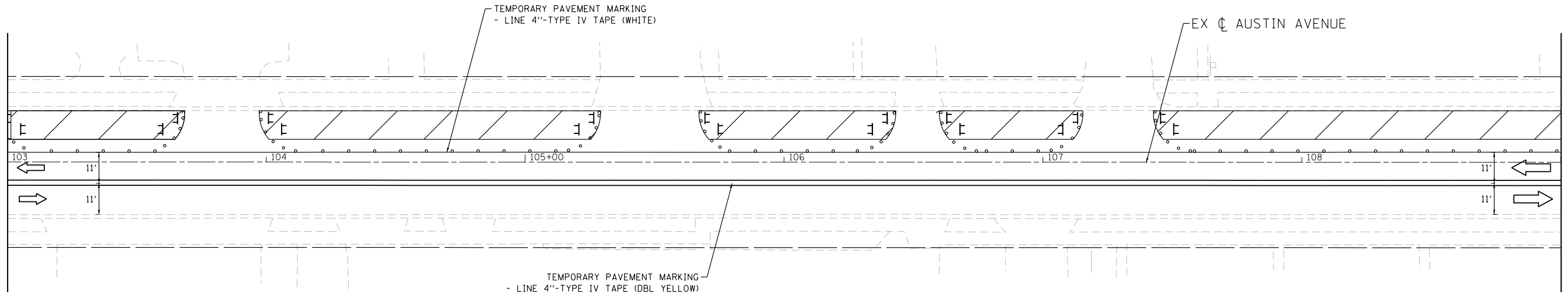
MAINTENANCE OF TRAFFIC - STAGE 3

SCALE: 1" = 20' SHEET NO. 2 OF 9 SHEETS STA. 97+00 TO STA. 103+00

F.A.U. RTE.	SECTION	COUNTY	TOTAL SHEETS	SHEET NO.
2791	12-00106-00-PV	COOK	125	37
CONTRACT NO. 61D77				
FED. ROAD DIST. NO. 1 ILLINOIS FED. AID PROJECT				



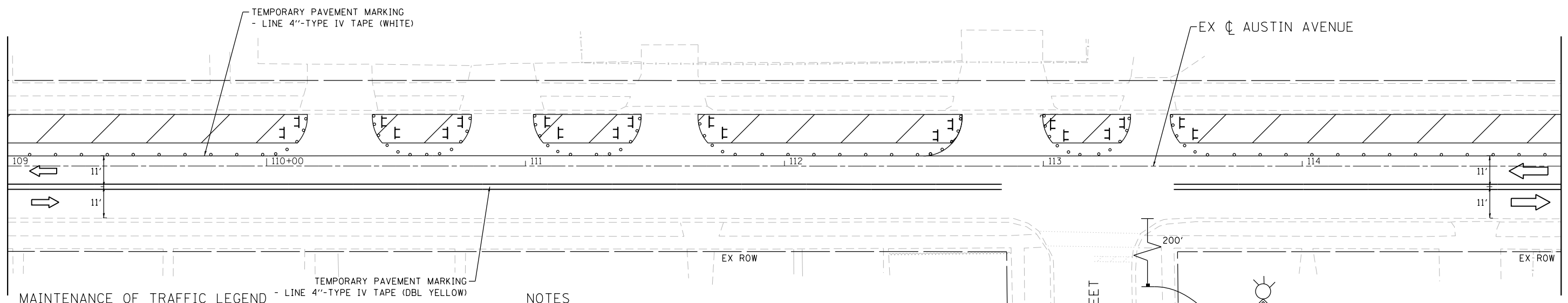
MATCHLINE STA 103+00
SEE SHEET 37



MATCHLINE STA 109+00



MATCHLINE STA 109+00



MATCHLINE STA 115+00
SEE SHEET 39

MAINTENANCE OF TRAFFIC LEGEND

- WORK ZONE
- DIRECTION OF TRAVEL
- DRUM OR TYPE II BARRICADE AT 50' SPACING (20' ON LANE TAPERS). DIRECTIONAL INDICATOR BARRICADES SHALL BE USED ON ALL LANE CLOSURE TAPERS
- TYPE III BARRICADE
- MAINTENANCE OF TRAFFIC SIGN
- ARROW BOARD

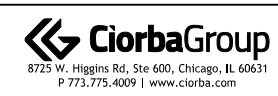
NOTES

THE CONTRACTOR SHALL PROVIDE ACCESS TO ENTRANCES FOR LOCAL TRAFFIC IN ACCORDANCE WITH THE AGGREGATE SURFACE COURSE FOR TEMPORARY ACCESS (D) SPECIAL PROVISION.

SEE STAGING NOTES FOR MORE DETAIL



DATE PLOTTED = 2/21/2024 11:21:18 AM
 PEN TABLE = \$PENTABLES\$
 PLOT CONFIG = \$PLOTORIG\$
 FILE NAME = N:\PROJECTS\2023\606\606_01\Drawings\MDT\02282465_01\02282465_01-04b_mct-st.tagn.dgn



USER NAME = Roadway	DESIGNED - EPS	REVISED - 02/21/2024
PLOT SCALE = 40.0000' / 1"	DRAWN - AMH	REVISED -
PLOT DATE = 2/21/2024	CHECKED - DJO	REVISED -
	DATE - DEC 2023	REVISED -

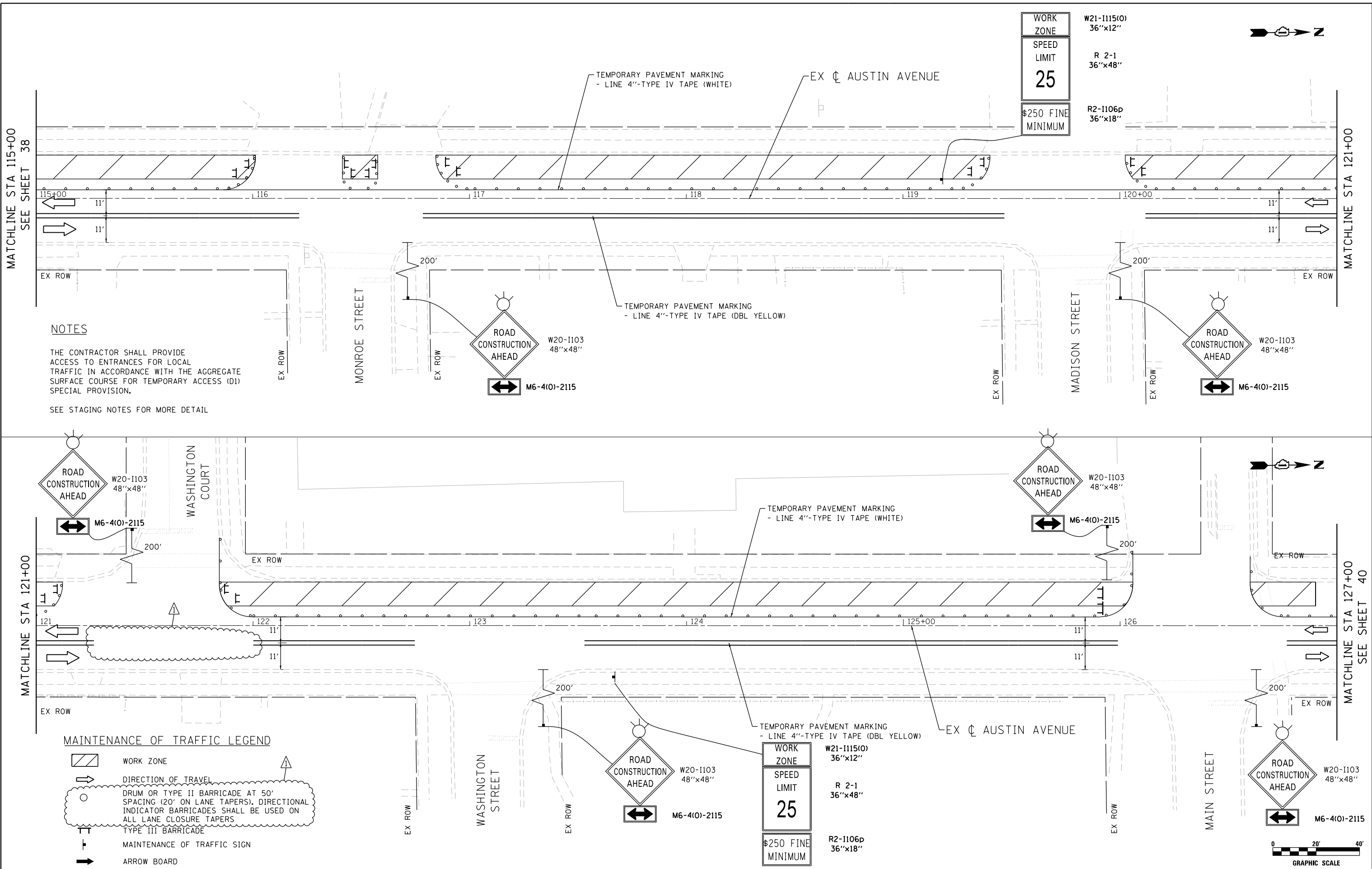
**STATE OF ILLINOIS
DEPARTMENT OF TRANSPORTATION**

MAINTENANCE OF TRAFFIC - STAGE 3

SCALE: 1" = 20' SHEET NO. 3 OF 9 SHEETS STA. 103+00 TO STA. 115+00

F.A.U. RTE.	SECTION	COUNTY	TOTAL SHEETS	SHEET NO.
2791	12-00106-00-PV	COOK	125	38
CONTRACT NO. 61D77				
FED. ROAD DIST. NO. 1 ILLINOIS FED. AID PROJECT				

DATE PLOTTED = 2/21/2024 11:21:19 AM
 PEN TABLE = \$PENTBL\$
 PLOT CONFIG = \$PLOTCONF\$
 FILE NAME = N:\PROJECTS\2023\61D77\02282456.dwg



WORK ZONE	W21-1115(O) 36"x12"
SPEED LIMIT	R 2-1 36"x48"
25	
\$250 FINE MINIMUM	R2-1106p 36"x18"

NOTES

THE CONTRACTOR SHALL PROVIDE ACCESS TO ENTRANCES FOR LOCAL TRAFFIC IN ACCORDANCE WITH THE AGGREGATE SURFACE COURSE FOR TEMPORARY ACCESS (D1) SPECIAL PROVISION.

SEE STAGING NOTES FOR MORE DETAIL

MAINTENANCE OF TRAFFIC LEGEND

- WORK ZONE
- DIRECTION OF TRAVEL
- DRUM OR TYPE II BARRICADE AT 50' SPACING (20' ON LANE TAPERS). DIRECTIONAL INDICATOR BARRICADES SHALL BE USED ON ALL LANE CLOSURE TAPERS
- TYPE III BARRICADE
- MAINTENANCE OF TRAFFIC SIGN
- ARROW BOARD

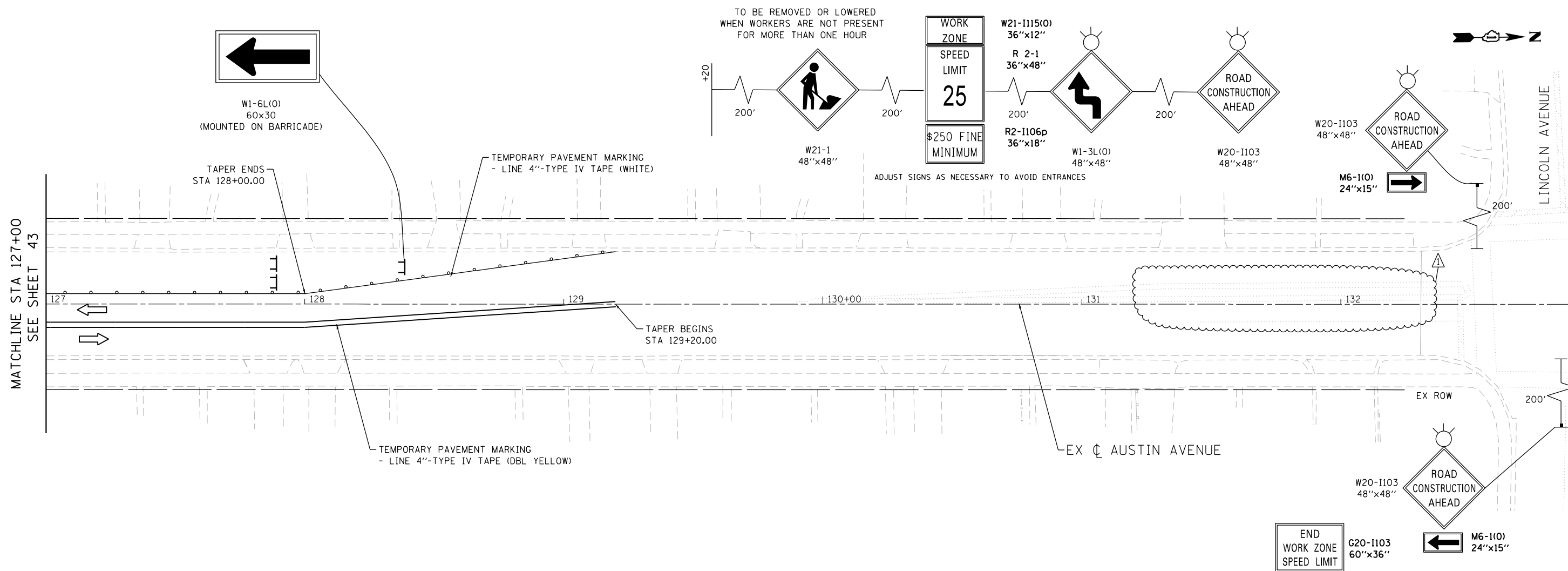


USER NAME = Roadway	DESIGNED - EPS	REVISED - 02/21/2024
PLOT SCALE = 40.0000' / 1"	DRAWN - AMH	REVISED -
PLOT DATE = 2/21/2024	CHECKED - DJO	REVISED -
	DATE - DEC 2023	REVISED -

STATE OF ILLINOIS
DEPARTMENT OF TRANSPORTATION

MAINTENANCE OF TRAFFIC - STAGE 3	
SCALE: 1" = 20'	SHEET NO. 4 OF 9 SHEETS
STA. 115+00	TO STA. 127+00

F.A.U. RTE.	SECTION	COUNTY	TOTAL SHEETS	SHEET NO.
2791	12-00106-00-PV	COOK	125	39
CONTRACT NO. 61D77				
FED. ROAD DIST. NO. 1 ILLINOIS FED. AID PROJECT				

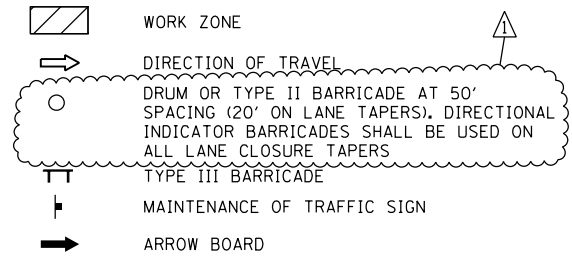


TO BE REMOVED OR LOWERED
WHEN WORKERS ARE NOT PRESENT
FOR MORE THAN ONE HOUR

ADJUST SIGNS AS NECESSARY TO AVOID ENTRANCES

MATCHLINE STA 127+00
SEE SHEET 43

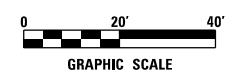
MAINTENANCE OF TRAFFIC LEGEND



NOTES

THE CONTRACTOR SHALL PROVIDE ACCESS TO ENTRANCES FOR LOCAL TRAFFIC IN ACCORDANCE WITH THE AGGREGATE SURFACE COURSE FOR TEMPORARY ACCESS (D1) SPECIAL PROVISION.

SEE STAGING NOTES FOR MORE DETAIL



DATE PLOTTED = 2/21/2024 11:21:19 AM
 PEN TABLE = \$PENTRBL\$
 PLOT CONFIG = \$PLOTORVL\$
 FILE NAME = N:\PROJECTS\2023\02\20230221\02230221.MXD



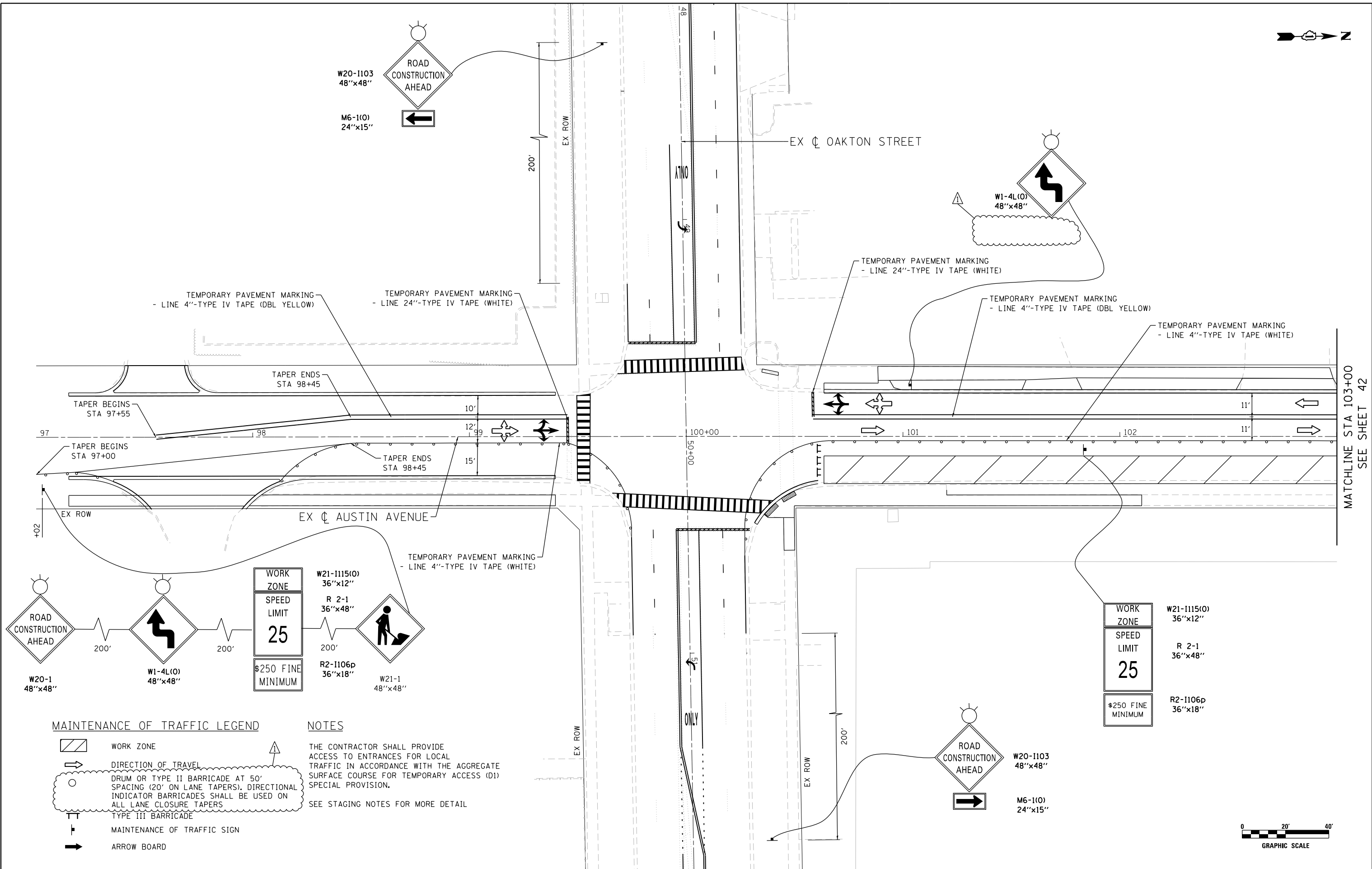
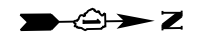
USER NAME = Roadway	DESIGNED - EPS	REVISED - 02/21/2024
PLOT SCALE = 40.0000' / 1" =	DRAWN - AMH	REVISED -
PLOT DATE = 2/21/2024	CHECKED - DJO	REVISED -
	DATE - DEC 2023	REVISED -

**STATE OF ILLINOIS
DEPARTMENT OF TRANSPORTATION**

MAINTENANCE OF TRAFFIC - STAGE 3

SCALE: 1" = 20' SHEET NO. 5 OF 9 SHEETS STA. 127+00 TO STA. 132+91

F.A.U. RTE.	SECTION	COUNTY	TOTAL SHEETS	SHEET NO.
2791	12-00106-00-PV	COOK	125	40
CONTRACT NO. 61D77				
FED. ROAD DIST. NO. 1 ILLINOIS FED. AID PROJECT				



MATCHLINE STA 103+00
SEE SHEET 42

W20-1 48"x48"
W1-4L(O) 48"x48"
W21-1115(O) 36"x12"
R 2-1 36"x48"
R2-1106p 36"x18"
W21-1 48"x48"
W20-1103 48"x48"
M6-1(O) 24"x15"
\$250 FINE MINIMUM

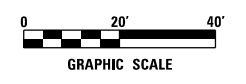
WORK ZONE
SPEED LIMIT
25
\$250 FINE MINIMUM

MAINTENANCE OF TRAFFIC LEGEND

- WORK ZONE
- DIRECTION OF TRAVEL
- DRUM OR TYPE II BARRICADE AT 50' SPACING (20' ON LANE TAPERS). DIRECTIONAL INDICATOR BARRICADES SHALL BE USED ON ALL LANE CLOSURE TAPERS
- TYPE III BARRICADE
- MAINTENANCE OF TRAFFIC SIGN
- ARROW BOARD

NOTES

THE CONTRACTOR SHALL PROVIDE ACCESS TO ENTRANCES FOR LOCAL TRAFFIC IN ACCORDANCE WITH THE AGGREGATE SURFACE COURSE FOR TEMPORARY ACCESS (D1) SPECIAL PROVISION.
 SEE STAGING NOTES FOR MORE DETAIL



DATE PLOTTED = 2/21/2024 11:21:20 AM
 PEN TABLE = \$PRINTPLT\$
 PLOT CONFIG = \$PLOTDRVL\$
 FILE NAME = N:\PROJECTS\2024\02\2791\12-00106-00-01\Drawings\MT\022791-00-01-05.mxd



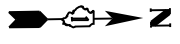
USER NAME = Roadway	DESIGNED - EPS	REVISED - 02/21/2024
PLOT SCALE = 40.0000' / 1"	DRAWN - AMH	REVISED -
PLOT DATE = 2/21/2024	CHECKED - DJO	REVISED -
	DATE - DEC 2023	REVISED -

STATE OF ILLINOIS
DEPARTMENT OF TRANSPORTATION

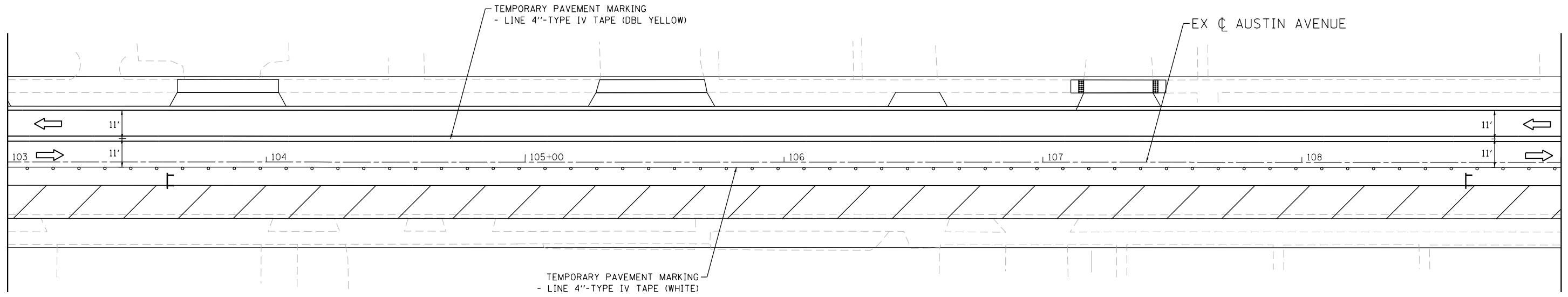
MAINTENANCE OF TRAFFIC - STAGE 4

SCALE: 1" = 20' SHEET NO. 6 OF 9 SHEETS STA. 97+00 TO STA. 103+00

F.A.U. RTE.	SECTION	COUNTY	TOTAL SHEETS	SHEET NO.
2791	12-00106-00-PV	COOK	125	41
CONTRACT NO. 61D77				
FED. ROAD DIST. NO. 1 ILLINOIS FED. AID PROJECT				



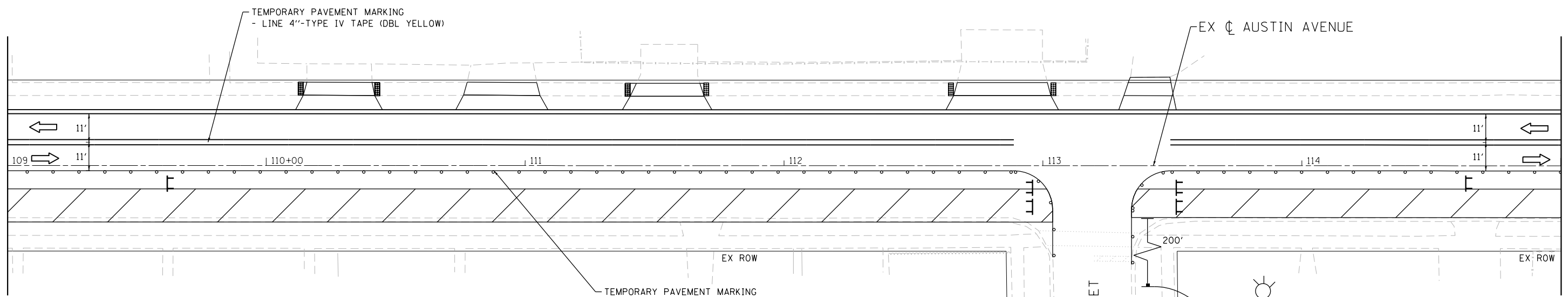
MATCHLINE STA 103+00
SEE SHEET 41



MATCHLINE STA 109+00



MATCHLINE STA 109+00



MATCHLINE STA 115+00
SEE SHEET 43

MAINTENANCE OF TRAFFIC LEGEND

- WORK ZONE
- DIRECTION OF TRAVEL
- DRUM OR TYPE II BARRICADE AT 50' SPACING (20' ON LANE TAPERS), DIRECTIONAL INDICATOR BARRICADES SHALL BE USED ON ALL LANE CLOSURE TAPERS
- TYPE III BARRICADE
- MAINTENANCE OF TRAFFIC SIGN
- ARROW BOARD

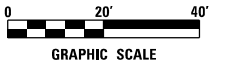
NOTES

THE CONTRACTOR SHALL PROVIDE ACCESS TO ENTRANCES FOR LOCAL TRAFFIC IN ACCORDANCE WITH THE AGGREGATE SURFACE COURSE FOR TEMPORARY ACCESS (D1) SPECIAL PROVISION.

SEE STAGING NOTES FOR MORE DETAIL

TEMPORARY PAVEMENT MARKING
- LINE 4"-TYPE IV TAPE (WHITE)

CLEVELAND STREET



DATE PLOTTED = 2/21/2024 11:21:20 AM
 PEN TABLE = \$PENTBL\$
 PLOT CONFIG = \$PLOTCONFIG\$
 FILE NAME = N:\PROJECTS\2024\02\27\022702\022702.dwg



USER NAME = Roadway	DESIGNED - EPS	REVISED - 02/21/2024
PLOT SCALE = 40.0000' / 1" =	DRAWN - AMH	REVISED -
PLOT DATE = 2/21/2024	CHECKED - DJO	REVISED -
	DATE - DEC 2023	REVISED -

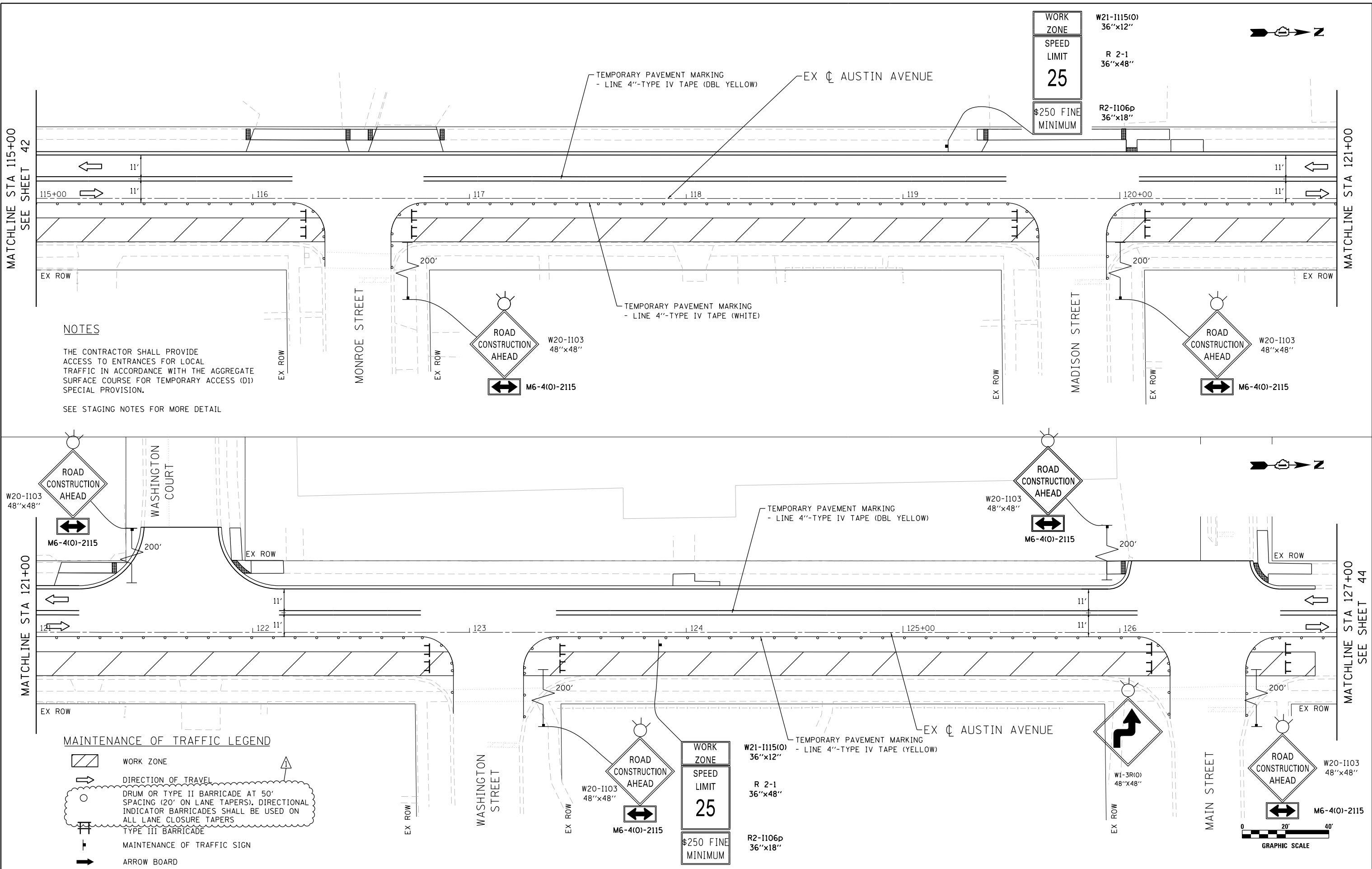
**STATE OF ILLINOIS
DEPARTMENT OF TRANSPORTATION**

MAINTENANCE OF TRAFFIC - STAGE 4

SCALE: 1" = 20' SHEET NO. 7 OF 9 SHEETS STA. 103+00 TO STA. 115+00

F.A.U. RTE.	SECTION	COUNTY	TOTAL SHEETS	SHEET NO.
2791	12-00106-00-PV	COOK	125	42
CONTRACT NO. 61D77				
FED. ROAD DIST. NO. 1 ILLINOIS FED. AID PROJECT				

DATE PLOTTED = 2/21/2024 11:21:21 AM
 PEN TABLE = \$PENTBL\$
 PLOT CONFIG = \$PLOT\$
 FILE NAME = N:\PROJECTS\2024\02\21\2024\022121.dgn

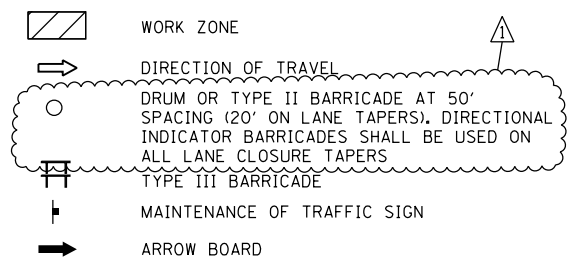


NOTES

THE CONTRACTOR SHALL PROVIDE ACCESS TO ENTRANCES FOR LOCAL TRAFFIC IN ACCORDANCE WITH THE AGGREGATE SURFACE COURSE FOR TEMPORARY ACCESS (D1) SPECIAL PROVISION.

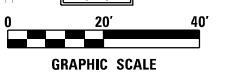
SEE STAGING NOTES FOR MORE DETAIL

MAINTENANCE OF TRAFFIC LEGEND



WORK ZONE	W21-1115(O) 36"x12"
SPEED LIMIT	R 2-1 36"x48"
25	
\$250 FINE MINIMUM	R2-1106p 36"x18"

WORK ZONE	W21-1115(O) 36"x12"
SPEED LIMIT	R 2-1 36"x48"
25	
\$250 FINE MINIMUM	R2-1106p 36"x18"



USER NAME = Roadway	DESIGNED - EPS	REVISED - 02/21/2024
PLOT SCALE = 40.0000' / 1"	DRAWN - AMH	REVISED -
PLOT DATE = 2/21/2024	CHECKED - DJO	REVISED -
	DATE - DEC 2023	REVISED -

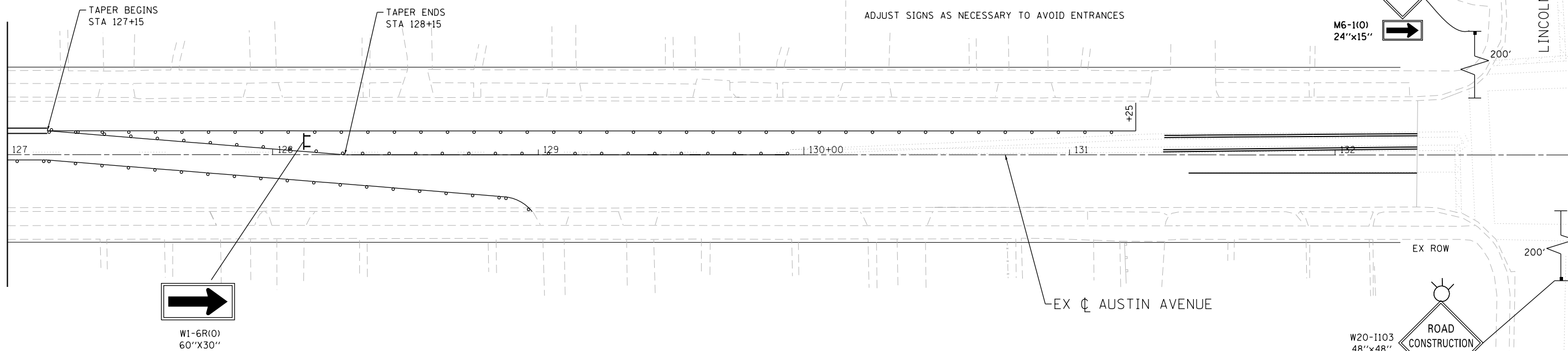
**STATE OF ILLINOIS
DEPARTMENT OF TRANSPORTATION**

MAINTENANCE OF TRAFFIC - STAGE 4

SCALE: 1" = 20' SHEET NO. 8 OF 9 SHEETS STA. 115+00 TO STA. 127+00

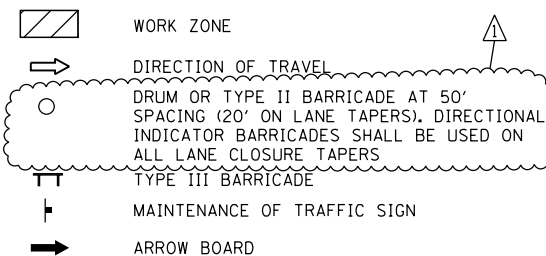
F.A.U. RTE.	SECTION	COUNTY	TOTAL SHEETS	SHEET NO.
2791	12-00106-00-PV	COOK	125	43
CONTRACT NO. 61D77				
FED. ROAD DIST. NO. 1 ILLINOIS FED. AID PROJECT				

MATCHLINE STA 127+00
SEE SHEET 43



ADJUST SIGNS AS NECESSARY TO AVOID ENTRANCES

MAINTENANCE OF TRAFFIC LEGEND



NOTES

THE CONTRACTOR SHALL PROVIDE ACCESS TO ENTRANCES FOR LOCAL TRAFFIC IN ACCORDANCE WITH THE AGGREGATE SURFACE COURSE FOR TEMPORARY ACCESS (D1) SPECIAL PROVISION.
SEE STAGING NOTES FOR MORE DETAIL



DATE PLOTTED = 2/21/2024 11:21:21 AM
PEN TABLE = \$CENTRALS
\$PLTDRVL\$
FILE NAME = N:\PROJECTS\2024\02\2791\12-00106-00-01\Drawings\MOI\022791-00-01-01-01.dgn



USER NAME = Roadway	DESIGNED - EPS	REVISED - 02/21/2024
PLOT SCALE = 40.0000' / 1" =	DRAWN - AMH	REVISED -
PLOT DATE = 2/21/2024	CHECKED - DJO	REVISED -
	DATE - DEC 2023	REVISED -

**STATE OF ILLINOIS
DEPARTMENT OF TRANSPORTATION**

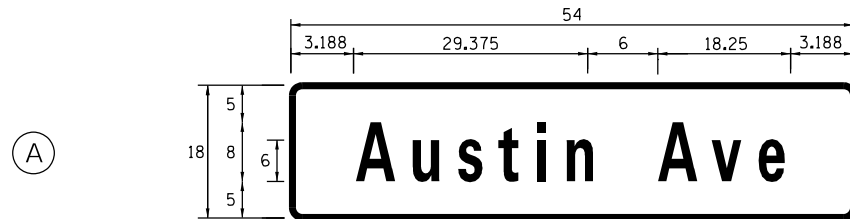
MAINTENANCE OF TRAFFIC - STAGE 4

SCALE: 1" = 20' SHEET NO. 9 OF 9 SHEETS STA. 127+00 TO STA. 132+91

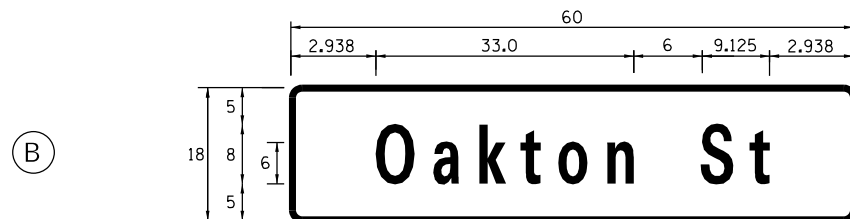
F.A.U. RTE.	SECTION	COUNTY	TOTAL SHEETS	SHEET NO.
2791	12-00106-00-PV	COOK	125	44
FED. ROAD DIST. NO. 1 ILLINOIS FED. AID PROJECT			CONTRACT NO. 61D77	

SCHEDULE OF QUANTITIES

SIGN PANEL – TYPE 1 OR TYPE 2



DESIGN SERIES	AREA (SQ FT)	SIGN PANEL TYPE	SHEETING TYPE	QTY. REQUIRED
D	6.75	1	ZZ	2



DESIGN SERIES	AREA (SQ FT)	SIGN PANEL TYPE	SHEETING TYPE	QTY. REQUIRED
D	7.5	1	ZZ	2

NOTE:
FOR ADDITIONAL DESIGN AND INSTALLATION INFORMATION,
SEE DISTRICT ONE MAST ARM MOUNTED STREET NAME SIGNS DETAIL.

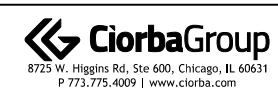
ITEM DESCRIPTION	UNITS	TOTAL QTY
SIGN PANEL - TYPE 1	SQ FT	29
UNDERGROUND CONDUIT, GALVANIZED STEEL, 2" DIA.	FOOT	744
UNDERGROUND CONDUIT, GALVANIZED STEEL, 3" DIA.	FOOT	124
UNDERGROUND CONDUIT, GALVANIZED STEEL, 4" DIA.	FOOT	350
HANDHOLE	EACH	4
HEAVY-DUTY HANDHOLE	EACH	2
DOUBLE HANDHOLE	EACH	2
ELECTRIC CABLE IN CONDUIT, SIGNAL NO. 14 2C	FOOT	1,114
ELECTRIC CABLE IN CONDUIT, SIGNAL NO. 14 3C	FOOT	1,454
ELECTRIC CABLE IN CONDUIT, SIGNAL NO. 14 5C	FOOT	1,727
ELECTRIC CABLE IN CONDUIT, SIGNAL NO. 14 7C	FOOT	1,332
ELECTRIC CABLE IN CONDUIT, LEAD-IN, NO. 14 1 PAIR	FOOT	1,700
ELECTRIC CABLE IN CONDUIT, SERVICE, NO. 6 2 C	FOOT	157
ELECTRIC CABLE IN CONDUIT, EQUIPMENT GROUNDING CONDUCTOR, NO. 6 1C	FOOT	695
TRAFFIC SIGNAL POST, GALVANIZED STEEL 16 FT.	EACH	3
STEEL MAST ARM ASSEMBLY AND POLE, 26 FT.	EACH	1
STEEL MAST ARM ASSEMBLY AND POLE, 32 FT.	EACH	1
STEEL MAST ARM ASSEMBLY AND POLE, 40 FT.	EACH	1
STEEL MAST ARM ASSEMBLY AND POLE, 50 FT.	EACH	1
CONCRETE FOUNDATION, TYPE A	FOOT	16
CONCRETE FOUNDATION, TYPE C	FOOT	4
CONCRETE FOUNDATION, TYPE E 30-INCH DIAMETER	FOOT	24
CONCRETE FOUNDATION, TYPE E 36-INCH DIAMETER	FOOT	28
SIGNAL HEAD, LED, 1-FACE, 3-SECTION, MAST-ARM MOUNTED	EACH	6
SIGNAL HEAD, LED, 1-FACE, 5-SECTION, BRACKET MOUNTED	EACH	4
SIGNAL HEAD, LED, 1-FACE, 5-SECTION, MAST-ARM MOUNTED	EACH	4
SIGNAL HEAD, LED, 3-FACE, 3-SECTION, BRACKET MOUNTED	EACH	4
PEDESTRIAN SIGNAL HEAD, LED, 1-FACE, BRACKET MOUNTED WITH COUNTDOWN TIMER	EACH	8
TRAFFIC SIGNAL BACKPLATE, LOUVERED, FORMED PLASTIC	EACH	10
INDUCTIVE LOOP DETECTOR	EACH	6
DETECTOR LOOP, TYPE I	FOOT	366
TEMPORARY TRAFFIC SIGNAL INSTALLATION	EACH	1
* RELOCATE EXISTING EMERGENCY VEHICLE PRIORITY SYSTEM, DETECTOR UNIT	EACH	2
* RELOCATE EXISTING EMERGENCY VEHICLE PRIORITY SYSTEM, PHASING UNIT	EACH	1
REMOVE EXISTING TRAFFIC SIGNAL EQUIPMENT	EACH	1
REMOVE EXISTING HANDHOLE	EACH	8
REMOVE EXISTING DOUBLE HANDHOLE	EACH	2
REMOVE EXISTING CONCRETE FOUNDATION	EACH	9
TEMPORARY TRAFFIC SIGNAL TIMING	EACH	1
WOODEN POLE REMOVAL	EACH	1
* EMERGENCY VEHICLE PRIORITY SYSTEM LINE SENSOR CABLE, NO. 20 3/C	FOOT	310
FULL-ACTUATED CONTROLLER AND TYPE SUPER P CABINET (SPECIAL)	EACH	1
SERVICE INSTALLATION, GROUND MOUNTED, METERED	EACH	1
PEDESTRIAN SIGNAL POST, 10 FT.	EACH	3
PEDESTRIAN SIGNAL POST, 5 FT.	EACH	1
VIDEO VEHICLE DETECTION SYSTEM, SINGLE APPROACH	EACH	2
UNINTERRUPTABLE POWER SUPPLY (SPECIAL)	EACH	1
ACCESSIBLE PEDESTRIAN SIGNALS	EACH	8
CONCRETE FOUNDATION, TYPE A 12-INCH DIAMETER	FOOT	16
LED SIGNAL FACE, LENS COVER	EACH	18
ELECTRIC METER	EACH	1

1

* 100% COST TO THE VILLAGE OF MORTON GROVE

**TS 14325
EAGLE 80**

DATE PLOTTED = 2/16/2024 10:09:30 AM
PEN TABLE = \$RENTALS\$
\$PLTDRVL\$
FILE NAME = N:\PROJ\00224568\00_00224568.dwg
C:\Users\jg\OneDrive\Signal\Sign\00224568.dwg



USER NAME = Electrical	DESIGNED - JMV	REVISED - 2/21/2024
	DRAWN - JMV	REVISED -
PLOT SCALE = 2.0001" / in.	CHECKED - JMV	REVISED -
PLOT DATE = 2/16/2024	DATE - DEC 2023	REVISED -

**STATE OF ILLINOIS
DEPARTMENT OF TRANSPORTATION**

**SCHEDULE OF QUANTITIES
OAKTON STREET AT AUSTIN AVENUE**

SCALE: NONE SHEET NO. 1 OF 1 SHEETS STA. TO STA.

F.A.U. RTE.	SECTION	COUNTY	TOTAL SHEETS	SHEET NO.
2791	12-00106-00-PV	COOK	125	78
FED. ROAD DIST. NO. 1 ILLINOIS FED. AID PROJECT			CONTRACT NO. 61D77	