

Illinois Department of Transportation

Office of Intermodal Project Implementation / Division of Aeronautics
1 Langhorne Bond Drive / Springfield, Illinois 62707-8415

February 23, 2024

SUBJECT: Central Illinois Regional Airport
Bloomington, Illinois
McLean County
Illinois Project Number: BMI-4776
AIP Project Number: N/A
Contract No. BL072
Item No. 04A, March 8, 2024 Letting
Addendum A

NOTICE TO PROSPECTIVE BIDDERS

Attached is an addendum to the plans or proposal. This addendum involves revised and/or added material.

Reason for Addendum:

Revisions to the Plans, Specifications, and Schedule of Prices.

To All Plan Holders:

The following changes to the bid documents dated January 12, 2024, are included in Addendum A:

1. Add Pay Item AR401630, Bituminous Surface Test Section
2. Add Pay Item AS401630, Bituminous Surface Test Section
3. Revised Staging and Storage Location.
4. Revised Section 401-4.15 of Special Provisions
5. Revised Section 401-6.1 of Special Provisions

Plan Changes:

- Sheet GI002
 - ADD: Pay Item AR401630, Bituminous Surface Test Section
 - ADD: Pay Item AS401630, Bituminous Surface Test Section
- Sheet GI101
 - REVISE: Location of Contractor's Parking, Staging, and Storage.
- Sheet GC101
 - REVISE: Location of Proposed Staging and Storage Area.
 - REVISE: Critical Point Table – Staging and Storage.

Special Provision Changes:

- Section 401-4.15, Acceptance Testing of HMA Mixes for Density
 - REMOVE THE FOLLOWING FROM THE SPECIAL PROVISIONS: *"DELETE: All references to Method I for quantities under 2,500 tons."*

- Section 401-6.1, Basis of Payment
 - ADD: Item AR401630 – Bituminous Surface Test Section – per each.
 - ADD: Item AS401630 – Bituminous Surface Test Section – per each.

Schedule of Prices Changes:

- Base Bid
 - ADD: Pay Item AR401630, Bituminous Surface Test Section, Qty: 1 EACH
- Additive Alternate 1
 - ADD: Pay Item AS401630, Bituminous Surface Test Section, Qty: 1 EACH

Prime contractors must utilize the enclosed material when preparing their bid and must include any changes to the Schedule of Prices in their bid.

Questions on this addendum may be directed to Dillon Ruholl of CMT at 217-572-1069 or by email druholl@cmtengr.com.

Attachments

- Revised Plan Sheet GI002
- Revised Plan Sheet GI101
- Revised Plan Sheet GC101
- Revised Specification Section Item 401 – Bituminous Surface Course



License No. 184-000613

CONSULTANTS

THIS BAR IS EQUAL TO 2" AT FULL SCALE (34X22).

100%
01/12/2024

REHABILITATE AIRPORT
ENTRANCE ROAD AND
ASSOCIATED IMPROVEMENTS

OWNER



BLOOMINGTON-NORMAL
AIRPORT AUTHORITY
CENTRAL ILLINOIS REGIONAL
AIRPORT
BLOOMINGTON, ILLINOIS

2/20/24 ADDENDUM A

MARK DATE DESCRIPTION

IL PROJ. NO. BMI-4776
CMT PROJECT NO: 190920-06
CAD DWG FILE: 19092006-GI002.DWG
DESIGNED BY: DJR
DRAWN BY: DPA
CHECKED BY: MJD
APPROVED BY: CBG
COPYRIGHT:

SHEET TITLE
INDEX TO SHEETS &
SUMMARY OF
QUANTITIES

G1002
SHEET 2 OF 57

SHEET LIST TABLE

Sheet No.	Sheet Index	Sheet Title
1	GI001	COVER SHEET
2	GI002	INDEX TO SHEETS & SUMMARY OF QUANTITIES
3	GI101	AIRPORT SITE PLAN
4	GC001	CONSTRUCTION ACTIVITY NOTES 1
5	GC002	CONSTRUCTION ACTIVITY NOTES 2
6	GC003	CONSTRUCTION ACTIVITY DETAILS
7	GC004	CONSTRUCTION ACTIVITY DETAILS
8	GC101	CONSTRUCTION ACTIVITY PLAN
9	GC102	CONSTRUCTION ACTIVITY PHASING PLAN - 1
10	GC103	CONSTRUCTION ACTIVITY PHASING PLAN - 2
11	GC104	CONSTRUCTION ACTIVITY PHASING PLAN - 3
12	GC105	CONSTRUCTION ACTIVITY PHASING PLAN - 4
13	CD000	EXISTING CONDITIONS LEGEND
14	CD101	EXISTING CONDITIONS & REMOVAL PLAN
15	CD102	EXISTING CONDITIONS & REMOVALS 1
16	CD103	EXISTING CONDITIONS & REMOVALS 2
17	CD104	EXISTING CONDITIONS & REMOVALS 3
18	CD105	EXISTING CONDITIONS & REMOVALS 4
19	CD106	EXISTING CONDITIONS & REMOVALS 5
20	CD107	EXISTING CONDITIONS & REMOVALS 6
21	CD301	EXISTING TYPICAL SECTIONS AND DETAIL
22	CP101	PROPOSED IMPROVEMENTS PLAN
23	CP102	PROPOSED IMPROVEMENTS 1
24	CP103	PROPOSED IMPROVEMENTS 2
25	CP104	PROPOSED IMPROVEMENTS 3
26	CP105	PROPOSED IMPROVEMENTS 4
27	CP106	PROPOSED IMPROVEMENTS 5
28	CP107	PROPOSED IMPROVEMENTS 6
29	CP108	PROPOSED IMPROVEMENTS 7
30	CP109	PROPOSED IMPROVEMENTS 8
31	CP110	PROPOSED IMPROVEMENTS 9
32	CP111	PROPOSED IMPROVEMENTS 10
33	CP112	PROPOSED IMPROVEMENTS 11
34	CP113	PROPOSED IMPROVEMENTS 12
35	CP301	PROPOSED TYPICAL SECTIONS
36	CP302	PROPOSED TYPICAL SECTIONS
37	CP303	PROPOSED TYPICAL SECTIONS
38	CP501	REMOVE AND REPLACE PANEL DETAILS
39	CP502	PARTIAL DEPTH PANEL REPAIR DETAILS
40	CP503	CONCRETE JOINT REPAIRS
41	CJ501	JOINTING DETAILS
42	CL101	EROSION CONTROL PLAN
43	EL101	PROPOSED LIGHTING OVERALL PLANS
44	EL102	PROPOSED LIGHTING PLAN 1
45	EL103	PROPOSED LIGHTING PLAN 2
46	EL104	PROPOSED LIGHTING PLAN 3
47	EL105	PROPOSED LIGHTING PLAN 4
48	EL106	PROPOSED LIGHTING PLAN 5
49	EL107	PROPOSED LIGHTING PLAN 6
50	EL501	ELECTRICAL DETAILS 1
51	EL502	ELECTRICAL DETAILS 2
52	EL503	ELECTRICAL DETAILS 3
53	EL504	ELECTRICAL DETAILS 4
54	EL505	ELECTRICAL DETAILS 5
55	CM101	MARKING PLAN 1
56	CM102	MARKING PLAN 2
57	CM103	MARKING PLAN 3

SUMMARY OF QUANTITIES - BASE BID

ITEM NO.	ITEM DESCRIPTION	UNITS	QUANTITY
AR106511	TYPE A AREA LIGHT POLE W/1 FIXTURE	EACH	46
AR106512	TYPE A AREA LIGHT POLE W/2 FIXTURES	EACH	1
AR106524	TYPE B AREA LIGHT POLE W/4 FIXTURES	EACH	4
AR106905	REMOVE LIGHT POLE & FIXTURE	EACH	51
AR108602	3/C #2 600 V UG CABLE	FOOT	8,000
AR108606	3/C #6 600 V UG CABLE	FOOT	11,000
AR108758	1/C #8 GROUND	FOOT	19,000
AR108960	REMOVE CABLE	FOOT	21,000
AR109520	CONDUIT	FOOT	1,020
AR110013	3" DIRECTIONAL BORE	FOOT	200
AR110102	DUCT MARKER IN PAVEMENT	EACH	16
AR110900	REMOVE DUCT	FOOT	1,020
AR150510	ENGINEER'S FIELD OFFICE	L SUM	1
AR150520	MOBILIZATION	L SUM	1
AR150530	TRAFFIC MAINTENANCE	L SUM	1
AR152480	SHOULDER ADJUSTMENT	SQ YD	7,350
AR156520	INLET PROTECTION	EACH	5
AR209612	CRUSHED AGG. BASE COURSE - 12"	SQ YD	260
AR401630	BITUMINOUS SURFACE TEST SECTION	EACH	1
AR401655	BUTT JOINT CONSTRUCTOIN	SQ YD	900
AR401663	LONGITUDINAL JOINT SEALANT	FOOT	12,000
AR501115	CRACK & SEAT PAVEMENT	SQ YD	25,400
AR501540	PCC PAVEMENT GROOVING	SQ YD	6
AR501550	PCC PAVEMENT MILLING	SQ YD	50
AR501910	REMOVE AND REPLACE PCC PAVEMENT	SQ YD	750
AR603510	BITUMINOUS TACK COAT	GALLON	5,215
AR605540	CLEAN & SEAL JOINTS	FOOT	17,500
AR605542	CLEAN & SEAL EXPANSION JOINTS	FOOT	300
AR620520	PAVEMENT MARKING - WATERBORNE	SQ FT	12,000
AR620900	PAVEMENT MARKING REMOVAL	SQ FT	1,200
AR705944	ADJUST UNDERDRAIN CLEANOUT	EACH	14
AR754410	COMB CONCRETE CURB & GUTTER	FOOT	300
AR754904	REMOVE COMB CURB & GUTTER	FOOT	300
AR800226	BITUMINOUS SURFACE - IDOT IL 9.5	TON	3,500
AR801508	ELECTRICAL MODIFICATIONS	L SUM	1
AR801509	PARTIAL DEPTH PCC PANEL REPAIR	SQ YD	200
AR801510	BITUMINOUS SURFACE - IDOT IL 9.5 MODIFIED BINDER	TON	2,400
AR901510	SEEDING	ACRE	1.6
AR908510	MULCHING	ACRE	1.6

SUMMARY OF QUANTITIES - ADDITIVE ALTERNATE #1

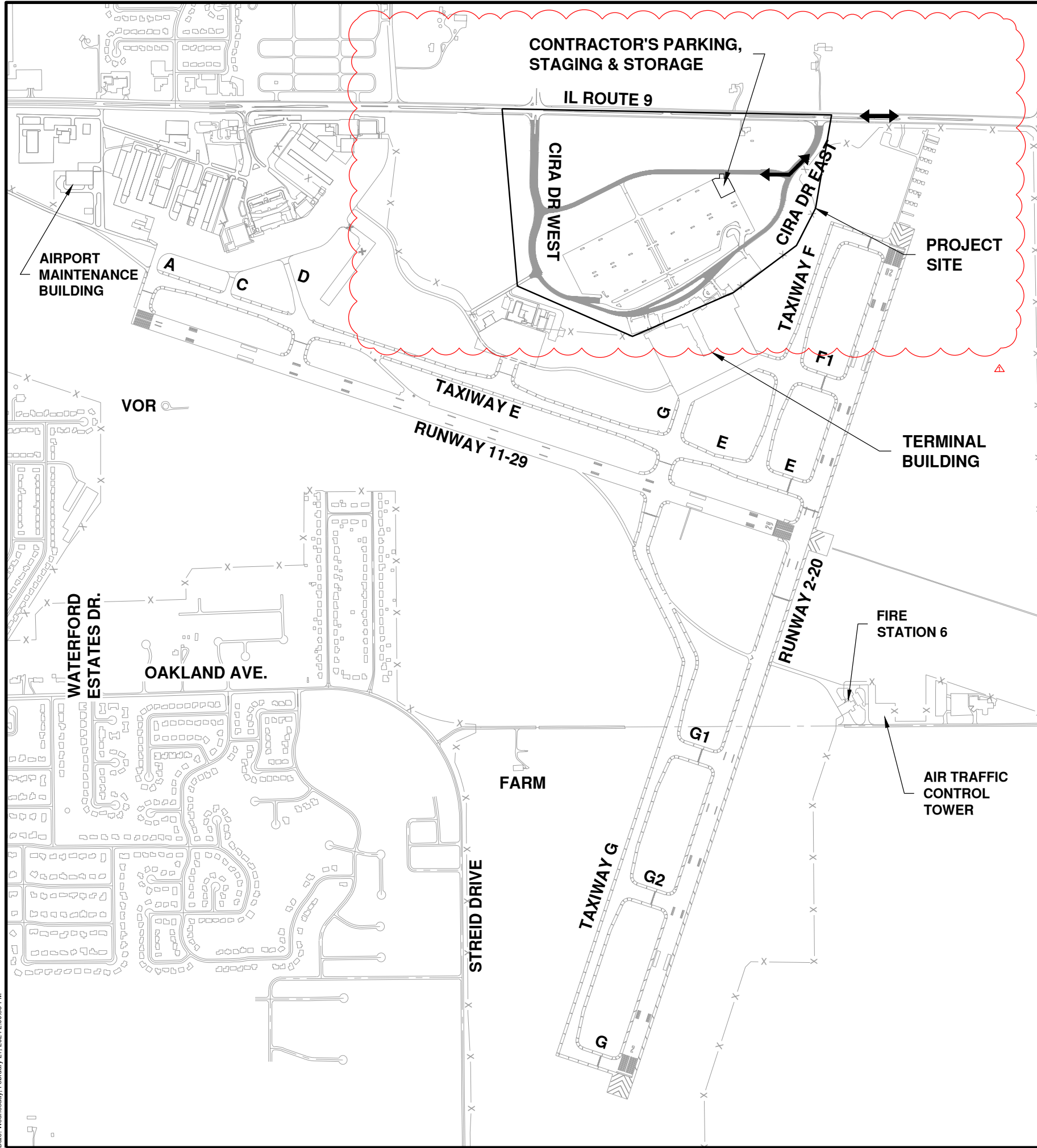
ITEM NO.	ITEM DESCRIPTION	UNITS	QUANTITY
AS401630	BITUMINOUS SURFACE TEST SECTION	EACH	1
AS401650	BITUMINOUS PAVEMENT MILLING	SQ YD	4,850
AS603510	BITUMINOUS TACK COAT	GALLON	1,000
AS800226	BITUMINOUS SURFACE - IDOT IL 9.5	TON	710
AS801510	BITUMINOUS SURFACE - IDOT IL 9.5 MODIFIED BINDER	TON	690

SUMMARY OF QUANTITIES - ADDITIVE ALTERNATE #2




ITEM NO.	ITEM DESCRIPTION	UNITS	QUANTITY
AT152451	SHOULDER ENBANKMENT	CU YD	950
AT401900	REMOVE BITUMINOUS PAVEMENT	SQ YD	4,850

SUMMARY OF QUANTITIES - ADDITIVE ALTERNATE #3

ITEM NO.	ITEM DESCRIPTION	UNITS	QUANTITY
AU801506	ASPHALT REINFORCEMENT FIBERS	POUND	7,300



LEGEND

-  WORK AREA (SEE NOTES)
-  PROPOSED PAVEMENT IMPROVEMENTS
-  CONTRACTOR ACCESS ROUTE

NOTES

1. EQUIPMENT HEIGHTS **GREATER THAN 25'** SHALL NOT BE USED WITHOUT COORDINATION WITH THE RESIDENT ENGINEER AND AIRPORT OPERATIONS.
2. CONTRACTOR SHALL ACCESS SITE THROUGH CIRA DRIVE EAST.
3. CONTRACTOR SHALL INSTALL TEMPORARY ACCESS TO PARKING, STAGING, AND STORAGE AREA, AND RESTORE AREA IN KIND AT THE END OF THE PROJECT. ALL WORK SHALL BE CONSIDERED INCIDENTAL TO MOBILIZATION.

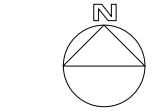
RADIO FREQUENCY

GROUND CONTROL FREQUENCY - 121.65
 AIR CONTROL FREQUENCY - 124.60



License No. 184-000613

CONSULTANTS



THIS BAR IS EQUAL TO 2" AT FULL SCALE (34X22).

100%
01/12/2024

REHABILITATE AIRPORT
ENTRANCE ROAD AND
ASSOCIATED IMPROVEMENTS

OWNER



BLOOMINGTON-NORMAL
AIRPORT AUTHORITY
CENTRAL ILLINOIS REGIONAL
AIRPORT
BLOOMINGTON, ILLINOIS

 2/20/24 ADDENDUM A

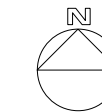
MARK	DATE	DESCRIPTION

IL PROJ. NO. BMI-4776
CMT PROJECT NO: 190920-06
CAD DWG FILE: 19092006-GI100.DWG
DESIGNED BY: CBG
DRAWN BY: DPA
CHECKED BY: MJD
APPROVED BY: CBG
COPYRIGHT:

SHEET TITLE
AIRPORT SITE PLAN

GI101
SHEET 3 OF 57

Path: K:\Bloomington\19092006-06_RehabEntranceRoad\Draw\Sheets\19092006-GI100.dwg
 Date: Wednesday, February 21, 2024 2:00:35 PM



THIS BAR IS EQUAL TO 2" AT FULL SCALE (34X22).

 100%
01/12/2024

REHABILITATE AIRPORT ENTRANCE ROAD AND ASSOCIATED IMPROVEMENTS

OWNER


**BLOOMINGTON-NORMAL
AIRPORT AUTHORITY
CENTRAL ILLINOIS REGIONAL
AIRPORT
BLOOMINGTON, ILLINOIS**

2/20/24 ADDENDUM A

MARK | DATE | DESCRIPTION

IL PROJ. NO. BMI-4776

CMT PROJECT NO: 190920-06

CAD DWG FILE: 19092006-GC100.DWG

DESIGNED BY: DJR

DRAWN BY: DPA

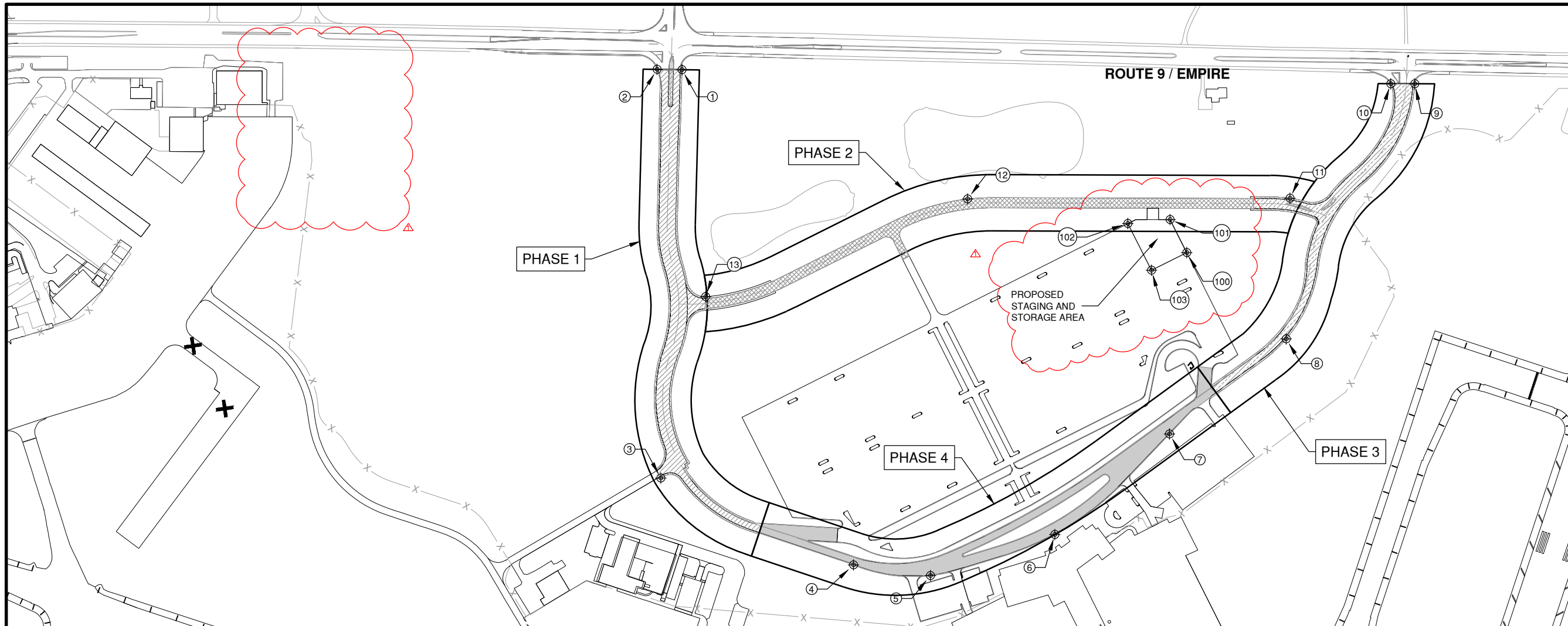
CHECKED BY: MJD

APPROVED BY: CBG

COPYRIGHT:

SHEET TITLE

**CONSTRUCTION
ACTIVITY PLAN**

 GC101
SHEET 8 OF 57

CRITICAL POINT TABLE - STAGING AND STORAGE

POINT	DESCRIPTION	LATITUDE	LONGITUDE	ELEVATION	EQUIPMENT HEIGHT
102	STAGING AND STORAGE	N40° 29' 11.73"	W88° 54' 47.93"	842.00	25'
101	STAGING AND STORAGE	N40° 29' 11.88"	W88° 54' 45.99"	845.00	25'
100	STAGING AND STORAGE	N40° 29' 10.72"	W88° 54' 45.22"	848.00	25'
103	STAGING AND STORAGE	N40° 29' 10.09"	W88° 54' 46.83"	844.00	25'

CRITICAL POINT TABLE - WORK AREA

POINT	DESCRIPTION	LATITUDE	LONGITUDE	ELEVATION	EQUIPMENT HEIGHT
1	WORK SITE AREA	N40° 29' 17.03"	W88° 55' 08.48"	843.00	60'
2	WORK SITE AREA	N40° 29' 17.03"	W88° 55' 09.62"	844.00	60'
3	WORK SITE AREA	N40° 29' 02.68"	W88° 55' 09.33"	860.00	60'
4	WORK SITE AREA	N40° 28' 59.68"	W88° 55' 00.44"	855.00	60'
5	WORK SITE AREA	N40° 28' 59.32"	W88° 54' 56.90"	857.00	60'
6	WORK SITE AREA	N40° 29' 00.79"	W88° 54' 51.20"	858.00	60'
7	WORK SITE AREA	N40° 29' 04.35"	W88° 54' 45.95"	855.00	60'
8	WORK SITE AREA	N40° 29' 07.72"	W88° 54' 40.62"	848.00	60'
9	WORK SITE AREA	N40° 29' 16.70"	W88° 54' 34.78"	848.00	60'
10	WORK SITE AREA	N40° 29' 16.69"	W88° 54' 35.89"	848.00	60'
11	WORK SITE AREA	N40° 29' 12.65"	W88° 54' 40.48"	848.00	60'
12	WORK SITE AREA	N40° 29' 12.55"	W88° 54' 55.31"	838.00	60'
13	WORK SITE AREA	N40° 29' 09.06"	W88° 55' 07.32"	849.00	60'

CONSTRUCTION SEQUENCING NOTES

1. THE CONTRACTOR SHALL CONTINUOUSLY CLEAN ACTIVE PAVEMENTS DURING HAULING OPERATIONS AND AT THE END OF THE WORKDAY.
2. AIRPORT VEHICLES AND TRAVELING PUBLIC SHALL HAVE THE RIGHT OF WAY AT ALL TIMES.
3. THE CONTRACTOR SHALL NOT COMPLETELY CLOSE ANY SECTION OF ROADWAY. UNLESS HE PROPOSES AN ACCEPTABLE PLAN FOR MAINTAINING TRAFFIC TO ALL FACILITIES. PROPOSED PLAN SHALL BE APPROVED BY THE RESIDENT ENGINEER AND AIRPORT.
4. THE CONTRACTOR SHALL COORDINATE ALL CLOSURE TIMES AND DURATIONS WITH AIRPORT OPERATIONS.
5. THE CONTRACTOR SHALL NOT COMPLETELY BLOCK DROP OFF OR PEDESTRIAN ACCESS TO THE TERMINAL BUILDING.
6. THE CONTRACTOR SHALL CONFORM TO ALL LOCAL STATE AND FEDERAL REQUIREMENTS FOR TRAFFIC CONTROL AND LANE CLOSURES.
7. THE CONTRACTOR SHALL COORDINATE WITH LOCAL ROAD AGENCIES TO ENSURE THAT ADEQUATE TRAFFIC CONTROLS ARE IN PLACE FOR IL RT. 9.
8. THE CONTRACTOR SHALL PROVIDE THE FLAGMEN AND SIGNAGE NECESSARY FOR TRAFFIC CONTROL.
9. PRIOR TO REOPENING ROADWAYS TO TRAFFIC, THE CONTRACTOR SHALL ESTABLISH VERTICAL TRANSITIONS BETWEEN PAVEMENTS AS REQUIRED BY IDOT SPECIFICATIONS.
10. LONGITUDINAL JOINT SEALANT (LJS) MAY REQUIRE THE CONTRACTOR TO ADD ADDITIONAL PERSONNEL TO PROVIDE TRAFFIC CONTROL TO PREVENT DAMAGE TO THE LJS.
11. THE CONTRACTOR SHALL LIMIT IMPACTS TO IL RT. 9, AND SHALL HAVE PROPER SIGNAGE ALONG THE ROADWAY IN ACCORDANCE WITH THE MANUAL ON UNIFORM TRAFFIC CONTROL DEVICES.

ITEM 401 – BITUMINOUS SURFACE COURSE
(Central Plant Hot Mix)

This Special Provision references multiple sections of the Illinois Department of Transportation Standard Specifications for Road and Bridge Construction, Adopted January 1, 2022, Division 1000, Section 1030 Hot-Mix Asphalt.

DESCRIPTION

401-1.1 ADD: This item shall consist of providing bituminous surface course overlay and for the new pavement sections.

MATERIALS

DELETE: SECTION 401-2.1 THROUGH SECTION 401-2.5

ADD: Materials used in the Bituminous Surface Course shall conform to the Illinois Department of Transportation Standard Specifications for Road and Bridge Construction, Adopted January 1, 2022, Division 1000, Section 1030 – HOT-MIX ASPHALT, IL-9.5 surface.

The Job Mix Formula shall be an approved Illinois Department of Transportation mix that uses the IDOT approved aggregate and asphalt binder.

COMPOSITION

DELETE: THIS SECTION

ADD: Bituminous Surface Course Mix Composition shall be per the tables below and per the mixture composition table in section 1030.05 of the Illinois Department of Transportation Standard Specifications for Road and Bridge Construction, Adopted January 1, 2022. Bituminous Surface Course shall be placed as shown on the plans.

BITUMINOUS SURFACE MIX 1

MIX COMPOSITION	IL 9.5, High ESAL Surface Course
AC/PG	PG-64-22
MAX RAP %	10%
Ndesign	50
Target % Voids	4.0%
FRICTION AGGREGATE	N/A

BITUMINOUS SURFACE MIX 2

MIX COMPOSITION	IL 9.5, High ESAL Surface Course
AC/PG	SBS PG-70-22
MAX RAP %	10%
Ndesign	50
Target % Voids	4.0%
FRICTION AGGREGATE	N/A

ADD BY REFERENCE: Illinois Department of Transportation Standard Specifications for Road and Bridge Construction, Adopted January 1, 2022, Division 1000, Section 1030.02 – Materials.

ADD BY REFERENCE: Illinois Department of Transportation Standard Specifications for Road and Bridge Construction, Adopted January 1, 2022, Division 1000, Section 1030.05 – Mixture Design.

401-4.10 TRANSPORTING, SPREADING, AND FINISHING

DELETE: The fifth paragraph and replace with:

The contractor shall place the bituminous material by controlling the thickness of the mixture. Stringline will not be required to construct the pavement.

401-4.12 JOINTS

ADD: After the first paragraph of this section.

At any time during the bituminous surface course paving operation it becomes necessary to end a paving lane at a location other than the proposed finished pavement edge because of ending a day's paving, machinery breakdown, etc., the lane end will be sawed back a sufficient distance to provide a smooth, neat appearing joint from which to resume paving. The sawed face will be painted with a liquid asphalt and this work shall be considered incidental to Item 401, Bituminous Surface Course, and no additional compensation will be allowed.

REVISE: The sixth sentence of the fourth paragraph as follows:

“...at a random location as determined by the Resident Engineer...”

401-4.15 ACCEPTANCE TESTING OF HMA MIXES FOR DENSITY

~~DELETE: All references to Method I for quantities under 2,500 tons.~~

ADD TO THE FIRST PARAGRAPH: Acceptance testing shall be in accordance with the Illinois Department of Transportation, Division of Aeronautics, Illinois Standard Specifications for Construction of Airports Adopted April 1, 2012 and any other Policy Memorandums referenced in the Illinois Department of Transportation, Division of Aeronautics, Illinois Standard Specifications for Construction of Airports.

BASIS OF PAYMENT

401-6.1 ADD: To the end of the first paragraph.

Payment will not be made for any HMA surface course in excess of 103 percent of plan quantity as outlined in Section 401-5.1.

DELETE: The second paragraph.

ADD:

Payment will be made under:

Item AR401630 – Bituminous Surface Test Section – per each.

Item AS401630 – Bituminous Surface Test Section – per each.

Item AR800226 – Bituminous Surface – IDOT IL 9.5 – per ton.

Item AS800226 – Bituminous Surface – IDOT IL 9.5 – per ton.

Item AR801510 – Bituminous Surface – IDOT IL 9.5 Modified Binder – per ton.

Item AS801510 – Bituminous Surface – IDOT IL 9.5 Modified Binder – per ton.