

STATE OF ILLINOIS
DEPARTMENT OF TRANSPORTATION

F.A.I. RTE.	SECTION	COUNTY	TOTAL SHEETS	SHEET NO.
80	D3 CRACK SEAL 2018-2	BUREAU	6	1
ILLINOIS		CONTRACT NO. 66H95		

INDEX OF SHEETS

1	COVER SHEET
2	GENERAL NOTES
3	SUMMARY OF QUANTITIES
4	TYPICAL SECTIONS
5	SCHEDULES
6	DETAILS

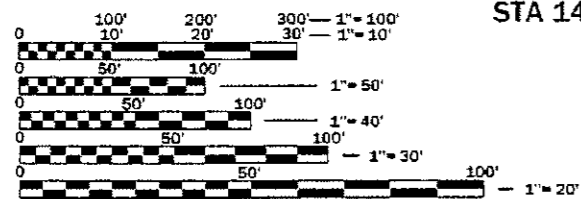
PROPOSED HIGHWAY PLANS

FAI ROUTE 80 (I-80)
SECTION D3 CRACK SEAL 2018-2
PROJECT NHPP-H058(253)
CENTERLINE CRACK & JOINT SEALING
BUREAU COUNTY

C-93-033-18

LIST OF ILLINOIS DOT HIGHWAY STANDARDS

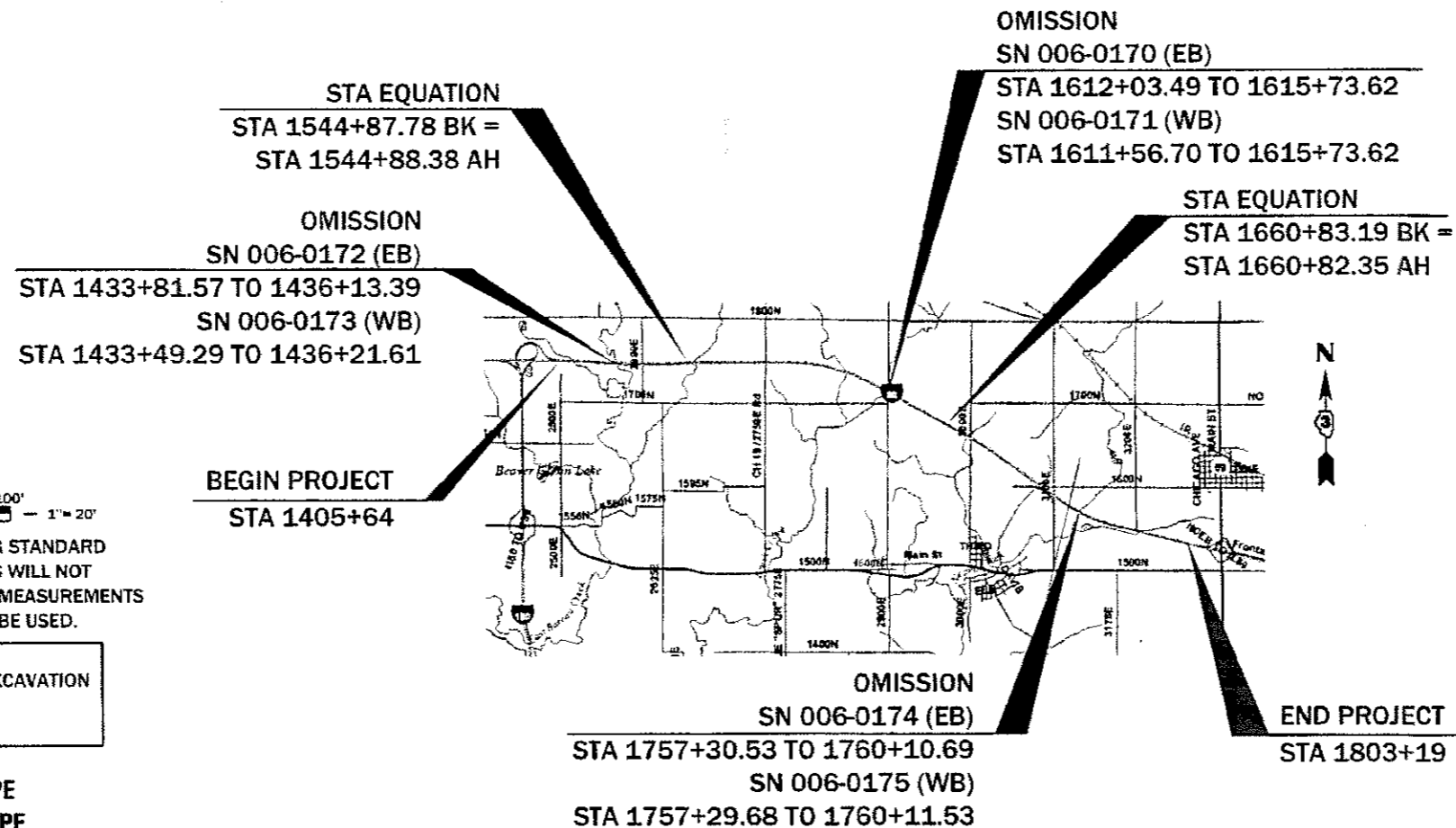
000001-06	STANDARD SYMBOLS, ABBREVIATIONS AND PATTERNS
001006	DECIMAL OF AN INCH AND OF A FOOT
701101-05	OFF-ROAD OPERATIONS, MULTILANE, 15' (4.5 m) TO 24' (600 mm) FROM PAVEMENT EDGE
701400-09	APPROACH TO LANE CLOSURE, FREEWAY/EXPRESSWAY
701406-11	LANE CLOSURE, FREEWAY/EXPRESSWAY, DAY OPERATIONS ONLY
701426-09	LANE CLOSURE, MULTILANE INTERMITTENT OR MOVING OPERATION, FOR SPEEDS ≥ 45 MPH
701901-07	TRAFFIC CONTROL DEVICES



FULL SIZE PLANS HAVE BEEN PREPARED USING STANDARD ENGINEERING SCALES. REDUCED SIZED PLANS WILL NOT CONFORM TO STANDARD SCALES. IN MAKING MEASUREMENTS ON REDUCED PLANS, THE ABOVE SCALES MAY BE USED.

J.U.L.I.E.
JOINT UTILITY LOCATION INFORMATION FOR EXCAVATION
1-800-892-0123
OR 811

PROJECT ENGINEER: JOE KANNEL, PE
UNIT CHIEF: MICHELE LINDEMANN, PE
DISTRICT 3 NO. (815) 434-6131
CONTRACT NO. 66H95



GROSS LENGTH = 39,755 FT. = 7.529 MILE
NET LENGTH (EB) = 38,873.13 FT. = 7.362 MILE
NET LENGTH (WB) = 38,784.15 FT. = 7.345 MILE

ADT (2015) = 25,600
PV = 60% MU = 34.8% SU = 5.2%

STATE OF ILLINOIS
DEPARTMENT OF TRANSPORTATION

SUBMITTED Dec 7 2017
[Signature]
REGIONAL ENGINEER

Feb 2 2018
[Signature]
ENGINEER OF DESIGN AND ENVIRONMENT

Feb 9 2018
[Signature]
DIRECTOR OF PROGRAM DEVELOPMENT

PRINTED BY THE AUTHORITY
OF THE STATE OF ILLINOIS

GENERAL NOTES

PLAN DIMENSIONS AND DETAILS RELATIVE TO THE EXISTING PLANS ARE SUBJECT TO ROUTINE VARIATIONS. THE CONTRACTOR SHALL FIELD VERIFY EXISTING DIMENSIONS AND DETAILS AFFECTING NEW CONSTRUCTION AND MAKE NECESSARY APPROVED ADJUSTMENTS PRIOR TO CONSTRUCTION OF ORDERING OF MATERIALS. SUCH VARIATIONS SHALL NOT BE CAUSE FOR ADDITIONAL COMPENSATION FOR A CHANGE IN THE SCOPE OF THE WORK. HOWEVER, THE CONTRACTOR WILL BE PAID FOR THE QUANTITY FURNISHED BASED UPON THE UNIT BID PRICE.

ANY REFERENCE TO A STANDARD IN THESE PLANS SHALL BE INTERPRETED TO MEAN THE EDITION AS INDICATED BY THE SUBNUMBER SHOWN IN THE LIST OF STANDARDS OR THE COPY INCLUDED IN THESE PLANS.

THE FOLLOWING RATES OF APPLICATION HAVE BEEN USED IN CALCULATING PLAN QUANTITIES FOR CRACK FILLING:

CRACK FILLING	0.35	POUNDS / FOOT
---------------	------	---------------

STATE OF ILLINOIS
DEPARTMENT OF TRANSPORTATION
DISTRICT THREE
AS BUILT INFORMATION

SUPERVISING CONSTRUCTION FIELD ENGINEER

RESIDENT ENGINEER / TECHNICIAN

START & END DATES
OF CONSTRUCTION:

INSPECTORS:

STATE OF ILLINOIS
DEPARTMENT OF TRANSPORTATION
DISTRICT THREE

PREPARED BY: *Tom Benic*
DISTRICT STUDIES & PLANS ENGINEER

DATE: Dec. 7, 2017

EXAMINED BY: *KEB*
DISTRICT CONSTRUCTION ENGINEER

Michael A. Shih
DISTRICT MATERIALS ENGINEER

Tom Alvarez
DISTRICT OPERATIONS ENGINEER

FILE NAME *	USER NAME * camcoradm	DESIGNED -	REVISED -
ctpw_work\cambld\cambld\cambld\20533814\03021195.dgn		DRAWN -	REVISED -
MODEL NAME	PLOT SCALE = 100 0000 / 1	CHECKED -	REVISED -
	PLOT DATE = 11/27/2017	DATE -	REVISED -

STATE OF ILLINOIS
DEPARTMENT OF TRANSPORTATION

GENERAL NOTES

SCALE: SHEET OF SHEETS STA. TO STA.

FBI RTE	SECTION	COUNTY	TOTAL SHEETS	SHEET NO.
80	D3 CRACK SEAL 2018-3	BUREAU	6	2
CONTRACT NO 68H95				
ILLINOIS FED AID PROJECT				

CONSTR. CODE

90/10 FED/ST

CODE NO.	ITEM	UNIT	TOTAL QUANTITY	ROADWAY
				0005 RURAL
45100100	CRACK ROUTING (PAVEMENT)	FOOT	77657	77657
45100200	CRACK FILLING	POUND	27180	27180
67100100	MOBILIZATION	LSUM	1	1
X0326880	MESSAGE BOARD VEHICLE DRIVER	HOUR	30	30
X0326907	PORTABLE, VEHICLE MOUNTED, CHANGEABLE MESSAGE SIGN	CAL MO	0.5	0.5
X7010216	TRAFFIC CONTROL AND PROTECTION, (SPECIAL)	LSUM	1	1
X7015005	CHANGEABLE MESSAGE SIGN	CAL DAY	30	30

FILE NAME =	USER NAME = cecoranin	DESIGNED -	REVISED -
pw:\IL084EBID\INTEG\Illinois.gov\PW\DOT\Documents\DOT Offices\District 3\Projects\0360-99\CADD\0360H95-sh-		DRAWN -	REVISED -
Default	PLOT SCALE = 100.0000' / in.	CHECKED -	REVISED -
	PLOT DATE = 12/6/2017	DATE -	REVISED -

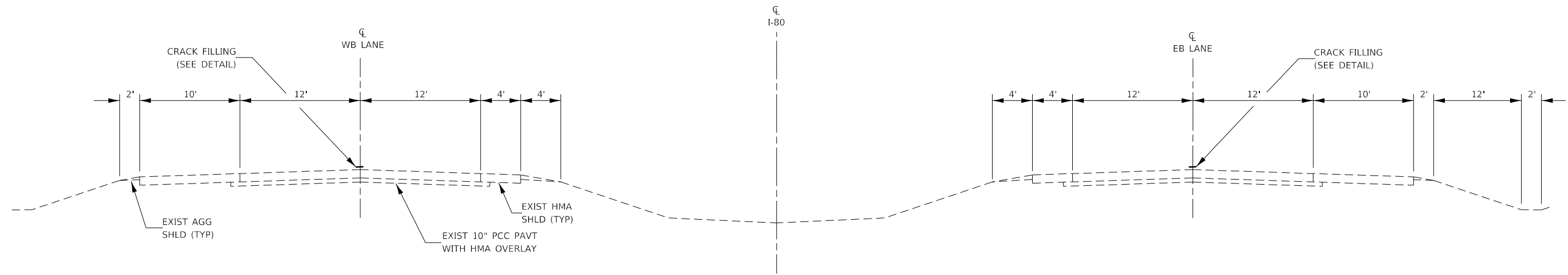
STATE OF ILLINOIS
DEPARTMENT OF TRANSPORTATION

SUMMARY OF QUANTITIES

SCALE: SHEET OF SHEETS STA. TO STA.

F.A.I. RTE.	SECTION	COUNTY	TOTAL SHEETS	SHEET NO.
80	D3 CRACK SEAL 2018-2	BUREAU	6	3
CONTRACT NO. 68H95				
ILLINOIS FED. AID PROJECT				

REV



TYPICAL SECTION

WESTBOUND

STA 1405+64 TO STA 1433+49.29
 OMISSION STA 1433+49.29 TO STA 1436+21.61
 STA 1436+21.61 TO STA 1544+87.78
 STA EQ STA 1544+87.78 BK = STA 1544+88.38 AH
 STA 1544+88.38 TO STA 1611+56.70
 OMISSION STA 1611+56.70 TO STA 1615+73.62
 STA 1615+73.62 TO STA 1660+83.19
 STA EQ STA 1660+83.19 BK = STA 1660+82.35 AH
 STA 1660+82.35 TO STA 1757+29.68
 OMISSION STA 1757+29.68 TO STA 1760+11.53
 STA 1760+11.53 TO STA 1803+19

EASTBOUND

STA 1405+64 TO STA 1433+81.57
 OMISSION STA 1433+81.57 TO STA 1436+13.39
 STA 1436+13.39 TO STA 1544+87.78
 STA EQ STA 1544+87.78 BK = STA 1544+88.38 AH
 STA 1544+88.38 TO STA 1612+03.49
 OMISSION STA 1612+03.49 TO STA 1615+73.62
 STA 1615+73.62 TO STA 1660+83.19
 STA EQ STA 1660+83.19 BK = STA 1660+82.35 AH
 STA 1660+82.35 TO STA 1757+30.53
 OMISSION STA 1757+30.53 TO STA 1760+10.69
 STA 1760+10.69 STA 1803+19

FILE NAME =	USER NAME = corcoranlm	DESIGNED -	REVISED -
pw:\IL084EBIDINTEG\Illinois.gov\PWIDOT\Documents\DOT Offices\District 3\Projects\D366H95\CADD\366H95-shld-co		DRAWN -	REVISED -
Default	PLOT SCALE = 100,0000' / in.	CHECKED -	REVISED -
	PLOT DATE = 12/5/2017	DATE -	REVISED -

**STATE OF ILLINOIS
 DEPARTMENT OF TRANSPORTATION**

TYPICAL SECTION

SCALE: SHEET OF SHEETS STA. TO STA.

F.A.I. RTE.	SECTION	COUNTY	TOTAL SHEETS	SHEET NO.
80	D3 CRACK SEAL 2018-2	BUREAU	6	4
CONTRACT NO. 66H95				
ILLINOIS FED. AID PROJECT				

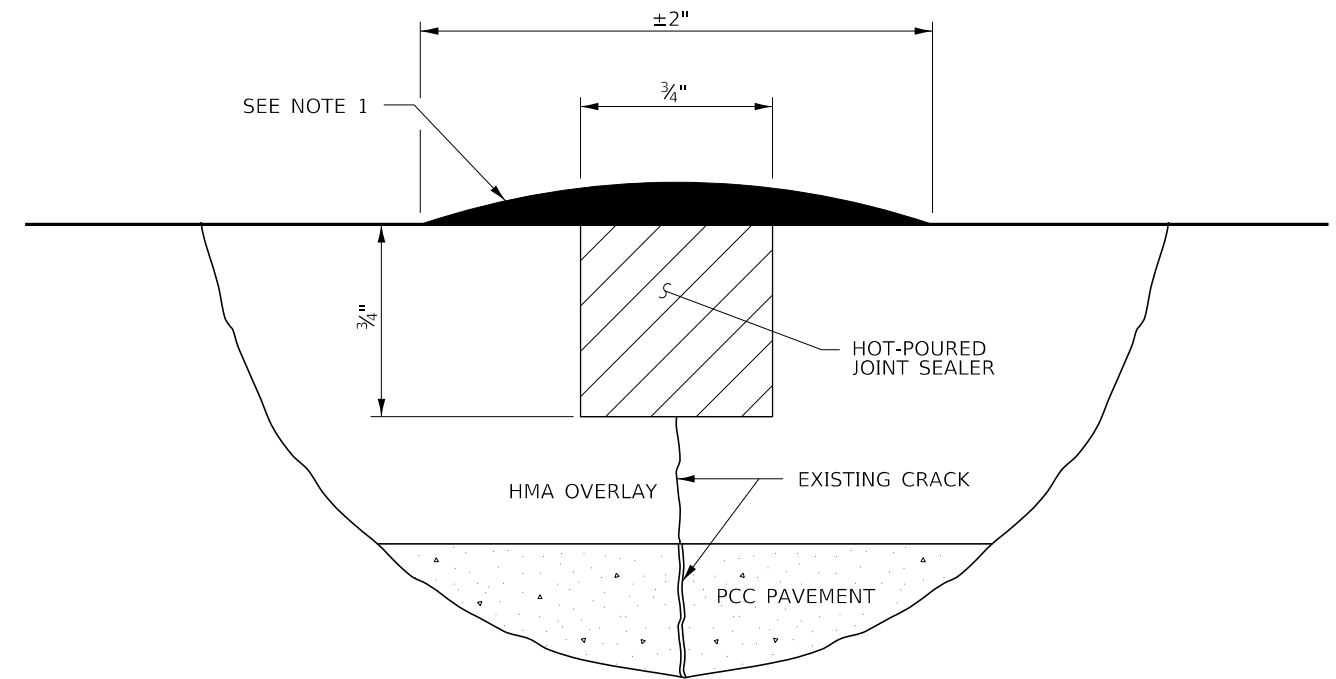
CRACK ROUTING AND FILLING			
LOCATION	DESCRIPTION	CRACK ROUTING (PAVEMENT)	CRACK FILLING
STATION		FOOT	POUND
EASTBOUND CENTERLINE:			
1405+64 TO 1433+81.57		2817.57	986
1433+81.57 TO 1436+13.39	OMISSION		
1436+13.39 TO 1544+87.78		10874.39	3806
1544+87.78 BK = 1544+88.38 AH	STATION EQUATION		
1544+88.38 TO 1612+03.49		6715.11	2350
1612+03.49 TO 1615+73.62	OMISSION		
1615+73.62 TO 1660+83.19		4509.57	1578
1660+83.19 BK = 1660+82.35 AH	STATION EQUATION		
1660+82.35 TO 1757+30.53		9648.18	3377
1757+30.53 TO 1760+10.69	OMISSION		
1760+10.69 TO 1803+19		4308.31	1508
WESTBOUND CENTERLINE:			
1405+64 TO 1433+49.29		2785.29	975
1433+49.29 TO 1436+21.61	OMISSION		
1436+21.61 TO 1544+87.78		10866.17	3803
1544+87.78 BK = 1544+88.38 AH	STATION EQUATION		
1544+88.38 TO 1611+56.70		6668.32	2334
1611+56.70 TO 1615+73.62	OMISSION		
1615+73.62 TO 1660+83.19		4509.57	1578
1660+83.19 BK = 1660+82.35 AH	STATION EQUATION		
1660+82.35 TO 1757+29.68		9647.33	3377
1757+29.68 TO 1760+11.53	OMISSION		
1760+11.53 TO 1803+19		4307.47	1508
PROJECT TOTAL		77657.3	27180

FILE NAME =	USER NAME = corcoranlm	DESIGNED -	REVISED -
pw:\IL084EBIDINTEG\Illinois.gov\PWIDOT\Documents\DOT Offices\District 3\Projects\66H95\CADD\66H95-sht-cov		DRAWN -	REVISED -
Default	PLOT SCALE = 100,0000' / in.	CHECKED -	REVISED -
	PLOT DATE = 12/6/2017	DATE -	REVISED -

**STATE OF ILLINOIS
DEPARTMENT OF TRANSPORTATION**

SCHEDULE OF QUANTITIES			
SCALE:	SHEET	OF	SHEETS
		STA.	TO STA.

F.A.I. RTE.	SECTION	COUNTY	TOTAL SHEETS	SHEET NO.
80	D3 CRACK SEAL 2018-2	BUREAU	6	5
CONTRACT NO. 66H95				
ILLINOIS FED. AID PROJECT				



CRACK ROUTING AND SEALING DETAIL

NOTE 1:
 THE CRACK OR JOINT SHALL BE SLIGHTLY OVERFILLED
 AND IMMEDIATELY SQUEEGEED TO PROVIDE A "BAND-AID"
 TYPE EFFECT APPROXIMATELY TWO INCHES WIDE, FLUSH
 WITH THE PAVEMENT SURFACE, AND WITH THE EDGES
 FEATHERED OUT.

FILE NAME =	USER NAME = corcoranlm	DESIGNED -	REVISED -	STATE OF ILLINOIS DEPARTMENT OF TRANSPORTATION	DETAILS				F.A.I. RTE.	SECTION	COUNTY	TOTAL SHEETS	SHEET NO.
pw:\IL084EBIDINTEG\Illinois.gov\PWIDOT\Documents\DOT Offices\District 3\Projects\D366H95\CADDData\D366H95-sht-cov		DRAWN -	REVISED -		80	D3 CRACK SEAL 2018-2	BUREAU	6	6				
Default		CHECKED -	REVISED -		CONTRACT NO. 66H95				ILLINOIS	FED. AID PROJECT			
	PLOT SCALE = 100,0000' / in.	DATE -	REVISED -		SCALE:	SHEET	OF	SHEETS	STA.	TO STA.			
	PLOT DATE = 12/5/2017												