

STATE OF ILLINOIS
DEPARTMENT OF TRANSPORTATION
DIVISION OF HIGHWAYS

* DELETING PAGES 110-113
114 TOTAL PAGES

PROPOSED HIGHWAY PLANS

ROUTE US 34 /IL 110 FAP 313
SECTION 94(16, 16-1, 17)RS, 48(17, 18)RS
PROJECT NHPP-QBQZ(237)
TYPE of IMPROVEMENT: Resurfacing &
Bridge Rehabilitation
COUNTY WARREN /KNOX

C-94-035-03

JOB ENDS
STA. 363+90

D-94-033-03



LOCATION OF SECTION INDICATED THUS: - [shaded box] -

Sta. Equa. 712 + 50 (BK) = 710 + 00 (AH)
EB Sta. Equa. 898 + 97.33 (BK) = 330 + 50 (AH)
WB Sta. Equa. 897 + 98.26 (BK) = 330 + 50 (AH)
Sta. Equa. 343 + 65 (BK) = 344 + 67 (AH)

INDEX OF SHEETS

- 1 COVER SHEET
- 2-3 GENERAL /JOB SPECIFIC NOTES
- 4-11 SUMMARY OF QUANTITIES
- 12-17 TYPICAL SECTIONS
- 18-29 SCHEDULE OF QUANTITIES
- 30 LINE DIAGRAM
- 31 UNDER STRUCTURE DETAIL
- 32-34 BUTT JOINTS DETAIL
- 35-38 MEDIAN CROSSOVER DETAIL
- 39-40 UNDERDRAIN OUTLET PROTECTION DETAIL
- 41 CLASS D PATCHES (SPECIAL)
- 42 CENTER JOINT FILLING & HMA SURFACE REMOVAL VARIABLE DEPTH DETAIL
- 43-46 DRAINAGE DETAILS
- 47 RIPRAP DITCH FOR EROSION PROTECTION DETAIL
- 48 PROPOSED LIGHT POLE DETAIL
- 49-51 DETOUR SHEETS
- 52-72 EXISTING PLAN AND PROFILE SHEETS
- 73-89 BRIDGE REHABILITATION PLANS 048-0073 & 048-0074
- 90-107 BRIDGE REHABILITATION PLANS 048-0076 & 048-0077
- * 108-118 DISTRICT STANDARDS *DELETING PAGES 110-113

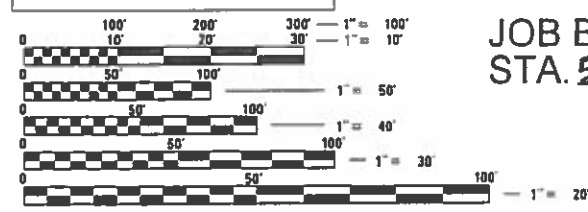
HIGHWAY STANDARDS

442001-04	642001-02	701422-10	821101-02
442201-03	667101-02	701901-07	830021-02
601001-05	701006-05	720011-01	838001-01
604106-01	701011-04	728001-01	630301-08
630001-12	701101-05	729001-01	631032-09
631011-10	701106-02	780001-09	782006
631026-06	701400-09	781001-04	
631031-15	701401-11		

DESIGN DESIGNATION: Class I Route
2015 ADT = 9650
MU = 11.48%
SU = 6.15%
Other Principal Arterial

CADD STANDARDS

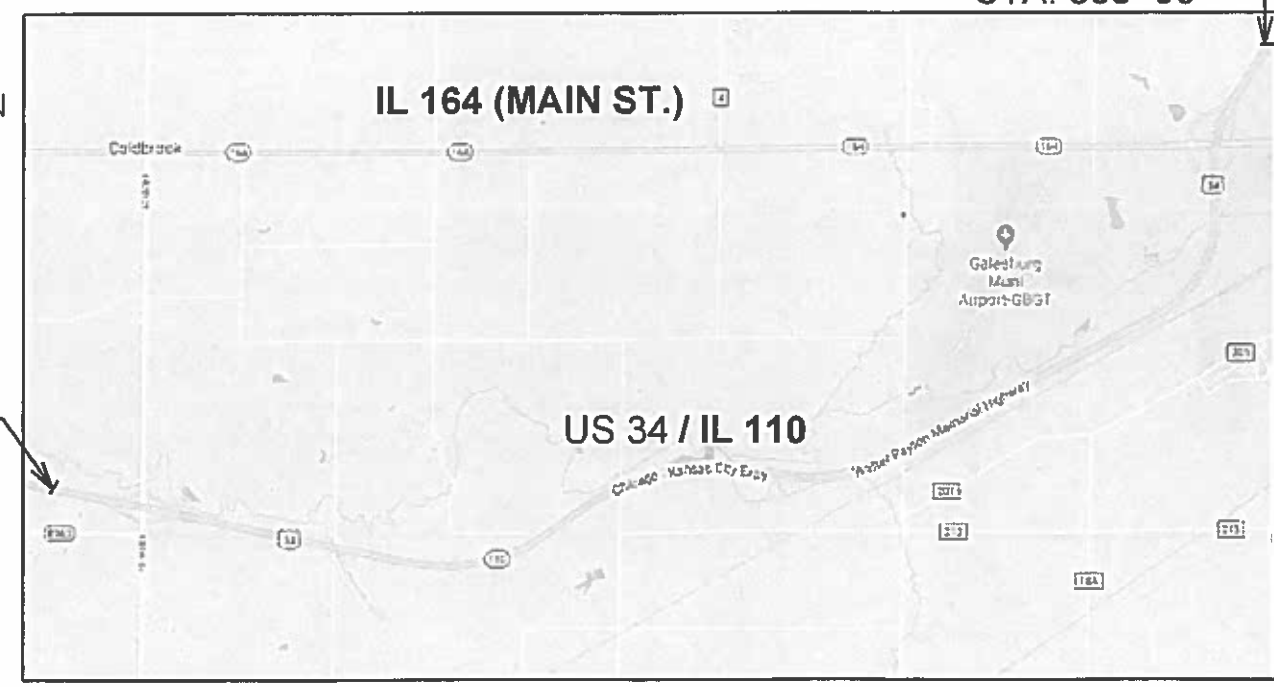
604101-D4	630101-D4
604201-D4	635001-D4
630011-D4	780001-D4



FULL SIZE PLANS HAVE BEEN PREPARED USING STANDARD ENGINEERING SCALES. REDUCED SIZED PLANS WILL NOT CONFORM TO STANDARD SCALES. IN MAKING MEASUREMENTS ON REDUCED PLANS, THE ABOVE SCALES MAY BE USED.

J.U.L.I.E.
JOINT UTILITY LOCATION INFORMATION FOR EXCAVATION
1-800-892-0123
OR 811

PROJECT ENGINEER: Christopher Maushard 309-671-3453
PROJECT MANAGER: George Elias 309-671-3467
Michael Hudelson 309-671-3466
CONTRACT NO. 68339
CATALOG NO. 032725-01D



DESCRIPTION OF WORK:
This project consists of an HMA overlay on US 34/IL 110 Mainline & Ramps
Variable depth shoulder removal & replacement, Center Joint Filling, Concrete Patching
and Pavement Cleaning, New Underdrain Installation and Bridge Rehabilitation.

GROSS LENGTH = 38544 FT. = 7.30 MILE
NET LENGTH = 38544 FT. = 7.30 MILE

STATE OF ILLINOIS
DEPARTMENT OF TRANSPORTATION
DIVISION OF HIGHWAYS

SUBMITTED Dec 14 202017
Kensil A. Garnett (KSD)
REGION THREE ENGINEER

Feb 2 202018
acting ENGINEER OF DESIGN AND ENVIRONMENT

Feb 2 202018
David DIRECTOR OF PROGRAM DEVELOPMENT

PRINTED BY THE AUTHORITY
OF THE STATE OF ILLINOIS

REV 2-28-18

REV 2-20-18

REV

CODE NO.	ITEM	UNIT	TOTAL QUANTITY	CONSTRUCTION CODE															
				ROADWAY WARREN CO.			ROADWAY KNOX CO.			MOWING WARREN CO.		MOWING KNOX CO.		LIGHTING WARREN CO.		048-0073		048-0076	
				0006			0006			0006		0006		0021		048-0074		048-0077	
				80% FD	20% ST		80% FD	20% ST		100% STATE	100% STATE	80% FD	20% ST	80% FD	20% ST	80% FD	20% ST	80% FD	20% ST
X0600001	MICRO-SURFACING AGGREGATE FOR CENTERLINE JOINT FILLING	TON	153				120			33									
X0600002	MICRO-SURFACING EMULSIFIED ASPHALT FOR CENTERLINE JOINT FILLING	POUND	36693				28709			7984									
X0600003	CENTERLINE JOINT CLEANING	FOOT	75830				46404			29426									
X1200181	SHOULDER REMOVAL AND REPLACEMENT, SPECIAL	FOOT	165718				100238			65480									
* X1400095	LUMINAIRE, LED, HORIZONTAL MOUNT, HIGH WATTAGE	EACH	4											4					
X2600002	RECOVERABLE DELINEATOR	EACH	16				12			4									
X4400196	HOT-MIX ASPHALT SURFACE REMOVAL - SPECIAL	SQ YD	8719				5589			3130									
X4401198	HOT-MIX ASPHALT SURFACE REMOVAL, VARIABLE DEPTH	SQ YD	141071				87460			53611									
X4421829	CLASS D PATCHES, TYPE III, 9" (SPECIAL)	SY	65							65									
X6024503	INLETS TO BE ADJUSTED WITH NEW FRAME AND GRATE (SPECIAL)	EACH	1				1												
X6060101	CLASS SI CONCRETE FOR PIPE UNDERDRAIN OUTLET	CY	167				108			59									
X7010216	TRAFFIC CONTROL AND PROTECTION (SPECIAL)	L SUM	1				0.6			0.4									
* X7830060	GROOVING FOR RECESSED PAVEMENT MARKING, LETTERS AND SYMBOLS	SQ FT	129				86			43									
* X7830070	GROOVING FOR RECESSED PAVEMENT MARKING 5"	FOOT	182480				114288			68192									
* X7830074	GROOVING FOR RECESSED PAVEMENT MARKING 7"	FOOT	19474				12112			7362									

* SPECIALTY ITEM

FILE NAME =	USER NAME = subreggs	DESIGNED -	REVISED -
C:\Users\subreggs\Desktop\68339\0468339	plans.dgn	DRAWN -	REVISED -
	PLOT SCALE = 200.0000' / in.	CHECKED -	REVISED -
	PLOT DATE = 12/15/2017	DATE -	REVISED -

**STATE OF ILLINOIS
DEPARTMENT OF TRANSPORTATION**

SUMMARY OF QUANTITIES

F.A.P. RTE.	SECTION	COUNTY	TOTAL SHEETS	SHEET NO.
313	94(16,16-1,17)RS,48(17,18)RS	Warren/Knox	118	9
RTE. US 34, IL 110			CONTRACT NO. 68339	
ILLINOIS FED. AID PROJECT				

BUTT JOINTS											
LOCATION	STATION	TO	STATION	LENGTH	WIDTH	PCC SURFACE REMOVAL (BUTT JOINT)	HMA SURFACE REMOVAL (BUTT JOINT)	TEMPORARY RAMP			
				FT	FT	SQ YD	SQ YD	SQ YD			
WARREN COUNTY (RURAL)											
EB	START OF PROJECT	Mainline	542+70	TO	543+50	80	24	213	-	27	
		Shoulder	542+00	TO	543+50	150	16	-	267	18	
WB	START OF PROJECT	Mainline	542+70	TO	543+50	80	24	213	-	27	
		Shoulder	542+00	TO	543+50	150	16	-	267	18	
RAMPS	CAMERON RD. RAMP A	Ramp	17+94	TO	18+49	55	16	98	-	18	
		Shoulder	17+94	TO	18+49	55	10	-	61	11	
	CAMERON RD. RAMP B	Ramp	1+42	TO	1+97	55	16	98	-	18	
		Shoulder	1+42	TO	1+97	55	10	-	61	11	
	CAMERON RD. RAMP C	Ramp	17+94	TO	18+49	55	16	98	-	18	
		Shoulder	17+94	TO	18+49	55	10	-	61	11	
	CAMERON RD. RAMP D	Ramp	1+02	TO	1+57	55	16	98	-	18	
		Shoulder	1+02	TO	1+57	55	10	-	61	11	
WARREN COUNTY (RURAL) TOTAL						818		778		205	
KNOX COUNTY (URBAN)											
EB	WEST OF SN 048-0077 (OVER CEDAR CREEK)	Mainline	892+61	TO	894+11	150 *	24	430	-	27	
		Shoulder	892+61	TO	894+11	150 *	16	-	293	18	
	EAST OF SN 048-0077 (OVER CEDAR CREEK)	Mainline	896+12	TO	897+62	150 *	VARIABLE		618	-	42
		Shoulder	896+12	TO	897+62	150 *	VARIABLE		-	289	18
	WEST OF SN 048-0074 (OVER MAIN ST.)	Mainline	348+61	TO	350+11	150	24		400	-	27
		Shoulder	348+61	TO	350+11	150	16		-	267	18
	EAST OF SN 048-0074 (OVER MAIN ST.)	Mainline	351+96	TO	353+46	150	24		400	-	27
		Shoulder	351+96	TO	353+46	150	16		-	267	18
	END OF PROJECT	Mainline	362+40	TO	363+90	150	24		-	400	27
		Shoulder	362+40	TO	363+90	150	16		-	267	18
WB	WEST OF SN 048-0076 (OVER CEDAR CREEK)	Mainline	890+98	TO	892+48	150 *	VARIABLE		460	-	27
		Shoulder	890+98	TO	892+48	150 *	VARIABLE		-	289	18
	EAST OF SN 048-0076 (OVER CEDAR CREEK)	Mainline	894+89	TO	896+43	154 *	VARIABLE		594	-	38
		Shoulder	894+89	TO	896+43	154 *	VARIABLE		-	297	18
	WEST OF SN 048-0073 (OVER MAIN ST.)	Mainline	348+46	TO	349+96	150	24		400	-	27
		Shoulder	348+46	TO	349+96	150	16		-	267	18
	EAST OF SN 048-0073 (OVER MAIN ST.)	Mainline	351+75	TO	353+25	150	24		400	-	27
		Shoulder	351+75	TO	353+25	150	16		-	267	18
END OF PROJECT	Mainline	362+40	TO	363+90	150	24		-	400	27	
	Shoulder	362+40	TO	363+90	150	16		-	267	18	
RAMPS	MAIN ST. RAMP C	Ramp	1+00	TO	1+55	55	16	98	-	18	
		Shoulder	1+00	TO	1+55	55	10	-	61	11	
	MAIN ST. RAMP D	Ramp	20+45	TO	21+00	55	16		98	-	18
		Shoulder	20+45	TO	21+00	55	10		-	61	11
KNOX COUNTY (URBAN) TOTAL						3897		3689		530	
GRAND TOTAL						4715		4467		735	

NOTE: TEN FOOT LONG TEMPORARY RAMPS FOR CONSTRUCTION TRAFFIC
 * - BRIDGE JOINTS ON SKEW, VARIABLE LENGTH

RUMBLE STRIPS & STRIP REFLECTIVE CRACK CONTROL				
Location	Shoulder Length Feet	Shoulder Rumble Strips 16" Feet	Strip Reflective Crack Control Feet	
WARREN COUNTY (RURAL)				
542+00	To	712+50	17050	
Station Equation: STA. 712+50 (Bk) = STA. 710+00 (Ah)				
710+00	To	781+22	7122	
Subtotal Length		24172		
x 4 (EB x 2, WB x 2)		96688		
x 2 (EB CL, WB CL)		48344		
Deduct Cameron Rd Ramp Gores + Tapers		-3805		
Warren County Subtotal		92883		
		48344		
KNOX COUNTY (URBAN)				
EASTBOUND				
781+22	To	898+37	11715	
Station Equation: STA. 898+97.38 (Bk) = STA. 333+50 (Ah)				
Subtotal Length		11715		
x 2 (Inside + Outside)		23430		
On Centerline		11715		
WESTBOUND				
781+22	To	897+98	11676	
Station Equation: STA. 897+98.26 (Bk) = STA. 333+50 (Ah)				
Subtotal Length		11676		
x 2 (Inside + Outside)		23352		
On Centerline		11676		
EASTBOUND + WESTBOUND				
333+50	To	343+65	1015	
Station Equation: STA. 343+65.05 (Bk) = STA. 344+67.08 (Ah)				
344+67	To	363+90	1923	
Subtotal Length		2938		
x 4 (EB x 2, WB x 2)		11752		
x 2 (EB CL, WB CL)		5876		
Deduct Main St. Ramp Gores + Tapers		-1498		
Deduct Structures		-1278		
Knox County Subtotal		55758		
		27989		
Grand Total		148641		
		76333		

HOT-MIX ASPHALT SURFACE REMOVAL - SPECIAL	
LOCATION	SQ YD
WARREN COUNTY	5,589
KNOX COUNTY	3,130
TOTAL	8,719