

STATE OF ILLINOIS  
DEPARTMENT OF TRANSPORTATION

1 \* 205 + 4 = 209 TOTAL SHEETS

F.A.P. RTE.	SECTION	COUNTY	TOTAL SHEETS	SHEET NO.
*	**	SANGAMON	205	1
ILLINOIS CONTRACT NO. 72C16				
* 662/753 ** (C)RS-10,N(139,140)RS-4,I-1				

FOR INDEX OF SHEETS, SEE SHEET NO. 2

HIGHWAY CLASSIFICATION

F.A.P. Route 662 (IL 4)  
(INCL OF AUBURN TO S. OF IL 104)

A.D.T.	- 7,046 (2016)	PV = 96.28%
PROJECTED A.D.T.	- 8,398 (2035)	SU = 2.46%
DESIGN SPEED	- 60 mph	MU = 1.26%
POSTED SPEED	- 55 mph	

CLASSIFICATION: MINOR ARTERIAL  
CRS: 3.3 (2015)

F.A.P. Route 662 (IL 4)  
(AT IL 104 IN AUBURN)

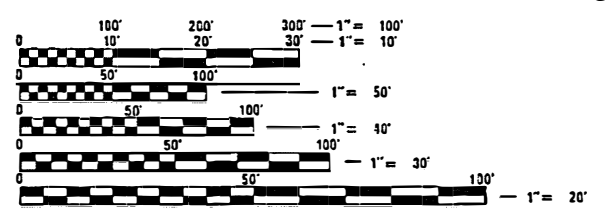
A.D.T.	- 7,250 (2015)	PV = 92.06%
PROJECTED A.D.T.	- 8,883 (2035)	SU = 3.17%
DESIGN SPEED	- 60 mph	MU = 4.37%
POSTED SPEED	- 55 mph	

CLASSIFICATION: MINOR ARTERIAL  
CRS: 3.3 (2015)

F.A.P. Route 753 (IL 104)  
(W. OF IL 4 IN AUBURN TO ECL OF AUBURN)

A.D.T.	- 6,929 (2015)	PV = 89.59%
PROJECTED A.D.T.	- 10,296 (2035)	SU = 3.86%
DESIGN SPEED	- 35-60 mph	MU = 6.55%
POSTED SPEED	- 30-55 mph	

CLASSIFICATION: MINOR ARTERIAL  
CRS: 3.3 (2015)



FULL SIZE PLANS HAVE BEEN PREPARED USING STANDARD ENGINEERING SCALES. REDUCED SIZED PLANS WILL NOT CONFORM TO STANDARD SCALES. IN MAKING MEASUREMENTS ON REDUCED PLANS, THE ABOVE SCALES MAY BE USED.

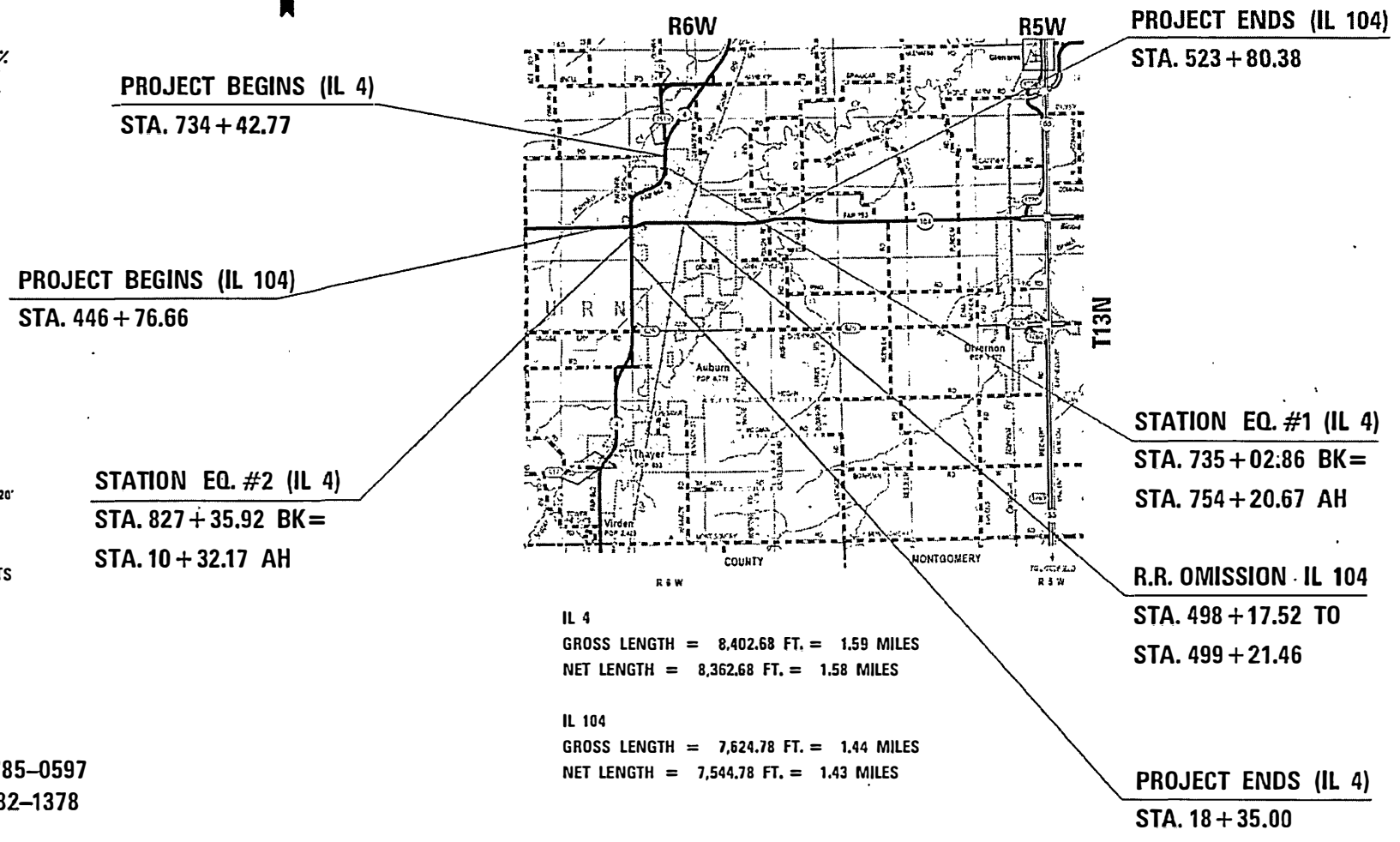
J.U.L.I.E.  
JOINT UTILITY LOCATION INFORMATION FOR EXCAVATION  
1-800-892-0123  
OR 811

PROJECT ENGINEER: JAY EDWARDS (217) 785-0597  
TEAM MANAGER: JONATHAN COX (217) 782-1378

CONTRACT NO. 72C16

# PROPOSED HIGHWAY PLANS

## FAP ROUTE 662 (IL 4) & FAP ROUTE 753 (IL 104) SECTION (C)RS-10, N (139,140)RS-4, I-1 PROJECT STP-MZTC(794) INTERSECTION RECONSTRUCTION, PARKING IMPROVEMENT & 3P RESURFACING SANGAMON COUNTY C-96-090-08



IL 4  
GROSS LENGTH = 8,402.68 FT. = 1.59 MILES  
NET LENGTH = 8,362.68 FT. = 1.58 MILES

IL 104  
GROSS LENGTH = 7,624.78 FT. = 1.44 MILES  
NET LENGTH = 7,544.78 FT. = 1.43 MILES



STATE OF ILLINOIS  
DEPARTMENT OF TRANSPORTATION

SUBMITTED DEC. 18 20 2017

*Jeffrey M. Santy*  
REGIONAL ENGINEER

*Paul J. Edwards*  
ENGINEER OF DESIGN AND ENVIRONMENT

*Paul J. Edwards*  
DIRECTOR OF PROGRAM DEVELOPMENT

PRINTED BY THE AUTHORITY  
OF THE STATE OF ILLINOIS

STANDARDS

000001-06	STANDARD SYMBOLS, ABBREVIATIONS, AND PATTERNS
001001-02	AREA OF REINFORCEMENT BARS
280001-07	TEMPORARY EROSION CONTROL SYSTEMS
424001-10	PERPENDICULAR CURB RAMPS FOR SIDEWALKS
424011-03	CORNER PARALLEL CURB RAMPS FOR SIDEWALKS
424016-04	MID-BLOCK CURB RAMPS FOR SIDEWALKS
424021-04	DEPRESSED CORNER FOR SIDEWALKS
424026-02	ENTRANCE, ALLEY, PEDESTRIAN CROSSING
442201-03	CLASS C & D PATCHES
542011-02	CONCRETE END SECTIONS FOR ELLIPTICAL PIPE CULVERTS 15"-72" EQUIVALENT DIAMETER
542301-03	PRECAST REINFORCED CONCRETE FLARED END SECTION
601001-05	PIPE UNDERDRAINS
601101-02	CONCRETE HEADWALL FOR PIPE UNDERDRAINS
602301-04	INLET TYPE A
602306-03	INLET TYPE B
602401-04	PRECAST MANHOLE TYPE A 4'
602402	PRECAST MANHOLE TYPE A 5'
602601-05	PRECAST REINFORCED CONCRETE FLAT SLAB TOP
604001-04	FRAME & LIDS TYPE 1
604006-05	FRAME & GRATE TYPE 3
604036-03	GRATE TYPE B
606001-07	CONCRETE CURB TYPE B AND CONCRETE CURB AND GUTTER
606006-04	OUTLETS FOR CONCRETE CURB AND GUTTER TYPE B-6.24
606111-03	OUTLETS TYPE 2 FOR TYPE A GUTTER
666001-01	RIGHT OF WAY MARKERS
667101-02	PERMANENT SURVEY MARKERS
701006-05	OFF ROAD OPERATIONS 2L, 2W 15' TO 24' FROM EDGE OF PAVEMENT
701011-04	OFF ROAD MOVING OPERATIONS 2L, 2W DAY ONLY
701201-04	LANE CLOSURE 2L, 2W DAY ONLY, FOR SPEEDS ≥ 45MPH
701301-04	LANE CLOSURE 2L, 2W SHORT TIME OPERATIONS
701306-04	LANE CLOSURE 2L, 2W SLOW MOVING OPERATIONS - DAY ONLY FOR SPEEDS ≥ 45MPH
701311-03	LANE CLOSURE 2L, 2W MOVING OPERATIONS - DAY ONLY
701326-04	LANE CLOSURE 2L, 2W PAVEMENT WIDENING, FOR SPEEDS ≥ 45 MPH
701501-06	URBAN LANE CLOSURE, 2L, 2W, UNDIVIDED
701701-10	URBAN LANE CLOSURE MULTILANE INTERSECTION
701801-06	SIDEWALK CORNER OR CROSS WALK CLOSURE
701901-07	TRAFFIC CONTROL DEVICES
720001-01	SIGN PANEL MOUNTING DETAILS
720006-04	SIGN PANEL ERECTION DETAILS
720011-01	METAL POSTS FOR SIGNS, MARKERS & DELINEATORS
720016-04	MAST ARM MOUNTED STREET NAME SIGNS
728001-01	TELESCOPING STEEL SIGN SUPPORT
731001-01	BASE FOR TELESCOPING STEEL SIGN SUPPORT
780001-05	TYPICAL PAVEMENT MARKING
781001-04	TYPICAL APPLICATIONS OF RAISED REFLECTIVE PAVEMENT MARKERS
782001-01	CURB REFLECTORS
805001-01	ELECTRICAL SERVICE INSTALLATION DETAILS
814001-03	HANDHOLE
814006-02	DOUBLE HANDHOLE
821101-02	LUMINAIRE WIRING DIAGRAM
838001-01	BREAKAWAY DEVICES
857001-01	STANDARD PHASE DESIGNATION DIAGRAMS AND PHASE SEQUENCES
862001-01	UNINTERRUPTIBLE POWER SUPPLY
873001-02	TRAFFIC SIGNAL GROUNDING AND BONDING
876001-04	PEDESTRIAN PUSH BUTTON POST
877011-09	STEEL COMBINATION MAST ARM ASSEMBLY AND POLE 16' THROUGH 55'
878001-10	CONCRETE FOUNDATION DETAILS
880006-01	TRAFFIC SIGNAL MOUNTING DETAILS

INDEX OF SHEETS

1	COVER SHEET
2 - 3	INDEX OF SHEETS, LISTS OF STANDARDS, GENERAL NOTES AND COMMITMENTS
4 - 16	SUMMARY OF QUANTITIES (13)
17 - 39	SCHEDULE OF QUANTITIES (23)
40 - 48	TYPICAL SECTIONS (9)
49 - 50	CROSS-TIES AND BENCH MARKS (2)
51 - 61	PLAN, PROFILE, & DRAINAGE SHEETS (IL 4) (11)
62 - 76	PLAN, PROFILE, & DRAINAGE SHEETS (IL 104) (16)
77	BUTT JOINT & RAMP DETAIL
78 - 79	LINCOLN ST. DETAIL & DRAINAGE SHEETS (2)
80 - 87	PAVEMENT ELEVATION DETAILS (8)
88 - 99	STORM WATER POLLUTION & PREVENTION PLAN (12)
100 - 102	INTERSECTION DETAIL & ISLAND DETAIL (3)
103 - 110	PAVEMENT MARKING DETAILS (8)
111 - 117	TRAFFIC SIGNAL DETAIL (7)
118	SOIL BORING LOGS
119	CONCRETE COLLAR DETAIL
120	SUPERELEVATION DETAIL
* 121 - 138	SIDEWALK DETAILS (18)
139 - 140	ENTRANCE AND SIDEROAD DETAILS (2)
141	PIPE UNDERDRAIN DETAILS
142 - 176	CROSS-SECTION SHEETS (IL 4) (35)
177 - 195	CROSS-SECTION SHEETS (IL 104) (19)
196 - 204	CROSS-SECTION SHEETS (LINCOLN ST.) (9)
205	CROSS-SECTION SHEETS (OPPORTUNITY ST.)

\* INCLUDES SHEETS 121A & 121B.

△ \*\* INCLUDES SHEETS 115A & 115B

DISTRICT SIX	
EXAMINED	June 9 <sup>th</sup> 20 17
<i>John C. Wagoner</i>	
OPERATIONS ENGINEER	

EXAMINED	June 28 <sup>th</sup> 20 17
<i>Justin L. Johnson</i>	
PROJECT IMPLEMENTATION ENGINEER	

EXAMINED	July 31 20 17
<i>Jeffrey P. Meyer</i>	
PROGRAM DEVELOPMENT ENGINEER	

△ REV. 2-20-2018

FILE NAME :	USER NAME : cdx.jw	DESIGNED - JWC	REVISED -	<b>STATE OF ILLINOIS DEPARTMENT OF TRANSPORTATION</b>	<b>INDEX OF SHEETS &amp; HIGHWAY STANDARDS</b>	F.A.P. RTE.	SECTION	COUNTY	TOTAL SHEETS	SHEET NO.
Default	PLT SCALE : 48.0000' / in.	CHECKED - JWC	REVISED -			.	**	SANGAMON	205	2
	PLT DATE : 12/15/2017	DATE -	REVISED -			SCALE:	SHEET 1 OF 1 SHEETS	STA.	TO STA.	CONTRACT NO. 72C16



## GENERAL NOTES

- ① WHERE SECTION OR SUBSECTION MONUMENTS ARE ENCOUNTERED, THE ENGINEER SHALL BE NOTIFIED BEFORE SUCH MONUMENTS ARE REMOVED. THE CONTRACTOR SHALL PROTECT AND CAREFULLY PRESERVE ALL PROPERTY MARKS AND MONUMENTS UNTIL THE OWNER, AND AUTHORIZED SURVEYOR OR AGENT HAS WITNESSES OR OTHERWISE REFERENCED THEIR LOCATION.
- ② THE NOMINAL THICKNESS FOR BASE AND SURFACE COURSES ARE SHOWN ON THE TYPICAL SECTIONS, STANDARDS, SCHEDULES, OR SPECIAL DETAILS. THE CONSTRUCTED THICKNESS OF THE ABOVE ITEM SHALL NOT BE LESS THAN 90 PERCENT OF THE NOMINAL THICKNESS AT ANY LOCATION.
- ③ THE THICKNESS OF THE HMA MIXTURE SHOWN ON THE PLANS IS THE NOMINAL THICKNESS. DEVIATIONS FROM THE NOMINAL THICKNESS WILL BE PERMITTED WHEN SUCH DEVIATION OCCUR DUE TO IRREGULARITIES IN THE EXISTING SURFACE OR BASE ON WHICH THE BITUMINOUS MIXTURE IS PLACED.
- ④ THE CONTRACTOR SHALL BE RESPONSIBLE FOR PROTECTING UTILITY PROPERTY FROM CONSTRUCTION OPERATIONS AS OUTLINED IN ARTICLE 107.31 OF THE STANDARD SPECIFICATIONS. THE JULIE NUMBER IS 800-892-0123. A MINIMUM OF FORTY-EIGHT HOURS ADVANCED NOTICE IS REQUIRED. ANY DAMAGE TO THE UNDERGROUND FACILITIES CAUSED BY THE CONTRACTOR SHALL BE REPAIRED TO THE SATISFACTION OF THE DEPARTMENT AT THE CONTRACTORS EXPENSE, INCLUDING TEMPORARY REPAIRS WHICH MAY BE REQUIRED TO KEEP THE FACILITY OPERATIONAL WHILE MATERIAL IS BEING OBTAINED TO MAKE PERMANENT REPAIRS.
- ⑤ THE LOCATIONS OF THOSE BURIED AND ABOVEGROUND UTILITIES SHOWN ARE APPROXIMATE, ARE SHOWN FOR CONTRACTOR INFORMATIONAL USE ONLY, AND ARE NOT TO BE REFERENCED FOR CONSTRUCTION PURPOSES. THE IMPLIED PRESENCE OR ABSENCE OF UTILITIES IS NOT TO BE CONSTRUED BY THE OWNER, ENGINEER, CONTRACTOR OR SUBCONTRACTORS TO BE AN ACCURATE AND COMPLETE REPRESENTATION OF UTILITIES THAT MAY OR MAY NOT EXIST ON THE CONSTRUCTION SITE. BURIED AND ABOVE GROUND UTILITY LOCATIONS, IDENTIFICATION, AND MARKING ARE THE SOLE RESPONSIBILITY OF THE CONTRACTOR. REROUTING, DISCONNECTION, PROTECTION, ...ETC OF ANY UTILITIES MUST BE COORDINATED BETWEEN CONTRACTOR, UTILITY COMPANY, AND OWNER. SITE SAFETY, INCLUDING THE AVOIDANCE OF HAZARDOUS ASSOCIATED WITH BURIED AND ABOVE GROUND UTILITIES REMAIN THE SOLE RESPONSIBILITY OF THE CONTRACTOR.

⑥ THE FOLLOWING MIXTURE REQUIREMENTS ARE APPLICABLE:

LOCATION:	IL 4/IL 104 MAINLINE	IL 4/IL 104 MAINLINE*	IL 104 MAINLINE	IL 4 & IL 104	IL 4 & IL 104
MIXTURE USED:	HMA SURF CRSE	LEVEL BIND	BINDER	BASE CRSE/ LOWER LIFT SHLDR	PARKING LN/TOP LIFT SHLDR/ INCIDENTALS
PG:	SBS PG 70-28	PG 64-22	PG 64-22	PG 64-22	PG 64-22
DESIGN AIR VOIDS	4.0% @ N50	4.0% @ N50	4.0% @ N50	4.0% @ N50	4.0% @ N50
MIX COMPOSITION:	IL 9.5	IL 9.5 FG	IL 19.0	IL 19.0	IL 9.5
FRICTION AGGREGATE:	MIX "D"	N/A	N/A	N/A	MIX "C"
QUALITY MANAGEMENT:	OCP	OCP**	OCP	QC/OA	QC/OA
SUBLOT SIZE:	1000 TONS	600 TONS	600 TONS	N/A	N/A

NOTES:

OCP APPLIES TO MAINLINE ONLY

\*INCLUDES LEVELING BINDER WITHIN THE PARKING LANE BETWEEN STA. 464+00.00 TO STA. 477+05.00

\*\* QUALITY MANAGEMENT FOR MATERIAL PLACED IN THE PARKING LANE SHALL BE QC/OA.

THE DENSITY PAY FACTOR FOR IL-9.5FG LEVELING BINDER WILL BE 100%. CORES SHALL BE OBTAINED AT THE INTERVALS REQUIRED BY THE SPECIAL PROVISION FOR HMA-QUALITY CONTROL FOR PERFORMANCE. WHERE LEVELING BINDER IS GREATER THAN 1.25" THICK, DENSITY SHALL BE BETWEEN 90.0 AND 98.0 PERCENT.

AT OTHER LOCATIONS, CORE DATA IS FOR INFORMATION ONLY

- ⑦ IN ADDITION TO FIELD AND AERIAL SURVEYS, PLAN DIMENSIONS AND DETAILS RELATIVE TO THE EXISTING FACILITIES HAVE BEEN TAKEN FROM EXISTING PLANS AND ARE SUBJECT TO CONSTRUCTION VARIATIONS. IT SHALL BE THE CONTRACTOR'S RESPONSIBILITY TO VERIFY SUCH DIMENSIONS AND DETAILS IN THE FIELD. SUCH VARIATIONS SHALL NOT BE A CAUSE FOR ADDITIONAL COMPENSATION DUE TO A CHANGE IN THE SCOPE OF WORK. HOWEVER, THE CONTRACTOR WILL BE PAID FOR THE QUANTITY ACTUALLY FURNISHED AT THE UNIT PRICE BID FOR THE WORK.
- ⑧ THE EXACT LOCATIONS AND SIZES OF PAVEMENT PATCHES SHALL BE DETERMINED BY THE ENGINEER IN THE FIELD.
- ⑨ THE APPROXIMATE AVERAGE THICKNESS OF 2 3/4" IS USED FOR CALCULATING THE QUANTITY FOR AGGREGATE SHOULDERS, TYPE B.
- ⑩ UNLESS NOTED OTHERWISE, STATIONS AND OFFSETS REFER TO CENTERLINE OF PROJECT.
- ⑪ NO PASSING ZONES TO BE FIELD VERIFIED BY THE BUREAU OF OPERATIONS. THE RESIDENT ENGINEER SHALL NOTIFY THE BUREAU OF OPERATIONS AT LEAST 14 DAYS PRIOR TO PLACEMENT OF FINAL PERMANENT PAVEMENT MARKING. (PH: 217-785-5312)
- ⑫ EXISTING ROAD SIGNS THAT INTERFERE WITH CONSTRUCTION WILL BE REMOVED OR RELOCATED AS DIRECTED BY THE ENGINEER. AFTER CONSTRUCTION IS COMPLETED, THE CONTRACTOR WILL REPLACE THE SIGNS AS DIRECTED BY THE ENGINEER. THIS WORK WILL NOT BE PAID FOR SEPARATELY BUT SHALL BE INCLUDED IN THE CONTRACT AND NO COMPENSATION WILL BE ALLOWED.
- ⑬ EXISTING SURVEY MARKERS SHALL BE PAID FOR AT THE CONTRACT UNIT PRICE EACH FOR REMOVAL OF ANY PERMANENT SURVEY MARKERS, TYPE 1.
- ⑭ PROPOSED UPPER AND LOWER LANDING OF THE SIDEWALK RAMPS ARE A MAX OF 2% (1.5% DESIRED) AND 8.3% (8.0% DESIRED) FOR THE SIDEWALK RAMP.
- ⑮ PARKING LANES ON IL 104 THROUGH AUBURN SHALL NOT EXCEED A SLOPE 6%.
- ⑯ WHERE SECTION OR SUB-SECTION MARKERS ARE ENCOUNTERED, THE ENGINEER SHALL BE NOTIFIED IN A TIMELY MANNER BEFORE SUCH MONUMENTS ARE REMOVED. THE CONTRACTOR SHALL PROTECT AND CAREFULLY PRESERVE ALL PROPERTY MARKERS AND MONUMENTS UNTIL THE OWNER, AN AUTHORIZED AGENT OR LAND SURVEYOR HAS WITNESSED AND CROSS-TIED ITS LOCATION.

## COMMITMENTS

- ① THE RESIDENT ENGINEER SHALL CONTACT STUDIES AND PLANS CONCERNING ANY MAJOR PLAN CHANGE. TO MAKE SURE NO PREVIOUS COMMENTS (NOT LISTED) WERE MADE AFFECTING THE DESIGN AND ALLOW AN IMPROVED DESIGN FOR FUTURE PROJECTS.
- ② PARCEL # 6089121TE - THE DEPARTMENT AND OR ITS CONTRACTOR WILL CONTACT CASEY'S RETAIL COMPANY A MINIMUM OF 60 DAYS PRIOR TO THE NEED TO REMOVE ON-PREMISE ADVERTISING SIGN.
- ③ PARCEL # 6089121TE - ANY CONCRETE PAVEMENT WITHIN THE TEMPORARY CONSTRUCTION EASEMENT THAT IS DISTURBED DURING CONSTRUCTION WILL BE REPLACED IN KIND AT NO COST TO CASEY'S RETAIL COMPANY.
- ④ PARCEL # 6089121TE - ACCESS WILL BE MAINTAINED THROUGHOUT CONSTRUCTION WITH MINIMUM CLOSURE FOR CONCRETE CURING. AT LEAST ONE (1) ENTRANCE SHALL REMAIN OPEN AT ALL TIMES DURING CONSTRUCTION.
- ⑤ PARCEL # 6089122TE - THE DEPARTMENT WILL PAVE THE COMMERCIAL ENTRANCE AT STA. 818+52.00 LT TO THE EXISTING ROW LINE.
- ⑥ PARCEL # 6089122TE - THE DEPARTMENT WILL NOT REQUIRE YOUR MAIN ON-PREMISE ADVERTISING LOCATED AT STA 820+00 +/- LT TO BE REMOVED DURING CONSTRUCTION.
- ⑦ PARCEL 6089124 & 6089124TE - DURING THE ACQUISITION PROCESS THE DEPARTMENT AGREED TO ACQUIRE A PORTION OF THE PROPOSED FEE TAKING A TEMPORARY CONSTRUCTION EASEMENT.

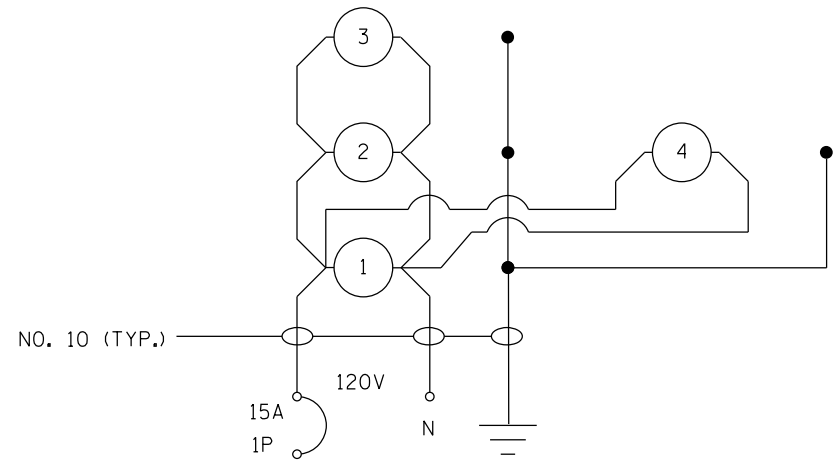
## RATES OF APPLICATION TABLES

THE FOLLOWING RATES OF APPLICATION HAVE BEEN ASSUMED IN CALCULATING PLAN QUANTITIES.

BITUMINOUS MATERIALS (PRIME COAT):	0.05 LBS / SQ FT (MILLING)
HMA SURFACE MIX C / BINDER (112 LBS):	0.025 LBS / SQ FT (HMA LIFTS)
AGGREGATE SHOULDERS:	2.05 TON / CU YD
NITROGEN FERTILIZER NUTRIENT:	90 LBS / ACRE
PHOSPHOROUS FERTILIZER NUTRIENT:	90 LBS / ACRE
POTASSIUM FERTILIZER NUTRIENT:	90 LBS / ACRE
AGRICULTURE GROUND LIMESTONE:	2 TON / ACRE
MULCH:	2 TONS / ACRE

△ REVISED SHEET 2-20-2018

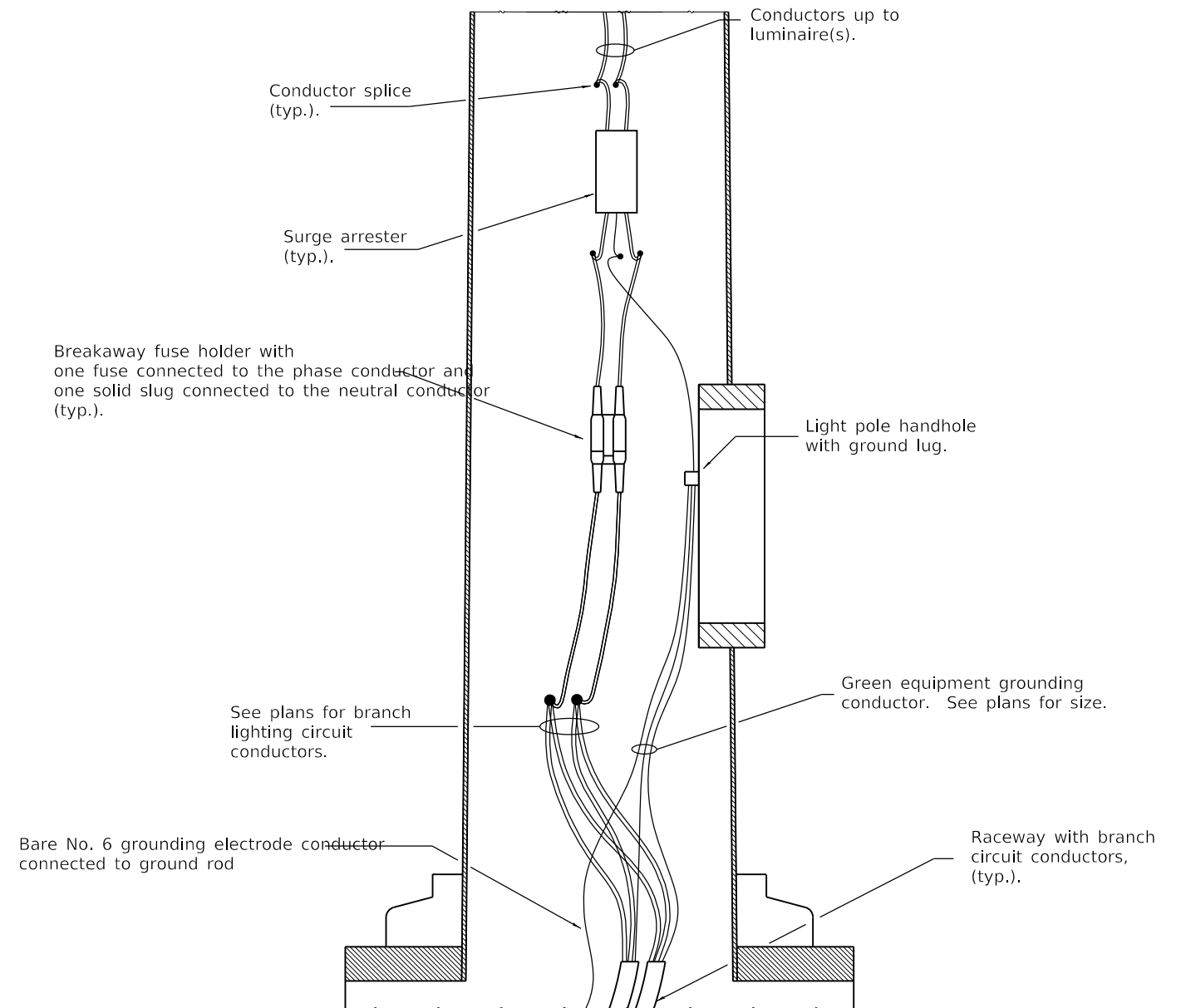
FILE NAME =	USER NAME = coxte	DESIGNED - JWC	REVISED -	<b>STATE OF ILLINOIS DEPARTMENT OF TRANSPORTATION</b>	<b>GENERAL NOTES, COMMITMENTS &amp; RATES OF APPLICATION</b>			F.A.P. RTE.	SECTION	COUNTY	TOTAL SHEETS	SHEET NO.
pw\1\084EBIDINTEG.illinois.gov\PIDOT\Documents\DOT Offices\District 6\Projects\06720\Drawings\EA0\shws\06720C16-sh1-gennote	PLLOT SCALE = 40.0000' / in.	CHECKED - JWC	REVISED -					*	**	SANGAMON	205	3
Default	PLLOT DATE = 12/18/2017	DATE -	REVISED -		SCALE:	SHEET 1	OF 1	SHEETS	STA.	TO STA.	ILLINOIS FED. AID PROJECT	CONTRACT NO. 72C16
* 662/753 ** (C)RS-10,N(139,140)RS-4,I-1												



LIGHTING CKT 1

○ PROPOSED LED LUMINAIRE, MEDIUM WATTAGE, TYPE III

# WIRING DIAGRAMS



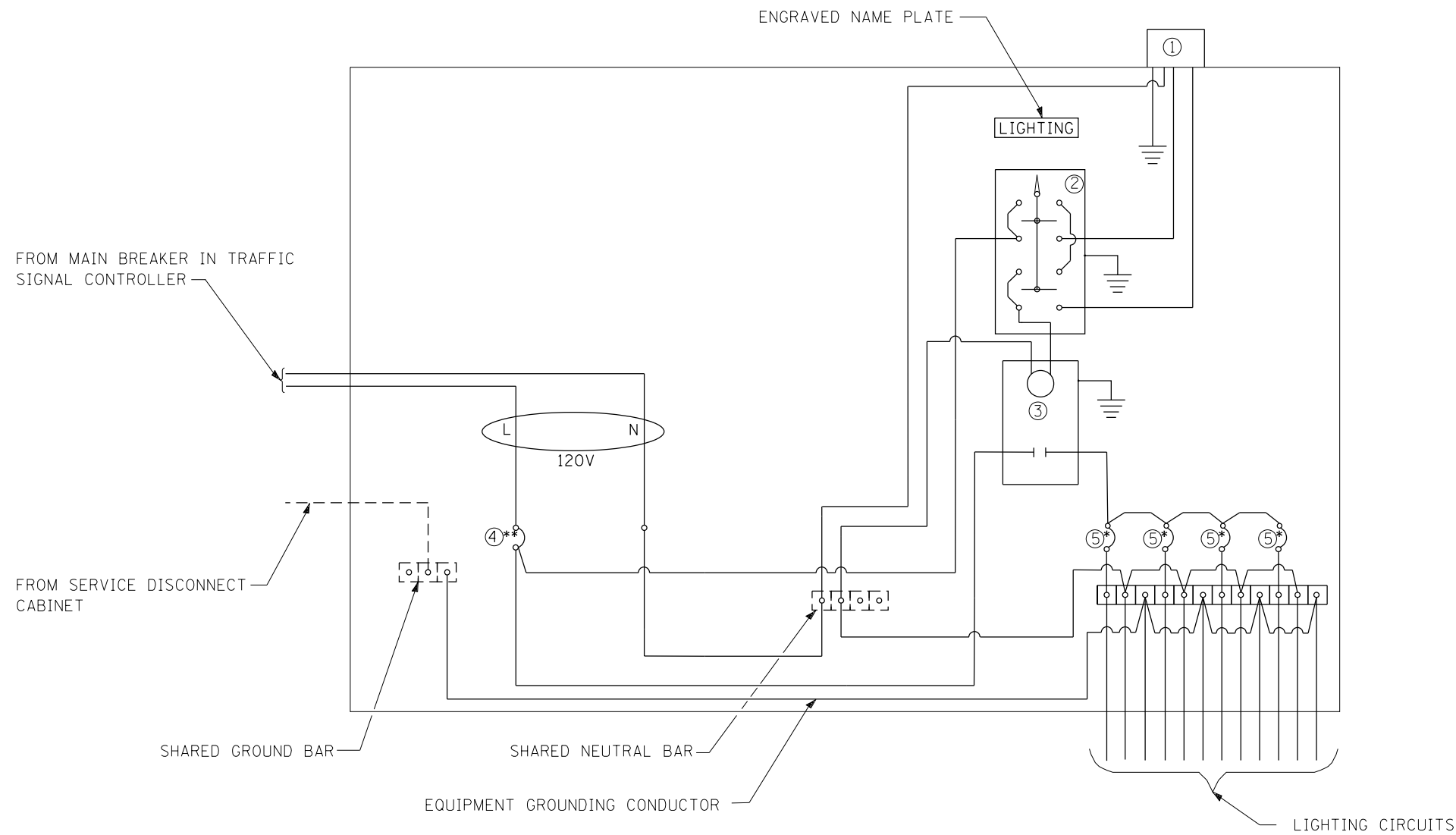
**ELEVATION AT POLE BASE  
WITH CONCRETE FOUNDATION**

### GENERAL NOTES

- Wiring for single luminaire installation shown.
- All conductors originating in pole shall be No. 10 unless noted otherwise.
- Conductors extended into combo poles shall be of a length sufficient for splices to be withdrawn 18 (450) out of pole handle.
- All dimensions are in inches (millimeters) unless otherwise shown.

△ SHEET ADDED 2-20-2018

FILE NAME =	USER NAME = coxjm	DESIGNED - MRM 3-30-2015	REVISED -	<b>STATE OF ILLINOIS DEPARTMENT OF TRANSPORTATION</b>	<b>WIRING DIAGRAM &amp; 120 VOLT LUMINAIRE WIRING IN COMBO POLE</b>	F.A.P. RTE.	SECTION	COUNTY	TOTAL SHEETS	SHEET NO.	
pw:\IL\084EBIDINTEG.illinois.gov\PIDOT\Documents\DOT Offices\District 6\Projects\0672018\Drawings\EA0shdms082018.dgn	PLotted Date = 2/8/2018	CHECKED -	REVISED -			•	••	SANGAMON	205	115A	
Default	PLOT DATE = 2/8/2018	DATE -	REVISED -			CONTRACT NO. 72C16		ILLINOIS FED. AID PROJECT			
						SCALE:	SHEET 1 OF 1 SHEETS	STA.	TO STA.	• 662/753 •• (CRS-10,N(139,140)RS-4,I-1	



**LEGEND**

- Ground connected to shared ground bar.
- Indicates shared with traffic signal controller equipment.
- ① Photocell with integral surge arrester.
- ② HAND-OFF-AUTO selector switch.
- ③ 30 amp, 1 pole electrically held contactor.
- ④ 20 amp, 1 pole, circuit breaker
- ⑤ 15 amp, 1 pole, branch breaker
- \* Quantity of branch breakers shall depend on the combination lighting circuit diagram or as directed by the engineer.
- \*\* Size larger as needed.

**COMBINATION LIGHTING CONTROLLER WIRING DIAGRAM**

**GENERAL NOTES**

- All control installation components shall be U.L. listed.
- All wiring shall be neatly dressed, identified by tags, and supported.
- The circuit breaker shall be clearly labeled for lighting according to Article 1068.01(f) of the Standard Specifications.
- Install under eave photocell on traffic signal controller cabinet per Article 1068.01(e)(2) of the Standard Specifications.
- All lighting equipmt shall be installed on a side mounted insulated subpanel per Article 1068.01(e)(9) of the Standard Specifications on the lower right hand side of the traffic signal controller or as directed by the engineer.
- Provide an engraved stainless steel nameplate on the sub panel reading "LIGHTING".

SHEET ADDED 2-20-2018

FILE NAME =	USER NAME = coxjw	DESIGNED - MRM 3-30-2015	REVISED -	<b>STATE OF ILLINOIS DEPARTMENT OF TRANSPORTATION</b>	<b>COMBINATION LIGHTING CONTROLLER DETAIL</b>			F.A.P. RTE.	SECTION	COUNTY	TOTAL SHEETS	SHEET NO.
pw:\IL\084EBIDINTEG.illinois.gov\PIDOT\Documents\IDOT Offices\District 6\Projects\0672018\Drawings\EA0shdms0872018.dgn	PLotted Scale = 40.0000' / in.	CHECKED -	REVISED -					*	**	SANGAMON	205	115B
Default	PLOT DATE = 2/8/2018	DATE -	REVISED -		CONTRACT NO. 72C16			ILLINOIS FED. AID PROJECT				
					SCALE:	SHEET 1	OF 1 SHEETS	STA.	TO STA.			