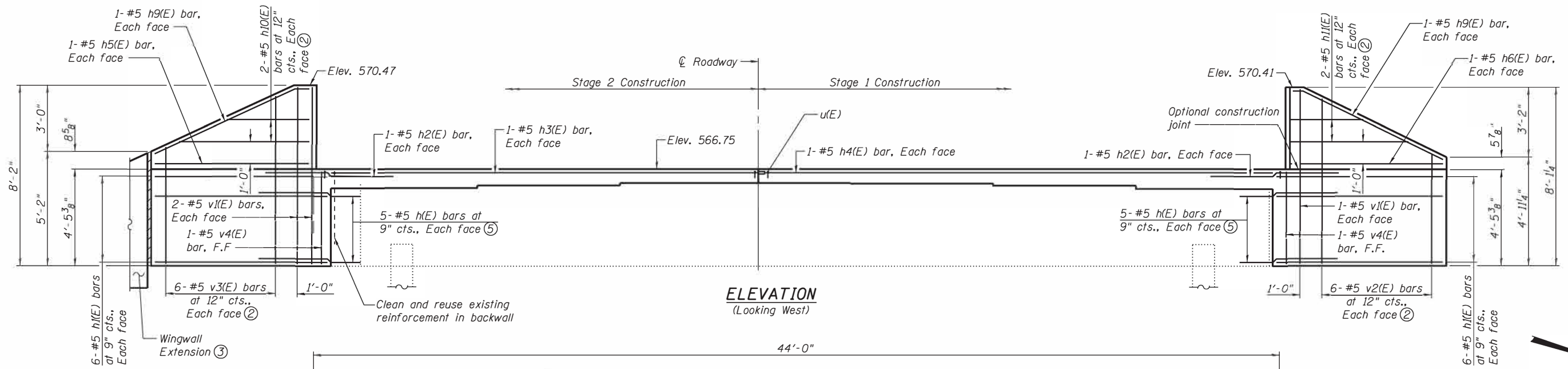
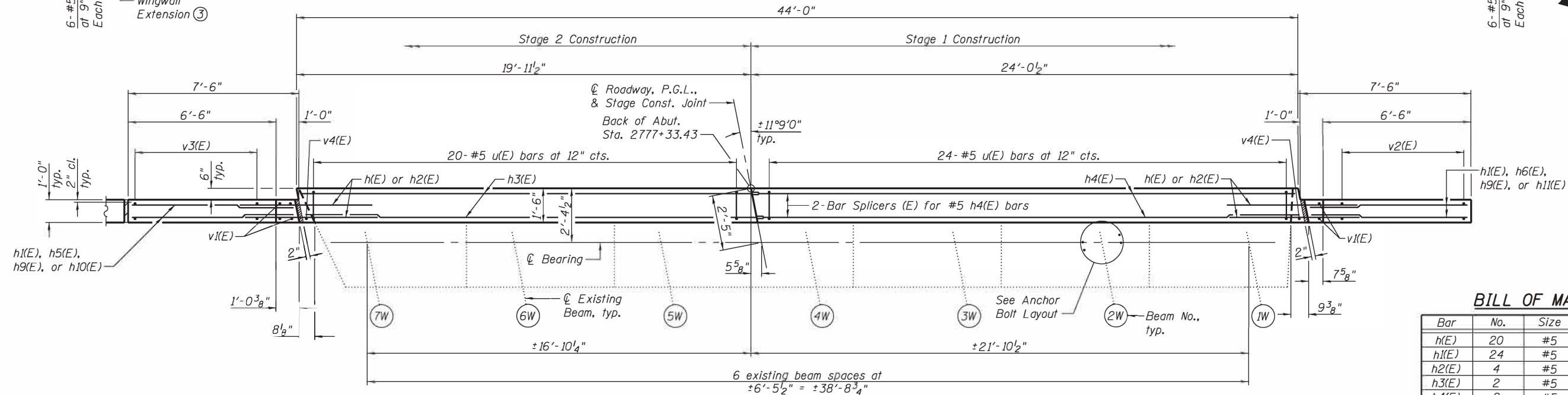


FILE NAME = H:\P\11841\11841.0008 - District 8 Deck Replacements\Structure\003-0013.0014\Microstation\03\0013.0014-Microstation\03\0013.0014-West Abutment Details (W.B.)\dgn
 ILLINOIS DESIGN FIRM LICENSE NO: 184.001115



ELEVATION
(Looking West)

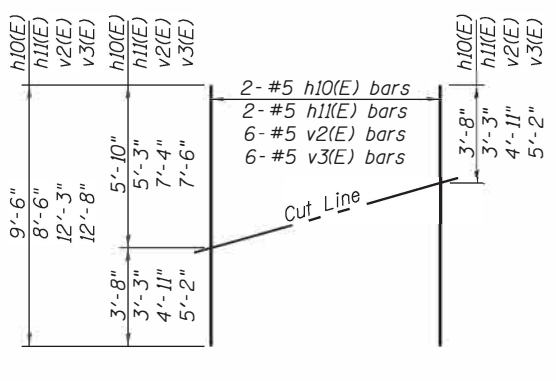


BILL OF MATERIAL

| Bar | No. | Size | Length | Shape |
|----------------------------------|-----|------|---------|-------|
| h(E) | 20 | #5 | 5'-2" | — |
| h1(E) | 24 | #5 | 7'-6" | — |
| h2(E) | 4 | #5 | 6'-2" | — |
| h3(E) | 2 | #5 | 19'-7" | — |
| h4(E) | 2 | #5 | 23'-8" | — |
| h5(E) | 2 | #5 | 7'-0" | — |
| h6(E) | 2 | #5 | 6'-10" | — |
| h9(E) | 4 | #5 | 7'-6" | — |
| h10(E) | 2 | #5 | 9'-6" | — |
| h11(E) | 2 | #5 | 8'-6" | — |
| h12(E) | 12 | #4 | 3'-8" | — |
| n(E) | 10 | #4 | 3'-11" | — |
| l1(E) | 5 | #4 | 5'-10" | — |
| l2(E) | 5 | #4 | 5'-2" | — |
| u(E) | 44 | #5 | 2'-0" | — |
| v1(E) | 6 | #5 | 7'-10" | — |
| v2(E) | 6 | #5 | 12'-3" | — |
| v3(E) | 6 | #5 | 12'-8" | — |
| v4(E) | 2 | #5 | 4'-1" | — |
| v5(E) | 5 | #4 | 8'-6" | — |
| w2(E) | 12 | #4 | 3'-8" | — |
| Structure Excavation | | | Cu. Yd. | 93 |
| Concrete Structures | | | Cu. Yd. | 7.5 |
| Reinforcement Bars, Epoxy Coated | | | Pound | 960 |

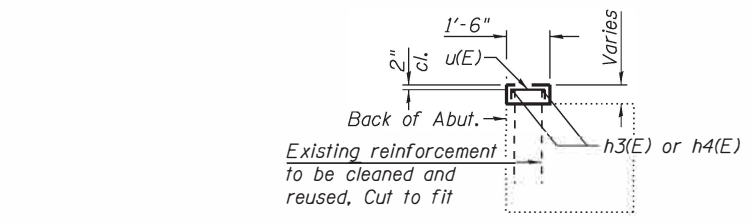
MINIMUM BAR LAP
#5 bar = 2'-11"

- Notes:
- B.F. denotes back face. F.F. denotes front face.
 - See Field Cutting Diagram.
 - For Wingwall Extension Details, see sheet 27 of 30.
 - For details of Bar Splicers, see sheet 29 of 30.
 - Epoxy grout h(E) bars according to Section 584 of the Standard Specifications. Minimum embedment is 1'-9". Embedment depth may be reduced according to the epoxy Manufacturer, if the Contractor provides to the Engineer in writing that the shallower embedment depth is capable of developing the full yield strength of the reinforcement at the surface of the existing concrete.



FIELD CUTTING DIAGRAM

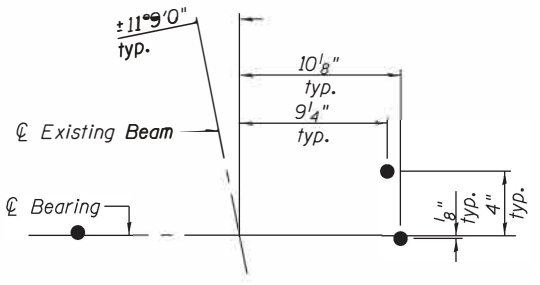
Order h10(E), h11(E), v2(E), and v3(E) bars full length. Cut as shown and use remainder of bars in opposite face.



SECTION THRU ABUTMENT

BAR h9(E)

BAR u(E)



ANCHOR BOLT LAYOUT



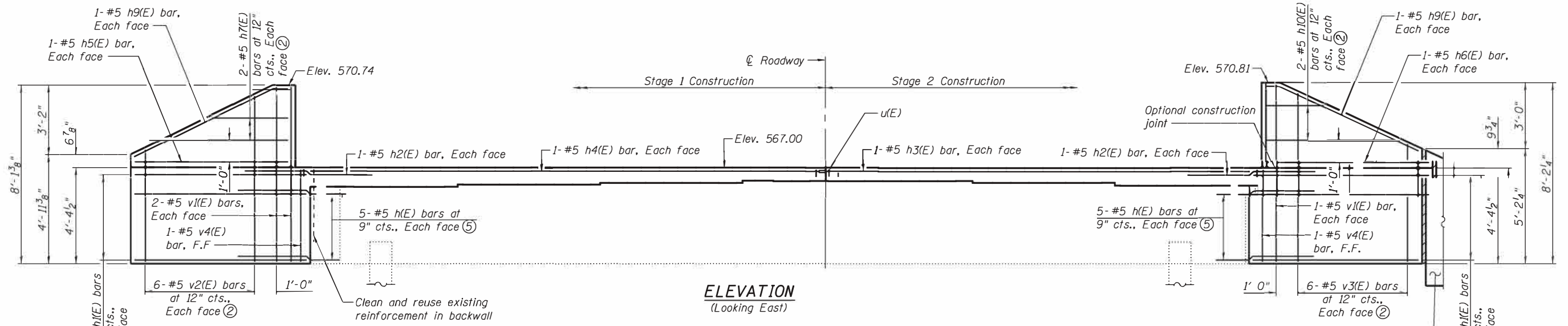
| | | |
|------------------------|----------------|-----------|
| USER NAME = | DESIGNED - JAD | REVISED - |
| PLOT SCALE = | CHECKED - KBC | REVISED - |
| PLOT DATE = 12/13/2017 | DRAWN - KBC | REVISED - |
| | CHECKED - JAD | REVISED - |

STATE OF ILLINOIS
DEPARTMENT OF TRANSPORTATION

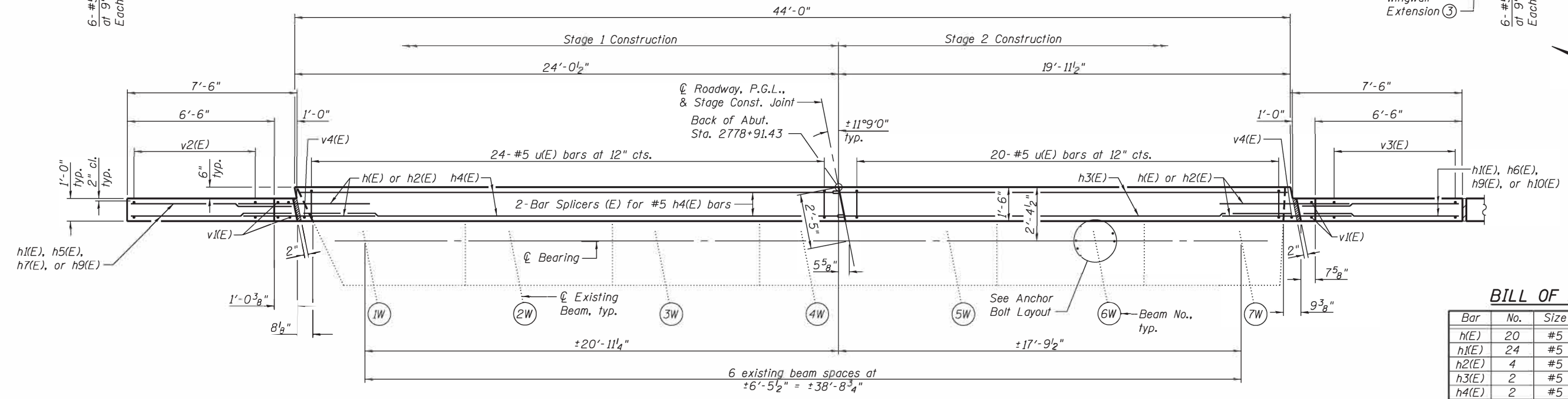
WEST ABUTMENT DETAILS
STRUCTURE NO. 003-0014 (W.B.)

SHEET NO. 25 OF 30 SHEETS

| F.A.I. RTL. | SECTION | COUNTY | TOTAL SHEETS | SHEET NO. |
|---------------------------|---------------|--------|--------------|-----------|
| 70 | 3-(2,3,4)RS-1 | BOND | 236 | 201 |
| CONTRACT NO. 76D23 | | | | |
| ILLINOIS FED. AID PROJECT | | | | |



ELEVATION
(Looking East)

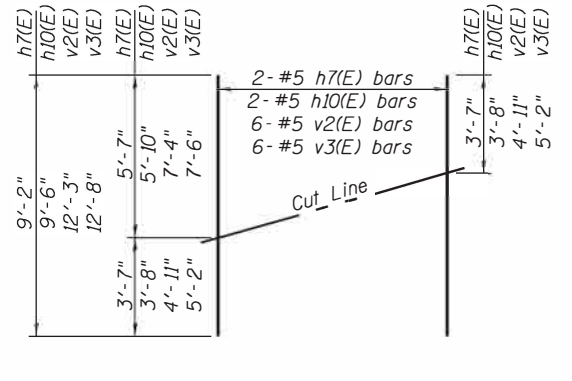


PLAN

MINIMUM BAR LAP
#5 bar = 2'-11"

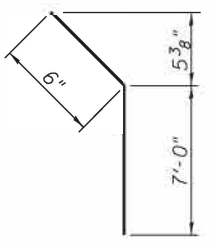
BILL OF MATERIAL

| Bar | No. | Size | Length | Shape |
|----------------------------------|-----|------|---------|-------|
| h(E) | 20 | #5 | 5'-2" | — |
| h1(E) | 24 | #5 | 7'-6" | — |
| h2(E) | 4 | #5 | 6'-2" | — |
| h3(E) | 2 | #5 | 19'-7" | — |
| h4(E) | 2 | #5 | 23'-8" | — |
| h5(E) | 2 | #5 | 7'-0" | — |
| h6(E) | 2 | #5 | 6'-10" | — |
| h7(E) | 2 | #5 | 9'-2" | — |
| h9(E) | 4 | #5 | 7'-6" | — |
| h10(E) | 2 | #5 | 9'-6" | — |
| h12(E) | 12 | #4 | 3'-8" | — |
| n(E) | 10 | #4 | 3'-11" | ┌ |
| t1(E) | 5 | #4 | 5'-10" | ┌ |
| t2(E) | 5 | #4 | 5'-2" | — |
| u(E) | 44 | #5 | 2'-0" | ┌ |
| v1(E) | 6 | #5 | 7'-10" | — |
| v2(E) | 6 | #5 | 12'-3" | — |
| v3(E) | 6 | #5 | 12'-8" | — |
| v4(E) | 2 | #5 | 4'-1" | — |
| v5(E) | 5 | #4 | 8'-6" | — |
| w2(E) | 12 | #4 | 3'-8" | — |
| Structure Excavation | | | Cu. Yd. | 99 |
| Concrete Structures | | | Cu. Yd. | 7.3 |
| Reinforcement Bars, Epoxy Coated | | | Pound | 970 |

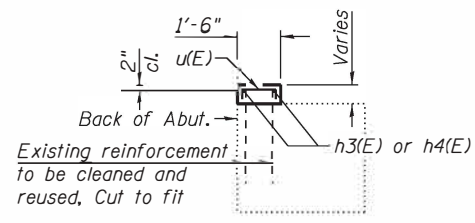


FIELD CUTTING DIAGRAM

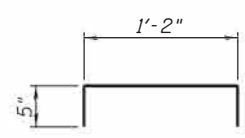
Order h7(E), h10(E), v2(E), and v3(E) bars full length. Cut as shown and use remainder of bars in opposite face.



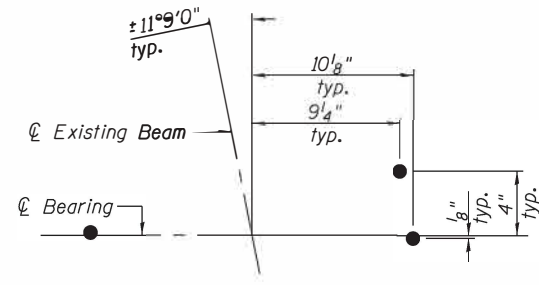
BAR h9(E)



SECTION THRU ABUTMENT



BAR u(E)



ANCHOR BOLT LAYOUT

- Notes:
- B.F. denotes back face, F.F. denotes front face.
 - See Field Cutting Diagram.
 - For Wingwall Extension Details, see sheet 27 of 30.
 - For details of Bar Splicers, see sheet 29 of 30.
 - Epoxy grout h(E) bars according to Section 584 of the Standard Specifications. Minimum embedment is 1'-9". Embedment depth may be reduced according to the epoxy Manufacturer, if the Contractor provides to the Engineer in writing that the shallower embedment depth is capable of developing the full yield strength of the reinforcement at the surface of the existing concrete.

FILE NAME = H:\P\11841\11841.0008 - District 8 Deck Replacements\Structure\SN 003-0013.0014\Microstation\03\0013.0014-76D23-026-East Abutment Details (W.B.).dgn

DATES ASSOCIATES
ILLINOIS DESIGN FIRM LICENSE NO: 184.001115

| | | |
|------------------------|----------------|-----------|
| USER NAME = | DESIGNED - JAD | REVISED - |
| PLOT SCALE = | CHECKED - KBC | REVISED - |
| PLOT DATE = 12/13/2017 | DRAWN - KBC | REVISED - |
| | CHECKED - JAD | REVISED - |

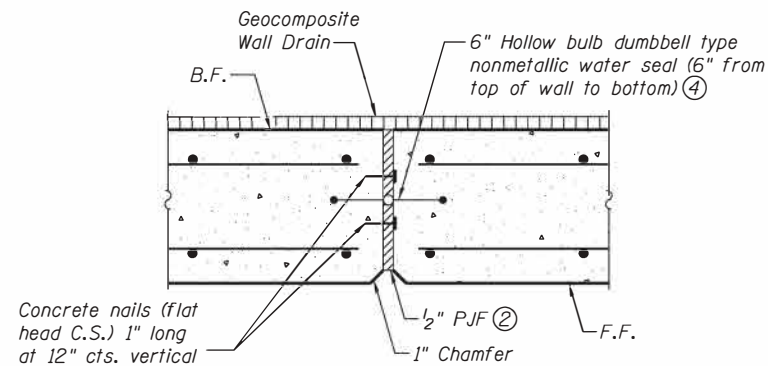
STATE OF ILLINOIS
DEPARTMENT OF TRANSPORTATION

EAST ABUTMENT DETAILS
STRUCTURE NO. 003-0014 (W.B.)

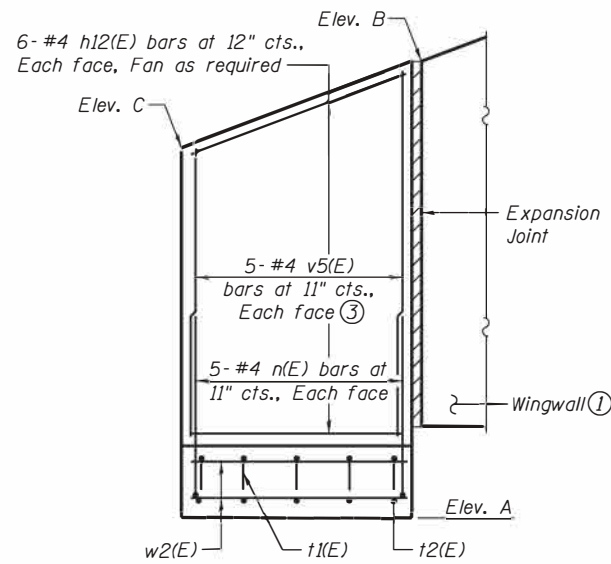
SHEET NO. 26 OF 30 SHEETS

| | | | | |
|--------------------|-----------------------|-------------|---------------------------|---------------|
| F.A.I. RTE. 70 | SECTION 3-(2,3,4)RS-1 | COUNTY BOND | TOTAL SHEETS 236 | SHEET NO. 202 |
| CONTRACT NO. 76D23 | | | ILLINOIS FED. AID PROJECT | |

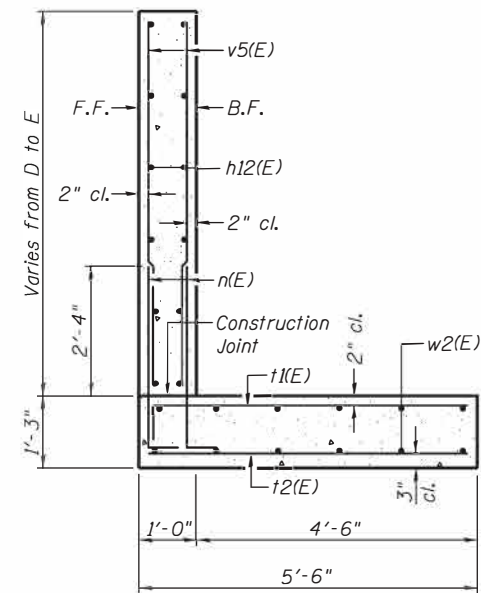
FILE NAME = H:\P\11841\11841.0008 - District 8 Deck Replacements\Structure\1\003-0013.0014\Misc\station\0030013.0014-76D23-027-Minghai\Extension_Details.dgn



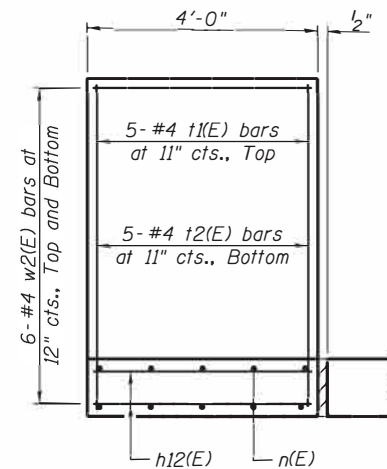
EXPANSION JOINT



ELEVATION



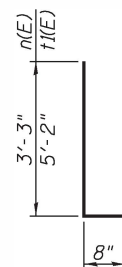
SECTION THRU EXTENSION



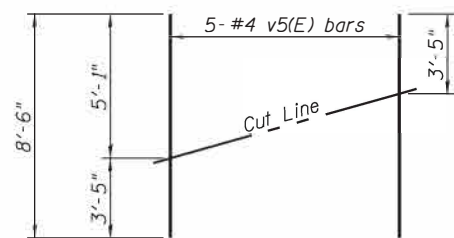
FOOTING PLAN

ELEVATION & DIMENSION TABLE

| | Elev. A | Elev. B | Elev. C | D | E |
|---------------|---------|---------|---------|-----------|-----------|
| E.B. W. Abut. | 560.64 | 567.47 | 565.64 | 3'-9" | 5'-7" |
| E.B. E. Abut. | 561.02 | 567.81 | 565.98 | 3'-8 1/2" | 5'-6 1/2" |
| W.B. W. Abut. | 560.72 | 567.47 | 565.64 | 3'-8" | 5'-6" |
| W.B. E. Abut. | 561.04 | 567.81 | 565.98 | 3'-8 1/4" | 5'-6 1/4" |



BARS n(E) & n1(E)



FIELD CUTTING DIAGRAM

Order v5(E) bars full length. Cut as shown and use remainder of bars in opposite face.

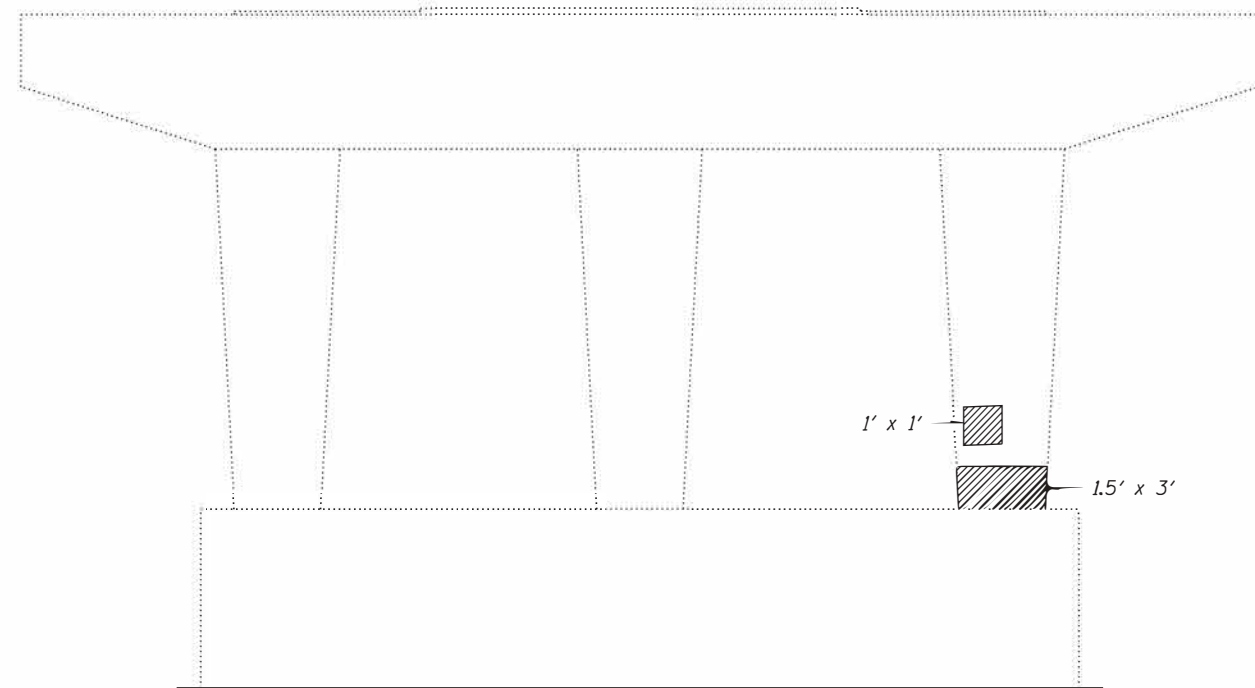
MINIMUM BAR LAP

#4 bar = 2'-1"

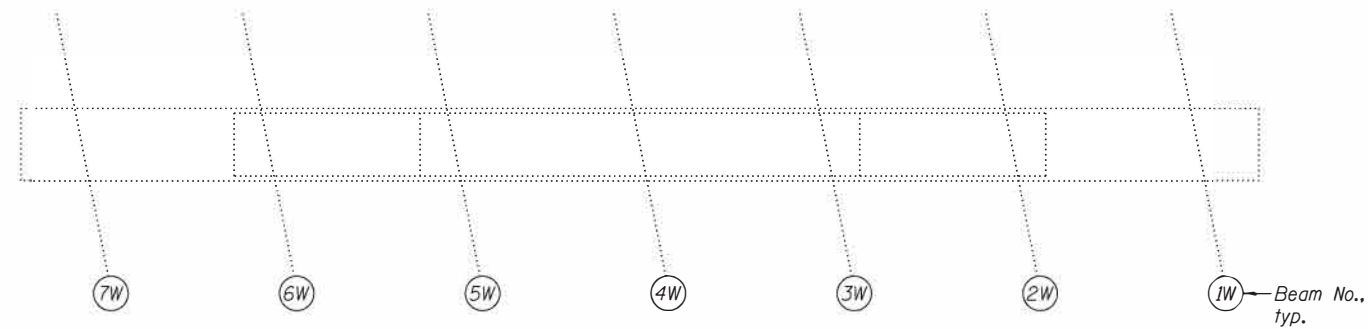
Notes:

- ① For Bill of Material and wingwall details, see sheets 23 thru 26 of 30.
- ② Cost included with Concrete Structures.
- ③ See Field Cutting Diagram.
- ④ 6" Dumbbell type nonmetallic water seal shall be in accordance with Article 503.12 and Section 1054 of the Standard Specifications. Cost included with Concrete Structures.
- ⑤ B.F. denotes back face and F.F. denotes front face.

FILE NAME = H:\P\11841\11841.008 - District 8 Deck Replacements\Structure\1\SN 003-003.0014\Microstation\0030013.0014-76D23-028-Pier Concrete Repairs.dgn



WEST FACE

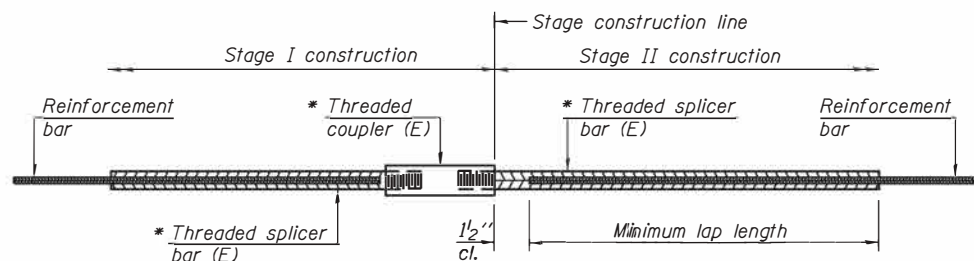


SEAT PLAN

 Structural Repair of Concrete (Depth Equal To or Less Than 5 Inches)

BILL OF MATERIAL

| Item | Unit | Total |
|--|---------|-------|
| Structural Repair of Concrete (Depth Equal To or Less Than 5 Inches) | Sq. Ft. | 5.5 |

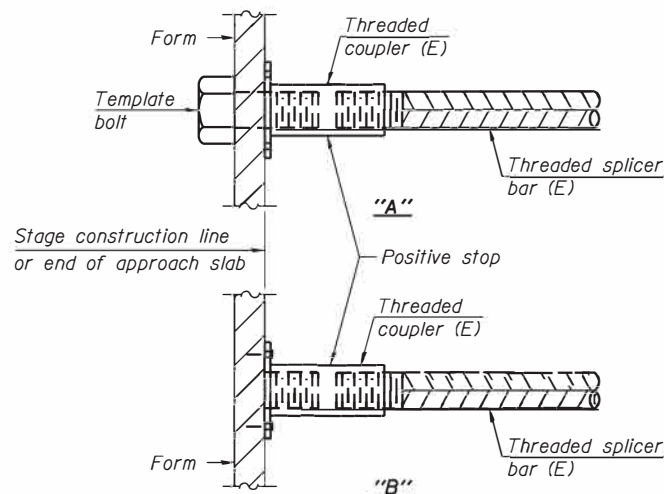


STANDARD BAR SPLICER ASSEMBLY

Threaded splicer bar length = min. lap length + 1 1/2" + thread length

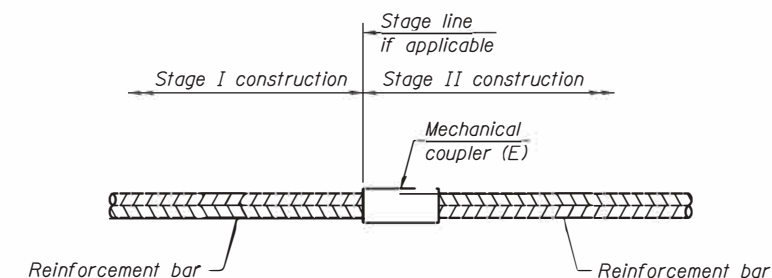
* Epoxy not required on Bar Splicer Assembly components used in conjunction with black bars.

| Location | Bar size | No. assemblies required | Minimum lap length |
|----------------------------------|----------|-------------------------|--------------------|
| Abutment Backwall | #5 | 8 | 2'-7" |
| Deck | #5 | 822 | 2'-7" |
| Diaphragm | #6 | 48 | 3'-6" |
| Top & Bottom of Approach Footing | #5 | 160 | 2'-7" |
| Bottom of Approach Slab | #8 | 236 | 5'-5" |
| Top of Approach Slab | #5 | 180 | 2'-11" |



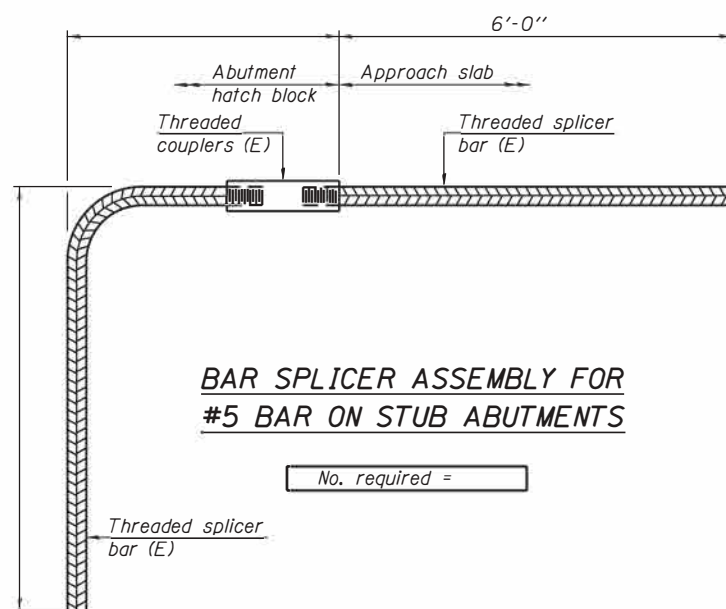
INSTALLATION AND SETTING METHODS

"A" : Set bar splicer assembly by means of a template bolt.
 "B" : Set bar splicer assembly by nailing to wood forms or cementing to steel forms.
 (E) : Indicates epoxy coating.



STANDARD MECHANICAL SPLICER

| Location | Bar size | No. assemblies required |
|----------|----------|-------------------------|
| | | |
| | | |
| | | |
| | | |



BAR SPLICER ASSEMBLY FOR #5 BAR ON STUB ABUTMENTS

No. required =

NOTES

Splicer bars shall be deformed with threaded ends and have a minimum 60 ksi yield strength.
 All reinforcement shall be lapped and tied to the splicer bars.
 Bar splicer assemblies shall be epoxy coated according to the requirements for reinforcement bars. See Section 508 of the Standard Specifications.
 See approved list of bar splicer assemblies and mechanical splicers for alternatives.

FILE NAME = H:\P\11841\11841.008 - District 8 Deck Replacements\Structural\SN 003-0013 0014\Microstation\0030013 0014-76223-029-Bar Splicer Assembly and Mechanical Splicer Details.dgn

BSD-1

11-22-2016



| | | |
|------------------------|------------|-----------|
| USER NAME = | DESIGNED - | REVISED - |
| PLOT SCALE = | CHECKED - | REVISED - |
| PLOT DATE = 12/13/2017 | DRAWN - | REVISED - |
| | CHECKED - | REVISED - |

STATE OF ILLINOIS
DEPARTMENT OF TRANSPORTATION

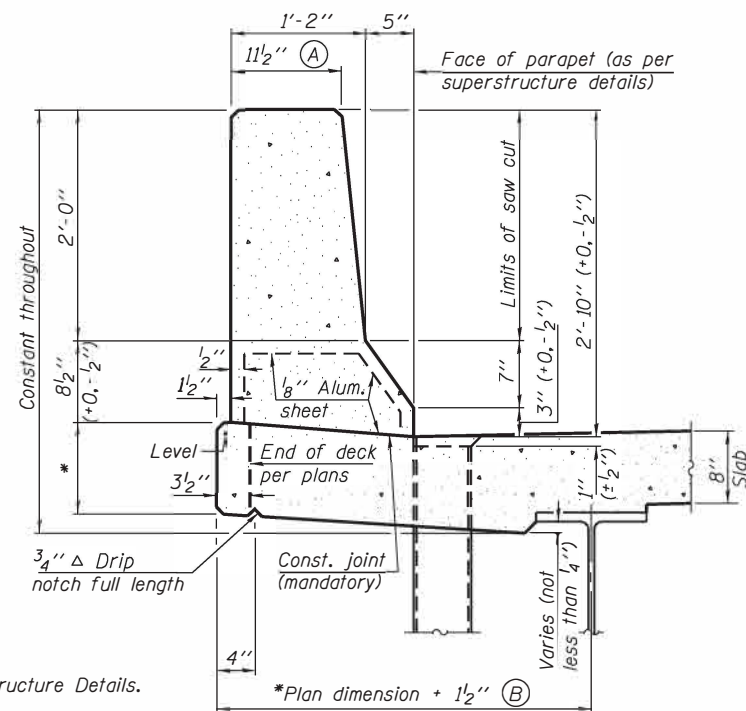
BAR SPLICER ASSEMBLY AND MECHANICAL SPLICER DETAILS
STRUCTURE NO. 003-0013 (E.B.) & 003-0014 (W.B.)

SHEET NO. 29 OF 30 SHEETS

| | | | | |
|---------------------------|---------------|--------|--------------------|-----------|
| F.A.I. RTE. | SECTION | COUNTY | TOTAL SHEETS | SHEET NO. |
| 70 | 3-(2,3,4)RS-1 | BOND | 236 | 205 |
| | | | CONTRACT NO. 76D23 | |
| ILLINOIS FED. AID PROJECT | | | | |

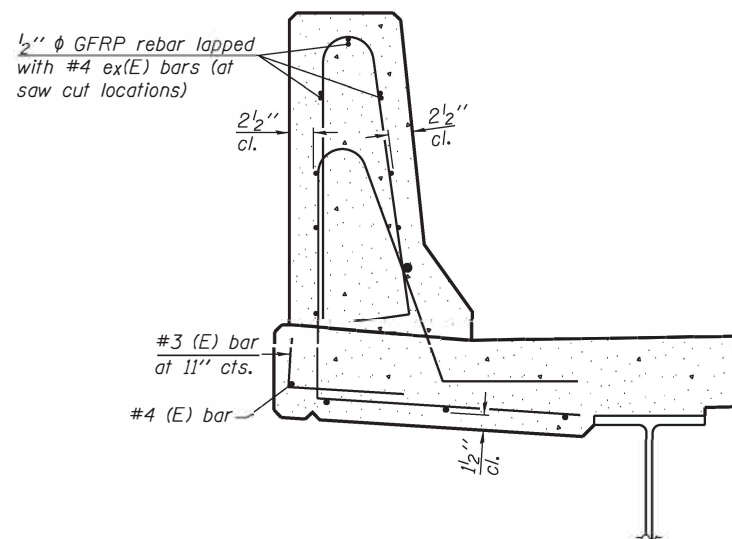
GENERAL NOTES

All dimensions shall remain the same as shown on superstructure details, except dimensions A and B which are to be revised as shown to provide additional clearance. Additional concrete needed to revise dimension A and B = 0.0165 cu. yds./ft. for 34" parapet or = 0.0223 cu. yds./ft. for 42" parapet. Place aluminum sheet in curb portion at and near piers. Full thickness saw cut at all joint locations in lieu of cork joint filler. Steel superstructure shown. Other superstructure types similar.



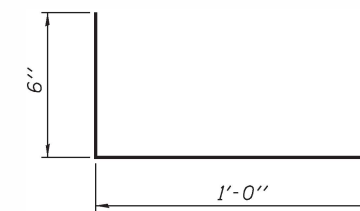
34" F SHAPE PARAPET SECTION
(Showing dimensions)

*See Superstructure Details.

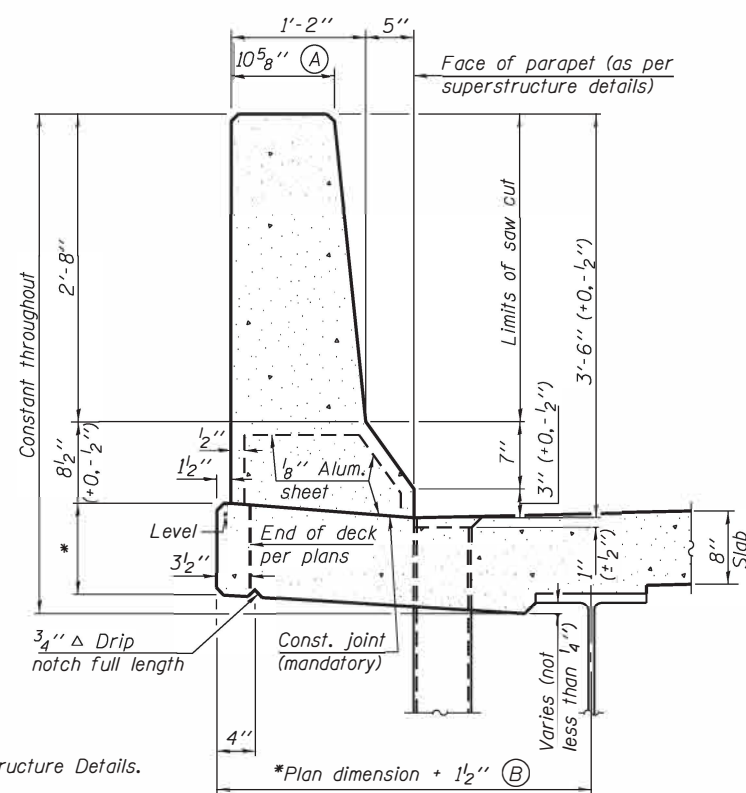


SECTION

(34" parapet shown - 42" parapet similar)
(Showing reinforcement clearances for slip forming and additional reinforcement bars)

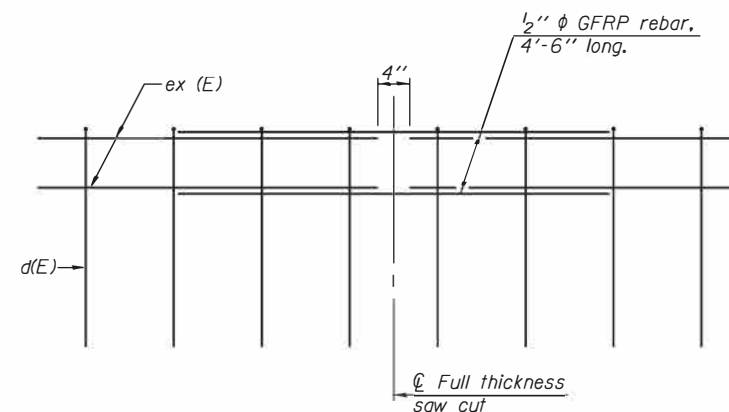


#3 (E) BAR



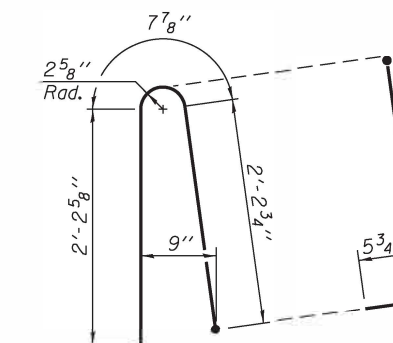
42" F SHAPE PARAPET SECTION
(Showing dimensions)

*See Superstructure Details.

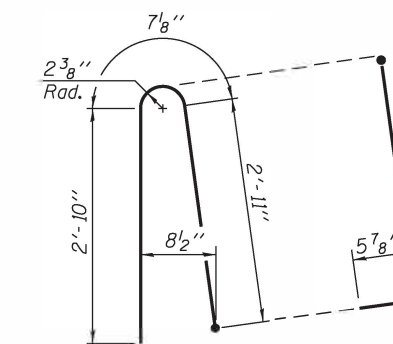


GFRP REBAR STIFFENING DETAIL

(Place as shown in parapet section at each parapet joint location.)



ALTERNATE BAR d(E)
(For 34" parapet when conduit is present)



ALTERNATE BAR d(E)
(For 42" parapet when conduit is present)

SFP 34-42

11-22-2016



| | | |
|------------------------|------------|-----------|
| USER NAME = | DESIGNED - | REVISED - |
| PLOT SCALE = | CHECKED - | REVISED - |
| PLOT DATE = 12/13/2017 | DRAWN - | REVISED - |
| | CHECKED - | REVISED - |

**STATE OF ILLINOIS
DEPARTMENT OF TRANSPORTATION**

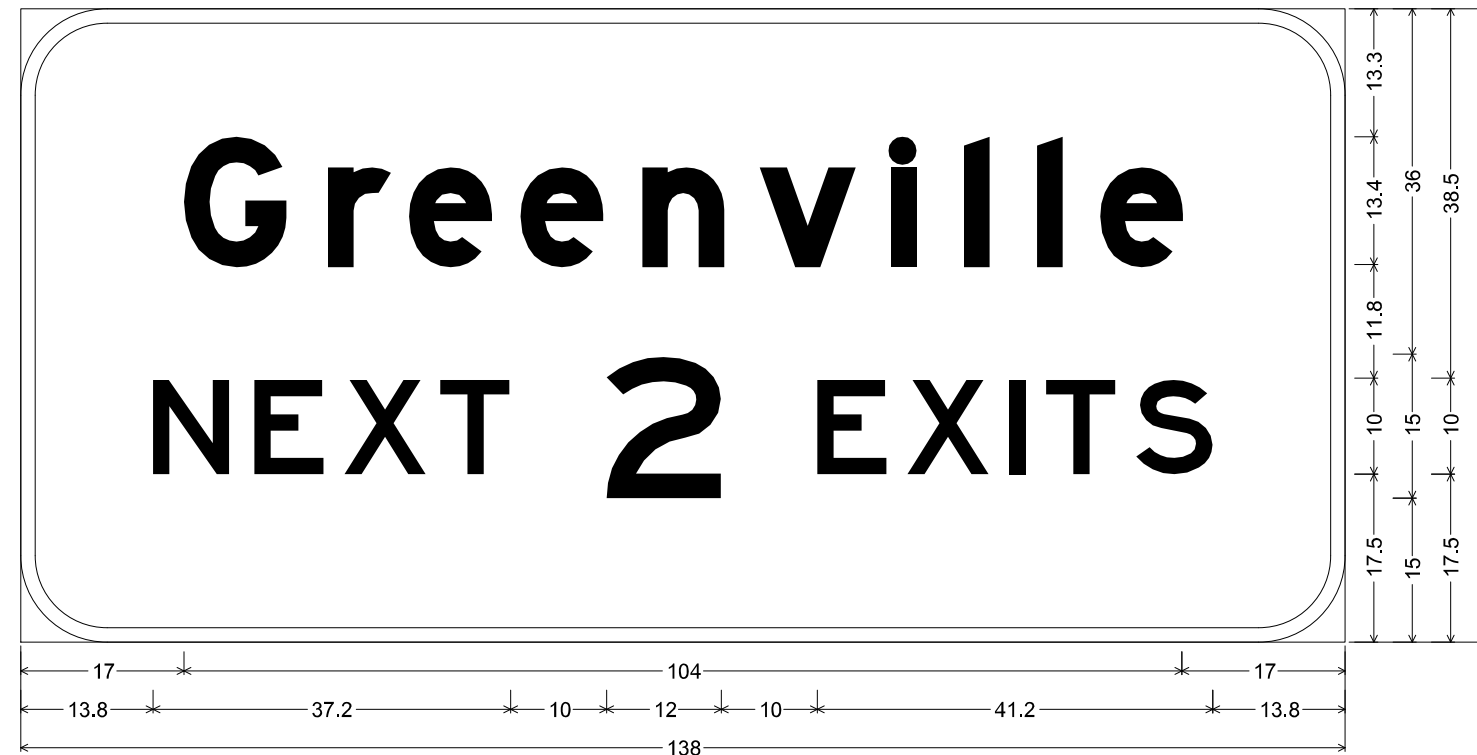
**CONCRETE PARAPET SLIPFORMING OPTION
STRUCTURE NO. 003-0013 (E.B.) & 003-0014 (W.B.)**

SHEET NO. 30 OF 30 SHEETS

| | | | | |
|---------------------------|---------------|--------|--------------|-----------|
| F.A.I. RT# | SECTION | COUNTY | TOTAL SHEETS | SHEET NO. |
| 70 | 3-(2,3,4)RS-1 | BOND | 236 | 206 |
| CONTRACT NO. 76D23 | | | | |
| ILLINOIS FED. AID PROJECT | | | | |

FILE NAME = H:\P\11841\11841.0008 - District 8 Deck Replacements\Structure\11-22-2016\003-0013.0014\Microstation\03\0013.0014-76D23-838-Concrete Parapet_SlipForming_Options.dgn

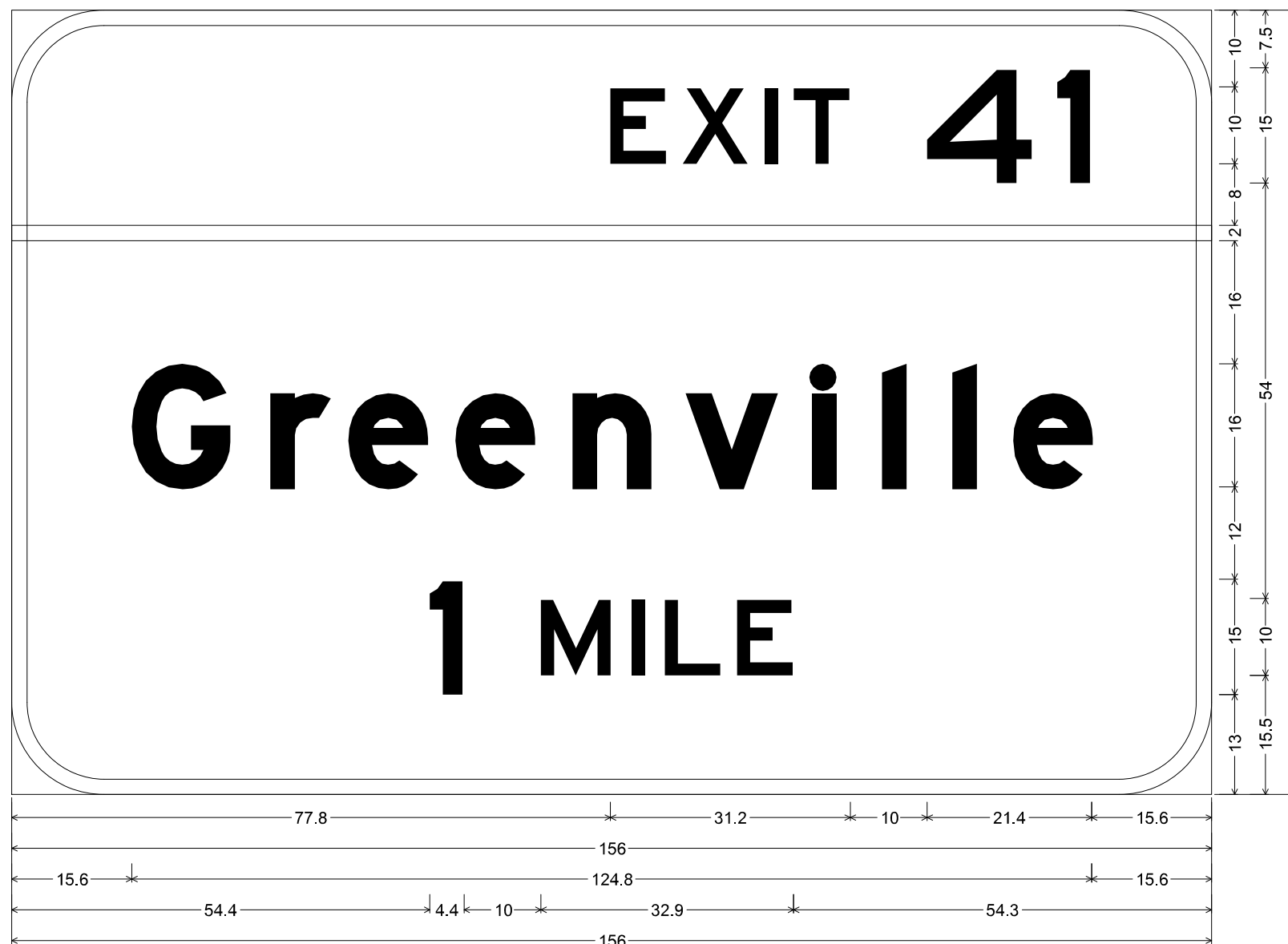
EASTBOUND STATION 2320+00



9.0" Radius, 1.5" Border, White on Green;
 [Greenville] E Mod; [NEXT 2 EXITS] E;
 Table of widths and spaces.

| | | | | | | | | | | | | | | | | | | | | | | | | | | | | | | |
|------|----------|------|-----|----------|-----|-----|----------|-----|-----|----------|-----|------|----------|------|------|----------|-----|-----|----------|-----|-----|----------|-----|-----|----------|-----|-----|----------|-----|------|
| 17.0 | G | 10.6 | 4.4 | r | 6.5 | 2.0 | e | 8.5 | 3.1 | e | 8.5 | 4.2 | n | 8.5 | 3.7 | v | 9.9 | 3.8 | i | 2.5 | 5.1 | l | 2.5 | 5.1 | l | 2.5 | 4.1 | e | 8.5 | 17.0 |
| 13.8 | N | 8.0 | 2.5 | E | 7.4 | 2.0 | X | 8.6 | 1.4 | T | 7.3 | 10.0 | 2 | 12.0 | 10.0 | E | 7.3 | 2.1 | X | 8.6 | 2.1 | I | 1.7 | 2.0 | T | 7.4 | 2.0 | S | 8.0 | 13.8 |

EASTBOUND STATION 2336+20



12.0" Radius, 2.0" Border, White on Green;
 [EXIT 41] E; [Greenville] E Mod; [1 MILE] E;
 Table of widths and spaces.

| | | | | | | | | | | | |
|------|-----|-----|-----|-----|-----|-----|------|------|-----|-----|------|
| 77.8 | E | X | I | T | 4 | 1 | 15.6 | | | | |
| 7.4 | 2.0 | 8.6 | 2.1 | 1.7 | 2.1 | 7.3 | 10.0 | 13.9 | 3.0 | 4.5 | 15.6 |

| | | |
|------|-------|-----|
| -0.0 | 156.0 | 0.0 |
|------|-------|-----|

| | | | | | | | | | | | | | | | | | | | |
|------|-----|-----|-----|------|-----|------|-----|------|-----|------|------|-----|-----|-----|-----|-----|-----|------|------|
| 15.6 | G | r | e | e | n | v | i | l | l | e | 15.6 | | | | | | | | |
| 12.8 | 5.2 | 7.8 | 2.4 | 10.2 | 3.7 | 10.2 | 5.0 | 10.2 | 4.5 | 11.9 | 4.5 | 3.0 | 6.2 | 3.0 | 6.1 | 3.0 | 4.9 | 10.2 | 15.6 |

| | | | | | | | | | |
|------|------|-----|-----|-----|-----|------|-----|-----|------|
| 54.4 | 1 | M | 1 | L | E | 54.3 | | | |
| 4.4 | 10.0 | 9.2 | 2.6 | 1.7 | 2.6 | 7.4 | 2.0 | 7.4 | 54.3 |

| | | | |
|--|------------------------------|------------|-----------|
| FILE NAME = | USER NAME = bergmd | DESIGNED - | REVISED - |
| p:\11\084EBIDINTEG\illinois.gov\PWIDOT\Documents\DOT Offices\District 8\Projects\0875\DRAWING\DATA\EA0\Sheets\0875D23-sht-sign.doc | | DRAWN - | REVISED - |
| | PLOT SCALE = 100.000 / / in. | CHECKED - | REVISED - |
| | PLOT DATE = 2/13/2018 | DATE - | REVISED - |

STATE OF ILLINOIS
 DEPARTMENT OF TRANSPORTATION

SIGN PANEL DETAILS

SCALE: _____ SHEET NO. ___ OF ___ SHEETS STA. _____ TO STA. _____

| | | | | |
|---|---------------|--------|--------------|-----------|
| F.A.I. RTE. | SECTION | COUNTY | TOTAL SHEETS | SHEET NO. |
| 70 | 3-(2,3,4)RS-1 | BOND | 236 | 208 |
| CONTRACT NO. 76D23 | | | | |
| FED. ROAD DIST. NO. _ ILLINOIS FED. AID PROJECT | | | | |

EASTBOUND STATION 2363+07



12.0" Radius, 2.0" Border, White on Green;
 [EXIT 41] E; [Greenville] E Mod; [1/2 MILE] E Mod;
 Table of widths and spaces.

| | | | | | | |
|------|-----|-----|-----|------|------|------|
| E | X | I | T | 4 | 1 | |
| 77.8 | 7.4 | 2.0 | 8.6 | 2.1 | 1.7 | 2.1 |
| | | | 7.3 | 10.0 | 13.9 | 3.0 |
| | | | | | 4.5 | 15.6 |

| | | |
|------|-------|-----|
| -0.0 | 156.0 | 0.0 |
|------|-------|-----|

| | | | | | | | | |
|------|------|-----|-----|-----|------|-----|------|-----|
| G | r | e | e | n | v | i | i | e |
| 15.6 | 12.8 | 5.2 | 7.8 | 2.4 | 10.2 | 3.7 | 10.2 | 5.0 |
| | | | | | | | | |
| | | | | | | | | |

| | | | | |
|------|------|------|-----|-----|
| 1/2 | M | I | L | E |
| 45.9 | 20.9 | 10.0 | 9.3 | 2.5 |
| | | | | |
| | | | | |

| | | | |
|---|--------------------|------------|-----------|
| FILE NAME = | USER NAME = bergmd | DESIGNED - | REVISED - |
| pw:\IL\084EBIDINTEG\Illinois.gov\PIDOT\Documents\IDOT Offices\District 8\Projects\0875\DRAWING\DATA\EA0\Sheets\D876D23-sht-sign.dwg | | CHECKED - | REVISED - |
| | | DATE - | REVISED - |

STATE OF ILLINOIS
 DEPARTMENT OF TRANSPORTATION

SIGN PANEL DETAILS

SCALE: _____ SHEET NO. ___ OF ___ SHEETS STA. _____ TO STA. _____

| F.A.I. RTE. | SECTION | COUNTY | TOTAL SHEETS | SHEET NO. |
|---|---------------|--------|--------------|-----------|
| 70 | 3-(2,3,4)RS-1 | BOND | 236 | 209 |
| CONTRACT NO. 76D23 | | | | |
| FED. ROAD DIST. NO. _ ILLINOIS FED. AID PROJECT | | | | |

EASTBOUND STATION 2382+27



12.0" Radius, 2.0" Border, White on Green;
 [EXIT 41] E; [Greenville] E Mod; Arrow 133 - 30.0" 45°;
 Table of widths and spaces.

| | | | | | | | |
|------|-----|-----|------|------|-----|-----|------|
| 77.8 | E | X | I | T | 4 | 1 | 15.6 |
| | 7.4 | 2.0 | 8.6 | 2.1 | 1.7 | 2.1 | 7.3 |
| | | | 10.0 | 13.9 | 3.0 | 4.5 | |

| | | |
|------|-------|-----|
| -0.0 | 156.0 | 0.0 |
|------|-------|-----|

| | | | | | | | | | | | |
|------|------|-----|-----|-----|------|-----|------|-----|------|------|------|
| 15.6 | G | r | e | e | n | v | i | l | i | e | 15.6 |
| | 12.8 | 5.2 | 7.8 | 2.4 | 10.2 | 3.7 | 10.2 | 5.0 | 10.2 | 4.5 | 11.9 |
| | | | 4.5 | 3.0 | 6.2 | 3.0 | 6.1 | 3.0 | 4.9 | 10.2 | |

| | | |
|------|------|------|
| 66.2 | 23.6 | 66.2 |
|------|------|------|

| | | | |
|--|--------------------|------------|-----------|
| FILE NAME = | USER NAME = bergmd | DESIGNED - | REVISED - |
| pw:\IL\084EBIDINTEG.illinois.gov\PIWIDOT\Documents\IDOT Offices\District 8\Projects\0876\DRAWING\DATA\EA0\Sheets\0876D23-sht-signage | | CHECKED - | REVISED - |
| | | DATE - | REVISED - |

**STATE OF ILLINOIS
 DEPARTMENT OF TRANSPORTATION**

| SIGN PANEL DETAILS | | | |
|--------------------|-----------------------------|------------|---------------|
| SCALE: _____ | SHEET NO. ___ OF ___ SHEETS | STA. _____ | TO STA. _____ |

| F.A.I. RTE. | SECTION | COUNTY | TOTAL SHEETS | SHEET NO. |
|---|---------------|--------|--------------|-----------|
| 70 | 3-(2,3,4)RS-1 | BOND | 236 | 210 |
| CONTRACT NO. 76D23 | | | | |
| FED. ROAD DIST. NO. _ ILLINOIS FED. AID PROJECT | | | | |

EASTBOUND STATION 2602+48



EASTBOUND STATION 2609+18



12.0" Radius, 2.0" Border, White on Green;
 [EXIT 45] E; [Greenville] E Mod; [Carlyle] E Mod; [1/2 MILE] E;
 Table of widths and spaces.

| | | | | | | | |
|------|-------|------|------|------|------|------|------|
| 70.3 | E | X | I | T | 4 | 5 | 15.6 |
| 7.4 | 7.4 | 2.0 | 8.6 | 2.1 | 1.7 | 2.1 | 7.3 |
| 10.0 | 13.9 | 3.0 | 12.0 | 15.6 | | | |
| -0.0 | 156.0 | 0.0 | | | | | |
| 55.5 | 45.0 | 55.5 | | | | | |
| 15.6 | G | r | e | n | v | i | 15.6 |
| 12.8 | 5.2 | 7.8 | 2.4 | 10.2 | 3.7 | 10.2 | 5.0 |
| 10.2 | 3.0 | 4.5 | 11.9 | 4.5 | 3.0 | 6.2 | 3.0 |
| 6.1 | 3.0 | 4.9 | 10.2 | 15.6 | | | |
| 34.1 | C | a | r | l | y | l | 34.1 |
| 12.8 | 4.2 | 10.2 | 6.1 | 7.8 | 3.7 | 3.0 | 4.5 |
| 12.9 | 4.5 | 3.0 | 4.9 | 10.2 | 34.1 | | |
| 46.7 | 1/2 | M | I | L | E | 46.7 | |
| 19.7 | 10.0 | 9.3 | 2.5 | 1.8 | 2.5 | 7.4 | 2.0 |

| | | | |
|--|--------------------|------------|-----------|
| FILE NAME = | USER NAME = bergmd | DESIGNED - | REVISED - |
| pw:\IL084EBIDINTEG\Illinois.gov\PWIDOT\Documents\IDOT Offices\District 8\Projects\08752\DRAWING\DATA\EA0\Sheets\0876023-sht-sign.dwg | | CHECKED - | REVISED - |
| | | DATE - | REVISED - |

**STATE OF ILLINOIS
DEPARTMENT OF TRANSPORTATION**

| SIGN PANEL DETAILS | | | |
|--------------------|-------------------------------|--------------------------|--|
| SCALE: _____ | SHEET NO. ____ OF ____ SHEETS | STA. _____ TO STA. _____ | |

| F.A.I. RTE. | SECTION | COUNTY | TOTAL SHEETS | SHEET NO. |
|---|---------------|--------|--------------|-----------|
| 70 | 3-(2,3,4)RS-1 | BOND | 236 | 214 |
| CONTRACT NO. 76D23 | | | | |
| FED. ROAD DIST. NO. _ ILLINOIS FED. AID PROJECT | | | | |

EASTBOUND STATION 2629+44



12.0" Radius, 2.0" Border, White on Green;
 [EXIT 45] E; [Greenville] E Mod; [Carlyle] E Mod; Arrow 133 - 30.0" 45°;
 Table of widths and spaces.

| | | | | | | | | | | | | | | | | | | | | | | | | | | | | | | |
|------|---|-------|------|---|------|-----|---|------|-----|-----|------|-----|------|------|-----|------|------|-----|---|------|------|---|-----|-----|---|-----|-----|---|------|------|
| 70.3 | E | 7.4 | 2.0 | X | 8.6 | 2.1 | I | 1.7 | T | 7.3 | 10.0 | 4 | 13.9 | 3.0 | 5 | 12.0 | 15.6 | | | | | | | | | | | | | |
| -0.0 | | 156.0 | 0.0 | | | | | | | | | | | | | | | | | | | | | | | | | | | |
| 55.5 | | 45.0 | 55.5 | | | | | | | | | | | | | | | | | | | | | | | | | | | |
| 15.6 | G | 12.8 | 5.2 | r | 7.8 | 2.4 | e | 10.2 | 3.7 | e | 10.2 | 5.0 | n | 10.2 | 4.5 | v | 11.9 | 4.5 | i | 3.0 | 6.2 | i | 3.0 | 6.1 | i | 3.0 | 4.9 | e | 10.2 | 15.6 |
| 34.1 | C | 12.8 | 4.2 | a | 10.2 | 6.1 | r | 7.8 | 3.7 | i | 3.0 | 4.5 | y | 12.9 | 4.5 | i | 3.0 | 4.9 | e | 10.2 | 34.1 | | | | | | | | | |
| 66.2 | | 23.6 | 66.2 | | | | | | | | | | | | | | | | | | | | | | | | | | | |

| | | | |
|--|-----------------------------|------------|-----------|
| FILE NAME = | USER NAME = bergmd | DESIGNED - | REVISED - |
| pw:\IL\084EBIDINTEG\illinois.gov\PWIDOT\Documents\IDOT Offices\District 8\Projects\0876\DRAWING\DATA\EA0\Sheets\0876D23-sht-sign.dwg | | DRAWN - | REVISED - |
| | PLOT SCALE = 100.000' / in. | CHECKED - | REVISED - |
| | PLOT DATE = 2/13/2018 | DATE - | REVISED - |

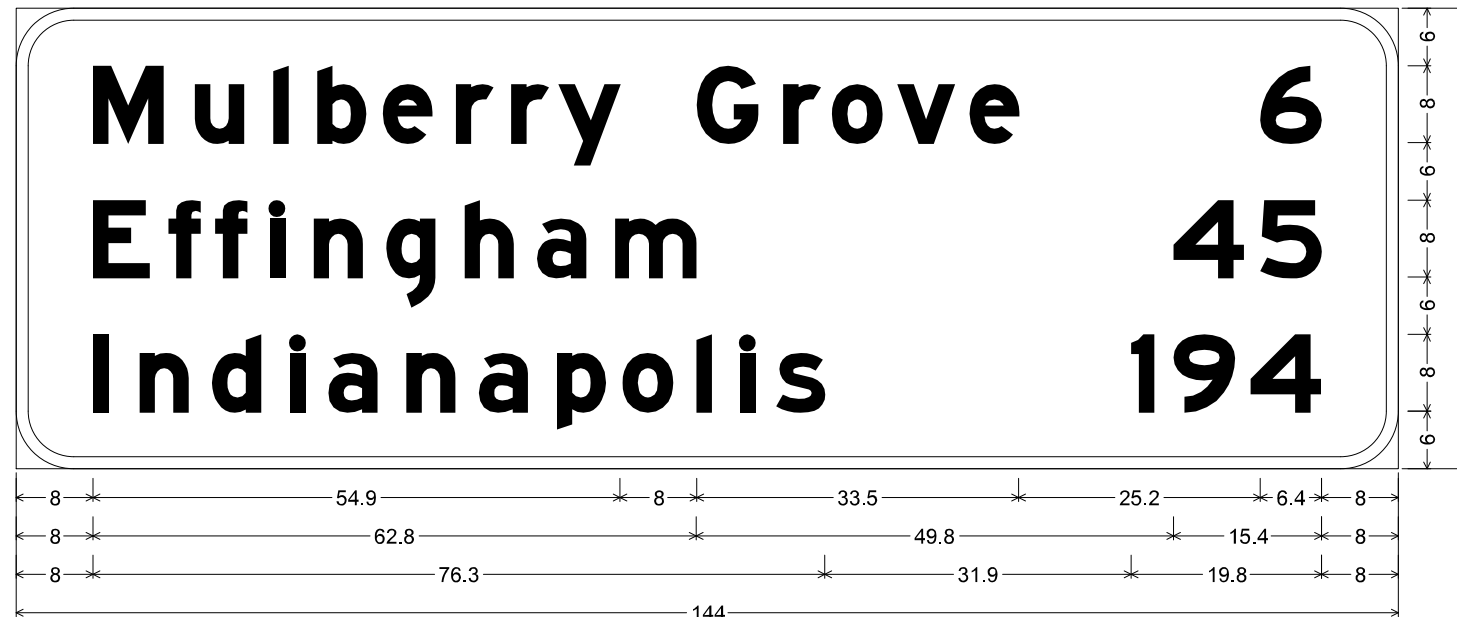
STATE OF ILLINOIS
 DEPARTMENT OF TRANSPORTATION

SIGN PANEL DETAILS

SCALE: _____ SHEET NO. ____ OF ____ SHEETS STA. _____ TO STA. _____

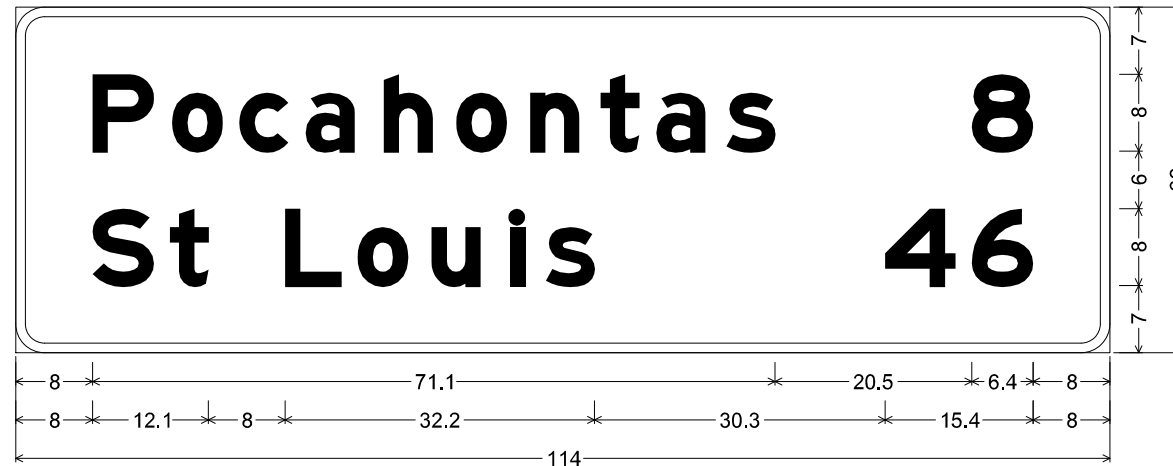
| F.A.I. RTE. | SECTION | COUNTY | TOTAL SHEETS | SHEET NO. |
|---|---------------|--------|--------------|-----------|
| 70 | 3-(2,3,4)RS-1 | BOND | 236 | 216 |
| CONTRACT NO. 76D23 | | | | |
| FED. ROAD DIST. NO. _ [ILLINOIS] FED. AID PROJECT | | | | |

EASTBOUND STATION 2696+46



| | | | | | | | | | | | | | | | | | | | | | | | | | | | | | | |
|-----|-----|-----|-----|-----|-----|-----|-----|-----|-----|-----|-----|-----|-----|-----|-----|-----|-----|------|-----|-----|-----|-----|-----|------|-----|------|-----|-----|-----|-----|
| M | u | l | b | e | r | r | y | G | r | o | v | e | 6 | | | | | | | | | | | | | | | | | |
| 8.0 | 7.4 | 3.2 | 5.1 | 3.1 | 1.5 | 3.1 | 5.1 | 1.7 | 5.1 | 2.5 | 3.9 | 1.9 | 3.9 | 1.0 | 6.4 | 8.0 | 6.4 | 2.6 | 3.9 | 1.2 | 5.2 | 1.6 | 6.0 | 1.5 | 5.1 | 25.2 | 6.4 | 8.0 | | |
| E | f | f | i | n | g | h | a | m | 4 | 5 | | | | | | | | | | | | | | | | | | | | |
| 8.0 | 5.9 | 2.0 | 3.2 | 1.6 | 3.3 | 2.4 | 1.5 | 3.1 | 5.1 | 2.5 | 5.1 | 3.0 | 5.1 | 2.5 | 5.0 | 3.1 | 8.4 | 49.8 | 7.4 | 1.6 | 6.4 | 8.0 | | | | | | | | |
| I | n | d | i | a | n | a | p | o | i | s | 1 | 9 | 4 | | | | | | | | | | | | | | | | | |
| 8.0 | 1.6 | 3.2 | 5.1 | 2.5 | 5.1 | 3.1 | 1.5 | 2.4 | 5.1 | 3.1 | 5.1 | 2.4 | 5.1 | 3.0 | 5.1 | 1.8 | 5.2 | 2.5 | 1.5 | 3.0 | 1.5 | 2.3 | 5.1 | 31.9 | 2.3 | 2.1 | 6.4 | 1.6 | 7.4 | 8.0 |

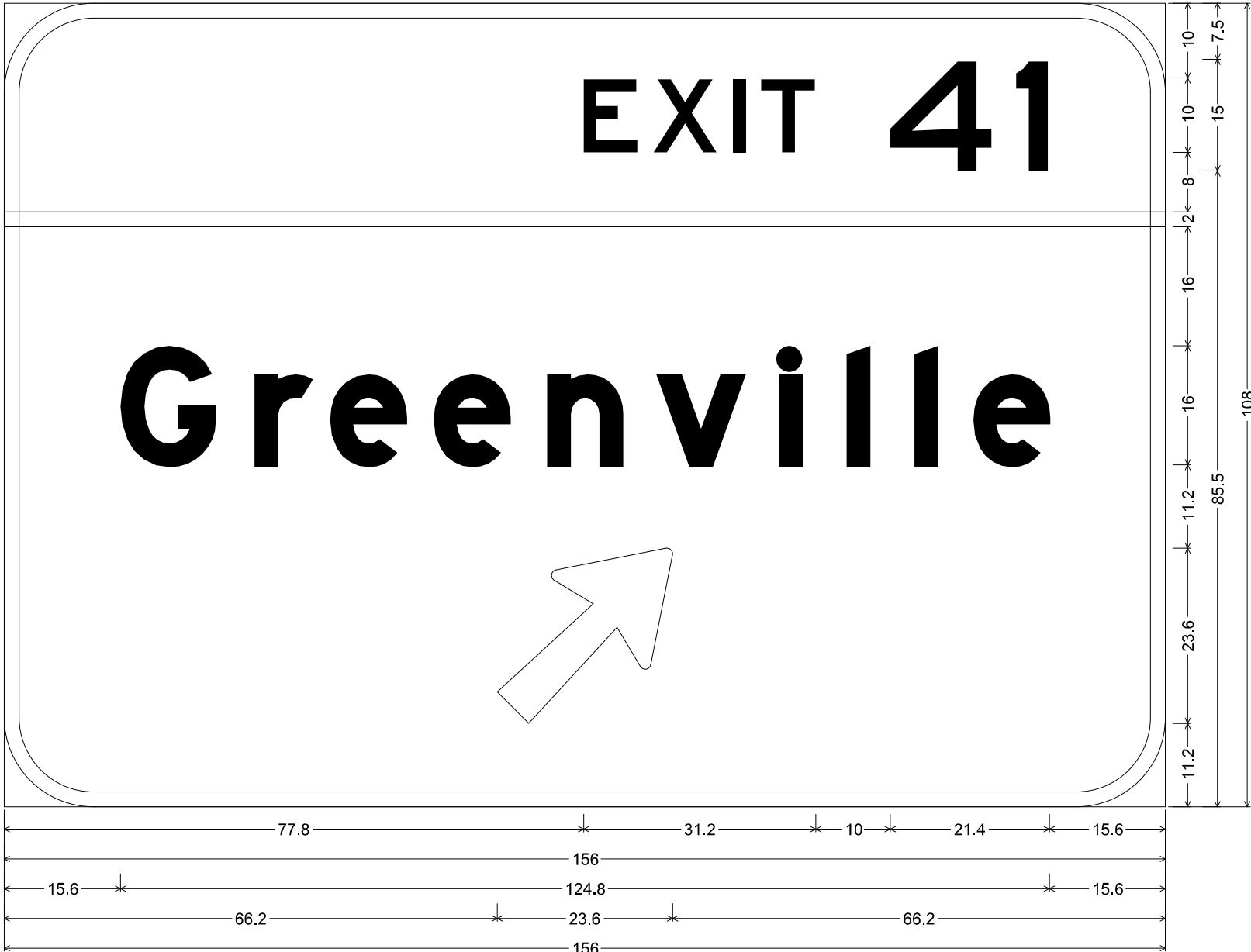
WESTBOUND STATION 2352+45



3.0" Radius, 1.0" Border, White on Green;
 [Pocahontas] E Mod; [St Louis] E Mod; [8] E Mod; [46] E Mod;
 Table of widths and spaces.

| | | | | | | | | | | | | | | | | | | | | | | |
|-----|-----|-----|-----|-----|-----|-----|-----|-----|-----|-----|-----|-----|-----|------|-----|-----|-----|-----|-----|------|-----|-----|
| P | o | c | a | h | o | n | t | a | s | 8 | | | | | | | | | | | | |
| 8.0 | 6.4 | 1.9 | 5.2 | 1.8 | 5.1 | 1.8 | 5.1 | 3.0 | 5.1 | 2.5 | 5.2 | 2.5 | 5.1 | 2.2 | 4.0 | 1.8 | 5.1 | 2.3 | 5.0 | 20.5 | 6.4 | 8.0 |
| S | t | L | o | u | i | s | 4 | 6 | | | | | | | | | | | | | | |
| 8.0 | 6.4 | 1.7 | 4.0 | 8.0 | 5.9 | 1.6 | 5.3 | 2.4 | 5.1 | 3.1 | 1.5 | 2.2 | 5.1 | 30.3 | 7.4 | 1.6 | 6.4 | 8.0 | | | | |

WESTBOUND STATION 2404+50



12.0" Radius, 2.0" Border, White on Green;
 [EXIT 41] E; [Greenville] E Mod; Arrow 133 - 30.0° 45°;
 Table of widths and spaces.

| | | | | | | | | | | | | | | | | | | | | | | | | | | | | |
|------|---|-------|------|---|-----|-----|---|------|-----|---|------|------|---|------|-----|---|------|------|---|-----|-----|-----|-----|-----|-----|---|------|------|
| 77.8 | E | 7.4 | 2.0 | X | 8.6 | 2.1 | I | 1.7 | 2.1 | T | 7.3 | 10.0 | 4 | 13.9 | 3.0 | 1 | 4.5 | 15.6 | | | | | | | | | | |
| -0.0 | | 156.0 | 0.0 | | | | | | | | | | | | | | | | | | | | | | | | | |
| 15.6 | G | 12.8 | 5.2 | r | 7.8 | 2.4 | e | 10.2 | 3.7 | e | 10.2 | 5.0 | n | 10.2 | 4.5 | v | 11.9 | 4.5 | i | 3.0 | 6.2 | 3.0 | 6.1 | 3.0 | 4.9 | e | 10.2 | 15.6 |
| 66.2 | | 23.6 | 66.2 | | | | | | | | | | | | | | | | | | | | | | | | | |

WESTBOUND STATION 2424+68



12.0" Radius, 2.0" Border, White on Green;
 [EXIT 41] E; [Greenville] E Mod; [1/2 MILE] E Mod;
 Table of widths and spaces.

| | | | | | | | |
|------|----------|----------|----------|----------|----------|----------|------|
| | E | X | I | T | 4 | 1 | |
| 77.8 | 7.4 | 2.0 | 8.6 | 2.1 | 1.7 | 2.1 | 7.3 |
| | | | | | 10.0 | 13.9 | 3.0 |
| | | | | | | 4.5 | 15.6 |

| | | |
|------|-------|-----|
| -0.0 | 156.0 | 0.0 |
|------|-------|-----|

| | | | | | | | | | | | |
|------|----------|----------|----------|----------|----------|----------|----------|----------|----------|----------|------|
| | G | r | e | e | n | v | i | l | l | e | |
| 15.6 | 12.8 | 5.2 | 7.8 | 2.4 | 10.2 | 3.7 | 10.2 | 5.0 | 10.2 | 4.5 | 11.9 |
| | | | | | | | 4.5 | 3.0 | 6.2 | 3.0 | 6.1 |
| | | | | | | | | 3.0 | 4.9 | 10.2 | 15.6 |

| | | | | | | |
|------|------------|----------|----------|----------|----------|------|
| | 1/2 | M | I | L | E | |
| 45.9 | 20.9 | 10.0 | 9.3 | 2.5 | 2.0 | 2.6 |
| | | | | | 7.4 | 2.1 |
| | | | | | 7.4 | 45.9 |

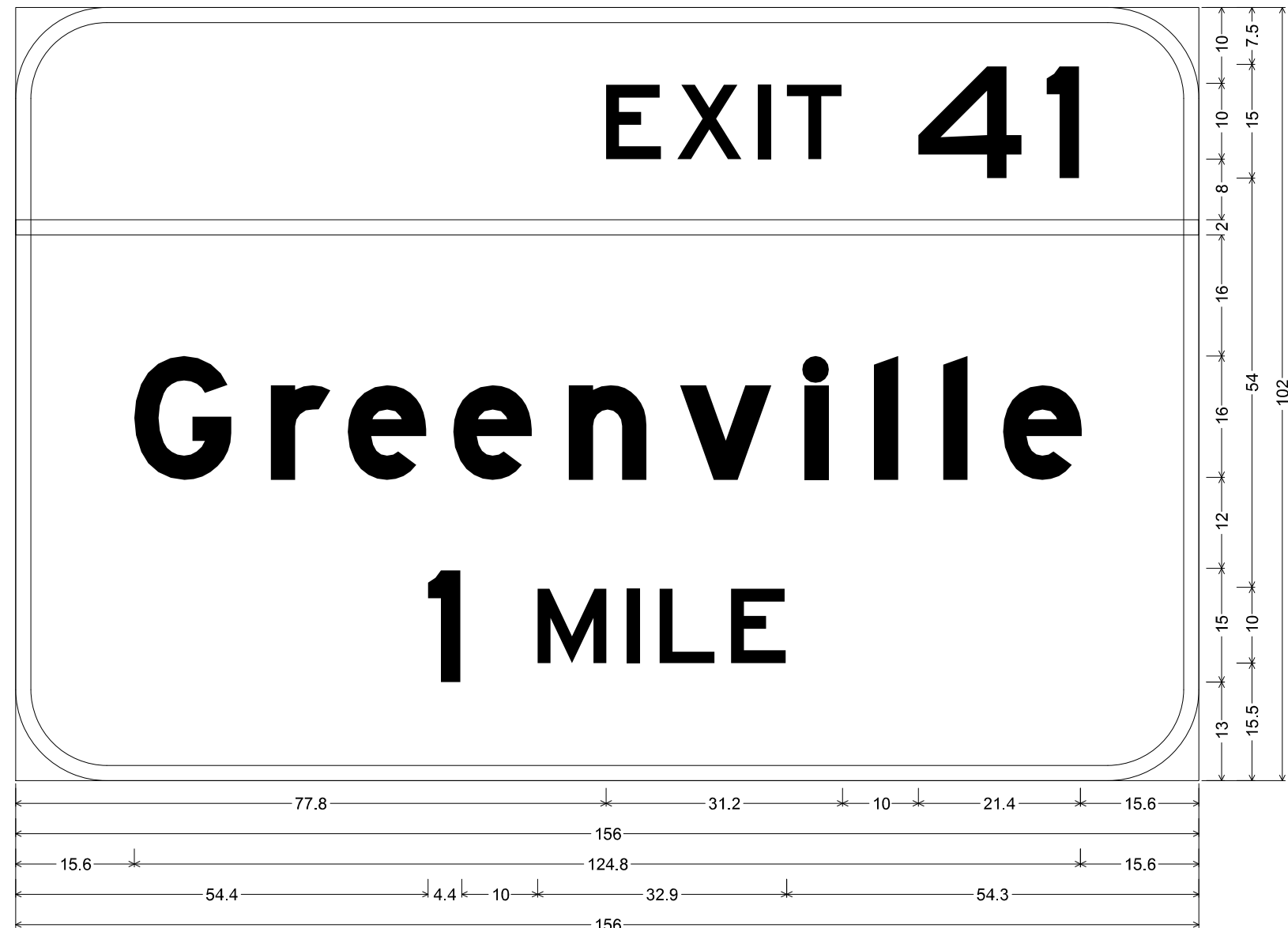
| | | | |
|---|--------------------|------------|-----------|
| FILE NAME = | USER NAME = bergmd | DESIGNED - | REVISED - |
| pw:\IL084EBIDINTEG.illinois.gov\PWIDOT\Documents\IDOT Offices\District 8\Projects\0876\DRAWING\DATA\EA0\Sheets\D876D23-sht-sign.dwg | | CHECKED - | REVISED - |
| | | DATE - | REVISED - |
| | | | |

STATE OF ILLINOIS
 DEPARTMENT OF TRANSPORTATION

| | | | |
|--------------------|-------------------------------|------------|---------------|
| SIGN PANEL DETAILS | | | |
| SCALE: _____ | SHEET NO. ____ OF ____ SHEETS | STA. _____ | TO STA. _____ |

| | | | | |
|---|---------------|--------|--------------|-----------|
| F.A.I. RTE. | SECTION | COUNTY | TOTAL SHEETS | SHEET NO. |
| 70 | 3-(2,3,4)RS-1 | BOND | 236 | 220 |
| CONTRACT NO. 76D23 | | | | |
| FED. ROAD DIST. NO. _ ILLINOIS FED. AID PROJECT | | | | |

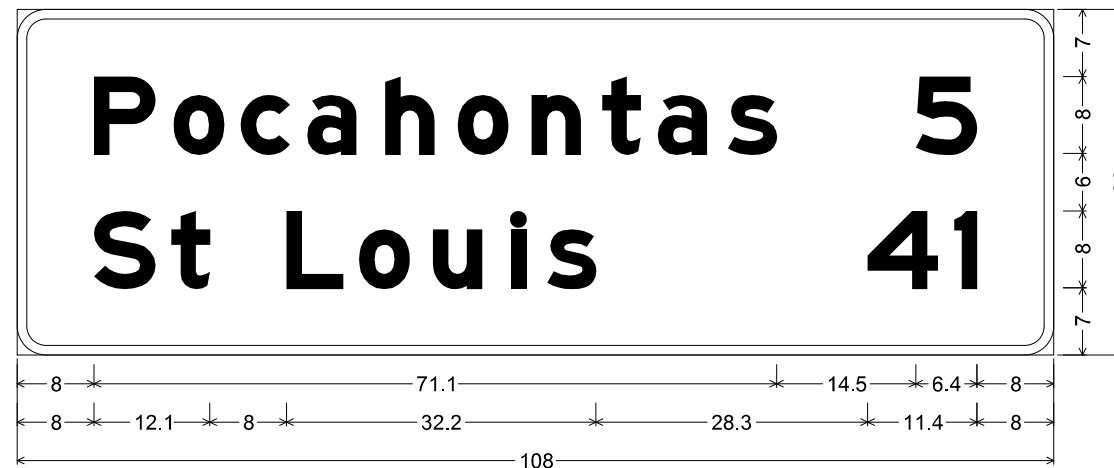
WESTBOUND STATION 2450+65



12.0" Radius, 2.0" Border, White on Green;
 [EXIT 41] E; [Greenville] E Mod; [1 MILE] E;
 Table of widths and spaces.

| | | | | | | | | | | | | | | | | | | | | | | | | | | | | | | |
|------|---|-------|------|---|-----|-----|---|------|-----|---|------|------|---|------|------|---|------|------|---|-----|-----|---|-----|-----|---|-----|-----|---|------|------|
| 77.8 | E | 7.4 | 2.0 | X | 8.6 | 2.1 | I | 1.7 | 2.1 | T | 7.3 | 10.0 | 4 | 13.9 | 3.0 | 1 | 4.5 | 15.6 | | | | | | | | | | | | |
| -0.0 | | 156.0 | 0.0 | | | | | | | | | | | | | | | | | | | | | | | | | | | |
| 15.6 | G | 12.8 | 5.2 | r | 7.8 | 2.4 | e | 10.2 | 3.7 | e | 10.2 | 5.0 | n | 10.2 | 4.5 | v | 11.9 | 4.5 | i | 3.0 | 6.2 | l | 3.0 | 6.1 | l | 3.0 | 4.9 | e | 10.2 | 15.6 |
| 54.4 | 1 | 4.4 | 10.0 | M | 9.2 | 2.6 | l | 1.7 | 2.6 | L | 7.4 | 2.0 | E | 7.4 | 54.3 | | | | | | | | | | | | | | | |

WESTBOUND STATION 2583+65



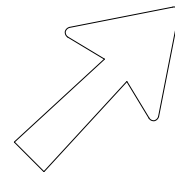
3.0" Radius, 1.0" Border, White on Green;
 [Pocahontas] E Mod; [St Louis] E Mod; [5] E Mod; [41] E Mod;
 Table of widths and spaces.

| | | | | | | | | | | | | | | | | | | | | | | |
|-----|----------|-----|----------|-----|----------|-----|----------|-----|----------|-----|----------|-----|----------|------|----------|-----|----------|-----|----------|------|----------|-----|
| | P | | o | | c | | a | | h | | o | | n | | t | | a | | s | | 5 | |
| 8.0 | 6.4 | 1.9 | 5.2 | 1.8 | 5.1 | 1.8 | 5.1 | 3.0 | 5.1 | 2.5 | 5.2 | 2.5 | 5.1 | 2.2 | 4.0 | 1.8 | 5.1 | 2.3 | 5.0 | 14.5 | 6.4 | 8.0 |
| | S | | t | | L | | o | | u | | i | | s | | 4 | | 1 | | | | | |
| 8.0 | 6.4 | 1.7 | 4.0 | 8.0 | 5.9 | 1.6 | 5.3 | 2.4 | 5.1 | 3.1 | 1.5 | 2.2 | 5.1 | 28.3 | 7.4 | 1.6 | 2.4 | 8.0 | | | | |

EXIT 45

ILLINOIS
127

Greenville Carlyle



WESTBOUND STATION 2650+83

WB



12.0" Radius, 2.0" Border, White on Green;
[EXIT 45] E; [Greenville] E Mod; [Carlyle] E Mod; Arrow 133 - 30.0" 45°;
Table of widths and spaces.

| | | | | | | | | | | | | | | | | | | | | | | | | | | | | | | |
|------|---|-------|------|---|------|-----|---|------|-----|-----|------|------|---|------|-----|---|------|------|---|------|------|---|-----|-----|---|-----|-----|---|------|------|
| 70.3 | E | 7.4 | 2.0 | X | 8.6 | 2.1 | I | 1.7 | T | 2.1 | 7.3 | 10.0 | 4 | 13.9 | 3.0 | 5 | 12.0 | 15.6 | | | | | | | | | | | | |
| -0.0 | | 156.0 | 0.0 | | | | | | | | | | | | | | | | | | | | | | | | | | | |
| 55.5 | | 45.0 | 55.5 | | | | | | | | | | | | | | | | | | | | | | | | | | | |
| 15.6 | G | 12.8 | 5.2 | r | 7.8 | 2.4 | e | 10.2 | 3.7 | e | 10.2 | 5.0 | n | 10.2 | 4.5 | v | 11.9 | 4.5 | i | 3.0 | 6.2 | i | 3.0 | 6.1 | i | 3.0 | 4.9 | e | 10.2 | 15.6 |
| 34.1 | C | 12.8 | 4.2 | a | 10.2 | 6.1 | r | 7.8 | 3.7 | i | 3.0 | 4.5 | y | 12.9 | 4.5 | i | 3.0 | 4.9 | e | 10.2 | 34.1 | | | | | | | | | |
| 66.2 | | 23.6 | 66.2 | | | | | | | | | | | | | | | | | | | | | | | | | | | |

| | | | |
|--|--------------------|------------|-----------|
| FILE NAME = | USER NAME = bergmd | DESIGNED - | REVISED - |
| pw:\IL084EBIDINTEG.illinois.gov\PIDOT\Documents\IDOT Offices\District 8\Projects\0876\DRAWING\DATA\EA0\Sheets\D876D23-sht-sign.doc | | CHECKED - | REVISED - |
| | | DATE - | REVISED - |
| | | | |

STATE OF ILLINOIS
DEPARTMENT OF TRANSPORTATION

SIGN PANEL DETAILS

SCALE: _____ SHEET NO. ___ OF ___ SHEETS STA. _____ TO STA. _____

| F.A.I. RTE. | SECTION | COUNTY | TOTAL SHEETS | SHEET NO. |
|---|---------------|--------|--------------|-----------|
| 70 | 3-(2,3,4)RS-1 | BOND | 236 | 224 |
| CONTRACT NO. 76D23 | | | | |
| FED. ROAD DIST. NO. _ [ILLINOIS] FED. AID PROJECT | | | | |



WESTBOUND STATION
2670+65

12.0" Radius, 2.0" Border, White on Green;
[EXIT 45] E; [Greenville] E Mod; [Carlyle] E Mod; [1/2 MILE] E;

Table of widths and spaces.

| | | | | | | | | | | | | | | | | | | | | | | | | | | | | | | |
|------|-----|------|------|---|-------|------|---|------|-----|---|------|------|---|------|------|---|------|------|---|------|------|---|-----|-----|---|-----|-----|---|------|------|
| 70.3 | E | 7.4 | 2.0 | X | 8.6 | 2.1 | I | 1.7 | 2.1 | T | 7.3 | 10.0 | 4 | 13.9 | 3.0 | 5 | 12.0 | 15.6 | | | | | | | | | | | | |
| -0.0 | | | | | 156.0 | 0.0 | | | | | | | | | | | | | | | | | | | | | | | | |
| 55.5 | | | | | 45.0 | 55.5 | | | | | | | | | | | | | | | | | | | | | | | | |
| 15.6 | G | 12.8 | 5.2 | r | 7.8 | 2.4 | e | 10.2 | 3.7 | e | 10.2 | 5.0 | n | 10.2 | 4.5 | v | 11.9 | 4.5 | i | 3.0 | 6.2 | i | 3.0 | 6.1 | i | 3.0 | 4.9 | e | 10.2 | 15.6 |
| 34.1 | C | 12.8 | 4.2 | a | 10.2 | 6.1 | r | 7.8 | 3.7 | i | 3.0 | 4.5 | y | 12.9 | 4.5 | i | 3.0 | 4.9 | e | 10.2 | 34.1 | | | | | | | | | |
| 46.7 | 1/2 | 19.7 | 10.0 | M | 9.3 | 2.5 | I | 1.8 | 2.5 | L | 7.4 | 2.0 | E | 7.4 | 46.7 | | | | | | | | | | | | | | | |

| | | | |
|--|--------------------|------------|-----------|
| FILE NAME = | USER NAME = bergmd | DESIGNED - | REVISED - |
| pw:\IL084EBIDINTEG.illinois.gov\PWIDOT\Documents\IDOT Offices\District 8\Projects\0875\DRAWING\DATA\EA0\Sheets\D876D23-sht-signage | | CHECKED - | REVISED - |
| | | DATE - | REVISED - |

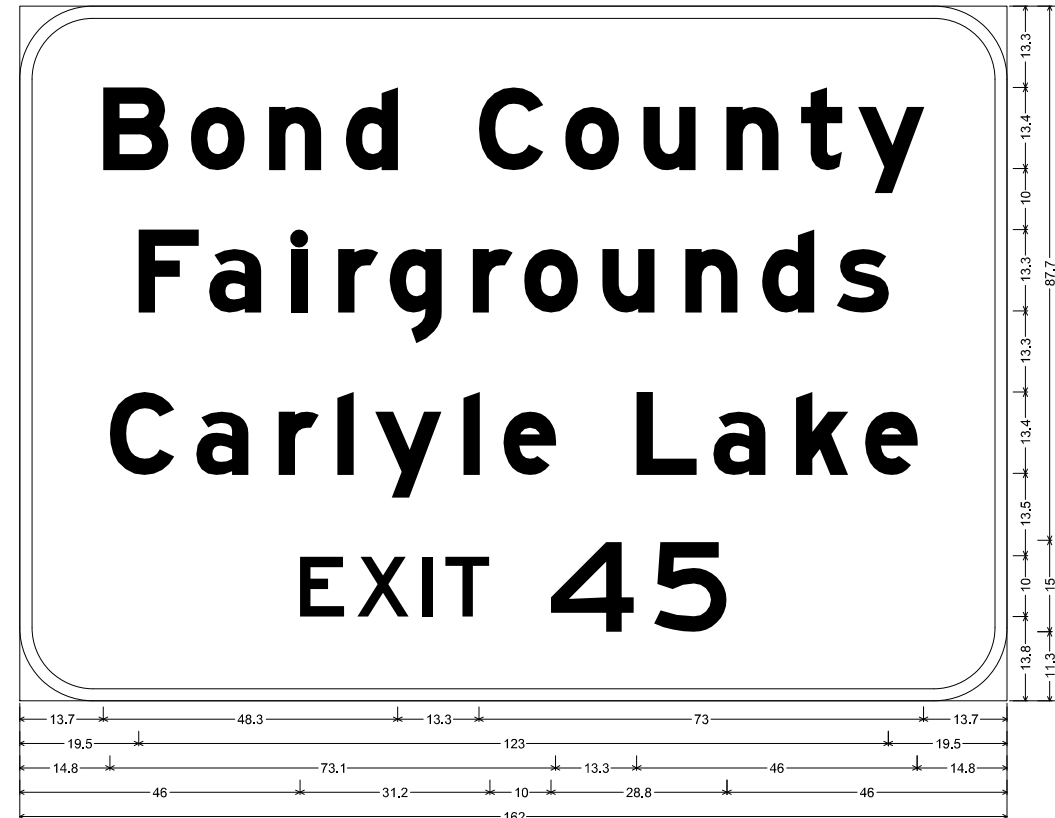
STATE OF ILLINOIS
DEPARTMENT OF TRANSPORTATION

SIGN PANEL DETAILS

SCALE: _____ SHEET NO. ___ OF ___ SHEETS STA. _____ TO STA. _____

| | | | | |
|---|---------------|--------|--------------|-----------|
| F.A.I. RTE. | SECTION | COUNTY | TOTAL SHEETS | SHEET NO. |
| 70 | 3-(2,3,4)RS-1 | BOND | 236 | 225 |
| CONTRACT NO. 76D23 | | | | |
| FED. ROAD DIST. NO. _ ILLINOIS FED. AID PROJECT | | | | |

WESTBOUND STATION 2677+85



12.0" Radius, 2.0" Border, White on Brown:
 [Bond County] E Mod; [Fairgrounds] E Mod; [Carlyle Lake] E Mod; [EXIT 45] E;

Table of widths and spaces.

| | | | | | | | | | | | | | | | | | | | | | | |
|------|------|-----|-----|-----|-----|-----|-----|------|------|-----|------|------|-----|------|-----|-----|-----|-----|------|------|-----|------|
| B | o | n | d | C | o | u | n | t | y | | | | | | | | | | | | | |
| 13.7 | 10.6 | 3.8 | 8.7 | 4.1 | 8.5 | 4.1 | 8.5 | 13.3 | 10.7 | 3.5 | 8.8 | 4.0 | 8.5 | 5.2 | 8.5 | 3.7 | 6.7 | 2.7 | 10.7 | 13.7 | | |
| F | a | i | r | g | r | o | u | n | d | s | | | | | | | | | | | | |
| 19.5 | 9.9 | 1.7 | 8.4 | 5.1 | 2.5 | 5.1 | 6.5 | 2.0 | 8.5 | 5.1 | 6.5 | 2.0 | 8.7 | 4.1 | 8.5 | 5.1 | 8.5 | 4.1 | 8.5 | 3.8 | 8.4 | 19.5 |
| C | a | r | l | y | e | L | a | k | e | | | | | | | | | | | | | |
| 14.8 | 10.6 | 3.5 | 8.5 | 5.1 | 6.5 | 3.1 | 2.5 | 3.7 | 10.8 | 3.7 | 2.5 | 4.1 | 8.5 | 13.3 | 9.9 | 2.7 | 8.5 | 5.1 | 8.4 | 2.9 | 8.5 | 14.8 |
| E | X | I | T | 4 | 5 | | | | | | | | | | | | | | | | | |
| 46.0 | 7.3 | 2.1 | 8.6 | 2.0 | 1.8 | 2.0 | 7.4 | 10.0 | 13.8 | 3.1 | 11.9 | 46.0 | | | | | | | | | | |

WESTBOUND
STATION
2696+80



12.0" Radius, 2.0" Border, White on Green;
[EXIT 45] E; [Greenville] E Mod; [Carlyle] E Mod; [1 MILE] E;
Table of widths and spaces.

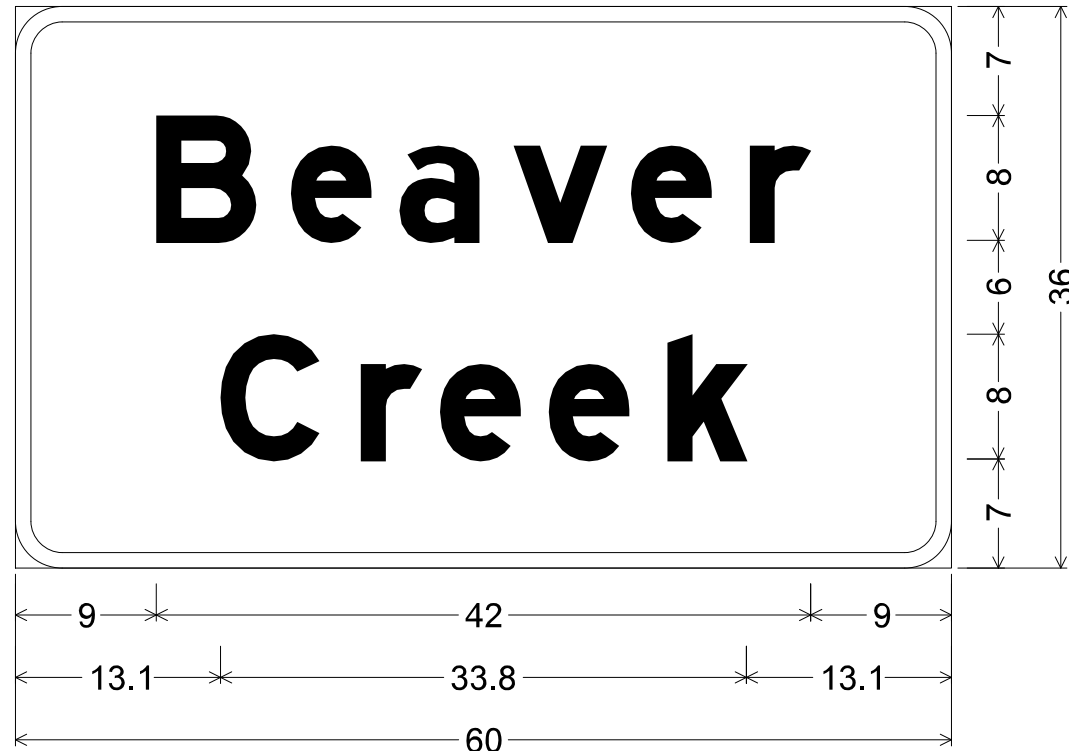
| | | | | | | | | | | | | | | | | | | | | | | | | | | | |
|------|---|-------|------|---|------|-----|---|------|-----|---|------|------|---|------|------|---|------|------|---|------|------|-----|-----|-----|-----|------|------|
| 70.3 | E | 7.4 | 2.0 | X | 8.6 | 2.1 | I | 1.7 | 2.1 | T | 7.3 | 10.0 | 4 | 13.9 | 3.0 | 5 | 12.0 | 15.6 | | | | | | | | | |
| -0.0 | - | 156.0 | 0.0 | | | | | | | | | | | | | | | | | | | | | | | | |
| 55.5 | | 45.0 | 55.5 | | | | | | | | | | | | | | | | | | | | | | | | |
| 15.6 | G | 12.8 | 5.2 | r | 7.8 | 2.4 | e | 10.2 | 3.7 | e | 10.2 | 5.0 | n | 10.2 | 4.5 | v | 11.9 | 4.5 | i | 3.0 | 6.2 | 3.0 | 6.1 | 3.0 | 4.9 | 10.2 | 15.6 |
| 34.1 | C | 12.8 | 4.2 | a | 10.2 | 6.1 | r | 7.8 | 3.7 | i | 3.0 | 4.5 | y | 12.9 | 4.5 | i | 3.0 | 4.9 | e | 10.2 | 34.1 | | | | | | |
| 54.4 | 1 | 4.4 | 10.0 | M | 9.2 | 2.6 | I | 1.7 | 2.6 | L | 7.4 | 2.0 | E | 7.4 | 54.3 | | | | | | | | | | | | |

| | | | |
|--|--------------------|----------------------------|-----------|
| FILE NAME = | USER NAME = bergmd | DESIGNED - | REVISED - |
| p:\IL\084EBIDINTEG\illinois.gov\PIDOT\Documents\IDOT Offices\District 8\Projects\0876\DRAWING\DATA\EA0\Sheets\0876D23-sht-sign.dwg | | CHECKED - | REVISED - |
| | | PLOT SCALE = 100.000 / in. | REVISED - |
| | | PLOT DATE = 2/13/2018 | REVISED - |

**STATE OF ILLINOIS
DEPARTMENT OF TRANSPORTATION**

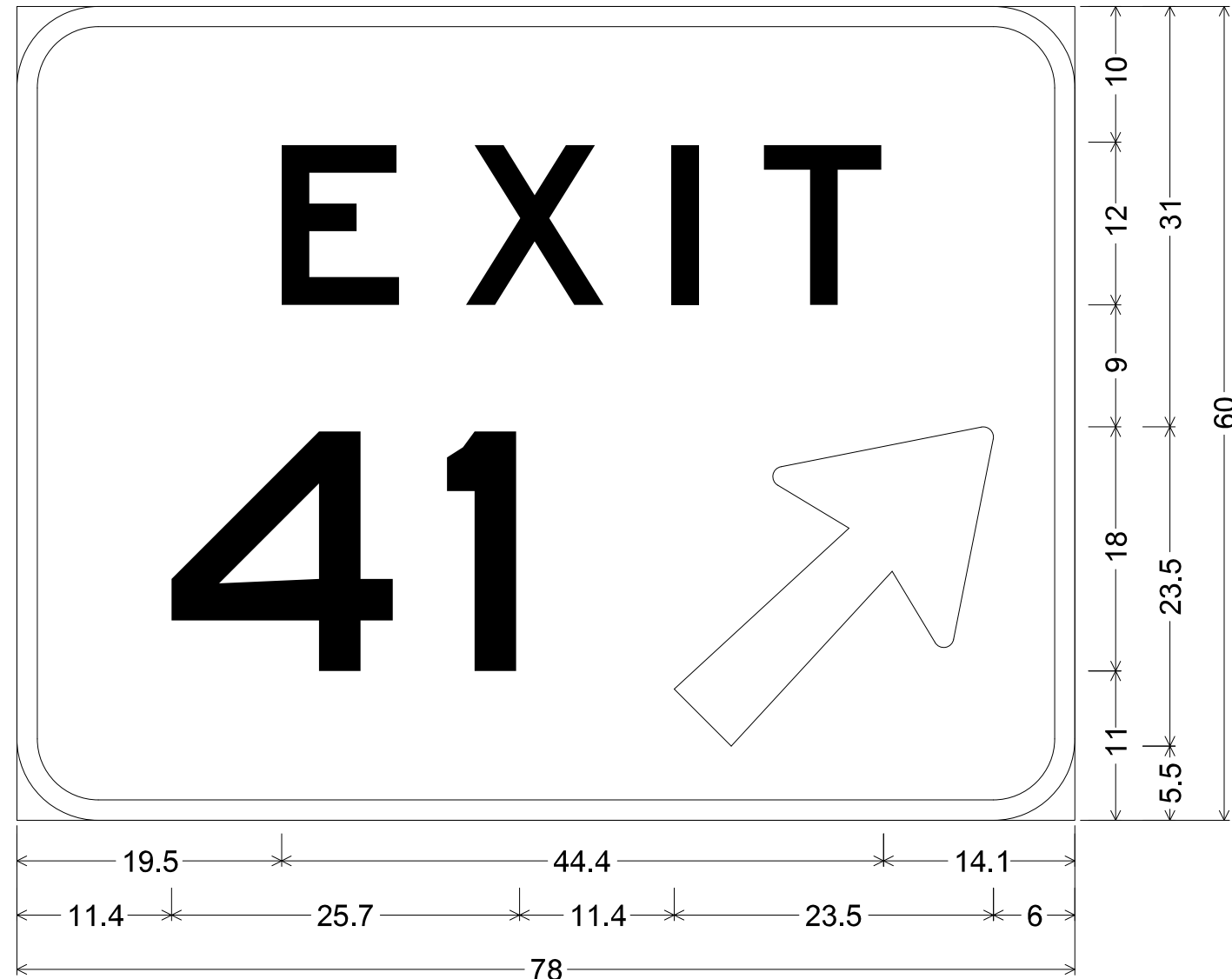
| SIGN PANEL DETAILS | | | |
|--------------------|-------------------------------|------------|---------------|
| SCALE: _____ | SHEET NO. ____ OF ____ SHEETS | STA. _____ | TO STA. _____ |

| F.A.I. RTE. | SECTION | COUNTY | TOTAL SHEETS | SHEET NO. |
|---|---------------|--------|--------------|-----------|
| 70 | 3-(2,3,4)RS-1 | BOND | 236 | 227 |
| CONTRACT NO. 76D23 | | | | |
| FED. ROAD DIST. NO. _ [ILLINOIS] FED. AID PROJECT | | | | |




3.0" Radius, 1.0" Border, White on Green;
 [Beaver] E Mod; [Creek] E Mod;
 Table of widths and spaces.

| | | | | | | | | | | | | |
|------|----------|-----|----------|-----|----------|-----|----------|-----|----------|------|----------|-----|
| | B | | e | | a | | v | | e | | r | |
| 9.0 | 6.4 | 2.3 | 5.1 | 1.8 | 5.1 | 2.2 | 6.0 | 1.6 | 5.1 | 2.5 | 3.9 | 9.0 |
| | C | | r | | e | | e | | k | | | |
| 13.1 | 6.4 | 2.6 | 3.9 | 1.2 | 5.1 | 1.9 | 5.1 | 2.5 | 5.1 | 13.1 | | |



6.0" Radius, 1.5" Border, White on Green;
 [EXIT] E specified length; [41] E; Arrow 133 - 30.0" 45°;
 Table of widths and spaces.

| | | | | | | | | | | | | |
|------|----------|------|-----|----------|------|------|---|------|-----|----------|-----|------|
| 19.5 | E | 8.8 | 4.8 | X | 10.3 | 4.8 | I | 2.1 | 4.8 | T | 8.8 | 14.1 |
| 11.4 | 4 | 16.6 | 3.7 | 1 | 5.4 | 11.4 |  | 23.5 | 6.0 | | | |

| GUIDE SIGN SCHEDULE | | | | | | | | | | | | | | | | | | | | |
|-------------------------|--------------------------------------|--|-----------------------|------------|------|----------|------|-------------------|-------|------------------------------------|---|-------------------|--|--------|------------|-----------|------------|-------------------------------|----------------------|--------------------|
| LOCATION | | DESCRIPTION | EXISTING SUPPORT TYPE | DIMENSIONS | | | | REMOVE SIGN PANEL | | REMOVE GROUND MOUNTED SIGN SUPPORT | REMOVE CONCRETE FOUNDATION - GROUND MOUNT | SIGN PANEL TYPE 3 | STRUCTURAL STEEL SIGN SUPPORT - BREAK AWAY | | | | | | CONCRETE FOUNDATIONS | REINFORCEMENT BARS |
| STATION | OFFSET TO EDGE OF NEW PANEL FROM EOP | | | EXISTING | | PROPOSED | | TY 2 | TY 3 | | | | NUMBER OF POSTS | SIZE | STUB POSTS | LEFT POST | RIGHT POST | STRUCTURAL STEEL SIGN SUPPORT | | |
| | FT | | | W | H | W | H | SF | SF | | | | | | | | | | | |
| EASTBOUND INTERSTATE 70 | | | | | | | | | | | | | | | | | | | | |
| 2320+00 | 30' | Greenville Next 2 Exits | WIDE FLANGE | 13.5 | 5.0 | 11.5 | 5.5 | | 67.5 | 2 | 2 | 63.3 | 2 | W6X15 | 2.5 | 10.3 | 10.3 | 384.00 | 1.40 | 156 |
| 2336+20 | 30' | Exit 41 Greenville 1 Mile | WIDE FLANGE | 16.0 | 6.5 | 13.0 | 8.5 | | 104.0 | 2 | 2 | 110.5 | 2 | W10X22 | 3.0 | 10.9 | 10.4 | 598.94 | 2.36 | 184 |
| 2336+20 | | Sign Tab | | 8.5 | 2.0 | | | 17.0 | | | | | | | | | | | | |
| 2363+07 | 30' | Exit 41 Greenville 1/2 Mile | WIDE FLANGE | 12.5 | 6.0 | 13.0 | 8.5 | | 75.0 | 2 | 2 | 110.5 | 2 | W10X22 | 3.0 | 10.1 | 9.6 | 565.72 | 2.36 | 184 |
| 2363+07 | | Sign Tab | | 9.0 | 2.0 | | | 18.0 | | | | | | | | | | | | |
| 2363+07 | | Marcoot Jersey Creamery | | 5.0 | 3.0 | | | 15.0 | | | | | | | | | | | | |
| 2382+27 | 30' | Exit 41 Greenville | WIDE FLANGE | 13.5 | 7.0 | 13.0 | 9.0 | | 94.5 | 2 | 2 | 117.0 | 2 | W10X22 | 3.0 | 10.7 | 11.3 | 617.39 | 2.36 | 184 |
| 2382+27 | | Sign Tab | | 9.5 | 2.0 | | | 19.0 | | | | | | | | | | | | |
| 2436+38 | 30' | IL 127/Effingham/Indianapolis | WIDE FLANGE | 17.0 | 7.0 | 10.0 | 4.0 | | 119.0 | 2 | 2 | 40.0 | 2 | W6X9 | 2.25 | 8.8 | 8.7 | 198.57 | 1.40 | 156 |
| 2583+05 | 30' | Exit 45 IL 127 Greenville Carlyle 1 Mile | WIDE FLANGE | 13.0 | 12.5 | 13.0 | 14.5 | | 162.5 | 2 | 2 | 188.5 | 2 | W14X38 | 3.5 | 11.2 | 11.7 | 1136.55 | 4.18 | 244 |
| 2583+05 | | Sign Tab | | 8.0 | 2.0 | | | 16.0 | | | | | | | | | | | | |
| 2602+48 | 30' | Bond County Fairgrounds Carlyle Lake Exit 45 | WIDE FLANGE | 14.0 | 9.5 | 13.5 | 9.5 | | 133.0 | 2 | 2 | 128.3 | 2 | W10X22 | 3.0 | 9.1 | 8.5 | 518.37 | 2.36 | 184 |
| 2609+18 | 30' | Exit 45 IL 127 Greenville Carlyle 1/2 Mile | WIDE FLANGE | 13.5 | 14.0 | 13.0 | 14.5 | | 189.0 | 2 | 2 | 188.5 | 2 | W14X30 | 3.0 | 9.5 | 9.1 | 735.97 | 3.80 | 226 |
| 2629+44 | 30' | Exit 45 IL 127 Greenville Carlyle | WIDE FLANGE | 13.5 | 14.0 | 13.0 | 15.5 | | 189.0 | 2 | 2 | 201.5 | 2 | W14X38 | 3.0 | 9.1 | 7.7 | 865.01 | 4.18 | 244 |
| 2696+46 | 30' | Mulberry Grove/Effingham/Indianapolis (E-7) | WIDE FLANGE | 21.5 | 7.5 | 12.0 | 4.0 | | 161.3 | 2 | 2 | 48.0 | 2 | W6X15 | 2.5 | 10.9 | 11.0 | 403.25 | 1.40 | 156 |
| 2352+45 | 30' | Pocahontas/St. Louis (E7) | WIDE FLANGE | 15.5 | 5.5 | 9.5 | 3.0 | | 85.3 | 2 | 2 | 28.5 | 2 | W6X15 | 2.5 | 10.0 | 9.7 | 370.91 | 1.40 | 156 |
| 2404+50 | 30' | Exit 41 Greenville | WIDE FLANGE | 13.5 | 7.0 | 13.0 | 9.0 | | 94.5 | 2 | 2 | 117.0 | 2 | W14X30 | 3.0 | 10.5 | 12.5 | 870.19 | 3.80 | 226 |
| 2404+50 | | Sign Tab | | 9.5 | 2.0 | | | 19.0 | | | | | | | | | | | | |
| 2424+68 | 30' | Exit 41 Greenville 1/2 Mile | WIDE FLANGE | 13.5 | 6.0 | 13.0 | 8.5 | | 81.0 | 2 | 2 | 110.5 | 2 | W14X30 | 3.5 | 12.9 | 14.7 | 1311.85 | 3.80 | 226 |
| 2424+68 | | Sign Tab | | 9.5 | 2.0 | | | 19.0 | 19.0 | | | | | | | | | | | |
| 2450+65 | 30' | Exit 41 Greenville 1 Mile | WIDE FLANGE | 16.0 | 6.5 | 13.0 | 8.5 | | 104.0 | 2 | 2 | 110.5 | 2 | W8X18 | 2.5 | 9.4 | 7.9 | 401.53 | 1.40 | 156 |
| 2450+65 | | Sign Tab | | 8.5 | 2.0 | | | 17.0 | | | | | | | | | | | | |
| 2583+65 | 30' | Pocahontas/St. Louis (E7) | WIDE FLANGE | 16.0 | 5.5 | 9.0 | 3.0 | | 88.0 | 2 | 2 | 27.0 | 2 | W6X15 | 2.5 | 11.6 | 11.7 | 424.79 | 1.40 | 156 |
| 2650+83 | 30' | Exit 45 IL 127 Greenville Carlyle | WIDE FLANGE | 13.5 | 13.5 | 13.0 | 15.5 | | 182.3 | 2 | 2 | 201.5 | 2 | W14X38 | 3.5 | 10.4 | 9.4 | 1015.49 | 4.18 | 244 |
| 2650+83 | | Sign Tab | | 9.0 | 2.0 | | | 18.0 | | | | | | | | | | | | |
| 2670+65 | 30' | Exit 45 IL 127 Greenville Carlyle 1/2 Mile | WIDE FLANGE | 13.5 | 12.0 | 13.0 | 14.5 | | 162.0 | 2 | 2 | 188.5 | 2 | W14X38 | 3.5 | 8.8 | 8.3 | 916.27 | 4.18 | 244 |
| 2670+65 | | Sign Tab | | 9.0 | 2.0 | | | 18.0 | | | | | | | | | | | | |
| 2677+85 | 30' | Bond County Fairgrounds Carlyle Lake Exit 45 | WIDE FLANGE | 14.5 | 9.5 | 13.5 | 9.5 | | 137.8 | 2 | 2 | 128.3 | 2 | W10X22 | 3.0 | 9.5 | 9.4 | 548.47 | 2.36 | 184 |
| 2696+80 | 30' | Exit 45 IL 127 Greenville Carlyle 1 Mile | WIDE FLANGE | 16.5 | 15.0 | 13.0 | 14.5 | | 247.5 | 2 | 2 | 188.5 | 2 | W14X38 | 3.5 | 10.6 | 11.0 | 1086.70 | 4.18 | 244 |
| TOTAL | | | | | | | | | 176.0 | 2496.0 | 38 | 38 | 2296.3 | | | | | 12969.95 | 52.50 | 3754.0 |

ALL SIGN PANELS REMOVED ARE TO BE RETURNED TO IDOT OPERATIONS. PLEASE CONTACT JEFF ABEL @ 618-346-3283 FOR ASSISTANCE.

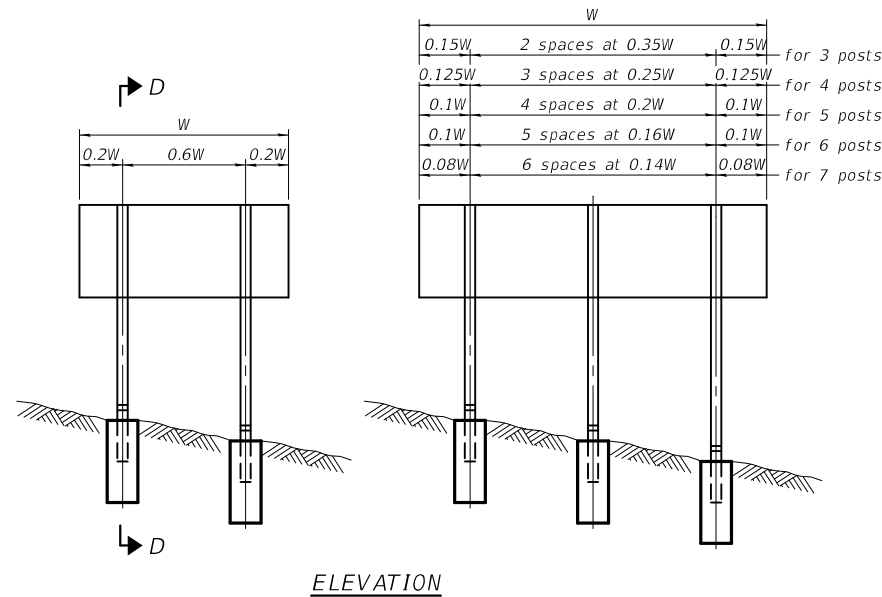
| ENHANCED MILE MARKER SIGN SCHEDULE | | | | | | | | | | | | |
|------------------------------------|-----------|-------------|-------------|---------------|------------|--------|----------|--------|-----------------------------|--|----------------------|-------------------------|
| LOCATION | | | DESCRIPTION | | DIMENSIONS | | | | REMOVE SIGN PANEL TYPE 1 | REMOVE GROUND MOUNTED SIGN SUPPORT EACH | SIGN PANEL TYPE 2 | WOOD SIGN SUPPORT FT |
| | | | | | EXISTING | | PROPOSED | | | | | |
| | | | | | WIDTH | HEIGHT | WIDTH | HEIGHT | | | | |
| STATION | DIRECTION | MILE MARKER | SIGN NUMBER | MESSAGE | FT | FT | FT | FT | SF | | SF | FT |
| 2276+00 | BOTH | 39.0 | D10-5 | I 70, MM 39.0 | 1 | 2 | 1.5 | 5 | 4 | 2 | 15 | 34 |
| 2286+52 | BOTH | 39.2 | D10-5 | I 70, MM 39.2 | | | 1.5 | 5 | | | 15 | 34 |
| 2297+03 | BOTH | 39.4 | D10-5 | I 70, MM 39.4 | | | 1.5 | 5 | | | 15 | 34 |
| 2307+55 | BOTH | 39.6 | D10-5 | I 70, MM 39.6 | | | 1.5 | 5 | | | 15 | 34 |
| 2318+88 | BOTH | 39.8 | D10-5 | I 70, MM 39.8 | | | 1.5 | 5 | | | 15 | 34 |
| 2329+40 | BOTH | 40.0 | D10-5 | I 70, MM 40.0 | 1 | 2 | 1.5 | 5 | 4 | 2 | 15 | 34 |
| 2339+91 | BOTH | 40.2 | D10-5 | I 70, MM 40.2 | | | 1.5 | 5 | | | 15 | 34 |
| 2350+43 | BOTH | 40.4 | D10-5 | I 70, MM 40.4 | | | 1.5 | 5 | | | 15 | 34 |
| 2360+94 | BOTH | 40.6 | D10-5 | I 70, MM 40.6 | | | 1.5 | 5 | | | 15 | 34 |
| 2371+46 | BOTH | 40.8 | D10-5 | I 70, MM 40.8 | | | 1.5 | 5 | | | 15 | 34 |
| 2381+97 | BOTH | 41.0 | D10-5 | I 70, MM 41.0 | 1 | 2 | 1.5 | 5 | 4 | 2 | 15 | 34 |
| 2392+49 | BOTH | 41.2 | D10-5 | I 70, MM 41.2 | | | 1.5 | 5 | | | 15 | 34 |
| 2403+00 | BOTH | 41.4 | D10-5 | I 70, MM 41.4 | | | 1.5 | 5 | | | 15 | 34 |
| 2413+52 | BOTH | 41.6 | D10-5 | I 70, MM 41.6 | | | 1.5 | 5 | | | 15 | 34 |
| 2424+03 | BOTH | 41.8 | D10-5 | I 70, MM 41.8 | | | 1.5 | 5 | | | 15 | 34 |
| 2434+55 | BOTH | 42.0 | D10-5 | I 70, MM 42.0 | 1 | 2 | 1.5 | 5 | 4 | 2 | 15 | 34 |
| 2445+06 | BOTH | 42.2 | D10-5 | I 70, MM 42.2 | | | 1.5 | 5 | | | 15 | 34 |
| 2455+58 | BOTH | 42.4 | D10-5 | I 70, MM 42.4 | | | 1.5 | 5 | | | 15 | 34 |
| 2466+09 | BOTH | 42.6 | D10-5 | I 70, MM 42.6 | | | 1.5 | 5 | | | 15 | 34 |
| 2505+89 | BOTH | 42.8 | D10-5 | I 70, MM 42.8 | | | 1.5 | 5 | | | 15 | 34 |
| 2516+41 | BOTH | 43.0 | D10-5 | I 70, MM 43.0 | 1 | 2 | 1.5 | 5 | 4 | 2 | 15 | 34 |
| 2526+92 | BOTH | 43.2 | D10-5 | I 70, MM 43.2 | | | 1.5 | 5 | | | 15 | 34 |
| 2537+44 | BOTH | 43.4 | D10-5 | I 70, MM 43.4 | | | 1.5 | 5 | | | 15 | 34 |
| 2547+95 | BOTH | 43.6 | D10-5 | I 70, MM 43.6 | | | 1.5 | 5 | | | 15 | 34 |
| 2558+47 | BOTH | 43.8 | D10-5 | I 70, MM 43.8 | | | 1.5 | 5 | | | 15 | 34 |
| 2568+98 | BOTH | 44.0 | D10-5 | I 70, MM 44.0 | 1 | 2 | 1.5 | 5 | 4 | 2 | 15 | 34 |
| 2579+50 | BOTH | 44.2 | D10-5 | I 70, MM 44.2 | | | 1.5 | 5 | | | 15 | 34 |
| 2590+01 | BOTH | 44.4 | D10-5 | I 70, MM 44.4 | | | 1.5 | 5 | | | 15 | 34 |
| 2600+53 | BOTH | 44.6 | D10-5 | I 70, MM 44.6 | | | 1.5 | 5 | | | 15 | 34 |
| 2611+04 | BOTH | 44.8 | D10-5 | I 70, MM 44.8 | | | 1.5 | 5 | | | 15 | 34 |
| 2621+56 | BOTH | 45.0 | D10-5 | I 70, MM 45.0 | 1 | 2 | 1.5 | 5 | 4 | 2 | 15 | 34 |
| 2632+07 | BOTH | 45.2 | D10-5 | I 70, MM 45.2 | | | 1.5 | 5 | | | 15 | 34 |
| 2642+59 | BOTH | 45.4 | D10-5 | I 70, MM 45.4 | | | 1.5 | 5 | | | 15 | 34 |
| 2653+10 | BOTH | 45.6 | D10-5 | I 70, MM 45.6 | | | 1.5 | 5 | | | 15 | 34 |
| 2663+62 | BOTH | 45.8 | D10-5 | I 70, MM 45.8 | | | 1.5 | 5 | | | 15 | 34 |
| 2674+13 | BOTH | 46.0 | D10-5 | I 70, MM 46.0 | 1 | 2 | 1.5 | 5 | 4 | 2 | 15 | 34 |
| 2684+65 | BOTH | 46.2 | D10-5 | I 70, MM 46.2 | | | 1.5 | 5 | | | 15 | 34 |
| 2695+16 | BOTH | 46.4 | D10-5 | I 70, MM 46.4 | | | 1.5 | 5 | | | 15 | 34 |
| 2705+68 | BOTH | 46.6 | D10-5 | I 70, MM 46.6 | | | 1.5 | 5 | | | 15 | 34 |
| 2716+19 | BOTH | 46.8 | D10-5 | I 70, MM 46.8 | | | 1.5 | 5 | | | 15 | 34 |
| 2726+71 | BOTH | 47.0 | D10-5 | I 70, MM 47.0 | 1 | 2 | 1.5 | 5 | 4 | 2 | 15 | 34 |
| 2737+22 | BOTH | 47.2 | D10-5 | I 70, MM 47.2 | | | 1.5 | 5 | | | 15 | 34 |
| 2747+74 | BOTH | 47.4 | D10-5 | I 70, MM 47.4 | | | 1.5 | 5 | | | 15 | 34 |
| 2758+25 | BOTH | 47.6 | D10-5 | I 70, MM 47.6 | | | 1.5 | 5 | | | 15 | 34 |
| 2768+77 | BOTH | 47.8 | D10-5 | I 70, MM 47.8 | | | 1.5 | 5 | | | 15 | 34 |
| 2779+28 | | | | | | | | | | | | |
| TOTAL | | | | | | | | | 36 | 18 | 675 | 1530 |

ALL SIGN PANELS REMOVED ARE TO BE RETURNED TO IDOT OPERATIONS. PLEASE CONTACT JEFF ABLE @ 618-346-3283 FOR ASSISTANCE.

| | | | | | | | | | | | | |
|--|--------------------|------------|-----------|---|---------------------------|-------------------------------|--------------------------|---|---------------|--------|--------------|-----------|
| FILE NAME = | USER NAME = bergmd | DESIGNED - | REVISED - | STATE OF ILLINOIS DEPARTMENT OF TRANSPORTATION | SIGN PANEL DETAILS | | | F.A.I. RTE. | SECTION | COUNTY | TOTAL SHEETS | SHEET NO. |
| pw:\IL084EBIDINTEG.illinois.gov\PIDOT\Documents\IDOT Offices\District 8\Projects\0875\DRAWING\DATA\EA0\Sheets\0875023-sht-sign.doc | | CHECKED - | REVISED - | | SCALE: _____ | SHEET NO. ____ OF ____ SHEETS | STA. _____ TO STA. _____ | 70 | 3-(2,3,4)RS-1 | BOND | 236 | 232 |
| | | DATE - | REVISED - | | | | | CONTRACT NO. 76D23 | | | | |
| | | | | | | | | FED. ROAD DIST. NO. _ ILLINOIS FED. AID PROJECT | | | | |

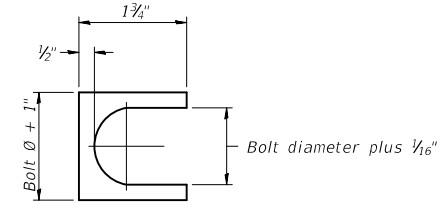
| SPECIAL STANDARD SIGN SCHEDULE | | | | | | | | | | | | |
|--------------------------------|-----------|-------------|--------------|------------|--------|----------|--------|-------------------|-------------|----------------------------|------------|-------------------|
| LOCATION | | DESCRIPTION | | DIMENSIONS | | | | REMOVE SIGN PANEL | REMOVE SIGN | REMOVE GROUND MOUNTED SIGN | SIGN PANEL | WOOD SIGN SUPPORT |
| | | | | EXISTING | | PROPOSED | | TYPE 2 | TYPE 3 | EACH | TYPE 3 | |
| | | | | WIDTH | HEIGHT | WIDTH | HEIGHT | | | | | |
| STATION | DIRECTION | SIGN NUMBER | MESSAGE | FT | FT | FT | FT | SF | SF | SF | FT | |
| 2389+37 | EB | E5-1a | EXIT 41 | 6 | 5 | 6.5 | 5 | | 30 | 2 | 32.5 | 34 |
| 2622+13 | EB | I-3 | BEAVER BREEK | 4.5 | 3 | 5 | 3 | 13.5 | 13.5 | 1 | 30 | 34 |
| 2636+50 | EB | E5-1a | EXIT 45 | 6 | 5 | 6.5 | 5 | | 30 | 2 | 65 | 34 |
| 2643+53 | WB | E5-1a | EXIT 45 | 6 | 5 | 6.5 | 5 | | 30 | 2 | 32.5 | 34 |
| 2623+76 | WB | I-3 | BEAVER BREEK | 4.5 | 3 | 5 | 3 | 13.5 | 13.5 | 1 | 30 | 34 |
| 2397+30 | WB | E5-1a | EXIT 41 | 6 | 5 | 6.5 | 5 | | 30 | 2 | 65 | 34 |
| TOTAL | | | | | | | | 27 | 147 | 8 | 255 | 204 |

ALL SIGN PANELS REMOVED ARE TO BE RETURNED TO IDOT OPERATIONS. PLEASE CONTACT JEFF ABLE @ 618-346-3283 FOR ASSISTANCE.



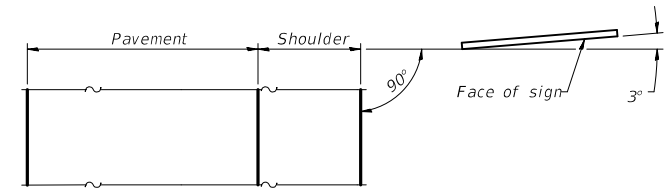
ELEVATION

| | | | |
|--------|-------------------|--------|-------------|
| 0.15W | 2 spaces at 0.35W | 0.15W | for 3 posts |
| 0.125W | 3 spaces at 0.25W | 0.125W | for 4 posts |
| 0.1W | 4 spaces at 0.2W | 0.1W | for 5 posts |
| 0.1W | 5 spaces at 0.16W | 0.1W | for 6 posts |
| 0.08W | 6 spaces at 0.14W | 0.08W | for 7 posts |

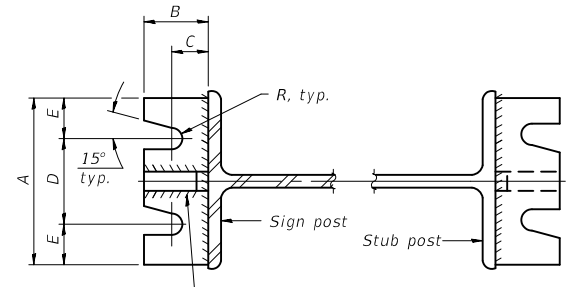


SHIM DETAIL

Furnish two 0.01" thick and two 0.03" thick stainless steel or brass (ASTM B36) shims per post.

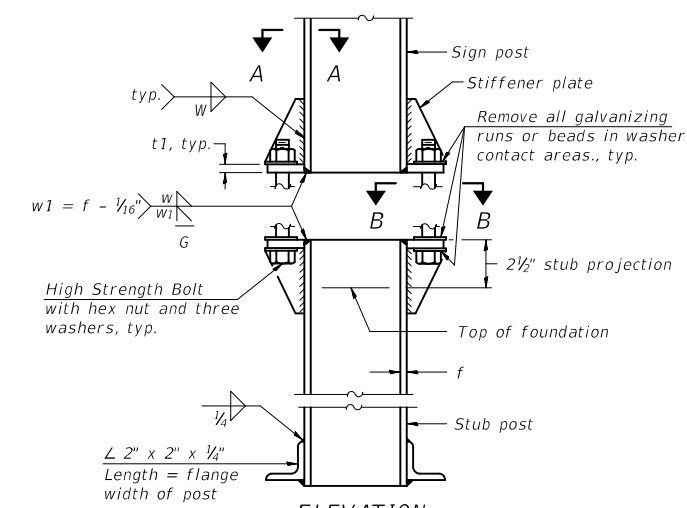


LOCATION SKETCH

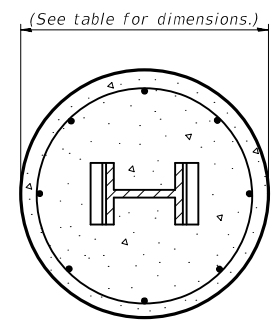


SECTION A-A

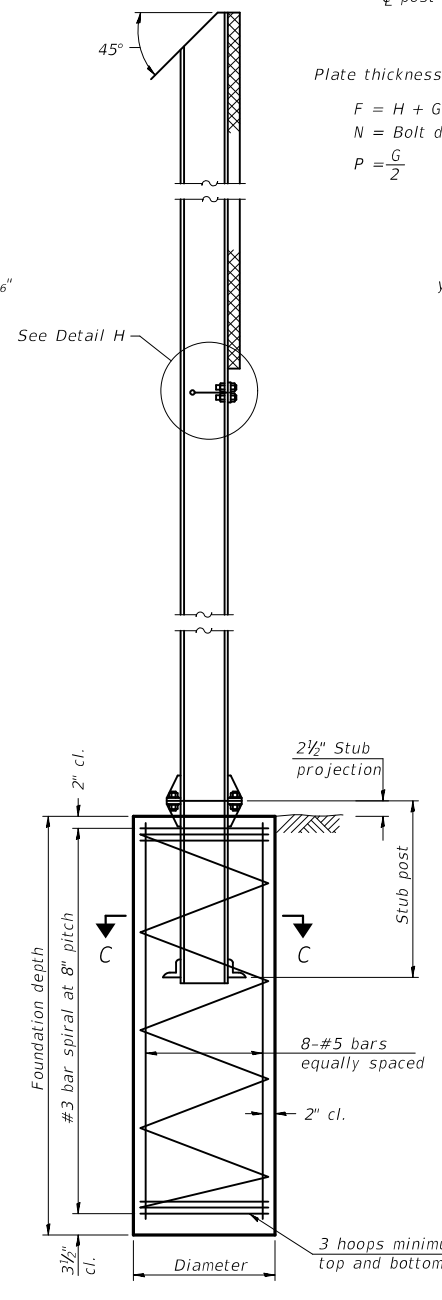
SECTION B-B



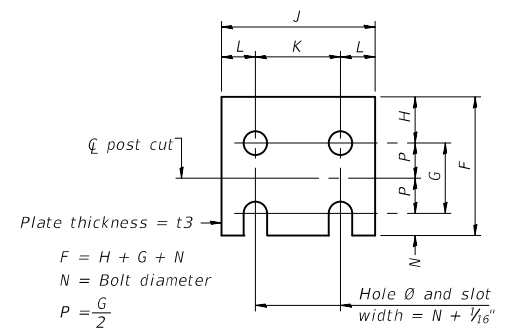
ELEVATION
SIGN POST & STUB POST



SECTION C-C

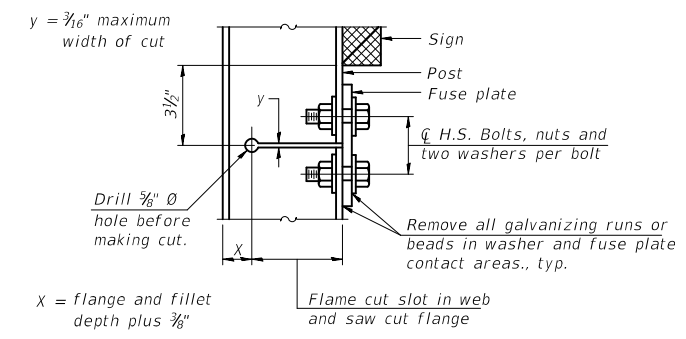


SECTION D-D

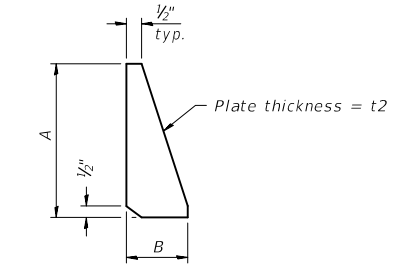


FUSE PLATE DETAIL
(Install with notches down.)

| N = Bolt Diameter | G | H |
|-------------------|--------|--------|
| 1/2" | 2" | 1 1/8" |
| 3/8" | 2 1/4" | 1 1/4" |
| 7/8" | 2 1/2" | 1 7/8" |
| 7/8" | 2 3/4" | 1 1/2" |
| 1" | 3" | 1 3/8" |
| 1 1/8" | 3 1/4" | 1 7/8" |
| 1 1/4" | 3 1/2" | 1 7/8" |



DETAIL H



STIFFENER PLATE DETAIL

GENERAL NOTES

Posts shall be plumbed by using shims with post-to-stub post connection bolts snug tight only. Final tightening of all High Strength Bolts shall be in accordance with Article 727.05 and threads at the junction of the bolt and nut shall be burred or center punched to prevent the nut from loosening.

LOADING: 80 m.p.h. wind with 30% gust factor, normal to sign.

DESIGN STRESSES:
Structural steel - 20,000 p.s.i.
Reinforcing steel - 20,000 p.s.i.
Concrete - 1,400 p.s.i.
Footing soil pressure - 2,000 p.s.f.

After fabrication, the post, fuse plate and upper 6', min. of the stub post shall be hot-dip galvanized in accordance with AASHTO M111. All bolts, nuts and washers shall be hot-dip galvanized in accordance with AASHTO M232.

Work this sheet with Base Sheet BAW-A-2.

(Sheet 1 of 2)

**BREAK-AWAY WIDE FLANGE
STEEL SIGN POST DETAILS**

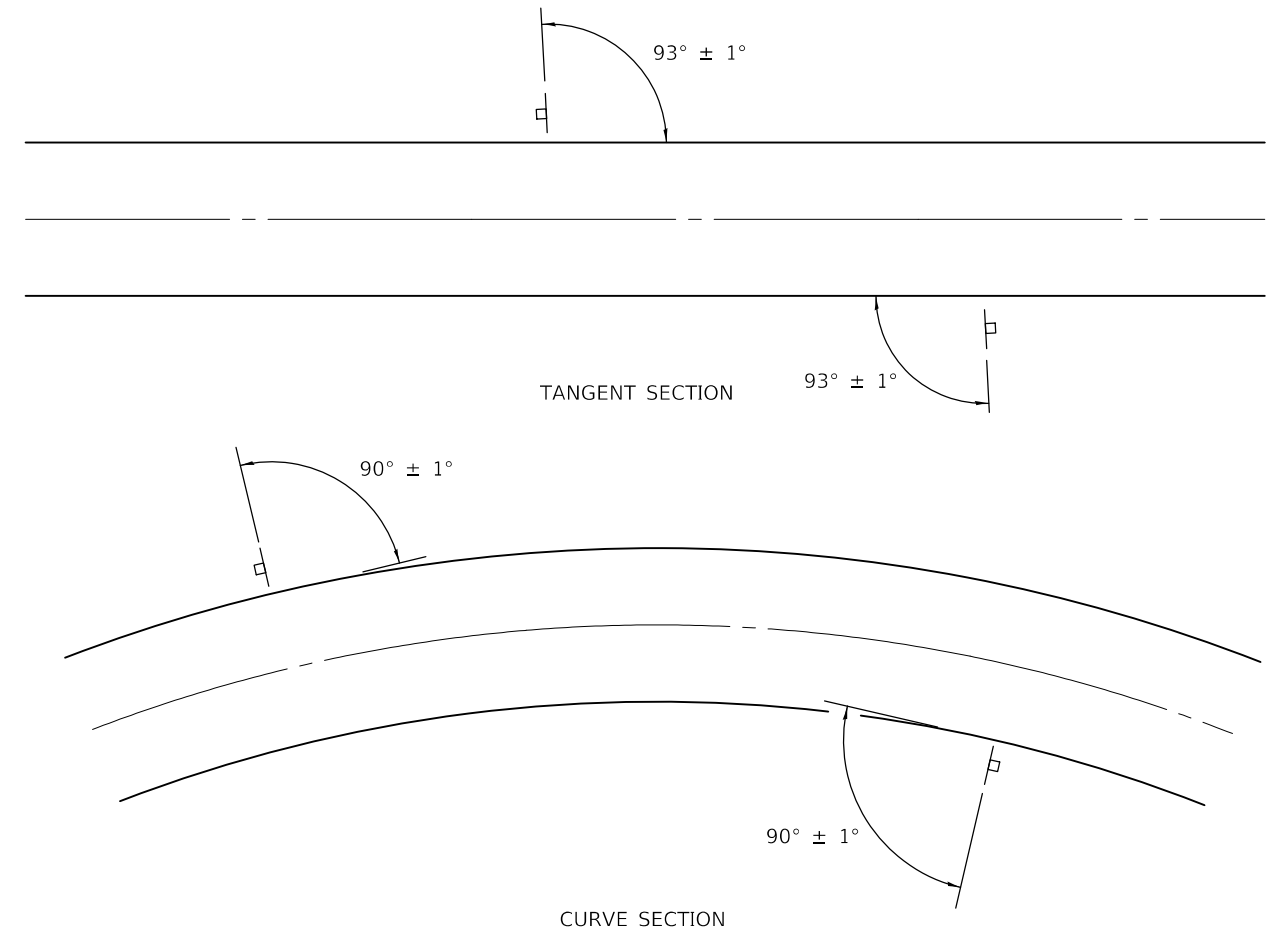
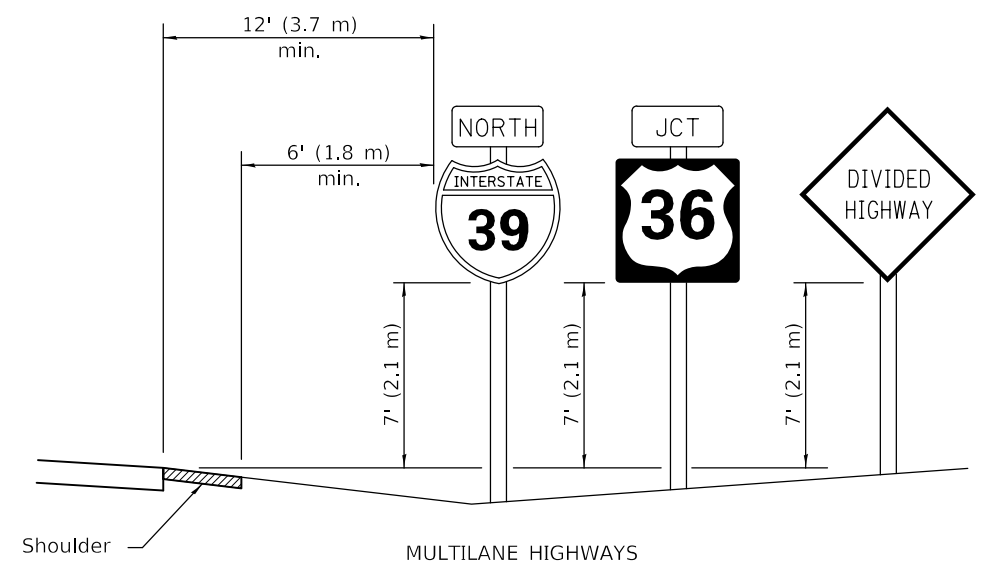
| | | | |
|--|--------------------|-------------|-----------|
| FILE NAME = | USER NAME = bergmd | DESIGNED - | REVISED - |
| pw\11084EBIDINTEG.illinois.gov\PIWIDOT\Documents\DOT Offices\District 8\Projects\0875\Drawings\EA0\Sheets\0875023-sht-signpost | | DRAWN - | REVISED - |
| PLOT SCALE = 100.000' / in. | CHECKED - | REVISIONS - | |
| PLOT DATE = 2/13/2018 | DATE - | | |

**STATE OF ILLINOIS
DEPARTMENT OF TRANSPORTATION**

SIGN PANEL DETAILS

SCALE: _____ SHEET NO. ____ OF ____ SHEETS STA. _____ TO STA. _____

| | | | | |
|---|---------------|--------|--------------|-----------|
| F.A.I. RE. | SECTION | COUNTY | TOTAL SHEETS | SHEET NO. |
| 70 | 3-(2,3,4)RS-1 | BOND | 236 | 234 |
| CONTRACT NO. 76D23 | | | | |
| FED. ROAD DIST. NO. [] ILLINOIS FED. AID PROJECT | | | | |



GROUND MOUNT SIGN POSITIONING

| | | | |
|--|--------------------|------------|-----------|
| FILE NAME = | USER NAME = bergmd | DESIGNED - | REVISED - |
| pw:\IL084EBIDINTEG.illinois.gov\PWIDOT\Documents\IDOT Offices\District 8\Projects\0876023\DRAWING\DATA\EA0\Sheets\D876023-sht-sign.doc | | REVISED - | REVISED - |
| | | REVISED - | REVISED - |
| | | REVISED - | REVISED - |

**STATE OF ILLINOIS
DEPARTMENT OF TRANSPORTATION**

| SIGN PANEL DETAILS | | | |
|--------------------|-----------------------------|--------------------------|--|
| SCALE: _____ | SHEET NO. ___ OF ___ SHEETS | STA. _____ TO STA. _____ | |

| F.A.I. RTE. | SECTION | COUNTY | TOTAL SHEETS | SHEET NO. |
|---|---------------|--------|--------------|-----------|
| 70 | 3-(2,3,4)RS-1 | BOND | 236 | 236 |
| CONTRACT NO. 76D23 | | | | |
| FED. ROAD DIST. NO. _ ILLINOIS FED. AID PROJECT | | | | |

TYPICAL INSTALLATIONS

Signs in any area shall be erected to a uniform height above the edge of the