

STATE OF ILLINOIS  
DEPARTMENT OF TRANSPORTATION

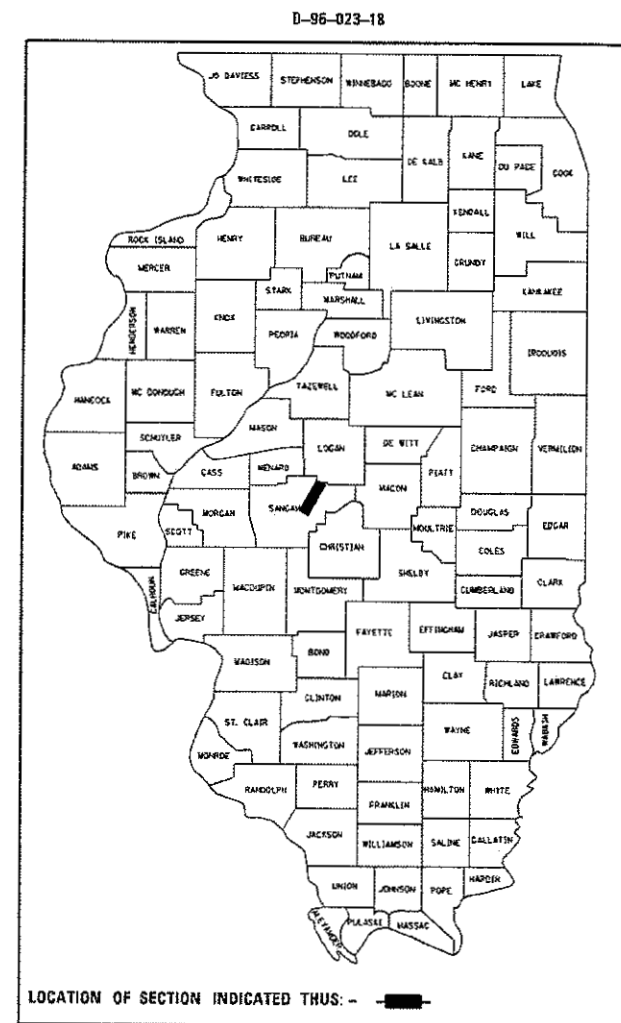
F.A.I. RTE.	SECTION	COUNTY	TOTAL SHEETS	SHEET NO.
55 5	184-1-21 Q-3	LOGAN	5	1
		ILLINOIS	CONTRACT NO. 72K39	

FOR INDEX OF SHEETS, SEE SHEET NO. 2

# PROPOSED IMPROVEMENTS

F.A.I. 55 5 (I 55 W FR RD)  
(84-1-2) Q-3  
BITUMIONOUS SURFACE TREATMENT

SANGAMON CO



FAI 55 5  
FR 29.34  
ADT=950  
SU=20  
MU=20

FAI 55 5  
FR 32.36  
ADT=10  
SU=0  
MU=0

END PROJECT PART "A"  
FAI 55 5 FR 29.34  
STA. 232+00.00

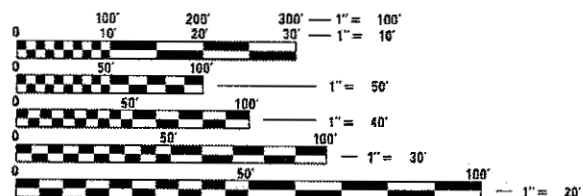
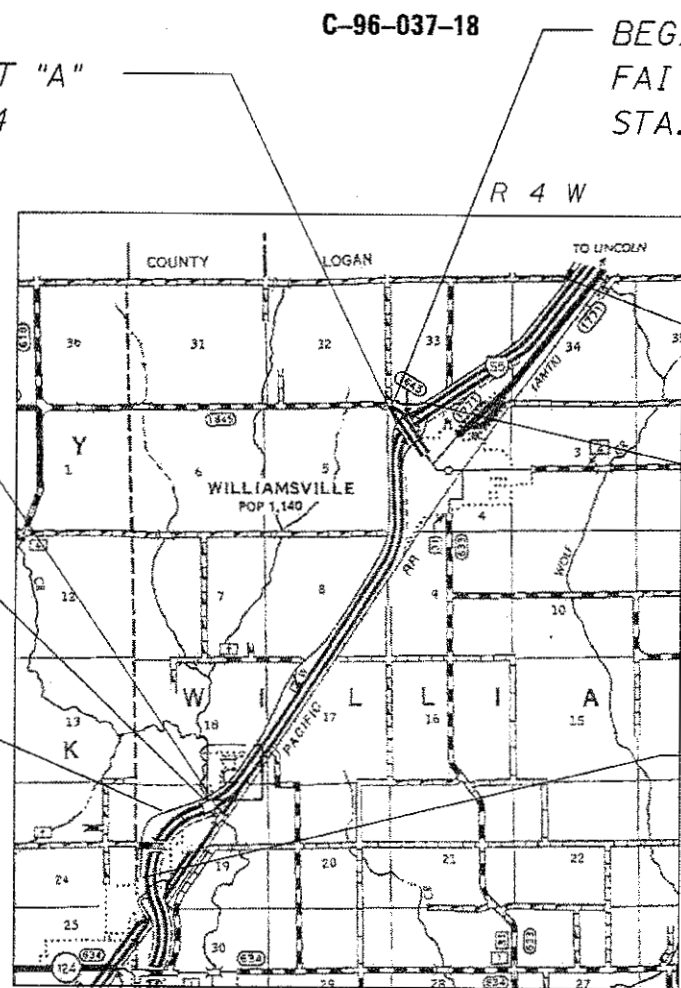
BEGIN PROJECT PART "B"  
FAI 55 5 FR 32.36  
STA. 0+10.00

END PROJECT PART "B"  
FAI 55 5 FR 32.36  
STA. 225+34.80

STA. EQ.  
16+26.54bk  
=136+57.34ah

BEGIN PROJECT - PART "A"  
FAI 55 5 FR 29.34  
STA. 138+21.53

STA. EQ.  
290+44.95bk  
=36+88.58ah  
BRIDGE OMIS.  
STA. 291+95.05  
TO 290+44.95  
STA. EQ.  
96+00.00bk  
=296+00.00ah



FULL SIZE PLANS HAVE BEEN PREPARED USING STANDARD ENGINEERING SCALES. REDUCED SIZED PLANS WILL NOT CONFORM TO STANDARD SCALES. IN MAKING MEASUREMENTS ON REDUCED PLANS, THE ABOVE SCALES MAY BE USED.

J.U.L.I.E.  
JOINT UTILITY LOCATION INFORMATION FOR EXCAVATION  
1-800-892-0123  
OR 811

PROJECT ENGINEER : MIKE IRWIN - (217)524-7765  
PROJECT MANAGER : TIM SHARP - (217)524-9160

CONTRACT NO. 72K39

NET LENGTH OF LOCATION "A" - 24,137.90 FOOT=4.572 MILES  
NET LEHGHTH OF LOCATION "B" - 10,494.00 FOOT=1.988 MILES

STATE OF ILLINOIS  
DEPARTMENT OF TRANSPORTATION

SUBMITTED Dec. 27th 2017  
Jeffrey M. Smith  
REGIONAL ENGINEER

Feb 2 2018  
[Signature]  
ENGINEER OF DESIGN AND ENVIRONMENT

Feb 2 2018  
[Signature]  
DIRECTOR OF HIGHWAYS CHIEF ENGINEER

PRINTED BY THE AUTHORITY  
OF THE STATE OF ILLINOIS

INDEX OF SHEETS

SHEET NO.	DESCRIPTION
1.	COVER SHEET
2.	INDEX OF SHEETS, STANDARDS, GENERAL NOTES & SIGNATURE
3.	SUMMARY OF QUANTITIES
4.	PROJECT LOCATION MAP
5.	PROJECT TYPICAL SECTIONS

STANDARDS

STANDARD NO.	DESCRIPTION
701001-02	OFF-ROAD OPERATIONS, 2L, 2W, MORE THAN 15' (4.5m) AWAY
701006-05	OFF-ROAD OPERATIONS, 2L, 2W, 15' (4.5m) TO 24" (600mm) FROM EDGE OF PAVEMENT
701201-04	LANE CLOSURE, 2L, 2W, DAY ONLY, FOR SPEEDS ≥ 45 MPH
701301-04	LANE CLOSURE, 2L, 2W, SHORT TERM OPERATIONS
701306-04	LANE CLOSURE, 2L, 2W, SLOW MOVING OPERATIONS DAY ONLY, FOR SPEEDS ≥ 45 MPH
701311-03	LANE CLOSURE, 2L, 2W, MOVING OPERATIONS, DAY ONLY
701901-07	TRAFFIC CONTROL DEVICES

NOTES:

SEAL COAT AGGREGATE SHALL BE CRUSHED LIMESTONE

D-6 OPERATIONS WILL PLACE PERMANENT PAVEMENT MARKINGS

UP TO 3 SWEEPINGS MAY BE REQUIRED BY A ROTARY TYPE BROOM TO REMOVE EXCESS AGGREGATE.

CONTRACTOR SHALL PLACE AGGREGATE SHOULDERS, TYPE B. PRIOR TO BITUMINOUS SURFACE TREATMENTS A1.

<b>STATE OF ILLINOIS DEPARTMENT OF TRANSPORTATION DIVISION OF HIGHWAYS DISTRICT 6</b>	
EXAMINED	<u>Dec 27<sup>th</sup></u> 20 <u>17</u>
	<u>[Signature]</u> ENGINEER OF OPERATIONS
EXAMINED	<u>Dec 14<sup>th</sup></u> 20 <u>17</u>
	<u>[Signature]</u> ENGINEER OF PROJECT IMPLEMENTATION
EXAMINED	<u>December 14</u> 20 <u>17</u>
	<u>[Signature]</u> ENGINEER OF PROGRAM DEVELOPMENT

CODE NO.	ITEM	UNIT	TOTAL QUANTITY	FAI 55 5 FR 29.34	FAI 55 5 FR 32.36
				0-01624-6018	0-01624-6018
				100% STATE	100% STATE
				SANGAMON	SANGAMON
				ROADWAY	ROADWAY
0005	0005				
				RURAL	RURAL
40300400	BITUMINOUS MATERIALS (COVER AND SEAL COAT)	TON	133	93	40
40300600	SEAL COAT AGGREGATE	TON	771	537	234
40600400	MIXTURE FOR CRACKS, JOINTS AND FLANGEWAYS	TON	8	5	3
48101200	AGGREGATE SHOULDERS, TYPE B	TON	2,630	1,833	797
67100100	MOBLIZATION	L SUM	1	0.67	0.33
70100450	TRAFFIC CONTROL AND PROTECTION, STANDARD 701201	L SUM	1	0.67	0.33
70100460	TRAFFIC CONTROL AND PROTECTION, STANDARD 701306	L SUM	1	0.67	0.33

APPLICATION RATES		
	AGGREGATE	BITUMINOUS MATERIAL
SEAL COAT	20 lb/sq yd	0.40 gal/sq yd

THE APPLICATION RATES SHOWN ABOVE MAY BE ADJUSTED BY THE ENGINEER BASED ON FIELD CONDITIONS



END PROJECT  
PART "A"  
FAI 55 5FR 29.34  
STA. 232+00.00

STA. EQ.  
290+44.95bk  
=36+88.58ah

BRIDGE OMIS.  
STA. 291+95.05  
TO 290+44.95

STA. EQ.  
96+00.00bk  
=296+00.00ah

END PROJECT  
PART "B"  
FAI 55 5FR 32.36  
STA. 225+34.80

STA. EQ.  
16+26.54bk  
=136+57.34ah  
BEGIN PROJECT  
PART "B"  
FAI 55 5 FR 32.36  
STA. 0+10.00

BEGIN PROJECT PART "A"  
FAI 55 5 FR 29.34  
STA. 138+21.53

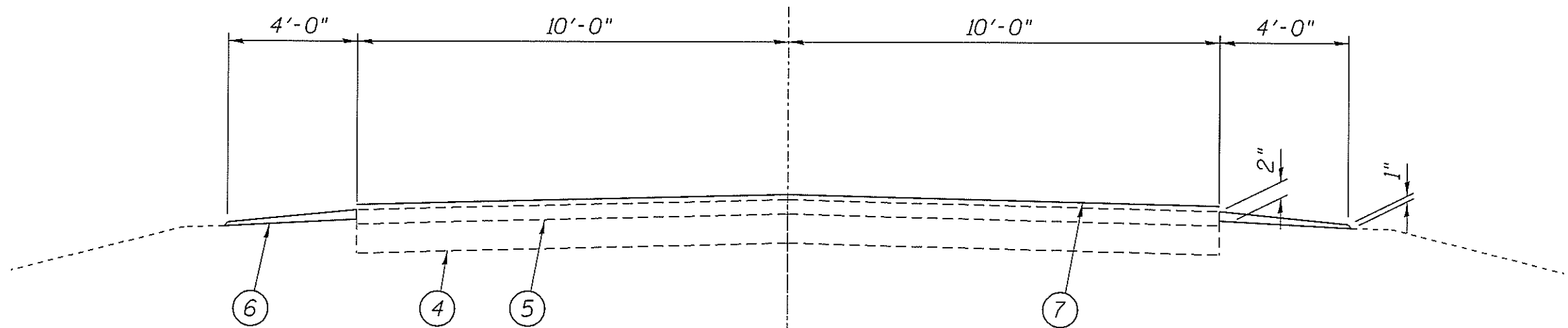
FILE NAME =	USER NAME = sharptd	DESIGNED -	REVISED -
S:\CONTRMAINT\CAD\72K39 - FAI 55 5 (1) 55	W FR RD - Sudduth to Logan Co line - A-1-PL	4087K09-shy-4-plans.dgn	REVISED -
Default	PLOT SCALE = 40,0000 / in.	CHECKED -	REVISED -
	PLOT DATE = 12/27/2017	DATE -	REVISED -

STATE OF ILLINOIS  
DEPARTMENT OF TRANSPORTATION

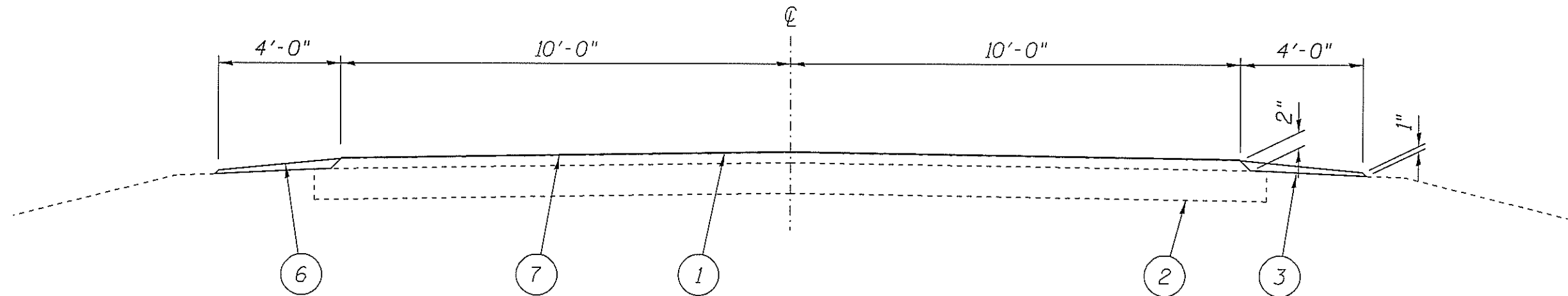
LOCATION MAP

SCALE: SHEET OF SHEETS STA. TO STA.

F.A.I. RTE.	SECTION	COUNTY	TOTAL SHEETS	SHEET NO.
55 5	(84-1-2) 0-3	SANGAMON	5	4
CONTRACT NO. 72K39			ILLINOIS FED. AID PROJECT	



LOCATION #2  
 STA. 0+50.00 TO 14+00.00



LOCATION "A"  
 FAI 55 5 29.34  
 STA. 138+21.53 TO 96+00.00  
 STA. EQ. 96+00.00bk=296+00.00ah  
 STA. 296+00.00 TO 291+95.05  
 BRIDGE OMISSION STA. 291+95.05 TO 290+44.95  
 STA. E. 290+44.95bk=36+88.58ah  
 STA. 36+88.58 TO 232+00.00

LOCATOION "B"  
 FAI 55 5 FR 32.36  
 STA. 0+10.00 TO 0+50.00  
 STA. 14+00.00 OT 16+26.54  
 STA. EQ. 16+26.54bk=136+57.34ah  
 STA. 136+57.54 TO 225+34.80

**LEGEND**

- 1- EXIST. HOT-MIX ASPHALT SURFACE
- 2- EXIST. STABILIZED BASE
- 3- EXIST. AGGREGATE SHOULDERS
- 4- EXIST. ROCK FILL 8"
- 5- EXIST. AGGREGATE SURFACE COURSE, 4"
- 6- PROP. AGGREGATE SHOULDERS, TYPE B
- 7- PROP. BITUMINOUS SURFACE TREATMENT A-1

FILE NAME =	USER NAME = sharpd	DESIGNED -	REVISED -
S:\CONTRMAINT\CAD\72K39 - FAI 55 5 (1) 55	W FR RD1 - Suddith to Logan Co line - A-1\PL	ADW\K9-shv-5-typicals.dgn	REVISED -
Default	PLOT SCALE = 3.0000' / in.	CHECKED -	REVISED -
	PLOT DATE = 12/27/2017	DATE -	REVISED -

STATE OF ILLINOIS  
 DEPARTMENT OF TRANSPORTATION

TYPICALS

SCALE: SHEET OF SHEETS STA. TO STA.

F.A.I. RTE.	SECTION	COUNTY	TOTAL SHEETS	SHEET NO.
55 5	(64-1-2) 0-3	SANGAMON	5	5
CONTRACT NO. 72K39				
ILLINOIS FED. AID PROJECT				