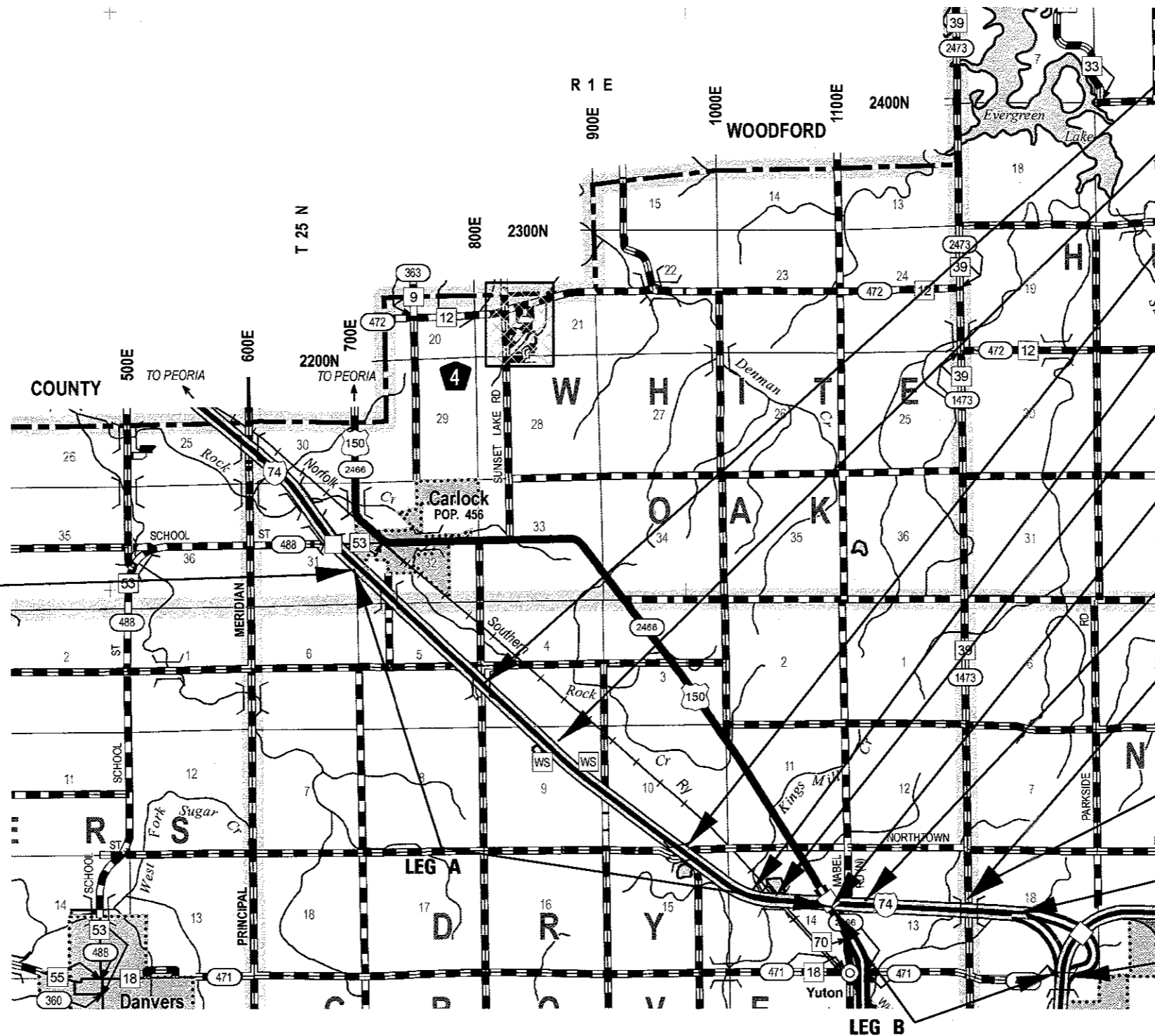


LOCATION #1 I-74 CARLOCK TO N. OF BLOOMINGTON

LEG A = 28,600 (2017)
 LEB B = 26,800 (2017)
 SU= 2.6% (LEG A) 4.7% (LEG B)
 MU= 11.5% (LEG A) 14% (LEG B)
 LENGTH = 38,111.01 FT = 7.22 MILES



LOCATION #1 BEGINS
STATION 1569 + 00

- SN 057-0112**
STA. 1567 + 99
WEIGH STATION
STA. E.B. 0 + 00.00 TO 7 + 02.24
STA. W.B. 0 + 00.00 TO 7 + 01.75
- SN 057-0115**
STA. E.B. 1737 + 38.77
STA. W.B. 1738 + 05.54
- SN 057-0045**
STA. E.B. STA 1782 + 01.42 TO 1785 + 81.99
- SN 057-0046**
STA. E.B. 1792 + 01.42 TO STA 1784 + 94.39
- SN 057-0073 MITSUBISHI MOTORWAY**
STA. E.B. 1808 + 20.96
STA. W.B. 1807 + 68.16
STATION EQUATION
STA. 1810 + 00.00(BK) STA 188 + 89.99 (AH)
- SN 057-0105**
STA. E.B. 247 + 17.47
STA. W.B. 247 + 17.47
- RURAL STA 247 + 17.47**
URBAN
- STATION E.B. 294 + 42.03 =**
STA. 42 + 46.29 RAMP C
- LOCATIONS #1 ENDS**
RAMP C STA. 0 + 38.42

MODEL - ENDS IN NAMES
 FILE NAME - p:\11\08\EBID\ITEG_illinois.gov\FWIDOT\Documents\DOT_Offices\District 5\Projects\0570D00\CA\DD\aa\Design\0570D00-sh1-cover.dgn

USER NAME = LEROYMA	DESIGNED -	REVISED -
PLOT SCALE = 40.0000' / in.	DRAWN -	REVISED -
PLOT DATE = 12/15/2017	CHECKED -	REVISED -
	DATE -	REVISED -

STATE OF ILLINOIS
DEPARTMENT OF TRANSPORTATION

SCALE:	SHEET	OF	SHEETS	STA.	TO	STA.
--------	-------	----	--------	------	----	------

F.A.I. RTE.	SECTION	COUNTY	TOTAL SHEETS	SHEET NO.
55/74	D5 CM PATCHING 2018-1	MCLEAN	23	3
CONTRACT NO. 70D00			ILLINOIS FED. AID PROJECT	

LOCATION #3 I-55 NE. OF BLOOMINGTON TO LEXINGTON

LEG D = 25,100 (2017)
 SU= 3.3%
 MU= 26.3%
 LENGTH = 101,720.19 FT = 19.27 MILES



PROJECT ENDS
STATION 446 + 76

SN 057-0152 /SN 057-0153
STA. 398 + 57

SN 057-0172
STA. 714 + 75.07

SN 057-0182 /SN 057-0183
STA. 711 + 75

SN 057-2005
STA. 686 + 50

SN 057-0171
STA. 645 + 71.31
SN 057-8301

STA. N.B. 571 + 57.13 /STA. S.B. 571 + 76.87

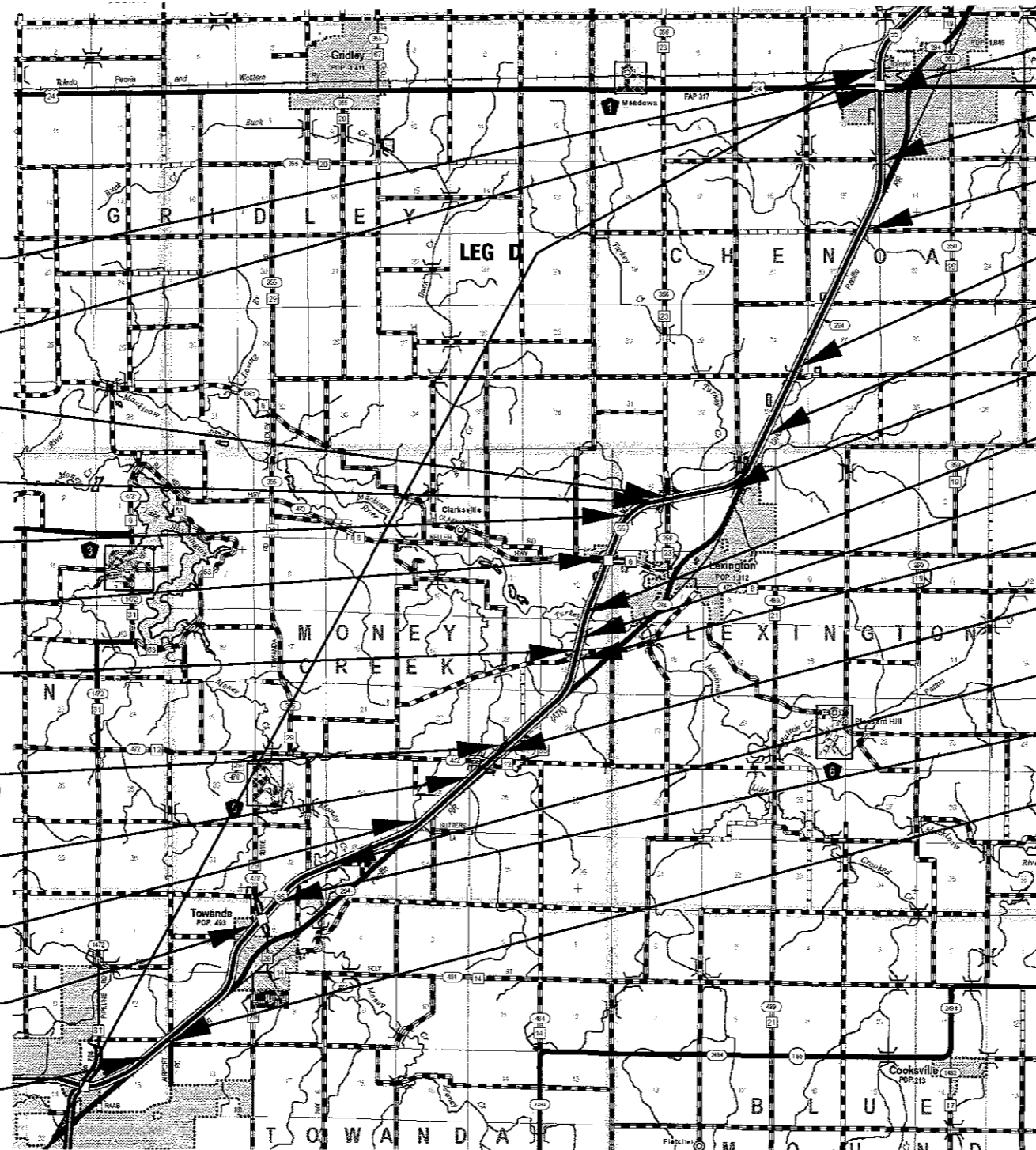
SN 057-8514
STA. N.B. STA 483 + 43.50 /STA. S.B. 484 + 55.50

SN 057-8513
STA. N.B. 445 + 35.22 /STA. S.B. 445 + 94.78

SN 057-8512
STA. N.B. 354 + 25.00 /STA S.B. 354 + 25.00

SN 057-0162
STA. 259 + 36.01 CO. HWY. 29 OVER I-55

LOCATION #3 BEGINS
STATION 114 + 55



SN 057-0178 S.B./SN 057-0179 N.B
STA. 411 + 28.42

SN 057-0177
STA. 345 + 71.49

SN 057-2004
STA. 290 + 51

SN 057-0175
STA. 170 + 65.42

STATION EQUATION
STA. 784 + 99.19 (BK)/100 + 00 (AH)

SN 057-0173 S.B /STA 057-0174 N.B.
STA. 781 + 50

SN 057-0169 /SN 057-0170
STA. 608 + 35.40

SN 057-0167 /SN 057-0168
STA. 588 + 37.5
SN 057-0166

STA. 571 + 30 TR 83 OVER I-55
SN 057-0165

STA. 464 + 85.00 CH 12 OVER I-55
SN 057-0163 /SN 057-0164

STA. 322 + 95

RURAL
URBAN STA 223 + 00

SN 057-8511
STA. N.B. 144 + 75.89 /STA. S.B. 145 + 16.11

MODEL: SMOELMAMES
 FILE NAME: \\ILL08AEMIDT\EGS\Illinois\pwr\PIWDOT\Documents\STDOT_Offices\District_5\Projects\5770000\CAD\Drawn\Design\5770000_sht_cover.dgn

USER NAME = LERGMA	DESIGNED -	REVISED -
PLOT SCALE = 40.0000' / in.	DRAWN -	REVISED -
PLOT DATE = 12/19/2017	CHECKED -	REVISED -
	DATE -	REVISED -

STATE OF ILLINOIS
DEPARTMENT OF TRANSPORTATION

SCALE: SHEET OF SHEETS STA. TO STA.

F.A.I. RTE.	SECTION	COUNTY	TOTAL SHEETS	SHEET NO.
55/74	DS CM PATCHING 2018-1	MCLEAN	23	5
CONTRACT NO. 70D00			ILLINOIS FED. AID PROJECT	

SUMMARY OF QUANTITIES

SEQ1 LOCATION #2 & 3 FAI 55 MCLEAN STA. 500+76 TO STA. 660+43.23 (#2) STA. 114+55 TO STA. 223+00 (#3) URBAN INTERSTATE 100% STATE CONSTRUCTION CODE: 0006	SEQ2 LOCATION #1 FAI 74 MCLEAN STA. 247+17.47 TO STA. 0+38.42 URBAN INTERSTATE 100% STATE CONSTRUCTION CODE: 0006	SEQ1 LOCATION #2 & 3 FAI 55 MCLEAN STA. 598+50 TO STA. 446+76 RURAL INTERSTATE 100% STATE CONSTRUCTION CODE: 0006	SEQ2 LOCATION #1 FAI 74 MCLEAN STA. 1569+00 TO STA. 247+17.47 RURAL INTERSTATE 100% STATE CONSTRUCTION CODE: 0006
--	--	--	--

PAY ITEM CODE	DESCRIPTION	UNIT	TOTAL	SEQ1 QTY	SEQ2 QTY	SEQ1 QTY	SEQ2 QTY
4200060	WELDED WIRE REINFORCEMENT	SQ YD	285.0		158.0		127.0
44201019	CLASS B PATCHES, TYPE II, 14 INCH	SQ YD	115.0				115.0
44201023	CLASS B PATCHES, TYPE III, 14 INCH	SQ YD	68.0				68.0
44201025	CLASS B PATCHES, TYPE IV, 14 INCH	SQ YD	90.0				90.0
44201053	CLASS B PATCHES, TYPE IV, 17 INCH	SQ YD	107.0		107.0		
44201055	CLASS B PATCHES, TYPE II, 17 INCH	SQ YD	203.0		203.0		
44201057	CLASS B PATCHES, TYPE III, 17 INCH	SQ YD	20.0		20.0		
44201299	DOWEL BARS 1 1/2"	EACH	1070.0		690.0		380.0
44213000	PATCHING REINFORCEMENT	SQ YD	1560.0	116.0	20.0	1311.0	113.0
44213200	SAW CUTS	FOOT	8003.0	468.0	1649.0	4456.0	1430.0
44213204	TIE BARS 3/4"	EACH	2867.0	268.0	68.0	2298.0	233.0
67100100	MOBILIZATION	LSUM	1.0	0.2	0.2	0.4	0.2
70100420	TRAFFIC CONTROL AND PROTECTION, STANDARD 701411	EACH	44.0	8.0	4.0	24.0	8.0
70100430	TRAFFIC CONTROL AND PROTECTION, STANDARD 701446	EACH	1.0	1.0			

14

MODEL: \$MODELNAME\$
 FILE NAME: \\w:\all\gpr\enr\it\ee\illinois.gov\pmd\dot\Documents\100T_Offices\Bakref_5\Project\357\70D00\CAD\Drawings\70D00-sh-500.dgn

USER NAME = LEROYMA PLOT SCALE = 40,0000' / in. PLOT DATE = 12/15/2017	DESIGNED - DRAWN - CHECKED - DATE -	REVISED - REVISED - REVISED - REVISED -	STATE OF ILLINOIS DEPARTMENT OF TRANSPORTATION	SUMMARY OF QUANTITIES	F.A.I. RTE. 55/74 SECTION D5 CM PATCHING 2018-1 COUNTY MCLEAN TOTAL SHEETS 23 SHEET NO. 6 CONTRACT NO. 70D00 ILLINOIS FED. AID PROJECT
--	--	--	---	------------------------------	--

SCALE: SHEET 1 OF 2 SHEETS STA. TO STA.

SUMMARY OF QUANTITIES

LOCATION #2 & 3 FAI 55 MCLEAN STA. 500+76 TO STA. 660+43.23 (#2) STA. 114+55 TO STA. 223+00 (#3) URBAN INTERSTATE 100% STATE	LOCATION #1 FAI 74 MCLEAN STA. 247+17.47 TO STA. 0+38.42 URBAN INTERSTATE 100% STATE	LOCATION #2 & 3 FAI 55 MCLEAN STA. 598+50 TO STA. 446+76	LOCATION #1 FAI 74 MCLEAN STA. 1569+00 TO STA. 247+17.47 RURAL INTERSTATE 100% STATE
---	---	--	---

CONSTRUCTION CODE: 0006 0006 0006 0006

70100800	TRAFFIC CONTROL AND PROTECTION, STANDARD 701401	LSUM	1.0	0.2	0.2	0.4	0.2
70103815	TRAFFIC CONTROL SURVEILLANCE	CAL DA	18.0	5.0	4.0	6.0	3.0
70200100	NIGHTTIME WORK ZONE LIGHTING	LSUM	1.0	1.0			
X1700054	CLASS A PATCHES, TYPE I, 13 INCH (SPECIAL)	SQ YD	123.0	12.0		111.0	
X1700055	CLASS A PATCHES, TYPE II, 13 INCH (SPECIAL)	SQ YD	526.0	69.3		456.7	
X1700056	CLASS A PATCHES, TYPE III, 13 INCH (SPECIAL)	SQ YD	487.0	32		455.0	
X1700057	CLASS A PATCHES, TYPE IV, 13 INCH (SPECIAL)	SQ YD	327.0			327.0	
X1700058	CLASS A PATCHES, TYPE I, 17 INCH (SPECIAL)	SQ YD	28.0		20.0		8.0
X1700059	CLASS A PATCHES, TYPE II, 17 INCH (SPECIAL)	SQ YD	49.0				49.0
X1700060	CLASS A PATCHES, TYPE III, 17 INCH (SPECIAL)	SQ YD	16.0				16.0
X1700061	CLASS A PATCHES, TYPE IV, 17 INCH (SPECIAL)	SQ YD	40.0				40.0
X7015005	CHANGEABLE MESSAGE SIGN	CAL DA	22.0	7.0	6.0	6.0	3.0

12

MODEL: #MODEL\JAMES... FILE NAME: D:\ALLOBA\END\INTEG\Illinois.gov\PWD\DOT\Documents\1007_Offices\District_S\Project\3570D00\CAD\Detail\Design\DS70D00_PN-500.dgn

USER NAME = LEROYMA	DESIGNED -	REVISED -
	DRAWN -	REVISED -
PLOT SCALE = 40.0000' / in.	CHECKED -	REVISED -
PLOT DATE = 12/15/2017	DATE -	REVISED -

**STATE OF ILLINOIS
DEPARTMENT OF TRANSPORTATION**

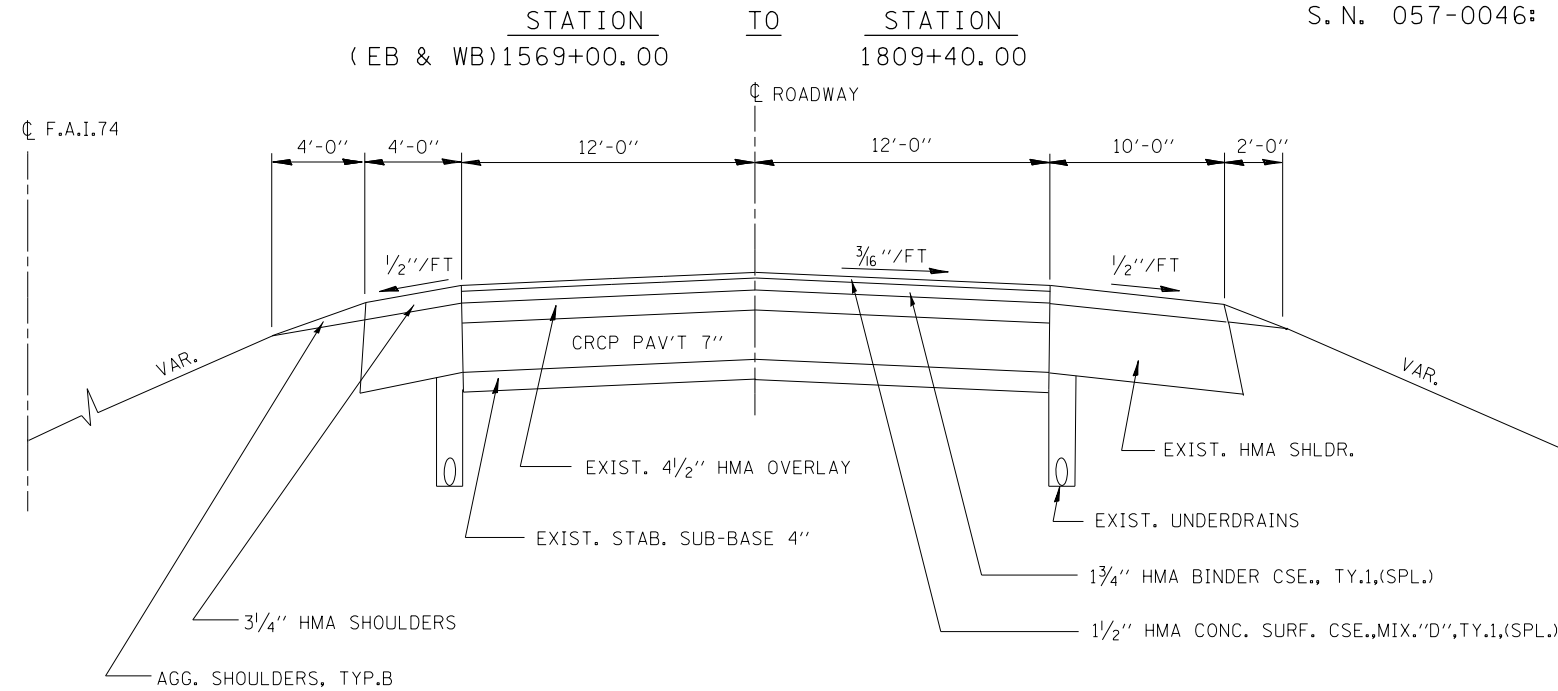
SUMMARY OF QUANTITIES

SCALE: SHEET 2 OF 2 SHEETS STA. TO STA.

F.A.I. RTE. 55/74	SECTION D5 CM PATCHING 2018-1	COUNTY MCLEAN	TOTAL SHEETS 23	SHEET NO. 7
CONTRACT NO. 70D00				ILLINOIS FED. AID PROJECT

EXISTING TYPICAL SECTION F.A.I. – 74 NORTH & SOUTHBOUND

STRUCTURE OMISSION(S)
S. N. 057-0045: STA. 1782+89.02 TO 1785+81.99 (EB)
S. N. 057-0046: STA. 1782+01.42 TO 1784+94.39 (WB)



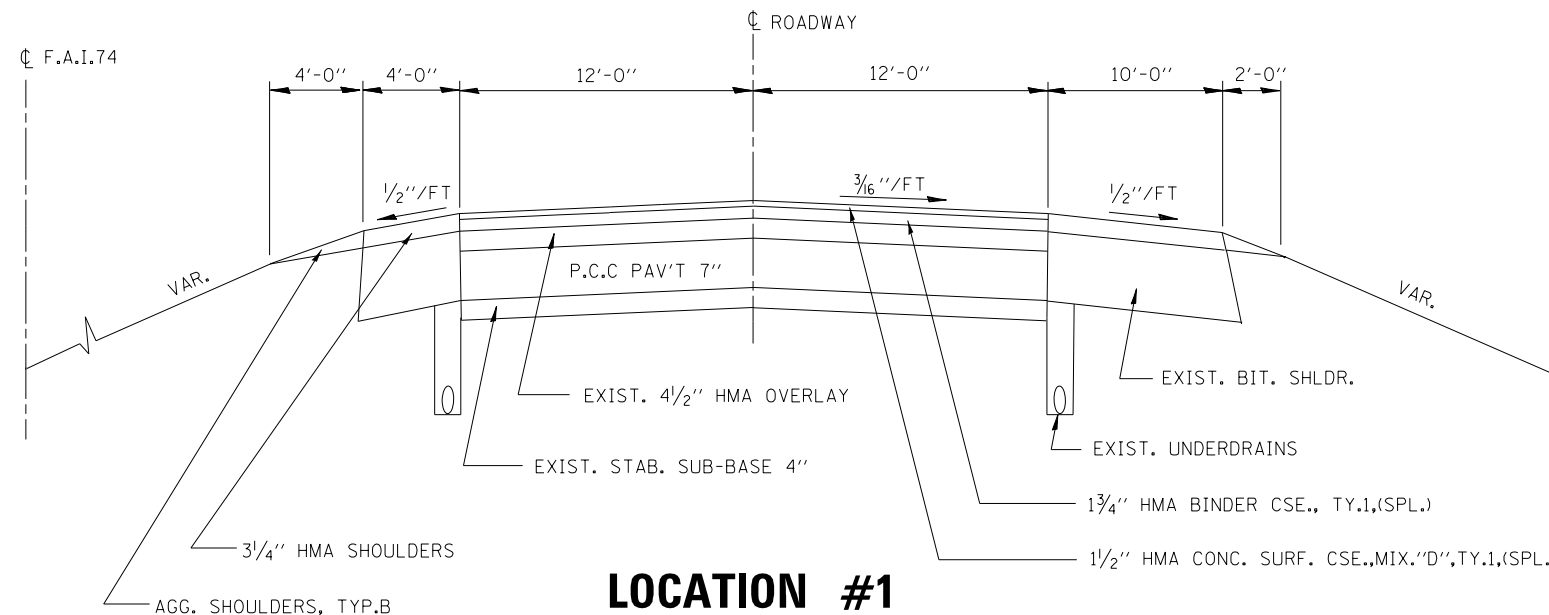
LOCATION #1

NOT TO SCALE

EXISTING TYPICAL SECTION F.A.I. – 74 NORTH & SOUTHBOUND

EB I-74 ENDS STATION 262+00.00 (RAMP B)

STATION TO STATION
(EB & WB) 1809+40.00 1810+00.00 (BK)
180+89.99 (AH) 262+00.00 I-74/ US 51
& I-55 RAMP B



LOCATION #1

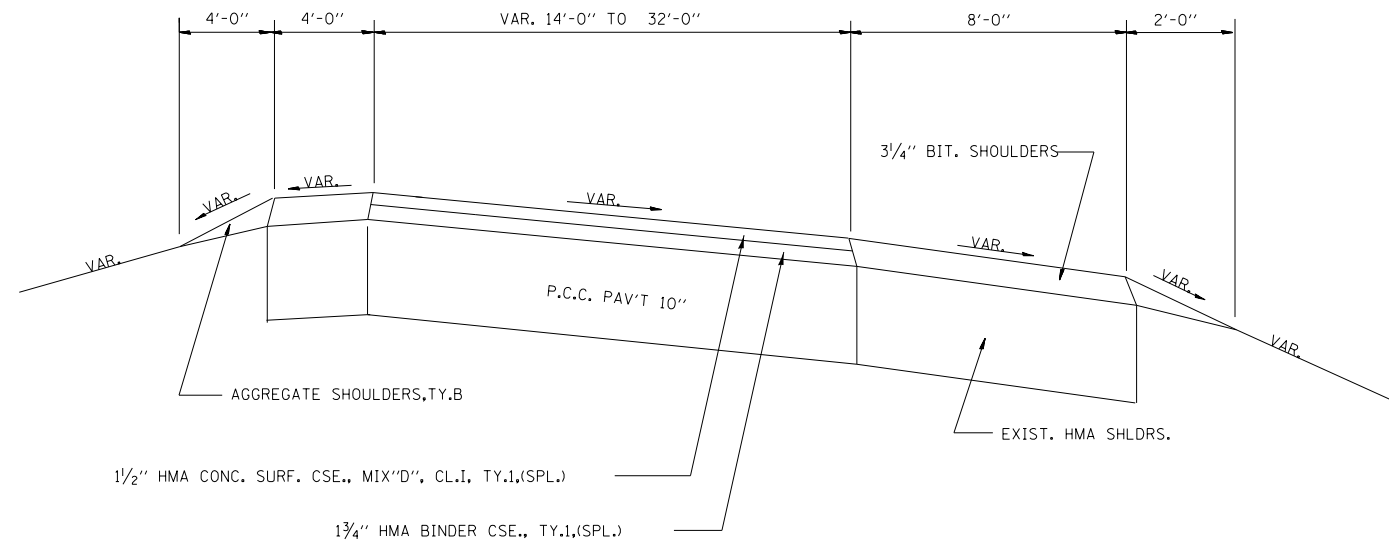
NOT TO SCALE

FILE NAME =	USER NAME = LEROYMA	DESIGNED - JMS	REVISED -	STATE OF ILLINOIS DEPARTMENT OF TRANSPORTATION	EXISTING & PROPOSED TYPICAL SECTIONS	F.A.I. 55/74	SECTION D5 CM PATCHING 2018-1	COUNTY MCLEAN	TOTAL SHEETS 29	SHEET NO. 8	
PLOT SCALE = 100.0000' / 1in.				SCALE: NO SCALE		SHEET NO. 1 OF 8 SHEETS		STA. TO STA.		CONTRACT NO. 70D00	
PLOT DATE = 12/15/2017				DATE - 02/27/2009		ILLINOIS FED. AID PROJECT					

EXISTING TYPICAL SECTION F.A.I. – 74 NORTH & SOUTHBOUND

CARLOCK WEIGH STATION

STATION	TO	STATION
WB 0+00.00		7+01.75
EB 0+00.00		7+04.24

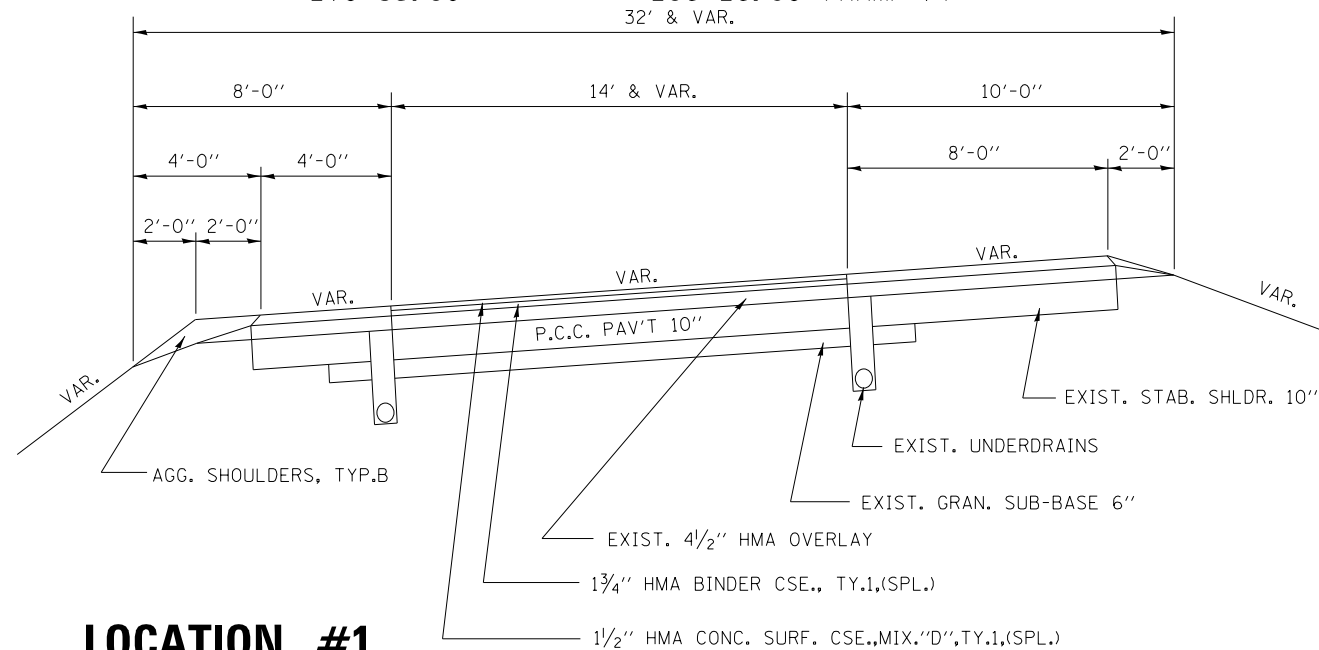


LOCATION #1

NOT TO SCALE

EXISTING TYPICAL SECTION F.A.I. – 74 NORTH & SOUTHBOUND

STATION	TO	STATION
270+35.80		283+76.42 (RAMP C)
270+35.80		291+91.19 (RAMP E)
270+35.80		286+26.90 (RAMP F)



LOCATION #1

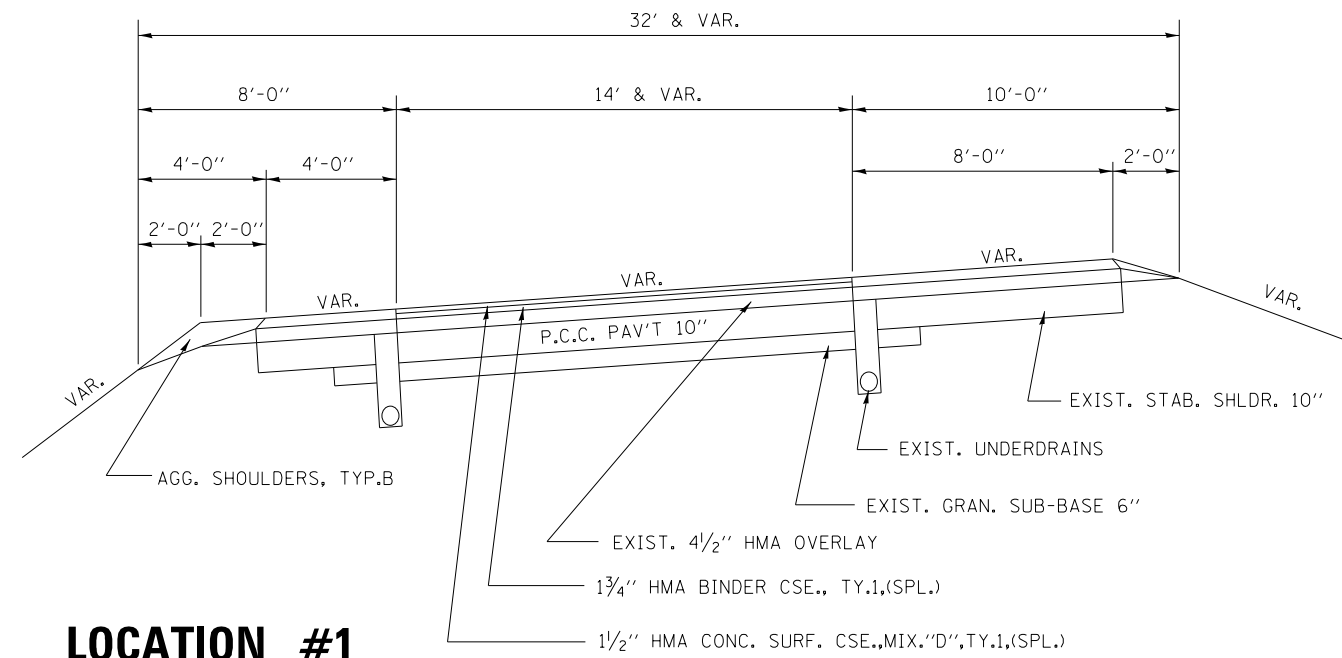
NOT TO SCALE

FILE NAME =	USER NAME = LEROYMA	DESIGNED - JMS	REVISED -	STATE OF ILLINOIS DEPARTMENT OF TRANSPORTATION	EXISTING & PROPOSED TYPICAL SECTIONS	F.A.I. RTE.	SECTION	COUNTY	TOTAL SHEETS	SHEET NO.	
						55/74	D5 CM PATCHING 2018-1	MCLEAN	29	9	
						CONTRACT NO. 70D00					
						FED. ROAD DIST. NO.	ILLINOIS	FED. AID PROJECT			
PLOT SCALE = 100.0000' / 1"						SCALE: NO SCALE		SHEET NO. 2 OF 8 SHEETS		STA. TO STA.	
PLOT DATE = 12/15/2017											

EXISTING TYPICAL SECTION

F.A.I. – 74 NORTH & F.A.I. 55 INTERCHANGE

STATION TO STATION
0+38 45+00 (RAMP C)



NOT TO SCALE

FILE NAME =	USER NAME = LEROYMA	DESIGNED - JMS	REVISED -	STATE OF ILLINOIS DEPARTMENT OF TRANSPORTATION	EXISTING & PROPOSED TYPICAL SECTIONS			F.A.P. RTE.	SECTION	COUNTY	TOTAL SHEETS	SHEET NO.
pw:\11084EBIDINTEG.illinois.gov\PIWIDOT\Documents\DOT Offices\District 5\Projects\0579\DRAWING\Design\MS7000-sh-typicals.dwg			REVISED -		74	D5 CM PATCHING 2018-1	MCLEAN	29	10			
PLOT SCALE = 100.0000' / in.	CHECKED -	REVISED -	REVISED -		SCALE: NO SCALE SHEET NO. 3 OF 8 SHEETS STA. TO STA.			CONTRACT NO. 70D00				
PLOT DATE = 12/15/2017	DATE - 02/27/2009	REVISED -	REVISED -		FED. ROAD DIST. NO. ILLINOIS FED. AID PROJECT							

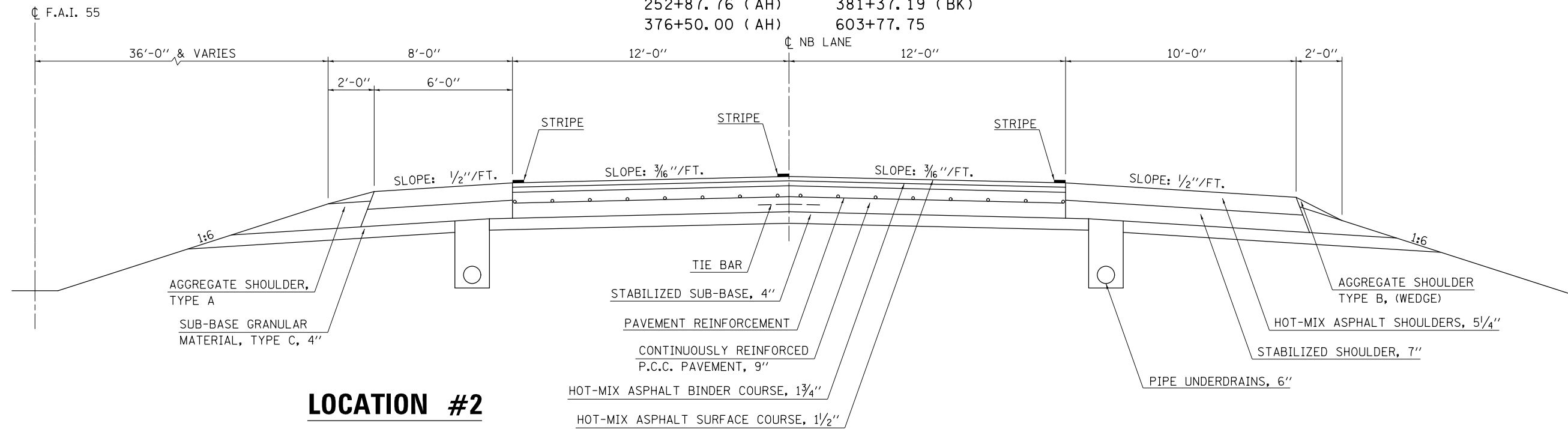
EXISTING TYPICAL CROSS SECTION

F.A.I. – 55 NORTHBOUND

STATION	TO	STATION
587+34.90		783+30.73 (BK)
74+89.65 (AH)		252+74.34 (BK)
252+87.76 (AH)		381+37.19 (BK)
376+50.00 (AH)		603+77.75

STRUCTURE OMISSIONS

STATION 752+92.92 TO STATION 755+04.12; S.N. 057-0155
 STATION 296+56.45 TO STATION 298+96.95; S.N. 057-0158
 STATION 340+88.65 TO STATION 343+73.35; S.N. 057-0160

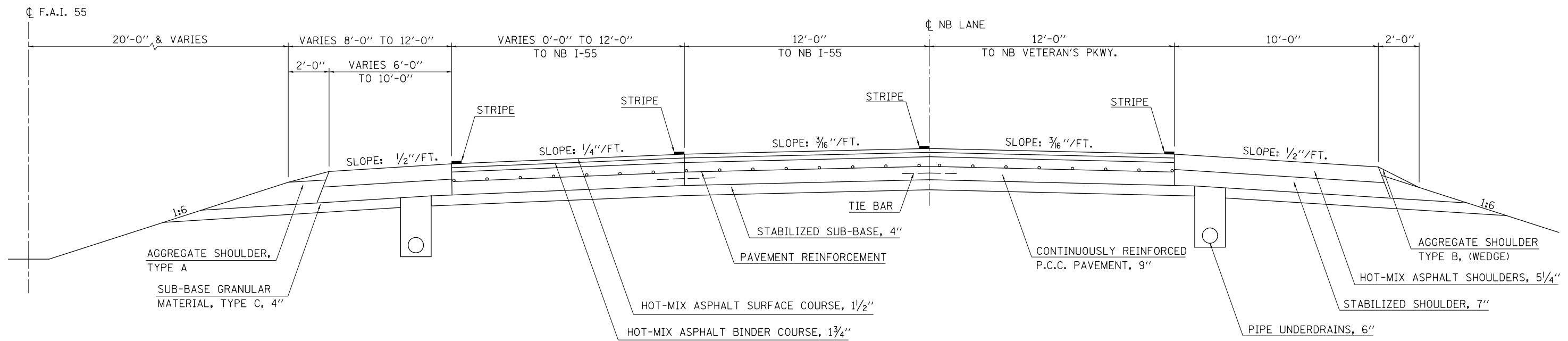


LOCATION #2

EXISTING TYPICAL CROSS SECTION

F.A.I. – 55 NORTHBOUND

STATION	TO	STATION
603+77.75		637+16.72



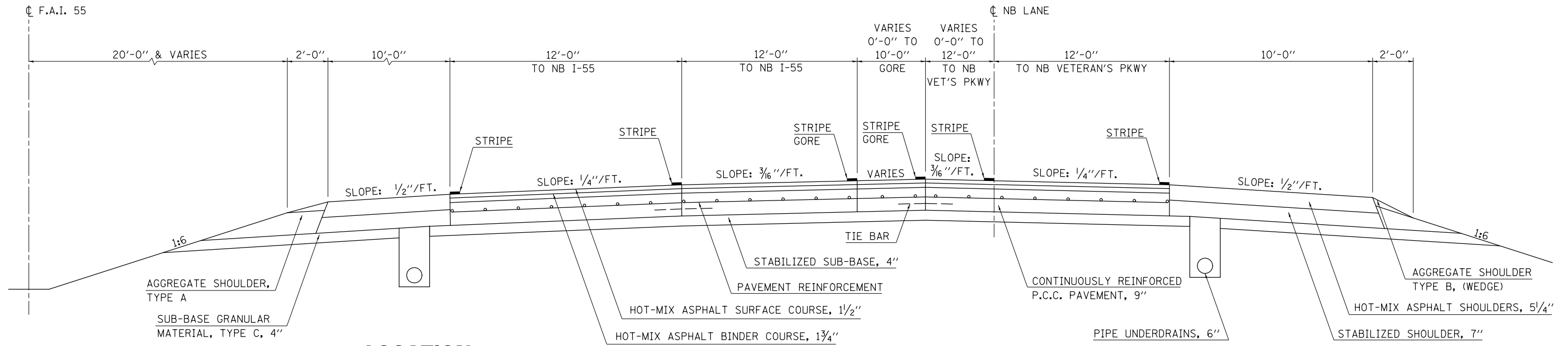
LOCATION #2

FILE NAME =	USER NAME = LEROYMA	DESIGNED - GAE	REVISED -	STATE OF ILLINOIS DEPARTMENT OF TRANSPORTATION	TYPICAL CROSS SECTIONS			F.A.I. RTE.	SECTION	COUNTY	TOTAL SHEETS	SHEET NO.	
pw:\IL\084EBIDINTEG\Illinois.gov\PIDOT\Documents\IDOT Offices\District 5\Projects\057\CDRAWING\084EBIDINTEG\057\0000-shr-typicals.dwg			REVISED -		SCALE: NONE	SHEET NO. 4 OF 8 SHEETS	STA.	TO STA.	55/74	D5 CM PATCHING 2018-1	MCLEAN	29	11
			REVISED -					CONTRACT NO. 70D00					
			REVISED -		ILLINOIS FED. AID PROJECT								

EXISTING TYPICAL CROSS SECTION

F.A.I. - 55 NORTHBOUND

STATION TO STATION
637+16.72 TO 647+48.69



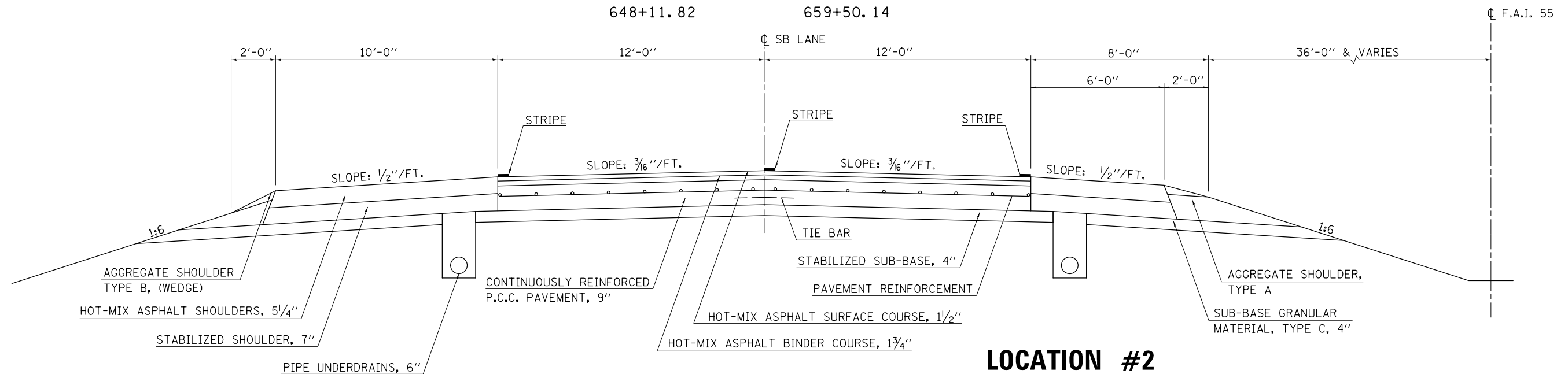
LOCATION #2

EXISTING TYPICAL CROSS SECTION

F.A.I. - 55 SOUTHBOUND

STATION TO STATION
587+34.90 TO 783+30.73 (BK)
74+89.65 (AH) TO 252+74.34 (BK)
252+87.76 (AH) TO 381+37.19 (BK)
376+50.00 (AH) TO 613+90.99
648+11.82 TO 659+50.14

STRUCTURE OMISSIONS
STATION 751+91.08 TO STATION 754+14.14; S.N. 057-0154
STATION 296+45.24 TO STATION 298+84.22; S.N. 057-0157
STATION 340+23.99 TO STATION 343+08.69; S.N. 057-0159

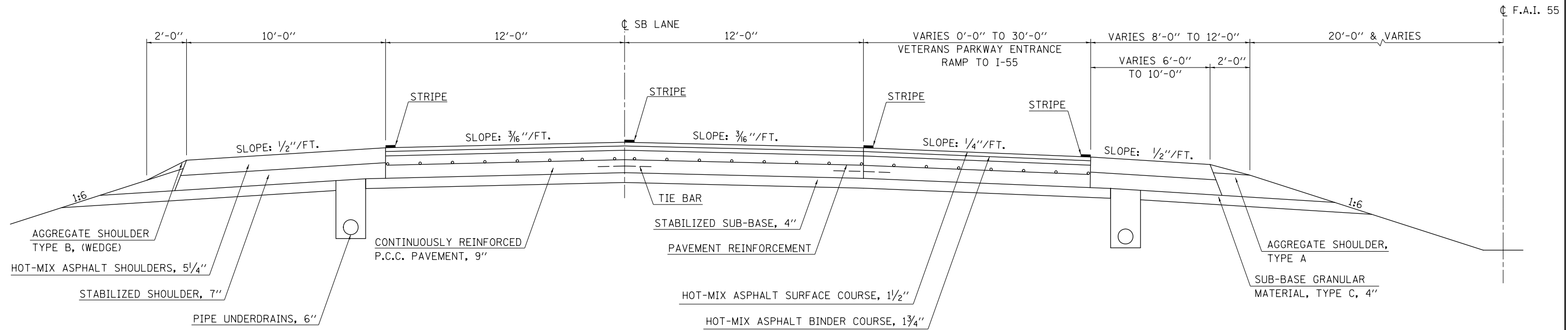


LOCATION #2

EXISTING TYPICAL CROSS SECTION

F.A.I. - 55 SOUTHBOUND

STATION TO STATION
613+90.99 TO 648+11.82



FILE NAME =	USER NAME = LEROYMA	DESIGNED - GAE	REVISED -
p:\11\084EBIDINTEG.illinois.gov\PIWIDOT\Documents\DOT Offices\District 5\Projects\057\CDRAWING\Design\057\0000-shr-typicals.dwg		DRAWN -	REVISED -
	PLOT SCALE = 100.0000' / 1in.	CHECKED -	REVISED -
	PLOT DATE = 12/15/2017	DATE - 12/29/09	REVISED -

STATE OF ILLINOIS
DEPARTMENT OF TRANSPORTATION

TYPICAL CROSS SECTIONS

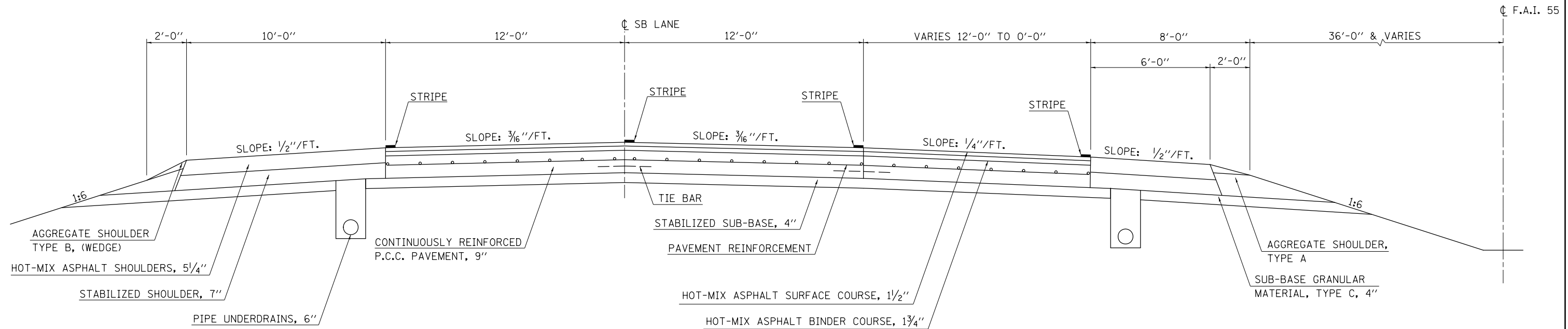
SCALE: NONE SHEET NO. 6 OF 8 SHEETS STA. TO STA.

F.A.I. RTE.	SECTION	COUNTY	TOTAL SHEETS	SHEET NO.
55/74	D5 CM PATCHING 2018-1	MCLEAN	29	13
CONTRACT NO. 70D00			ILLINOIS FED. AID PROJECT	

EXISTING TYPICAL CROSS SECTION

F.A.I. – 55 SOUTHBOUND

STATION TO STATION
114+64.00 126+60.28



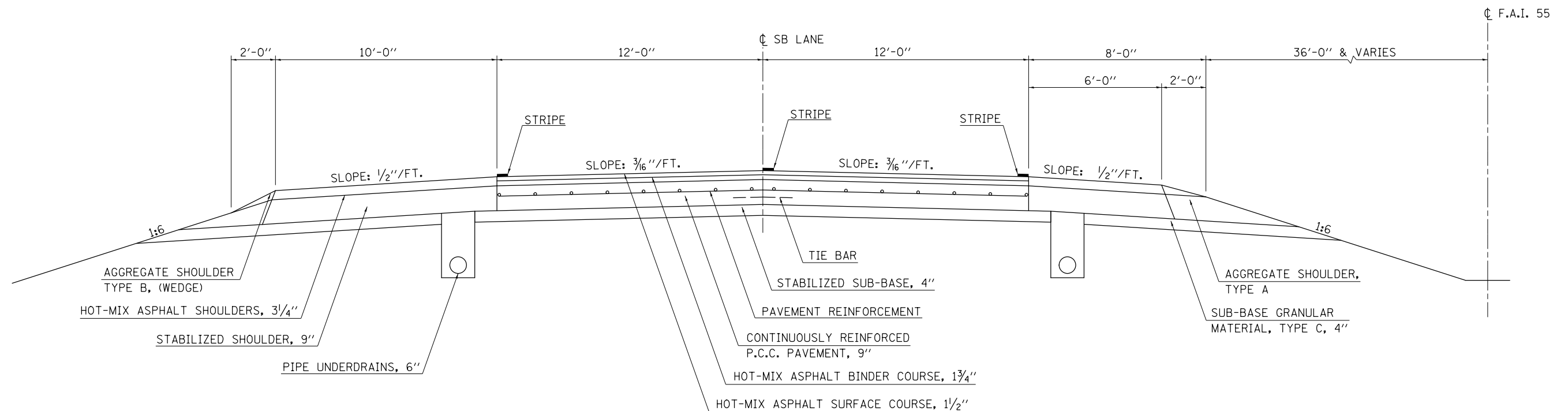
EXISTING TYPICAL CROSS SECTION

F.A.I. – 55 SOUTHBOUND

STATION TO STATION
126+60.28 621+47.00

STRUCTURE OMISSIONS

STATION 321+69.58 TO STATION 323+60.86; S. N. 057-0163
 STATION 586+62.13 TO STATION 590+12.86; S. N. 057-0168
 STATION 606+71.74 TO STATION 609+99.07; S. N. 057-0169



FILE NAME =	USER NAME = LEROYMA	DESIGNED - GAE	REVISED -	STATE OF ILLINOIS DEPARTMENT OF TRANSPORTATION	TYPICAL CROSS SECTIONS			F.A.I. RTE.	SECTION	COUNTY	TOTAL SHEETS	SHEET NO.
					SCALE: NONE	SHEET NO. 8 OF 8 SHEETS	STA.	TO STA.				
					ILLINOIS FED. AID PROJECT							

CLASS B PATCHES

LOCATION #1

APPROX. STATION	LANE	LENGTH	WIDTH	SQ YD	TYPE	DESCRIPTION	CLASS B PATCHES, TYPE II, 14"	CLASS B PATCHES, TYPE III, 14"	CLASS B PATCHES, TYPE IV, 14"	DOWEL BARS 1 1/2"	SAW CUTS	TIE BARS 3/4"	WELDED WIRE REINFORCEMENT
							(SQ YD)	(SQ YD)	(SQ YD)	(EACH)	(FT)	(EACH)	(SQ YD)
							RURAL	RURAL	RURAL	RURAL	RURAL	RURAL	RURAL
							44201019	44201023	44201025	44201299	44213200	44213204	42000060
WB SCALE RAMP	OFF RAMP	6	12	8.00	CL "B"	RAMP	8.0			20.0	48.0		
WB SCALE RAMP	OFF RAMP	12	12	16.00	CL "B"	RAMP		16.0		20.0	60.0		16.0
WB SCALE RAMP	OFF RAMP	12	12	16.00	CL "B"	RAMP		16.0		20.0	60.0		16.0
1683+00	OFF RAMP	15	12	20.00	CL "B"	RAMP		20.0		20.0	66.0		20.0
WB SCALE RAMP	ON RAMP	37	12	49.33	CL "B"	RAMP			49.3	30.0	110.0	19.0	49.3
WB SCALE RAMP	ON RAMP	8	12	10.67	CL "B"	RAMP	10.7			20.0	52.0		
WB SCALE RAMP	ON RAMP	6	12	8.00	CL "B"	RAMP	8.0			20.0	48.0		
WB SCALE RAMP	ON RAMP	6	12	8.00	CL "B"	RAMP	8.0			20.0	48.0		
	EB												
EB SCALE RAMP	OFF RAMP	6	12	8.00	CL "B"	RAMP	8.0			20.0	48.0		
EB SCALE RAMP	OFF RAMP	6	12	8.00	CL "B"	RAMP	8.0			20.0	48.0		
EB SCALE RAMP	OFF RAMP	6	12	8.00	CL "B"	RAMP	8.0			20.0	48.0		
EB SCALE RAMP	OFF RAMP	10	12	13.33	CL "B"	RAMP	13.3			20.0	56.0		
EB SCALE RAMP	OFF RAMP	10	12	13.33	CL "B"	RAMP	13.3			20.0	56.0		
EB SCALE RAMP	OFF RAMP	6	12	8.00	CL "B"	RAMP	13.3			20.0	48.0		
EB SCALE RAMP	OFF RAMP	6	12	8.00	CL "B"	RAMP	8.0			20.0	48.0		
EB SCALE RAMP	OFF RAMP	6	12	8.00	CL "B"	RAMP	8.0			20.0	48.0		
EB SCALE RAMP	ON RAMP	12	12	16.00	CL "B"	RAMP		16.0		20.0	60.0		16.0
EB SCALE RAMP	ON RAMP	30	12	40.00	CL "B"	RAMP			40.0	30.0	96.0	15.0	40.0
TOTAL				266.67			114.6	68.0	89.3	380.0	1048.0	34.0	157.3
USE							115.0	68.0	90.0	380.0	1048.0	34.0	158.0

MODEL: \\MODELNAME
 FILE NAME: \\FILENAME
 PROJECT: \\PROJECTNAME
 OFFICE: \\OFFICE
 DESIGNED: \\DESIGNED
 DRAWN: \\DRAWN
 CHECKED: \\CHECKED
 DATE: \\DATE

USER NAME = LEROYMA	DESIGNED -	REVISED -
	DRAWN -	REVISED -
PLOT SCALE = 40.0000 ' / in.	CHECKED -	REVISED -
PLOT DATE = 12/15/2017	DATE -	REVISED -

**STATE OF ILLINOIS
DEPARTMENT OF TRANSPORTATION**

SCHEDULE OF QUANTITIES

SCALE: SHEET 1 OF 6 SHEETS STA. TO STA.

F.A.I. RTE.	SECTION	COUNTY	TOTAL SHEETS	SHEET NO.
55/74	D5 CM PATCHING 2018-1	MCLEAN	23	16
CONTRACT NO. 70D00				
ILLINOIS FED. AID PROJECT				

CLASS B PATCHES

APPROX. STATION	LANE	LENGTH	WIDTH	SQ YD	TYPE	DESCRIPTION	CLASS B PATCHES, TYPE II, 17"	CLASS B PATCHES, TYPE III, 17"	CLASS B PATCHES, TYPE IV, 17"	DOWEL BARS 1 1/2"	SAW CUTS	WELDED WIRE REINFORCEMENT
							(SQ YD)	(SQ YD)	(SQ YD)	(EACH)	(FT)	(SQ YD)
							URBAN	URBAN	URBAN	URBAN	URBAN	URBAN
							44201055	44201057	44201053	44201299	44213200	42000060
	WB											
06+32	RAMP C	6	16	10.67	CL "B"	RAMP	10.7			28.0	60.0	
06+45	RAMP C	6	16	10.67	CL "B"	RAMP	10.7			28.0	60.0	
08+50	RAMP C	6	16	10.67	CL "B"	RAMP	10.7			28.0	60.0	
11+00	RAMP C	6	16	10.67	CL "B"	RAMP	10.7			28.0	60.0	
11+45	RAMP C	6	16	10.67	CL "B"	RAMP	10.7			28.0	60.0	
12+45	RAMP C	15	16	26.67	CL "B"	RAMP			26.7	28.0	78.0	26.7
12+55	RAMP C	15	16	26.67	CL "B"	RAMP			26.7	28.0	78.0	26.7
14+00	RAMP C	6	16	10.67	CL "B"	RAMP	10.7			28.0	60.0	
14+50	RAMP C	6	16	10.67	CL "B"	RAMP	10.7			28.0	60.0	
14+75	RAMP C	6	16	10.67	CL "B"	RAMP	10.7			28.0	60.0	
16+00	RAMP C	6	16	10.67	CL "B"	RAMP	10.7			28.0	60.0	
16+15	RAMP C	6	16	10.67	CL "B"	RAMP	10.7			28.0	60.0	
16+25	RAMP C	6	16	10.67	CL "B"	RAMP	10.7			28.0	60.0	
16+50	RAMP C	6	16	10.67	CL "B"	RAMP	10.7			28.0	60.0	
17+00	RAMP C	6	16	10.67	CL "B"	RAMP	10.7			28.0	60.0	
17+25	RAMP C	6	16	10.67	CL "B"	RAMP	10.7			28.0	60.0	
19+75	RAMP C	6	16	10.67	CL "B"	RAMP	10.7			28.0	60.0	
21+00	RAMP C	6	16	10.67	CL "B"	RAMP	10.7			28.0	60.0	
22+00	RAMP C	6	16	10.67	CL "B"	RAMP	10.7			28.0	60.0	
31+00	RAMP C	7	25	19.44	CL "B"	RAMP		19.4		46.0	89.0	19.4
32+00	RAMP C	15	16	26.67	CL "B"	RAMP			26.7	28.0	78.0	26.7
33+00	RAMP C	6	16	10.67	CL "B"	RAMP	10.7			28.0	60.0	
33+30	RAMP C	6	16	10.67	CL "B"	RAMP	10.7			28.0	60.0	
37+00	RAMP C	15	16	26.67	CL "B"	RAMP			26.7	28.0	78.0	26.7
TOTAL				328.8			202.7	19.4	106.7	690.0	1541.0	126.2
USE							203.0	20.0	107.0	690.0	1541.0	127.0

MODEL: \\MODELNAME
 FILE: \\NAME.PLOT\PROJECTS\570000\CADD\DATA\Design\570000\CH-SCHEM.DGN

USER NAME = LEROYMA	DESIGNED -	REVISED -
	DRAWN -	REVISED -
PLOT SCALE = 40.0000 ' / in.	CHECKED -	REVISED -
PLOT DATE = 12/15/2017	DATE -	REVISED -

**STATE OF ILLINOIS
DEPARTMENT OF TRANSPORTATION**

SCHEDULE OF QUANTITIES

SCALE: SHEET 2 OF 6 SHEETS STA. TO STA.

F.A.I. RTE.	SECTION	COUNTY	TOTAL SHEETS	SHEET NO.
55/74	D5 CM PATCHING 2018-1	MCLEAN	23	17
CONTRACT NO. 70D00				
ILLINOIS FED. AID PROJECT				

CLASS A (SPECIAL), 17"

LOCATION #1							CLASS A PATCHES, TYPE I, 17" (SPECIAL) (SQ YD)		CLASS A PATCHES, TYPE II, 17" (SPECIAL) (SQ YD)		CLASS A PATCHES, TYPE III, 17" (SPECIAL) (SQ YD)		CLASS A PATCHES, TYPE IV, 17" (SPECIAL) (SQ YD)		SAW CUTS (FT)		TIE BARS 3/4" TRANVERSE (EACH)		TIE BARS 3/4" LONGITUDINAL (EACH)		PATCHING REINFORCEMENT (SQ. YD)	
APPROX. STATION	LANE	LENGTH	WIDTH	SQ YD	TYPE	DESCRIPTION	RURAL	URBAN	RURAL	URBAN	RURAL	URBAN	RURAL	URBAN	RURAL	URBAN	RURAL	URBAN	RURAL	URBAN	RURAL	URBAN
							X1700058		X1700059		X1700060		X1700061		44213200		44213204		44213204		44213000	
WESTBOUND																						
258+20	PL	6	12	8.00	CL "A"	AT CROSSOVER		8.0							36.0		26.0					8.0
I-74 WB																						
1623+50		6	6	4.00	CL "A"	UNDER STR. 114	4.0							24.0		14.0						4.0
1555+00		20	6	13.33	CL "A"	UNDER STR. 112			13.3					52.0		14.0		10.0				13.3
EB																						
1569+00	DL	15	6	10.00	CL "A"	UNDER STR. 112			10.0					42.0		14.0						10.0
1569+00	DL	10	6	6.67	CL "A"	UNDER STR. 112			6.7					32.0		14.0						6.7
1623+00	DL	30	12	40.00	CL "A"	UNDER STR. 114						40.0		84.0		26.0		15.0				40.0
1623+00	DL	6	6	4.00	CL "A"	UNDER STR. 114	4.0							24.0		14.0						4.0
1623+00	DL	12	12	16.00	CL "A"	UNDER STR. 114				16.0				48.0		26.0						16.0
1624+00	PL	8	12	10.67	CL "A"	UNDER STR. 114			10.7					40.0		26.0						10.7
1620+00	PL	6	12	8.00	CL "A"	UNDER STR. 114			8.0					36.0		26.0						8.0
I-74 RAMP TO I-55																						
255+00		6	6	4.00	CL "A"			4.0						24.0		14.0						4.0
255+50		6	6	4.00	CL "A"			4.0						24.0		14.0						4.0
257+00		6	6	4.00	CL "A"			4.0						24.0		14.0						4.0
TOTAL				132.67			8.0	20.0	49.0	0.0	16.0	0.0	40.0	0.0	382.0	108.0	174.0	68.0	25.0	0.0	113.0	20.0
USE							28.0		49.0		16.0		40.0		490.0		242.0		25.0		133.0	

MODEL: \\MODELNAME
 FILE NAME: \\FILENAME
 PROJECT: \\PROJECT
 OFFICE: \\OFFICE
 DESIGNED BY: \\DESIGNEDBY
 DRAWN BY: \\DRAWNBY
 CHECKED BY: \\CHECKEDBY
 DATE: \\DATE

USER NAME = LEROYMA PLOT SCALE = 40.0000' / in. PLOT DATE = 12/15/2017	DESIGNED - DRAWN - CHECKED - DATE -	REVISED - REVISED - REVISED - REVISED -	STATE OF ILLINOIS DEPARTMENT OF TRANSPORTATION	SCHEDULE OF QUANTITIES	SCALE:	SHEET 3 OF 6 SHEETS STA. TO STA.	F.A.I. RTE. SECTION COUNTY TOTAL SHEETS SHEET NO. 55/74 D5 CM PATCHING 2018-1 MCLEAN 23 18 CONTRACT NO. 70D00 ILLINOIS FED. AID PROJECT
--	--	--	---	-------------------------------	--------	----------------------------------	--

CLASS A (SPECIAL), 13"

LOCATION #3

LOG MILE	APPROX. STATION	LANE	LENGTH	WIDTH	SQ YD	TYPE	DESCRIPTION	CLASS A PATCHES TYPE I, 13" (SPECIAL) (SQ YD)		CLASS A PATCHES TYPE II, 13" (SPECIAL) (SQ YD)		CLASS A PATCHES TYPE III, 13" (SPECIAL) (SQ YD)		CLASS A PATCHES TYPE IV, 13" (SPECIAL) (SQ YD)		SAW CUTS (FT)		TIE BARS 3/4" TRANSVERSE (EACH)		TIE BARS 3/4" LONGITUDINAL (EACH)		PATCHING REINFORCEMENT (SQ. YD)						
								RURAL	URBAN	RURAL	URBAN	RURAL	URBAN	RURAL	URBAN	RURAL	URBAN	RURAL	URBAN	RURAL	URBAN	URBAN	RURAL	RURAL	RURAL	URBAN	RURAL	URBAN
								X1700054		X1700055		X1700056		X1700057		44213200		44213204		44213204		44213000						
1.13	397+66	DRIVING	8	12	10.67	CL "A"	S. of S. Appr. Pvt			10.67						40		26				10.70						
1.14	397+13	Rt. Turn	6	16	10.67	CL "A"	SB Chenoa OFF Ramp			10.67						44		34				10.70						
1.14	397+13	DRIVING	6	12	8.00	CL "A"				8.00						36		26				8.00						
1.14	397+13	PASSING	6	12	8.00	CL "A"				8.00						36		26				8.00						
2.09	346+97	DRIVING	8	12	10.67	CL "A"	N. of Str 177 Ovhd Bridge			10.67						40		26				10.70						
2.09	346+97	DRIVING	6	6	4.00	CL "A"	N. of Str 177 Ovhd Bridge	4.00								24		14				4.00						
2.10	346+44	PASSING	10	6	6.67	CL "A"	N. of Str 177 Ovhd Bridge	6.67								32		14				6.70						
3.10	293+64	DRIVING	10	12	13.33	CL "A"				13.33						44		26				13.30						
3.53	270+94	DRIVING	12	12	16.00	CL "A"					16.00					48		26				16.00						
4.09	241+37	DRIVING	6	6	4.00	CL "A"	Sta. Stamp 240+00	4.00								24		14				4.00						
4.10	240+84	DRIVING	6	12	8.00	CL "A"				8.00						36		26				8.00						
4.33	228+70	DRIVING	6	12	8.00	CL "A"				8.00						36		26				8.00						
4.71	208+63	DRIVING	6	6	4.00	CL "A"		4.00								24		14				4.00						
5.10	188+04	DRIVING	6	6	4.00	CL "A"		4.00								24		14				4.00						
6.74	101+45	DRIVING	6	12	8.00	CL "A"	N oF N Appr. ISU Farm Brdg			8.00						36		26				8.00						
6.75	100+92	DRIVING	15	12	20.00	CL "A"	N oF N Appr. ISU Farm Brdg				20.00					54		26				20.00						
6.77	100+00	EQUATION STATION																										
6.77	784+99																											
6.79	780+26	DRIVING	15	12	20.00	CL "A"	S. of S. Appr.				20.00					54		26				20.00						
6.79	780+26	DRIVING	6	12	8.00	CL "A"				8.00						36		26				8.00						
6.80	783+41	DRIVING	8	12	10.67	CL "A"	Broken Patch at Sleeper			10.67						40		26				10.70						
6.80	783+41	DRIVING	15	12	20.00	CL "A"	Broken Patch at Sleeper				20.00					54		26				20.00						
8.02	710+00	DRIVING	6	12	8.00	CL "A"	S. END OF S. APPR.			8.00						36		26				8.00						
9.65	632+93	DRIVING	6	12	8.00	CL "A"	JUST N. OF MM 178			8.00						36		26				8.00						
9.98	615+50	DRIVING	15	12	20.00	CL "A"	N. OF N. APPR STR #169				20.00					54		26				20.00						
9.98	615+50	PASSING	15	12	20.00	CL "A"	N. OF N. APPR STR #169				20.00					54		26				20.00						
9.98	615+50	DL SHLD	15	10	16.67	CL "A"	SHLDR CRACKED AND BROKEN				16.67					50		22				16.70						
10.06	606+25	PASSING	15	12	20.00	CL "A"	S. END OF S. APPR.				20.00					54		26				20.00						
10.35	590+97	DRIVING	15	12	20.00	CL "A"	N. OF N. APPR STR #167				20.00					54		26				20.00						
10.42	586+77	PASSING	15	12	20.00	CL "A"	S. OF S. APPR STR #167				20.00					54		26				20.00						
10.60	577+27	DRIVING	6	6	4.00	CL "A"	N OF MM 177	4.00								24		14				4.00						
10.68	573+04	DRIVING	6	6	4.00	CL "A"	N. OF STR. 166 OVHEAD	4.00								24		14				4.00						
15.36	325+94	DRIVING	6	6	4.00	CL "A"	S. END MONEY CREEK BRIDGE	4.00								24		14				4.00						
16.70	255+19	DRIVING	6	6	4.00	CL "A"	N. OF TOWANDA OFF RAMP		4.00								24		14			4.00						
17.80	197+11	DRIVING	6	6	4.00	CL "A"			4.00							24		14				4.00						
18.90	139+03	DRIVING	6	6	4.00	CL "A"			4.00							24		14				4.00						
19.20	123+19	DRIVING	6	12	8.00	CL "A"	END OF JOB WHERE PCC				8.00					36		26				8.00						
19.20	123+19	LT PASS	6	12	8.00	CL "A"	PVT BEGINS				8.00					36		26				8.00						
SUBTOTAL																1226.00	144.00	714.00	94.00	0.00	0.00	347.50	28.00					
TOTALS																	3164.0	216.0	1666.0	146.0	0.0	110.0	1031.0	44.0				
USE																3380.0				1922.0		1075.0						

MODEL: \\MODELNAME; FILE: \\NAME; PROJECT: \\PROJECT; CADD: \\CADD; DESIGN: \\DESIGN; DATE: 12/15/2017

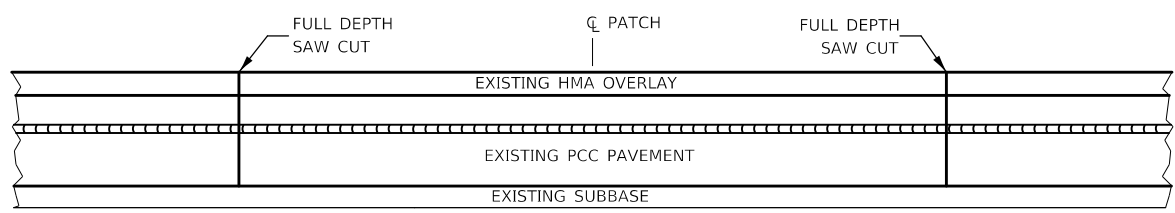
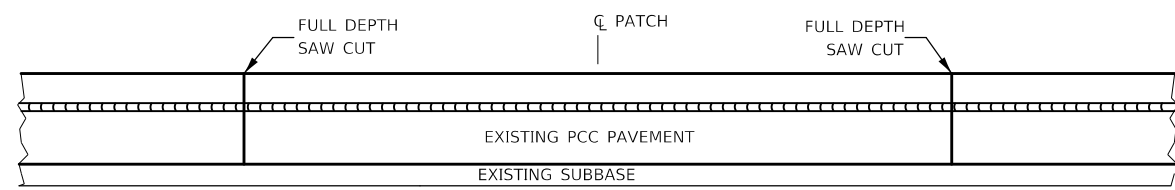
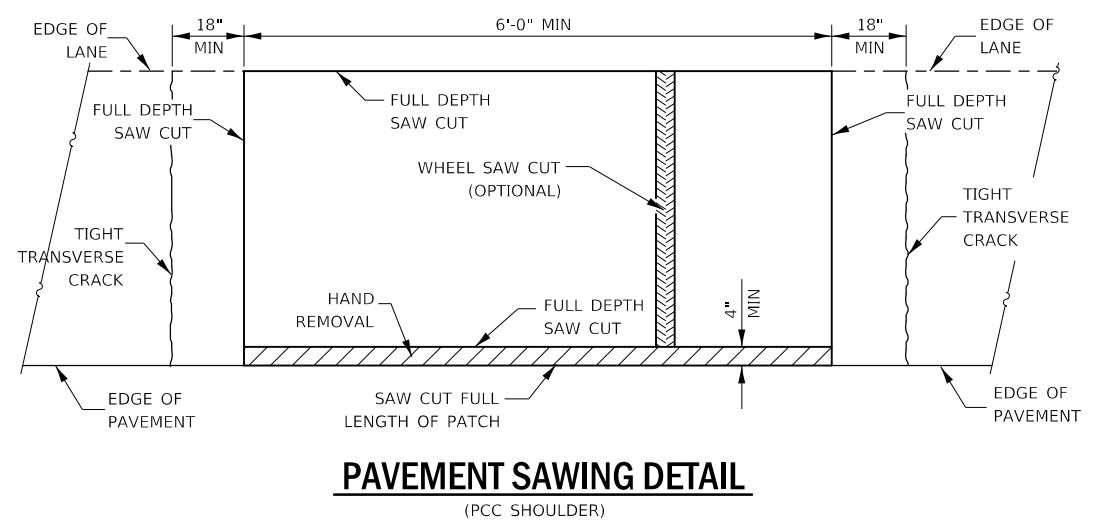
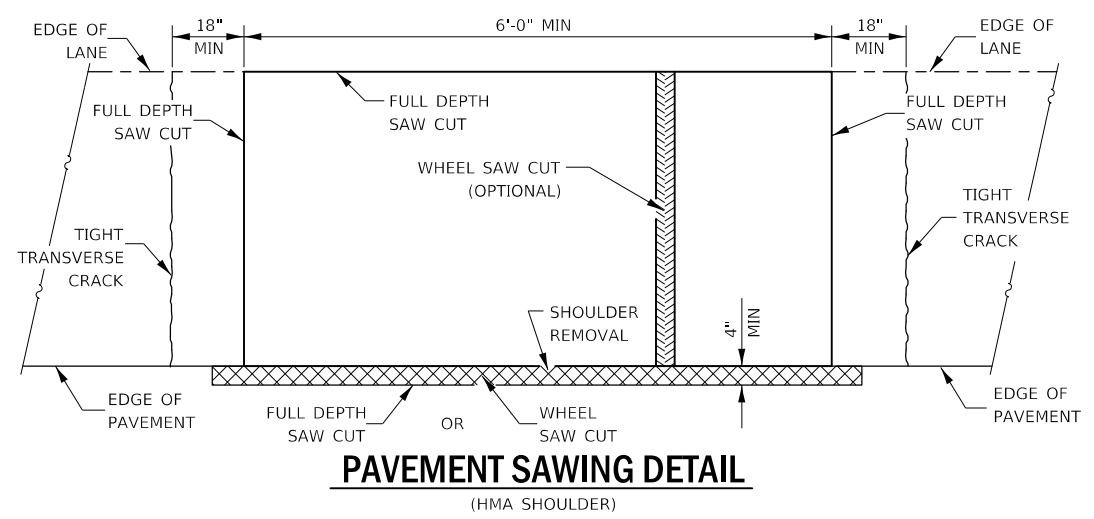
USER NAME = LEROYMA	DESIGNED -	REVISED -
	DRAWN -	REVISED -
PLOT SCALE = 40.0000 ' / in.	CHECKED -	REVISED -
PLOT DATE = 12/15/2017	DATE -	REVISED -

STATE OF ILLINOIS
DEPARTMENT OF TRANSPORTATION

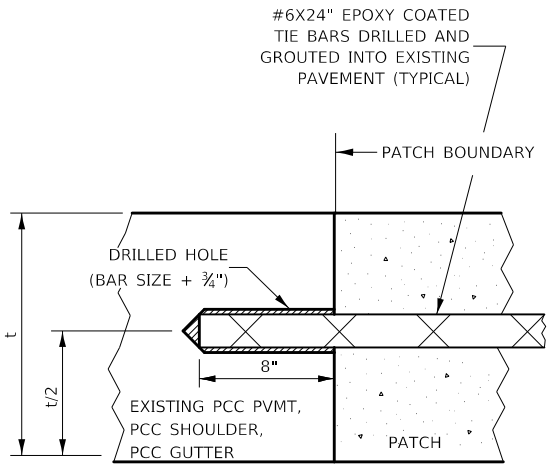
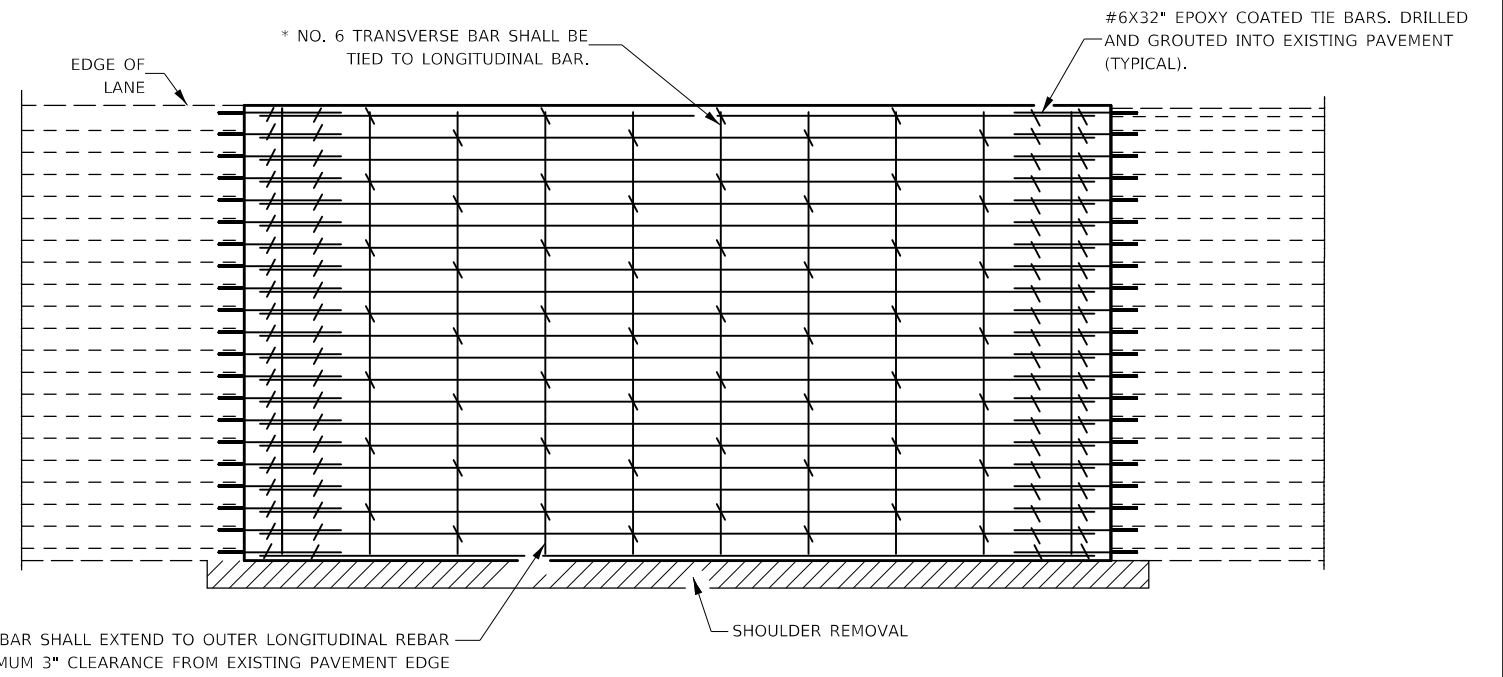
SCHEDULE OF QUANTITIES

SCALE: SHEET 6 OF 6 SHEETS STA. TO STA.

F.A.I. RTE.	SECTION	COUNTY	TOTAL SHEETS	SHEET NO.
55/74	D5 CM PATCHING 2018-1	MCLEAN	23	21
CONTRACT NO. 70D00				
ILLINOIS		FED. AID PROJECT		



PAVEMENT SAWING DETAIL FOR CLASS A PATCHING (CRC PAVEMENT)



LONGITUDINAL CONSTRUCTION JOINT

PATCHES MORE THAN 20' IN LENGTH SHALL BE TIED TO ADJACENT PAVEMENT, PCC SHOULDERS OR PCC CURB AND GUTTER WITH #6X24" EPOXY COATED TIE BARS AT 24" CENTERS.

NOTES:

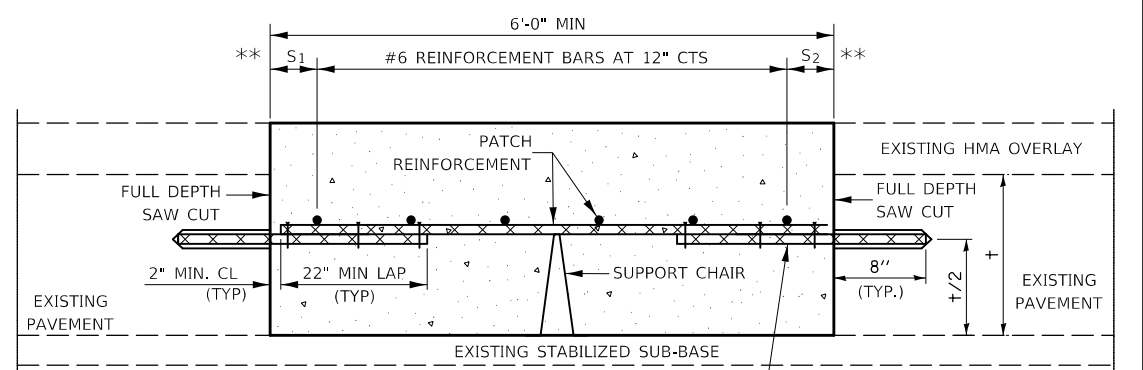
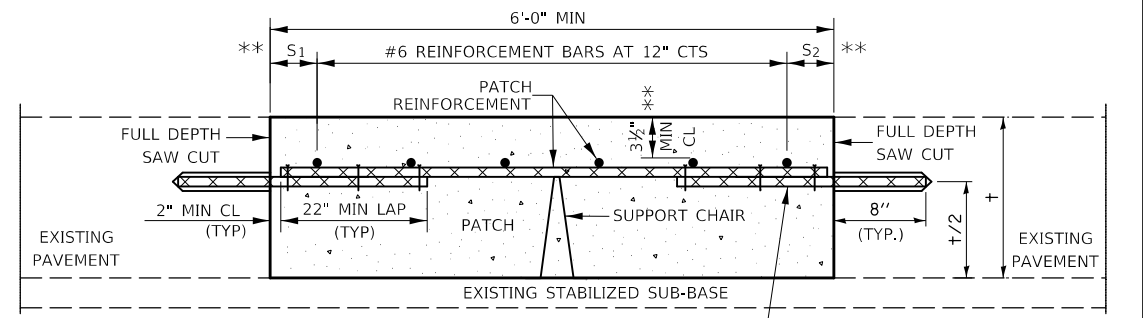
EXISTING LONGITUDINAL REINFORCEMENT SPACING: $\pm 6\frac{1}{2}$ ".

SPACING OF NEW LONGITUDINAL REINFORCEMENT AND NEW LONGITUDINAL TIE BARS SHALL MATCH SPACING OF EXISTING REINFORCEMENT AND SHALL BE TIED TOGETHER WITH A MINIMUM OF TWO TIES PER BAR.

SUPPORT CHAIRS SHALL BE REQUIRED WHENEVER PATCH LENGTH EXCEEDS 6'-0"

* EVERY THIRD INTERSECTION MUST BE TIED. WHEN THE MINIMUM CLEARANCE CANNOT BE OBTAINED WITH THE TRANSVERSE REBAR ON TOP, THEN THE TRANSVERSE REBAR SHALL BE TIED TO THE BOTTOM OF THE LONGITUDINAL REBAR.

** VARIABLES WHERE S₁ AND S₂ ARE 2½" MIN. AND 12" MAX.



PATCHING DETAIL FOR CLASS A PATCHING (CRC PAVEMENT)

MODEL: I:\MODEL\NAME: FILE: NAME: PROJECT: I:\PROJECTS\0570000\CADD\DATA\Design\0570000-sh-detailed.dgn

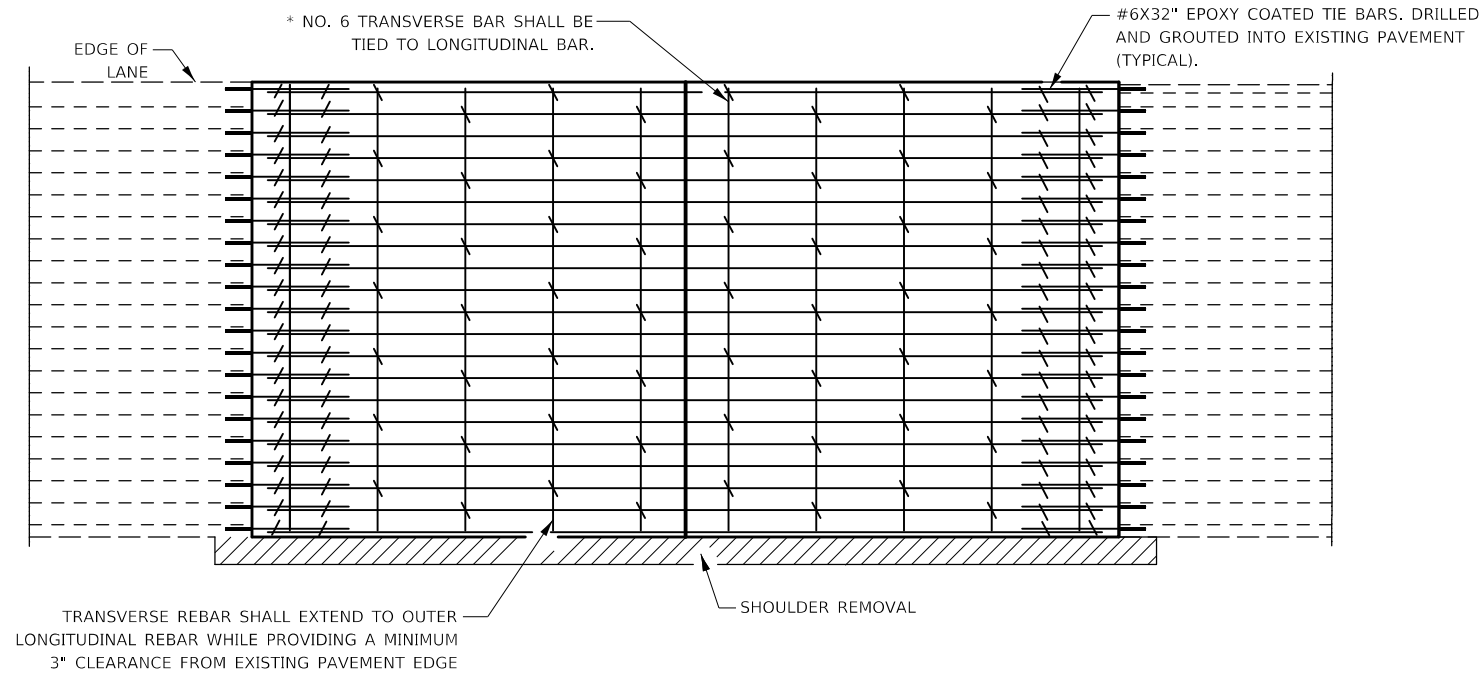
USER NAME = LEROYMA	DESIGNED -	REVISED -
	DRAWN -	REVISED -
PLOT SCALE = 100.0000' / in.	CHECKED -	REVISED -
PLOT DATE = 12/15/2017	DATE -	REVISED -

**STATE OF ILLINOIS
DEPARTMENT OF TRANSPORTATION**

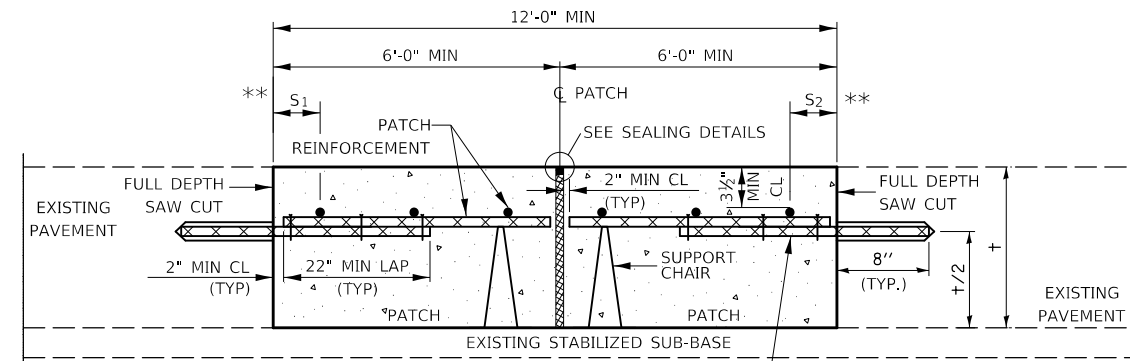
CLASS A PATCHING (SPECIAL)

SCALE: SHEET 1 OF 2 SHEETS STA. TO STA.

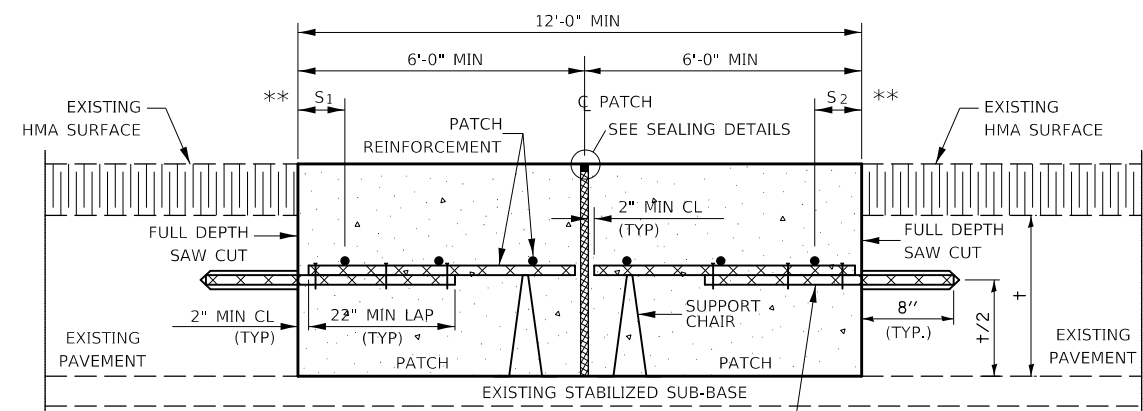
F.A.I. RTE.	SECTION	COUNTY	TOTAL SHEETS	SHEET NO.
55/74	D5 CM PATCHING 2018-1	MCLEAN	23	22
CONTRACT NO. 70D00				
ILLINOIS FED. AID PROJECT				



PAVEMENT REINFORCEMENT DETAIL

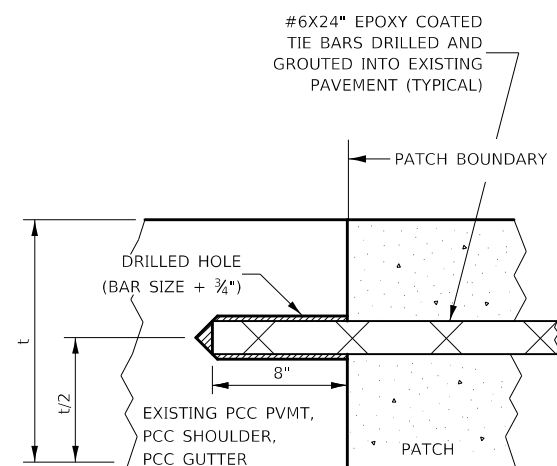


WITHOUT HMA OVERLAY



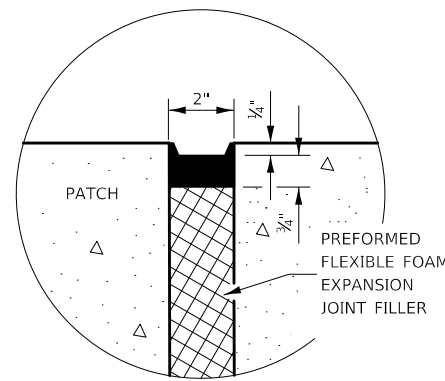
WITH HMA OVERLAY

CLASS A PATCH WITH EXPANSION JOINT

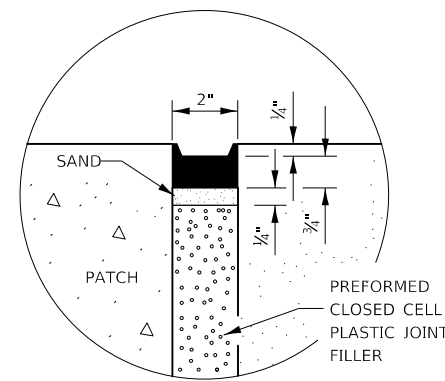


LONGITUDINAL CONSTRUCTION JOINT

PATCHES MORE THAN 20' IN LENGTH SHALL BE TIED TO ADJACENT PAVEMENT, PCC SHOULDERS OR PCC CURB AND GUTTER WITH #6x24" EPOXY COATED TIE BARS AT 36" CENTERS.



SEALING DETAIL



SEALING DETAIL

NOTES:

EXISTING LONGITUDINAL REINFORCEMENT SPACING; $\pm 6\frac{1}{2}$ ".

SPACING OF NEW LONGITUDINAL REINFORCEMENT AND NEW LONGITUDINAL TIE BARS SHALL MATCH SPACING OF EXISTING REINFORCEMENT AND SHALL BE TIED TOGETHER WITH A MINIMUM OF TWO TIES PER BAR.

SUPPORT CHAIRS SHALL BE REQUIRED WHENEVER PATCH LENGTH EXCEEDS 6'-0"

* EVERY THIRD INTERSECTION MUST BE TIED. WHEN THE MINIMUM CLEARANCE CANNOT BE OBTAINED WITH THE TRANSVERSE REBAR ON TOP, THEN THE TRANSVERSE REBAR SHALL BE TIED TO THE BOTTOM OF THE LONGITUDINAL REBAR.

** VARIABLES WHERE S₁ AND S₂ ARE 2 $\frac{1}{2}$ " MIN. AND 12" MAX.

MODEL: 440061.MXD FILE NAME: P:\PROJECTS\0570000\CADD\DATA\Design\0570000-eh-detailed.dgn

USER NAME = LEROYMA	DESIGNED -	REVISED -
	DRAWN -	REVISED -
PLOT SCALE = 100,0000' / in.	CHECKED -	REVISED -
PLOT DATE = 12/15/2017	DATE -	REVISED -

**STATE OF ILLINOIS
DEPARTMENT OF TRANSPORTATION**

CLASS A PATCHING (SPECIAL)

SCALE: SHEET 2 OF 2 SHEETS STA. TO STA.

F.A.I. RTE.	SECTION	COUNTY	TOTAL SHEETS	SHEET NO.
55/74	D5 CM PATCHING 2018-1	MCLEAN	23	23
CONTRACT NO. 70D00				
ILLINOIS FED. AID PROJECT				