

STATE OF ILLINOIS
DEPARTMENT OF TRANSPORTATION

F.A.P. RTE.	SECTION	COUNTY	TOTAL SHEETS	SHEET NO.
304	(402,403,404,405)RS-3	MADISON	16	1
		ILLINOIS	CONTRACT NO. 76L32	

INDEX OF SHEETS

- 1 COVER SHEET
- 2 GENERAL NOTES, COMMITMENTS, MIXTURE DESIGN
- 3-4 SUMMARY OF QUANTITIES
- 5-8 EXISTING TYPICAL SECTIONS
- 9-12 PROPOSED TYPICAL SECTIONS
- 13 SCHEDULE OF QUANTITIES
- 14 LOCATION MAP
- 15-16 ADA IMPROVEMENT DETAILS

HIGHWAY STANDARDS

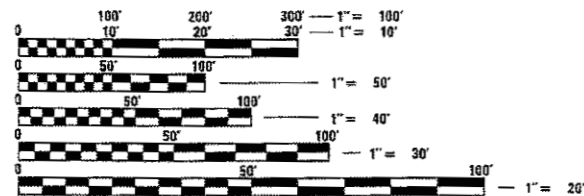
- 000001-06 STANDARD SYMBOLS, ABBREVIATIONS AND PATTERNS
- 001006 DECIMAL OF AN INCH AND OF A FOOT
- 606001-07 CONCRETE CURB TYPE B AND COMBINATION CONCRETE CURB AND GUTTER TYPE A GUTTER
- 606101-05 LANE CLOSURE, MULTILANE, DAY OPERATIONS ONLY, FOR SPEEDS \leq 45MPH TO 55 MPH
- 701421-08 LANE CLOSURE, MULTILANE, FOR SPEEDS \geq 45 MPH TO 55 MPH
- 701422-10 LANE CLOSURE, MULTILANE INTERMITTENT OR MOVING OPER., FOR SPEEDS \geq 45 MPH
- 701426-09 LANE CLOSURE, MULTILANE INTERMITTENT OR MOVING OPER., FOR SPEEDS \leq 55 MPH
- 701427-05 URBAN LANE CLOSURE, MULTILANE, 1 W OR 2W WITH NONTRAVERSABLE MEDIAN
- 701601-09 URBAN SINGLE LANE CLOSURE, MULTILANE, 2W WITH MOUNTABLE MEDIAN
- 701611-01 URBAN HALF ROAD CLOSURE, MULTILANE, 2W WITH MOUNTABLE MEDIAN
- 701701-10 URBAN LANE CLOSURE, MULTILANE INTERSECTION
- 701801-06 SIDEWALK, CORNER OR CROSSWALK CLOSURE
- 701901-07 TRAFFIC CONTROL DEVICES
- 780001-05 TYPICAL PAVEMENT MARKINGS

TRAFFIC DATA

FUNCTIONAL CLASSIFICATION: URBAN MINOR ARTERIAL

FROM START TO CLIFTON TERRACE:
2017 ADT = 6450 (ACTUAL)
2018 ADT = 6500 (ESTIMATED)
SU = 15.1% MU = 3.1%

FROM CLIFTON TERRACE TO END:
2017 ADT = 4900 (ACTUAL)
2018 ADT = 5000 (ESTIMATED)
SU = 7.7% MU = 2.9%



FULL SIZE PLANS HAVE BEEN PREPARED USING STANDARD ENGINEERING SCALES. REDUCED SIZED PLANS WILL NOT CONFORM TO STANDARD SCALES. IN MAKING MEASUREMENTS ON REDUCED PLANS, THE ABOVE SCALES MAY BE USED.

J.U.L.I.E.
JOINT UTILITY LOCATION INFORMATION FOR EXCAVATION
1-800-892-0123
OR 811

PROJECT ENGINEER TIM PADGETT 618-346-3325
PROJECT MANAGER PHIL COPPERNOLL 618-346-3480

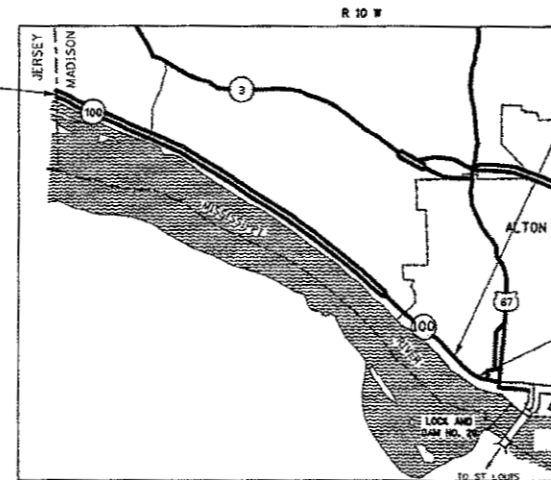
CONTRACT NO. 76L32

**PROPOSED
HIGHWAY PLANS**

FAP ROUTE 304 (IL 100)
SECTION (402, 403, 404, 405)RS-3
FROM JERSEY COUNTY LINE TO 0.1 MILES NORTH OF STATE STREET
MICRO SURFACING - SINGLE-PASS
MADISON COUNTY

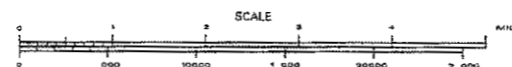
C-98-180-18

END PROJECT
M.S. 5.56
LAT. 38.935123°N
LONG. 90.275717°W

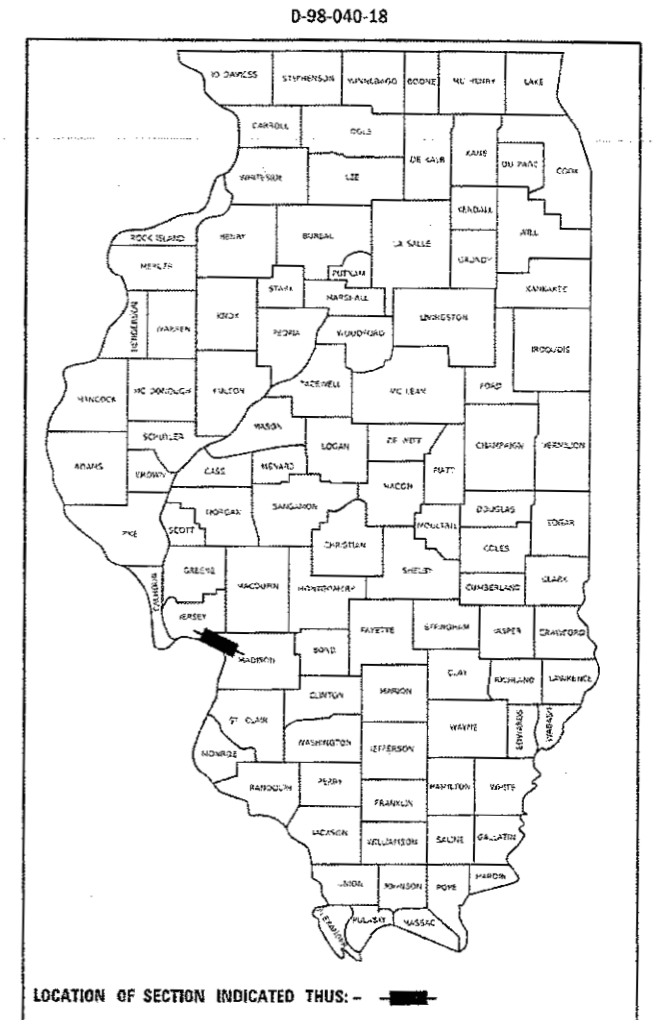


RAILROAD OMISSION
M.S. 0.214 TO M.S. 0.225

BEGIN PROJECT
M.S. 0.0
LAT. 38.890921°N
LONG. 90.190951°W



GROSS LENGTH = 29,358 FT. = 5.56 MILE
NET LENGTH = 29,338 FT. = 5.56 MILE



STATE OF ILLINOIS
DEPARTMENT OF TRANSPORTATION

SUBMITTED *Dec 8 2017*

Jeffrey E. K... REGIONAL ENGINEER

Feb 2 2018
ENGINEER OF DESIGN AND ENVIRONMENT

Paul P. Ch... DIRECTOR OF PROGRAM DEVELOPMENT

PRINTED BY THE AUTHORITY
OF THE STATE OF ILLINOIS

GENERAL NOTES:

- ① ILLINOIS STATE LAW REQUIRES A 48-HOUR NOTICE TO BE GIVEN TO ALL UTILITIES WITHIN THE PROJECT AREA BEFORE DIGGING. FIELD MARKING OF FACILITIES MAY BE OBTAINED BY CONTACTING J.U.L.I.E. OR FOR NON-MEMBERS, THE UTILITY COMPANY DIRECTLY. AGENCIES KNOWN TO HAVE FACILITIES WITHIN THE PROJECT AREA ARE AS FOLLOWS:

	AERIAL	BURIED
*CITY OF ALTON (STORM SEWER)		X
*CITY OF ALTON (LIGHTING, PEDESTRIAN PUSH BUTTON)	X	X
*AMEREN ILLINOIS (GAS & ELECTRIC)	X	X
*AT&T ILLINOIS (COMMUNICATIONS)	X	X
*CHARTER COMMUNICATIONS, INC. (CABLE TV)	X	X
*VILLAGE OF GODFREY (SANITARY SEWER)		X
*ILLINOIS AMERICAN WATER COMPANY (WATER)		X

MEMBERS OF J.U.L.I.E. CALL TOLL FREE (800) 892-0123 OR 811 AND ARE INDICATED BY *. NON-J.U.L.I.E. MEMBERS MUST BE NOTIFIED INDIVIDUALLY.
- ② THE CONTRACTOR AND THE ENGINEER SHALL BE AWARE THAT NO SURVEY WAS PERFORMED FOR THIS PROJECT. THE STATIONING, TOPOGRAPHY, AND QUANTITIES SHOWN IN THE PLANS WERE CREATED USING MICROFILM AND FIELD MEASUREMENTS. ALL SHALL BE ASSUMED TO BE APPROXIMATE. THE CONTRACTOR SHALL VERIFY DIMENSIONS AND CONDITIONS IN THE FIELD PRIOR TO CONSTRUCTION AND ORDERING OF MATERIALS.
- ③ THE ILLINOIS DEPARTMENT OF TRANSPORTATION STRONGLY ENCOURAGES THE PRIME CONTRACTOR AND THEIR APPROVED SUB-CONTRACTORS TO HIRE MINORITY, WOMEN AND DISADVANTAGED INDIVIDUALS FROM ITS FEDERALLY FUNDED HIGHWAY CONSTRUCTION CAREERS TRAINING PROGRAM (HCCTP) TO HELP MEET WORKFORCE AND TRAINEE GOALS. THIS PROGRAM IS TRAINING MINORITIES, WOMEN AND DISADVANTAGED INDIVIDUALS IN HIGHWAY CONSTRUCTION-RELATED SKILLS, E.G., MATH FOR THE TRADES, JOB READINESS, TECHNICAL SKILLS COURSEWORK (CARPENTRY, CONCRETE FLATWORK, BLUEPRINT READING, SITE PLANS, SITE WORK, TOOLS USE, ETC.) AND OSHA 10 HOUR CERTIFICATION, TO PREPARE THEM FOR A CAREER IN THE HIGHWAY CONSTRUCTION TRADES. GRADUATES ARE WELL-TRAINED AND READY TO BECOME PRODUCTIVE ENTRY-LEVEL CONSTRUCTION WORKERS. PLEASE CONTACT THE DISTRICT 8 EEO OFFICE AT 618-346-3360 AND/OR THE HCCTP COORDINATOR AT 618-874-6528 TO LEARN MORE ABOUT THE PROGRAM AND FOR ASSISTANCE IN MEETING WORKFORCE AND TRAINEE GOALS.
- ④ AN ESTIMATED QUANTITY OF 13,210 FEET OF FIBER-MODIFIED ASPHALT CRACK SEALING HAS BEEN ADDED TO THE PLANS. EXACT LOCATIONS WILL BE DETERMINED BY THE ENGINEER.
- ⑤ NO OVERNIGHT LANE CLOSURES WILL BE PERMITTED UNLESS IF THE CONTRACTOR IS WORKING AT NIGHT.
- ⑥ THE PROPOSED PAVEMENT MARKINGS SHALL MATCH THE LOCATIONS OF THE EXISTING PAVEMENT MARKINGS, AS DIRECTED BY THE ENGINEER.
- ⑦ ALL AREAS DISTURBED FOR ANY REASON SHALL BE PERMANENTLY SEEDED AS DIRECTED BY THE ENGINEER. ALL AREAS DISTURBED BY THE CONTRACTOR OUTSIDE THE PROPOSED CONSTRUCTION LIMITS SHALL BE SEEDED AT THE CONTRACTOR'S EXPENSE.
- ⑧ FLAGGERS SHALL BE PRESENT DURING ALL CLOSURE HOURS INCLUDING LUNCH HOUR AND NO ADDITIONAL COMPENSATIONS SHALL BE ALLOWED.
- ⑨ THE CONTRACTOR SHALL PROTECT ALL SURVEY MONUMENTS TO ENSURE THEY ARE VISIBLE UPON COMPLETION OF THE MICROSURFACING. THE PROCESS ESTABLISHED BY THE CONTRACTOR SHALL BE APPROVED BY THE RESIDENT ENGINEER PRIOR TO CONSTRUCTION AND THE COST FOR THIS WORK SHALL BE INCLUDED IN THE COST OF THE MICROSURFACING.
- ⑩ THE AGGREGATES FOR THE MICRO-SURFACING SHALL MEET THE FRICTION AGGREGATE REQUIREMENTS FOR MIXTURE "D" IN ARTICLE 1004.03 (A)
- ⑪ ALL SHORT TERM PAVEMENT MARKING AND TEMPORARY PAVEMENT MARKING SHALL BE REMOVABLE TAPE.
- ⑫ ALL DISTURBED OR EXCAVATED EARTH ASSOCIATED WITH THE REMOVAL/REPLACEMENT OF THE TYPE A GUTTER AND/OR SIDEWALK SHALL BE USED TO FILL BEHIND THE PROPOSED CURB AND GUTTER AS DIRECTED BY THE ENGINEER. NO SOIL SHALL BE REMOVED FROM THE SITE.
- ⑬ REVISE STANDARD SPECIFICATIONS ARTICLE 107.12, PARAGRAPH 5, LAST SENTENCE TO READ: "ALL OTHER RAILROAD FLAGGER COSTS WILL BE INCURRED BY THE DEPARTMENT ACCORDING TO ARTICLE 109.05."
- ⑭ ONE CHANGEABLE MESSAGE SIGN SHALL BE PLACED IN EACH DIRECTION APPROXIMATELY TWO WEEKS PRIOR TO CONSTRUCTION. THE LOCATIONS OF THE SIGNS SHALL BE AS DIRECTED BY THE ENGINEER.

COMMITMENTS

NONE

MIXTURE REQUIREMENTS

ROUTE	FAP 304 (IL 100)
SECTION	(402, 403, 404, 405)RS-3
COUNTY	Madison
CONTRACT	76L32

DESCRIPTION:	Single-pass Micro-Surfacing - IL 100 from 0.1 miles North of State St. in Alton to Jersey County Line
--------------	---

ADT (Construction Yr):	5350
MU%:	4.58
SU%:	2.99
20 YR. ESAL'S:	1.69

MIXTURE USE	Friction Agg Type
AC/PG	
RAP % (MAX)	
DESIGN AIR VOIDS	
MIX COMPOSITION (Gradation)	
FRICTION AGG	MIXTURE "D"
QUALITY MGMT PROGRAM	

Plan quantities for Bituminous Concrete Surface Course items are calculated using a unit weight of 112 lb/sq yd/in (59.8 kg/sq m/25 mm thickness).

MODEL: Default
 FILE: \\hpc01\B&E\BID\NTEC\Illinois\gov\p\WIDOT\Documents\BIDOT_Offices\BIDirect_8\Projects\08761321\CAD\data\CAD\sheet\08761321-8-9-gencore.dgn

	USER NAME = Copperm\PE	DESIGNED -	REVISED -	STATE OF ILLINOIS DEPARTMENT OF TRANSPORTATION	GENERAL NOTES, COMMITMENTS AND MIXTURE REQUIREMENTS	F.A.P RTE.	SECTION	COUNTY	TOTAL SHEETS	SHEET NO.	
		DRAWN -	REVISED -			304	(402,403,404,405)RS-3	MADISON	16	2	
	PLOT SCALE = 100,0000 ' / in.	CHECKED -	REVISED -			CONTRACT NO. 76L32					
	PLOT DATE = 1/2/2018	DATE -	REVISED -			SCALE:	SHEET 1	OF 1	SHEETS	STA.	TO STA.

CODE NO.	ITEM	UNIT	100% STATE TOTAL QUANTITY	CONSTRUCTION CODE	
				ROADWAY 0005 URBAN	ROADWAY 0021 URBAN
				40400001	FIBER-MODIFIED ASPHALT CRACK SEALING
40400200	BUMP REMOVAL	EACH	12	12	
40400114	MICRO-SURFACING, SINGLE PASS, TYPE II, MIXTURE D	SQ YD	150533	150533	
40600290	BITUMINOUS MATERIALS (TACK COAT)	POUND	33870	33870	
42400100	PORTLAND CEMENT CONCRETE SIDEWALK 4 INCH	SQ FT	361.5		361.5
42400800	DETECTABLE WARNINGS	SQ FT	20		20
44000600	SIDEWALK REMOVAL	SQ FT	361.5		361.5
60602500	CONCRETE GUTTER, TYPE A	FOOT	5		5
67000400	ENGINEER'S FIELD OFFICE, TYPE A	CAL MO	2	2	
67100100	MOBILIZATION	L SUM	1	1	
70100310	TRAFFIC CONTROL AND PROTECTION, STANDARD 701421	L SUM	1	1	
70100320	TRAFFIC CONTROL AND PROTECTION, STANDARD 701422	L SUM	1	1	
70102625	TRAFFIC CONTROL AND PROTECTION, STANDARD 701606	L SUM	1	1	
70102630	TRAFFIC CONTROL AND PROTECTION, STANDARD 701601	L SUM	1	1	

CODE NO.	ITEM	UNIT	100% STATE TOTAL QUANTITY	CONSTRUCTION CODE	
				ROADWAY 0005 URBAN	ROADWAY 0021 URBAN
				70102634	TRAFFIC CONTROL AND PROTECTION, STANDARD 701611
70102635	TRAFFIC CONTROL AND PROTECTION, STANDARD 701701	L SUM	1	1	
70102640	TRAFFIC CONTROL AND PROTECTION, STANDARD 701801	L SUM	1	1	
70300100	SHORT TERM PAVEMENT MARKING	FOOT	8732	8732	
70300150	SHORT TERM PAVEMENT MARKING REMOVAL	SQ FT	2911	2911	
70300210	TEMPORARY PAVEMENT MARKING LETTERS AND SYMBOLS	SQ FT	276	276	
70300220	TEMPORARY PAVEMENT MARKING - LINE 4'	FOOT	132447	132447	
70300260	TEMPORARY PAVEMENT MARKING - LINE 12'	FOOT	350	350	
* 70300280	TEMPORARY PAVEMENT MARKING - LINE 24'	FOOT	204	204	
* 78000100	THERMOPLASTIC PAVEMENT MARKING - LETTERS AND SYMBOLS	SQ FT	276	276	
* 78000200	THERMOPLASTIC PAVEMENT MARKING - LINE 4'	FOOT	132447	132447	
* 78000600	THERMOPLASTIC PAVEMENT MARKING - LINE 12'	FOOT	350	350	
* 78000650	THERMOPLASTIC PAVEMENT MARKING - LINE 24'	FOOT	204	204	
X0327980	PAVEMENT MARKING REMOVAL - WATER BLASTING	SQ FT	45183	45183	

* SPECIALTY ITEM

MODEL: Default
FILE NAME: p:\11\04\EB\01\TEC\illinois.pvt\PROJECT\DOCUMENTS\DOT OFFICES\DISTRICT 0\PROJECTS\0470\32\CA\CD\DATA\CD\B\me\0876132-ht-500.dgn

14

USER NAME = CopperHillPE	DESIGNED -	REVISED -
PLOT SCALE = 100.0000' / in.	DRAWN -	REVISED -
PLOT DATE = 12/19/2017	CHECKED -	REVISED -
	DATE -	REVISED -

**STATE OF ILLINOIS
DEPARTMENT OF TRANSPORTATION**

SUMMARY OF QUANTITIES			
SCALE:	SHEET 1	OF 2	SHEETS
	STA.		TO STA.

F.A.P RTE. 304	SECTION (402.403.404.405)RS-3	COUNTY MADISON	TOTAL SHEETS 16	SHEET NO. 3
CONTRACT NO. 76L32				
ILLINOIS FED. AID PROJECT				

CODE NO.	ITEM	UNIT	TOTAL QUANTITY	CONSTRUCTION CODE	
				ROADWAY	ROADWAY
				0005	0021
X7015005	CHANGEABLE MESSAGE SIGN	CAL DAY	30	30	
X3000001	RRPM PROTECTION	EACH	952	952	
X6061610	COMBINATION CONCRETE CURB AND GUTTER, TYPE B (MODIFIED)	FOOT	75		75
X7030005	TEMPORARY PAVEMENT MARKING REMOVAL	SQ FT	45183	45183	
Ø 20076004	TRAINEES TRAINING PROGRAM GRADUATE	HOVR	500	500	
Z0048665	RAILROAD PROTECTIVE LIABILITY INSURANCE	L SUM	1	1	

100%
STATE

4

Ø 0042

MODEL: D:\6411\041818\INTEG Illinois.gov\PIB\DOT\Documents\DOT - Office\District - 81\Projects\1327613\CA\State\CAD\Sheet\076132-sh1-50.dgn

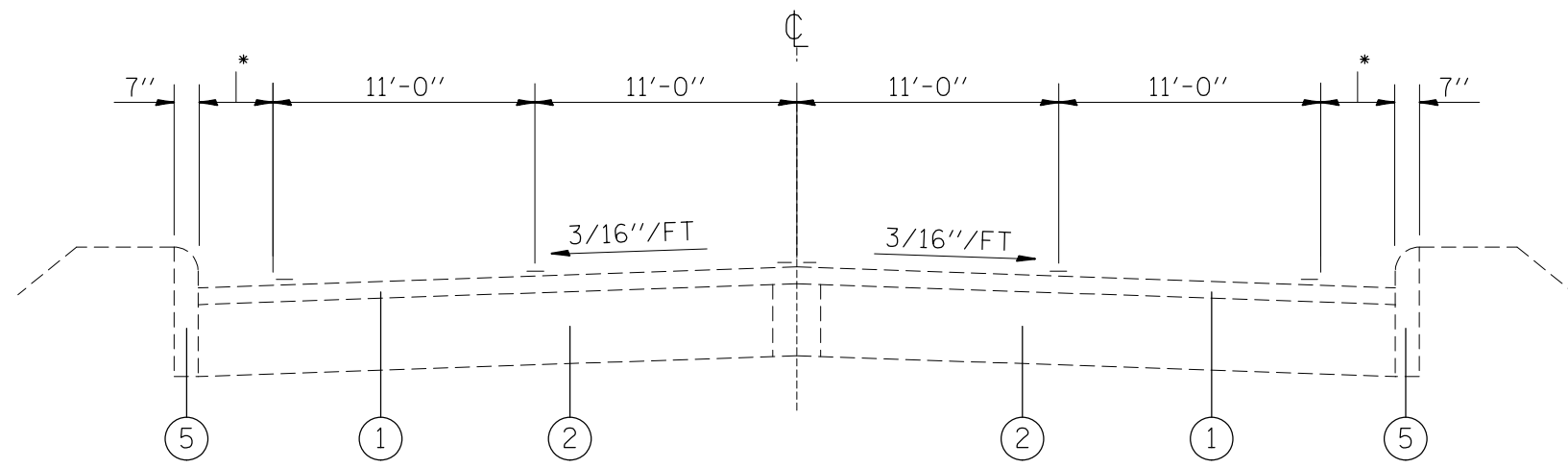
USER NAME = Copperno\PE	DESIGNED -	REVISED -
	DRAWN -	REVISED -
PLOT SCALE = 100.0000 ' / in.	CHECKED -	REVISED -
PLOT DATE = 12/19/2017	DATE -	REVISED -

**STATE OF ILLINOIS
DEPARTMENT OF TRANSPORTATION**

SUMMARY OF QUANTITIES

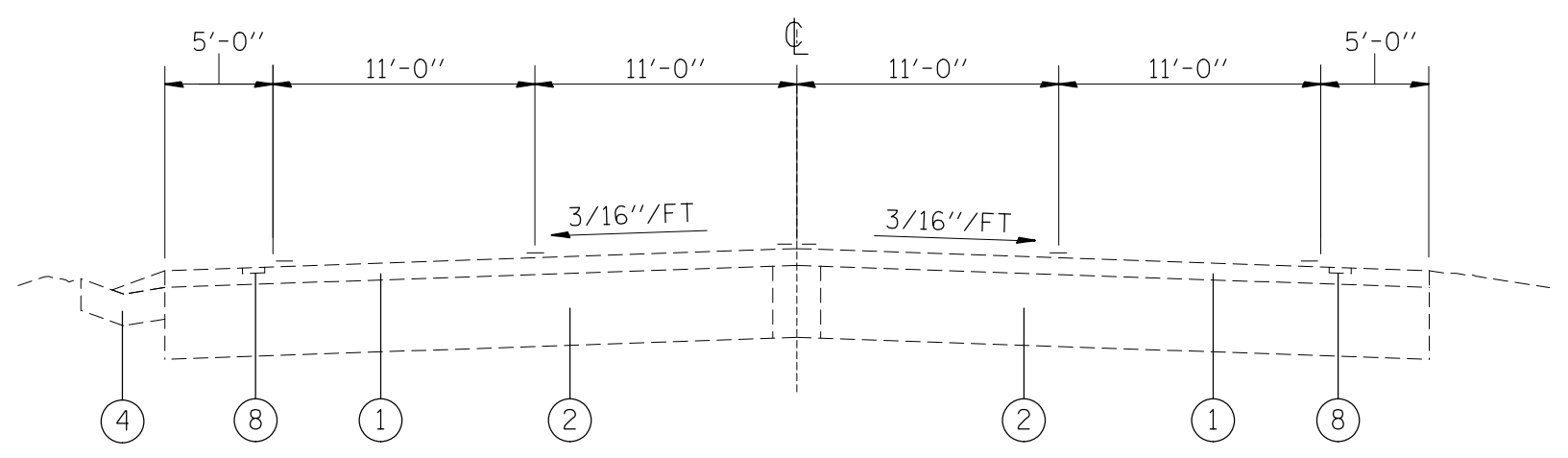
SCALE: SHEET 2 OF 2 SHEETS STA. TO STA.

F.A.P. RTE.	SECTION	COUNTY	TOTAL SHEETS	SHEET NO.
304	(402,403,404,405)RS-3	MADISON	16	4
ILLINOIS FED. AID PROJECT			CONTRACT NO. 76L32	

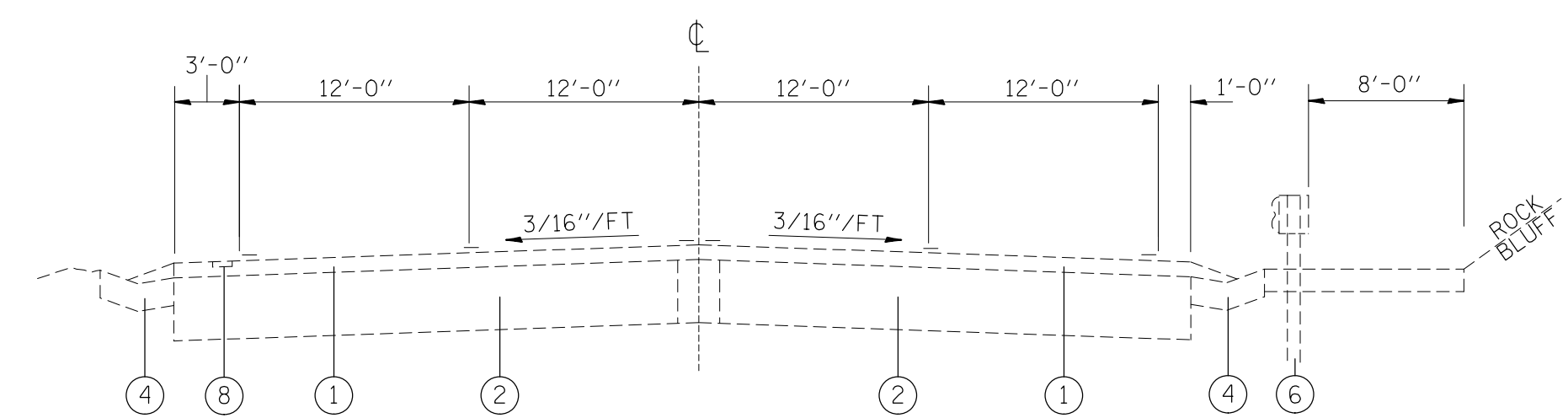


TYPICAL SECTION
M.S. 0.0 TO M.S. 0.529

* VARIES 4'-0" FROM M.S. 0.0 TO M.S. 0.37
TO 5'-0" FROM M.S. 0.37 TO M.S. 0.52



TYPICAL SECTION
M.S. 0.529 TO M.S. 0.685



TYPICAL SECTION
M.S. 0.685 TO M.S. 0.801

LEGEND

- ① EXISTING HOT-MIX ASPHALT SURFACE COURSE
- ② EXISTING BITUMINOUS PAVEMENT
- ③ EXISTING HOT-MIX ASPHALT SHOULDER
- ④ EXISTING CONCRETE GUTTER, TYPE B
- ⑤ EXISTING COMBINATION CONCRETE CURB
- ⑥ EXISTING GUARDRAIL
- ⑦ EXISTING STEEL PLATE BEAM GUARDRAIL, TYPE D
- ⑧ EXISTING RUMBLE STRIP, 8"
- ⑨ EXISTING CONCRETE MEDIAN
- ⑩ PROPOSED THERMOPLASTIC PAVEMENT MARKING
- ⑪ PROPOSED BITUMINOUS MATERIALS (TACK COAT)
- ⑫ PROPOSED MICRO-SURFACING, SINGLE PASS, TYPE II, MIXTURE D

MODEL: Default
 FILE: Name: p:\ullob\B&E\BID\NTEC\Illinois\pov\PIV\DOT\Documents\1\DOT_Offices\1\08761321\CADD\DATA\CAD\Sheet\08761321\11-17-17\11-17-17.dgn

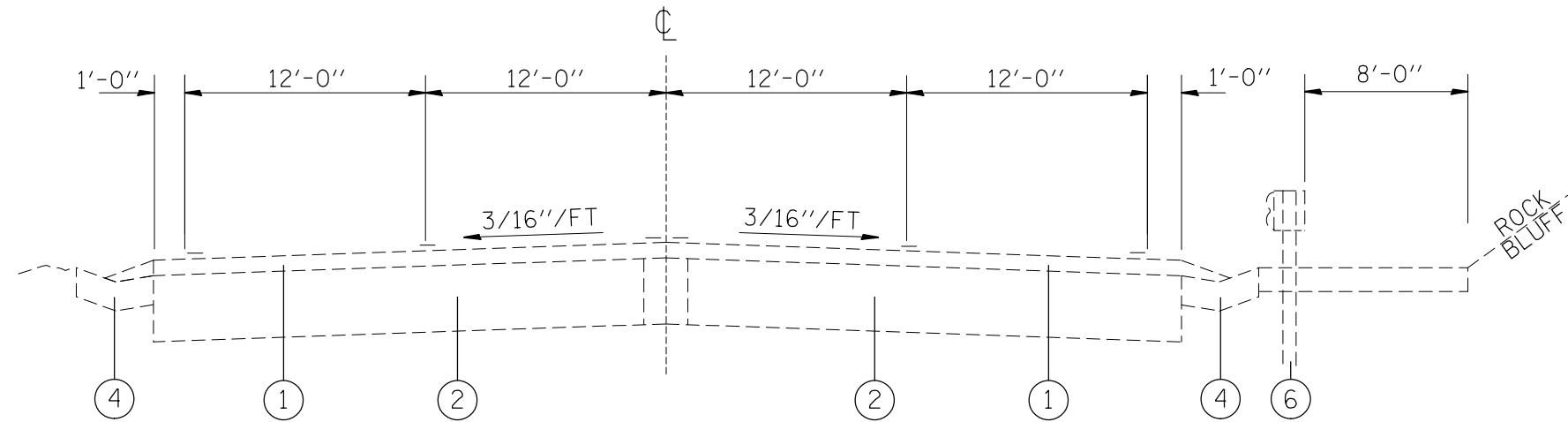
USER NAME = CopperMPE	DESIGNED -	REVISED -
PLOT SCALE = 100.0000' / in.	DRAWN -	REVISED -
PLOT DATE = 12/8/2017	CHECKED -	REVISED -
	DATE -	REVISED -

STATE OF ILLINOIS
DEPARTMENT OF TRANSPORTATION

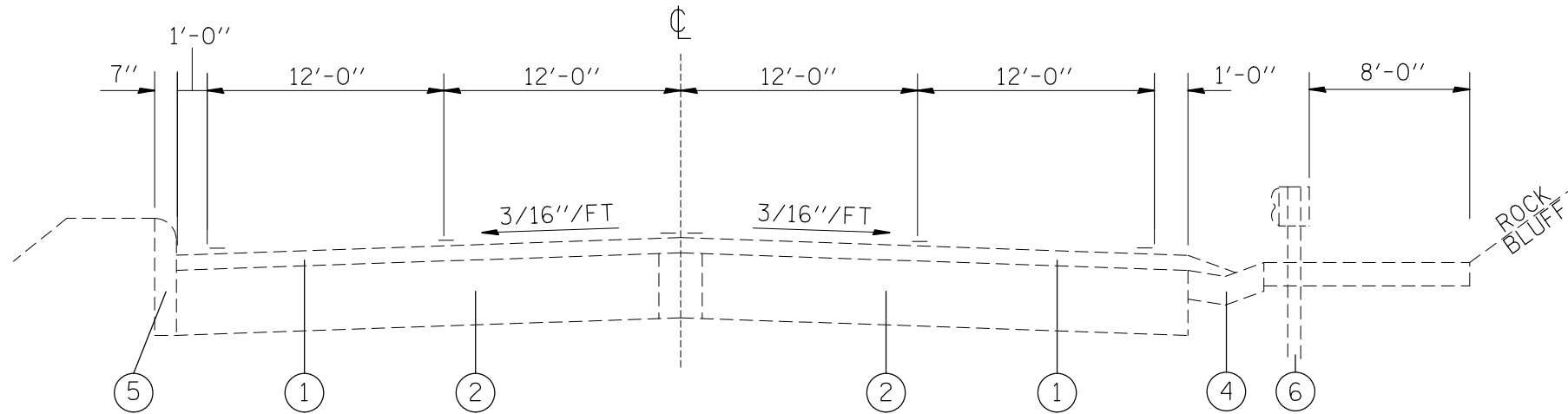
EXISTING TYPICAL SECTIONS

SCALE: SHEET 1 OF 4 SHEETS STA. TO STA.

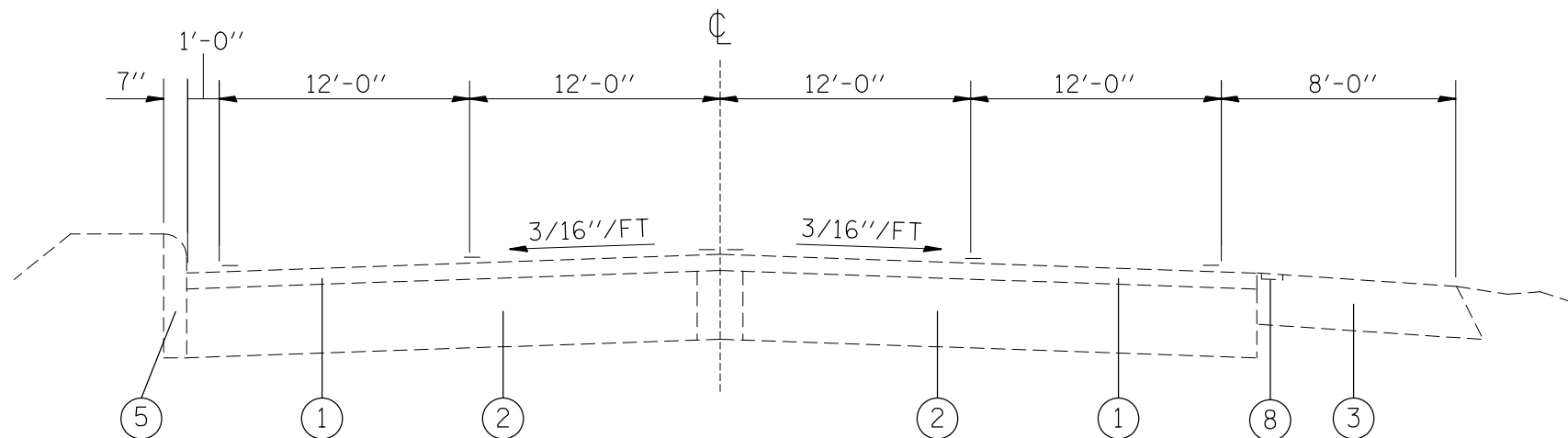
F.A.P. RTE.	SECTION	COUNTY	TOTAL SHEETS	SHEET NO.
304	(402,403, 404, 405)RS-3	MADISON	16	5
CONTRACT NO. 76L32			ILLINOIS FED. AID PROJECT	



TYPICAL SECTION
M.S. 0.801 TO M.S. 0.910



TYPICAL SECTION
M.S. 0.910 TO M.S. 1.062



TYPICAL SECTION
M.S. 1.062 TO M.S. 1.26

LEGEND

- ① EXISTING HOT-MIX ASPHALT SURFACE COURSE
- ② EXISTING BITUMINOUS PAVEMENT
- ③ EXISTING HOT-MIX ASPHALT SHOULDER
- ④ EXISTING CONCRETE GUTTER, TYPE B
- ⑤ EXISTING COMBINATION CONCRETE CURB
- ⑥ EXISTING GUARDRAIL
- ⑦ EXISTING STEEL PLATE BEAM GUARDRAIL, TYPE D
- ⑧ EXISTING RUMBLE STRIP, 8"
- ⑨ EXISTING CONCRETE MEDIAN
- ⑩ PROPOSED THERMOPLASTIC PAVEMENT MARKING
- ⑪ PROPOSED BITUMINOUS MATERIALS (TACK COAT)
- ⑫ PROPOSED MICRO-SURFACING, SINGLE PASS, TYPE II, MIXTURE D

MODEL: Default
 FILE: \\mhc-pw\ulc08a\BID\NTEC\Illinois\pwr\pwr\DOT\Documents\1\DOT_Offices\Director\B\Projects\0876L32\CADD\data\CAD\headers\0876L32\ht-tp\tdc.dgn

USER NAME = CopperMPE	DESIGNED -	REVISED -
	DRAWN -	REVISED -
PLOT SCALE = 100.0000 ' / in.	CHECKED -	REVISED -
PLOT DATE = 12/8/2017	DATE -	REVISED -

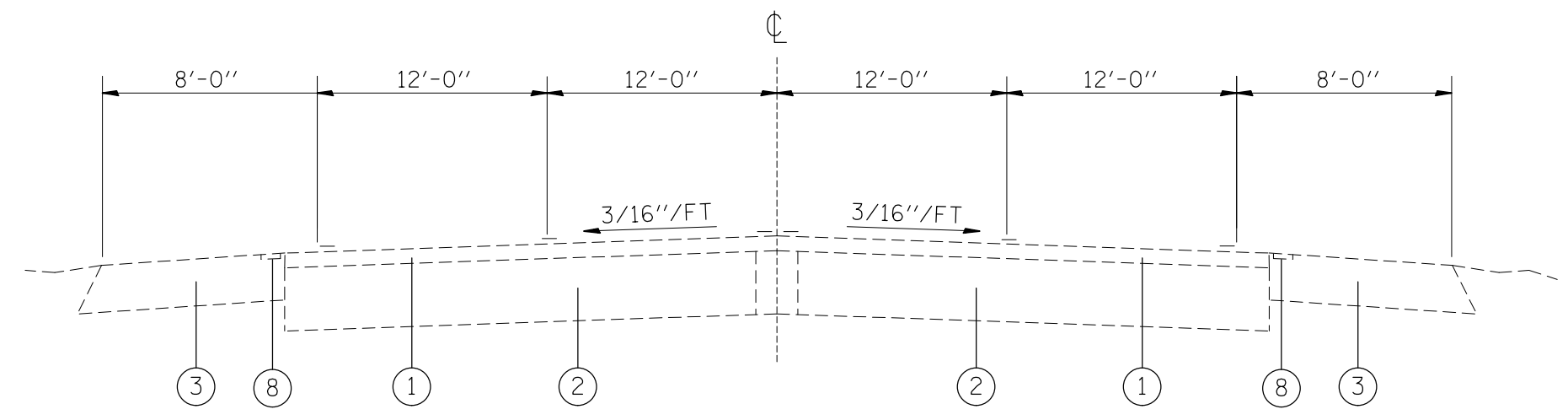
STATE OF ILLINOIS
DEPARTMENT OF TRANSPORTATION

EXISTING TYPICAL SECTIONS

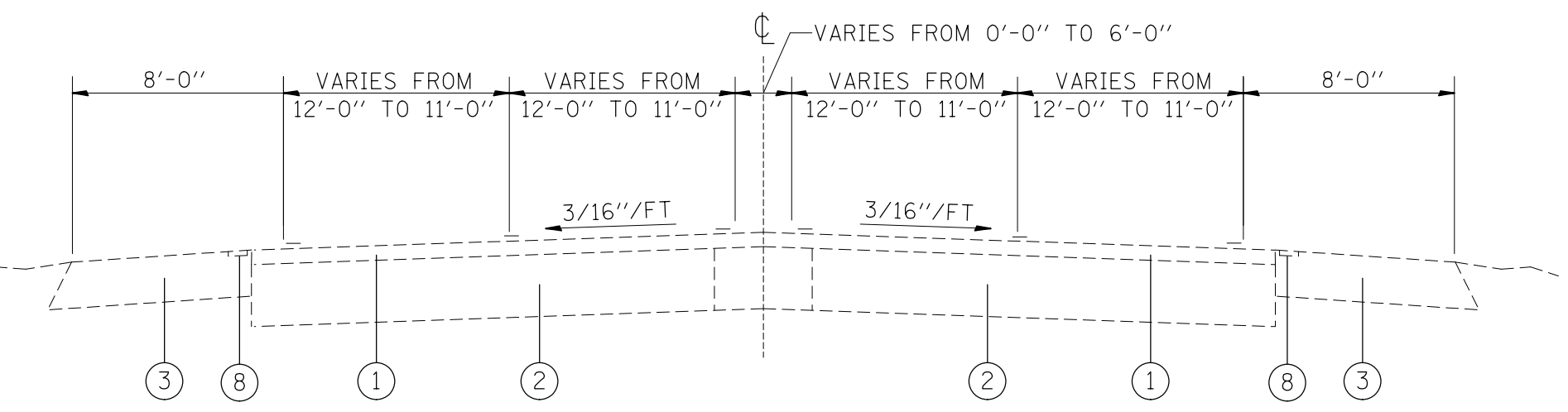
SCALE: SHEET 2 OF 4 SHEETS STA. TO STA.

F.A.P. RTE.	SECTION	COUNTY	TOTAL SHEETS	SHEET NO.
304	(402,403, 404, 405)RS-3	MADISON	16	6
CONTRACT NO. 76L32			ILLINOIS FED. AID PROJECT	

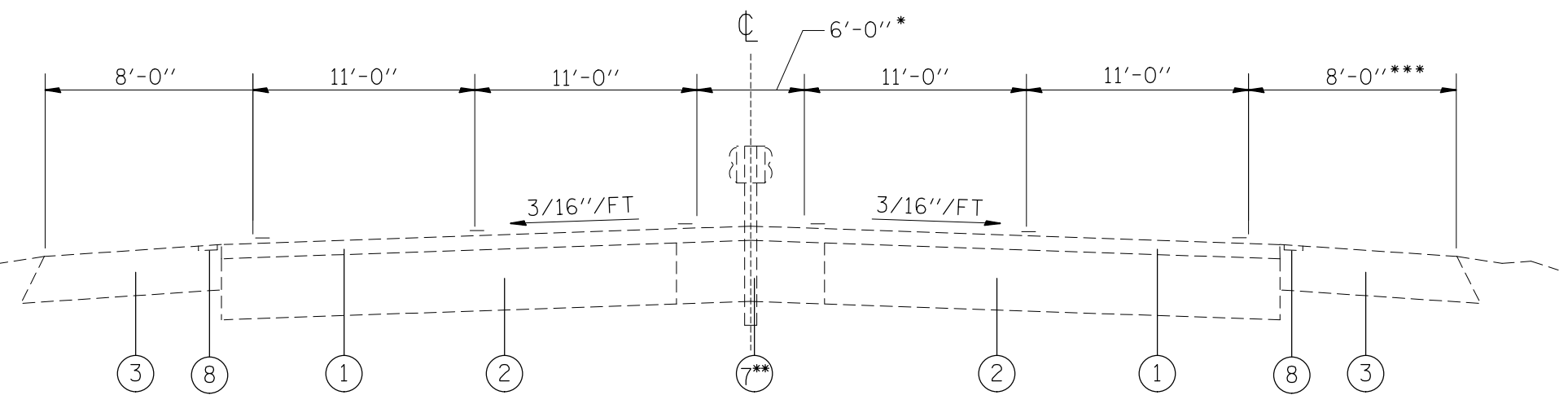
MODEL: Default
 FILE: \\mhc-pw\ulb\B&E\ID\ITEC\Illinois\pwr\pwr\DOT\Documents\1\DOT - Office\1\08761321\CADD\DATA\CAD\Sheet\08761321\08761321.dgn



TYPICAL SECTION
M.S. 1.260 TO M.S. 1.319



TYPICAL SECTION
M.S. 1.319 TO M.S. 1.346



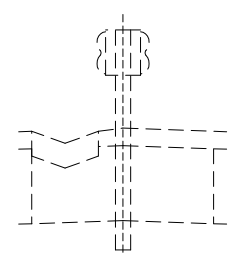
TYPICAL SECTION
M.S. 1.346 TO M.S. 5.439

LEGEND

- ① EXISTING HOT-MIX ASPHALT SURFACE COURSE
- ② EXISTING BITUMINOUS PAVEMENT
- ③ EXISTING HOT-MIX ASPHALT SHOULDER
- ④ EXISTING CONCRETE GUTTER, TYPE B
- ⑤ EXISTING COMBINATION CONCRETE CURB
- ⑥ EXISTING GUARDRAIL
- ⑦ EXISTING STEEL PLATE BEAM GUARDRAIL, TYPE D
- ⑧ EXISTING RUMBLE STRIP, 8"
- ⑨ EXISTING CONCRETE MEDIAN
- ⑩ PROPOSED THERMOPLASTIC PAVEMENT MARKING
- ⑪ PROPOSED BITUMINOUS MATERIALS (TACK COAT)
- ⑫ PROPOSED MICRO-SURFACING, SINGLE PASS, TYPE II, MIXTURE D

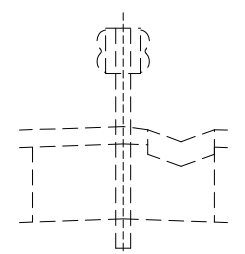
* TYPE B GUTTER LEFT SIDE OF MEDIAN:

- M.S. 1.830 TO M.S. 2.005
- M.S. 2.430 TO M.S. 2.530
- M.S. 2.560 TO M.S. 2.570
- M.S. 3.826 TO M.S. 3.950
- M.S. 3.983 TO M.S. 3.998
- M.S. 4.148 TO M.S. 4.166
- M.S. 4.193 TO M.S. 4.307
- M.S. 5.366 TO M.S. 5.439



* TYPE B GUTTER RIGHT SIDE OF MEDIAN:

- M.S. 2.005 TO M.S. 2.130
- M.S. 2.360 TO M.S. 2.244
- M.S. 3.613 TO M.S. 3.821
- M.S. 3.998 TO M.S. 4.136
- M.S. 4.438 TO M.S. 4.569



** TYPE D GUARDRAIL OMISSIONS:

- M.S. 2.538 TO M.S. 2.558
- M.S. 3.964 TO M.S. 3.983
- M.S. 4.148 TO M.S. 4.193
- M.S. 4.307 TO M.S. 4.438

*** SEE DETAIL ON SHEET 5 OF 13

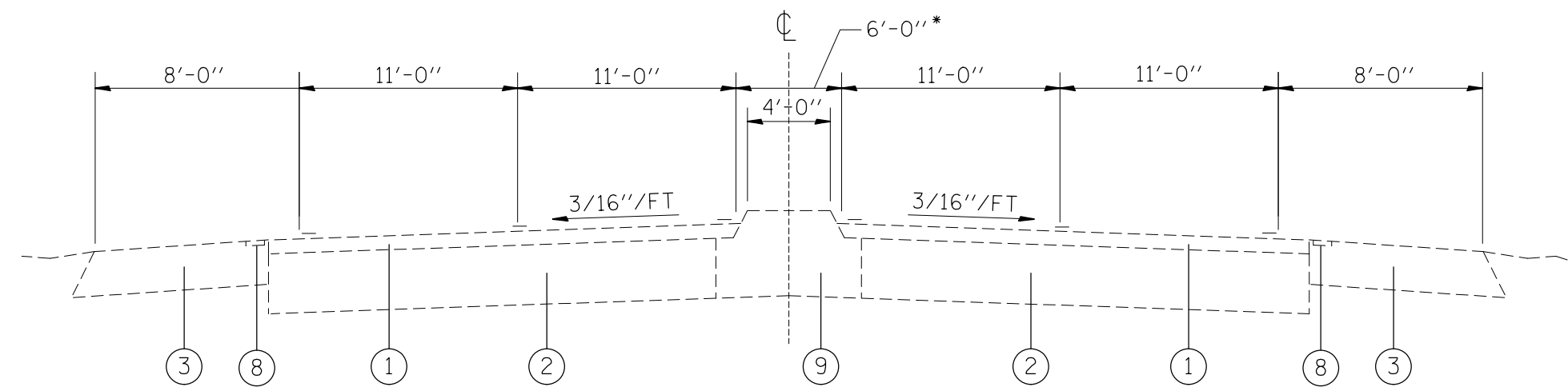
USER NAME = CopperMPE	DESIGNED -	REVISED -
	DRAWN -	REVISED -
PLOT SCALE = 100.0000' / in.	CHECKED -	REVISED -
PLOT DATE = 12/8/2017	DATE -	REVISED -

STATE OF ILLINOIS
DEPARTMENT OF TRANSPORTATION

EXISTING TYPICAL SECTIONS

SCALE: SHEET 3 OF 4 SHEETS STA. TO STA.

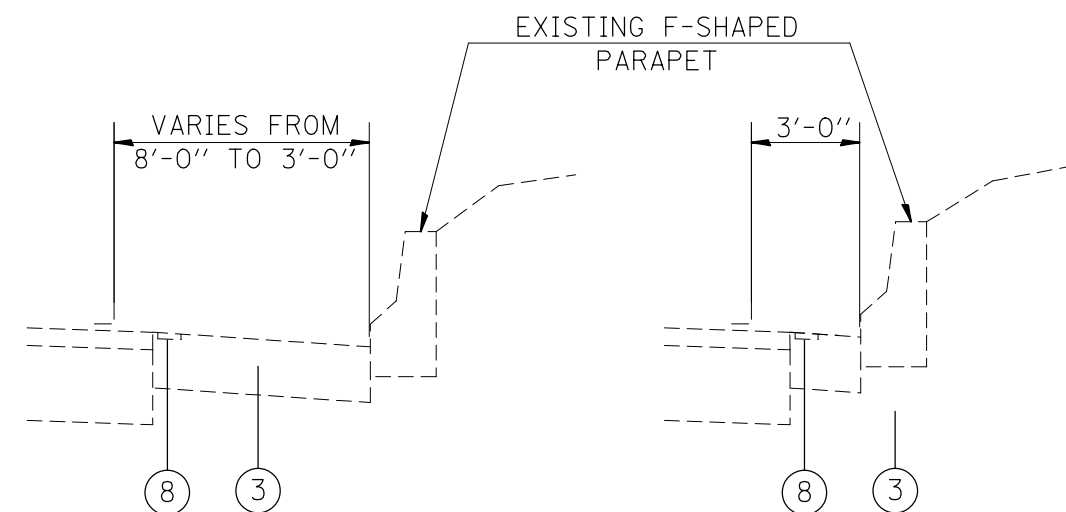
F.A.P. RTE.	SECTION	COUNTY	TOTAL SHEETS	SHEET NO.
304	(402,403, 404, 405)RS-3	MADISON	18	7
CONTRACT NO. 76L32				
ILLINOIS FED. AID PROJECT				



TYPICAL SECTION
M.S. 5.439 TO M.S. 5.560

LEGEND

- ① EXISTING HOT-MIX ASPHALT SURFACE COURSE
- ② EXISTING BITUMINOUS PAVEMENT
- ③ EXISTING HOT-MIX ASPHALT SHOULDER
- ④ EXISTING CONCRETE GUTTER, TYPE B
- ⑤ EXISTING COMBINATION CONCRETE CURB
- ⑥ EXISTING GUARDRAIL
- ⑦ EXISTING STEEL PLATE BEAM GUARDRAIL, TYPE D
- ⑧ EXISTING RUMBLE STRIP, 8"
- ⑨ EXISTING CONCRETE MEDIAN
- ⑩ PROPOSED THERMOPLASTIC PAVEMENT MARKING
- ⑪ PROPOSED BITUMINOUS MATERIALS (TACK COAT)
- ⑫ PROPOSED MICRO-SURFACING, SINGLE PASS, TYPE II, MIXTURE D



FROM M.S. 4.894 TO M.S. 4.911
FROM M.S. 4.972 TO M.S. 4.980

FROM M.S. 4.911 TO M.S. 4.972

MODEL: Default
 FILE: \\mhc-pw\ulb\BEBID\NTEC\Illinois.gov\FWIDOT\Documents\DOT_Offices\Director\B\Projects\08761321\CADD\data\CAD\sheet\08761321\h-jr\plc\plc.dgn

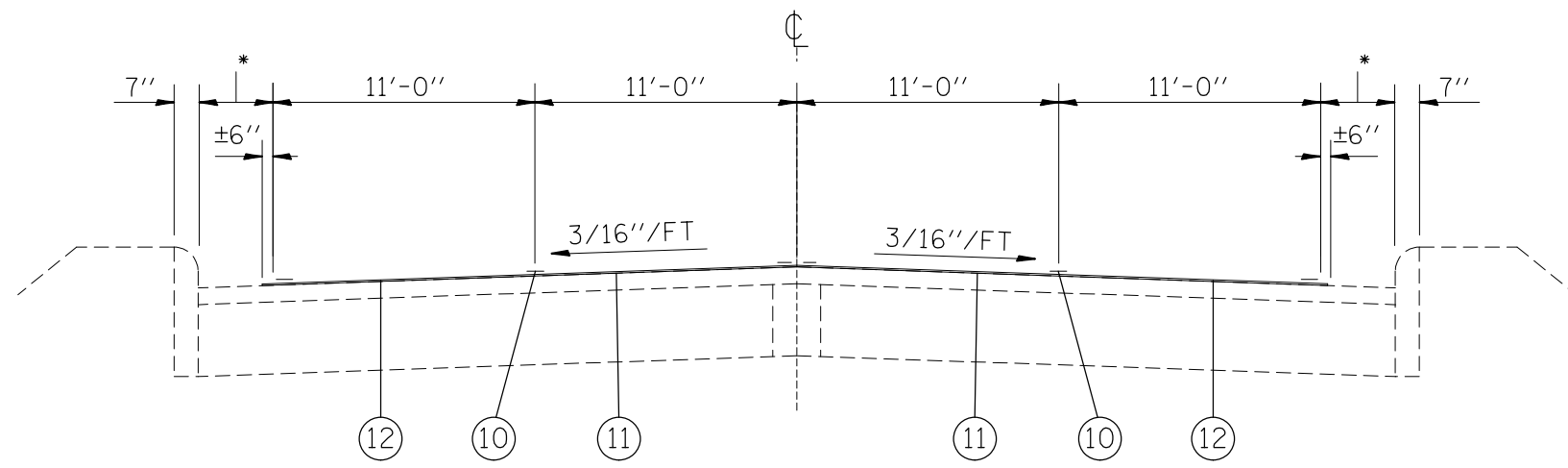
USER NAME = CoppemollePE	DESIGNED -	REVISED -
	DRAWN -	REVISED -
PLOT SCALE = 100.0000' / in.	CHECKED -	REVISED -
PLOT DATE = 12/8/2017	DATE -	REVISED -

STATE OF ILLINOIS
DEPARTMENT OF TRANSPORTATION

EXISTING TYPICAL SECTIONS

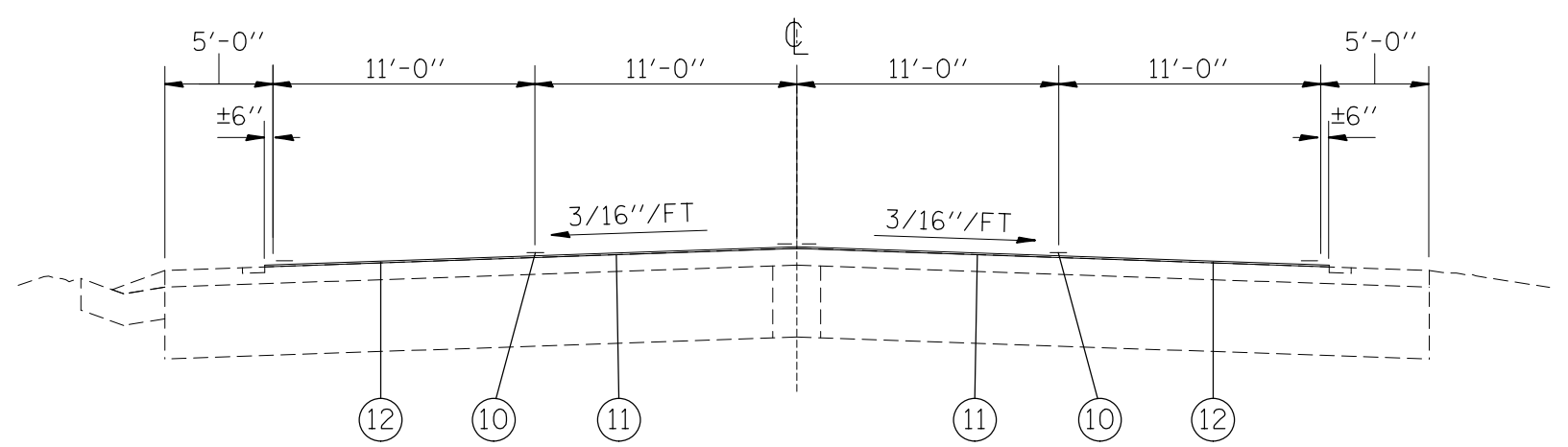
SCALE: SHEET 4 OF 4 SHEETS STA. TO STA.

F.A.P. RTE.	SECTION	COUNTY	TOTAL SHEETS	SHEET NO.
304	(402,403, 404, 405)RS-3	MADISON	16	8
CONTRACT NO. 76L32			ILLINOIS FED. AID PROJECT	

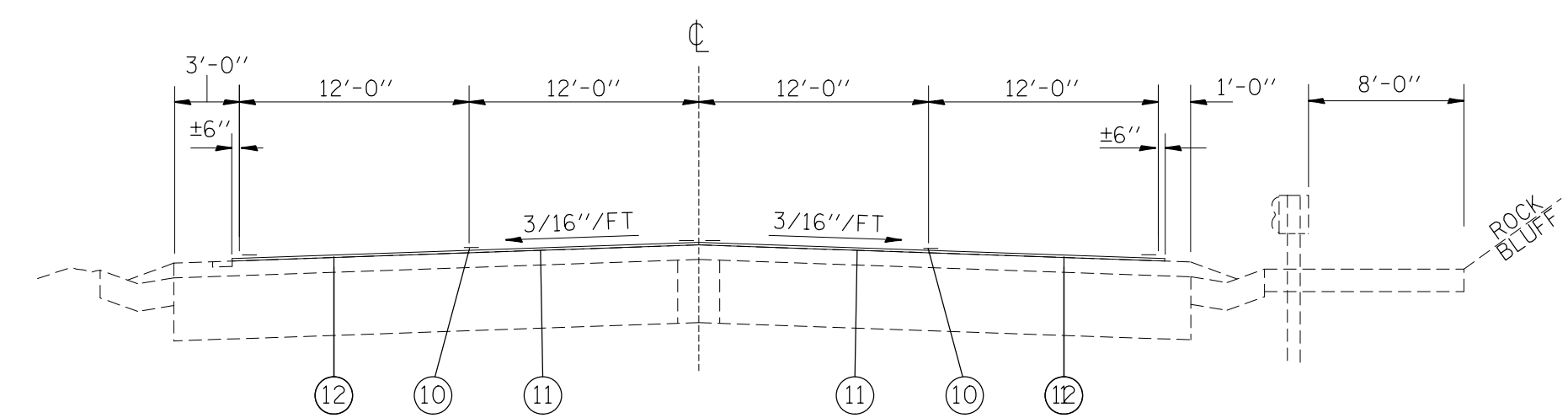


TYPICAL SECTION
M.S. 0.0 TO M.S. 0.529

* VARIES 4'-0" FROM M.S. 0.0 TO M.S. 0.37
TO 5'-0" FROM M.S. 0.37 TO M.S. 0.52



TYPICAL SECTION
M.S. 0.529 TO M.S. 0.685



TYPICAL SECTION
M.S. 0.685 TO M.S. 0.801

LEGEND

- ① EXISTING HOT-MIX ASPHALT SURFACE COURSE
- ② EXISTING BITUMINOUS PAVEMENT
- ③ EXISTING HOT-MIX ASPHALT SHOULDER
- ④ EXISTING CONCRETE GUTTER, TYPE B
- ⑤ EXISTING COMBINATION CONCRETE CURB
- ⑥ EXISTING GUARDRAIL
- ⑦ EXISTING STEEL PLATE BEAM GUARDRAIL, TYPE D
- ⑧ EXISTING RUMBLE STRIP, 8"
- ⑨ EXISTING CONCRETE MEDIAN
- ⑩ PROPOSED THERMOPLASTIC PAVEMENT MARKING
- ⑪ PROPOSED BITUMINOUS MATERIALS (TACK COAT)
- ⑫ PROPOSED MICRO-SURFACING, SINGLE PASS, TYPE II, MIXTURE D

MODEL: Default
 FILE: \\mhc-pw\ulb\B&E\BID\ITEC\Illinois.gov\PW\DOT\Documents\1\DOT - Office\1\1761321\CADD\DATA\CAD\Sheet\08761321\1761321-1761321.dgn

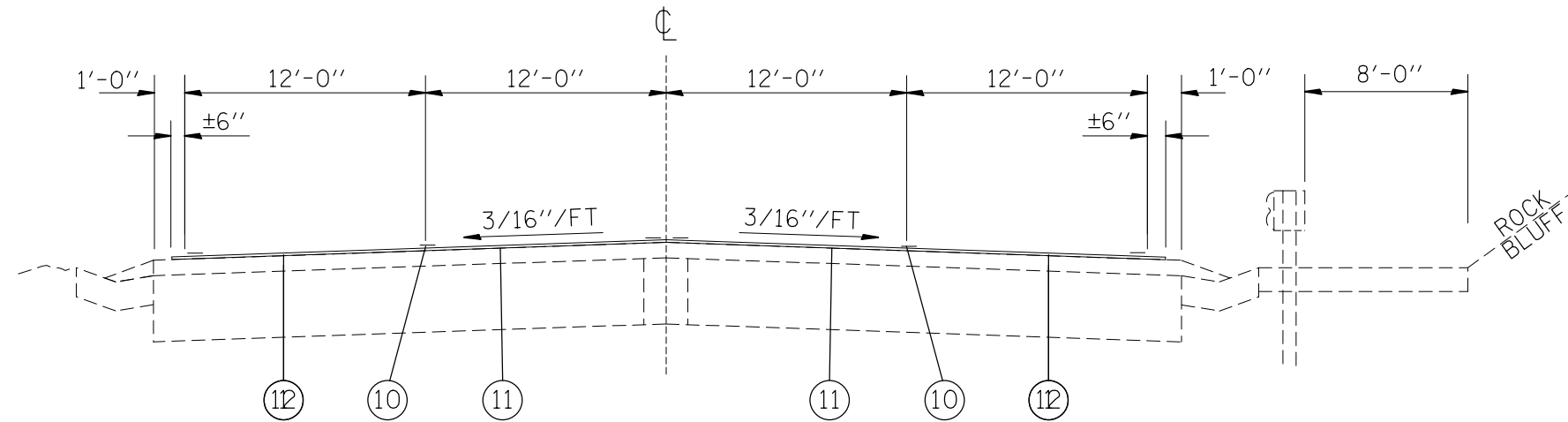
USER NAME = CopperMPE	DESIGNED -	REVISED -
	DRAWN -	REVISED -
PLOT SCALE = 100.0000' / in.	CHECKED -	REVISED -
PLOT DATE = 12/8/2017	DATE -	REVISED -

STATE OF ILLINOIS
DEPARTMENT OF TRANSPORTATION

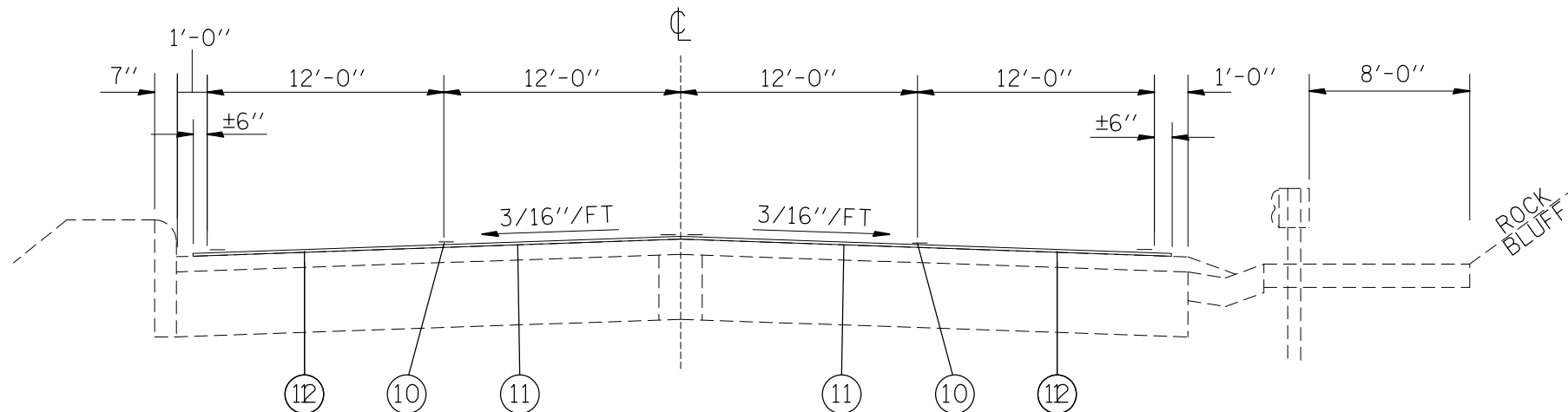
PROPOSED TYPICAL SECTIONS

SCALE: SHEET 1 OF 4 SHEETS STA. TO STA.

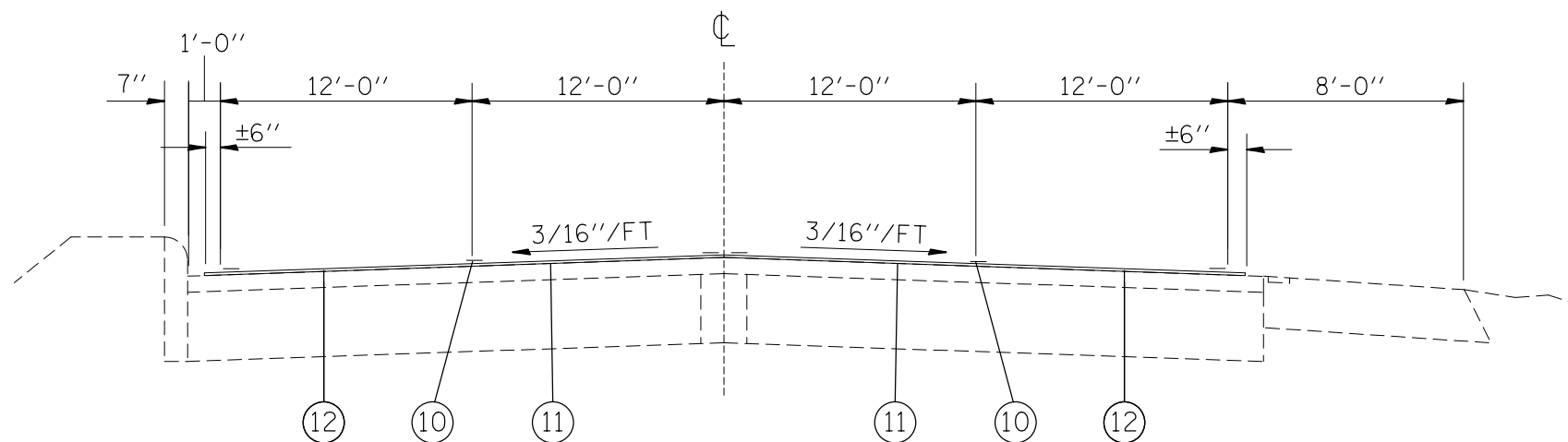
F.A.P. RTE.	SECTION	COUNTY	TOTAL SHEETS	SHEET NO.
304	(402,403, 404, 405)RS-3	MADISON	16	9
CONTRACT NO. 76L32			ILLINOIS FED. AID PROJECT	



TYPICAL SECTION
M.S. 0.801 TO M.S. 0.910



TYPICAL SECTION
M.S. 0.910 TO M.S. 1.062



TYPICAL SECTION
M.S. 1.062 TO M.S. 1.26

LEGEND

- ① EXISTING HOT-MIX ASPHALT SURFACE COURSE
- ② EXISTING BITUMINOUS PAVEMENT
- ③ EXISTING HOT-MIX ASPHALT SHOULDER
- ④ EXISTING CONCRETE GUTTER, TYPE B
- ⑤ EXISTING COMBINATION CONCRETE CURB
- ⑥ EXISTING GUARDRAIL
- ⑦ EXISTING STEEL PLATE BEAM GUARDRAIL, TYPE D
- ⑧ EXISTING RUMBLE STRIP, 8"
- ⑨ EXISTING CONCRETE MEDIAN
- ⑩ PROPOSED THERMOPLASTIC PAVEMENT MARKING
- ⑪ PROPOSED BITUMINOUS MATERIALS (TACK COAT)
- ⑫ PROPOSED MICRO-SURFACING, SINGLE PASS, TYPE II, MIXTURE D

MODEL: Default
 FILE NAME: P:\ILLINOIS\B&E\BID\NTEC\Illinois.gov\FWID\DOT\Documents\1\DOT - Office\1\10761321\CADD\DATA\CAD\Sheet\08761321\10761321.dgn

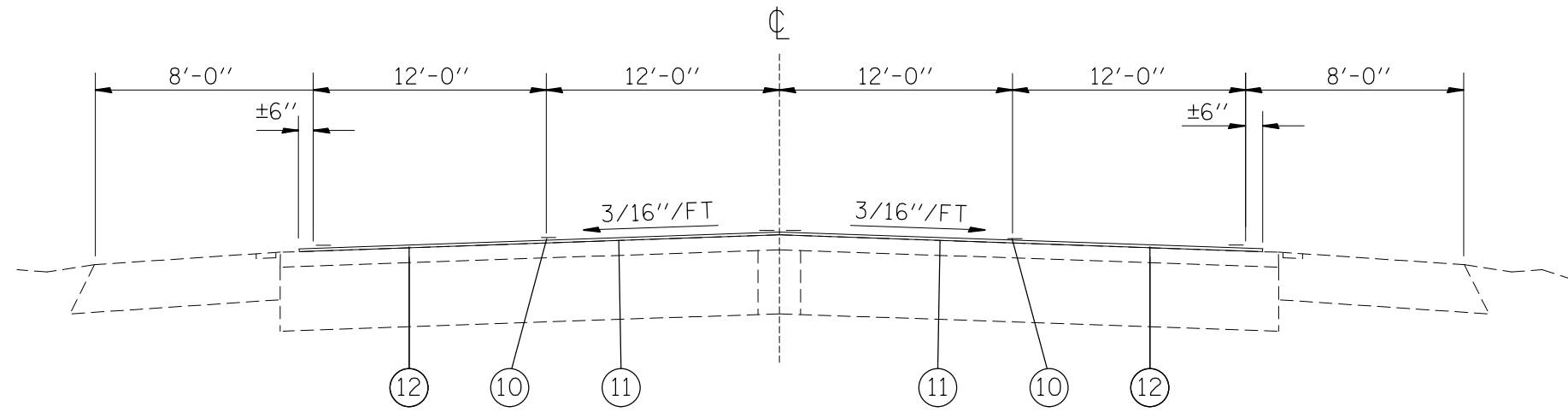
USER NAME = CoppermIPE	DESIGNED -	REVISED -
	DRAWN -	REVISED -
PLOT SCALE = 100.0000' / in.	CHECKED -	REVISED -
PLOT DATE = 12/8/2017	DATE -	REVISED -

STATE OF ILLINOIS
DEPARTMENT OF TRANSPORTATION

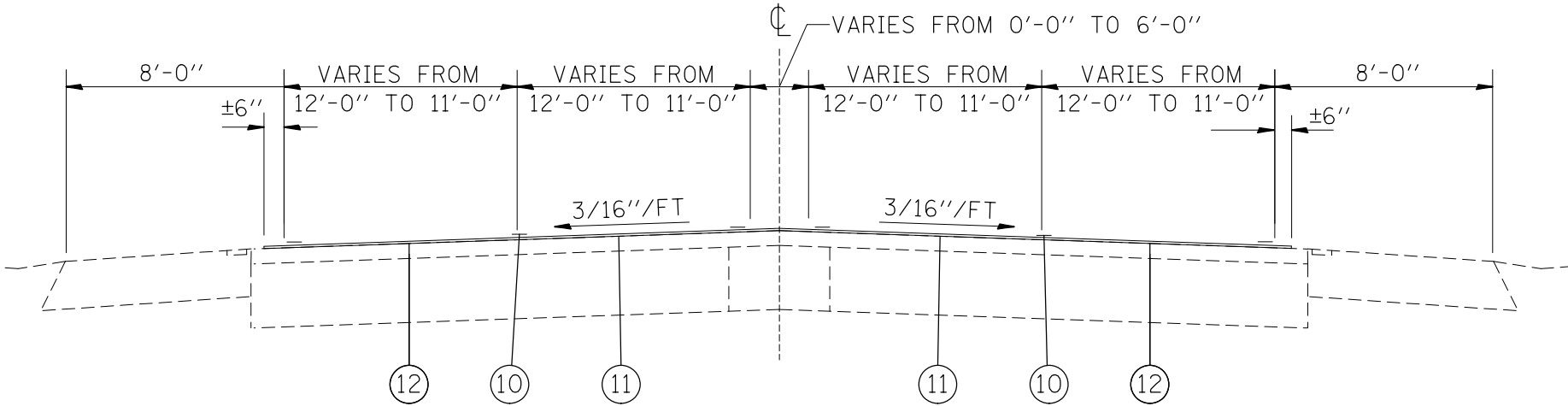
PROPOSED TYPICAL SECTIONS

SCALE: SHEET 2 OF 4 SHEETS STA. TO STA.

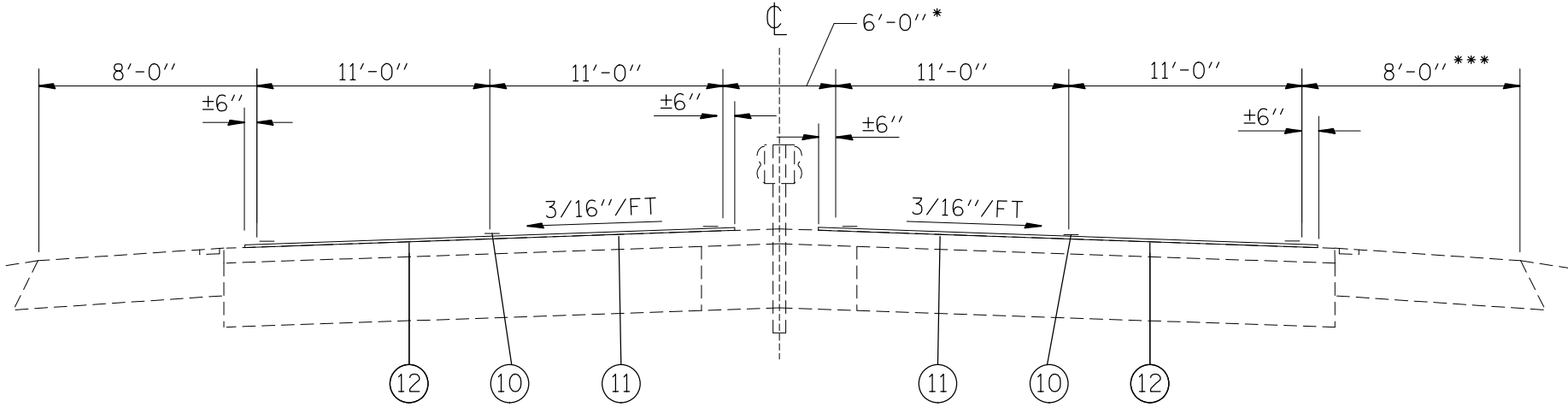
F.A.P. RTE.	SECTION	COUNTY	TOTAL SHEETS	SHEET NO.
304	(402,403, 404, 405)RS-3	MADISON	16	10
CONTRACT NO. 76L32			ILLINOIS FED. AID PROJECT	



TYPICAL SECTION
M.S. 1.260 TO M.S. 1.319



TYPICAL SECTION
M.S. 1.319 TO M.S. 1.346



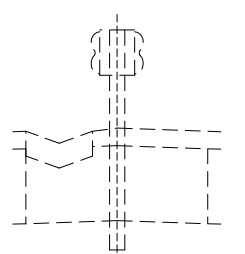
TYPICAL SECTION
M.S. 1.346 TO M.S. 5.439

LEGEND

- ① EXISTING HOT-MIX ASPHALT SURFACE COURSE
- ② EXISTING BITUMINOUS PAVEMENT
- ③ EXISTING HOT-MIX ASPHALT SHOULDER
- ④ EXISTING CONCRETE GUTTER, TYPE B
- ⑤ EXISTING COMBINATION CONCRETE CURB
- ⑥ EXISTING GUARDRAIL
- ⑦ EXISTING STEEL PLATE BEAM GUARDRAIL, TYPE D
- ⑧ EXISTING RUMBLE STRIP, 8"
- ⑨ EXISTING CONCRETE MEDIAN
- ⑩ PROPOSED THERMOPLASTIC PAVEMENT MARKING
- ⑪ PROPOSED BITUMINOUS MATERIALS (TACK COAT)
- ⑫ PROPOSED MICRO-SURFACING, SINGLE PASS, TYPE II, MIXTURE D

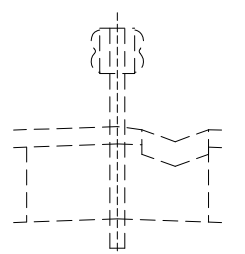
* TYPE B GUTTER LEFT SIDE OF MEDIAN:

- M.S. 1.830 TO M.S. 2.005
- M.S. 2.430 TO M.S. 2.530
- M.S. 2.560 TO M.S. 2.570
- M.S. 3.826 TO M.S. 3.950
- M.S. 3.983 TO M.S. 3.998
- M.S. 4.148 TO M.S. 4.166
- M.S. 4.193 TO M.S. 4.307
- M.S. 5.366 TO M.S. 5.439



* TYPE B GUTTER RIGHT SIDE OF MEDIAN:

- M.S. 2.005 TO M.S. 2.130
- M.S. 2.360 TO M.S. 2.244
- M.S. 3.613 TO M.S. 3.821
- M.S. 3.998 TO M.S. 4.136
- M.S. 4.438 TO M.S. 4.569



** TYPE D GUARDRAIL OMISSIONS:

- M.S. 2.538 TO M.S. 2.558
- M.S. 3.964 TO M.S. 3.983
- M.S. 4.148 TO M.S. 4.193
- M.S. 4.307 TO M.S. 4.438

*** SEE DETAIL ON SHEET 11 OF 13

MODEL: Default
 FILE: \\mhc-pw\ulb\B&E\ID\NTEC\Illinois.gov\FWIDOT\Documents\DOT Office\IDirect\B\Projects\08761321\CADD\Drawings\Sheet\08761321\Sheet-1\p1c1.dgn

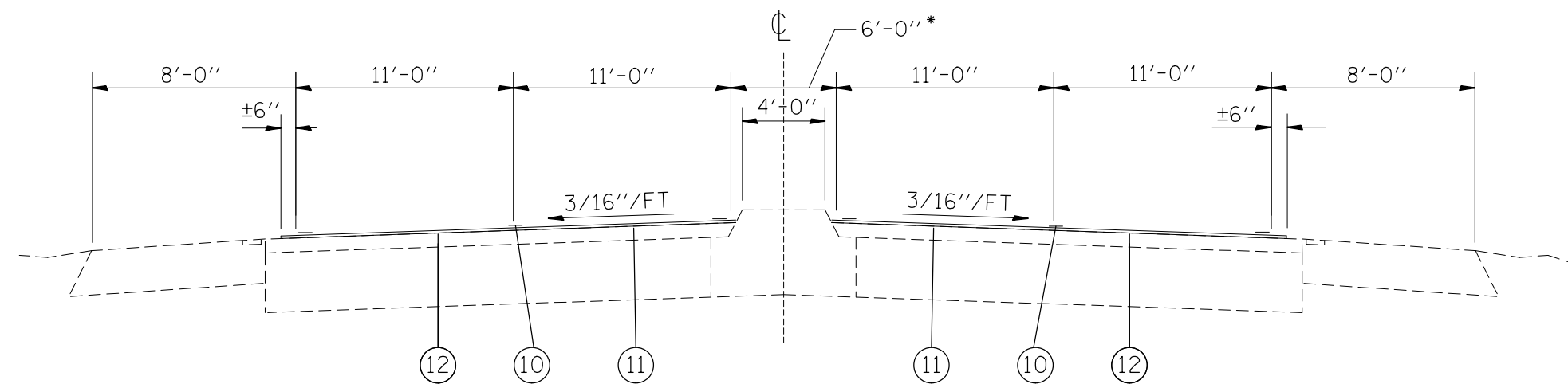
USER NAME = CopperMPE	DESIGNED -	REVISED -
	DRAWN -	REVISED -
PLOT SCALE = 100.0000' / in.	CHECKED -	REVISED -
PLOT DATE = 12/8/2017	DATE -	REVISED -

STATE OF ILLINOIS
DEPARTMENT OF TRANSPORTATION

PROPOSED TYPICAL SECTIONS

SCALE: SHEET 3 OF 4 SHEETS STA. TO STA.

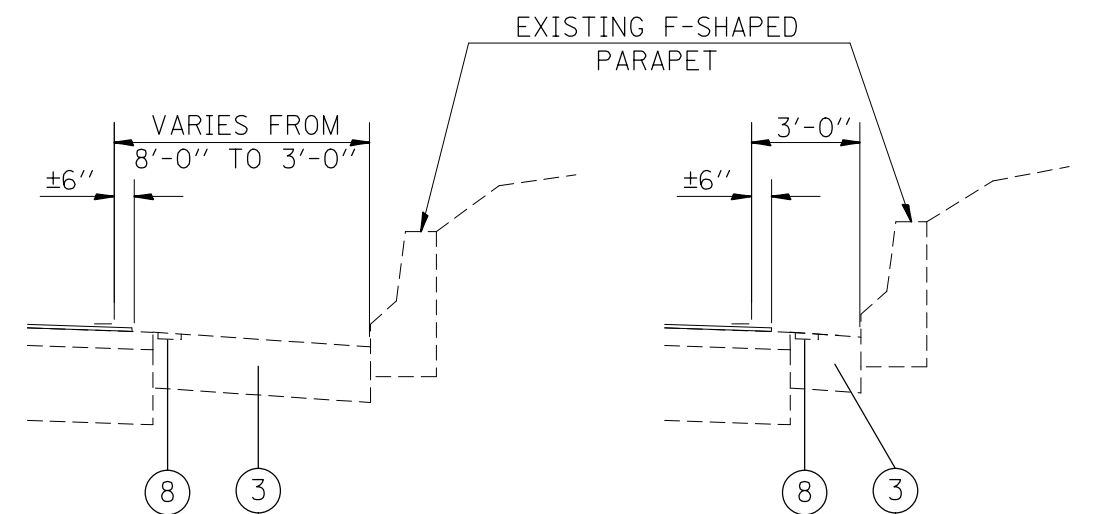
F.A.P. RTE.	SECTION	COUNTY	TOTAL SHEETS	SHEET NO.
304	(402,403, 404, 405)RS-3	MADISON	16	11
CONTRACT NO. 76L32			ILLINOIS FED. AID PROJECT	



TYPICAL SECTION
M.S. 5.439 TO M.S. 5.560

LEGEND

- ① EXISTING HOT-MIX ASPHALT SURFACE COURSE
- ② EXISTING BITUMINOUS PAVEMENT
- ③ EXISTING HOT-MIX ASPHALT SHOULDER
- ④ EXISTING CONCRETE GUTTER, TYPE B
- ⑤ EXISTING COMBINATION CONCRETE CURB
- ⑥ EXISTING GUARDRAIL
- ⑦ EXISTING STEEL PLATE BEAM GUARDRAIL, TYPE D
- ⑧ EXISTING RUMBLE STRIP, 8"
- ⑨ EXISTING CONCRETE MEDIAN
- ⑩ PROPOSED THERMOPLASTIC PAVEMENT MARKING
- ⑪ PROPOSED BITUMINOUS MATERIALS (TACK COAT)
- ⑫ PROPOSED MICRO-SURFACING, SINGLE PASS, TYPE II, MIXTURE D



FROM M.S. 4.894 TO M.S. 4.911
FROM M.S. 4.972 TO M.S. 4.980

FROM M.S. 4.911 TO M.S. 4.972

MODEL: Default
FILE: \\mhc-pw\ulb\BEBID\NTEC\Illinois\gov\PIWDOT\Documents\DOT Office\Director\B\Projects\08761321\CAD\data\CAD\sheet\08761321\sheet-1.dwg

USER NAME = CoppemollePE	DESIGNED -	REVISED -
	DRAWN -	REVISED -
PLOT SCALE = 100.0000 ' / in.	CHECKED -	REVISED -
PLOT DATE = 12/8/2017	DATE -	REVISED -

STATE OF ILLINOIS
DEPARTMENT OF TRANSPORTATION

PROPOSED TYPICAL SECTIONS

SCALE: SHEET 4 OF 4 SHEETS STA. TO STA.

F.A.P. RTE.	SECTION	COUNTY	TOTAL SHEETS	SHEET NO.
304	(402,403, 404, 405)RS-3	MADISON	16	12
CONTRACT NO. 76L32			ILLINOIS FED. AID PROJECT	

PAVEMENT MARKING SCHEDULE																
LOCATION			THERMOPLASTIC PAVEMENT MARKING					PAVEMENT MARKING REMOVAL - WATER BLASTING*	RAISED REFLECTIVE PAVEMENT MARKER PROTECTION**	SHORT TERM PAVEMENT MARKING			SHORT TERM PAVEMENT MARKING REMOVAL			
			LINE - 4"			LINE - 12"				LINE - 24" SOLID WHITE	LETTERS AND SYMBOLS	LINE - 4"				
			SOLID WHITE EDGELINE	SOLID YELLOW CENTERLINE	WHITE SKIP DASH	SOLID YELLOW	SOLID WHITE					SKIP DASH YELLOW		SKIP DASH WHITE	WHITE DIAGONALS	
MILE STA	TO	MILE STA	FOOT	FOOT	FOOT	FOOT	FOOT	EACH	SQ FT	SQ FT	EACH	FOOT	FOOT	FOOT	SQ FT	
0.000	TO	0.654	6906	6906	1727			144	244.8					66		
0.654	TO	0.656	SIDEWALK OMISSION								348					
0.656	TO	1.319		7002								1294		42		
1.319	TO	1.348	34787	615		26					12					
1.348	TO	3.950		27478												
3.950	TO	3.960	53	9.5												
3.960	TO	3.969														
3.969	TO	4.154	2227	1966.5												
4.154	TO	4.171		9.5												
4.171	TO	4.179	43													
4.179	TO	4.183														
4.183	TO	4.297		1211.5												
4.297	TO	4.300		69.5		9										
4.300	TO	4.313	1932	142												
4.313	TO	4.362		1032.5												
4.362	TO	4.365														
4.365	TO	4.369	45	178	10											
4.369	TO	4.370														
4.370	TO	4.381	120													
4.381	TO	4.386		71												
4.386	TO	4.393	122													
4.393	TO	4.401	85	207												
4.401	TO	4.405	62													
4.405	TO	4.431		556												
4.431	TO	5.474	11292	11014		40										
5.474	TO	5.483		9.5												
5.483	TO	5.485	58													
5.485	TO	5.560	790	825.5										19		
														245		
SUBTOTAL			58593	59232	14622	250	100					1502	5322	1908		
TOTAL			132447			350	204	276	45183	952		8732			2911	

* ASSUMES EXISTING PAVEMENT MARKING INSTALLED IN APPROXIMATE LOCATION AS PROPOSED PAVEMENT MARKING, EQUAL TO TEMPORARY PAVEMENT MARKING REMOVAL
 ** ASSUMES EXISTING RAISED REFLECTIVE PAVEMENT MARKERS WERE INSTALLED IN ACCORDANCE WITH HIGHWAY STANDARD 781001-04

MAINLINE MICRO SURFACING SCHEDULE					
LOCATIONS			TOTAL WIDTH ****	BITUMINOUS MATERIALS (TACK COAT)	MICRO-SURFACING, SINGLE PASS, TYPE II, MIXTURE D
MILE STA	TO	MILE STA	FOOT	POUND	SQ YD
UNDIVIDED BOUNDS					
0.000	TO	0.214	45	1271.2	5649.6
0.214	TO	0.225	RAIL ROAD OMISSION		
0.225	TO	0.529	45	1805.8	8025.6
0.529	TO	0.685	45	926.6	4118.4
0.685	TO	0.801	49	750.3	3334.6
0.801	TO	0.910	49	705	3133.4
0.910	TO	1.062	49	983.1	4369.5
1.062	TO	1.260	49	1280.7	5691.8
1.260	TO	1.319	49	381.6	1696.1
1.319	TO	1.346	50	178.2	792
DIVIDED BOUNDS					
1.346	TO	5.439	46	24852.7	110456.4
5.439	TO	5.560	46	734.7	3265.4
TOTAL				33869.9	150532.8

**** ASSUMES LANE WIDTH AND 6" OVERLAP OF SHOULDER JOINT. OMIT EXPOSED CONCRETE GUTTERS, CURBS, AND PAVEMENT, AND EXISTING RUMBLE STRIPS.

FIBER-MODIFIED ASPHALT CRACK SEALING	
LOCATION	FEET
TRANSVERSE	7339.2
LONGITUDINAL	5871
TOTAL	13210.2

BUMP REMOVAL ***		
LOCATION		EACH
MILE STA	TO	MILE STA
0.00	TO	5.56
TOTAL		12

*** 1 BUMP REMOVAL = GRINDING FULL WIDTH ACROSS ONE LANE

MODEL: Default
FILE: Mainline_PlanULB&EIDNITEC Illinois.gov:PWIDOT:Documents\DOT Office\DLI\rlct 8\Projects\08761321\CadData\Cad\Sheet\08761321-rlct-schedule.dgn

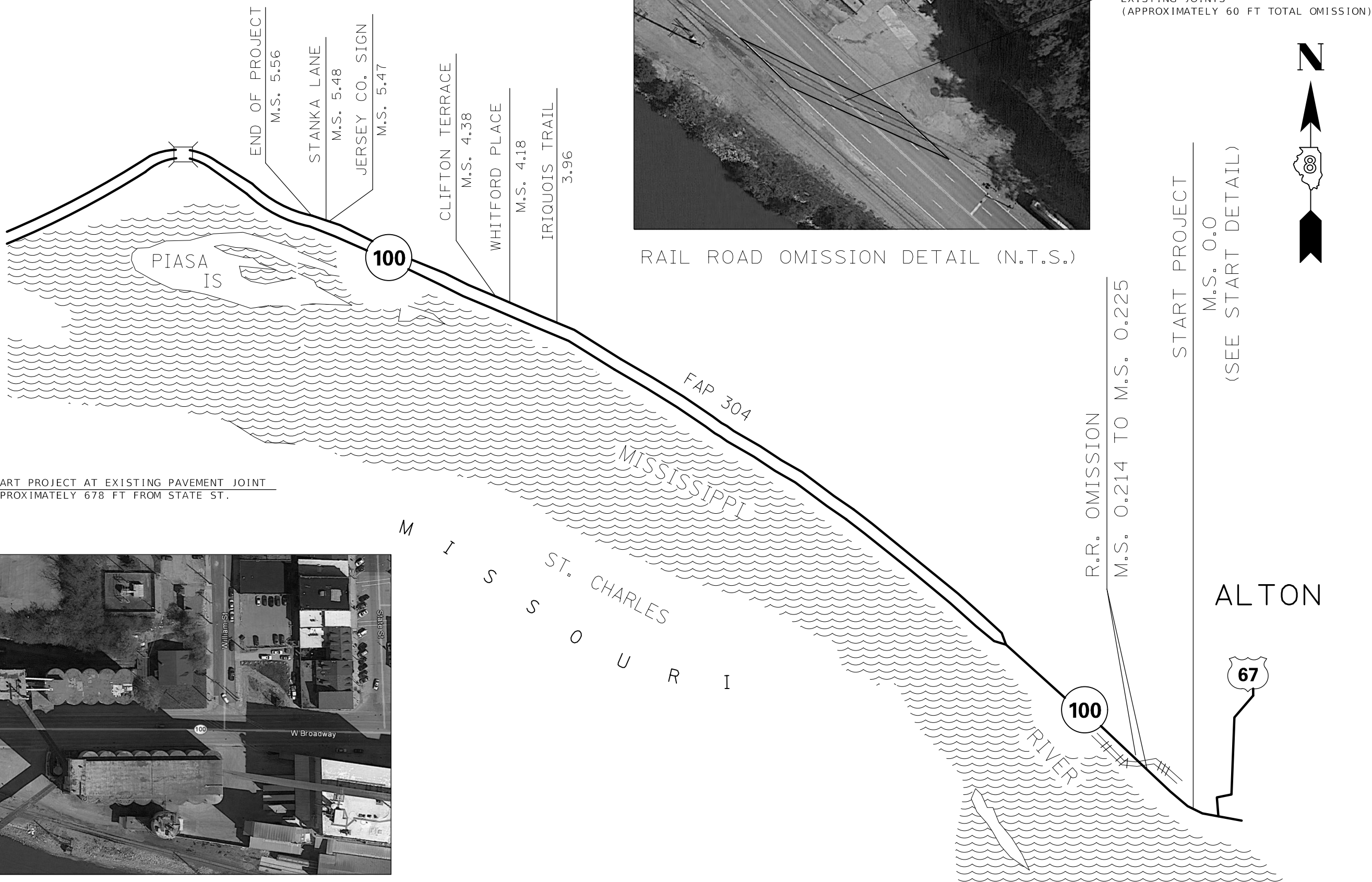
USER NAME = CopperMPE	DESIGNED -	REVISED -
	DRAWN -	REVISED -
PLOT SCALE = 100,0000' / in.	CHECKED -	REVISED -
PLOT DATE = 12/8/2017	DATE -	REVISED -

**STATE OF ILLINOIS
DEPARTMENT OF TRANSPORTATION**

SCHEDULE OF QUANTITIES

SCALE: SHEET 1 OF 1 SHEETS STA. TO STA.

F.A.P. RTE.	SECTION	COUNTY	TOTAL SHEETS	SHEET NO.
304	(402,403,404,405)RS-3	MADISON	16	13
CONTRACT NO. 76L32				
ILLINOIS FED. AID PROJECT				



RAIL ROAD OMISSION DETAIL (N.T.S.)

OMIT RAIL ROAD FROM MICROSURFACING AT EXISTING JOINTS (APPROXIMATELY 60 FT TOTAL OMISSION)



START PROJECT AT EXISTING PAVEMENT JOINT APPROXIMATELY 678 FT FROM STATE ST.



START DETAIL (N.T.S.)

NOT TO SCALE

MODEL: Default
 FILE: \\mhc\p\ul\B&E\ID\ITEC\Illinois\gov\PI\W\DOT\Documents\1\DOT - Offices\District 8\Projects\08761321\CADD\data\CAD\heeres\08761321-8-eban.dgn

USER NAME = CopperMPE	DESIGNED -	REVISED -
	DRAWN -	REVISED -
PLOT SCALE = 100,0000' / in.	CHECKED -	REVISED -
PLOT DATE = 12/8/2017	DATE -	REVISED -

**STATE OF ILLINOIS
DEPARTMENT OF TRANSPORTATION**

LOCATION MAP

SCALE: SHEET 1 OF 1 SHEETS STA. TO STA.

F.A.P. RTE.	SECTION	COUNTY	TOTAL SHEETS	SHEET NO.
304	(402,403,404,405)RS-3	MADISON	16	14
CONTRACT NO. 76L32				
ILLINOIS FED. AID PROJECT				

