

STATE OF ILLINOIS  
DEPARTMENT OF TRANSPORTATION

F.A.P. RTE.	SECTION	COUNTY	TOTAL SHEETS	SHEET NO.
600	(129, 130-1)RS-3	ST. CLAIR	11	1
		ILLINOIS	CONTRACT NO. 76L33	

**INDEX OF SHEETS**

- 1 COVER SHEET
- 2 GENERAL NOTE, HIGHWAY STANDARDS, MIXTURE REQUIREMENTS & COMMITMENTS
- 3 SUMMARY OF QUANTITIES
- 4-5 TYPICAL SECTIONS
- 6 SCHEDULE OF QUANTITIES
- 7-8 ALIGNMENTS, TIES, AND BENCHMARKS
- 9 LOCATION MAP
- 10 RESURFACING DETAILS
- 11 TRAFFIC COUNTER DETAILS

**TRAFFIC DATA**

FUNCTIONAL CLASSIFICATION: URBAN OTHER ARTERIAL

FOUNTAIN PKWY. TO MILBURN SCHOOL RD.

2017 ADT (ACTUAL): 17,800  
2018 ADT (ESTIMATED): 18,000  
SU: 4.5%  
MU: 1.8%

MILBURN SCHOOL RD. TO S. MORRISON AVE.

2017 ADT (ACTUAL): 15,500  
2018 ADT (ESTIMATED): 15,700  
SU: 4.5%  
MU: 1.8%

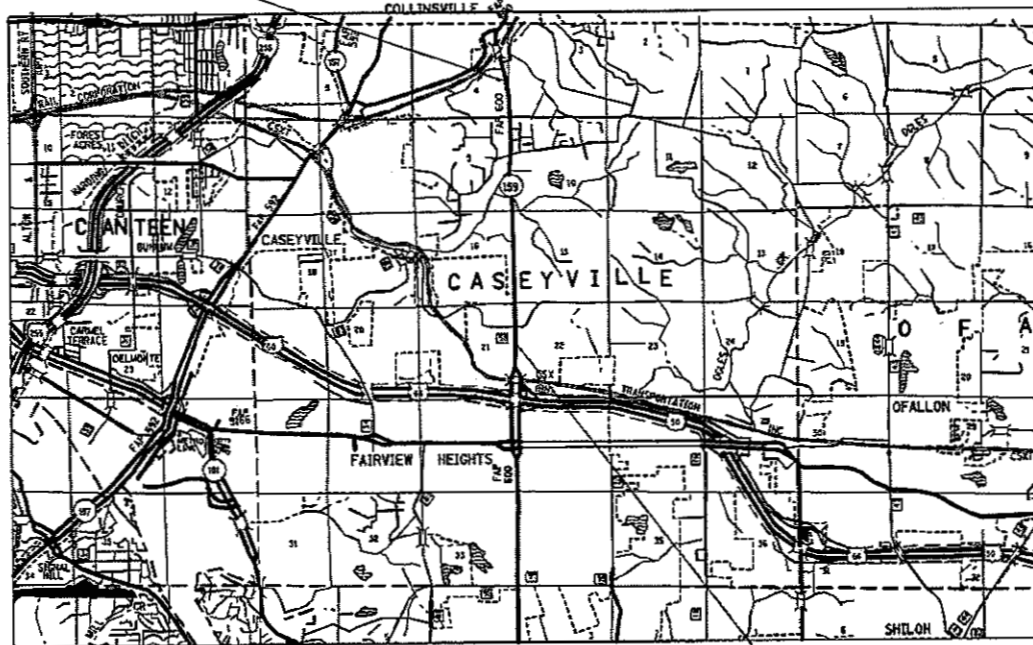
**PROPOSED  
HIGHWAY PLANS**

FAP ROUTE 600 (IL 159)  
SECTION (129, 130-1)RS-3  
MICROSURFACING IL 159 FROM 0.2 MI S OF  
BROOKHAVEN TO 0.1 MI N OF FOUNTAIN PKWY  
ST. CLAIR COUNTY

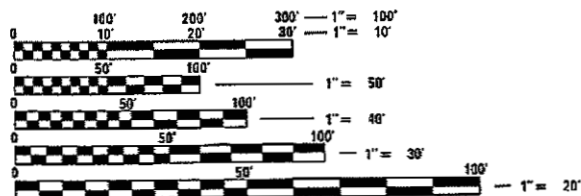
C-98-181-18



END IMPROVEMENT  
STA. 534+80  
LAT. 38.649312°N  
LONG. 89.986211°W



BEGIN IMPROVEMENT  
STA. 376+58  
LAT. 38.607414°N  
LONG. 89.985075°W



FULL SIZE PLANS HAVE BEEN PREPARED USING STANDARD ENGINEERING SCALES. REDUCED SIZED PLANS WILL NOT CONFORM TO STANDARD SCALES. IN MAKING MEASUREMENTS ON REDUCED PLANS, THE ABOVE SCALES MAY BE USED.

J.U.L.I.E.  
JOINT UTILITY LOCATION INFORMATION FOR EXCAVATION  
1-800-892-0123  
OR 811

PROJECT ENGINEER: TIM PADGETT (618)346-3325  
PROJECT MANAGER: DREW RUHOLL (618)346-3454

GROSS LENGTH = 15,822 FT. = 2.997 MILE  
NET LENGTH = 15,822 FT. = 2.997 MILE

CONTRACT NO. 76L33

STATE OF ILLINOIS  
DEPARTMENT OF TRANSPORTATION

SUBMITTED Dec 8 2017  
Jeffrey L. Kanigs  
REGIONAL ENGINEER

Feb 2 2018  
Paul P. [Signature]  
ENGINEER OF DESIGN AND ENVIRONMENT

Feb 2 2018  
Paul P. [Signature]  
DIRECTOR OF PROGRAM DEVELOPMENT

PRINTED BY THE AUTHORITY  
OF THE STATE OF ILLINOIS

**GENERAL NOTES:**

- ① ILLINOIS STATE LAW REQUIRES A 48-HOUR NOTICE TO BE GIVEN TO ALL UTILITIES WITHIN THE PROJECT AREA BEFORE DIGGING. FIELD MARKING OF FACILITIES MAY BE OBTAINED BY CONTACTING J.U.L.I.E. OR FOR NON-MEMBERS, THE UTILITY COMPANY DIRECTLY. AGENCIES KNOWN TO HAVE FACILITIES WITHIN THE PROJECT AREA ARE AS FOLLOWS:

	AERIAL	BURIED
*AMEREN ILLINOIS (GAS & ELECTRIC)	x	x
*AT&T ILLINOIS (COMMUNICATIONS)	x	x
*BUCKEYE PARTNERS L.P.-- WOOD RIVER PIPELINE (PIPELINE)		x
*CASEVILLE TOWNSHIP ADVANCED WASTEWATER TREATMENT SYSTEM (SANITARY SEWER)		x
*CENTURYLINK COMMUNICATIONS, LLC. (COMMUNICATIONS)	x	x
*CHARTER COMMUNICATIONS, INC. (CABLE TV)	x	x
*CITY OF COLLINSVILLE (WATER & SANITARY SEWER)		x
1*CITY OF FAIRVIEW HEIGHTS (SANITARY SEWER)		x
*MEDIACOM (CABLE TV)	x	x
*CITY OF O'FALLON (WATER & SANITARY SEWER)		x

MEMBERS OF J.U.L.I.E. CALL TOLL FREE (800) 892-0123 OR 811 AND ARE INDICATED BY \*. NON-J.U.L.I.E. MEMBERS MUST BE NOTIFIED INDIVIDUALLY.

- ② THE CONTRACTOR AND THE ENGINEER SHALL BE AWARE THAT NO SURVEY WAS PERFORMED FOR THIS PROJECT. THE STATIONING, TOPOGRAPHY, AND QUANTITIES SHOWN IN THE PLANS WERE CREATED USING MICROFILM AND FIELD MEASUREMENTS. ALL SHALL BE ASSUMED TO BE APPROXIMATE. THE CONTRACTOR SHALL VERIFY DIMENSIONS AND CONDITIONS IN THE FIELD PRIOR TO CONSTRUCTION AND ORDERING OF MATERIALS.
- ③ THE ILLINOIS DEPARTMENT OF TRANSPORTATION STRONGLY ENCOURAGES THE PRIME CONTRACTOR AND THEIR APPROVED SUB-CONTRACTORS TO HIRE MINORITY, WOMEN AND DISADVANTAGED INDIVIDUALS FROM ITS FEDERALLY FUNDED HIGHWAY CONSTRUCTION CAREERS TRAINING PROGRAM (HCCTP) TO HELP MEET WORKFORCE AND TRAINEE GOALS. THIS PROGRAM IS TRAINING MINORITIES, WOMEN AND DISADVANTAGED INDIVIDUALS IN HIGHWAY CONSTRUCTION-RELATED SKILLS, E.G., MATH FOR THE TRADES, JOB READINESS, TECHNICAL SKILLS COURSEWORK (CARPENTRY, CONCRETE FLATWORK, BLUEPRINT READING, SITE PLANS, SITE WORK, TOOLS USE, ETC.) AND OSHA 10 HOUR CERTIFICATION, TO PREPARE THEM FOR A CAREER IN THE HIGHWAY CONSTRUCTION TRADES. GRADUATES ARE WELL-TRAINED AND READY TO BECOME PRODUCTIVE ENTRY-LEVEL CONSTRUCTION WORKERS. PLEASE CONTACT THE DISTRICT 8 EEO OFFICE AT 618-346-3360 AND/OR THE HCCTP COORDINATOR AT 618-874-6528 TO LEARN MORE ABOUT THE PROGRAM AND FOR ASSISTANCE IN MEETING WORKFORCE AND TRAINEE GOALS.
- ④ THE THICKNESS OF HOT-MIX-ASPHALT SURFACE MIXTURES SHOWN ON THE PLANS IS THE NOMINAL THICKNESS. DEVIATIONS MAY OCCUR DUE TO IRREGULARITIES IN THE EXISTING SURFACE OR BASE ON WHICH THE BITUMINOUS MIXTURE IS PLACED.
- ⑤ AN ESTIMATED QUANTITY OF 50,000 FEET OF FIBER-MODIFIED ASPHALT CRACK SEALING HAS BEEN ADDED TO THE PLANS. EXACT LOCATIONS WILL BE DETERMINED BY THE ENGINEER.
- ⑥ NO OVERNIGHT LANE CLOSURES WILL BE PERMITTED.
- ⑦ THE PROPOSED PAVEMENT MARKINGS AND TEMPORARY PAVEMENT MARKINGS SHALL MATCH THE LOCATIONS OF THE EXISTING PAVEMENT MARKINGS, AS DIRECTED BY THE ENGINEER.
- ⑧ THE CONTRACTOR SHALL PROTECT ALL SURVEY MONUMENTS TO ENSURE THEY ARE VISIBLE UPON COMPLETION OF THE MICROSURFACING. THE PROCESS ESTABLISHED BY THE CONTRACTOR SHALL BE APPROVED BY THE RESIDENT ENGINEER PRIOR TO CONSTRUCTION AND THE COST FOR THIS WORK SHALL BE INCLUDED IN THE COST OF THE MICROSURFACING.
- ⑨ ALL SHORT TERM PAVEMENT MARKING AND TEMPORARY PAVEMENT MARKING SHALL BE REMOVABLE TAPE.
- ⑩ TWO CHANGEABLE MESSAGE SIGNS SHALL BE PROVIDED ALONG IL ROUTE 159 TO ALERT DRIVERS OF THE ROAD CONSTRUCTION. CHANGEABLE MESSAGE SIGNS SHALL BE PLACED 14 DAYS PRIOR TO BEGINNING ANY WORK. EXACT LOCATIONS OF THE CHANGEABLE MESSAGE SIGNS SHALL BE DETERMINED BY THE ENGINEER.

**HIGHWAY STANDARDS**

000001-06	STANDARD SYMBOLS, ABBREVIATIONS AND PATTERNS
001006	DECIMAL OF AN INCH AND OF A FOOT
701101-05	OFF-RD OPERATIONS, MULTILANE, 15' (4.5m) TO 24" (600mm) FROM PAVEMENT EDGE
701106-02	OFF-RD OPERATIONS, MULTILANE, MORE THAN 15' (4.5m) AWAY
701426-09	LANE CLOSURE, MULTILANE, INTERMITTENT OR MOVING OPER., FOR SPEEDS ≥ 45 MPH
701602-09	URBAN LANE CLOSURE, MULTILANE, 2W WITH BIDIRECTIONAL LEFT TURN LANE
701701-10	URBAN LANE CLOSURE, MULTILANE INTERSECTION
701901-07	TRAFFIC CONTROL DEVICES
780001-05	TYPICAL PAVEMENT MARKINGS
781001-04	TYPICAL APPLICATIONS RAISED REFLECTIVE PAVEMENT MARKERS

**MIXTURE REQUIREMENTS**

ROUTE	FAP 600 (IL 159)
SECTION	(129, 130-1)RS-3
COUNTY	St. Clair
CONTRACT	76L33

DESCRIPTION	Micro-Surfacing - Single Pass - Along IL 159 from 0.2 mi S of Brookhaven to 0.1 mi N of Fountain Pkwy
-------------	---

ADT (CONSTRUCTION YR.):	15500
MU%	1.8
SU%	4.5
20 YR. ESAL'S	2.04

MIXTURE USE	Friction	Agg Type
AC/PG		
RAP % (MAX)		
DESIGN AIR VOIDS		
MIX COMPOSITION (Gradation)		
FRICITION AGG	MIXTURE "D"	
QUALITY MGMT PROGRAM		

Plan quantities for Bituminous Concrete Surface Course items are calculated using a unit weight of 112 lb/sq yd/in (59.8 kg/sq m/25mm)

**COMMITMENTS**

NONE

MODEL: Default  
FILE NAME: P:\11\08\AEBID\NTEC\Illinois.gov\PIWDOT\Documents\DOT Offices\District 8\Projects\08761331\CAD\data\CAD\sheet\08761331-18-hg-gencore.dgn

USER NAME = ruhollid	DESIGNED -	REVISED -
	DRAWN -	REVISED -
PLOT SCALE = 100.0000' / in.	CHECKED -	REVISED -
PLOT DATE = 12/6/2017	DATE -	REVISED -

**STATE OF ILLINOIS  
DEPARTMENT OF TRANSPORTATION**

**GENERAL NOTES, HIGHWAY STANDARDS,  
MIXTURE REQUIREMENTS & COMMITMENTS**

SCALE: SHEET OF SHEETS STA. TO STA.

F.A.P. RTE.	SECTION	COUNTY	TOTAL SHEETS	SHEET NO.
600	(129,130-1)RS-3	ST. CLAIR	11	2
			CONTRACT NO. 76L33	
		ILLINOIS	FED. AID PROJECT	

CODE NO.	ITEM	UNIT	TOTAL QUANTITY	CONSTR. CODE	
				100% STATE	
				ROADWAY 0005	URBAN
40400001	FIBER-MODIFIED ASPHALT CRACK SEALING	FOOT	50000	50000	
40400020	BUMP REMOVAL	EACH	12	12	
40400114	MICRO-SURFACING, SINGLE PASS, TYPE II, MIXTURE D	SQ YD	109839	109839	
40600290	BITUMINOUS MATERIALS (TACK COAT)	POUND	49209	49209	
67000400	ENGINEER'S FIELD OFFICE, TYPE A	CAL MO	3	3	
67100100	MOBILIZATION	L SUM	1	1	
70102632	TRAFFIC CONTROL AND PROTECTION, STANDARD 701602	L SUM	1	1	
70102635	TRAFFIC CONTROL AND PROTECTION, STANDARD 701701	L SUM	1	1	
70300100	SHORT TERM PAVEMENT MARKING	FOOT	9660	9660	
70300150	SHORT TERM PAVEMENT MARKING REMOVAL	SQ FT	3220	3220	
70300210	TEMPORARY PAVEMENT MARKING LETTERS AND SYMBOLS	SQ FT	1888	1888	
70300220	TEMPORARY PAVEMENT MARKING - LINE 4"	FOOT	78086	78086	
70300250	TEMPORARY PAVEMENT MARKING - LINE 8"	FOOT	60	60	
70300260	TEMPORARY PAVEMENT MARKING - LINE 12"	FOOT	539	539	

CODE NO.	ITEM	UNIT	TOTAL QUANTITY	CONSTR. CODE	
				100% STATE	
				ROADWAY 0005	URBAN
70300280	TEMPORARY PAVEMENT MARKING - LINE 24"	FOOT	321	321	
* 78000100	THERMOPLASTIC PAVEMENT MARKING - LETTERS AND SYMBOLS	SQ FT	1888	1888	
* 78000200	THERMOPLASTIC PAVEMENT MARKING - LINE 4"	FOOT	78086	78086	
* 78000500	THERMOPLASTIC PAVEMENT MARKING - LINE 8"	FOOT	60	60	
* 78000600	THERMOPLASTIC PAVEMENT MARKING - LINE 12"	FOOT	539	539	
* 78000650	THERMOPLASTIC PAVEMENT MARKING - LINE 24"	FOOT	321	321	
X0301242	PIEZO AXLE SENSOR, CLASS II	FOOT	46	46	
X0327980	PAVEMENT MARKING REMOVAL - WATER BLASTING	SQ FT	29137	29137	
X3000001	RRPM PROTECTION	EACH	1211	1211	
X7015005	CHANGEABLE MESSAGE SIGN	CAL DAY	28	28	
∅ 20070604	TRAINEES TRAINING PROGRAM GRADUATE	hour	500	500	
X7030005	TEMPORARY PAVEMENT MARKING REMOVAL	SQ FT	29137	29137	

//  
 \* SPECIALTY ITEM  
 ∅ 0042

MODEL: D:\pwr\11084\BID\NTEC\Illinois.gov\TMDOT\Documents\DOT\_Office\01\refet\_B\Projects\76L33\CA\Drawings\Drawings\76L33-RK-500.dgn

USER NAME = rnholds	DESIGNED -	REVISED -
DRAWN -	REVISIONS -	
PLOT SCALE = 100.0000' / in.	CHECKED -	REVISED -
PLOT DATE = 12/16/2017	DATE -	REVISED -

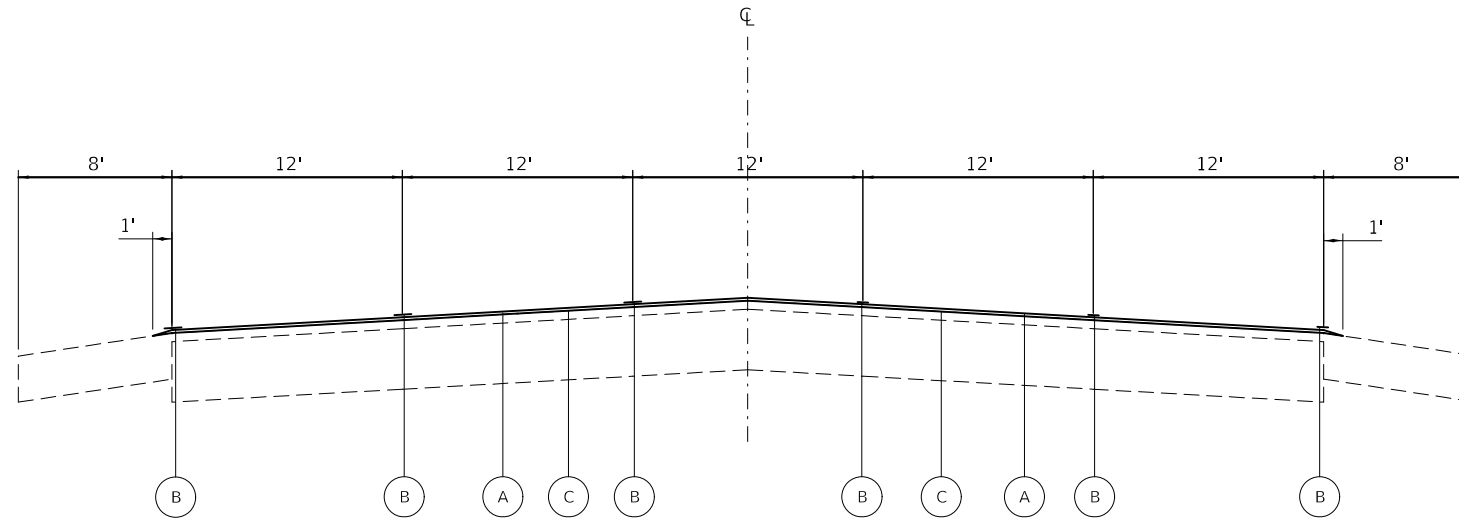
**STATE OF ILLINOIS  
DEPARTMENT OF TRANSPORTATION**

**SUMMARY OF QUANTITIES**

SCALE: SHEET OF SHEETS STA. TO STA.

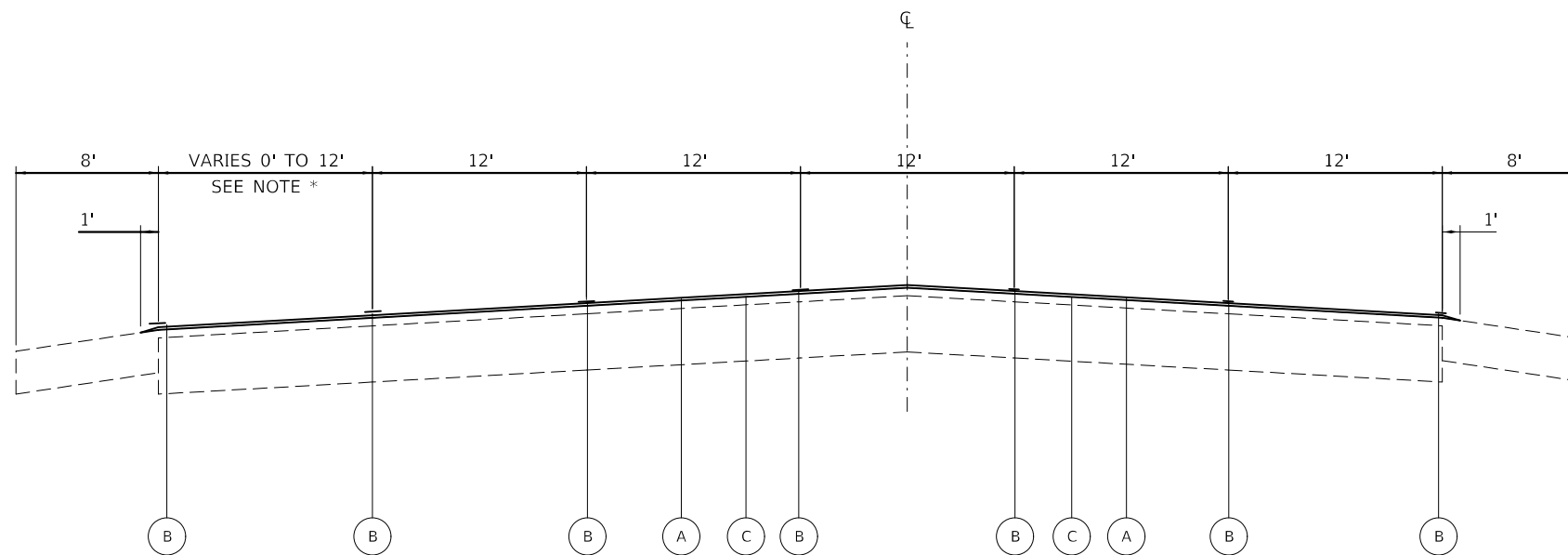
F.A.P. RTE.	SECTION	COUNTY	TOTAL SHEETS	SHEET NO.
600	(129.130-1)RS-3	ST. CLAIR	11	3
CONTRACT NO. 76L33				
ILLINOIS FED. AID PROJECT				





**PROPOSED TYPICAL SECTION**

STA. 376+58 TO STA. 516+88  
 STA. 521+31 TO STA. 524+27  
 STA. 528+43 TO STA. 534+80



**PROPOSED TYPICAL SECTION**

STA. 516+88 TO STA. 521+31  
 STA. 524+27 TO STA. 528+43

**LEGEND**

- ① EXISTING PAVEMENT, TYPE AND DEPTH VARIES
- ② EXISTING HMA RESURFACING, 1½"
- ③ EXISTING HMA SHOULDER 8"
- ④ EXISTING PAVEMENT MARKING
- (A) PROPOSED MICRO-SURFACING, SINGLE PASS, TYPE II, MIXTURE D
- (B) PROPOSED THERMOPLASTIC PAVEMENT MARKING
- (C) PROPOSED BITUMINOUS MATERIALS (TACK COAT)

\* SEE RESURFACING DETAILS FOR THE MICRO-SURFACING LIMITS AT THE RIGHT TURN LANES

MODEL: Default  
 FILE: \\mhc-pw\ulb\B&E\BID\ITEC\Illinois.gov\FW\DOT\Documents\1\DOT\_Offices\Director\B\Projects\0876L33\CADD\data\CAD\sheet\0876L33-2-1-1-1.dwg

USER NAME = ruholids	DESIGNED -	REVISED -
	DRAWN -	REVISED -
PLOT SCALE = 100.0000' / in.	CHECKED -	REVISED -
PLOT DATE = 12/6/2017	DATE -	REVISED -

**STATE OF ILLINOIS  
 DEPARTMENT OF TRANSPORTATION**

**TYPICAL SECTIONS**

SCALE: SHEET 2 OF 2 SHEETS STA. TO STA.

F.A.P. RTE.	SECTION	COUNTY	TOTAL SHEETS	SHEET NO.
600	(129,130-1)RS-3	ST. CLAIR	11	5
CONTRACT NO. 76L33			ILLINOIS FED. AID PROJECT	

PAVEMENT MARKING SCHEDULE **												
THERMOPLASTIC PAVEMENT MARKING												
LOCATION			LINE - 4"					LETTERS AND SYMBOLS	PAVEMENT MARKING REMOVAL - WATER BLASTING			
			SOLID WHITE	SOLID YELLOW	SOLID DOUBLE YELLOW	SKIP-DASH WHITE	SKIP-DASH YELLOW			SOLID WHITE	YELLOW DIAGONALS	WHITE STOP BAR
STA	TO	STA	FOOT	FOOT	FOOT	FOOT	FOOT	FOOT	FOOT	SQ FT	SQ FT	
376+58	TO	391+00	2884	2884						187.2	2983.4	
391+00	TO	391+70	140		140	847						
391+70	TO	393+29	477		318					31.2		
393+29	TO	393+51	22						37			
E O'fallon Dr. & Milburn School Rd												
394+43	TO	394+67	24						37		17375.2	
394+67	TO	396+27	480		320	4838				31.2		
396+27	TO	396+93	132		132							
396+93	TO	487+52	17833	18118			4530			1123.2		
487+52	TO	488+19	134		134							
488+19	TO	490+80	783		522					46.8		
490+80	TO	491+18	38					30	37			
Hollywood Heights Rd & Bethel Mine Rd												
491+93	TO	492+26	33					30		37	8778.7	
492+26	TO	494+17	573		382	2144				31.2		
494+17	TO	494+96	158		158							
494+96	TO	512+48	3504	3504			876			218.4		
512+48	TO	513+17	138		138							
513+17	TO	514+46	387		258					15.6		
514+46	TO	515+93	294		294					15.6		
515+93	TO	516+88	95							83		
516+88	TO	518+95	621		828				334	31.2		
518+95	TO	520+51	312		624				45			
520+51	TO	521+31	160		160							
521+31	TO	522+82	453		302					15.6		
522+82	TO	523+55	146		146					15.6		
523+55	TO	524+27	72							90		
524+27	TO	526+26	597		796				160			
526+26	TO	528+43	434	434					108	31.2		
528+43	TO	534+80	1274	1274					318	93.6		
SUBTOTAL			32198	26214	5652	7829	6193	60	539	321	1887.6	29137.3
GRAND TOTAL						78086		60	539	321	1888	29137

\*\* SEE SIDE ROAD SCHEDULE FOR THE LOCATIONS OF ADDITIONAL SIDEROADS

MAINLINE PAVING SCHEDULE				
LOCATION			BITUMINOUS MATERIALS (TACK COAT)	MICRO-SURFACING, SINGLE PASS, TYPE II, MIXTURE D
STA	TO	STA	POUND	SQ YD
376+58	TO	516+88	43493	96651
516+88	TO	521+31	1568	3485
521+31	TO	524+27	918	2039
524+27	TO	528+43	1255	3276
528+43	TO	534+80	1975	4388
GRAND TOTAL			49209	109839

SHORT TERM PAVEMENT MARKING SCHEDULE **						
LOCATION			LINE - 4"			SHORT TERM PAVEMENT MARKING REMOVAL
			SKIP-DASH YELLOW	SKIP-DASH WHITE	WHITE DIAGONALS	
STA	TO	STA	FOOT	FOOT	FOOT	SQ FT
376+58	TO	393+51	616	308	136	353
E O'fallon Dr. & Milburn School Rd						
394+43	TO	491+18	3520	1760	764	2015
Hollywood Heights Rd & Bethel Mine Rd						
491+93	TO	534+80	1480	740	336	852
SUBTOTAL			5616	2808	1236	3220
GRAND TOTAL			9660			3220

\*\* SEE SIDE ROAD SCHEDULE FOR THE LOCATIONS OF ADDITIONAL SIDEROADS

RRPM PROTECTION SCHEDULE			
LOCATION			RRPM PROTECTION (EACH)
STA	TO	STA	
376+58	TO	391+00	108
391+00	TO	391+70	4
391+70	TO	393+29	12
394+67	TO	396+27	16
396+27	TO	396+93	6
396+93	TO	487+52	678
487+52	TO	488+19	6
488+19	TO	490+80	27
490+80	TO	492+26	8
492+26	TO	494+17	19
494+17	TO	494+96	6
494+96	TO	512+48	132
512+48	TO	513+17	6
513+17	TO	515+93	27
515+93	TO	516+88	2
516+88	TO	518+95	25
518+95	TO	520+51	12
520+51	TO	521+31	4
521+31	TO	523+55	24
523+55	TO	524+27	2
524+27	TO	526+26	23
526+26	TO	528+43	16
528+43	TO	534+80	48
SUB TOTAL			1211
GRAND TOTAL			1211

BUMP REMOVAL SCHEDULE *		
LOCATION	LANE	BUMPS EACH
406+80	SB DRIVING LANE	1
411+80	SB PASSING LANE	1
431+58	BIDIRECTIONAL	1
456+59	NB PASSING LANE	1
459+80	SB DRIVING LANE	1
461+58	NB DRIVING LANE	1
504+80	SB DRIVING LANE	1
507+80	SB PASSING LANE	1
507+80	BIDIRECTIONAL	1
507+80	NB PASSING LANE	1
508+58	BIDIRECTIONAL	1
684+80	SB DRIVING LANE	1
GRAND TOTAL		12

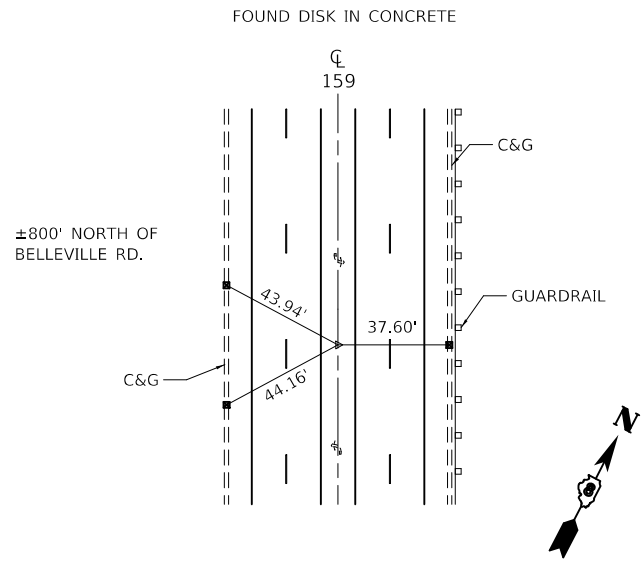
\* LOCATIONS SHOWN IN THE PLANS ARE APPROXIMATE. ALL BUMP GRINDING SHALL BE PERFORMED ACROSS THE FULL WIDTH OF THE LANE. SEE TYPICAL SECTIONS FOR LANE WIDTHS

CRACK SEALING SCHEDULE***		
LOCATION		LENGTH FOOT
376+58	TO 534+80	50000
GRAND TOTAL		50000

\*\*\* CRACK SEALING QUANTITIES WILL PRIMARILY BE LOCATED ALONG THE THREE LONGITUDINAL JOINTS IN THE HMA SURFACE AND IN THE BI-DIRECTIONAL TURN LANE AS TRANSVERSE CRACKING. EXACT LOCATIONS WILL BE DETERMINED BY THE ENGINEER

SIDE ROAD SCHEDULE		
LOCATION	LENGTH	
NAME	STA.	FOOT
E. O'FALLON RD. / MILBURN SCHOOL RD.	394+00	92
STONEWOLF TRAIL	409+80	155
PIN OAK LANE	443+62	130
HOLLYWOOD HEIGHTS RD. / BETHEL MINE RD.	491+56	75
TANGLE WOOD PKWY.	516+44	95
BELLEVILLE RD	524+00	120

MODEL: Default FILE: \\paul08@EBIDNTEC.Milwaukee.gov\pww\DOT\Documents\DOT - Offices\Director - Projects\08761331\00\Drawn\CDR\here\08761331-PS-SCHEM.DWG

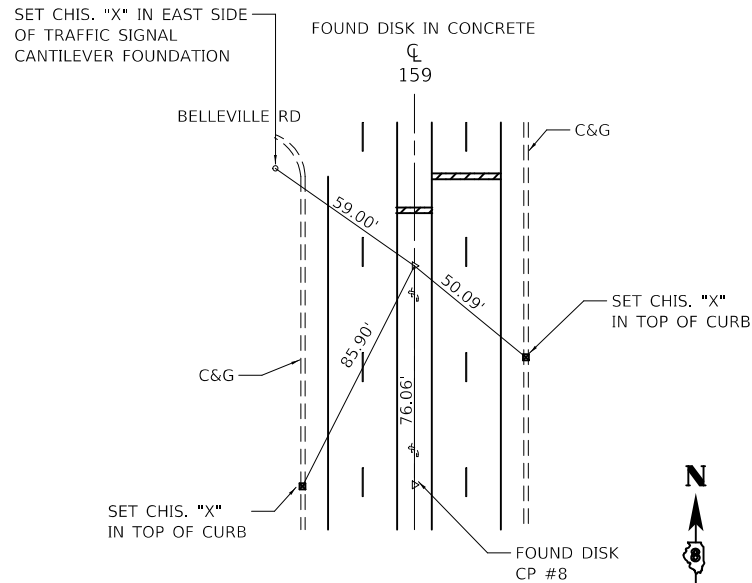


**CP #6**

N=721,669.370  
E=2,348,214.969

\*ALL TIES ARE CHISELED "X" ON TOP OF CURB

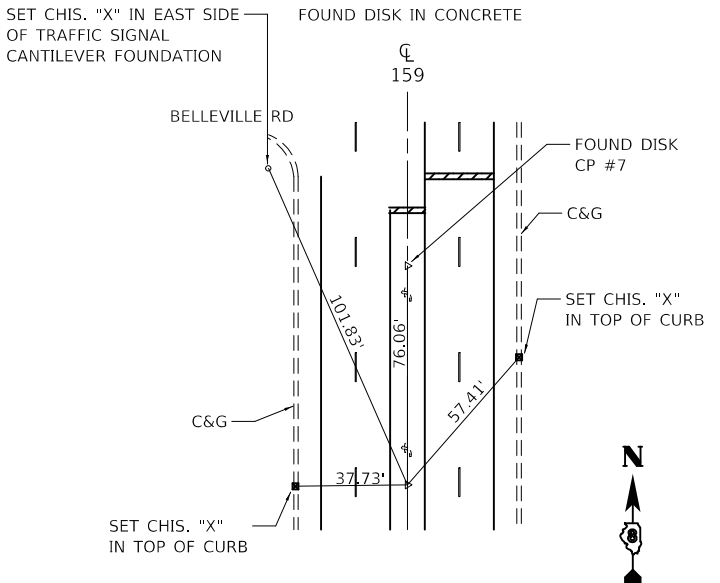
\*ALL TIES PULLED DIRECT



**CP #7**

N=720,849.123  
E=2,348,344.950

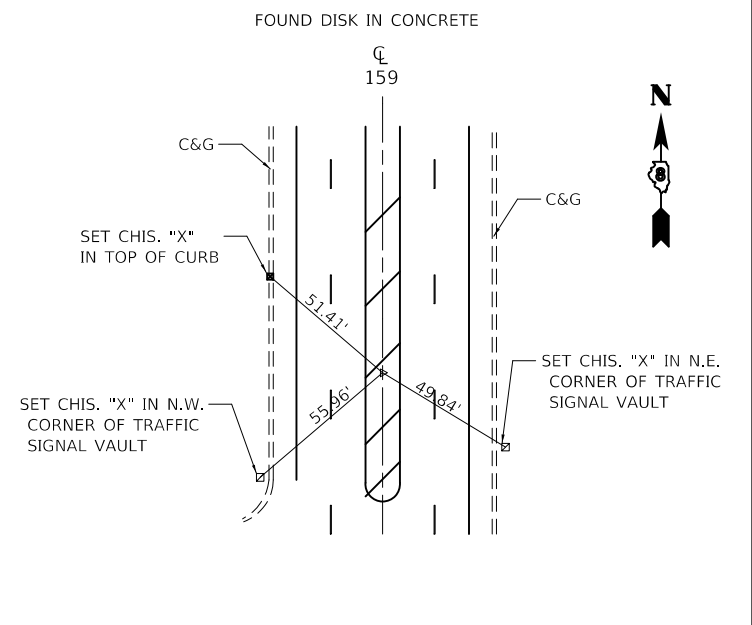
\*ALL TIES PULLED DIRECT



**CP #8**

N=720,773.083  
E=2,348,346.016

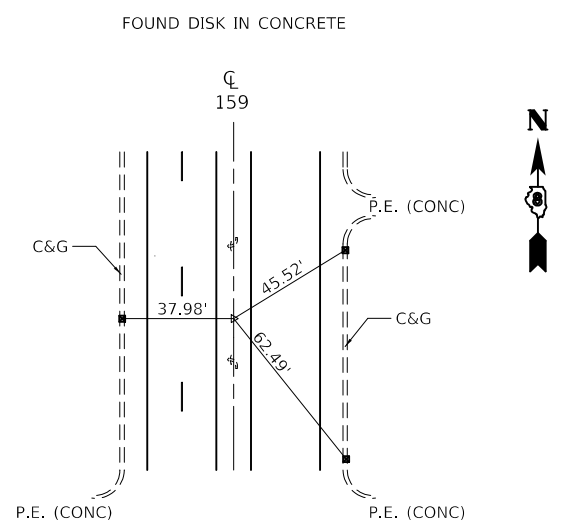
\*ALL TIES PULLED DIRECT



**CP #9**

N=720,257.081  
E=2,348,337.955

\*ALL TIES PULLED DIRECT



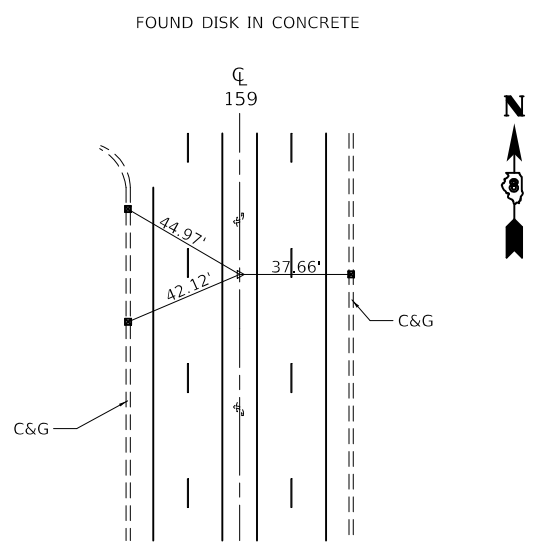
**CP #10**

N=719,741.079  
E=2,348,329.704

\*ALL TIES ARE CHISELED "X" ON TOP OF CURB

\*ALL TIES PULLED DIRECT

SEE SHEET 2 OF 2 FOR CP#10

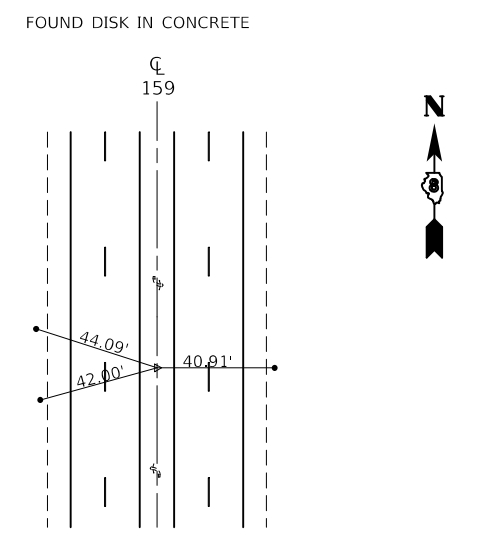


**CP #12**

N=719,741.079  
E=2,348,329.704

\*ALL TIES ARE CHISELED "X" ON TOP OF CURB

\*ALL TIES PULLED DIRECT



**CP #13**

N=708,891.952  
E=2,348,486.679

±1000' NORTH OF MILBURN SCHOOL RD./ E. O'FALLON DR. INTERSECTION

\*ALL TIES ARE 3/8" IRON PINS ± 3' FROM E.O.S.

\*ALL TIES PULLED DIRECT

MODEL: Default  
FILE: \h:\c:\p\ul\B&E\BID\ITEC\Illinois\gov\p\ul\DOT\Documents\DOT Office\Director\B\Projects\0876133\CADD\data\CAD\sheet\0876133\FH-Intersec.dgn

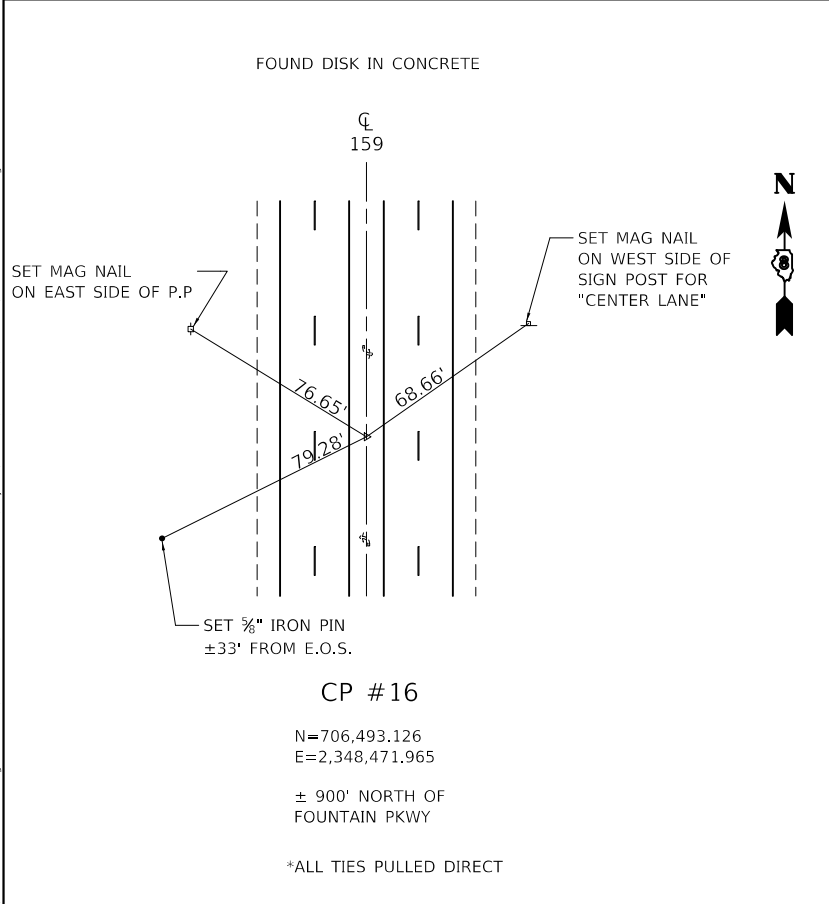
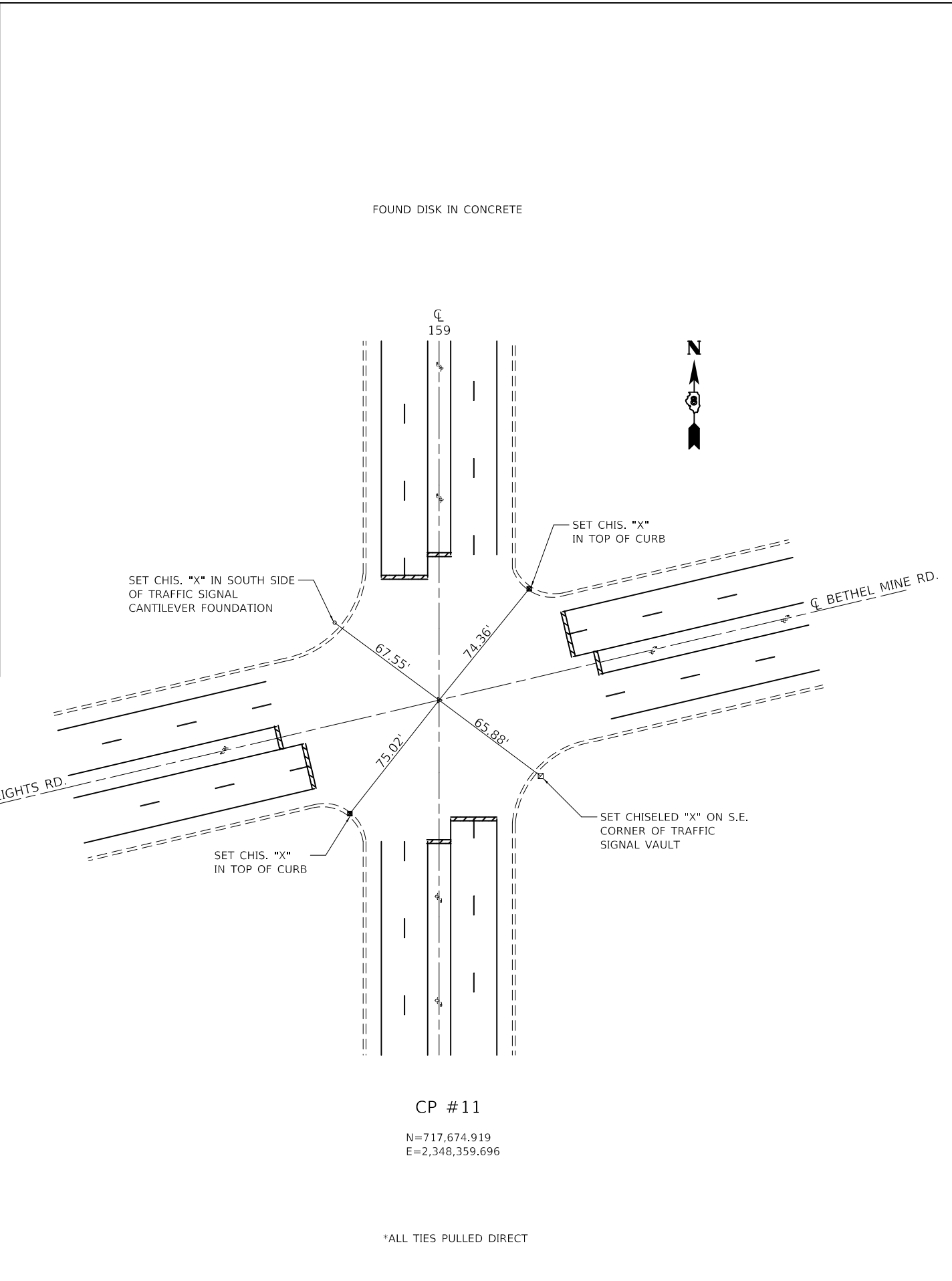
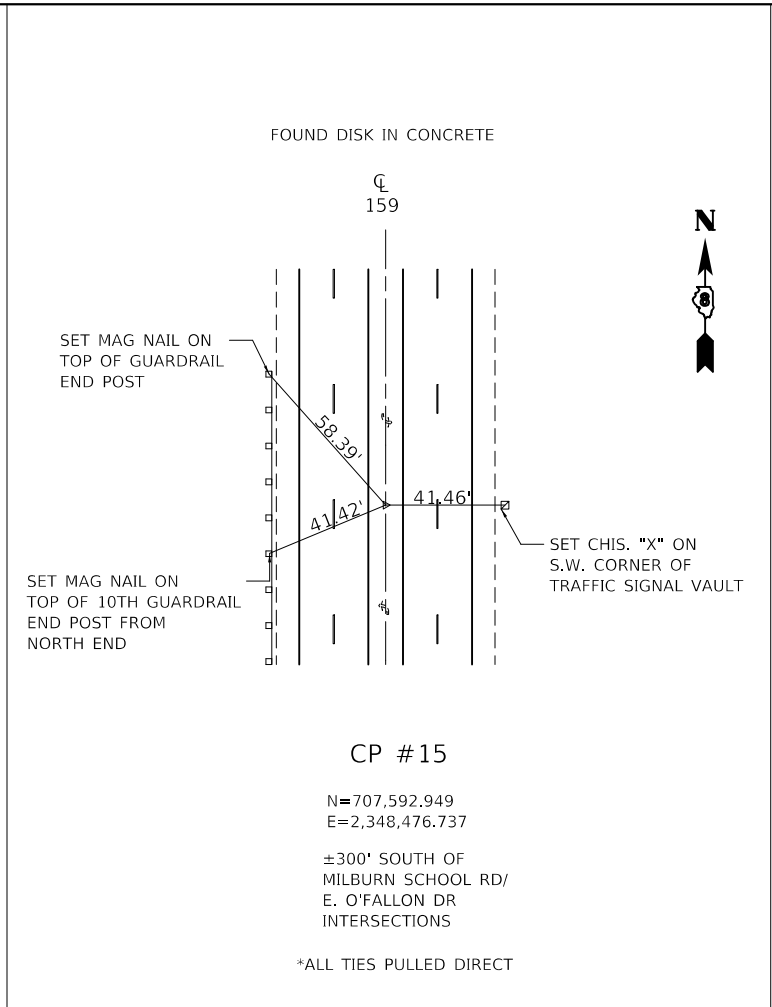
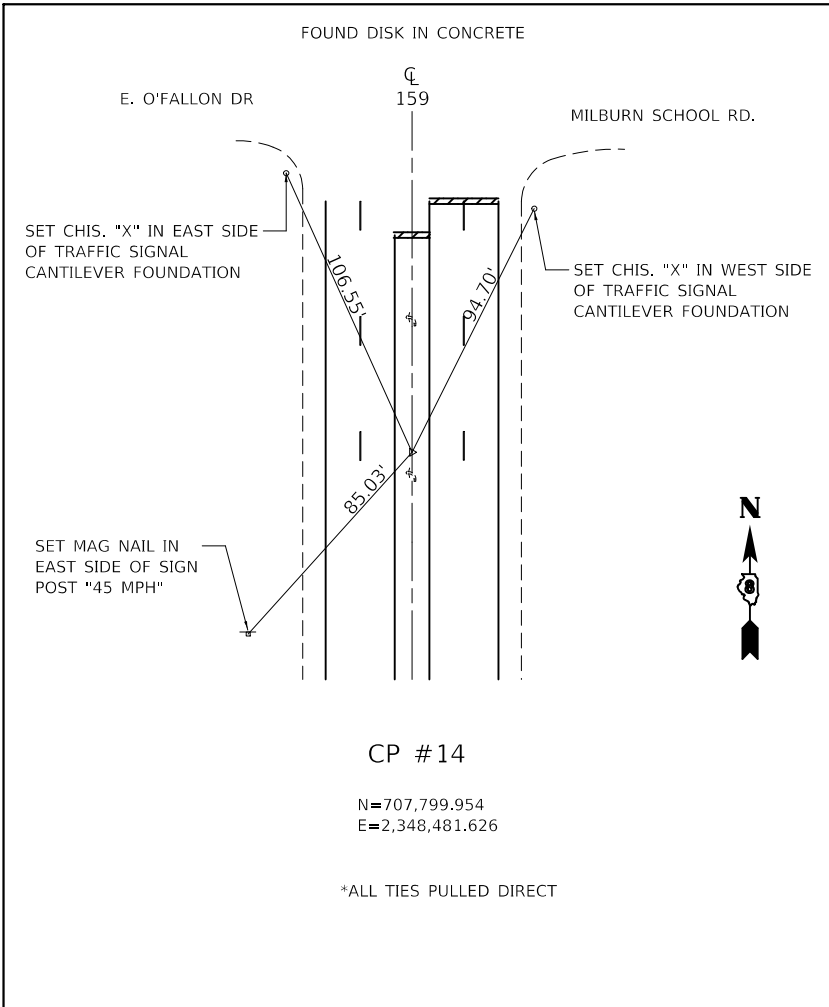
USER NAME = ruholids	DESIGNED -	REVISED -
	DRAWN -	REVISED -
PLOT SCALE = 100,0000' / in.	CHECKED -	REVISED -
PLOT DATE = 12/6/2017	DATE -	REVISED -

**STATE OF ILLINOIS  
DEPARTMENT OF TRANSPORTATION**

**ALIGNMENT, TIES, AND BENCHMARKS**

SCALE: SHEET 1 OF 2 SHEETS STA. TO STA.

F.A.P. RTE.	SECTION	COUNTY	TOTAL SHEETS	SHEET NO.
600	(129, 130-1)RS-3	ST. CLAIR	11	7
CONTRACT NO. 76L33			ILLINOIS FED. AID PROJECT	



MODEL: Default  
 FILE: \\nashville\pwworking\Illinois\pwworking\DOT Documents\DOT Office\Drawings\DOT\Projects\10761331\CADD\data\CAD\sheet\08761331\sh-intersec.dgn

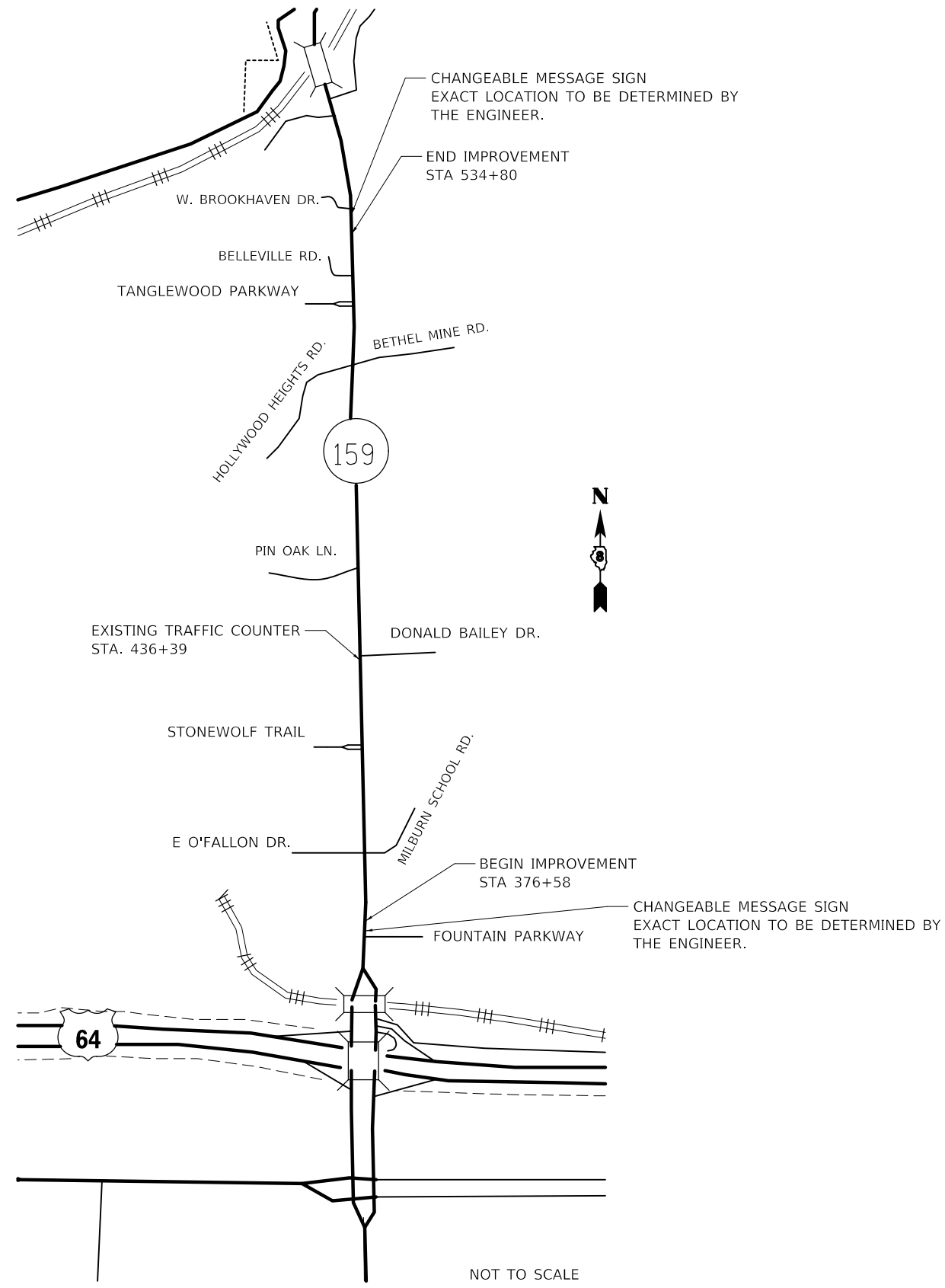
USER NAME = ruholids	DESIGNED -	REVISED -
DRAWN -	REVISOR -	REVISION -
PLOT SCALE = 100.0000' / in.	CHECKED -	REVISOR -
PLOT DATE = 12/6/2017	DATE -	REVISION -

**STATE OF ILLINOIS  
DEPARTMENT OF TRANSPORTATION**

<b>ALIGNMENT, TIES, AND BENCHMARKS</b>			
SCALE:	SHEET 2	OF 2	SHEETS
STA.	TO STA.		

F.A.P. RTE.	SECTION	COUNTY	TOTAL SHEETS	SHEET NO.
600	(129, 130-1)RS-3	ST. CLAIR	11	8
CONTRACT NO. 76L33				
ILLINOIS FED. AID PROJECT				





MODEL: Default  
 FILE: \\nashville.pva\ill08\B&E\ID\NTEC\Illinois\gov\PIV\DOT\Documents\DOT - Offices\District 8\Projects\0876L33\CADD\data\CAD\sheet\0876L33-9-FH-Intersec.dgn

USER NAME = ruholtds	DESIGNED -	REVISED -
	DRAWN -	REVISED -
PLOT SCALE = 100,0000' / in.	CHECKED -	REVISED -
PLOT DATE = 12/6/2017	DATE -	REVISED -

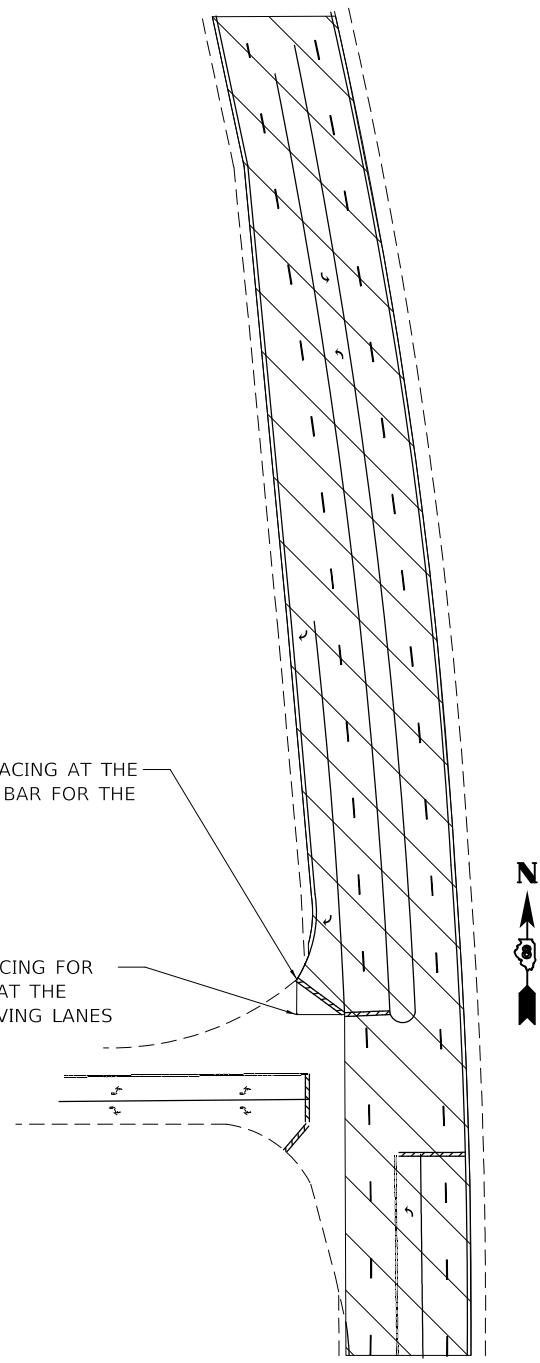
**STATE OF ILLINOIS  
DEPARTMENT OF TRANSPORTATION**

**LOCATION MAP**

SCALE: SHEET OF SHEETS STA. TO STA.

F.A.P. RTE.	SECTION	COUNTY	TOTAL SHEETS	SHEET NO.
600	(129, 130-1)RS-3	ST. CLAIR	11	9
CONTRACT NO. 76L33			ILLINOIS FED. AID PROJECT	

MODEL: Default  
 FILE NAME: P:\1108\B&E\DOT\Illinois\pwr\DOT\Documents\DOT\_Offices\Director\Projects\0876133\CAD\data\CAD\heers\0876133\rs-h-intersec.dgn

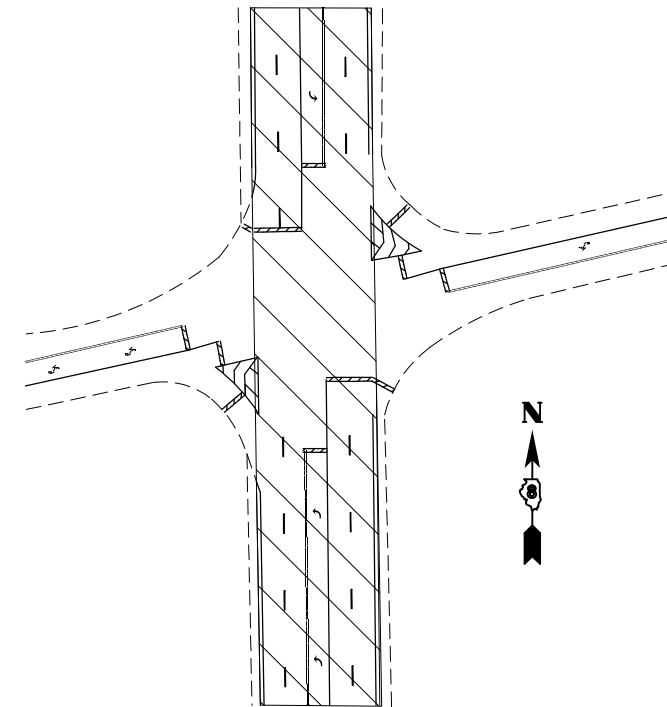


**TURN LANE RESURFACING DETAIL**

TYPICAL DESIGNATED RIGHT TURN LANE DETAIL

NOT TO SCALE

 LIMITS FOR MICRO-SURFACING  
 SEE TYPICAL SECTIONS FOR DIMENSIONS

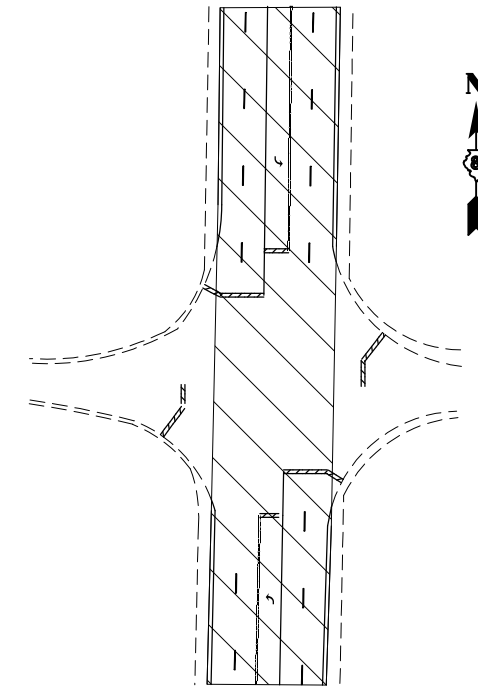


**INTERSECTION DETAIL**

IL 159 & Hollywood Heights Rd/Bethel Mine Rd.

NOT TO SCALE

 LIMITS FOR MICRO-SURFACING  
 SEE TYPICAL SECTIONS FOR DIMENSIONS



**INTERSECTION DETAIL**

IL 159 & E Ofallon Dr/Milburn School Rd

NOT TO SCALE

 LIMITS FOR MICRO-SURFACING  
 SEE TYPICAL SECTIONS FOR DIMENSIONS

USER NAME = ruholtds	DESIGNED -	REVISED -
	DRAWN -	REVISED -
PLOT SCALE = 100.0000 ' / in.	CHECKED -	REVISED -
PLOT DATE = 12/6/2017	DATE -	REVISED -

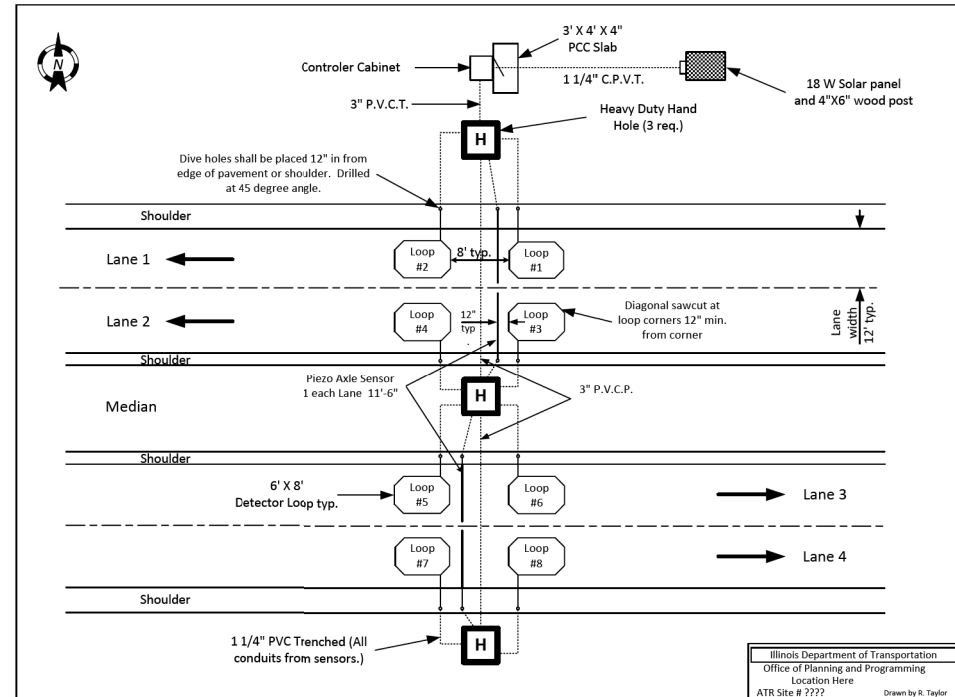
**STATE OF ILLINOIS  
 DEPARTMENT OF TRANSPORTATION**

**RESURFACING DETAILS**

SCALE: SHEET OF SHEETS STA. TO STA.

F.A.P. RTE.	SECTION	COUNTY	TOTAL SHEETS	SHEET NO.
600	(129, 130-1)RS-3	ST. CLAIR	11	10
			CONTRACT NO. 76L33	
			ILLINOIS FED. AID PROJECT	

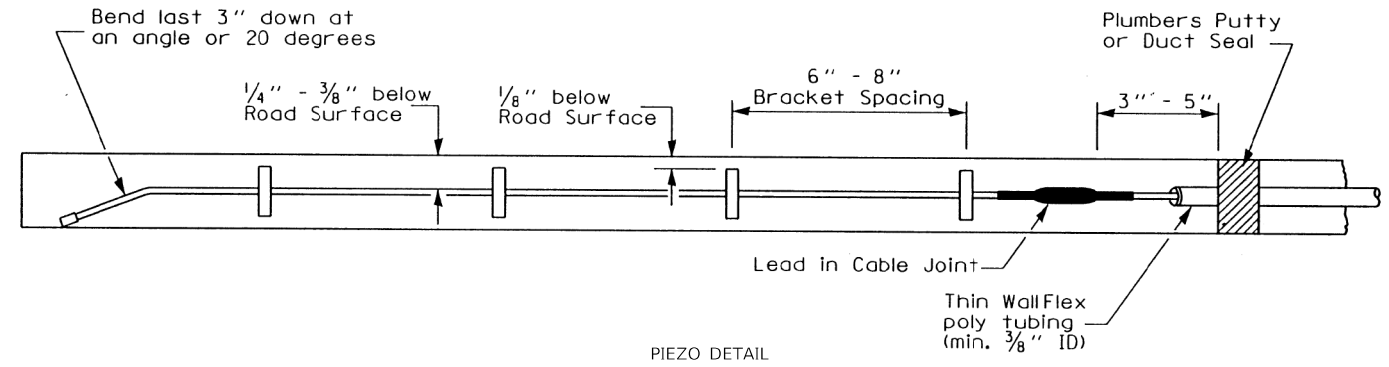
**Layout for ATR Test Site Location**



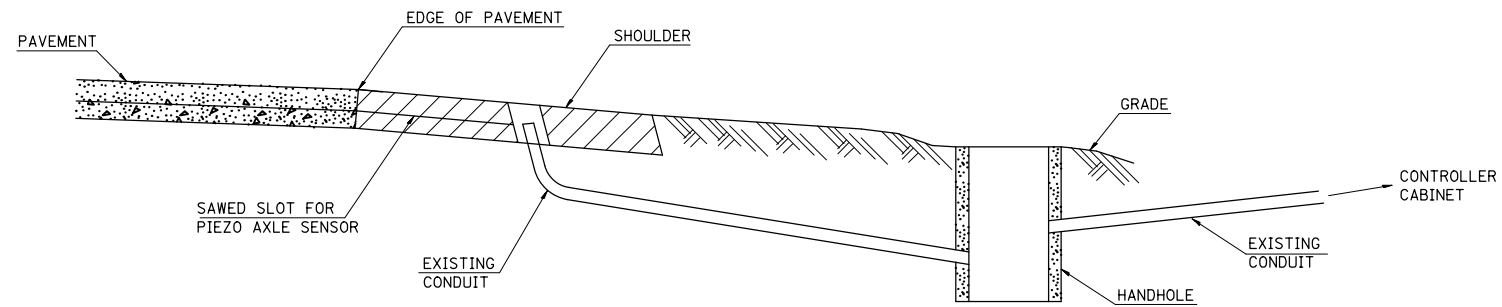
Illinois Department of Transportation  
Office of Planning and Programming  
Location Here  
ATR Site # 2222  
Drawn by: Taylor

EXISTING TRAFFIC COUNTER PLANS  
STA 436+41

NOT TO SCALE



PIEZO DETAIL  
NOT TO SCALE



DETAIL  
(NO SCALE)  
RE-USE EXISTING UNDERGROUND CONDUIT

- 1 DRILL OUT PAVEMENT SEALANT AND CLEAN EXISTING CONDUIT.
- 2 REMOVE EXISTING CABLE TO CONTROLLER CABINET.
- 3 FILL HOLE WITH APPROVED SEALER. PREVENT SEALER FROM ENTERING INTO CONDUIT

NOT A PAY ITEM. THE COST OF THIS WORK SHALL BE INCLUDED IN THE PAY ITEM "PIEZO AXLE SENSOR, CLASS II".

TRAFFIC COUNTER SCHEDULE*		
ITEM	UNIT	QUANTITY
PIEZO ELECTRIC AXLE SENSOR, CLASS II	FOOT	46
GRAND TOTAL		46

\*SEE SPECIAL PROVISIONS FOR PIEZO INSTALLATION INSTRUCTIONS

MODEL: Default  
FILE: \\nas01\pww\illinois\gov\pww\DOT\Documents\DOT - Offices\District 8\Projects\0876133\CADD\data\CAD\sheet\0876133-2-11-intersec.dgn

USER NAME = ruholids	DESIGNED -	REVISED -
PLOT SCALE = 100,0000' / in.	DRAWN -	REVISED -
PLOT DATE = 12/6/2017	CHECKED -	REVISED -
	DATE -	REVISED -

STATE OF ILLINOIS  
DEPARTMENT OF TRANSPORTATION

TRAFFIC COUNTER DETAILS	
SCALE:	SHEET OF SHEETS STA. TO STA.

F.A.P. RTE.	SECTION	COUNTY	TOTAL SHEETS	SHEET NO.
600	(129, 130-1)RS-3	ST. CLAIR	11	11
			CONTRACT NO. 76L33	
			ILLINOIS FED. AID PROJECT	