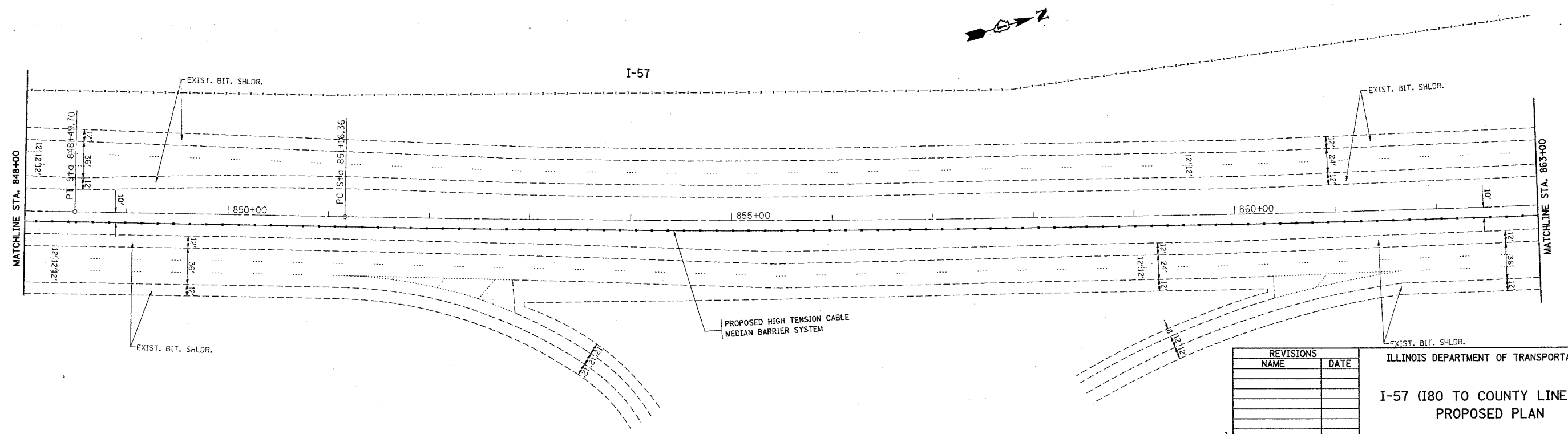
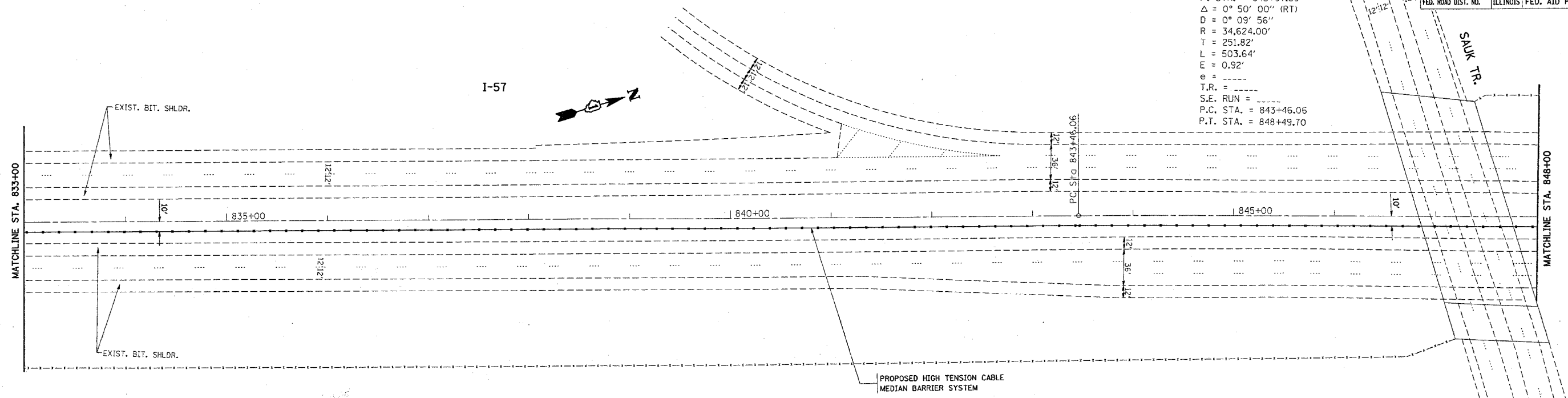


*REF-top050
*REF-top051

CONTRACT NO. 60A09

F.A.I. RTE.	SECTION	COUNTY	TOTAL SHEETS	SHEET NO.
I-57	2005-038 I	WILL	58	34
STA. 833+00		TO STA. 863+00		
FED. ROAD DIST. NO.	ILLINOIS	FED. AID PROJECT		

EXIST. CURVE I57-9
 P.I. STA. = 845+97.89
 $\Delta = 0^\circ 50' 00''$ (RT)
 $D = 0^\circ 09' 56''$
 $R = 34,624.00'$
 $T = 251.82'$
 $L = 503.64'$
 $E = 0.92'$
 $e =$
 $T.R. =$
 $S.E. RUN =$
 $P.C. STA. = 843+46.06$
 $P.T. STA. = 848+49.70$



REVISIONS	
NAME	DATE

ILLINOIS DEPARTMENT OF TRANSPORTATION
 I-57 (I80 TO COUNTY LINE RD.)
 PROPOSED PLAN

SCALE: VERT. 1"=50'
 HORIZ. 1"=50'
 DATE 1/4/2006
 DRAWN BY
 CHECKED BY

PLT DATE = 1/4/2006
 FILE NAME = c:\p\proj\i57\27605\sh_rdy_ab.dgn
 USER = jstacy