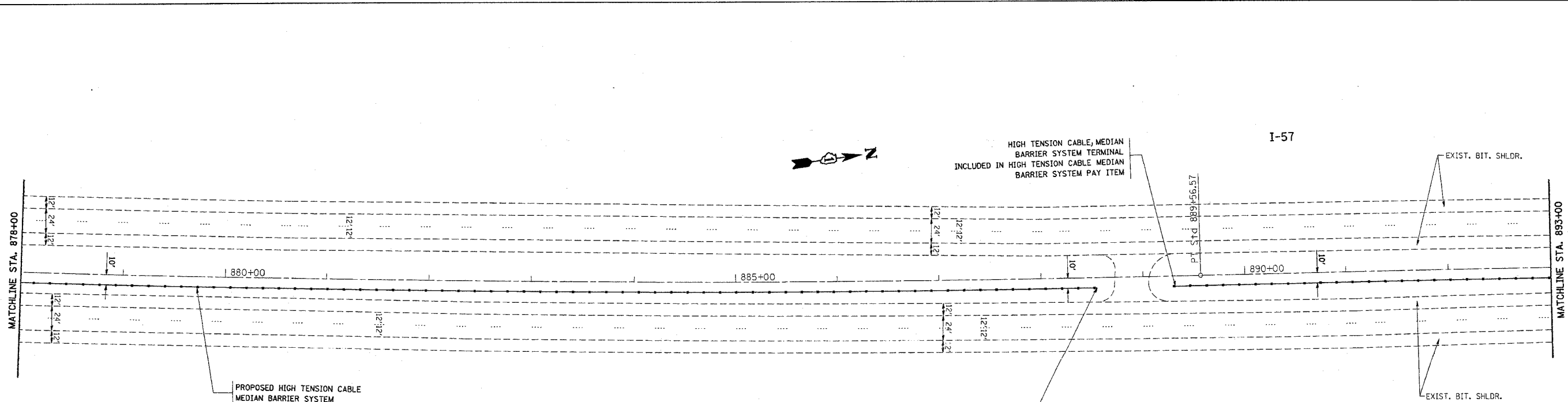
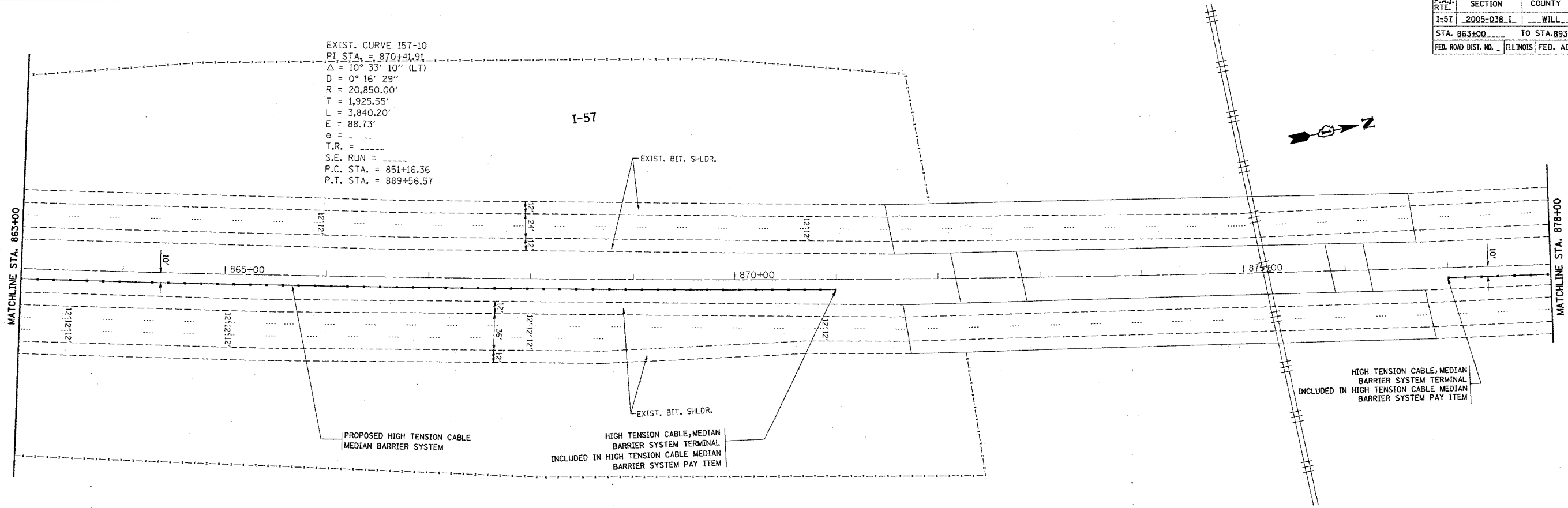


*REF-topo52
*REF-topo53

CONTRACT NO. 60A09

F.A.I. RTE.	SECTION	COUNTY	TOTAL SHEETS	SHEET NO.
I-57	2005-038 I	WILL	58	35
STA. 863+00		TO STA. 893+00		
FED. ROAD DIST. NO. 1		ILLINOIS FED. AID PROJECT		

EXIST. CURVE I57-10
PI STA. = 870+41.91
 $\Delta = 10^{\circ} 33' 10''$ (LT)
D = 0° 16' 29"
R = 20,850.00'
T = 1,925.55'
L = 3,840.20'
E = 88.73'
e = -----
T.R. = -----
S.E. RUN = -----
P.C. STA. = 851+16.36
P.T. STA. = 889+56.57



PLOT DATE = 1/4/2006
FILE NAME = c:\p\proj\secta\127685\ah_rdg_ab.dgn
PLOT SCALE = 500.0000 / IN.
USER NAME = lrazehrf

REVISIONS	
NAME	DATE

ILLINOIS DEPARTMENT OF TRANSPORTATION
**I-57 (I80 TO COUNTY LINE RD.)
PROPOSED PLAN**
SCALE: VERT. 1"=50'
HORIZ. 1"=50'
DATE 1/4/2006
DRAWN BY
CHECKED BY