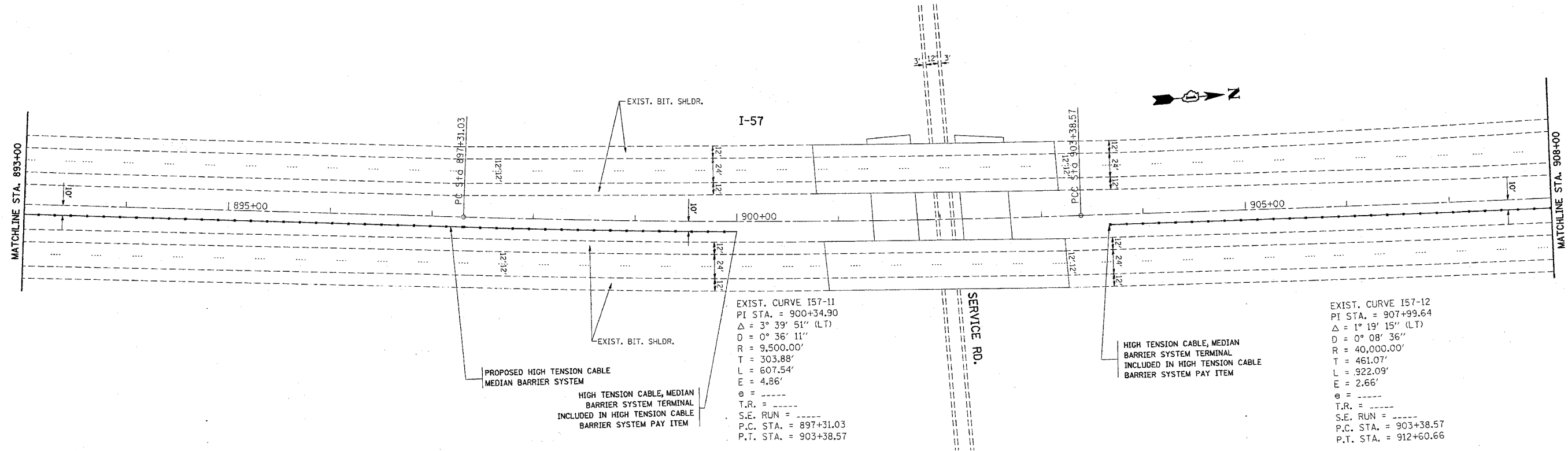


*REF-100054
*REF-100055

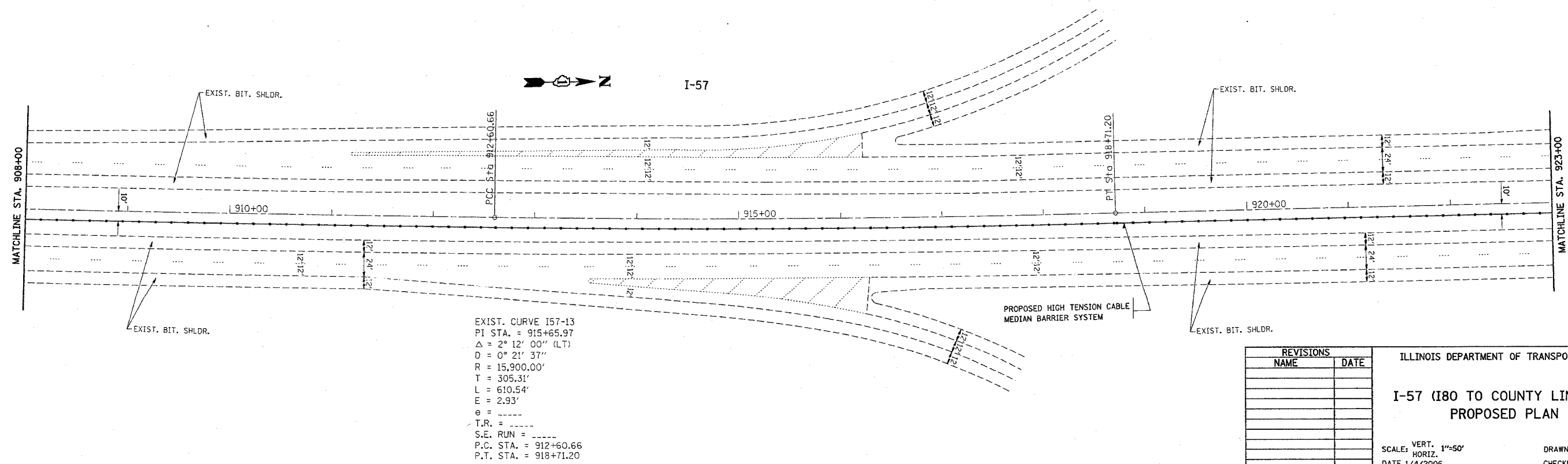
CONTRACT NO. 60A09

F.A.I. RTE.	SECTION	COUNTY	TOTAL SHEETS	SHEET NO.
I-57	2005-038.L	WILL	58	36
STA. 893+00		TO STA. 923+00		
FED. ROAD DIST. NO.		ILLINOIS FED. AID PROJECT		



EXIST. CURVE I57-11
PI STA. = 900+34.90
 $\Delta = 3^\circ 39' 51''$ (LT)
D = $0^\circ 36' 11''$
R = 9,500.00'
T = 303.88'
L = 607.54'
E = 4.86'
 $\theta =$ -----
T.R. = -----
S.E. RUN = -----
P.C. STA. = 897+31.03
P.T. STA. = 903+38.57

EXIST. CURVE I57-12
PI STA. = 907+99.64
 $\Delta = 1^\circ 19' 15''$ (LT)
D = $0^\circ 08' 36''$
R = 40,000.00'
T = 461.07'
L = 922.09'
E = 2.66'
 $\theta =$ -----
T.R. = -----
S.E. RUN = -----
P.C. STA. = 903+38.57
P.T. STA. = 912+60.66



EXIST. CURVE I57-13
PI STA. = 915+65.97
 $\Delta = 2^\circ 12' 00''$ (LT)
D = $0^\circ 21' 37''$
R = 15,900.00'
T = 305.31'
L = 610.54'
E = 2.93'
 $\theta =$ -----
T.R. = -----
S.E. RUN = -----
P.C. STA. = 912+60.66
P.T. STA. = 918+71.20

REVISIONS	
NAME	DATE

ILLINOIS DEPARTMENT OF TRANSPORTATION
**I-57 (I80 TO COUNTY LINE RD.)
PROPOSED PLAN**
SCALE: VERT. 1"=50'
HORIZ. 1"=50'
DATE 1/4/2006
DRAWN BY
CHECKED BY

PLOT DATE = 1/4/2006
FILE NAME = s:\Vp\c\ees\ad27805\m\rdy\ab.dgn
PLOT SCALE = 50.0000' / IN.
USER NAME = lisaakr