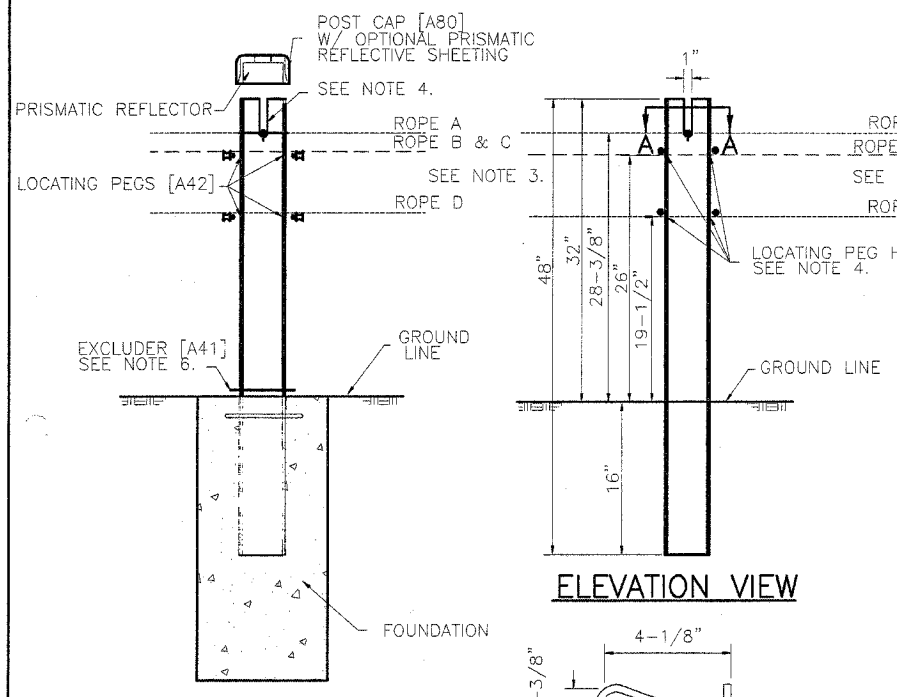


FBI RTE	SECTION	COUNTY	TOTAL SHEETS	SHEET NO.
57	2005-038 I	COOK/WILL	58	52
STA.		STA.		
FED. ROAD DIST. NO.		ILLINOIS	FED. AID PROJECT	

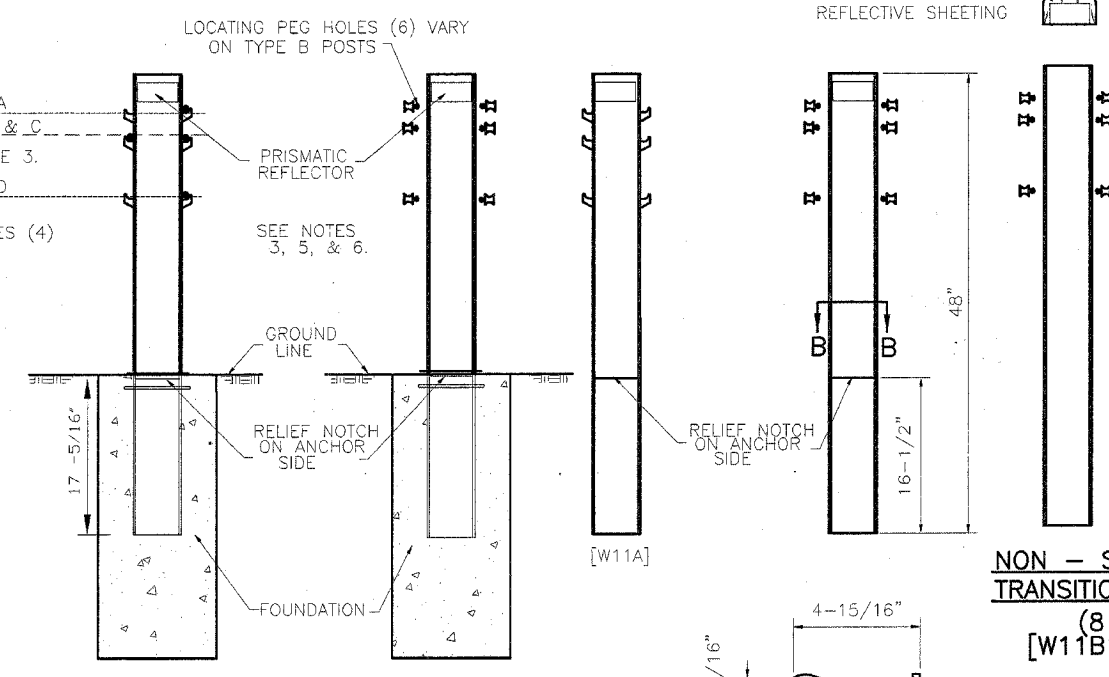
**NOTES:**

1. RADIUS EDGE OF POSTS SHALL BE ON THE APPROACH SIDE OF TRAFFIC.
2. ROPES B, C AND D INTERWEAVE BETWEEN ALL POSTS. SEE NOTE 3.
3. THE 15 TRANSITION LINE POSTS ADJACENT TO WRGT END TERMINAL DO NOT HAVE TOP ROPE SLOTS. THE TOP ROPE WEAVES ON EITHER SIDE OF POSTS UNTIL THE FIRST LINE POST WITH A SLOT.
4. POSTS PEG HOLES ARE PRE-DRILLED SO THAT ROPES MAY BE PLACED ON EITHER SIDE OF POST DEPENDING ON ROPE WEAVE PATTERN.
5. PRISMATIC REFLECTIVE SHEETING (ADHESIVE BACK) WHEN SPECIFIED SHALL BE FIELD APPLIED. SPECIFY COLOR, POST INTERVAL AND SINGLE OR DOUBLE SIDED. SEE SHEET 6 FOR CAP DETAILS.
6. EXCLUDER TO BE PUSHED DOWN TIGHT AGAINST TOP OF SOCKET. SOCKET SHOULD BE FLUSH WITH THE TOP OF THE FOUNDATION.
7. CONCRETE TO BE 3,500 PSI MINIMUM. EXPOSED SURFACES TO BE HAND TROWELED.
8. WRGT END ANCHOR TERMINAL POSTS (TYPE A & B) TO BE PLACED WITH WEAKENING CUT (RELIEF NOTCH) TOWARD END ANCHOR.



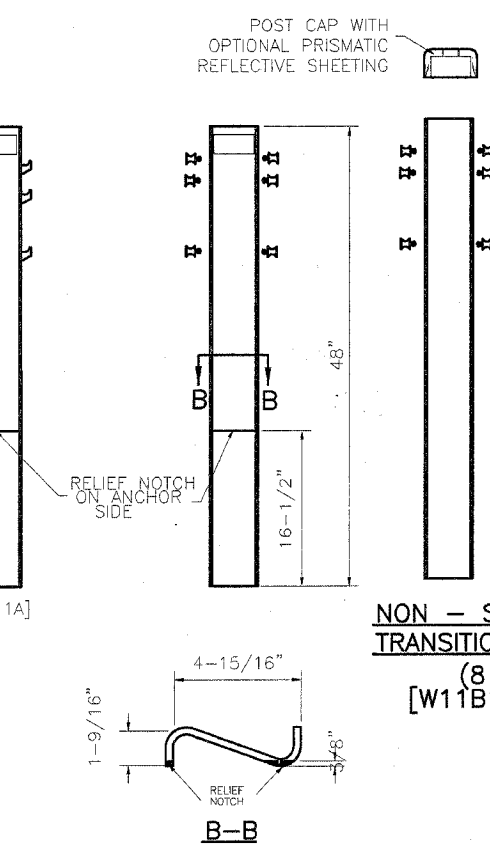
**SOCKETED LINE POST ASSEMBLY**

**LINE POST DETAIL [A11]**



**\* POST TYPE 'A' POST #1**  
**POST TYPE 'B' POST #2 THRU 4**

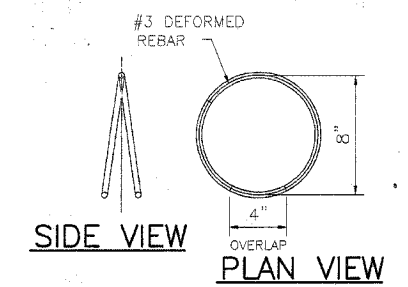
**WRGT TERMINAL POSTS ASSEMBLY**



**POSTS TYPE A & B DETAILS**

**NON - SLOTTED TRANSITION LINE POST (8 GA) [W11B1/B2/B3]**

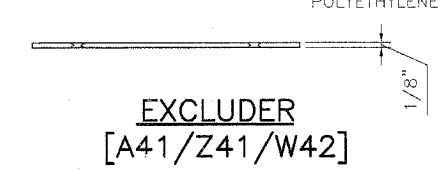
**POST ORIENTATION**  
LEFT HAND POST [A11L] RIGHT HAND POST [A11R]



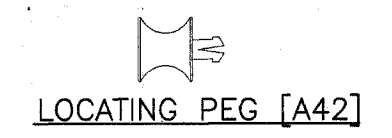
**REINFORCING RING DETAIL [A43] (BY OTHERS)**



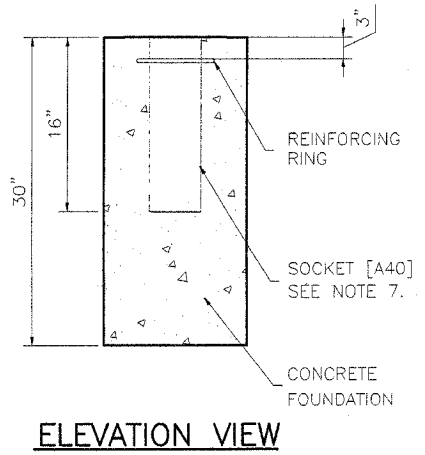
MATERIAL: LOW DENSITY POLYETHYLENE



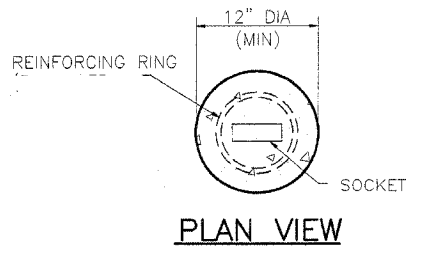
**EXCLUDER [A41/Z41/W42]**



**LOCATING PEG [A42]**

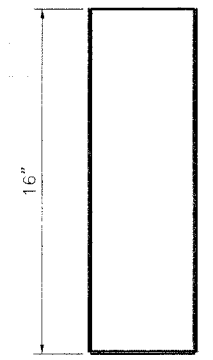


**ELEVATION VIEW**

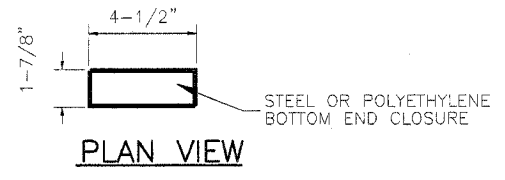


**PLAN VIEW**

**LINE POST FOUNDATION**

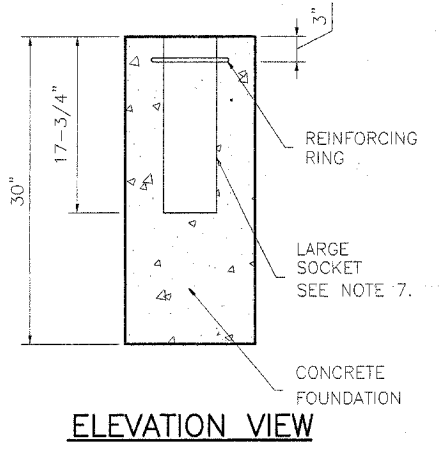


**ELEVATION VIEW**

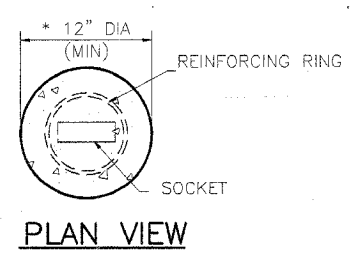


**PLAN VIEW**

**LINE POST SOCKET [A40]**

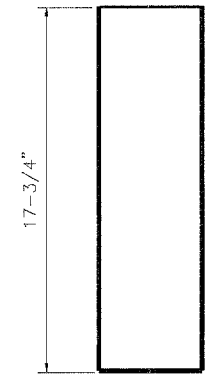


**ELEVATION VIEW**

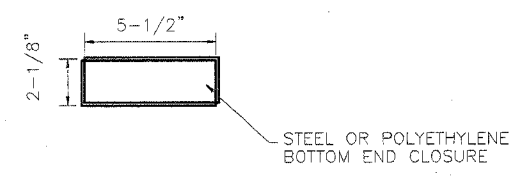


**PLAN VIEW**

**WRGT TERMINAL POST FOUNDATION**



**ELEVATION VIEW**



**PLAN VIEW**

**WRGT LARGE SOCKET [W40]**

\* POST TYPE 'A' FOUNDATION 14" DIA.

The information herein is proprietary to BRIFEN USA, and shall not be disclosed, duplicated or used otherwise without the express written consent of BRIFEN USA, Inc.

Revisions			SOCKETED POST DETAILS (TL-3, 4 - ROPE SHOWN)		
No.	Date	By	Date	Drawn By	Scale
1.	6.21.05	MW	5.17.05	Manita Workman	None
2.	6.28.05	MW			
3.	7.21.05	MW	VERSION 8.6		
4.	8.01.05	MW			
5.	8.04.05	MW	Dwg. No.	WRSF-05-205a	Sheet No. 5 of 11